

# STATE OF MAINE DEPARTMENT OF TRANSPORTATION



## LISBON ANDROSCOGGIN COUNTY FRAZIER BRIDGE OVER DEARING BROOK ROUTE 125 (MAIN STREET) FEDERAL AID PROJECT NO. 2311800 PROJECT LENGTH 0.095 mi. BRIDGE NO. 3954

### SPECIFICATIONS

Design: Load and Resistance Factor Design per AASHTO LRFD Bridge Design Specifications, Ninth Edition 2020.

### DESIGN LOADING

Live Load ..... HL - 93 Modified for Strength I

### TRAFFIC DATA

Current (2020) AADT ..... 2210  
 Future (2032) AADT ..... 2340  
 DHV - % of AADT ..... 14  
 Design Hour Volume ..... 328  
 Heavy Trucks (% of AADT) ..... 6  
 Heavy Trucks (% of DHV) ..... 2  
 Directional Distribution (% of DHV) ..... 52  
 18 kip Equivalent P 2.0 ..... 58  
 18 kip Equivalent P 2.5 ..... 56  
 Design Speed (mph) ..... 45

### HYDROLOGIC DATA

Drainage Area ..... 1.1 sq mi  
 Design Discharge (Q50) ..... 188.9 cfs  
 Check Discharge (Q100) ..... 220.9 cfs  
 Headwater Elevation (Q1.1) ..... 116.99 ft  
 Headwater Elevation (Q25) ..... 118.88 ft  
 Headwater Elevation (Q50) ..... 119.19 ft  
 Headwater Elevation (Q100) ..... 119.52 ft  
 Discharge Velocity (Q1.1) ..... 1.84 fps  
 Discharge Velocity (Q50) ..... 5.99 fps  
 Discharge Velocity (Q100) ..... 6.57fps

### MATERIALS

Concrete:  
 Precast ..... Class "P"  
 All Other ..... Class "A"  
 Reinforcing Steel ..... ASTM A 615/A 615M, Grade 60

### BASIC DESIGN STRESSES

Concrete ..... f'c = 4000 psi  
 Precast Concrete ..... f'c = 5000 psi  
 Reinforcing Steel ..... fy = 60,000 psi

### LIST OF DRAWINGS

Title Sheet	1
Estimated Quantities & General Construction Notes	2
Plan	3
Profile	4
Boring Location Plan	5
Interpretive Subsurface Profile	6
Boring Logs	7
Cross Sections and Typical Sections	8-15
Box Culvert Details 1 of 2	16
Box Culvert Details 2 of 2	17
Detour Map	18
Right of Way Map	19

### UTILITIES

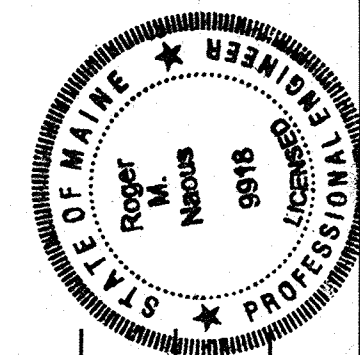
Consolidated Communications  
 Central Maine Power  
 Charter Communications  
 Lisbon Water District

### MAINTENANCE OF TRAFFIC

Bridge will be closed to traffic during construction with the traffic detoured.

<u>PROJECT LOCATION</u>	In Lisbon, Frazier Bridge (#3954) over Dearing Brook. Located 0.16 of a mile North of Summer Street. Lat./Long. 44°01'13.86" N 70°02'35.83" W
<u>PROGRAM AREA</u>	Highway Bridges - Traditional
<u>OUTLINE OF WORK</u>	Bridge Culvert Replacement

STATE OF MAINE DEPARTMENT OF TRANSPORTATION	APPROVED	DATE
	<i>[Signature]</i>	12-13-21
COMMISSIONER:		12-16-2021
CHIEF ENGINEER:		



SIGNATURE	DATE
<i>[Signature]</i>	NOV 15 2021
P.E. NUMBER	
9918	

PROJECT INFORMATION	
PROGRAM	BRIDGE PROGRAM
PROJECT MANAGER	DEVAN EATON
DESIGNER	ROGER NADUS
CONSULTANT	
PROJECT RESIDENT	
CONTRACTOR	
PROJECT COMPLETION DATE	

LISBON FRAZIER BRIDGE	TITLE SHEET
--------------------------	-------------

SHEET NUMBER	1
OF 19	

Date: 11/15/2021

Username: Devon.C.Eaton

Division: BRIDGE

Filename: \\00\BRIDGE\MST\A\001\_Title.dgn

WIN 023118.00

02311800

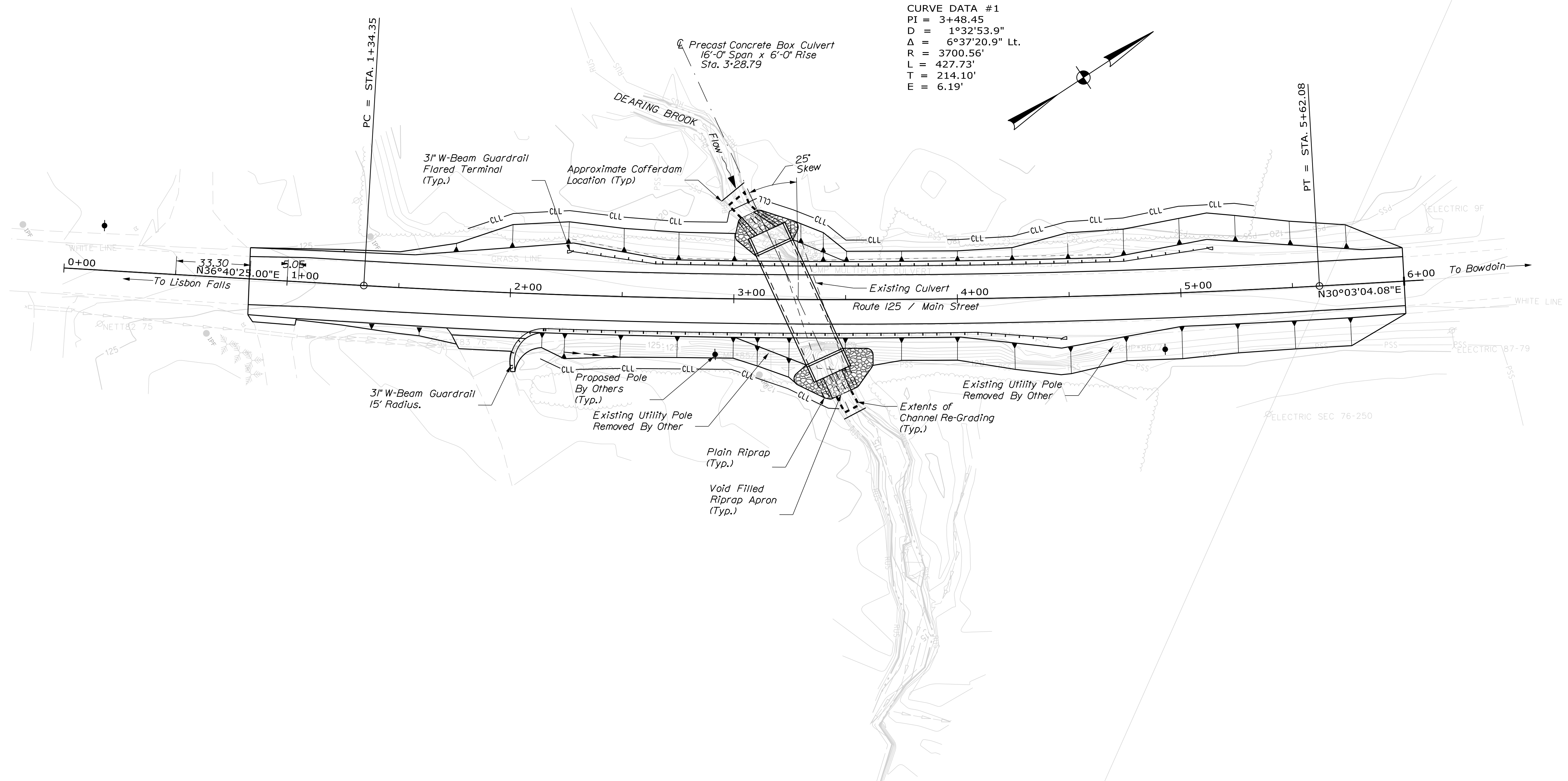
ESTIMATED QUANTITIES			
ITEM NO.	DESCRIPTION	QUANTITY	UNIT
202.202	REMOVING PAVEMENT SURFACE	715	SY
203.20	COMMON EXCAVATION	930	CY
203.2318	DISPOSAL OF SPECIAL WASTE	50	T
203.25	GRANULAR BORROW	52	CY
203.33	SPECIAL FILL	55	CY
203.55	CULVERT BEDDING STONE	110	CY
206.07	STRUCTURAL ROCK EXCAVATION - DRAINAGE AND MINOR STRUCTURES	11	CY
304.10	AGGREGATE SUBBASE COURSE - GRAVEL	850	CY
403.208	HOT MIX ASPHALT - 12.5 MM SURFACE	167	T
403.209	HOT MIX ASPHALT - 9.5MM (SIDEWALKS, DRIVES & INCIDENTALS)	2	T
403.213	HOT MIX ASPHALT - 12.5 MM (BASE AND INTERMEDIATE COURSE)	187	T
409.15	BITUMINOUS TACK COAT - APPLIED	90	G
508.13	SHEET WATERPROOFING MEMBRANE (107 SY)	1	LS
511.07	COFFERDAM: UPSTREAM	1	LS
511.07	COFFERDAM: DOWNSTREAM	1	LS
515.21	PROTECTIVE COATING FOR CONCRETE SURFACES (30 SY)	1	LS
526.301	TEMPORARY CONCRETE BARRIER TYPE 1 (60 LF)	1	LS
534.71	PRECAST CONCRETE BOX CULVERT (148 CY)	1	LS
606.1301	3" W-BEAM GUARDRAIL, MID-WAY SPLICE-SINGLE FACED	405	LF
606.1303	3" W-BEAM GUARDRAIL, MID-WAY SPLICE-15' RADIUS & LESS	25	LF
606.1305	3" W-BEAM GUARDRAIL, MID-WAY SPLICE FLARED TERMINAL	3	EA
606.265	TERMINAL END SINGLE RAIL	1	EA
606.353	REFLECTORIZED FLEXIBLE GUARDRAIL MARKER	8	EA
610.08	PLAIN RIPRAP	60	CY
610.210	STREAM CHANNEL ROCK	60	CY
613.319	EROSION CONTROL BLANKET	123	SY
615.07	LOAM	53	CY
618.14	SEEDING METHOD NUMBER 2	9	UN
619.12	MULCH	9	UN
619.14	EROSION CONTROL MIX	105	CY
620.54	STABILIZATION/REINFORCEMENT GEOTEXTILE	360	SY
620.58	EROSION CONTROL GEOTEXTILE	150	SY
620.65	REINFORCEMENT GEOGRID	170	SY
627.733	4" WHITE OR YELLOW PAINTED PAVE MARKING LINE	1575	LF
629.05	HAND LABOR, STRAIGHT TIME	20	HR
631.12	ALL PURPOSE EXCAVATOR (INCLUDING OPERATOR)	10	HR
631.172	TRUCK - LARGE (INCLUDING OPERATOR)	10	HR
639.19	FIELD OFFICE TYPE B	1	EA
652.312	TYPE III BARRICADE	4	EA
652.33	DRUM	10	EA
652.34	CONE	20	EA
652.35	CONSTRUCTION SIGNS	1130	SF
652.361	MAINTENANCE OF TRAFFIC CONTROL DEVICES (60 CD)	1	LS
652.38	FLAGGER	200	HR
652.41	PORTABLE CHANGEABLE MESSAGE SIGN	2	EA
656.75	TEMPORARY SOIL EROSION & WATER POLLUTION CONTROL	1	LS
659.10	MOBILIZATION	1	LS

### GENERAL CONSTRUCTION NOTES

- During construction, the road will be closed to traffic for a time period specified in the Special Provisions.
- For easements, construction limits and right of way lines, refer to Right of Way Map.
- The clearing limits as shown on the plans are approximate. The exact limits will be established in the field by the Resident. Payment for clearing will be considered incidental to Contract items.
- All utility facilities shall be adjusted by the respective utilities unless otherwise noted.
- Do not excavate for Aggregate Subbase Course where existing material is suitable as determined by the Resident.
- In areas where the Resident directs the Contractor not to excavate to the subgrade line shown on the plans, payment for removing existing pavement, grubbing, shaping, ditching, and compacting the existing subbase and layers of new subbase 6 inches or less thick will be made under appropriate equipment rental items.
- All embankment material, except as otherwise shown, placed below EL. 119.19' shall be Granular Borrow meeting the requirements of Subsection 703.19, Material for Underwater Back fill.
- Place loam 2 inches deep on all new or reconstructed sideslopes or as directed by the Resident.
- Erosion Control Mix may be substituted in those areas normally receiving loam and seed as directed by the Resident. Placement shall be in accordance with Standard Specifications Section 619, Mulch. Payment will be made under Item No. 619.14, Erosion Control Mix.
- Place riprap on sideslopes up to EL. 120.00.
- Place a 24-in. wide strip of Temporary Erosion Control Blanket on the sideslopes along the top of the riprap and behind the wingwalls.
- Guardrail posts as shown in the Standard Details shall be modified from the indicated length of 6 feet to a length of 8 feet with an embedment of 5.5 feet. Payment will be considered incidental to the guardrail pay items.
- An NCHRP350 compliant guardrail end treatment shall be installed concurrently with the placement of each section of beam guardrail.
- Extended-use Erosion Control Blanket, seeded gutters, riprap downspouts, and other gutters lined with Stone Ditch Protection shall be constructed after paving and shoulder work is completed, where it is apparent that runoff will cause continual erosion. Payment will be made under the appropriate Contract items.
- Protective Coating for concrete surfaces shall be applied to the following areas:  
On all concrete headwalls and concrete wall surfaces that are exposed and to limit lines, one foot beyond intersections of concrete surfaces with the ground.
- Project information referred to below may be accessed at the following MaineDOT web address: <http://www.maine.gov/mdot/contractors/>.
- The existing bridge plans may be accessed at the MaineDOT web address. The plans are reproductions of the original drawings as prepared for the construction of the bridge. It is very unlikely that the plans will show any construction field changes or any alterations which may have been made to the bridge during its life span.

- The hydrologic report of the bridge site may be accessed at the MaineDOT web address. The hydrologic report is based on MaineDOT's interpretation of the information obtained for the subject site. No assurance is given that the information or the conclusions of the report will be representative of actual conditions at the time of construction.
- The project geotechnical report titled: Geotechnical Design Report for the replacement of Frazier Bridge, State Route 125 over Dearing Brook Lisbon Maine. Soils Report No. 2020-54, dated December 30, 2020.
- Geotechnical information furnished or referred to in this plan set is for the use of the Bidder's and the Contractor. No assurance is given that the information or interpretations will be representative of actual subsurface conditions at the construction site. MaineDOT will not be responsible for the Bidder's or Contractor's interpretations of, or conclusions drawn from, the geotechnical information. The boring logs contained in the plan set present factual and interpretive subsurface information collected at discrete locations. Data provided may not be representative of the subsurface conditions between the boring locations.
- The Contractor shall maintain the excavation so that the box culvert and crushed stone mat are constructed in-the-dry. Groundwater should be controlled by pumping from sumps or other dewatering systems selected by the contractor. Cofferdams may be required to divert flow away from the excavation during construction. Where excavation sides are cut back, excavation slope geometries be in accordance with OSHA regulations, or flatter.
- The native soil subgrade shall be excavated using a smooth-edged bucket and to avoid disturbance of the subgrade. The contractor shall not operate heavy equipment over the excavated subgrade to minimize subgrade disturbance. Limit vibration-induced disturbance to the saturated, sandy subgrade. If the subgrade is disturbed or weakened, the Contractor shall over excavate the disturbed material and replace with compacted Granular Borrow to the subgrade level at the contractor's expense. All organics, wood and timber encountered at the bearing elevation shall be removed and replaced with compacted Granular Borrow Material for Underwater Backfill.
- The Stabilization/Reinforcement Geotextile shall be hand-deployed onto the prepared soil subgrade prior to installing the crushed stone mat. Adjoining sections of the geotextile shall be overlapped by a minimum of 2 feet. The crushed stone shall be placed in maximum 8-inch thick lifts and each lift compacted with at least 4 passes of a walk-behind plate compactor.
- Quantities included for pay items measured and paid for by Lump Sum are estimated quantities and are provided by MaineDOT for informational purposes only. Lump Sum pay items will be paid for at the Contract Bid amount, with no addition or reduction in payment to the Contractor if the actual final quantities are different from the MaineDOT provided estimated quantities, except as follows:
  - If a Lump Sum pay item is eliminated, the requirements of Standard Specifications Section 109.2, Elimination of Items, will take precedence.
  - If other Contract Documents specifically allow a change in payment for a Lump Sum pay item, those requirements will be followed.
  - If a design change results in changes to estimated quantities for Lump Sum pay items, price adjustments will be made in accordance with Standard Specifications Section 109.7, Equitable Adjustments to Compensation.
- Culvert ends shall be cleaned out as directed by the Resident. Cost shall be incidentals to related contract items.
- Item 206.07 Structural Rock Excavation - Drainage & Minor Structures is intended for the removal of the existing concrete arch footings more than the 2 CY defined in Standard Specification Section 206.01.

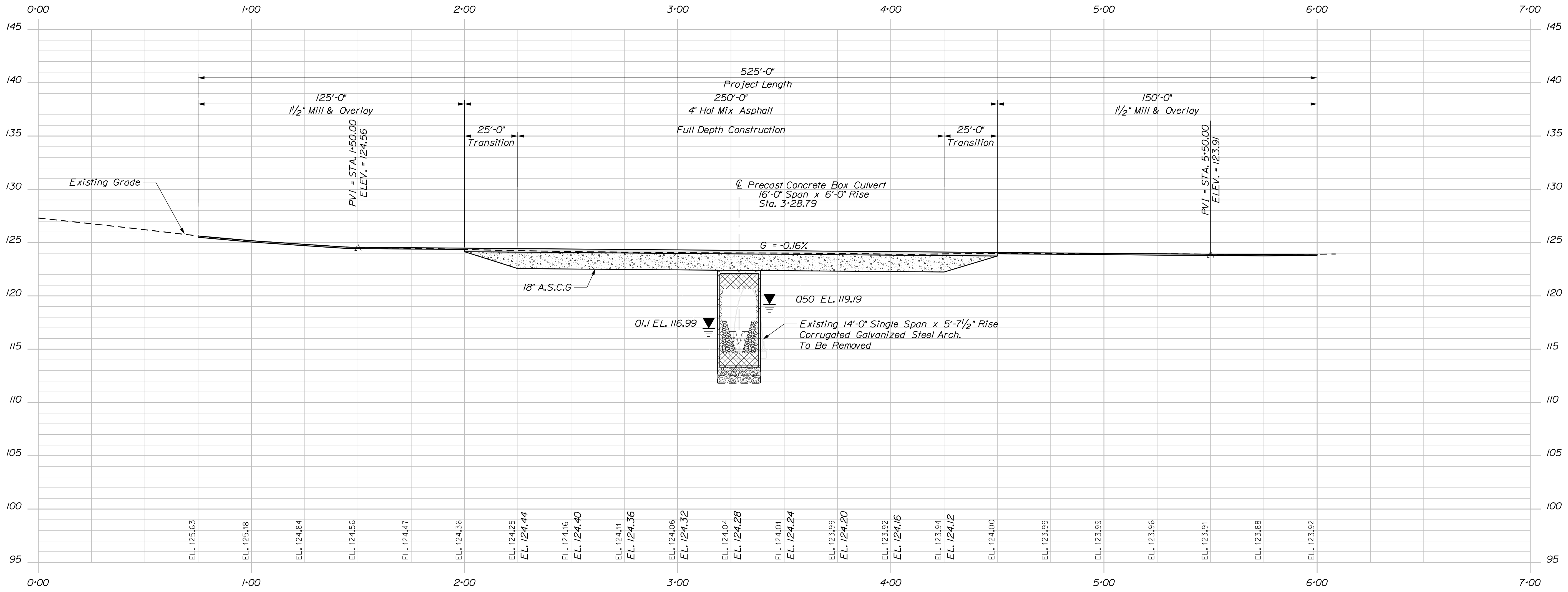
STATE OF MAINE DEPARTMENT OF TRANSPORTATION	2311800	WIN	023118.00	BRIDGE NO. 3954	BRIDGE PLANS
FRAZIER BRIDGE DEARING BROOK ANDROSCOGGIN COUNTY LISBON ESTIMATED QUANTITIES GENERAL CONSTRUCTION NOTES					
SHEET NUMBER					
2					
OF 19					



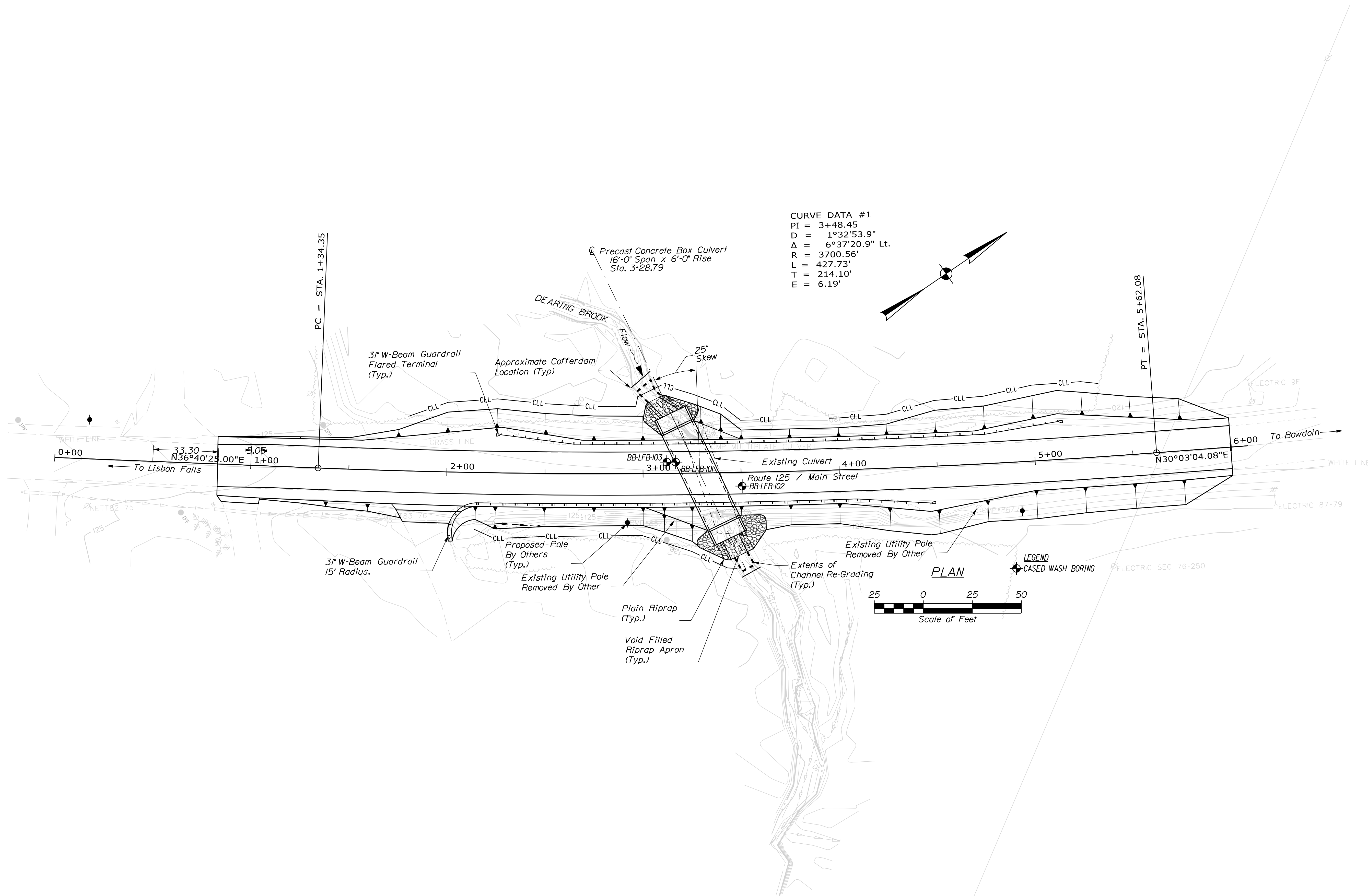
CURVE DATA #1

PI	=	3+48.45
D	=	1°32'53.9"
Δ	=	6°37'20.9" Lt.
R	=	3700.56'
L	=	427.73'
T	=	214.10'
E	=	6.19'

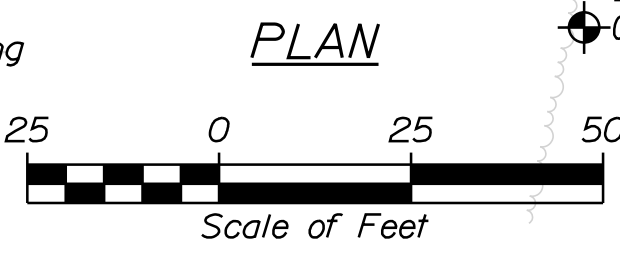
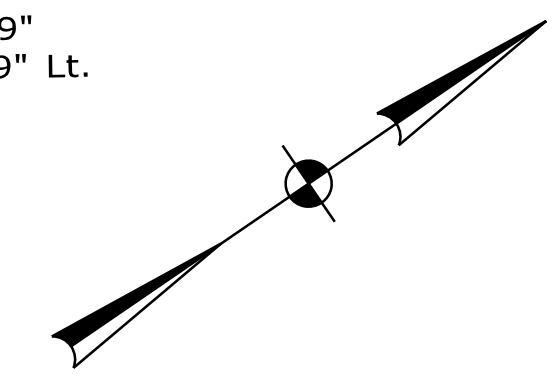
LISBON FRAZIER BRIDGE DEARING BROOK ANDROSCOGGIN COUNTY PLAN	STATE OF MAINE DEPARTMENT OF TRANSPORTATION 2311800
	BRIDGE NO. 3954 WIN 023118.00 BRIDGE PLANS
SHEET NUMBER <span style="font-size: 2em; font-weight: bold;">3</span> OF 19	DATE SIGNATURE P.E. NUMBER DATE
DESIGN-DETAILED CHECKED-REVIEWED DESIGN-DETAILED REVISIONS 1 REVISIONS 2 REVISIONS 3 REVISIONS 4 FIELD CHANGES	BY M. NAULIS M. POLIN DATE 3/2020 10/2020



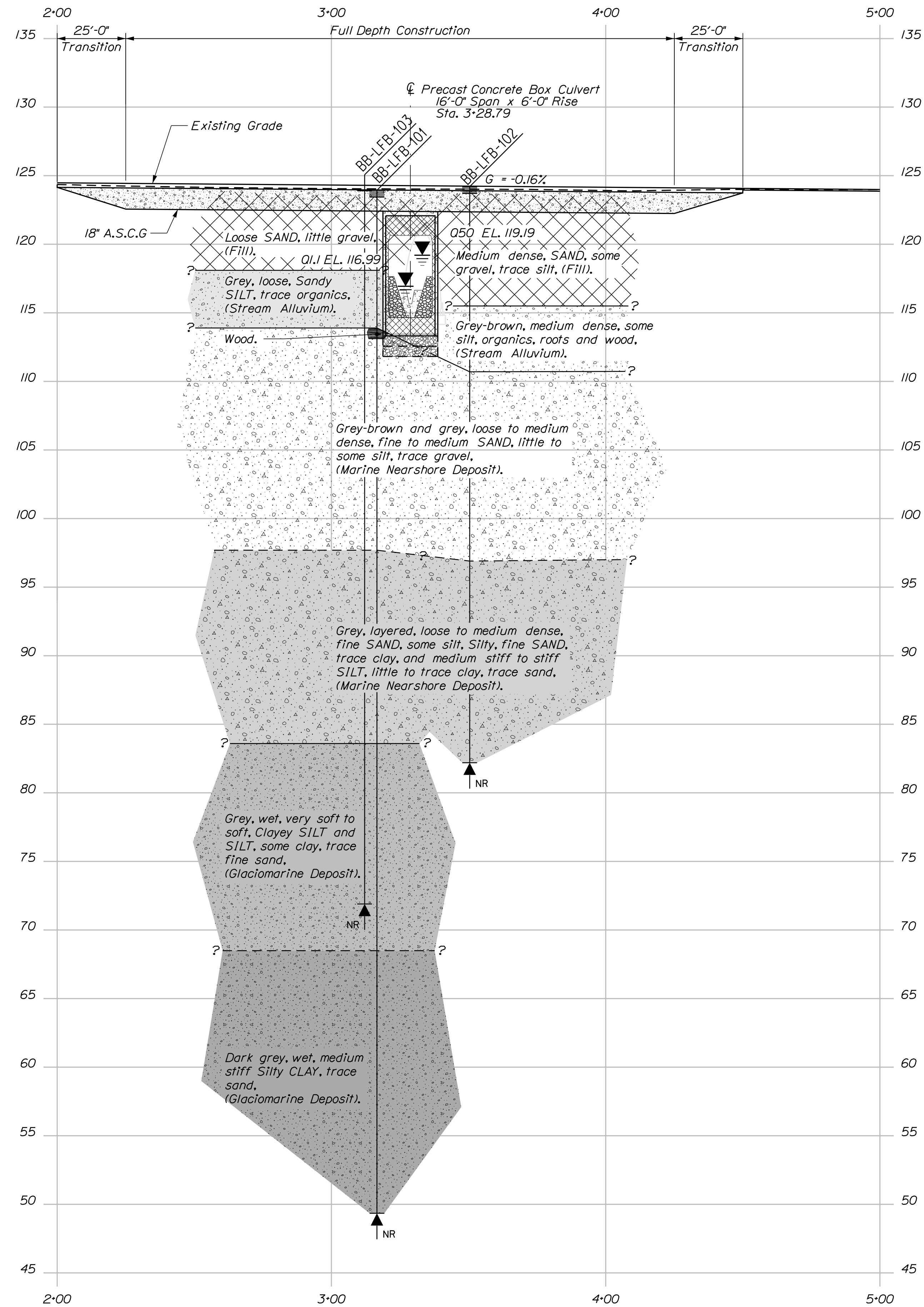
<b>STATE OF MAINE</b>		<b>DEPARTMENT OF TRANSPORTATION</b>	
<b>LISBON</b>		<b>ANDROSCOGGIN COUNTY</b>	
<b>FRAZIER BRIDGE</b>		<b>DEARING BROOK</b>	
<b>PROFILE</b>		<b>BRIDGE PLANS</b>	
<b>SHEET NUMBER</b>		<b>2311800</b>	
<b>4</b>		<b>WIN</b>	
<b>OF 19</b>		<b>023118.00</b>	
<b>BRIDGE NO. 3954</b>		<b>DATE</b>	
<b>FIELD CHANGES</b>		<b>P.E. NUMBER</b>	
<b>REVISIONS 1</b>		<b>SIGNATURE</b>	
<b>REVISIONS 2</b>		<b>DATE</b>	
<b>REVISIONS 3</b>		<b>BY</b>	
<b>REVISIONS 4</b>		<b>DATE</b>	
<b>PROJ. MANAGER</b>		<b>BY</b>	
<b>DESIGN-DETAILED</b>		<b>DATE</b>	
<b>CHECKED-REVIEWED</b>		<b>BY</b>	
<b>DESIGN-DETAILED</b>		<b>DATE</b>	
<b>DESIGN-DETAILED</b>		<b>BY</b>	
<b>DESIGN-DETAILED</b>		<b>DATE</b>	
<b>DESIGN-DETAILED</b>		<b>BY</b>	
<b>DESIGN-DETAILED</b>		<b>DATE</b>	
<b>DESIGN-DETAILED</b>		<b>BY</b>	
<b>DESIGN-DETAILED</b>		<b>DATE</b>	
<b>DESIGN-DETAILED</b>		<b>BY</b>	
<b>DESIGN-DETAILED</b>		<b>DATE</b>	
<b>DESIGN-DETAILED</b>		<b>BY</b>	
<b>DESIGN-DETAILED</b>		<b>DATE</b>	
<b>DESIGN-DETAILED</b>		<b>BY</b>	
<b>DESIGN-DETAILED</b>		<b>DATE</b>	
<b>DESIGN-DETAILED</b>		<b>BY</b>	
<b>DESIGN-DETAILED</b>		<b>DATE</b>	
<b>DESIGN-DETAILED</b>		<b>BY</b>	
<b>DESIGN-DETAILED</b>		<b>DATE</b>	
<b>DESIGN-DETAILED</b>		<b>BY</b>	
<b>DESIGN-DETAILED</b>		<b>DATE</b>	
<b>DESIGN-DETAILED</b>		<b>BY</b>	
<b>DESIGN-DETAILED</b>		<b>DATE</b>	
<b>DESIGN-DETAILED</b>		<b>BY</b>	
<b>DESIGN-DETAILED</b>		<b>DATE</b>	
<b>DESIGN-DETAILED</b>		<b>BY</b>	
<b>DESIGN-DETAILED</b>		<b>DATE</b>	
<b>DESIGN-DETAILED</b>		<b>BY</b>	
<b>DESIGN-DETAILED</b>		<b>DATE</b>	
<b>DESIGN-DETAILED</b>		<b>BY</b>	
<b>DESIGN-DETAILED</b>		<b>DATE</b>	
<b>DESIGN-DETAILED</b>		<b>BY</b>	
<b>DESIGN-DETAILED</b>		<b>DATE</b>	
<b>DESIGN-DETAILED</b>		<b>BY</b>	
<b>DESIGN-DETAILED</b>		<b>DATE</b>	
<b>DESIGN-DETAILED</b>		<b>BY</b>	
<b>DESIGN-DETAILED</b>		<b>DATE</b>	
<b>DESIGN-DETAILED</b>		<b>BY</b>	
<b>DESIGN-DETAILED</b>		<b>DATE</b>	
<b>DESIGN-DETAILED</b>		<b>BY</b>	
<b>DESIGN-DETAILED</b>		<b>DATE</b>	
<b>DESIGN-DETAILED</b>		<b>BY</b>	
<b>DESIGN-DETAILED</b>		<b>DATE</b>	
<b>DESIGN-DETAILED</b>		<b>BY</b>	
<b>DESIGN-DETAILED</b>		<b>DATE</b>	
<b>DESIGN-DETAILED</b>		<b>BY</b>	
<b>DESIGN-DETAILED</b>		<b>DATE</b>	
<b>DESIGN-DETAILED</b>		<b>BY</b>	
<b>DESIGN-DETAILED</b>		<b>DATE</b>	
<b>DESIGN-DETAILED</b>		<b>BY</b>	
<b>DESIGN-DETAILED</b>		<b>DATE</b>	
<b>DESIGN-DETAILED</b>		<b>BY</b>	
<b>DESIGN-DETAILED</b>		<b>DATE</b>	
<b>DESIGN-DETAILED</b>		<b>BY</b>	
<b>DESIGN-DETAILED</b>		<b>DATE</b>	
<b>DESIGN-DETAILED</b>		<b>BY</b>	
<b>DESIGN-DETAILED</b>		<b>DATE</b>	
<b>DESIGN-DETAILED</b>		<b>BY</b>	
<b>DESIGN-DETAILED</b>		<b>DATE</b>	
<b>DESIGN-DETAILED</b>		<b>BY</b>	
<b>DESIGN-DETAILED</b>		<b>DATE</b>	
<b>DESIGN-DETAILED</b>		<b>BY</b>	
<b>DESIGN-DETAILED</b>		<b>DATE</b>	
<b>DESIGN-DETAILED</b>		<b>BY</b>	
<b>DESIGN-DETAILED</b>		<b>DATE</b>	
<b>DESIGN-DETAILED</b>		<b>BY</b>	
<b>DESIGN-DETAILED</b>		<b>DATE</b>	
<b>DESIGN-DETAILED</b>		<b>BY</b>	
<b>DESIGN-DETAILED</b>		<b>DATE</b>	
<b>DESIGN-DETAILED</b>		<b>BY</b>	
<b>DESIGN-DETAILED</b>		<b>DATE</b>	
<b>DESIGN-DETAILED</b>		<b>BY</b>	
<b>DESIGN-DETAILED</b>		<b>DATE</b>	
<b>DESIGN-DETAILED</b>		<b>BY</b>	
<b>DESIGN-DETAILED</b>		<b>DATE</b>	
<b>DESIGN-DETAILED</b>		<b>BY</b>	
<b>DESIGN-DETAILED</b>		<b>DATE</b>	
<b>DESIGN-DETAILED</b>		<b>BY</b>	
<b>DESIGN-DETAILED</b>		<b>DATE</b>	
<b>DESIGN-DETAILED</b>		<b>BY</b>	
<b>DESIGN-DETAILED</b>		<b>DATE</b>	
<b>DESIGN-DETAILED</b>		<b>BY</b>	
<b>DESIGN-DETAILED</b>		<b>DATE</b>	
<b>DESIGN-DETAILED</b>		<b>BY</b>	
<b>DESIGN-DETAILED</b>		<b>DATE</b>	
<b>DESIGN-DETAILED</b>		<b>BY</b>	
<b>DESIGN-DETAILED</b>		<b>DATE</b>	
<b>DESIGN-DETAILED</b>		<b>BY</b>	
<b>DESIGN-DETAILED</b>		<b>DATE</b>	
<b>DESIGN-DETAILED</b>		<b>BY</b>	
<b>DESIGN-DETAILED</b>		<b>DATE</b>	
<b>DESIGN-DETAILED</b>		<b>BY</b>	
<b>DESIGN-DETAILED</b>		<b>DATE</b>	
<b>DESIGN-DETAILED</b>		<b>BY</b>	
<b>DESIGN-DETAILED</b>		<b>DATE</b>	
<b>DESIGN-DETAILED</b>		<b>BY</b>	
<b>DESIGN-DETAILED</b>		<b>DATE</b>	
<b>DESIGN-DETAILED</b>		<b>BY</b>	
<b>DESIGN-DETAILED</b>		<b>DATE</b>	
<b>DESIGN-DETAILED</b>		<b>BY</b>	
<b>DESIGN-DETAILED</b>		<b>DATE</b>	
<b>DESIGN-DETAILED</b>		<b>BY</b>	
<b>DESIGN-DETAILED</b>		<b>DATE</b>	
<b>DESIGN-DETAILED</b>		<b>BY</b>	
<b>DESIGN-DETAILED</b>		<b>DATE</b>	
<b>DESIGN-DETAILED</b>		<b>BY</b>	
<b>DESIGN-DETAILED</b>		<b>DATE</b>	
<b>DESIGN-DETAILED</b>		<b>BY</b>	
<b>DESIGN-DETAILED</b>		<b>DATE</b>	
<b>DESIGN-DETAILED</b>		<b>BY</b>	
<b>DESIGN-DETAILED</b>		<b>DATE</b>	
<b>DESIGN-DETAILED</b>		<b>BY</b>	
<b>DESIGN-DETAILED</b>		<b>DATE</b>	
<b>DESIGN-DETAILED</b>		<b>BY</b>	
<b>DESIGN-DETAILED</b>		<b>DATE</b>	
<b>DESIGN-DETAILED</b>		<b>BY</b>	
<b>DESIGN-DETAILED</b>		<b>DATE</b>	
<b>DESIGN-DETAILED</b>		<b>BY</b>	
<b>DESIGN-DETAILED</b>		<b>DATE</b>	
<b>DESIGN-DETAILED</b>		<b>BY</b>	
<b>DESIGN-DETAILED</b>		<b>DATE</b>	
<b>DESIGN-DETAILED</b>		<b>BY</b>	
<b>DESIGN-DETAILED</b>		<b>DATE</b>	
<b>DESIGN-DETAILED</b>		<b>BY</b>	
<b>DESIGN-DETAILED</b>		<b>DATE</b>	
<b>DESIGN-DETAILED</b>		<b>BY</b>	
<b>DESIGN-DETAILED</b>		<b>DATE</b>	
<b>DESIGN-DETAILED</b>		<b>BY</b>	
<b>DESIGN-DETAILED</b>		<b>DATE</b>	
<b>DESIGN-DETAILED</b>		<b>BY</b>	
<b>DESIGN-DETAILED</b>		<b>DATE</b>	
<b>DESIGN-DETAILED</b>		<b>BY</b>	
<b>DESIGN-DETAILED</b>		<b>DATE</b>	
<b>DESIGN-DETAILED</b>		<b>BY</b>	
<b>DESIGN-DETAILED</b>		<b>DATE</b>	
<b>DESIGN-DETAILED</b>		<b>BY</b>	
<b>DESIGN-DETAILED</b>		<b>DATE</b>	
<b>DESIGN-DETAILED</b>		<b>BY</b>	
<b>DESIGN-DETAILED</b>		<b>DATE</b>	
<b>DESIGN-DETAILED</b>		<b>BY</b>	
<b>DESIGN-DETAILED</b>		<b>DATE</b>	
<b>DESIGN-DETAILED</b>		<b>BY</b>	
<b>DESIGN-DETAILED</b>		<b>DATE</b>	
<b>DESIGN-DETAILED</b>		<b>BY</b>	
<b>DESIGN-DETAILED</b>		<b>DATE</b>	
<b>DESIGN-DETAILED</b>		<b>BY</b>	
<b>DESIGN-DETAILED</b>		<b>DATE</b>	
<b>DESIGN-DETAILED</b>		<b>BY</b>	
<b>DESIGN-DETAILED</b>		<b>DATE</b>	
<b>DESIGN-DETAILED</b>		<b>BY</b>	
<b>DESIGN-DETAILED</b>		<b>DATE</b>	
<b>DESIGN-DETAILED</b>		<b>BY</b>	
<b>DESIGN-DETAILED</b>		<b>DATE</b>	
<b>DESIGN-DETAILED</b>		<b>BY</b>	
<b>DESIGN-DETAILED</b>		<b>DATE</b>	
<b>DESIGN-DETAILED</b>		<b>BY</b>	
<b>DESIGN-DETAILED</b>		<b>DATE</b>	
<b>DESIGN-DETAILED</b>		<b>BY</b>	
<b>DESIGN-DETAILED</b>		<b>DATE</b>	
<b>DESIGN-DETAILED</b>		<b>BY</b>	
<b>DESIGN-DETAILED</b>		<b>DATE</b>	
<b>DESIGN-DETAILED</b>		<b>BY</b>	
<b>DESIGN-DETAILED</b>		<b>DATE</b>	
<b>DESIGN-DETAILED</b>		<b>BY</b>	
<b>DESIGN-DETAILED</b>		<b>DATE</b>	
<b>DESIGN-DETAILED</b>		<b>BY</b>	
<b>DESIGN-DETAILED</b>		<b>DATE</b>	
<b>DESIGN-DETAILED</b>		<b>BY</b>	
<b>DESIGN-DETAILED</b>		<b>DATE</b>	
<b>DESIGN-DETAILED</b>		<b>BY</b>	
<b>DESIGN-DETAILED</b>		<b>DATE</b>	
<b>DESIGN-DETAILED</b>		<b>BY</b>	
<b>DESIGN-DETAILED</b>		<b>DATE</b>	
<b>DESIGN-DETAILED</b>		<b>BY</b>	
<b>DESIGN-DETAILED</b>		<b>DATE</b>	
<b>DESIGN-DETAILED</b>		<b>BY</b>	
<b>DESIGN-DETAILED</b>		<b>DATE</b>	
<b>DESIGN-DETAILED</b>		<b>BY</b>	
<b>DESIGN-DETAILED</b>		<b>DATE</b>	
<b>DESIGN-DETAILED</b>		<b>BY</b>	
<b>DESIGN-DETAILED</b>		<b>DATE</b>	
<b>DESIGN-DETAILED</b>		<b>BY</b>	
<b>DESIGN-DETAILED</b>		<b>DATE</b>	
<b>DESIGN-DETAILED</b>		<b>BY</b>	
<b>DESIGN-DETAILED</b>		<b>DATE</b>	
<b>DESIGN-DETAILED</b>		<b>BY</b>	
<b>DESIGN-DETAILED</b>		<b>DATE</b>	
<b>DESIGN-DETAILED</b>		<b>BY</b>	
<b>DESIGN-DETAILED</b>		<b>DATE</b>	
<b>DESIGN-DETAILED</b>		<b>BY</b>	
<b>DESIGN-DETAILED</b>		<b>DATE</b>	
<b>DESIGN-DETAILED</b>		<b>BY</b>	
<b>DESIGN-DETAILED</b>		<b>DATE</b>	
<b>DESIGN-DETAILED</b>		<b>BY</b>	
<b>DESIGN-DETAILED</b>		<b>DATE</b>	
<b>DESIGN-DETAILED</b>		<b>BY</b>	
<b>DESIGN-DETAILED</b>		<b>DATE</b>	
<b>DESIGN-DETAILED</b>		<b>BY</b>	
<b>DESIGN-DETAILED</b>		<b>DATE</b>	
<b>DESIGN-DETAILED</b>		<b>BY</b>	



**CURVE DATA #1**  
 PI = 3+48.45  
 D = 1°32'53.9"  
 Δ = 6°37'20.9" Lt.  
 R = 3700.56'  
 L = 427.73'  
 T = 214.10'  
 E = 6.19'



STATE OF MAINE		DEPARTMENT OF TRANSPORTATION	
LISBON		2311800	
FRAZIER BRIDGE		WIN	
DEARING BROOK		23118.00	
ANDROSCOGGIN COUNTY		BRIDGE NO. 3954	
BORING LOCATION PLAN		BRIDGE PLANS	
PROJ. MANAGER	DEVAN EATON	BY	DATE
DESIGN-DETAILED	R. NAULIS	MCRTICHLAW	11/2021
CHECKED-REVIEWED	J. MANAHAN	T. WHITE	NOV. 2021
DESIGN-DETAILED			
REVISIONS 1			
REVISIONS 2			
REVISIONS 3			
REVISIONS 4			
FIELD CHANGES			
SHEET NUMBER		SIGNATURE	
5		P.E. NUMBER	
OF 19		DATE	

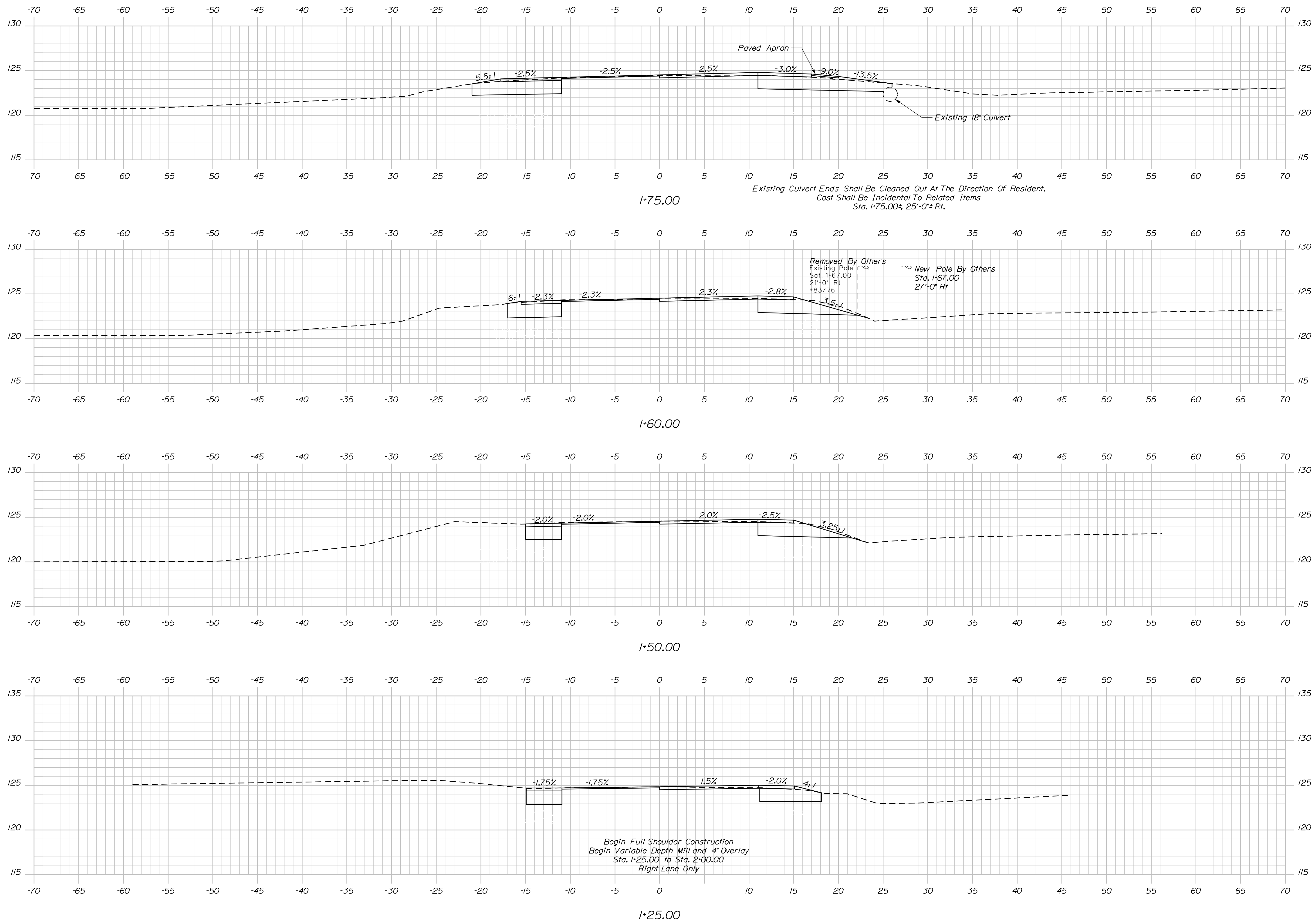


Note: This generalized interpretive soil profile is intended to convey trends in subsurface conditions. The boundaries between strata are approximate and idealized, and have been developed by interpretations of widely spaced explorations and samples. Actual soil and bedrock transitions may vary and are probably more erratic. For more specific information refer to the exploration logs.

STATE OF MAINE		DEPARTMENT OF TRANSPORTATION		2311800		BRIDGE NO. 3954		WIN		23118.00		BRIDGE PLANS	
FRAZIER BRIDGE		DEARING BROOK		ANDROSCOGGIN COUNTY		LISBON		INTERPRETIVE SUBSURFACE PROFILE		SHEET NUMBER		6	
PROJ. MANAGER	DEVAN EATON	BY	MCRTICHLAW	DATE	11/2021	CHECKED	R. NAUUS	SIGNATURE		P.E. NUMBER		DATE	
DESIGN-DETAILED		DESIGN-REVIEWED	J. MANAHAN	DESIGN-DETAILED	NOV. 2021	DESIGN-REVIEWED	T. WHITE						
REVISIONS 1		REVISIONS 2		REVISIONS 3		REVISIONS 4							
FIELD CHANGES													

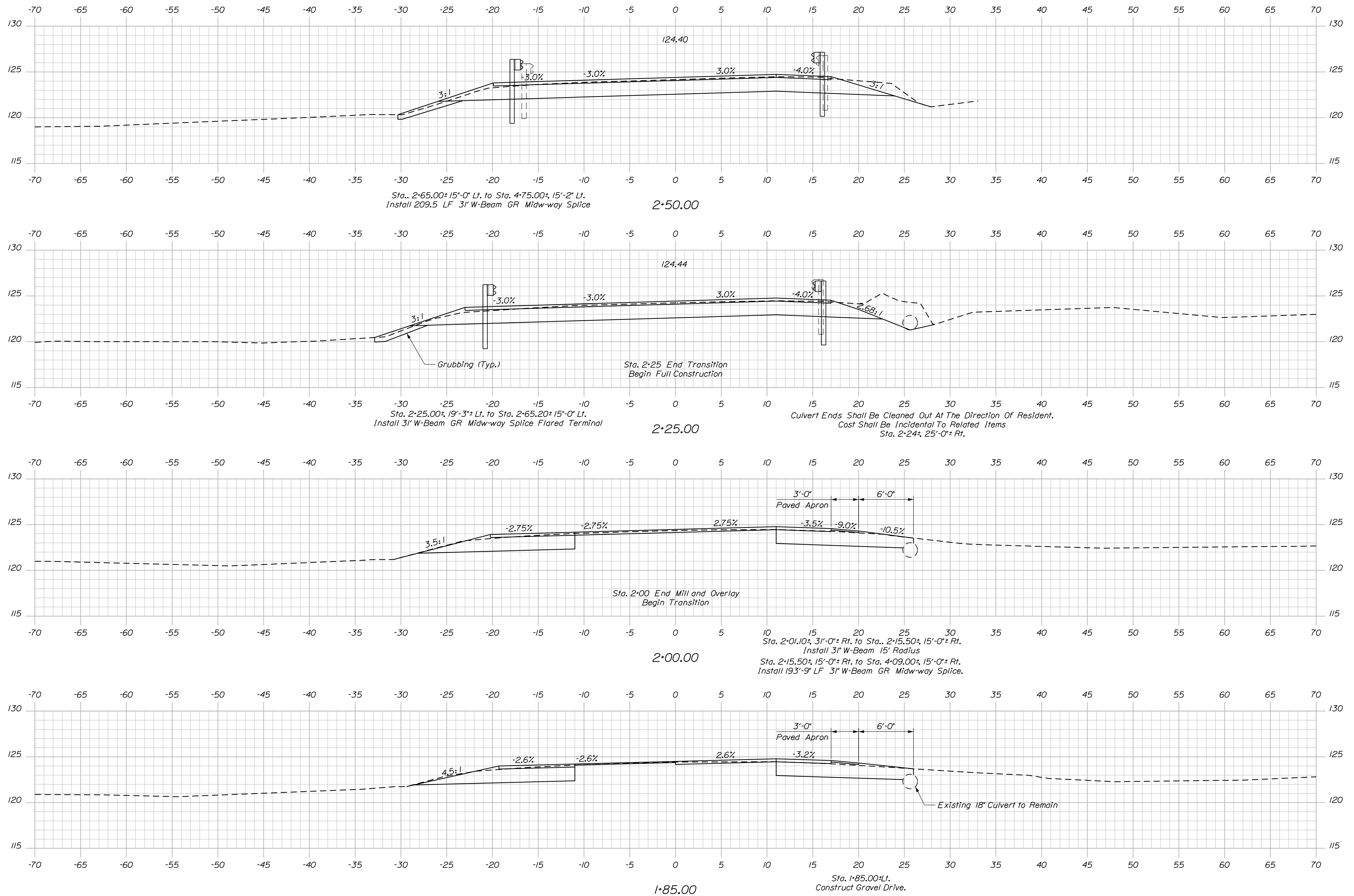






STATE OF MAINE DEPARTMENT OF TRANSPORTATION		2311800
LISBON		WIN
FRAZIER BRIDGE DEARING BROOK ANDROSCOGGIN COUNTY		BRIDGE NO. 3954
CROSS SECTIONS		BRIDGE PLANS
PROJ. MANAGER DEVAN EATON	BY M. CRITCHLOW	DATE 3/2020
CHECKED-REVIEWED D. EATON	M. POLLEN	10/2020
DESIGN-DETAILED		
DESIGNS-DETAILED		
REVISIONS 1		
REVISIONS 2		
REVISIONS 3		
REVISIONS 4		
FIELD CHANGES		
SHEET NUMBER		DATE
9		P.E. NUMBER
OF 19		SIGNATURE

Filename: ... \BRIDGE\MSTA\010\_XSECT\_1+85.dgn Division: BRIDGE Username: Matthew Critchlow Date: 11/23/2021



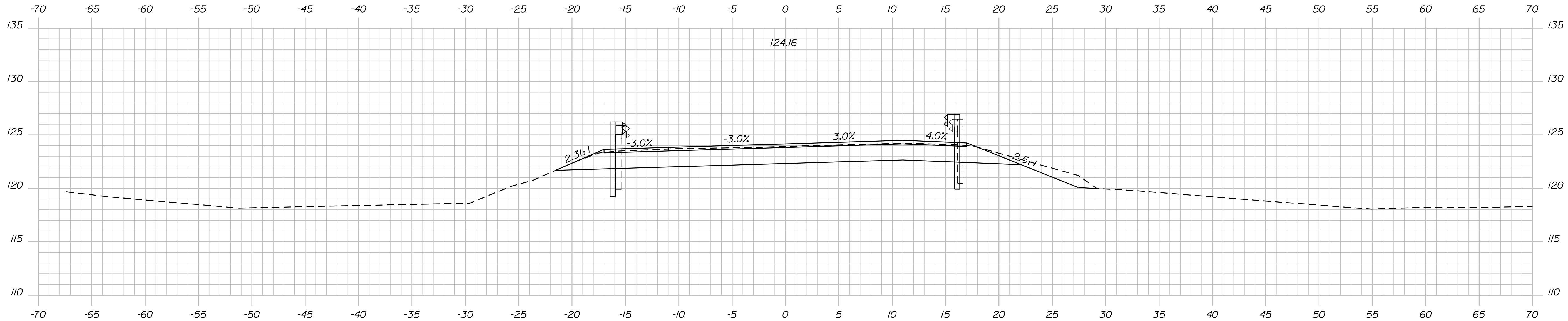
STATE OF MAINE		DEPARTMENT OF TRANSPORTATION		2311800		BRIDGE PLANS	
FRAZIER BRIDGE		DEARING BROOK		LISBON		CROSS SECTIONS	
ANDROSCOGGIN COUNTY		SHEET NUMBER		10		OF 19	
PROJ. MANAGER	DEVAN EATON	BY	DATE	SIGNATURE	P.E. NUMBER	DATE	BRIDGE NO. 3954
DESIGN-DETAILED	R. NAOLIS	M. CRITCHLOW	3/2020				WIN
CHECKED-REVIEWED	D. EATON	M. POLIN	10/2020				023118.00
DESIGN-DETAILED							
REVISIONS 1							
REVISIONS 2							
REVISIONS 3							
REVISIONS 4							
FIELD CHANGES							



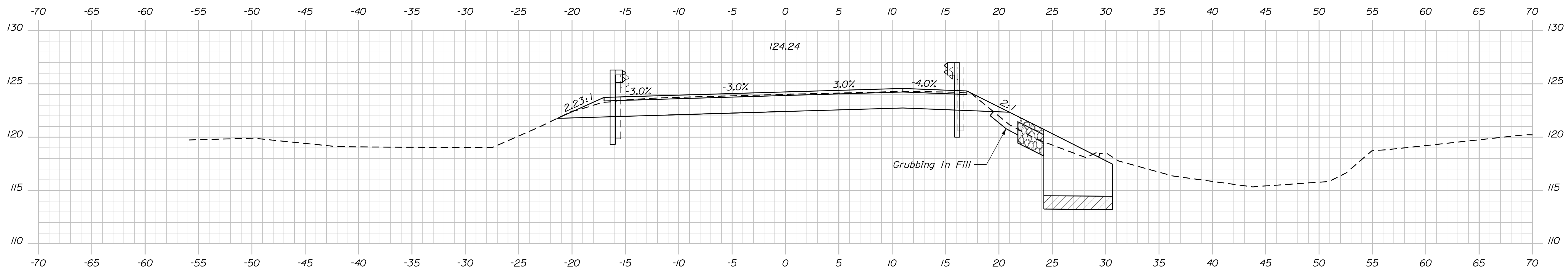
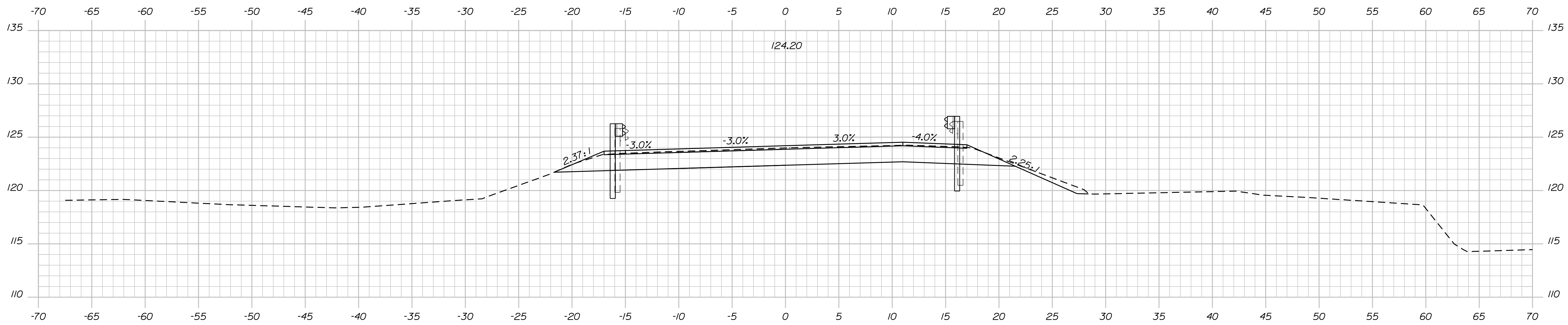
Date: 11/23/2021

Username: Matthew Critchlow

Filename: ... \BRIDGE\MSTA\02\_XSECT\_3+50.dgn Division: BRIDGE



Sta. 4+09.00±, 15'-0"± to Sta. 4+48.46±, 19'2"± Rt.  
 Install 3" W-Beam GR Midw-way Splice Flared Terminal.



STATE OF MAINE  
 DEPARTMENT OF TRANSPORTATION  
 2311800  
 WIN  
 023118.00  
 BRIDGE NO. 3954  
 BRIDGE PLANS

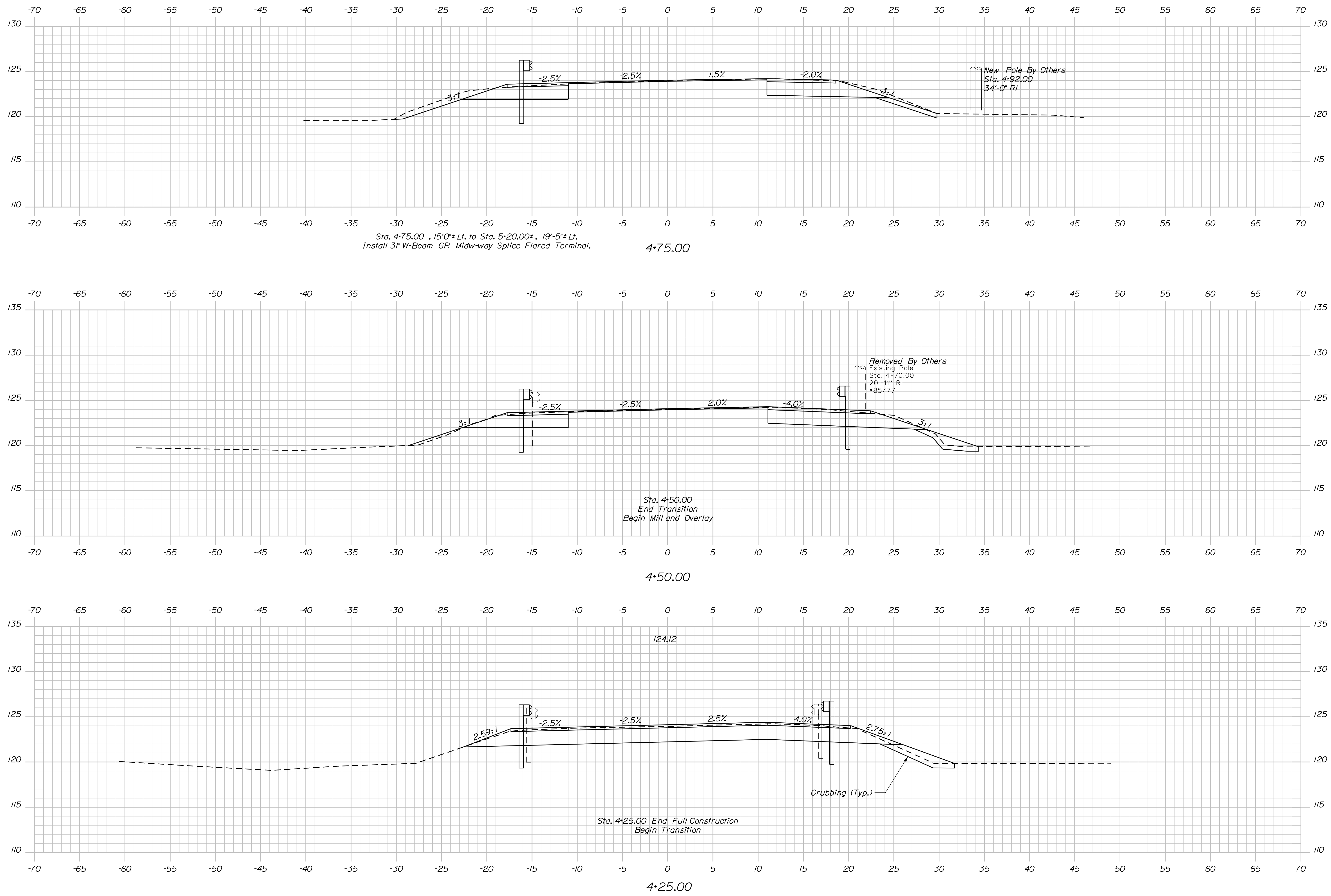
DESIGNED	DATE
CHECKED	BY
DESIGNED	BY
DESIGNED	DATE
REVISIONS 1	P.E. NUMBER
REVISIONS 2	DATE
REVISIONS 3	
REVISIONS 4	
FIELD CHANGES	

PROJ. MANAGER: DEVAN EATON  
 DESIGN-DETAILED: R. NAJOS  
 CHECKED-REVIEWED: D. FATON  
 DESIGN-DETAILED: M. POLIN  
 DESIGN-DETAILED: M. POLIN  
 REVISIONS 1: M. POLIN  
 REVISIONS 2: M. POLIN  
 REVISIONS 3: M. POLIN  
 REVISIONS 4: M. POLIN  
 FIELD CHANGES: M. POLIN

FRAZIER BRIDGE  
 DEARING BROOK  
 ANDROSCOGGIN COUNTY  
 LISBON  
 CROSS SECTIONS

SHEET NUMBER  
 12  
 OF 19

Filename: ... \BRIDGE\MSTA\013\_XSECT\_4+25.dgn Division: BRIDGE Username: Matthew Critchlow Date: 11/23/2021

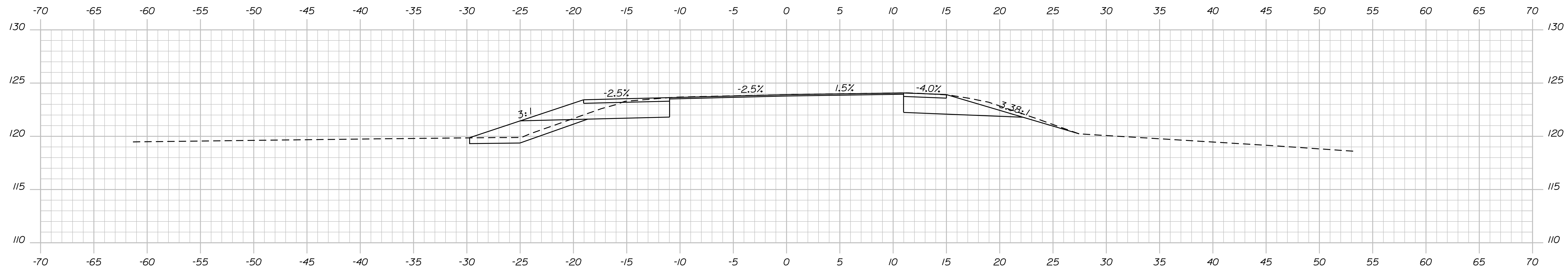


Sta. 4+75.00, 15'-0" Lt. to Sta. 5+20.00, 19'-5" Lt.  
Install 3" W-Beam GR Midway Splice Flared Terminal. 4+75.00

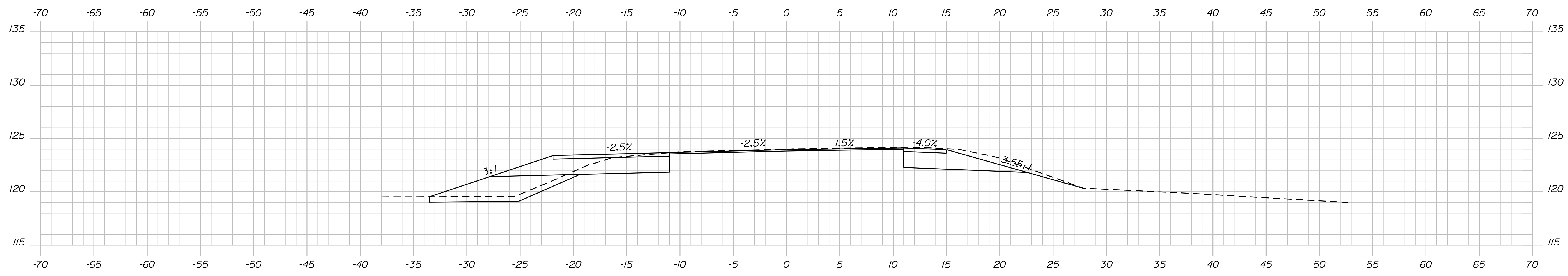
Sta. 4+50.00  
End Transition  
Begin Mill and Overlay 4+50.00

Sta. 4+25.00 End Full Construction  
Begin Transition 4+25.00

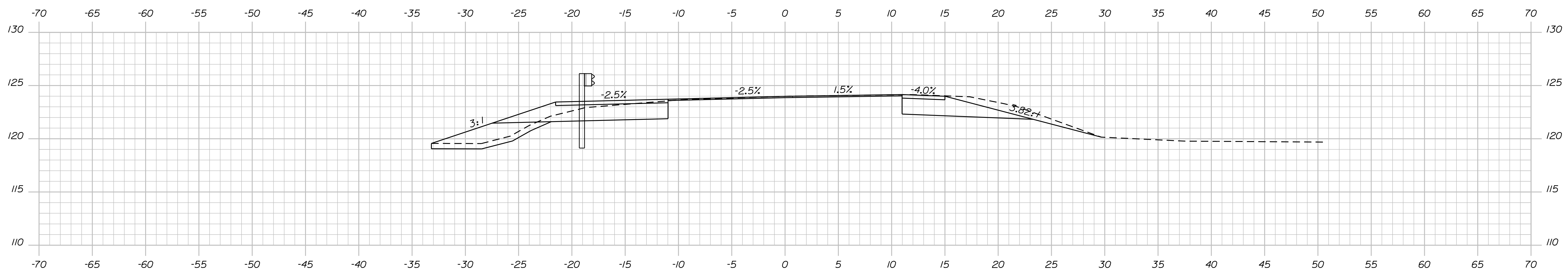
STATE OF MAINE DEPARTMENT OF TRANSPORTATION		2311800		WIN		023118.00		BRIDGE NO. 3954		BRIDGE PLANS	
FRAZIER BRIDGE DEARING BROOK ANDROSCOGGIN COUNTY		LISBON		CROSS SECTIONS		SHEET NUMBER		13		OF 19	
PROJ. MANAGER	DEVAN EATON	BY	M. CRITCHLOW	DATE	3/2020	DESIGN-DETAILED	R. NAJOS	CHECKED-REVIEWED	D. EATON	SIGNATURE	
DESIGNS-DETAILED		DESIGNS-DETAILED		REVISIONS 1		REVISIONS 2		REVISIONS 3		P.E. NUMBER	
REVISIONS 4		FIELD CHANGES								DATE	



5+50.00



5+25.00



5+00.00

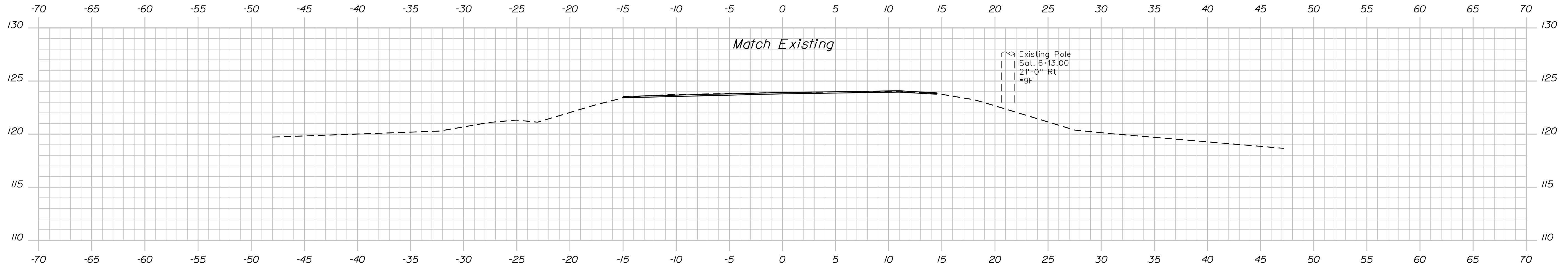
STATE OF MAINE  
DEPARTMENT OF TRANSPORTATION  
2311800  
WIN  
023118.00  
BRIDGE NO. 3954  
BRIDGE PLANS

DESIGNER: M. CRITCHLOW  
CHECKED: R. NAJOS  
DESIGNED: D. FATON  
DATE: 3/2020  
SIGNATURE: \_\_\_\_\_  
P.E. NUMBER: \_\_\_\_\_  
DATE: \_\_\_\_\_

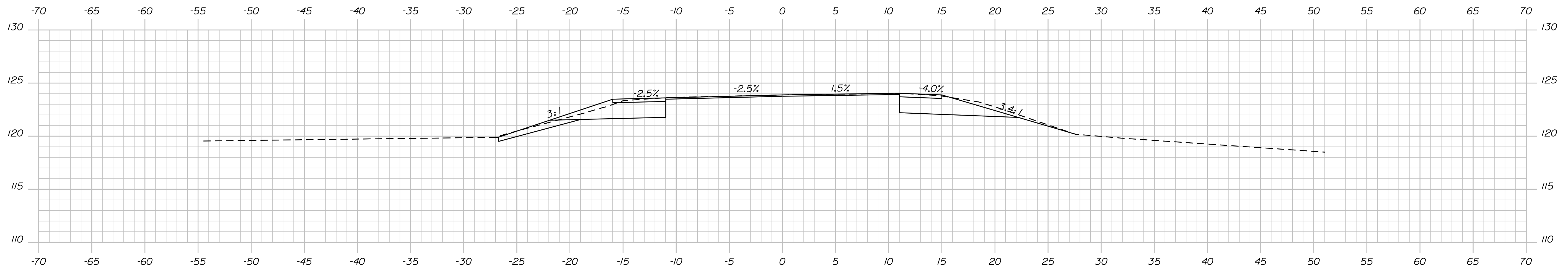
PROJ. MANAGER	DEVAN EATON	BY	DATE
DESIGN-DETAILED	R. NAJOS	M. CRITCHLOW	3/2020
CHECKED-REVIEWED	D. FATON	M. POLIN	10/2020
DESIGN-DETAILED	-----	-----	-----
REVISIONS 1	-----	-----	-----
REVISIONS 2	-----	-----	-----
REVISIONS 3	-----	-----	-----
REVISIONS 4	-----	-----	-----
FIELD CHANGES			

FRAZIER BRIDGE  
DEARING BROOK  
ANDROSCOGGIN COUNTY  
LISBON  
CROSS SECTIONS

SHEET NUMBER  
**14**  
OF 19



6+00.00



5+75.00

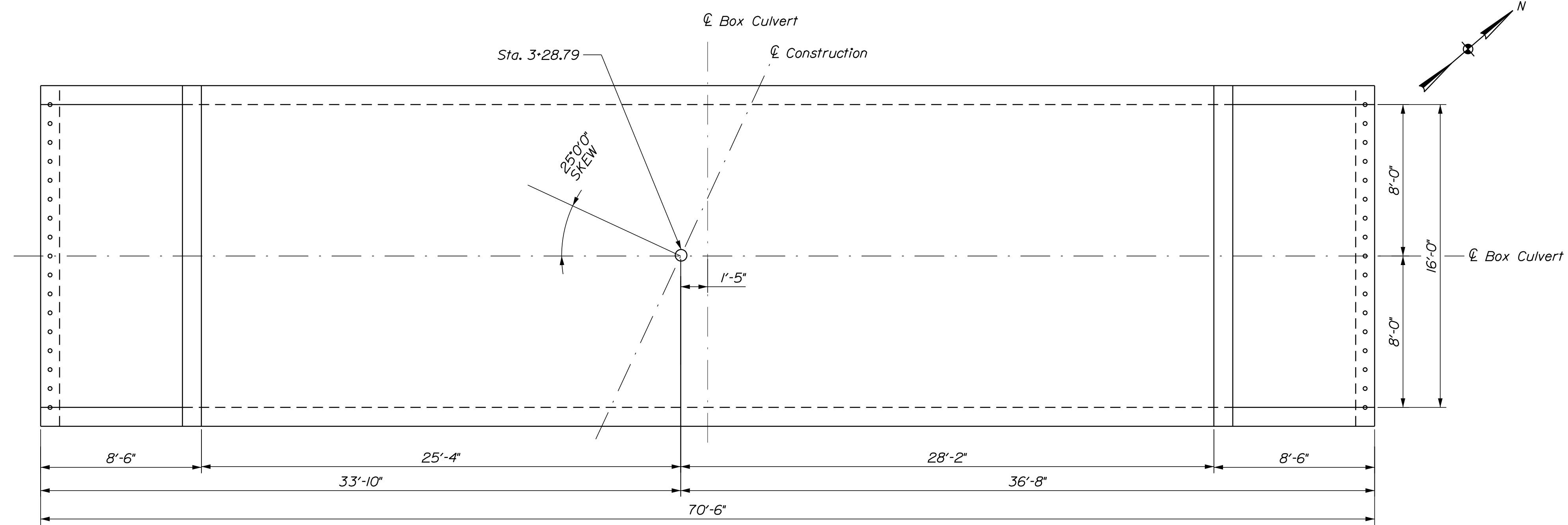
STATE OF MAINE  
DEPARTMENT OF TRANSPORTATION  
2311800  
WIN  
023118.00  
BRIDGE NO. 3954  
BRIDGE PLANS

SIGNATURE  
P.E. NUMBER  
DATE

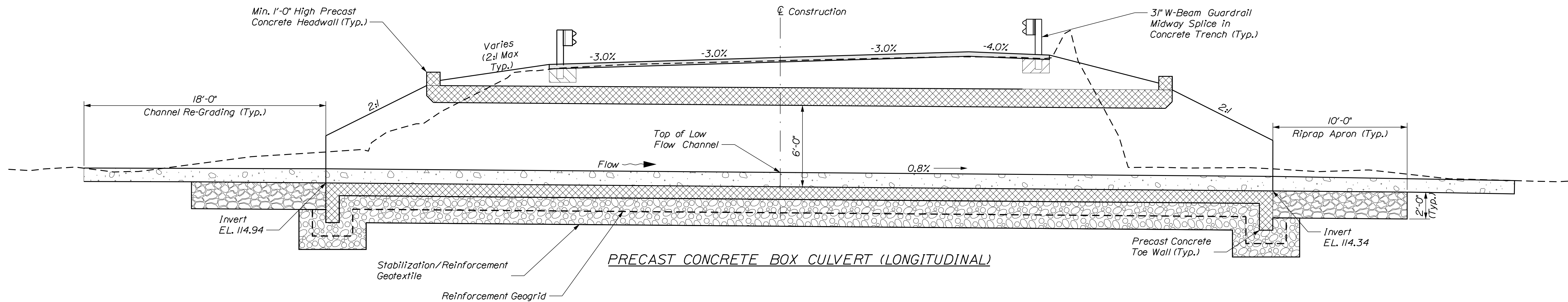
PROJ. MANAGER	DEVAN EATON	BY	DATE
DESIGN-DETAILED	R. NAJOS	M. CRITCHLOW	3/2020
CHECKED-REVIEWED	D. EATON	M. POLLIN	10/2020
DESIGN-DETAILED			
DESIGN-DETAILED			
REVISIONS 1			
REVISIONS 2			
REVISIONS 3			
REVISIONS 4			
FIELD CHANGES			

FRAZIER BRIDGE  
DEARING BROOK  
ANDROSCOGGIN COUNTY  
LISBON  
CROSS SECTIONS

SHEET NUMBER  
15  
OF 19



PRECAST CONCRETE BOX CULVERT PLAN



PRECAST CONCRETE BOX CULVERT (LONGITUDINAL)

DESIGNED	BY	DATE
CHECKED	BY	DATE
DESIGNED	BY	DATE
REVISIONS 1		
REVISIONS 2		
REVISIONS 3		
REVISIONS 4		
FIELD CHANGES		

PROJ. MANAGER	DEVAN EATON
DESIGN-DETAILED	R. NAJOS
CHECKED-REVIEWED	M. POLIN
DESIGNED-REVIEWED	M. POLIN
REVISIONS 1	
REVISIONS 2	
REVISIONS 3	
REVISIONS 4	
FIELD CHANGES	

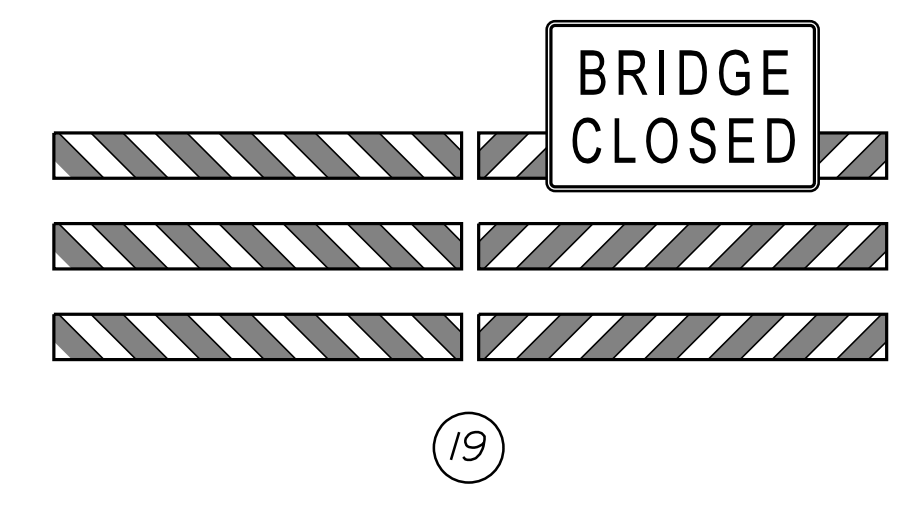
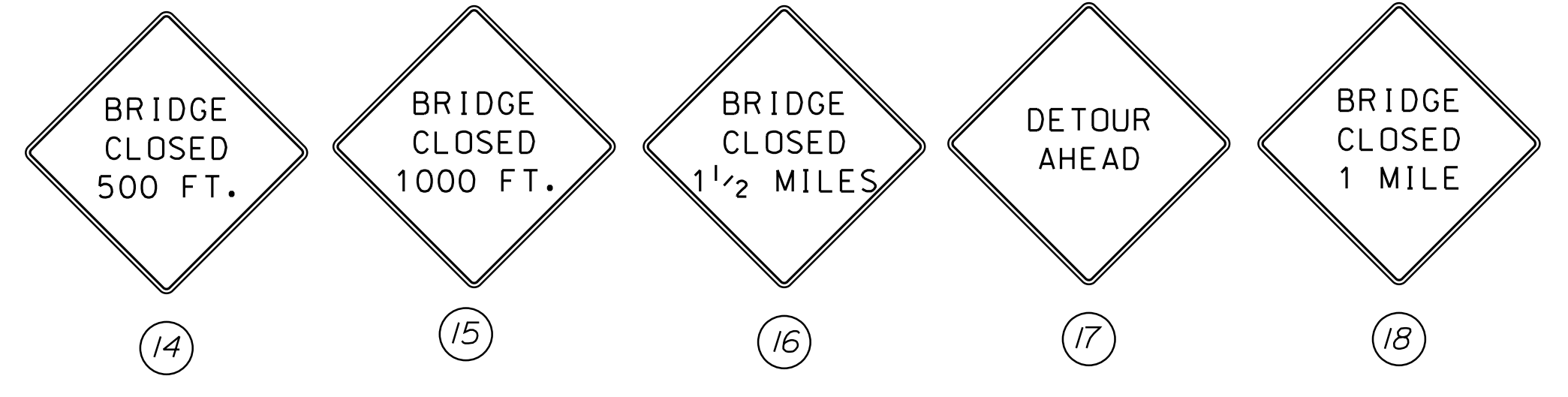
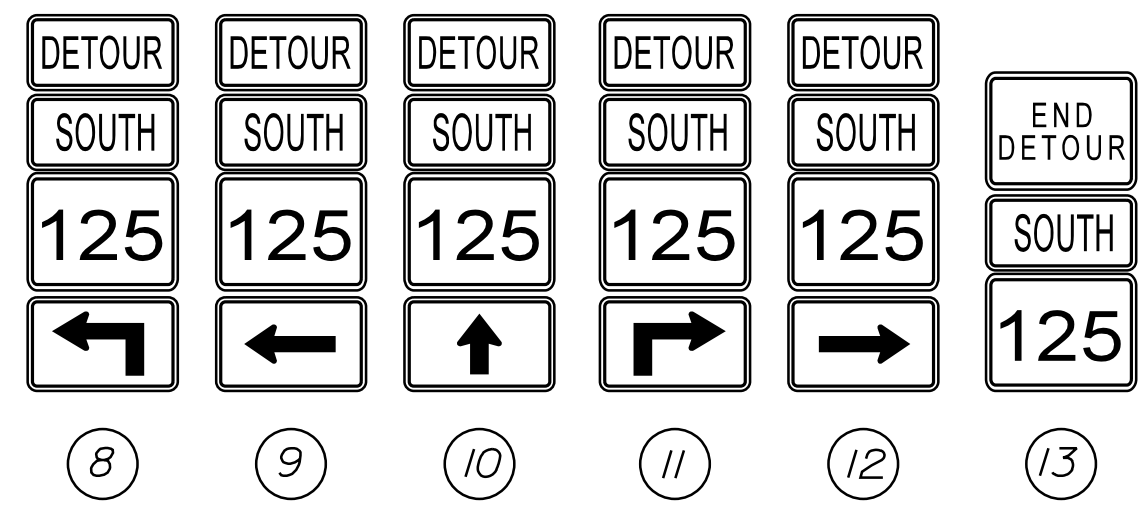
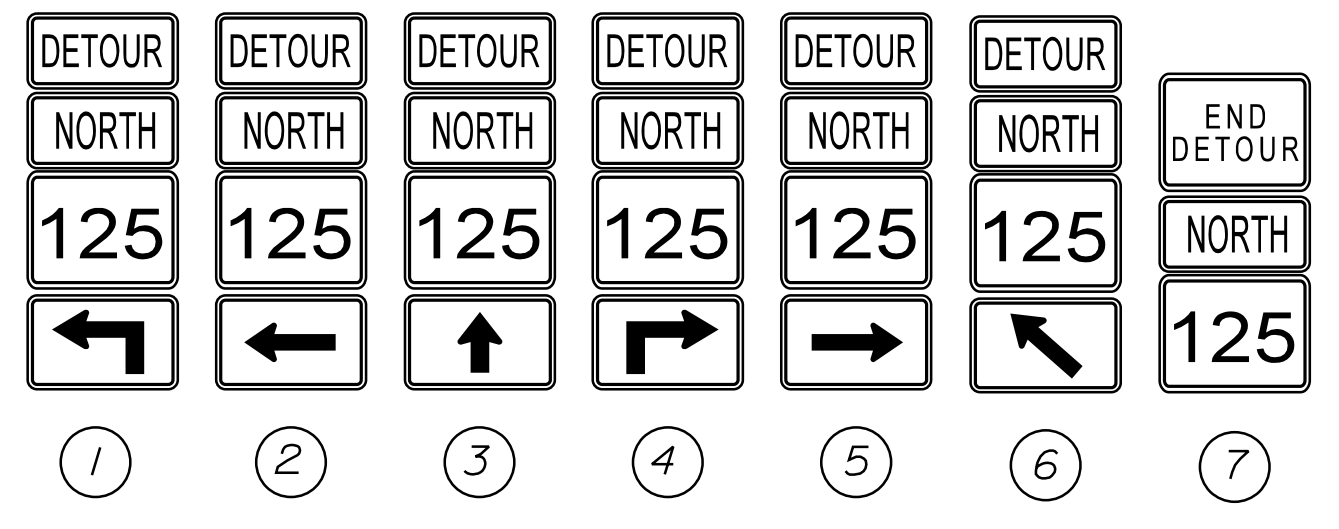
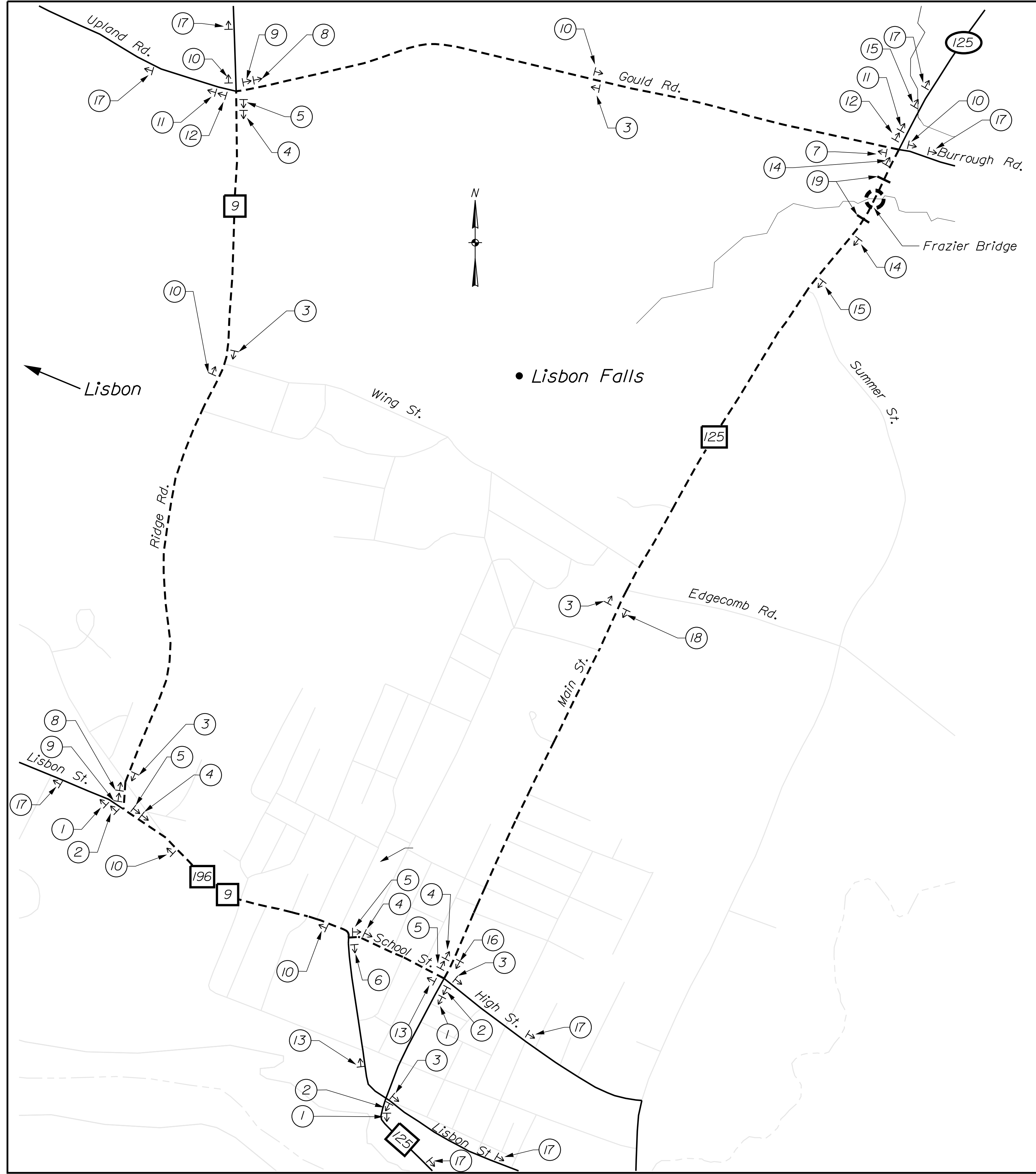
FRAZIER BRIDGE  
DEARING BROOK  
ANDROSCOGGIN COUNTY  
LISBON  
BOX CULVERT DETAILS 1 of 2

SHEET NUMBER

16

OF 19

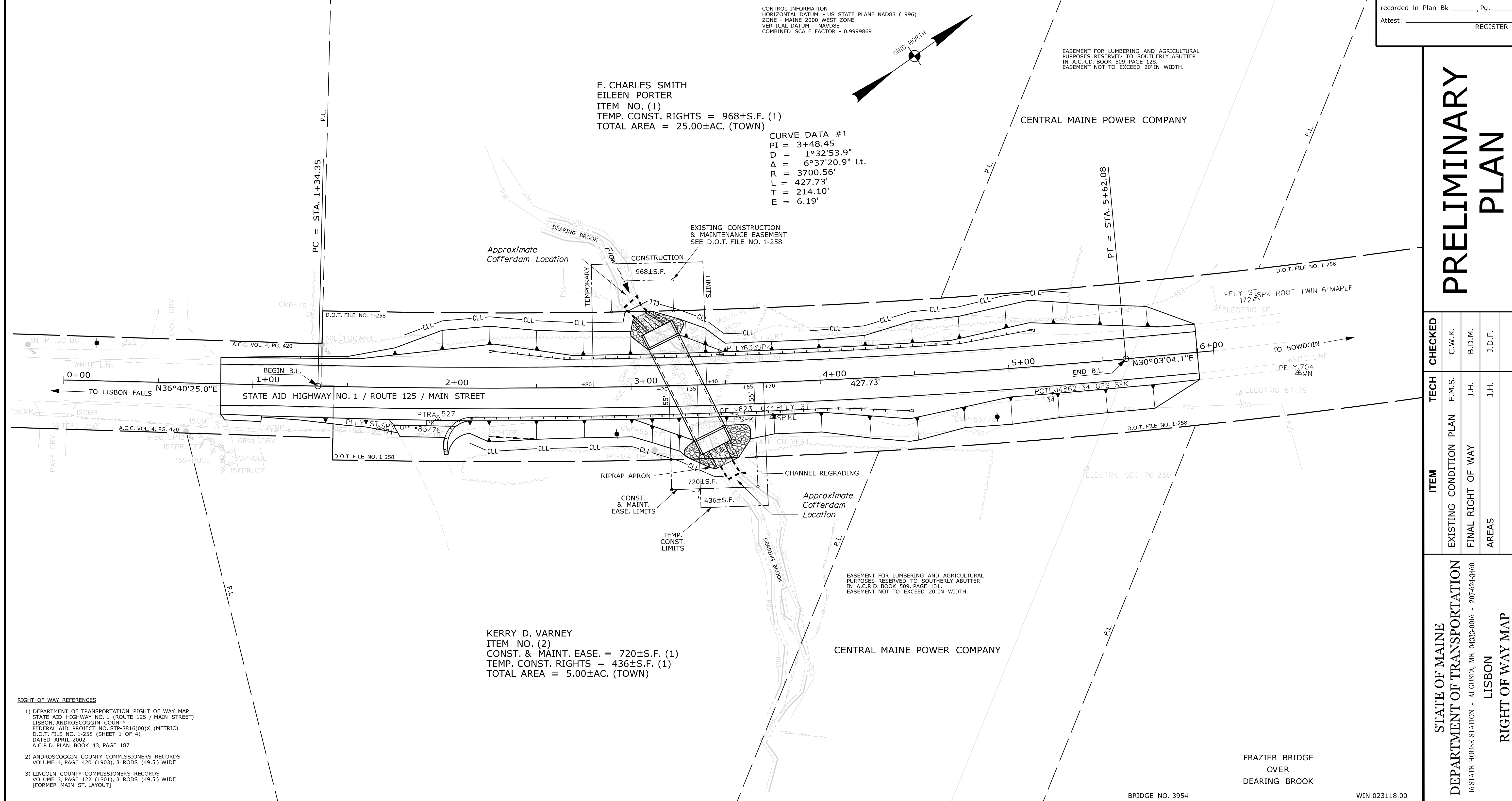




STATE OF MAINE DEPARTMENT OF TRANSPORTATION		2311800	
LIBSON		WIN 023118.00	
FRAZIER BRIDGE DEARING BROOK ANDROSCOGGIN COUNTY		HIGHWAY PLANS	
SHEET NUMBER		BRIDGE NO. 3954	
18		023118.00	
OF 19		HIERARCHY PLANS	
PROJ. MANAGER	DEVAN EATON	DATE	
DESIGN-DETAILED	R. NAUUS	3/2020	
CHECKED-REVIEWED	D. FATON	10/2020	
DESIGN-DETAILED			SIGNATURE
REVISIONS 1			P.E. NUMBER
REVISIONS 2			DATE
REVISIONS 3			
REVISIONS 4			
FIELD CHANGES			

Filename: ... \00\ROW\MSTA019\_RWPLAN1.dgn Division: BRIDGE Date: 11/8/2021 Username: Matthew Critchlow

<p>Town, County, State _____          Approx. Property Lines _____          Existing Right of Way _____          Limits of Wrought Portion _____          Control Of Access _____          New Right of Way _____          New Easement _____          New Temporary Rights _____          New R/W Within Existing R/W _____</p>	<p>New R/W Along Existing R/W _____          Building _____          Trees Conifer _____          Tree Line _____          Water Edge _____          Ledge _____          Fence CHAIN LINK _____          Sign _____</p>	<p><b>PLAN LEGEND</b></p> <p>Existing Proposed</p> <p>Sanitary Sewer _____          Telephone Line _____          Electric Line _____          Water Line _____          Underdrain Line _____          Gas Line _____          Guardrail _____          Culvert _____</p>	<p>Travelled Way _____          Ditch _____          Catch Basin _____          Manhole _____          Sewer Manhole _____          Utility Pole _____          Fire Hydrant _____          Curbing _____</p>	<p>Cut Line _____          Stonewall _____          Baseline _____          Monument _____          Iron Rod Found _____          Replacement Pin Set _____</p> <p>Fill Line _____          Retaining Wall _____          Traverse Point _____          Pipe Found _____</p>	<p>THIS PLAN WAS PREPARED IN CONNECTION WITH THE DEPARTMENT'S ACQUISITION OF REAL PROPERTY FOR TRANSPORTATION PURPOSES. IT CANNOT BE USED TO ESTABLISH LEGAL BOUNDARIES BETWEEN ABUTTING PROPERTY OWNERS.</p> <p style="text-align: center;">25 0 25 50 75 100 Scale of Feet</p>	<p style="text-align: center;">STATE OF MAINE REGISTRY OF DEEDS</p> <p>COUNTY _____          RECEIVED _____,          at _____ h _____ m _____ M and          recorded in Plan Bk _____, Pg. _____          Attest: _____ REGISTER</p>
--	--	--	---	--	--	--



# PRELIMINARY PLAN

ITEM	TECH	CHECKED
EXISTING CONDITION PLAN	E.M.S.	C.W.K.
FINAL RIGHT OF WAY AREAS	J.H.	J.H.
		B.D.M.
		J.D.F.

STATE OF MAINE  
 DEPARTMENT OF TRANSPORTATION  
 16 STATE HOUSE STATION - AUGUSTA, ME 04333-0016 - 207-024-3460  
 LISBON  
 RIGHT OF WAY MAP

NO.	DATE	REVISIONS DESCRIPTION	BY	PLAN FILED IN PLAN BOOK	PAGE	COUNTY RECORD	BRUCE A. VAN NOTE
							COMMISSIONER JOYCE NOEL TAYLOR CHIEF ENGINEER
							DATE

STATE AID HIGHWAY NO. 1 ROUTE 125 / MAIN STREET LISBON ANDROSCOGGIN COUNTY FEDERAL AID PROJECT NO. 2311800	OCTOBER 2021 SCALE 1" = 25'	RIGHT-OF-WAY MAP SHEET 1 OF 1	D.O.T. FILE NO. 1-349
---	--------------------------------	----------------------------------	-----------------------

SHEET NUMBER <b>19</b> OF 19
------------------------------------