

ESTIMATED QUANTITIES			
ITEM NO.	DESCRIPTION	QUANTITY	UNIT
202.127	REMOVING OF EXISTING BITUMINOUS PAVEMENT (820 SY)	1	LS
202.202	REMOVING PAVEMENT SURFACE	1310	SY
403.2081	HOT MIX ASPHALT 12.5 mm HMA SURFACE POLYMER MODIFIED	110	TON
403.2131	HOT MIX ASPHALT 12.5 mm HMA BASE POLYMER MODIFIED	123	TON
409.15	BITUMINOUS TACK COAT APPLIED	70	GAL
508.14	HIGH PERFORMANCE WATERPROOFING MEMBRANE (834 SY)	1	LS
514.06	CURING BOX FOR CONCRETE CYLINDERS	1	EA
515.20	PROTECTIVE COATING FOR CONCRETE SURFACES	344	SY
518.391	REPAIRING GRANITE CURB JOINT AND BEDDING MORTAR	170	LF
518.50	REPAIR OF UPWARD FACING SURFACES - TO REINFORCING STEEL < 8 IN.	130	SF
518.51	REPAIR OF UPWARD FACING SURFACES - BELOW REINFORCING STEEL < 8 IN.	38	SF
518.70	REPAIR OF OVERHEAD SURFACES < 8 IN.	10	SF
520.232	EXPANSION DEVICE - ASPHALTIC PLUG JOINT	41	LF
520.243	BRIDGE JOINT MODIFICATION, TYPE 3	1	EA
526.301	TEMPORARY CONCRETE BARRIER TYPE 1 (540 LF)	1	LS
527.34	WORK ZONE CRASH CUSHIONS	4	UN
627.51	6 INCH TEMPORARY PAVEMENT TAPE YELLOW OR WHITE	1200	LF
627.733	4 INCH WHITE OR YELLOW PAINTED PAVEMENT MARKING LINE	227	LF
627.77	REMOVING OF EXISTING PAVEMENT MARKING.	367	SF
629.05	HAND LABOR, STRAIGHT TIME	20	HR
631.12	ALL PURPOSE EXCAVATOR (INCLUDING OPERATOR)	10	HR
631.172	TRUCK-LARGE (INCLUDING OPERATOR)	10	HR
631.21	ROAD BROOM (INCLUDING OPERATORS AND HAULER)	10	HR
639.19	FIELD OFFICE TYPE B	1	EA
652.312	TYPE III BARRICADE	4	EA
652.33	DRUM	40	EA
652.34	CONE	40	EA
652.35	CONSTRUCTION SIGNS	240	SF
652.361	MAINTENANCE OF TRAFFIC CONTROL DEVICES (60 CD)	1	LS
652.38	FLAGGERS	200	HR
656.75	TEMPORARY SOIL EROSION AND WATER POLLUTION CONTROL	1	LS
659.10	MOBILIZATION	1	LS

GENERAL CONSTRUCTION NOTES

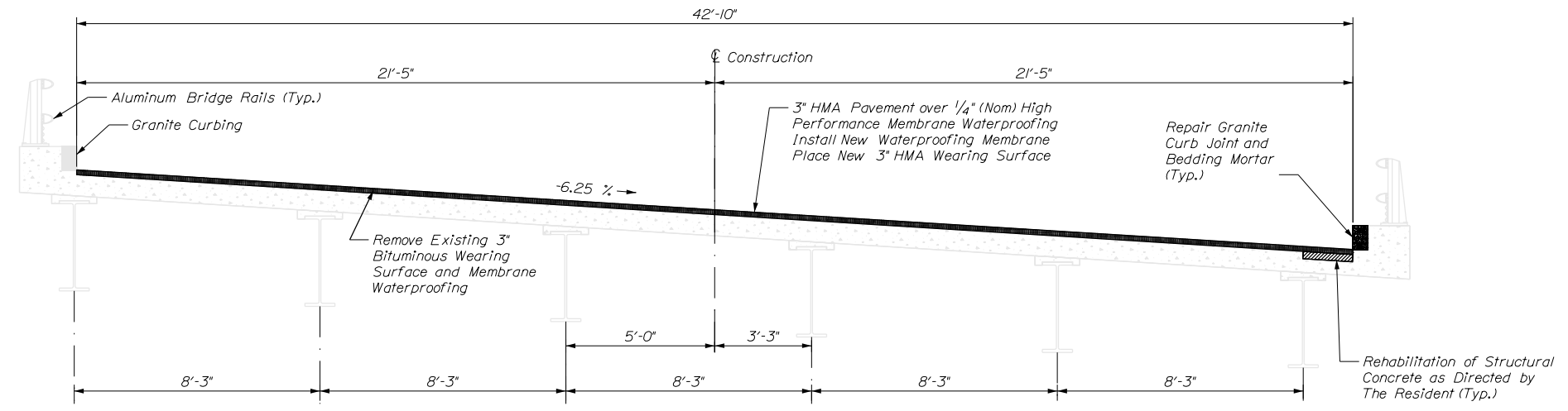
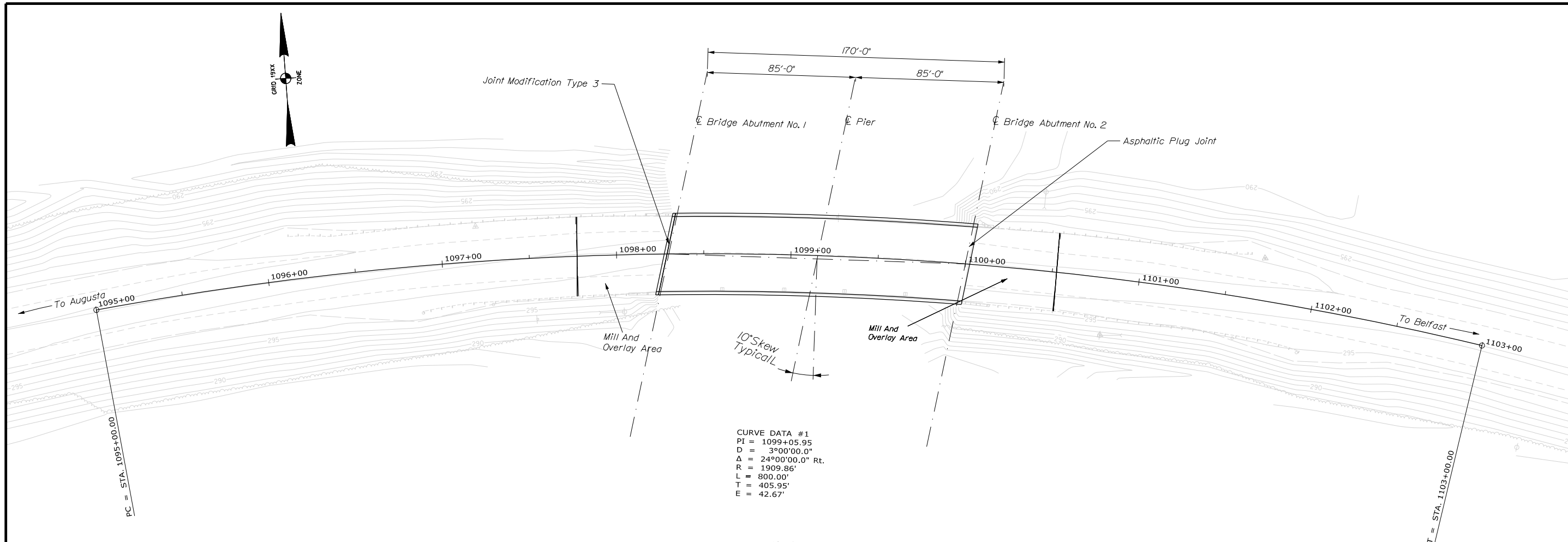
- Project information referred to below may be accessed at the following MaineDOT web address: <http://www.maine.gov/mdot/contractors/>.
- The existing bridge plans may be accessed at the MaineDOT web address. The plans are reproductions of the original drawings as prepared for the construction of the bridge. It is very unlikely that the plans will show any construction field changes or any alterations which may have been made to the bridge during its life span.
- Quantities included for pay items measured and paid for by Lump Sum are estimated quantities and are provided by MaineDOT for informational purposes only. Lump Sum pay items will be paid for at the Contract Bid amount, with no addition or reduction in payment to the Contractor if the actual final quantities are different from the MaineDOT provided estimated quantities, except as follows:
 - If a Lump Sum pay item is eliminated, the requirements of Standard Specifications Section 109.2, Elimination of Items, will take precedence.
 - If other Contract Documents specifically allow a change in payment for a Lump Sum pay item, those requirements will be followed.
 - If a design change results in changes to estimated quantities for Lump Sum pay items, price adjustments will be made in accordance with Standard Specifications Section 109.7, Equitable Adjustments to Compensation.
- Protective Coating for Concrete Surfaces shall be applied to the following areas:
 - All exposed surfaces of concrete curbs, Fascias down to the drip notch, All exposed surfaces of Concrete Transition Barriers, Top of abutment backwalls and to one foot below the top of backwalls on the back side.
- Payment for Removing the Existing Wearing Surface and Waterproofing Membrane from the Bridge Deck will be made under item 202.127 Removing of Existing Bituminous Pavement. Payment for Removing the Existing Pavement from the Approaches will be made under item 202.202, Removing Pavement Surface.

SUPERSTRUCTURE NOTES

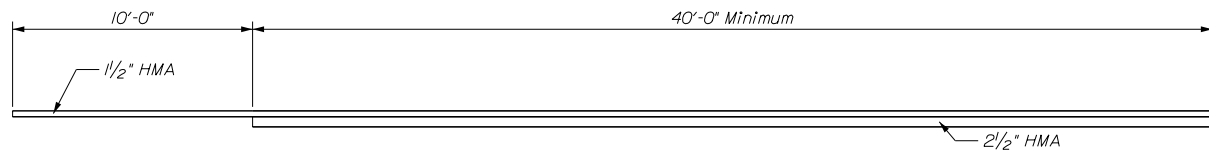
- Reinforcing steel shall have a minimum concrete cover of 2 inches unless otherwise noted.
- Mortar for bedding and for joints in the granite curb shall contain an approved non-shrink additive.
- The Contractor shall repair areas of concrete deck deterioration as directed by the Resident. Locations of deck repairs are undetermined for this bridge. Contractor shall identify and mark areas for deck repair after removing the existing wearing surface. Coordinate with the Resident. Payment for deck repair work shall be under the appropriate 518 pay item.
- The Contractor shall repair areas of deteriorated granite curb joint and bedding mortar on the deck as directed by the Resident. Locations of joints which are to be repointed are undetermined. Payment for the granite curb joint repair work shall be made under Pay Item 518.391, Repairing Granite Curb Joint and Bedding Mortar.
- The seal furnished for the new joint shall have a minimum movement rating of 1.375". The Department shall approve all seals prior to fabrication of the expansion device.
- The Contractor shall field measure the height of shim plate and width of backwall required for joint modification. Field measurements shall be submitted with joint modification submittals for review and approval by the Resident.
- Apply cold applied galvanizing to the exposed steel joint. This work will be incidental to Item 520.243 Bridge Joint Modification Type 3.

STATE OF MAINE		DEPARTMENT OF TRANSPORTATION		STP-2173(900)		WIN		BRIDGE NO. 2756		BRIDGE PLANS	
SHEEPSKOT BRIDGE		SHEEPSKOT RIVER		WALDO COUNTY		PALERMO		EST. QUANTITIES, GENERAL CONSTRUCTION		NOTES AND SUPERSTRUCTURE NOTES:	
PROJ. MANAGER	J. STILWELL	CHECKED-REVIEWED	J. STILWELL	DESIGNS-DETAILED	D. EATON	DESIGNS-DETAILED	REVISIONS 1	REVISIONS 2	REVISIONS 3	REVISIONS 4	FIELD CHANGES
DATE	3/09/2018	BY	J. LEWITT	M. LACHANCE	SIGNATURE	P.E. NUMBER	DATE				
SHEET NUMBER											
2											
OF 5											

Filename: ... \003_GENERAL PLANS AND SECTIONS.dgn Revision: BRIDGE
 Username: James.L.Leavitt Date: 5/8/2018

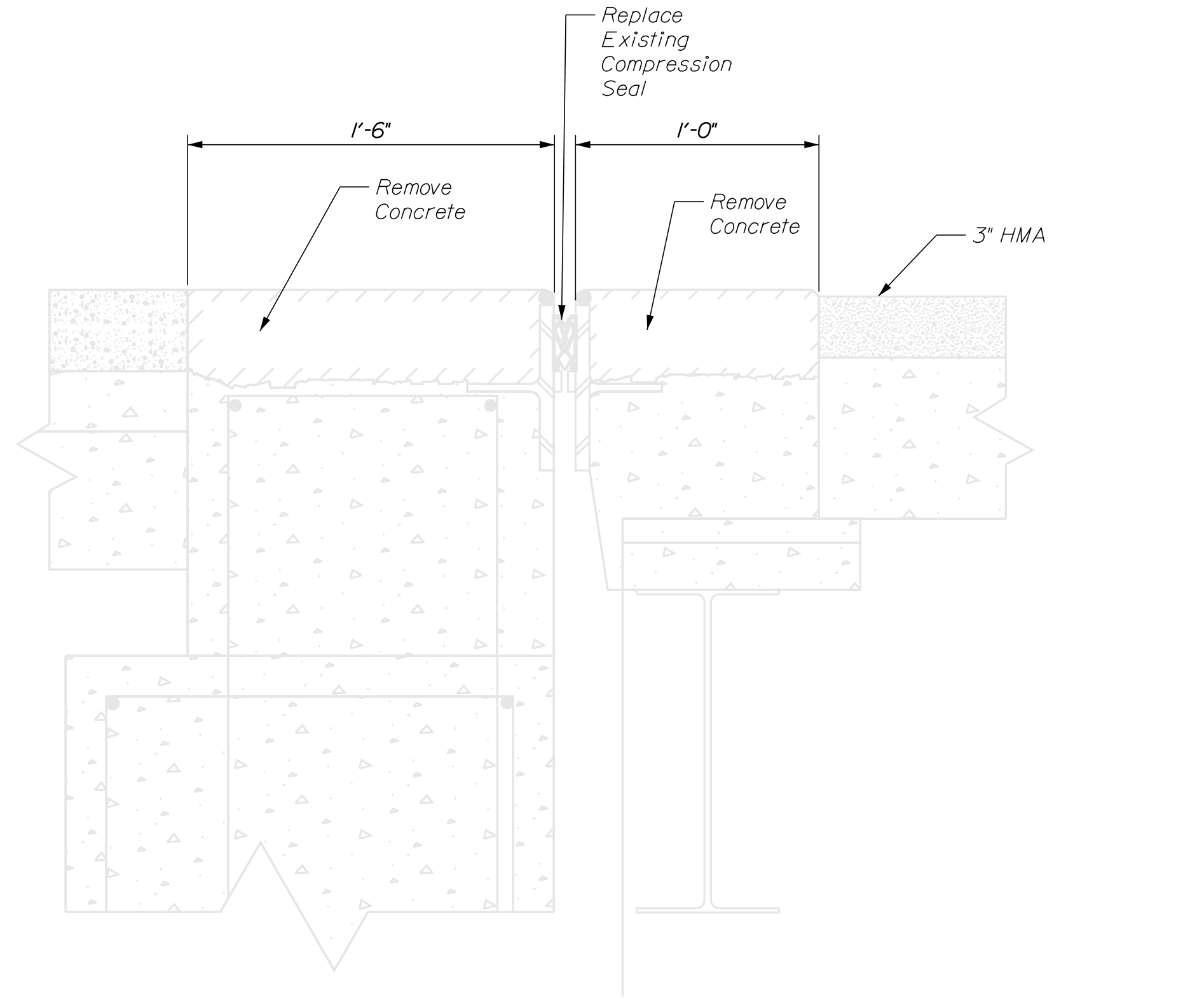


TRANSVERSE CROSS SECTION
 EXISTING BRIDGE

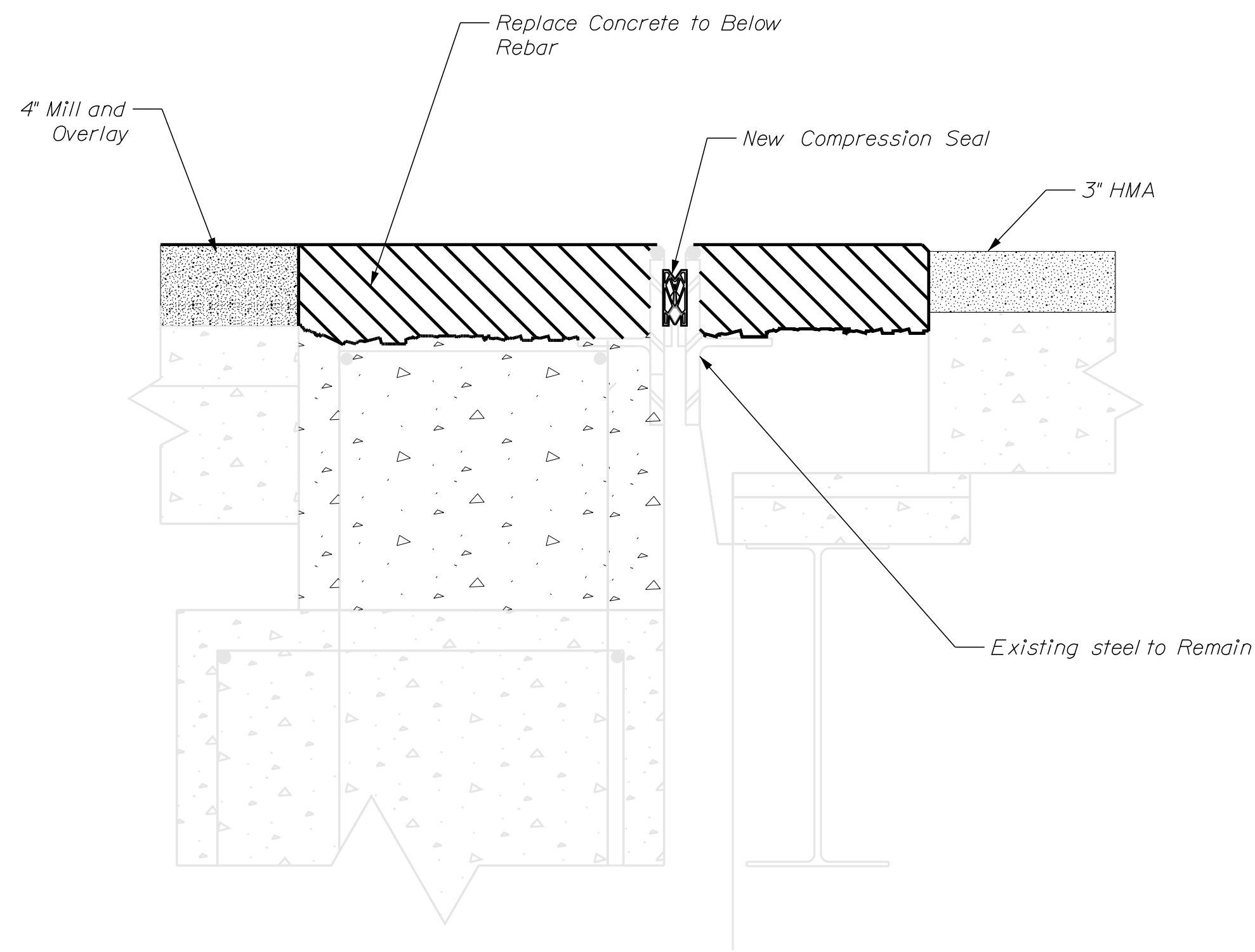


PAVEMENT TRANSITION DETAIL

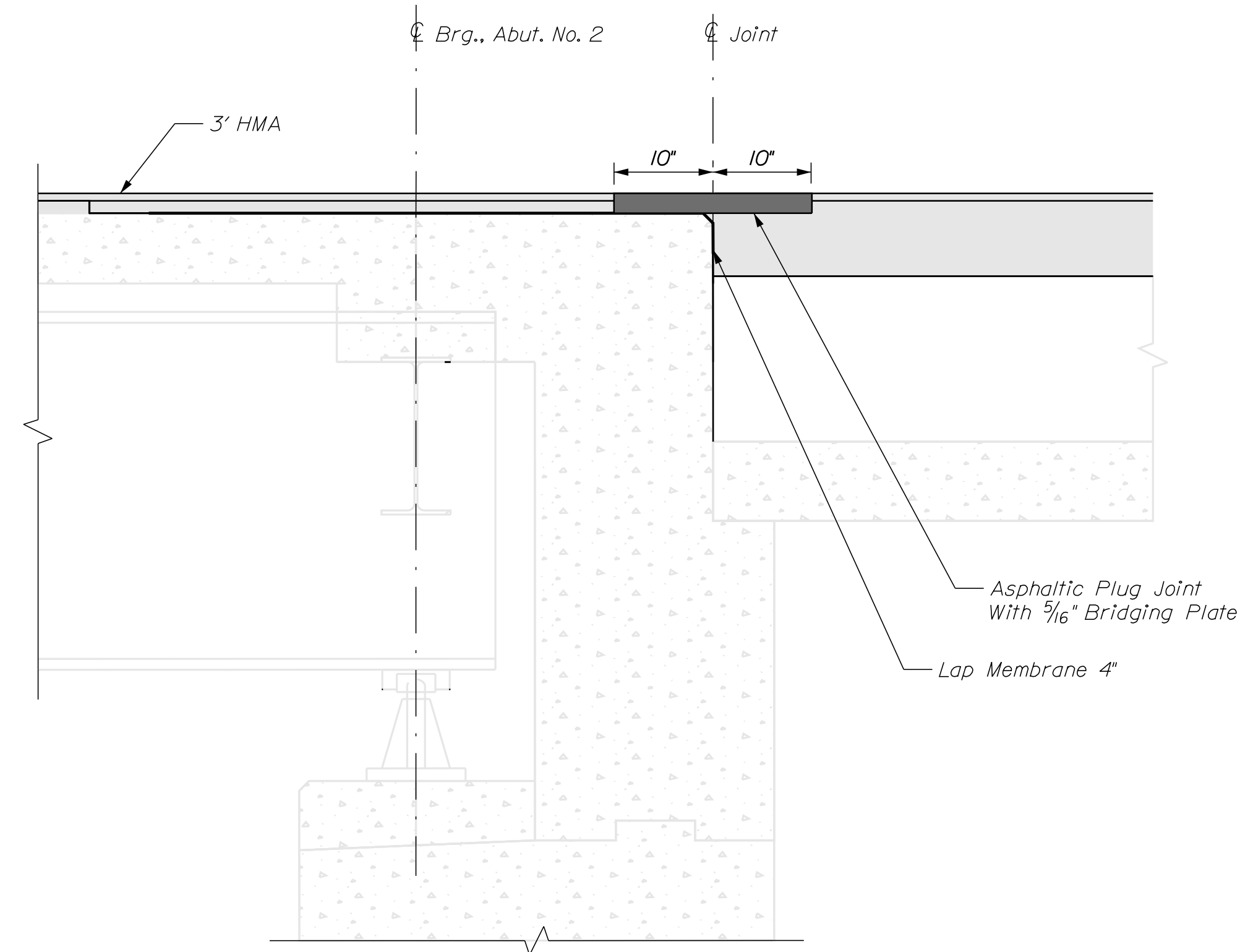
STATE OF MAINE DEPARTMENT OF TRANSPORTATION		STP-2173(900)		BRIDGE NO. 2758 WIN 21739.00 BRIDGE PLANS	
SHEEPSHOT BRIDGE SHEEPSHOT RIVER WALDO COUNTY		PALERMO		GENERAL PLAN & SECTIONS	
PROJ. MANAGER	J. STILWELL	BY	J. STILWELL	DATE	3/09/2018
DESIGN DETAILED	J. STILWELL	CHECKED-REVIEWED	JAMES LEAVITT	SIGNATURE	
DESIGNED	D. EATON	DESIGNED-REVIEWED		P.E. NUMBER	
DESIGNS DETAILED		DESIGNS DETAILED		DATE	
REVISIONS 1		REVISIONS 1			
REVISIONS 2		REVISIONS 2			
REVISIONS 3		REVISIONS 3			
REVISIONS 4		REVISIONS 4			
FIELD CHANGES		FIELD CHANGES			
SHEET NUMBER		3			
		OF 5			



ABUTMENT NO. 1 JOINT DEMOLITION



ABUTMENT NO. 1 JOINT MODIFICATION



ABUTMENT NO. 2 JOINT MODIFICATION

STATE OF MAINE
DEPARTMENT OF TRANSPORTATION
STP-2173(900)
WIN
BRIDGE NUMBER 2758 21735.00
BRIDGE PLANS

PROJ. MANAGER	J. STILLWELL	BY	J. LEAVITT	DATE	4/18/18
DESIGN DETAILED	J. STILLWELL	CHECKED/REVIEWED	J. LEAVITT	SIGNATURE	
DESIGN DETAILED		DESIGN DETAILED		P.E. NUMBER	
REVISIONS 1		REVISIONS 1		DATE	
REVISIONS 2		REVISIONS 2			
REVISIONS 3		REVISIONS 3			
REVISIONS 4		REVISIONS 4			
FIELD CHANGES					

SHEEPSHOT BRIDGE
SHEEPSHOT RIVER
WALDO COUNTY
PALERMO
ABUTMENT DETAILS

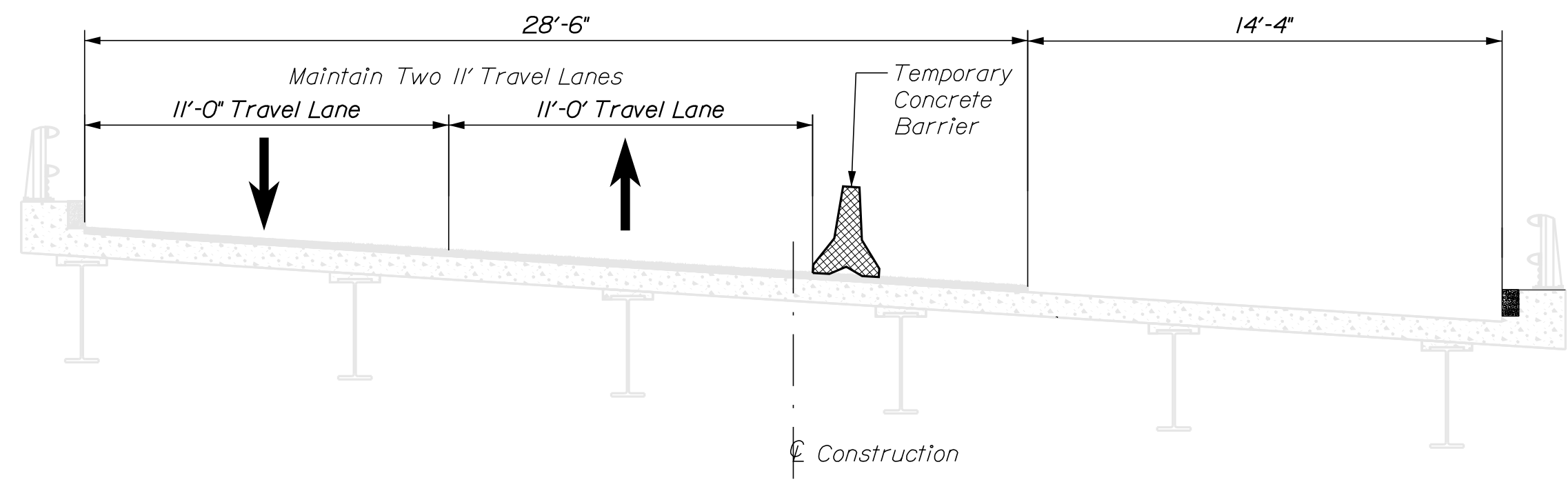
SHEET NUMBER
4
OF 5

Date: 5/7/2018

Username: James.L.Leavitt

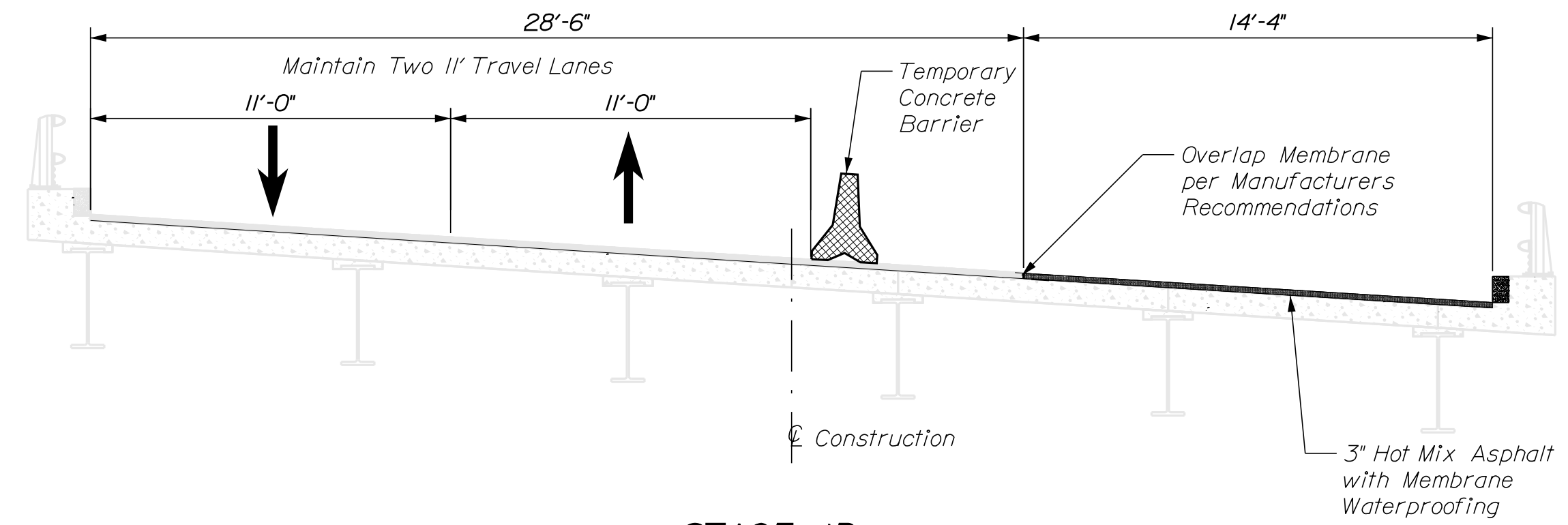
Division: BRIDGE

Filename: ... \MSTA\005_StageConstr.dgn



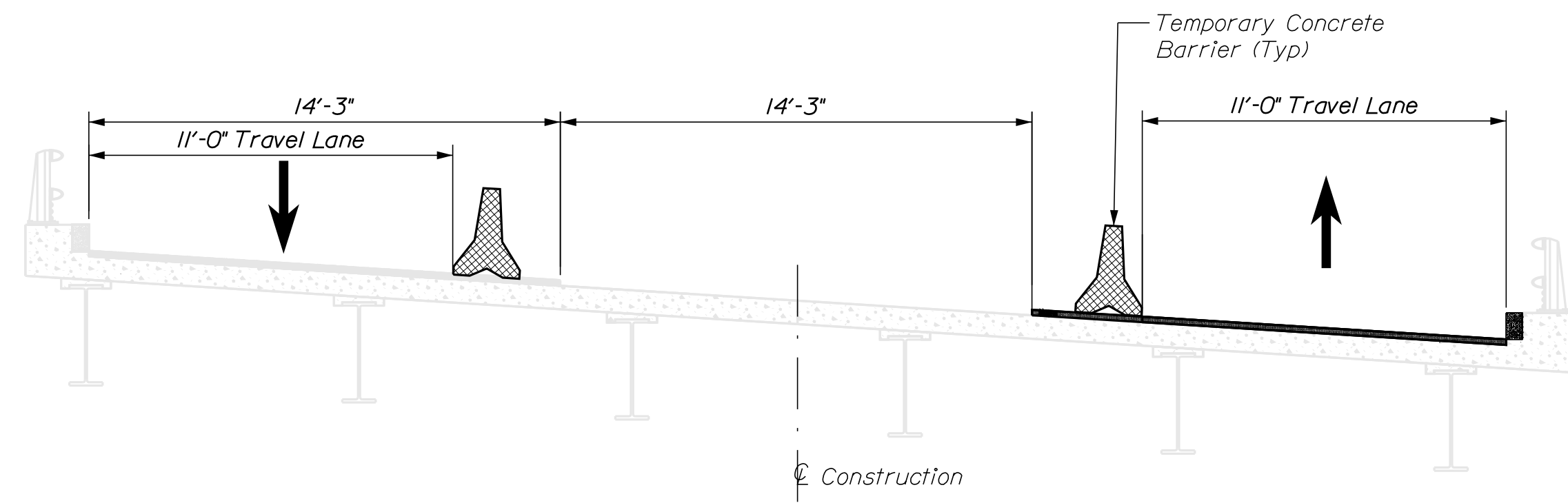
STAGE 1A

Remove Bituminous Wearing Surface and Area of Concrete to be Rehabilitated
Use Cones/Barrels to Define Travel Lanes During This Stage



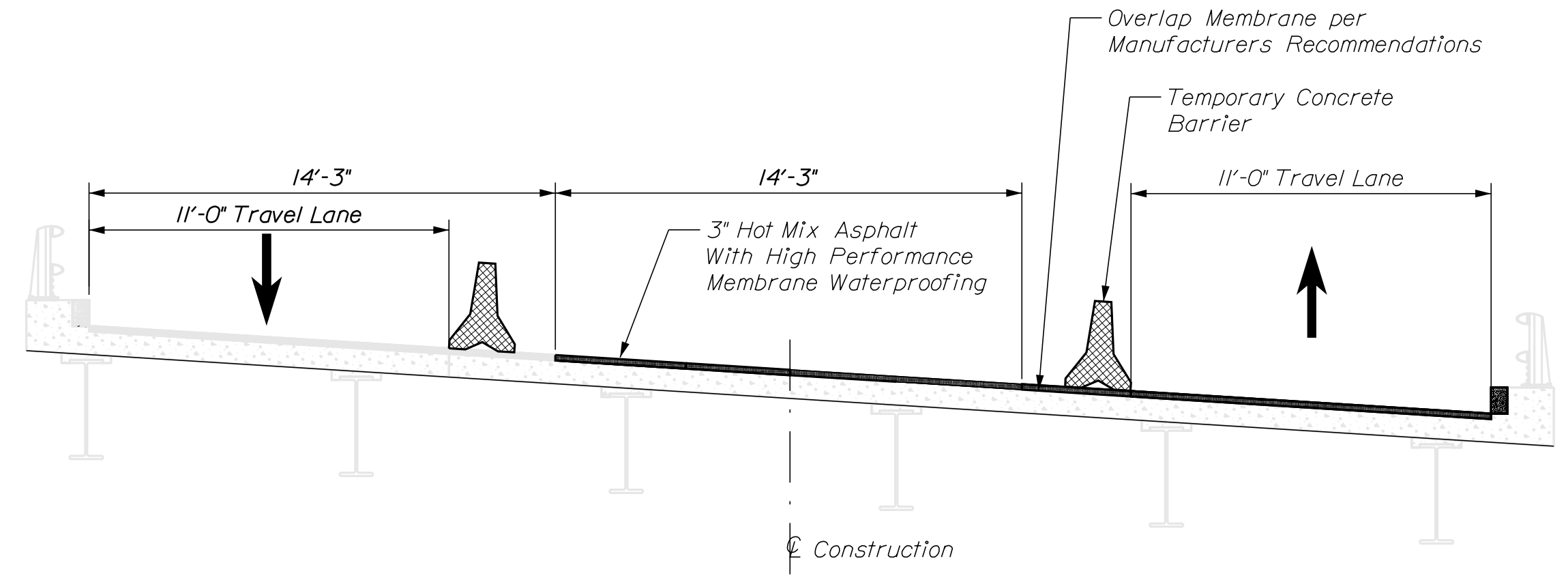
STAGE 1B

Place New Concrete in Areas of Rehabilitation, High Performance Membrane, and Hot Mix Asphalt
Use Cones/Barrels to Define Travel Lanes During This Stage



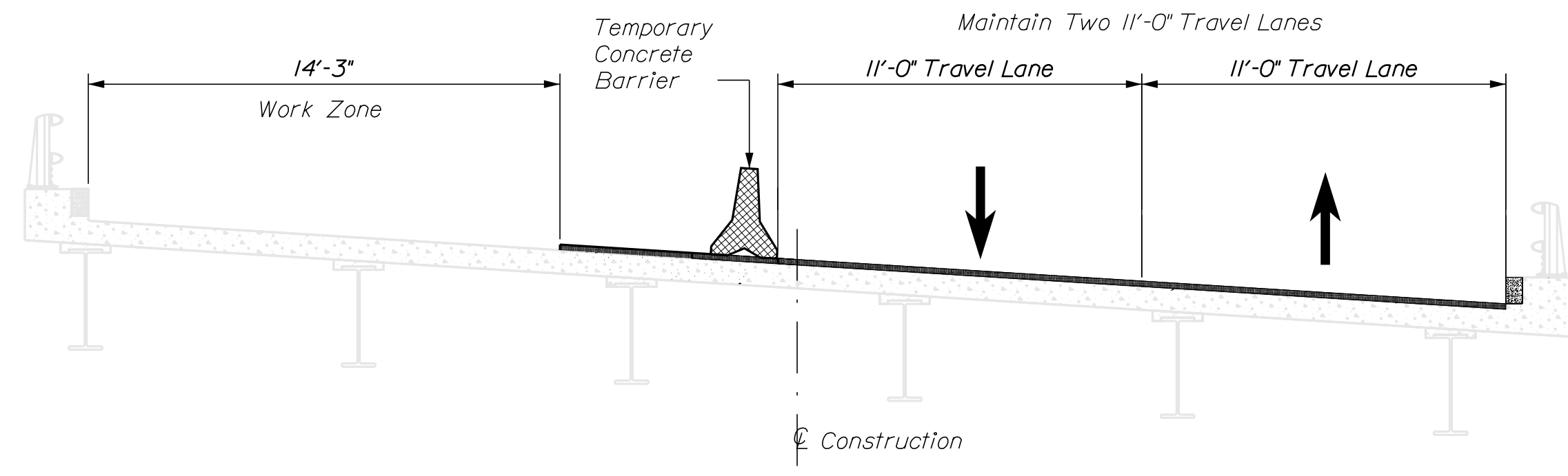
STAGE 2A

Remove Bituminous Wearing Surface and Area of Concrete to be Rehabilitated



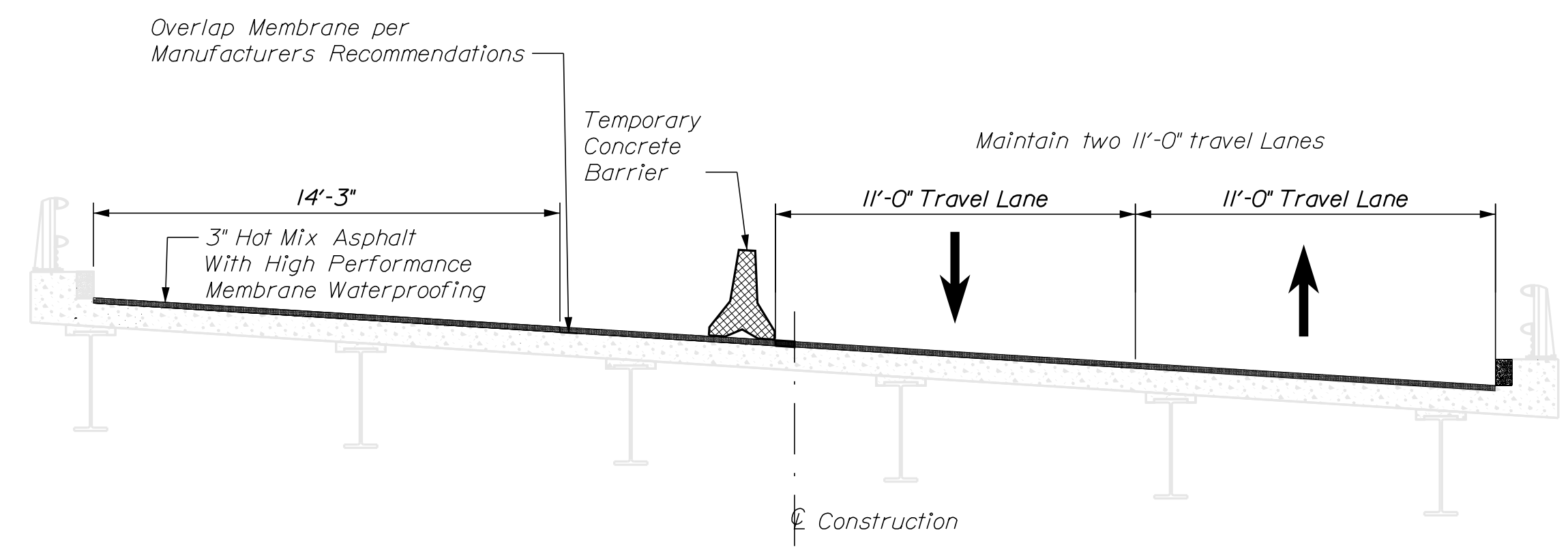
STAGE 2B

Place New Concrete in Areas of Rehabilitation, High Performance Membrane, and Hot Mix Asphalt



STAGE 3A

Remove Bituminous Wearing Surface and Area of Concrete to be Rehabilitated
Use Cones/Barrels to Define Travel Lanes During This Stage



STAGE 3B

Place New Concrete in Areas of Rehabilitation, High Performance Membrane, and Hot Mix Asphalt
Use Cones/Barrels to Define Travel Lanes During This Stage

STATE OF MAINE
DEPARTMENT OF TRANSPORTATION
STP-2173(900)
BRIDGE NO. 2758
WIN 21739.00
BRIDGE PLANS

PROJ. MANAGER	J. STILLWELL	BY	JAMES LEAVITT	DATE	4/6/2018
DESIGN DETAILED	J. STILLWELL	CHECKED/REVIEWED	M. LACHANCE	SIGNATURE	
DESIGNS DETAILED		DESIGNS DETAILED		P.E. NUMBER	
REVISIONS 1		REVISIONS 1		DATE	
REVISIONS 2		REVISIONS 2			
REVISIONS 3		REVISIONS 3			
REVISIONS 4		REVISIONS 4			
FIELD CHANGES					

SHEEPSKOT BRIDGE
SHEEPSKOT RIVER
WALDO
PALERMO
STAGED CONSTRUCTION PLAN

SHEET NUMBER
5
OF 5