

STATE OF MAINE DEPARTMENT OF TRANSPORTATION



SPECIFICATIONS

Design: Load and Resistance Factor Design per AASHTO LRFD Bridge Design Specifications, Eighth Edition 2017.

DESIGN LOADING

Live Load HL - 93 Modified for Strength I

TRAFFIC DATA

Current (2018) AADT 610
 Future (2038) AADT 670
 DHV - % of AADT 14
 Design Hour Volume 94
 Heavy Trucks (% of AADT) 30
 Heavy Trucks (% of DHV) 16
 Directional Distribution (% of DHV) 54
 18 kip Equivalent P 2.0 394
 18 kip Equivalent P 2.5 376
 Design Speed (mph) N/A

MATERIALS

Concrete:
 Barriers, Curbs & Transition Barriers Class "LP"
 All Other Class "A"
 Reinforcing Steel ASTM A 615/A 615M, Grade 60

BASIC DESIGN STRESSES

Concrete:
 Class "A" $f'c = 4000$ psi
 Class "LP" $f'c = 5000$ psi
 Reinforcing Steel $f_y = 60,000$ psi
 Structural Steel:
 ASTM A 709, Grade 36 $F_y = 36,000$ psi

LIST OF DRAWINGS

Title Sheet	1
Estimated Quantities & General Notes	2
General Plan & Profile	3
Staged Construction Plan	4
Approach Cross Sections	5-11
Superstructure Plan	12-13
Abutment Rehabilitation	14
Reinforcing Steel Schedule	15
Right of Way	16

CHAIN OF PONDS TWP FRANKLIN COUNTY DEAD RIVER BRIDGE OVER NORTH BRANCH DEAD RIVER ROUTE 27 PROJECT NO. STP-2171(500) PROJECT LENGTH 0.038 mi. BRIDGE NO. 3135

UTILITIES

Somerset Telephone
 Central Maine Power

MAINTENANCE OF TRAFFIC

Maintain one 11'-0" wide lane of alternating one - way traffic using traffic signals.

<u>PROJECT LOCATION</u>	0.03 of a Mile North of Alder Stream TWP. Longitude 70°-36'-40.4" - Latitude 45°-18'-24.7"
<u>PROGRAM AREA</u>	Highway Bridges - Traditional
<u>OUTLINE OF WORK</u>	Bridge Rehabilitation

STATE OF MAINE DEPARTMENT OF TRANSPORTATION	APPROVED	DATE
COMMISSIONER: <i>[Signature]</i>	7/12/18	7/12/18
CHIEF ENGINEER: <i>[Signature]</i>		7-11-18

STATE OF MAINE DEPARTMENT OF TRANSPORTATION LICENSED PROFESSIONAL ENGINEER	SIGNATURE	P.E. NUMBER	DATE
<i>[Signature]</i>	14372	7 June 2018	

PROJECT INFORMATION	
PROGRAM	Bridge
PROJECT MANAGER	M. Wight
DESIGNER	J. Hasbrouck
CONSULTANT	
PROJECT RESIDENT	
CONTRACTOR	
PROJECT COMPLETION DATE	

STP-2171(500) WIN 21715.00

CHAIN OF PONDS TWP
DEAD RIVER BRIDGE

TITLE SHEET

SHEET NUMBER

1

OF 16

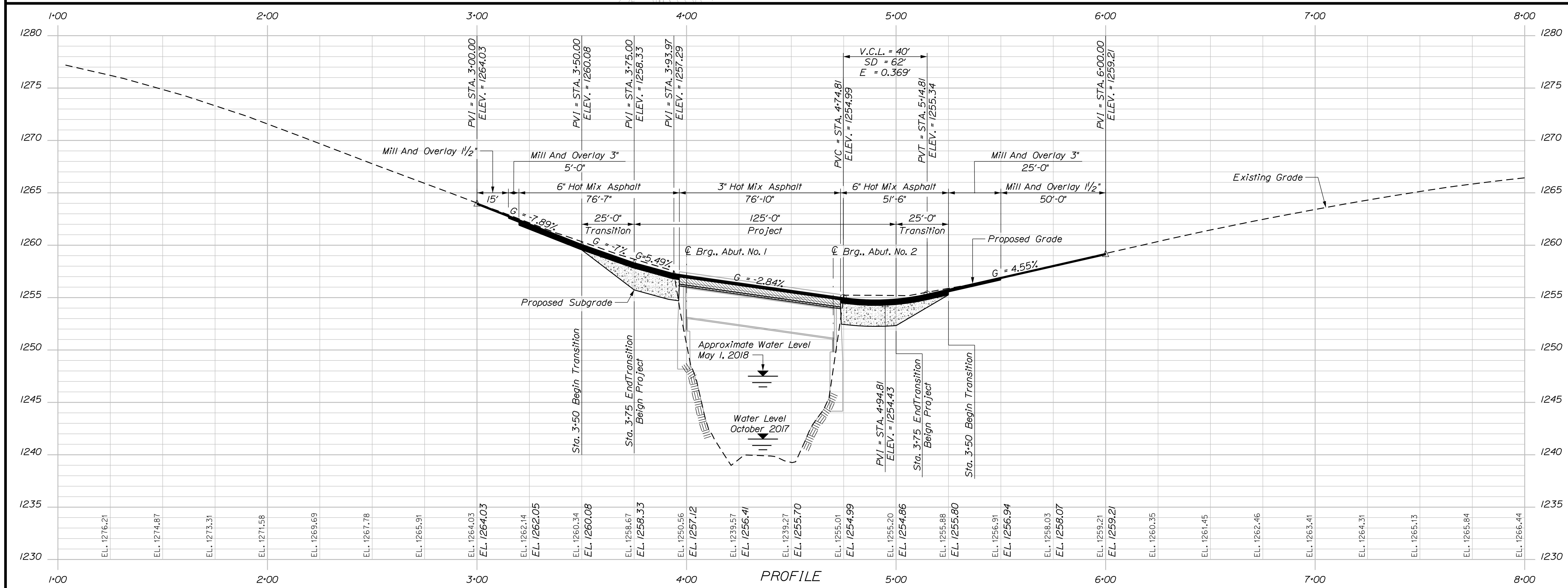
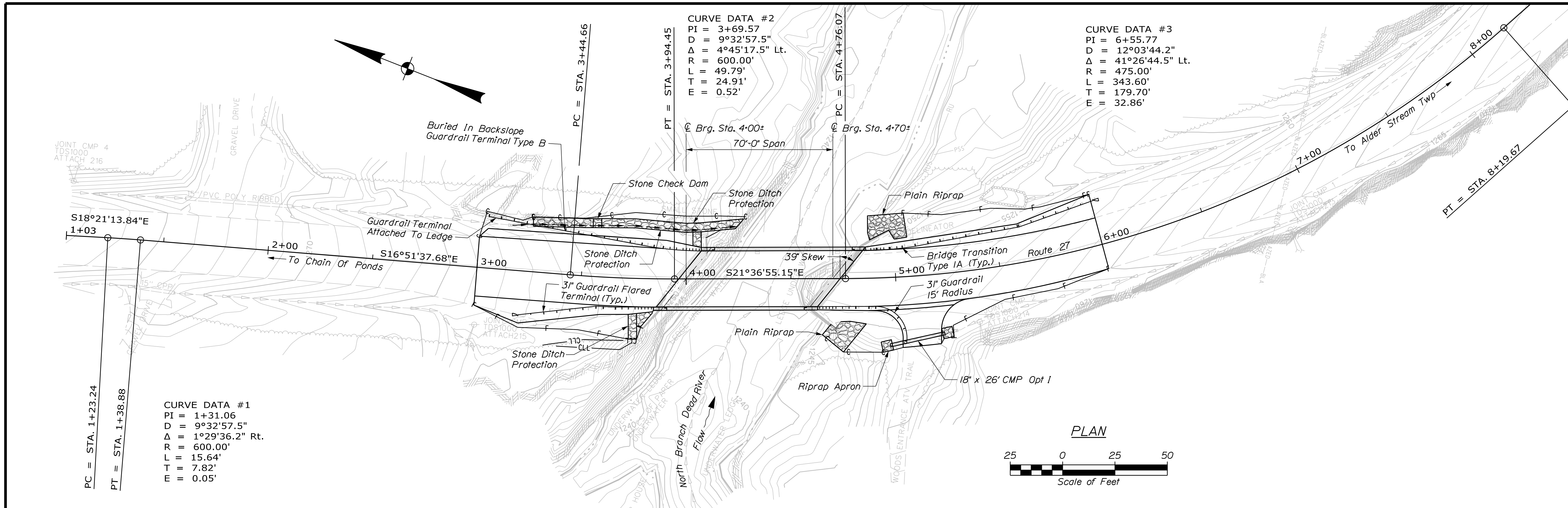
Username: Joshua.P.Hasbrouck Date:6/7/2018
 Division: BRIDGE
 Filename:\00\BRIDGE\WSTA\001_Title.dgn

ESTIMATED QUANTITIES			
ITEM NO.	DESCRIPTION	QUANTITY	UNIT
202.10	REMOVING EXISTING SUPERSTRUCTURE (PROPERTY OF CONTRACTOR) (104 CY)	1	LS
202.202	REMOVING PAVEMENT SURFACE	350	SY
203.20	COMMON EXCAVATION	360	CY
304.10	AGGREGATE SUBBASE COURSE - GRAVEL	220	CY
403.2081	12.5 MM POLYMER MODIFIED HOT MIX ASPHALT	91	T
403.213	HOT MIX ASPHALT 12.5 MM BASE	85	T
403.2131	12.5 MM POLYMER MODIFIED HMA BASE	70	T
409.15	BITUMINOUS TACK COAT - APPLIED	69	G
502.26	STRUCTURAL CONCRETE ROADWAY AND SIDEWALK SLABS ON STEEL BRIDGES (65 CY)	1	LS
502.49	STRUCTURAL CONCRETE CURBS AND SIDEWALKS (9 CY)	1	LS
503.12	REINFORCING STEEL, FABRICATED AND DELIVERED	23800	LB
503.13	REINFORCING STEEL, PLACING	23800	LB
503.17	MECHANICAL / WELDED SPLICE	348	EA
505.08	SHEAR CONNECTORS (810 EA)	1	LS
507.0821	STEEL BRIDGE RAILING, 3 BAR (136 LF)	1	LS
508.14	HIGH PERFORMANCE WATERPROOFING MEMBRANE (245 SY)	1	LS
514.06	CURING BOX FOR CONCRETE CYLINDERS	1	EA
515.21	PROTECTIVE COATING FOR CONCRETE SURFACES (75 SY)	1	LS
518.50	REPAIR OF UPWARD FACING SURFACES - TO REINFORCING STEEL < 8 IN.	57	SF
518.60	REPAIR OF VERTICAL SURFACES < 8 IN.	27	SF
518.61	REPAIR OF VERTICAL SURFACES >= 8 IN.	3	CY
523.5307	REPAIR FIXED BEARING	1	EA
523.5308	REPAIR EXPANSION BEARING	1	EA
526.305	TEMPORARY CONCRETE BARRIER, BRACED TYPE I (150 LF)	1	LS
526.34	PERMANENT CONCRETE TRANSITION BARRIER	4	EA
527.34	WORK ZONE CRASH CUSHIONS	2	UN
603.17	18 INCH CULVERT PIPE OPTION I	26	LF
606.1301	31" W-BM GR, MID-WAY SPLICE-SGL FACED	159,375	LF
606.1303	31" W-BM GR, MID-WAY SPLICE-15' RAD AND LESS	25	LF
606.1305	31" W-BM GR, MID-WAY SPLICE FLARED TERMINAL	2	EA
606.1307	BRIDGE TRANSITION - TYPE IA	4	EA
606.1308	BURIED-IN-SLOPE GUARDRAIL END, MID-WAY SPLICE	1	EA
606.265	TERMINAL END - SINGLE RAIL - GALVANIZED STEEL	1	EA
606.353	REFLECTORIZED FLEXIBLE GUARDRAIL MARKER	8	EA
610.08	PLAIN RIPRAP	50	CY
610.18	STONE DITCH PROTECTION	31	CY
613.319	EROSION CONTROL BLANKET	45	SY
618.14	SEEDING METHOD NUMBER 2	3	UN
619.14	EROSION CONTROL MIX	35	CY
620.58	EROSION CONTROL GEOTEXTILE	110	SY
627.733	4" WHITE OR YELLOW PAINTED PAVEMENT MARKING LINE	900	LF
627.77	REMOVING PAVEMENT MARKINGS	228	SF
627.78	TEMPORARY 4 INCH PAINTED PAVEMENT MARKING LINE, WHITE OR YEL LOW	1228	LF
629.05	HAND LABOR, STRAIGHT TIME	20	HR
631.10	AIR COMPRESSOR (INCLUDING OPERATOR)	5	HR
631.11	AIR TOOL (INCLUDING OPERATOR)	5	HR
631.12	ALL PURPOSE EXCAVATOR (INCLUDING OPERATOR)	10	HR
631.172	TRUCK - LARGE (INCLUDING OPERATOR)	10	HR
639.19	FIELD OFFICE TYPE B	1	EA
643.72	TEMPORARY TRAFFIC SIGNAL	1	LS
652.312	TYPE III BARRICADE	4	EA
652.33	DRUM	50	EA
652.34	CONE	75	EA
652.35	CONSTRUCTION SIGNS	600	SF
652.361	MAINTENANCE OF TRAFFIC CONTROL DEVICES	1	LS
652.38	FLAGGER	300	HR
652.41	PORTABLE CHANGEABLE MESSAGE SIGN	2	EA
656.75	TEMPORARY SOIL EROSION AND WATER POLLUTION CONTROL	1	LS
659.10	MOBILIZATION	1	LS

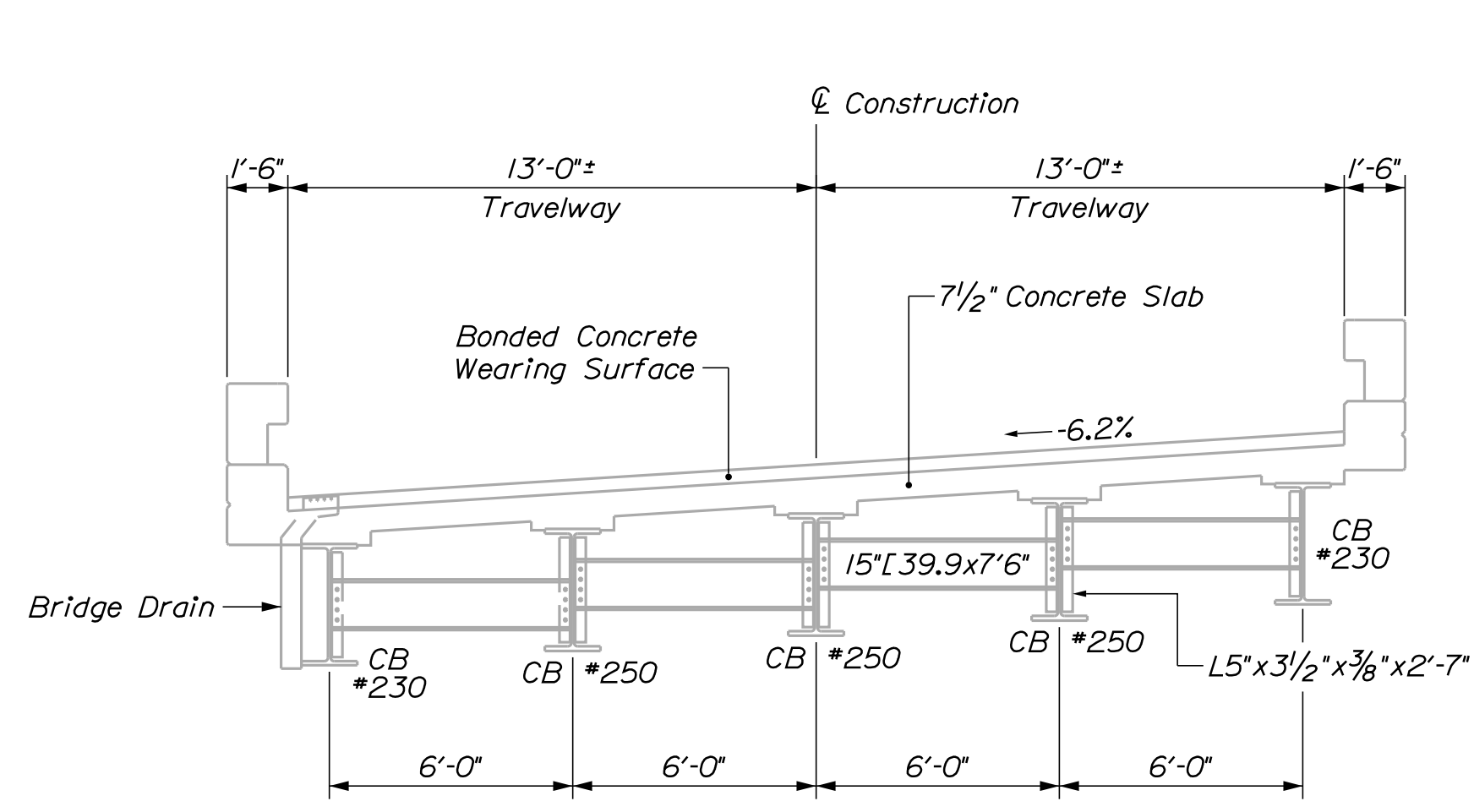
GENERAL CONSTRUCTION NOTES

- For easements, construction limits and right of way lines, refer to Right of Way Map.
- The clearing limits as shown on the plans are approximate. The exact limits will be established in the field by the Resident. Payment for clearing will be considered incidental to Contract items.
- Place Erosion Control Mix 4 inches deep on all new or reconstructed sideslopes or as directed by the Resident.
- Place a 24-in. wide strip of Temporary Erosion Control Blanket on the sideslopes along the top of the riprap and behind the wingwalls.
- Guardrail posts as shown in the Special Provision shall be a length of 8 feet.
- A MASH compliant guardrail end treatment shall be installed concurrently with the placement of each section of beam guardrail.
- Extended-use Erosion Control Blanket, seeded gutters, riprap downspouts, and other gutters lined with Stone Ditch Protection shall be constructed after paving and shoulder work is completed, where it is apparent that runoff will cause continual erosion. Payment will be made under the appropriate Contract items.
- The Stone Check Dam at approximately STA. 3+60 LT. shall be constructed according to Standard Detail 802(11) and paid for under Pay Item 610.18 Stone Ditch Protection.
- Protective Coating for Concrete Surfaces shall be applied to the following areas:
 All exposed surfaces of concrete curbs and sidewalks, Fascias down to the drip notch, All exposed surfaces of Concrete Transition Barriers, Top of abutment backwalls and to one foot below the top of backwalls on the back side.
- Project information referred to below may be accessed at the following MaineDOT web address: <http://www.maine.gov/mdot/contractors/>
- The existing bridge plans may be accessed at the MaineDOT web address. The plans are reproductions of the original drawings as prepared for the construction of the bridge. It is very unlikely that the plans will show any construction field changes or any alterations which may have been made to the bridge during its life span.
- Quantities included for pay items measured and paid for by Lump Sum are estimated quantities and are provided by MaineDOT for informational purposes only. Lump Sum pay items will be paid for at the Contract Bid amount, with no addition or reduction in payment to the Contractor if the actual final quantities are different from the MaineDOT provided estimated quantities, except as follows:
 - If a Lump Sum pay item is eliminated, the requirements of Standard Specifications Section 109.2, Elimination of Items, will take precedence.
 - If other Contract Documents specifically allow a change in payment for a Lump Sum pay item, those requirements will be followed.
 - If a design change results in changes to estimated quantities for Lump Sum pay items, price adjustments will be made in accordance with Standard Specifications Section 109.7, Equitable Adjustments to Compensation.
- A turbidity curtain or cofferdam will be required for any work in flowing water. All costs for cofferdams or turbidity curtains, including pumping, maintenance, related temporary soil erosion and water pollution controls and removal, will not be paid for directly, but will be considered incidental to related Contract items.
- The steel portions of the existing bridge are coated with a lead-based paint system. The Contractor is responsible for the containment, proper management and disposal of all lead-contaminated hazardous waste generated by the proposed work activities. The Contractor is responsible for implementing appropriate OSHA mandated personal protection standards related to this process. Once the proposed work is completed, the Contractor is solely responsible for the care, custody and control of the components of the existing bridge and any hazardous waste generated as a result of the storage, recycling or disposal of the bridge components, including lead-coated steel. The Contractor shall recycle or reuse the steel in accordance with the Maine Department of Environmental Protection's "Maine Hazardous Waste Management Regulations," Chapter 850. A copy of this regulation is available at MaineDOT's offices on Child Street in Augusta.

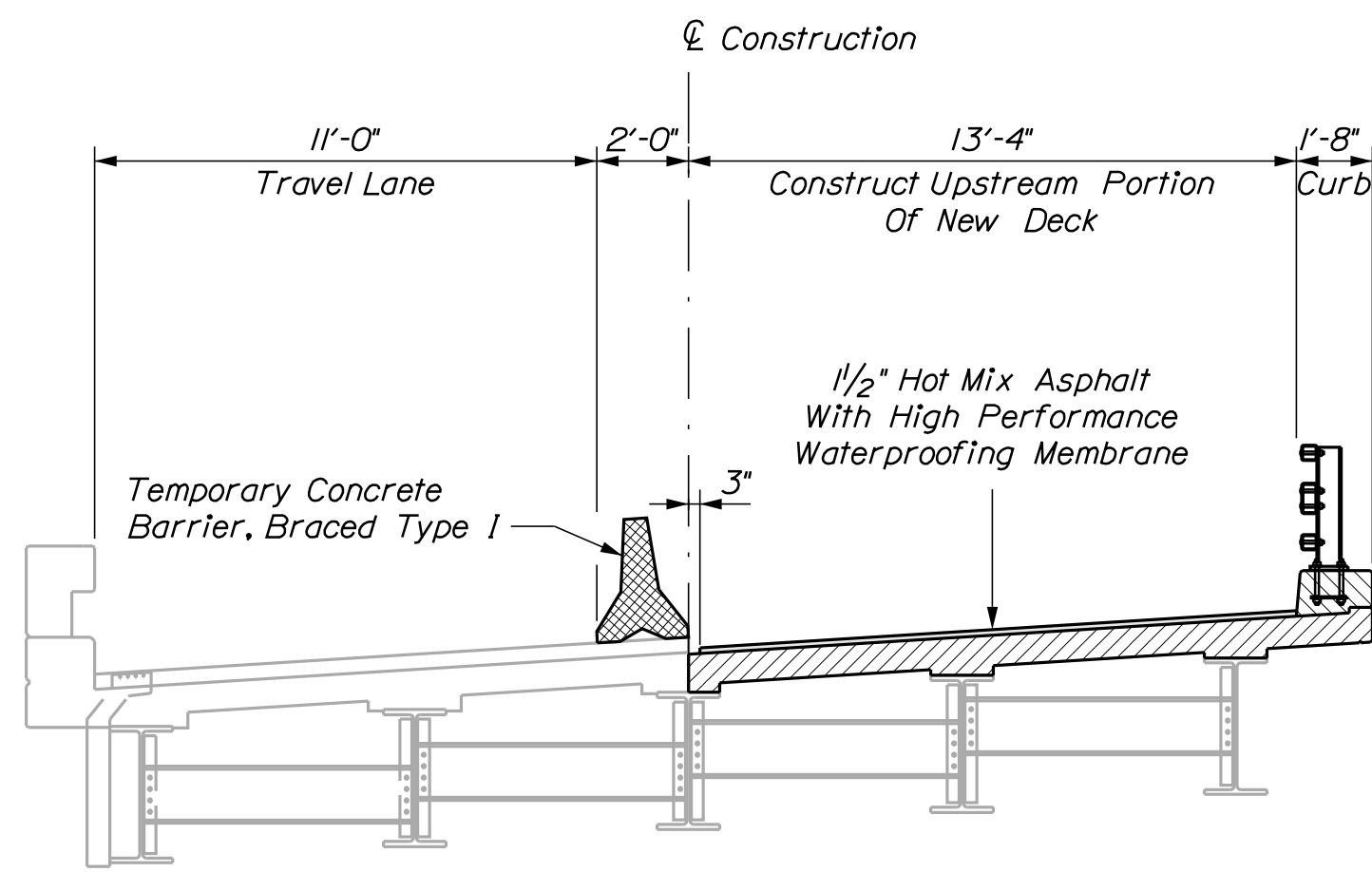
STATE OF MAINE		DEPARTMENT OF TRANSPORTATION	
DEAD RIVER BRIDGE		NORTH BRANCH DEAD RIVER	
CHAIN OF PONDS		FRANKLIN COUNTY	
ESTIMATED QUANTITIES		GENERAL NOTES	
021715.00		WIN	
21715.00		BRIDGE NO. 3135	
BRIDGE PLANS		DATE	
PROJ. MANAGER	M. Wight	DATE	June 2018
DESIGN DETAILED	J. Hasbrouck	DATE	June 2018
CHECKED/REVIEWED	M. Gray	DATE	June 2018
DESIGNS DETAILED		SIGNATURE	
REVISIONS 1		P.E. NUMBER	
REVISIONS 2		DATE	
REVISIONS 3			
REVISIONS 4			
FIELD CHANGES			
SHEET NUMBER			
2			
OF 16			



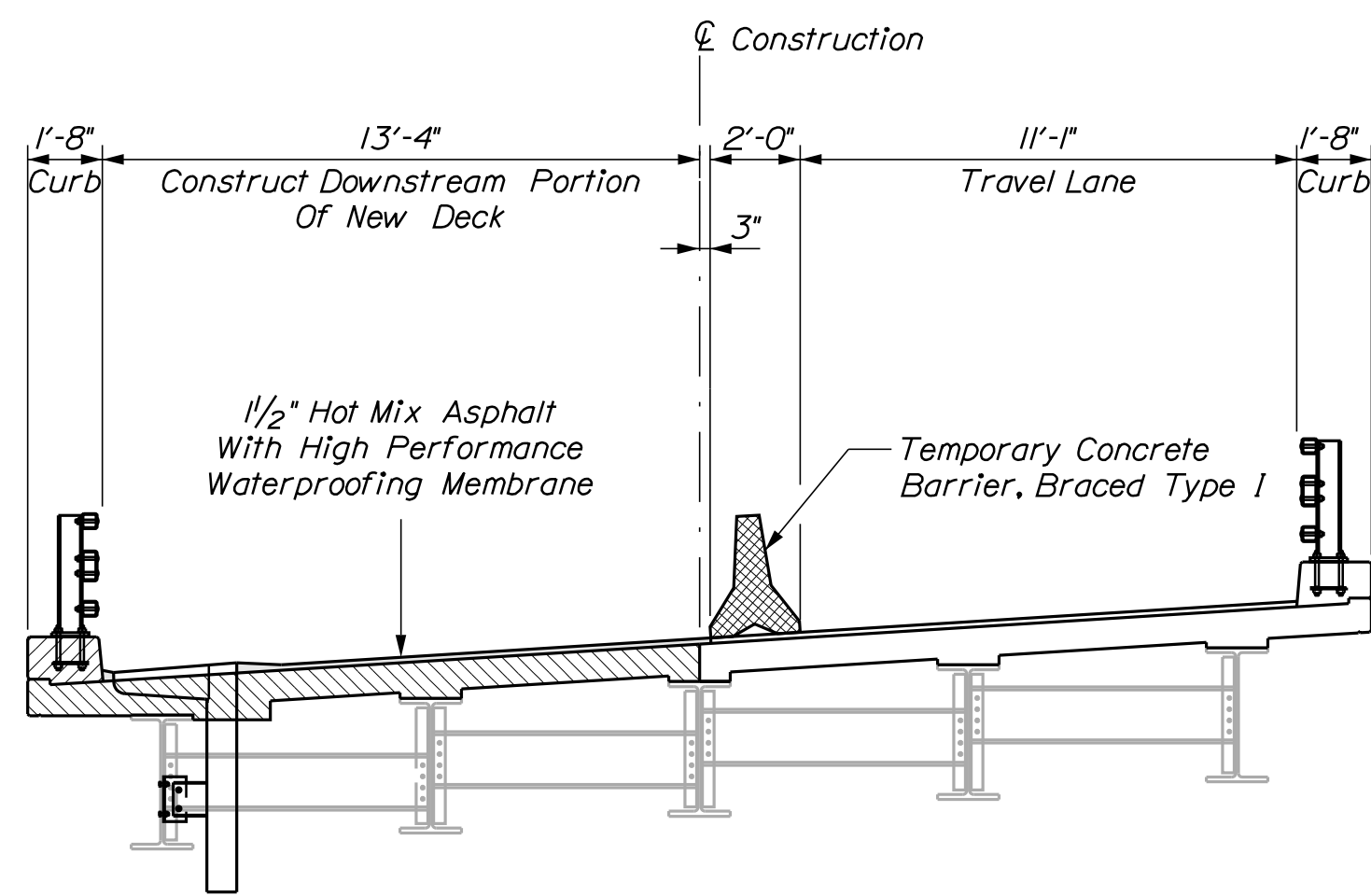
STATE OF MAINE		DEPARTMENT OF TRANSPORTATION	
021715.00		WIN	
BRIDGE NO. 3135		BRIDGE PLANS	
21715.00		DATE	
SIGNATURE		P.E. NUMBER	
M.P.P.		DATE	
DESIGN DETAILED		REVISIONS 1	
CHECKED/REVIEWED		REVISIONS 2	
DESIGN DETAILED		REVISIONS 3	
REVISIONS 1		REVISIONS 4	
REVISIONS 2		FIELD CHANGES	
REVISIONS 3			
REVISIONS 4			
FIELD CHANGES			
DEAD RIVER BRIDGE			
NORTH BRANCH DEAD RIVER			
CHAIN OF PONDS FRANKLIN COUNTY			
GENERAL PLANS & PROFILE			
SHEET NUMBER			
3			
OF 16			



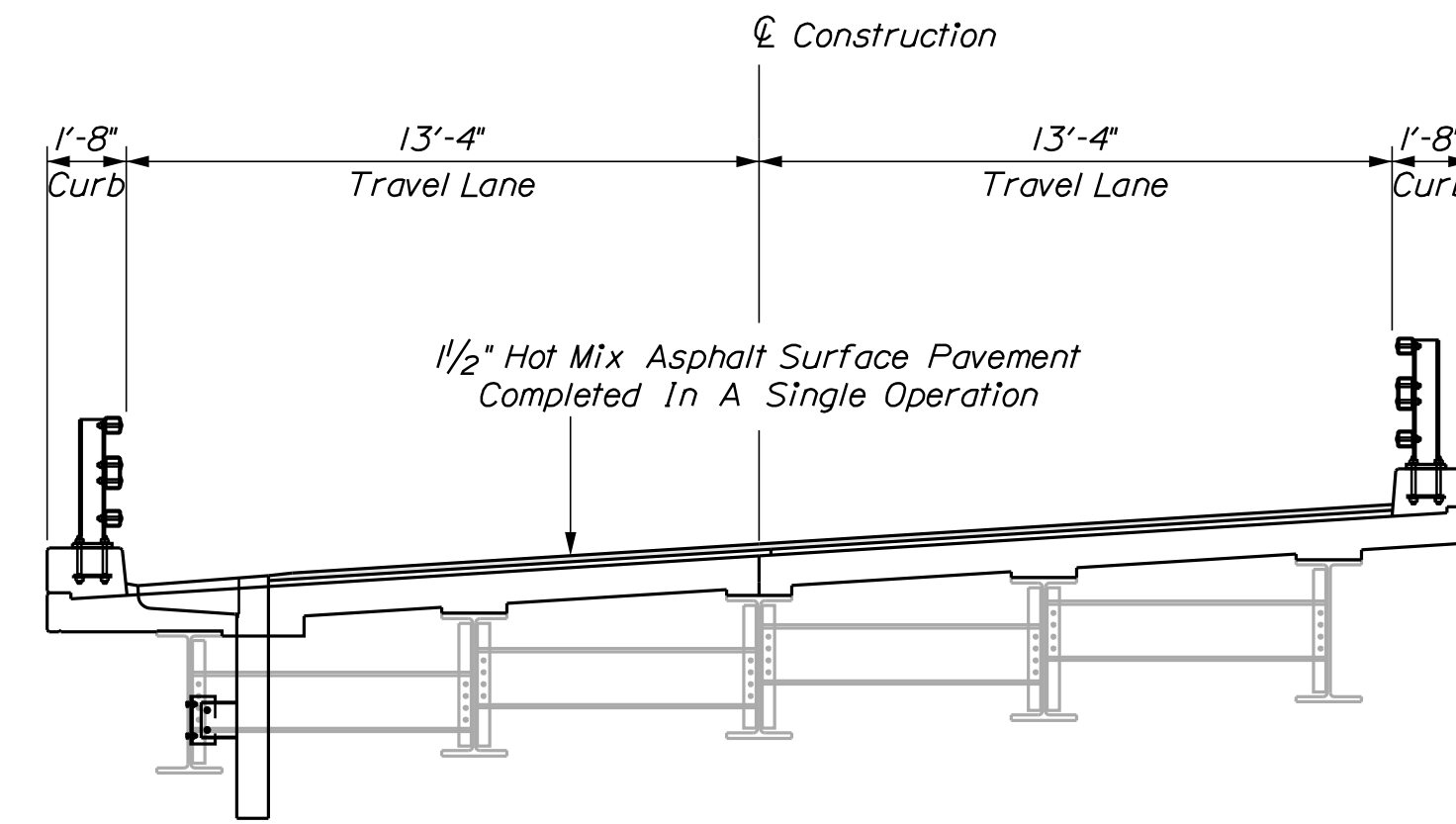
EXISTING BRIDGE SECTION



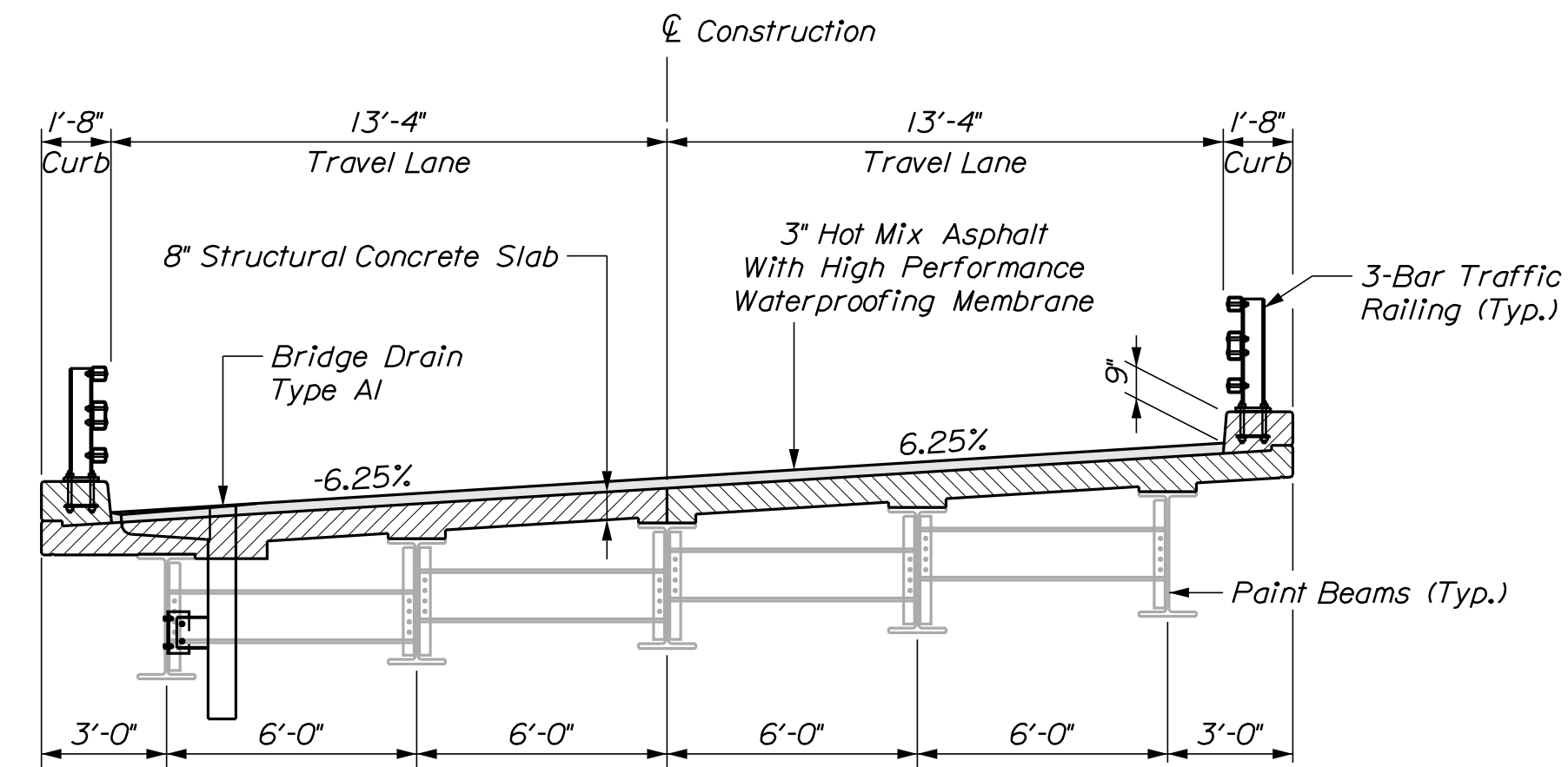
STAGE I



STAGE II



STAGE III



PROPOSED BRIDGE SECTION

STATE OF MAINE
DEPARTMENT OF TRANSPORTATION
021715.00
WIN
21715.00
BRIDGE NO. 3135
BRIDGE PLANS

PROJ. MANAGER	M. Wight	BY	DATE
DESIGN DETAILED	J. Hasbrouck	M.R.P.	June 2018
CHECKED/REVIEWED	M. Gray		June 2018
DESIGN DETAILED			
DESIGN DETAILED			
REVISIONS 1			
REVISIONS 2			
REVISIONS 3			
REVISIONS 4			
FIELD CHANGES			

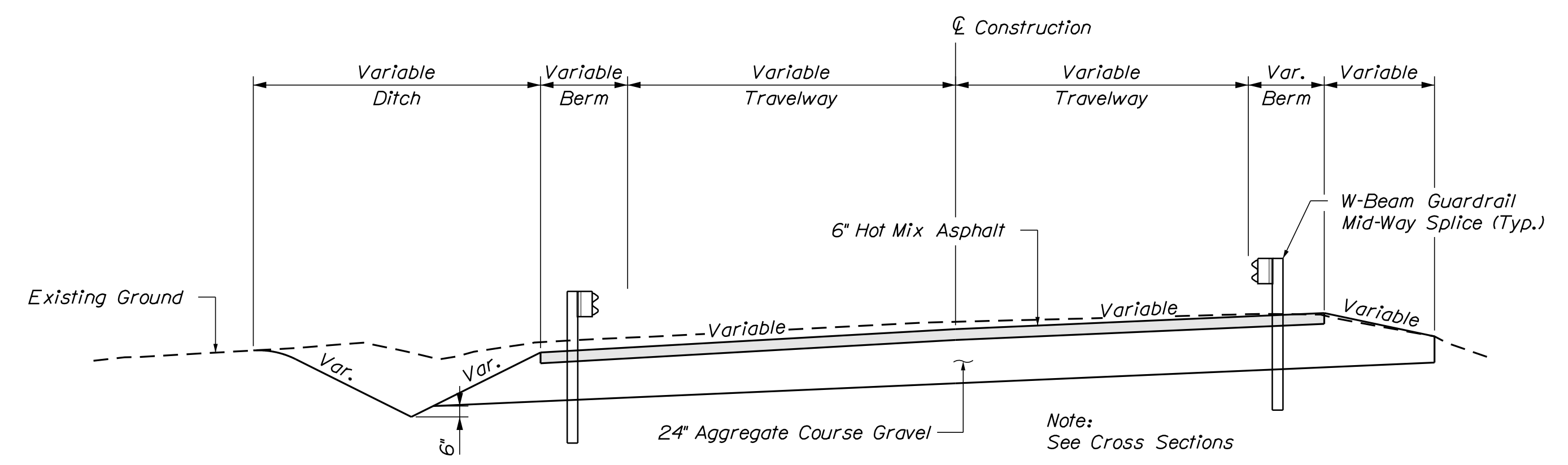
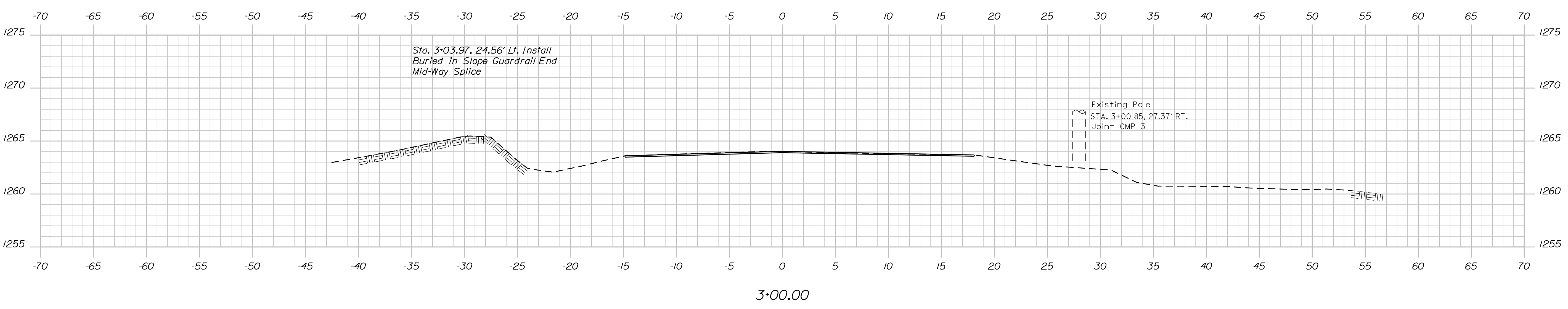
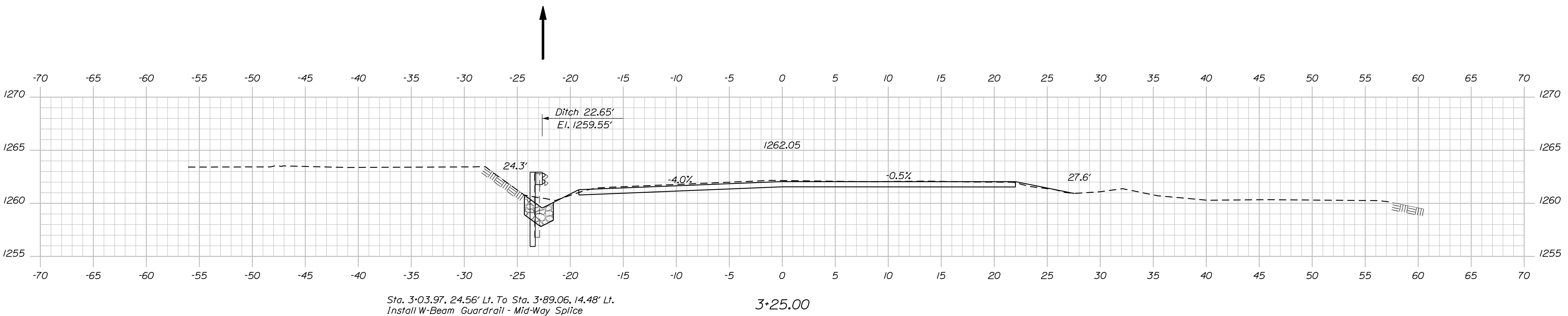
DEAD RIVER BRIDGE
NORTH BRANCH DEAD RIVER
FRANKLIN COUNTY
CHAIN OF PONDS
STAGED CONSTRUCTION PLANS

SHEET NUMBER

4

OF 16

Filename: ... \005_XSECT_3+00_3+25_001.dgn Division: BRIDGE Username: Joshua.P.Hasbrouck Date: 6/26/2018

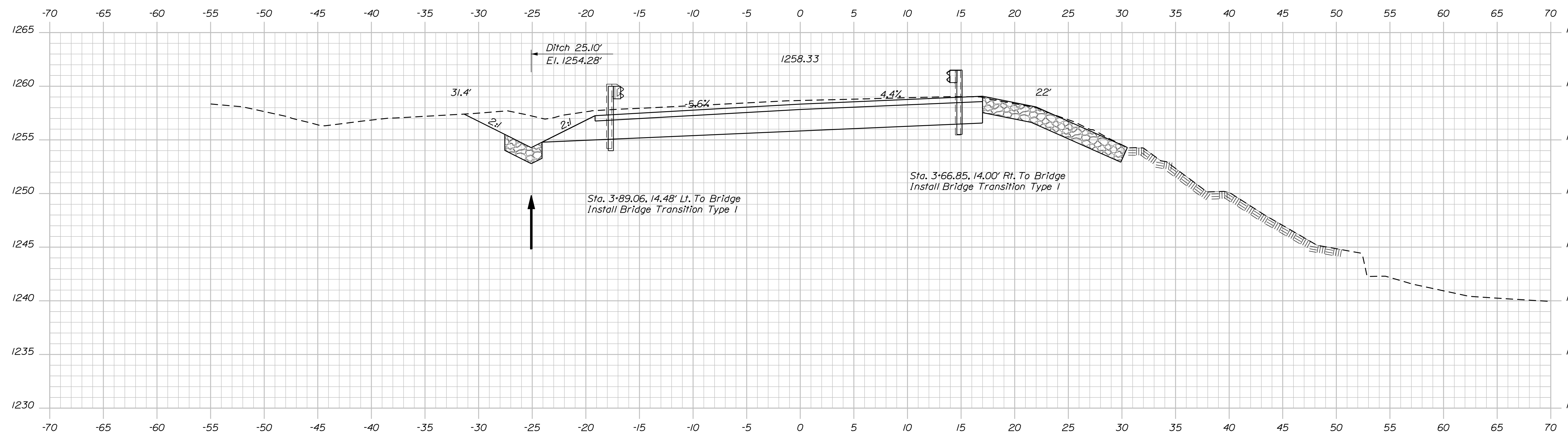


STATE OF MAINE DEPARTMENT OF TRANSPORTATION		021715.00	
		WIN 21715.00	
		BRIDGE NO. 3135	
		BRIDGE PLANS	
DESIGN DETAILED June 2018	CHECKED/REVIEWED J. Hasbrouck M. Gray	SIGNATURE	P.E. NUMBER
DESIGN DETAILED	DESIGN DETAILED		DATE
REVISIONS 1			
REVISIONS 2			
REVISIONS 3			
REVISIONS 4			
FIELD CHANGES			
DEAD RIVER BRIDGE NORTH BRANCH DEAD RIVER CHAIN OF PONDS FRANKLIN COUNTY			
CROSS SECTIONS			
SHEET NUMBER			
5			
OF 16			

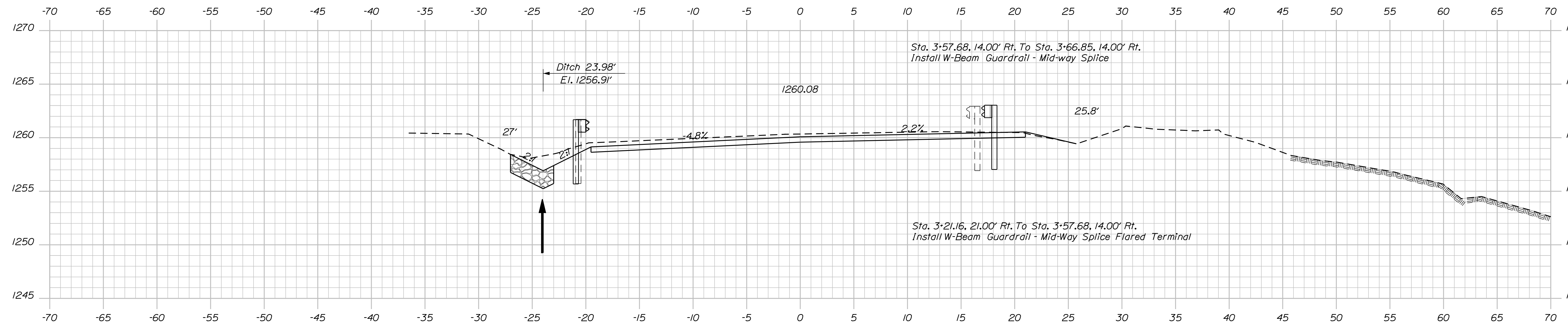
Username: Joshua.P.Hasbrouck Date:6/26/2018

Division: BRIDGE

Filename: ... \006_XSECT_3+50_3+75_002.dgn



3+75.00



3+50.00

STATE OF MAINE
DEPARTMENT OF TRANSPORTATION
021715.00
WIN 21715.00
BRIDGE NO. 3135
BRIDGE PLANS

DESIGNED	DATE
CHECKED	DATE
DESIGNED	DATE
REVISIONS 1	
REVISIONS 2	
REVISIONS 3	
REVISIONS 4	
FIELD CHANGES	

SIGNATURE
P.E. NUMBER
DATE

PROJ. MANAGER
DESIGNED
CHECKED
DESIGNED
REVISIONS 1
REVISIONS 2
REVISIONS 3
REVISIONS 4
FIELD CHANGES

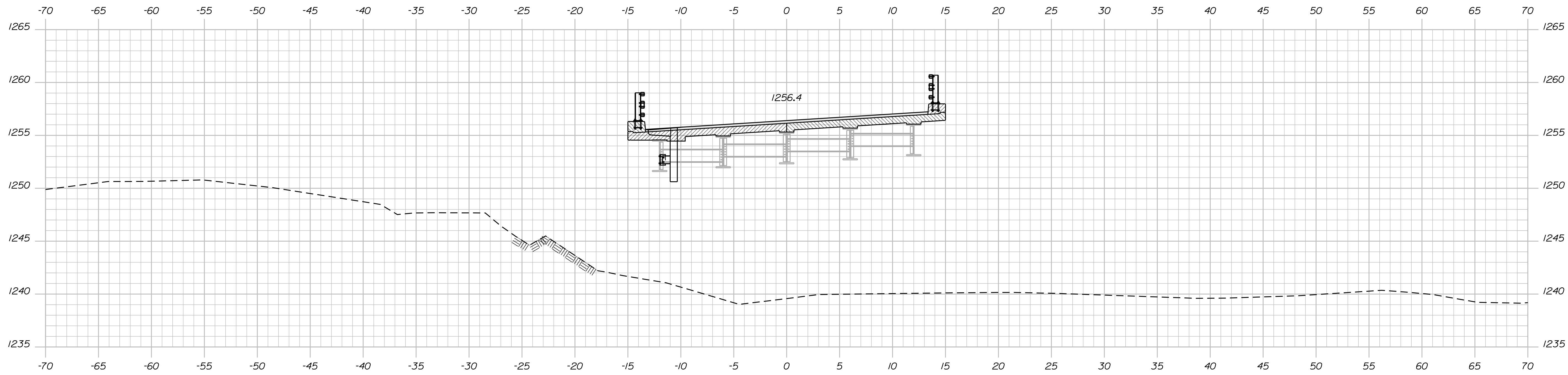
DEAD RIVER BRIDGE
NORTH BRANCH DEAD RIVER
CHAIN OF PONDS
FRANKLIN COUNTY
CROSS SECTIONS

SHEET NUMBER
6
OF 16

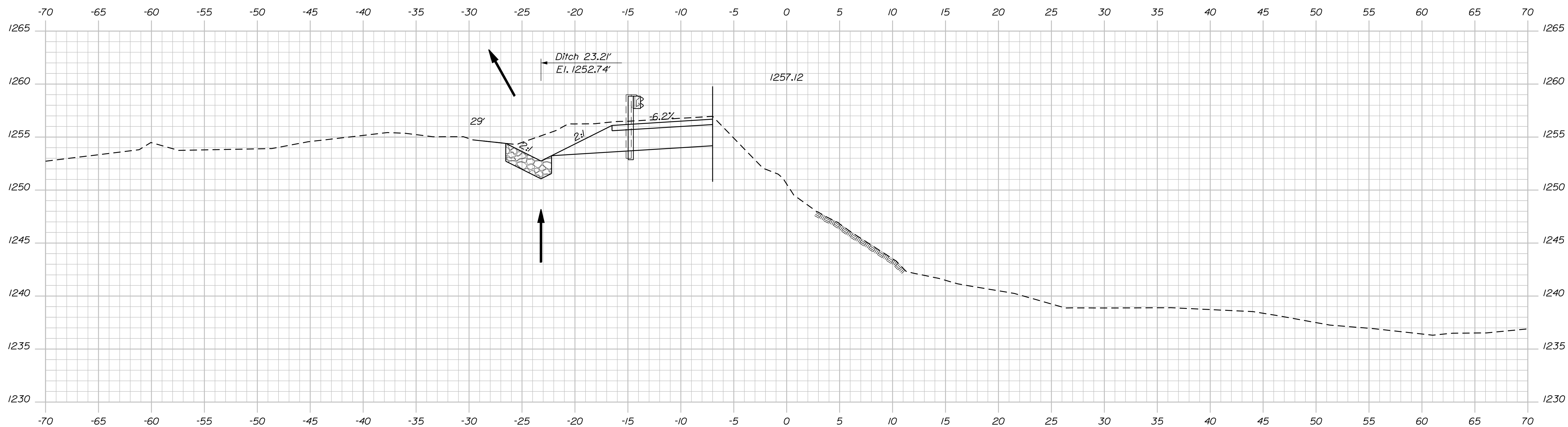
Username: Joshua.P.Hosbrouck Date:6/26/2018

Filename: ... \007_XSECT_4+00_4+25_003.dgn

Division: BRIDGE



4+25.00



4+00.00

STATE OF MAINE
DEPARTMENT OF TRANSPORTATION
021715.00
WIN 21715.00
BRIDGE NO. 3135
BRIDGE PLANS

DESIGN-DETAILED
CHECKED-REVIEWED
DESIGN-DETAILED
REVISIONS 1
REVISIONS 2
REVISIONS 3
REVISIONS 4
FIELD CHANGES

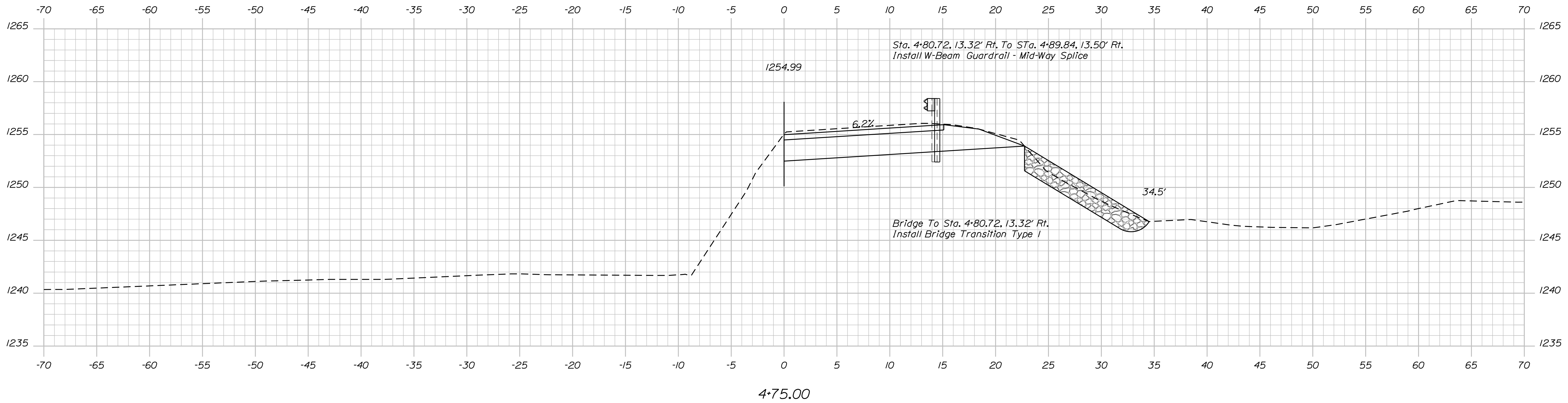
DATE
June 2018
June 2018

SIGNATURE
P.E. NUMBER
DATE

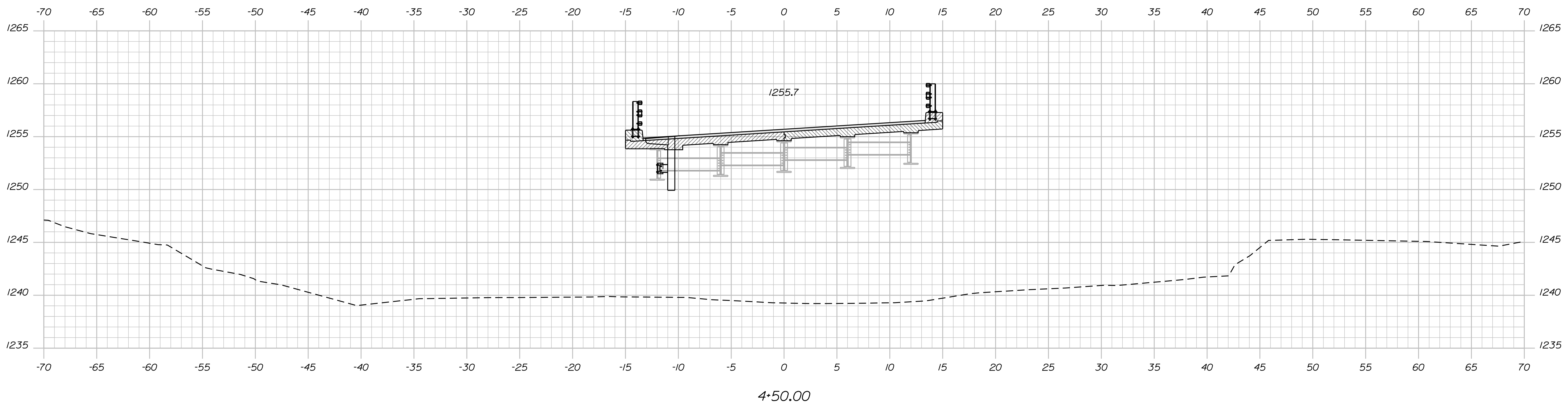
PROJ. MANAGER
M. Wight
BY
M. Wight
M.A.P.
J. Hosbrouck
M. Gray

DEAD RIVER BRIDGE
NORTH BRANCH DEAD RIVER
CHAIN OF PONDS
FRANKLIN COUNTY
CROSS SECTIONS

SHEET NUMBER
2
OF 16



4+75.00



4+50.00

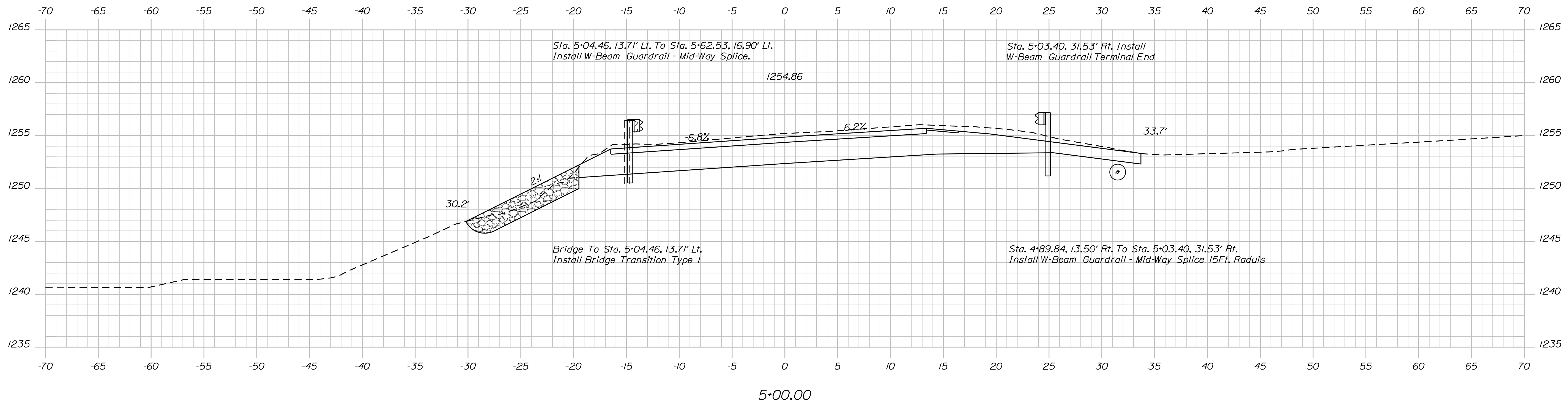
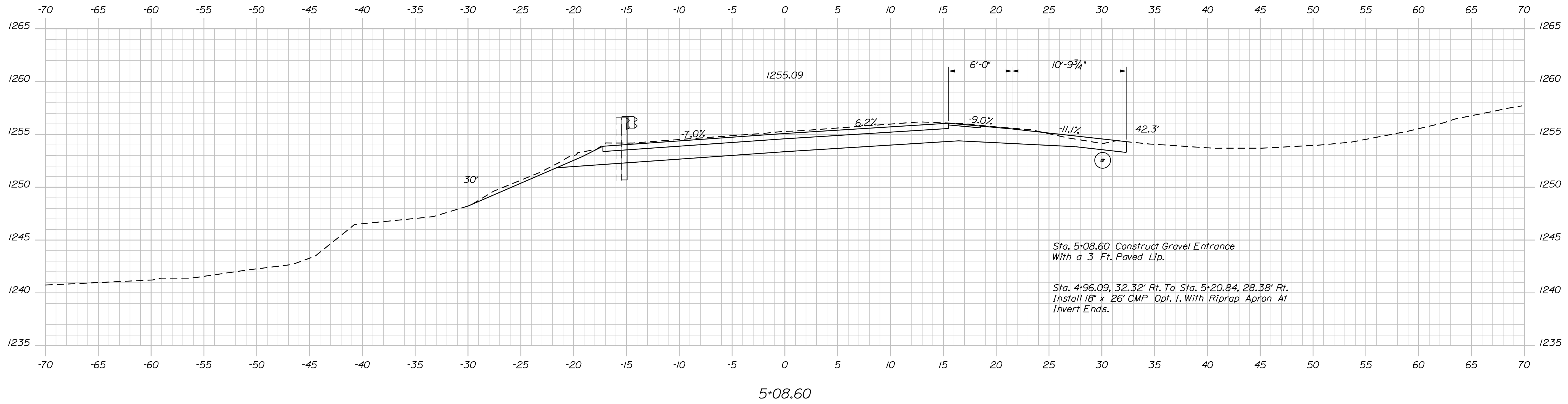
STATE OF MAINE
DEPARTMENT OF TRANSPORTATION
021715.00
WIN 21715.00
BRIDGE NO. 3135
BRIDGE PLANS

SIGNATURE
P.E. NUMBER
DATE

PROJ. MANAGER	BY	DATE
DESIGN DETAILED	M. Wight	June 2018
CHECKED/REVIEWED	J. Hasbrouck	June 2018
DESIGN DETAILED	M. Gray	June 2018
REVISIONS 1		
REVISIONS 2		
REVISIONS 3		
REVISIONS 4		
FIELD CHANGES		

DEAD RIVER BRIDGE
NORTH BRANCH DEAD RIVER
CHAIN OF PONDS
FRANKLIN COUNTY
CROSS SECTIONS

SHEET NUMBER
8
OF 16



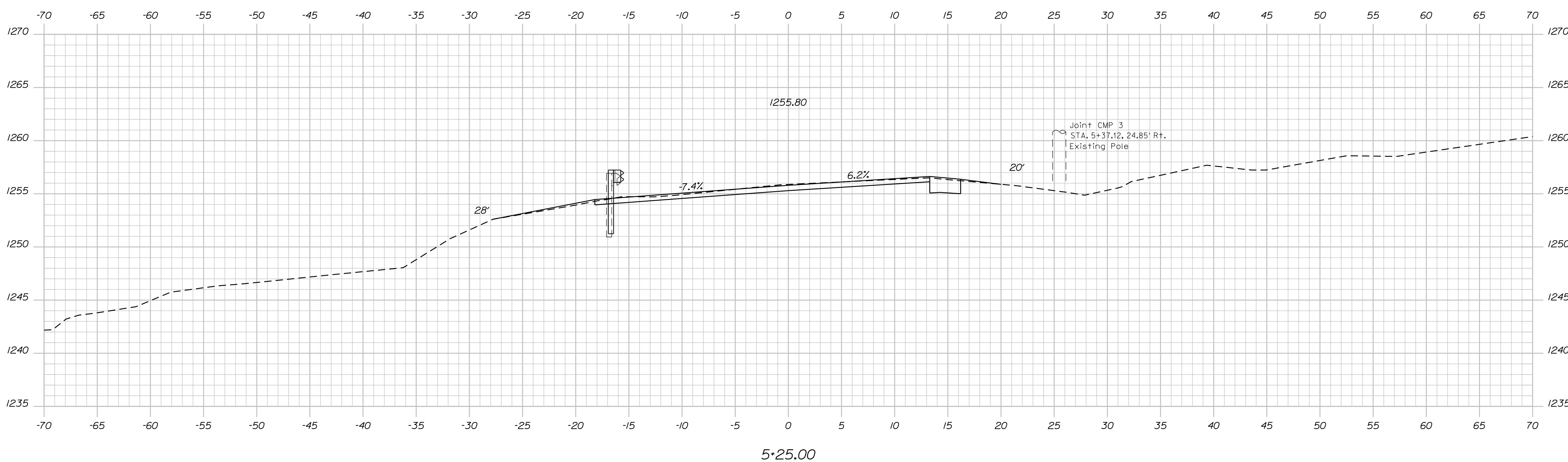
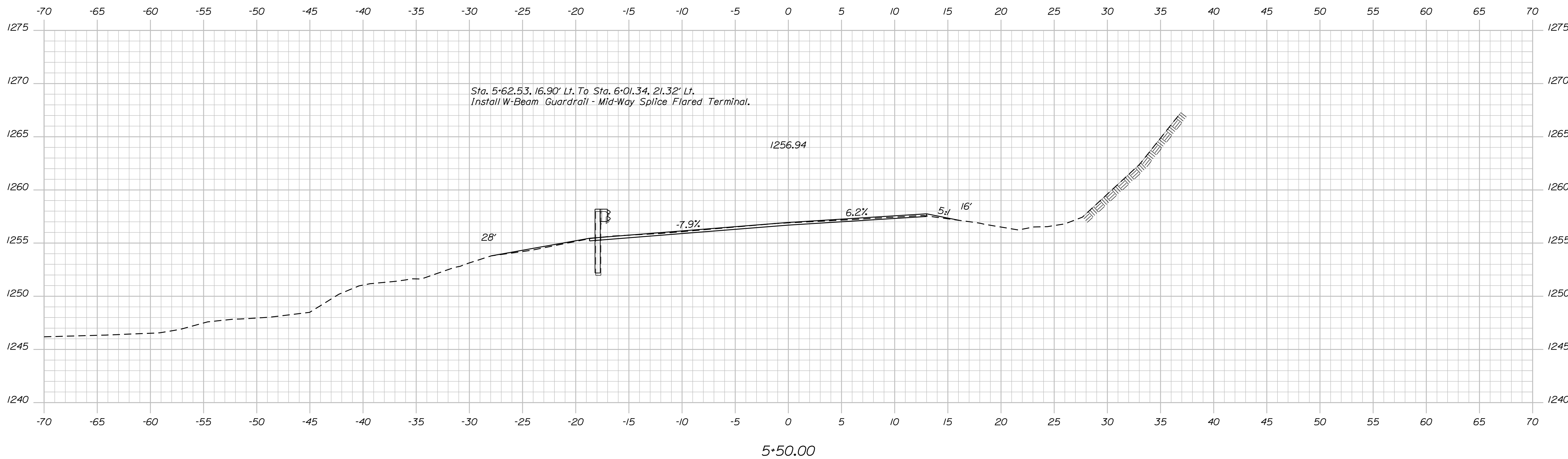
STATE OF MAINE
DEPARTMENT OF TRANSPORTATION
021715.00
WIN 21715.00
BRIDGE NO. 3135
BRIDGE PLANS

SIGNATURE
P.E. NUMBER
DATE

PROJ. MANAGER	BY	DATE
DESIGN DETAILED	M. Wight	June 2018
CHECKED-REVIEWED	J. Hasbrouck	June 2018
DESIGN DETAILED	M. Gray	June 2018
REVISIONS 1		
REVISIONS 2		
REVISIONS 3		
REVISIONS 4		
FIELD CHANGES		

DEAD RIVER BRIDGE
NORTH BRANCH DEAD RIVER
CHAIN OF PONDS
FRANKLIN COUNTY
CROSS SECTIONS

SHEET NUMBER
9
OF 16



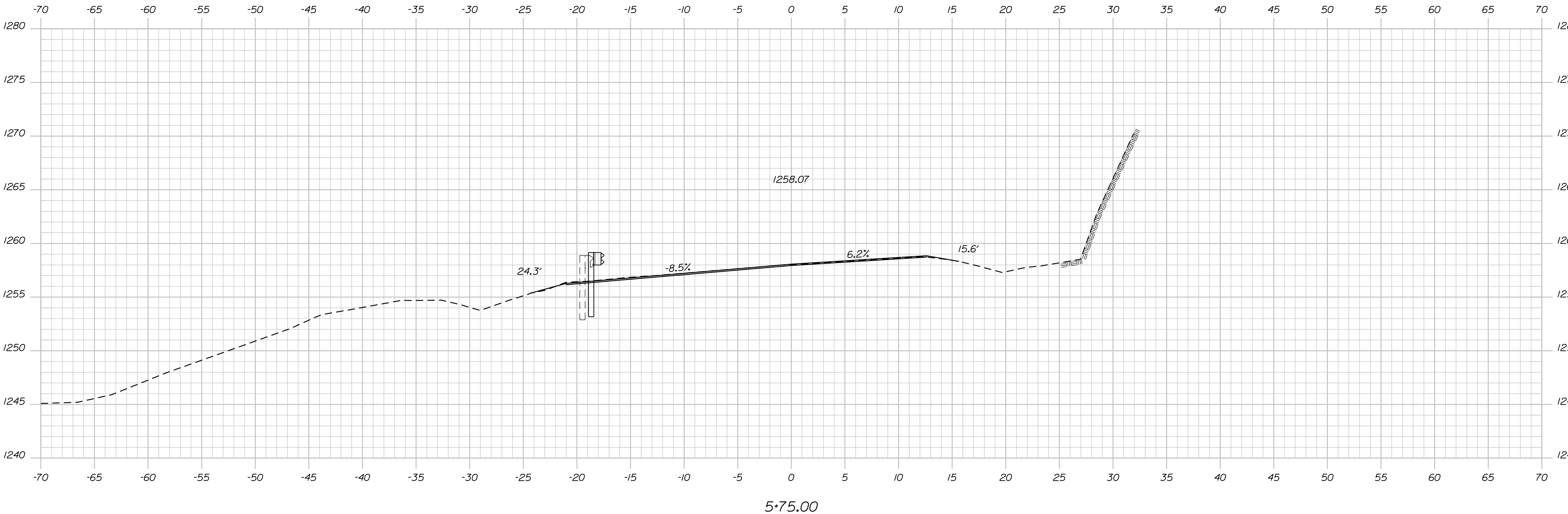
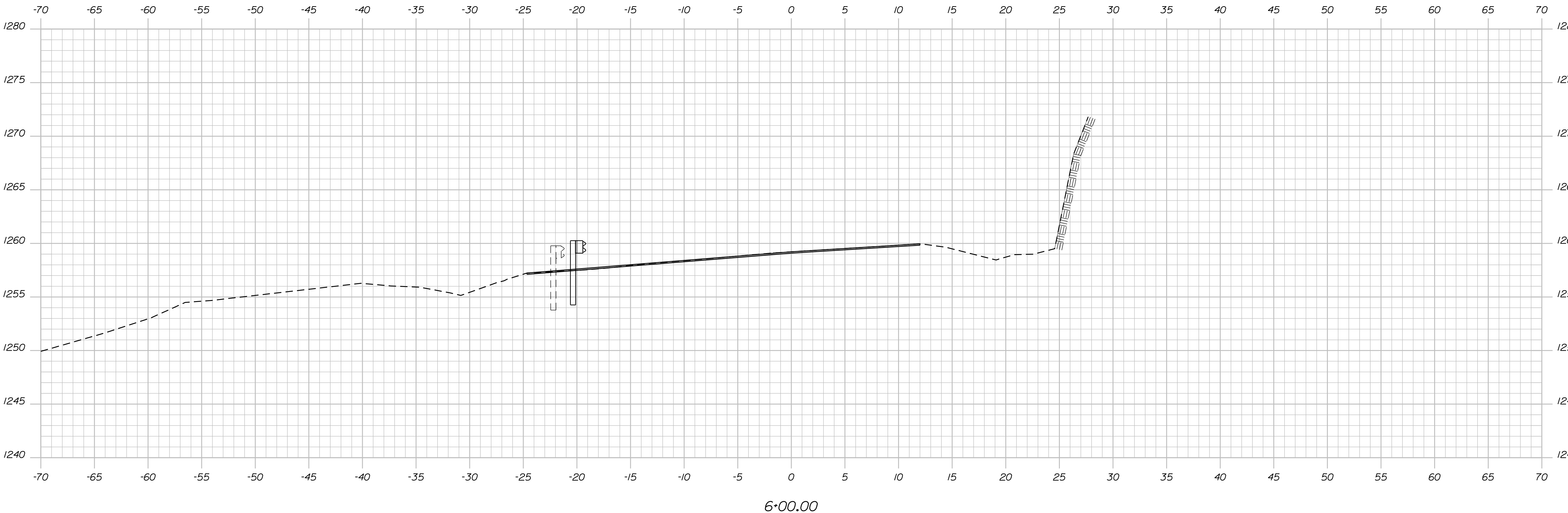
STATE OF MAINE
DEPARTMENT OF TRANSPORTATION
021715.00
BRIDGE NO. 3135
WIN
21715.00
BRIDGE PLANS

DESIGN/DETAILED	DATE
CHECKED/REVIEWED	DATE
DESIGNED/DETAILED	DATE
REVISIONS 1	DATE
REVISIONS 2	DATE
REVISIONS 3	DATE
REVISIONS 4	DATE
FIELD CHANGES	DATE

PROJ. MANAGER	BY
CHECKED/REVIEWED	DATE
DESIGNED/DETAILED	DATE
REVISIONS 1	DATE
REVISIONS 2	DATE
REVISIONS 3	DATE
REVISIONS 4	DATE
FIELD CHANGES	DATE

DEAD RIVER BRIDGE
NORTH BRANCH DEAD RIVER
CHAIN OF PONDS
FRANKLIN COUNTY
CROSS SECTIONS

SHEET NUMBER
10
OF 16



STATE OF MAINE
DEPARTMENT OF TRANSPORTATION
021715.00
BRIDGE NO. 3135
WIN
21715.00
BRIDGE PLANS

DESIGN DETAILED
CHECKED-REVIEWED
DESIGNS DETAILED
REVISIONS 1
REVISIONS 2
REVISIONS 3
REVISIONS 4
FIELD CHANGES

DATE
June 2018
June 2018

BY
M.P.F.
M. Goy

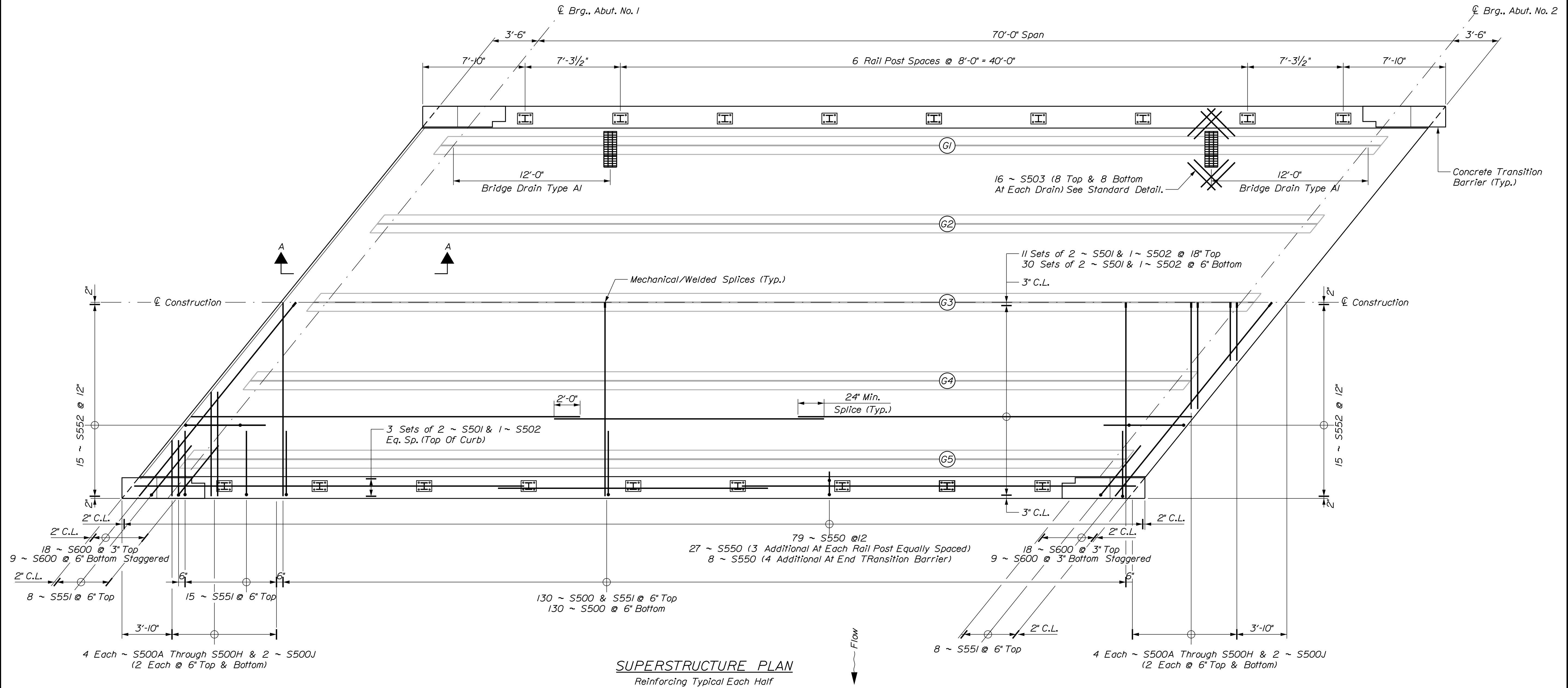
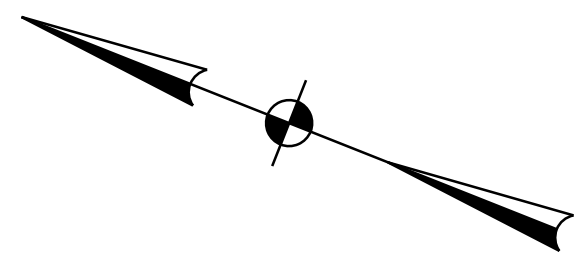
SIGNATURE
P.E. NUMBER
DATE

PROJ. MANAGER
M. Wight

DESIGN DETAILED
CHECKED-REVIEWED
DESIGNS DETAILED
REVISIONS 1
REVISIONS 2
REVISIONS 3
REVISIONS 4
FIELD CHANGES

DEAD RIVER BRIDGE
NORTH BRANCH DEAD RIVER
CHAIN OF PONDS
FRANKLIN COUNTY
CROSS SECTIONS

SHEET NUMBER
11
OF 16

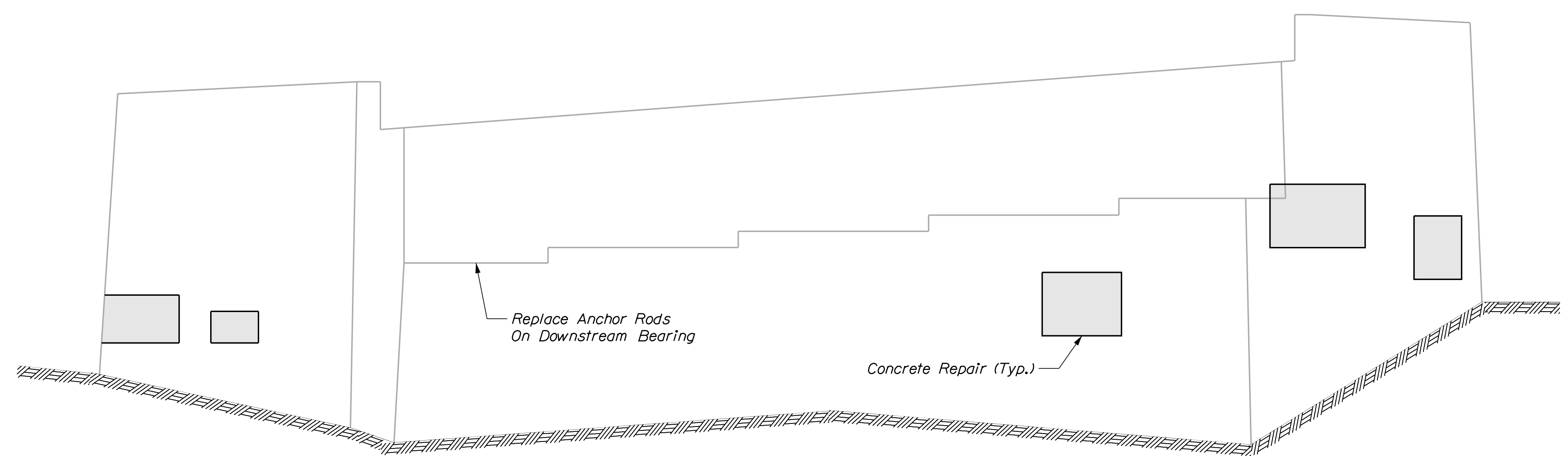


SUPERSTRUCTURE PLAN
Reinforcing Typical Each Half

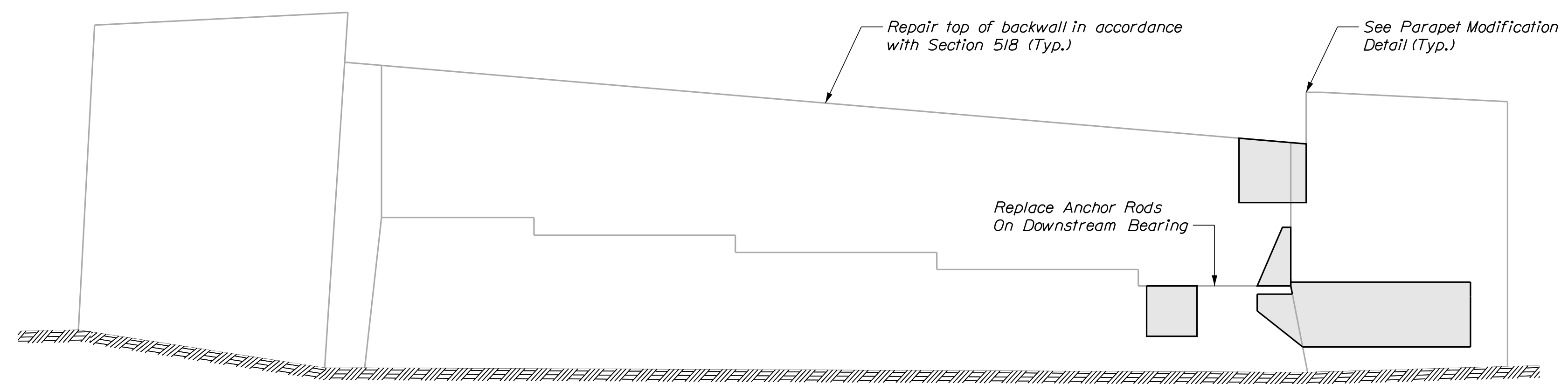
SUPERSTRUCTURE NOTES

1. The theoretical blocking used for design of the structure is 2 inches at the centerline of bearing of the abutments. Refer to Standard Detail 502(O3) for blocking details.
2. Reinforcing steel shall have a minimum concrete cover of 2 inches unless otherwise noted.
3. Adjust reinforcing steel to fit around the bridge drains in a manner approved by the Resident. Do not cut transverse reinforcing bars.
4. Form a one inch V-groove on the fascias at the horizontal joint between the curb and slab.
5. The superstructure slab concrete for each span shall be placed continuously and shall be kept plastic until the entire placement has been made.
6. Provide 3 additional stirrups in the curbs at each Transition Barrier location.
7. The Contractor shall install Transition Barrier vertical closed stirrups, as shown in Standard Details Section 526, prior to the placement of the curb or sidewalk concrete.
8. All debris shall be removed from bearing seat areas. This work will be incidental to the contract.
9. Precast Deck Panels will not be allowed.
10. Payment for the neoprene pad will be incidental to related contract items.

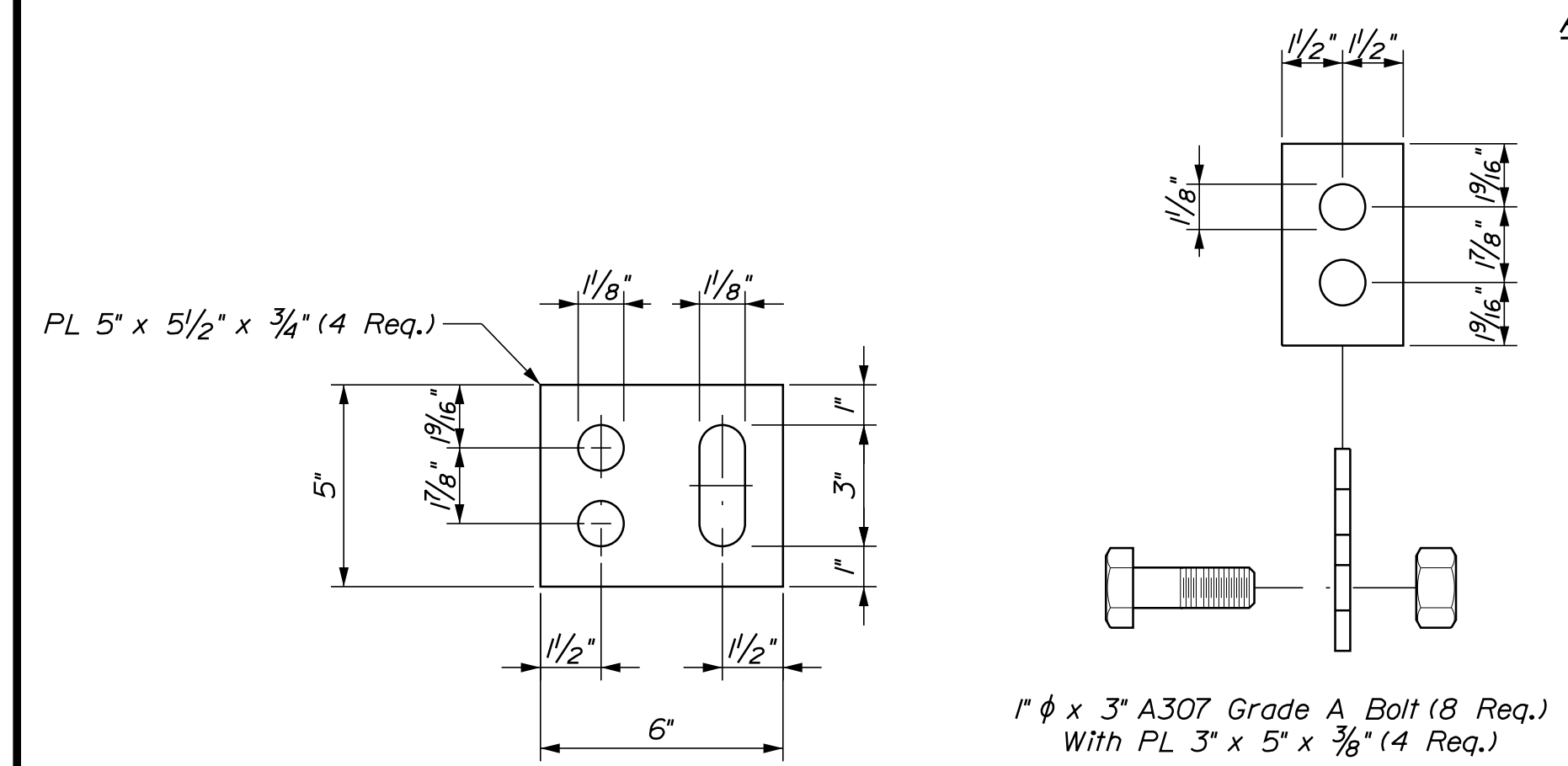
STATE OF MAINE DEPARTMENT OF TRANSPORTATION		021715.00	WIN 21715.00	BRIDGE NO. 3135 BRIDGE PLANS
DEAD RIVER BRIDGE NORTH BRANCH DEAD RIVER CHAIN OF PONDS FRANKLIN COUNTY		SUPERSTRUCTURE PLANS		
PROJ. MANAGER	M. Wight	BY	DATE	SIGNATURE
CHECKED-REVIEWED	J. Hasbrouck	M.R.P.	June 2018	
DESIGN DETAILED	M. Gray		June 2018	
DESIGN DETAILED				P.E. NUMBER
REVISIONS 1				DATE
REVISIONS 2				
REVISIONS 3				
REVISIONS 4				
FIELD CHANGES				
SHEET NUMBER				
12				
OF 16				



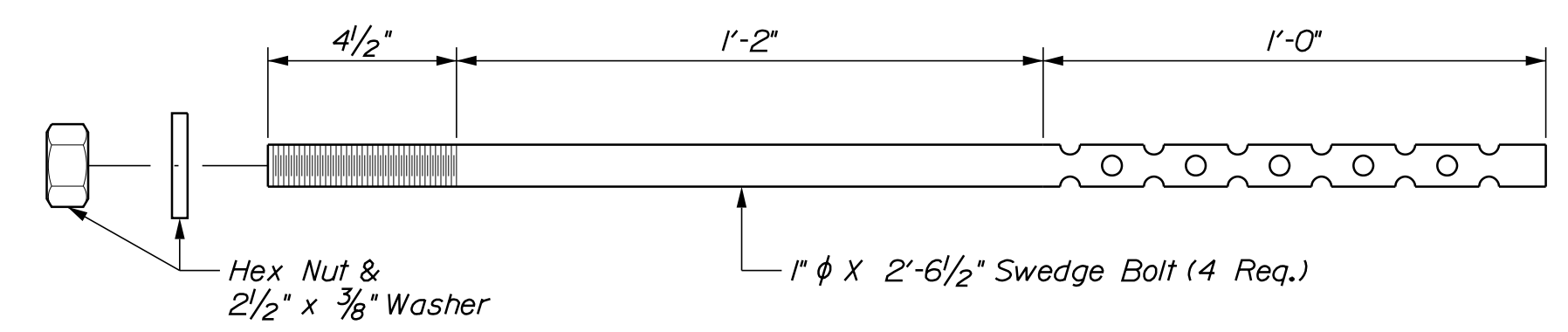
ABUTMENT NO. 2



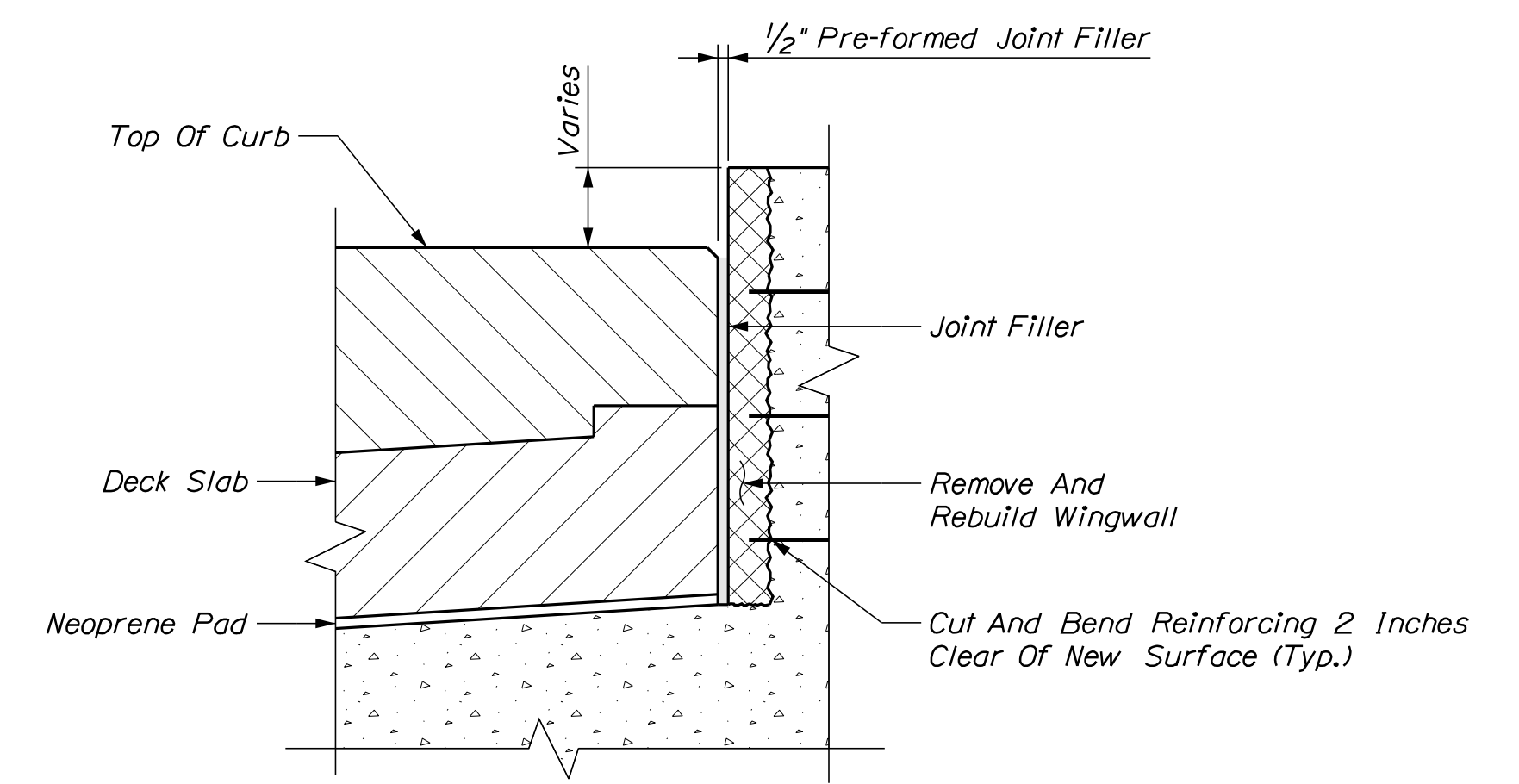
ABUTMENT NO. 1



ANCHOR ROD CONNECTION PLATE



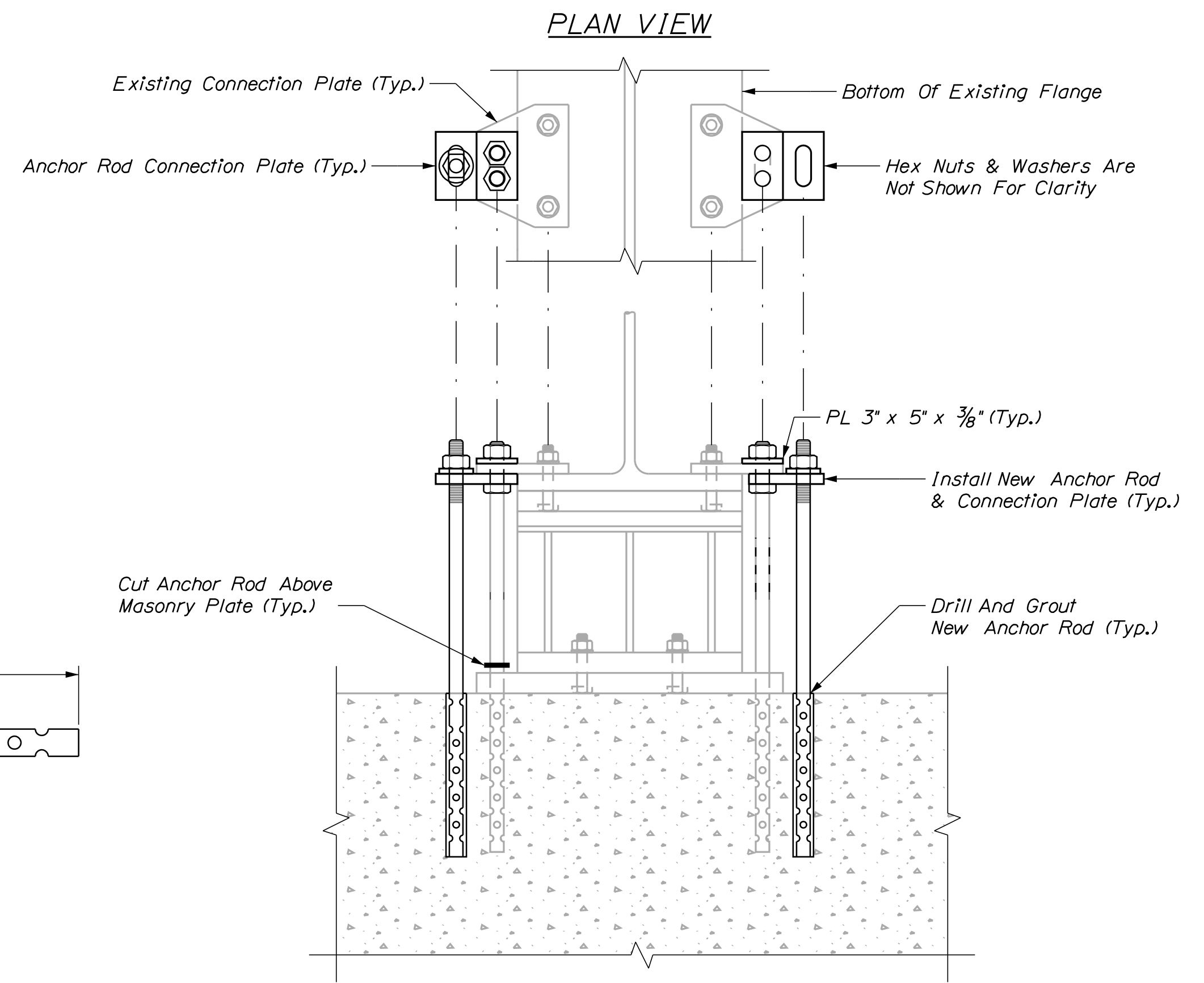
REPLACEMENT ANCHOR ROD



PARAPET MODIFICATION DETAIL

NOTES:

1. Anchor rods shall be swaged or threaded on the embedded portion. Embedment depth shall be a minimum of 12". Anchor rods shall meet the requirements of ASTM F1554, Grade 105, and be galvanized according to ASTM A153.
2. All new bearing connection elements shall be hot-dip galvanized in accordance with ASTM A123 or ASTM A153. Payment will be incidental to the 523 Pay Items.
3. Repair to the top of the backwall will be paid under Pay Item 518.50.
4. Demolition for parapet modifications will be incidental to Superstructure Removal. New concrete for parapet modifications will be paid under Pay Item 518.60.

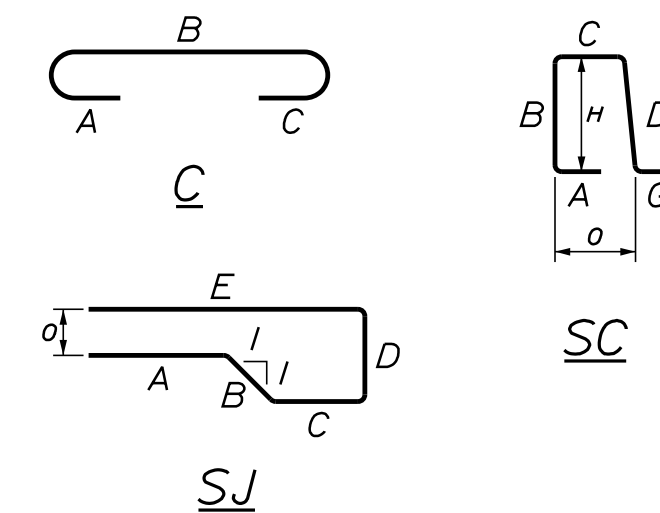


BEARING REPAIR DETAIL

STATE OF MAINE		DEPARTMENT OF TRANSPORTATION		021715.00		BRIDGE NO. 3135		WIN		21715.00		BRIDGE PLANS	
DEAD RIVER BRIDGE		NORTH BRANCH DEAD RIVER		FRANKLIN COUNTY		CHAIN OF PONDS		ABUTMENT REHABILITATION		SHEET NUMBER		14	
PROJ. MANAGER	M. Wight	BY	J. Hasbrouck	DATE	June 2018	CHECKED	M. Gray	DATE	June 2018	SIGNATURE	P.E. NUMBER	DATE	
DESIGN DETAILED		DESIGNED		DESIGNED		DESIGNED		REVISIONS 1					
								REVISIONS 2					
								REVISIONS 3					
								REVISIONS 4					
								FIELD CHANGES					

STRAIGHT BARS				BENT BARS														
MARK	QTY.	LENGTH	LOCATION	MARK	QTY.	LENGTH	TYPE	A	B	C	D	E	F	G	H	O	R	LOCATION
S500	514	14'-10"	Superstructure	S550	228	5'-2"	SC	0'-10"	1'-2 1/2"	1'-3"	1'-2 1/2"				0'-10"	1'-2 1/2"	1'-4"	Superstructure Curb
S500-A	16	4'-3 1/2"	Superstructure	S551	319	5'-9 1/2"	C	0'-7"	5'-2 1/2"									Superstructure
S500-B	16	5'-6"	Superstructure	S552	60	12'-11"	SJ	1'-10"	0'-2 1/2"	4'-2"	0'-5 1/2"	6'-3"				0'-3"		Superstructure
S500-C	16	6'-9"	Superstructure															
S500-D	16	8'-0"	Superstructure															
S500-E	16	9'-2 1/2"	Superstructure															
S500-F	16	10'-5 1/2"	Superstructure															
S500-G	16	11'-8 1/2"	Superstructure															
S500-H	16	12'-11"	Superstructure															
S500-J	8	14'-2"	Superstructure															
S501	176	30'-0"	Superstructure															
S502	88	20'-8"	Superstructure															
S503	32	3'-0"	Around Bridge Drains															
S600	108	19'-1"	Superstructure															

TYPE - BENDING DIAGRAMS



All dimensions are out-to-out of bar.
 Bending details and hooks shall conform to the recommendations of the current revision of ACI Standard 315 and ACI Standard 318.

Reinforcing Bar: ASTM A 615/A 615M, Grade 60

GENERAL NOTES

- The first two digits following the letter(s) of the mark indicate the size of the bar:
 Mark "A502" = bar size #5
 Mark "P805" = bar size #8
 Mark "S650" = bar size #6
- Each crank bar, Type B, may be replaced by two (2) straight bars (one top and one bottom) of the same bar size as the crank bar. Payment in either case will be based on crank bars as scheduled on the plans.

STATE OF MAINE
 DEPARTMENT OF TRANSPORTATION
 021715.00
 WIN
 21715.00
 BRIDGE NO. 3135
 BRIDGE PLANS

DATE: June 2018
 BY: J. Hasbrouck
 M.R.P.
 M. Gray
 SIGNATURE: _____
 P.E. NUMBER: _____
 DATE: _____

PROJ. MANAGER: M. Wight
 DESIGN-DETAILED: J. Hasbrouck
 CHECKED-REVIEWED: M. Gray
 DESIGN-DETAILED: _____
 REVISIONS 1: _____
 REVISIONS 2: _____
 REVISIONS 3: _____
 REVISIONS 4: _____
 FIELD CHANGES: _____

DEAD RIVER BRIDGE
 NORTH BRANCH DEAD RIVER
 CHAIN OF PONDS FRANKLIN COUNTY
 REINFORCING
 STEEL SCHEDULE

SHEET NUMBER
 15
 OF 16

Town, County, State _____
 Approx. Property Lines _____ P.L.
 Existing Right of Way _____
 Limits of Wrought Portion _____ L.O.W.P.
 Control Of Access _____ C.O.A.
 New Right of Way _____
 New Easement _____
 New Temporary Rights _____
 New R/W Within Existing R/W _____

New R/W Along Existing R/W _____
 Building _____
 Trees Conifer _____
 Tree Line _____
 Water Edge _____
 Ledge _____
 Fence CHAIN LINK _____
 Sign _____
 Clearing Limit Line CLL _____
 Bush Line _____
 Rock/Boulder _____
 BARB WIRE _____
 Well _____
 Flag Pole _____
 STOCKADE _____
 Mailbox _____

PLAN LEGEND
 Existing Proposed
 Sanitary Sewer _____
 Telephone Line _____
 Electric Line _____
 Water Line _____
 Underdrain Line _____
 Gas Line _____
 Guardrail _____
 Culvert _____

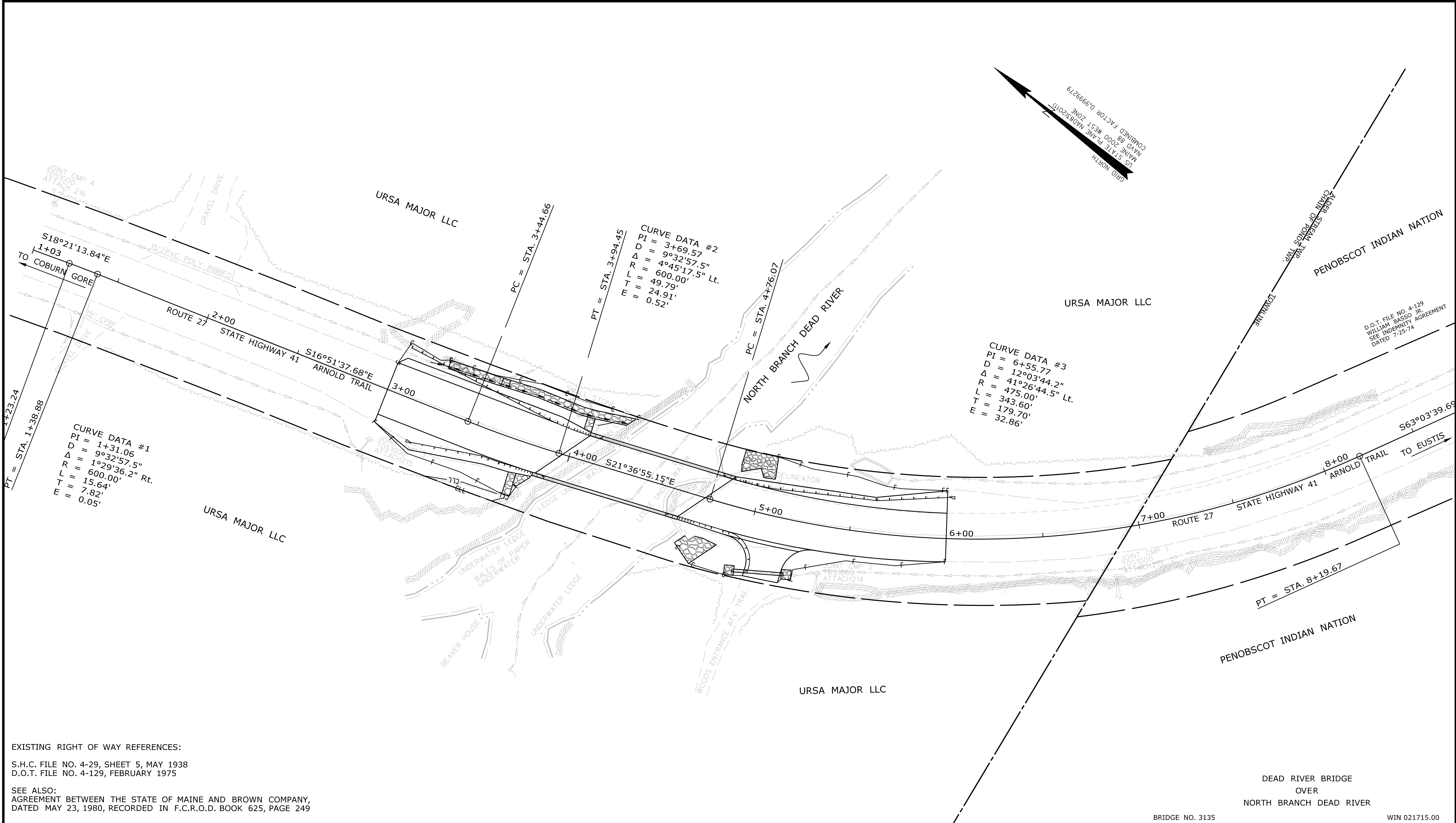
Travelled Way _____
 Ditch _____
 Catch Basin _____
 Manhole _____
 Sewer Manhole _____
 Utility Pole _____
 Fire Hydrant _____
 Curbing _____

Cut Line _____
 Stonewall _____
 Baseline _____
 Monument _____
 Iron Rod Found IRF _____
 Replacement Pin Set _____
 Fill Line _____
 Retaining Wall _____
 Traverse Point _____
 Pipe Found IPF _____

STATE OF MAINE
 REGISTRY OF DEEDS
 COUNTY _____
 RECEIVED _____
 at _____ h _____ m _____ M and recorded in _____
 Plan Book _____, Page _____
 Attest: _____ REGISTER

THIS PLAN WAS PREPARED IN CONNECTION WITH THE DEPARTMENT'S ACQUISITION OF REAL PROPERTY FOR TRANSPORTATION PURPOSES. IT CANNOT BE USED TO ESTABLISH LEGAL BOUNDARIES BETWEEN ADJUTING PROPERTY OWNERS.

25 0 25 50 75 100
 Scale of Feet



EXISTING RIGHT OF WAY REFERENCES:
 S.H.C. FILE NO. 4-29, SHEET 5, MAY 1938
 D.O.T. FILE NO. 4-129, FEBRUARY 1975
 SEE ALSO:
 AGREEMENT BETWEEN THE STATE OF MAINE AND BROWN COMPANY,
 DATED MAY 23, 1980, RECORDED IN F.C.R.O.D. BOOK 625, PAGE 249

REVISIONS			PLAN FILED IN PLAN BOOK				PAGE COUNTY RECORD			
NO.	DATE	DESCRIPTION	BY	NO.	GRANTOR	INSTRUMENT	DATE	BOOK	PAGE	DATE

DAVID BERNHARDT
 COMMISSIONER
 JOYCE NOEL TAYLOR
 CHIEF ENGINEER
 DATE _____

STATE HIGHWAY "41"
 ROUTE 27 ARNOLD TRAIL
 CHAIN OF PONDS (T2R6 WBKP) FRANKLIN COUNTY
 FEDERAL AID PROJECT NO. STP-2171(500)

MAY 2018
 SCALE 1" = 25'
 RIGHT-OF-WAY MAP
 SHEET 1 OF 1

SHEET NUMBER
16
 OF 16

Username: Joshua.P.Hasbrouck Date: 6/26/2018
 Division: BRIDGE
 Filename: ... \000\ROW\MSTA001_RWP\PLAN1.dgn

ITEM	TECH	CHECKED
EXISTING CONDITION PLAN	PNS	
FINAL RIGHT OF WAY	PNS	
AREAS		

STATE OF MAINE
 DEPARTMENT OF TRANSPORTATION
 CHAIN OF PONDS (T2R6 WBKP)
 RIGHT OF WAY MAP
 16 STATE HOUSE STATION - AUGUSTA, ME 04333-0016 - 207-624-3460