

# STATE OF MAINE DEPARTMENT OF TRANSPORTATION



## INDUSTRY FRANKLIN COUNTY SAWYER BRIDGE OVER FALLS BROOK SHAW HILL ROAD FEDERAL AID PROJECT NO. STP-2169(500) PROJECT LENGTH 0.028 mi. BRIDGE NO. 5047

**SPECIFICATIONS**

Design: Load and Resistance Factor Design per AASHTO LRFD Bridge Design Specifications, Eighth Edition 2017.

**DESIGN LOADING**

Live Load ..... HL - 93 Modified for Strength I

**TRAFFIC DATA**

Current (2019) AADT .....	300
Future (2039) AADT .....	360
DHV - % of AADT .....	13
Design Hour Volume .....	47
Heavy Trucks (% of AADT) .....	9
Heavy Trucks (% of DHV) .....	9
Directional Distribution (% of DHV) .....	60
18 kip Equivalent P 2.0 .....	12
18 kip Equivalent P 2.5 .....	12
Design Speed (mph) .....	30

**HYDROLOGIC DATA \***

Drainage Area .....	11.5 sq mi
Design Discharge (Q50) .....	1034.5 cfs
Check Discharge (Q100) .....	1198.3 cfs
Headwater Elevation (Q1.1) .....	499.3 ft
Headwater Elevation (Q25) .....	501.7 ft
Headwater Elevation (Q50) .....	502.2 ft
Headwater Elevation (Q100) .....	502.6 ft
Discharge Velocity (Q1.1) .....	2.9 fps
Discharge Velocity (Q50) .....	8.9 fps
Discharge Velocity (Q100) .....	9.8 fps

\* Headwater Elevation and Discharge Velocity based on 37'-0" span by 7'-2" rise Precast Concrete Arch

**LIST OF DRAWINGS**

Title Sheet .....	1
Estimated Quantities and General Construction Notes .....	2
General Plan and Profile .....	3
Boring Location Plan and Interpretive Subsurface Profile .....	4
Boring Logs .....	5
Highway Approach Cross - Sections .....	6-9
Right of Way Map .....	10
Traffic Control Plan .....	11

**UTILITIES**

Central Maine Power ..... Bee Line Television  
Consolidated Communications

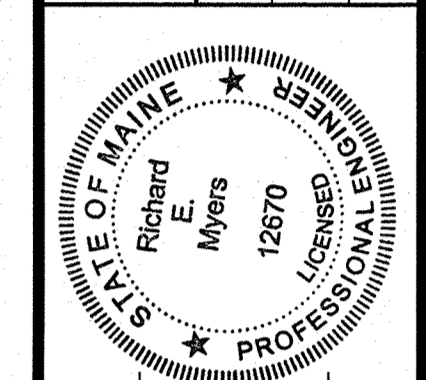
**MAINTENANCE OF TRAFFIC**

Bridge will be closed during construction with traffic detoured.

<b>PROJECT LOCATION</b>	On Shaw Hill Road, Located 0.04 of a mile South of the intersection with Route 148. Lat./Long. 44°45'51.9" N 70°00'56" W
<b>PROGRAM AREA</b>	Highway Bridge - Traditional
<b>OUTLINE OF WORK</b>	Bridge Replacement

STATE OF MAINE  
DEPARTMENT OF TRANSPORTATION

APPROVED: *[Signature]* DATE: 11/19/18  
COMMISSIONER: *[Signature]*  
CHIEF ENGINEER: *[Signature]*



*[Signature]*  
SIGNATURE  
12670  
P.E. NUMBER  
OCTOBER 31, 2018  
DATE

PROGRAM	BRIDGE
PROJECT MANAGER	MICHAEL WIGHT
DESIGNER	BEN BARTLETT
CONSULTANT	
PROJECT RESIDENT	
CONTRACTOR	
PROJECT COMPLETION DATE	

INDUSTRY  
SAWYER BRIDGE  
TITLE SHEET

SHEET NUMBER  
**1**  
OF 11

Username: Benjamin.J.Bartlett Date: 10/31/2018

Division: BRIDGE

Filename: \\00\BRIDGE\MSTA\001\_Title.dgn

WIN 21695.00

STP-2169(500)

Date: 10/22/2018

Username: David.Shaw

Division: BRIDGE

Filename: ... \MSTAN002\_Estimate&CCN.dgn

ESTIMATED QUANTITIES			
ITEM NO.	DESCRIPTION	QUANTITY	UNIT
202.202	REMOVE PAVEMENT SURFACE	122	SY
203.20	COMMON EXCAVATION	420	CY
203.24	COMMON BORROW	10	CY
206.092	STRUCTURAL ROCK EXCAVATION - MAJOR STRUCTURES	10	CY
304.10	AGGREGATE SUBBASE COURSE - GRAVEL	310	CY
403.208	HOT MIX ASPHALT 12.5MM SURFACE	68	T
403.213	HOT MIX ASPHALT 12.5MM BASE	98	T
409.15	BITUMINOUS TACK COAT - APPLIED	27	G
411.09	UNTREATED AGGREGATE SURFACE COURSE	5	CY
502.22	STRUCT. CONC., ABUTMENTS & RET. WALLS (PLACED UNDERWATER)	20	CY
511.07	COFFERDAM: UPSTREAM	1	LS
511.07	COFFERDAM: DOWNSTREAM	1	LS
526.301	TEMPORARY CONCRETE BARRIER TYPE I (40 LF)	1	LS
531.51	BRIDGE STRUCTURE - DETAIL BUILD	1	LS
606.23	GUARDRAIL TYPE 3C - SINGLE RAIL	225	LF
606.232	GUARDRAIL TYPE 3C - OVER 15 FOOT RADIUS	25	LF
606.265	TERMINAL END - SINGLE RAIL - GALVANIZED STEEL	1	EA
606.353	REFLECTORIZED FLEXIBLE GUARDRAIL MARKER	8	EA
606.78	LOW VOLUME GUARDRAIL END - TYPE 3	3	EA
610.08	PLAIN RIPRAP	225	CY
610.18	STONE DITCH PROTECTION	5	CY
613.319	EROSION CONTROL BLANKET	80	SY
615.07	LOAM	11	CY
618.14	SEEDING METHOD NUMBER 2	2	UN
619.12	MULCH	2	UN
619.14	EROSION CONTROL MIX	22	CY
620.58	EROSION CONTROL GEOTEXTILE	350	SY
629.05	HAND LABOR, STRAIGHT TIME	40	HR
631.12	ALL PURPOSE EXCAVATOR (INCLUDING OPERATOR)	10	HR
631.14	GRADER (INCLUDING OPERATOR)	10	HR
631.15	ROLLER, EARTH AND BASE COURSE (INCLUDING OPERATOR)	10	HR
631.172	TRUCK - LARGE (INCLUDING OPERATOR)	10	HR
639.19	FIELD OFFICE TYPE B	1	EA
652.312	TYPE III BARRICADE	6	EA
652.33	DRUM	25	EA
652.34	CONE	25	EA
652.35	CONSTRUCTION SIGNS	500	SF
652.361	MAINTENANCE OF TRAFFIC CONTROL DEVICES (60 CD)	1	LS
652.38	FLAGGER	240	HR
656.75	TEMPORARY SOIL EROSION AND WATER POLLUTION CONTROL	1	LS
659.10	MOBILIZATION	1	LS

GENERAL CONSTRUCTION NOTES

- During construction, the road will be closed to traffic for a time period specified in the Special Provisions.
- For easements, construction limits and right of way lines, refer to Right of Way Map.
- The clearing limits as shown on the plans are approximate. The exact limits will be established in the field by the Resident. Payment for clearing will be considered incidental to Contract items.
- All utility facilities shall be adjusted by the respective utilities unless otherwise noted.
- Do not excavate for Aggregate Subbase Course where existing material is suitable as determined by the Resident.
- In areas where the Resident directs the Contractor not to excavate to the subgrade line shown on the plans, payment for removing existing pavement, grubbing, shaping, ditching, and compacting the existing subbase and layers of new subbase 6 inches or less thick will be made under appropriate equipment rental items.
- Backfill material for the buried structure shall be in accordance with the appropriate specifications.
- Stones which cannot be rolled or compacted into the surface of the gravel drive shall be removed by hand raking. Payment for hand raking will be considered incidental to Item No. 411.09, Untreated Aggregate Surface Course.
- Place loam 2 inches deep on all new or reconstructed sideslopes or as directed by the Resident.
- Erosion Control Mix may be substituted in those areas normally receiving loam and seed as directed by the Resident. Placement shall be in accordance with Standard Specifications Section 619, Mulch. Payment will be made under Item No. 619.14, Erosion Control Mix.
- Place a 24-in. wide strip of Temporary Erosion Control Blanket on the sideslopes along the top of the riprap and behind the wingwalls.
- A Low Volume Guardrail End shall be installed concurrently with the placement of each section of beam guardrail.
- Extended-use Erosion Control Blanket, seeded gutters, riprap downspouts, and other gutters lined with Stone Ditch Protection shall be constructed after paving and shoulder work is completed, where it is apparent that runoff will cause continual erosion. Payment will be made under the appropriate Contract items.
- Excavation below the bottom of the subbase elevation, excluding rock excavation, will be considered structural earth excavation and incidental to the Bridge Structure - Detail Build pay item. Excavation above the bottom of the subbase elevation for placement of aggregate subbase course gravel will be considered common excavation. Rock excavation will be paid for under Pay Item 206.092, Structural Rock Excavation - Major Structures.
- Project information referred to below may be accessed at the following MaineDOT web address: <http://www.maine.gov/mdot/contractors/>.
- The existing bridge plans may be accessed at the MaineDOT web address. The plans are reproductions of the original drawings as prepared for the construction of the bridge. It is very unlikely that the plans will show any construction field changes or any alterations which may have been made to the bridge during its life span.
- The hydrologic report of the bridge site may be accessed at the MaineDOT web address. The hydrologic report is based on MaineDOT's interpretation of the information obtained for the subject site. No assurance is given that the information or the conclusions of the report will be representative of actual conditions at the time of construction.
- The project geotechnical report titled: **GEOTECHNICAL DESIGN REPORT For the Replacement of SAWYER BRIDGE, SHAW HILL ROAD OVER FALLS BROOK, Soils Report 2018-35, dated October 3, 2018** may be accessed at the MaineDOT web address.
- Geotechnical information furnished or referred to in this plan set is for the use of the Bidders and the Contractor. No assurance is given that the information or interpretations will be representative of actual subsurface conditions at the construction site. MaineDOT will not be responsible for the Bidders' or Contractor's interpretations of, or conclusions drawn from, the geotechnical information. The boring logs contained in the plan set present factual and interpretive subsurface information collected at discrete locations. Data provided may not be representative of the subsurface conditions between the boring locations.

- Quantities included for pay items measured and paid for by Lump Sum are estimated quantities and are provided by MaineDOT for informational purposes only. Lump Sum pay items will be paid for at the Contract Bid amount, with no addition or reduction in payment to the Contractor if the actual final quantities are different from the MaineDOT provided estimated quantities, except as follows:
  - If a Lump Sum pay item is eliminated, the requirements of Standard Specifications Section 109.2, Elimination of Items, will take precedence.
  - If other Contract Documents specifically allow a change in payment for a Lump Sum pay item, those requirements will be followed.
  - If a design change results in changes to estimated quantities for Lump Sum pay items, price adjustments will be made in accordance with Standard Specifications Section 109.7, Equitable Adjustments to Compensation.
- Guardrail posts over the buried structure shall be modified and cast in concrete as shown in Standard Detail 606(20).

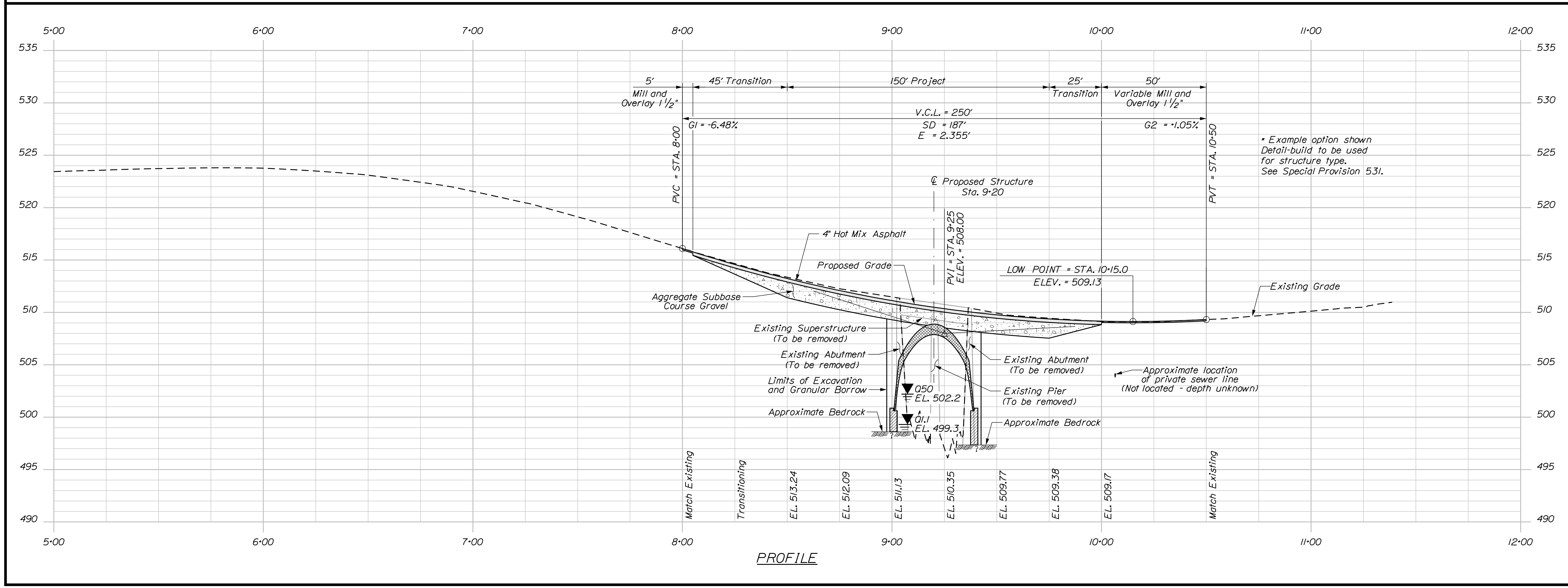
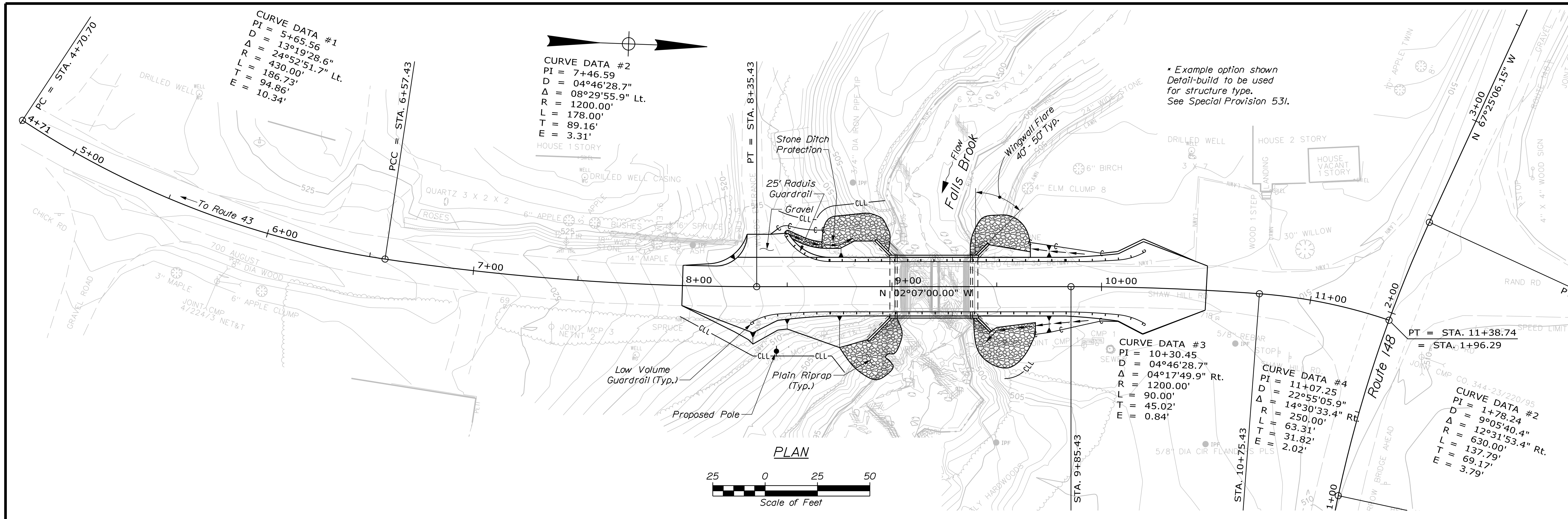
STATE OF MAINE		DEPARTMENT OF TRANSPORTATION	
SAWYER BRIDGE		FRANKLIN COUNTY	
FALLS BROOK		INDUSTRY	
ESTIMATED QUANTITIES AND GENERAL CONSTRUCTION NOTES		STP-2169(500)	
SHEET NUMBER		WIN 21695.00	
2		BRIDGE NO. 5047	
OF 11		BRIDGE PLANS	

Date: 10/22/2018

Username: David Shaw

Division: BRIDGE

Filename: ... \MSTA\003\_CenPlan&Profile.dgn

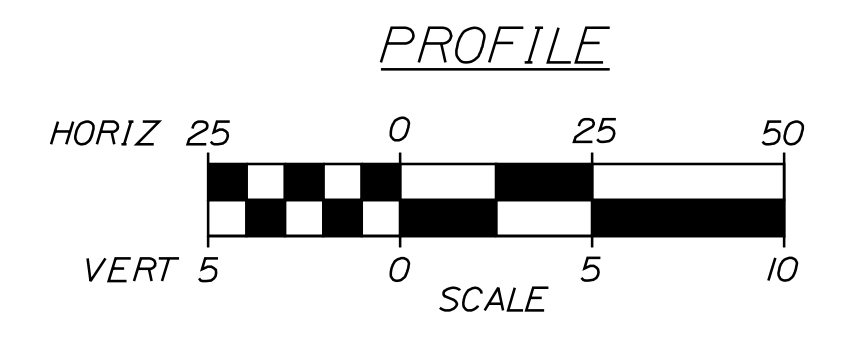
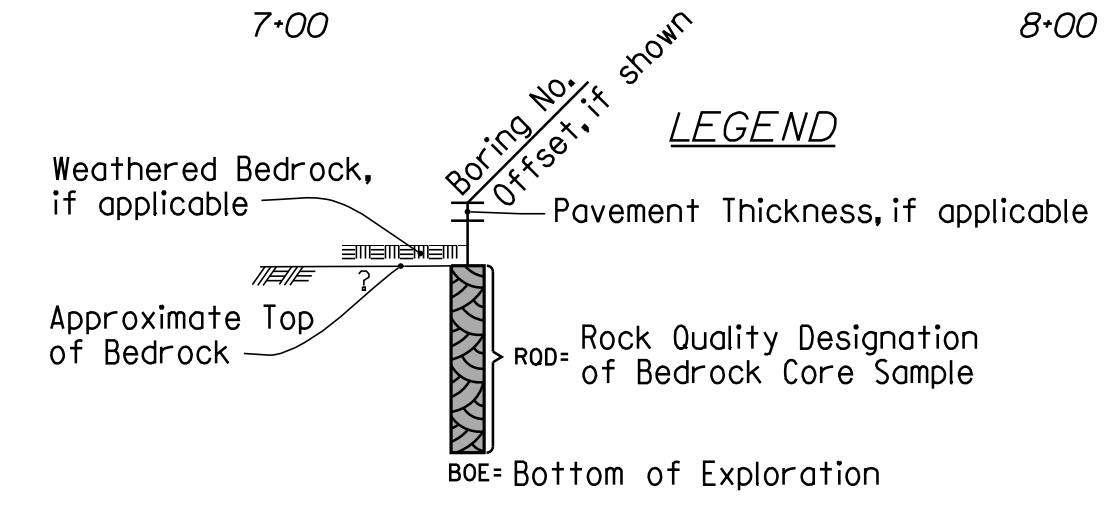
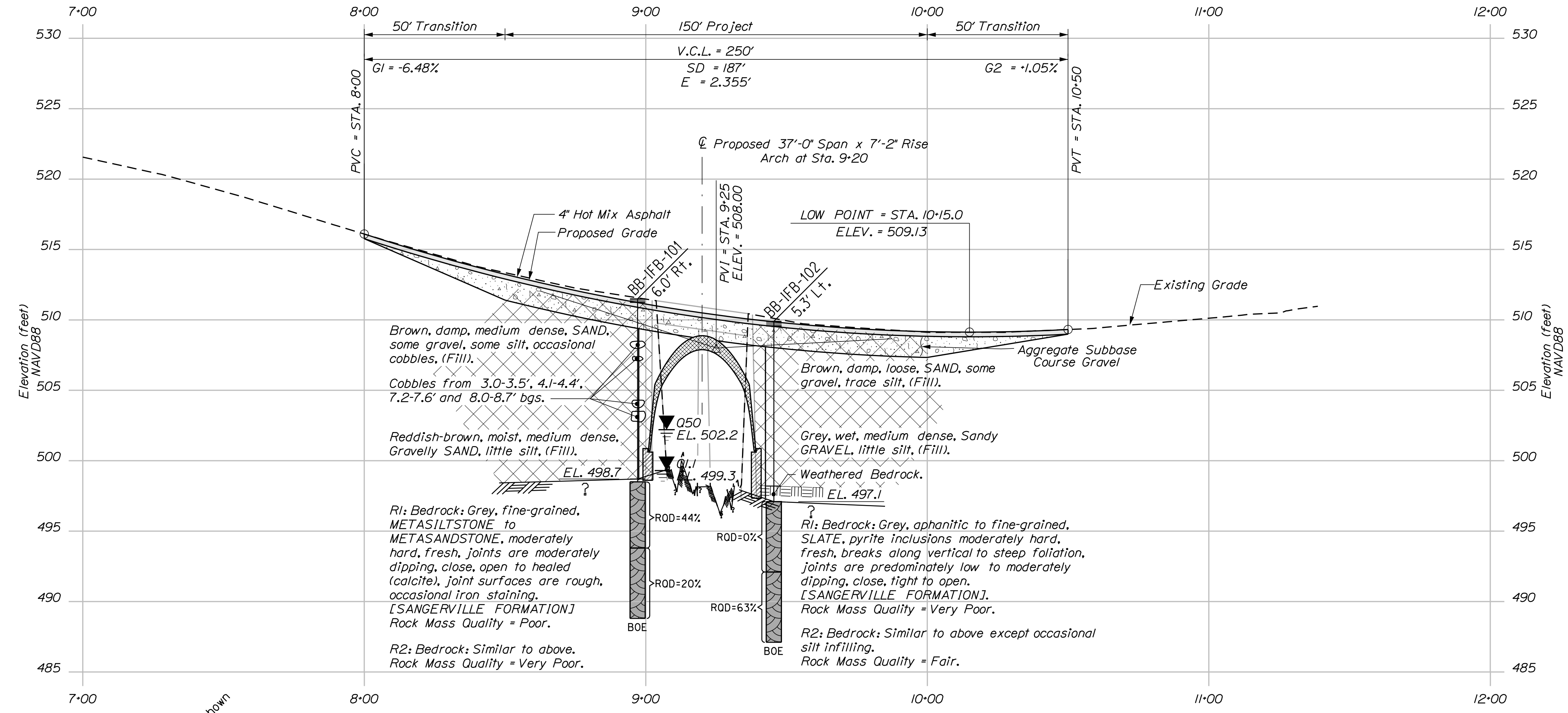
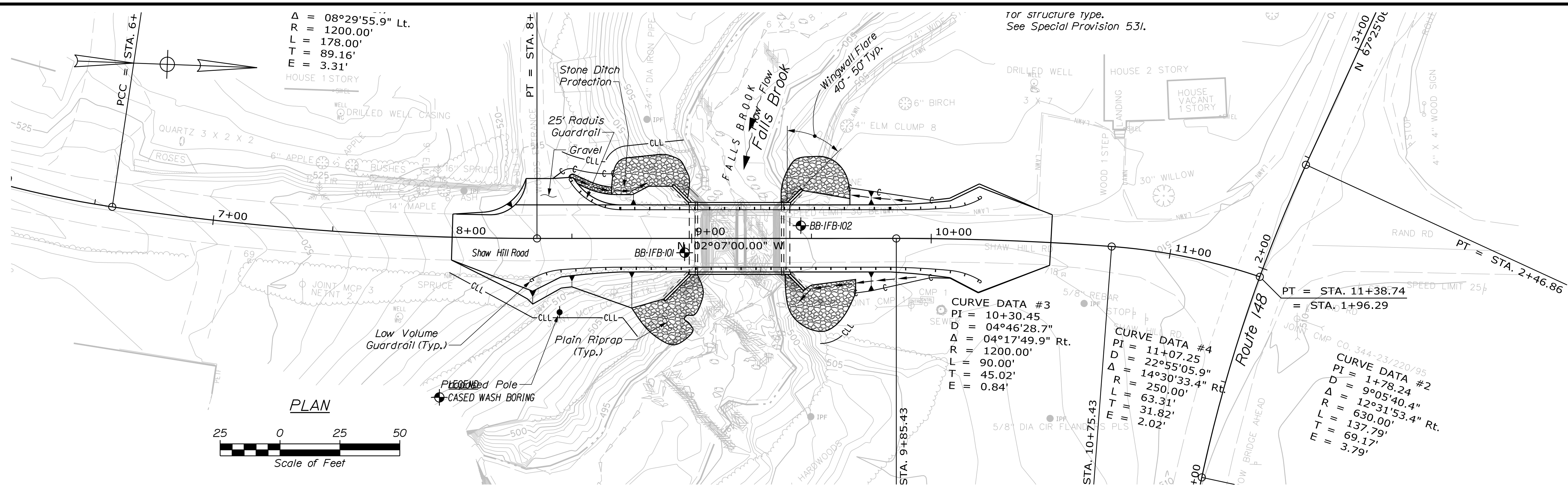


STATE OF MAINE		DEPARTMENT OF TRANSPORTATION		STP-2169(500)		BRIDGE NO. 5047		WIN		21695.00	
SAWYER BRIDGE		FALLS BROOK		FRANKLIN COUNTY		INDUSTRY		GENERAL PLAN AND PROFILE		SHEET NUMBER	
3		OF 11		DATE		P.E. NUMBER		SIGNATURE		DATE	
M. WIGHT		B. BARTLETT		D. SHAW		AUG 2018		T. WHITE		SEP 2017	
DESIGN-DETAILED		CHECKED-REVIEWED		DESIGNS-DETAILED		DESIGNS-DETAILED		REVISIONS 1		REVISIONS 2	
DESIGNS-DETAILED		DESIGNS-DETAILED		DESIGNS-DETAILED		DESIGNS-DETAILED		REVISIONS 3		REVISIONS 4	
DESIGNS-DETAILED		DESIGNS-DETAILED		DESIGNS-DETAILED		DESIGNS-DETAILED		REVISIONS 5		REVISIONS 6	
DESIGNS-DETAILED		DESIGNS-DETAILED		DESIGNS-DETAILED		DESIGNS-DETAILED		REVISIONS 7		REVISIONS 8	
DESIGNS-DETAILED		DESIGNS-DETAILED		DESIGNS-DETAILED		DESIGNS-DETAILED		REVISIONS 9		REVISIONS 10	
DESIGNS-DETAILED		DESIGNS-DETAILED		DESIGNS-DETAILED		DESIGNS-DETAILED		REVISIONS 11		REVISIONS 12	
DESIGNS-DETAILED		DESIGNS-DETAILED		DESIGNS-DETAILED		DESIGNS-DETAILED		REVISIONS 13		REVISIONS 14	
DESIGNS-DETAILED		DESIGNS-DETAILED		DESIGNS-DETAILED		DESIGNS-DETAILED		REVISIONS 15		REVISIONS 16	
DESIGNS-DETAILED		DESIGNS-DETAILED		DESIGNS-DETAILED		DESIGNS-DETAILED		REVISIONS 17		REVISIONS 18	
DESIGNS-DETAILED		DESIGNS-DETAILED		DESIGNS-DETAILED		DESIGNS-DETAILED		REVISIONS 19		REVISIONS 20	
DESIGNS-DETAILED		DESIGNS-DETAILED		DESIGNS-DETAILED		DESIGNS-DETAILED		REVISIONS 21		REVISIONS 22	
DESIGNS-DETAILED		DESIGNS-DETAILED		DESIGNS-DETAILED		DESIGNS-DETAILED		REVISIONS 23		REVISIONS 24	
DESIGNS-DETAILED		DESIGNS-DETAILED		DESIGNS-DETAILED		DESIGNS-DETAILED		REVISIONS 25		REVISIONS 26	
DESIGNS-DETAILED		DESIGNS-DETAILED		DESIGNS-DETAILED		DESIGNS-DETAILED		REVISIONS 27		REVISIONS 28	
DESIGNS-DETAILED		DESIGNS-DETAILED		DESIGNS-DETAILED		DESIGNS-DETAILED		REVISIONS 29		REVISIONS 30	
DESIGNS-DETAILED		DESIGNS-DETAILED		DESIGNS-DETAILED		DESIGNS-DETAILED		REVISIONS 31		REVISIONS 32	
DESIGNS-DETAILED		DESIGNS-DETAILED		DESIGNS-DETAILED		DESIGNS-DETAILED		REVISIONS 33		REVISIONS 34	
DESIGNS-DETAILED		DESIGNS-DETAILED		DESIGNS-DETAILED		DESIGNS-DETAILED		REVISIONS 35		REVISIONS 36	
DESIGNS-DETAILED		DESIGNS-DETAILED		DESIGNS-DETAILED		DESIGNS-DETAILED		REVISIONS 37		REVISIONS 38	
DESIGNS-DETAILED		DESIGNS-DETAILED		DESIGNS-DETAILED		DESIGNS-DETAILED		REVISIONS 39		REVISIONS 40	
DESIGNS-DETAILED		DESIGNS-DETAILED		DESIGNS-DETAILED		DESIGNS-DETAILED		REVISIONS 41		REVISIONS 42	
DESIGNS-DETAILED		DESIGNS-DETAILED		DESIGNS-DETAILED		DESIGNS-DETAILED		REVISIONS 43		REVISIONS 44	
DESIGNS-DETAILED		DESIGNS-DETAILED		DESIGNS-DETAILED		DESIGNS-DETAILED		REVISIONS 45		REVISIONS 46	
DESIGNS-DETAILED		DESIGNS-DETAILED		DESIGNS-DETAILED		DESIGNS-DETAILED		REVISIONS 47		REVISIONS 48	
DESIGNS-DETAILED		DESIGNS-DETAILED		DESIGNS-DETAILED		DESIGNS-DETAILED		REVISIONS 49		REVISIONS 50	
DESIGNS-DETAILED		DESIGNS-DETAILED		DESIGNS-DETAILED		DESIGNS-DETAILED		REVISIONS 51		REVISIONS 52	
DESIGNS-DETAILED		DESIGNS-DETAILED		DESIGNS-DETAILED		DESIGNS-DETAILED		REVISIONS 53		REVISIONS 54	
DESIGNS-DETAILED		DESIGNS-DETAILED		DESIGNS-DETAILED		DESIGNS-DETAILED		REVISIONS 55		REVISIONS 56	
DESIGNS-DETAILED		DESIGNS-DETAILED		DESIGNS-DETAILED		DESIGNS-DETAILED		REVISIONS 57		REVISIONS 58	
DESIGNS-DETAILED		DESIGNS-DETAILED		DESIGNS-DETAILED		DESIGNS-DETAILED		REVISIONS 59		REVISIONS 60	
DESIGNS-DETAILED		DESIGNS-DETAILED		DESIGNS-DETAILED		DESIGNS-DETAILED		REVISIONS 61		REVISIONS 62	
DESIGNS-DETAILED		DESIGNS-DETAILED		DESIGNS-DETAILED		DESIGNS-DETAILED		REVISIONS 63		REVISIONS 64	
DESIGNS-DETAILED		DESIGNS-DETAILED		DESIGNS-DETAILED		DESIGNS-DETAILED		REVISIONS 65		REVISIONS 66	
DESIGNS-DETAILED		DESIGNS-DETAILED		DESIGNS-DETAILED		DESIGNS-DETAILED		REVISIONS 67		REVISIONS 68	
DESIGNS-DETAILED		DESIGNS-DETAILED		DESIGNS-DETAILED		DESIGNS-DETAILED		REVISIONS 69		REVISIONS 70	
DESIGNS-DETAILED		DESIGNS-DETAILED		DESIGNS-DETAILED		DESIGNS-DETAILED		REVISIONS 71		REVISIONS 72	
DESIGNS-DETAILED		DESIGNS-DETAILED		DESIGNS-DETAILED		DESIGNS-DETAILED		REVISIONS 73		REVISIONS 74	
DESIGNS-DETAILED		DESIGNS-DETAILED		DESIGNS-DETAILED		DESIGNS-DETAILED		REVISIONS 75		REVISIONS 76	
DESIGNS-DETAILED		DESIGNS-DETAILED		DESIGNS-DETAILED		DESIGNS-DETAILED		REVISIONS 77		REVISIONS 78	
DESIGNS-DETAILED		DESIGNS-DETAILED		DESIGNS-DETAILED		DESIGNS-DETAILED		REVISIONS 79		REVISIONS 80	
DESIGNS-DETAILED		DESIGNS-DETAILED		DESIGNS-DETAILED		DESIGNS-DETAILED		REVISIONS 81		REVISIONS 82	
DESIGNS-DETAILED		DESIGNS-DETAILED		DESIGNS-DETAILED		DESIGNS-DETAILED		REVISIONS 83		REVISIONS 84	
DESIGNS-DETAILED		DESIGNS-DETAILED		DESIGNS-DETAILED		DESIGNS-DETAILED		REVISIONS 85		REVISIONS 86	
DESIGNS-DETAILED		DESIGNS-DETAILED		DESIGNS-DETAILED		DESIGNS-DETAILED		REVISIONS 87		REVISIONS 88	
DESIGNS-DETAILED		DESIGNS-DETAILED		DESIGNS-DETAILED		DESIGNS-DETAILED		REVISIONS 89		REVISIONS 90	
DESIGNS-DETAILED		DESIGNS-DETAILED		DESIGNS-DETAILED		DESIGNS-DETAILED		REVISIONS 91		REVISIONS 92	
DESIGNS-DETAILED		DESIGNS-DETAILED		DESIGNS-DETAILED		DESIGNS-DETAILED		REVISIONS 93		REVISIONS 94	
DESIGNS-DETAILED		DESIGNS-DETAILED		DESIGNS-DETAILED		DESIGNS-DETAILED		REVISIONS 95		REVISIONS 96	
DESIGNS-DETAILED		DESIGNS-DETAILED		DESIGNS-DETAILED		DESIGNS-DETAILED		REVISIONS 97		REVISIONS 98	
DESIGNS-DETAILED		DESIGNS-DETAILED		DESIGNS-DETAILED		DESIGNS-DETAILED		REVISIONS 99		REVISIONS 100	

Date: 10/22/2018

Username: David Shaw

Filename: ... \GEO\TECH\STA\004\_BLP&S\SP1.dgn Division: BRIDGE



Note: This generalized interpretive soil profile is intended to convey trends in subsurface conditions. The boundaries between strata are approximate and idealized, and have been developed by interpretations of widely spaced explorations and samples. Actual soil and bedrock transitions may vary and are probably more erratic. For more specific information refer to the exploration logs.

STATE OF MAINE		DEPARTMENT OF TRANSPORTATION	
STP-2169(500)		WIN 21695.00	
BRIDGE NO. 5047		BRIDGE PLANS	
PROJ. MANAGER	BY	DATE	
CHECKED-REVIEWED		SEP 2017	SIGNATURE
DESIGNS DET AILED	T. WHITE		P.E. NUMBER
DESIGNS DET AILED	B. SJAVEN		DATE
REVISIONS 1			
REVISIONS 2			
REVISIONS 3			
REVISIONS 4			
FIELD CHANGES			
SAWYER BRIDGE			
FALLS BROOK			
FRANKLIN COUNTY			
INDUSTRY			
BORING LOCATION PLAN & INTERPRETIVE SUBSURFACE PROFILE			
SHEET NUMBER			
4			
OF 11			

Date: 10/22/2018

Username: David.Shaw

Division: BRIDGE

Filename: ... \MSTAD005\_BORING\_LOGS1.dgn

Maine Department of Transportation Soil/Rock Exploration Log US CUSTOMARY UNITS		Project: Sawyer Bridge #5047 carries Shaw Hill Road over Falls Brook Location: Industry, Maine		Boring No.: BB-IFB-101																																																																																																																													
Driller: MaineDOT		Elevation (ft.): 511.5		Auger ID/OD: 5" Solid Stem																																																																																																																													
Operator: Travis/James		Datum: NAVD88		Sampler: Standard Split Spoon																																																																																																																													
Logged By: B. Wilder		Rig Type: CME 45C		Hammer Wt./Fall: 140#/30"																																																																																																																													
Date Start/Finish: 9/13/2017: 11:00-14:00		Drilling Method: Cased Wash Boring		Core Barrel: NO-2"																																																																																																																													
Boring Location: 8+97.1, 6.0 ft Rt.		Casing ID/OD: NW-3"		Water Level*: 9.5 ft bgs.																																																																																																																													
Hammer Efficiency Factor: 0.854		Hammer Type: Automatic <input checked="" type="checkbox"/> Hydraulic <input type="checkbox"/> Rope & Cathead <input type="checkbox"/>																																																																																																																															
Definitions: R = Rock Core Sample S <sub>u</sub> = Peak/Retained Field Vane Undrained Shear Strength (psf) T <sub>v</sub> = Pocket Torvane Shear Strength (psf) D = Split Spoon Sample SSA = Solid Stem Auger S <sub>u(Lab)</sub> = Lab Vane Undrained Shear Strength (psf) WC = Water Content, percent MD = Unsuccessful Split Spoon Sample Attempt HSA = Hollow Stem Auger q <sub>u</sub> = Unconfined Compressive Strength (ksf) LL = Liquid Limit U = Thin Wall Tube Sample RC = Roller Cone N <sub>uncorrected</sub> = Raw Field SPT N-value PL = Plastic Limit MU = Unsuccessful Thin Wall Tube Sample Attempt WOH = Weight of 140lb. Hammer Hammer Efficiency Factor = Rig Specific Annual Calibration Val BB = Plasticity Index Y = Field Vane Shear Test. PP = Pocket Penetrometer/MOR/C = Weight of Rods or Casing N <sub>60</sub> = SPT N-uncorrected Corrected for Hammer Efficiency G = Grain Size Analysis MW = Unsuccessful Field Vane Shear Test Attempt WOP = Weight of One Person N <sub>60</sub> = (Hammer Efficiency Factor/60%)N <sub>uncorrected</sub> C = Consolidation Test																																																																																																																																	
<table border="1"> <thead> <tr> <th colspan="7">Sample Information</th> <th rowspan="2">Visual Description and Remarks</th> <th rowspan="2">Laboratory Testing Results/AASHTO and Unified Class</th> </tr> <tr> <th>Depth (ft.)</th> <th>Sample No.</th> <th>Pen./Rec. (in.)</th> <th>Sample Depth (ft.)</th> <th>Blows /6 in. Shear Strength (psf) or ROD (%)</th> <th>N-uncorrected</th> <th>N<sub>60</sub></th> </tr> </thead> <tbody> <tr> <td>0</td> <td></td> <td></td> <td></td> <td></td> <td></td> <td></td> <td>3" HMA.</td> <td>0-3</td> </tr> <tr> <td></td> <td></td> <td></td> <td></td> <td></td> <td></td> <td></td> <td>Cobble from 3.0-3.5 ft bgs.</td> <td></td> </tr> <tr> <td></td> <td></td> <td></td> <td></td> <td></td> <td></td> <td></td> <td>Cobble from 4.1-4.4 ft bgs.</td> <td></td> </tr> <tr> <td>5</td> <td>1D</td> <td>24/14</td> <td>5.00 - 7.00</td> <td>6/10/7/7</td> <td>17</td> <td>24</td> <td>Brown, damp, medium dense, SAND, some gravel, some silt, occasional cobbles, (F111).</td> <td>G#303028 A-1-b, SM WC=15.2%</td> </tr> <tr> <td></td> <td></td> <td></td> <td></td> <td></td> <td></td> <td></td> <td>Roller Coned ahead from 7.0-10.0 ft bgs.</td> <td></td> </tr> <tr> <td></td> <td></td> <td></td> <td></td> <td></td> <td></td> <td></td> <td>Cobble from 7.2-7.6 ft bgs.</td> <td></td> </tr> <tr> <td></td> <td></td> <td></td> <td></td> <td></td> <td></td> <td></td> <td>Cobble from 8.0-8.7 ft bgs.</td> <td></td> </tr> <tr> <td>10</td> <td>2D</td> <td>24/15</td> <td>10.00 - 12.00</td> <td>8/8/12/28</td> <td>20</td> <td>28</td> <td>Reddish-brown, moist, medium dense, Gravelly SAND, little silt, (F111).</td> <td>G#303029 A-1-b, SM WC=16.0%</td> </tr> <tr> <td></td> <td></td> <td></td> <td></td> <td></td> <td></td> <td></td> <td>0157 blows for 0.8 ft.</td> <td></td> </tr> <tr> <td></td> <td>R1</td> <td>56.4/55</td> <td>13.00 - 17.70</td> <td>ROD = 44%</td> <td></td> <td></td> <td>Top of Bedrock at Elev. 498.7 ft. Roller Coned ahead to 13.0 ft bgs. R1: Bedrock: Grey, fine-grained, METASILTSTONE to METASANDSTONE, moderately hard, fresh, joints are moderately dipping, close, open to healed (calcite), joint surfaces are rough, occasional iron staining. [SANGERVILLE FORMATION] Rock Mass Quality = Poor. R1: Core Times (min:sec) 13.0-14.0 ft (1:48) 14.0-15.0 ft (2:50) 15.0-16.0 ft (1:33) 16.0-17.0 ft (1:50) 17.0-17.7 ft (3:00) Core Blocked 99% Recovery</td> <td>13.2-13.5 q<sub>p</sub> = 19.5 ksi</td> </tr> <tr> <td></td> <td></td> <td></td> <td></td> <td></td> <td></td> <td></td> <td>R2: Bedrock: Similar to above. Rock Mass Quality = Very Poor. R2: Core Times (min:sec) 17.7-18.7 ft (1:18) 18.7-19.7 ft (1:17) 19.7-20.7 ft (1:06) 20.7-21.7 ft (1:24) 21.7-22.7 ft (1:31) 100% Recovery</td> <td></td> </tr> <tr> <td>20</td> <td></td> <td></td> <td></td> <td></td> <td></td> <td></td> <td>Bottom of Exploration at 22.7 feet below ground surface.</td> <td>22.7</td> </tr> </tbody> </table>						Sample Information							Visual Description and Remarks	Laboratory Testing Results/AASHTO and Unified Class	Depth (ft.)	Sample No.	Pen./Rec. (in.)	Sample Depth (ft.)	Blows /6 in. Shear Strength (psf) or ROD (%)	N-uncorrected	N <sub>60</sub>	0							3" HMA.	0-3								Cobble from 3.0-3.5 ft bgs.									Cobble from 4.1-4.4 ft bgs.		5	1D	24/14	5.00 - 7.00	6/10/7/7	17	24	Brown, damp, medium dense, SAND, some gravel, some silt, occasional cobbles, (F111).	G#303028 A-1-b, SM WC=15.2%								Roller Coned ahead from 7.0-10.0 ft bgs.									Cobble from 7.2-7.6 ft bgs.									Cobble from 8.0-8.7 ft bgs.		10	2D	24/15	10.00 - 12.00	8/8/12/28	20	28	Reddish-brown, moist, medium dense, Gravelly SAND, little silt, (F111).	G#303029 A-1-b, SM WC=16.0%								0157 blows for 0.8 ft.			R1	56.4/55	13.00 - 17.70	ROD = 44%			Top of Bedrock at Elev. 498.7 ft. Roller Coned ahead to 13.0 ft bgs. R1: Bedrock: Grey, fine-grained, METASILTSTONE to METASANDSTONE, moderately hard, fresh, joints are moderately dipping, close, open to healed (calcite), joint surfaces are rough, occasional iron staining. [SANGERVILLE FORMATION] Rock Mass Quality = Poor. R1: Core Times (min:sec) 13.0-14.0 ft (1:48) 14.0-15.0 ft (2:50) 15.0-16.0 ft (1:33) 16.0-17.0 ft (1:50) 17.0-17.7 ft (3:00) Core Blocked 99% Recovery	13.2-13.5 q <sub>p</sub> = 19.5 ksi								R2: Bedrock: Similar to above. Rock Mass Quality = Very Poor. R2: Core Times (min:sec) 17.7-18.7 ft (1:18) 18.7-19.7 ft (1:17) 19.7-20.7 ft (1:06) 20.7-21.7 ft (1:24) 21.7-22.7 ft (1:31) 100% Recovery		20							Bottom of Exploration at 22.7 feet below ground surface.	22.7
Sample Information							Visual Description and Remarks	Laboratory Testing Results/AASHTO and Unified Class																																																																																																																									
Depth (ft.)	Sample No.	Pen./Rec. (in.)	Sample Depth (ft.)	Blows /6 in. Shear Strength (psf) or ROD (%)	N-uncorrected	N <sub>60</sub>																																																																																																																											
0							3" HMA.	0-3																																																																																																																									
							Cobble from 3.0-3.5 ft bgs.																																																																																																																										
							Cobble from 4.1-4.4 ft bgs.																																																																																																																										
5	1D	24/14	5.00 - 7.00	6/10/7/7	17	24	Brown, damp, medium dense, SAND, some gravel, some silt, occasional cobbles, (F111).	G#303028 A-1-b, SM WC=15.2%																																																																																																																									
							Roller Coned ahead from 7.0-10.0 ft bgs.																																																																																																																										
							Cobble from 7.2-7.6 ft bgs.																																																																																																																										
							Cobble from 8.0-8.7 ft bgs.																																																																																																																										
10	2D	24/15	10.00 - 12.00	8/8/12/28	20	28	Reddish-brown, moist, medium dense, Gravelly SAND, little silt, (F111).	G#303029 A-1-b, SM WC=16.0%																																																																																																																									
							0157 blows for 0.8 ft.																																																																																																																										
	R1	56.4/55	13.00 - 17.70	ROD = 44%			Top of Bedrock at Elev. 498.7 ft. Roller Coned ahead to 13.0 ft bgs. R1: Bedrock: Grey, fine-grained, METASILTSTONE to METASANDSTONE, moderately hard, fresh, joints are moderately dipping, close, open to healed (calcite), joint surfaces are rough, occasional iron staining. [SANGERVILLE FORMATION] Rock Mass Quality = Poor. R1: Core Times (min:sec) 13.0-14.0 ft (1:48) 14.0-15.0 ft (2:50) 15.0-16.0 ft (1:33) 16.0-17.0 ft (1:50) 17.0-17.7 ft (3:00) Core Blocked 99% Recovery	13.2-13.5 q <sub>p</sub> = 19.5 ksi																																																																																																																									
							R2: Bedrock: Similar to above. Rock Mass Quality = Very Poor. R2: Core Times (min:sec) 17.7-18.7 ft (1:18) 18.7-19.7 ft (1:17) 19.7-20.7 ft (1:06) 20.7-21.7 ft (1:24) 21.7-22.7 ft (1:31) 100% Recovery																																																																																																																										
20							Bottom of Exploration at 22.7 feet below ground surface.	22.7																																																																																																																									
Remarks:																																																																																																																																	
Stratification lines represent approximate boundaries between soil types; transitions may be gradual.																																																																																																																																	
* Water level readings have been made at times and under conditions stated. Groundwater fluctuations may occur due to conditions other than those present at the time measurements were made.																																																																																																																																	
Page 1 of 1																																																																																																																																	
Boring No.: BB-IFB-101																																																																																																																																	

Maine Department of Transportation Soil/Rock Exploration Log US CUSTOMARY UNITS		Project: Sawyer Bridge #5047 carries Shaw Hill Road over Falls Brook Location: Industry, Maine		Boring No.: BB-IFB-102																																																																																																		
Driller: MaineDOT		Elevation (ft.): 509.9		Auger ID/OD: 5" Solid Stem																																																																																																		
Operator: Travis/James		Datum: NAVD88		Sampler: Standard Split Spoon																																																																																																		
Logged By: B. Wilder		Rig Type: CME 45C		Hammer Wt./Fall: 140#/30"																																																																																																		
Date Start/Finish: 9/13/2017: 08:00-11:00		Drilling Method: Cased Wash Boring		Core Barrel: NO-2"																																																																																																		
Boring Location: 9+45.5, 5.3 ft Lt.		Casing ID/OD: NW-3"		Water Level*: None Observed																																																																																																		
Hammer Efficiency Factor: 0.854		Hammer Type: Automatic <input checked="" type="checkbox"/> Hydraulic <input type="checkbox"/> Rope & Cathead <input type="checkbox"/>																																																																																																				
Definitions: R = Rock Core Sample S <sub>u</sub> = Peak/Retained Field Vane Undrained Shear Strength (psf) T <sub>v</sub> = Pocket Torvane Shear Strength (psf) D = Split Spoon Sample SSA = Solid Stem Auger S <sub>u(Lab)</sub> = Lab Vane Undrained Shear Strength (psf) WC = Water Content, percent MD = Unsuccessful Split Spoon Sample Attempt HSA = Hollow Stem Auger q <sub>u</sub> = Unconfined Compressive Strength (ksf) LL = Liquid Limit U = Thin Wall Tube Sample RC = Roller Cone N <sub>uncorrected</sub> = Raw Field SPT N-value PL = Plastic Limit MU = Unsuccessful Thin Wall Tube Sample Attempt WOH = Weight of 140lb. Hammer Hammer Efficiency Factor = Rig Specific Annual Calibration Val BB = Plasticity Index Y = Field Vane Shear Test. PP = Pocket Penetrometer/MOR/C = Weight of Rods or Casing N <sub>60</sub> = SPT N-uncorrected Corrected for Hammer Efficiency G = Grain Size Analysis MW = Unsuccessful Field Vane Shear Test Attempt WOP = Weight of One Person N <sub>60</sub> = (Hammer Efficiency Factor/60%)N <sub>uncorrected</sub> C = Consolidation Test																																																																																																						
<table border="1"> <thead> <tr> <th colspan="7">Sample Information</th> <th rowspan="2">Visual Description and Remarks</th> <th rowspan="2">Laboratory Testing Results/AASHTO and Unified Class</th> </tr> <tr> <th>Depth (ft.)</th> <th>Sample No.</th> <th>Pen./Rec. (in.)</th> <th>Sample Depth (ft.)</th> <th>Blows /6 in. Shear Strength (psf) or ROD (%)</th> <th>N-uncorrected</th> <th>N<sub>60</sub></th> </tr> </thead> <tbody> <tr> <td>0</td> <td></td> <td></td> <td></td> <td></td> <td></td> <td></td> <td>4" HMA.</td> <td>0-3</td> </tr> <tr> <td></td> <td></td> <td></td> <td></td> <td></td> <td></td> <td></td> <td>Brown, damp, loose, SAND, some gravel, trace silt, (F111).</td> <td>G#303030 A-1-b, SW-SM WC=4.8%</td> </tr> <tr> <td>5</td> <td>1D</td> <td>24/7</td> <td>5.00 - 7.00</td> <td>5/2/3/3</td> <td>5</td> <td>7</td> <td></td> <td></td> </tr> <tr> <td></td> <td></td> <td></td> <td></td> <td></td> <td></td> <td></td> <td>Grey, wet, medium dense, Sandy GRAVEL, little silt, (F111).</td> <td>G#303031 A-1-a, GM WC=11.4%</td> </tr> <tr> <td></td> <td></td> <td></td> <td></td> <td></td> <td></td> <td></td> <td>Weathered bedrock in tip of spoon.</td> <td></td> </tr> <tr> <td></td> <td></td> <td></td> <td></td> <td></td> <td></td> <td></td> <td>Weathered Bedrock. 0150 Blows for 0.8 ft.</td> <td></td> </tr> <tr> <td></td> <td>R1</td> <td>60/60</td> <td>12.80 - 17.80</td> <td>ROD = 0%</td> <td></td> <td></td> <td>Top of Bedrock at Elev. 497.1 ft. R1: Bedrock: Grey, aphanitic to fine-grained, SLATE, pyrite inclusions moderately hard, fresh, breaks along vertical to steep foliation, joints are predominantly low to moderately dipping, close, tight to open. [SANGERVILLE FORMATION]. Rock Mass Quality = Very Poor. R1: Core Times (min:sec) 12.8-13.8 ft (1:50) 13.8-14.8 ft (2:28) 14.8-15.8 ft (1:45) 15.8-16.8 ft (1:42) 16.8-17.8 ft (2:10) 100% Recovery</td> <td>498.2 497.1</td> </tr> <tr> <td></td> <td></td> <td></td> <td></td> <td></td> <td></td> <td></td> <td>R2: Bedrock: Similar to above except occasional silt infilling. Rock Mass Quality = Fair. R2: Core Times (min:sec) 17.8-18.8 ft (1:37) 18.8-19.8 ft (1:43) 19.8-20.8 ft (1:50) 20.8-21.8 ft (1:31) 21.8-22.8 ft (1:44) 100% Recovery</td> <td></td> </tr> <tr> <td>20</td> <td></td> <td></td> <td></td> <td></td> <td></td> <td></td> <td>Bottom of Exploration at 22.8 feet below ground surface.</td> <td>21.7-22.0 q<sub>p</sub> = 11.1 ksi</td> </tr> </tbody> </table>						Sample Information							Visual Description and Remarks	Laboratory Testing Results/AASHTO and Unified Class	Depth (ft.)	Sample No.	Pen./Rec. (in.)	Sample Depth (ft.)	Blows /6 in. Shear Strength (psf) or ROD (%)	N-uncorrected	N <sub>60</sub>	0							4" HMA.	0-3								Brown, damp, loose, SAND, some gravel, trace silt, (F111).	G#303030 A-1-b, SW-SM WC=4.8%	5	1D	24/7	5.00 - 7.00	5/2/3/3	5	7										Grey, wet, medium dense, Sandy GRAVEL, little silt, (F111).	G#303031 A-1-a, GM WC=11.4%								Weathered bedrock in tip of spoon.									Weathered Bedrock. 0150 Blows for 0.8 ft.			R1	60/60	12.80 - 17.80	ROD = 0%			Top of Bedrock at Elev. 497.1 ft. R1: Bedrock: Grey, aphanitic to fine-grained, SLATE, pyrite inclusions moderately hard, fresh, breaks along vertical to steep foliation, joints are predominantly low to moderately dipping, close, tight to open. [SANGERVILLE FORMATION]. Rock Mass Quality = Very Poor. R1: Core Times (min:sec) 12.8-13.8 ft (1:50) 13.8-14.8 ft (2:28) 14.8-15.8 ft (1:45) 15.8-16.8 ft (1:42) 16.8-17.8 ft (2:10) 100% Recovery	498.2 497.1								R2: Bedrock: Similar to above except occasional silt infilling. Rock Mass Quality = Fair. R2: Core Times (min:sec) 17.8-18.8 ft (1:37) 18.8-19.8 ft (1:43) 19.8-20.8 ft (1:50) 20.8-21.8 ft (1:31) 21.8-22.8 ft (1:44) 100% Recovery		20							Bottom of Exploration at 22.8 feet below ground surface.	21.7-22.0 q <sub>p</sub> = 11.1 ksi
Sample Information							Visual Description and Remarks	Laboratory Testing Results/AASHTO and Unified Class																																																																																														
Depth (ft.)	Sample No.	Pen./Rec. (in.)	Sample Depth (ft.)	Blows /6 in. Shear Strength (psf) or ROD (%)	N-uncorrected	N <sub>60</sub>																																																																																																
0							4" HMA.	0-3																																																																																														
							Brown, damp, loose, SAND, some gravel, trace silt, (F111).	G#303030 A-1-b, SW-SM WC=4.8%																																																																																														
5	1D	24/7	5.00 - 7.00	5/2/3/3	5	7																																																																																																
							Grey, wet, medium dense, Sandy GRAVEL, little silt, (F111).	G#303031 A-1-a, GM WC=11.4%																																																																																														
							Weathered bedrock in tip of spoon.																																																																																															
							Weathered Bedrock. 0150 Blows for 0.8 ft.																																																																																															
	R1	60/60	12.80 - 17.80	ROD = 0%			Top of Bedrock at Elev. 497.1 ft. R1: Bedrock: Grey, aphanitic to fine-grained, SLATE, pyrite inclusions moderately hard, fresh, breaks along vertical to steep foliation, joints are predominantly low to moderately dipping, close, tight to open. [SANGERVILLE FORMATION]. Rock Mass Quality = Very Poor. R1: Core Times (min:sec) 12.8-13.8 ft (1:50) 13.8-14.8 ft (2:28) 14.8-15.8 ft (1:45) 15.8-16.8 ft (1:42) 16.8-17.8 ft (2:10) 100% Recovery	498.2 497.1																																																																																														
							R2: Bedrock: Similar to above except occasional silt infilling. Rock Mass Quality = Fair. R2: Core Times (min:sec) 17.8-18.8 ft (1:37) 18.8-19.8 ft (1:43) 19.8-20.8 ft (1:50) 20.8-21.8 ft (1:31) 21.8-22.8 ft (1:44) 100% Recovery																																																																																															
20							Bottom of Exploration at 22.8 feet below ground surface.	21.7-22.0 q <sub>p</sub> = 11.1 ksi																																																																																														
Remarks:																																																																																																						
Stratification lines represent approximate boundaries between soil types; transitions may be gradual.																																																																																																						
* Water level readings have been made at times and under conditions stated. Groundwater fluctuations may occur due to conditions other than those present at the time measurements were made.																																																																																																						
Page 1 of 1																																																																																																						
Boring No.: BB-IFB-102																																																																																																						

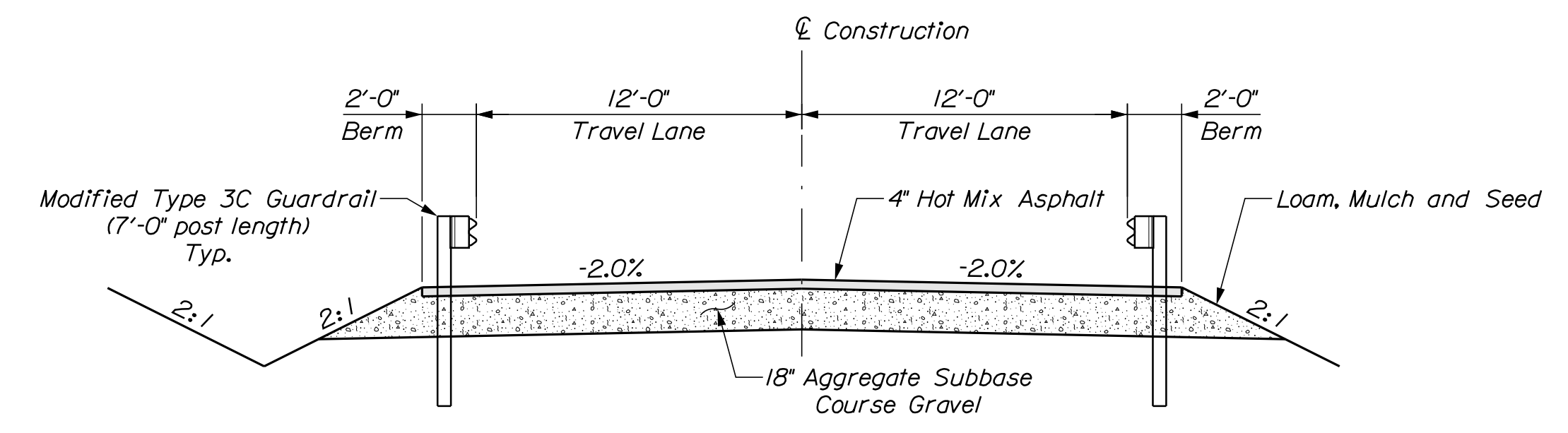
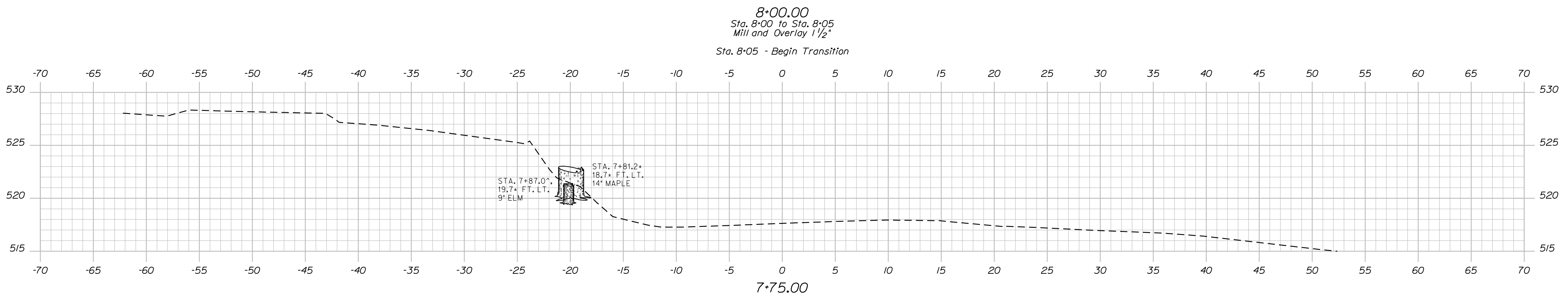
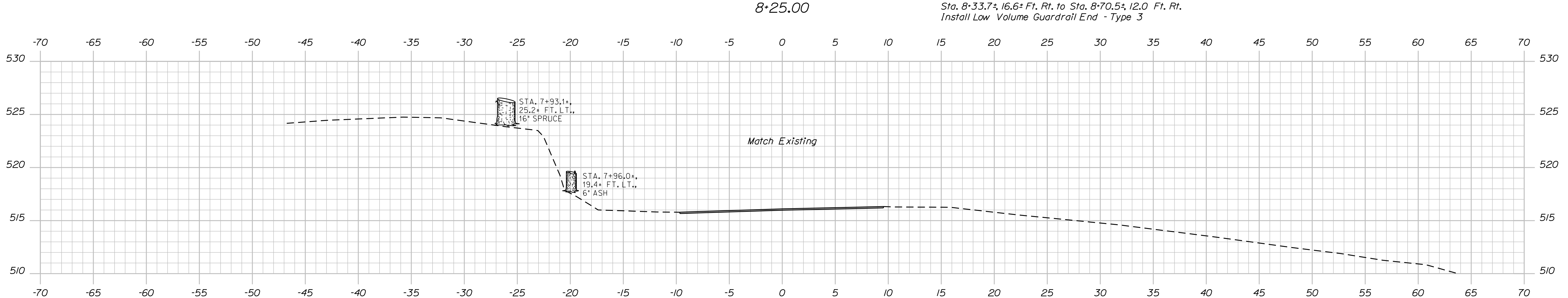
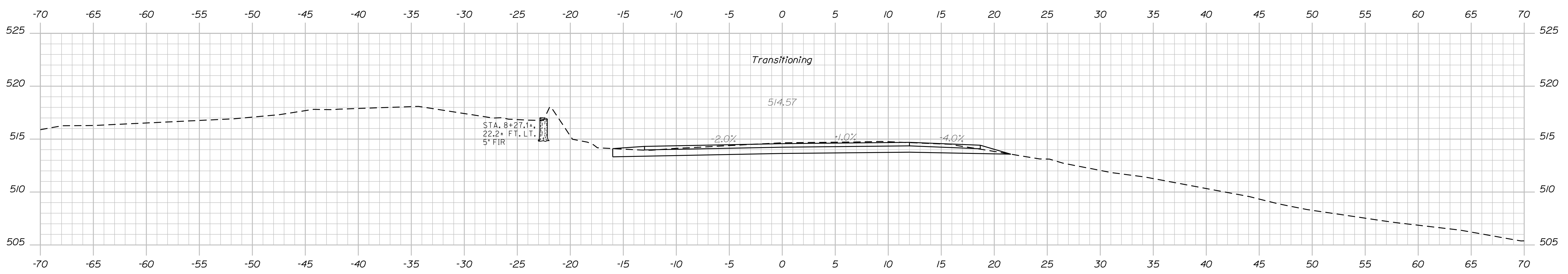
STATE OF MAINE DEPARTMENT OF TRANSPORTATION		STP-2169(500)		BRIDGE NO. 5047		WIN 21695.00		BRIDGE PLANS	
SAWYER BRIDGE FALLS BROOK INDUSTRY		FRANKLIN COUNTY		BORING LOGS		SHEET NUMBER		5	
PROJ. MANAGER		DATE		BY		SIGNATURE		P.E. NUMBER	
DESIGN-DETAILED		AUG 2018		T. WHITE					
CHECKED-REVIEWED				B. SJAVEN					
DESIGNS-DETAILED									
REVISIONS 1									
REVISIONS 2									
REVISIONS 3									
REVISIONS 4									
FIELD CHANGES									

Date: 10/22/2018

Username: David Shaw

Division: BRIDGE

Filename: ... \MSTA\006\_XSECT\_7+75-8+25.dgn



TYPICAL APPROACH SECTION

STATE OF MAINE  
DEPARTMENT OF TRANSPORTATION  
STP-2169(500)  
WIN  
21695.00  
BRIDGE NO. 5047  
BRIDGE PLANS

PROJ. MANAGER	M. WIGHT	BY	DATE
CHECKED/REVIEWED	B. BARTLETT	D. SHAW	AUG 2018
DESIGN/DETAILED	B.S. AVEN	T. WHITE	SEP 2017
REVISIONS 1			
REVISIONS 2			
REVISIONS 3			
REVISIONS 4			
FIELD CHANGES			

SIGNATURE	P.E. NUMBER	DATE

INDUSTRY  
SAWYER BRIDGE  
FALLS BROOK  
FRANKLIN COUNTY  
CROSS SECTIONS

SHEET NUMBER  
**6**  
OF 11

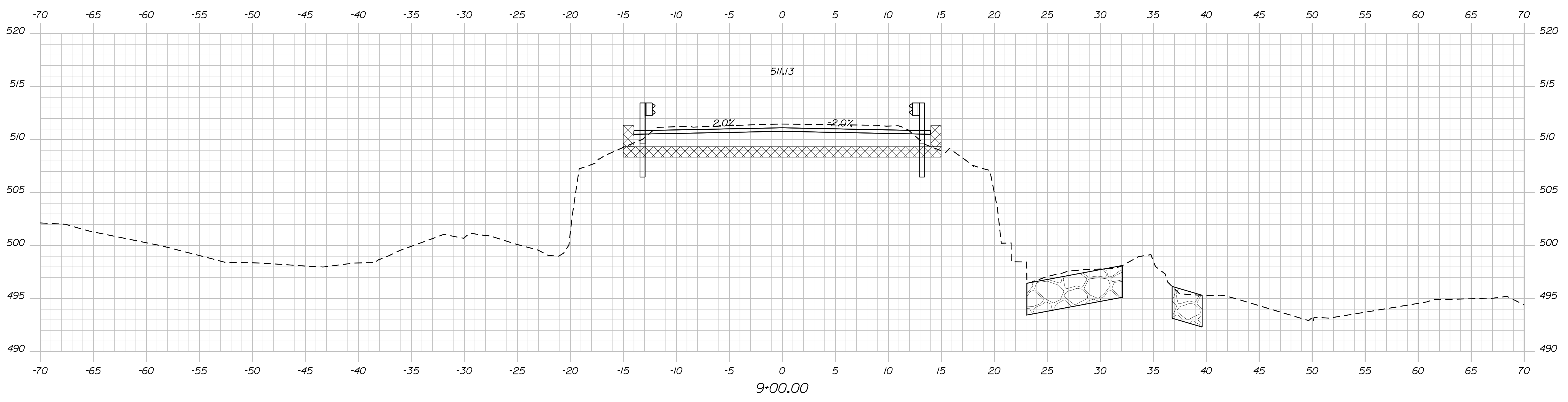
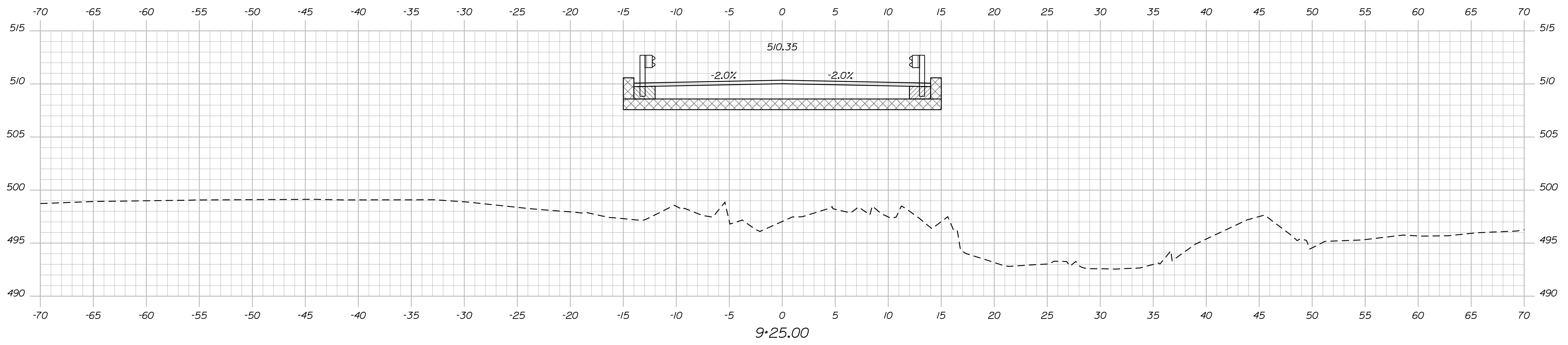
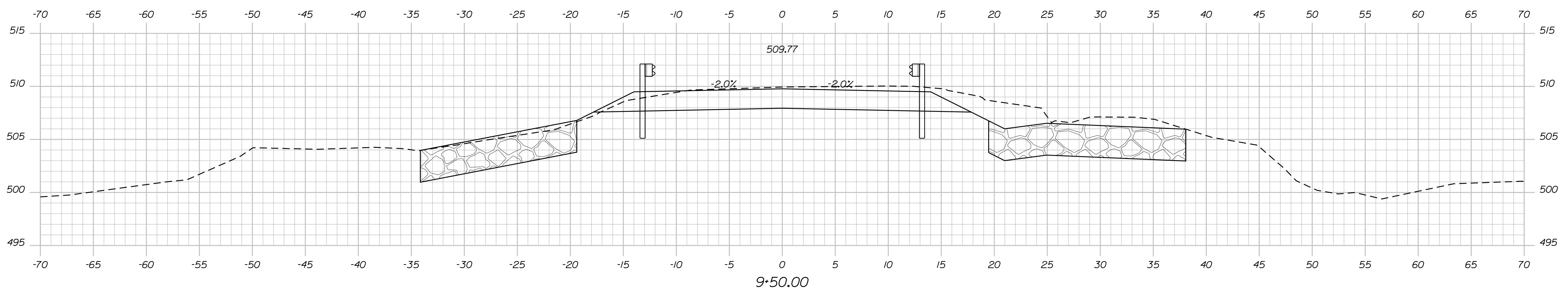


Date: 10/22/2018

Username: David.Shaw

Division: BRIDGE

Filename: ... \MSTA\008\_XSECT\_9+00-9+50.dgn



STATE OF MAINE  
DEPARTMENT OF TRANSPORTATION  
STP-2169(500)  
BRIDGE NO. 5047  
WIN  
21695.00  
BRIDGE PLANS

PROJ. MANAGER	M. WIGHT	BY	D. SHAW	DATE	AUG 2018
CHECKED-REVIEWED	B. BARTLETT	DESIGNED	T. WHITE	SIGNATURE	
DESIGNS DETAILED	B. SAVEN	REVISIONS 1		P.E. NUMBER	
REVISIONS 2		REVISIONS 3		DATE	
REVISIONS 4		FIELD CHANGES			

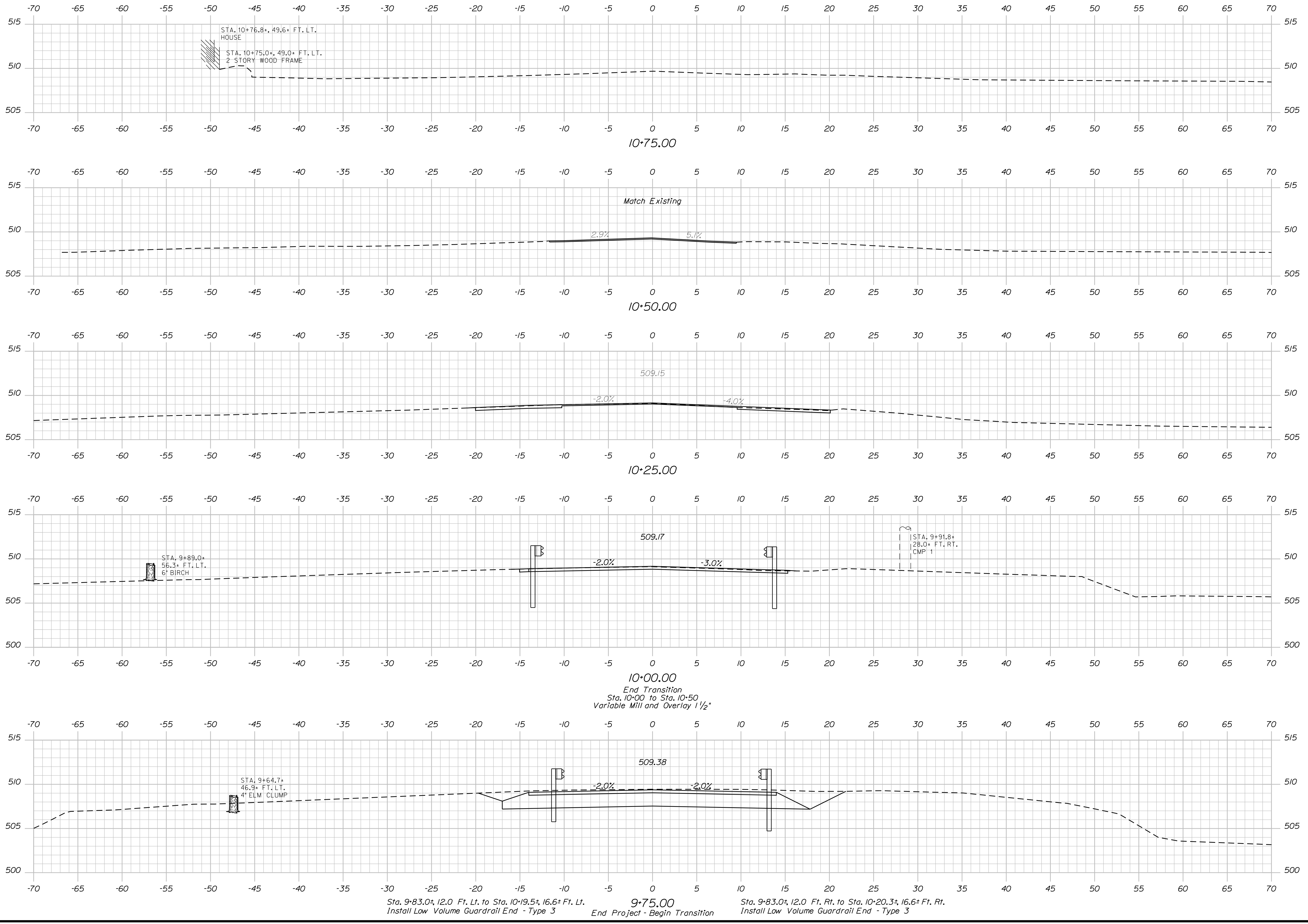
SAWYER BRIDGE  
FALLS BROOK  
FRANKLIN COUNTY  
INDUSTRY  
CROSS SECTIONS

SHEET NUMBER  
**8**  
OF 11

Date: 10/22/2018

Username: David.Shaw

Filename: ... \MSTAD09\_XSECT\_9+75-10+75.dgn Division: BRIDGE



STATE OF MAINE DEPARTMENT OF TRANSPORTATION		STP-2169(500)	
FRANKLIN COUNTY		BRIDGE NO. 5047	
SAWYER BRIDGE FALLS BROOK		WIN 21695.00	
INDUSTRY		BRIDGE PLANS	
CROSS SECTIONS		SHEET NUMBER	
9		OF 11	
PROJ. MANAGER	M. WIGHT	BY	DATE
CHECKED-REVIEWED	B. BARTLETT	D. SHAW	AUG 2018
DESIGNS-DETAILED	B. SAIVEN	T. WHITE	SEP 2017
REVISIONS 1			
REVISIONS 2			
REVISIONS 3			
REVISIONS 4			
FIELD CHANGES			
SIGNATURE		P.E. NUMBER	
DATE		DATE	

SEE BOUNDARY SURVEY PREPARED FOR FRANCIS J. DUPONT, DATED JUNE 18, 2007 F.C.R.D. PLAN FILE NO. 4987

THIS PLAN WAS PREPARED IN CONNECTION WITH THE DEPARTMENT'S ACQUISITION OF REAL PROPERTY FOR TRANSPORTATION PURPOSES. IT CANNOT BE USED TO ESTABLISH LEGAL BOUNDARIES BETWEEN ABUTTING PROPERTY OWNERS.

GRID NORTH  
NAD83 (2011) MAINE 2000 WEST ZONE  
NAVD88  
COMBINED FACTOR 0.9999697196

N/F JESSE J. AUGUST  
ELAINE A. AUGUST

FRANCIS J. DUPONT REVOCABLE TRUST  
ITEM NO. (1)  
LAND = 0.06± AC. (EASE. FOR HIGHWAY PURPOSES)  
TEMP. CONST. RIGHTS = 494± S.F. (1)  
TOTAL AREA = 87.5± AC. (PER PLAN)

FREEMAN T. CHICK  
FREEMAN L. CHICK  
ITEM NO. (3)  
LAND = 0.06± AC. (EASE. FOR HIGHWAY PURPOSES)  
TEMP. CONST. RIGHTS = 481± S.F. (1)  
TOTAL AREA = 0.68± AC. (PER TOWN)

CURVE DATA #2  
PI = 7+46.59  
D = 04°46'28.7"  
Δ = 08°29'55.9" Lt.  
R = 1200.00'  
L = 178.00'  
T = 89.16'  
E = 3.31'

CURVE DATA #1  
PI = 5+65.56  
D = 13°19'28.6"  
Δ = 24°52'51.7" Lt.  
R = 430.00'  
L = 186.73'  
T = 94.86'  
E = 10.34'

CURVE DATA #4  
PI = 11+07.25  
D = 22°55'05.9"  
Δ = 14°30'33.4" Rt.  
R = 250.00'  
L = 63.31'  
T = 31.82'  
E = 2.02'

CURVE DATA #3  
PI = 10+30.45  
D = 04°46'28.7"  
Δ = 04°17'49.9" Rt.  
R = 1200.00'  
L = 90.00'  
T = 45.02'  
E = 0.84'

CHRISTOPHER H. ROBBINS  
ZACHARY E. SMITH  
ITEM NO. (2)  
LAND = 0.06± AC. (EASE. FOR HIGHWAY PURPOSES)  
SLOPE EASE. = 700± S.F. (1)  
TEMP. CONST. RIGHTS = 138± S.F. (1)  
TOTAL AREA = 3.65± AC. (PER TOWN)

FREEMAN T. CHICK  
FREEMAN L. CHICK  
ITEM NO. (4)  
LAND = 0.06± AC. (EASE. FOR HIGHWAY PURPOSES)  
SLOPE EASE. = 450± S.F. (1)  
TEMP. CONST. RIGHTS = 687± S.F. (1)  
TOTAL AREA = 0.10± AC. (PER SURVEY PLAN)

CHRISTOPHER H. ROBBINS  
ZACHARY E. SMITH

NOTE: PRESCRIPTIVE EASEMENT FOR HIGHWAY PURPOSES WITHIN LIMITS OF WROUGHT PORTION (L.O.W.P.)

SEE BOUNDARY SURVEY MADE FOR FREEMAN T. CHICK AND FREEMAN L. CHICK DATED MAY 2015, F.C.R.D. PLAN FILE NO. 5909

BRIDGE NO. 5047 SAWYER BRIDGE OVER FALLS BROOK WIN 021695.00

Date: 10/22/2018

Username: David.Shaw

Division: BRIDGE

Filename: ... \00\ROW\MSTA001\_RWPLAN1.dgn

**SYMBOLS**

PI or PIP (IRON PIPE OR PIN FOUND)	WELL
ST. (SEPTIC TANK)	CONSTRUCTION LIMIT LINE
ABM (TRAVERSE POINT)	PROPERTY LINE
WATER LINE	LIMITS OF WROUGHT PORTION (L.O.W.P.)
GAS LINE	EXISTING RIGHT OF WAY
ELECTRIC LINE	NEW RIGHT OF WAY
TELEPHONE LINE	NEW ROW WITHIN EXIST. ROW
SEWER LINE	CONTROL OF ACCESS

ITEM	TECH	CHECKED
BASE MAP		
EXIST. R/W	PNS	
PROP. LINES	PNS	
AREAS		

STATE OF MAINE  
DEPARTMENT OF TRANSPORTATION  
16 STATE HOUSE STATION - AUGUSTA, ME 04333-0016  
INDUSTRY  
RIGHT OF WAY MAP

NO.	DATE	REVISIONS DESCRIPTION	BY	PLAN FILED IN PLAN BOOK						DAVID BERNHARDT COMMISSIONER
				NO.	GRANTOR	PAGE	COUNTY RECORD INSTRUMENT	DATE	BOOK	

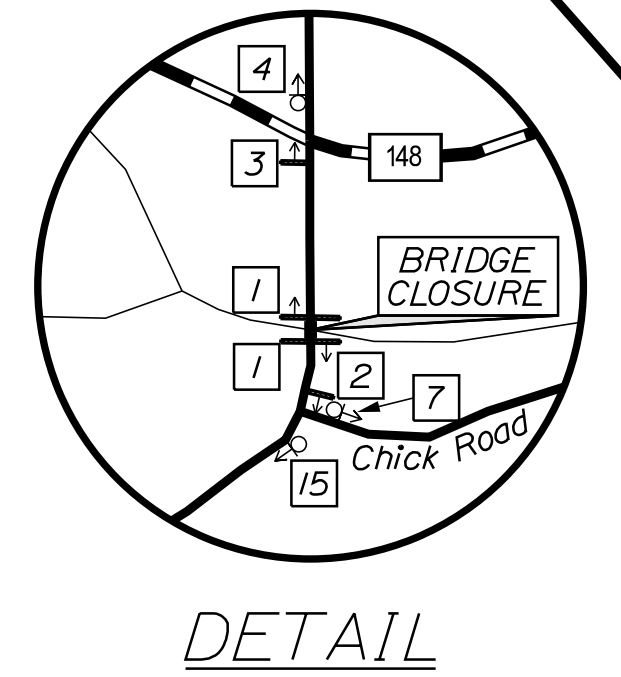
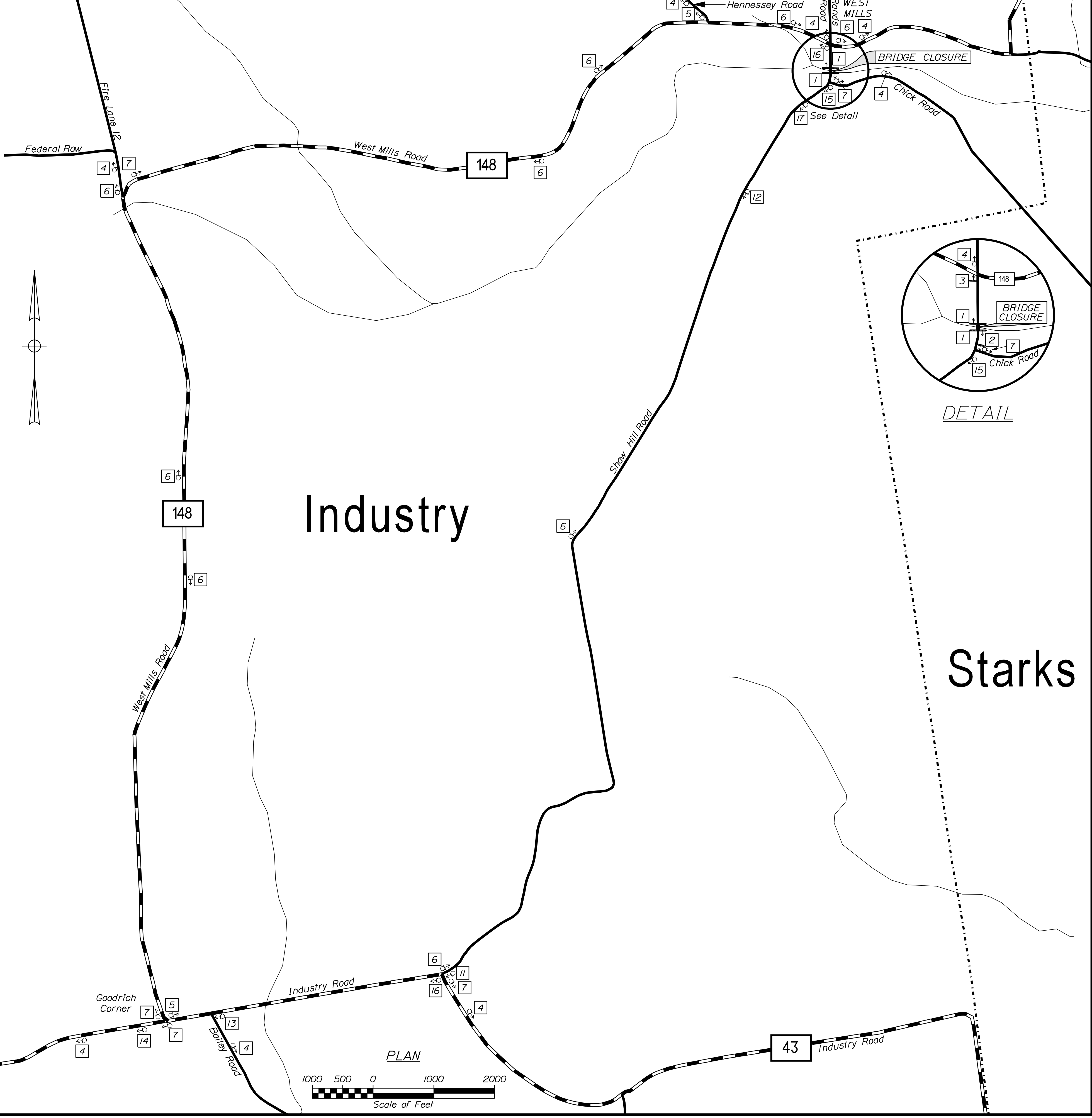
SHAW HILL ROAD  
FRANKLIN COUNTY  
FEDERAL AID PROJECT NO. STP-2169(500)  
D.O.T. FILE NO. 4-272

JUNE 2018  
SCALE 1" = 25'  
RIGHT-OF-WAY MAP  
SHEET 1 OF 1

SHEET NUMBER  
**10**  
OF 11

1		ROAD CLOSED TYPE III BARRICADES
2		ROAD CLOSED 150 FEET AHEAD LOCAL TRAFFIC ONLY TYPE III BARRICADE
3		ROAD CLOSED 350 FEET AHEAD LOCAL TRAFFIC ONLY TYPE III BARRICADE
4		SHAW HILL RD DETOUR AHEAD
5		SHAW HILL RD DETOUR
6		SHAW HILL RD DETOUR
7		SHAW HILL RD DETOUR

11		SHAW HILL RD ROAD CLOSED 3.34 MILES AHEAD LOCAL TRAFFIC ONLY
12		ROAD CLOSED 1000 FT
13		SHAW HILL RD ROAD CLOSED 4.07 MILES AHEAD LOCAL TRAFFIC ONLY
14		SHAW HILL RD ROAD CLOSED 4.30 MILES AHEAD LOCAL TRAFFIC ONLY
15		ROAD CLOSED AHEAD
16		END DETOUR SHAW HILL RD
17		ROAD CLOSED 500 FT



STATE OF MAINE		DEPARTMENT OF TRANSPORTATION	
STP-2169(500)		WIN 21695.00	
BRIDGE NO. 5047		BRIDGE PLANS	
PROJ. MANAGER	M. WIGHT	BY	DATE
DESIGN-DETAILED	B. BARTLETT	D. SHAW	AUG 2018
CHECKED-REVIEWED	B. S. JAVEN	T. WHITE	SEP 2017
DESIGN-DETAILED	B. S. JAVEN	T. WHITE	SEP 2017
REVISIONS 1			
REVISIONS 2			
REVISIONS 3			
REVISIONS 4			
FIELD CHANGES			
SAWYER BRIDGE		FRANKLIN COUNTY	
FALLS BROOK		FRANKLIN COUNTY	
INDUSTRY		DETOUR PLAN	
SHEET NUMBER		11	
		OF 11	