

STATE OF MAINE DEPARTMENT OF TRANSPORTATION



ATHENS-HARTLAND SOMERSET COUNTY CORSON CORNER BRIDGE OVER BLACK STREAM ROUTE 43 / 151 FEDERAL AID PROJECT NO. STP-2081(500) PROJECT LENGTH 0.085 mi. BRIDGE NO. 2135

SPECIFICATIONS

Design: Load and Resistance Factor Design per AASHTO LRFD Bridge Design Specifications, Seventh Edition 2014 with 2016 Interim Revisions.

DESIGN LOADING

Live Load HL - 93 Modified for Strength I

TRAFFIC DATA

Current (2017) AADT	1000
Future (2037) AADT	1200
DHV - % of AADT	10%
Design Hour Volume	120
Heavy Trucks (% of AADT)	17%
Heavy Trucks (% of DHV)	17%
Directional Distribution (% of DHV)	70%
18 kip Equivalent P 2.0	130
18 kip Equivalent P 2.5	124
Posted Speed (mph)	45

HYDROLOGIC DATA

Drainage Area	11.8 sq mi
Design Discharge (Q50)	863.8 cfs
Check Discharge (Q100)	997.9 cfs
Headwater Elevation (Q1.1)	251.3 ft
Headwater Elevation (Q25)	253.8 ft
Headwater Elevation (Q50)	254.3 ft
Headwater Elevation (Q100)	254.8 ft
Discharge Velocity (Q1.1)	5.6 fps
Discharge Velocity (Q50)	8.0 fps
Discharge Velocity (Q100)	8.5 fps

MATERIALS

Concrete:	
Precast	Class "P"
All Other	Class "A"
Reinforcing Steel	ASTM A 615/A 615M, Grade 60
Welded Wire Reinforcement	ASTM A 185/A 185M OR ASTM A 497/A 497M

BASIC DESIGN STRESSES

Precast Concrete	f'c = 5,000 psi
Concrete	f'c = 4,000 psi
Reinforcing Steel	f _y = 60,000 psi

LIST OF DRAWINGS

Title Sheet	1
Estimated Quantities	2
General Plan	3
Profile	4
Boring Location Plan	5
Interpretive Subsurface Profile	6
Boring Logs	7
Cross Sections	8-16
Staged Construction	17
Precast Box Details	18
Right of Way Map	19

UTILITIES

Central Maine Power
Somerset Telephone Co.

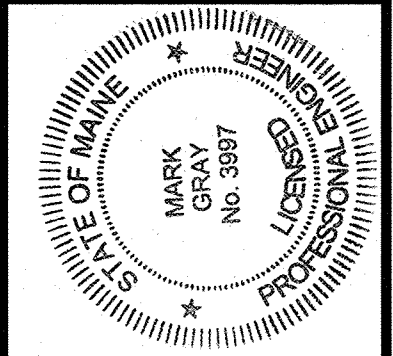
Charter Communication
Hartland & St. Albans Telephone Co.

MAINTENANCE OF TRAFFIC

Maintain one 11'-0" wide lane of traffic using staged construction and temporary traffic signals.

<u>PROJECT LOCATION</u>	Hartland Road aka Route 43 & 151 over Black Stream Lat./Long. 44°53'58.3" N 69°36'11.3" W
<u>PROGRAM AREA</u>	Highway Bridges-Traditional
<u>OUTLINE OF WORK</u>	Bridge Culvert Replacement

STATE OF MAINE
DEPARTMENT OF TRANSPORTATION
APPROVED: *[Signature]*
COMMISSIONER: *[Signature]*
CHIEF ENGINEER: *[Signature]*
DATE: 12/12/17



SIGNATURE: *[Signature]*
P.E. NUMBER: 3997
DATE: 12-5-2017

PROJECT INFORMATION
PROGRAM
PROJECT MANAGER
DESIGNER
CONSULTANT
PROJECT RESIDENT
CONTRACTOR
PROJECT COMPLETION DATE

ATHENS-HARTLAND
CORSON CORNER BRIDGE
TITLE SHEET

SHEET NUMBER
1
OF 19

Filename: \\00\BRIDGE\MSTA\001_Title.dgn
Division: BRIDGE
Username: armond.i.paradis
Date: 12/5/2017

STP-2081(500) WIN020815.00

Date:12/13/2017

Username: armand.i.paradis

Division: BRIDGE

Filename: ... \BRIDGE\WSTA\002_Estimate.dgn

ESTIMATED QUANTITIES			
ITEM NO.	DESCRIPTION	QUANTITY	UNIT
201.23	REMOVING SINGLE TREE TOP ONLY	1	EA
201.24	REMOVING STUMP	1	EA
202.202	REMOVING PAVEMENT SURFACE	270	SY
203.20	COMMON EXCAVATION	527	CY
203.2318	DISPOSAL OF SPECIAL WASTE	600	T
203.24	COMMON BORROW	425	CY
203.25	GRANULAR BORROW	334	CY
203.33	SPECIAL FILL	206	CY
206.061	STRUCTURAL EARTH EXC. - DRAINAGE&MINOR STRUCT. BELOW GRD.	26	CY
304.10	AGGREGATE SUBBASE COURSE - GRAVEL	1104	CY
403.208	HOT MIX ASPHALT 12.5 MM HMA SURFACE	131	T
403.209	HOT MIX ASPHALT 9.5 MM INCIDENTALS	4	T
403.213	HOT MIX ASPHALT 12.5 MM BASE	224	T
409.15	BITUMINOUS TACK COAT - APPLIED	108	G
508.13	SHEET WATERPROOFING MEMBRANE (193 SY)	1	LS
511.07	COFFERDAM:UPSTREAM	1	LS
511.07	COFFERDAM:DOWNSTREAM	1	LS
515.21	PROTECTIVE COATING FOR CONCRETE SURFACES (38 SY)	1	LS
524.301	TEMPORARY STRUCTURAL SUPPORT	1	LS
526.301	TEMPORARY CONCRETE BARRIER,TYPE I (110 LF)	1	LS
526.305	TEMPORARY CONCRETE BARRIER,BRACED TYPE I (110 LF)	1	LS
527.34	WORK ZONE CRASH CUSHIONS	2	UN
534.71	PRECAST CONCRETE BOX CULVERT (247 CY)	1	LS
603.19	24" CULVERT PIPE OPTION 1	11	LF
606.23	GUARDRAIL TYPE 3C - SINGLE RAIL	237.5	LF
606.232	GUARDRAIL TYPE 3C - OVER 15' RADIUS	87.5	LF
606.265	TERMINAL END - SINGLE RAIL - GALVANIZED STEEL	3	EA
606.353	REFLECTORIZED FLEXIBLE GUARDRAIL MARKER	8	EA
606.79	GUARDRAIL 350 FLARED TERMINAL	1	EA
610.08	PLAIN RIPRAP	330	CY
615.07	LOAM	54	CY
618.14	SEEDING METHOD NUMBER 2	9	UN
619.12	MULCH	9	UN
619.14	EROSION CONTROL MIX	108	CY
620.58	EROSION CONTROL GEOTEXTILE	429	SY
627.18	12" SOLID WHITE PAVEMENT MARKING LINE	22	LF
627.733	4" WHITE OR YELLOW PAINTED PAVEMENT MARKING LINE	1425	LF
627.77	REMOVING PAVEMENT MARKINGS	200	SF
627.78	TEMP, 4" PAINTED PAVEMENT MARKING LINE,WHITE OR YELLOW	600	LF
627.811	TEMPORARY BI-DIRECTIONAL YELLOW DELINEATORS	50	EA
627.812	TEMP,BI-DIRECTIONAL WHITE DELINEATORS	100	EA
629.05	HAND LABOR, STRAIGHT TIME	100	HR
631.12	ALL PURPOSE EXCAVATOR (INCLUDING OPERATOR)	10	HR
631.171	TRUCK - SMALL (INCLUDING OPERATOR)	10	HR
639.19	FIELD OFFICE TYPE B	1	EA
643.72	TEMPORARY TRAFFIC SIGNAL AT:RTE. 43 & CORSON CORNER BRG.	1	LS
652.312	TYPE III BARRICADE	2	EA
652.33	DRUM	50	EA
652.34	CONE	100	EA
652.35	CONSTRUCTION SIGNS	400	SF
652.361	MAINTENANCE OF TRAFFIC CONTROL DEVICES (60 CD)	1	LS
652.38	FLAGGER	200	HR
656.75	TEMPORARY SOIL EROSION AND WATER POLLUTION CONTROL	1	LS
659.10	MOBILIZATION	1	LS

GENERAL CONSTRUCTION NOTES

- For easements, construction limits and right of way lines, refer to Right of Way Map.
- The clearing limits as shown on the plans are approximate. The exact limits will be established in the field by the Resident. Payment for clearing will be considered incidental to Contract items.
- All utility facilities shall be adjusted by the respective utilities unless otherwise noted.
- In areas where the Resident directs the Contractor not to excavate to the subgrade line shown on the plans, payment for removing existing pavement, grubbing, shaping, ditching, and compacting the existing subbase and layers of new subbase 6 inches or less thick will be made under appropriate equipment rental items.
- Stones which cannot be rolled or compacted into the surface of the shoulder shall be removed by hand raking. Payment for hand raking will be considered incidental to Item No. 304.10, Aggregate Subbase Course - Gravel.
- Place loam 2 inches deep on all new or reconstructed sideslopes or as directed by the Resident.
- Erosion Control Mix may be substituted in those areas normally receiving loam and seed as directed by the Resident. Placement shall be in accordance with Standard Specifications Section 619, Mulch. Payment will be made under Item No. 619.14, Erosion Control Mix.
- Place a 24-in. wide strip of Temporary Erosion Control Blanket on the sideslopes along the top of the bank at the outside edge of the shoulder. Payment incidental to other items.
- An NCHRP350 compliant guardrail end treatment shall be installed concurrently with the placement of each section of beam guardrail where shown on the plans.
- Extended-use Erosion Control Blanket, seeded gutters, riprap downspouts, and other gutters lined with Stone Ditch Protection shall be constructed after paving and shoulder work is completed, where it is apparent that runoff will cause continual erosion. Payment will be made under the appropriate Contract items.
- Protective Coating for Concrete Surfaces shall be applied to the following areas:

On all concrete headwalls and box wall surfaces that are exposed and to limit lines, one foot beyond intersections of concrete surfaces with the ground.
- Project information referred to below may be accessed at the following MaineDOT web address: <http://www.maine.gov/mdot/contractors/>.
- The existing bridge plans may be accessed at the MaineDOT web address. The plans are reproductions of the original drawings as prepared for the construction of the bridge. It is very unlikely that the plans will show any construction field changes or any alterations which may have been made to the bridge during its life span.
- The hydrology and hydraulic reports of the bridge site may be accessed at the MaineDOT web address. The hydrologic report is based on MaineDOT's interpretation of the information obtained for the subject site. No assurance is given that the information or the conclusions of the report will be representative of actual conditions at the time of construction.
- The project geotechnical report titled: GEOTECHNICAL DESIGN REPORT For the Replacement of CORSON CORNER BRIDGE, STATE ROUTES 43/151 OVER BLACK STREAM, ATHENS-HARTLAND, MAINE, Soils Report 2017-47, October 5, 2017 may be accessed at the MaineDOT web address.

16. Geotechnical information furnished or referred to in this plan set is for the use of the Bidders and the Contractor. No assurance is given that the information or interpretations will be representative of actual subsurface conditions at the construction site. MaineDOT will not be responsible for the Bidders' or Contractor's interpretations of, or conclusions drawn from, the geotechnical information. The boring logs contained in the plan set present factual and interpretive subsurface information collected at discrete locations. Data provided may not be representative of the subsurface conditions between the boring locations.

17. Quantities included for pay items measured and paid for by Lump Sum are estimated quantities and are provided by MaineDOT for informational purposes only. Lump Sum pay items will be paid for at the Contract Bid amount, with no addition or reduction in payment to the Contractor if the actual final quantities are different from the MaineDOT provided estimated quantities, except as follows:

a. If a Lump Sum pay item is eliminated, the requirements of Standard Specifications Section 109.2, Elimination of Items, will take precedence.

b. If other Contract Documents specifically allow a change in payment for a Lump Sum pay item, those requirements will be followed.

c. If a design change results in changes to estimated quantities for Lump Sum pay items, price adjustments will be made in accordance with Standard Specifications Section 109.7, Equitable Adjustments to Compensation.

18. The Contractor shall submit a Staged Construction Plan to the Resident at least 10 business days prior to the start of demolition work. The plan shall outline the geometry, materials and construction elements proposed to provide one-way passage for traffic. No work related to the removal of the bridge or closing of a lane shall be undertaken by the Contractor until MaineDOT has reviewed the Staged Construction Plan for appropriateness and completeness. Payment for all work necessary for developing, submitting and finalizing the Plan will be considered incidental to other pay items.

19. Bidders and contractors should anticipate encountering boulders and cobbles in the excavations for the proposed box culvert.

20. Any existing cobbles or boulders greater than 12" in diameter protruding into the 12" thick bedding layer under the box shall be removed and backfilled with compacted granular borrow.

21. One 5-foot section of hollow-stem auger was abandoned in boring BB-AHBS-201A. The contractor should anticipate encountering this obstruction during construction. Removal and disposal of this relic will be incidental to other bid items.

22. All embankment materials except as otherwise shown, shall meet the requirements of Subsection 703.19, Material for Underwater Backfill.

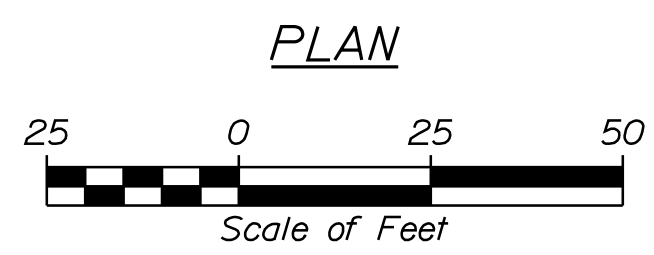
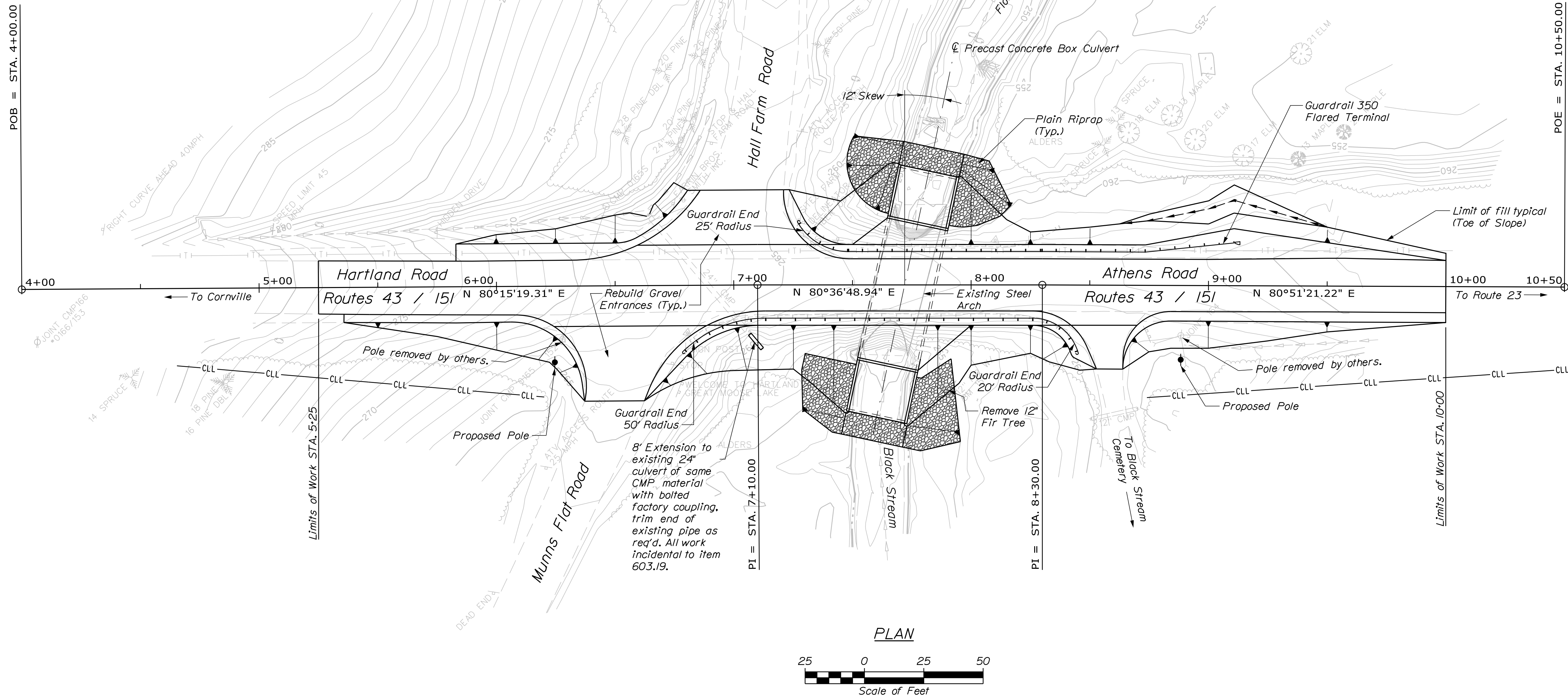
STATE OF MAINE
DEPARTMENT OF TRANSPORTATION
STP-2081(500)
WIN
020815.00
BRIDGE NO. 2135
BRIDGE PLANS

DATE
BY
PROJ. MANAGER
DESIGN-DETAILED
CHECKED-REVIEWED
DESIGNS-DETAILED
REVISIONS 1
REVISIONS 2
REVISIONS 3
REVISIONS 4
FIELD CHANGES

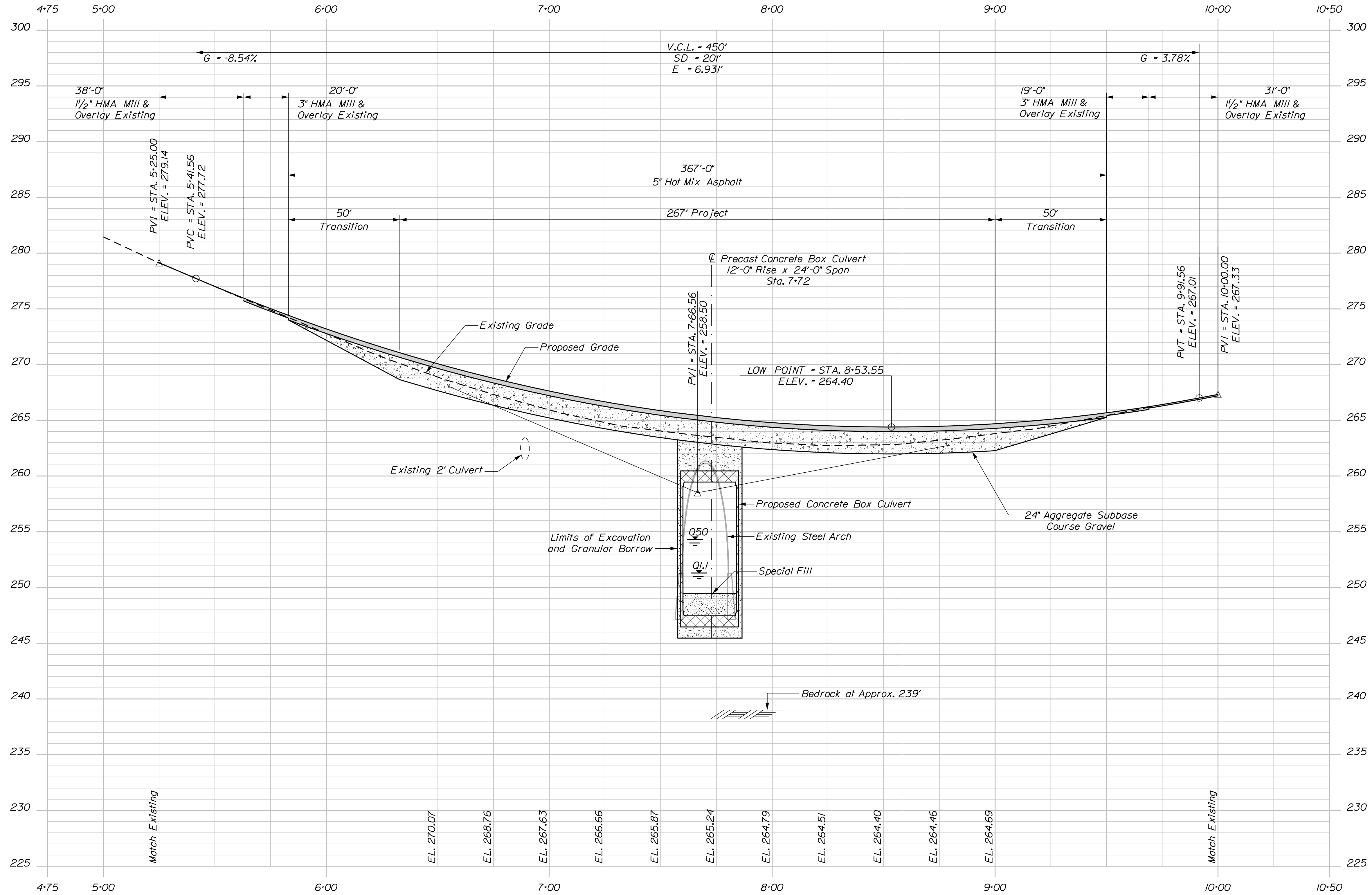
DATE
SIGNATURE
P.E. NUMBER
DATE

CORSON CORNER BRIDGE
BLACK STREAM
ATHENS-HARTLAND SOMERSET COUNTY
ESTIMATED QUANTITIES

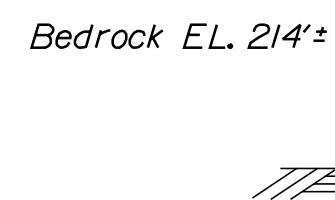
SHEET NUMBER
2
OF 19

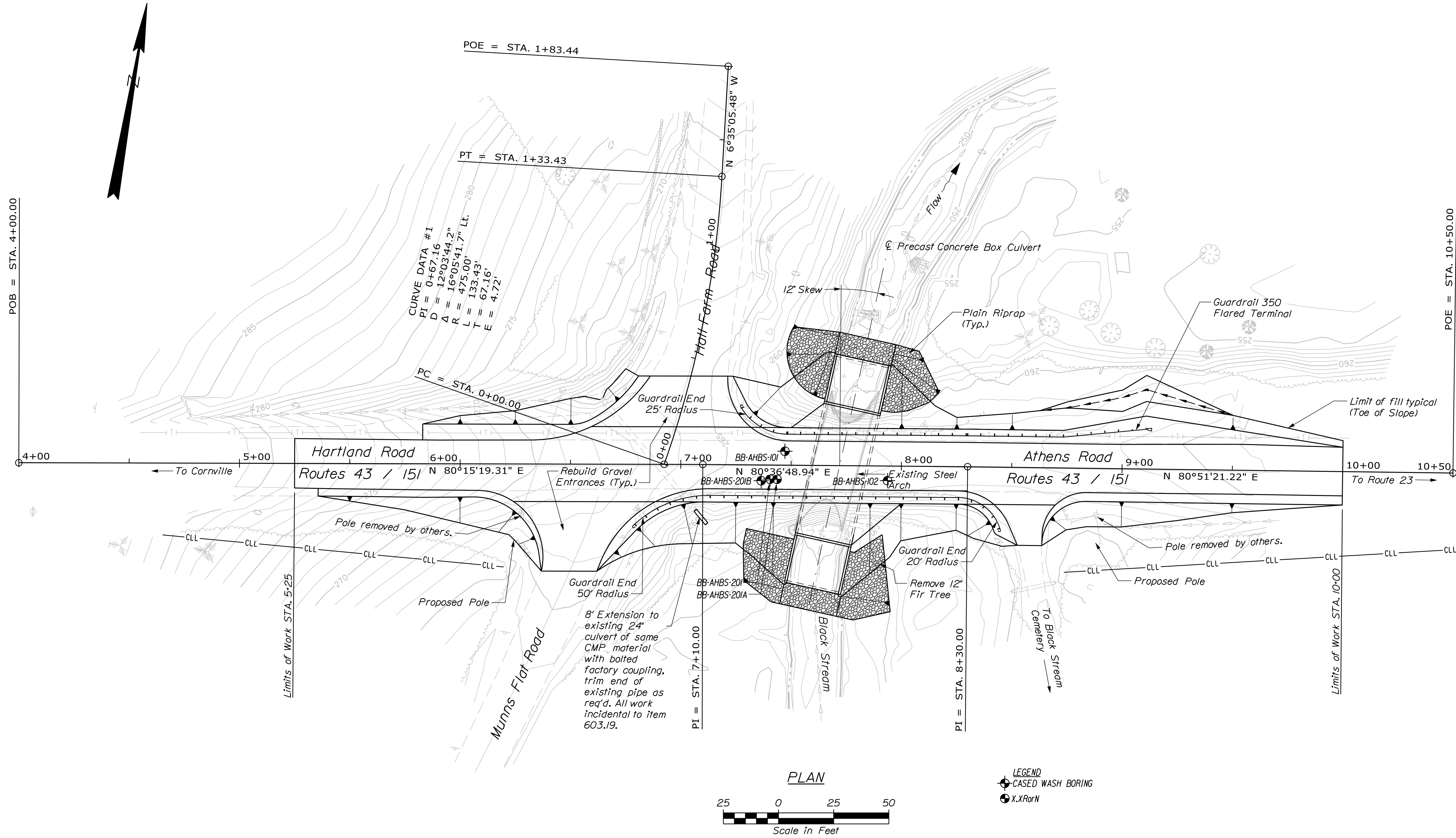


STATE OF MAINE		DEPARTMENT OF TRANSPORTATION	
CORSON CORNER BRIDGE		STP-2081(500)	
BLACK STREAM		WIN	
ATHENS-HARTLAND SOMERSET COUNTY		020815.00	
GENERAL PLAN		BRIDGE NO. 2135	
SHEET NUMBER		BRIDGE PLANS	
3		020815.00	
OF 19		DATE	
PROJ. MANAGER	MARK GRAY	DESIGN/DATE	NOV 2017
CHECKED/REVIEWED	B. NICHOLS	DESIGN/DATE	DEC 2017
DESIGNED/DATE	B.S. JAVEN	DESIGN/DATE	JUL 2017
REVISIONS 1		P.E. NUMBER	
REVISIONS 2		DATE	
REVISIONS 3			
REVISIONS 4			
FIELD CHANGES			

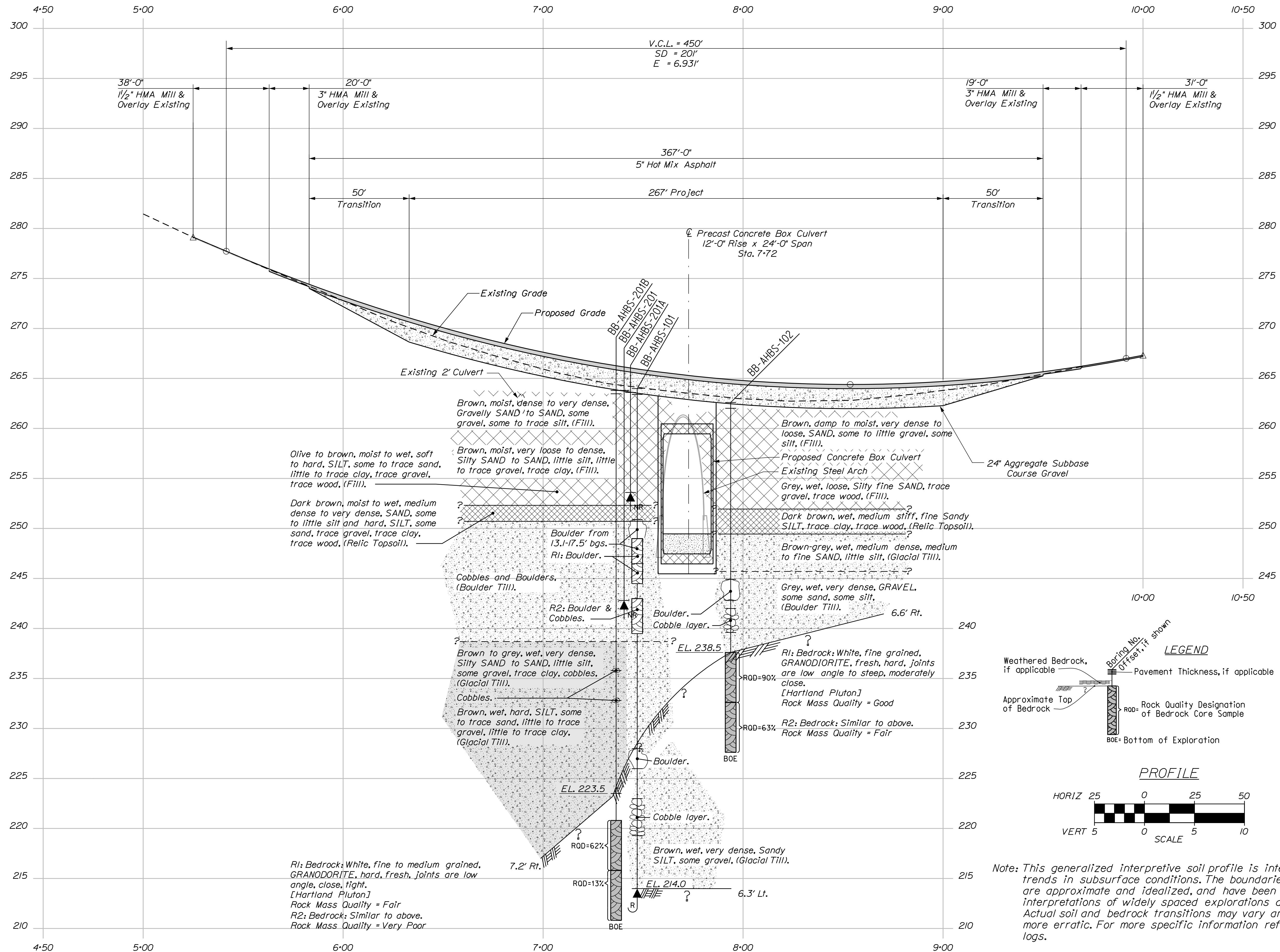


PROFILE





STATE OF MAINE DEPARTMENT OF TRANSPORTATION		STP-2081(500)	
CORSON CORNER BRIDGE BLACK STREAM ATHENS-HARTLAND SOMERSET COUNTY		BORING LOCATION PLAN	
SHEET NUMBER		5	
BRIDGE NO. 2135		WIN 020815.00	
BRIDGE PLANS		DATE	
PROJ. MANAGER	BY	DATE	SIGNATURE
DESIGN DETAILED: MARK GRAY	W. ROHMAN		
CHECKED-REVIEWED: B.S. JAVEN	T. WHITE	JUL 2017	
DESIGN DETAILED:			P.E. NUMBER
REVISIONS 1:			DATE
REVISIONS 2:			
REVISIONS 3:			
REVISIONS 4:			
FIELD CHANGES:			



LEGEND

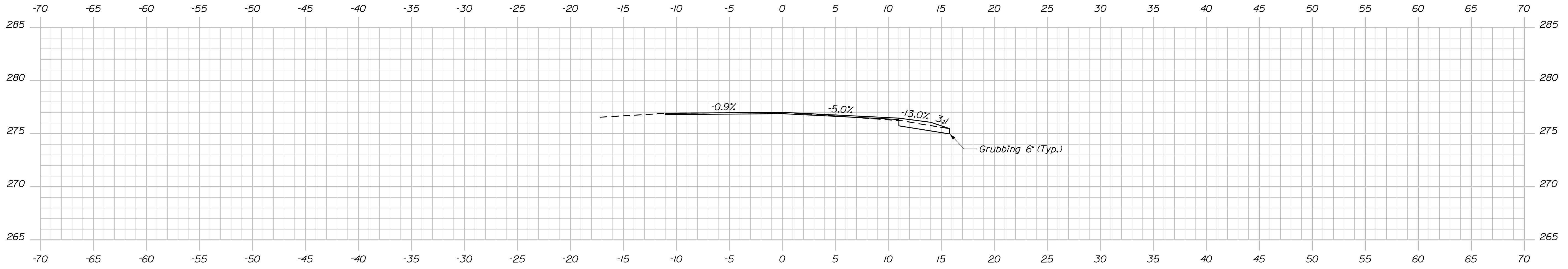
- Weathered Bedrock, if applicable
- Approximate Top of Bedrock
- Boring No. / Offset / Depth shown
- Pavement Thickness, if applicable
- ROD = Rock Quality Designation of Bedrock Core Sample
- BOE = Bottom of Exploration
- No Refusal (NR)
- Refusal (R)

PROFILE SCALE

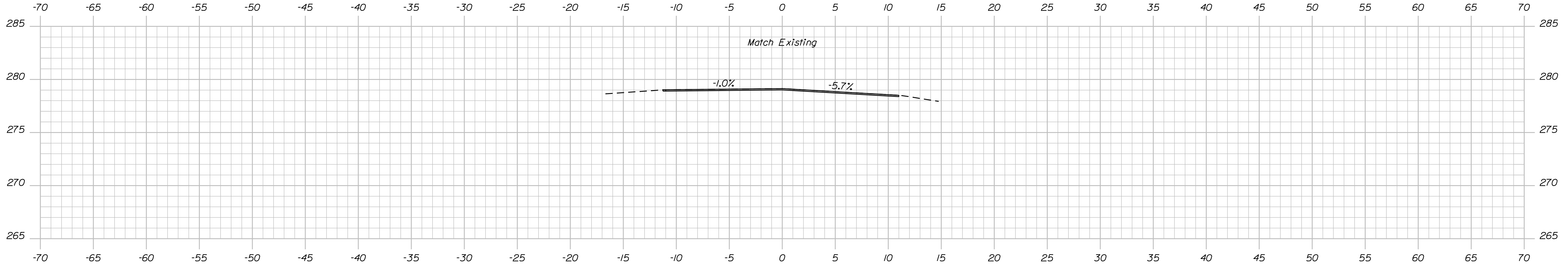
HORIZ: 25 0 25 50
 VERT: 5 0 5 10

Note: This generalized interpretive soil profile is intended to convey trends in subsurface conditions. The boundaries between strata are approximate and idealized, and have been developed by interpretations of widely spaced explorations and samples. Actual soil and bedrock transitions may vary and are probably more erratic. For more specific information refer to the exploration logs.

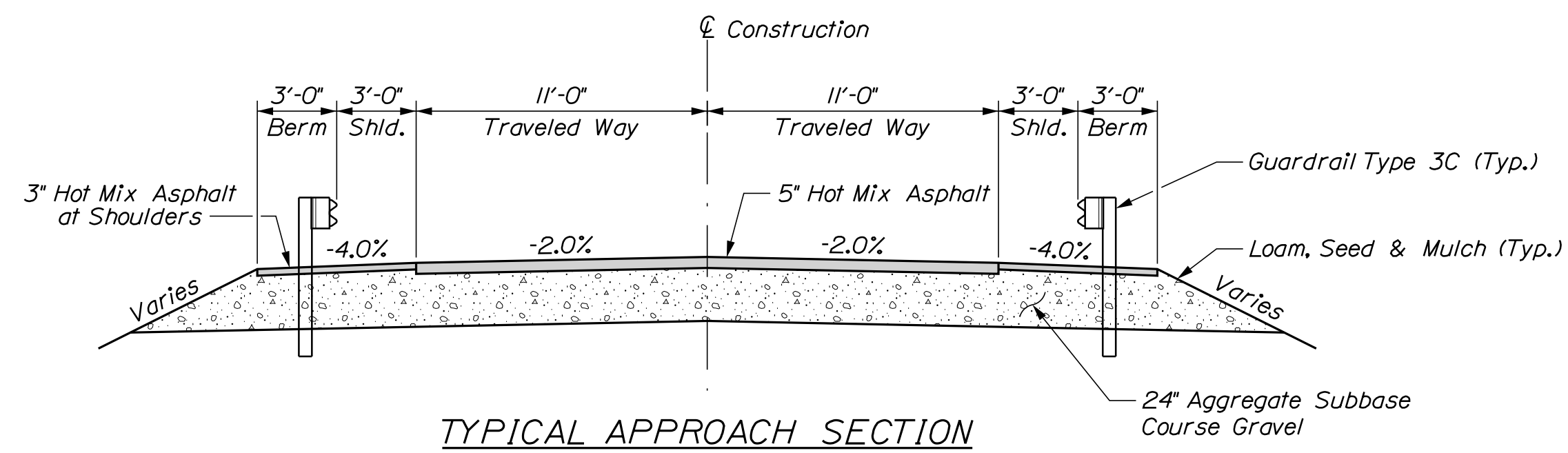
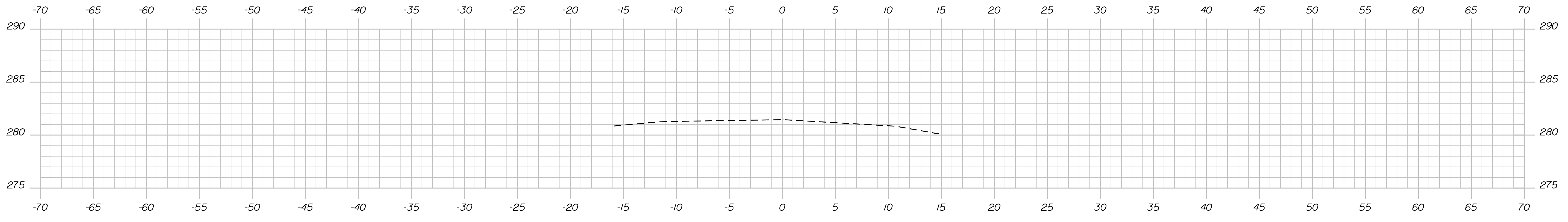
STATE OF MAINE		DEPARTMENT OF TRANSPORTATION	
CORSON CORNER BRIDGE		ATHENS-HARTLAND SOMERSET COUNTY	
BLACK STREAM		INTERPRETIVE SUBSURFACE PROFILE	
STP-2081(500)		SHEET NUMBER	
WIN		6	
020815.00		OF 19	
BRIDGE NO. 2135		BRIDGE PLANS	
PROJ. MANAGER	DATE	BY	DATE
CHECKED/REVIEWED			
DESIGN DETAILED	T. WHITE	SIGNATURE	JUL 2017
DESIGN DETAILED	B. SJAVEN	P.E. NUMBER	
DESIGN DETAILED		DATE	
REVISIONS 1			
REVISIONS 2			
REVISIONS 3			
REVISIONS 4			
FIELD CHANGES			



5+50.00
 End Mill and Fill Overlay 1.5" Thick
 Begin Mill and Fill Overlay 3" Thick at 5+63.00



5+25.00
 Begin Mill and Fill Overlay 1.5" Thick



STATE OF MAINE
 DEPARTMENT OF TRANSPORTATION
STP-2081(500)
 WIN
 020815.00
 BRIDGE NO. 2135
 BRIDGE PLANS

PROJ. MANAGER	BY	DATE
DESIGN-DETAILED MARK GRAY	W. ROHMAN	NOV. 2017
CHECKED-REVIEWED B. NICHOLS	M. WIGHT	DEC. 2017
DESIGN-DETAILED B. SLAVEN	T. WHITE	JUL. 2017
REVISIONS 1		
REVISIONS 2		
REVISIONS 3		
REVISIONS 4		
FIELD CHANGES		

SIGNATURE	P.E. NUMBER	DATE

CORSON CORNER BRIDGE
 BLACK STREAM
 ATHENS-HARTLAND SOMERSET COUNTY
CROSS SECTIONS

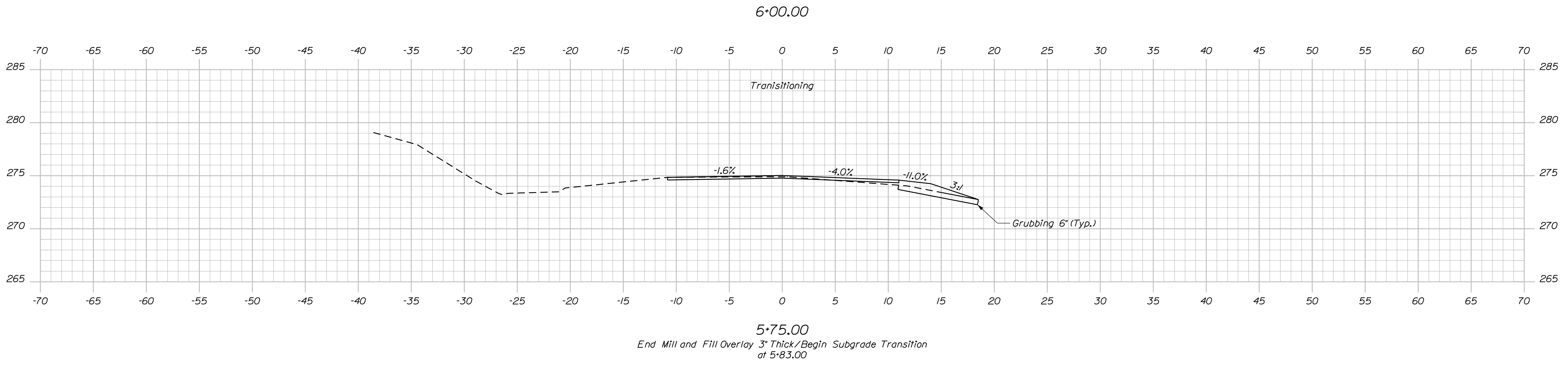
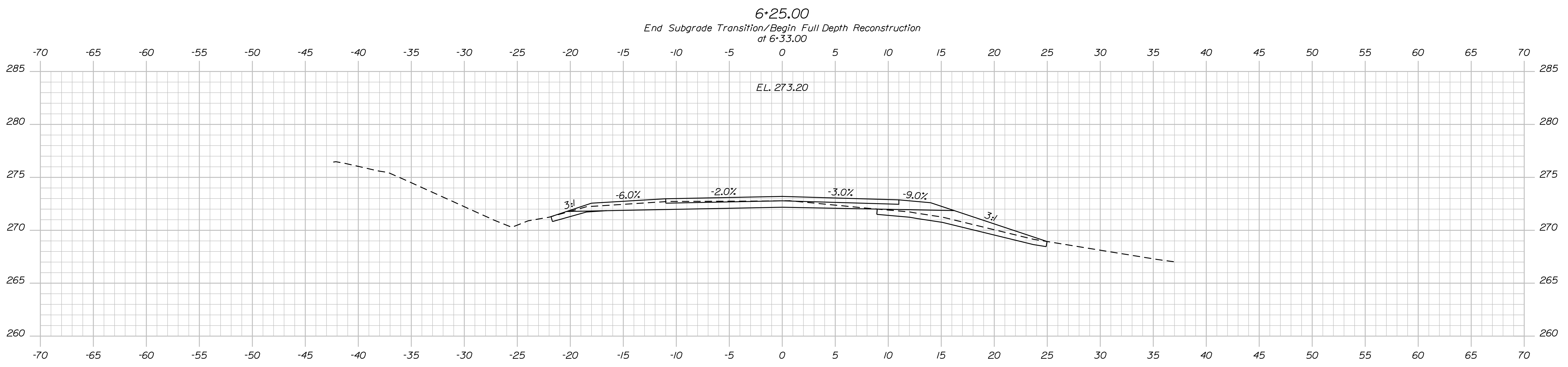
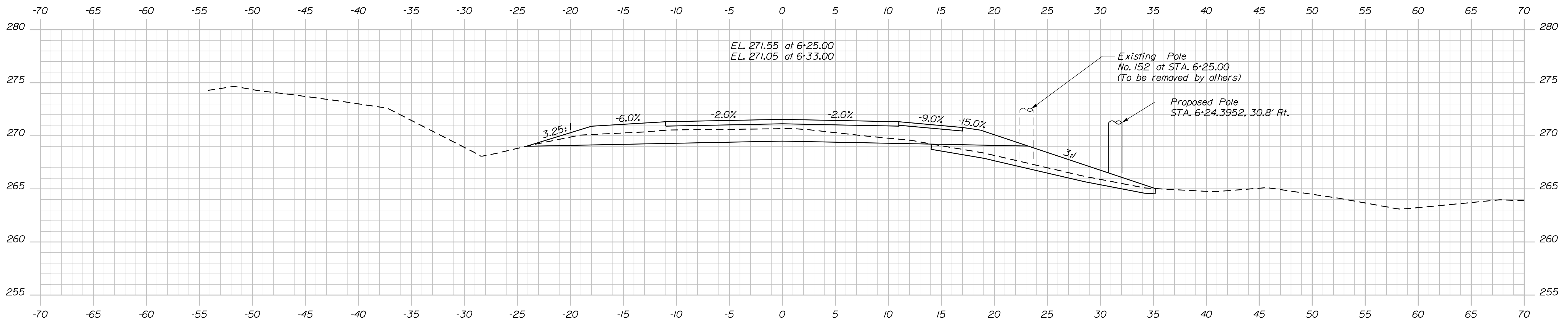
SHEET NUMBER
8
 OF 19

Date: 12/13/2017

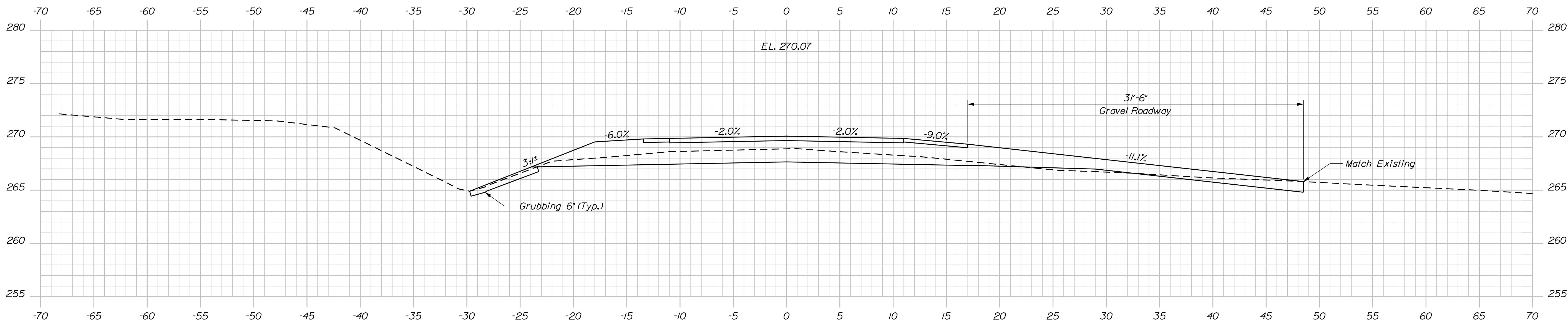
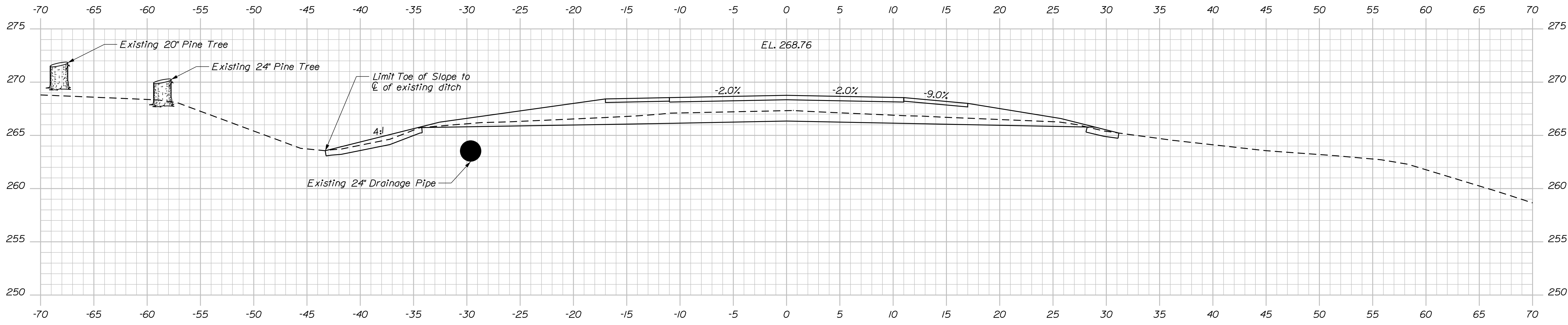
Username: armand.i.paradis

Division: BRIDGE

Filename: ... \009_XSECT_5*75 to 6*25.dgn



STATE OF MAINE DEPARTMENT OF TRANSPORTATION		STP-2081(500)		BRIDGE NO. 2135		WIN		020815.00		BRIDGE PLANS	
CORSON CORNER BRIDGE BLACK STREAM ATHENS-HARTLAND SOMERSET COUNTY		CROSS SECTIONS		SHEET NUMBER		9		OF 19			
PROJ. MANAGER	MARK GRAY	DESIGN-DETAILED	W. ROHMAN	DATE	NOV 2017	BY	W. ROHMAN	DATE	NOV 2017	SIGNATURE	
CHECKED-REVIEWED	B. NICHOLS	CHECKED-REVIEWED	M. WIGHT	DATE	DEC 2017	BY	M. WIGHT	DATE	DEC 2017	SIGNATURE	
DESIGN-DETAILED	B. SLAVEN	DESIGN-DETAILED	T. WHITE	DATE	JUL 2017	BY	T. WHITE	DATE	JUL 2017	SIGNATURE	
REVISIONS 1		REVISIONS 1				REVISIONS 1				P.E. NUMBER	
REVISIONS 2		REVISIONS 2				REVISIONS 2				DATE	
REVISIONS 3		REVISIONS 3				REVISIONS 3					
REVISIONS 4		REVISIONS 4				REVISIONS 4					
FIELD CHANGES											



STATE OF MAINE
DEPARTMENT OF TRANSPORTATION
STP-2081(500)

PROJ. MANAGER	BY	DATE	SIGNATURE
MARK GRAY	W. ROHMAN	NOV 2017	
CHECKED-REVIEWED	M. WIGHT	DEC 2017	
DESIGN DETAILER	T. WHITE	JUL 2017	
DESIGN DETAILER	B. SLAVEN		
REVISIONS 1			
REVISIONS 2			
REVISIONS 3			
REVISIONS 4			
FIELD CHANGES			

PROJ. MANAGER	BY	DATE	SIGNATURE

CORSON CORNER BRIDGE
BLACK STREAM
ATHENS-HARTLAND SOMERSET COUNTY
CROSS SECTIONS

SHEET NUMBER
10
OF 19

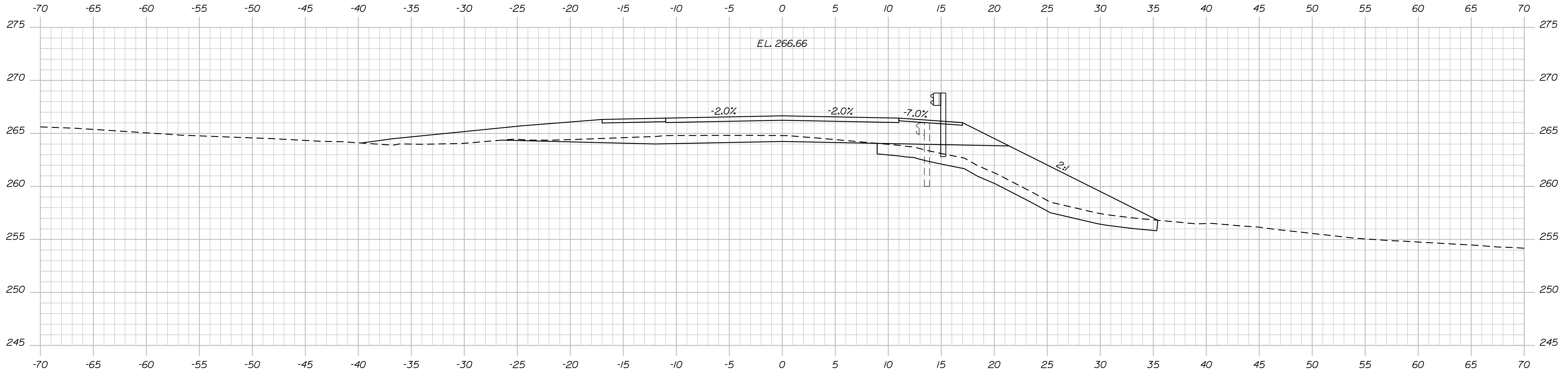
BRIDGE NO. 2135
WIN
020815.00
BRIDGE PLANS

Date: 12/13/2017

Username: armand.i.paradis

Division: BRIDGE

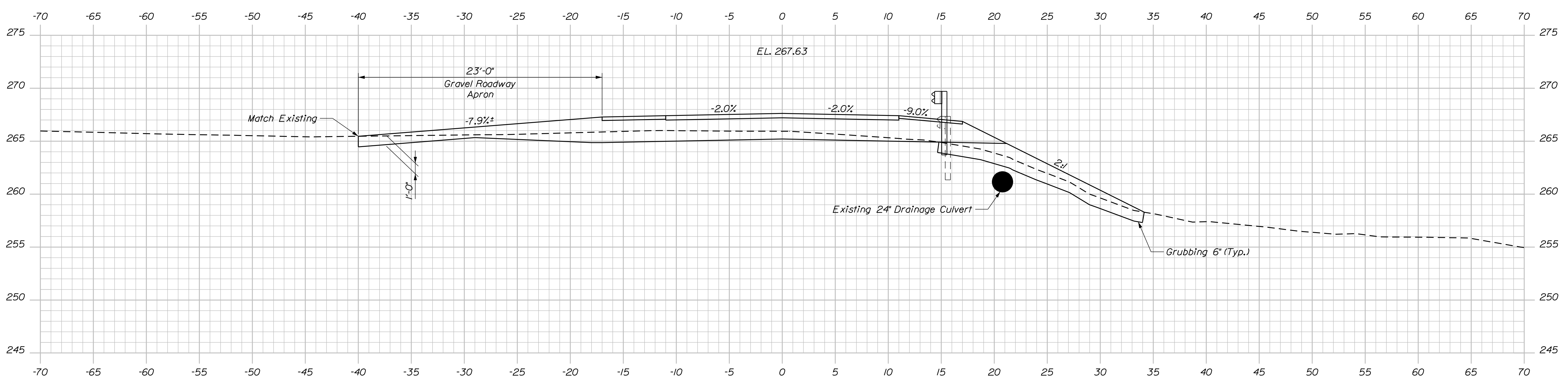
Filename: ... \011_XSECT_7+00 to 7+25.dgn



Sta. 7+27.36, 25.5975 ft. Lt. to Sta. 7+49.46, 14.00 ft. Lt.
 Install 25 ft. Radius Terminal End Lt.

7+25.00

Sta. 7+13.25 to Sta. 8+25.8333, 14.00 ft. Rt.
 Install 112.5 ft. of Guardrail Type 3c.



Sta. 6+79.1761, 27.1383 ft. Rt. to Sta. 7+13.25, 14.00 ft. Rt.
 Install 50 ft. Radius End Rt.

7+00.00

STATE OF MAINE
 DEPARTMENT OF TRANSPORTATION
 STP-2081(500)

BRIDGE NO. 2135
 WIN
 020815.00
 BRIDGE PLANS

PROJ. MANAGER	BY	DATE
MARK GRAY	W. ROHMAN	NOV 2017
CHECKED-REVIEWED	M. WRIGHT	DEC 2017
DESIGN-REVIEWED	T. WHITE	JUL 2017
DESIGN-REVIEWED	B. SLAVEN	
REVISIONS 1		
REVISIONS 2		
REVISIONS 3		
REVISIONS 4		
FIELD CHANGES		

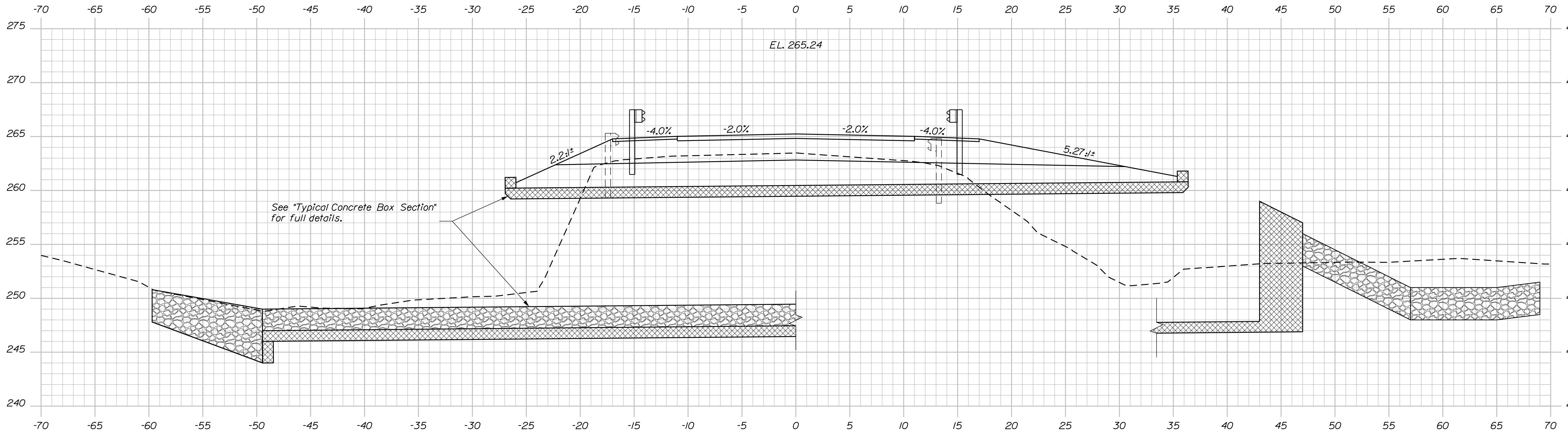
CORSON CORNER BRIDGE
 BLACK STREAM
 ATHENS-HARTLAND SOMERSET COUNTY
 CROSS SECTIONS

SHEET NUMBER
 11
 OF 19

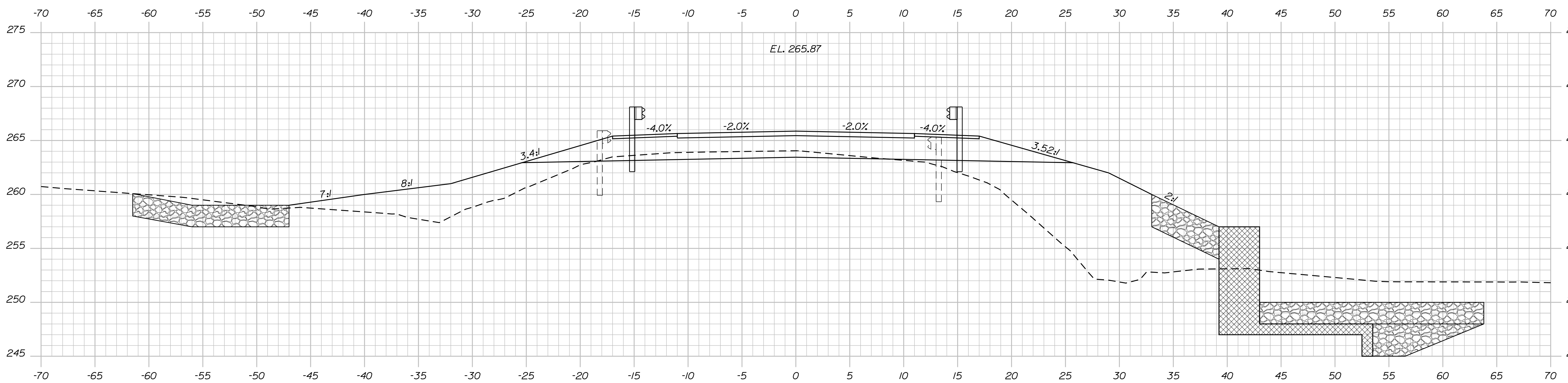
Username: armand.i.paradis Date:12/13/2017

Division: BRIDGE

Filename: ... \012_XSECT_7+50 to 7+75.dgn



7+75.00



7+50.00

Sta. 7+49.46 to Sta. 8+73.40, 14.00 ft. Lt.
Install 125.00 ft. of Guardrail Type 3c.

STATE OF MAINE
DEPARTMENT OF TRANSPORTATION
STP-2081(500)

BRIDGE NO. 2135
WIN
020815.00
BRIDGE PLANS

PROJ. MANAGER	BY	DATE
DESIGN DETAILED: MARK GRAY	W. ROHMAN	NOV 2017
CHECKED-REVIEWED: B. NICHOLS	M. WIGHT	DEC 2017
DESIGN DETAILED: B. SLAVEN	T. WHITE	JUL 2017
REVISIONS 1		
REVISIONS 2		
REVISIONS 3		
REVISIONS 4		
FIELD CHANGES		

CORSON CORNER BRIDGE
BLACK STREAM
ATHENS-HARTLAND SOMERSET COUNTY
CROSS SECTIONS

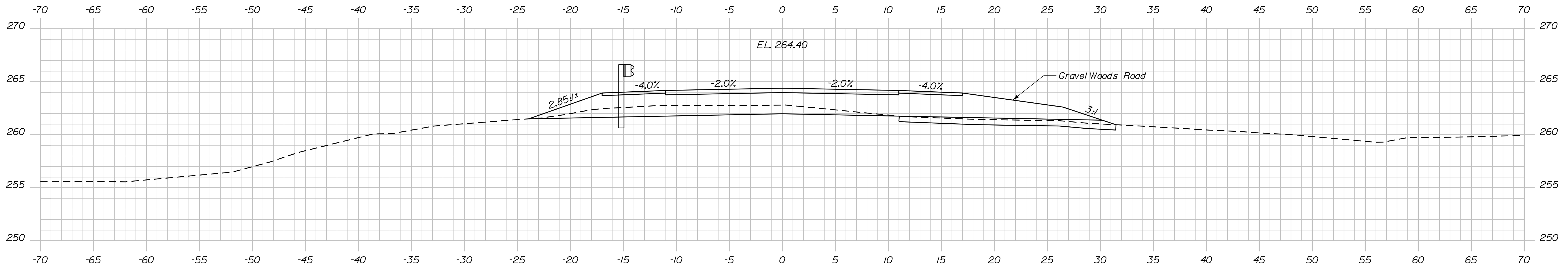
SHEET NUMBER
12
OF 19

Date: 12/13/2017

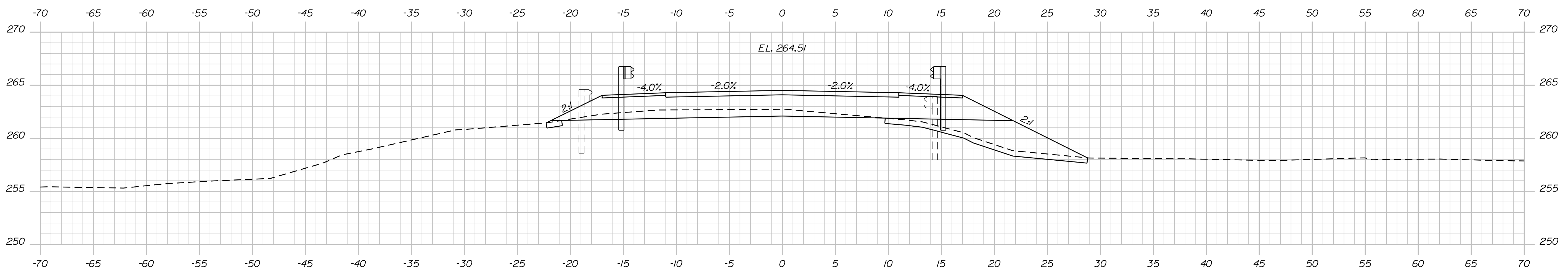
Username: armand.i.paradis

Division: BRIDGE

Filename: ... \013_XSECT_8+00 to 8+50.dgn

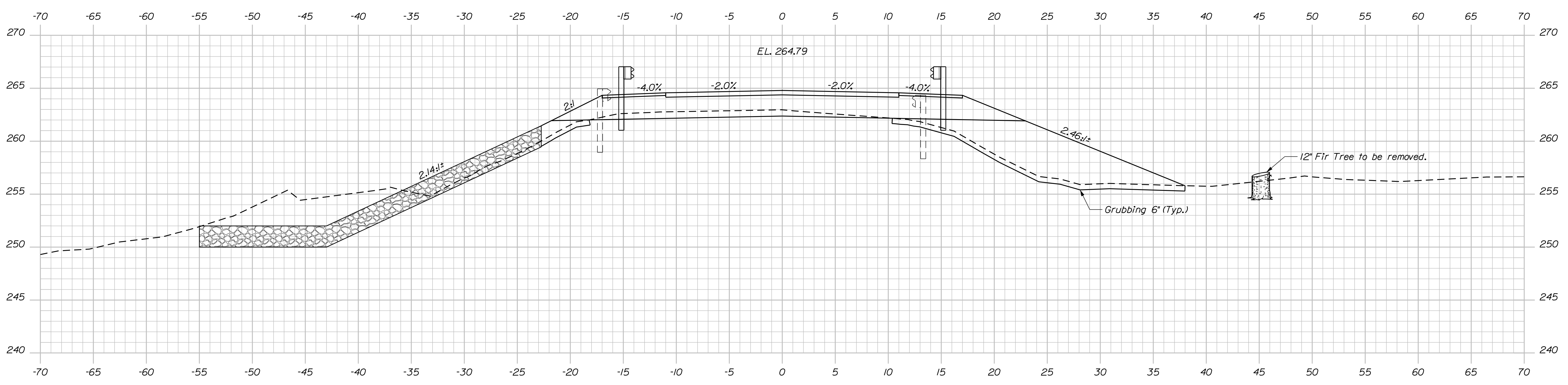


8+50.00



8+25.00

Sta. 8+25.96, 14.00 ft. Rt. to Sta. 8+45.00, 27.75 ft. Rt.
Install 20 ft. Radius End Rt.



8+00.00

STATE OF MAINE
DEPARTMENT OF TRANSPORTATION
STP-2081(500)
WIN
020815.00
BRIDGE NO. 2135
BRIDGE PLANS

PROJ. MANAGER	BY	DATE	SIGNATURE	P.E. NUMBER	DATE
DESIGN DETAILED: MARK GRAY	W. ROHMAN	NOV 2017			
CHECKED/REVIEWED: B. NICHOLS	M. WRIGHT	DEC 2017			
DESIGN DETAILED: B. SLAVEN	T. WHITE	JUL 2017			
REVISIONS 1					
REVISIONS 2					
REVISIONS 3					
REVISIONS 4					
FIELD CHANGES					

PROJ. MANAGER	BY	DATE	SIGNATURE	P.E. NUMBER	DATE
DESIGN DETAILED: MARK GRAY	W. ROHMAN	NOV 2017			
CHECKED/REVIEWED: B. NICHOLS	M. WRIGHT	DEC 2017			
DESIGN DETAILED: B. SLAVEN	T. WHITE	JUL 2017			
REVISIONS 1					
REVISIONS 2					
REVISIONS 3					
REVISIONS 4					
FIELD CHANGES					

CORSON CORNER BRIDGE
BLACK STREAM
ATHENS-HARTLAND SOMERSET COUNTY
CROSS SECTIONS

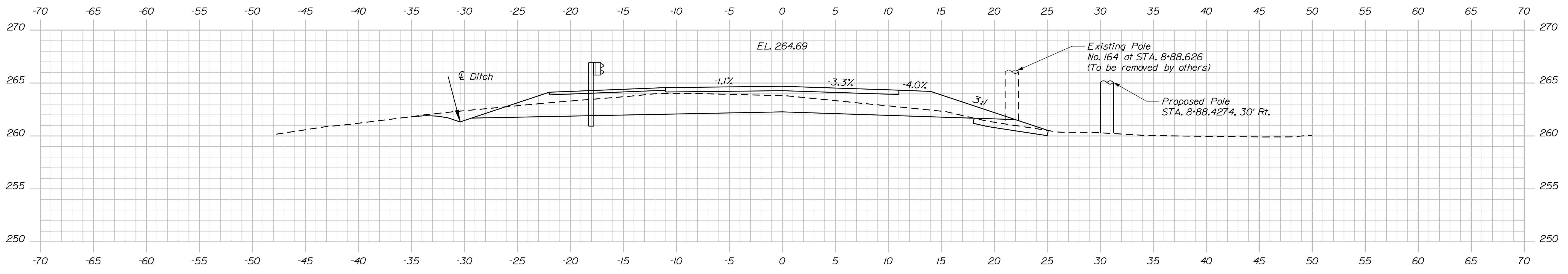
SHEET NUMBER
13
OF 19

Date: 12/13/2017

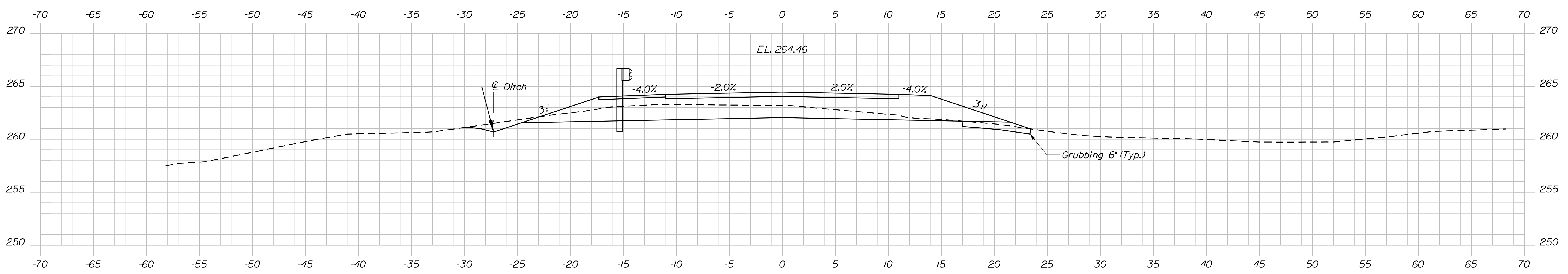
Username: armand.i.paradis

Division: BRIDGE

Filename: ... \014_XSECT_8+58 to 9+00.dgn

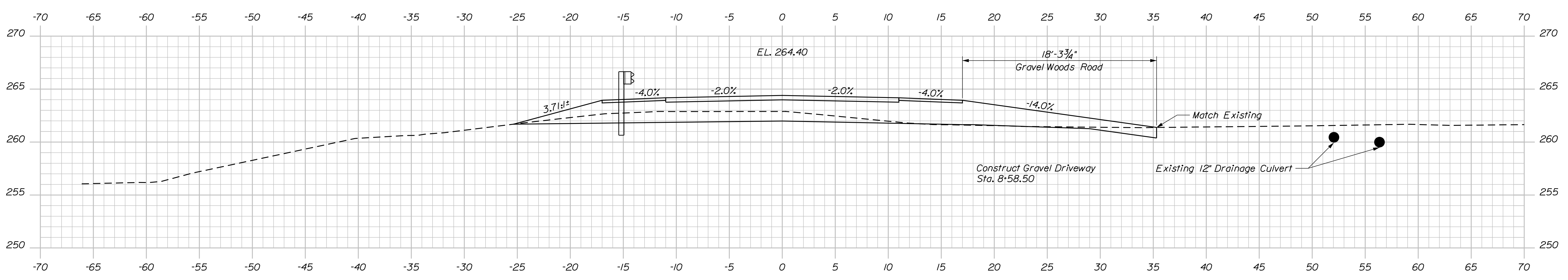


9+00.00
End Project/Begin Transition



Sta. 8+73.4, 14.00 ft. Lt. to Sta. 9+13.20, 17.30 ft. Lt.
Install 350 Flared Terminal End Lt.

8+75.00



8+58.50

STATE OF MAINE
DEPARTMENT OF TRANSPORTATION
STP-2081(500)
WIN
020815.00
BRIDGE NO. 2135
BRIDGE PLANS

DESIGNED	MARK GRAY	DATE	NOV 2017
CHECKED	W. ROHMAN	DATE	DEC 2017
DESIGNED	B. NICHOLS	DATE	JUL 2017
DESIGNED	B. SLAVEN	DATE	
REVISIONS		DATE	
REVISIONS		DATE	
REVISIONS		DATE	
REVISIONS		DATE	
FIELD CHANGES		DATE	

PROJ. MANAGER	BY	DATE
DESIGNED	MARK GRAY	NOV 2017
CHECKED	W. ROHMAN	DEC 2017
DESIGNED	B. NICHOLS	JUL 2017
DESIGNED	B. SLAVEN	
REVISIONS		
REVISIONS		
REVISIONS		
REVISIONS		
FIELD CHANGES		

CORSON CORNER BRIDGE
BLACK STREAM
ATHENS-HARTLAND SOMERSET COUNTY
CROSS SECTIONS

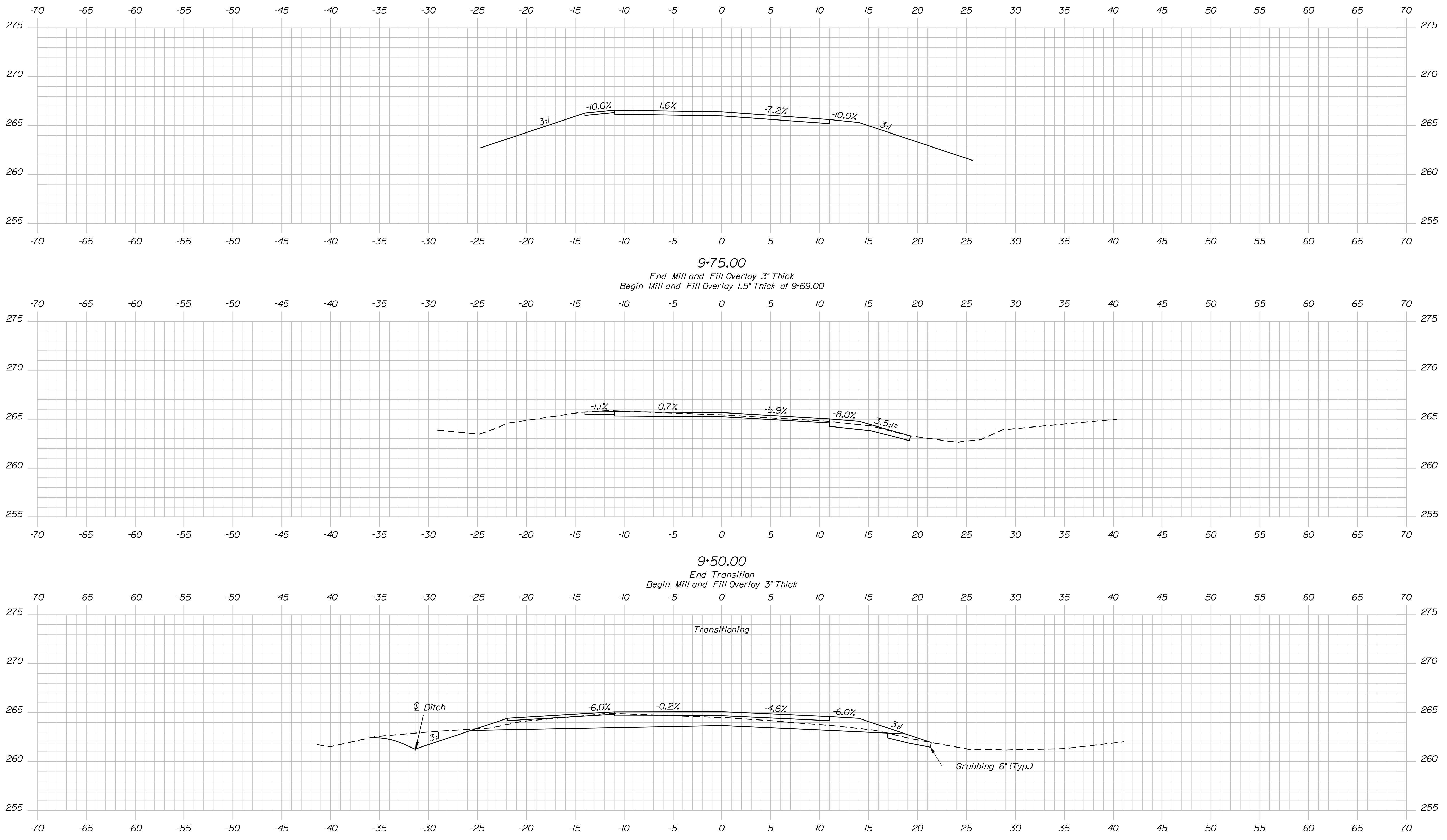
SHEET NUMBER
14
OF 19

Date: 12/13/2017

Username: armand.i.paradis

Division: BRIDGE

Filename: ... \015_XSECT_9+25 to 9+75.dgn



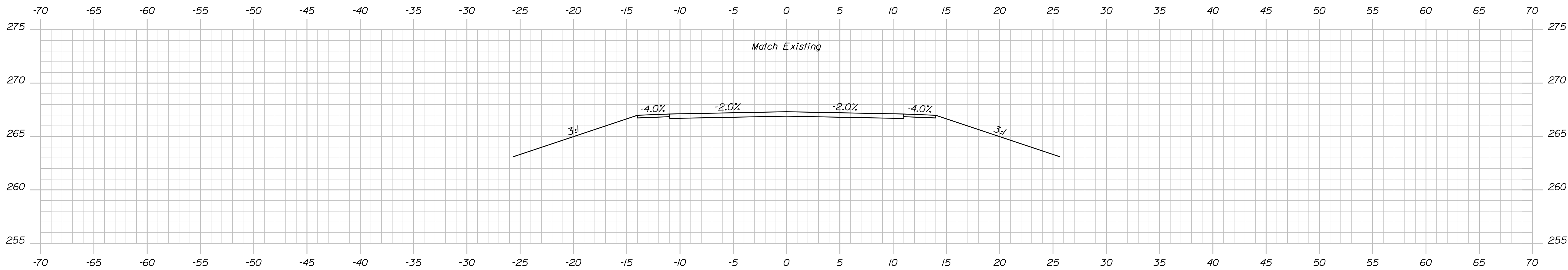
STATE OF MAINE
 DEPARTMENT OF TRANSPORTATION
 STP-2081(500)
 WIN 020815.00
 BRIDGE NO. 2135 BRIDGE PLANS

DATE	SIGNATURE
NOV 2017	
DEC 2017	
JUL 2017	
	P.E. NUMBER
	DATE

PROJ. MANAGER	BY	DATE
MARK GRAY	W. ROHMAN	NOV 2017
CHECKED-REVIEWED	M. WRIGHT	DEC 2017
B. NICHOLS	T. WHITE	JUL 2017
DESIGN-REVIEWED	B. SLAVEN	
DESIGN-DETAILED		
REVISIONS 1		
REVISIONS 2		
REVISIONS 3		
REVISIONS 4		
FIELD CHANGES		

CORSON CORNER BRIDGE
 BLACK STREAM
 ATHENS-HARTLAND SOMERSET COUNTY
 CROSS SECTIONS

SHEET NUMBER
15
 OF 19



10+00.00
End Mill and Fill Overlay 1.5" Thick

STATE OF MAINE
DEPARTMENT OF TRANSPORTATION
STP-2081(500)

BRIDGE NO. 2135
WIN
020815.00
BRIDGE PLANS

PROJ. MANAGER	BY	DATE
DESIGN-DETAILED MARK GRAY	W. ROHMAN	NOV. 2017
CHECKED-REVIEWED B. NICHOLS	M. WIGHT	DEC. 2017
DESIGN-DETAILED B. SLAVEN	T. WHITE	JUL. 2017
REVISIONS 1		
REVISIONS 2		
REVISIONS 3		
REVISIONS 4		
FIELD CHANGES		

CORSON CORNER BRIDGE
BLACK STREAM
ATHENS-HARTLAND SOMERSET COUNTY
CROSS SECTIONS

SHEET NUMBER
16
OF 19

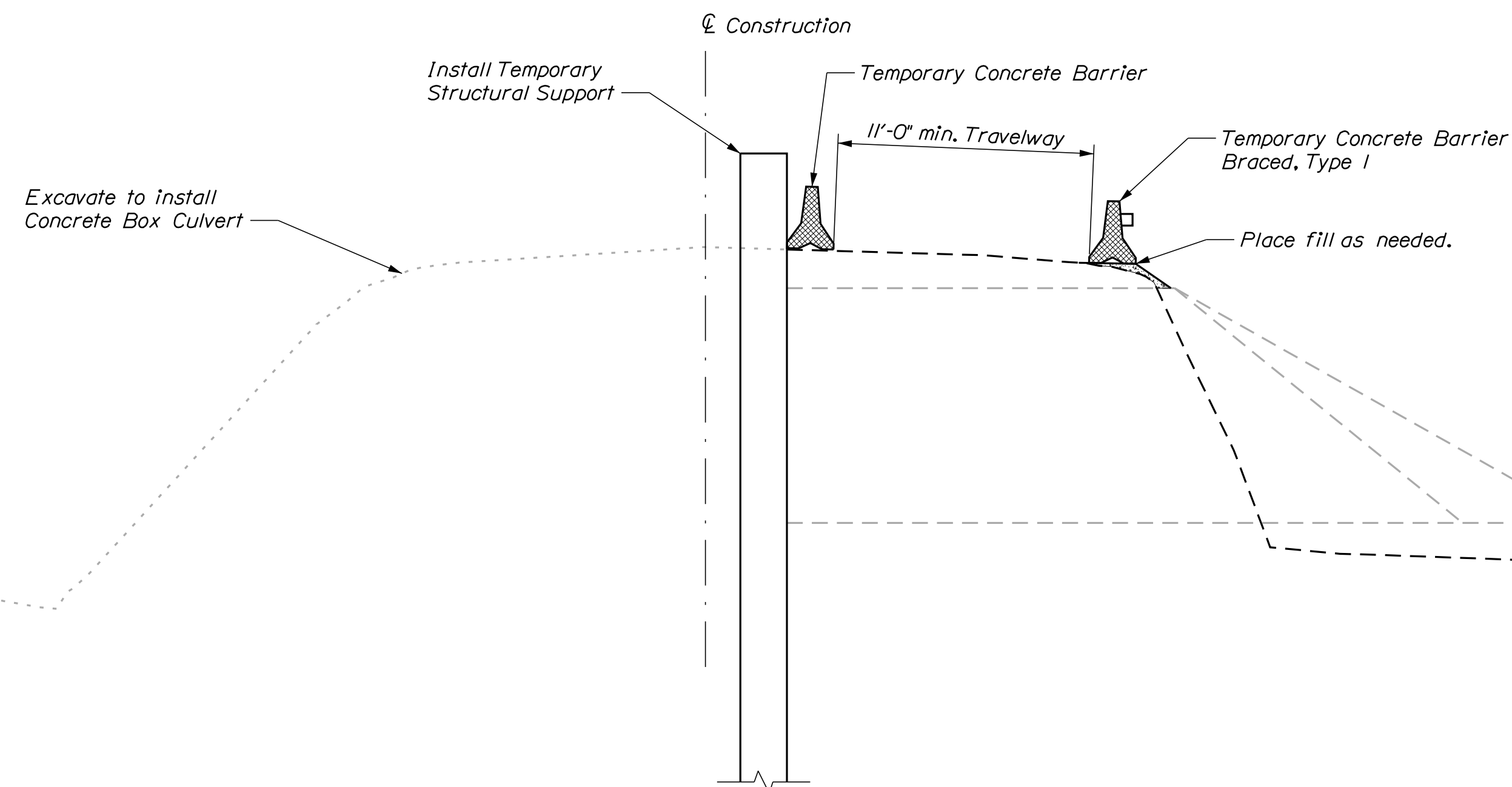
STAGED CONSTRUCTION NOTES

Stage 1: Install temporary structural support while maintaining one 11'-0" min. wide lane of alternating traffic using temporary traffic signals. Remove the downstream sections of existing arch and ground. Construct downstream portion of concrete box.

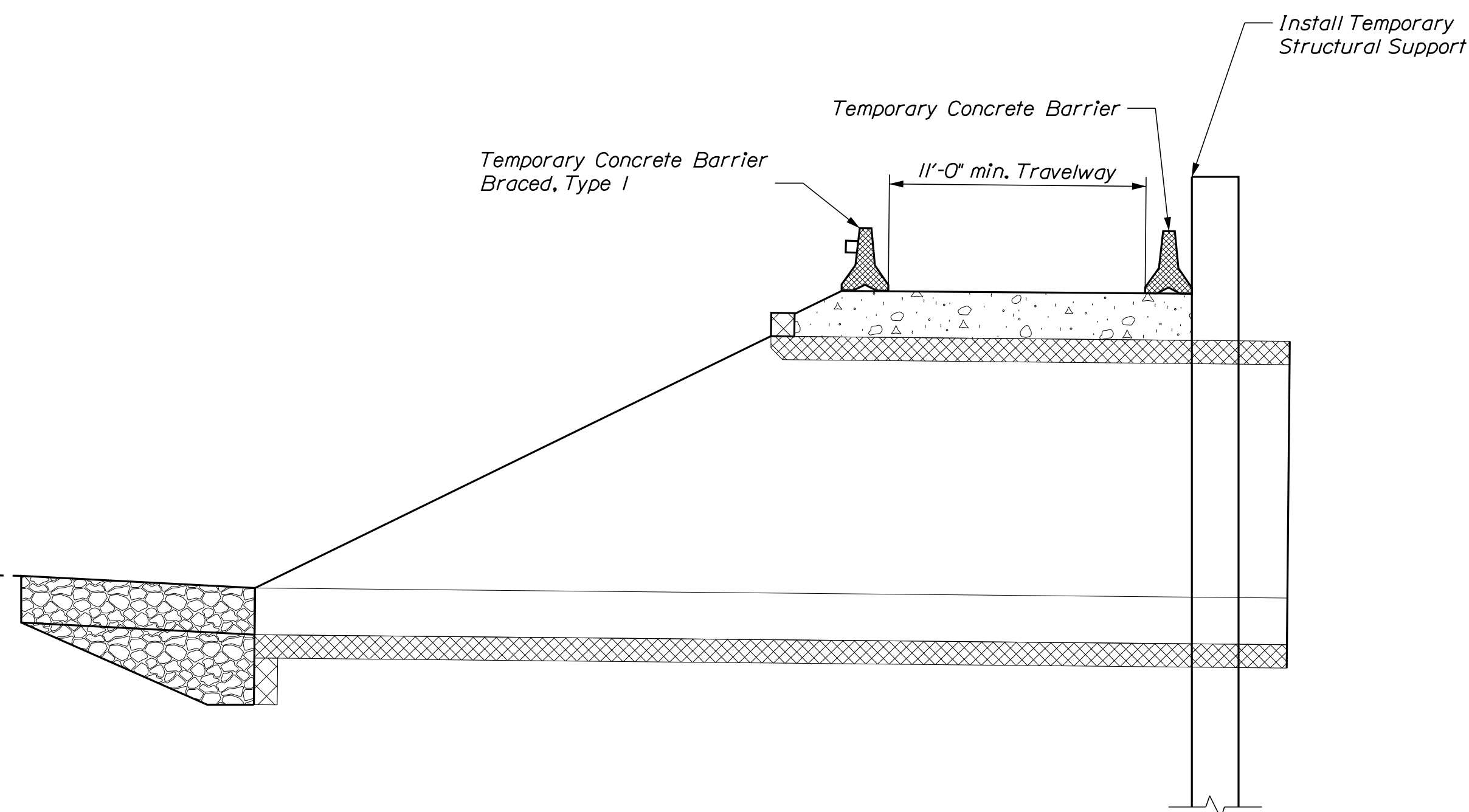
Stage 2: Construct temporary traffic lane on downstream side. Provide one 11'-0" min. wide lane of alternating traffic using temporary traffic signals over the newly installed concrete box culvert on the downstream side. Remove the remaining upstream sections of existing arch and construct upstream portion of concrete box. Construct roadway base, base layer of paving and guardrail on upstream side.

Stage 3: Complete roadway base, base layer of paving and guardrail on downstream side.

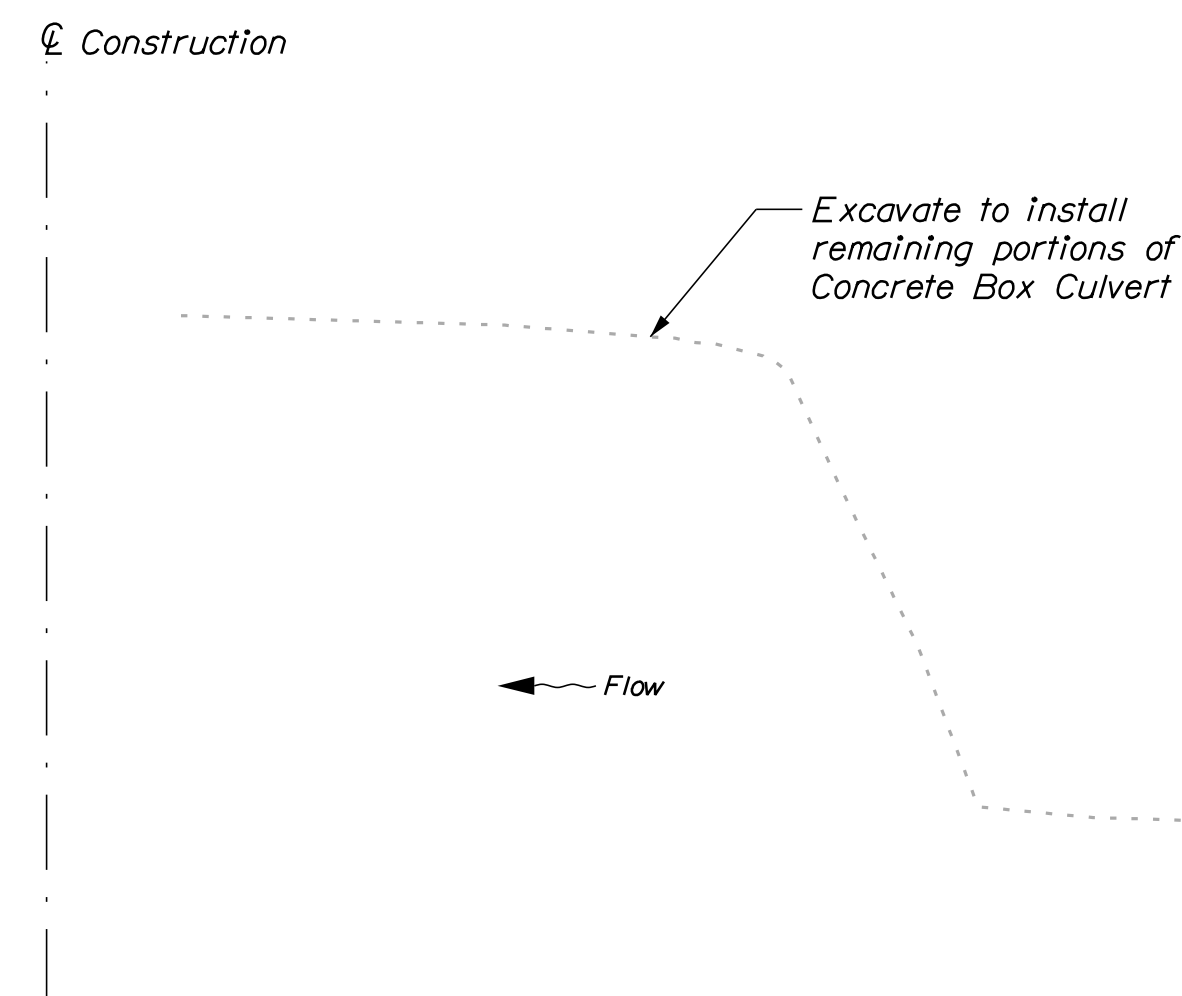
Stage 4: Install final course of paving.



STAGE NO. 1



STAGE NO. 2



STATE OF MAINE
DEPARTMENT OF TRANSPORTATION
STP-2081(500)
WIN
020815.00
BRIDGE NO. 2135
BRIDGE PLANS

PROJ. MANAGER	BY	DATE
MARK GRAY	W. ROHMAN	NOV. 2017
CHECKED-REVIEWED	M. WRIGHT	DEC. 2017
DESIGN-REVIEWED	B. NICHOLS	DEC. 2017
DESIGNS DETAILED	T. WHITE	JUL. 2017
DESIGNS DETAILED	B. SLAVEN	JUL. 2017
REVISIONS 1		
REVISIONS 2		
REVISIONS 3		
REVISIONS 4		
FIELD CHANGES		

CORSON CORNER BRIDGE
BLACK STREAM
ATHENS-HARTLAND SOMERSET COUNTY
STAGED CONSTRUCTION

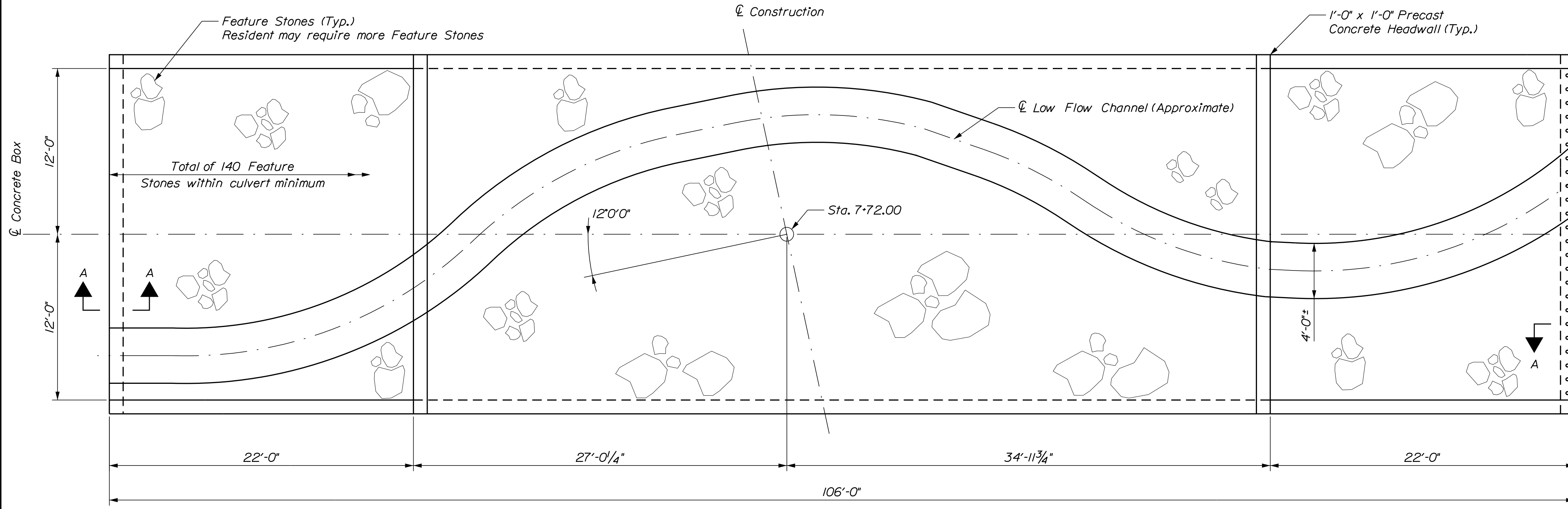
SHEET NUMBER
17
OF 19

Date: 12/13/2017

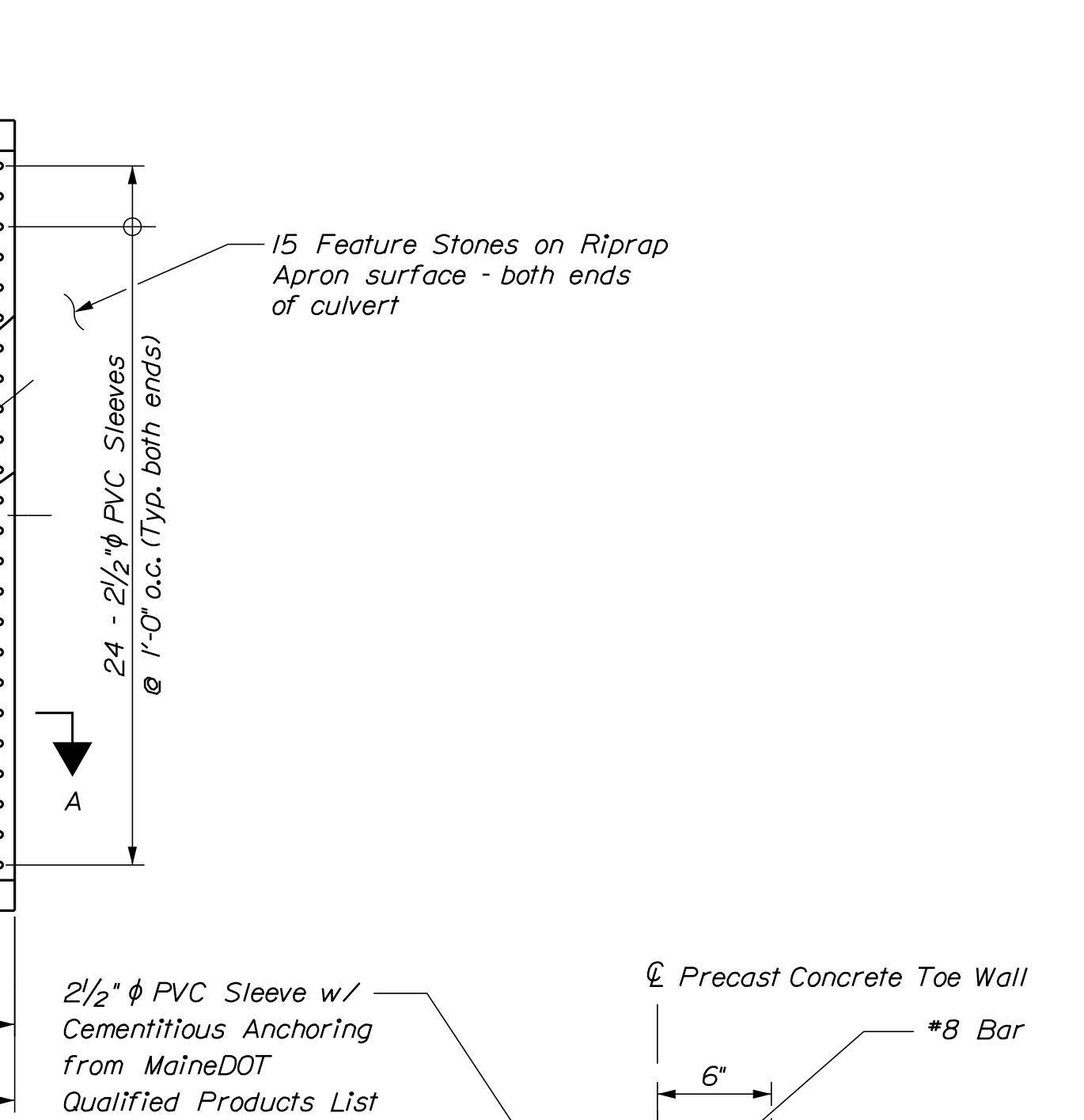
Username: armand.i.paradis

Division: BRIDGE

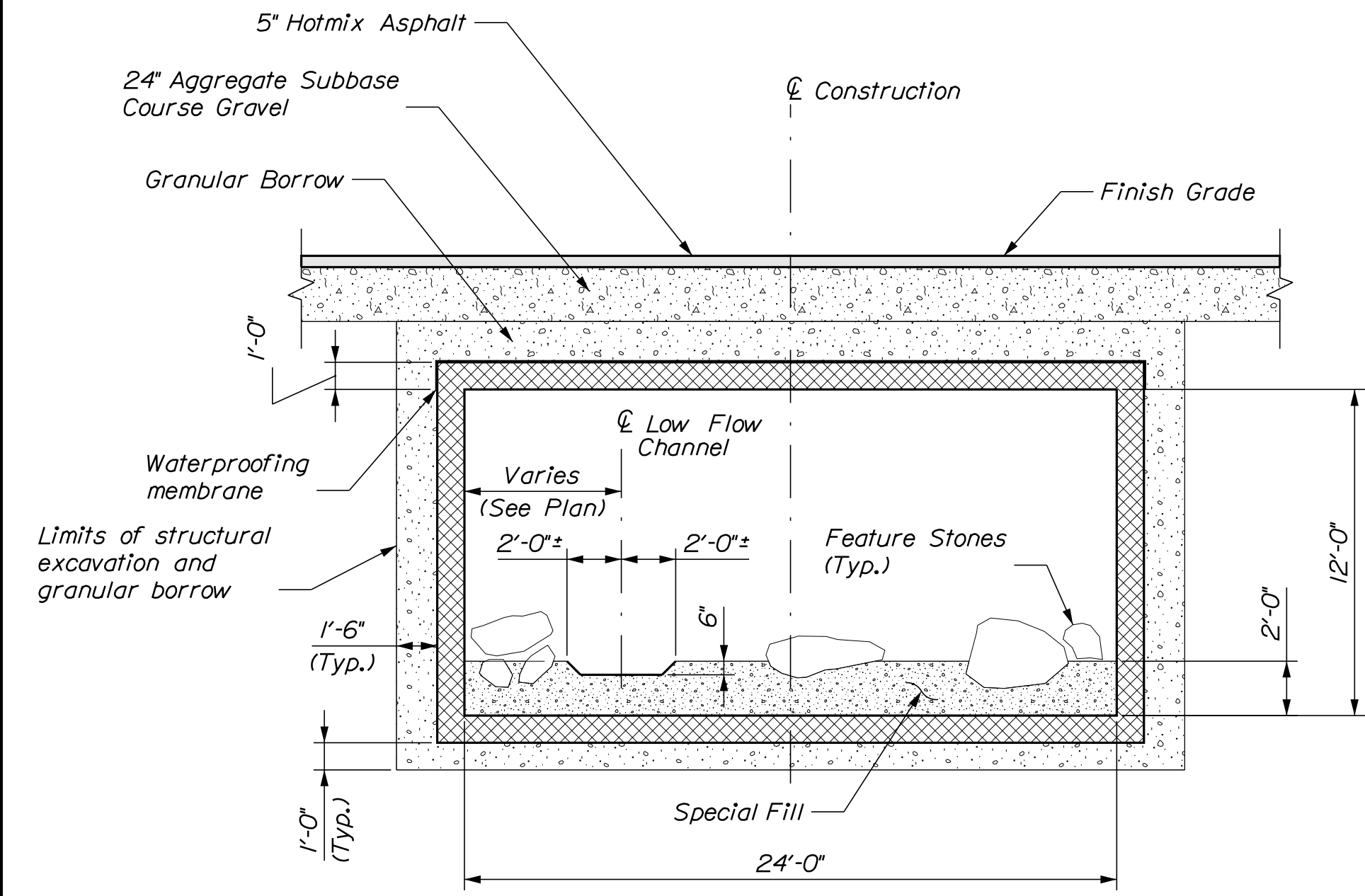
Filename: ...100\BRIDGE\MSTA\018_Box.dgn



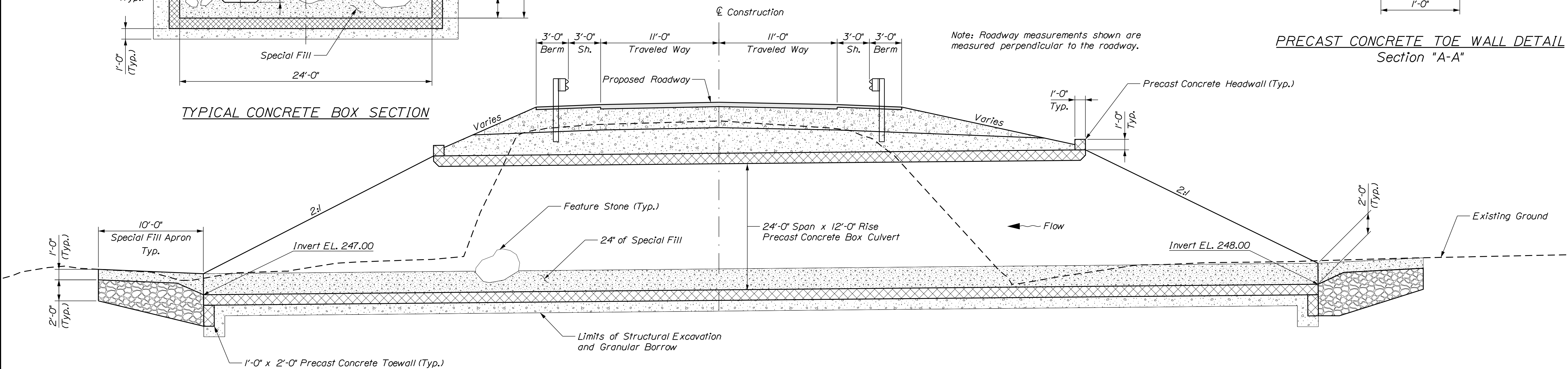
CONCRETE BOX PLAN



PRECAST CONCRETE TOE WALL DETAIL Section "A-A"



TYPICAL CONCRETE BOX SECTION



TYPICAL CONCRETE BOX SECTION Section along CL of Concrete Box at Sta. 7+72.00 Skewed 12° ahead on the Left.

PRECAST CONCRETE ARCHES OR BOXES NOTES

1. The precast units shall be designed to carry construction loadings with a minimum fill cover of 18 inches over the top of the units.
2. The construction, handling, and assembly of the precast units shall be in accordance with Special Provisions Section 534, Precast Structural Concrete, and with the manufacturer's specifications as applicable.

DATE	BY	PROJ. MANAGER	DESIGN DETAILED	CHECKED/REVIEWED	DESIGNED/DETAILS	REVISIONS	SIGNATURE	P.E. NUMBER	DATE
NOV 2017	W. ROHMAN	MARK GRAY	MARK GRAY	M. WRIGHT	B.S. LAIVEN	1			
DEC 2017	M. WRIGHT					2			
JUL 2017	T. WHITE					3			
						4			

Town, County, State _____
 Approx. Property Lines _____ P.L.
 Existing Right of Way _____
 Limits of Wrought Portion _____ L.O.W.P.
 Control Of Access _____ C.O.A.
 New Right of Way _____
 New Easement _____
 New Temporary Rights _____
 New R/W Within Existing R/W _____

New R/W Along Existing R/W _____
 Building _____
 Trees Conifer _____
 Deciduous _____
 Tree Line _____
 Bush Line _____
 Water Edge _____
 Ledge _____
 Fence CHAIN LINK _____
 Sign _____
 Clearing Limit Line CLL _____
 Rock/Boulder _____
 Flag Pole _____
 BARB WIRE _____
 STOCKADE _____
 WELL _____
 Mailbox _____

PLAN LEGEND

Existing Proposed

Sanitary Sewer _____
 Telephone Line _____
 Electric Line _____
 Water Line _____
 Underdrain Line _____
 Gas Line _____
 Guardrail _____
 Culvert _____

Travelled Way _____
 Ditch _____
 Catch Basin _____
 Manhole _____
 Sewer Manhole _____
 Utility Pole _____
 Fire Hydrant _____
 Curbing _____

Cut Line _____
 Stonewall _____
 Baseline _____
 Monument _____
 Iron Rod Found _____ IRF
 Replacement Pin Set _____

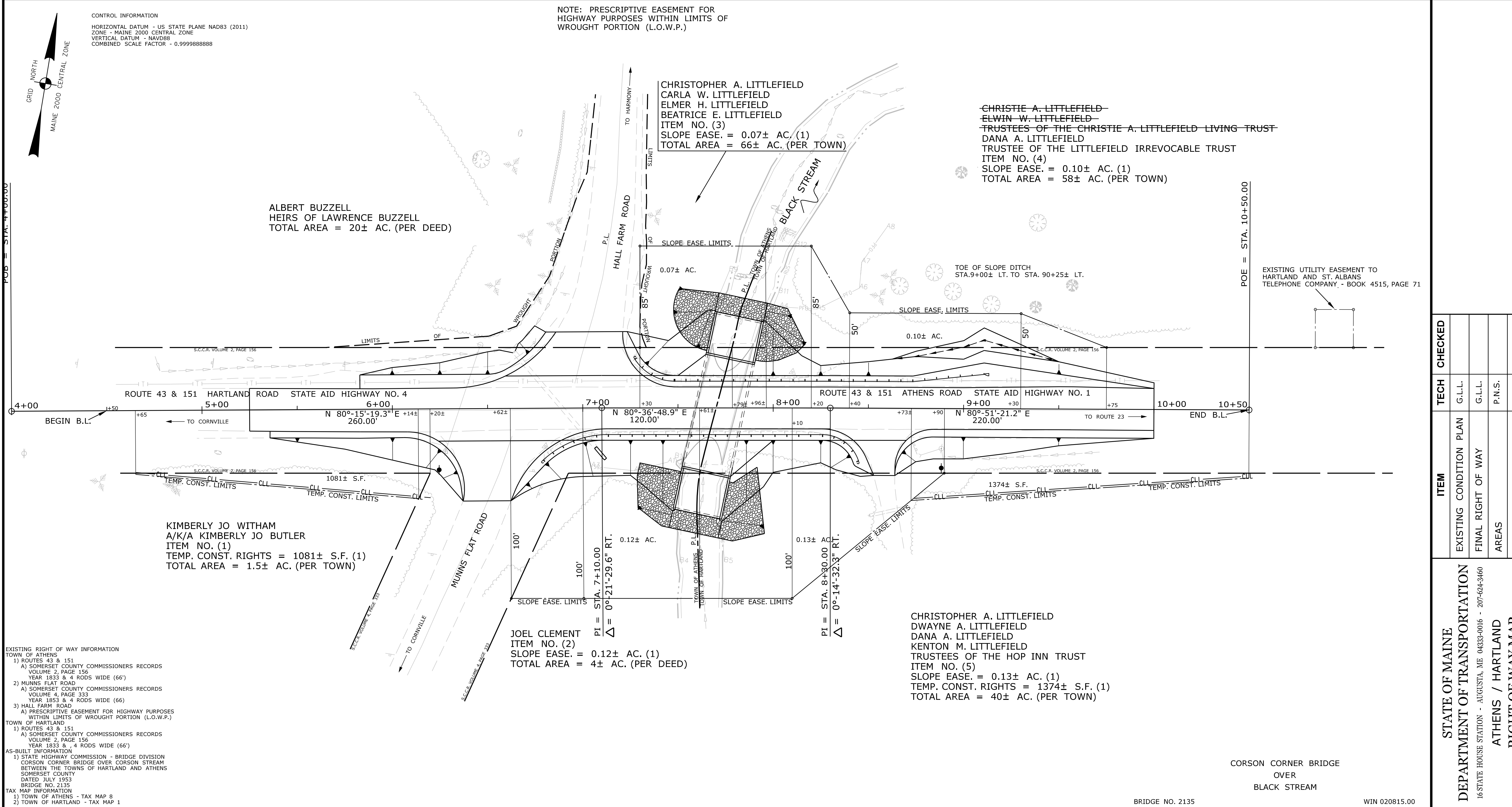
Fill Line _____
 Retaining Wall _____
 Traverse Point _____
 Pipe Found _____ IPF

STATE OF MAINE
 REGISTRY OF DEEDS

COUNTY _____
 RECEIVED _____
 at _____ h _____ m _____ M and recorded in
 Plan Book _____, Page _____
 Attest: _____ REGISTER

THIS PLAN WAS PREPARED IN CONNECTION WITH THE DEPARTMENT'S ACQUISITION OF REAL PROPERTY FOR TRANSPORTATION PURPOSES. IT CANNOT BE USED TO ESTABLISH LEGAL BOUNDARIES BETWEEN ADJUTING PROPERTY OWNERS.

25 0 25 50 75 100
 Scale of Feet



ITEM	TECH	CHECKED
EXISTING CONDITION PLAN	G.L.L.	
FINAL RIGHT OF WAY	G.L.L.	
AREAS	P.N.S.	

STATE OF MAINE
 DEPARTMENT OF TRANSPORTATION
 16 STATE HOUSE STATION - AUGUSTA, ME 04333-0016 - 207-624-3460
 ATHENS / HARTLAND
 RIGHT OF WAY MAP

REVISIONS			PLAN FILED IN PLAN BOOK				PAGE COUNTY RECORD						
NO.	DATE	DESCRIPTION	BY	NO.	GRANTOR	INSTRUMENT	DATE	BOOK	PAGE	NO.	DATE	BOOK	PAGE
1	11/29/17	REVISED OWNER ITEM NO. 4	PNS			COND.	11/28/17	5230	212				

DAVID BERNHARDT
 COMMISSIONER
 JOYCE NOEL TAYLOR
 CHIEF ENGINEER

DATE _____

STATE AID HIGHWAY NOS. 4 & 1
 ROUTES 43 & 151 / HARTLAND ROAD / ATHENS ROAD
 ATHENS / HARTLAND SOMERSET COUNTY
 FEDERAL AID PROJECT NO. STP-2081(500)

AUGUST 2017
 SCALE 1" = 25'

RIGHT-OF-WAY MAP
 SHEET 1 OF 1

D.O.T. FILE NO. 13-393

SHEET NUMBER
19
 OF 19

Filename: ... \00\ROW\MSTA001_RWP\PLAN1.dgn
 Division: BRIDGE
 User: armand.i.paradis
 Date: 12/13/2017