

STATE OF MAINE
DEPARTMENT OF TRANSPORTATION



STATEWIDE

HIGHWAY RAMPS

<u>PROJECT LOCATION:</u>	US Rt 1, I-295, I-95, and I-395 ramps
<u>PROGRAM AREA:</u>	Traffic
<u>SCOPE OF WORK:</u>	Install signage, striping, etc. at select ramps to mitigate wrong way movements

WIN 20587.00 & 23010.00 HSIP-2058(700) & 2301000

STATEWIDE
HIGHWAY RAMPS
TITLE SHEET

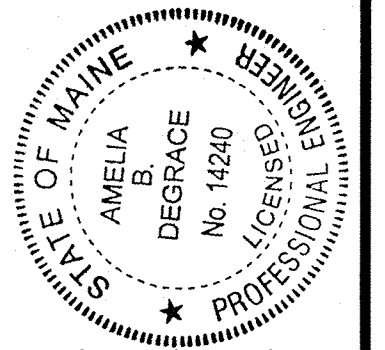
SHEET NUMBER

1

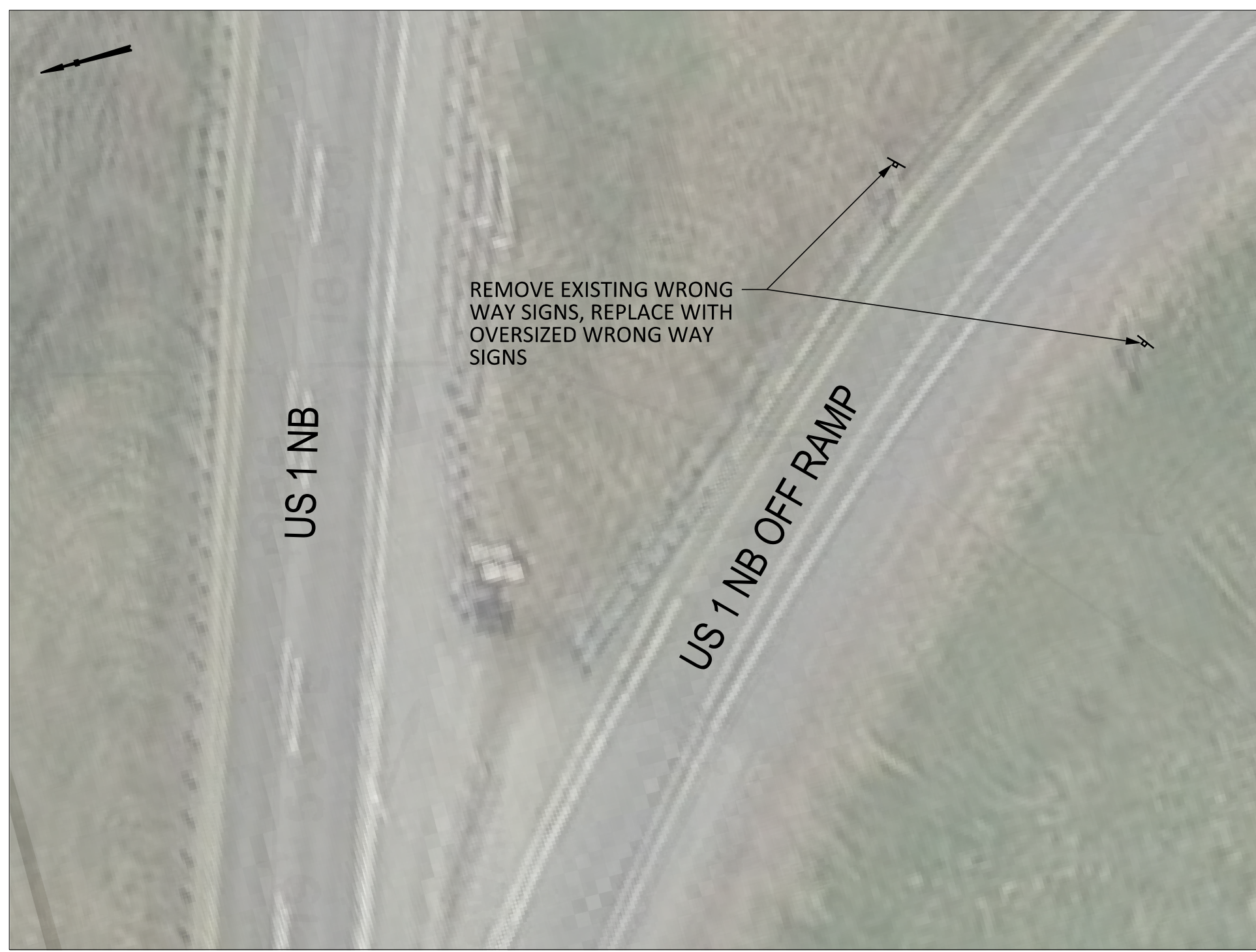
OF 10

PROGRAM	TRAFFIC
PROJECT MANAGER	AMELIA DEGRACE
DESIGNER	AMELIA DEGRACE
CONSULTANT	
PROJECT RESIDENT	
CONTRACTOR	
PROJECT COMPLETION DATE	

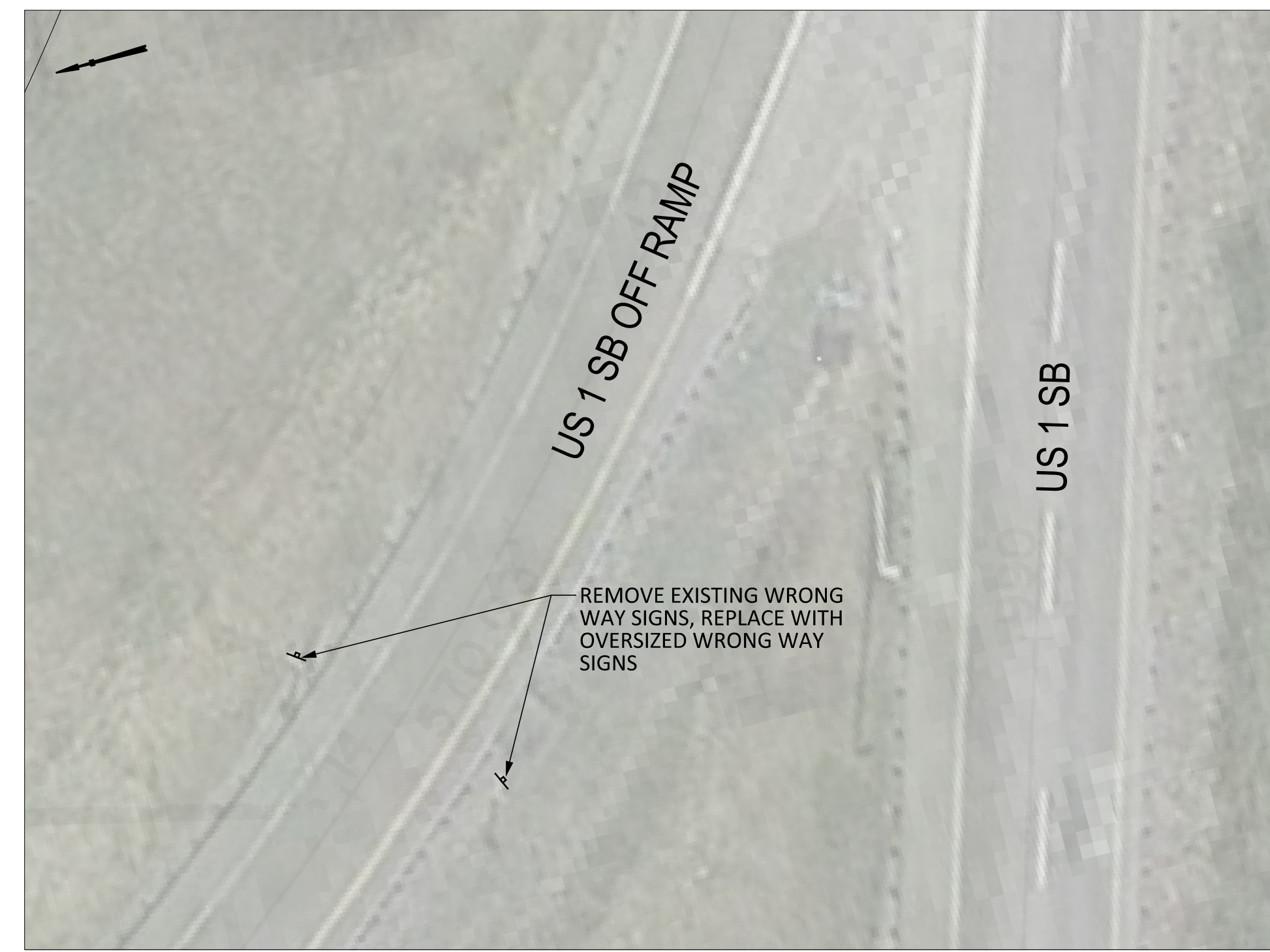
<i>A.B.D.</i>	SIGNATURE
14240	P.E. NUMBER
04/13/2018	DATE



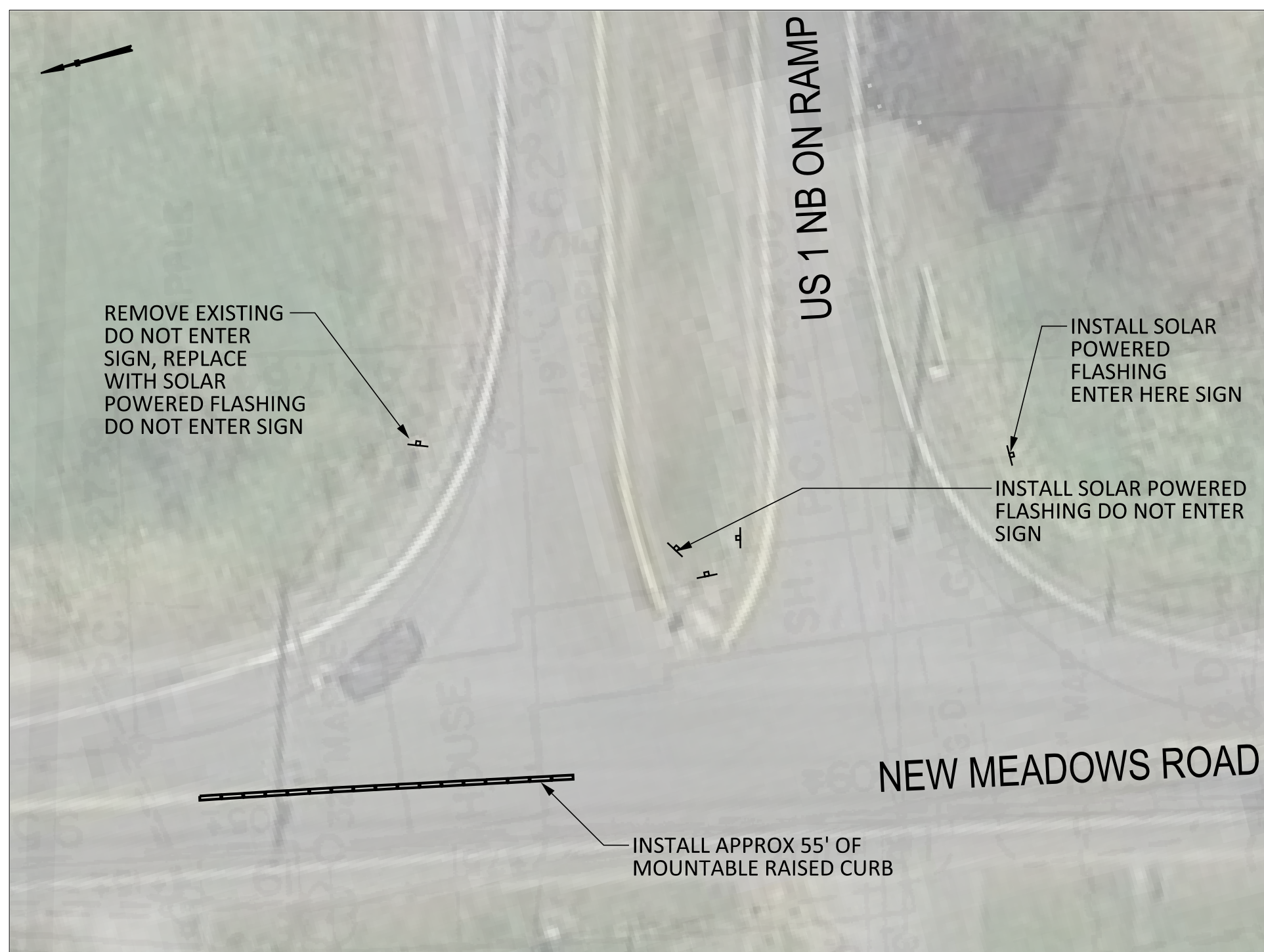
STATE OF MAINE DEPARTMENT OF TRANSPORTATION	APPROVED	DATE
COMMISSIONER:	<i>[Signature]</i>	4/19/18
CHIEF ENGINEER:	<i>[Signature]</i>	4-19-18



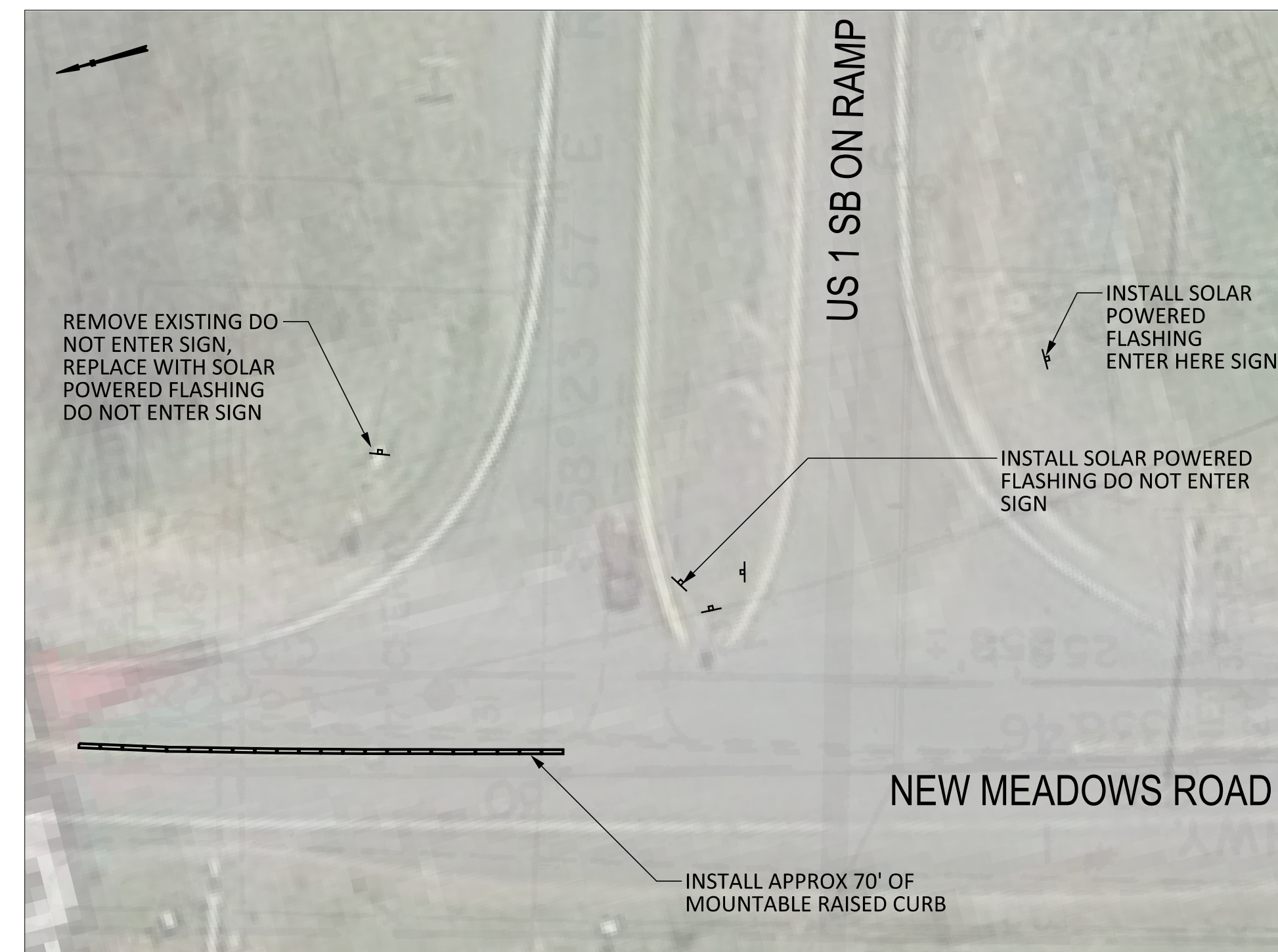
US1 NB RAMP AT NEW MEADOWS ROAD, WEST BATH



US1 SB RAMP AT NEW MEADOWS ROAD, WEST BATH

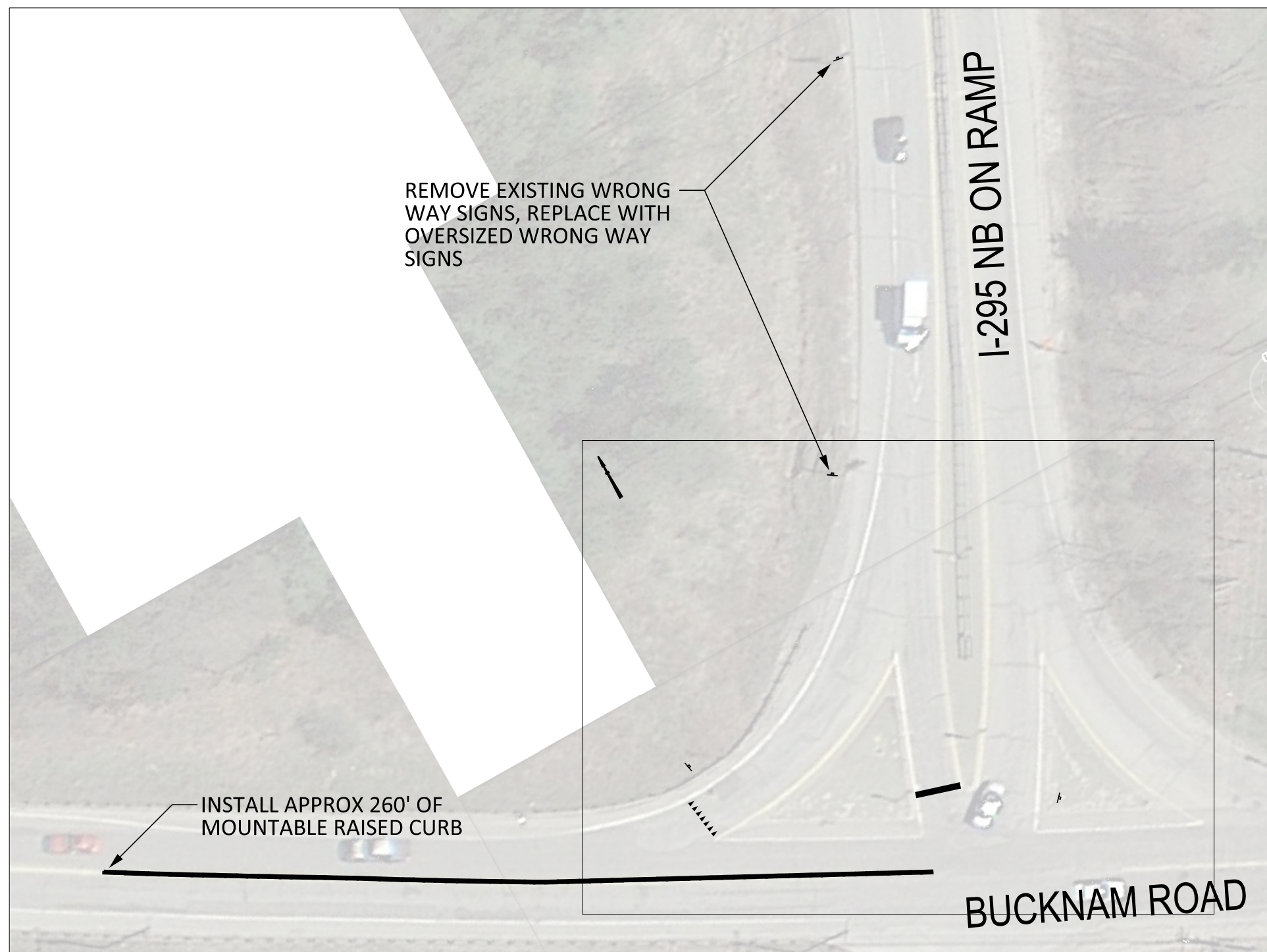


US1 NB RAMP AT NEW MEADOWS ROAD, WEST BATH

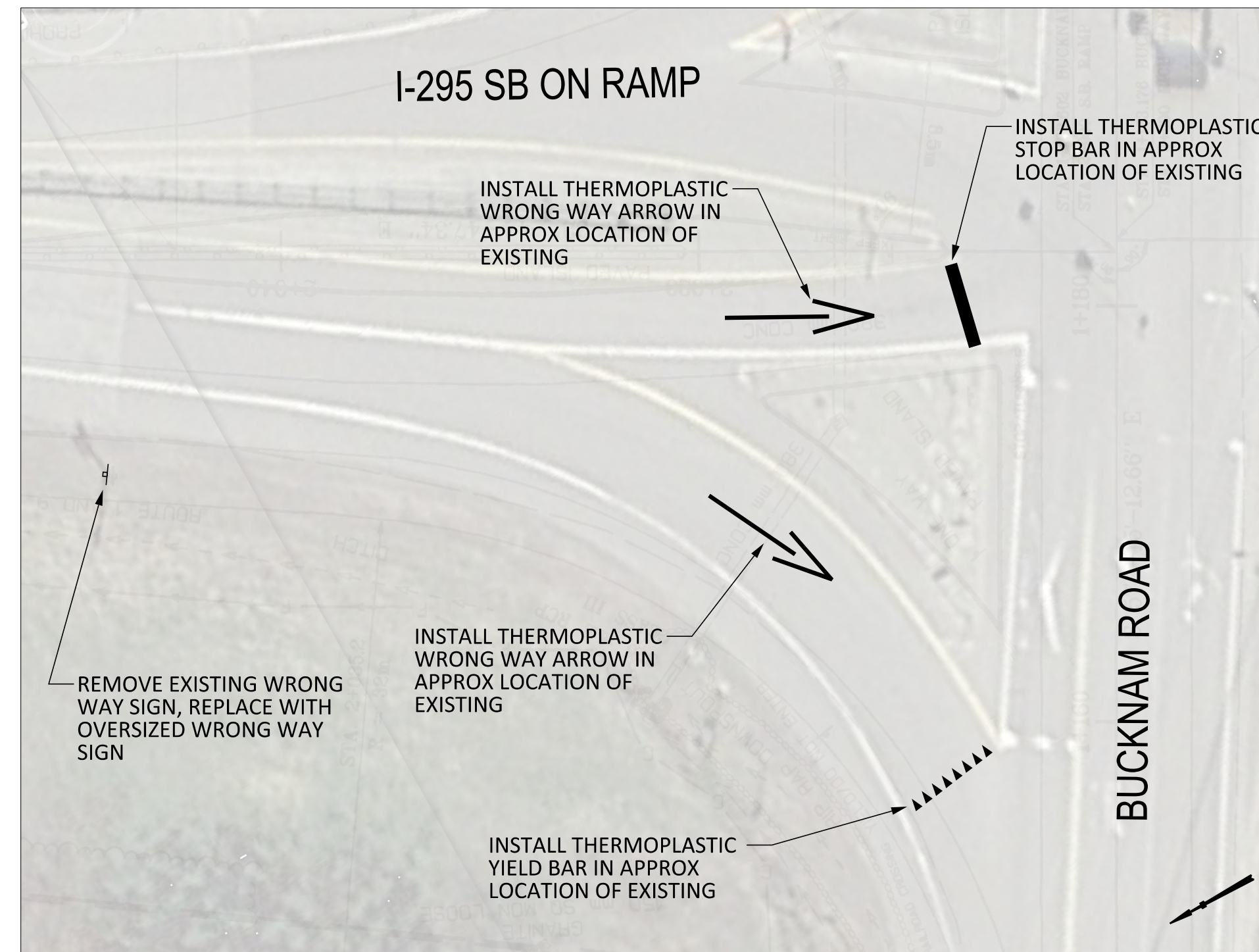


US1 SB RAMP AT NEW MEADOWS ROAD, WEST BATH

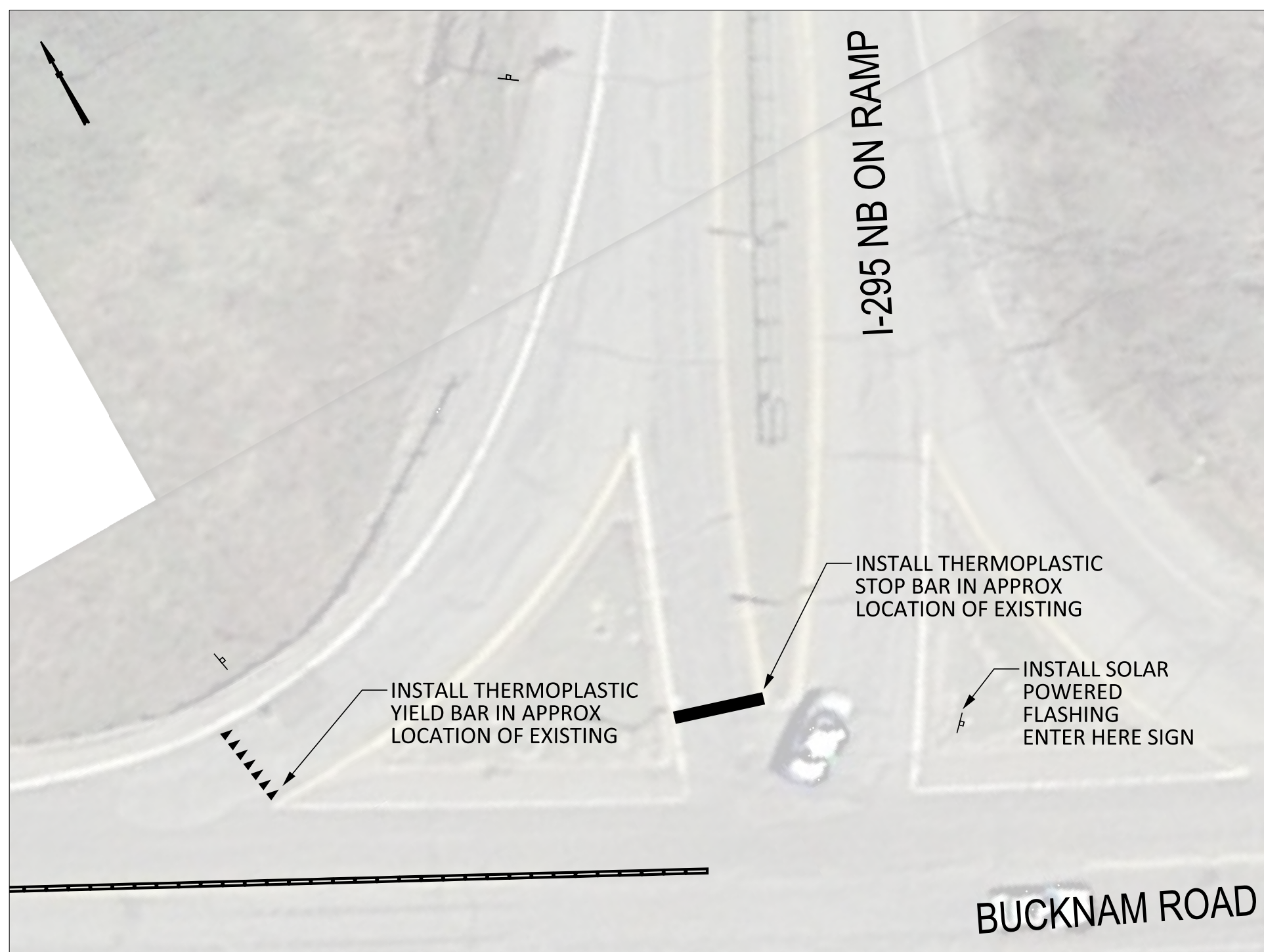
STATE OF MAINE		STATE OF MAINE	
DEPARTMENT OF TRANSPORTATION		DEPARTMENT OF TRANSPORTATION	
HSIP-2058(700)		HSIP-2058(700)	
WIN		WIN	
20587.00		20587.00	
TRAFFIC PLANS		TRAFFIC PLANS	
PROJ. MANAGER	Amelia DeGrace	BY	A. DeGrace
CHECKED/REVIEWED	A. DeGrace	DATE	
DESIGN/REVIEWED		SIGNATURE	
DESIGN/REVIEWED		P.E. NUMBER	
REVISIONS 1		DATE	
REVISIONS 2			
REVISIONS 3			
REVISIONS 4			
FIELD CHANGES			
STATEWIDE HIGHWAY RAMPS		PLANS	
SHEET NUMBER		2	
OF 10		OF 10	



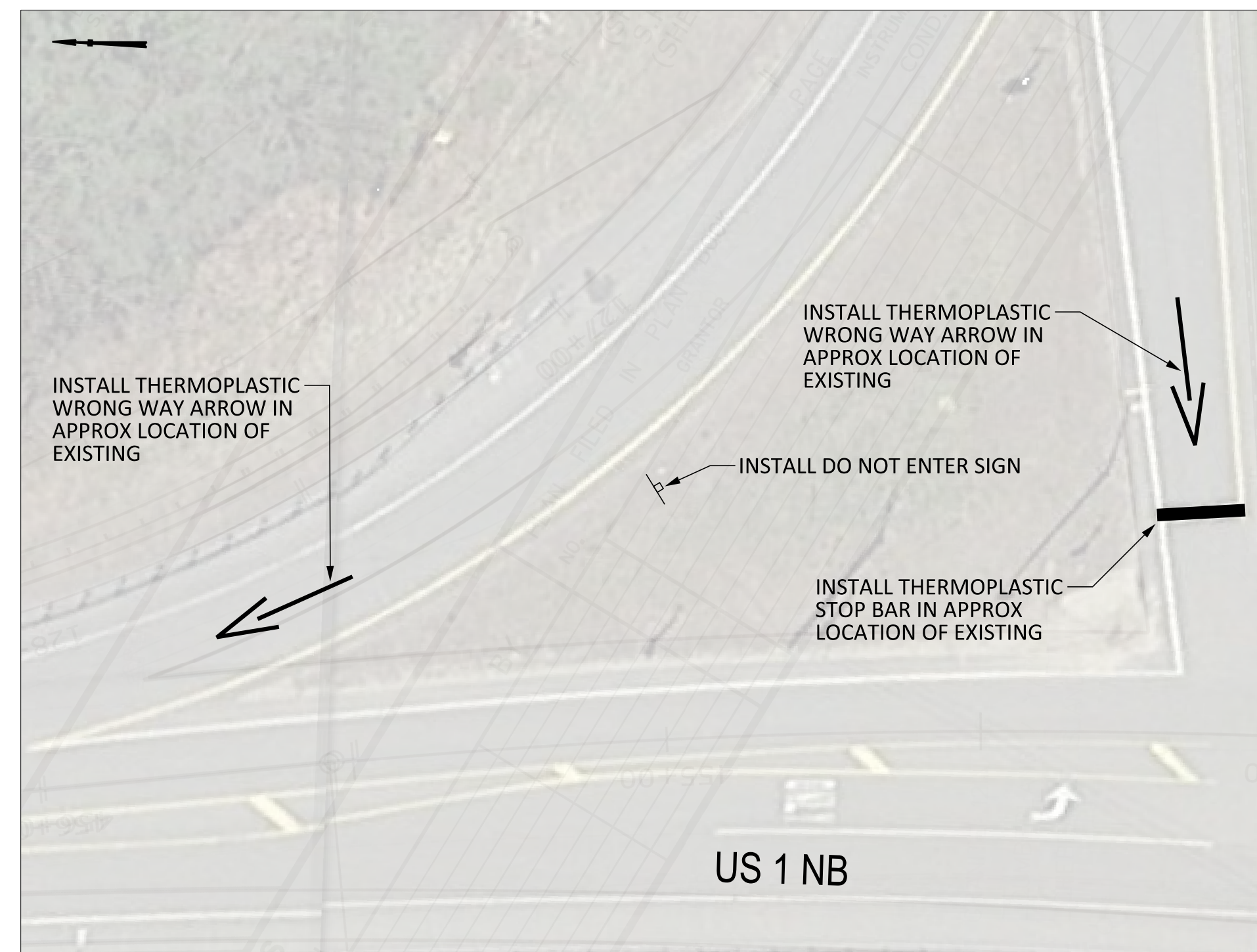
I-295 NB EXIT 10 RAMP, FALMOUTH



I-295 SB EXIT 10 RAMP, FALMOUTH



I-295 NB EXIT 10 RAMP, FALMOUTH



I-295 NB EXIT 15 RAMP, YARMOUTH

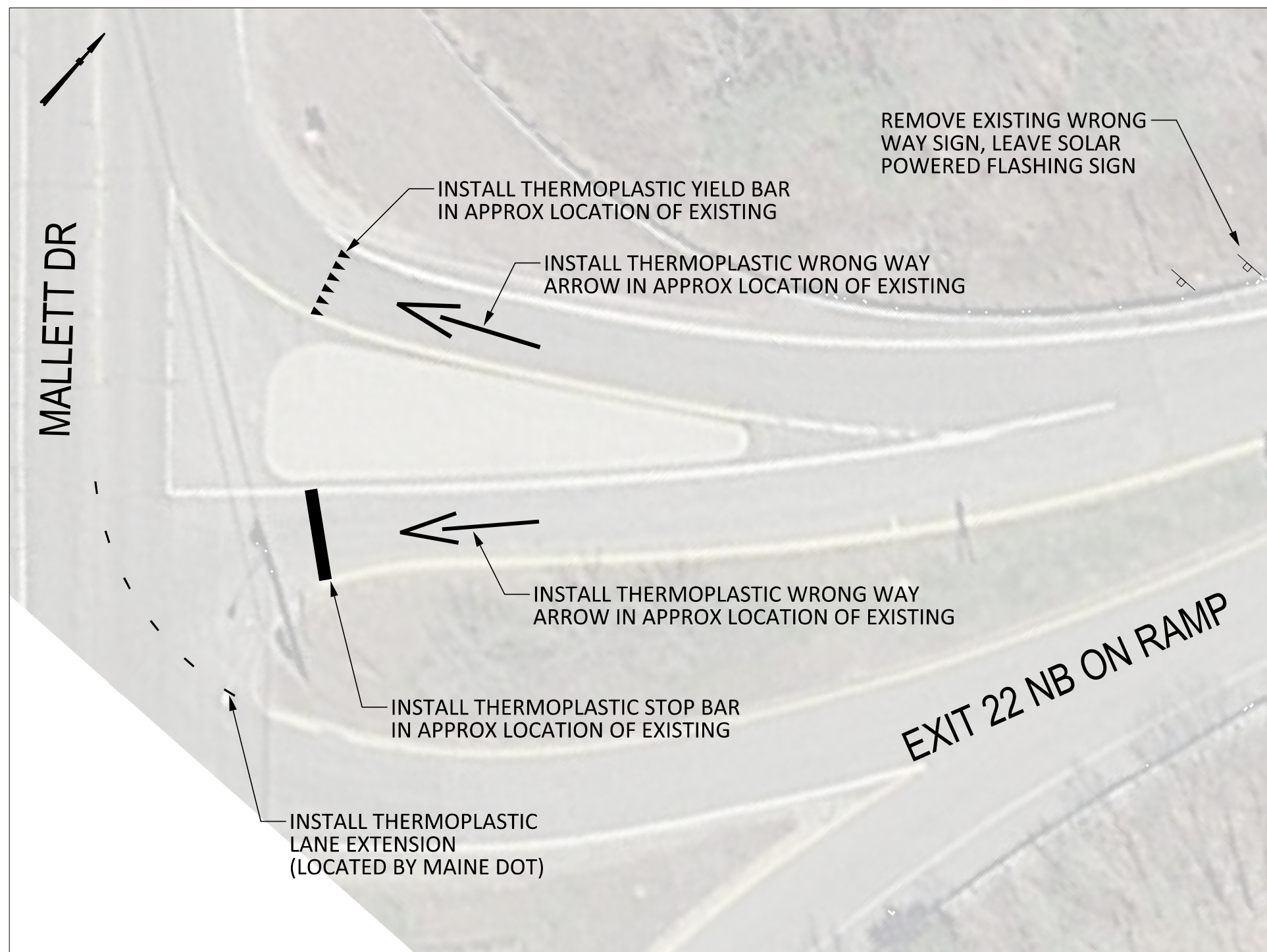
STATE OF MAINE
DEPARTMENT OF TRANSPORTATION
HSIP-2058(700)

WIN
20587.00
HIGHWAY PLANS

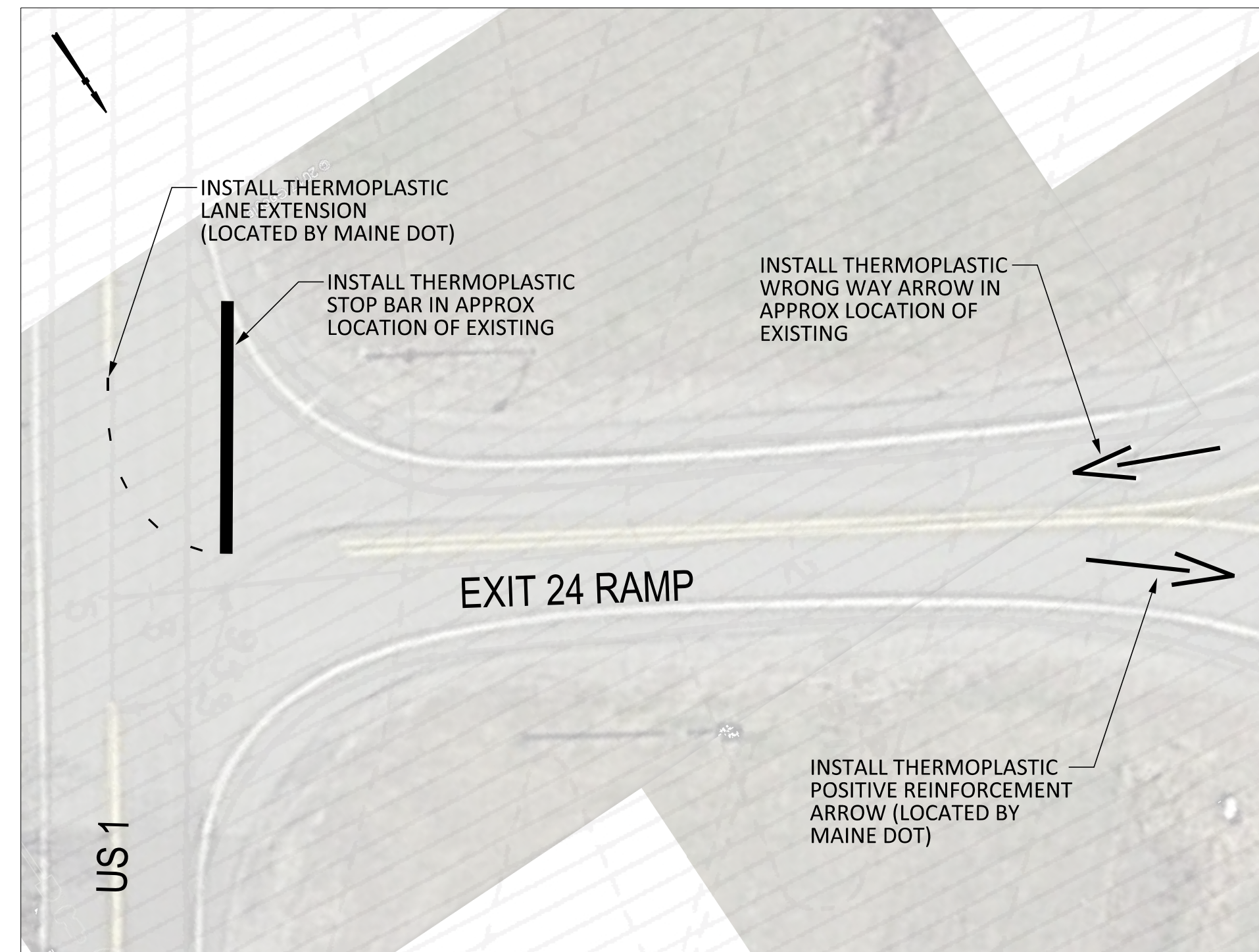
PROJ. MANAGER	BY	DATE
A. DeGrace	A. DeGrace	
CHECKED-REVIEWED		
DESIGN-REVIEWED		
DESIGNS-REVIEWED		
REVISIONS 1		
REVISIONS 2		
REVISIONS 3		
REVISIONS 4		
FIELD CHANGES		

STATEWIDE
HIGHWAY RAMP
PLANS

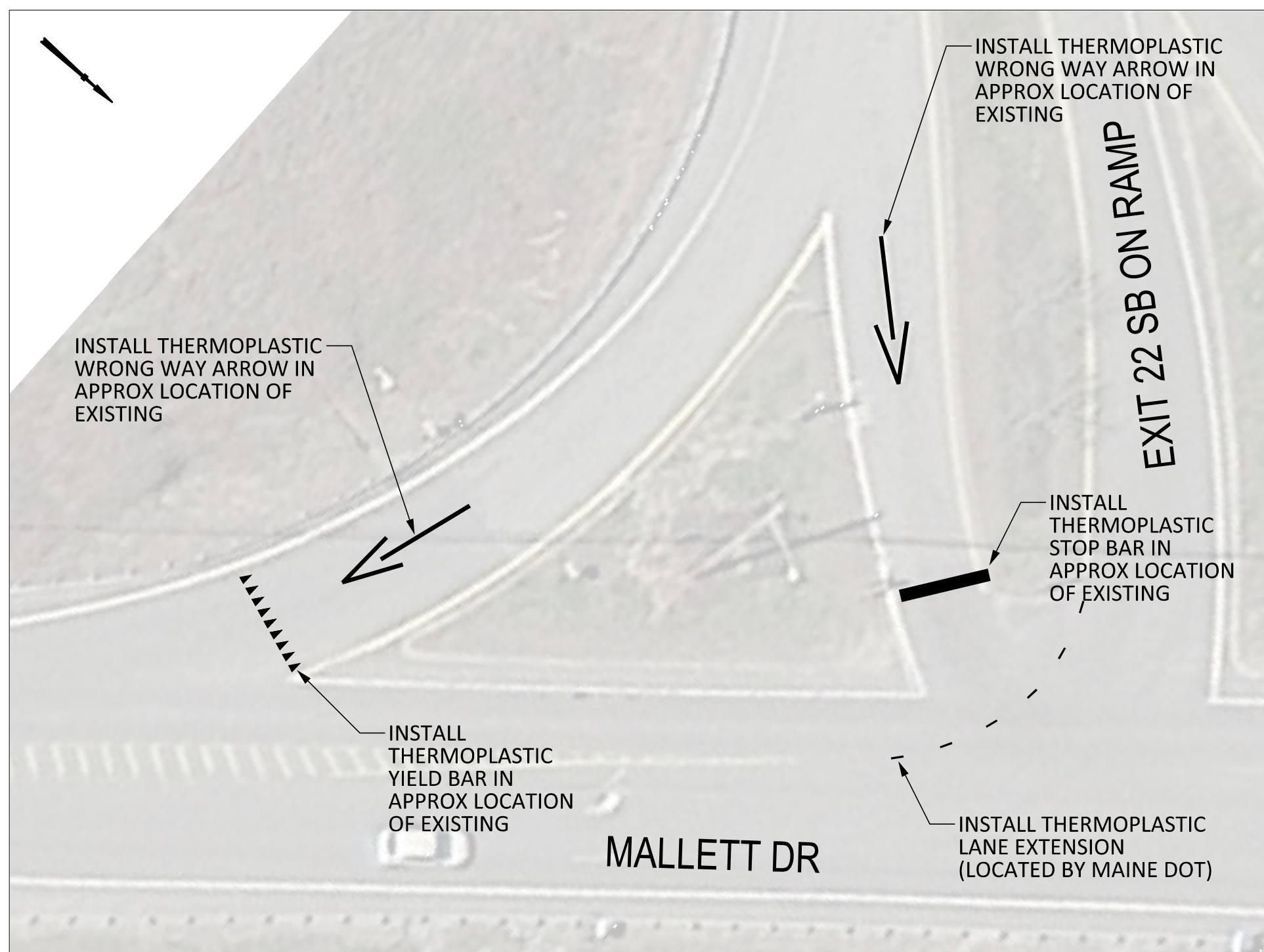
SHEET NUMBER
3
OF 10



I-295 NB EXIT 22 RAMP, FREEPORT

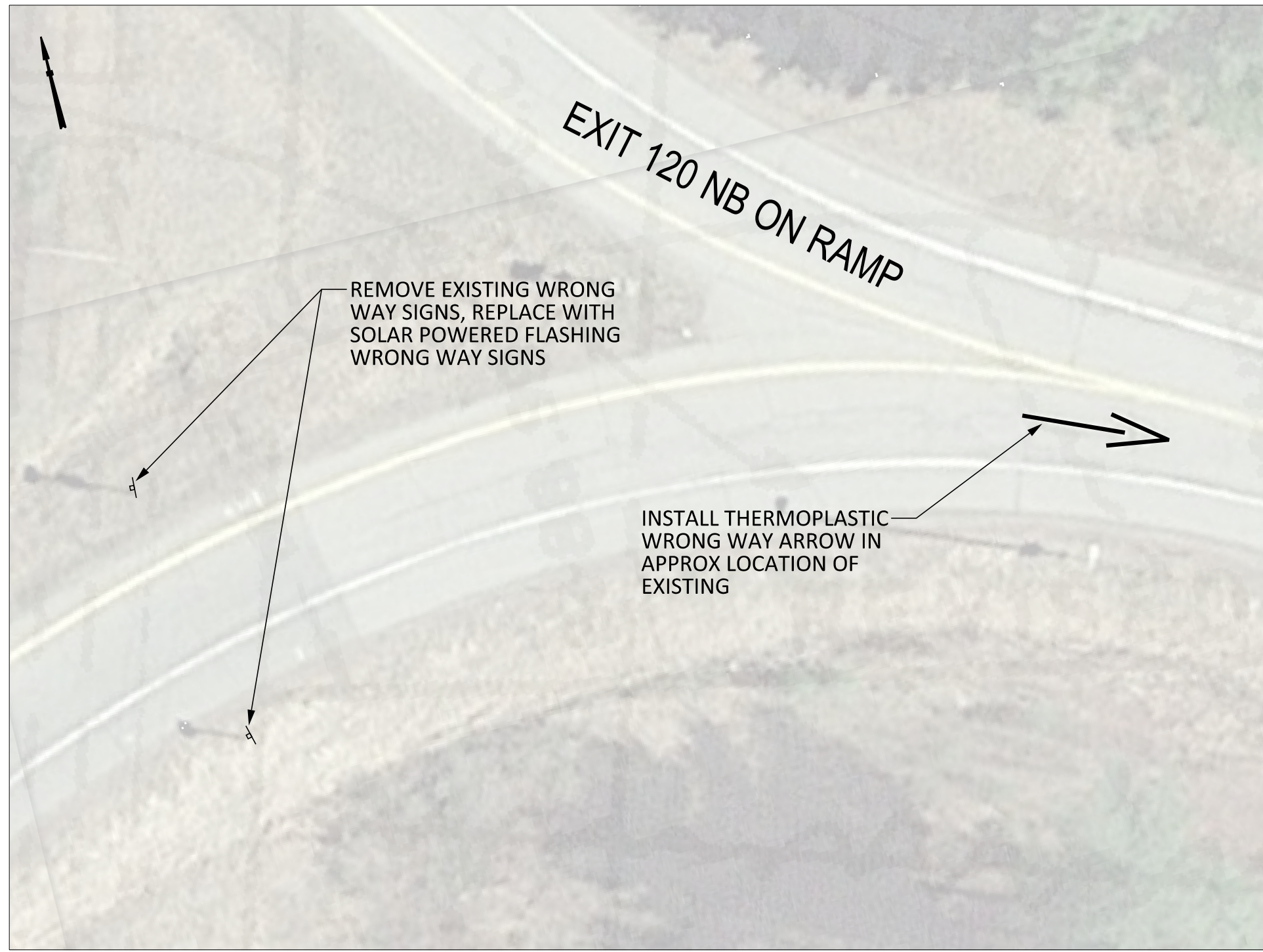


I-295 NB EXIT 24 RAMP, FREEPORT

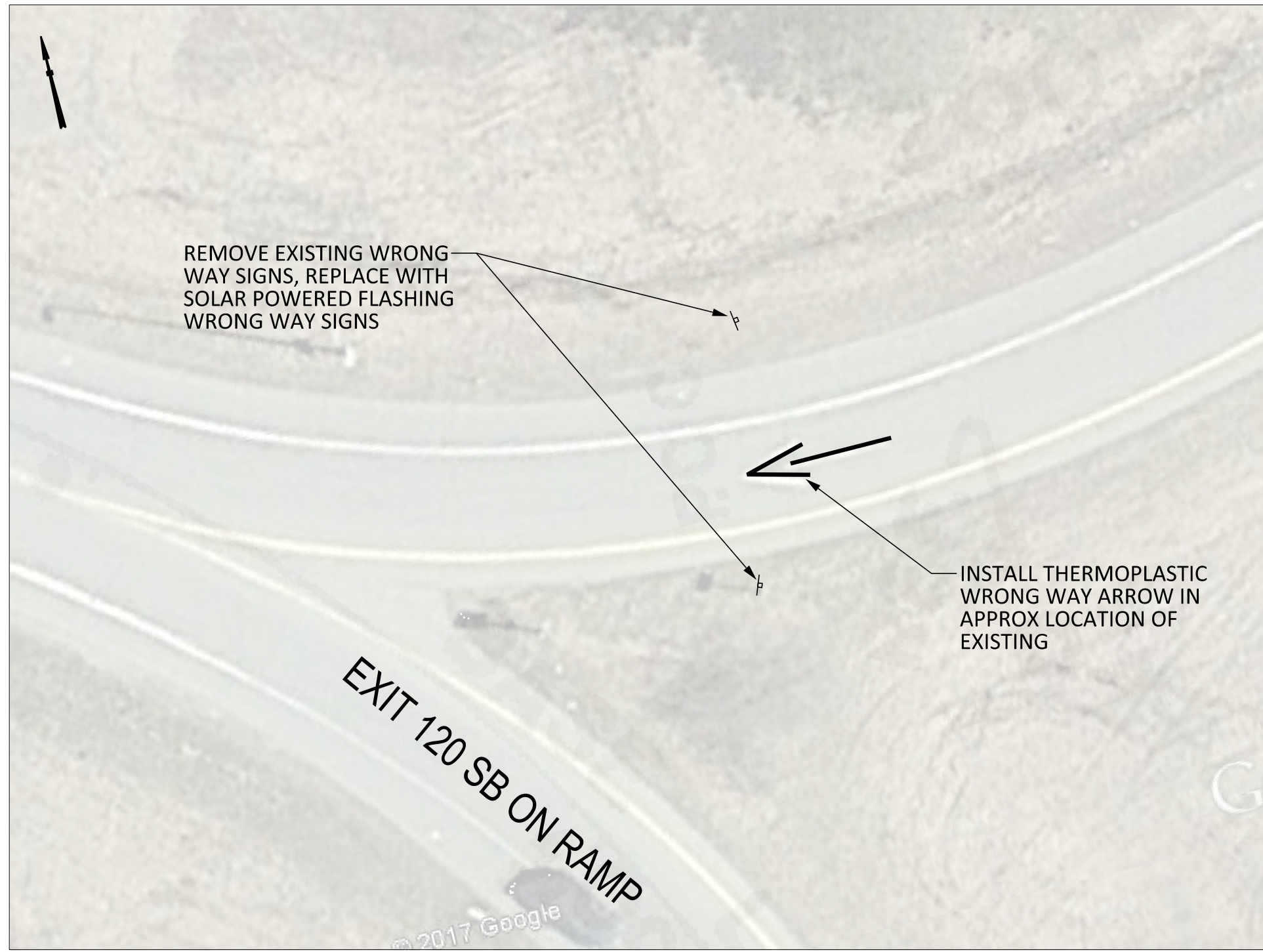


I-295 SB EXIT 22 RAMP, FREEPORT

STATE OF MAINE DEPARTMENT OF TRANSPORTATION		HSIP-2058(700)		WIN 20587.00		HIGHWAY PLANS	
STATEWIDE HIGHWAY RAMP PLANS		SHEET NUMBER		4		OF 10	
PROJ. MANAGER	A. DeGrace	BY	A. DeGrace	DATE		SIGNATURE	
DESIGN-DETAILED	A. DeGrace	CHECKED-REVIEWED				P.E. NUMBER	
DESIGN-DETAILED		DESIGN-DETAILED				DATE	
REVISIONS 1		REVISIONS 1					
REVISIONS 2		REVISIONS 2					
REVISIONS 3		REVISIONS 3					
REVISIONS 4		REVISIONS 4					
FIELD CHANGES							



I-95 NB EXIT 120 RAMP, SIDNEY



I-95 SB EXIT 120 RAMP, SIDNEY

STATE OF MAINE
 DEPARTMENT OF TRANSPORTATION
 HSIP-2058(700)
 WIN 20587.00
 HIGHWAY PLANS

PROJ. MANAGER	A. DeGrace	BY	A. DeGrace	DATE	
CHECKED-REVIEWED	A. DeGrace				SIGNATURE
DESIGNS DETAILED					P.E. NUMBER
REVISIONS 1					DATE
REVISIONS 2					
REVISIONS 3					
REVISIONS 4					
FIELD CHANGES					

STATEWIDE
 HIGHWAY RAMP
 PLANS

SHEET NUMBER
 5
 OF 10