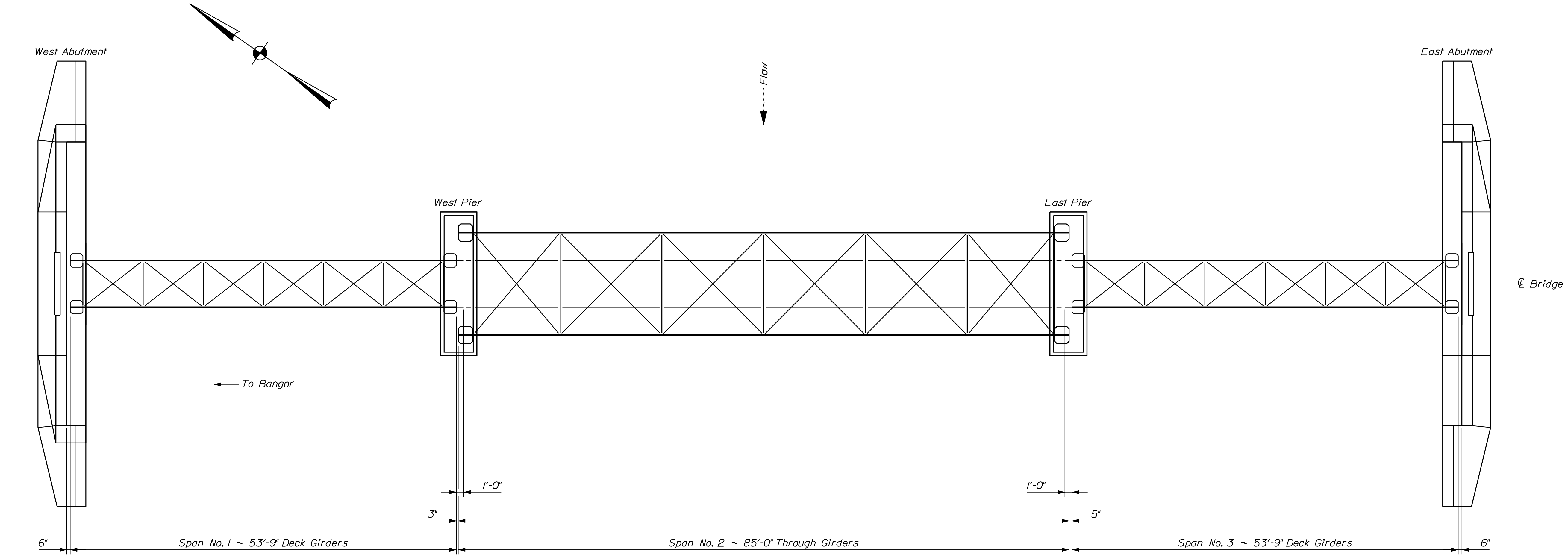


Date: 1/16/2018

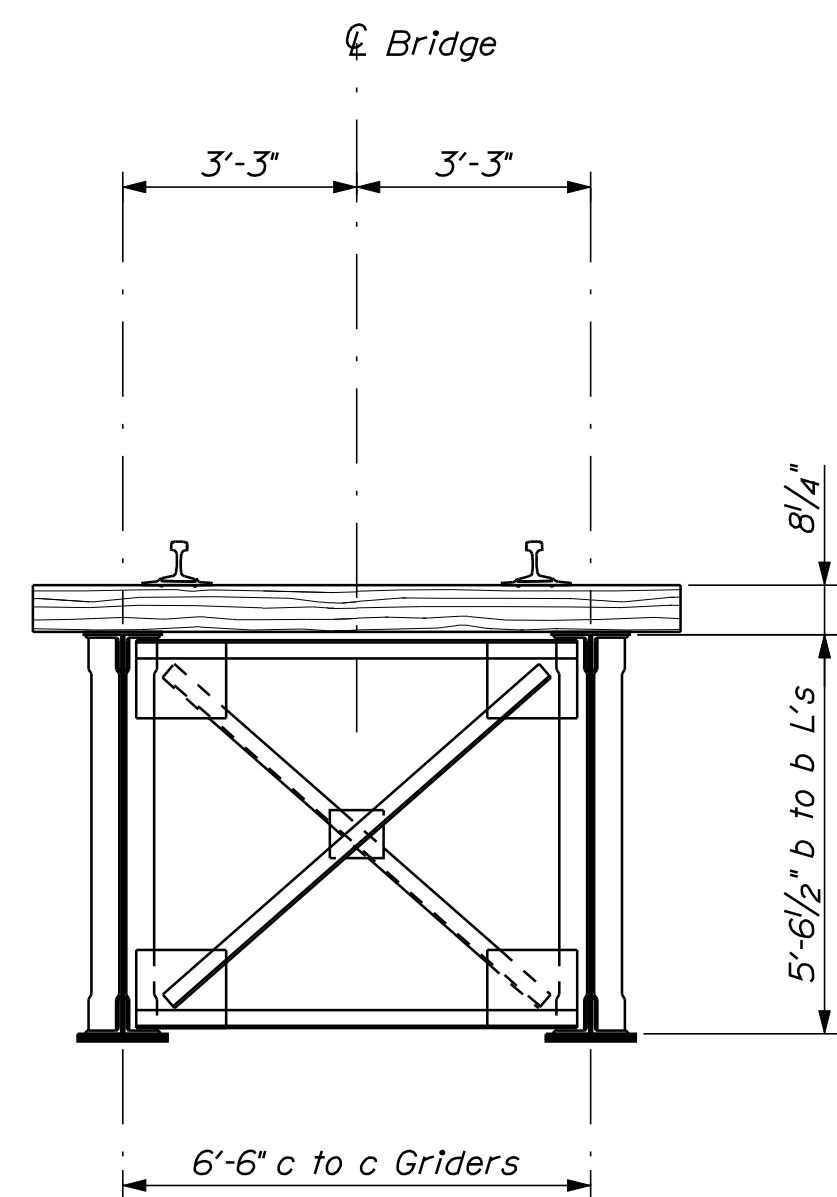
Username: Dana.Damren

Division: BRIDGE

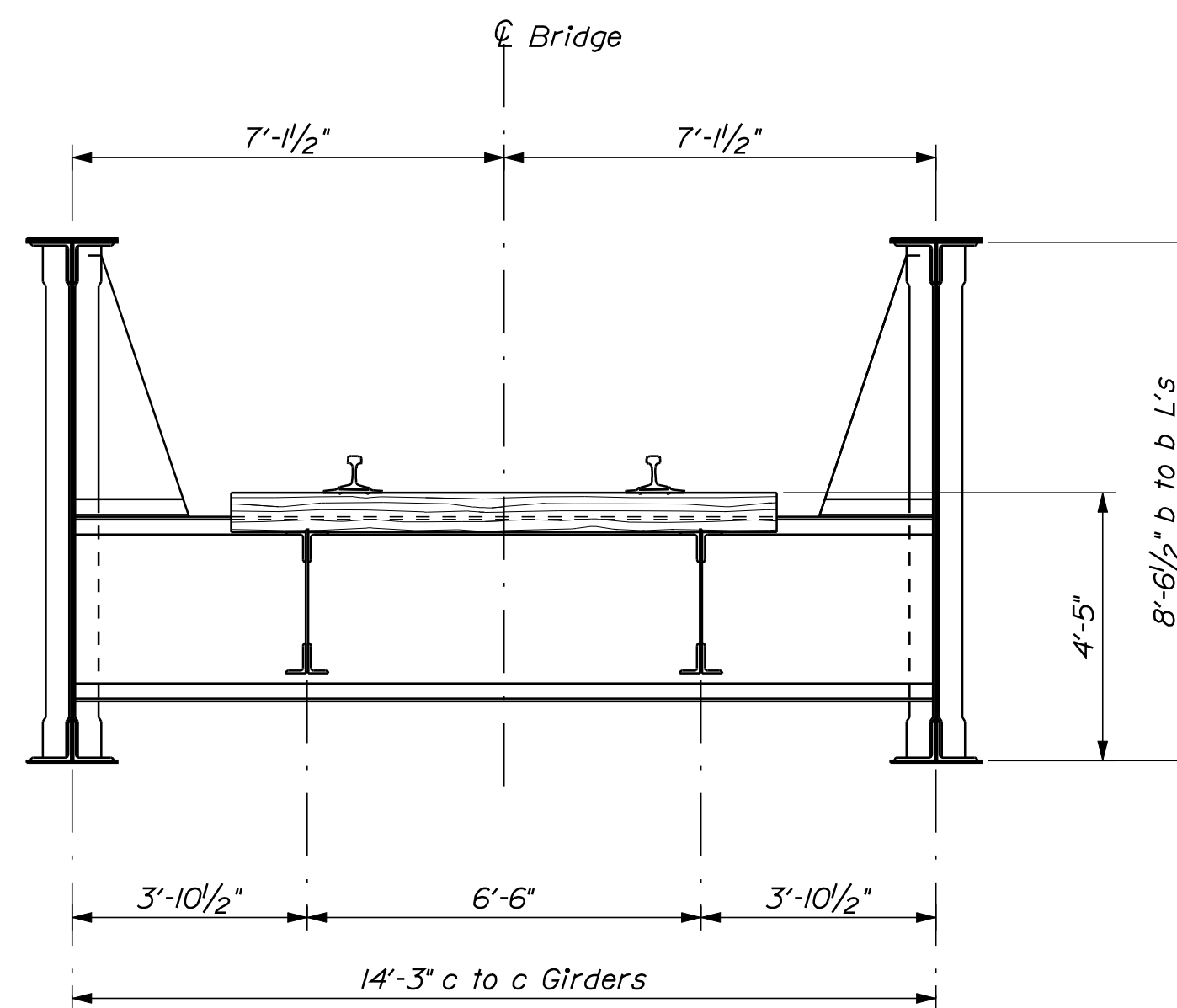
Filename: ...msto\002_GeneralPlan.dgn



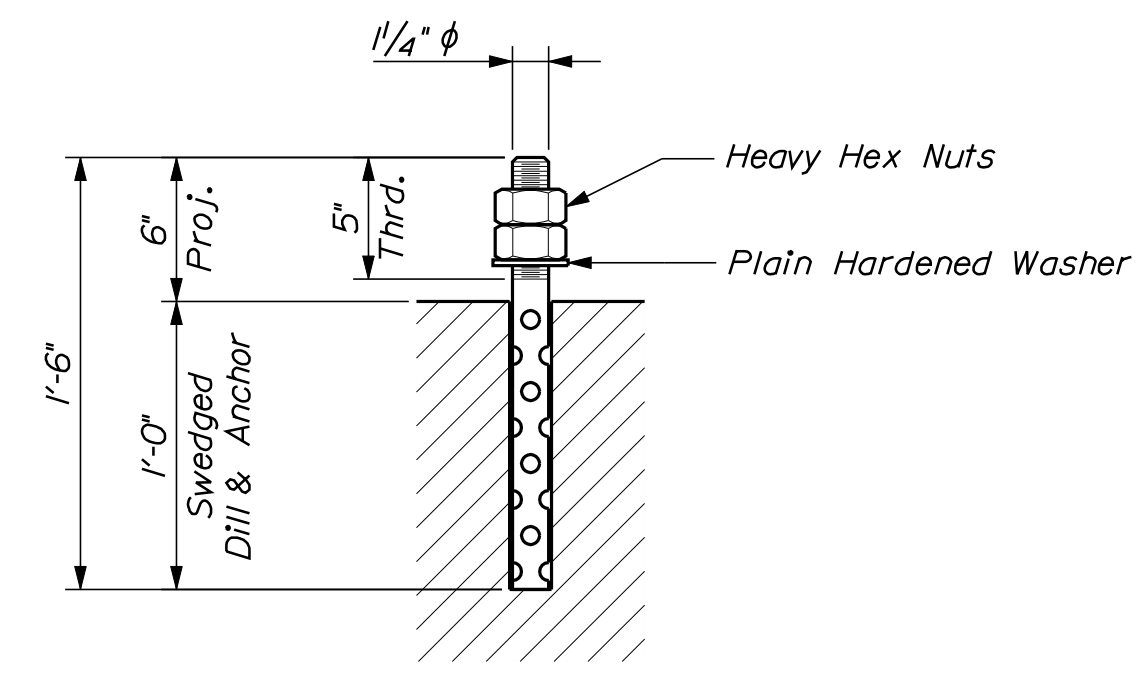
GENERAL BRIDGE PLAN



TRANSVERSE SECTION
Deck Girder Spans



TRANSVERSE SECTION
Through Girder Span



ANCHOR ROD DETAIL

STATE OF MAINE
DEPARTMENT OF TRANSPORTATION
14259.04
BRIDGE NO. 7727
WIN
14259.04
BRIDGE PLANS

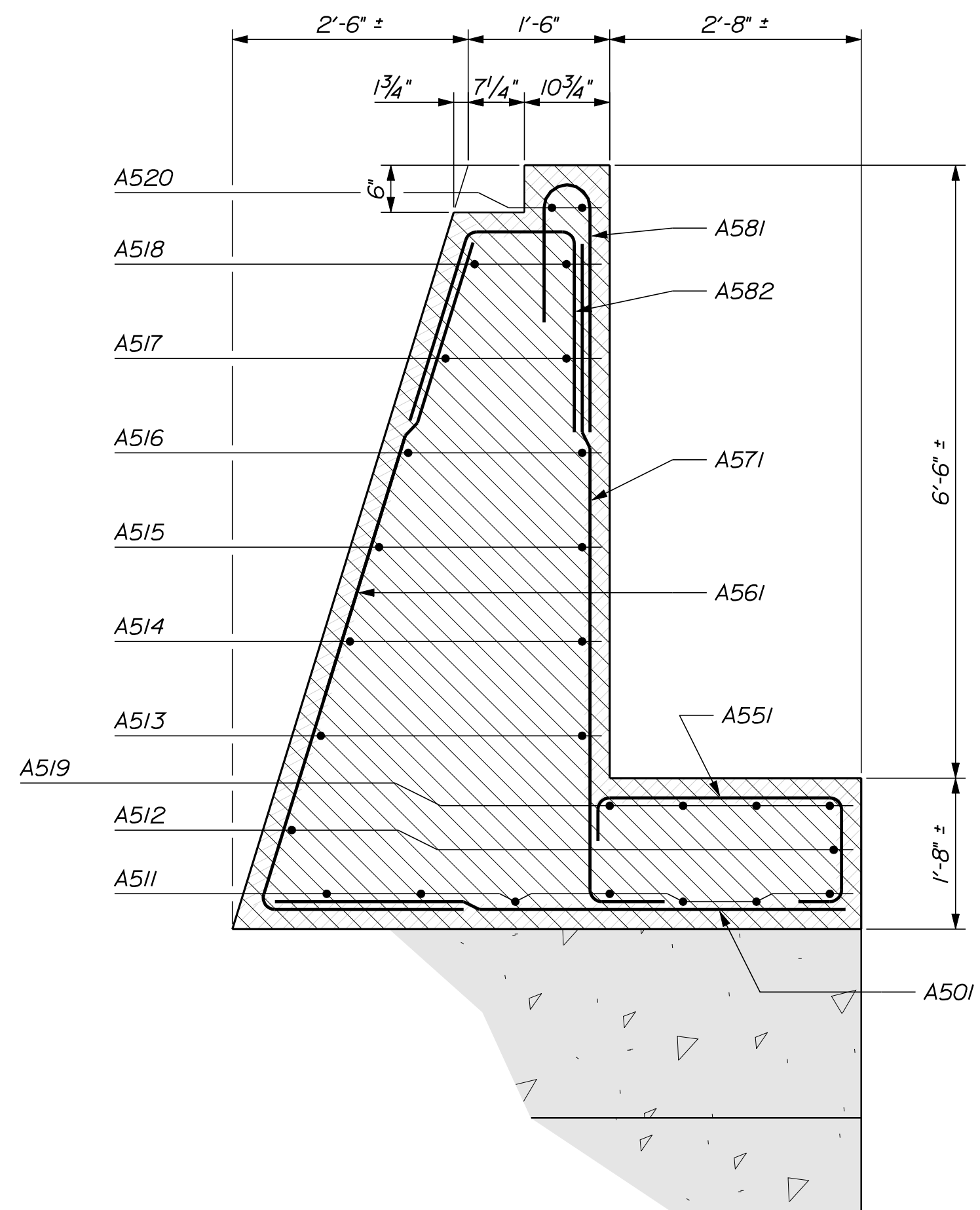
| PROJ. MANAGER | Jeffrey Tweedle | BY | D. Damren | DATE | Nov. 2016 |
|------------------|-----------------|------------------|-----------|-------------|-----------|
| DESIGN-DETAILED | B. Reeves | CHECKED-REVIEWED | | SIGNATURE | |
| DESIGNS-DETAILED | | DESIGNS-DETAILED | | P.E. NUMBER | |
| REVISIONS 1 | | REVISIONS 1 | | DATE | |
| REVISIONS 2 | | REVISIONS 2 | | | |
| REVISIONS 3 | | REVISIONS 3 | | | |
| REVISIONS 4 | | REVISIONS 4 | | | |
| FIELD CHANGES | | | | | |

UNION RIVER
HANCOCK COUNTY
ELLSWORTH
GENERAL BRIDGE PLAN

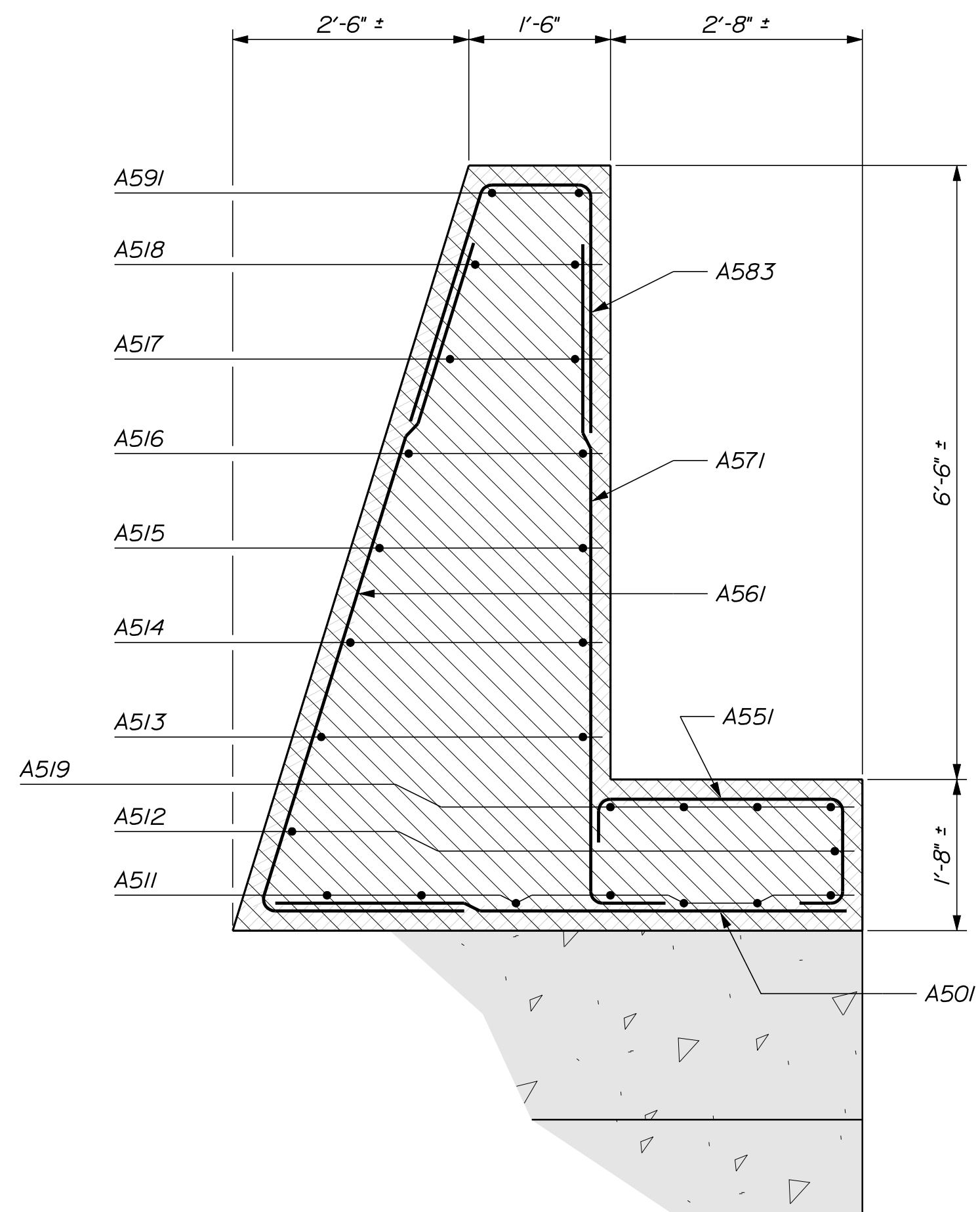
SHEET NUMBER

2

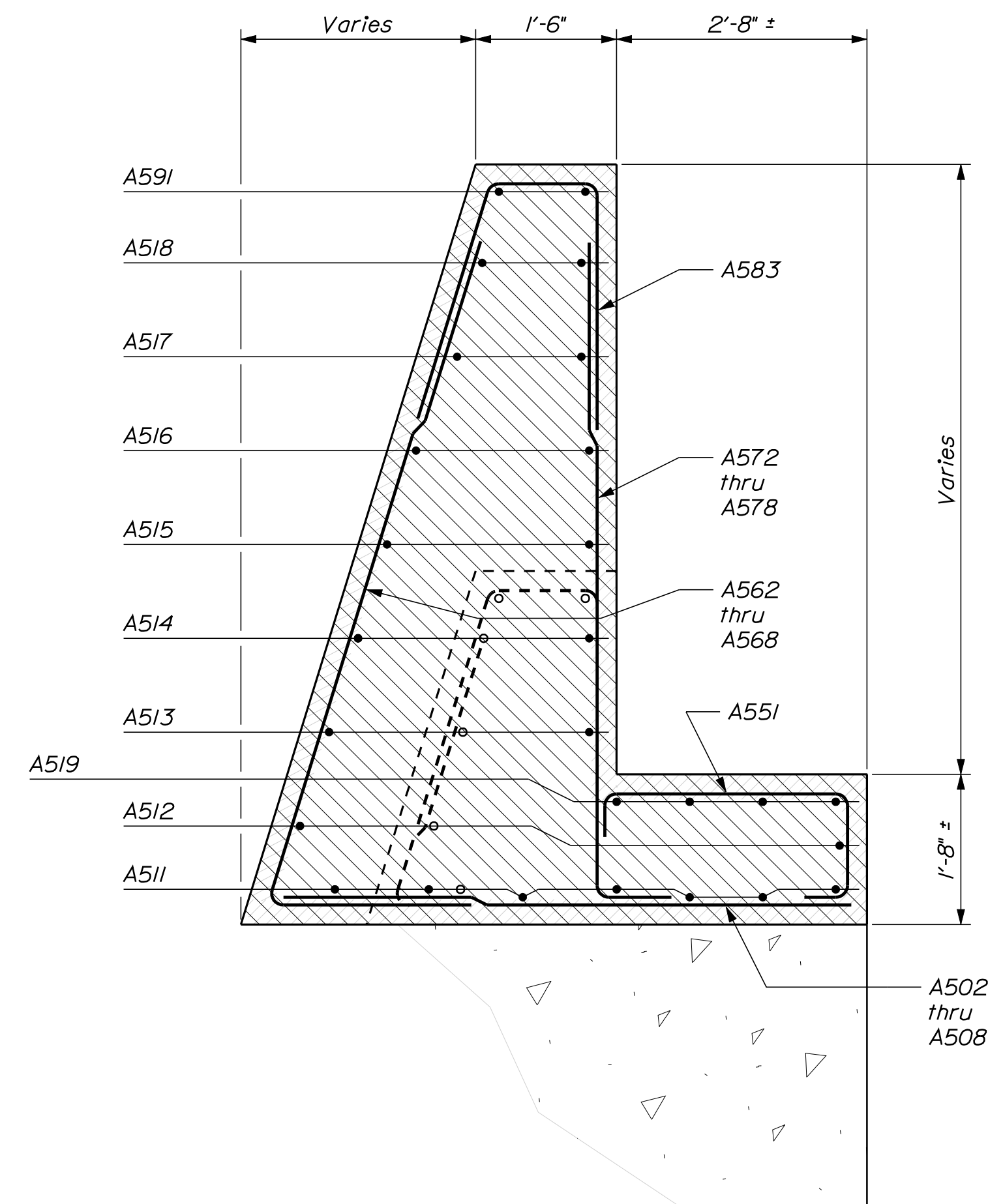
OF 8



WEST ABUTMENT SECTION
Backwall with Set "A" Reinforcing



WEST ABUTMENT SECTION
Backwall with Set "B" Reinforcing



WEST ABUTMENT SECTION
Wingwalls with Sets "C" thru "J" Reinforcing

ABUTMENT NOTES

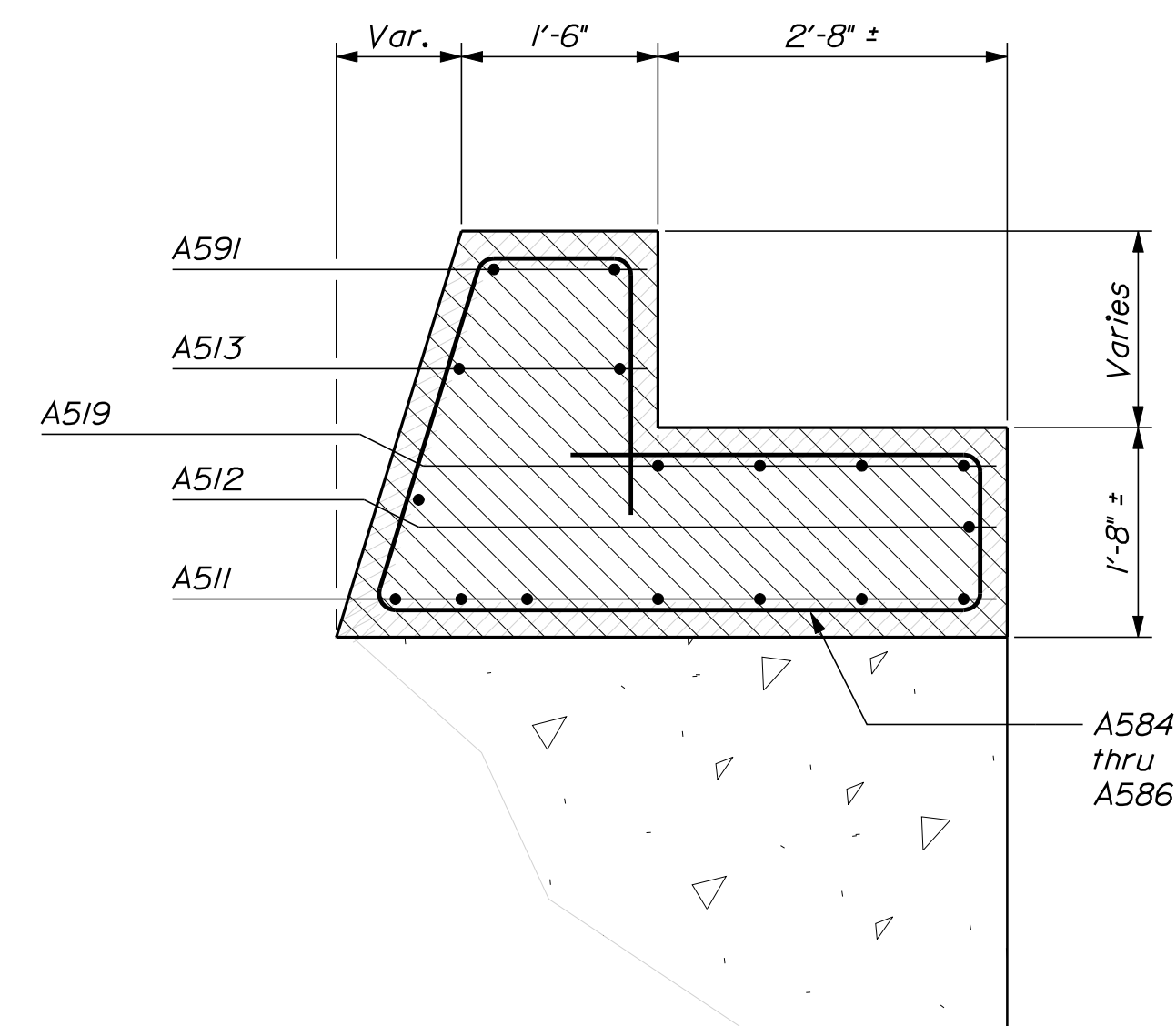
1. Reinforcing steel shall have a minimum concrete cover of 2 inches in the walls and 3 inches in the footings unless otherwise noted.
2. Construct French Drains behind the abutments and wingwalls in accordance with Standard Specifications Section 512, French Drains. Construct French Drains to daylight at each end of the wingwalls.
3. Abutments, wingwalls and their footings shall be backfilled with Granular Borrow. Pay limits will be the structural excavation limits in cut areas and a vertical plane located 10 feet behind the walls in fill areas.

SYMBOLS

- Existing Concrete (To remain)
- Existing Granite (To remain)
- Existing Concrete (To be removed)
- Proposed Concrete (In Section)

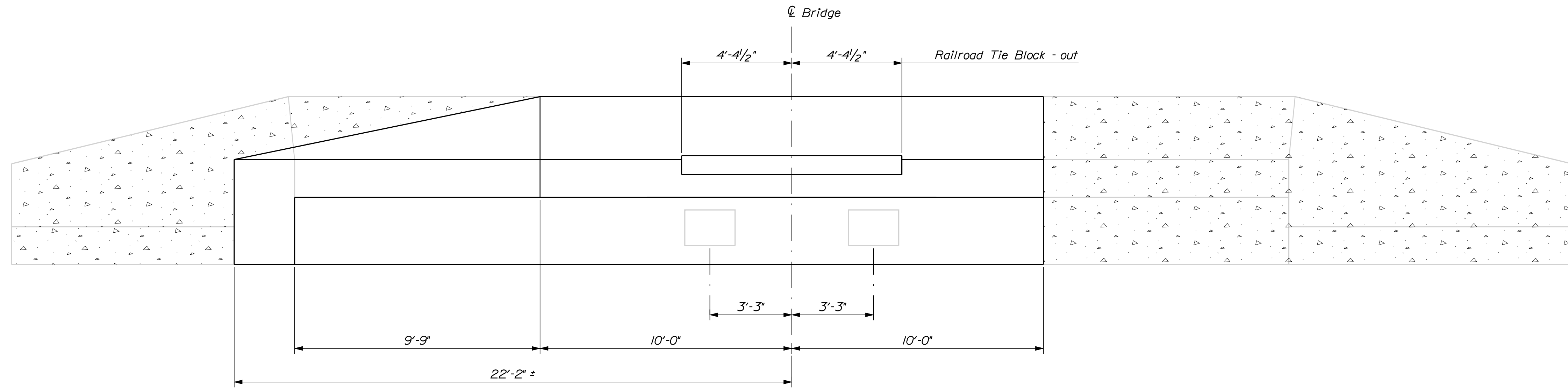
REINFORCING SET SCHEDULE

| Name | Qty. | Components |
|---------|------|---|
| Set "A" | 10 | 1 each ~ A501, A551, A561, A571, A581, A582 |
| Set "B" | 10 | 1 each ~ A501, A551, A561, A571, A583 |
| Set "C" | 2 | 1 each ~ A502, A551, A562, A572, A583 |
| Set "D" | 2 | 1 each ~ A503, A551, A563, A573, A583 |
| Set "E" | 2 | 1 each ~ A504, A551, A564, A574, A583 |
| Set "F" | 2 | 1 each ~ A505, A551, A565, A575, A583 |
| Set "G" | 2 | 1 each ~ A506, A551, A566, A576, A583 |
| Set "H" | 2 | 1 each ~ A507, A551, A567, A577, A583 |
| Set "J" | 2 | 1 each ~ A508, A551, A568, A578, A583 |



WEST ABUTMENT SECTION
Wingwall Ends

| | | |
|---|-------------------------------|---------------------------------|
| STATE OF MAINE DEPARTMENT OF TRANSPORTATION 14259.04 | WIN 14259.04 | BRIDGE NO. 7727 BRIDGE PLANS |
| UNION RIVER HANCOCK COUNTY ELLSWORTH | WEST ABUTMENT SECTIONS | |
| SHEET NUMBER 4 | OF 8 | |



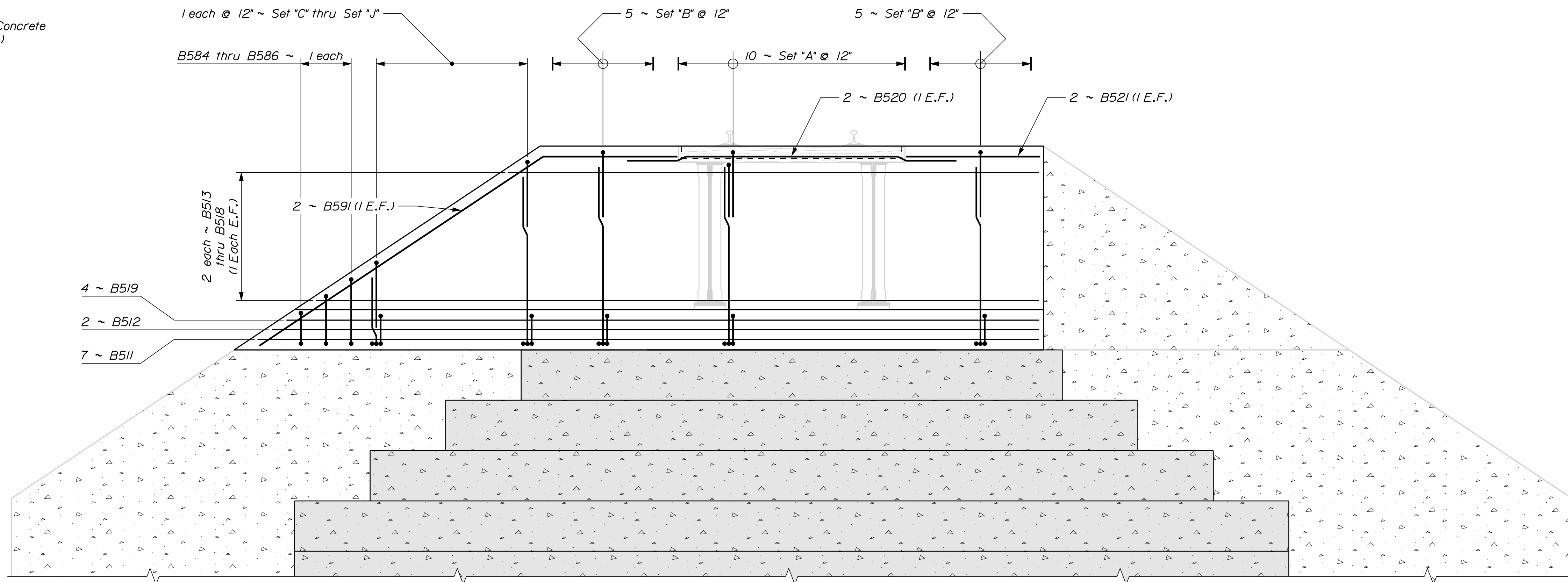
EAST ABUTMENT PLAN

SYMBOLS

- Existing Concrete (To remain)
- Existing Granite (To remain)
- Existing Concrete (To be removed)
- Proposed Concrete (In Section)

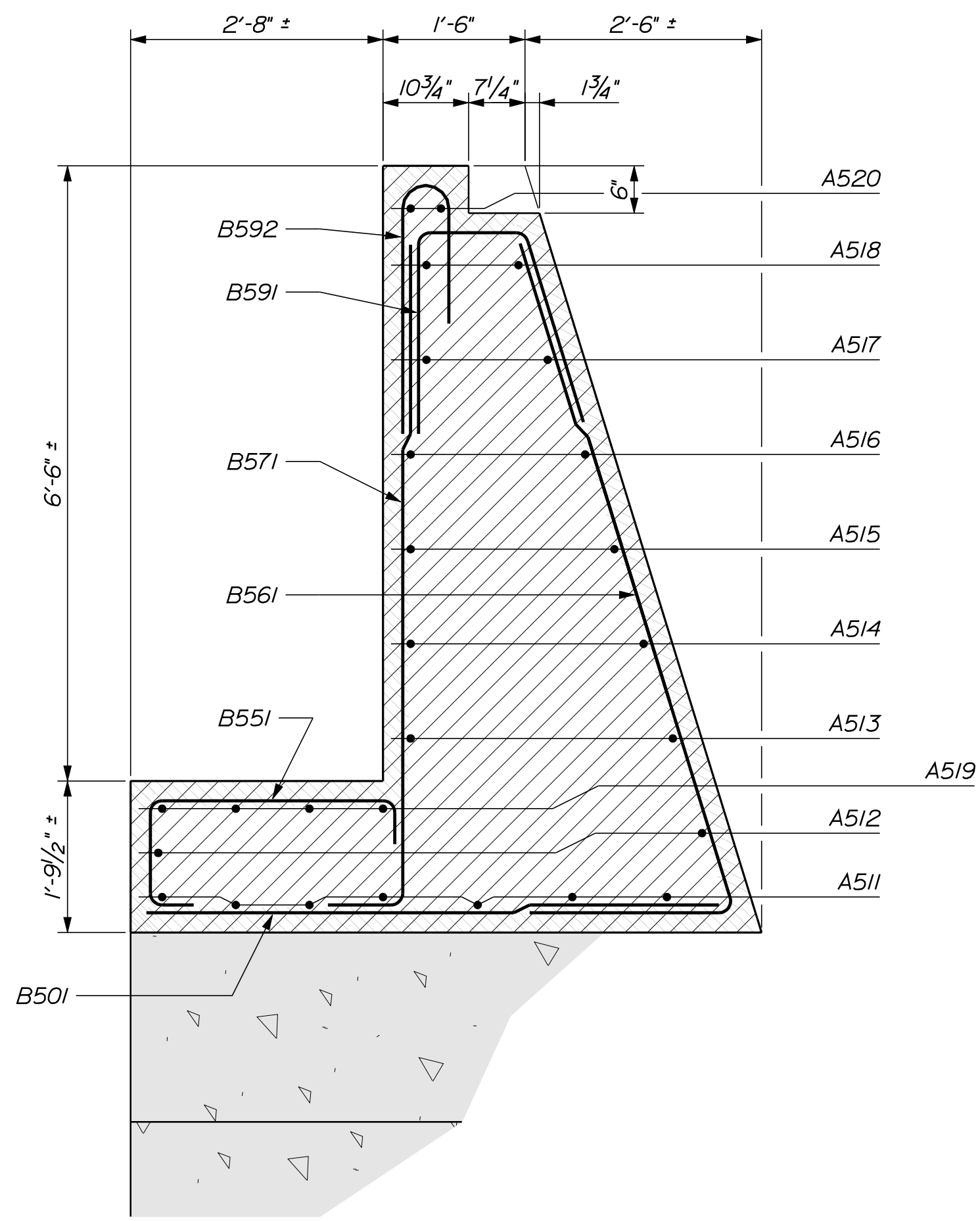
LEGEND

- N.F. = Near Face
- F.F. = Far Face
- E.F. = Each Face
- T. & B. = Top & Bottom
- Eq. Sp. = Equal Spaces

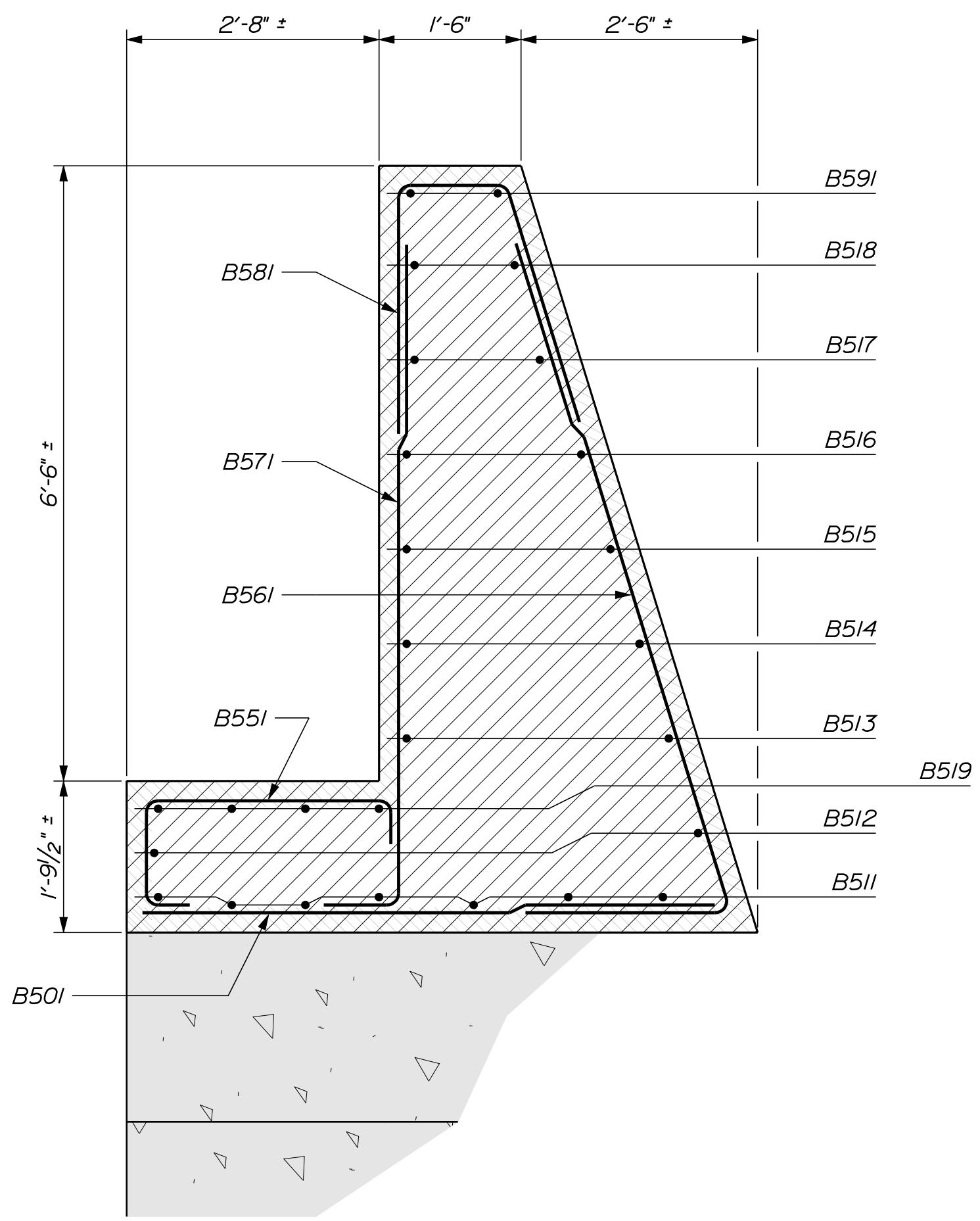


EAST ABUTMENT ELEVATION

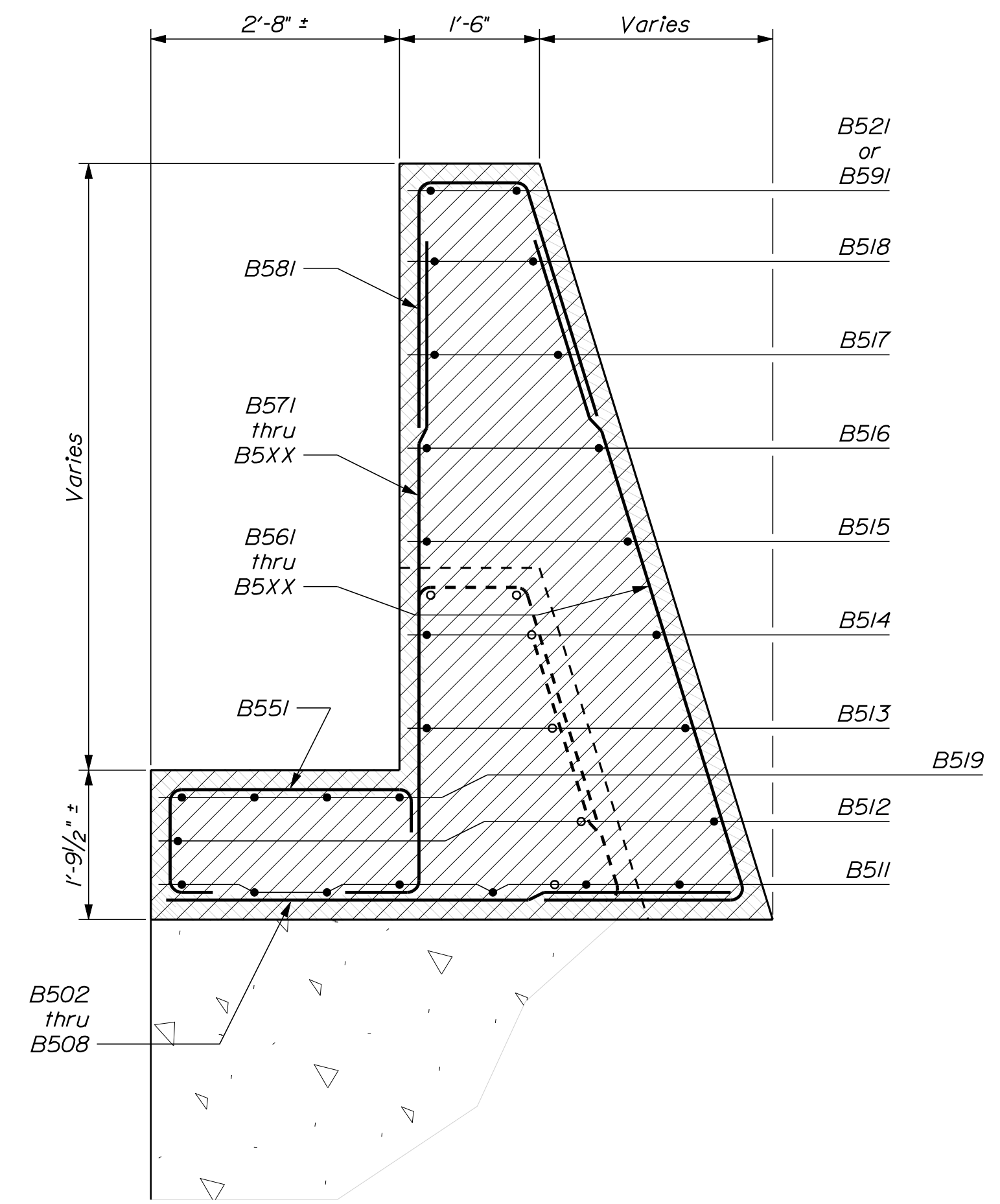
| DESIGN-REVIEWED | BY | DATE | SIGNATURE |
|-----------------|-------------|-----------|-----------|
| DESIGN-REVIEWED | D. Damren | Nov. 2016 | |
| DESIGN-REVIEWED | BY | DATE | SIGNATURE |
| DESIGN-REVIEWED | | | |
| REVISIONS | P.E. NUMBER | DATE | |
| REVISIONS 1 | | | |
| REVISIONS 2 | | | |
| REVISIONS 3 | | | |
| REVISIONS 4 | | | |
| FIELD CHANGES | | | |



EAST ABUTMENT SECTION
Backwall with Set "A" Reinforcing



EAST ABUTMENT SECTION
Backwall with Set "B" Reinforcing



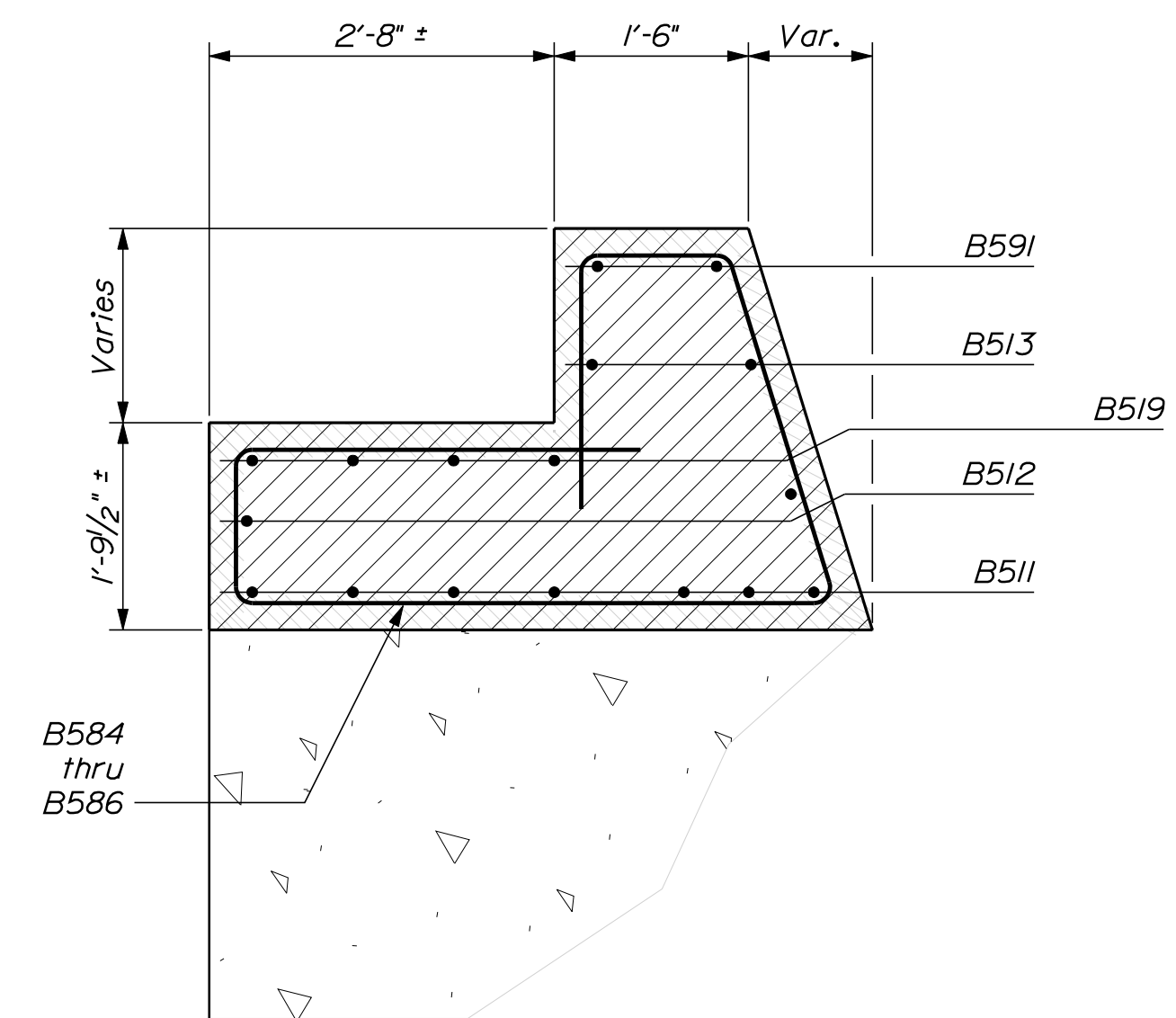
EAST ABUTMENT SECTION
Wingwall with Sets "C" thru "J" Reinforcing

SYMBOLS

- Existing Concrete (To remain)
- Existing Granite (To remain)
- Existing Concrete (To be removed)
- Proposed Concrete (In Section)

REINFORCING SET SCHEDULE

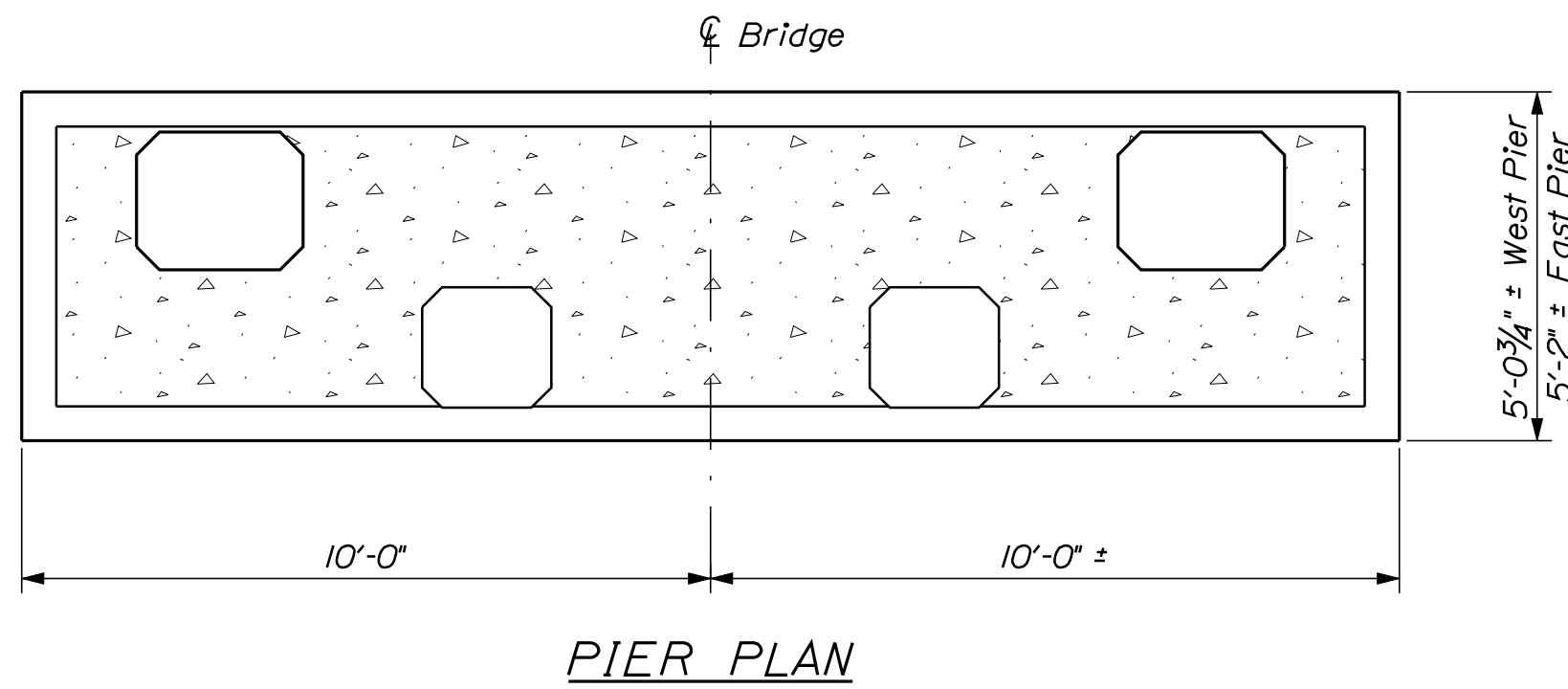
| Name | Qty. | Components |
|---------|------|---|
| Set "A" | 10 | 1 each ~ B501, B551, B561, B571, B581, B582 |
| Set "B" | 10 | 1 each ~ B501, B551, B561, B571, B583 |
| Set "C" | 1 | 1 each ~ B502, B551, B562, B572, B583 |
| Set "D" | 1 | 1 each ~ B503, B551, B563, B573, B583 |
| Set "E" | 1 | 1 each ~ B504, B551, B564, B574, B583 |
| Set "F" | 1 | 1 each ~ B505, B551, B565, B575, B583 |
| Set "G" | 1 | 1 each ~ B506, B551, B566, B576, B583 |
| Set "H" | 1 | 1 each ~ B507, B551, B567, B577, B583 |
| Set "J" | 1 | 1 each ~ B508, B551, B568, B578, B583 |



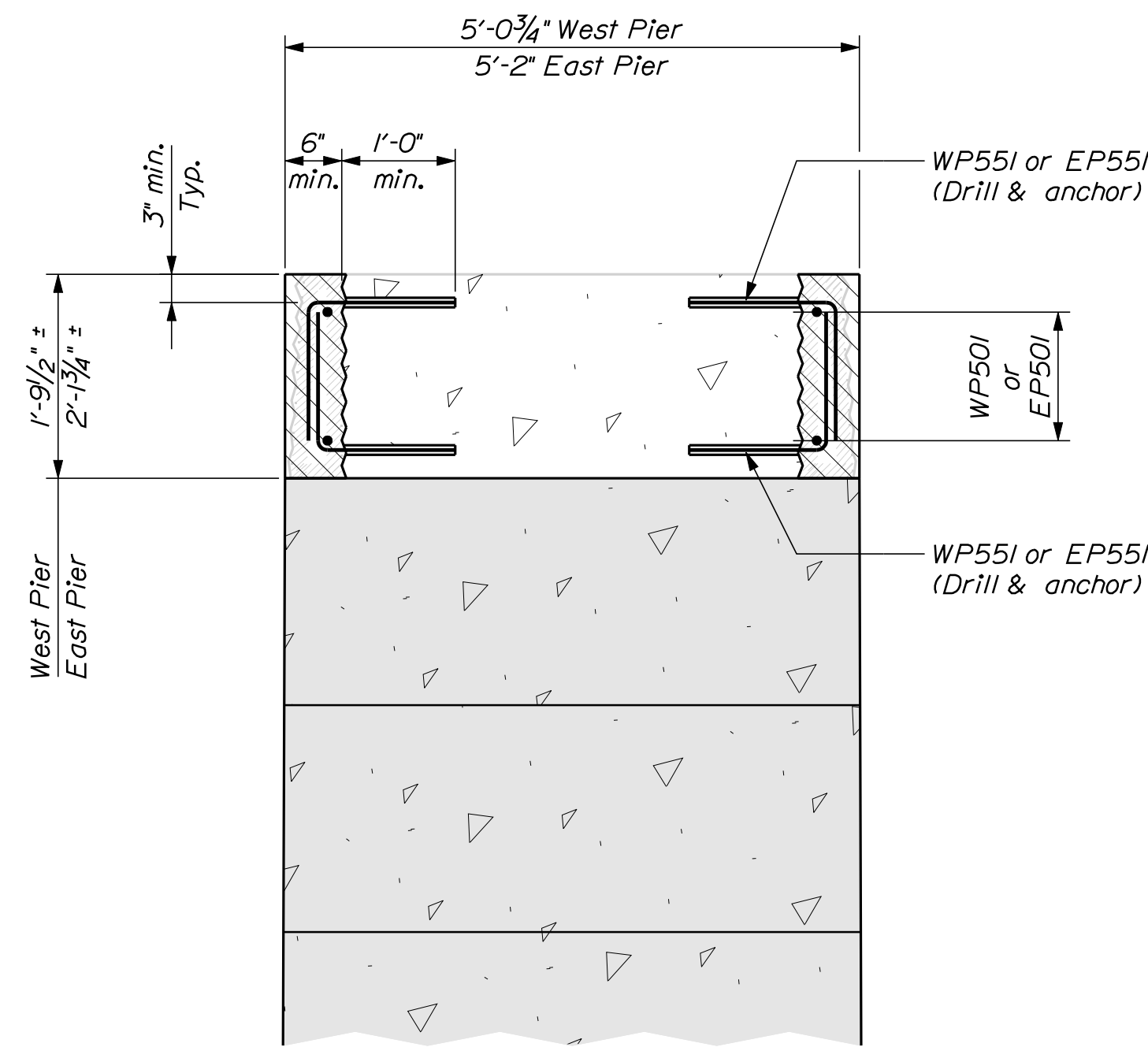
EAST ABUTMENT SECTION
Wingwall Ends

| PROJ. MANAGER | DESIGN-DETAILED | CHECKED-REVIEWED | DESIGN-DETAILED | REVISIONS 1 | REVISIONS 2 | REVISIONS 3 | REVISIONS 4 | FIELD CHANGES |
|-----------------|-----------------|------------------|-----------------|-------------|-------------|-------------|-------------|---------------|
| Jeffrey Tweedle | B. Reeves | D. Damren | Nov. 2016 | | | | | |

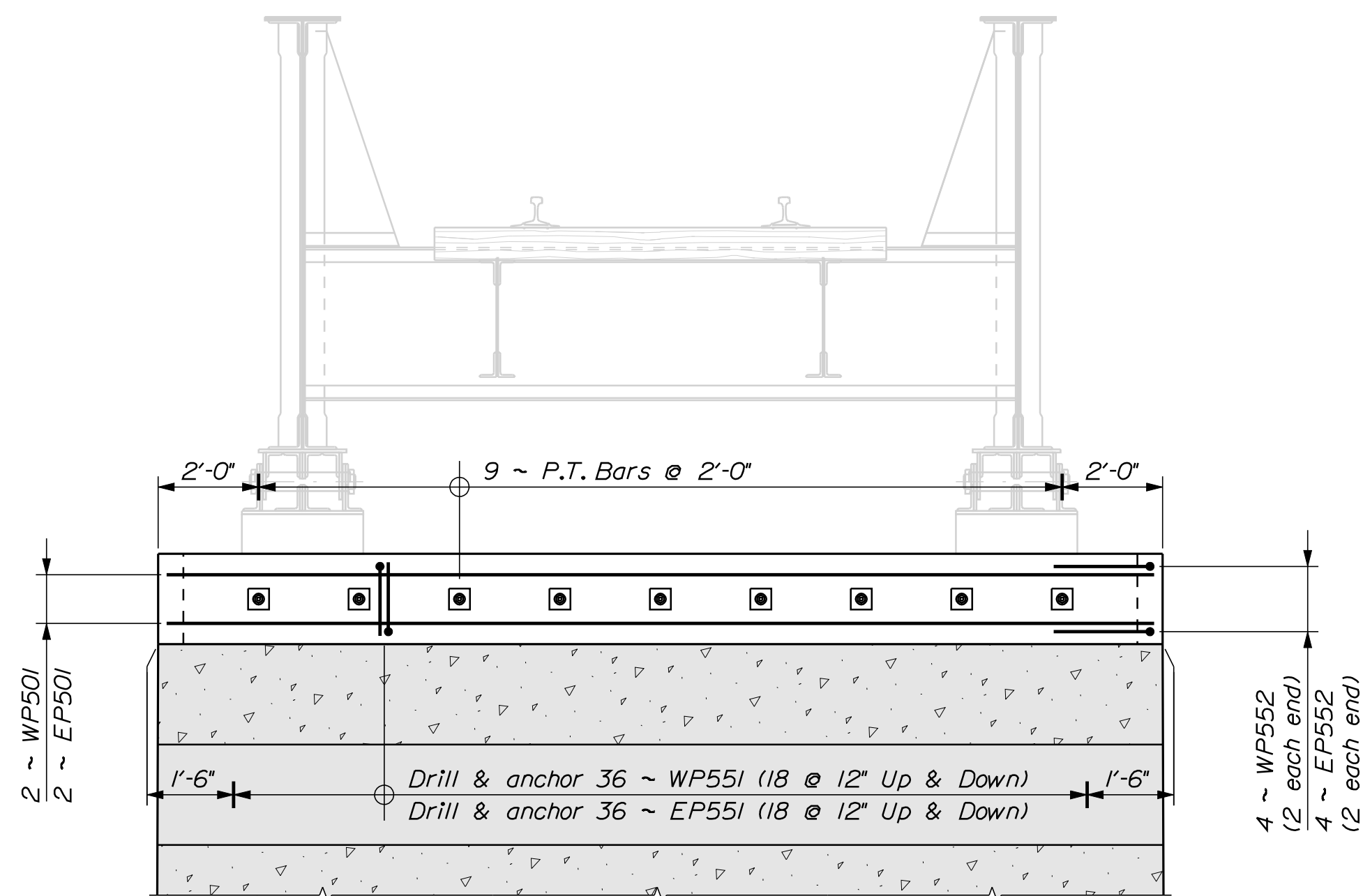
| DATE | BY | SIGNATURE | P.E. NUMBER | DATE |
|-----------|-----------|-----------|-------------|------|
| Nov. 2016 | D. Damren | | | |



PIER PLAN

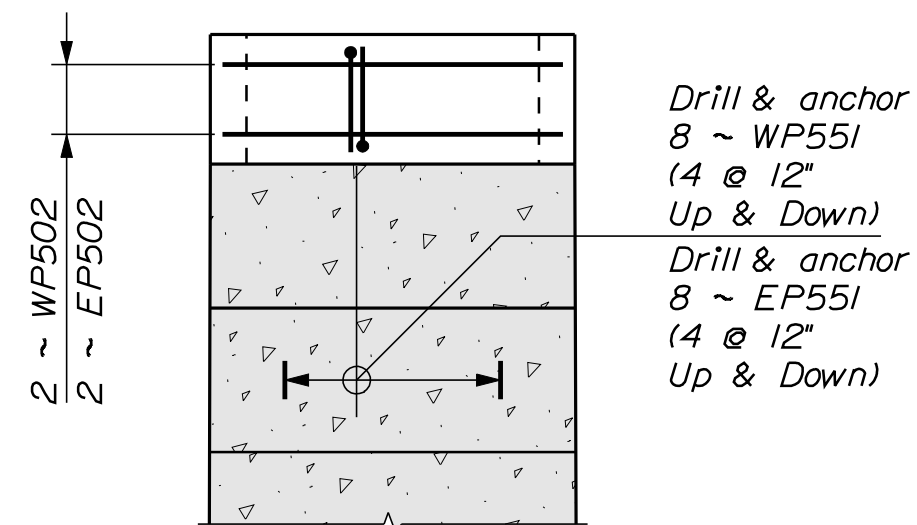


TYPICAL PIER SECTION



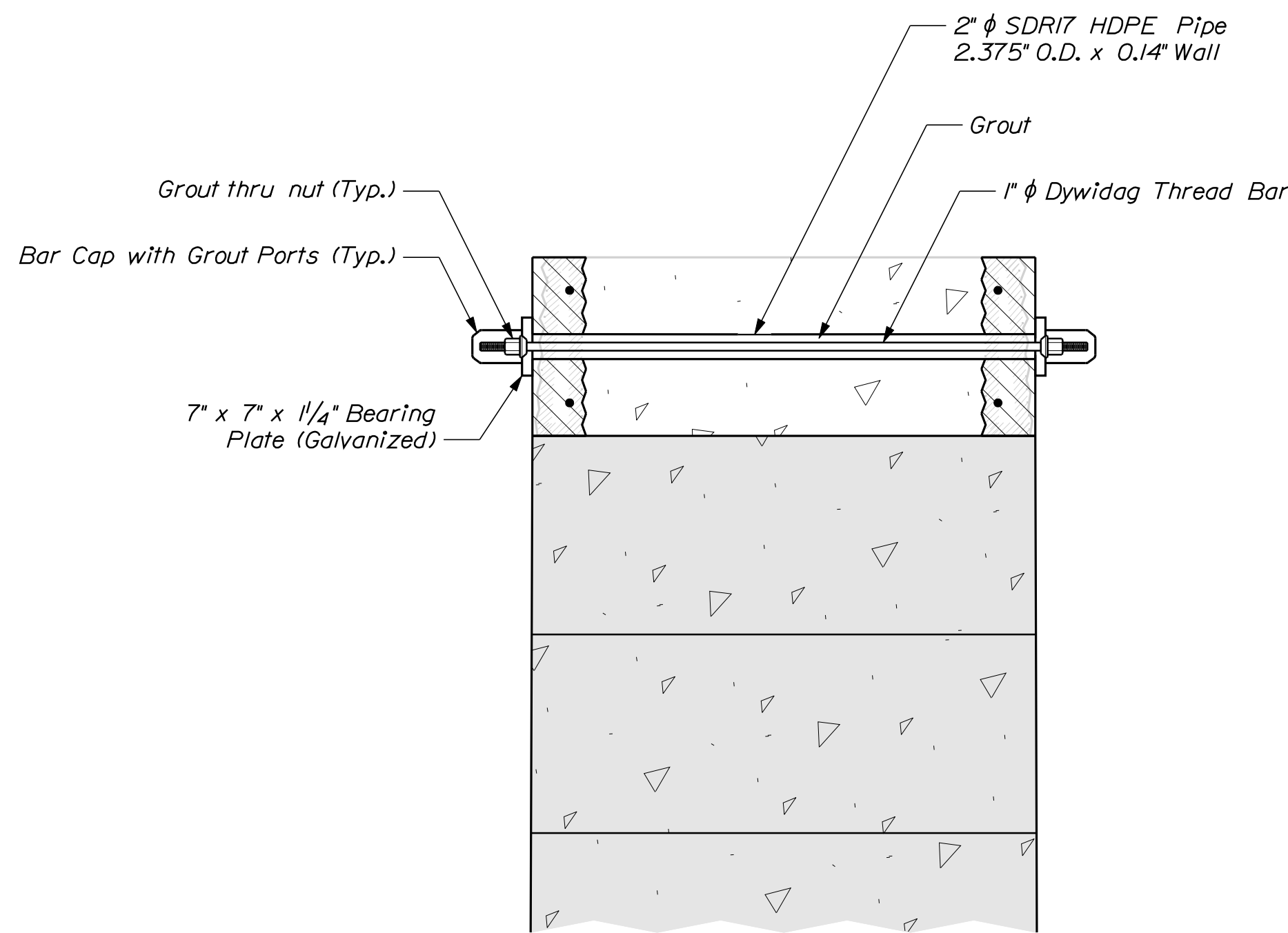
PIER ELEVATION

WP5XX = West Pier bars; EP5XX = East Pier bars
Reinforcing typical both faces of pier



PIER END ELEVATION

WP5XX = West Pier bars; EP5XX = East Pier bars
Reinforcing typical both ends of pier



PIER POST-TENSIONING SECTION

PIER REPAIR PROCEDURE

1. Set up an appropriate contamination/debris collection system.
2. Prevent feathered edges of concrete repair. Indicated areas are the approximate anticipated removal limits and are subject to change.
3. After the removal of the concrete, the surface area shall be cleaned of loose debris using high pressure water or air.
4. Exposed rebar shall be cleaned per an SSPC-SP-6 to remove loose scaly rust. If it is determined by the Resident that the rust is tight and bonded, the cleaning may be omitted.
5. Core 2 1/2" diameter holes as shown for post tensioning. Insert 2" HDPE duct.
6. Drill and anchor rebars WP551 and EP551 as indicated on the plans. Bars shall be embedded a minimum of 12". Grout shall be from MaineDOT approved materials list.
7. Once all new anchored rebar and ducts are in place the surface shall be cleaned of loose debris prior to the placement of any new concrete.
8. Install all new additional reinforcement.
9. Construct and place forms and block outs.
10. Place new concrete. Formwork shall be placed in a manner to allow the concrete to be vibrated and reach all locations. Formwork shall be inspected and approved by the Resident prior to the placement of concrete.
11. Allow concrete to cure to 4350 psi.
12. Install plate anchorage assembly and thread bars.
13. Grout duct through grout tubes using an approved cable grout. Grout from one end only. Grout only one bar at a time. Remove nipple after the grout has hardened and insert plug.

PIER NOTES

1. The contractor shall provide an acceptable means of access at the pier to allow the Resident to safely perform an inspection of all repair work to the concrete. Payment for access will be considered incidental to the lump sum Item No. 535.64, Post Tensioning System.
2. Reinforcing steel shall have a minimum concrete cover of 2 inches.
3. Lengths given in the Reinforcing Steel Schedule for bars WP551 and EP551 assume concrete dimensions as shown in the Typical Pier Section. If more concrete is removed, longer horizontal leg lengths will be required.
4. Chamfer all exposed edges of concrete 3/4" unless noted otherwise.
5. All unsound concrete shall be removed to sound concrete as directed by the Resident.
6. Thread Bars shall be tensioned and locked off at 89k.
7. All anchor plates shall conform to ASTM A 709, Grade 50 and shall be galvanized in accordance with ASTM A 123.
8. All cable grout shall conform to one of the following:
SikaGrout 300PT
Master Flow 816
Five Star Special Grout 400
Approved Equal
9. Use Class A/Method C concrete per Standard Specification Section 502. Concrete shall have a minimum of 7 days cure time and shall reach a compressive strength of 4350 psi before bars may be tensioned.

Date: 1/16/2018

Username: Dana.Damren

Division: BRIDGE

Filename: ... \16\bridge\msta\007_Pier.dgn

| PROJ. MANAGER | Jeffrey Tweedle | DATE | Nov. 2016 |
|------------------|-----------------|-------------|-----------|
| CHECKED-REVIEWED | B. Reeves | BY | D. Damren |
| DESIGN DETAILED | | SIGNATURE | |
| REVISIONS 1 | | P.E. NUMBER | |
| REVISIONS 2 | | DATE | |
| REVISIONS 3 | | | |
| REVISIONS 4 | | | |
| FIELD CHANGES | | | |

Date: 1/16/2018

Username: Dana Damren

Division: BRIDGE

Filename: ... \16\bridge\msta\008_Rebar.dgn

| STRAIGHT BARS | | | | | | | | BENT BARS | | | | | | | | | | | | | | | |
|---------------|------|--------|-------------------------------|-----------|------|--------|--------------------|---------------|------|--------|------|--------|--------|--------|---------|-------|-------|------------|-----------|-------|-------|-------------------|------------------------------|
| MARK | QTY. | LENGTH | LOCATION | MARK | QTY. | LENGTH | LOCATION | MARK | QTY. | LENGTH | TYPE | A | B | C | D | E | F | G | H | O | R | LOCATION | |
| West Abutment | | | | West Pier | | | | West Abutment | | | | | | | | | | | | | | | |
| A501 | 20 | 6'-2" | Horizontal ~ Sets "A" & "B" | WP501 | 4 | 19'-6" | Horizontal ~ Sides | A551 | 34 | 5'-0" | H-3 | 0'-6" | 2'-9" | 1'-3" | -- | -- | -- | 0'-6" | -- | -- | -- | -- | Vertical ~ Sets "A" thru "J" |
| A502 | 2 | 6'-1" | Horizontal ~ Set "C" | WP502 | 4 | 5'-8" | Horizontal ~ Ends | | | | | | | | | | | | | | | | |
| A503 | 2 | 5'-10" | Horizontal ~ Set "D" | | | | | A561 | 20 | 9'-9" | LB | 7'-6" | 2'-3" | -- | -- | -- | -- | 2'-2 1/2" | -- | -- | -- | -- | Vertical ~ Sets "A" & "B" |
| A504 | 2 | 5'-8" | Horizontal ~ Set "E" | | | | | A562 | 2 | 9'-5" | LB | 7'-2" | 2'-3" | -- | -- | -- | -- | 2'-1 1/2" | -- | -- | -- | -- | Vertical ~ Set "C" |
| A505 | 2 | 5'-5" | Horizontal ~ Set "F" | | | | | A563 | 2 | 8'-9" | LB | 6'-6" | 2'-3" | -- | -- | -- | -- | 1'-11" | -- | -- | -- | -- | Vertical ~ Set "D" |
| A506 | 2 | 5'-3" | Horizontal ~ Set "G" | | | | | A564 | 2 | 8'-1" | LB | 5'-10" | 2'-3" | -- | -- | -- | -- | 1'-8 1/2" | -- | -- | -- | -- | Vertical ~ Set "E" |
| A507 | 2 | 5'-0" | Horizontal ~ Set "H" | | | | | A565 | 2 | 7'-5" | LB | 5'-2" | 2'-3" | -- | -- | -- | -- | 1'-6" | -- | -- | -- | -- | Vertical ~ Set "F" |
| A508 | 2 | 4'-10" | Horizontal ~ Set "J" | | | | | A566 | 2 | 6'-9" | LB | 4'-6" | 2'-3" | -- | -- | -- | -- | 1'-3 1/2" | -- | -- | -- | -- | Vertical ~ Set "G" |
| | | | | EP501 | 4 | 19'-6" | Horizontal ~ Sides | A567 | 2 | 6'-1" | LB | 3'-10" | 2'-3" | -- | -- | -- | -- | 1'-1" | -- | -- | -- | -- | Vertical ~ Set "H" |
| | | | | EP502 | 4 | 5'-9" | Horizontal ~ Ends | A568 | 2 | 5'-5" | LB | 3'-2" | 2'-3" | -- | -- | -- | -- | 0'-10 1/2" | -- | -- | -- | -- | Vertical ~ Set "J" |
| A511 | 10 | 42'-6" | Horiz. ~ Backwall & Wingwalls | | | | | A571 | 20 | 8'-0" | L | 7'-2" | 0'-10" | -- | -- | -- | -- | -- | -- | -- | -- | -- | Vertical ~ Sets "A" & "B" |
| A512 | 2 | 40'-6" | Horiz. ~ Backwall & Wingwalls | | | | | A572 | 2 | 7'-8" | L | 6'-10" | 0'-10" | -- | -- | -- | -- | -- | -- | -- | -- | -- | Vertical ~ Set "C" |
| A513 | 2 | 37'-6" | Horiz. ~ Backwall & Wingwalls | | | | | A573 | 2 | 7'-0" | L | 6'-2" | 0'-10" | -- | -- | -- | -- | -- | -- | -- | -- | -- | Vertical ~ Set "D" |
| A514 | 2 | 34'-6" | Horiz. ~ Backwall & Wingwalls | | | | | A574 | 2 | 6'-4" | L | 5'-6" | 0'-10" | -- | -- | -- | -- | -- | -- | -- | -- | -- | Vertical ~ Set "E" |
| A515 | 2 | 31'-6" | Horiz. ~ Backwall & Wingwalls | | | | | A575 | 2 | 5'-8" | L | 4'-10" | 0'-10" | -- | -- | -- | -- | -- | -- | -- | -- | -- | Vertical ~ Set "F" |
| A516 | 2 | 28'-6" | Horiz. ~ Backwall & Wingwalls | | | | | A576 | 2 | 5'-0" | L | 4'-2" | 0'-10" | -- | -- | -- | -- | -- | -- | -- | -- | -- | Vertical ~ Set "G" |
| A517 | 2 | 25'-6" | Horiz. ~ Backwall & Wingwalls | | | | | A577 | 2 | 4'-4" | L | 3'-6" | 0'-10" | -- | -- | -- | -- | -- | -- | -- | -- | -- | Vertical ~ Set "H" |
| A518 | 2 | 22'-6" | Horiz. ~ Backwall & Wingwalls | | | | | A578 | 2 | 3'-8" | L | 2'-10" | 0'-10" | -- | -- | -- | -- | -- | -- | -- | -- | -- | Vertical ~ Set "J" |
| A519 | 4 | 40'-0" | Horizontal ~ Bridge Seat | | | | | | | | | | | | | | | | | | | | |
| A520 | 2 | 13'-0" | Horizontal ~ Backwall | | | | | | | | | | | | | | | | | | | | |
| East Abutment | | | | East Pier | | | | East Abutment | | | | | | | | | | | | | | | |
| B501 | 20 | 6'-2" | Horizontal ~ Sets "A" & "B" | | | | | A581 | 10 | 4'-6" | PR | 1'-3" | 0'-9" | 2'-6" | -- | -- | -- | -- | -- | 0'-6" | 0'-3" | -- | Vertical ~ Set "A" |
| B502 | 1 | 6'-1" | Horizontal ~ Set "C" | | | | | A582 | 10 | 5'-9" | SC | 0 | 2'-2" | 1'-4" | 2'-3" | -- | -- | 0 | -- | 2'-0" | -- | -- | Vertical ~ Set "A" |
| B503 | 1 | 5'-10" | Horizontal ~ Set "D" | | | | | A883 | 24 | 6'-6" | SC | 0 | 2'-8" | 1'-2" | 2'-9" | -- | -- | 0 | -- | 2'-0" | -- | -- | Vertical ~ Sets "B" thru "J" |
| B504 | 1 | 5'-8" | Horizontal ~ Set "E" | | | | | A584 | 2 | 15'-0" | EP | 2'-0" | 1'-2" | 2'-10" | 4'-7" | 1'-3" | 3'-2" | -- | 0'-10" | -- | -- | End of Wingwall | |
| B505 | 1 | 5'-5" | Horizontal ~ Set "F" | | | | | A585 | 2 | 13'-6" | EP | 1'-4" | 1'-2" | 2'-2" | 4'-5" | 1'-3" | 3'-2" | -- | 0'-7 1/2" | -- | -- | End of Wingwall | |
| B506 | 1 | 5'-3" | Horizontal ~ Set "G" | | | | | A586 | 2 | 12'-0" | EP | 0'-8" | 1'-2" | 1'-6" | 4'-3" | 1'-3" | 3'-2" | -- | 0'-5" | -- | -- | End of Wingwall | |
| B507 | 1 | 5'-0" | Horizontal ~ Set "H" | | | | | | | | | | | | | | | | | | | | |
| B508 | 1 | 4'-10" | Horizontal ~ Set "J" | | | | | A591 | 4 | 19'-2" | V | -- | -- | -- | 13'-10" | 5'-4" | -- | -- | 3'-0" | -- | -- | Tops of Wingwalls | |
| | | | | | | | | East Abutment | | | | | | | | | | | | | | | |
| B511 | 10 | 42'-6" | Horiz. ~ Backwall & Wingwalls | | | | | B551 | 27 | 5'-0" | H-3 | 0'-6" | 2'-9" | 1'-3" | -- | -- | -- | 0'-6" | -- | -- | -- | -- | Vertical ~ Sets "A" thru "J" |
| B512 | 2 | 40'-6" | Horiz. ~ Backwall & Wingwalls | | | | | | | | | | | | | | | | | | | | |
| B513 | 2 | 37'-6" | Horiz. ~ Backwall & Wingwalls | | | | | B561 | 20 | 9'-9" | LB | 7'-6" | 2'-3" | -- | -- | -- | -- | 2'-2 1/2" | -- | -- | -- | -- | Vertical ~ Sets "A" & "B" |
| B514 | 2 | 34'-6" | Horiz. ~ Backwall & Wingwalls | | | | | B562 | 1 | 9'-5" | LB | 7'-2" | 2'-3" | -- | -- | -- | -- | 2'-1 1/2" | -- | -- | -- | -- | Vertical ~ Set "C" |
| B515 | 2 | 31'-6" | Horiz. ~ Backwall & Wingwalls | | | | | B563 | 1 | 8'-9" | LB | 6'-6" | 2'-3" | -- | -- | -- | -- | 1'-11" | -- | -- | -- | -- | Vertical ~ Set "D" |
| B516 | 2 | 28'-6" | Horiz. ~ Backwall & Wingwalls | | | | | B564 | 1 | 8'-1" | LB | 5'-10" | 2'-3" | -- | -- | -- | -- | 1'-8 1/2" | -- | -- | -- | -- | Vertical ~ Set "E" |
| B517 | 2 | 25'-6" | Horiz. ~ Backwall & Wingwalls | | | | | B565 | 1 | 7'-5" | LB | 5'-2" | 2'-3" | -- | -- | -- | -- | 1'-6" | -- | -- | -- | -- | Vertical ~ Set "F" |
| B518 | 2 | 22'-6" | Horiz. ~ Backwall & Wingwalls | | | | | B566 | 1 | 6'-9" | LB | 4'-6" | 2'-3" | -- | -- | -- | -- | 1'-3 1/2" | -- | -- | -- | -- | Vertical ~ Set "G" |
| B519 | 4 | 40'-0" | Horizontal ~ Bridge Seat | | | | | B567 | 1 | 6'-1" | LB | 3'-10" | 2'-3" | -- | -- | -- | -- | 1'-1" | -- | -- | -- | -- | Vertical ~ Set "H" |
| B520 | 2 | 13'-0" | Horizontal ~ Backwall | | | | | B568 | 1 | 5'-5" | LB | 3'-2" | 2'-3" | -- | -- | -- | -- | 0'-10 1/2" | -- | -- | -- | -- | Vertical ~ Set "J" |
| B521 | 2 | 5'-3" | Horizontal ~ Backwall | | | | | | | | | | | | | | | | | | | | |
| | | | | | | | | B571 | 20 | 8'-0" | L | 7'-2" | 0'-10" | -- | -- | -- | -- | -- | -- | -- | -- | -- | Vertical ~ Sets "A" & "B" |
| | | | | | | | | B572 | 1 | 7'-8" | L | 6'-10" | 0'-10" | -- | -- | -- | -- | -- | -- | -- | -- | -- | Vertical ~ Set "C" |
| | | | | | | | | B573 | 1 | 7'-0" | L | 6'-2" | 0'-10" | -- | -- | -- | -- | -- | -- | -- | -- | -- | Vertical ~ Set "D" |
| | | | | | | | | B574 | 1 | 6'-4" | L | 5'-6" | 0'-10" | -- | -- | -- | -- | -- | -- | -- | -- | -- | Vertical ~ Set "E" |
| | | | | | | | | B575 | 1 | 5'-8" | L | 4'-10" | 0'-10" | -- | -- | -- | -- | -- | -- | -- | -- | -- | Vertical ~ Set "F" |
| | | | | | | | | B576 | 1 | 5'-0" | L | 4'-2" | 0'-10" | -- | -- | -- | -- | -- | -- | -- | -- | -- | Vertical ~ Set "G" |
| | | | | | | | | B577 | 1 | 4'-4" | L | 3'-6" | 0'-10" | -- | -- | -- | -- | -- | -- | -- | -- | -- | Vertical ~ Set "H" |
| | | | | | | | | B578 | 1 | 3'-8" | L | 2'-10" | 0'-10" | -- | -- | -- | -- | -- | -- | -- | -- | -- | Vertical ~ Set "J" |
| | | | | | | | | | | | | | | | | | | | | | | | |
| | | | | | | | | B581 | 10 | 4'-6" | PR | 1'-3" | 0'-9" | 2'-6" | -- | -- | -- | -- | -- | 0'-6" | 0'-3" | -- | Vertical ~ Set "A" |
| | | | | | | | | B582 | 10 | 5'-9" | SC | 0 | 2'-2" | 1'-4" | 2'-3" | -- | -- | 0 | -- | 2'-0" | -- | -- | Vertical ~ Set "A" |
| | | | | | | | | B883 | 17 | 6'-6" | SC | 0 | 2'-8" | 1'-2" | 2'-9" | -- | -- | 0 | -- | 2'-0" | -- | -- | Vertical ~ Sets "B" thru "J" |
| | | | | | | | | B584 | 1 | 15'-0" | EP | 2'-0" | 1'-2" | 2'-10" | 4'-7" | 1'-3" | 3'-2" | -- | 0'-10" | -- | -- | End of Wingwall | |
| | | | | | | | | B585 | 1 | 13'-6" | EP | 1'-4" | 1'-2" | 2'-2" | 4'-5" | 1'-3" | 3'-2" | -- | 0'-7 1/2" | -- | -- | End of Wingwall | |
| | | | | | | | | B586 | 1 | 12'-0" | EP | 0'-8" | 1'-2" | 1'-6" | 4'-3" | 1'-3" | 3'-2" | -- | 0'-5" | -- | -- | End of Wingwall | |
| | | | | | | | | | | | | | | | | | | | | | | | |
| | | | | | | | | B591 | 2 | 19'-2" | V | -- | -- | -- | 13'-10" | 5'-4" | -- | -- | 3'-0" | -- | -- | Tops of Wingwalls | |
| | | | | | | | | West Pier | | | | | | | | | | | | | | | |
| | | | | | | | | WP551 | 88 | 2'-8" | L | 1'-4" | 1'-4" | -- | -- | -- | -- | -- | -- | -- | -- | -- | Vertical |
| | | | | | | | | WP552 | 4 | 4'-6" | L | 2'-3" | 2'-3" | -- | -- | -- | -- | -- | -- | -- | -- | -- | Horizontal ~ Corners |
| | | | | | | | | East Pier | | | | | | | | | | | | | | | |
| | | | | | | | | EP551 | 88 | 3'-0" | L | 1'-8" | 1'-4" | -- | -- | -- | -- | -- | -- | -- | -- | -- | Vertical |
| | | | | | | | | EP552 | 4 | 4'-6" | L | 2'-3" | 2'-3" | -- | -- | -- | -- | -- | -- | -- | -- | -- | Horizontal ~ Corners |
| MARK | QTY. | LENGTH | LOCATION | MARK | QTY. | LENGTH | LOCATION | MARK | QTY. | LENGTH | TYPE | A | B | C | D | E | F | G | H | O | R | LOCATION | |

