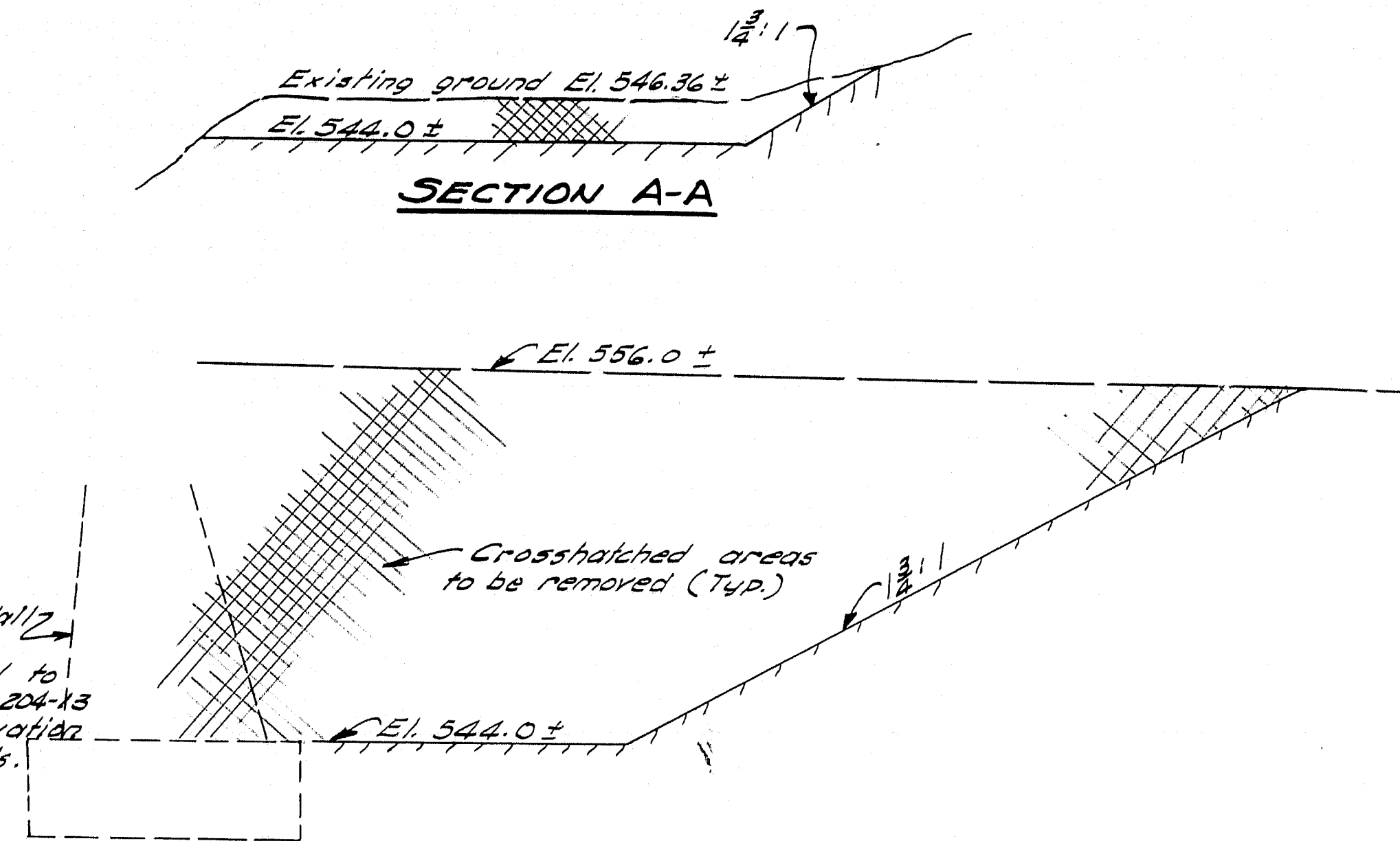
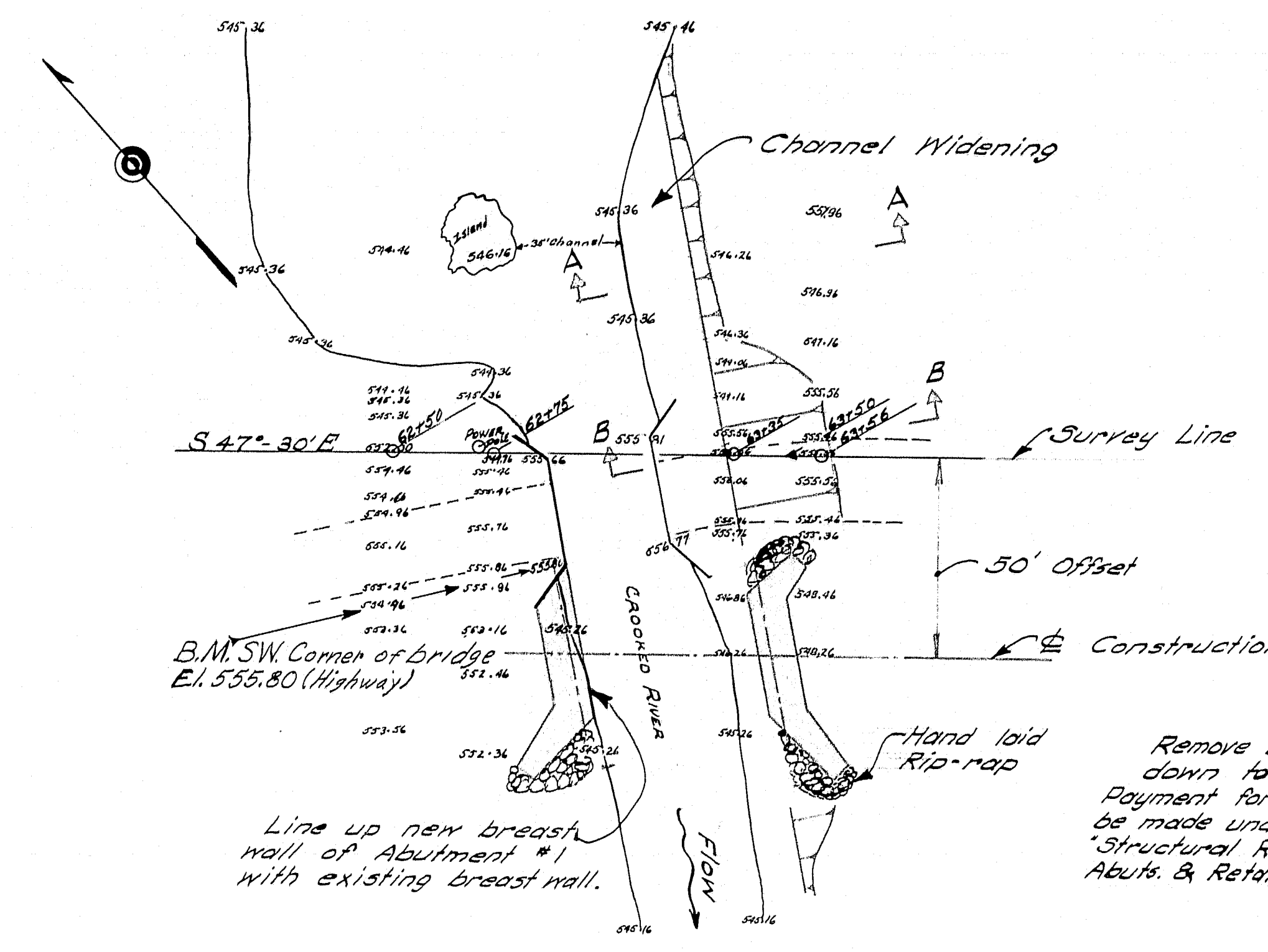
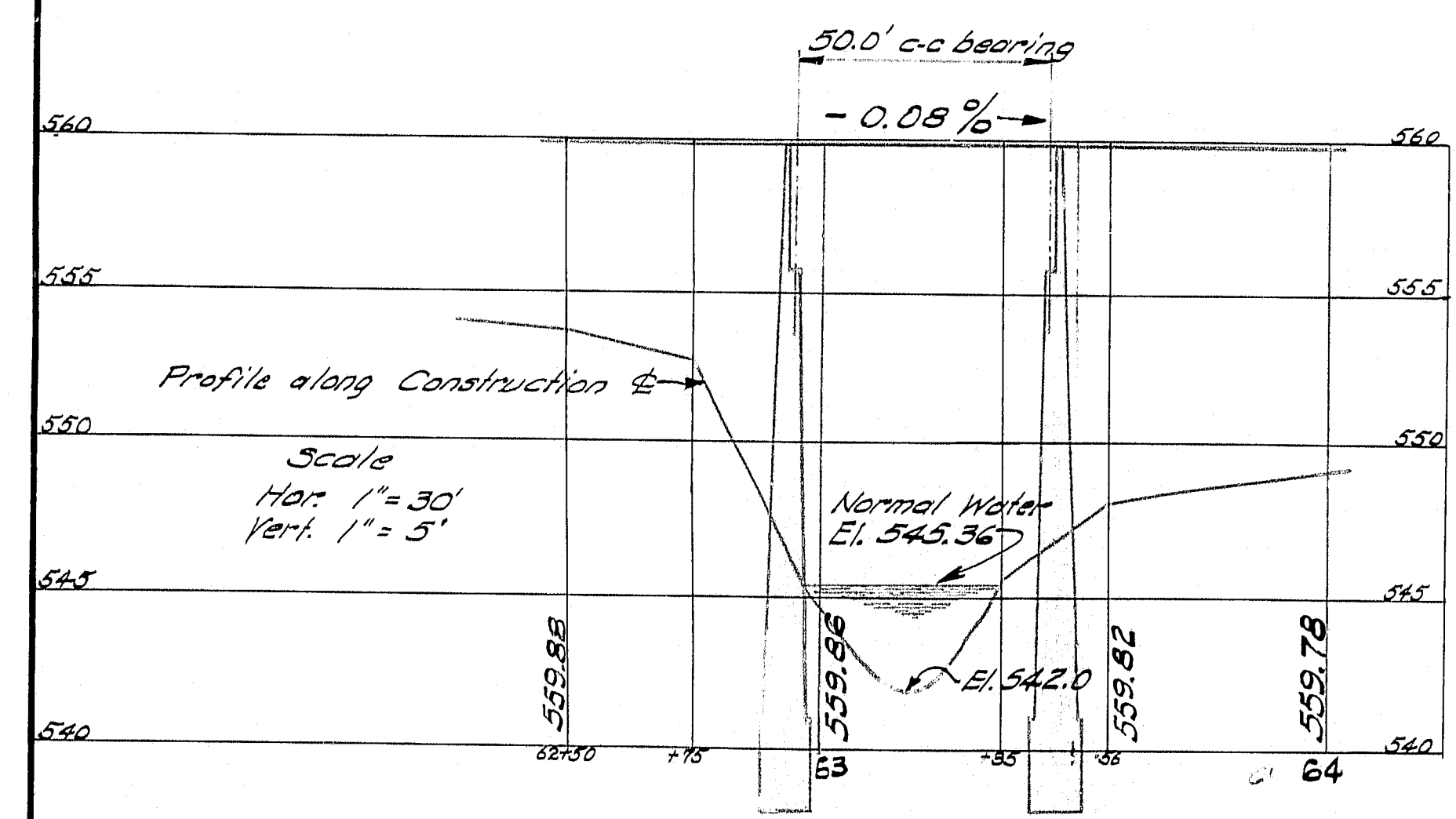


B. P. R. REG. NO.	STATE	PROJECT NUMBER	SHEET NO.	TOTAL SHEETS
1	MAINE	5-0131(2)	7	57



Remove Breast Wall down to footing. Payment for removal to be made under Item 204-K3 Structural Rock Excavation Abutts. & Retaining Walls.



Existing bridge - Mass concrete abutments repaired and in fair condition.
Reinforced concrete T-Beam - Good condition
Stream - Widen over road on both approaches quite often. Ice conditions in stream have been bad in the past as many mill ponds on stream. Now the mills are gone.

DESIGN - MERVILLE	BRIDGE NO. 5079
TRACE - MERVILLE	SURV. BLAKE
CHECK - MERVILLE	PLOT MERVILLE

STATE HIGHWAY COMMISSION
BRIDGE DIVISION

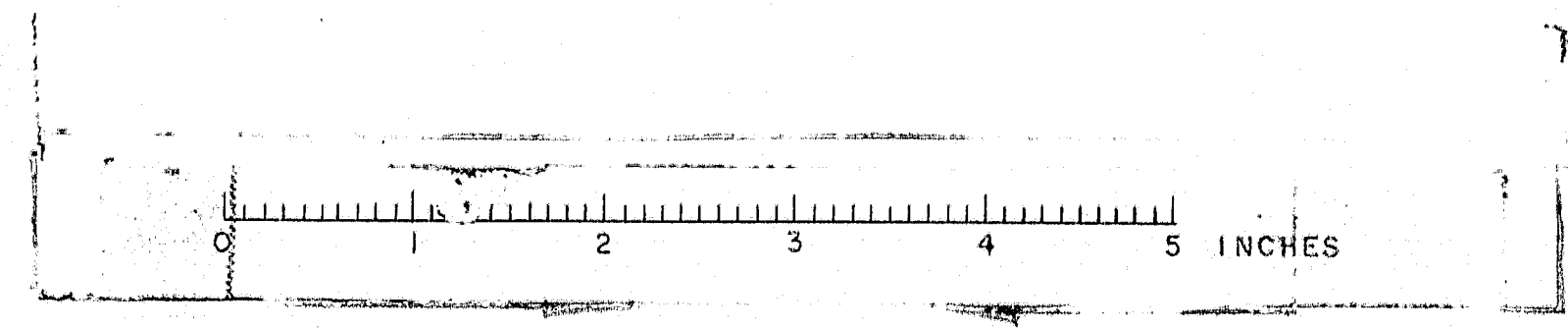
CROOKED RIVER BRIDGE

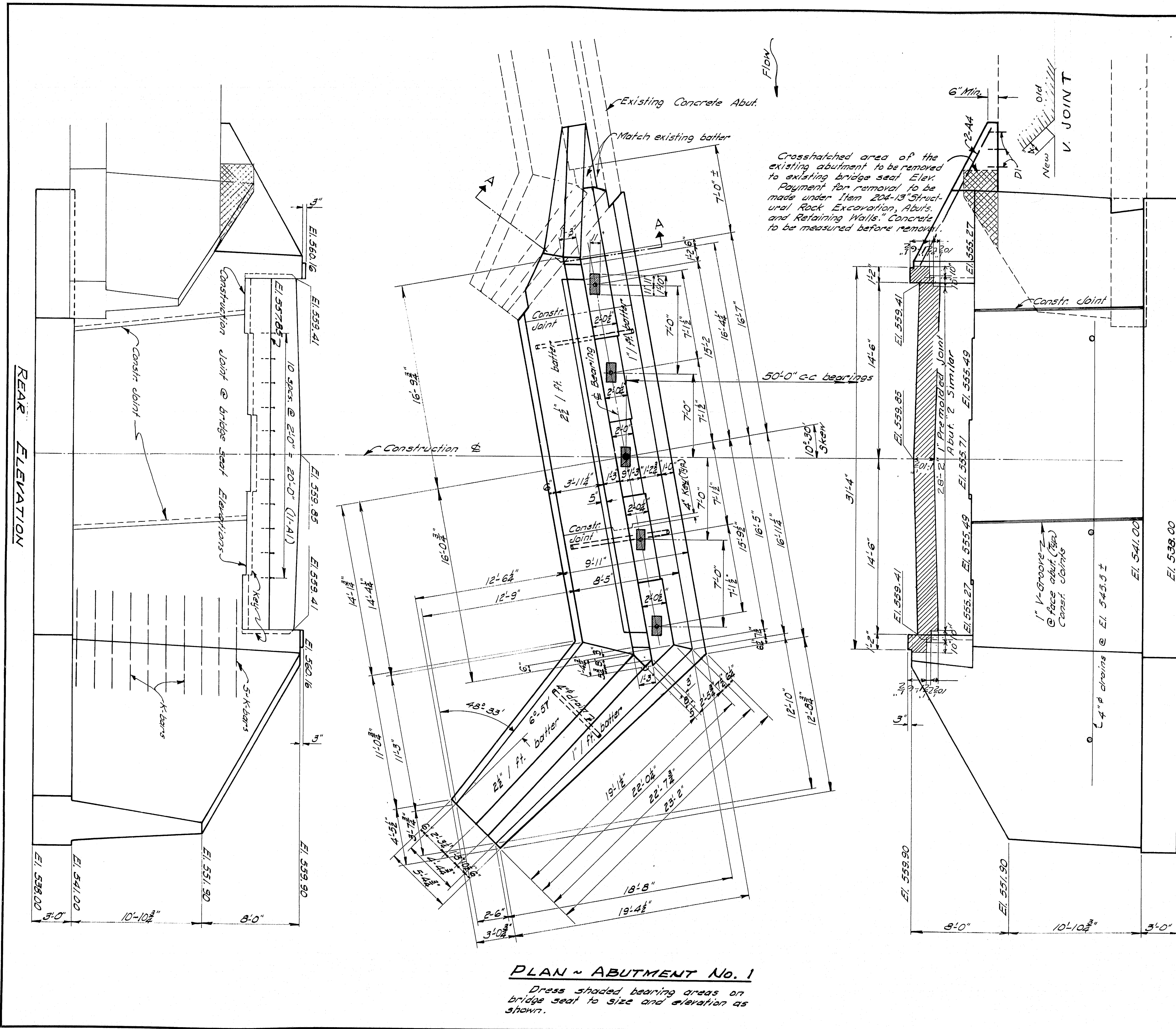
IN THE TOWN OF

ALBANY
OXFORD COUNTY
SURVEY

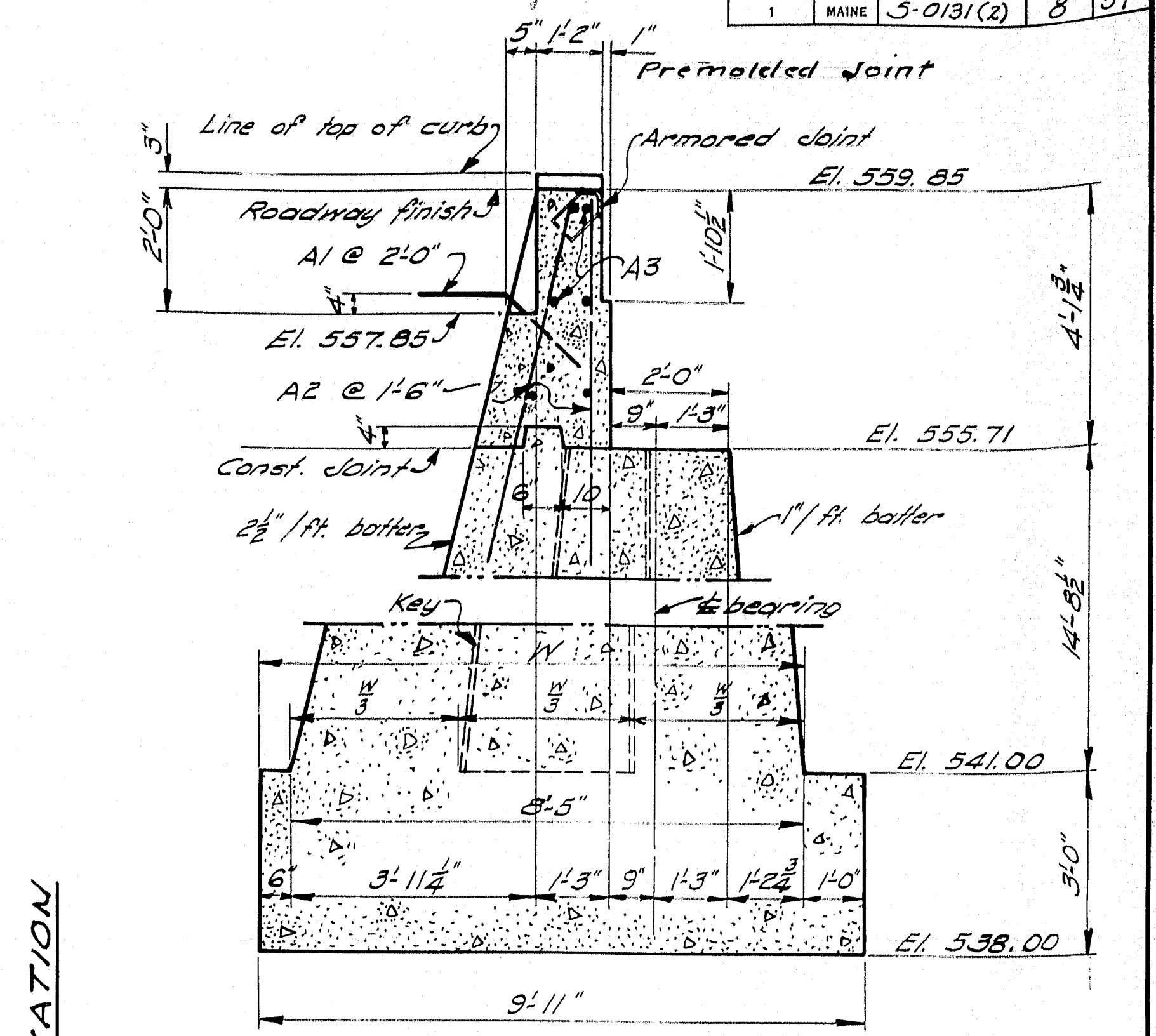
SHEET 1 OF 5 AUGUSTA, MAINE DECEMBER 1958

M-1412

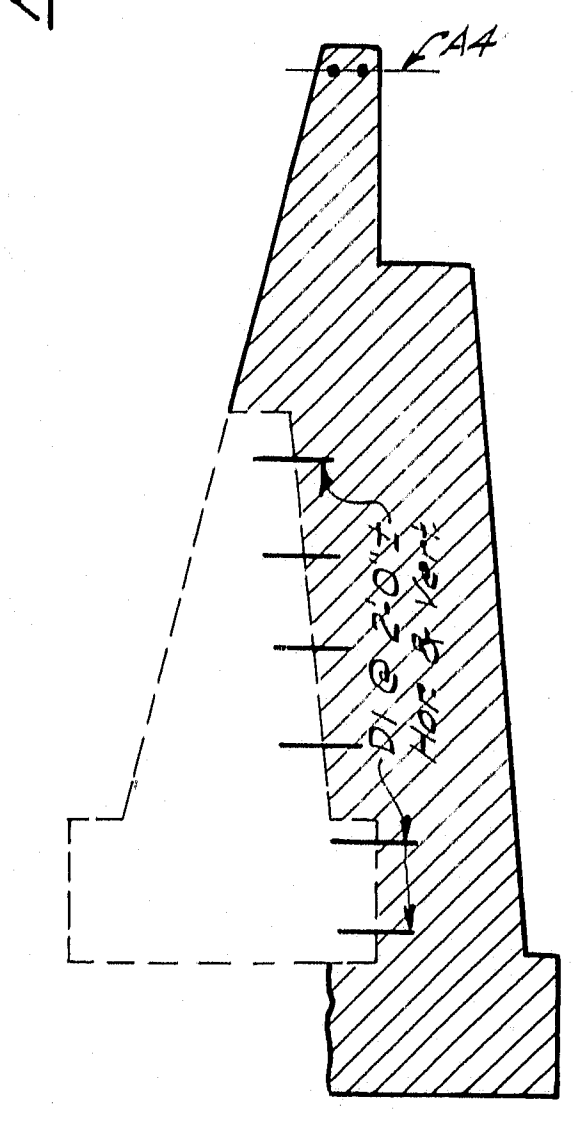




PLAN - ABUTMENT No. 1
 Dress shaded bearing areas on bridge seat to size and elevation as shown.



ABUTMENT SECTION @ C

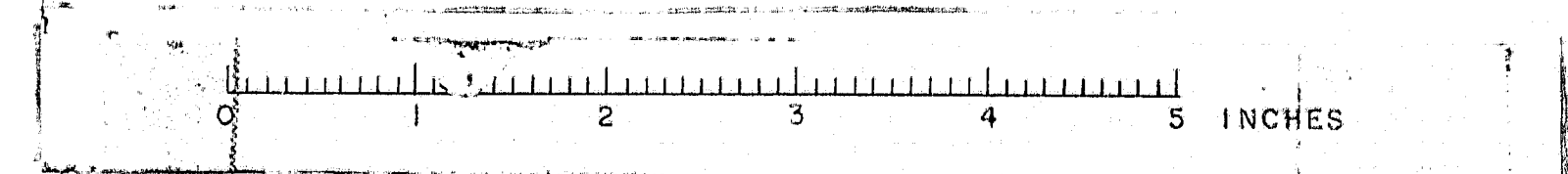


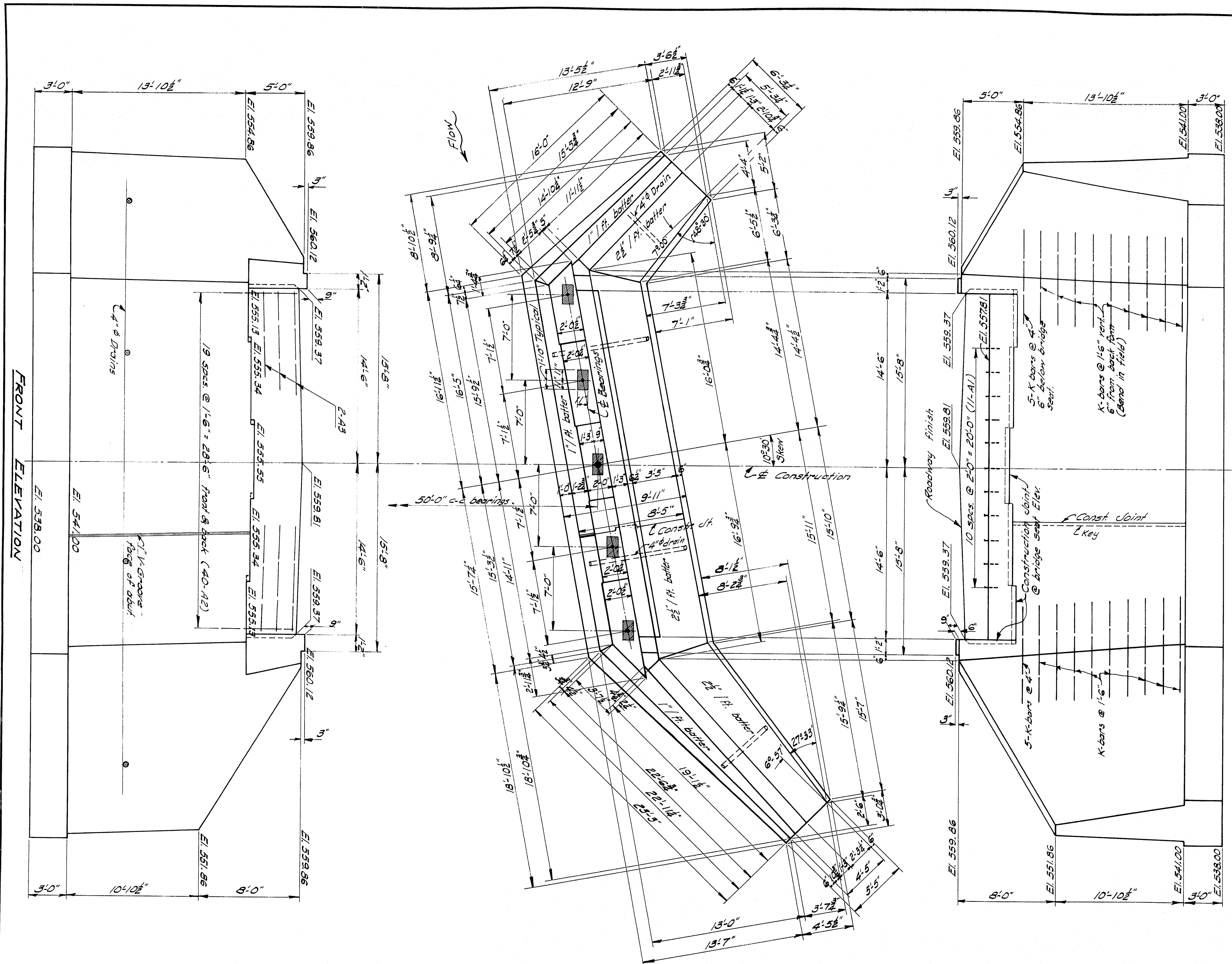
SECTION A-A
 Payment for drilling for and grouting of dowels D1 to be included in the price of Item * 705-14, Reinforcing Steel; Placing.

NOTE: See Abutment #2 for details of French Drain & Abut. Analysis. Cover the construction joint on the back side with 2 layers of heavy roofing 10" wide and recessed 1/2". Coat the concrete and each layer of roofing as applied with a suitable grade of roofing cement.

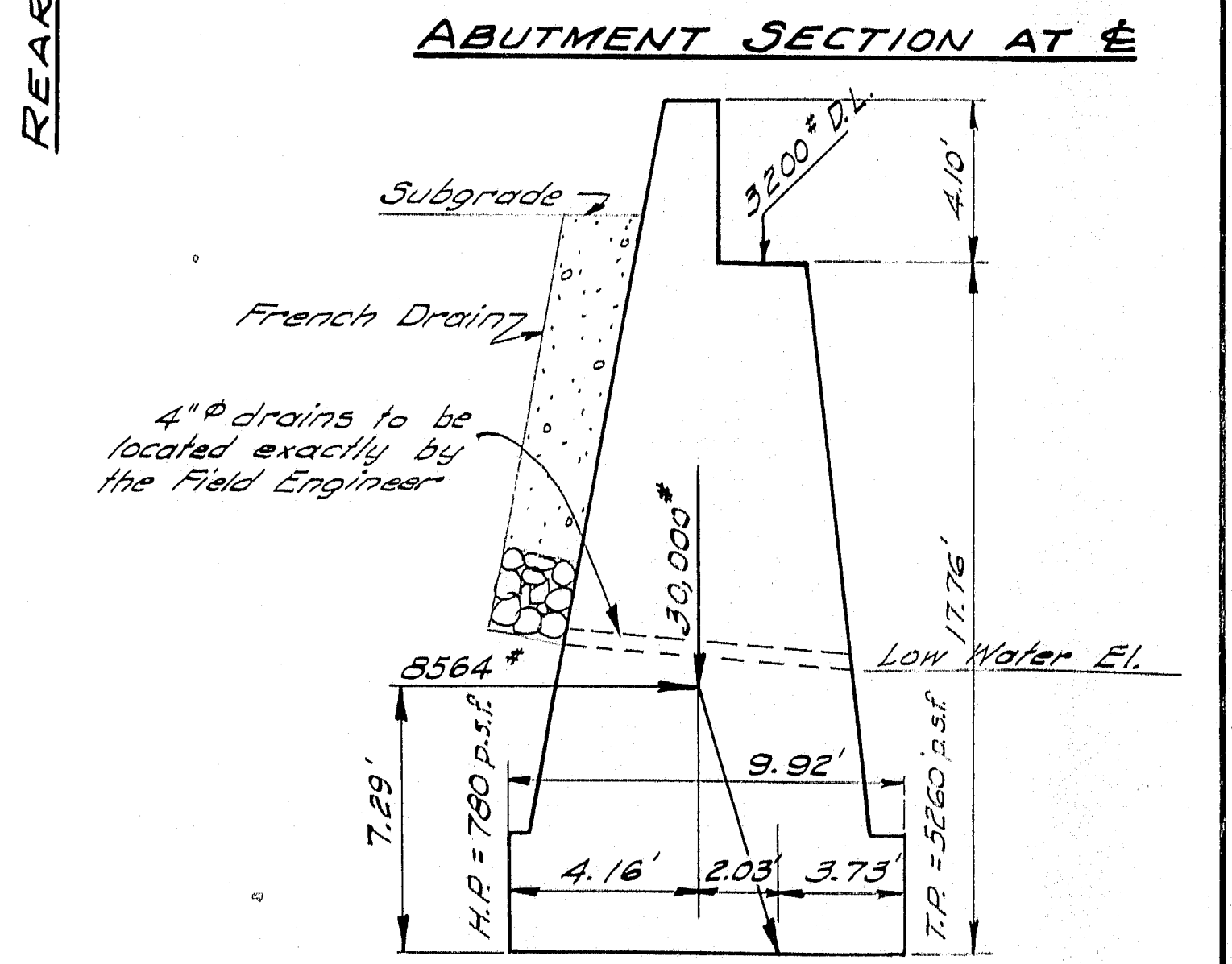
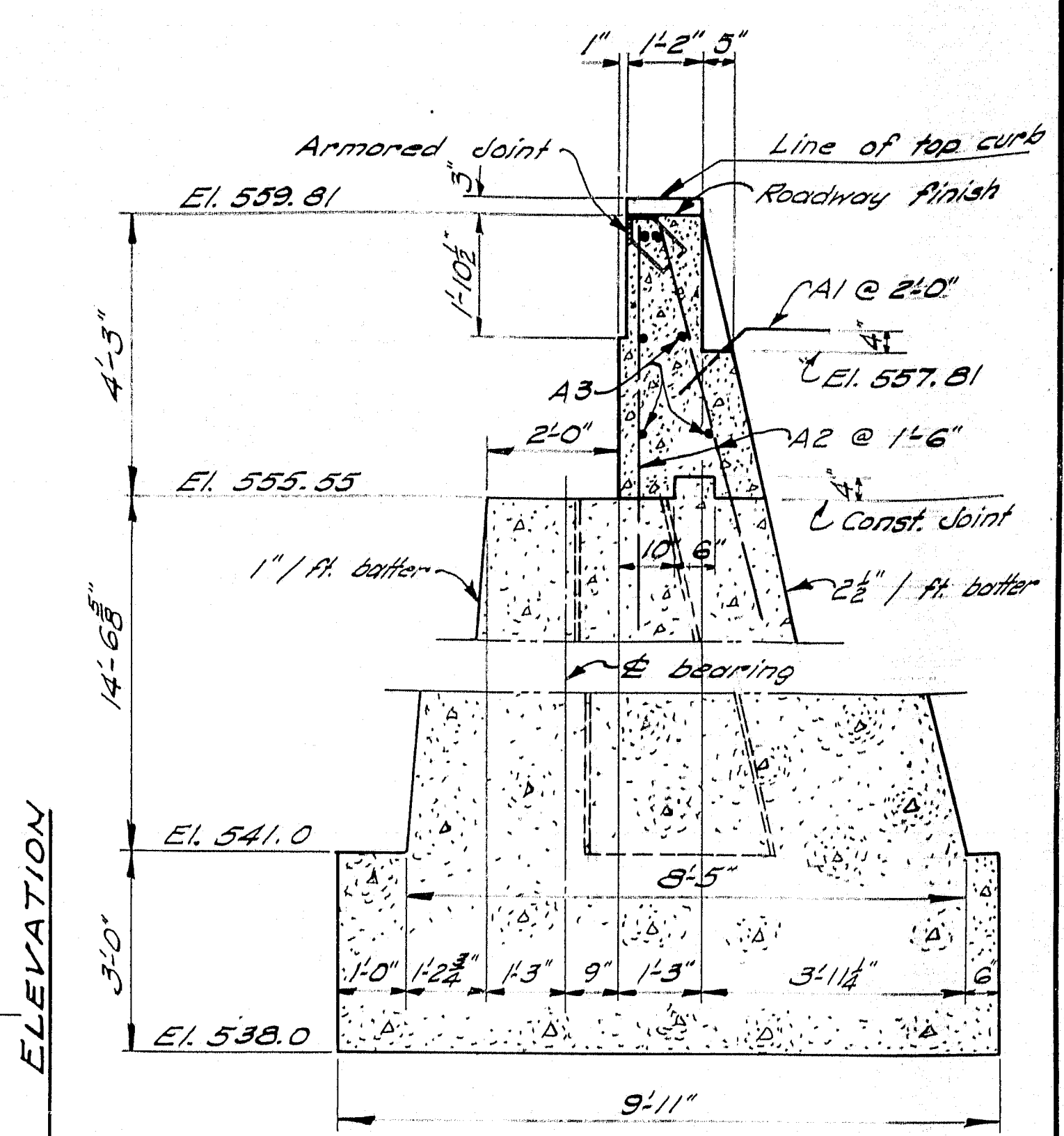
DESIGN - Blake	PROJECT NO. 5079
TRACE - G.W.C.	SURVEY -
CHECK - Blum	PLAT -
STATE HIGHWAY COMMISSION BRIDGE DIVISION	
CROOKED RIVER BRIDGE	
IN THE TOWN OF ALBANY OXFORD COUNTY	
ABUTMENT NO. 1	
SHEET 2 OF 5 AUGUSTA, MAINE JULY 1959	

M-1413





PLAN - ABUTMENT NO. 2
 Dress shaded bearing areas to size and elevation shown.



ABUTMENT ANALYSIS

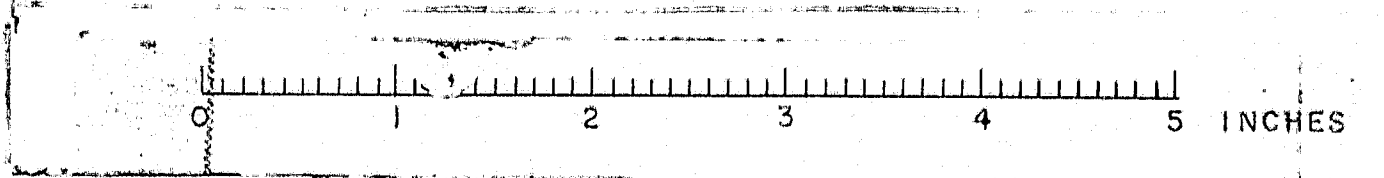
DESIGN - Blake	BRIDGE NO. 5079
TRACE - G.M.C.	SURVEY PLOT
CHECK - D.M.	

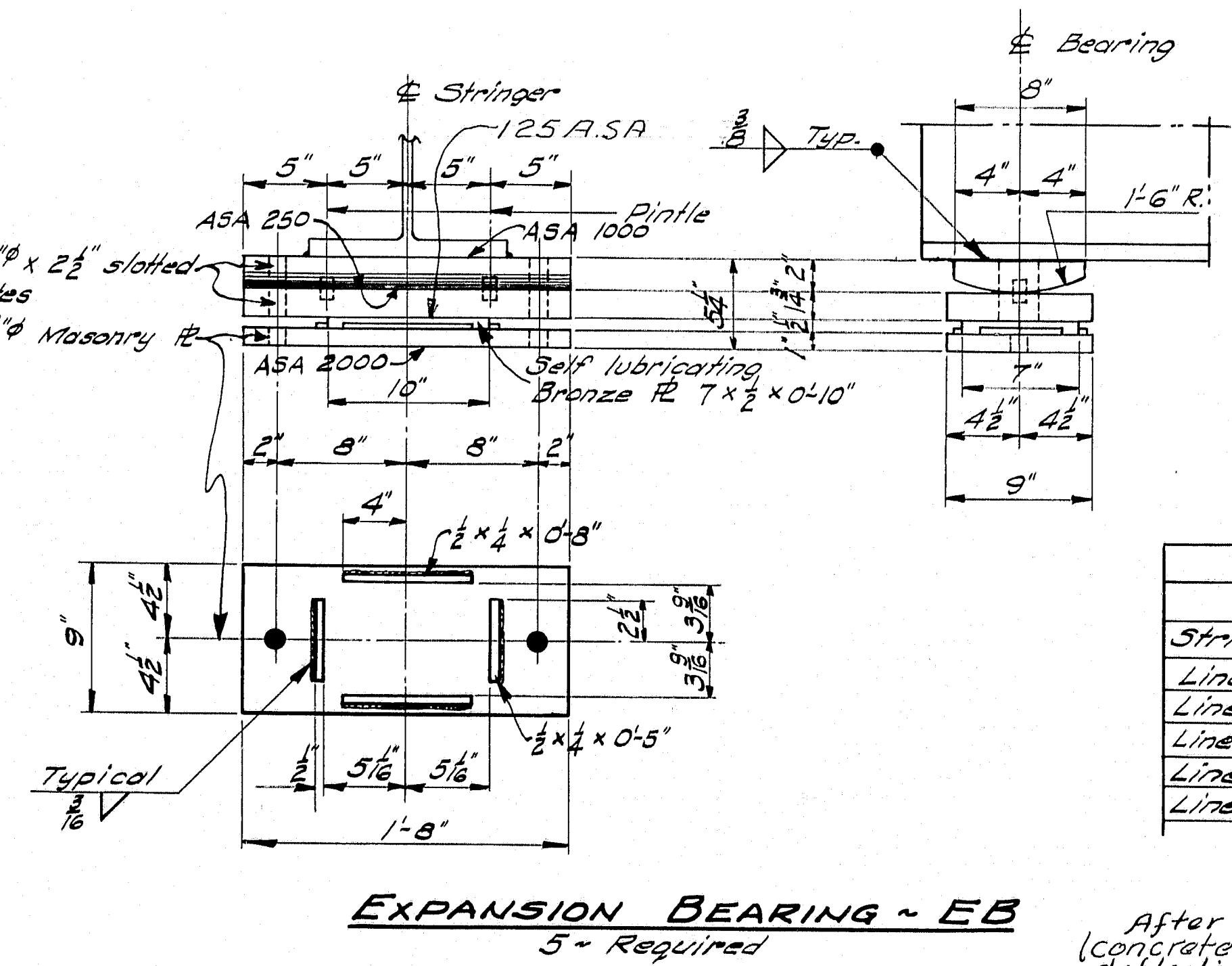
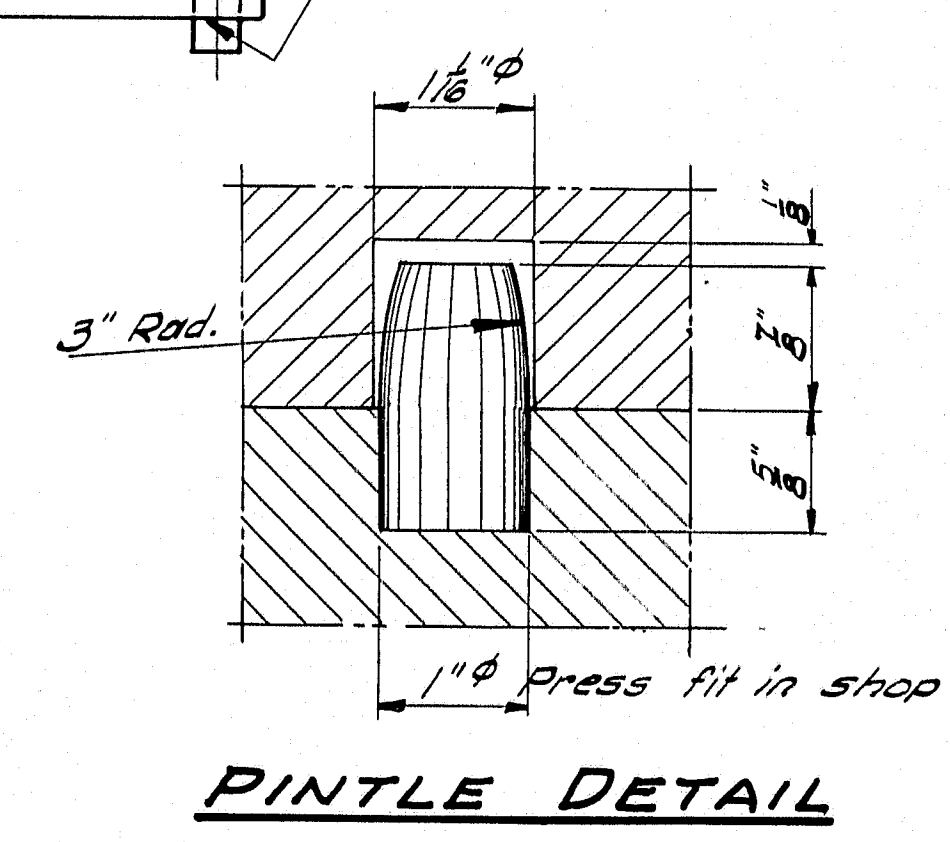
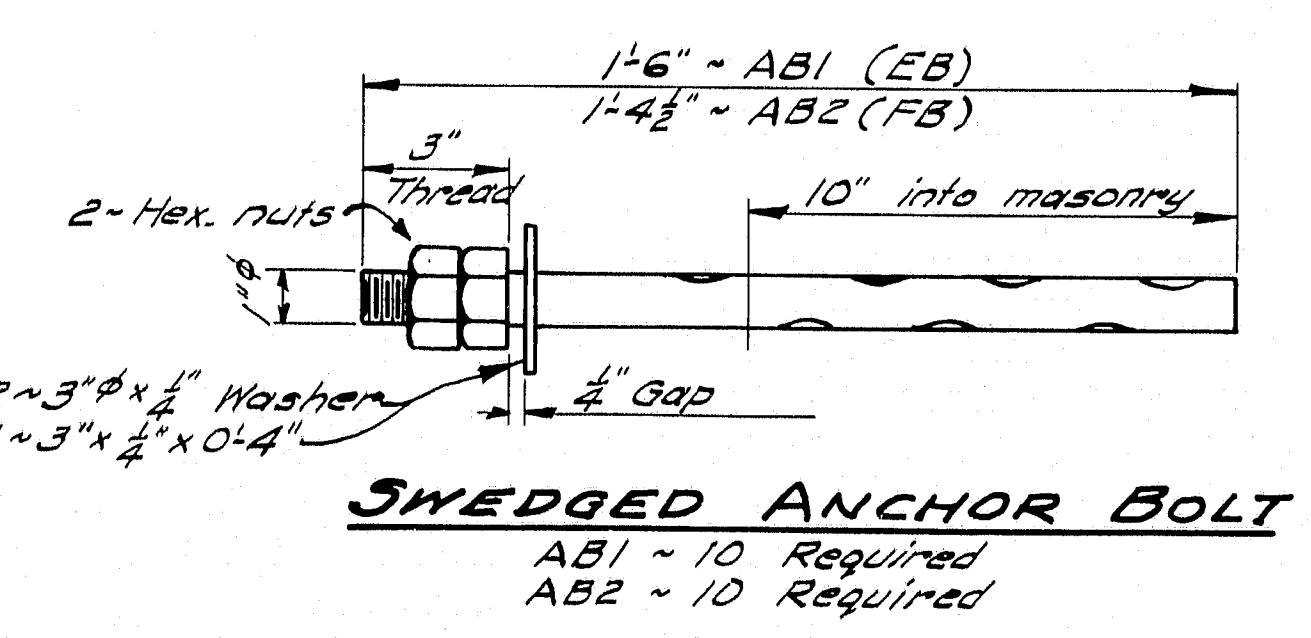
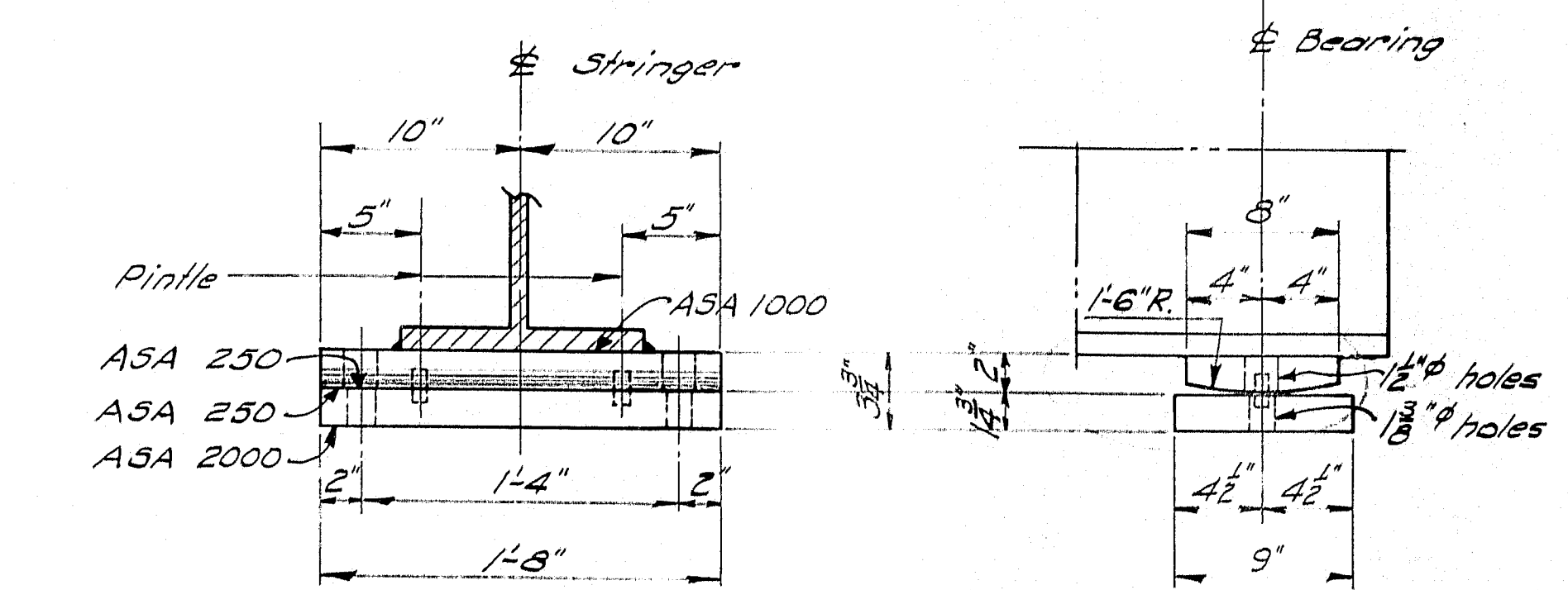
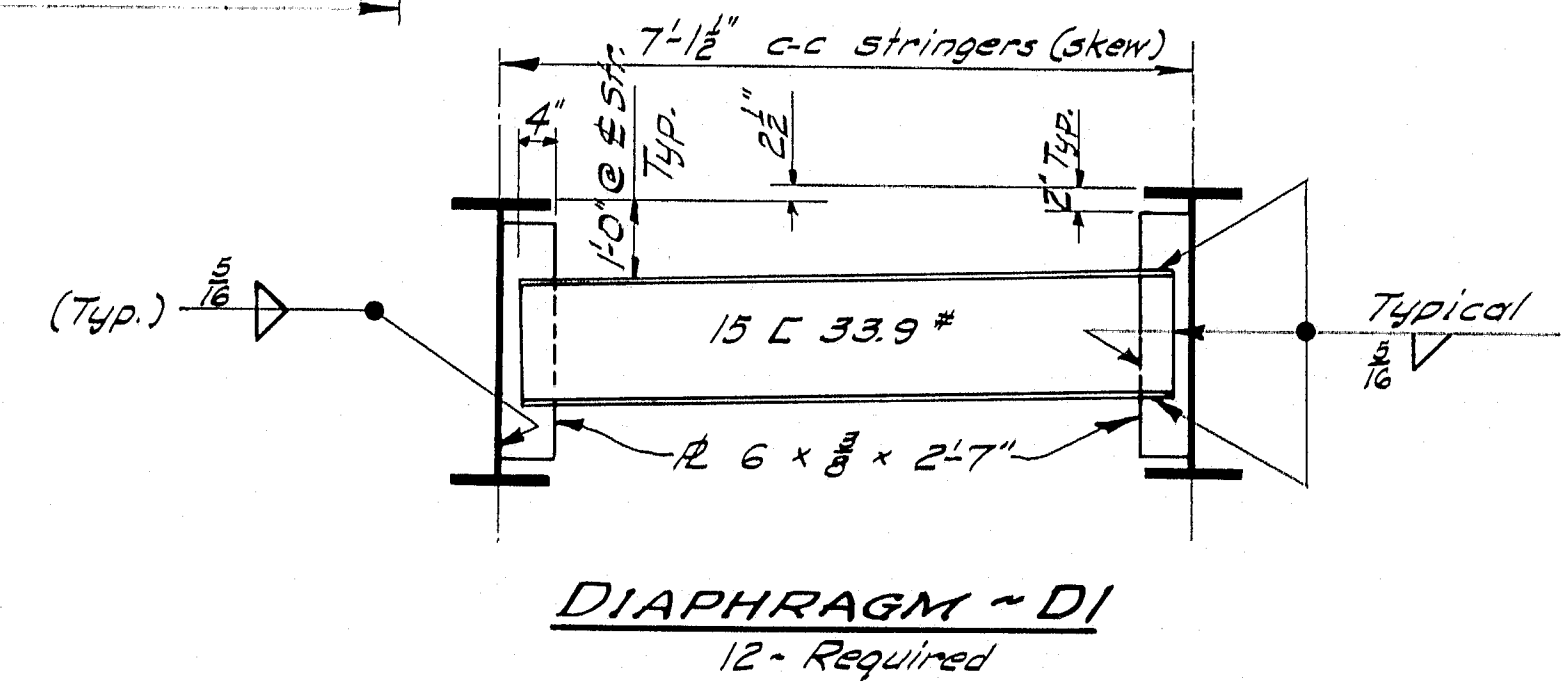
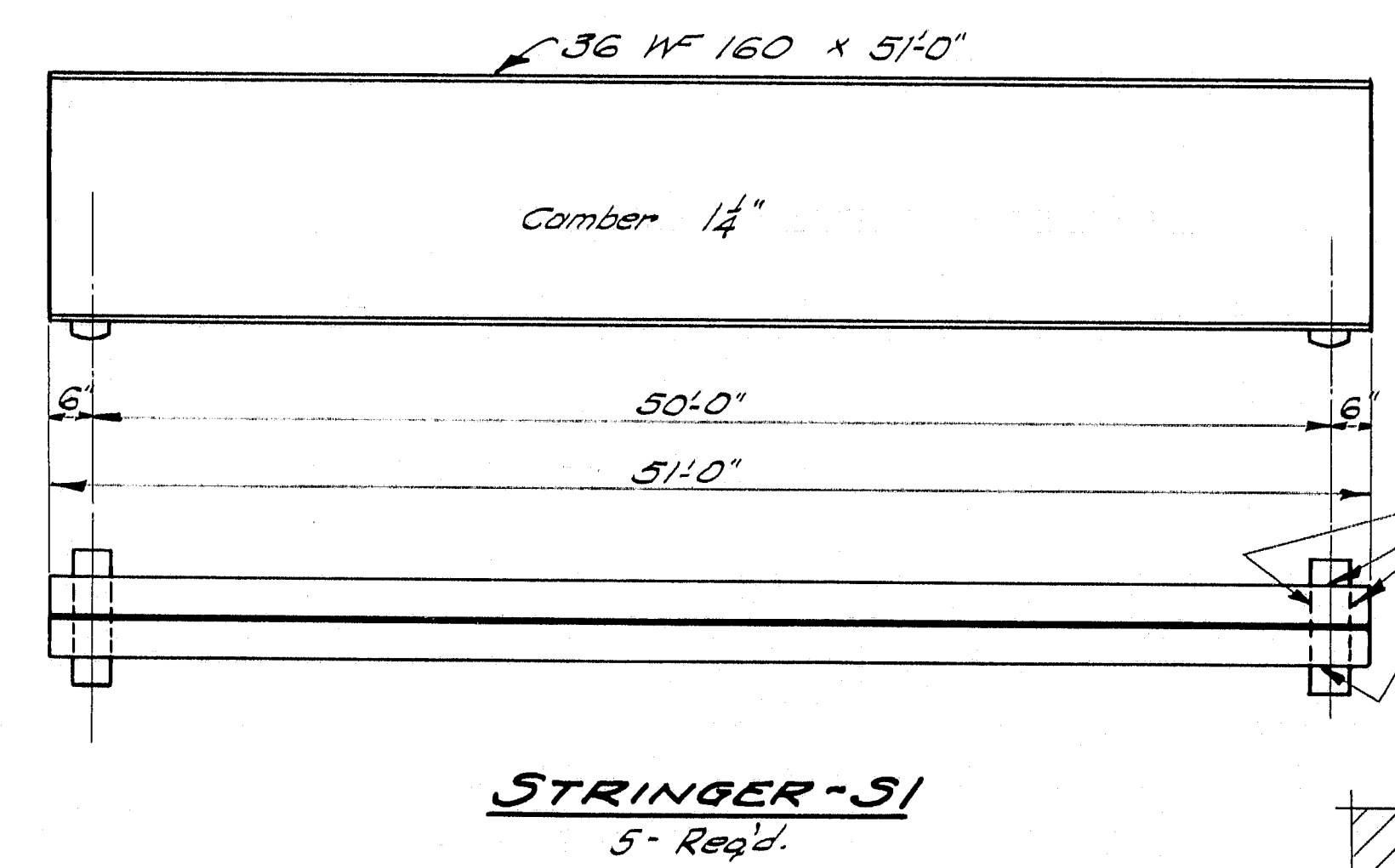
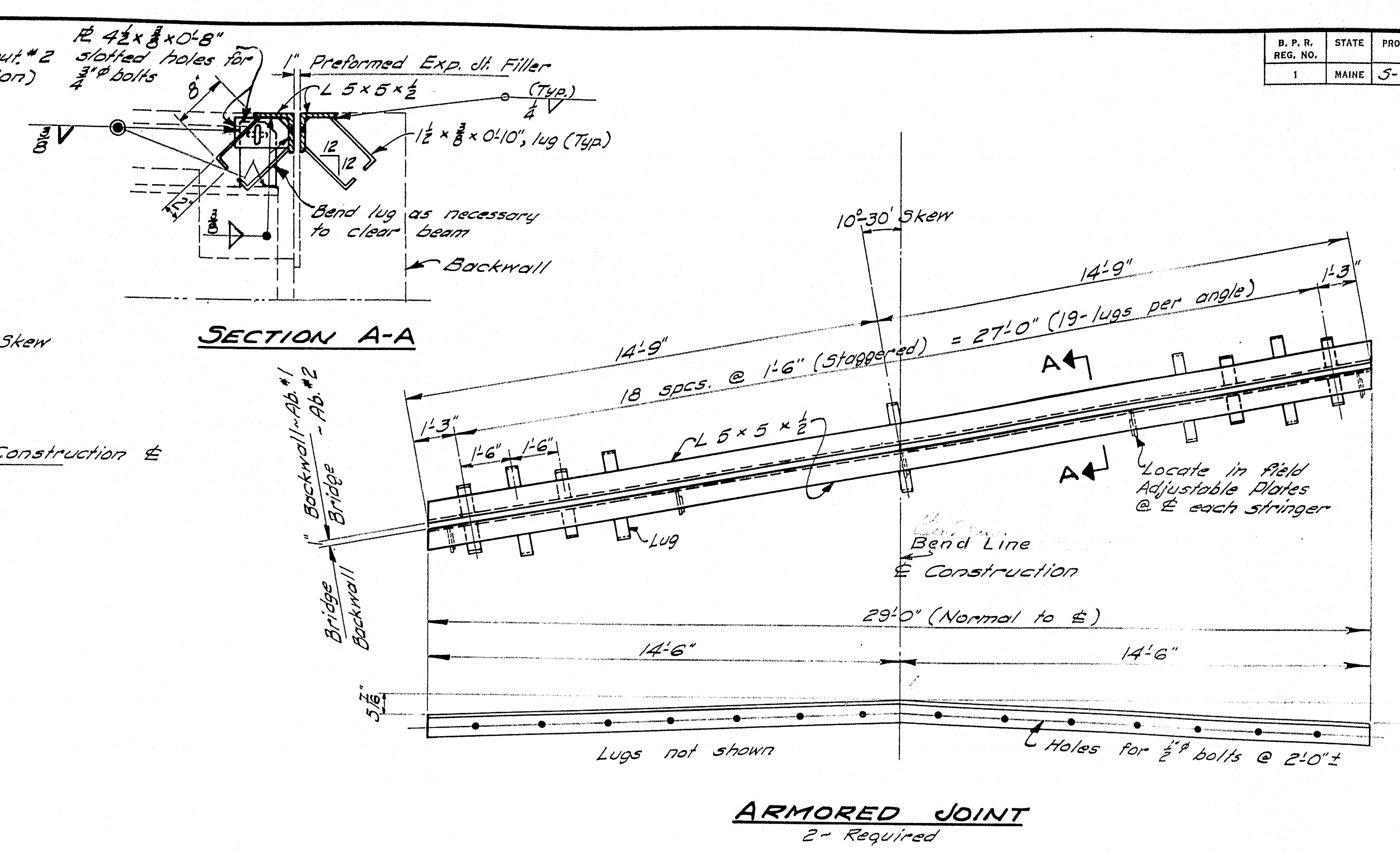
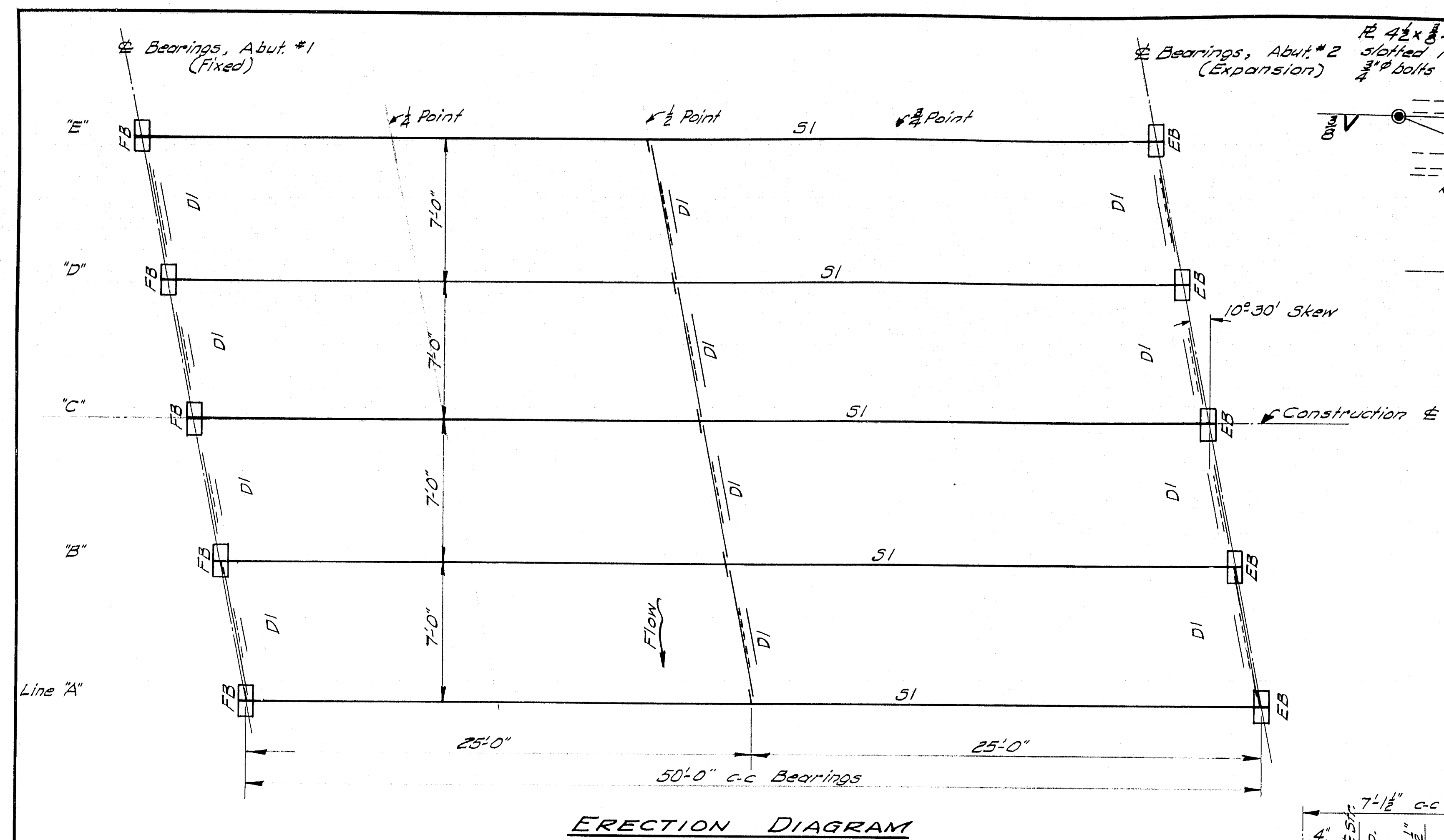
STATE HIGHWAY COMMISSION
 BRIDGE DIVISION

CROOKED RIVER BRIDGE
 IN THE TOWN OF
ALBANY
OXFORD COUNTY

ABUTMENT NO. 2
 SHEET 3 OF 5 AUGUSTA, MAINE JULY 1959

M-14-14





BOTTOM OF SLAB ELEV.

Stringer	Abut. #1	Point	Abut. #2
Line "E"	558.74	558.76	558.74
Line "D"	558.96	558.98	558.96
Line "C"	559.18	559.20	559.18
Line "B"	558.96	558.98	558.96
Line "A"	558.74	558.76	558.74

BLOCKING

After concrete is placed the dead load (concrete and surfacing) should produce proper deflections to give final finish grades

NOTE

After beams are in position, the elevations shown for bottom of slab should be set at points indicated. The difference between this elevation and the top of beam is the blocking at that point.

STATE HIGHWAY COMMISSION
BRIDGE DIVISION

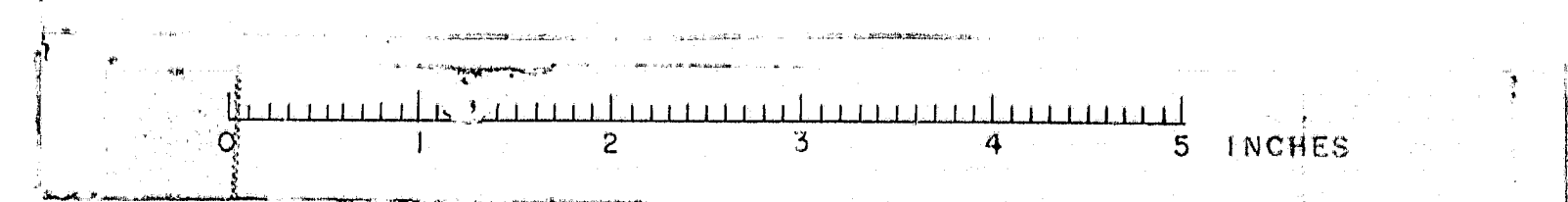
CROOKED RIVER BRIDGE

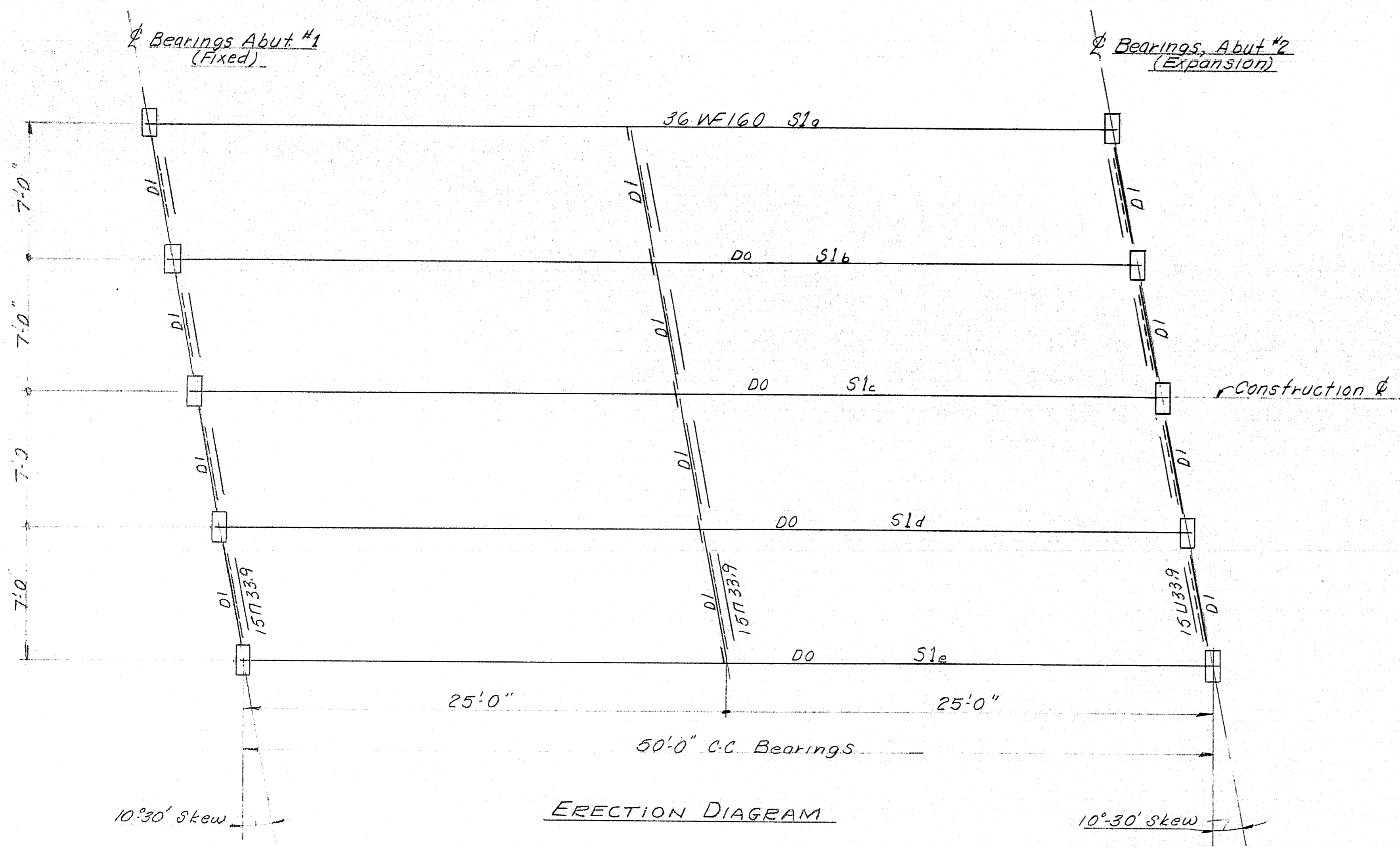
IN THE TOWN OF
ALBANY
OXFORD COUNTY

STRUCTURAL STEEL

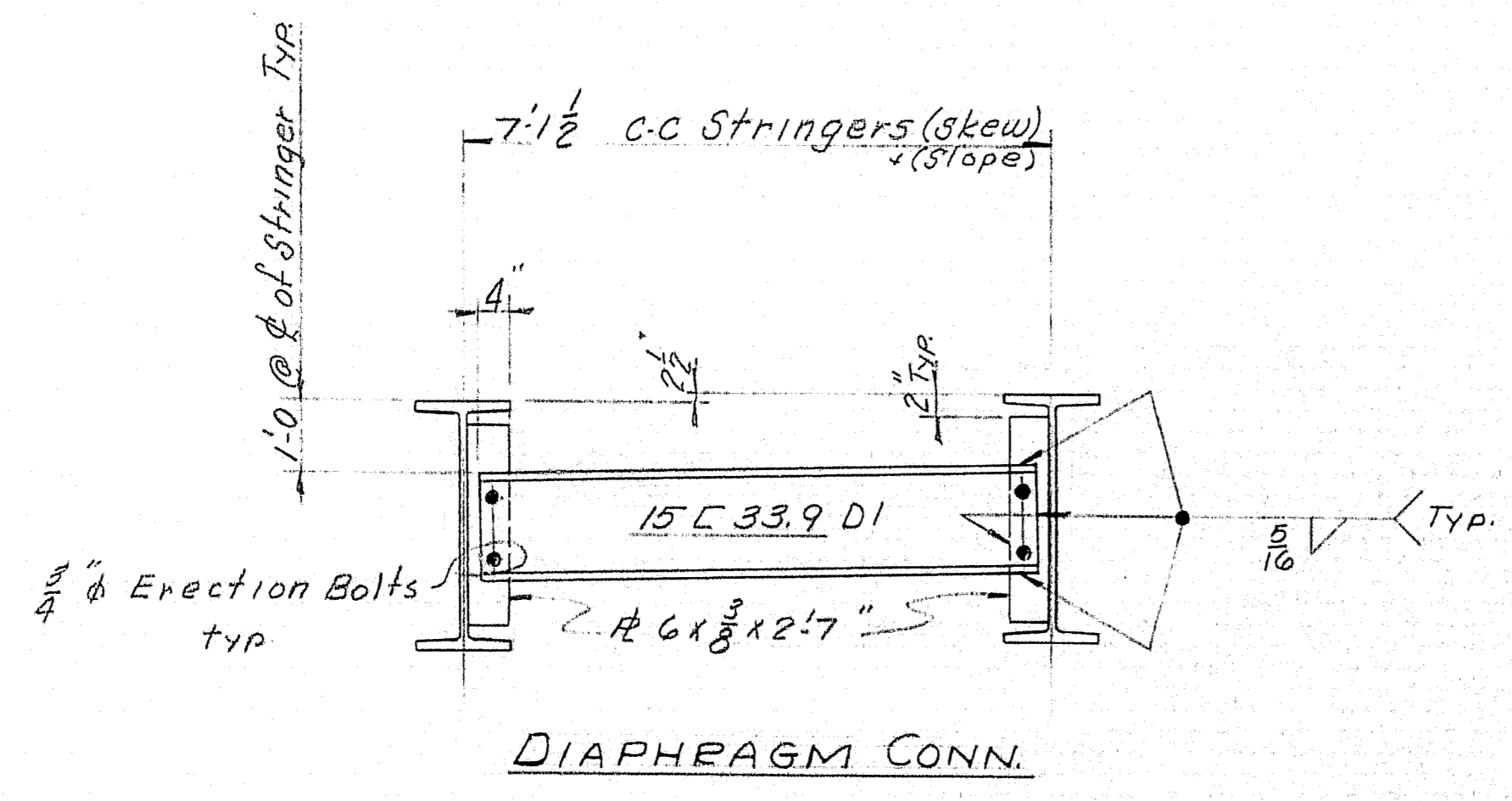
SHEET 4 OF 5 AUGUSTA, MAINE JULY 1959

M-1415



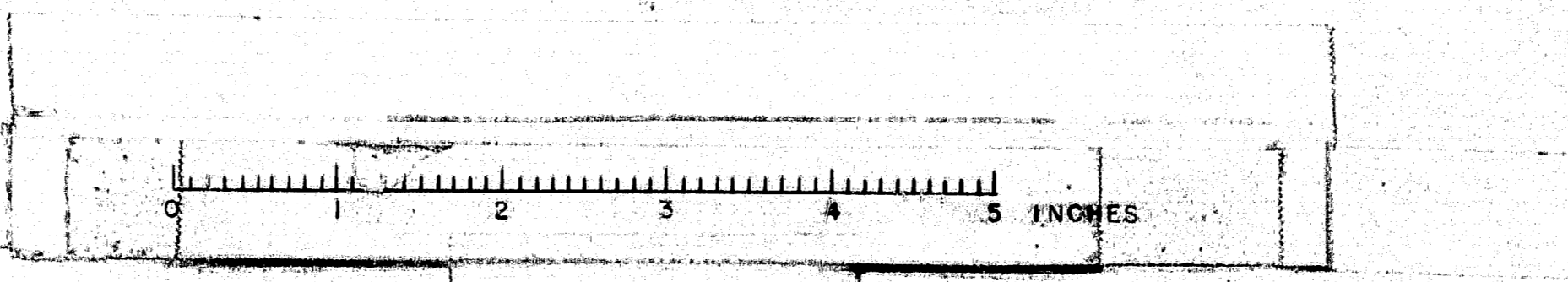


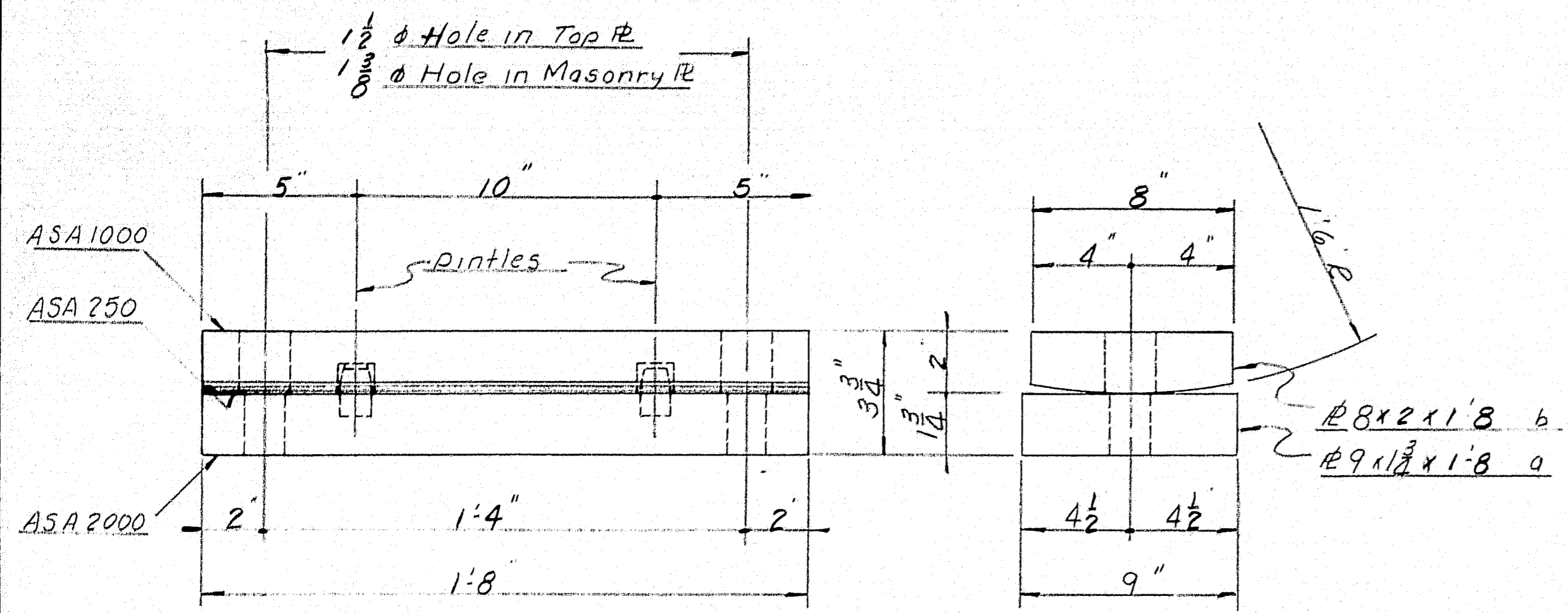
ERECTION DIAGRAM



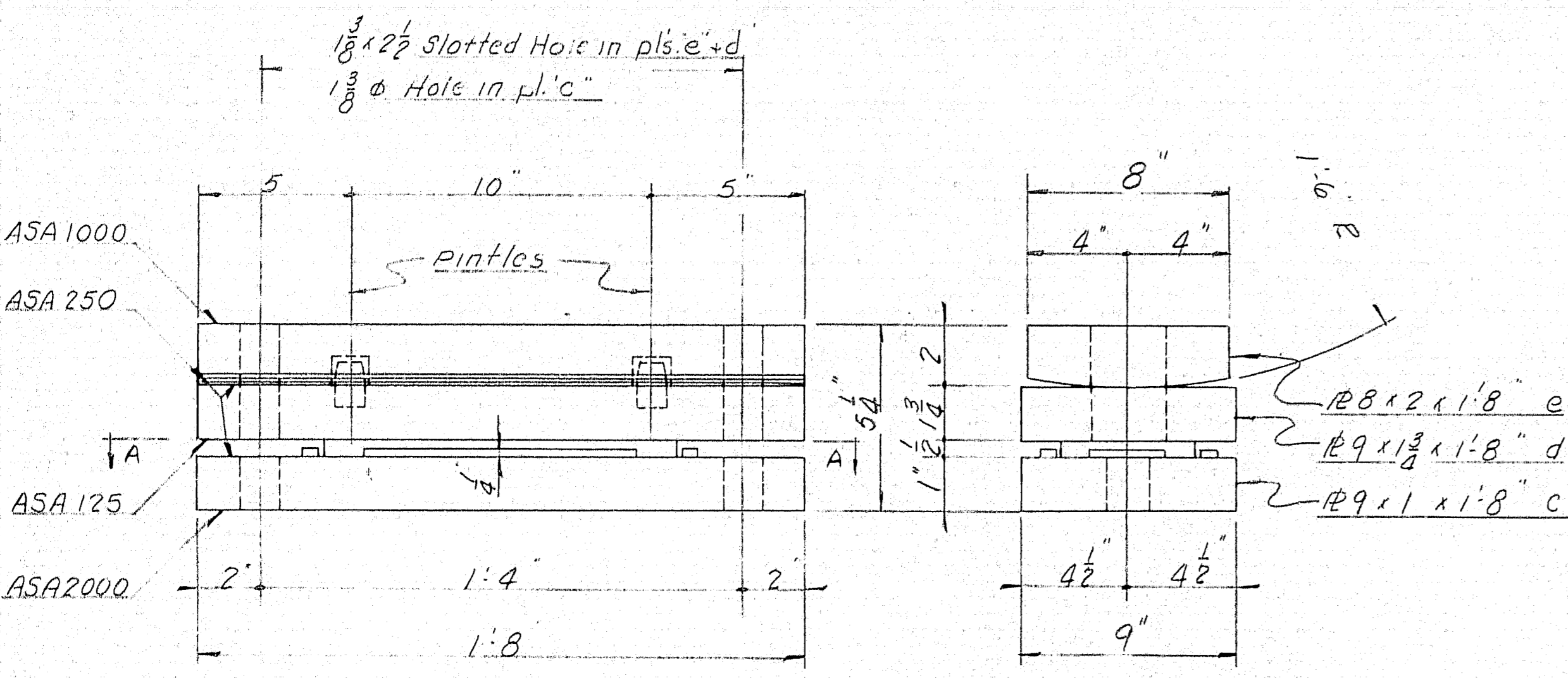
NOTES:

DRAWN 9-20-60 RGM		ERECTION DIAGRAM	
REVISION		Bancroft & Marion Rolling Mills Company	
REVISION		South Portland, Maine	
REVISION		CROOKED RIVER BRIDGE	
REVISION		ALBANY, MAINE	
ORDER NO. VERBAL		CUSTOMER H.E. SARGENT, INC.	
DWG. NO. 60-459-E1		DESIGNER MAINE S.H.C., BRIDGE DIV.	



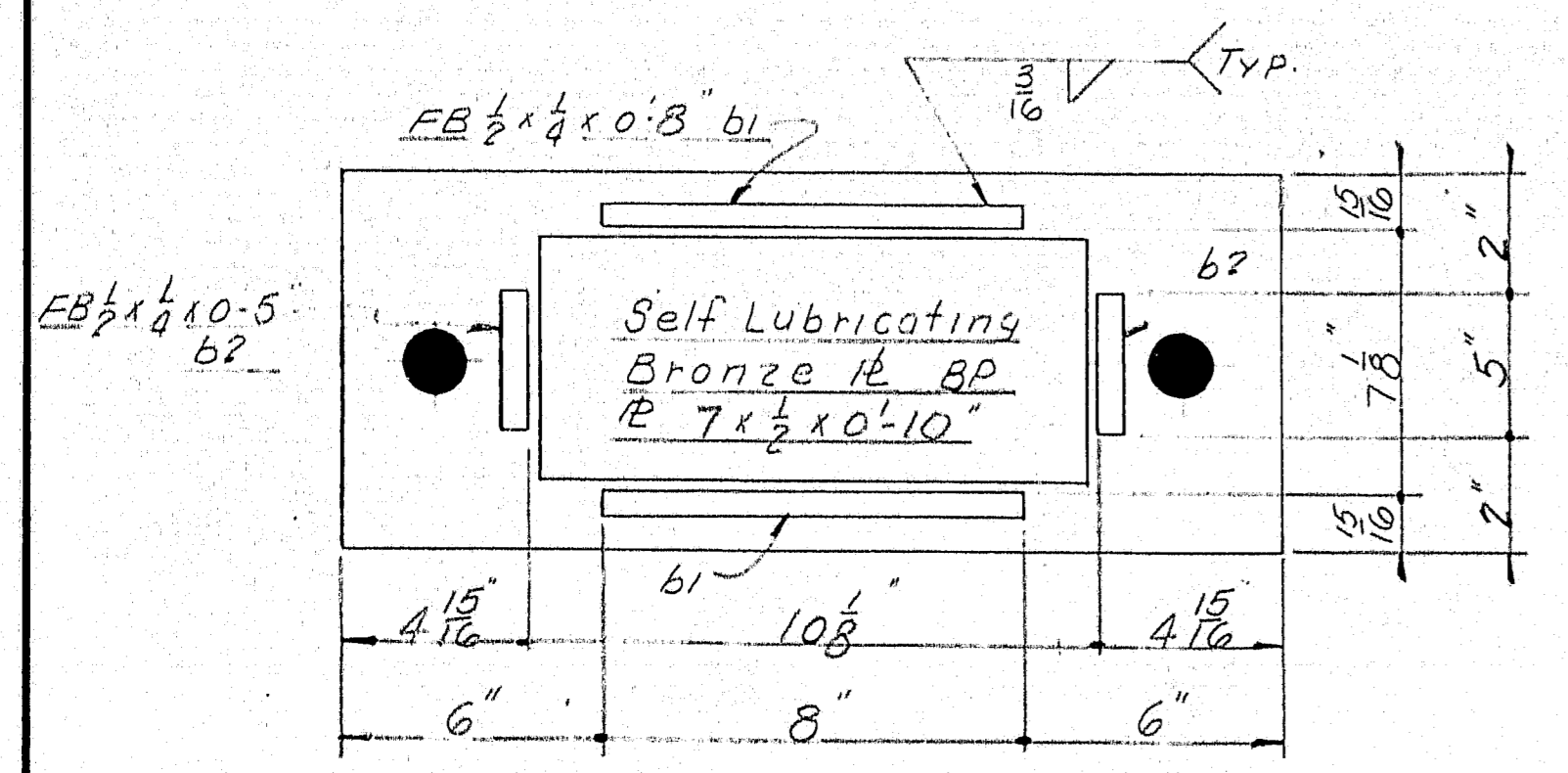


FIXED BEARING FBI
5 REQ'D

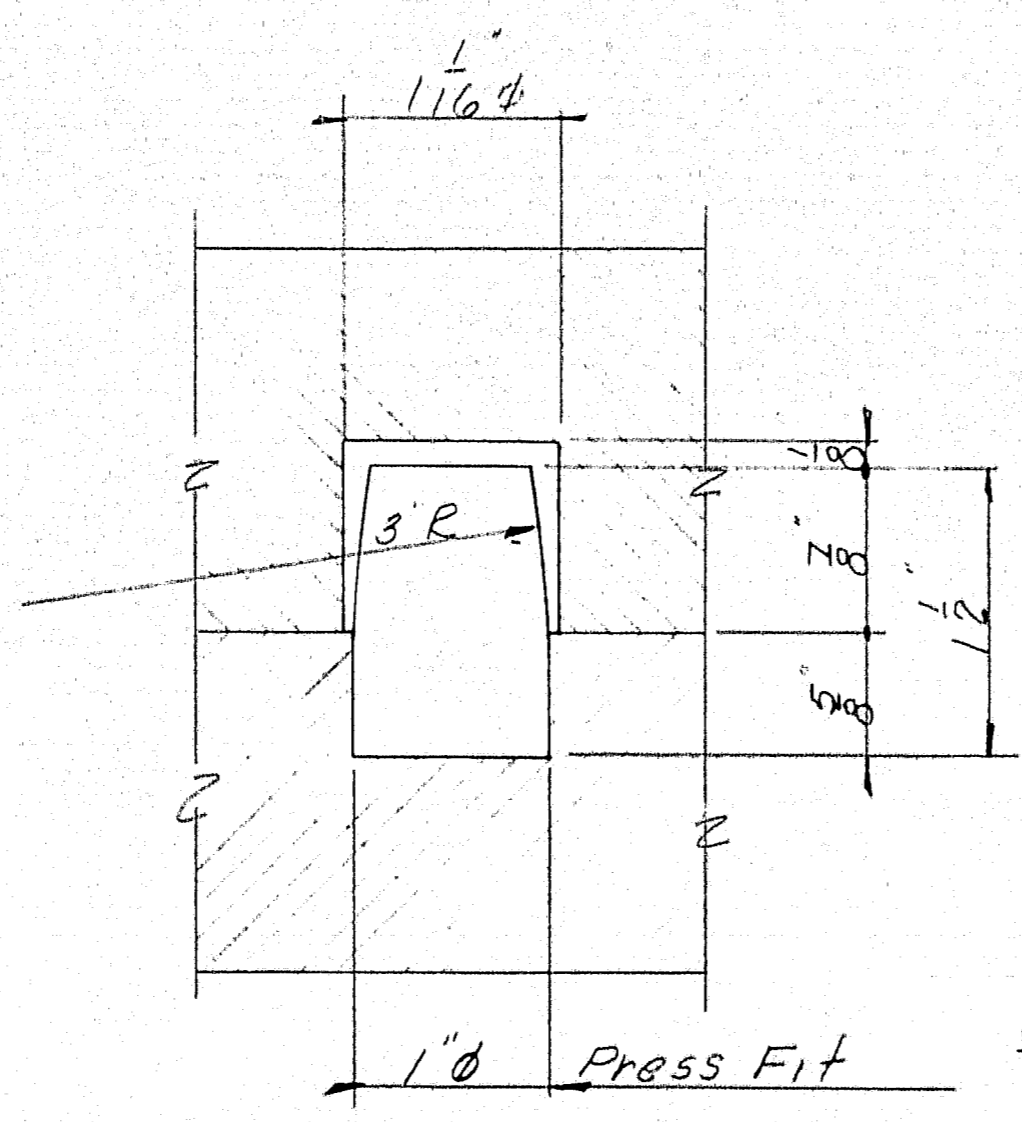


EXPANSION BEARING EBI
5 REQ'D

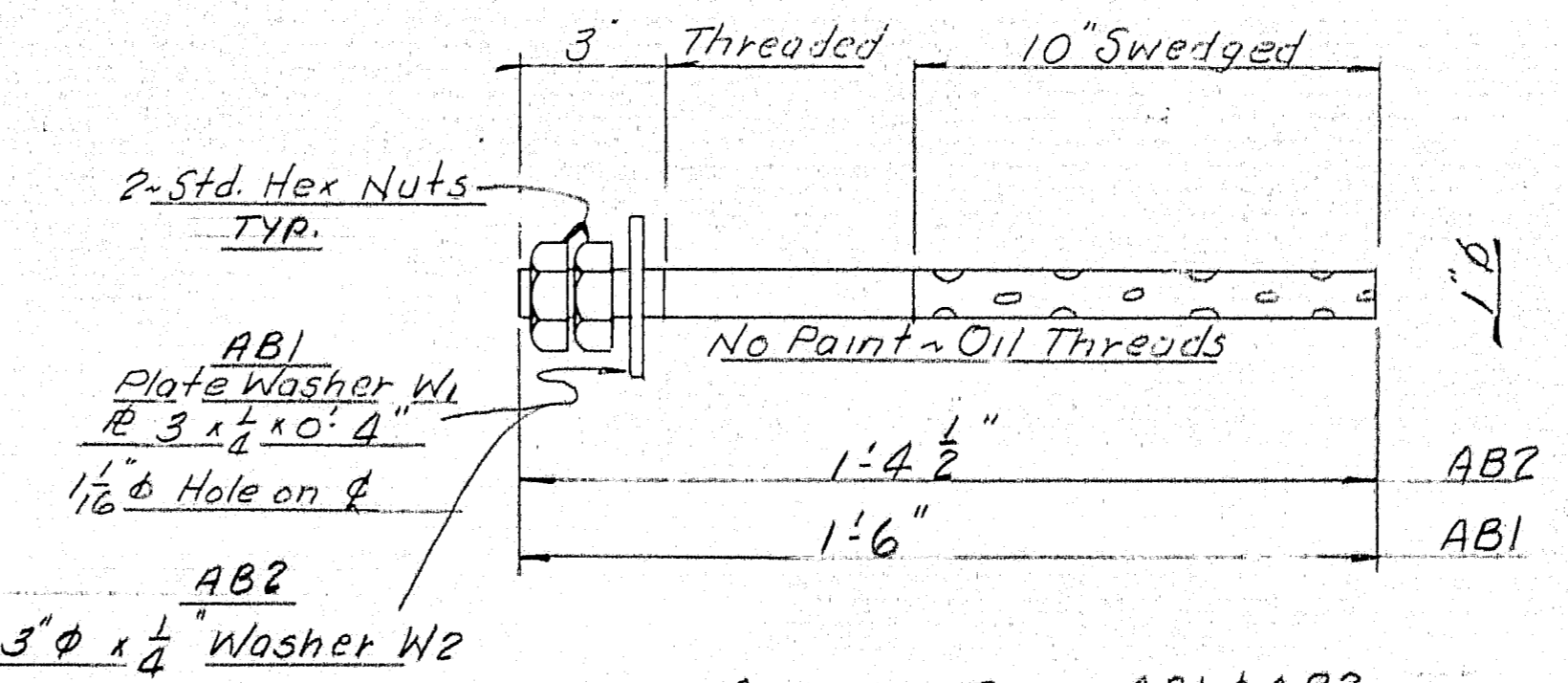
NOTE:
No paint top & bottom of all bearings
Coat all finished surfaces with white lead & tallow



SECTION A-A



PINTLE DETAIL



ANCHOR BOLT AB1 & AB2
AB1 10 REQ'D @ EXA. BRG.
AB2 10 REQ'D @ FIX. BRG.

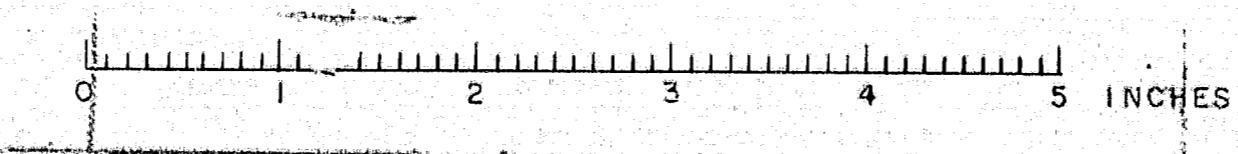
SHIP		BILL OF MATERIAL					DWG. NO. 60-459-S1
MARK	NO.	MARK	SHAPE	LENGTH	WT.	WT. REQ'D	REMARKS
FBI	5		Shop Asby				
EBI	5		Shop Asby				
	5	a	#9 x 1 3/4	1 8	7"		+ 1.75%
	5	b	#8 x 2	1 8	32"		no
	5	c	#9 x 1	1 8	4"		no
	5	d	#9 x 1 3/4	1 8	15"		no
	5	e	#8 x 2	1 8	43"		no
	10	b1	FB 1/2 x 1/4	0 8			
	10	b2	no	0 5			
	20	Pintles	1" Bar	0 1 1/2			
AB1	10		1" Bar	1 6			
AB2	10		1" Bar	1 4 1/2			
	10	Shop	1 1/2 Hex Nut				
	10	W2	3" x 1/4"				Washer
	10	W1	#3 x 1/4"	0 4			1 1/8" hole on fl
BP	5		#7 x 1/2"	0 10			(standard 1918-60) Lubricating Bronze Pl ITEM 703-9
			Shop Plate	11 0			60" / 11

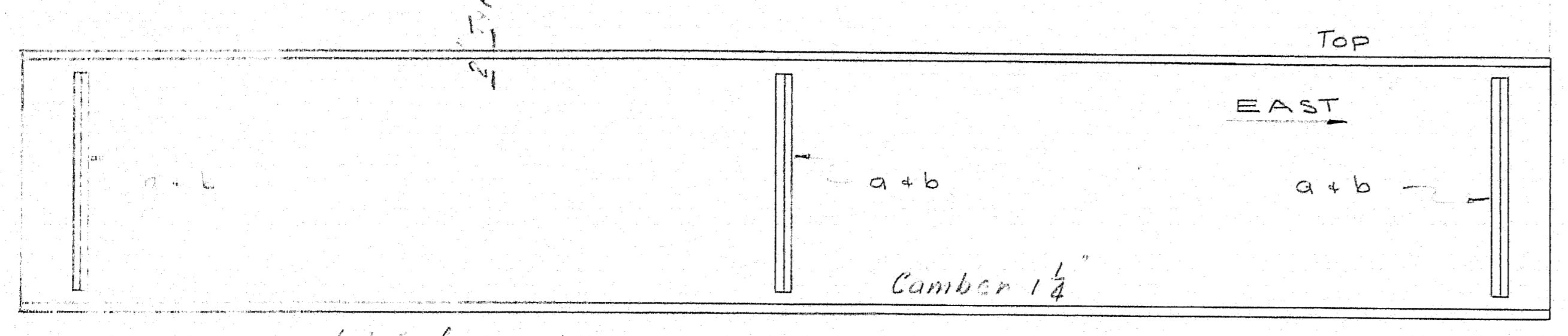
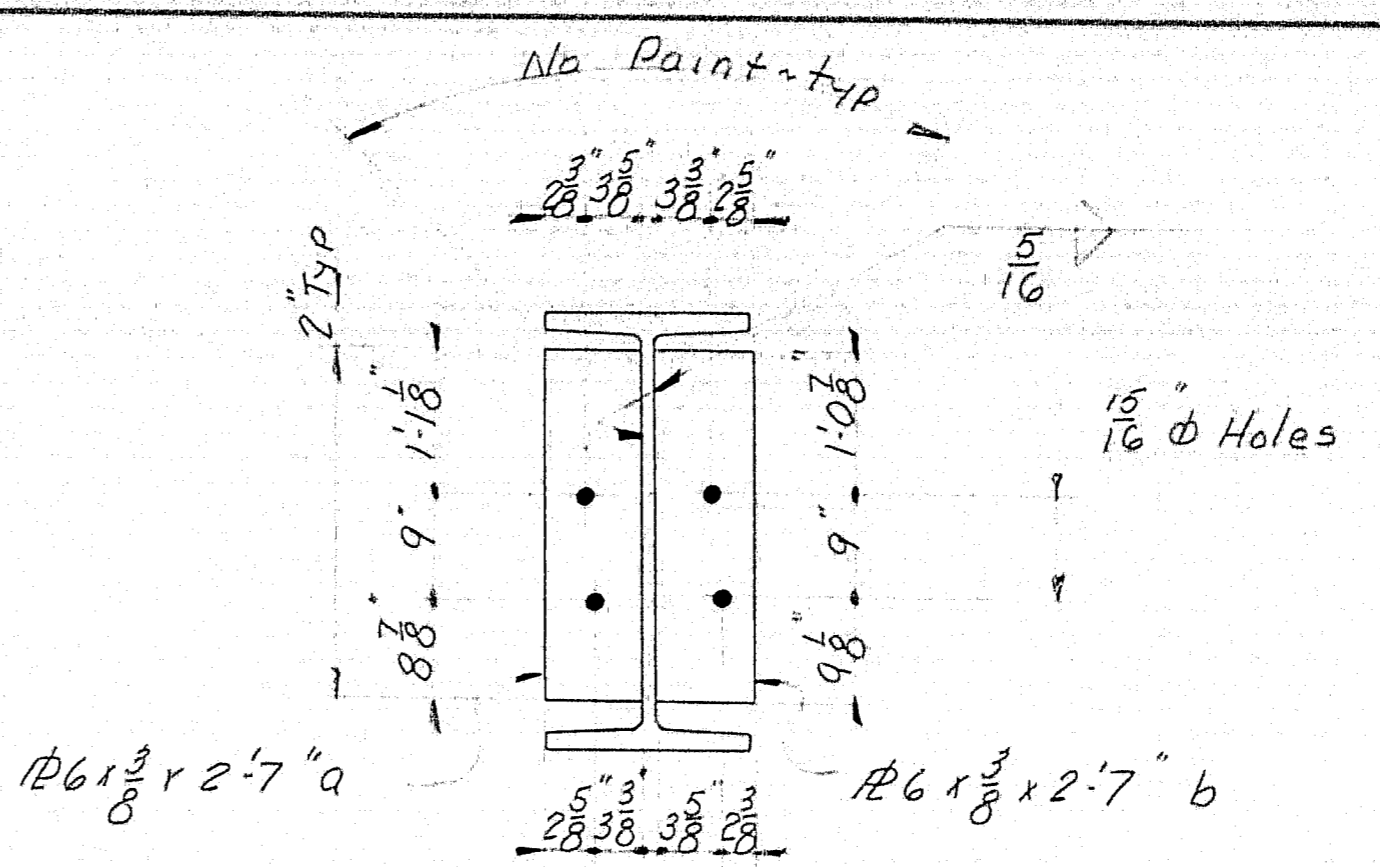
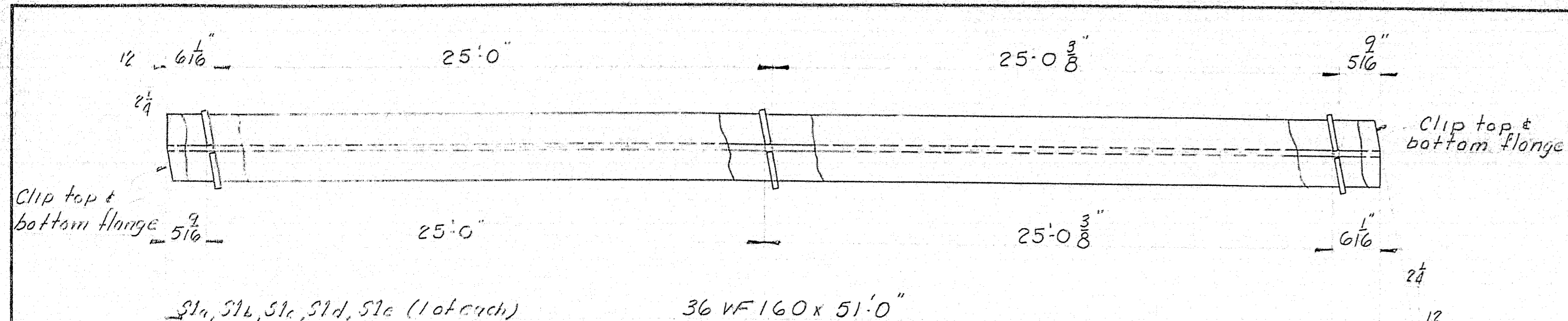
ITEM 702-103 (except as noted)

SHOP CONNECTIONS: Welded
FIELD CONNECTIONS: Welded
HOLES: As Noted
PAINT: Per State of Maine Specs. & as noted.

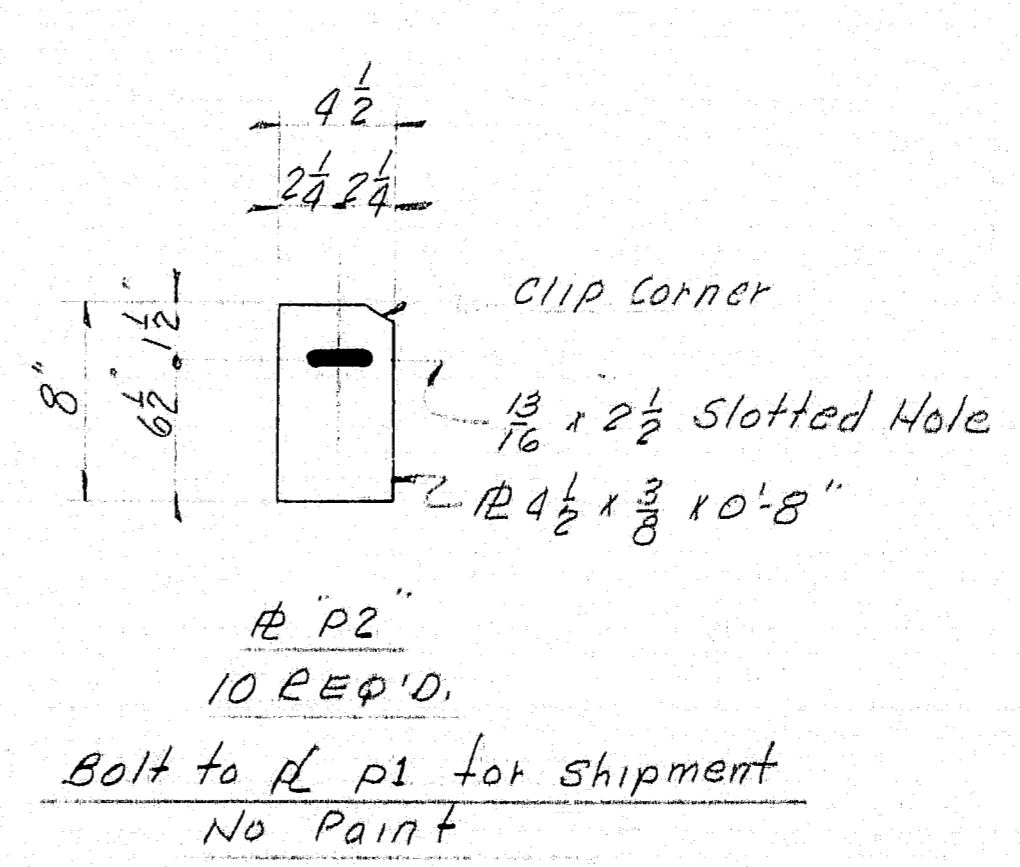
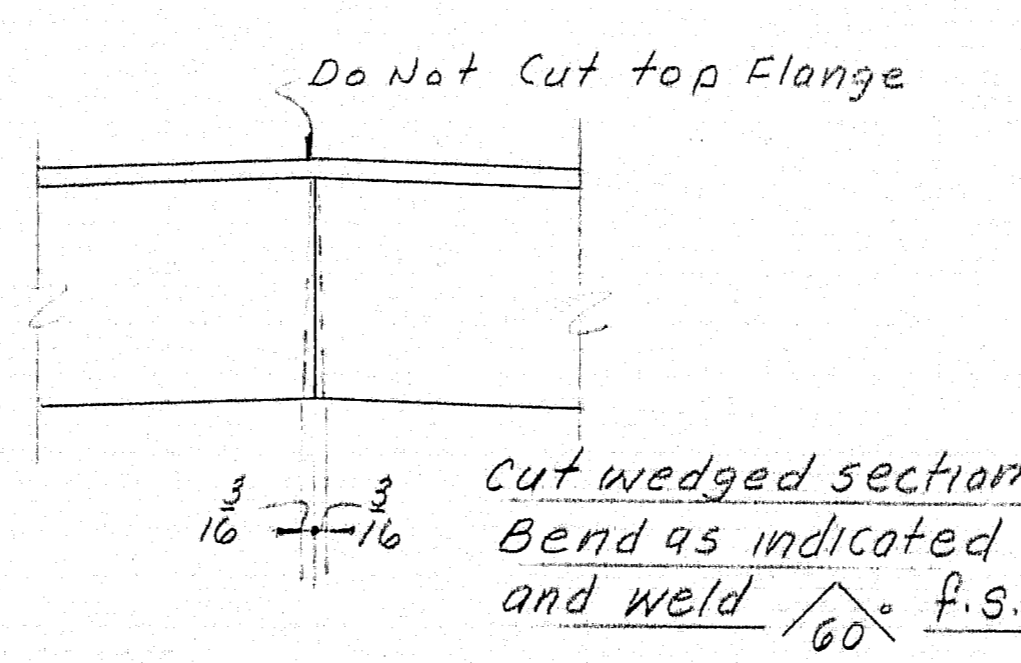
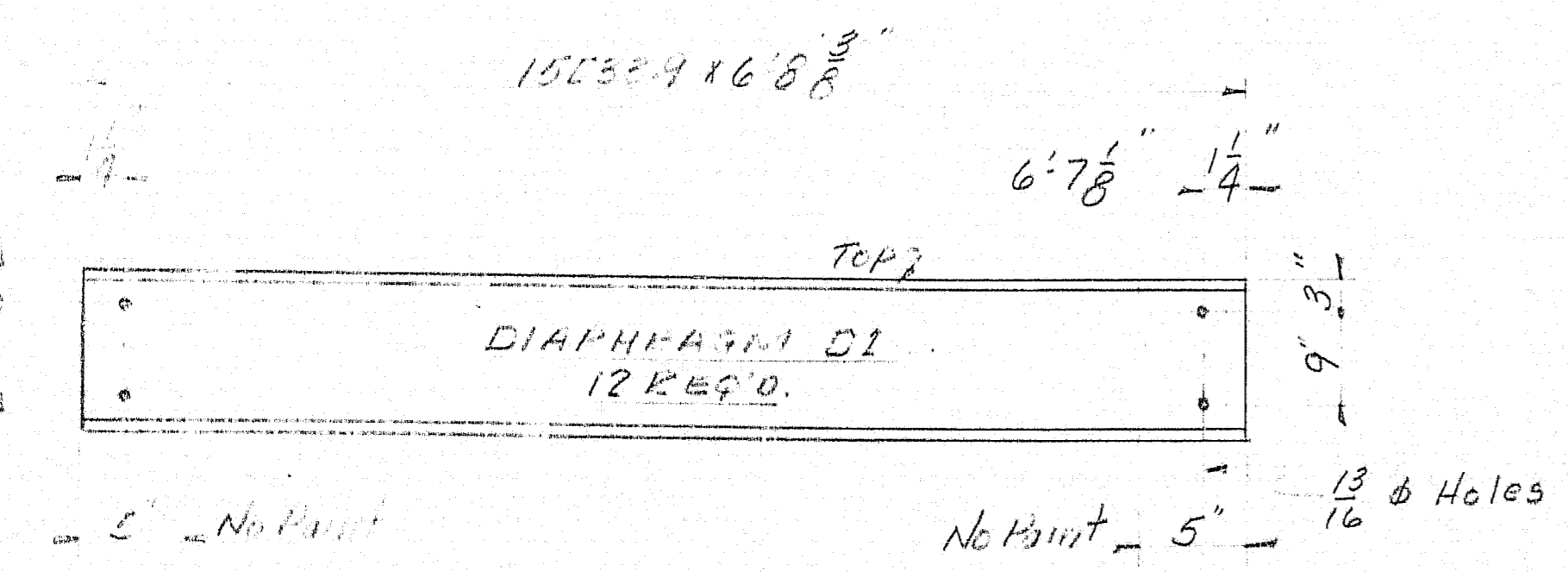
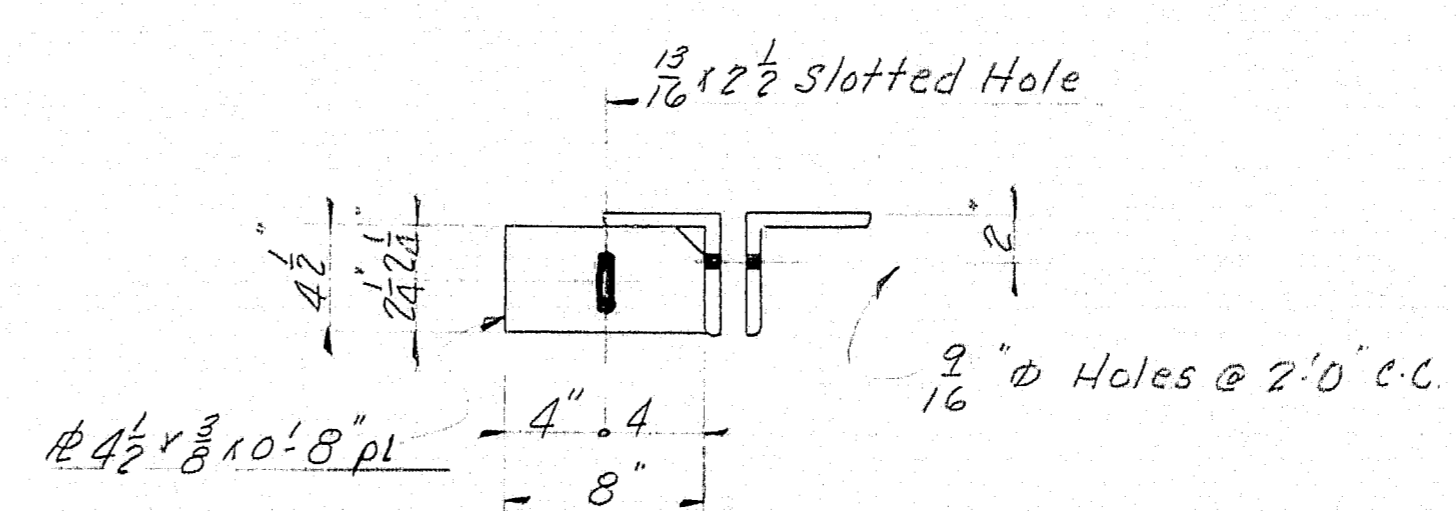
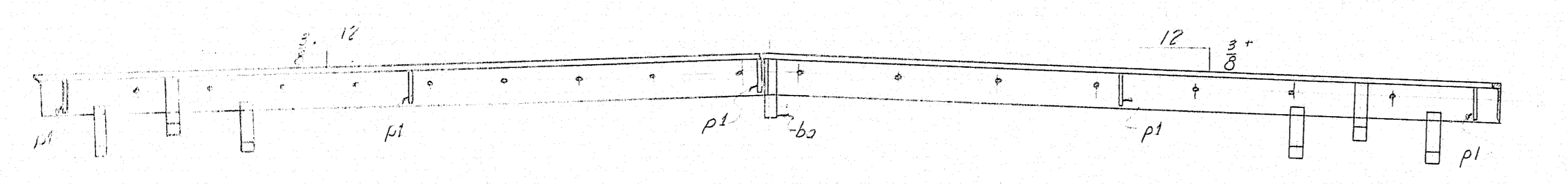
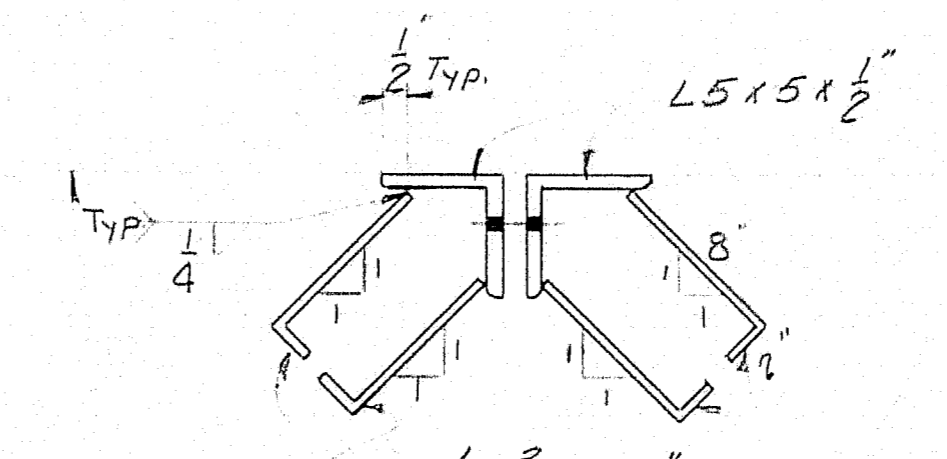
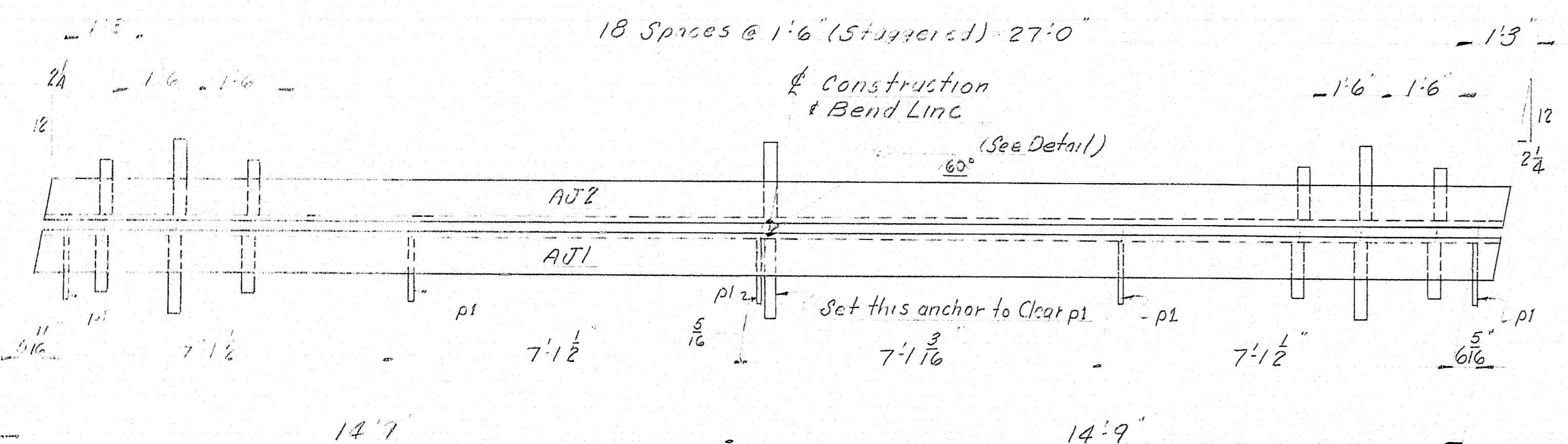
BEARING DETAILS
Bancroft & Martin Rolling Mills Company
South Portland, Maine
CROOKED RIVER BRIDGE
ALBANY, MAINE
CUSTOMER: H.E. SARGENT, INC.
DESIGNER: MAINE S.H.C. BRIDGE DIV.
ORDER NO. VEPRAL DWG. NO. 60-459-S1

DRAWN	9-20-60 RGM
REVISION	
REVISION	
REVISION	





"a" f.s. on S1b, n.s. on S1d
 n.s. & f.s. on S1c
 # "b" n.s. on S1a & S1b
 f.s. on S1d & S1e



SHIP		BILL OF MATERIAL				DWG. NO. 60-459-52	
MARK	NO.	MARK	SHAPE	LENGTH	WT.	WT. DED.	REMARKS
S1a	1		36 WF 160	51' 0"			3"
S1b	1		00	51' 0"			3"
S1c	1		00	51' 0"			3"
S1d	1		00	51' 0"			3"
S1e	1		00	51' 0"			3"
D1	12		15E33.4	6' 9"			
AJ1	2		L5 x 5 x 1/2	29' 7 1/2"			1"
AJ2	2		00	29' 7 1/2"			1"
12	a		$\#6 \times \frac{3}{8}$	2' 7"			
12	b		00	2' 7"			
76	ba		FA 1 1/2 x 3/8	0' 10"			
10	pl		$\#4 \frac{1}{2} \times \frac{3}{8}$	0' 8"			
10	pl		00	0' 8"			
10	shop		$\frac{3}{4}$ " ϕ M.Bolt	0' 1 1/4"			
Field	50		$\frac{3}{4}$ " ϕ M.Bolt	0' 2"			

SHOP CONNECTIONS: WELDED
 FIELD CONNECTIONS: WELDED & BOLTED
 HOLES: 25 NOTED
 PAINT: Paint per state of Maine specs, and as noted

STEINBERG DIAPHRAGM & END DAM DETAILS
 Bancroft & Martin, Rolling Mills Company
 South Portland, Maine
 CROOKED RIVER BRIDGE
 ALBANY, MAINE
 CUSTOMER: H.E. SARGENT, INC.
 DESIGNER: MAINE S.H.C. BRIDGE DIV.
 ORDER NO. VERBAL DWG. NO. 60-459-52

DRAWN	92260 R.E.M.
REVISION	
REVISION	
REVISION	

