

STATE OF MAINE
DEPARTMENT OF TRANSPORTATION



LIST OF DRAWINGS

Title Sheet	1
Quantities & Notes	2
General Plans - Sagadahoc	3-5
Typical Sections	6
Plans & Details - Max Wilder	7

BATH
SAGADAHOC BRIDGE
OVER
KENNEBEC RIVER
Route US1
BH-1668(300)X
PROJECT LENGTH 0.610 mi.
WEARING SURFACE REPLACEMENT
BRIDGE NO. 6388

ARROWSIC
MAX WILDER BRIDGE
OVER
SASANOA RIVER
Route 127
BH-1685(200)X
PROJECT LENGTH 0.178 mi.
WEARING SURFACE REPLACEMENT
BRIDGE NO. 2026

SPECIFICATIONS

Design: Load and Resistance Factor Design per AASHTO LRFD Bridge Design Specifications, Fourth Edition 2007 and Interim Specifications through 2008.

TRAFFIC DATA

	SAGADAHOC	MAX WILDER
Current (2010) AADT	26,760	3,440
Future (2030) AADT	32,110	4,130
DHV - % of AADT	11	12
Design Hour Volume	3,532	454
Heavy Trucks (% of AADT)	6	7
Heavy Trucks (% of DHV)	4	4
Directional Distribution (% of DHV)	59	50
18 kip Equivalent P 2.0	1,202	129
18 kip Equivalent P 2.5	1,146	118

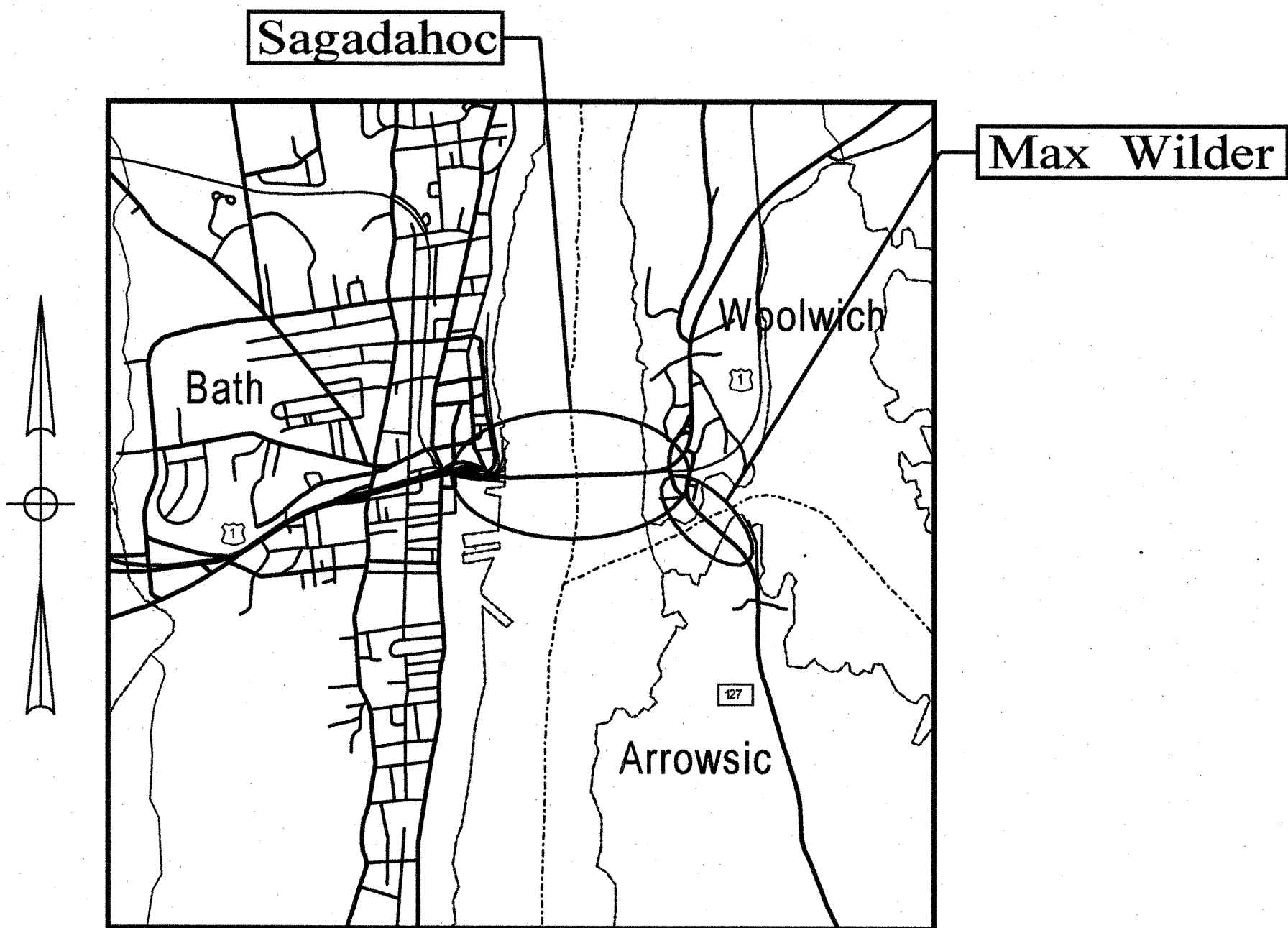
UTILITIES

Sagadahoc	Max Wilder
Central Maine Power Company	Central Maine Power Company
Fairpoint Communications	Comcast
Bath Water District (in approaches)	

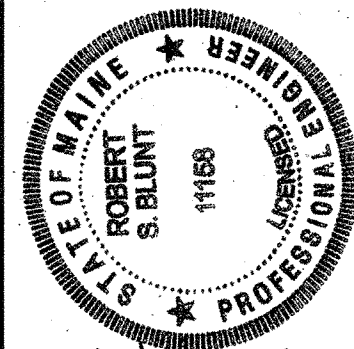
MAINTENANCE OF TRAFFIC

Sagadahoc: Maintain two 12'-0" wide lanes at all times, except from 10:00am to 6:00pm the contractor must maintain one 12'-0" Southbound lane and one 12'-0" Northbound lanes.

Max Wilder: Maintain one 11'-0" lane alternating traffic in each direction with a temporary traffic signal.



LOCATION MAP



SIGNATURE
P.E. NUMBER
DATE

PROGRAM	BRIDGE
PROJECT MANAGER	J. WENTWORTH
DESIGNER	R. BLUNT
CONSULTANT	
PROJECT RESIDENT	S. PAUL
CONTRACTOR	
PROJECT COMPLETION DATE	JULY 2, 2010

SAGADAHOC BRIDGE
MAX WILDER BRIDGE
BATH/ARROWSIC SAGADAHOC COUNTY
TITLE SHEET

SHEET NUMBER
1
OF 7

BH-1668(300)X / BH-1685(200)X PIN 16683.00 / 16852.00

SUPERSTRUCTURE NOTES

1. Depress the bituminous wearing surface around the existing bridge drains as directed by the Resident.
2. After the existing wearing surface and membrane have been removed the Contractor may be directed by the Resident to rehabilitate areas of the deck. Payment will be made under the appropriate rehabilitation item.
3. All reinforcing steel that is exposed and to be reused shall be cleaned by a method approved by the Resident. Payment shall be incidental to related Contract Items.
4. If the depth of the deteriorated concrete is below the reinforcing steel then remove the concrete to a minimum depth of 1 inch below the bars.
5. The Contractor shall take care not to damage the reinforcing steel to remain. Any damaged reinforcing steel shall be replaced as directed by the Resident at no expense to the Department.
6. Any damage to the existing concrete to remain resulting from the work performed by the Contractor shall be repaired by a method approved by the Resident at no expense to the Department.
7. Reinforcing steel shall have a 2 inch minimum cover unless otherwise noted.
8. Care shall be taken when placing the membrane waterproofing not to cover the 1 inch diameter weep holes in the deck.

ESTIMATED QUANTITIES					
		SAGADAHOC BRIDGE PIN 16683.00	MAX WILDER BRIDGE PIN 16852.00		
ITEM NO.	DESCRIPTION	QUANTITY	QUANTITY	TOTAL	UNIT
202.127	REMOVE EXISTING BITUMINOUS PAVEMENT	28,650	2,490	1	LS
202.206	RUMBLE STRIP - EDGETLINE AND CENTERLINE	3,205		3,205	LF
403.2101	9.5 MM POLYMER MODIFIED HOT MIX ASPHALT	2,960	343	3,303	T
409.15	BITUMINOUS TACK COAT - APPLIED	1,185	125	1,310	G
508.14	HIGH PERFORMANCE WATERPROOFING MEMBRANE	21,765	2,500	1	LS
514.06	CURING BOX FOR CONCRETE CYLINDERS		1	1	EA
515.21	PROTECTIVE COATING FOR CONCRETE SURFACES		630	1	LS
518.50	REPAIR OF UPWARD FACING SURFACES - TO RE-STEEL < 7.9 IN.		215	215	SF
518.51	REPAIR OF UPWARD FACING SURF - BELOW RE-STEEL < 7.9 IN.		55	55	SF
520.241	BRIDGE JOINT MODIFICATION TYPE I		4	4	EA
526.301	TEMPORARY CONCRETE BARRIER TYPE I	80	50	1	LS
527.34	WORK ZONE CRASH CUSHIONS	2	2	4	UN
627.733	4 INCH WHITE OR YELLOW PAINTED PAVE MRK LINE	25,630	2,500	28,130	LF
627.9	PAVEMENT PAINTING	500		500	SF
629.05	HAND LABOR, STRAIGHT TIME	20	20	40	HR
639.18	FIELD OFFICE TYPE A	0.5	0.5	1	EA
643.72	TEMPORARY TRAFFIC SIGNAL : (MAX WILDER BRIDGE)		1	1	LS
652.33	DRUM	90	50	140	EA
652.34	CONE	150	50	200	EA
652.35	CONSTRUCTION SIGNS	200	200	400	SF
652.361	MAINTENANCE OF TRAFFIC CONTROL DEVICES	30 CD	30 CD	1	LS
652.38	FLAGGER	150	150	300	HR
652.381	TRAFFIC OFFICERS	40		40	HR
652.41	PORTABLE CHANGEABLE MESSAGE SIGN	2	1	3	EA
659.10	MOBILIZATION	1	1	1	LS

GENERAL CONSTRUCTION NOTES

1. Max Wilder Bridge only - Protective Coating for existing Concrete Surfaces shall be applied to the following areas:
- All exposed surfaces of concrete curbs and sidewalks,
Fascias down to the drip notch,
All exposed surfaces of Concrete Transition Barriers,
- Concrete Transition barrier,
Top of abutment backwalls
2. Project information referred to below may be accessed at the following MaineDOT web address: <http://www.maine.gov/mdot/comprehensive-list-projects/project-information.php>.
3. The existing bridge plans may be accessed at the MaineDOT web address. The plans are reproductions of the original drawings as prepared for the construction of the bridge. It is very unlikely that the plans will show any construction field changes or any alterations which may have been made to the bridge during its life span.
4. The bridge deck evaluation report of the existing bridge may be accessed at the MaineDOT web address. The report contains visual inspection information and deck core data of the bridge. There is no assurance that the information or data is a true representation of the conditions of the entire deck.
5. Quantities included for pay items measured and paid for by Lump Sum are estimated quantities and are provided by MaineDOT for informational purposes only. Lump Sum pay items will be paid for at the Contract Bid amount, with no addition or reduction in payment to the Contractor if the actual final quantities are different from the MaineDOT provided estimated quantities, except as follows:
- a. If a Lump Sum pay item is eliminated, the requirements of Standard Specifications Section 109.2, Elimination of Items, will take precedence.
- b. If other Contract Documents specifically allow a change in payment for a Lump Sum pay item, those requirements will be followed.
- c. If a design change results in changes to estimated quantities for Lump Sum pay items, price adjustments will be made in accordance with Standard Specifications Section 109.7, Equitable Adjustments to Compensation.
6. The Contractor shall survey all grades & pavement markings & locations prior to construction. Upon completion of the project all grades & pavement markings shall be restored by the Contractor.
7. All dimensions based on or relating to the existing bridges shall be verified in the field by the Contractor, i.e., existing joint opening, joint length and backwall width.
8. Refer to Standard Details Sections 502 and 520 for details and information not shown.
9. All concrete surfaces where elastomeric concrete is to be applied shall have a 1/4 -in. minimum anchor profile or roughened surface.
10. Elastomeric concrete shall be applied according to the manufacturer's recommendations.
11. The Contractor shall be fully responsible for selecting the appropriate seal based on the movement rating.

STATE OF MAINE
DEPARTMENT OF TRANSPORTATION
BH-1668(300)X / BH-1685(200)X
BRIDGE NO. 6388 / 2028
PIN 16683.00 / 16852.00
BRIDGE PLANS

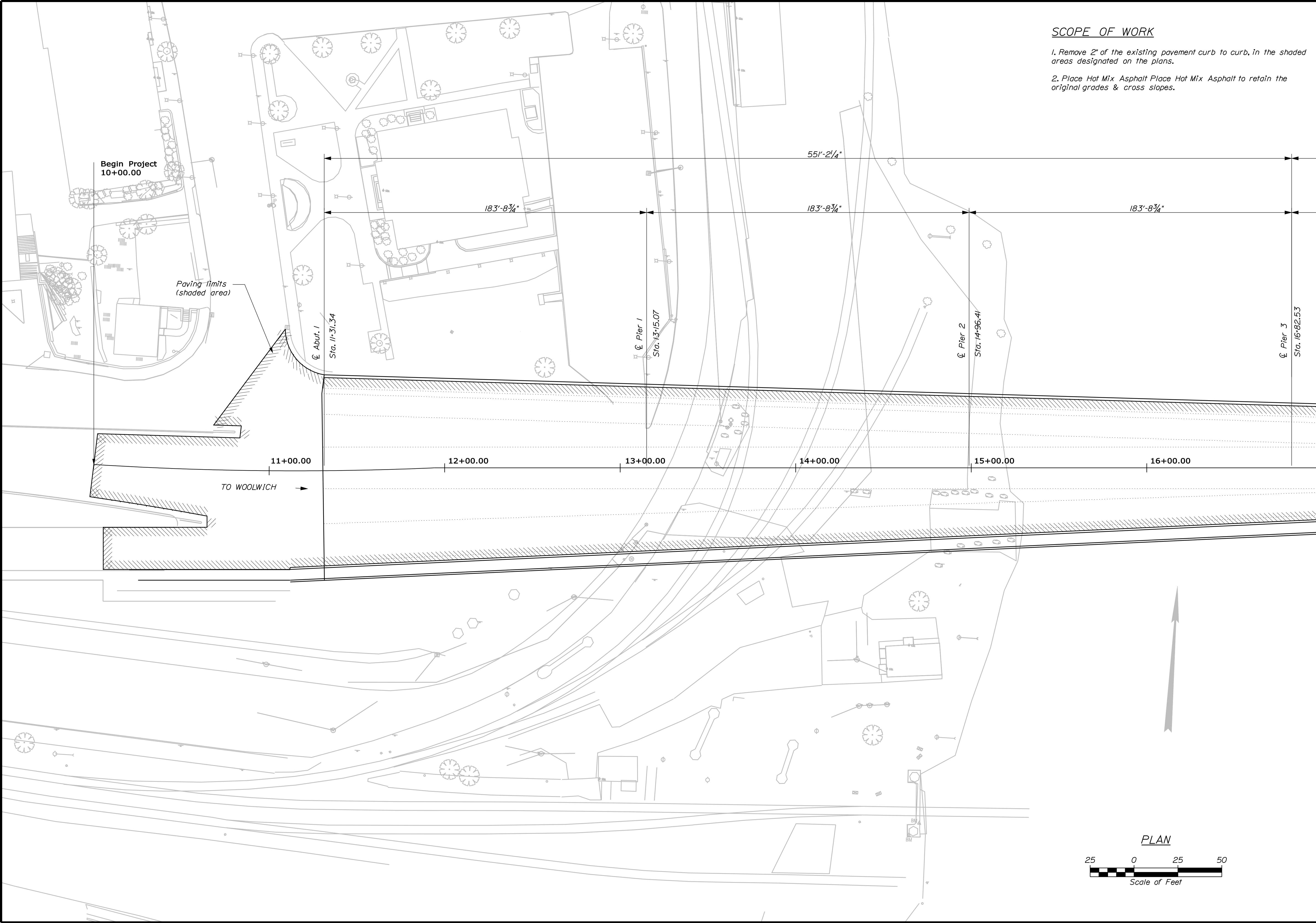
SAGADAHOC BRIDGE
MAX WILDER BRIDGE
BATH/ARROWSIC SAGADAHOC COUNTY
ESTIMATED QUANTITIES

SHEET NUMBER
2
OF 7

PROJ. MANAGER
DESIGN-DETAILED
CHECKED-REVIEWED
DESIGN-DETAILED
REVISIONS 1
REVISIONS 2
REVISIONS 3
REVISIONS 4
FIELD CHANGES

DATE
BY
JOW
ADN
RSB

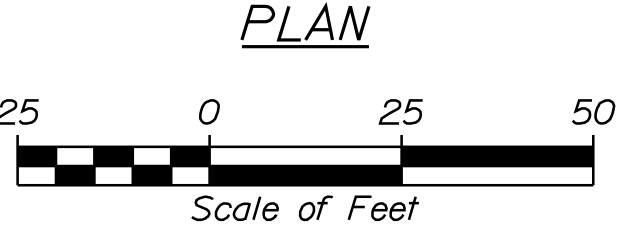
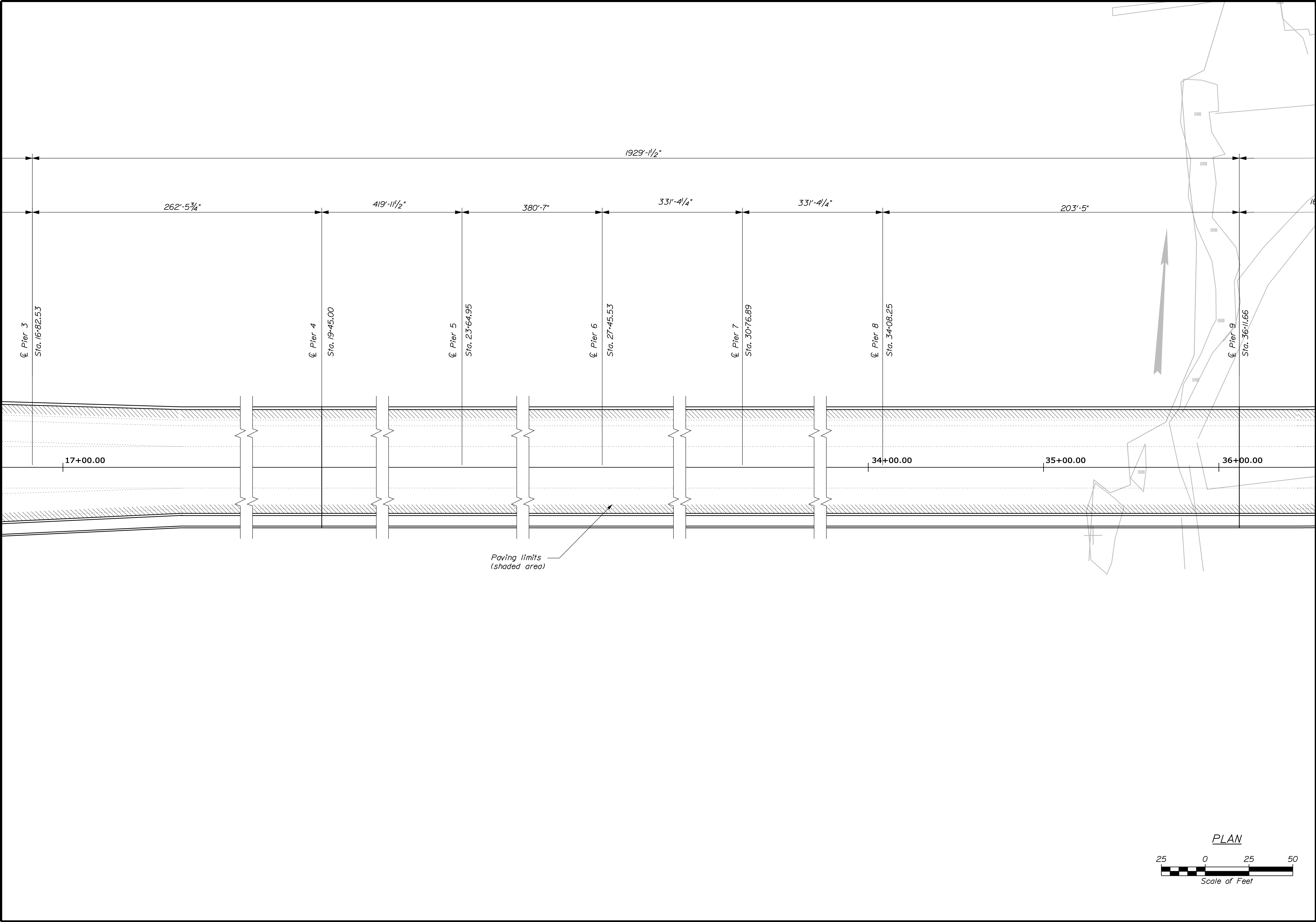
SIGNATURE
P.E. NUMBER
DATE



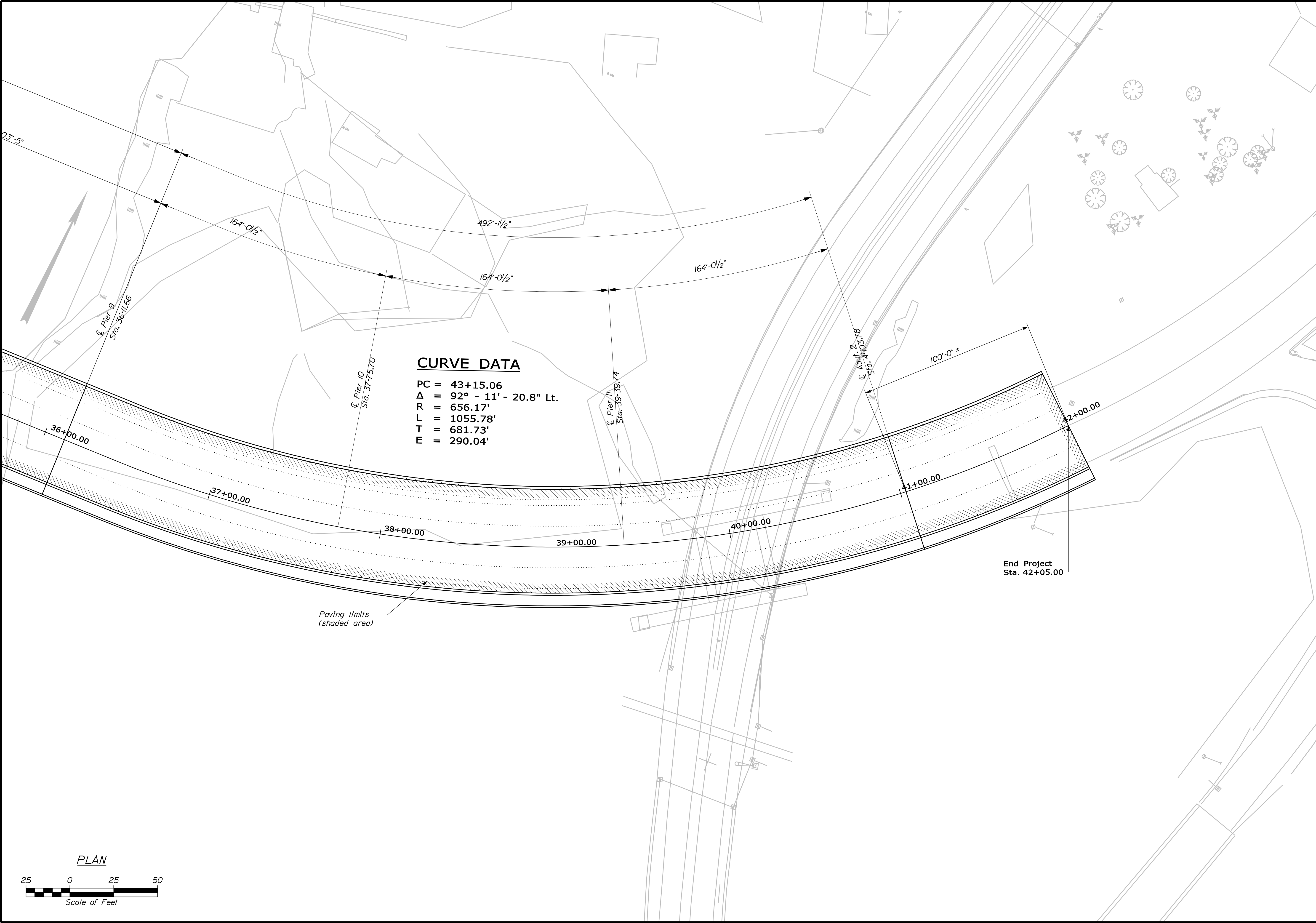
SCOPE OF WORK

1. Remove 2" of the existing pavement curb to curb, in the shaded areas designated on the plans.
2. Place Hot Mix Asphalt Place Hot Mix Asphalt to retain the original grades & cross slopes.

SAGADAHOC BRIDGE KENNEBEC RIVER BATH	STATE OF MAINE DEPARTMENT OF TRANSPORTATION			
	BH-1668(300)X			
	BRIDGE NO. 6398 PIN 16683.00 BRIDGE PLANS			
SHEET NUMBER 3 OF 7	PLANS			
	PROJ. MANAGER	DESIGN-DETAILED	CHECKED-REVIEWED	DATE
	JRW	RSB	ADN	
	DESIGNS-DETAILED	DESIGNS-DETAILED	SIGNATURE	
	REVISIONS 1	REVISIONS 2	P.E. NUMBER	
REVISIONS 3				DATE
REVISIONS 4				
FIELD CHANGES				



SHEET NUMBER		4		OF 7		SAGADAHOC BRIDGE				PROJ. MANAGER		JW	BY	DATE	STATE OF MAINE								
						KENNEBEC RIVER				DESIGN-DETAILED	RSB						ADN	DEPARTMENT OF TRANSPORTATION					
BATH		SAGADAHOC COUNTY				CHECKED-REVIEWED		DESIGN2-DETAILED2		DESIGN3-DETAILED3		SIGNATURE		BH-1668(300)X									
						REVISIONS 1		REVISIONS 2		P.E. NUMBER													
						REVISIONS 3		REVISIONS 4		DATE													
						FIELD CHANGES																	
PLANS						REVISIONS 1		REVISIONS 2		REVISIONS 3		REVISIONS 4		FIELD CHANGES		BRIDGE NO. 6398		PIN		16683.00		BRIDGE PLANS	
						REVISIONS 1		REVISIONS 2		REVISIONS 3		REVISIONS 4		FIELD CHANGES									



SHEET NUMBER

5

OF 7

BATH

SAGADAHOC BRIDGE
KENNEBEC RIVER
SAGADAHOC COUNTY

PLANS

DESIGN-DETAILED
CHECKED-REVIEWED
DESIGNS-DETAILED
REVISIONS 1
REVISIONS 2
REVISIONS 3
REVISIONS 4
FIELD CHANGES

PROJ. MANAGER
JW
BY
ADN
RSP

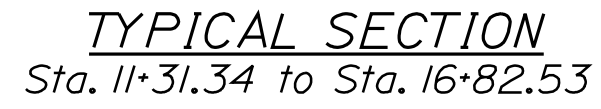
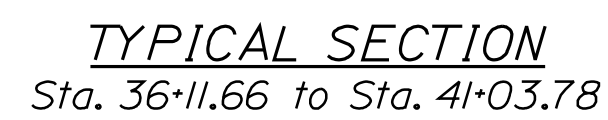
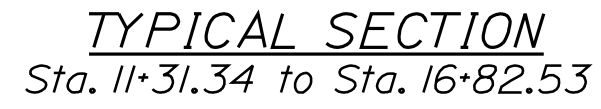
DATE

STATE OF MAINE
DEPARTMENT OF TRANSPORTATION

BH-1668(300)X

BRIDGE NO. 6388
PIN
16683.00

BRIDGE PLANS



SHEET NUMBER <div>6</div> <div>OF 7</div>	SAGADAHOC BRIDGE KENNEBEC RIVER SAGADAHOC COUNTY			PROJ. MANAGER	JDW	BY	DATE	
	BATH SAGADAHOC COUNTY SECTIONS			DESIGN-DETAILED	RSB	ADN		
				CHECKED-REVIEWED				SIGNATURE
				DESIGN2-DETAILED2				
				DESIGN3-DETAILED3				P.E. NUMBER
			REVISIONS 1					
			REVISIONS 2					
			REVISIONS 3					
			REVISIONS 4					
FIELD CHANGES						DATE		
STATE OF MAINE DEPARTMENT OF TRANSPORTATION BH-1668(300)X BRIDGE NO. 6388 PIN 16683.00 BRIDGE PLANS								

