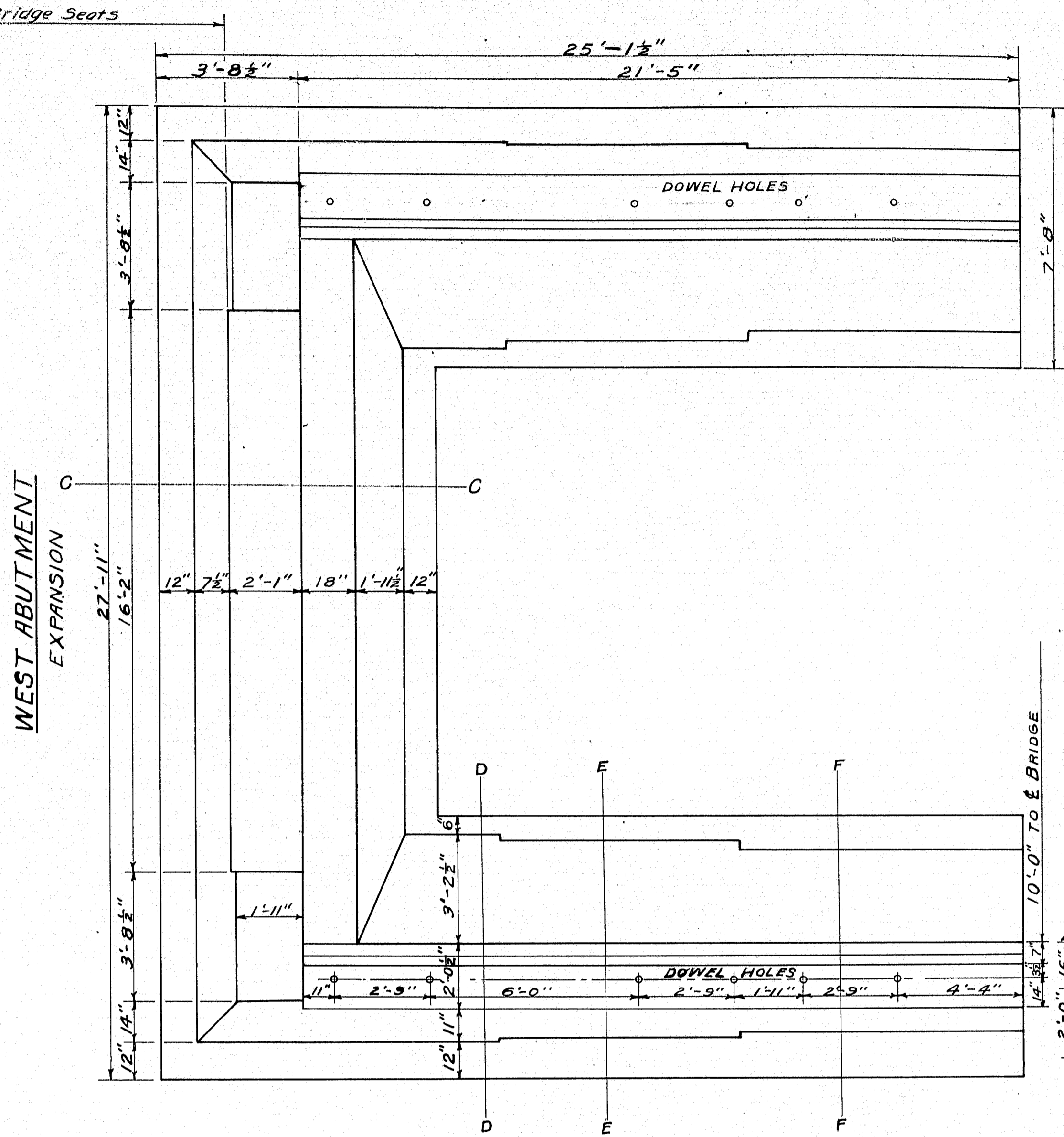
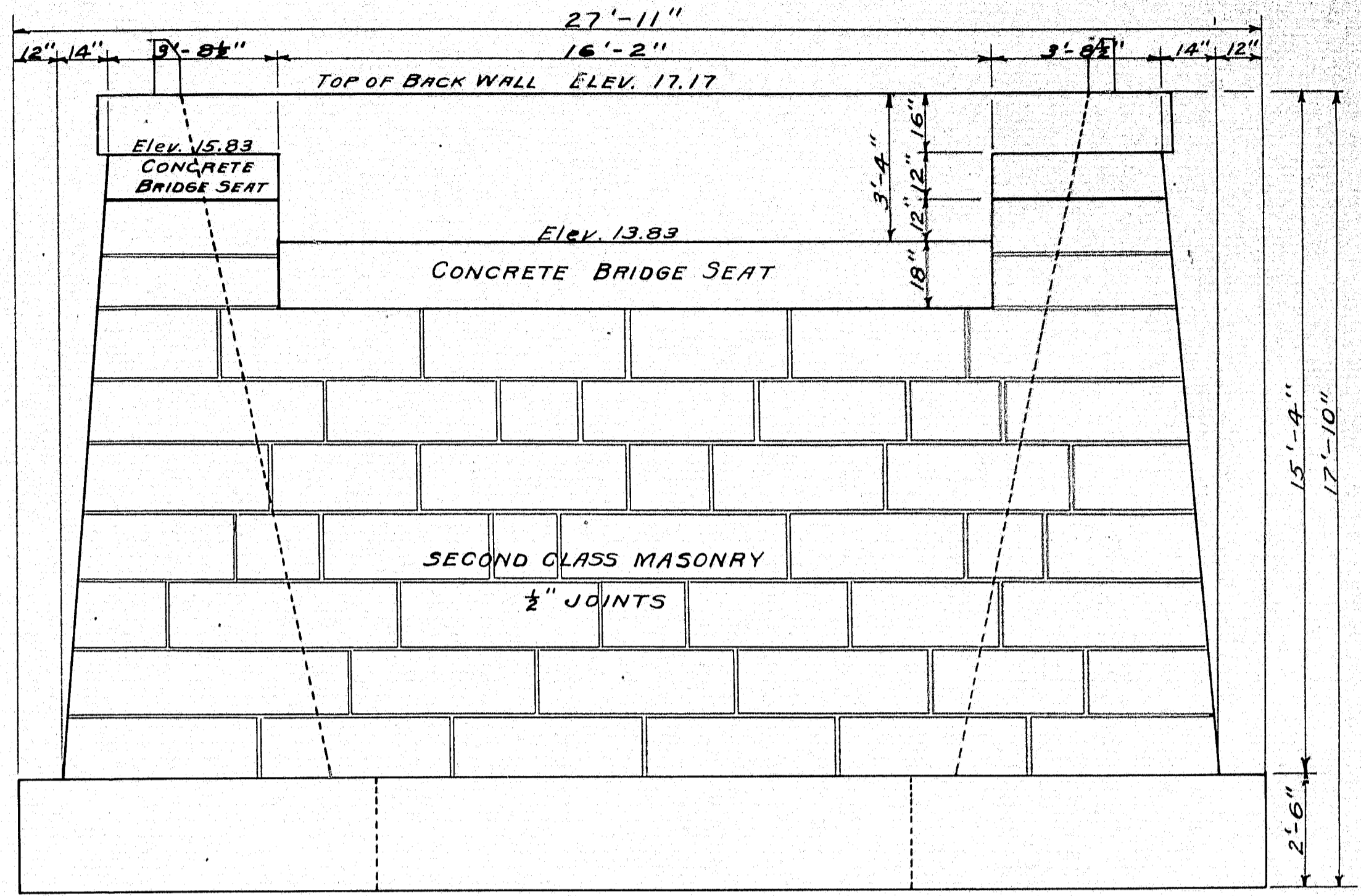


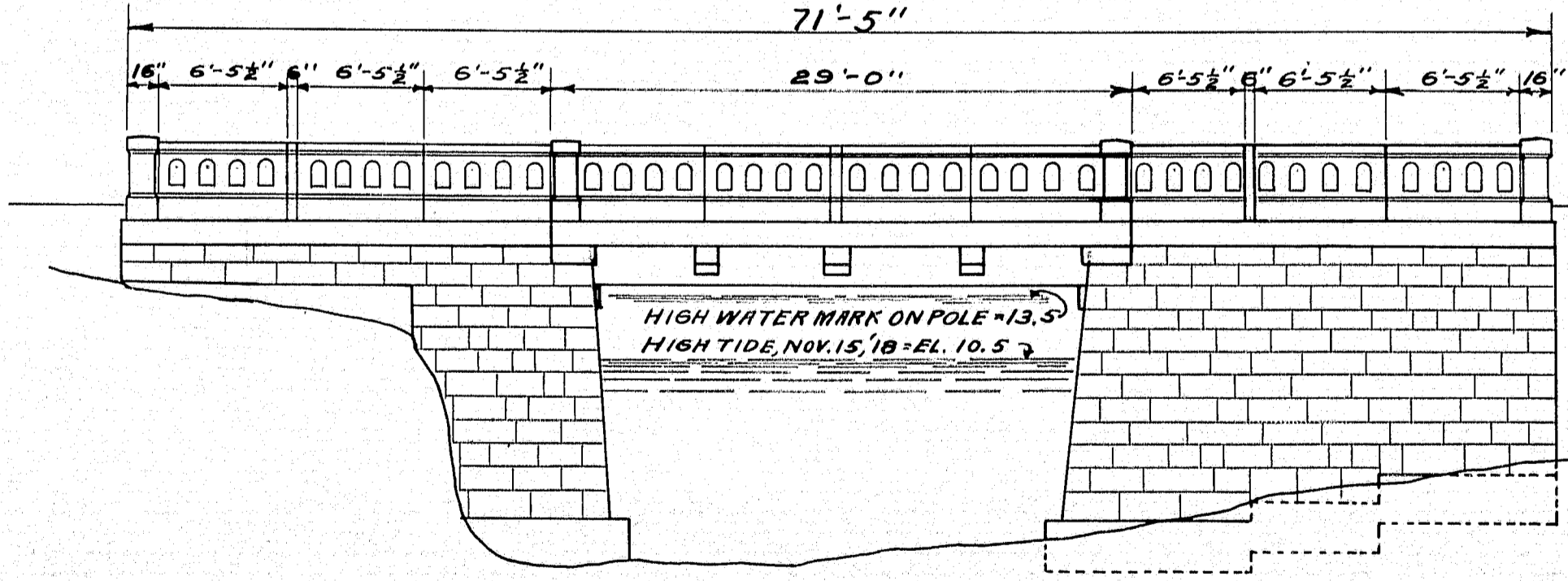
EAST ABUTMENT



WEST ABUTMENT EXPANSION

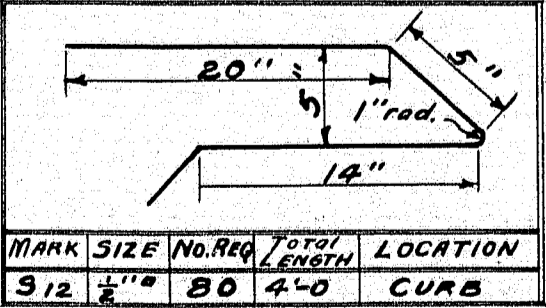
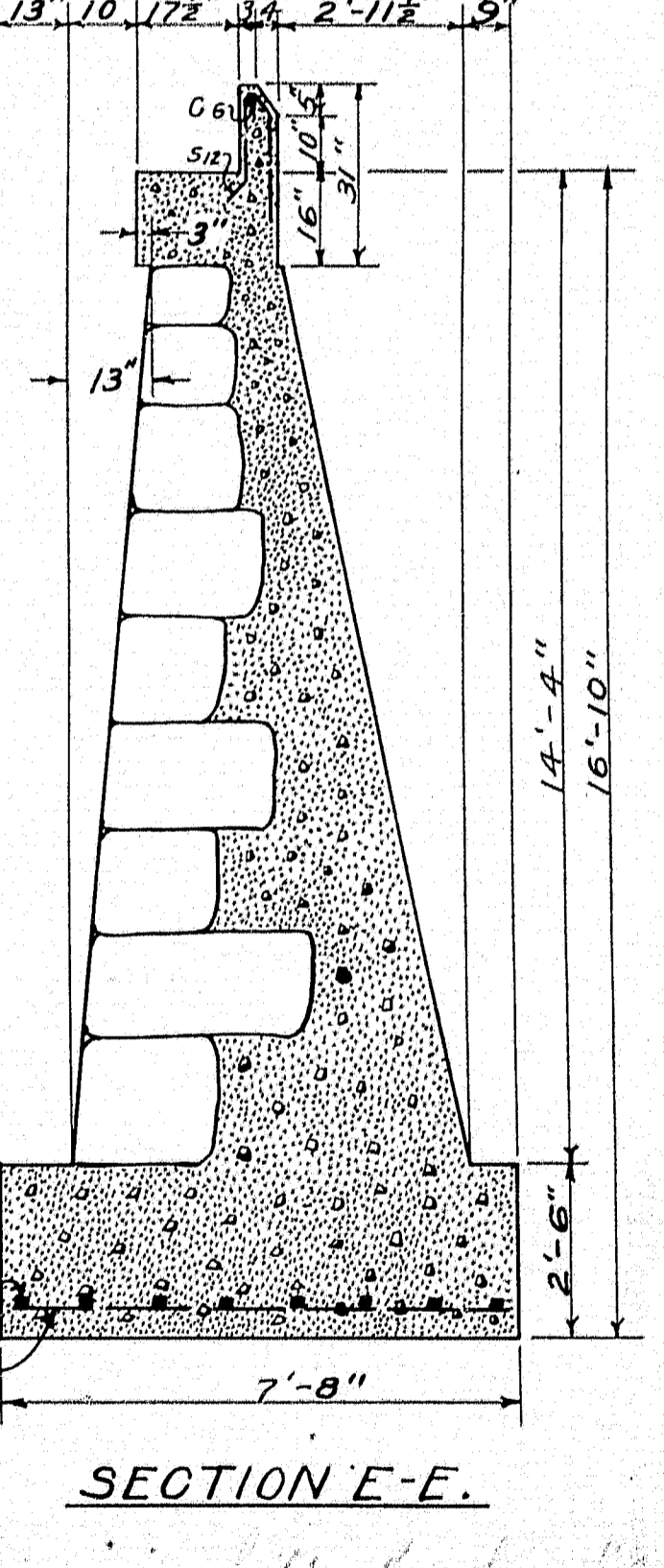
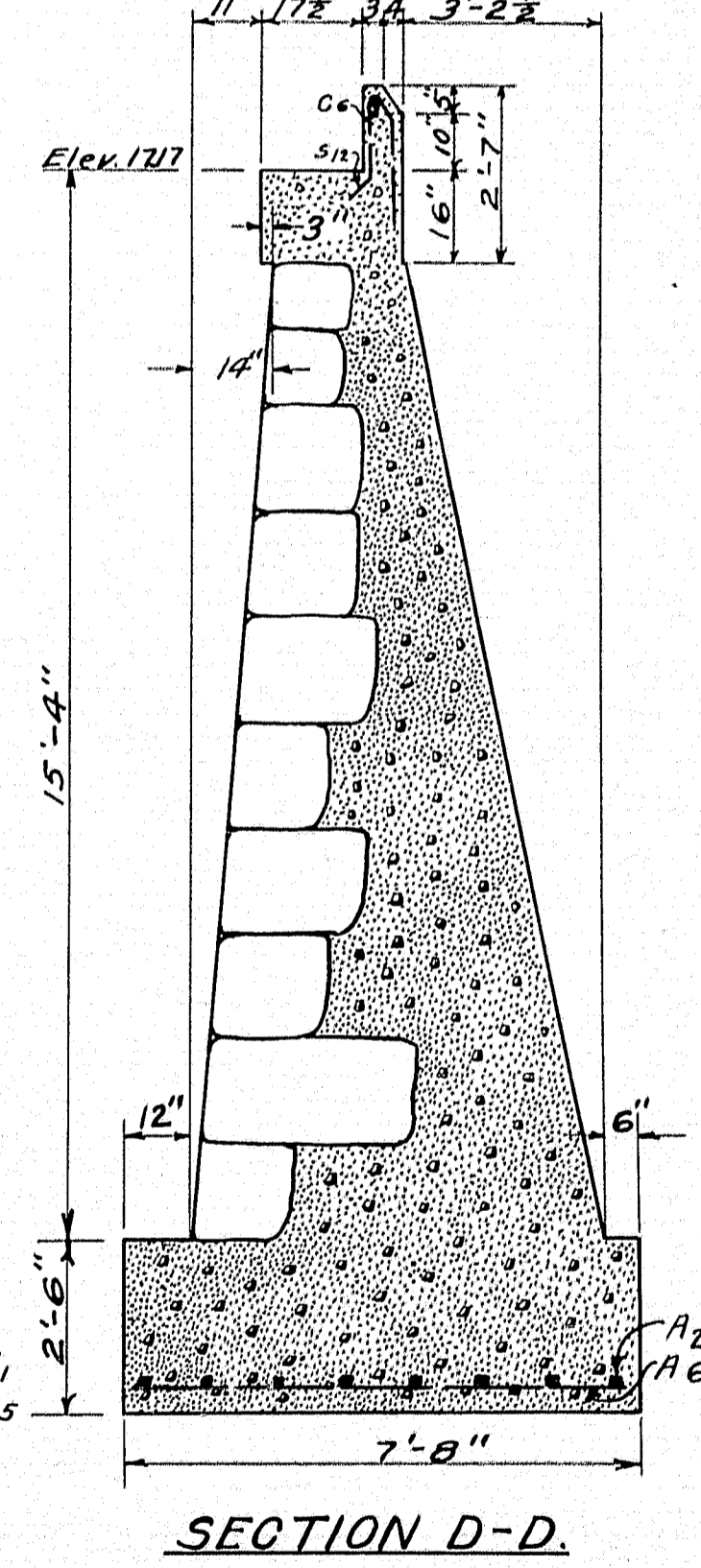
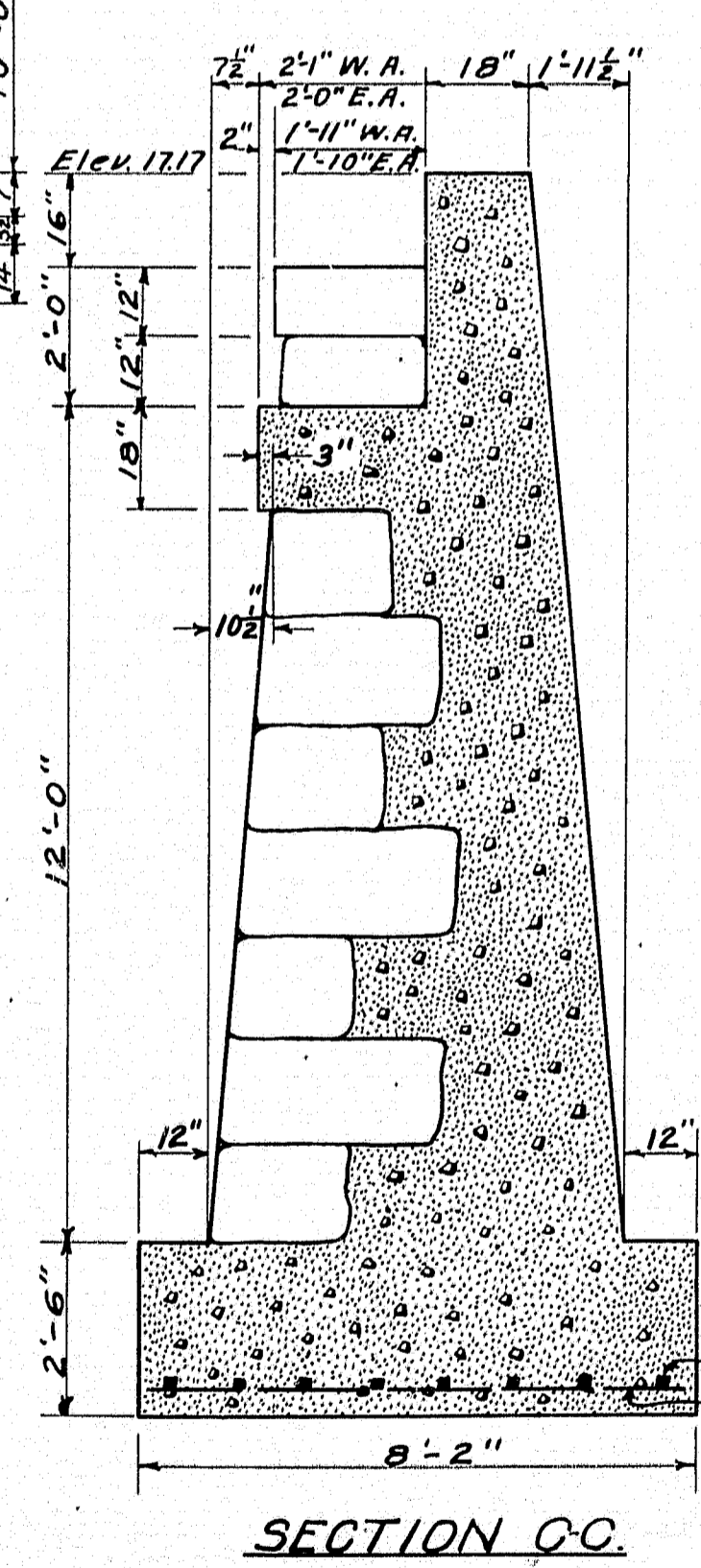
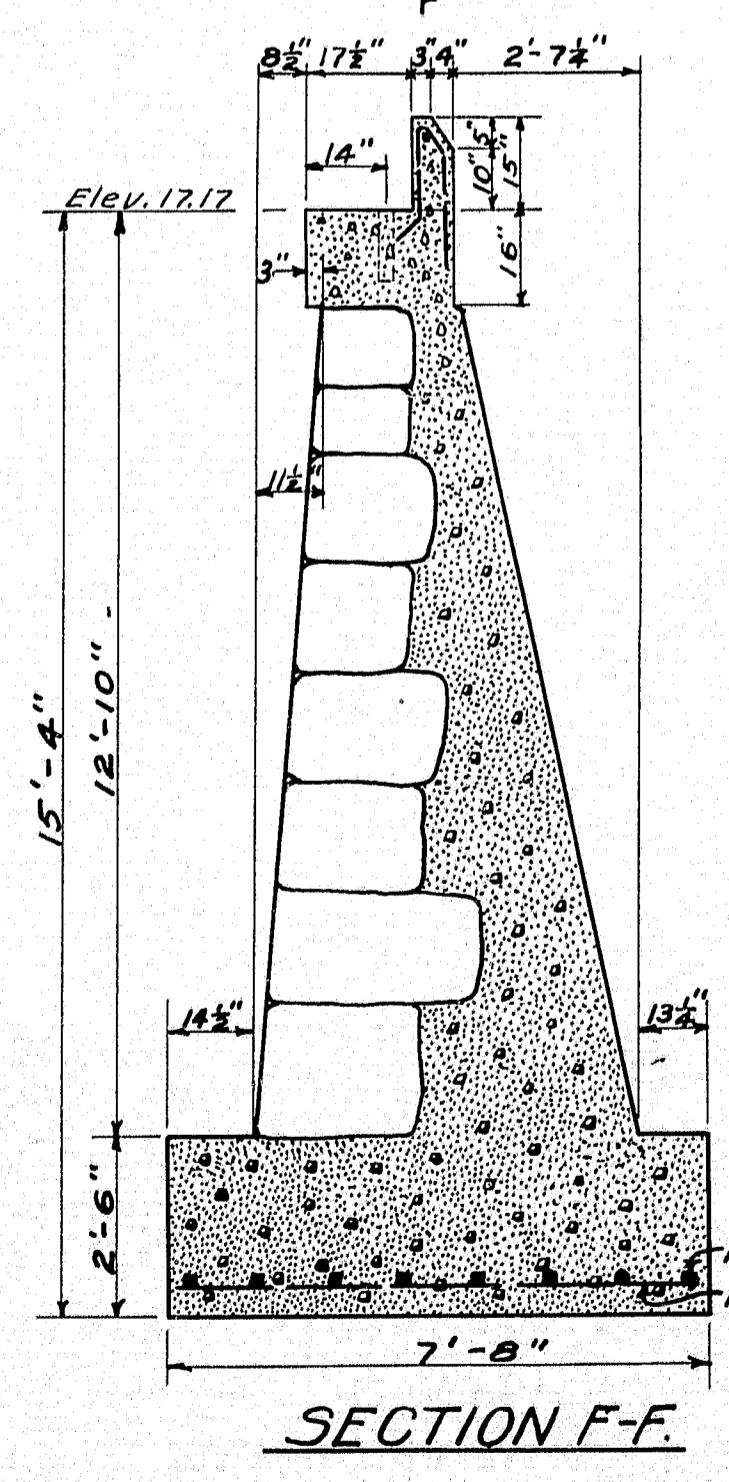
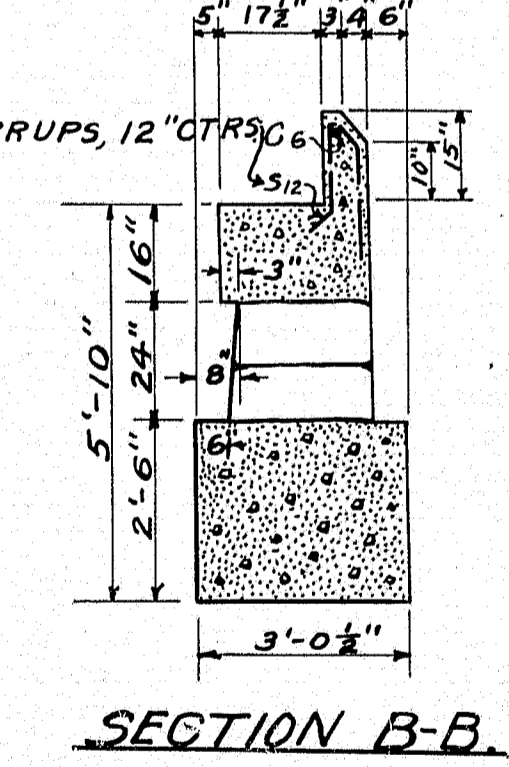
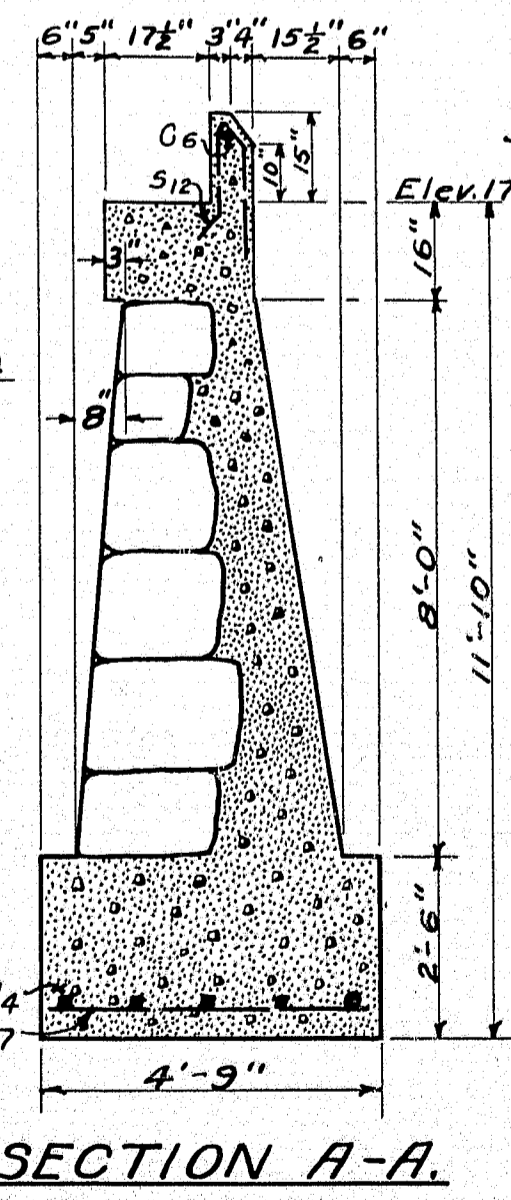


FRONT ELEVATION OF ABUTMENT



GENERAL ELEVATION  
SCALE, 1/8" = 1'

NOTE:  
IF FOUNDATION IS ON LEDGE BARS IN FOOTING MAY BE OMITTED.



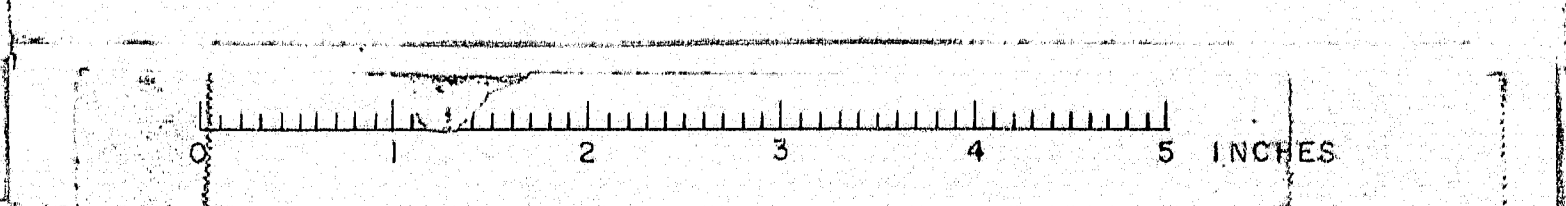
MARK	SIZE	No. REQ.	LENGTH	LOCATION
A1	3/8"	16	27'-8"	ABUT. FOOTING
A2	"	16	24'-10"	" "
A3	"	16	12'-0"	" "
A4	"	5	13'-0"	" "
A5	"	26	7'-10"	" "
A6	"	40	7'-4"	" "
A7	"	13	4'-6"	" "

MARK	SIZE	No. REQ.	LENGTH	LOCATION
C6	3/4"	4	21'-0"	CURB
R1	"	60	3'-10"	RAILING
R2	"	72	6'-7"	" "
R3	1 1/2"	24	2'-0"	" "
P1	1"	4	5'-0"	INT. POSTS
P2	1/2"	16	5'-2"	END "
P3	3/4"	24	3'-10"	" "

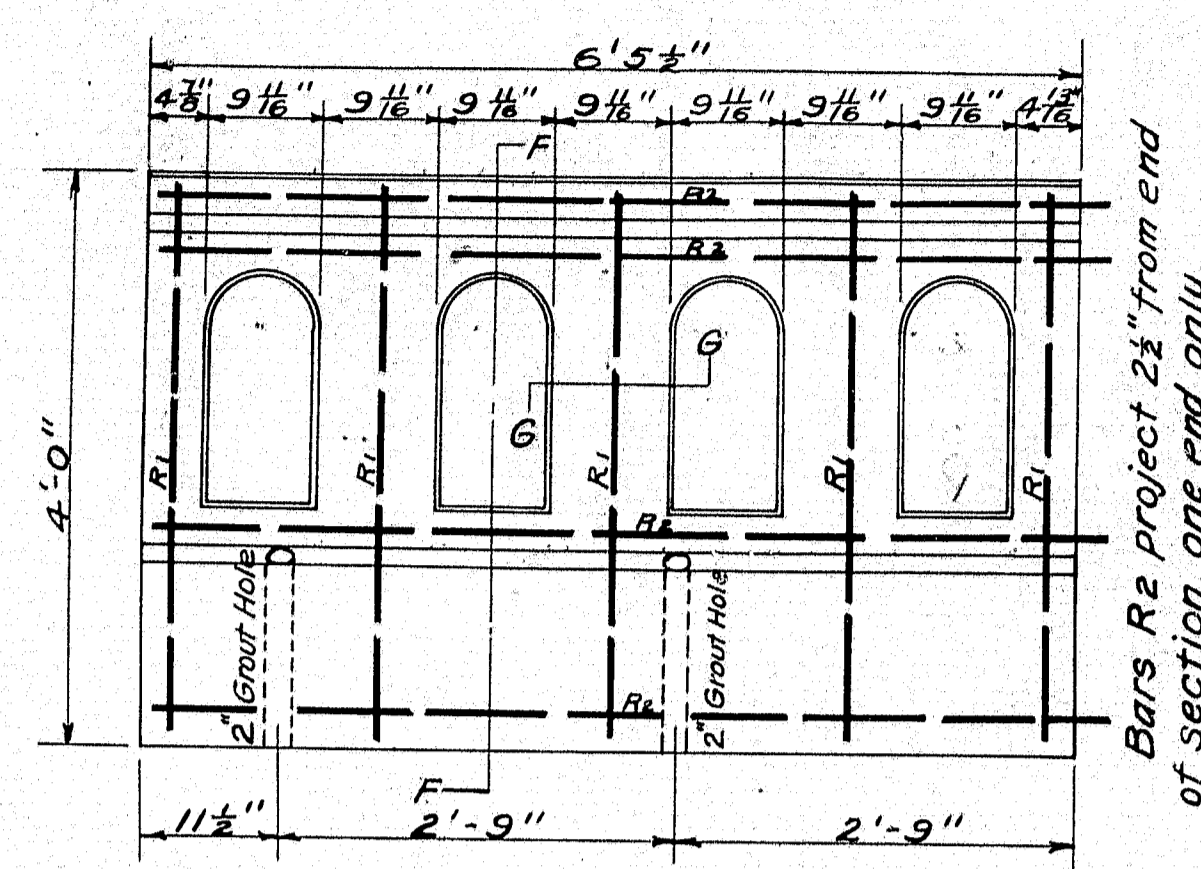
NOTE - P2 TO BE BENT AS SHOWN ON PLAN C.S. 25-20.

PLAN OF BRIDGE ABUTMENTS  
STA. 238+90  
"N" PERRY  
SCALE 3/8" = 1' B-5-19.

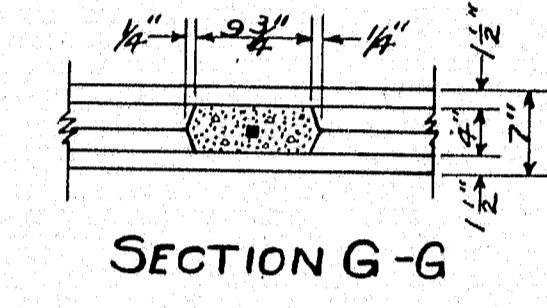
M22



FED. ROAD DIST. NO.	STATE	FED. AID PROJ. NO.	FISCAL YEAR	SHEET NO.	TOTAL SHEETS
9	MAINE	5	1920	32	93

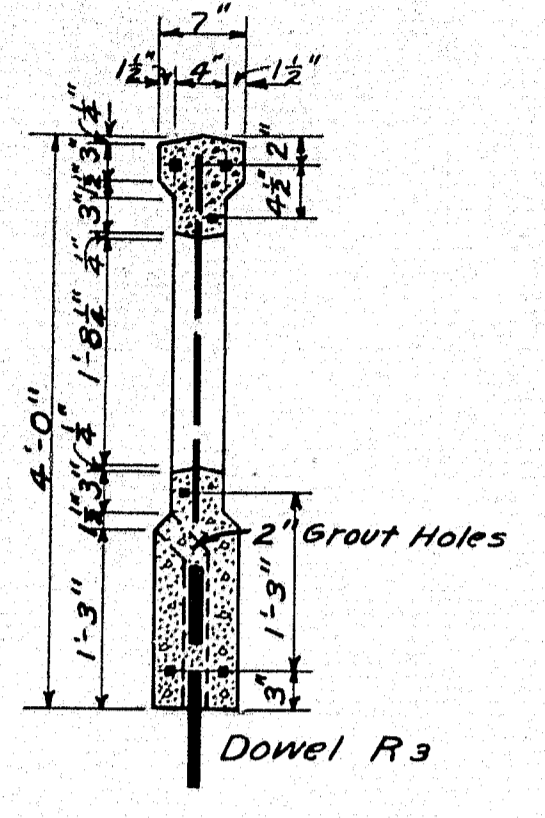


ELEVATION OF RAILING  
8 SECTIONS WANTED

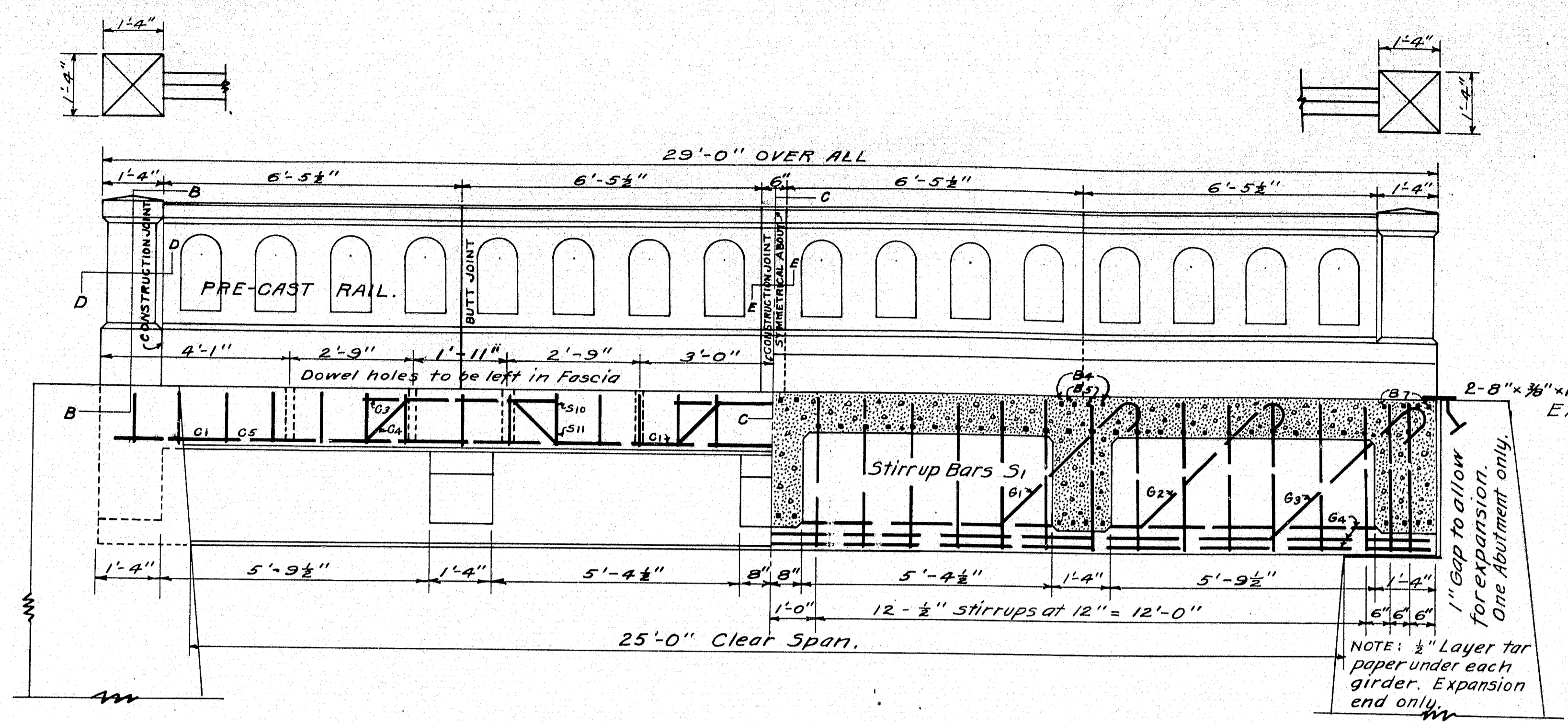


SECTION G-G

Bars R<sub>2</sub> project 2 1/2" from end of section, one end only.



SECTION F-F

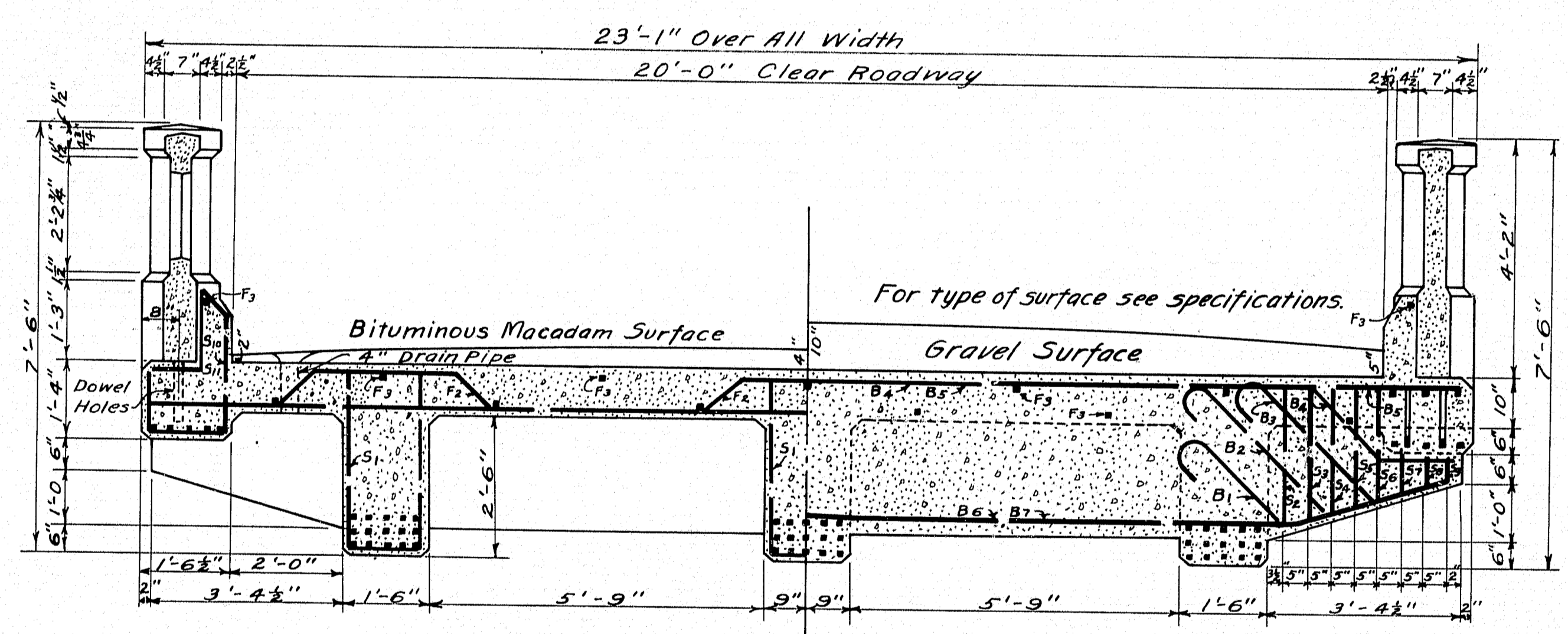
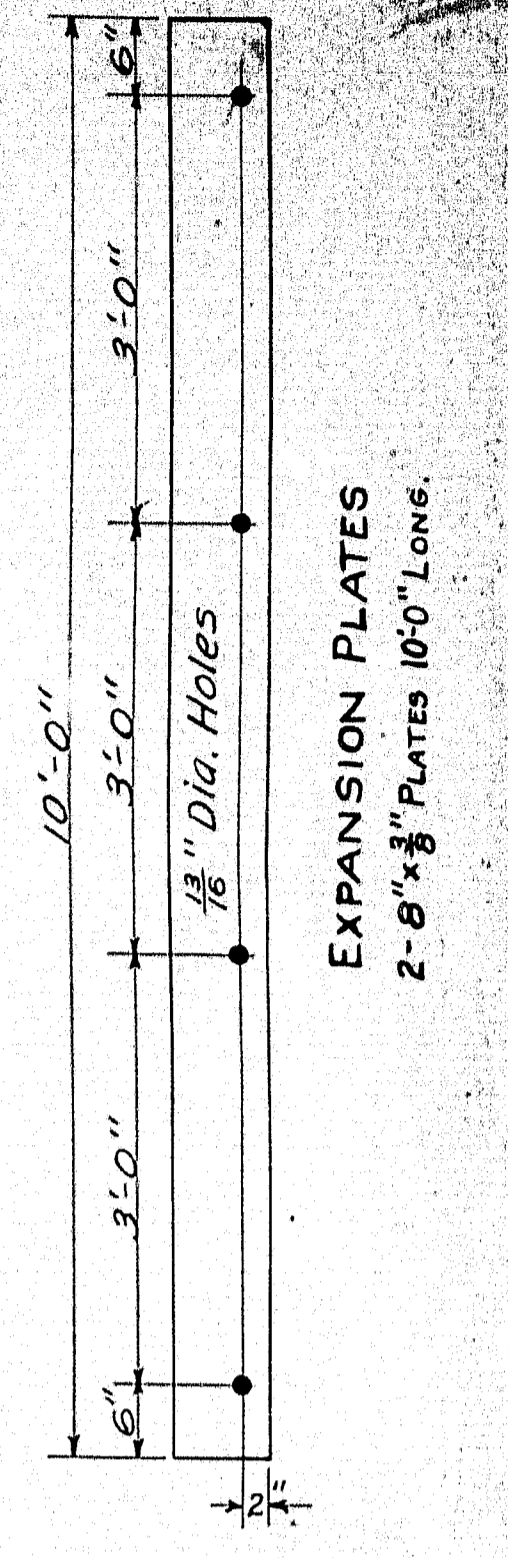


HALF SIDE ELEVATION

HALF LONGITUDINAL SECTION

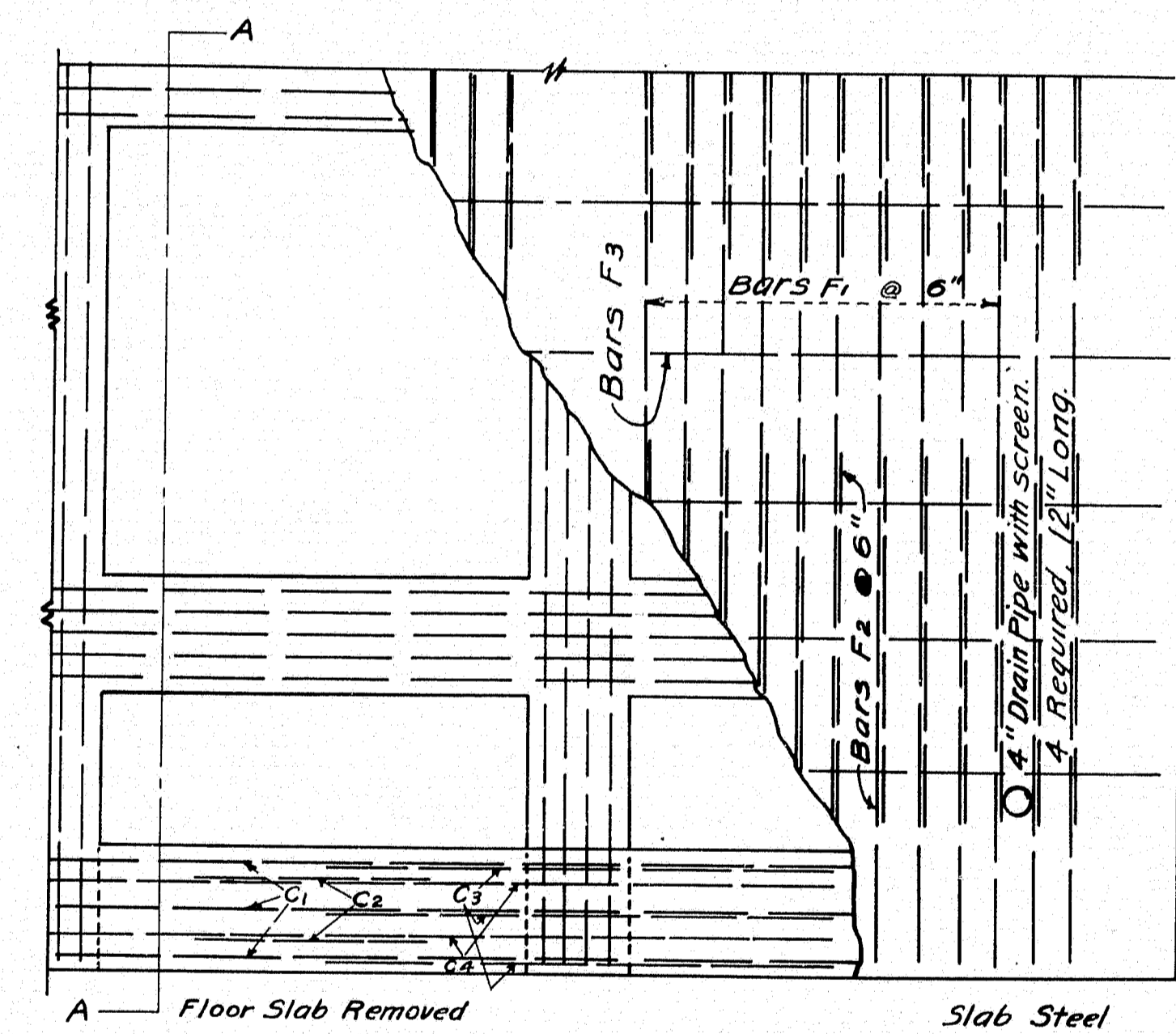
2'-8" x 3/8" x 10'-0" Expansion Plates  
Expansion End Only

NOTE: 1/2" Layer tar paper under each girder. Expansion end only.

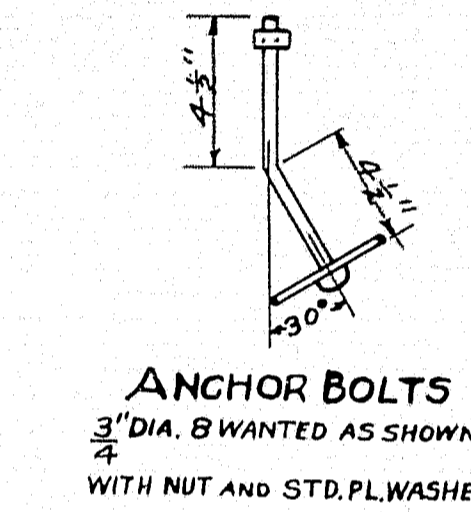


HALF SECTION A-A

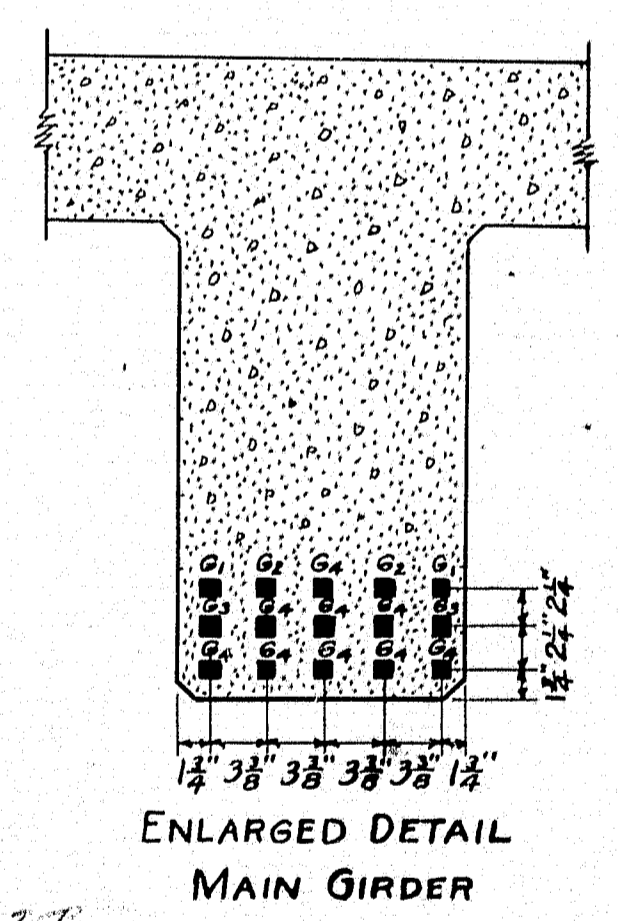
HALF SECTION THRU CROSS-BEAM



ONE QUARTER FLOOR PLAN

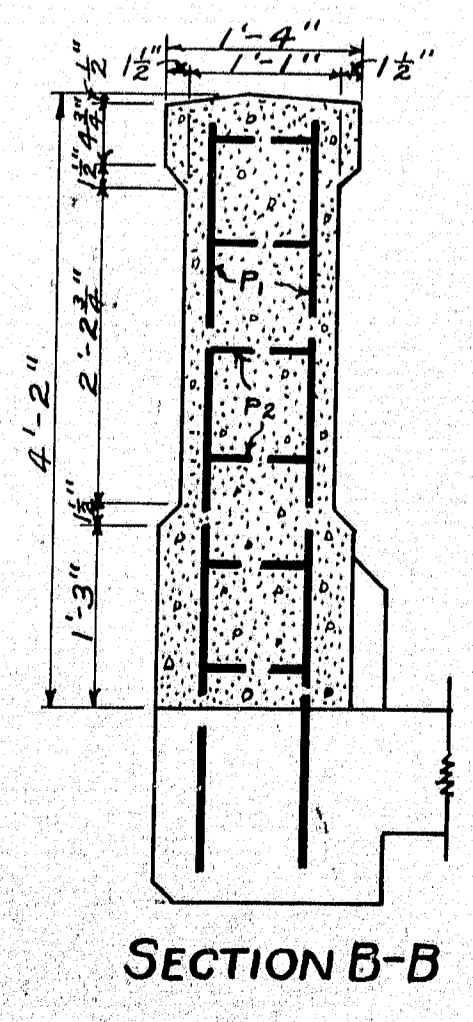


ANCHOR BOLTS  
3" DIA. B WANTED AS SHOWN  
WITH NUT AND STD. PL. WASHER

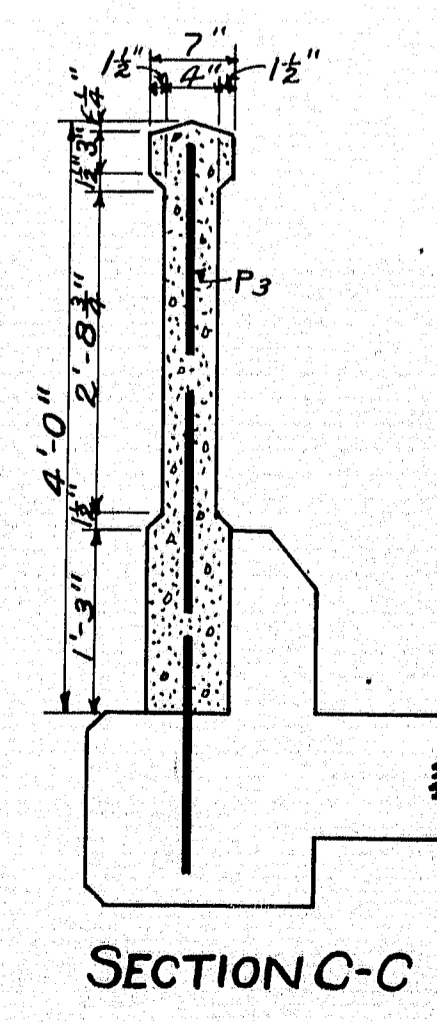


ENLARGED DETAIL  
MAIN GIRDER

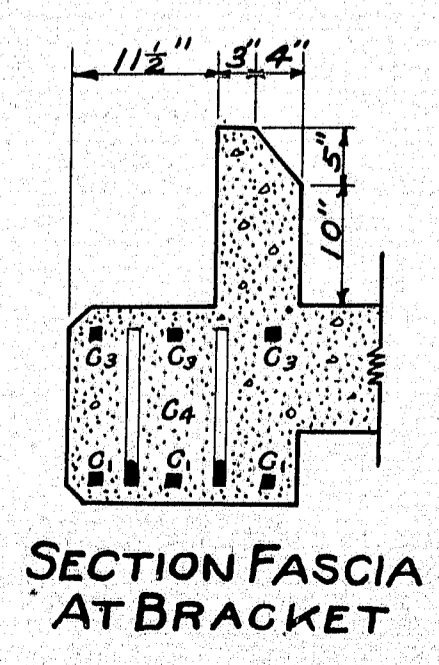
MARK	SIZE	NO. REQ.	A	LOCATION
F1	3/8"	46	22'-10"	SLAB
F3	1/2"	13	28'-10"	"
G4	3/4"	27	28'-8"	GIRDERS
B5	1"	6	22'-9"	CROSS-BEAM
B7	1"	22	16'-0"	"
C1	3/4"	6	28'-8"	FASCIA
C2	3/4"	8	3'-0"	"
C3	3/4"	18	4'-6"	"
C5	3/4"	8	5'-6"	"
P1	1"	16	5'-2"	END POSTS
P3	1"	2	5'-0"	INT. "
R1	1/2"	40	3'-10"	RAILING
R2	1/2"	48	6'-7"	"
R3	1/2"	16	2'-0"	"



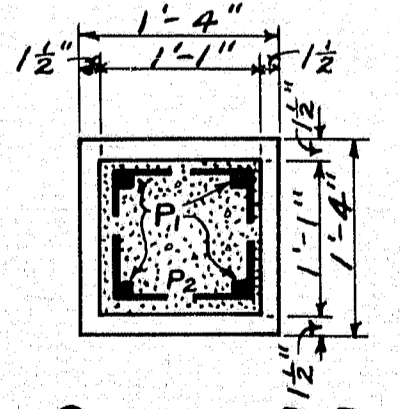
SECTION B-B



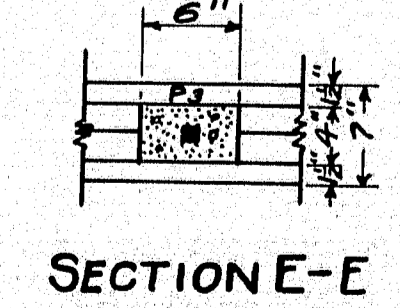
SECTION C-C



SECTION FASCIA  
AT BRACKET



SECTION D-D



SECTION E-E

NOTE: BENDS 6" RADIUS

MARK	SIZE	NO. REQ.	A	B	C	D	TOTAL LENGTH	LOCATION
G1	3/8"	6	11'-0"	2'-9"	3'-7 1/2"	2'-4 1/2"	20'-10"	MAIN GIRDERS
G2	3/8"	6	16'-6"	2'-9"	3'-7 1/2"	2'-4 1/2"	26'-4"	"
G3	3/8"	6	22'-0"	2'-11 1/2"	3'-11"	2'-7 1/2"	32'-5"	"

MARK	SIZE	NO. REQ.	A	B	C	D	TOTAL LENGTH	LOCATION
F2	3/8"	144	2'-6"	0'-10 1/2"	6"	7 1/2"	5'-3"	FLOOR SLAB
C4	3/4"	12	2'-4"	1'-5 1/2"	1'-0"	7'-2 1/2"	23'-5 1/2"	FASCIA
B4	1"	6	17'-2"	1'-10 1/2"	1'-3"	1'-4"	23'-5 1/2"	BRACKETS

MARK	SIZE	NO. REQ.	A	B	C	TOTAL LENGTH	LOCATION
B6	1"	6	16'-7"	2'-11"	3'-2 1/2"	23'-0"	BRACKETS & CROSS-BEAM

MARK	SIZE	NO. REQ.	A	B	C	TOTAL LENGTH	LOCATION
S1	3/8"	90	3'-2"	1'-4"	0'-6"	B'-B"	MAIN GIRDERS

MARK	SIZE	NO. REQ.	A	B	TOTAL LENGTH	LOCATION
S2	3/8"	6	2'-6 1/2"	1'-2"	8'-7"	BRACKETS
S3	"	6	2'-5"	"	8'-4"	"
S4	"	6	2'-3 1/2"	"	8'-1"	"
S5	"	6	2'-2"	"	7'-10"	"
S6	"	6	2'-0 1/2"	"	7'-7"	"
S7	"	6	0'-7 1/2"	"	4'-9"	"
S8	"	6	0'-6"	"	4'-6"	"
S9	"	6	0'-4 1/2"	"	4'-3"	"

NOTE: BENDS 6" RADIUS

MARK	SIZE	NO. REQ.	A	B	C	D	TOTAL LENGTH	LOCATION
B1	1"	6	3'-0 1/2"	1'-10 1/2"	1'-1 1/2"	1'-6"	6'-8 1/2"	BRACKETS
B2	"	12	0'-10 1/2"	3'-2"	1'-9 1/2"	2'-7 1/2"	5'-3 1/2"	"
B3	"	12	1'-3 1/2"	2'-9"	1'-7 1/2"	2'-3 1/2"	5'-4 1/2"	"

MARK	SIZE	NO. REQ.	A	B	C	D	E	F	TOTAL LENGTH	LOCATION
S10	3/8"	58	1'-11"	1'-0"	1'-0"	6"	5"	7"	5'-4"	CURB

MARK	SIZE	NO. REQ.	A	B	TOTAL LENGTH	LOCATION
S11	1/2"	58	1'-3"	11"	2'-2"	CURB

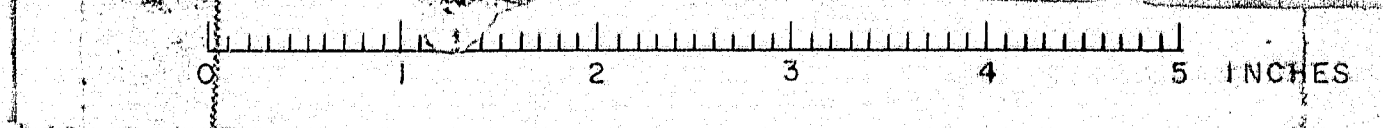
PERRY - Sipps Book

STATE OF MAINE  
HIGHWAY COMMISSION  
REINFORCED CONCRETE SUPERSTRUCTURE  
25'-0" SPAN

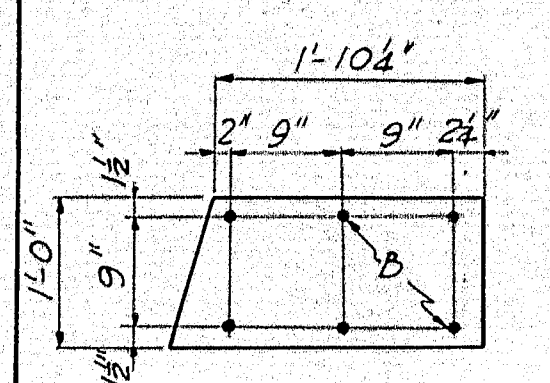
DRAWN 7-29-19.

M23

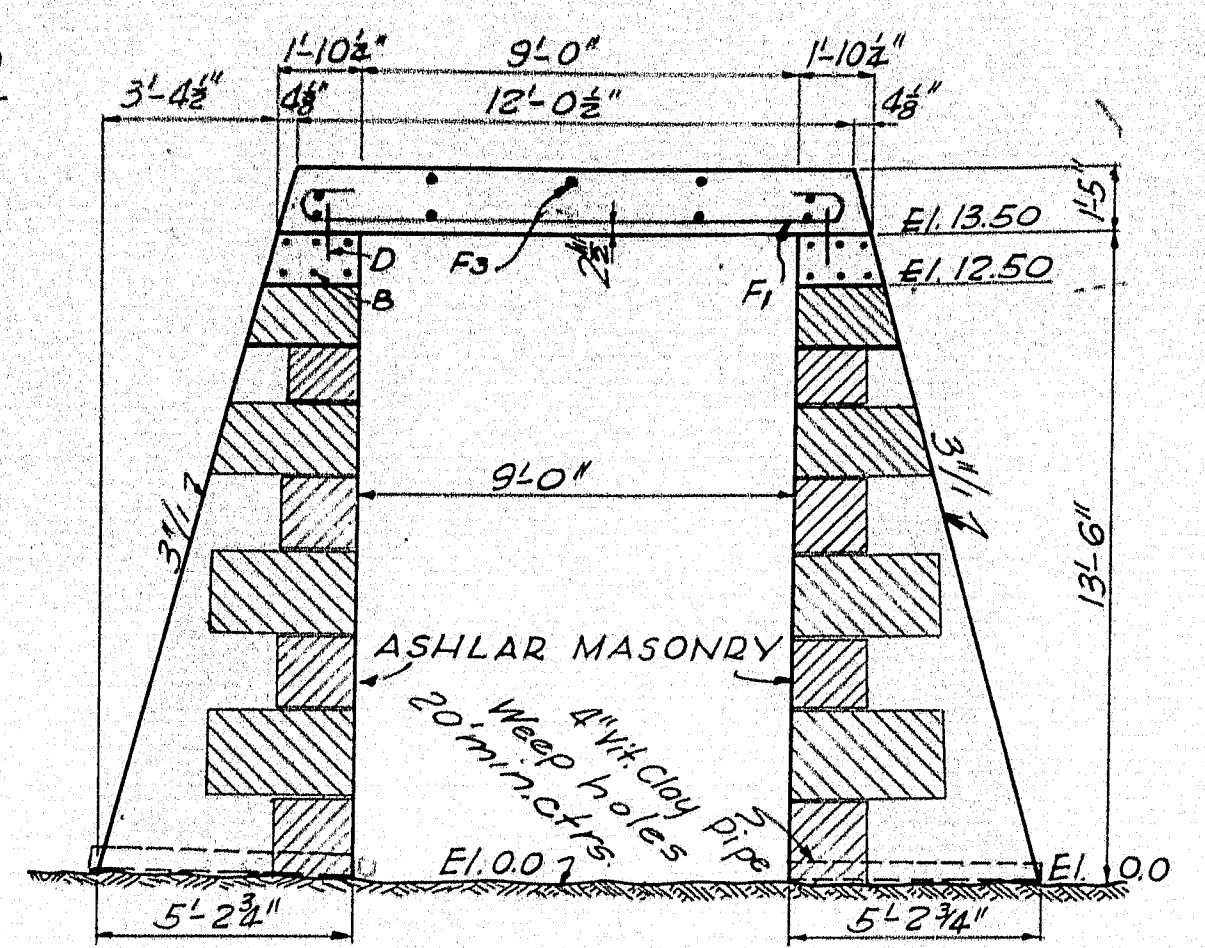
C.S.25



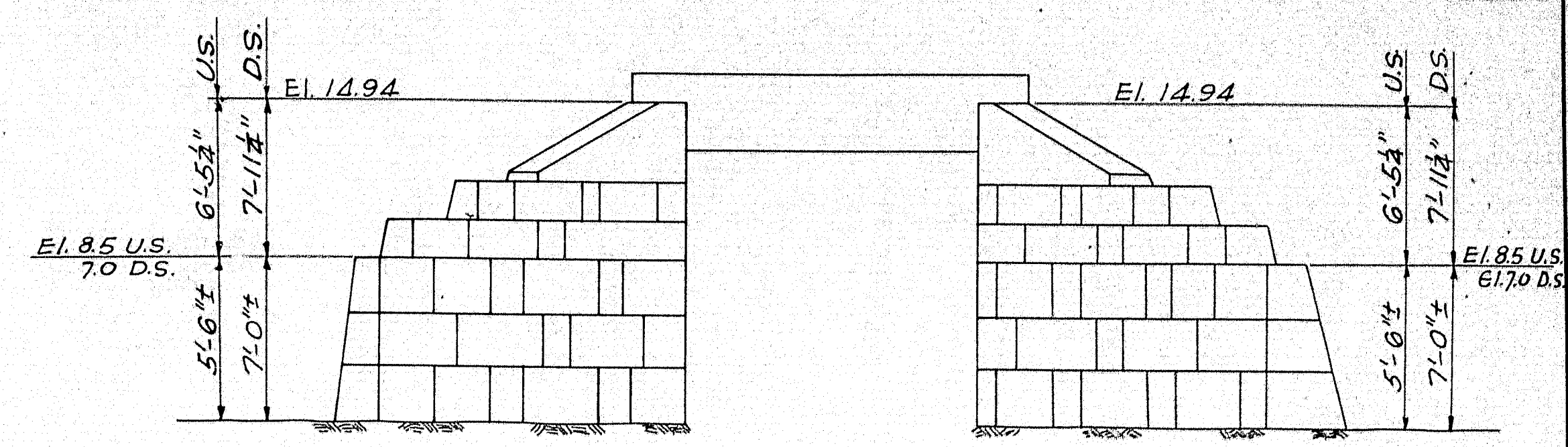
Wrap dowels D with roofing felt, one abutment only.



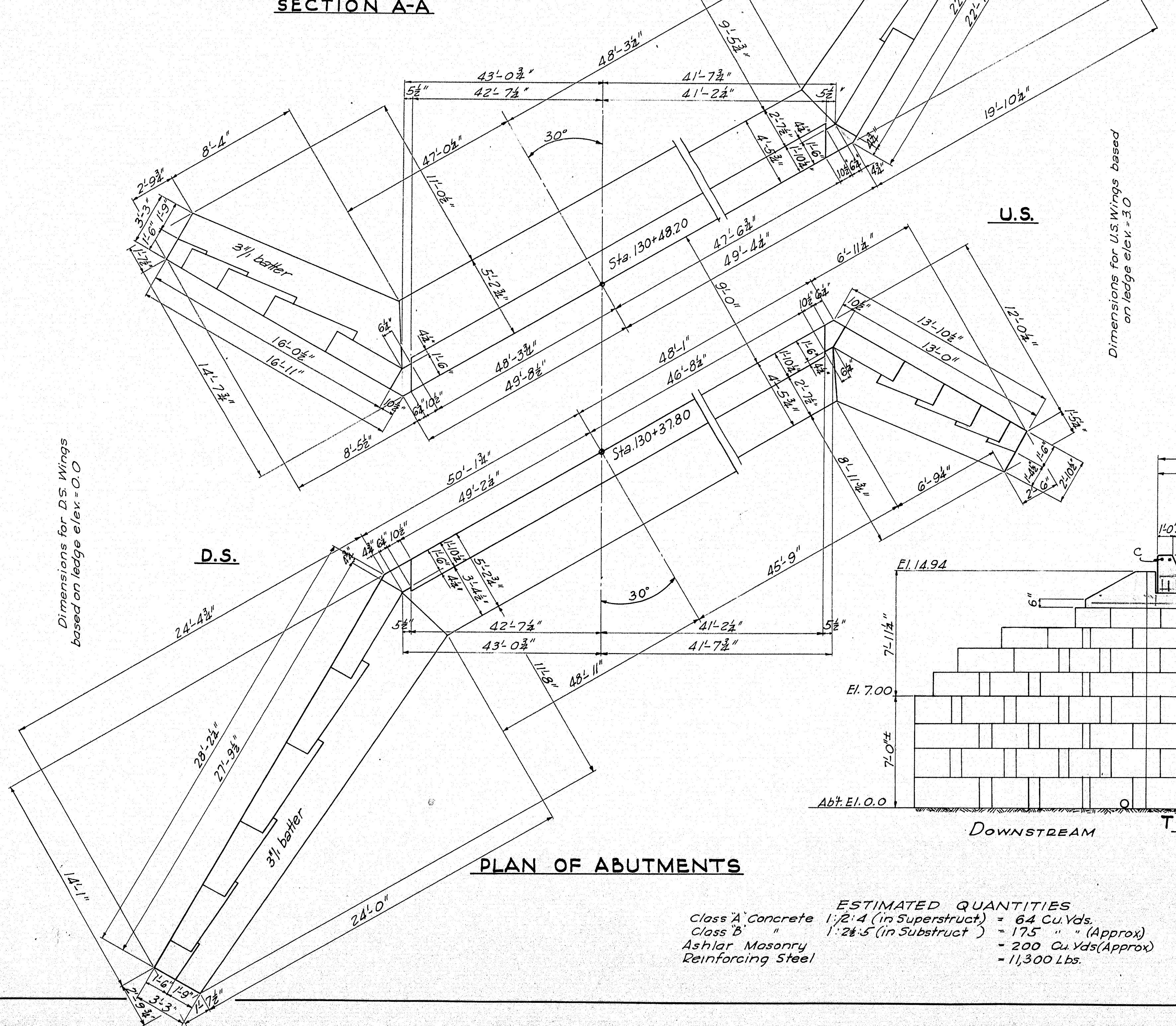
ABUTMENT CAP



SECTION A-A



END VIEW

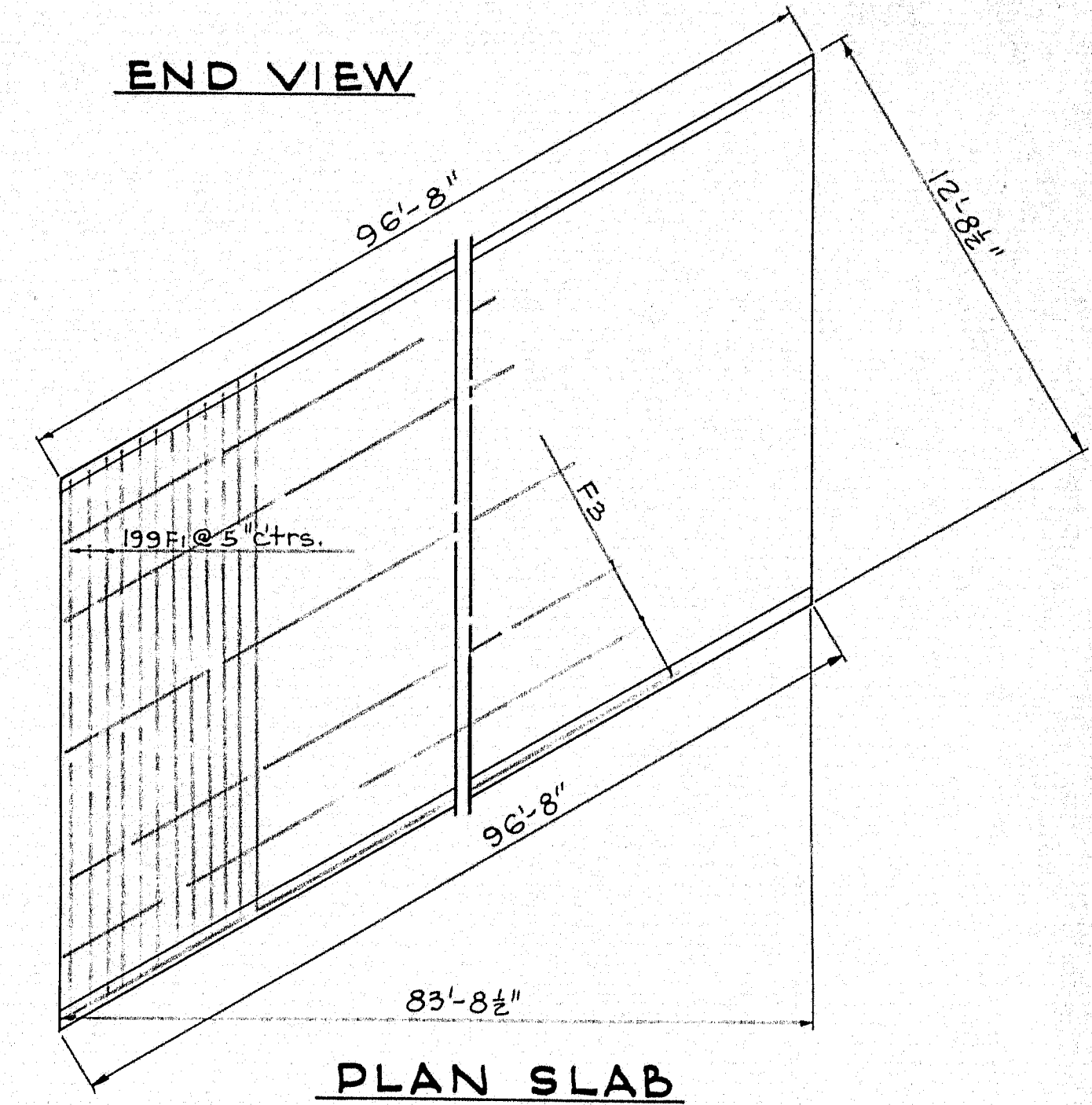


PLAN OF ABUTMENTS

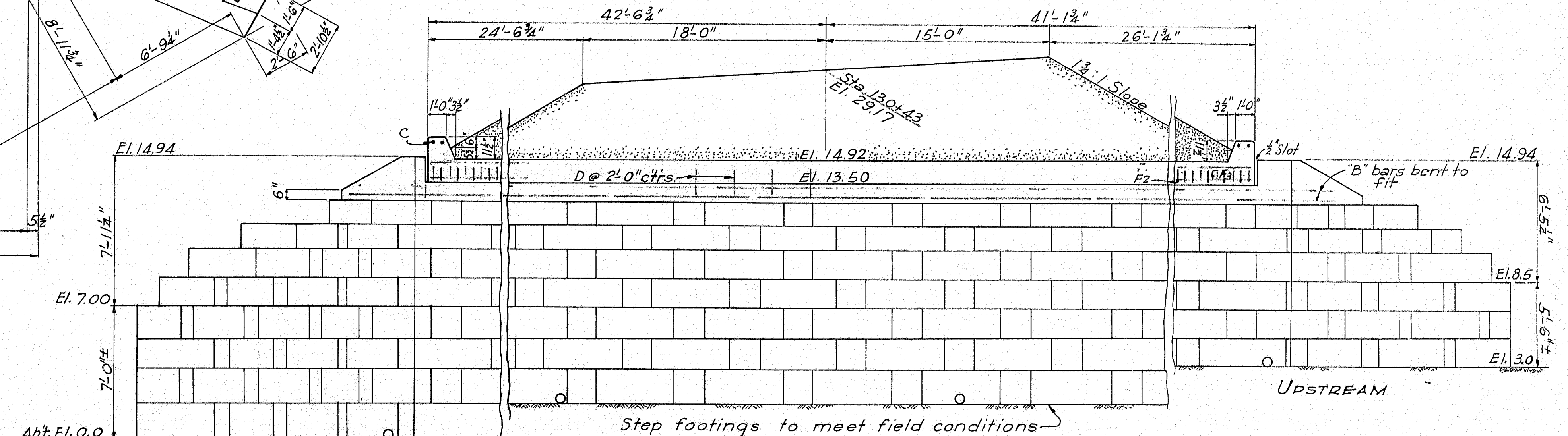
STEEL SCHEDULE

Mark	Size	Number	Length	Location
F <sub>1</sub>	1" φ	199	Req'd.	Length 15'-6" Slab
F <sub>3</sub>	1/2" φ	36	25'-4"	
C	1/2" φ	4	13'-3"	Curbs
D	3/4" φ	100	1'-6"	Abut to Slab
B	3/4" φ	60	24'-6"	Abut Cap

All steel to be plain round bars of structural grade. Dimensions are to  $\frac{1}{4}$ " of bars. Steel to be 2" clear of edge of concrete.



PLAN SLAB



TRANSVERSE SECTION SUPERSTRUCTURE

FRONT ELEVATION ABUTMENT NO. 2

ESTIMATED QUANTITIES  
 Class A Concrete 1:2:4 (in Superstruct) = 64 Cu. Yds.  
 Class B " " 1:2:5 (in Substruct) = 175 " (Approx)  
 Ashlar Masonry = 200 Cu. Yds (Approx)  
 Reinforcing Steel = 11,300 Lbs.

Cover the  $\frac{1}{4}$ " slot between the curb and wing walls on the back side with two layers of heavy roofing 10' wide. Coat surface of concrete and backside of each layer as applied with hot tar or asphalt. Area to be covered is to be recessed  $\frac{1}{4}$ " by nailing thin strips to the form, before concrete is placed. Chamfer all exposed edges of concrete  $\frac{1}{4}$ ".

ASHLAR MASONRY CULVERT  
 IN THE TOWN OF  
 PERRY - WASHINGTON COUNTY  
 Sta. 130+43  
 STATE HIGHWAY "N"  
 Scale  $\frac{1}{2}$ " = 1 foot

PERRY - SMILT BROOK BR.

Design - English V. Rogers  
 Revised M.C.L. '44

