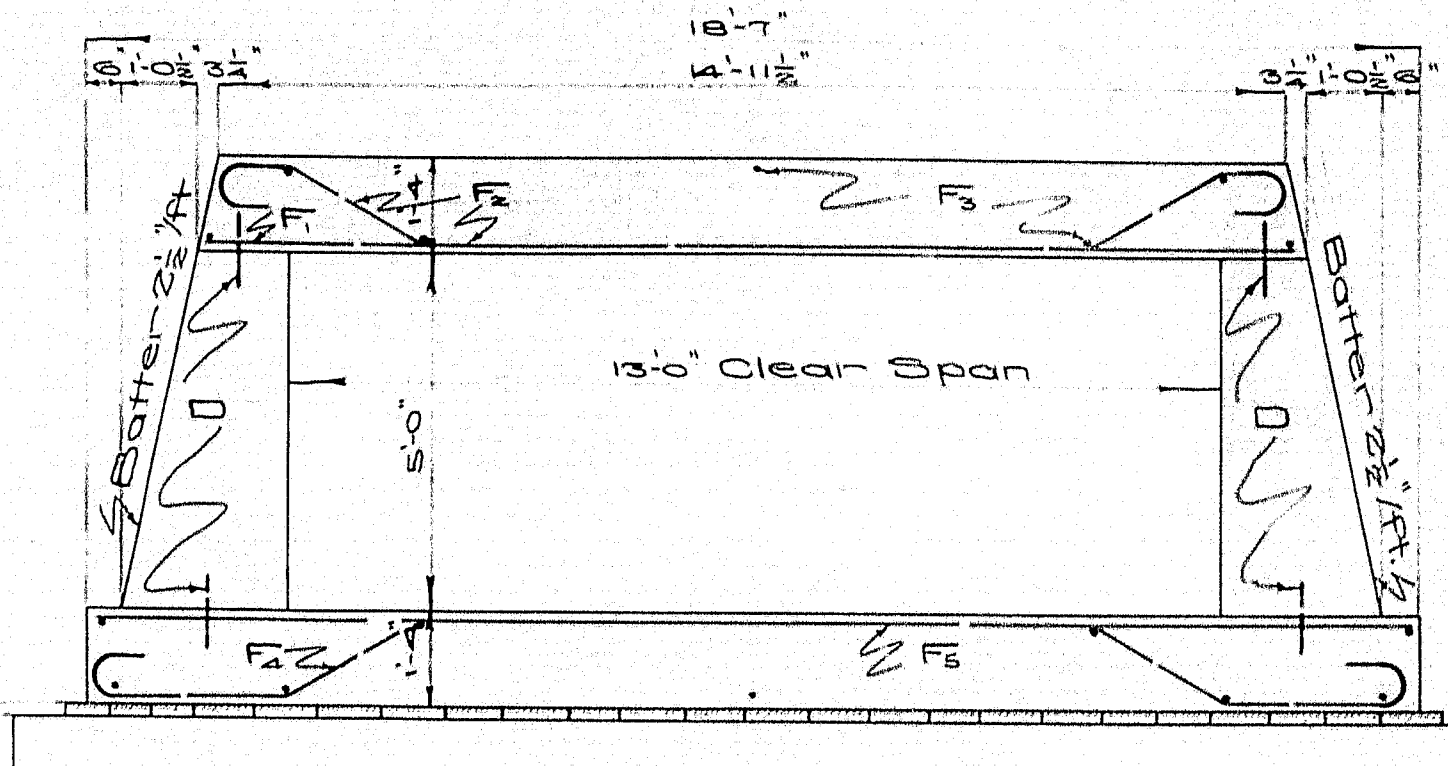
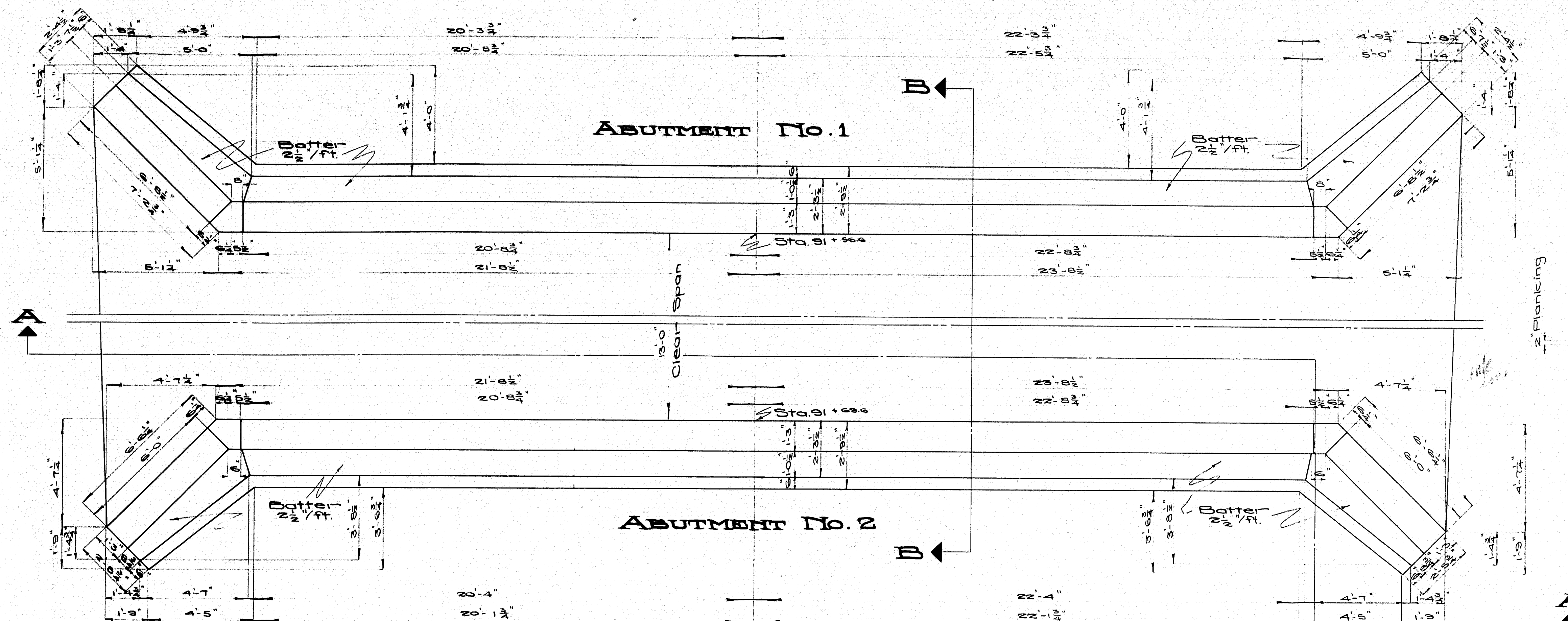
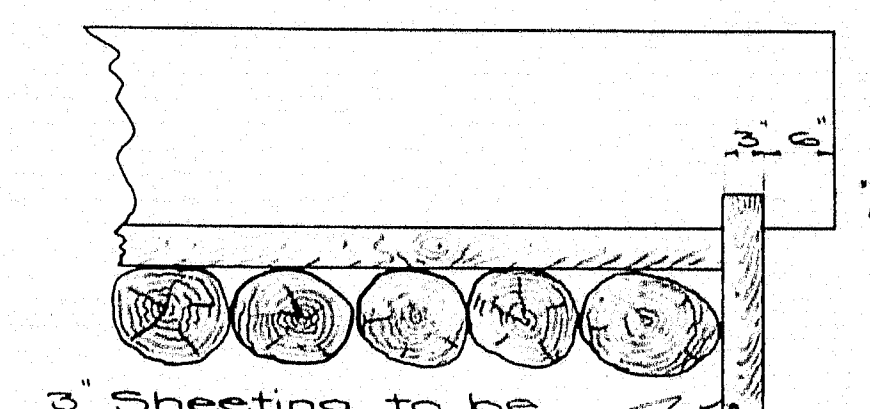


PART PLAN



SECTION B-B

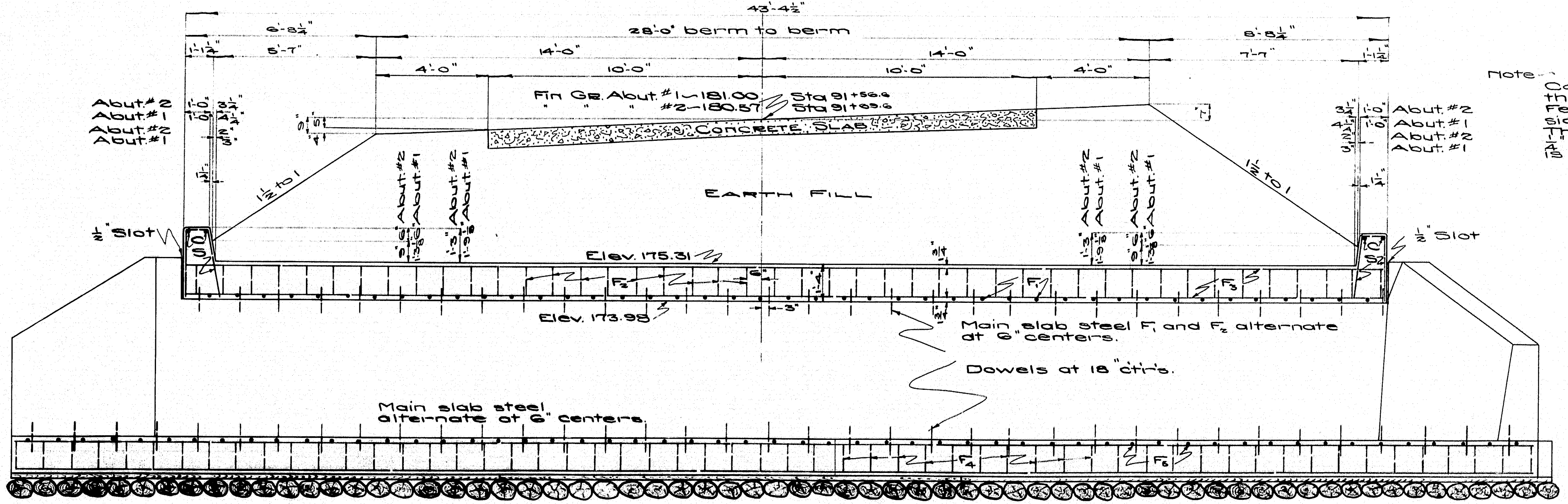
Note - Logs to be peeled, to have an 8" minimum diameter at the top and to project 12" beyond the floor slab.



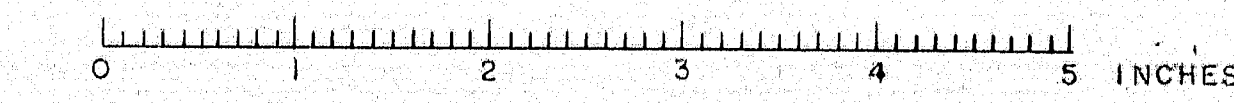
DETAIL OF SHEETING AT END OF SLAB

Note - Cover the 1/2" slots between substructure and curbs on the back side with two layers of heavy roofing felt. Felt to be 10" wide. Coat surface of concrete and back side of each layer as applied with hot tar or asphalt. The area to be covered by the felt is to be recessed by nailing thin strips to the forms before concrete placed.

Note - Highway B.M. #10 Elev. 177.78 nail in 12" apple trees at right of Sta. 90+00 for curve and grade data see Highway Plans. (140 B)



SECTION AND VIEW A-A



Bridge 2274
TOWNSHIP - 13-35

MAINE HIGHWAY COMMISSION
BRIDGE DIVISION

FARNHAM BRIDGE
OVER
FARNHAM BROOK
IN THE TOWN OF
PITTSFIELD
SOMERSET COUNTY

BRIDGE DETAILS

Sheet 1 of 2 Augusta, Me. May 1935

