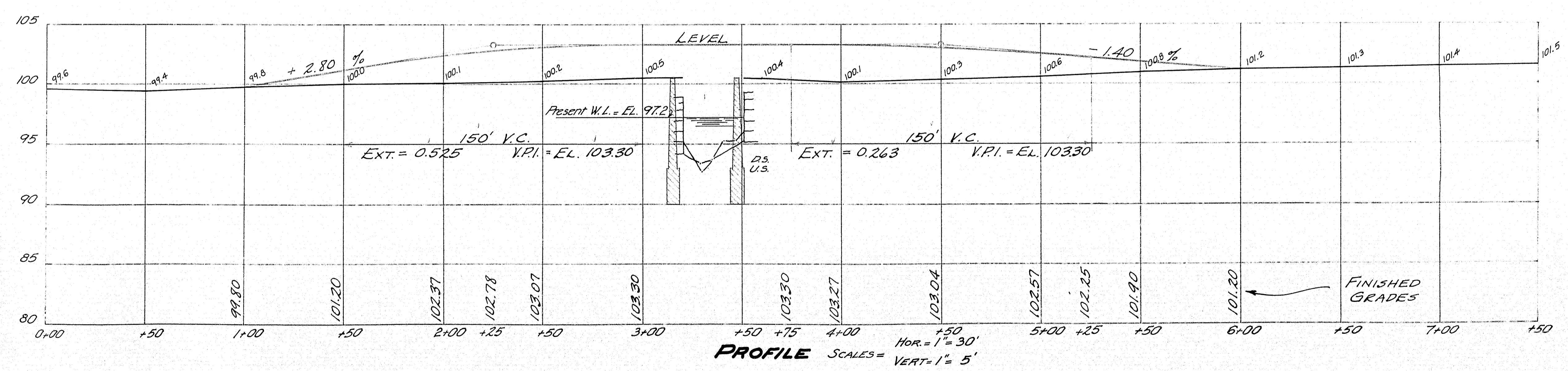
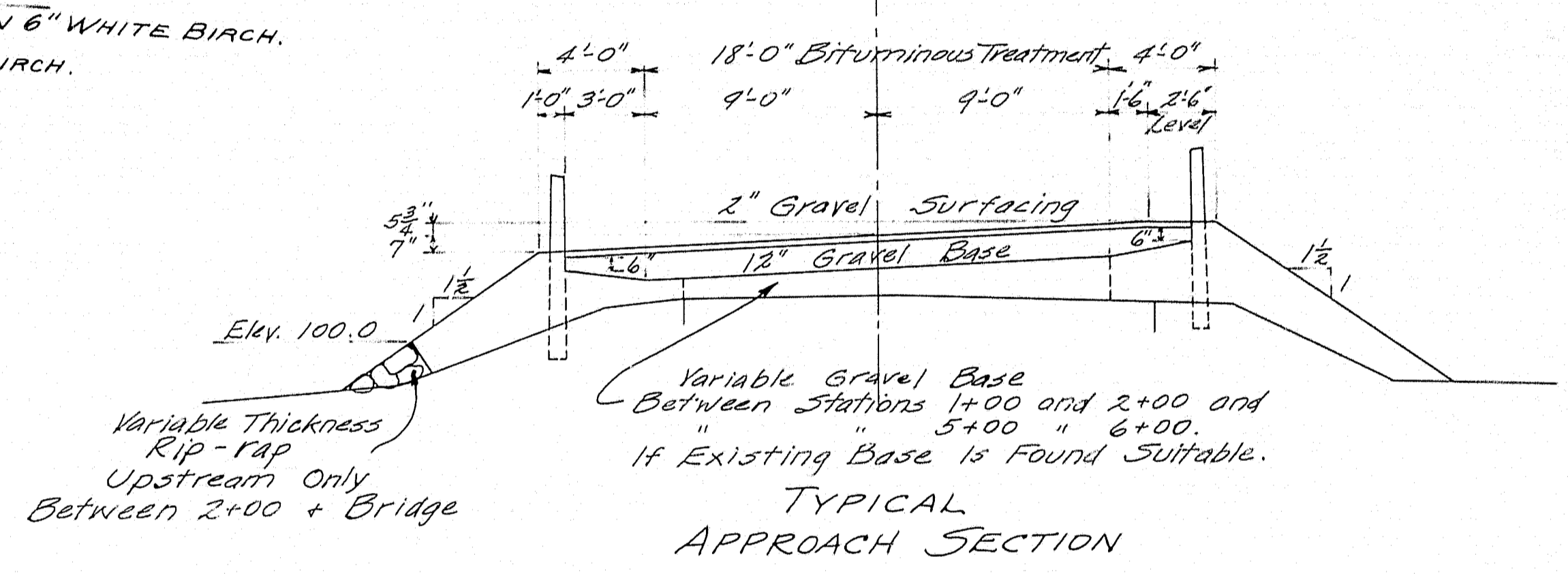
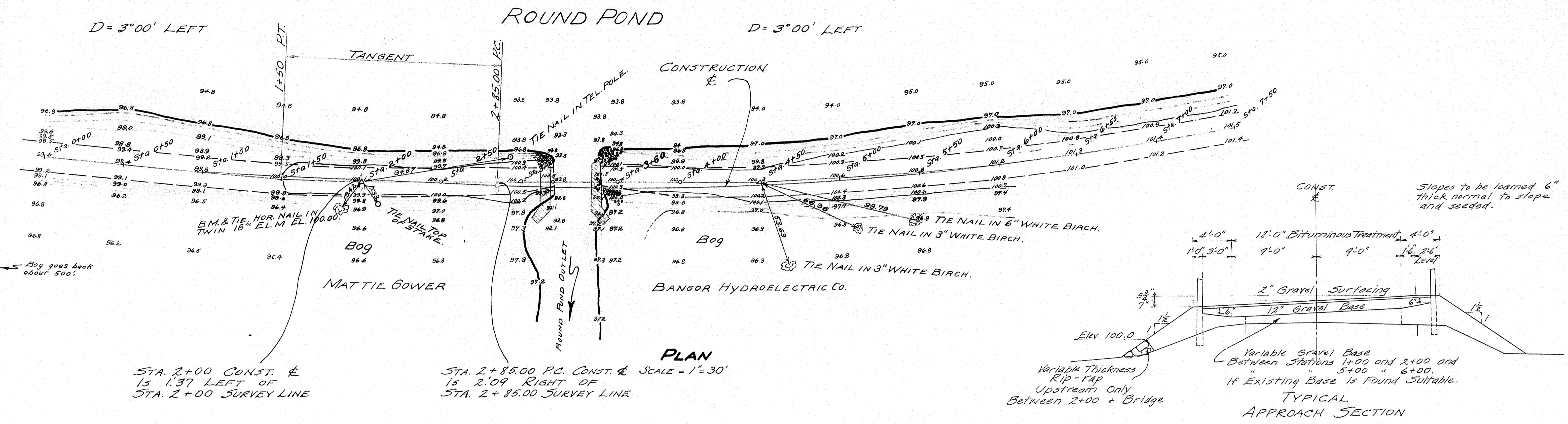


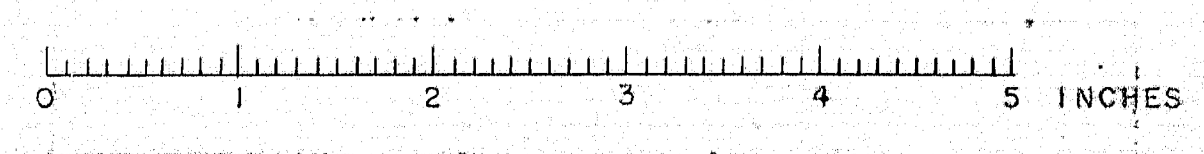
NOTE:  
 SUPERSTRUCTURE: Log stringers in fair condition. Transverse and longitudinal planking, fair condition.  
 SUBSTRUCTURE: Dry laid field stone abutments, poor condition. Three pile bents, fair condition.  
 STREAM: Almost dead water. Brook connects two ponds 1/2 mile apart. Low water about 1' below present level. High water reaches bottom of stringers.  
 FOUNDATION: Sounding taken 20' R of Sta. 4+50. Rod was driven 30' below water to fairly firm material. First 20' thru sandy silt. Remainder thru clay.  
 APPROACHES: Improved gravel. Good condition.



SURVEY BLANK TOWN - 15-10  
 PLAN H.H. BRIDGE 3787

STATE HIGHWAY COMMISSION  
 BRIDGE DIVISION  
**ROUND POND BRIDGE**  
 OVER  
**ROUND POND OUTLET**  
 IN THE TOWN OF  
**CHARLOTTE**  
**WASHINGTON COUNTY**  
 SURVEY  
 SHEET 1 OF 4 AUGUSTA, MAINE JAN. 1941

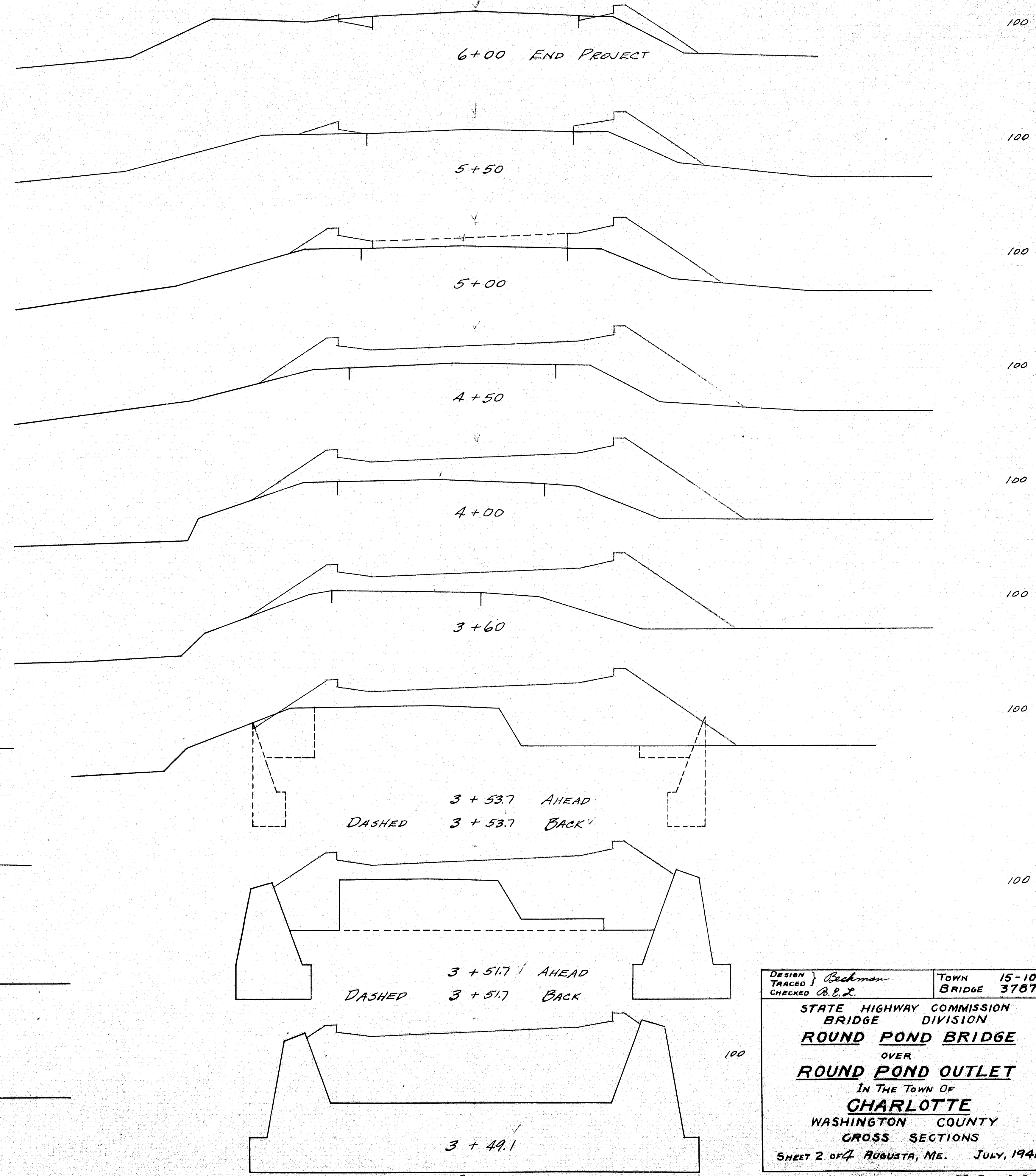
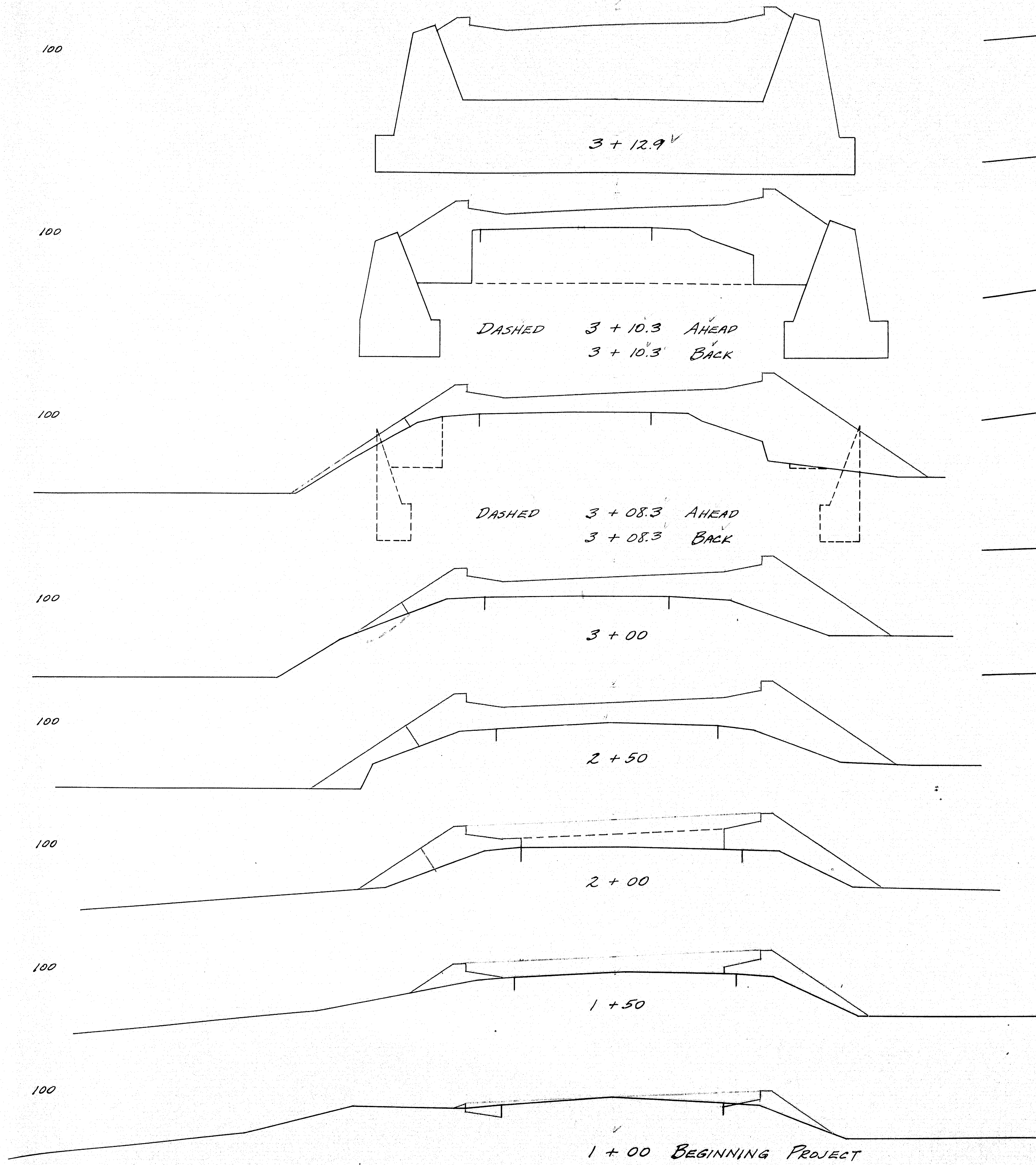
38-163



CONST.  $\frac{1}{2}$   
 3 + 47.6 END WEARING SURFACE  
 3 + 14.4 BEGINNING " "

CONST.  $\frac{1}{2}$

6+00 END PROJECT



CONST.  $\frac{1}{2}$

CONST.  $\frac{1}{2}$

DESIGN TRACED } Beckman	TOWN	15-10
CHECKED } B.E.L.	BRIDGE	3787
STATE HIGHWAY COMMISSION		
BRIDGE DIVISION		
ROUND POND BRIDGE		
OVER		
ROUND POND OUTLET		
IN THE TOWN OF		
CHARLOTTE		
WASHINGTON COUNTY		
CROSS SECTIONS		
SHEET 2 OF 4 AUGUSTA, ME. JULY, 1941		

38-164

