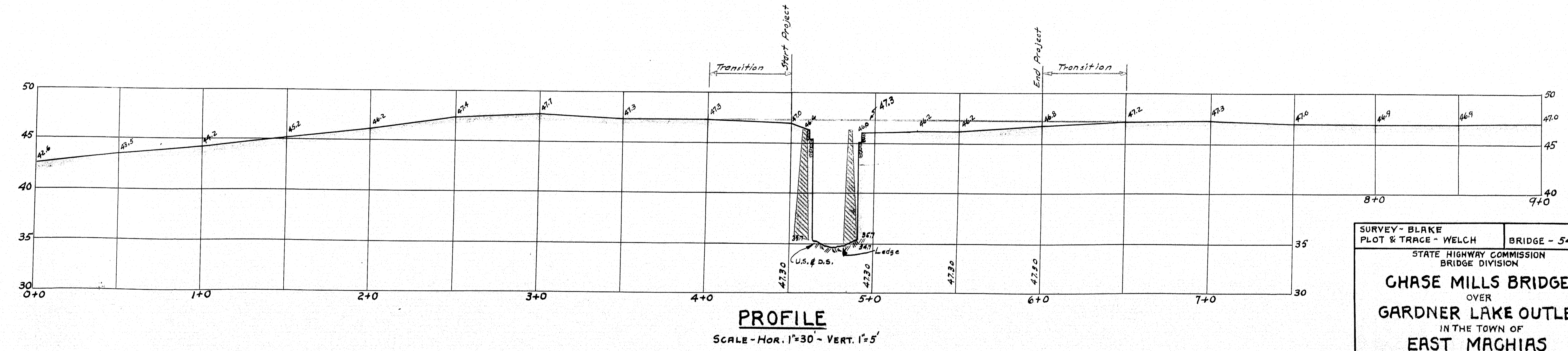
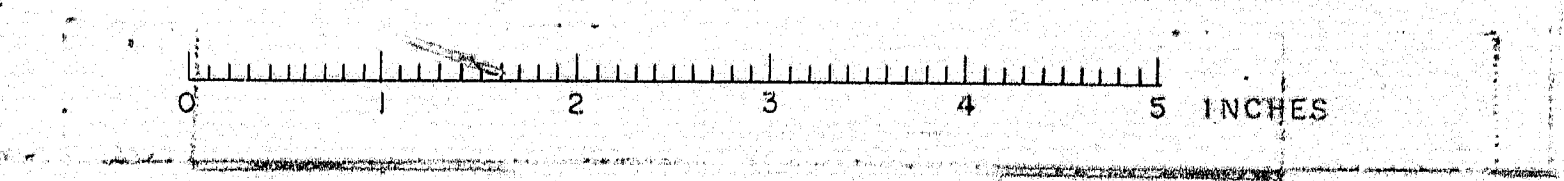


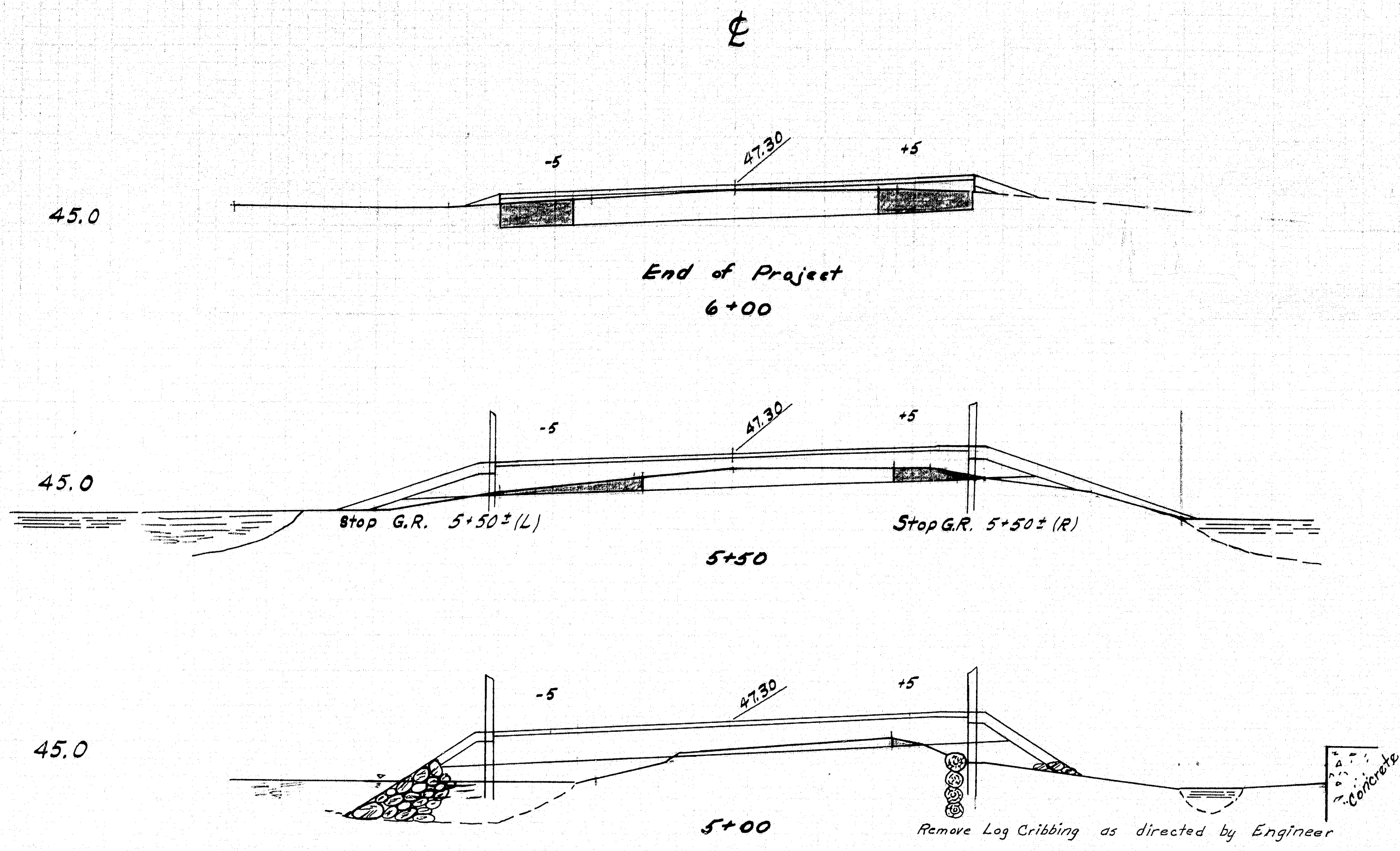
**NOTES**

- EXISTING SUPERSTRUCTURE:**  
Two inch longitudinal plank on 3 inch transverse plank on 6 large squared log stringers. King Post Truss. Poor condition.
- EXISTING SUBSTRUCTURE:**  
Abutments stone filled log cribs. Rotten wood, poor condition.
- STREAM:** In flowage of dam that controls Gardner Lake. High water present stage.
- FOUNDATION:** Stream bed all ledge.
- APPROACHES:** Improved surface treated gravel.

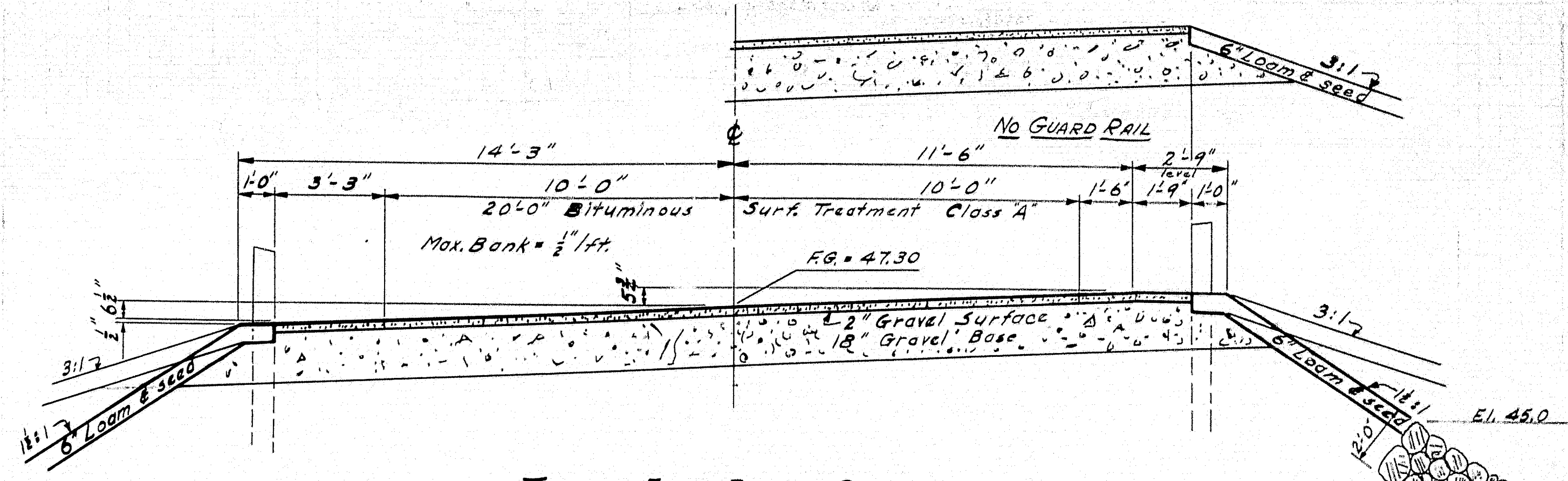
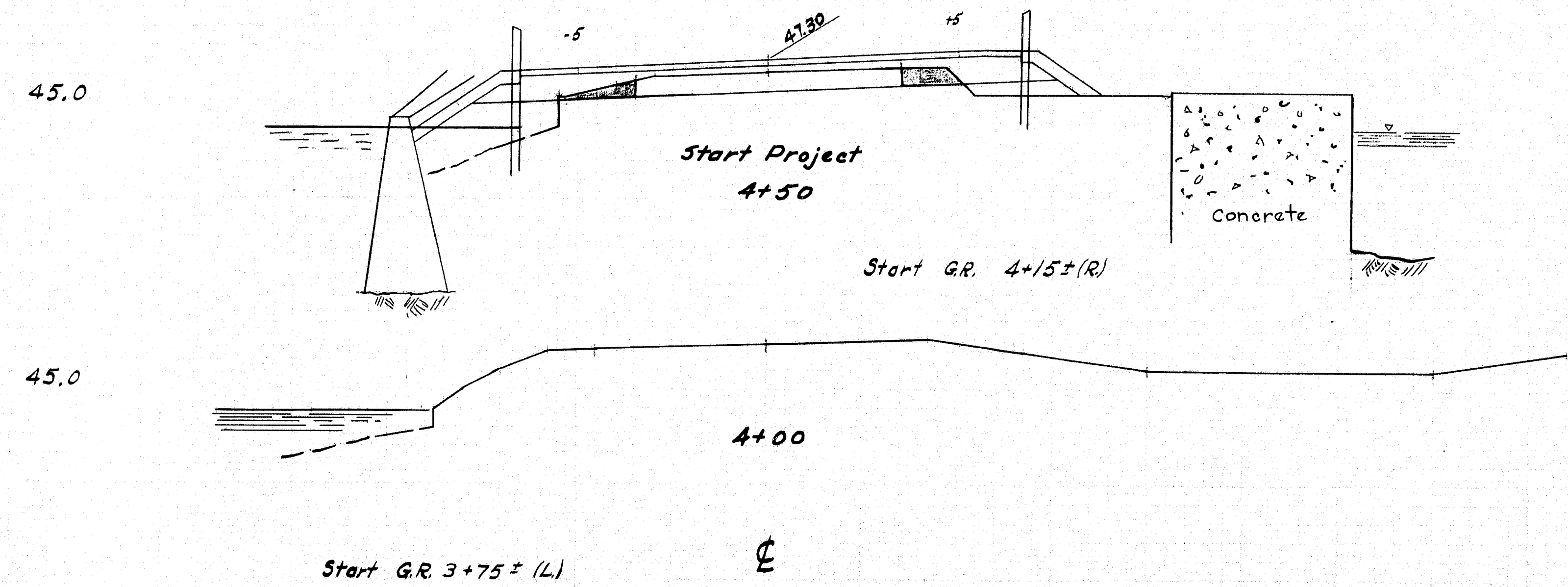


SURVEY - BLAKE  
 PLOT & TRACE - WELCH  
 STATE HIGHWAY COMMISSION  
 BRIDGE DIVISION  
**CHASE MILLS BRIDGE**  
 OVER  
**GARDNER LAKE OUTLET**  
 IN THE TOWN OF  
**EAST MAGUIAS**  
 WASHINGTON COUNTY  
 SURVEY  
 SHEET 1 OF 4 AUGUSTA, MAINE JAN. 1951





- BRIDGE -

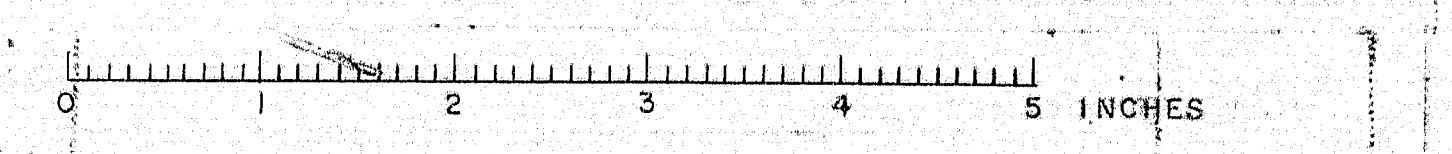


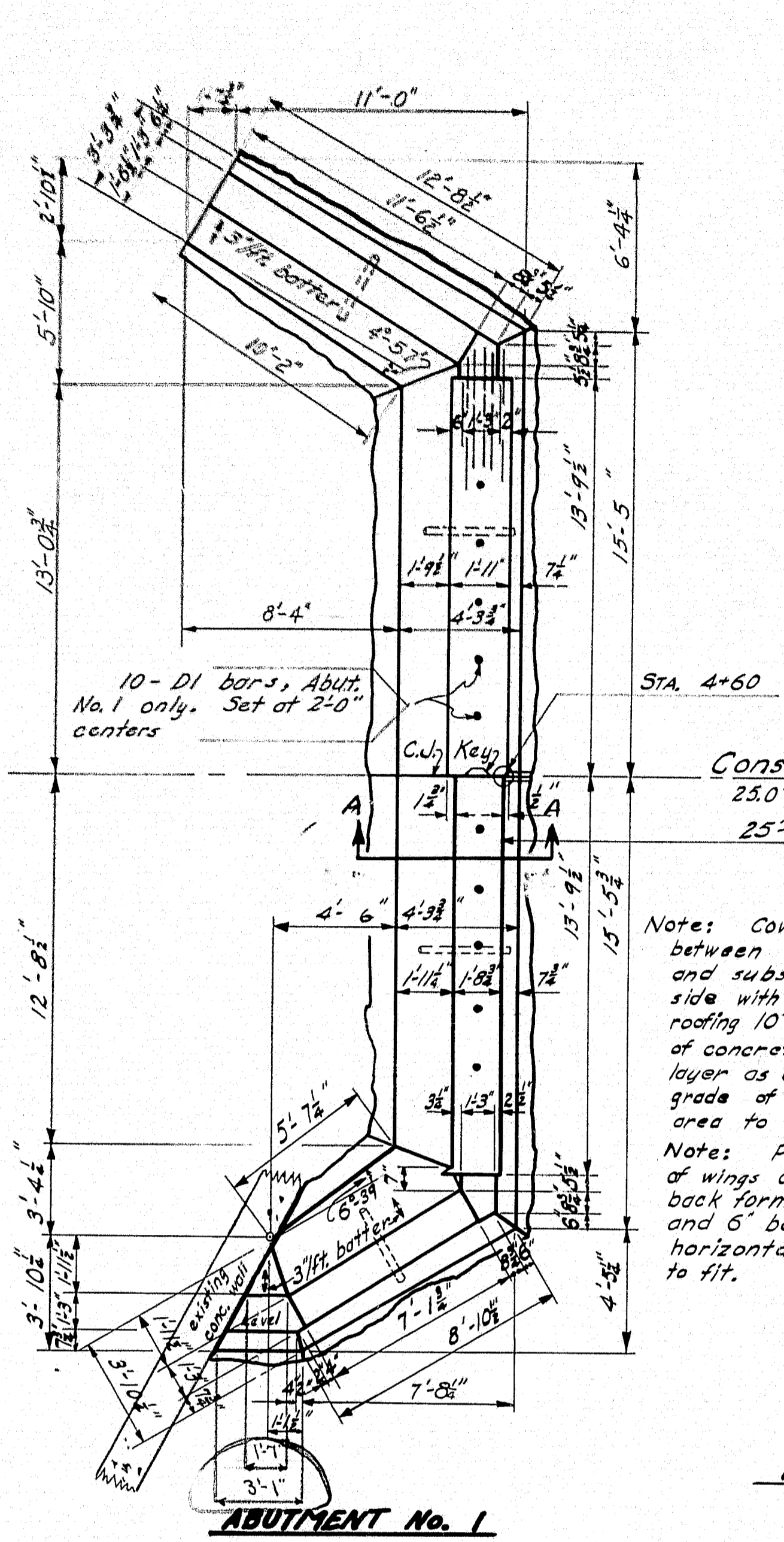
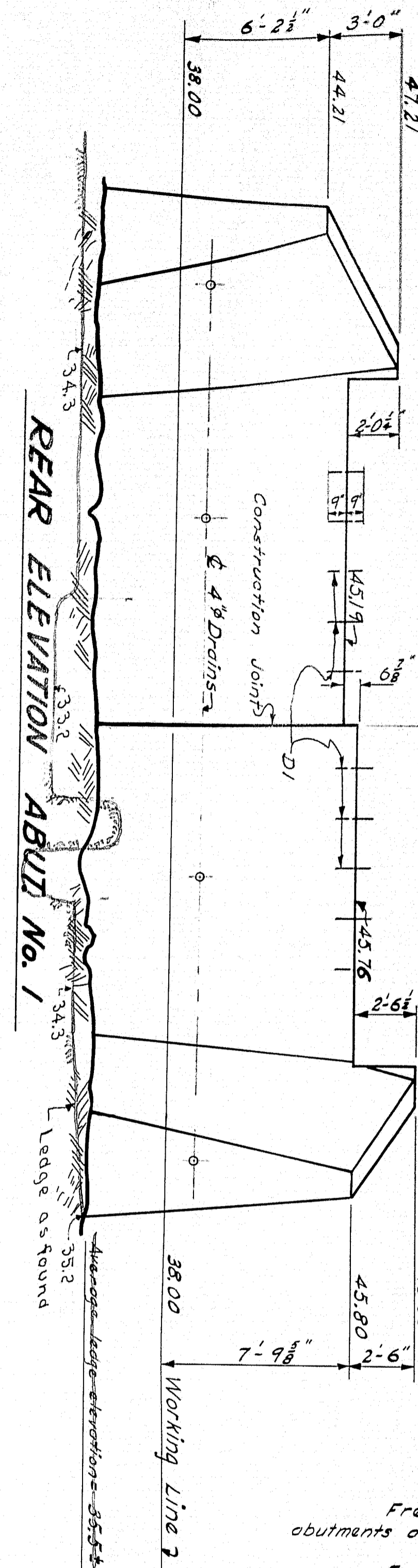
TYPICAL FULL BANK SECTION WITH GUARD RAIL

Note: Do not excavate for "Gravel Base" where existing material is suitable. All Fill to be "Gravel Borrow" except for the use of Excavated Material.

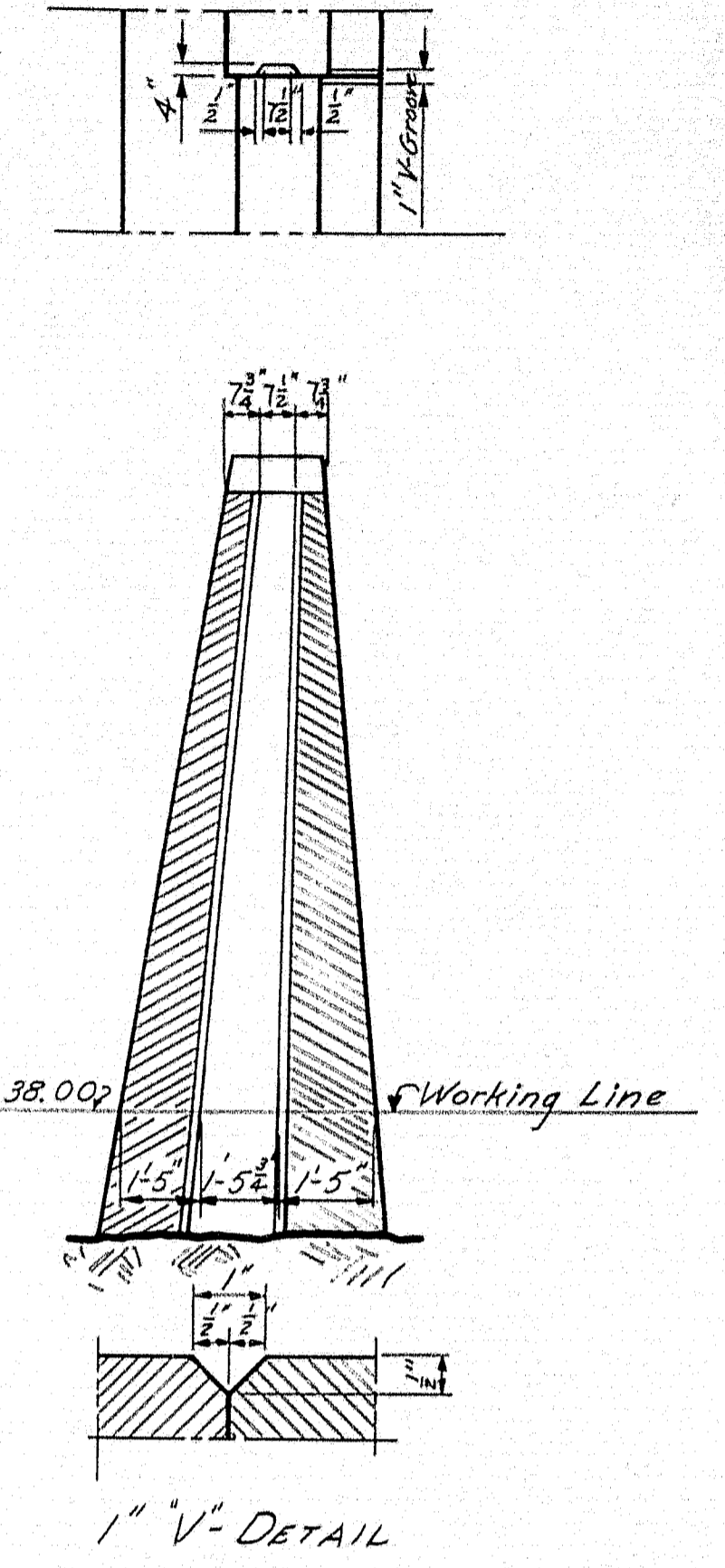
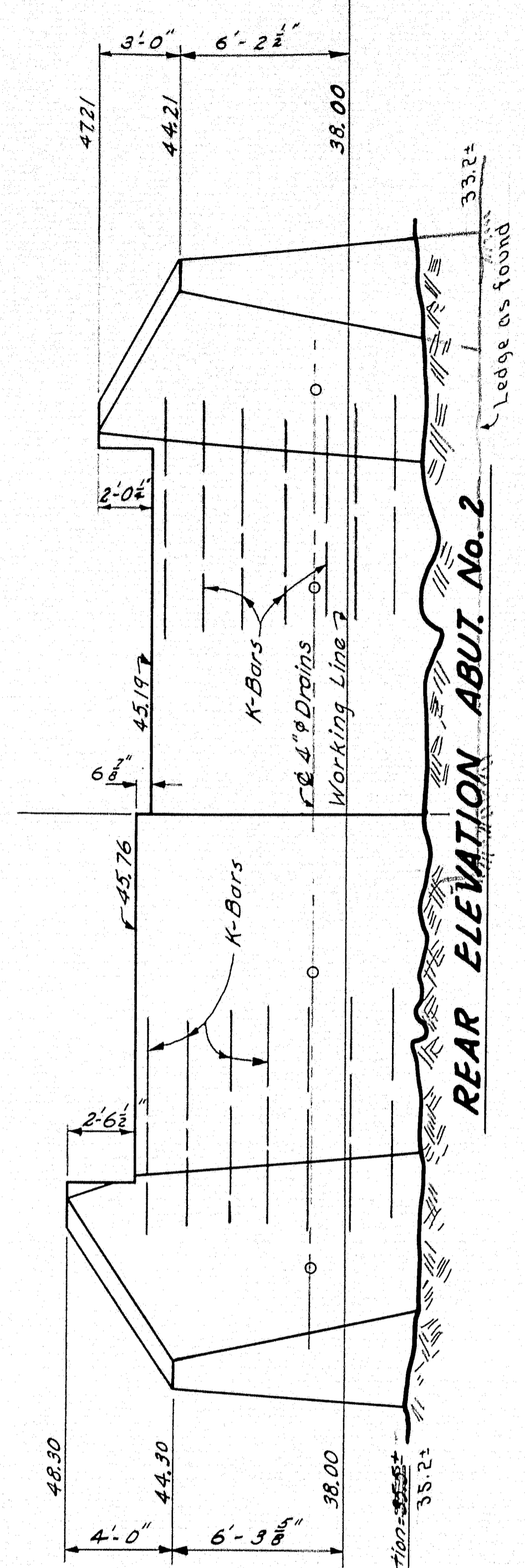
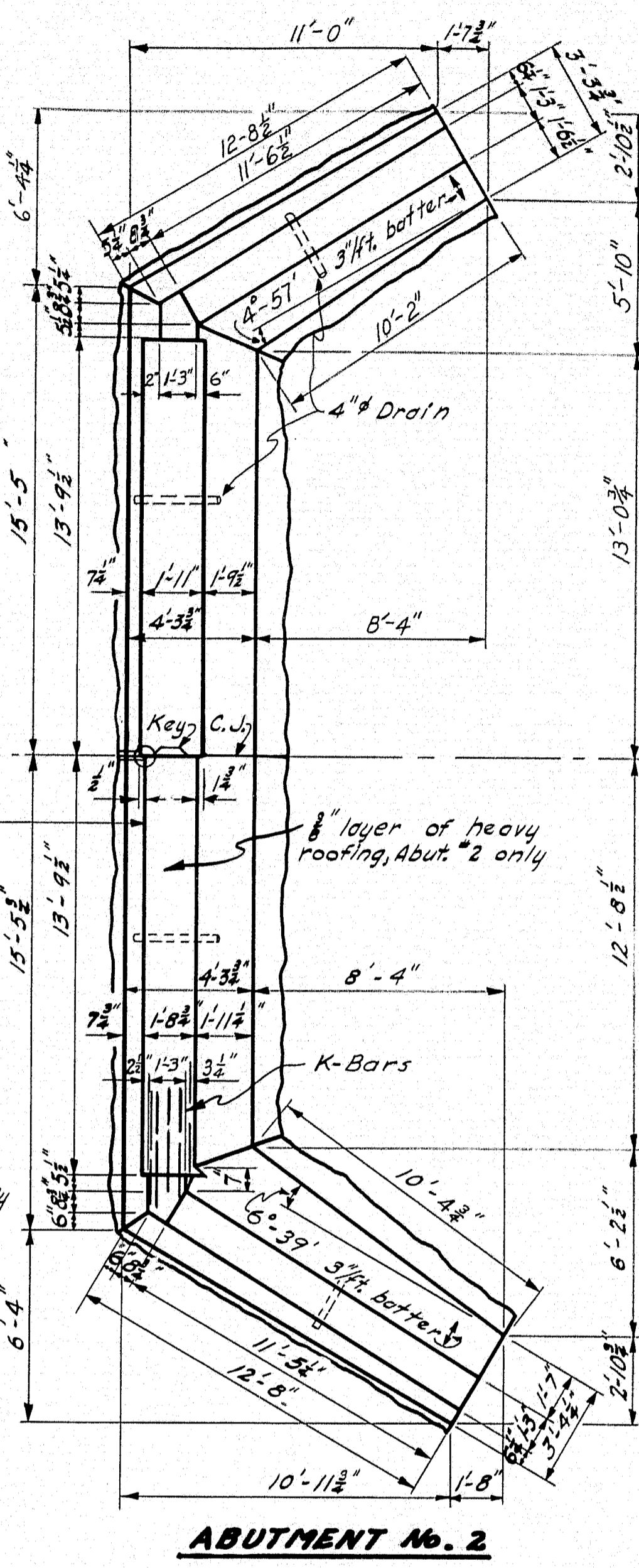
|                                       |                          |
|---------------------------------------|--------------------------|
| PLOT - MAZEIKO                        | BRIDGE 5465              |
| CHECK - A.B.P.                        | STATE HIGHWAY COMMISSION |
|                                       | BRIDGE DIVISION          |
| <b>CHASE MILLS BRIDGE</b>             |                          |
| OVER                                  |                          |
| <b>GARDNER LAKE OUTLET</b>            |                          |
| IN THE TOWN OF                        |                          |
| <b>EAST MACHIAS</b>                   |                          |
| <b>WASHINGTON COUNTY</b>              |                          |
| CROSS SECTIONS                        |                          |
| SHEET 2 OF 4 AUGUSTA, MAINE FEB. 1952 |                          |

54-11





FLOW

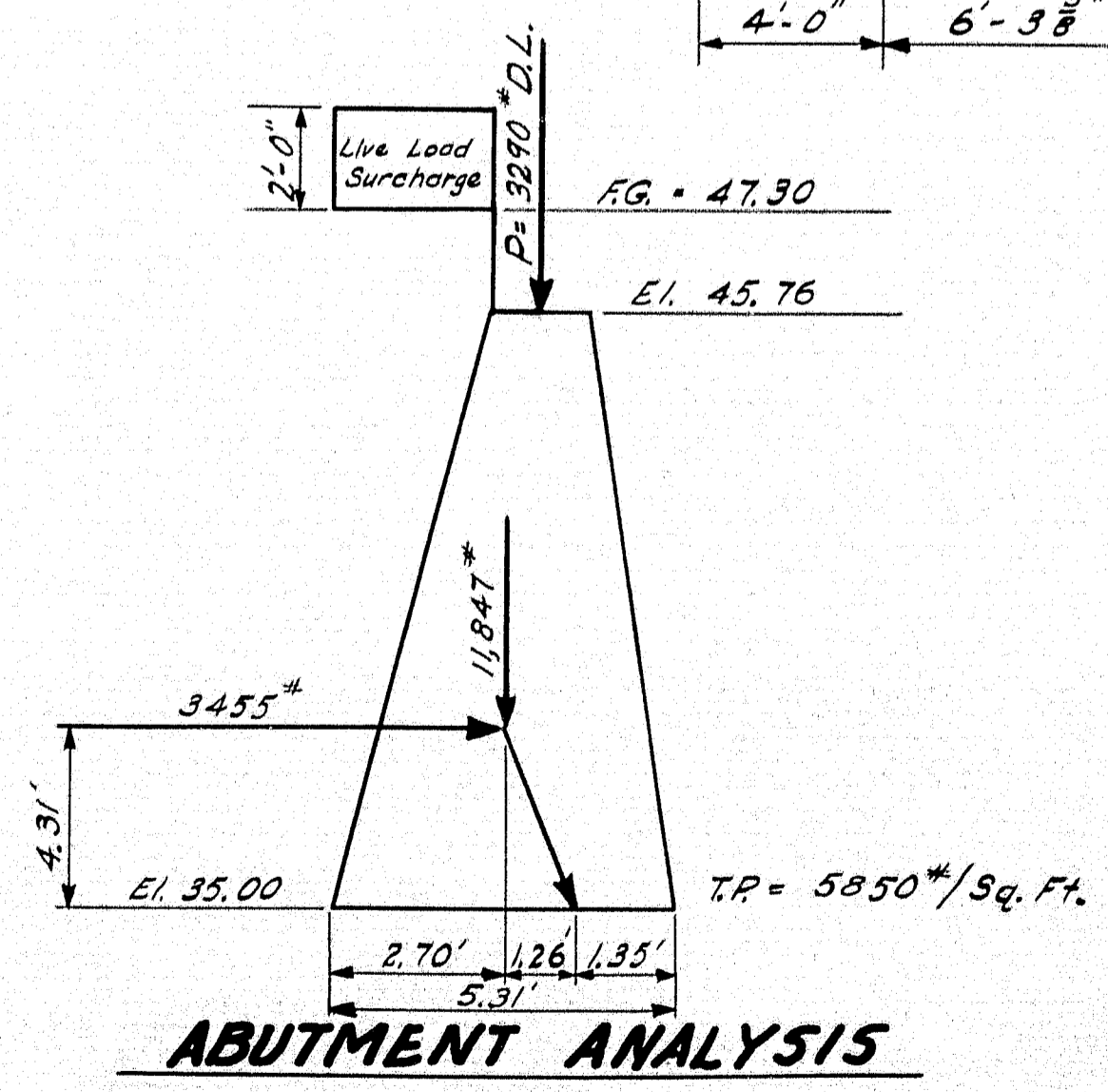
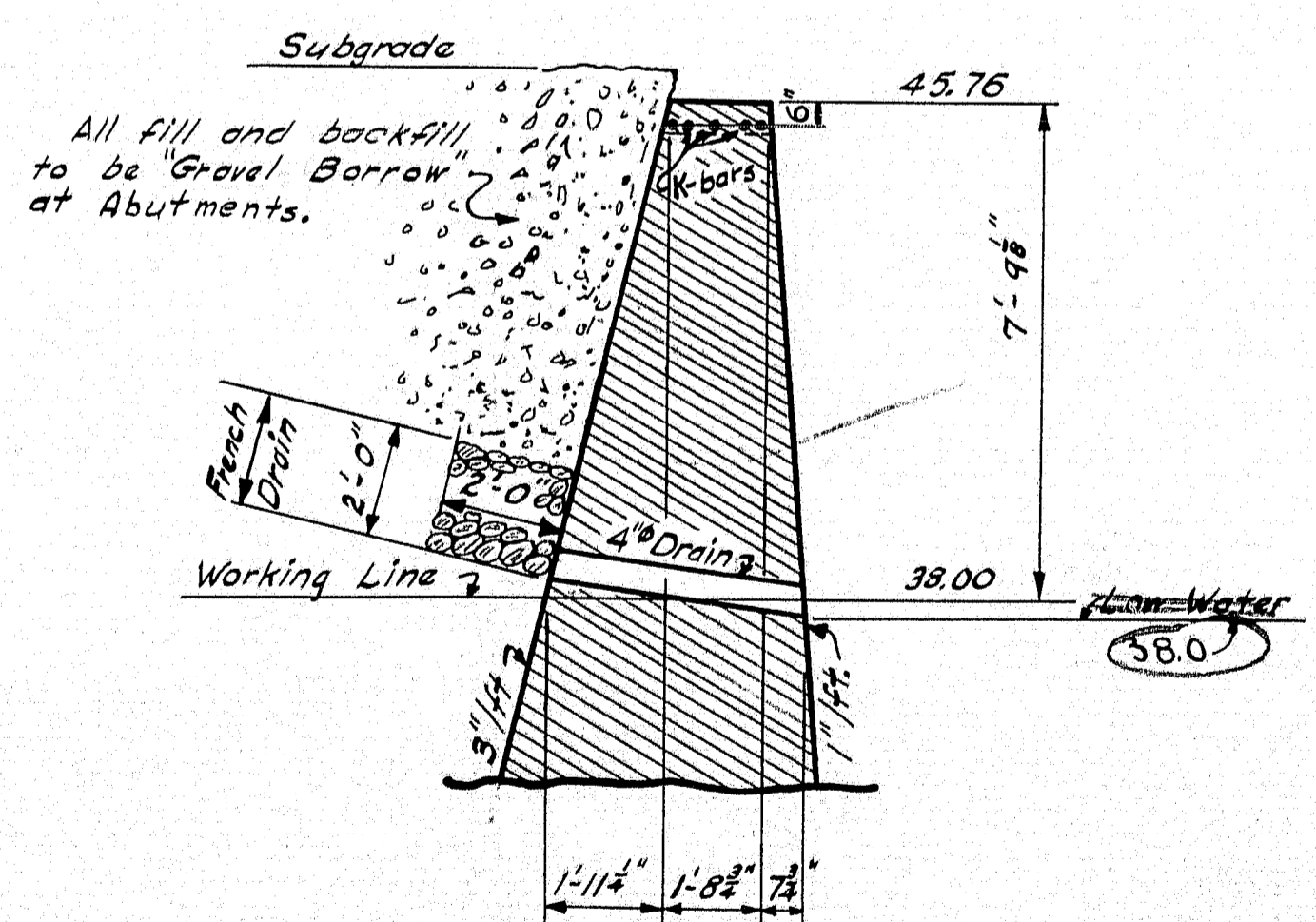


Note: Cover the 1/2\" open slot between the superstructure and substructure on the back side with two layers of heavy roofing 10\" wide. Coat the surface of concrete and back of each layer as applied with a suitable grade of roofing cement. Recess area to be covered 1/4\".

Note: Place K-bars at junction of wings and breast walls, 6\" from back forms at 1'-5\" spacing vertically and 6\" below bridge seat at 4\" horizontally. Bend bars in field to fit.

French Drains 2'-0\" wide in rear of abutments as shown, also in rear of wing walls.

Exact location of 4\" Drains to be determined during construction by Engineer.

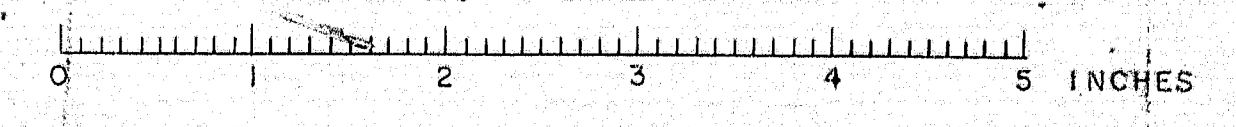


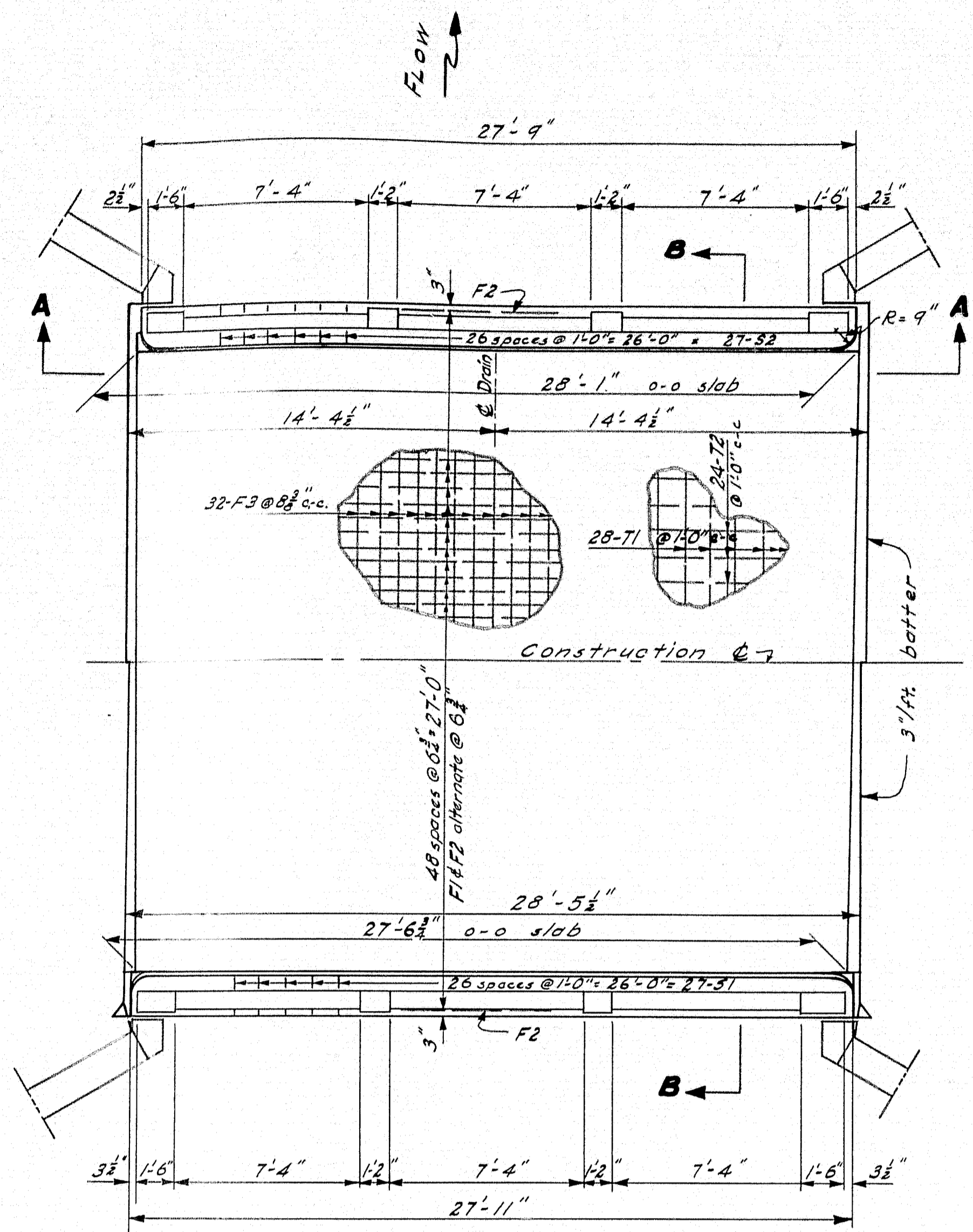
Revised as built. Nov. 1952 cas

~ CONCRETE CLASSIFICATION ~

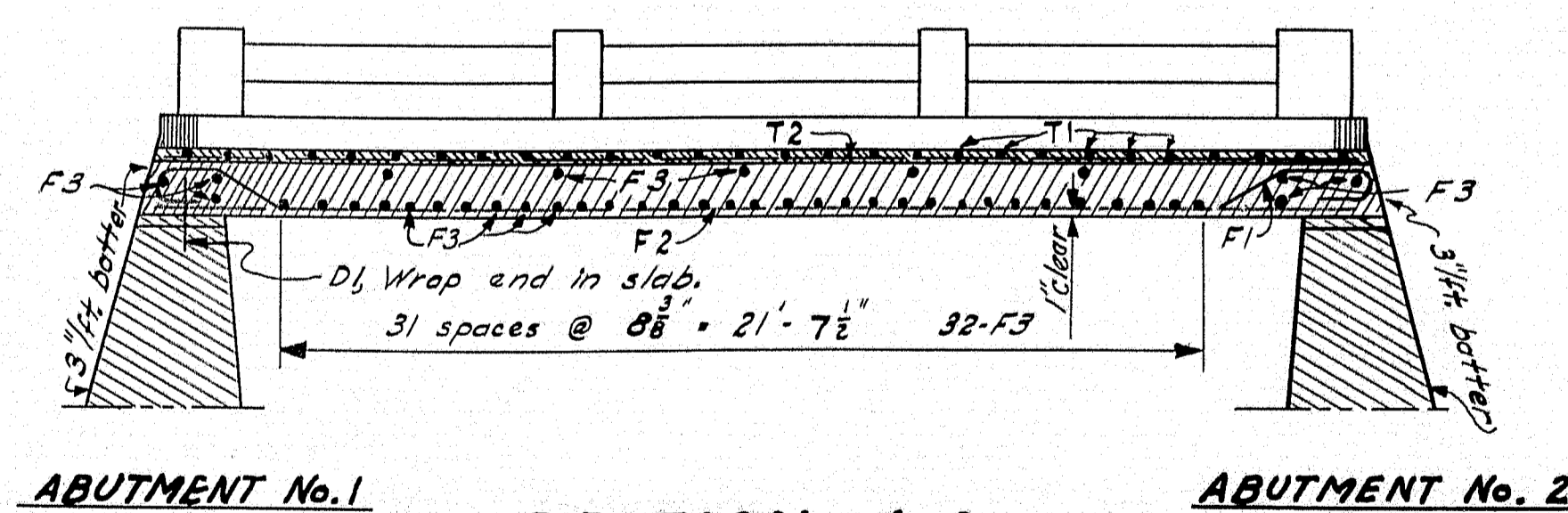
Abutments ..... Class B  
 Rail Posts & Bars ..... Class Y  
 Slab ..... Class A  
 Wearing Surface ..... Class A-A

|   |                          |
|---|--------------------------|
| DESIGN - MAZEIKO                            | BRIDGE 5465              |
| TRACE - MAZEIKO                             |                          |
| CHECK - MAZEIKO                             |                          |
| STATE HIGHWAY COMMISSION<br>BRIDGE DIVISION |                          |
| <b>CHASE MILLS BRIDGE</b>                   |                          |
| OVER  |                          |
| <b>GARDNER LAKE OUTLET</b>                  |                          |
| IN THE TOWN OF                              |                          |
| <b>EAST MACHIAS</b>                         |                          |
| <b>WASHINGTON COUNTY</b>                    |                          |
| SUBSTRUCTURE                                |                          |
| SHEET 3 OF 4                                | AUGUSTA, MAINE FEB. 1952 |

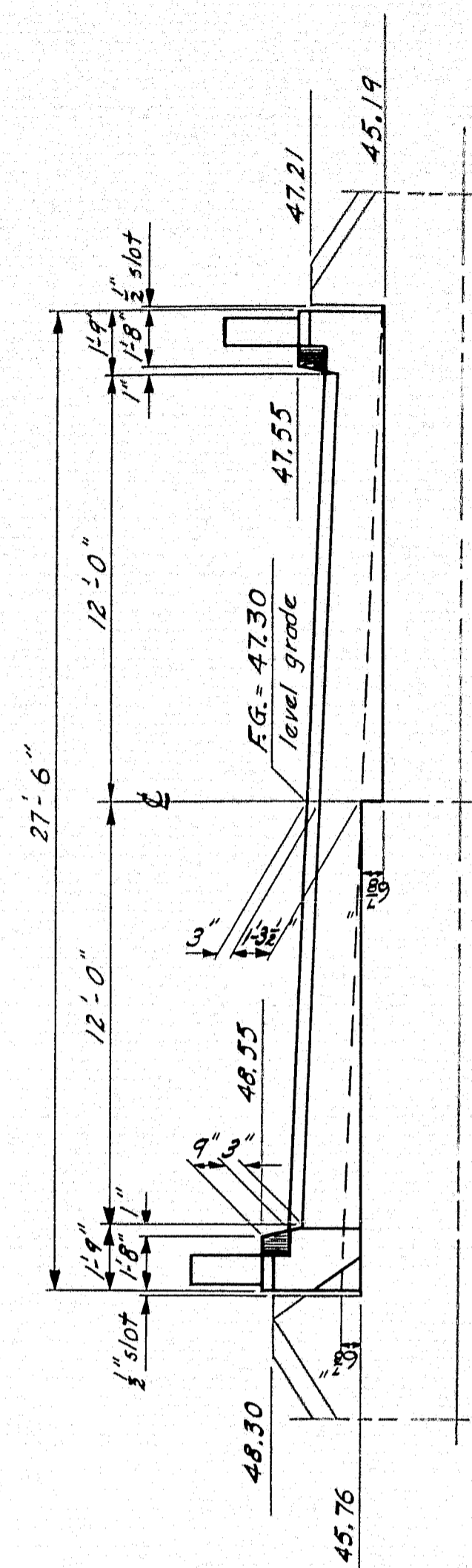




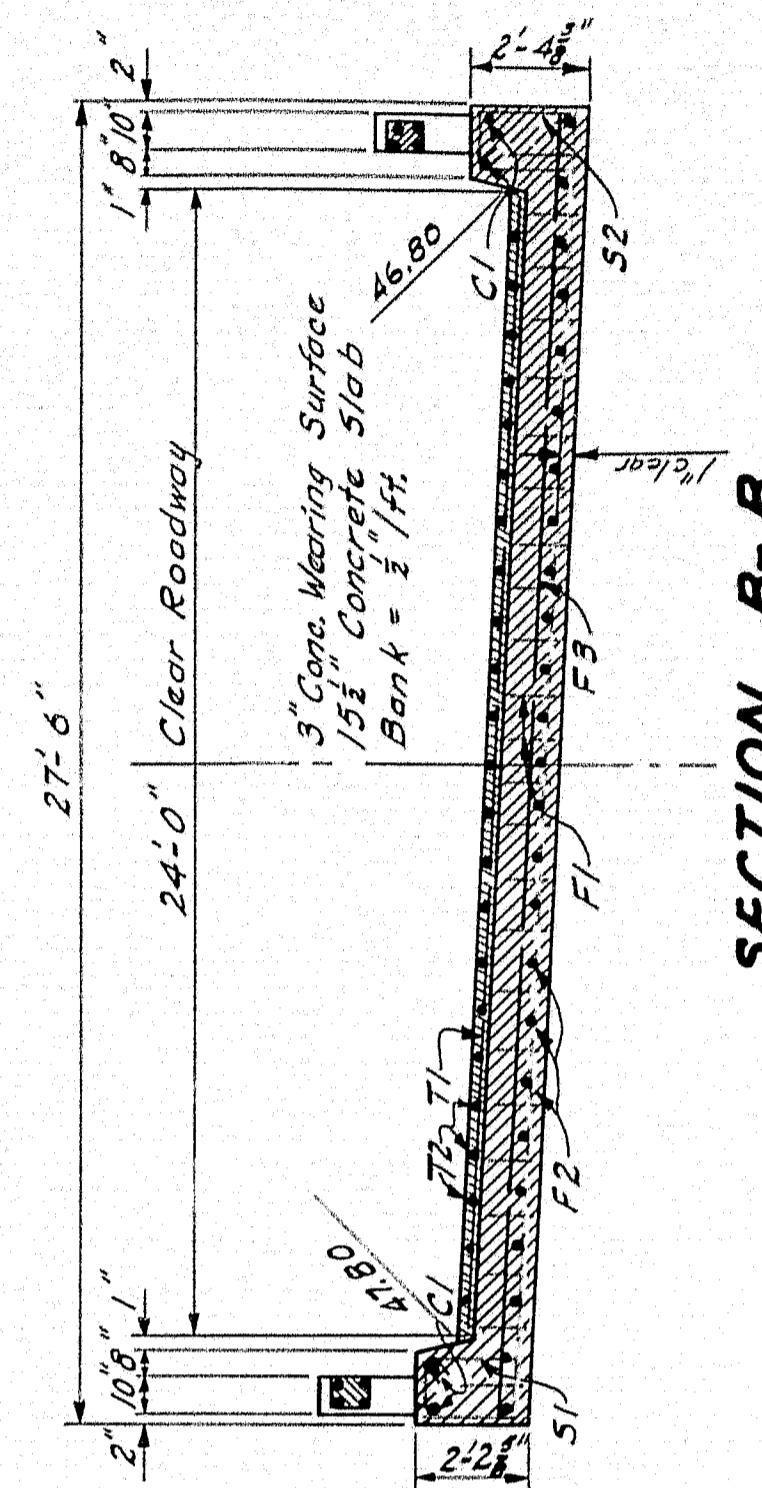
PLAN



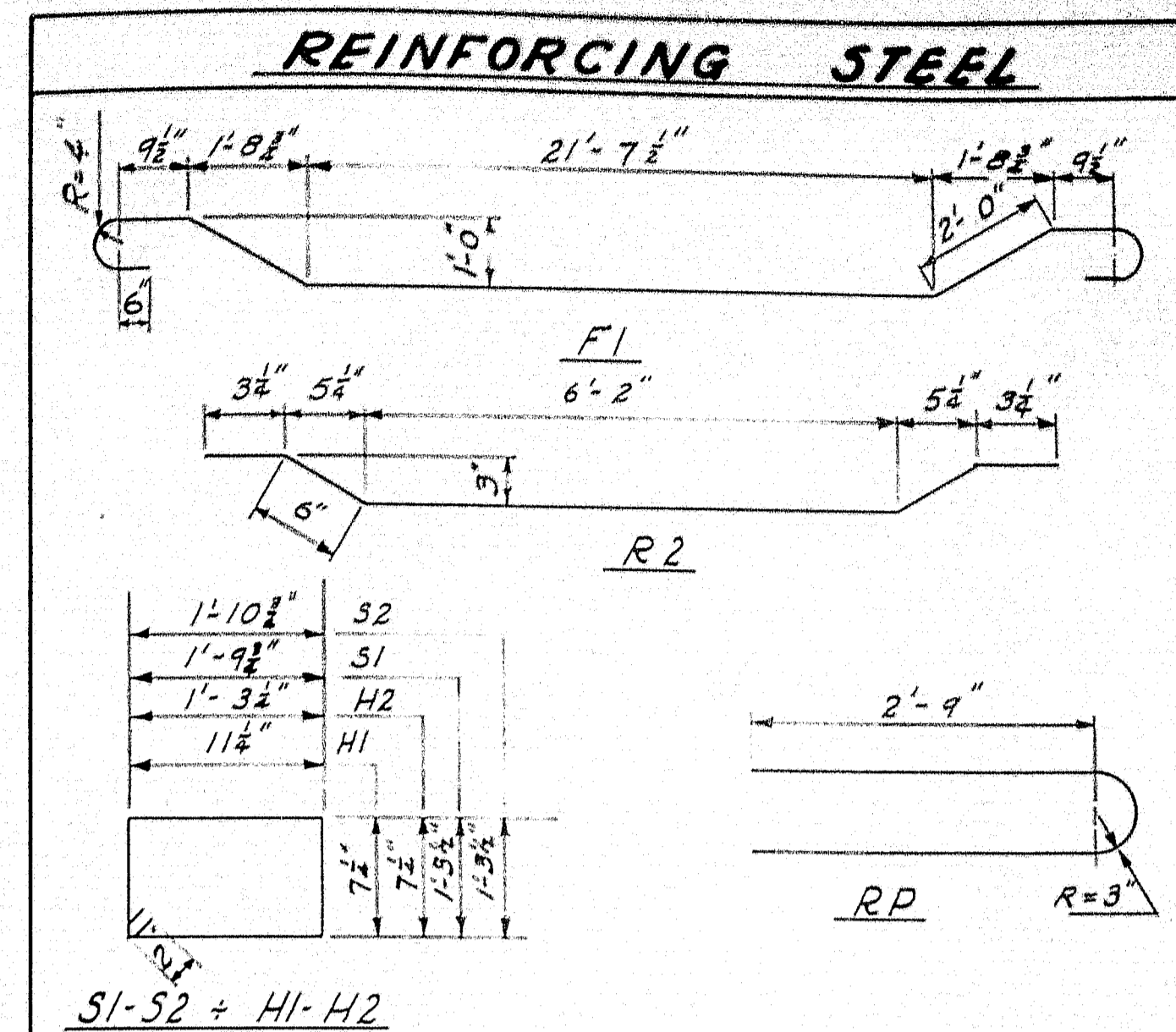
SECTION A-A



END ELEVATION

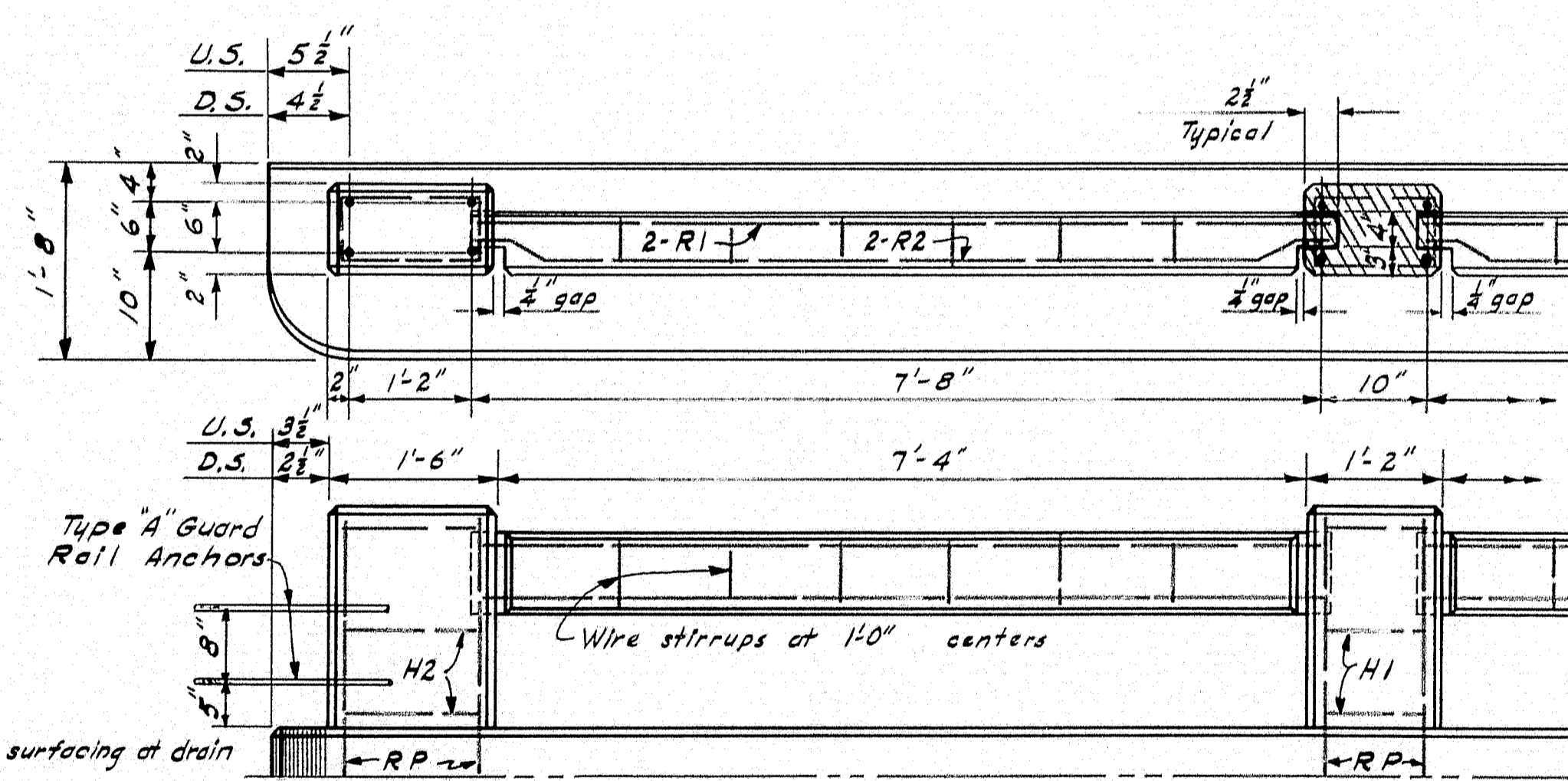


SECTION B-B

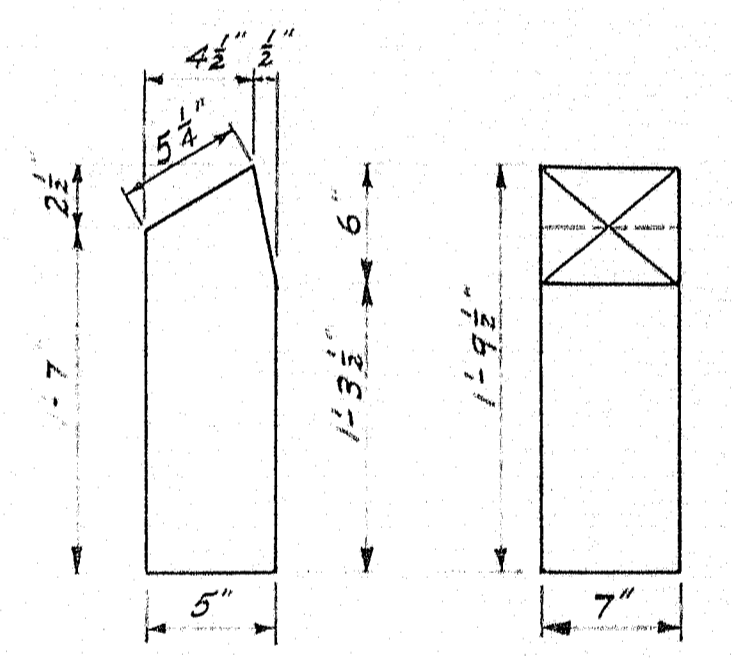


| BENT BARS |      |     |           | STRAIGHT BARS   |      |      |     |         |               |
|-----------|------|-----|-----------|-----------------|------|------|-----|---------|---------------|
| Mark      | Size | No. | Length    | Location        | Mark | Size | No. | Length  | Location      |
| F1        | #10  | 24  | 30'-4"    | Slab            | F2   | #10  | 25  | 27'-10" | Slab          |
| S1        | #3   | 27  | 6'-6 1/2" | Curb U.S.       | F3   | #5   | 43  | 27'-2"  | Slab          |
| S2        | #3   | 27  | 6'-8 1/2" | Curb D.S.       | T1   | #3   | 28  | 23'-8"  | Wearing Surf. |
| H1        | #3   | 12  | 3'-5"     | Int. Rail Posts | T2   | #3   | 24  | 27'-4"  | Wearing Surf. |
| H2        | #3   | 12  | 4'-1"     | End Rail Posts  | R1   | #4   | 12  | 7'-7"   | Rail Bar      |
| R2        | #4   | 12  | 7'-8 1/2" | Rail Bar        | C1   | #4   | 4   | 27'-0"  | Curb          |
| RP        | #6   | 16  | 6'-3 1/2" | All Rail Posts  | D1   | #6   | 10  | 1'-6"   | Dowels        |
|           |      |     |           |                 | K    | #6   | 48  | 8'-0"   | Abutments     |

All reinforcing steel shall conform to ASTM Specifications A305-49



RAIL DETAIL



DRAIN DETAIL

Notes: Steel for the rail posts to be set before curb concrete is placed. Rail bars are to be precast and set into position so that the tongue ends project into the post forms 2 1/2". Wrap the tongue ends with two layers of heavy roofing. Cut away all exposed edges of roofing after the posts have been built. Curb to be cast with slab. Construct wire stirrups for the rail bars of #9 annealed wire making a complete turn about each "R" bar. Chamfer all exposed edges of concrete 1/4" unless otherwise noted.

-DESIGN-  
Loading H-15-44  
W = 18,000  
L = 120  
n = 10

DESIGN - MAZEIKO  
TRACE - MAZEIKO  
CHECK - R.B.P.

BRIDGE 5465

STATE HIGHWAY COMMISSION  
BRIDGE DIVISION

**CHASE MILLS BRIDGE**  
OVER  
**GARDNER LAKE OUTLET**  
IN THE TOWN OF  
**EAST MACHIAS**  
**WASHINGTON COUNTY**

SUPERSTRUCTURE  
SHEET 107-4 AUGUSTA, MAINE FEB 1952

