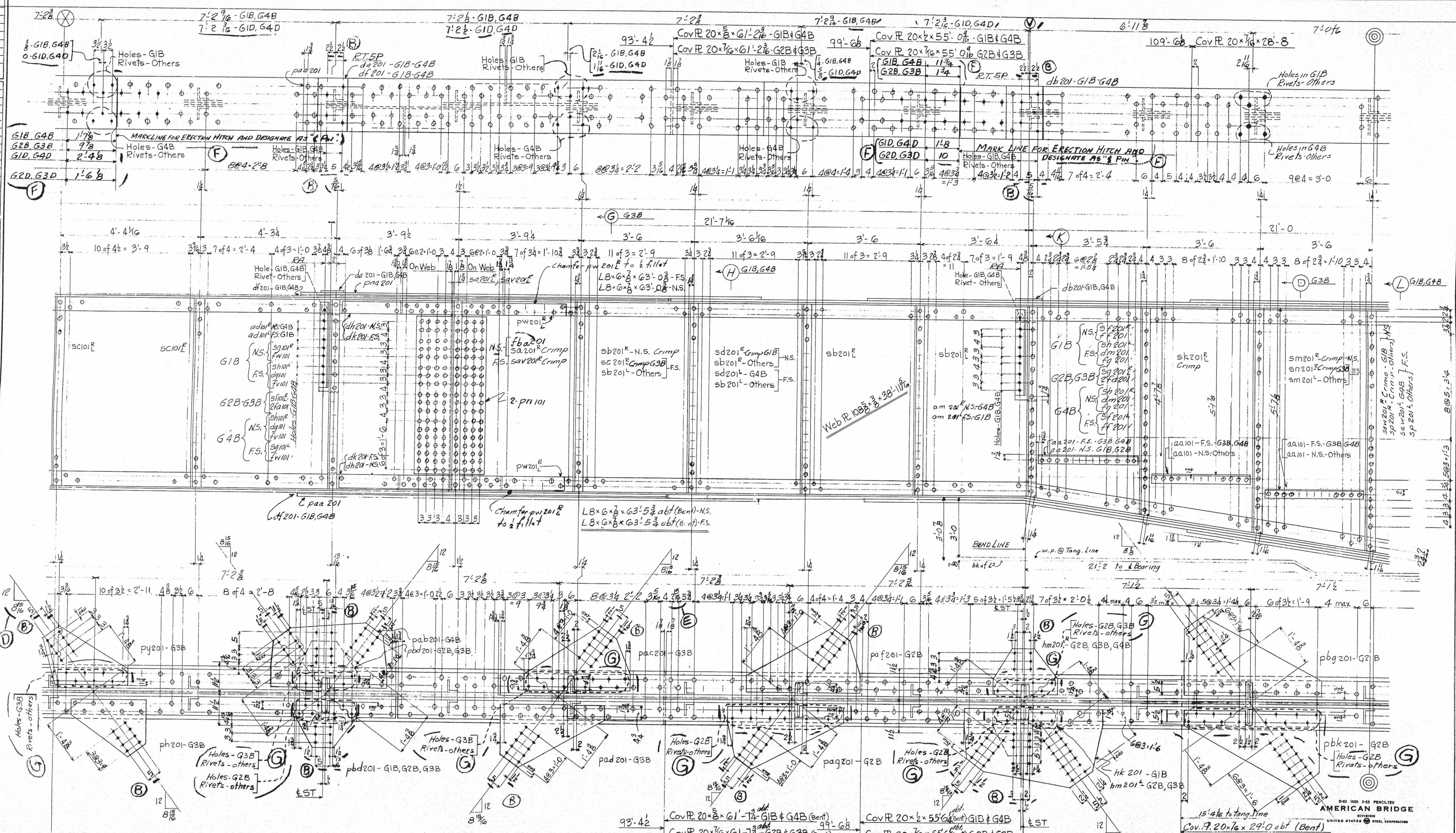


STATE OF MAINE
STATE HIGHWAY COMMISSION
BANGOR-BREWER BRIDGE
PENOBSCOT RIVER
BANGOR, MAINE

F		DRAWINGS MADE AT	TRENTON	PLANT
E		WORK FABRICATED AT	AMBRIDGE	PLANT
D		IN CHARGE OF	E.B. MARKS	
C	5-18-54	DRAW. MADE BY	W.J.N.P.	DATE 10-21-53
B	4-12-54	DRAW. CHECKED BY	FEL	DATE 2-2-54
A	2-22-54			
X	2-18-54			
REVISIONS		ORDER No.	SHEET No.	
		Q4150	201BF	

62-181

REV.	DATE	BY	CHKD.	DESCRIPTION
1	10-21-53	W.J.B.		AS BUILT
2	10-21-53	W.J.B.		AS BUILT
3	10-21-53	W.J.B.		AS BUILT
4	10-21-53	W.J.B.		AS BUILT
5	10-21-53	W.J.B.		AS BUILT
6	10-21-53	W.J.B.		AS BUILT
7	10-21-53	W.J.B.		AS BUILT
8	10-21-53	W.J.B.		AS BUILT
9	10-21-53	W.J.B.		AS BUILT
10	10-21-53	W.J.B.		AS BUILT
11	10-21-53	W.J.B.		AS BUILT
12	10-21-53	W.J.B.		AS BUILT
13	10-21-53	W.J.B.		AS BUILT
14	10-21-53	W.J.B.		AS BUILT
15	10-21-53	W.J.B.		AS BUILT
16	10-21-53	W.J.B.		AS BUILT
17	10-21-53	W.J.B.		AS BUILT
18	10-21-53	W.J.B.		AS BUILT
19	10-21-53	W.J.B.		AS BUILT
20	10-21-53	W.J.B.		AS BUILT
21	10-21-53	W.J.B.		AS BUILT
22	10-21-53	W.J.B.		AS BUILT
23	10-21-53	W.J.B.		AS BUILT
24	10-21-53	W.J.B.		AS BUILT
25	10-21-53	W.J.B.		AS BUILT
26	10-21-53	W.J.B.		AS BUILT
27	10-21-53	W.J.B.		AS BUILT
28	10-21-53	W.J.B.		AS BUILT
29	10-21-53	W.J.B.		AS BUILT
30	10-21-53	W.J.B.		AS BUILT
31	10-21-53	W.J.B.		AS BUILT
32	10-21-53	W.J.B.		AS BUILT
33	10-21-53	W.J.B.		AS BUILT
34	10-21-53	W.J.B.		AS BUILT
35	10-21-53	W.J.B.		AS BUILT
36	10-21-53	W.J.B.		AS BUILT
37	10-21-53	W.J.B.		AS BUILT
38	10-21-53	W.J.B.		AS BUILT
39	10-21-53	W.J.B.		AS BUILT
40	10-21-53	W.J.B.		AS BUILT
41	10-21-53	W.J.B.		AS BUILT
42	10-21-53	W.J.B.		AS BUILT
43	10-21-53	W.J.B.		AS BUILT
44	10-21-53	W.J.B.		AS BUILT
45	10-21-53	W.J.B.		AS BUILT
46	10-21-53	W.J.B.		AS BUILT
47	10-21-53	W.J.B.		AS BUILT
48	10-21-53	W.J.B.		AS BUILT
49	10-21-53	W.J.B.		AS BUILT
50	10-21-53	W.J.B.		AS BUILT
51	10-21-53	W.J.B.		AS BUILT
52	10-21-53	W.J.B.		AS BUILT
53	10-21-53	W.J.B.		AS BUILT
54	10-21-53	W.J.B.		AS BUILT
55	10-21-53	W.J.B.		AS BUILT
56	10-21-53	W.J.B.		AS BUILT
57	10-21-53	W.J.B.		AS BUILT
58	10-21-53	W.J.B.		AS BUILT
59	10-21-53	W.J.B.		AS BUILT
60	10-21-53	W.J.B.		AS BUILT
61	10-21-53	W.J.B.		AS BUILT
62	10-21-53	W.J.B.		AS BUILT
63	10-21-53	W.J.B.		AS BUILT
64	10-21-53	W.J.B.		AS BUILT
65	10-21-53	W.J.B.		AS BUILT
66	10-21-53	W.J.B.		AS BUILT
67	10-21-53	W.J.B.		AS BUILT
68	10-21-53	W.J.B.		AS BUILT
69	10-21-53	W.J.B.		AS BUILT
70	10-21-53	W.J.B.		AS BUILT
71	10-21-53	W.J.B.		AS BUILT
72	10-21-53	W.J.B.		AS BUILT
73	10-21-53	W.J.B.		AS BUILT
74	10-21-53	W.J.B.		AS BUILT
75	10-21-53	W.J.B.		AS BUILT
76	10-21-53	W.J.B.		AS BUILT
77	10-21-53	W.J.B.		AS BUILT
78	10-21-53	W.J.B.		AS BUILT
79	10-21-53	W.J.B.		AS BUILT
80	10-21-53	W.J.B.		AS BUILT
81	10-21-53	W.J.B.		AS BUILT
82	10-21-53	W.J.B.		AS BUILT
83	10-21-53	W.J.B.		AS BUILT
84	10-21-53	W.J.B.		AS BUILT
85	10-21-53	W.J.B.		AS BUILT
86	10-21-53	W.J.B.		AS BUILT
87	10-21-53	W.J.B.		AS BUILT
88	10-21-53	W.J.B.		AS BUILT
89	10-21-53	W.J.B.		AS BUILT
90	10-21-53	W.J.B.		AS BUILT
91	10-21-53	W.J.B.		AS BUILT
92	10-21-53	W.J.B.		AS BUILT
93	10-21-53	W.J.B.		AS BUILT
94	10-21-53	W.J.B.		AS BUILT
95	10-21-53	W.J.B.		AS BUILT
96	10-21-53	W.J.B.		AS BUILT
97	10-21-53	W.J.B.		AS BUILT
98	10-21-53	W.J.B.		AS BUILT
99	10-21-53	W.J.B.		AS BUILT
100	10-21-53	W.J.B.		AS BUILT

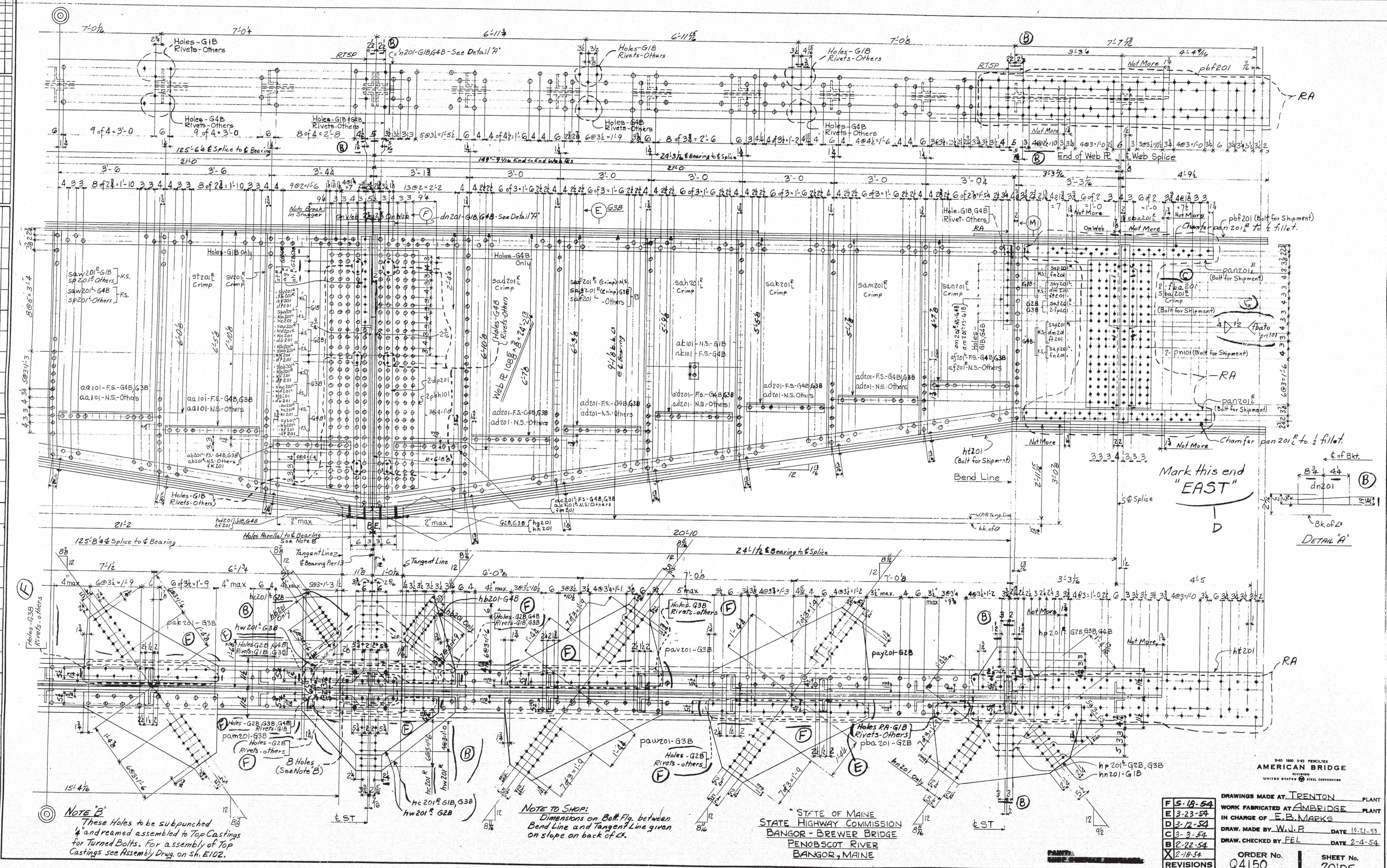


STATE OF MAINE
STATE HIGHWAY COMMISSION
BANGOR - BREWER BRIDGE
PENOBSCOT RIVER
BANGOR, MAINE

REVISED	DATE	BY	CHKD.	DESCRIPTION
F	10-21-53	W.J.B.		AS BUILT
E	10-21-53	W.J.B.		AS BUILT
D	10-21-53	W.J.B.		AS BUILT
C	10-21-53	W.J.B.		AS BUILT
B	10-21-53	W.J.B.		AS BUILT
A	10-21-53	W.J.B.		AS BUILT

DRAWINGS MADE AT TRENTON PLANT
WORK FABRICATED AT AMBRIDGE PLANT
IN CHARGE OF E.B. MARKS
DRAW. MADE BY W.J.B. DATE 10-21-53
DRAW. CHECKED BY FEL. DATE 2-3-54
ORDER NO. Q4150
SHEET NO. 201CF

REV	DATE	BY	CHK	DESCRIPTION
1	12-18-54	WLP		REVISED
2	12-18-54	WLP		REVISED
3	12-18-54	WLP		REVISED
4	12-18-54	WLP		REVISED
5	12-18-54	WLP		REVISED
6	12-18-54	WLP		REVISED
7	12-18-54	WLP		REVISED
8	12-18-54	WLP		REVISED
9	12-18-54	WLP		REVISED
10	12-18-54	WLP		REVISED
11	12-18-54	WLP		REVISED
12	12-18-54	WLP		REVISED
13	12-18-54	WLP		REVISED
14	12-18-54	WLP		REVISED
15	12-18-54	WLP		REVISED
16	12-18-54	WLP		REVISED
17	12-18-54	WLP		REVISED
18	12-18-54	WLP		REVISED
19	12-18-54	WLP		REVISED
20	12-18-54	WLP		REVISED
21	12-18-54	WLP		REVISED
22	12-18-54	WLP		REVISED
23	12-18-54	WLP		REVISED
24	12-18-54	WLP		REVISED
25	12-18-54	WLP		REVISED
26	12-18-54	WLP		REVISED
27	12-18-54	WLP		REVISED
28	12-18-54	WLP		REVISED
29	12-18-54	WLP		REVISED
30	12-18-54	WLP		REVISED
31	12-18-54	WLP		REVISED
32	12-18-54	WLP		REVISED
33	12-18-54	WLP		REVISED
34	12-18-54	WLP		REVISED
35	12-18-54	WLP		REVISED
36	12-18-54	WLP		REVISED
37	12-18-54	WLP		REVISED
38	12-18-54	WLP		REVISED
39	12-18-54	WLP		REVISED
40	12-18-54	WLP		REVISED
41	12-18-54	WLP		REVISED
42	12-18-54	WLP		REVISED
43	12-18-54	WLP		REVISED
44	12-18-54	WLP		REVISED
45	12-18-54	WLP		REVISED
46	12-18-54	WLP		REVISED
47	12-18-54	WLP		REVISED
48	12-18-54	WLP		REVISED
49	12-18-54	WLP		REVISED
50	12-18-54	WLP		REVISED
51	12-18-54	WLP		REVISED
52	12-18-54	WLP		REVISED
53	12-18-54	WLP		REVISED
54	12-18-54	WLP		REVISED
55	12-18-54	WLP		REVISED
56	12-18-54	WLP		REVISED
57	12-18-54	WLP		REVISED
58	12-18-54	WLP		REVISED
59	12-18-54	WLP		REVISED
60	12-18-54	WLP		REVISED
61	12-18-54	WLP		REVISED
62	12-18-54	WLP		REVISED
63	12-18-54	WLP		REVISED
64	12-18-54	WLP		REVISED
65	12-18-54	WLP		REVISED
66	12-18-54	WLP		REVISED
67	12-18-54	WLP		REVISED
68	12-18-54	WLP		REVISED
69	12-18-54	WLP		REVISED
70	12-18-54	WLP		REVISED
71	12-18-54	WLP		REVISED
72	12-18-54	WLP		REVISED
73	12-18-54	WLP		REVISED
74	12-18-54	WLP		REVISED
75	12-18-54	WLP		REVISED
76	12-18-54	WLP		REVISED
77	12-18-54	WLP		REVISED
78	12-18-54	WLP		REVISED
79	12-18-54	WLP		REVISED
80	12-18-54	WLP		REVISED
81	12-18-54	WLP		REVISED
82	12-18-54	WLP		REVISED
83	12-18-54	WLP		REVISED
84	12-18-54	WLP		REVISED
85	12-18-54	WLP		REVISED
86	12-18-54	WLP		REVISED
87	12-18-54	WLP		REVISED
88	12-18-54	WLP		REVISED
89	12-18-54	WLP		REVISED
90	12-18-54	WLP		REVISED
91	12-18-54	WLP		REVISED
92	12-18-54	WLP		REVISED
93	12-18-54	WLP		REVISED
94	12-18-54	WLP		REVISED
95	12-18-54	WLP		REVISED
96	12-18-54	WLP		REVISED
97	12-18-54	WLP		REVISED
98	12-18-54	WLP		REVISED
99	12-18-54	WLP		REVISED
100	12-18-54	WLP		REVISED



AMERICAN BRIDGE

UNITED STATES STEEL COMPANY

DRAWING WITH BILL

ORDERED

ITEM

REMARKS

ASSEMBLING

MARK

SHAPE

LENGTH

NO. OF

PIECES

LINE

1

2

3

4

5

6

7

8

9

10

11

12

13

14

15

16

17

18

19

20

21

22

23

24

25

26

27

28

29

30

31

32

33

34

35

36

37

38

39

40

41

42

43

44

45

46

47

48

49

50

51

52

53

54

55

56

57

58

59

60

61

62

63

64

65

66

67

68

69

70

71

72

73

74

75

76

77

78

79

80

81

82

83

84

85

86

87

88

89

90

91

92

93

94

95

96

97

98

99

100

101

102

103

104

105

106

107

108

109

110

111

112

113

114

115

116

117

118

119

120

121

122

123

124

125

126

127

128

129

130

131

132

133

134

135

136

137

138

139

140

141

142

143

144

145

146

147

148

149

150

151

152

153

154

155

156

157

158

159

160

161

162

163

164

165

166

167

168

169

170

171

172

173

174

175

176

177

178

179

180

181

182

183

184

185

186

187

188

189

190

191

192

193

194

195

196

197

198

199

200

201

202

203

204

205

206

207

208

209

210

211

212

213

214

215

216

217

218

219

220

221

222

223

224

225

226

227

228

229

230

231

232

233

234

235

236

237

238

239

240

241

242

243

244

245

246

247

248

249

250

251

252

253

254

255

256

257

258

259

260

261

262

263

264

265

266

267

268

269

270

271

272

273

274

275

276

277

278

279

280

281

282

283

284

285

286

287

288

289

290

291

292

293

294

295

296

297

298

299

300

301

302

303

304

305

306

307

308

309

310

311

312

313

314

315

316

317

318

319

320

AMERICAN BRIDGE COMPANY

LINE	ITEM	SHAPE	LENGTH	ASSEMBLING	REMARKS	ORDERED	CALCULATED
			Feet	Feet		ITEM	WEIGHT FOR ONE SHIP PIECE
1							
2							
3							
4							
5							
6							
7							
8							
9							
10							
11							
12							
13							
14							
15							
16							
17							
18							
19							
20							
21							
22							
23							
24							
25							
26							
27							
28							
29							
30							
31							
32							
33							
34							
35							
36							
37							
38							
39							
40							
41							
42							
43							
44							
45							
46							
47							
48							
49							
50							
51							
52							
53							
54							
55							
56							
57							
58							
59							
60							
61							
62							
63							
64							
65							
66							
67							

Sheet Total = 246881

STATE OF MAINE
STATE HIGHWAY COMMISSION
BANGOR-BREWER BRIDGE
OVER PENOBSCOT RIVER
BANGOR, MAINE

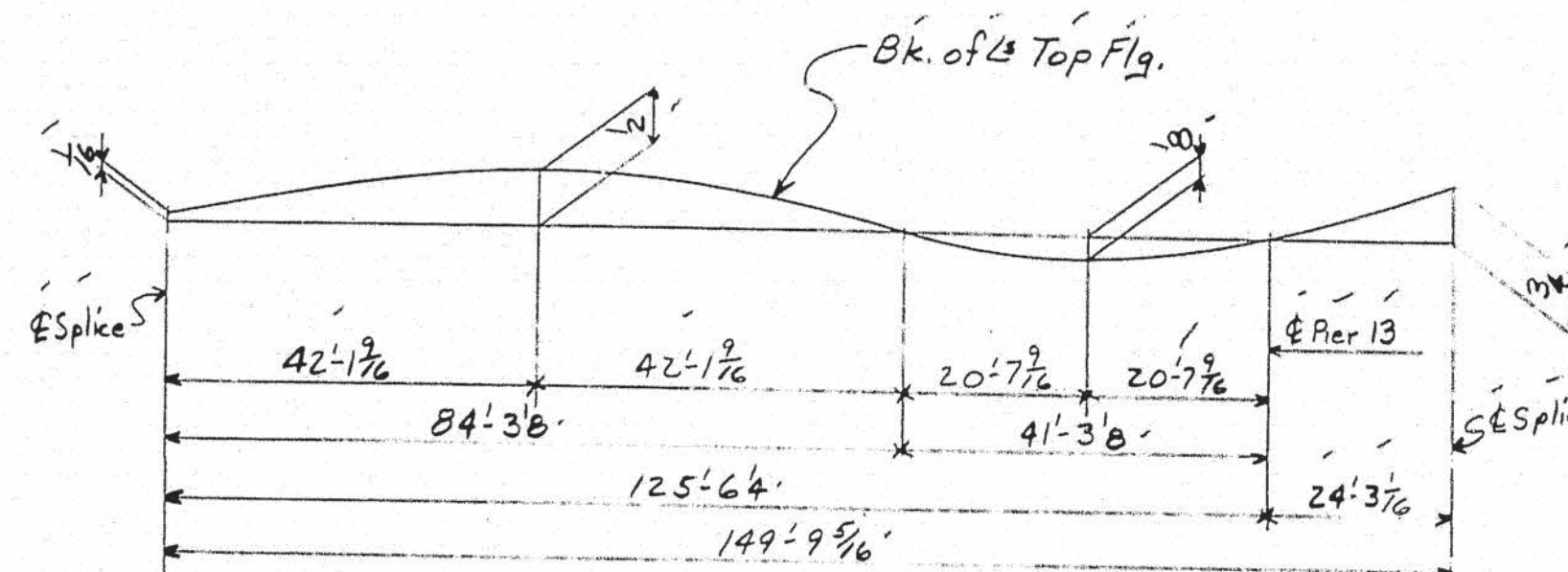
AMERICAN BRIDGE COMPANY
UNITED STATES STEEL CORPORATION SUBSIDIARY

DRAWINGS MADE AT Trenton PLANT
WORK FABRICATED AT Ambridge PLANT
IN CHARGE OF E.B. Marks
DRAW. MADE BY PRY DATE 2-5-54
DRAW. CHECKED BY FEL DATE 2-8-54

ORDER No. Q4150 SHEET No. 201F

REV. 201, 202

62-185



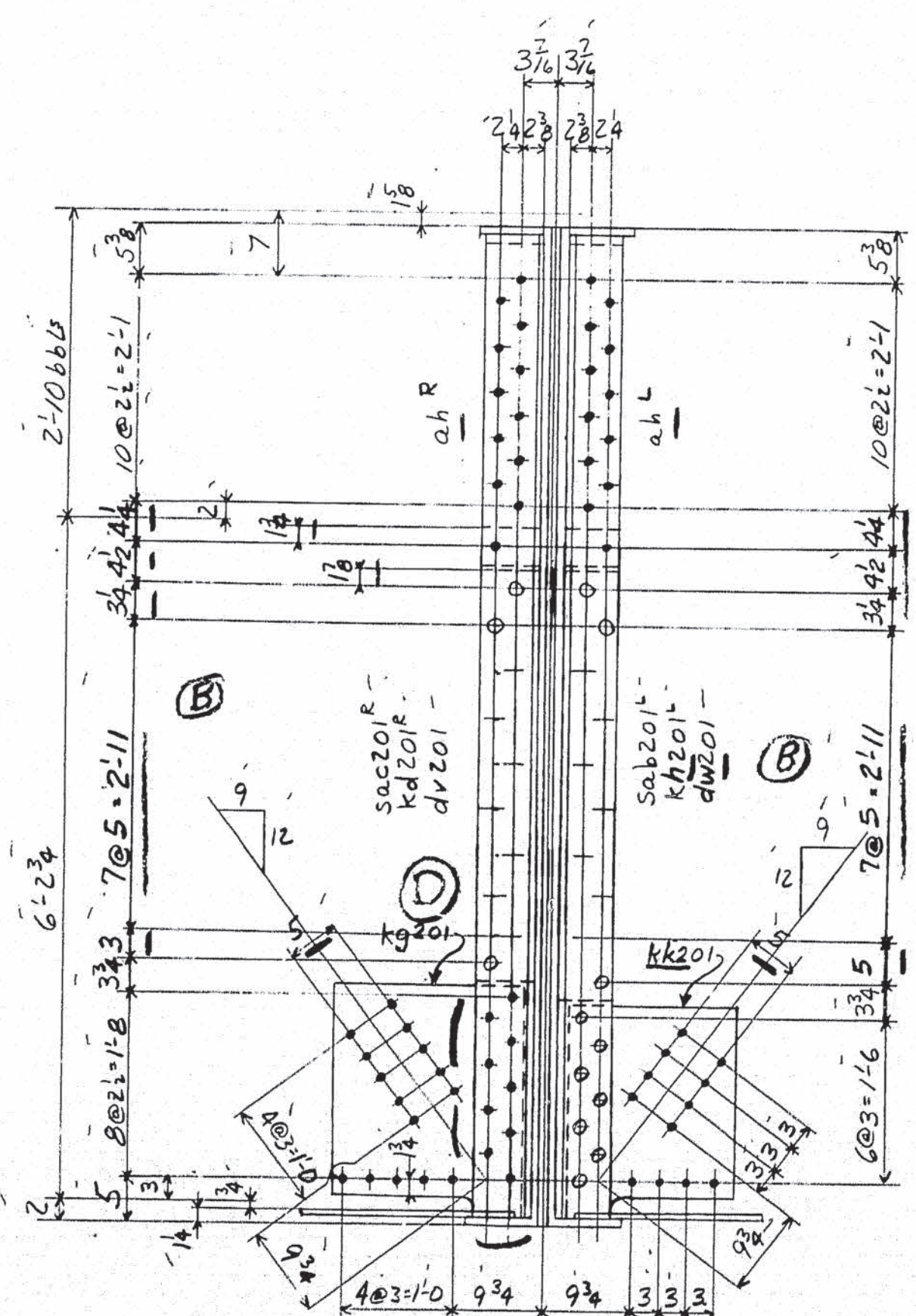
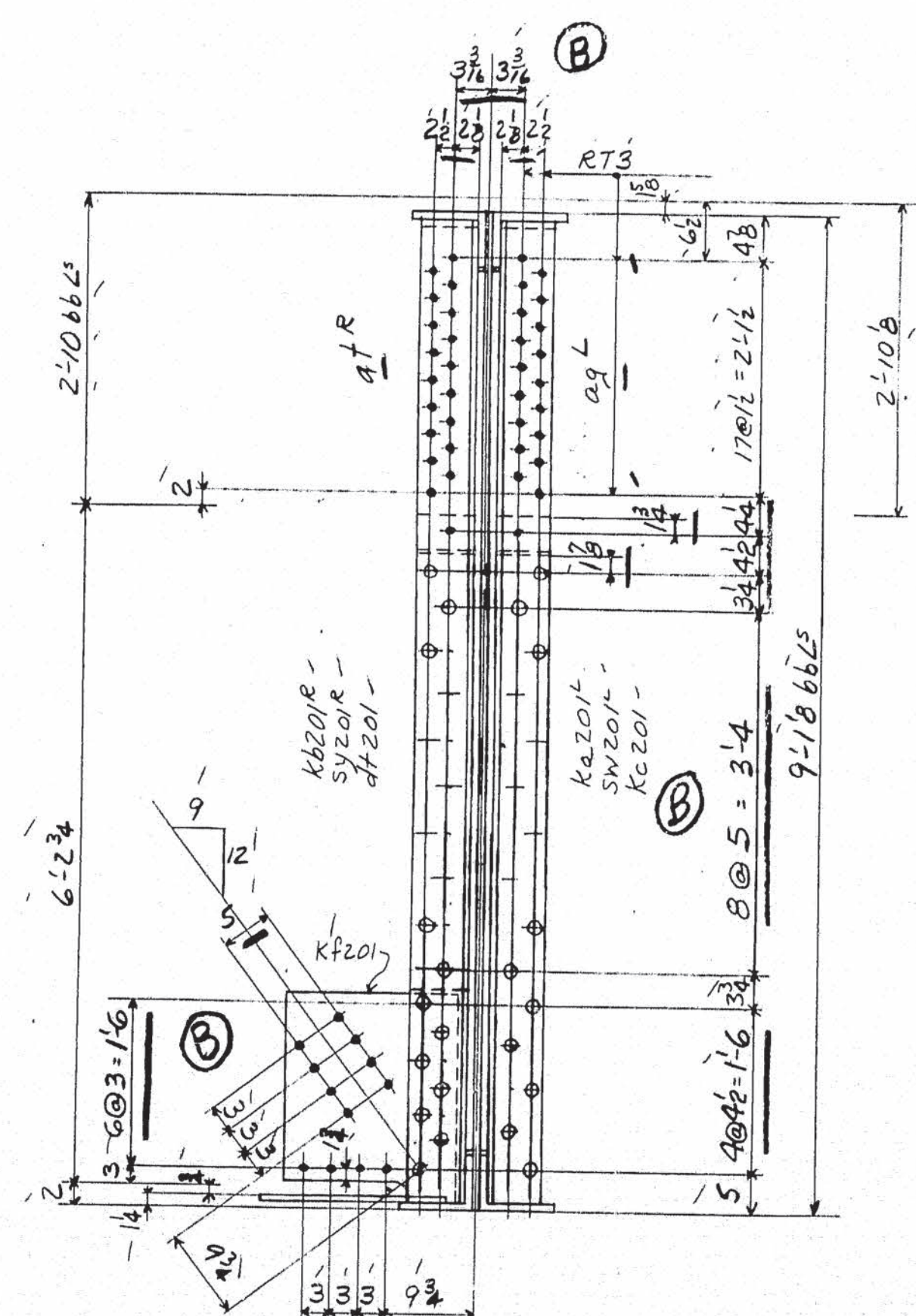
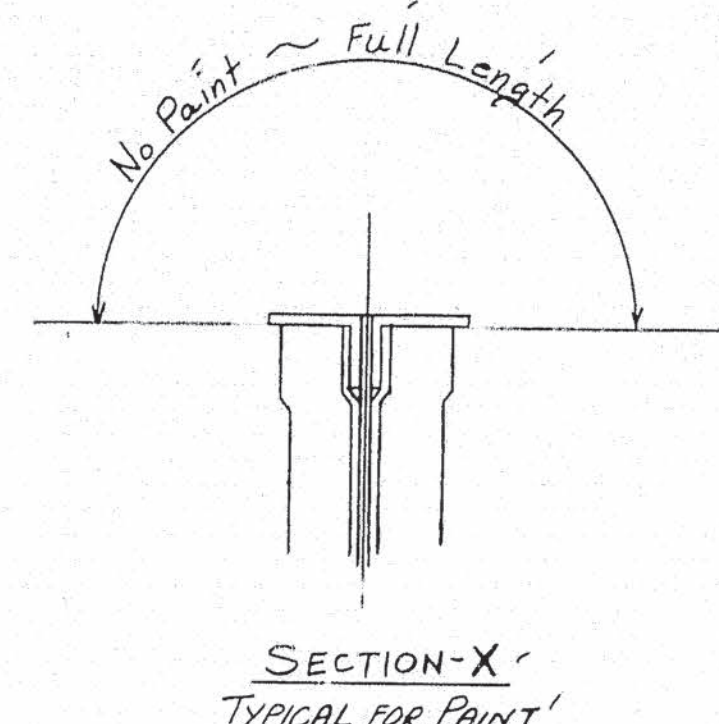
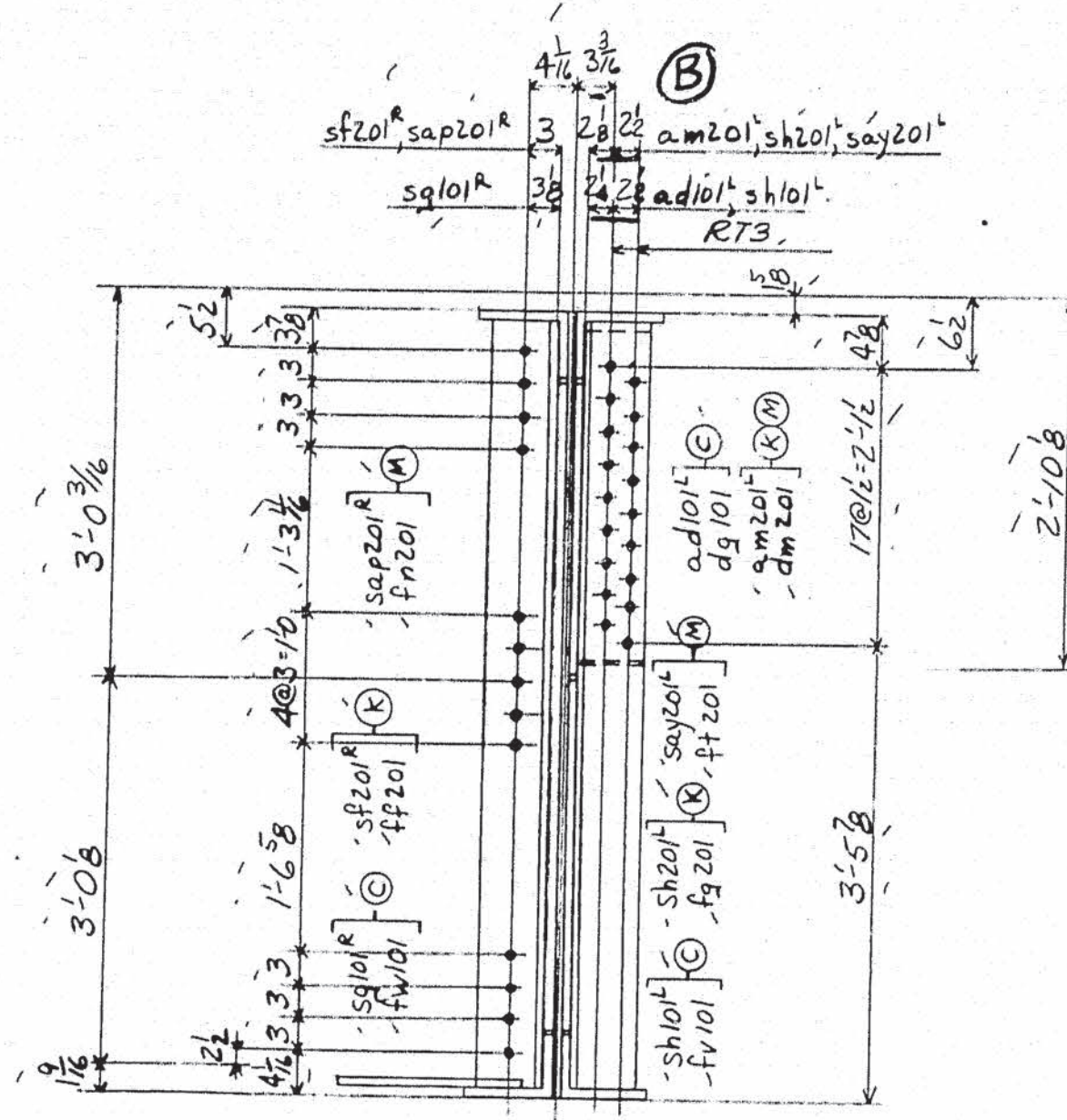
NOTES:

SPECIFICATIONS- Maine State Highway Commission 1945 and Special Provisions
MATERIAL- O.H. Steel ASTM A7-52T
RIVETS- 3/8" HOLES - 3/8" UNLESS NOTED
WORKMANSHIP- Holes in material thicker than the diameter of the rivet shall be drilled.
 Holes in main material, including holes at splices, in bearing stiffeners, and splice plates to be subpunched or subdrilled 1/4" and reamed to size.
 Holes marked RT to be subpunched or subdrilled 1/4" and reamed to size to a metal template.
 Holes marked RA to be subpunched or subdrilled 1/4" and reamed to size while connecting members are assembled to cambered position. (See Sheet E102)
 Connecting members to be matchmarked.
 Fillers and splice plates under stiffeners to fit within 1/8" of flange angles.
 B.E. indicates bearing end of stiffeners.
 Yes, Except as shown in Section X.
PAINT-
SHOP CONTACT SURFACES- No

LIFTING WT. = 35 TONS

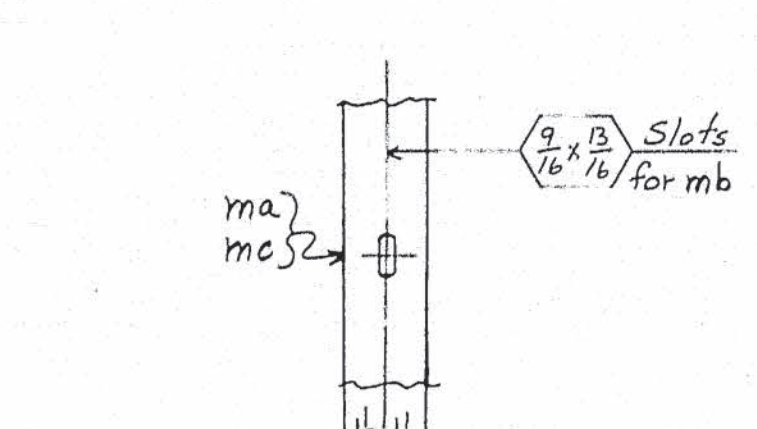
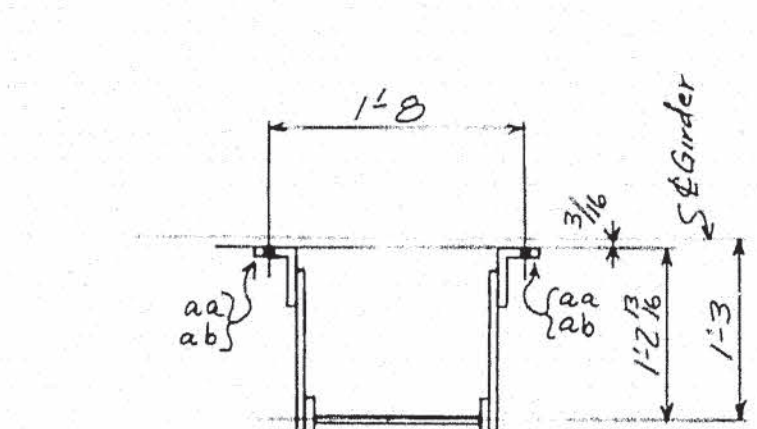
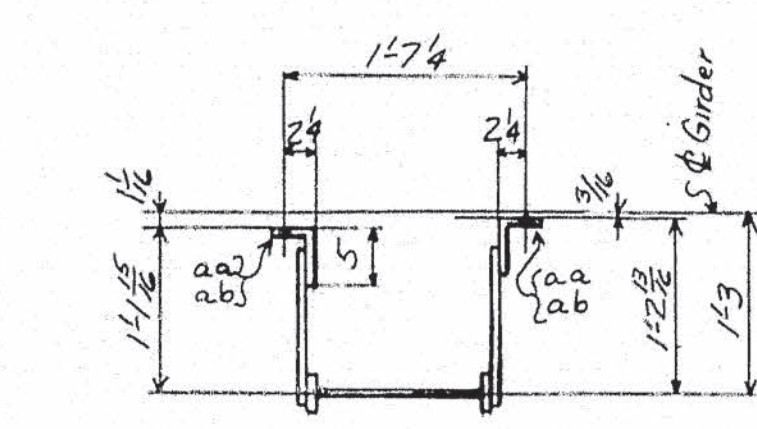
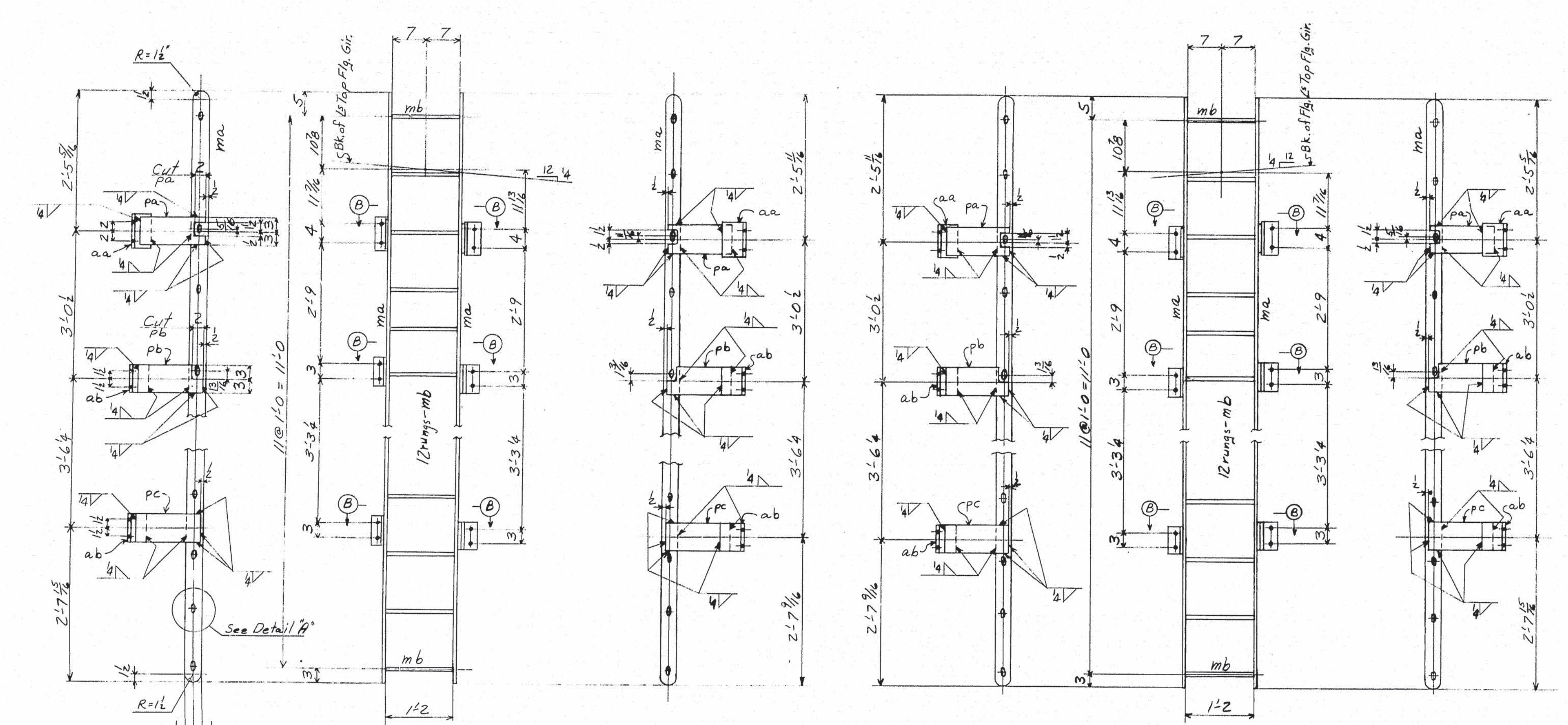
As Shipped Loose

SHEET 401 WORKS WITH THIS SHEET

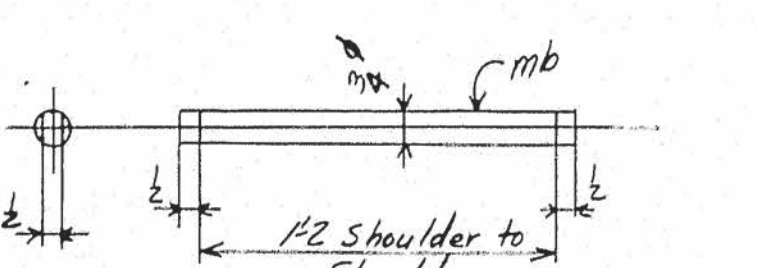


AMERICAN BRIDGE COMPANY

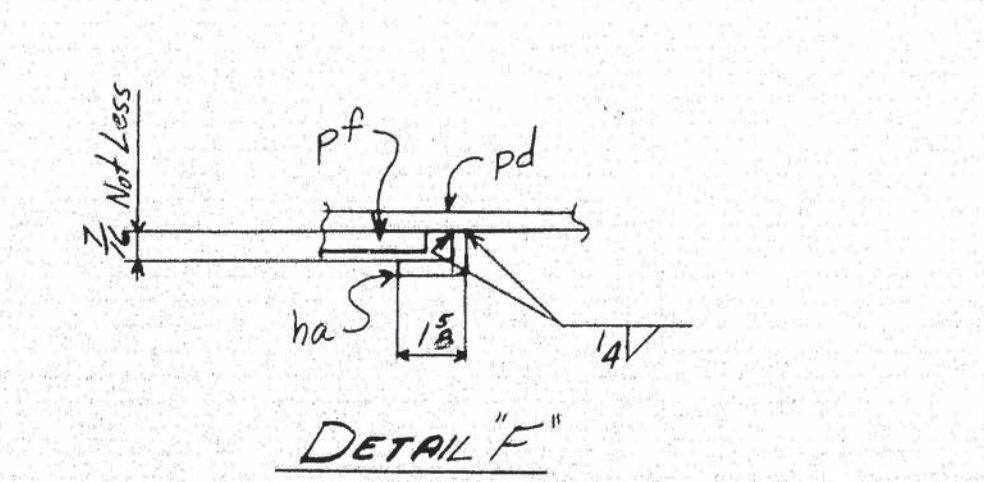
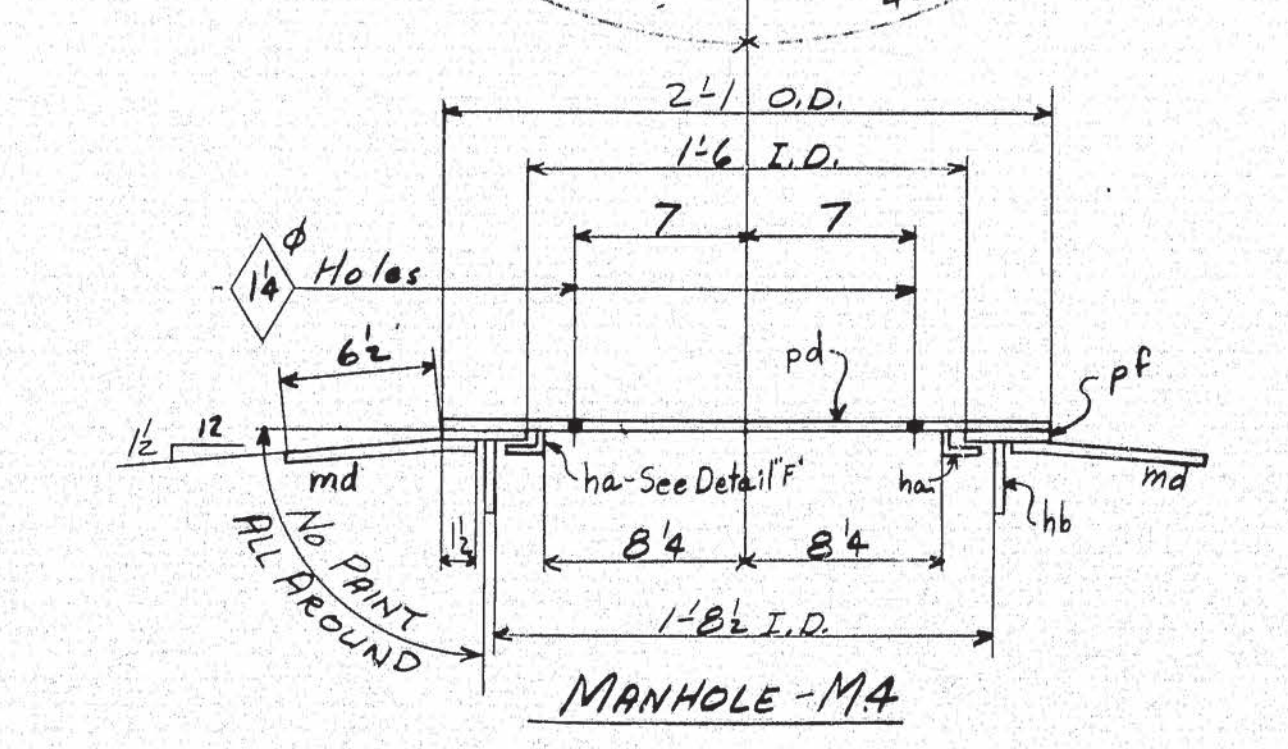
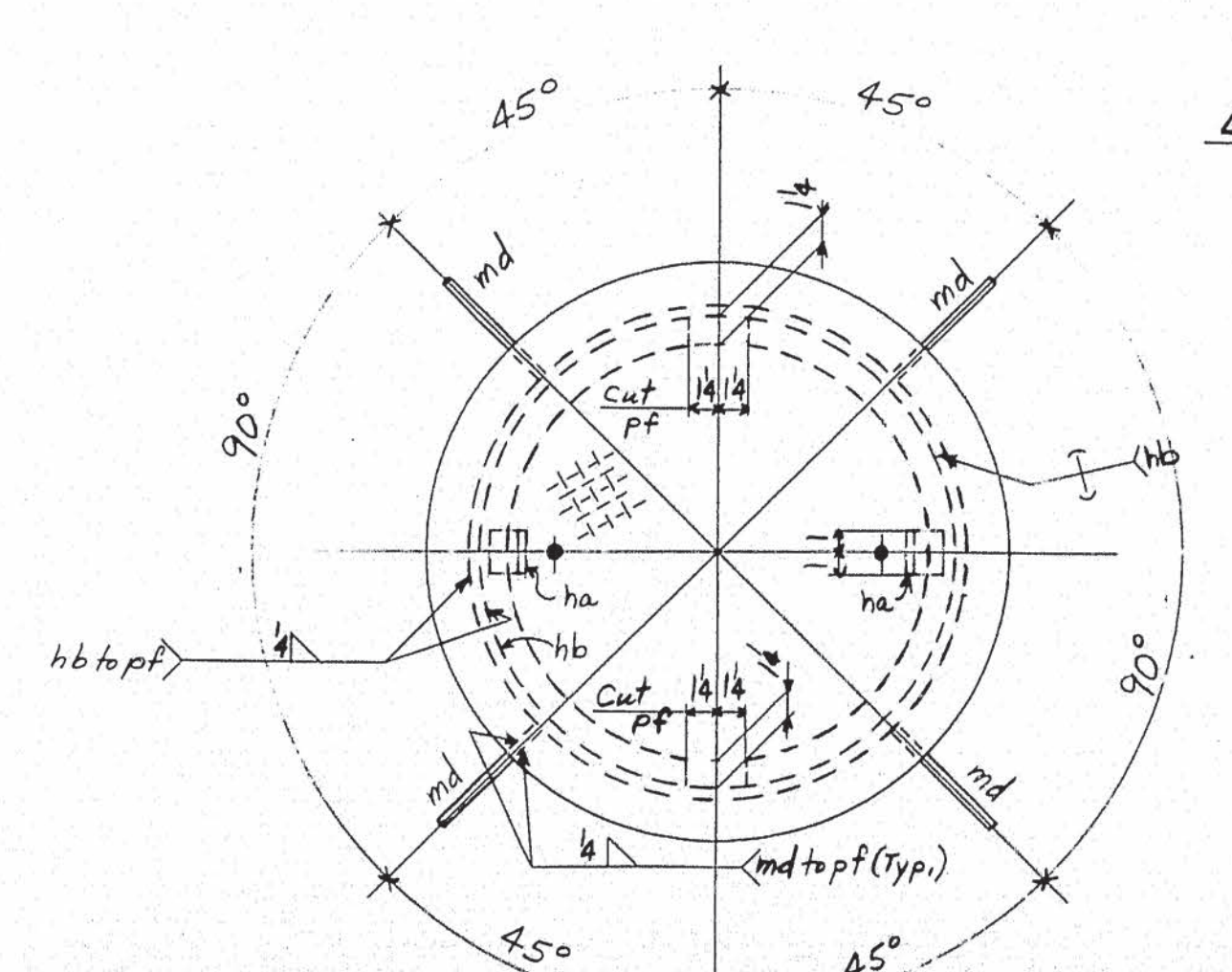
LINE	ITEM	SHAPE	LENGTH	REMARKS	ORDERED	WEIGHT	FOR ONE
					ITEM	PIECE	
1	2 LADDERS	L1				195	
2	4 Bars	3 3/8	11 8	ma		88	
3	24 Rods	3/4	1 3	mb		23	
4	4 L	5 3/4	7	aa		12	
5	8 L	5 3/4	6	ab		21	
6	4 R	6 3/8	1 1	pa		15	
7	4 R	6 3/8	1 1	pb		15	
8	4 R	6 3/8	1 1	pc		17	
9				WELD		3	
10				PAINT		1	
11	2 LADDERS	L2				195	
12	4 Bars			ma		88	
13	24 Rods			mb		23	
14	4 L			aa		12	
15	8 L			ab		21	
16	4 R			pa		15	
17	4 R			pb		15	
18	4 R			pc		17	
19				WELD		3	
20				PAINT		1	
21	2 LADDERS	L3				136	
22	4 Bars	3 3/8	8 7	mc		65	
23	18 Rods			mb		17	
24	4 L			aa		12	
25	4 L			ab		10	
26	8 R			pb		29	
27				WELD		2	
28				PAINT		1	
29	4 MANHOLES	M4				104	
30	4 Chd R	25 3/8	2 1	pd	S300	15	S
31	4 R	25 3/8	2 1	pf		39	S
32	8 R	2 1/4	2 1/4	ha	Bent		S
33	4 R	3 1/4	5 5/8	hb	Bent		S
34	16 Rods	3/8	8	md	Bent		S
35				WELD		3	



DETAIL A
(Typical for all rung Conn.)



Typical Rung Detail
(Peen Ends after Assembly)



NOTES:
SPECIFICATIONS - Maine State Highway Comm.
1905 and Special Provisions
MATERIAL - O.H. Steel - ASTM A7-52T
HOLES - 3/8" Unless Noted
PAINT - Yes, Except as noted
Shop Contact Surfaces - No

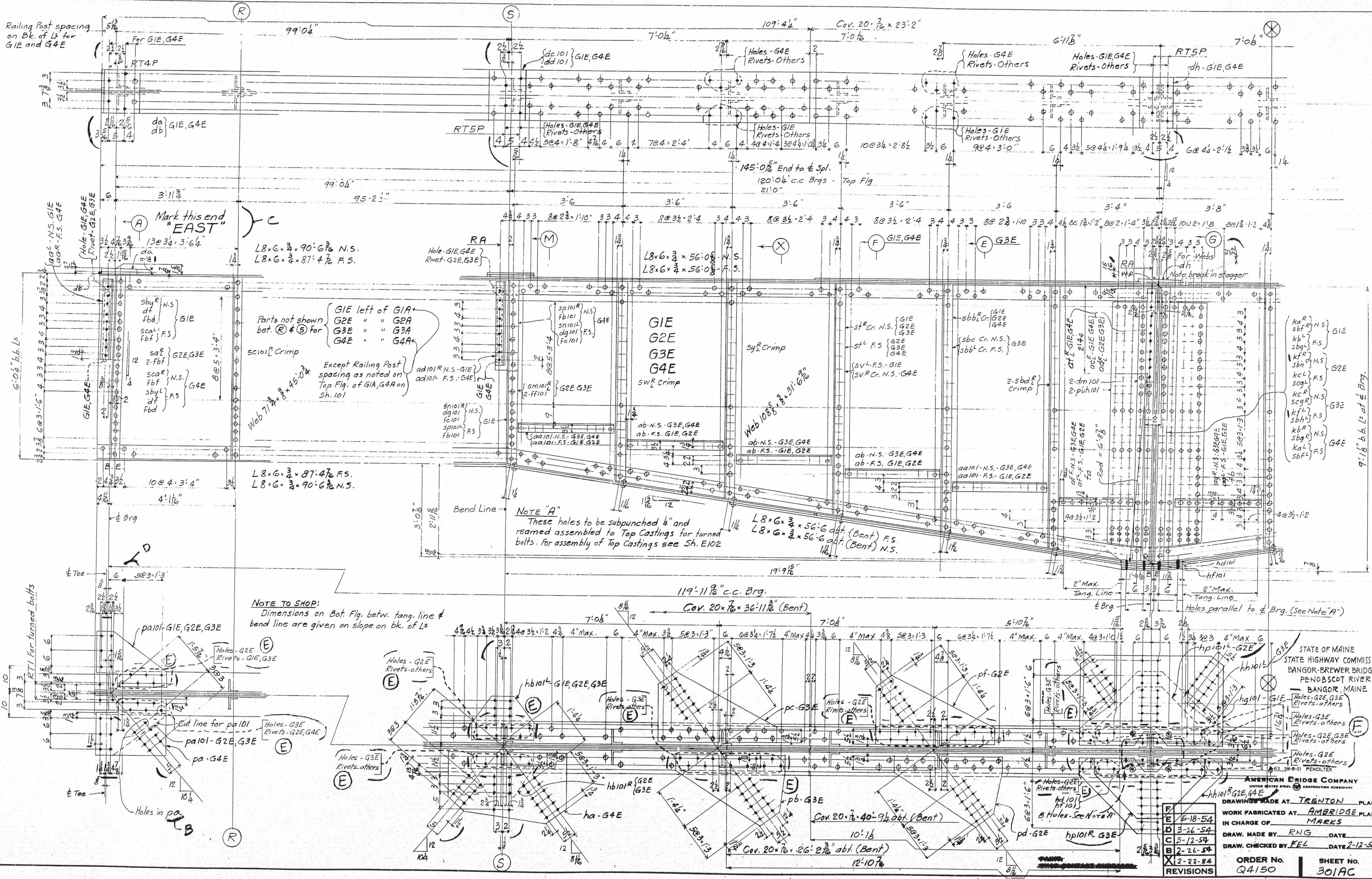
LADDERS & MANHOLES
STATE OF MAINE
STATE HIGHWAY COMMISSION
BANGOR-BREWER BRIDGE
OVER PENOBSCOT RIVER
BANGOR, MAINE

AMERICAN BRIDGE COMPANY
UNITED STATES STEEL CORPORATION SUBSIDIARY

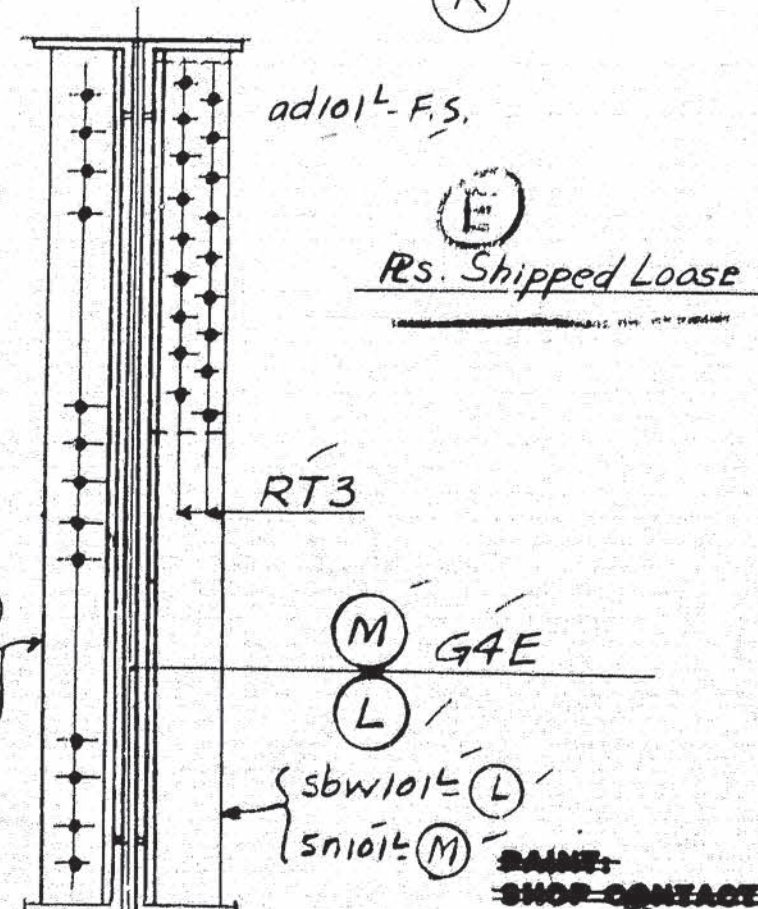
DRAWINGS MADE AT Trenton PLANT
WORK FABRICATED AT Ambridge PLANT
IN CHARGE OF E.B. Marks
DRAWN BY PRY DATE 2-16-54
CHECKED BY FEL DATE 2-18-54
ORDER No. Q4150 SHEET No. 202

AM. BN 203

Welding
62-186



AMERICAN BRIDGE COMPANY UNITED STATES STEEL CORPORATION SUBSIDIARY	
DRAWINGS MADE AT TRENTON PLANT	
WORK FABRICATED AT AMBRIDGE PLANT	
IN CHARGE OF MARKS	
DRAW. MADE BY RNG DATE	
DRAW. CHECKED BY FEL DATE 2-12-54	
ORDER No. Q4150 SHEET No. 301AC	
Weld	



F			
E	18-54		
D	3-12-54		
C	3-4-54		
B	2-16-54		
X	2-22-54		
REVISIONS			

STATE HIGHWAY COMMISSION
BANGOR - BREWER BRIDGE
PENOBSCOT RIVER
BANGOR, MAINE

DE 1500-9-51 PERCHLTEX
AMERICAN BRIDGE COMPANY
 UNITED STATES STEEL CORPORATION SUBSIDIARY

DRAWINGS MADE AT TRENTON PLANT
 WORK FABRICATED AT AMBRIDGE PLANT
 IN CHARGE OF MARKS
 DRAW. MADE BY RNG DATE _____
 DRAW. CHECKED BY FEL DATE 7-12-54

ORDER NO. Q4150 SHEET NO. 301Bc

WELD
62-188

AMERICAN BRIDGE

UNITED STATES STEEL COMPANY

LINE	ITEM	SHAPE	LENGTH	ASSEMBLING	REMARKS	ORDERED	CALCULATED
1							
2							
3							
4	ONE GIRDER - G1E		60513	Do Not Charge			394.8
5	ONE GIRDER - G2E		59914				394.8
6	ONE GIRDER - G3E		60035				394.8
7	ONE GIRDER - G4E		60530	Do Not Charge			394.8
8							
9	4 Wd R 7/8 x 45 0/8		1	12 1/2 x 45 0/8		1055	424.5
10	4 Wd R 7/8 x 43 10/16		1	12 1/2 x 43 10/16		1057	413.2
11	4 Wd R 7/8 x 31 6/16		1000	10 1/2 x 31 6/16		1049	358.9
12	4 Wd R 10/8 x 24 7/8		670	10 1/2 x 24 7/8		1050	291.6
13	8 L 8 x 6 x 90 6/16		2	90 6/16		1087	611.7
14	8 L 8 x 6 x 87 4/16		2	87 4/16		1088	590.4
15	8 L 8 x 6 x 56 0/8		6	56 0/8		1011	378.3
16	8 L 8 x 6 x 56 6/16		Beet 6	57 1/6		1010	381.3
17							
18							
19	3 Cov R 20 x 53 0			U.M. 2		1079	315.2
20	3 Cov R 20 x 48 11/2			U.M. 2		1081	291.1
21	4 Cov R 20 x 77 3			U.M. 8		1073	229.0
22	4 Cov R 20 x 36 1/2			U.M. 8		1083	109.5
23	4 Cov R 20 x 23 2			U.M. 8		1088	68.8
24	4 Cov R 20 x 40 9/16			U.M. 8		1082	120.9
25	4 Cov R 20 x 26 2/4			U.M. 8		1087	77.5
26							
27							
28							
29	2 L 6 x 4 x 8 11/16		114	8 11/16		1040	20.9
30	4 L 6 x 4 x 8 10/16		104	8 10/16		1042	27.5
31							
32	6 L 5 x 3 3/8 x 5 1/2		103	5 1/2		1045	10.9
33	6 L 5 x 3 3/8 x 5 1/2		103	5 1/2		1045	10.9
34							
35	6 L 5 x 3 3/8 x 5 1/2		103	5 1/2		1045	10.9
36	12 L 5 x 3 3/8 x 5 1/2		103	5 1/2		1045	30.5
37	6 L 5 x 3 3/8 x 5 1/2		103	5 1/2		1044	21.5
38	6 L 5 x 3 3/8 x 5 1/2		103	5 1/2		1044	21.3
39	8 L 5 x 3 3/8 x 5 1/2		103	5 1/2		1045	10.5
40	4 L 5 x 3 3/8 x 5 1/2		103	5 1/2		1045	10.2
41	2 L 5 x 3 3/8 x 5 1/2		103	5 1/2		1044	7.2
42	2 L 5 x 3 3/8 x 5 1/2		103	5 1/2		1044	7.2
43	6 L 5 x 3 3/8 x 5 1/2		103	5 1/2		1046	9.0
44	16 L 5 x 3 3/8 x 5 1/2		103	5 1/2		1045	20.9
45	2 L 5 x 3 3/8 x 5 1/2		103	5 1/2		1046	9.0
46	8 L 5 x 3 3/8 x 5 1/2		103	5 1/2		1040	11.5
47	8 L 5 x 3 3/8 x 5 1/2		103	5 1/2		1041	16.7
48	3 L 5 x 3 3/8 x 5 1/2		103	5 1/2		1044	9.6
49	4 L 5 x 3 3/8 x 5 1/2		103	5 1/2		1044	9.6
50	1 L 5 x 3 3/8 x 5 1/2		103	5 1/2		1044	9.6
51	8 L 5 x 3 3/8 x 5 1/2		103	5 1/2		1042	20.4
52	2 L 5 x 3 3/8 x 5 1/2		103	5 1/2		1040	20.9
53							
54	2 L 5 x 3 3/8 x 5 1/2		103	5 1/2		1040	21.0
55	8 L 5 x 3 3/8 x 5 1/2		103	5 1/2		1042	20.2
56	8 L 5 x 3 3/8 x 5 1/2		103	5 1/2		1044	18.8
57	6 L 5 x 3 3/8 x 5 1/2		103	5 1/2		1046	8.9
58							
59	2 L 5 x 3 3/8 x 5 1/2		103	5 1/2		1046	8.9
60	7 L 5 x 3 3/8 x 5 1/2		103	5 1/2		1048	21.6
61	1 L 5 x 3 3/8 x 5 1/2		103	5 1/2		1048	1.4
62	8 L 5 x 3 3/8 x 5 1/2		103	5 1/2		1048	11.4
63	2 L 5 x 3 3/8 x 5 1/2		103	5 1/2		1044	7.2
64	2 L 5 x 3 3/8 x 5 1/2		103	5 1/2		1042	13.6
65	2 L 5 x 3 3/8 x 5 1/2		103	5 1/2		1045	5.2
66	2 L 5 x 3 3/8 x 5 1/2		103	5 1/2		1044	7.2
67	1 L 5 x 3 3/8 x 5 1/2		103	5 1/2		1045	1.0

LIFTING WEIGHT = 32 TONS

STATE OF MAINE
STATE HIGHWAY COMMISSION
BANGOR-BREWER BRIDGE
PENOBSCOT RIVER
BANGOR, MAINE

AMERICAN BRIDGE
UNITED STATES STEEL COMPANY

DRAWINGS MADE AT IRONTON PLANT
WORK FABRICATED AT AMBRIDGE PLANT
IN CHARGE OF E.B. MARKS
DRAWN BY R.N.G. DATE 9/29/53
DRAW CHECKED BY FEL DATE 2-12-54
ORDER NO. Q450 SHEET NO. 301C

LINE	ITEM	SHAPE	LENGTH	ASSEMBLING	REMARKS	ORDERED	CALCULATED
68	2 L 6 x 4 x 3 5 10/16		104	3 5 10/16		1042	13.6
69	2 L 6 x 4 x 3 5 10/16		104	3 5 10/16		1042	13.6
70	3 PL 2 1/2 x 3 5 10/16		104	3 5 10/16		1042	13.6
71	1 PL 2 1/2 x 3 5 10/16		104	3 5 10/16		1042	13.6
72	1 PL 2 1/2 x 3 5 10/16		104	3 5 10/16		1042	13.6
73	1 PL 2 1/2 x 3 5 10/16		104	3 5 10/16		1042	13.6
74	1 PL 2 1/2 x 3 5 10/16		104	3 5 10/16		1042	13.6
75	1 PL 2 1/2 x 3 5 10/16		104	3 5 10/16		1042	13.6
76	1 PL 2 1/2 x 3 5 10/16		104	3 5 10/16		1042	13.6
77	1 PL 2 1/2 x 3 5 10/16		104	3 5 10/16		1042	13.6
78	1 PL 2 1/2 x 3 5 10/16		104	3 5 10/16		1042	13.6
79	1 PL 2 1/2 x 3 5 10/16		104	3 5 10/16		1042	13.6
80	1 PL 2 1/2 x 3 5 10/16		104	3 5 10/16		1042	13.6
81	1 PL 2 1/2 x 3 5 10/16		104	3 5 10/16		1042	13.6
82	1 PL 2 1/2 x 3 5 10/16		104	3 5 10/16		1042	13.6
83	1 PL 2 1/2 x 3 5 10/16		104	3 5 10/16		1042	13.6
84	1 PL 2 1/2 x 3 5 10/16		104	3 5 10/16		1042	13.6
85	1 PL 2 1/2 x 3 5 10/16		104	3 5 10/16		1042	13.6
86	1 PL 2 1/2 x 3 5 10/16		104	3 5 10/16		1042	13.6
87	1 PL 2 1/2 x 3 5 10/16		104	3 5 10/16		1042	13.6
88	1 PL 2 1/2 x 3 5 10/16		104	3 5 10/16		1042	13.6
89	1 PL 2 1/2 x 3 5 10/16		104	3 5 10/16		1042	13.6
90	1 PL 2 1/2 x 3 5 10/16		104	3 5 10/16		1042	13.6
91	1 PL 2 1/2 x 3 5 10/16		104	3 5 10/16		1042	13.6
92	1 PL 2 1/2 x 3 5 10/16		104	3 5 10/16		1042	13.6
93	1 PL 2 1/2 x 3 5 10/16		104	3 5 10/16		1042	13.6
94	1 PL 2 1/2 x 3 5 10/16		104	3 5 10/16		1042	13.6
95	1 PL 2 1/2 x 3 5 10/16		104	3 5 10/16		1042	13.6
96	1 PL 2 1/2 x 3 5 10/16		104	3 5 10/16		1042	13.6
97	1 PL 2 1/2 x 3 5 10/16		104	3 5 10/16		1042	13.6
98	1 PL 2 1/2 x 3 5 10/16		104	3 5 10/16		1042	13.6
99	1 PL 2 1/2 x 3 5 10/16		104	3 5 10/16		1042	13.6
100	1 PL 2 1/2 x 3 5 10/16		104	3 5 10/16		1042	13.6
101	1 PL 2 1/2 x 3 5 10/16		104	3 5 10/16		1042	13.6
102	1 PL 2 1/2 x 3 5 10/16		104	3 5 10/16		1042	13.6
103	1 PL 2 1/2 x 3 5 10/16		104	3 5 10/16		1042	13.6
104	1 PL 2 1/2 x 3 5 10/16		104	3 5 10/16		1042	13.6
105	2 PL 1 1/2 x 3 5 10/16		104	3 5 10/16		1042	13.6
106	2 PL 1 1/2 x 3 5 10/16		104	3 5 10/16		1042	13.6
107	2 PL 1 1/2 x 3 5 10/16		104	3 5 10/16		1042	13.6
108	2 PL 1 1/2 x 3 5 10/16		104	3 5 10/16		1042	13.6
109	2 PL 1 1/2 x 3 5 10/16		104	3 5 10/16		1042	13.6
110	2 PL 1 1/2 x 3 5 10/16		104	3 5 10/16		1042	13.6
111	2 PL 1 1/2 x 3 5 10/16		104	3 5 10/16		1042	13.6
112	2 PL 1 1/2 x 3 5 10/16		104	3 5 10/16		1042	13.6
113	2 PL 1 1/2 x 3 5 10/16		104	3 5 10/16		1042	13.6
114	2 PL 1 1/2 x 3 5 10/16		104	3 5 10/16		1042	13.6
115	2 PL 1 1/2 x 3 5 10/16		104	3 5 10/16		1042	13.6
116	2 PL 1 1/2 x 3 5 10/16		104	3 5 10/16		1042	13.6
117	2 PL 1 1/2 x 3 5 10/16		104	3 5 10/16		1042	13.6
118	2 PL 1 1/2 x 3 5 10/16		104	3 5 10/16		1042	13.6
119	2 PL 1 1/2 x 3 5 10/16		104	3 5 10/16		1042	13.6
120	2 PL 1 1/2 x 3 5 10/16		104	3 5 10/16		1042	13.6
121	2 PL 1 1/2 x 3 5 10/16		104	3 5 10/16		1042	13.6
122	2 PL 1 1/2 x 3 5 10/16		104	3 5 10/16		1042	13.6
123	2 PL 1 1/2 x 3 5 10/16		104	3 5 10/16		1042	13.6
124	2 PL 1 1/2 x 3 5 10/16		104	3 5 10/16		1042	13.6
125	2 PL 1 1/2 x 3 5 10/16		104	3 5 10/16		1042	13.6
126	2 PL 1 1/2 x 3 5 10/16		104	3 5 10/16		1042	13.6
127	2 PL 1 1/2 x 3 5 10/16		104	3 5 10/16		1042	13.6
128	2 PL 1 1/2 x 3 5 10/16		104	3 5 10/16		1042	13.6
129	2 PL 1 1/2 x 3 5 10/16		104	3 5 10/16		1042	13.6
130	2 PL 1 1/2 x 3 5 10/16		104	3 5 10/16		1042	13.6

NOTES:
SPECIFICATIONS: Maine State Highway Commission 1945 and Special Provisions
MATERIAL: O.H. Steel A.S.T.M. A7-52T
RIVETS: 7/8" HOLES: 1 1/8" Unless noted.
WORKMANSHIP: Holes in material thicker than the diameter of the rivet shall be drilled.
Holes in main material, including holes of splices, in bearing stiffeners and splice plates to be subpunched or subdrilled 1/4" and reamed to size.
Holes marked RT to be subpunched or subdrilled 1/4" and reamed to size to a metal template.
Holes marked RA to be subpunched or subdrilled 1/4" and reamed to size while connecting members are assembled to cambered position. (See Sh. E102)
Connecting members to be matchmarked.
Fillers and splice plates under stiffeners to fit within 1/8" of flange angles.
B.E. indicates bearing end of stiffeners.
PRINT: Yes, except as shown in Section X
SHOP CONTACT SURFACES: No

WORK WITH SHEET 101

PRINT: SHOP CONTACT SURFACES

M. B.

62-189

NOTE:
Finger Plates on Dams Framing
opposite each other must be
cut from one plate to insure
correct fitting of Fingers.
Before cutting Finger Plates
groove plates as shown in Detail

Width of \bar{R} before cutting finger R_s

DETAIL "a"

STATE OF MAINE
STATE HIGHWAY COMMISSION
BANGOR-BREWER BRIDGE
OVER PENOBSCOT RIVER
BANGOR, MAINE
D-88 1500 3-43 PENCIL/EX
AMERICAN BRIDGE
DIVISION
UNITED STATES STEEL CORPORATION

DRAWINGS MADE AT TRENTON PLANT
WORK FABRICATED AT AMBRIDGE PLANT
IN CHARGE OF E.B. MARKS
DRAW. MADE BY THRC DATE 10-20-53
DRAW. CHECKED BY SLR DATE 2-15-54

ORDER No. Q4150 SHEET No. 30.2 AB

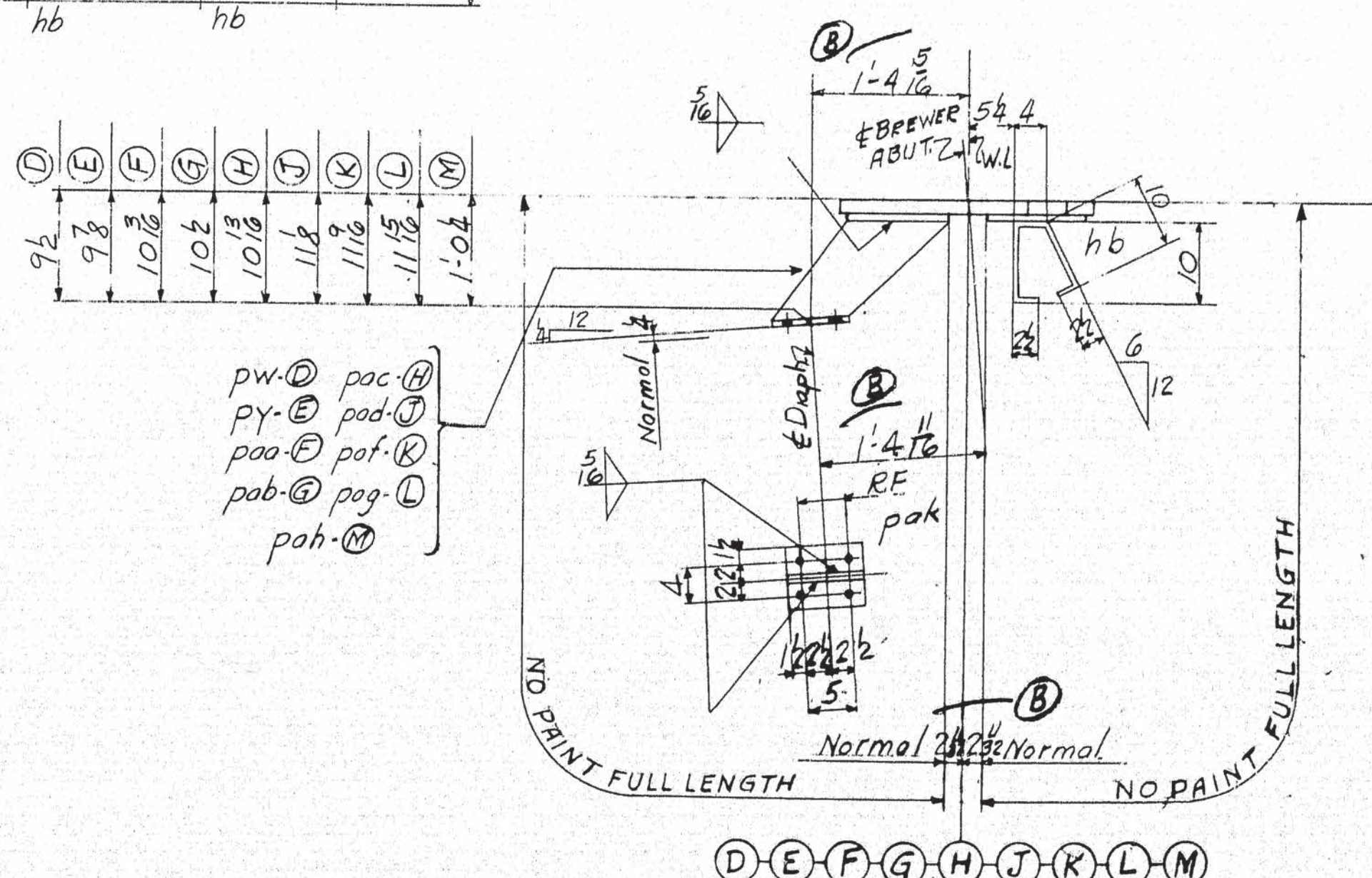
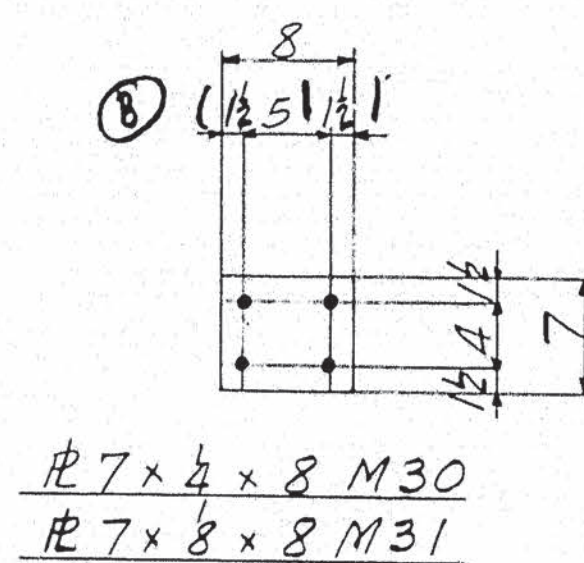
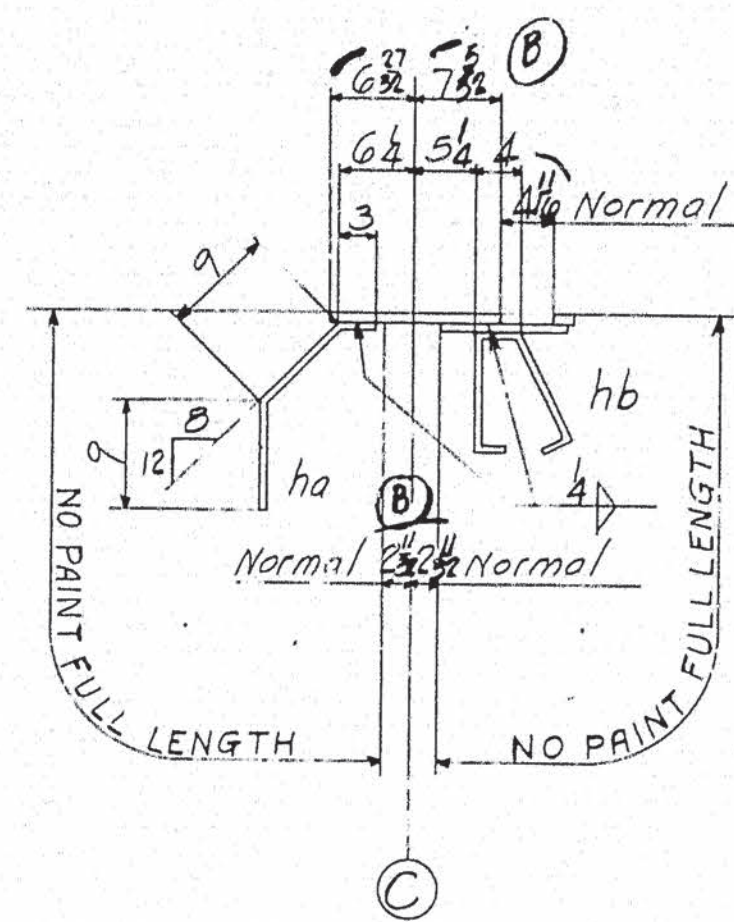
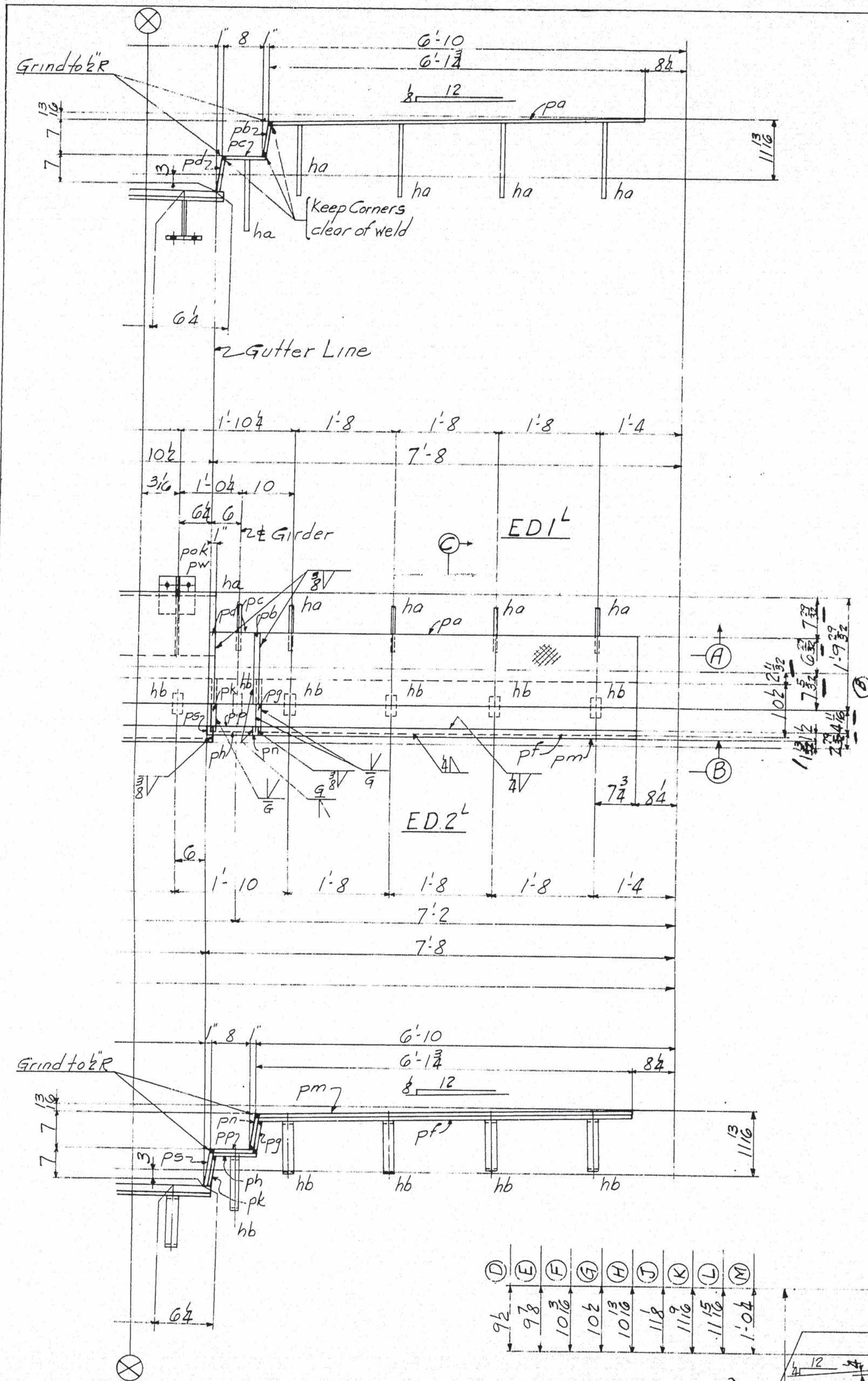
PAINT:
SHOP CONTACT SURFACES:

F	
E	
D	
C	
B	
X	
REVISIONS	

Abstract

WELD
62-196

LINE	ITEM	MATERIAL	SHAPE	LENGTH	ASSEMBLY MARK	REMARKS	ORDERED	RIVETS		RIVETS		RIVETS		BOLTS		BOLTS		NUT	HEAD	BOLT	DIA	GRIP	NUT	HEAD	BOLT	DIA	GRIP	NUT	HEAD	BOLT	DIA	GRIP	NUT	HEAD	BOLT	DIA	GRIP	NUT	HEAD	BOLT	DIA	GRIP	NUT	HEAD	BOLT	DIA	GRIP	NUT	HEAD	BOLT	DIA	GRIP	NUT	HEAD	BOLT	DIA	GRIP	NUT	HEAD	BOLT	DIA	GRIP	NUT	HEAD	BOLT	DIA	GRIP	NUT	HEAD	BOLT	DIA	GRIP	NUT	HEAD	BOLT	DIA	GRIP	NUT	HEAD	BOLT	DIA	GRIP	NUT	HEAD	BOLT	DIA	GRIP	NUT	HEAD	BOLT	DIA	GRIP	NUT	HEAD	BOLT	DIA	GRIP	NUT	HEAD	BOLT	DIA	GRIP	NUT	HEAD	BOLT	DIA	GRIP	NUT	HEAD	BOLT	DIA	GRIP	NUT	HEAD	BOLT	DIA	GRIP	NUT	HEAD	BOLT	DIA	GRIP	NUT	HEAD	BOLT	DIA	GRIP	NUT	HEAD	BOLT	DIA	GRIP	NUT	HEAD	BOLT	DIA	GRIP	NUT	HEAD	BOLT	DIA	GRIP	NUT	HEAD	BOLT	DIA	GRIP	NUT	HEAD	BOLT	DIA	GRIP	NUT	HEAD	BOLT	DIA	GRIP	NUT	HEAD	BOLT	DIA	GRIP	NUT	HEAD	BOLT	DIA	GRIP	NUT	HEAD	BOLT	DIA	GRIP	NUT	HEAD	BOLT	DIA	GRIP	NUT	HEAD	BOLT	DIA	GRIP	NUT	HEAD	BOLT	DIA	GRIP	NUT	HEAD	BOLT	DIA	GRIP	NUT	HEAD	BOLT	DIA	GRIP	NUT	HEAD	BOLT	DIA	GRIP	NUT	HEAD	BOLT	DIA	GRIP	NUT	HEAD	BOLT	DIA	GRIP	NUT	HEAD	BOLT	DIA	GRIP	NUT	HEAD	BOLT	DIA	GRIP	NUT	HEAD	BOLT	DIA	GRIP	NUT	HEAD	BOLT	DIA	GRIP	NUT	HEAD	BOLT	DIA	GRIP	NUT	HEAD	BOLT	DIA	GRIP	NUT	HEAD	BOLT	DIA	GRIP	NUT	HEAD	BOLT	DIA	GRIP	NUT	HEAD	BOLT	DIA	GRIP	NUT	HEAD	BOLT	DIA	GRIP	NUT	HEAD	BOLT	DIA	GRIP	NUT	HEAD	BOLT	DIA	GRIP	NUT	HEAD	BOLT	DIA	GRIP	NUT	HEAD	BOLT	DIA	GRIP	NUT	HEAD	BOLT	DIA	GRIP	NUT	HEAD	BOLT	DIA	GRIP	NUT	HEAD	BOLT	DIA	GRIP	NUT	HEAD	BOLT	DIA	GRIP	NUT	HEAD	BOLT	DIA	GRIP	NUT	HEAD	BOLT	DIA	GRIP	NUT	HEAD	BOLT	DIA	GRIP	NUT	HEAD	BOLT	DIA	GRIP	NUT	HEAD	BOLT	DIA	GRIP	NUT	HEAD	BOLT	DIA	GRIP	NUT	HEAD	BOLT	DIA	GRIP	NUT	HEAD	BOLT	DIA	GRIP	NUT	HEAD	BOLT	DIA	GRIP	NUT	HEAD	BOLT	DIA	GRIP	NUT	HEAD	BOLT	DIA	GRIP	NUT	HEAD	BOLT	DIA	GRIP	NUT	HEAD	BOLT	DIA	GRIP	NUT	HEAD	BOLT	DIA	GRIP	NUT	HEAD	BOLT	DIA	GRIP	NUT	HEAD	BOLT	DIA	GRIP	NUT	HEAD	BOLT	DIA	GRIP	NUT	HEAD	BOLT	DIA	GRIP	NUT	HEAD	BOLT	DIA	GRIP	NUT	HEAD	BOLT	DIA	GRIP	NUT	HEAD	BOLT	DIA	GRIP	NUT	HEAD	BOLT	DIA	GRIP	NUT	HEAD	BOLT	DIA	GRIP	NUT	HEAD	BOLT	DIA	GRIP	NUT	HEAD	BOLT	DIA	GRIP	NUT	HEAD	BOLT	DIA	GRIP	NUT	HEAD	BOLT	DIA	GRIP	NUT	HEAD	BOLT	DIA	GRIP	NUT	HEAD	BOLT	DIA	GRIP	NUT	HEAD	BOLT	DIA	GRIP	NUT	HEAD	BOLT	DIA	GRIP	NUT	HEAD	BOLT	DIA	GRIP	NUT	HEAD	BOLT	DIA	GRIP	NUT	HEAD	BOLT	DIA	GRIP	NUT	HEAD	BOLT	DIA	GRIP	NUT	HEAD	BOLT	DIA	GRIP	NUT	HEAD	BOLT	DIA	GRIP	NUT	HEAD	BOLT	DIA	GRIP	NUT	HEAD	BOLT	DIA	GRIP	NUT	HEAD	BOLT	DIA	GRIP	NUT	HEAD	BOLT	DIA	GRIP	NUT	HEAD	BOLT	DIA	GRIP	NUT	HEAD	BOLT	DIA	GRIP	NUT	HEAD	BOLT	DIA	GRIP	NUT	HEAD	BOLT	DIA	GRIP	NUT	HEAD	BOLT	DIA	GRIP	NUT	HEAD	BOLT	DIA	GRIP	NUT	HEAD	BOLT	DIA	GRIP	NUT	HEAD	BOLT	DIA	GRIP
------	------	----------	-------	--------	---------------	---------	---------	--------	--	--------	--	--------	--	-------	--	-------	--	-----	------	------	-----	------	-----	------	------	-----	------	-----	------	------	-----	------	-----	------	------	-----	------	-----	------	------	-----	------	-----	------	------	-----	------	-----	------	------	-----	------	-----	------	------	-----	------	-----	------	------	-----	------	-----	------	------	-----	------	-----	------	------	-----	------	-----	------	------	-----	------	-----	------	------	-----	------	-----	------	------	-----	------	-----	------	------	-----	------	-----	------	------	-----	------	-----	------	------	-----	------	-----	------	------	-----	------	-----	------	------	-----	------	-----	------	------	-----	------	-----	------	------	-----	------	-----	------	------	-----	------	-----	------	------	-----	------	-----	------	------	-----	------	-----	------	------	-----	------	-----	------	------	-----	------	-----	------	------	-----	------	-----	------	------	-----	------	-----	------	------	-----	------	-----	------	------	-----	------	-----	------	------	-----	------	-----	------	------	-----	------	-----	------	------	-----	------	-----	------	------	-----	------	-----	------	------	-----	------	-----	------	------	-----	------	-----	------	------	-----	------	-----	------	------	-----	------	-----	------	------	-----	------	-----	------	------	-----	------	-----	------	------	-----	------	-----	------	------	-----	------	-----	------	------	-----	------	-----	------	------	-----	------	-----	------	------	-----	------	-----	------	------	-----	------	-----	------	------	-----	------	-----	------	------	-----	------	-----	------	------	-----	------	-----	------	------	-----	------	-----	------	------	-----	------	-----	------	------	-----	------	-----	------	------	-----	------	-----	------	------	-----	------	-----	------	------	-----	------	-----	------	------	-----	------	-----	------	------	-----	------	-----	------	------	-----	------	-----	------	------	-----	------	-----	------	------	-----	------	-----	------	------	-----	------	-----	------	------	-----	------	-----	------	------	-----	------	-----	------	------	-----	------	-----	------	------	-----	------	-----	------	------	-----	------	-----	------	------	-----	------	-----	------	------	-----	------	-----	------	------	-----	------	-----	------	------	-----	------	-----	------	------	-----	------	-----	------	------	-----	------	-----	------	------	-----	------	-----	------	------	-----	------	-----	------	------	-----	------	-----	------	------	-----	------	-----	------	------	-----	------	-----	------	------	-----	------	-----	------	------	-----	------	-----	------	------	-----	------	-----	------	------	-----	------	-----	------	------	-----	------	-----	------	------	-----	------	-----	------	------	-----	------	-----	------	------	-----	------	-----	------	------	-----	------	-----	------	------	-----	------	-----	------	------	-----	------	-----	------	------	-----	------	-----	------	------	-----	------	-----	------	------	-----	------	-----	------	------	-----	------	-----	------	------	-----	------	-----	------	------	-----	------	-----	------	------	-----	------	-----	------	------	-----	------	-----	------	------	-----	------	-----	------	------	-----	------	-----	------	------	-----	------	-----	------	------	-----	------	-----	------	------	-----	------	-----	------	------	-----	------	-----	------	------	-----	------	-----	------	------	-----	------	-----	------	------	-----	------	-----	------	------	-----	------



NOTES:
 Specifications: Maine State Highway Comm. 1945
 & Special Provisions
 Material: A.H. Steel ASTM A7-52T
 Holes: 1/8"
 Workmanship:
 Holes marked RF to be subpunched & and reamed to size in the field.

LINE	ITEM	MATERIAL	SHAPE	LENGTH	ASSEMBLY MARK	REMARKS	ORDERED	ITEM	CALCULATED WEIGHT FOR ONE RAMP, PIER
1									
2									
3									
4									
5									
6									
7									
8									
9									
10									
11									
12									
13									
14									
15									
16									
17									
18									
19									
20									
21									
22									
23									
24									
25									
26									
27									
28									
29									
30									
31									
32									
33									
34									
35									
36									
37									
38									
39									
40									
41									
42									
43									
44									
45									
46									
47									
48									
49									
50									
51									
52									
53									
54									
55									
56									
57									

EXPANSION DAMS ED1L-ED2L-ED3-ED4

STATE OF MAINE
 STATE HIGHWAY COMMISSION
 BANGOR-BREWER BRIDGE
 OVER PENOBSCOT RIVER
 BANGOR, MAINE

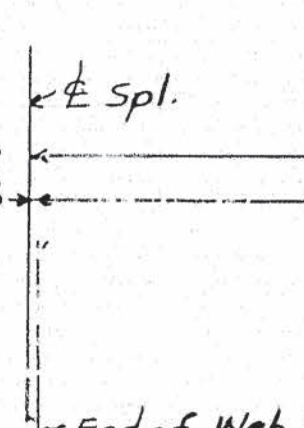
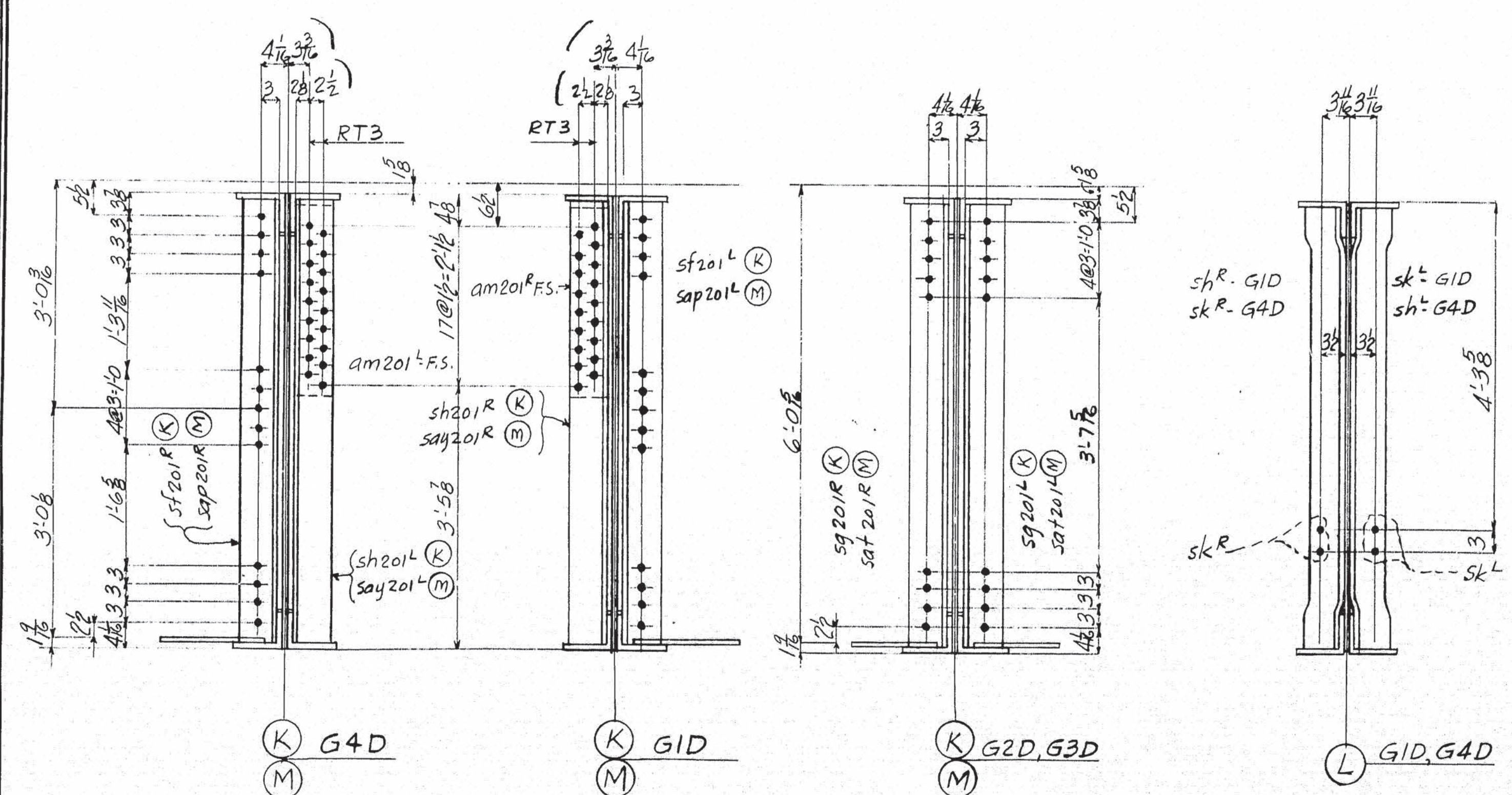
AMERICAN BRIDGE

DRAWINGS MADE AT TRENTON PLANT
 WORK FABRICATED AT AMBRIDGE PLANT
 IN CHARGE OF E.B. MARKS
 DRAW. MADE BY: S.H.D. DATE: 10-23-33
 DRAW. CHECKED BY: S.H.D. DATE: 2-15-34
 ORDER No. Q4150 SHEET No. 302B

PAINT: Yes
 SHOP CONTACT SURFACES: No

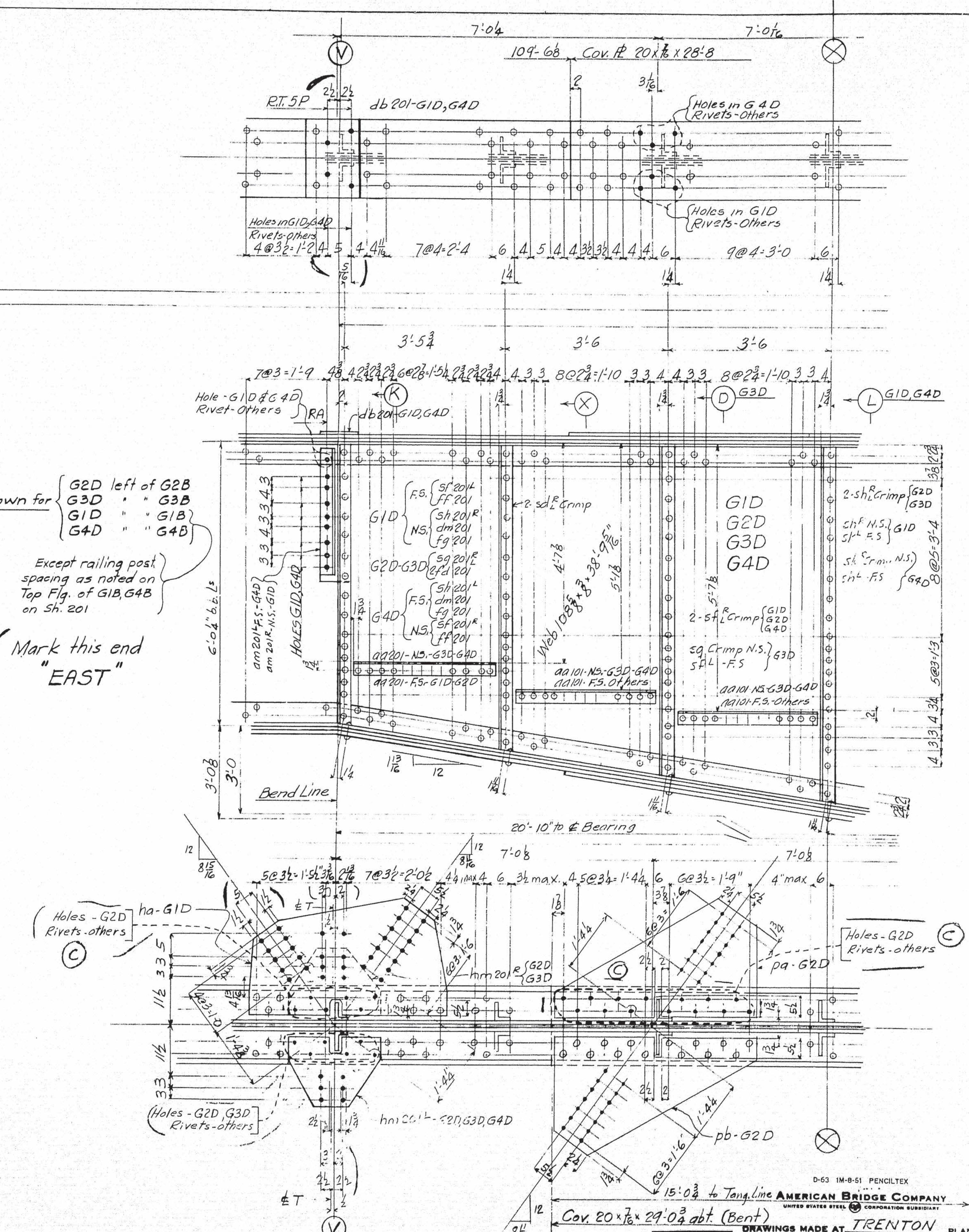
MR. 303

62-191 Weld



Except railing pos.
spacing as noted on
Top Flg. of GIB, G4
on Sh. 201

B — Mark this end
"EAST"



STATE OF MAINE
STATE HIGHWAY COMMISSION
BANGOR BREWER BRIDGE
PENOBSCOT RIVER
BANGOR MAINE

15'-0" $\frac{3}{4}$ to Tang Line
29'-0" dbt (Bent)

D-63 1M-B-51 PENCILTER

AMERICAN BRIDGE COMPANY
UNITED STATES STEEL CORPORATION SUBSIDIARY

DRAWINGS MADE AT TRENTON PLANT

WORK FABRICATED AT AMBRIDGE PLANT

IN CHARGE OF E.B. MARKS

DRAW. MADE BY _____ DATE 2-18-54

DRAW. CHECKED BY FEL DATE 2-18-54

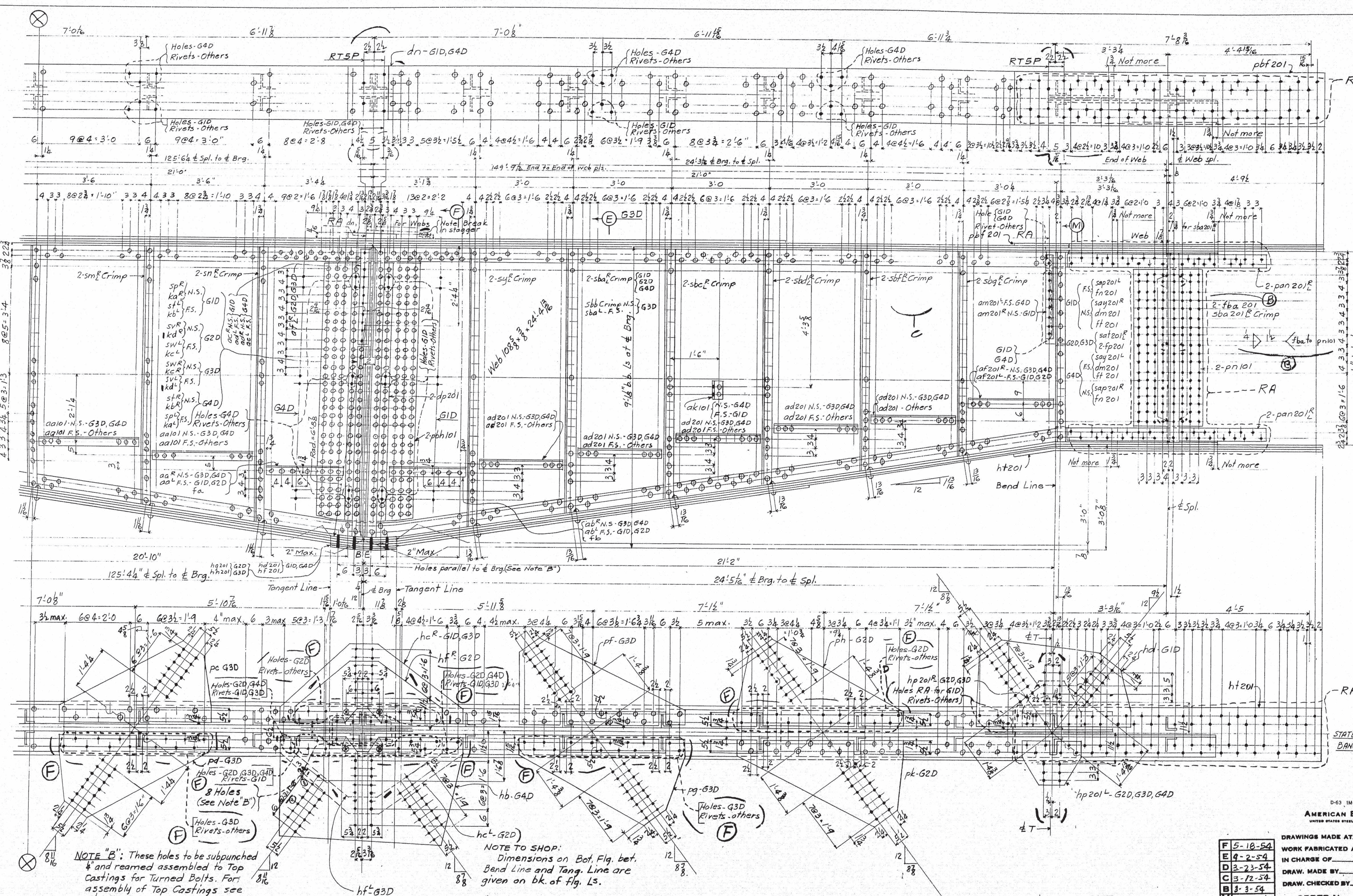
F	
E	
D	
C	5-18-54
B	3-12-54
<input checked="" type="checkbox"/> A	2-22-54
REVISIONS	

ORDER No. 04150

SHEET No. 20195

Adt. Bill WELD

62-192



NOTE "B": These holes to be subpunched & reamed assembled to Top Castings for Turned Bolts. For assembly of Top Castings see Sh. E102

NOTE TO SHOP: Dimensions on Bot. Flg. bet. Bend Line and Tang. Line are given on bk. of Flg. Ls.

STATE OF MAINE
STATE HIGHWAY COMMISSION
DANFORTH-BREWER BRIDGE
PENOBSCOT RIVER
BANGOR, MAINE

D-63 1M-8-51 PENCIL/TEX	
AMERICAN BRIDGE COMPANY UNITED STATES STEEL CORPORATION SUBSIDIARY	
DRAWINGS MADE AT TRENTON PLANT	
WORK FABRICATED AT AMERIDGE PLANT	
IN CHARGE OF MARKS	
DRAW. MADE BY RNS DATE	
DRAW. CHECKED BY FEL DATE 2-18-54	
ORDER NO. Q4150 SHEET NO. 401BC	
REVISIONS	
F 5-18-54	
E 9-2-54	
D 3-23-54	
C 3-12-54	
B 3-3-54	
X 2-22-54	

62-193



NOTE:

- 1) Specifications: Maine State Highway 200mm. RIV. G30-13 10
1945 and Special Provision. RIV. G30-13 10
- 2) Material: O.H. Steel A3T.M. A7-527 RIV. G40-1268
- 3) Rivets: 8" $\frac{3}{4}$ " WELD G30-2
- 4) Holes: $\frac{3}{4}$ " $\frac{1}{2}$ " Unless Noted PRINT G10-263
- 5) Workmanship: G20 252
G30 254
PRINT G40 263

Holes in material thicker than the diameter of the rivet shall be drilled..

Holes in main material, including holes at splices in bearing stiffeners, and splice plates to be subpunched or subdrilled $\frac{1}{4}$ " and reamed to size.

Holes marked RT to be subpunched $\frac{1}{4}$ " and reamed to size to a metal templet.

Holes marked RA to be subpunched or subdrilled $\frac{1}{4}$ " and reamed to size while connecting members are assembled to cambered position.

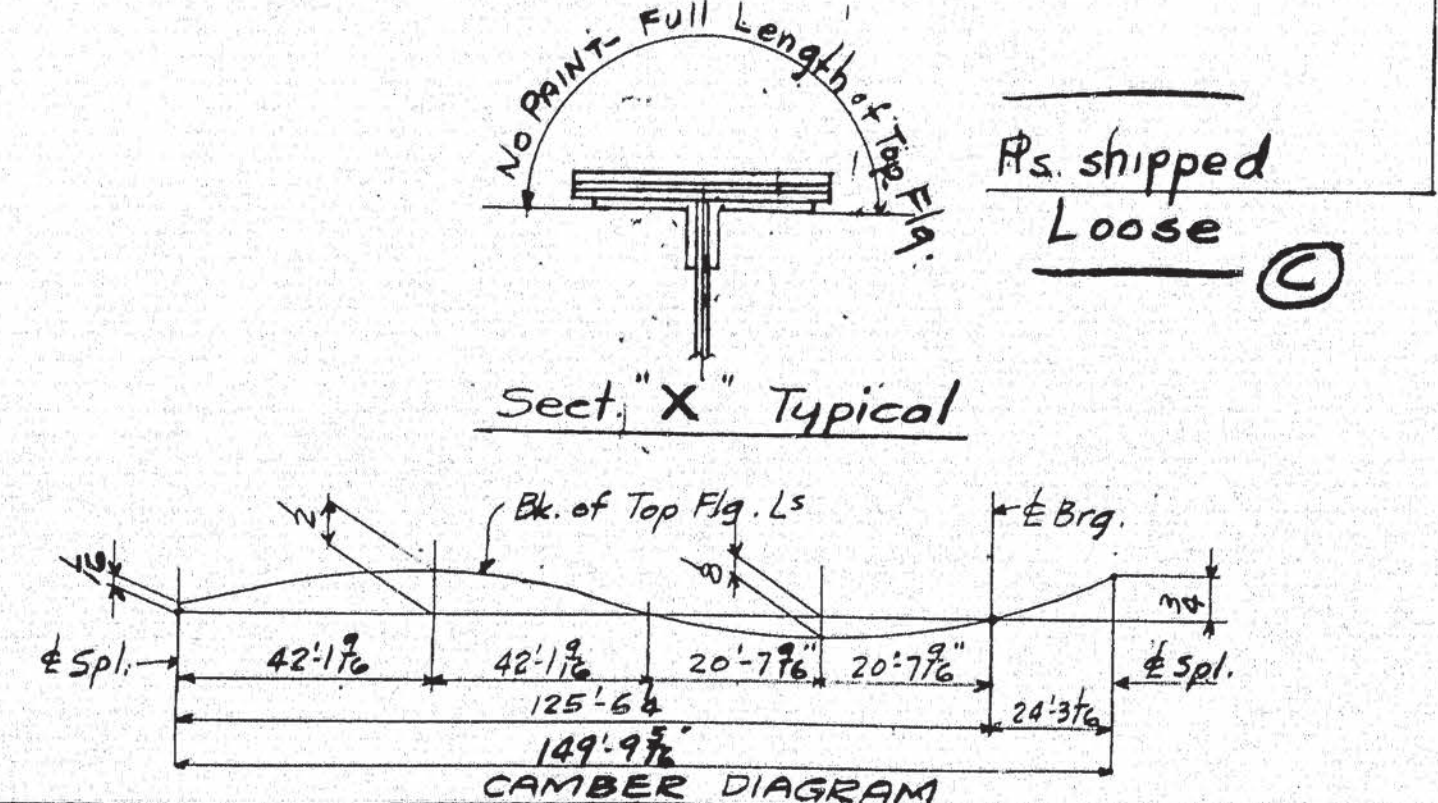
(See Sheet E102). Connecting members to be matchmarked.

Fillers and splice plates under stiffeners to fit within $\frac{1}{8}$ " of flange angles.

B.E. indicates bearing end of stiffeners.

PAINT: Yes, except as shown in Section "X"

SHOP CONTACT SURFACES: - No



DUCT															
68	2	L	6	4	3	5	102	cap201	L-GID R-G4D	1	35'-6	1044		71	
69	2	L	6	4	3	5	102	cap201	R-GID		35'-6	1044		72	
70	4	L	5	32	7/8	5	102	cap201	R-GID		40'-0	1045		101	
71	8	L	5	32	7/8	5	101	cap201	G2D,G3D	1	40'-0	1045		102	
72	3	R	174	9/16	1	112			Crimp	2	40'-0	1045			
73	3	R	174	5/16	1	112			Pf 201 G2D					WT LINE	
74	24	Pls	252	3/8	5	0	pn201		Pf 201 G2D					WT LINE	
75	8	Pls	20	7/8	14	3	pa201	UM	2	20'-1	1063		973		
76	16	Pls	5	3/8	6	112	pw201	Chamfer					1089		
77	16	Pls	5	3/8	5	112	pn201	Chamfer	18				354		
78	4	Pls	20	7/8	9	44	pb201	UM	7	38'-1	1068		281		
79	8	Pls	35	3/8	8	16	pbh101		8	32'-5	1062		351		
80	1	R	174	9/16	2	2			pb201 G2D				71		
81	1	Pl	222	7/8	2	53			pa 201 G3D				WT LINE		
82	1	Pl	222	7/8	2	4	pb201		G3D	18			39		
83	1	Pl	222	7/8	2	53	pc201		G3D	21			38		
84	1	Pl	222	7/8	2	62			pd 201 G2D				40		
85	9	Pl	174	7/8	1	112	pf201		G2D,G3D	21			40		
86	3	Pl	222	3/8	3	8	pg201		G2D	15			24		
87	5	Pl	222	3/8	2	4	ph201		G2D	5/134			73		
88	1	Pl	222	7/8	2	73			pk 201 G2D				40		
89	1	Pl	222	7/8	2	104			pm 201 G3D				40		
90	1	Pl	222	7/8	2	6	pn201		G3D	28	AS		40		
91	1	Pl	222	7/8	2	73			pp 201 G3D				40		
92	1	Pl	222	7/8	2	73			pt 201 G2D				40		
93	1	Pl	222	7/8	2	73			pv 201 G2D				40		
94	1	Pl	222	7/8	2	73			py 201 G3D				40		
95	1	Pl	222	7/8	3	83	pb201		G4D				83		
96	3	Pl	174	7/8	2	2	pd201		G2D,G3D				30		
97	1	Pl	222	7/8	3	53	pa201		G2D				63		
98	1	Pl	222	7/8	3	5	pd201		G3D				60		
99	1	Pl	222	7/8	3	9	pa201		G2D				66		
100	1	Pl	222	7/8	3	83			py 201 G2D				69		
101	7	Pl	92	7/8	1	43			pa201 G3D				69		
102	1	Pl	306	3/8	4	23			pa G2D				86		
103	1	Pl	306	3/8	4	23	pb		G2D				86		
104	1	Pl	306	3/8	4	63	pc		G3D				91		
105	1	Pl	306	3/8	4	63			pd G3D				91		
106	1	Pl	306	3/8	5	24	pf		G3D				110		
107	1	Pl	306	3/8	5	24			pg G3D				107		
108	1	Pl	306	3/8	5	24			ph G2D				108		
109	1	Pl	306	3/8	5	24	pk		G2D				110		
110	1	R	174	9/16	2	2			pb201 G3D				WT LINE		
111	2	Fils	6	7/8	4	34	dw201		G2D,G3D				38		
112	6	Fils	20	3/8	1	03	dc101		G1D,G4D				157		
113	8	Fils	20	7/8	1	03	dc101		G1D,G4D				123		
114	2	Fils	20	7/8	1	03	dc201		G1D,G4D				29		
115	4	Fils	20	7/8	11	63	dc201		G1D,G4D				294		
116	2	Fils	20	7/8	1	03	dc201		G1D,G4D				34		
117	2	Fils	20	7/8	1	03	dc201		G1D,G4D				65		
118	8	Fils	85	3/8	2	54	dm101		G1D,G4D				123		
119	4	Fils	85	3/8	2	54	dm201		G1D,G4D				413		
120	8	Fils	15	6	8	172	dp201						3		
121	(2)	Fils	6	7/8	4	34	dt201		G1D,G4D				37		
122	2	Fils	6	7/8	4	14	dy201		G2D,G3D				8		
123	8	Fils	5	3/8	1	104	dh201						21		
124	8	Fils	5	3/8	5	0	dk201						WT LINE		
125	1	Pl	222	7/8	2	13	FIN1		K9201 G2D				13		
126	2	L	6	4	3	5	101	kd201	R-GID	25'-0	1039		161		
127	2	L	6	4	3	5	101	kd201	R-GID				161		
128	2	L	6	4	3	5	101	kd201	R-GID	25'-0	1039		161		
129	2	L	6	4	3	5	101	kd201	R-GID				161		
130	2	Pl	6	7/8	6	33	KC201	FIN1 G1D,G4D					56		
131	(2)	Pl	194	7/8	1	112	KF201	FIN1 G1D,G4D					51		
132	1	Pl	222	7/8	2	13	FIN1	K9201 G3D					65		
133	2	Pl	194	7/8	1	112	KK201	FIN1 G2D,G3D					51		
134	8	L	6	4	3	2	63	ak101	R-GID	48'-0	1043		116		
135	8	L	4	32	3/8	6	ak101	G1D,G4D					58		
136	4	L	6	4	3	2	63	am201	R-GID	4	40'-0	1043		24	
137	4	L	4	32	3/8	3	16	aa201	R-GID		40'-0	1019		18	
138	4	L	4	32	3/8	2	47	aa201	R-GID,G2D		40'-0	1019		19	
139	4	L	4	32	3/8	2	56	ab201	R-GID,G2D		40'-0	1019		101	
140	20	L	4	32	3/8	2	76	ad201	R-GID,G2D		40'-0	1019			

LIFTING WEIGHT = 35 TONS

Work with sheet 201

LINE	Total No. of Pieces in the Order	MATERIAL		ASSEMBLING MARK	REMARKS	ORDERED		CALCULATED WEIGHT FOR ORDER
		SHAPE	LENGTH			ITEM	QUANTITY	
1								
2								
3		ONE	CARDER - G 1 D		Do NOT CHARGE	3034		66009
4		ONE	CARDER - G 1 D			3034		630107
5		ONE	CARDER - G 1 D			3034		630272
6		ONE	CARDER - G 1 D		Do NOT CHARGE	3034		65745
7								
8		1	W66 R 7 1/8 8 48 3 3/8					4545
9		1	W66 R 7 1/8 8 38 4 1/8					3611
10		1	W66 R 10 8 38 9 1/8					42666
11		1	W66 R 10 8 38 9 1/8					28633
12		1	L 8 6 3 86 8 3/8	*				117011
13		1	L 8 6 3 63 8 3/8	*				49116
14		1	L 8 6 3 63 5 1/8	*				49553
15		1	Cov R 20 3/8 40 10 1/8	*				36119
16		1	Cov R 20 3/8 61 2 1/8	*				25899
17		1	Cov R 20 3/8 61 2 1/8	*				18114
18		1	Cov R 20 3/8 61 7 3/8	*				26111
19		1	Cov R 20 3/8 61 7 3/8	*				18228
20		1	Cov R 20 3/8 55 0 7/8	*				18611
21		1	Cov R 20 3/8 55 0 7/8	*				16322
22		1	Cov R 20 3/8 55 6 4 1/8	*				18799
23		1	Cov R 20 3/8 55 6 4 1/8	*				16466
24		1	Cov R 20 3/8 28 8	*				8552
25		1	Cov R 20 3/8 29 0 3/8	*				8655
26								
27								
28								
29		55	L 5 3/8 3/8 5 103					776333
30		59	L 5 3/8 3/8 5 103					776333
31		1	L 5 3/8 3/8 5 103					52
32		4	L 5 3/8 3/8 5 103					2099
33		8	L 6 4 8 5 103					2846
34		8	L 6 4 8 5 103					2846
35		16	L 5 3/8 3/8 5 103					4017
36		4	L 5 3/8 3/8 5 103					52
37		4	L 5 3/8 3/8 5 103					52
38		4	L 5 3/8 3/8 5 103					52
39		4	L 5 3/8 3/8 5 103					52
40		14	L 5 3/8 3/8 5 103					2099
41		15	L 5 3/8 3/8 5 103					2099
42		1	L 5 3/8 3/8 5 103					52
43		2	L 5 3/8 3/8 5 103					52
44		2	L 6 4 3 5 116					72
45		2	L 6 4 3 5 116					72
46		4	L 5 3/8 3/8 5 103					1012
47		8	L 5 3/8 3/8 5 103					1114
48		4	L 6 3/8 3/8 6 118					83
49		3	L 6 3/8 3/8 6 118					83
50		1	L 6 3/8 3/8 6 118					83
51		3	L 6 3/8 3/8 7 120					879
52		3	L 6 3/8 3/8 7 120					879
53		2	L 6 3/8 3/8 7 120					879
54		8	L 6 3/8 3/8 8 120					1911
55		8	L 6 3/8 3/8 8 120					2023
56		2	L 6 4 3 8 116					240
57		2	L 6 4 3 8 116					240
58		2	L 6 4 3 8 116					240
59		2	L 6 4 3 8 116					240
60		8	L 6 3/8 3/8 8 120					
61		3	L 6 3/8 3/8 8 120					
62		4	L 6 3/8 3/8 8 120					
63		1	L 6 3/8 3/8 8 120					
64		8	L 6 3/8 3/8 8 120					
65		8	L 6 3/8 3/8 8 120					
66		1	L 5 3/8 3/8 5 103					
67		8	L 5 3/8 3/8 5 103					

STATE OF MAINE
STATE HIGHWAY COMMISSION
BANGOR BREWER BRIDGE
PENOBSCOT RIVER
BANGOR MAINE

AMERICAN BRIDGE
DIVISION

UNITED STATES STEEL COMPANY

DRAWINGS MADE AT TRENTON PLANT

WORK FABRICATED AT AMBRIDGE PLANT

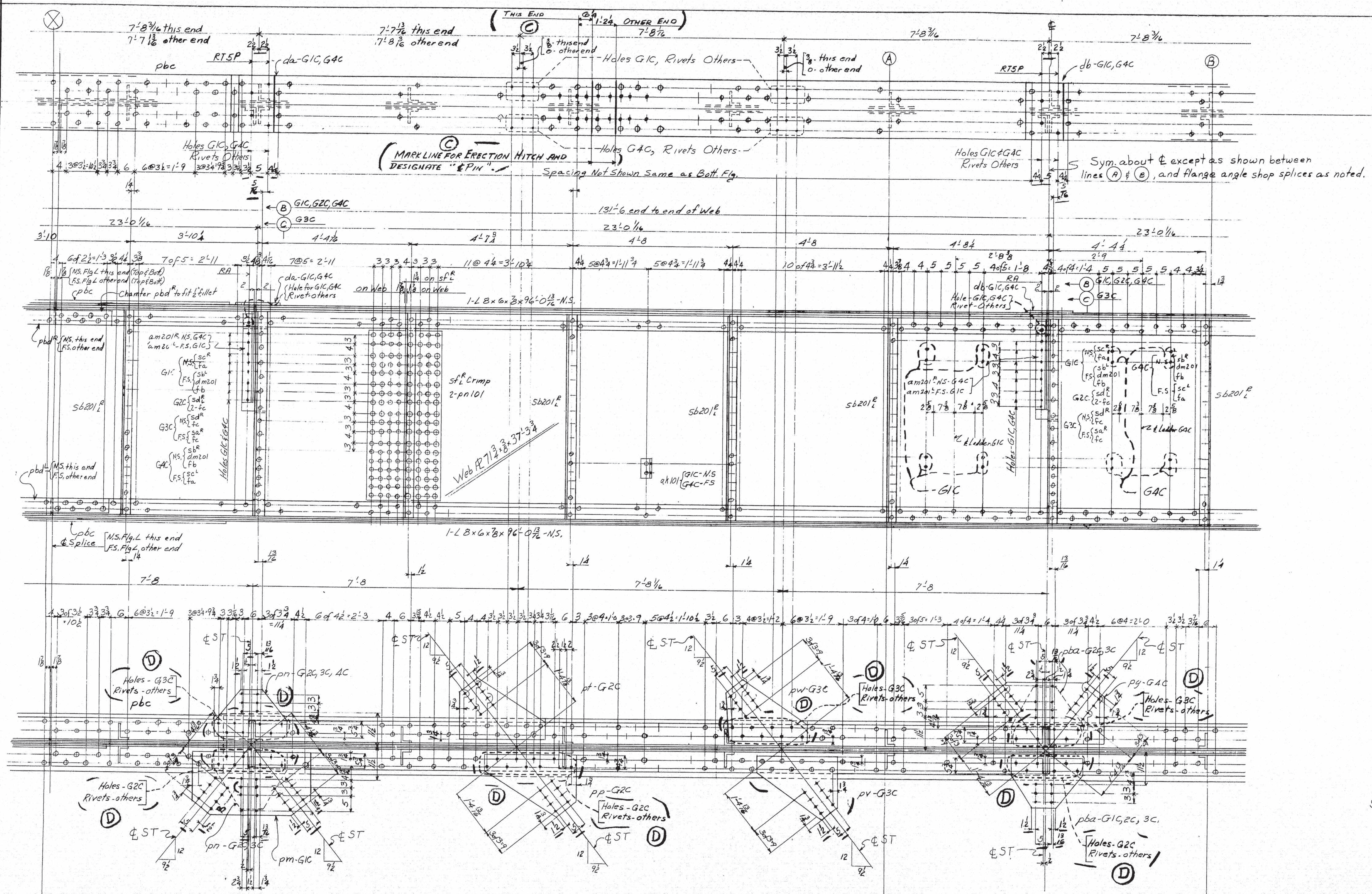
IN CHARGE OF F B Marks

IN CHARGE OF L.D. HARRIS
DRAW. MADE BY RNG DATE 11-23-53
DRAW. CHECKED BY FEL DATE 2-18-54

4	DRAW. CHECKED BY <u>EL</u>	DATE <u>2-18-59</u>
4	ORDER No.	SHEET No.
NS	Q4150	401 C

401 C
62-194

REV.	DATE	BY	CHK.	BOLTS		RIVETS	
				Qty	Size	Qty	Size
1							
2							
3							
4							
5							
6							
7							
8							
9							
10							
11							
12							
13							
14							
15							
16							
17							
18							
19							
20							
21							
22							
23							
24							
25							
26							
27							
28							
29							
30							
31							
32							
33							
34							
35							
36							
37							
38							
39							
40							
41							
42							
43							
44							
45							
46							
47							
48							
49							
50							
51							
52							
53							
54							
55							
56							
57							
58							
59							
60							
61							
62							
63							
64							
65							
66							
67							
68							
69							
70							
71							
72							
73							
74							
75							
76							
77							
78							
79							
80							
81							
82							
83							
84							
85							
86							
87							
88							
89							
90							
91							
92							
93							
94							
95							
96							
97							
98							
99							
100							

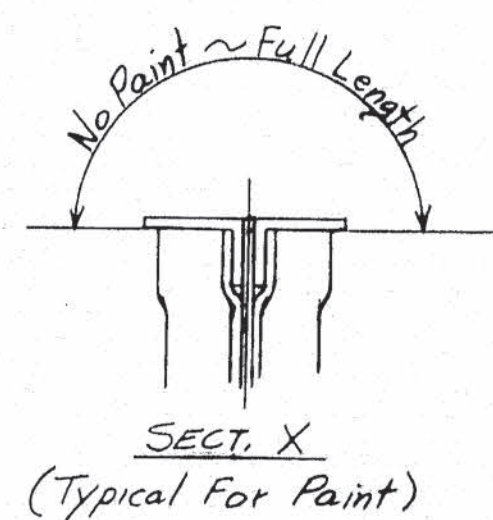
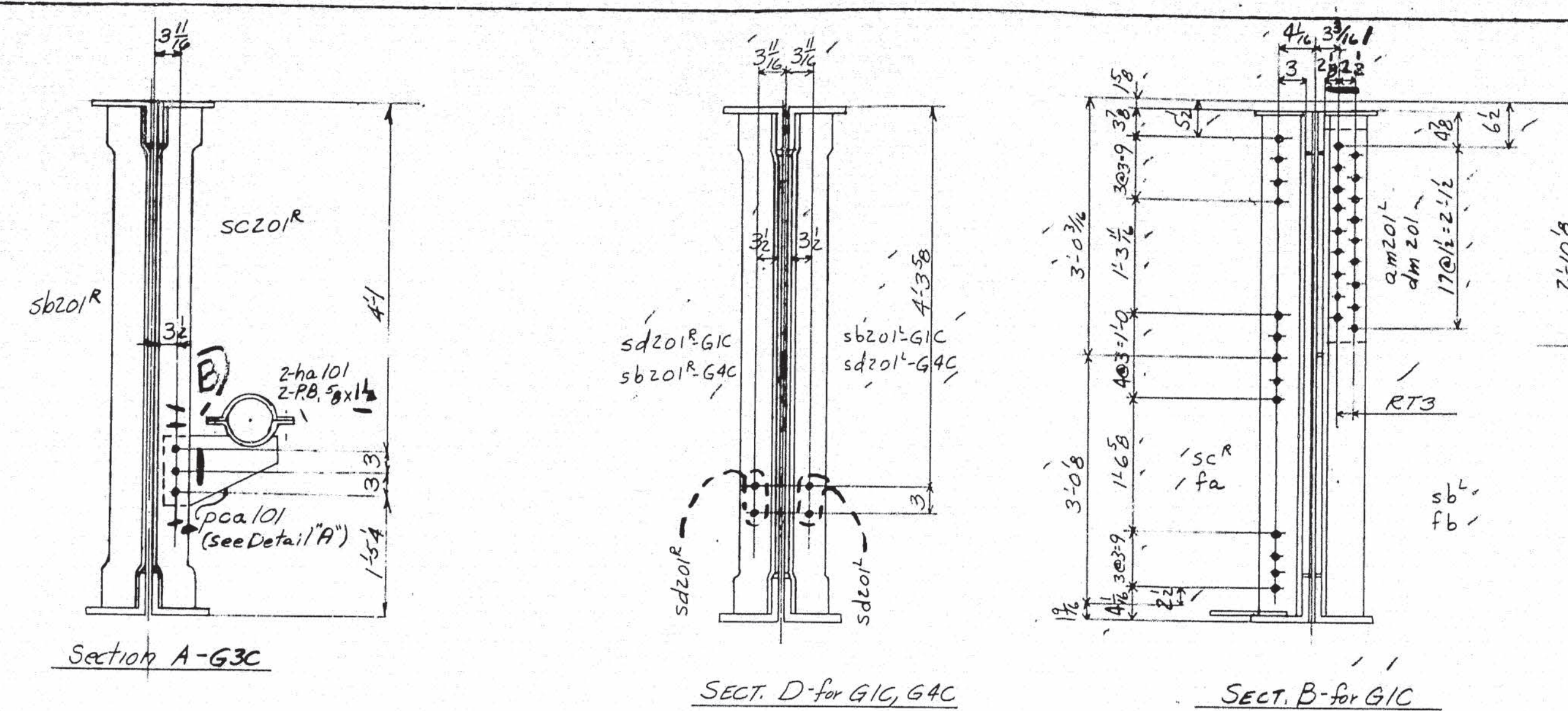


STATE OF MAINE
STATE HIGHWAY COMMISSION
BANGOR - BREWER BRIDGE
PENOBSCOT RIVER
BANGOR, MAINE

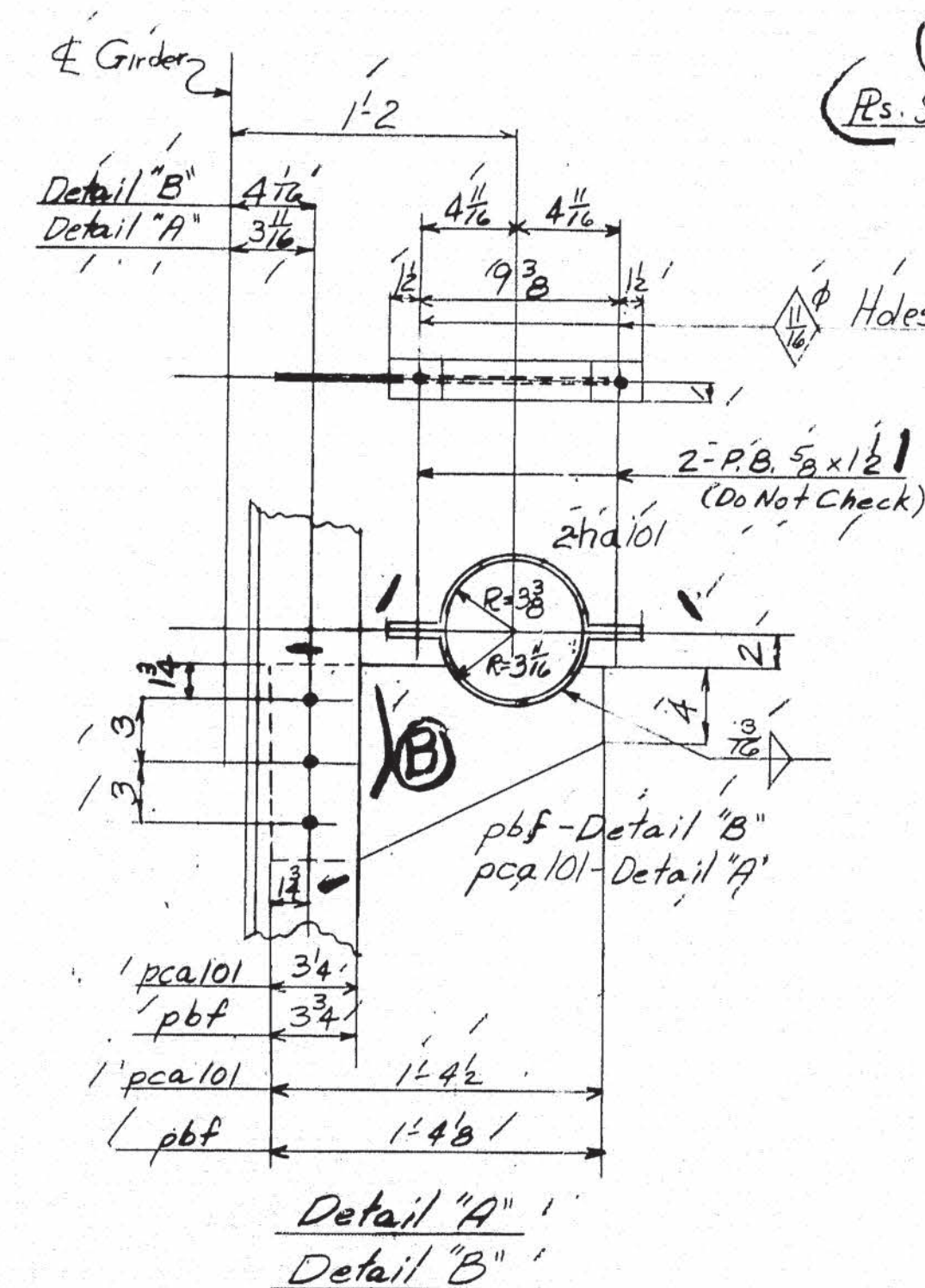
AMERICAN BRIDGE
DIVISION
UNITED STATES STEEL CORPORATION

DRAWINGS MADE AT Trenton PLANT
WORK FABRICATED AT Ambbridge PLANT
IN CHARGE OF E. B. Marks
DRAW. MADE BY RNG DATE 7-15-53
DRAW. CHECKED BY FEL DATE 8-15-54
ORDER No. Q 4150 SHEET No. 501 BC

62-186



74	2 R	174 %	2 1/2	Pk G2C	S	NET
75	2 R	174 %	2 1/2	Pk G3C	S	WEIG-
76	2 R	222 %	2 6/2	ph G3C	S	INCLUD
77	2 R	222 %	2 6/2	p9 G2C	S	WITH
78	2 R	174 %	2 2	pn G2C	S	BASEMA
79	2 R	174 %	2 2	pn G3C	S	PIECES F
80	1 R	174 %	2 0 1/2	pkz G2C	S	CASPERA
81	1 R	174 %	2 0 1/2	.Pbz G3C	S	GLOBE
82						
83						
84						
85						



NOTES:

SPECIFICATIONS- Maine State Highway Commission 1945 and Special Provisions

MATERIAL- O.H. Steel ASTM A7-52T

RIVETS - 7/8" ϕ HOLES - $\frac{15}{16}$ " ϕ Unless Noted

WORKMANSHIP- Holes in material thicker than the diameter of the rivet shall be drilled.

Holes in main material, including holes at splices, in bearing stiffeners, and splice plates to be subpunched or subdrilled 1/4" and reamed to size;

Holes marked RT to be subpunched or subdrilled $\frac{1}{4}$ " and reamed to size to a metal templet.

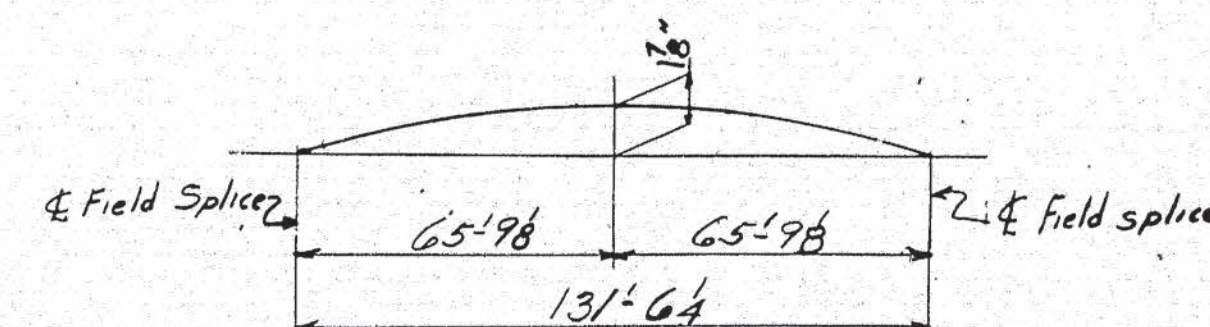
Holes marked RA to be subpunched or subdrilled 4" and reamed to size while connecting members are assembled.

to cambered position. (See Sheet E102)
Connecting members to be matchmarked.

Fillers and splice plates under stiffeners to fit within '8 of flange angles.

PAINT - B.E. indicates bearing end of stiffeners,
Vas. Except as shown in Section Y.

PAINT - Yes, except as shown in Section XI.
SHOP CONTACT SURFACES - No



CAMBER DIAGRAM

LIFTING WT. = 29 TONS

Sheet Total = 214,134.

AMERICAN BRIDGE

STATE OF MAINE
STATE HIGHWAY COMMISSION
BANGOR - BREWER BRIDGE
PENOBSCOT RIVER
BANGOR, MAINE

F		DRAWINGS MADE AT	<i>Trenton</i>	PLAN
E		WORK FABRICATED AT	<i>Ambridge</i>	PLAN
D		IN CHARGE OF	<i>E.B. Mann</i>	
C		DRAW. MADE BY	<i>RNG</i>	DATE <i>7-22-53</i>
B	<i>5-18-54</i>	DRAW. CHECKED BY	<i>FEL</i>	DATE <i>7-16-54</i>
X	<i>2-22-55</i>	ORDER No.		SHEET No.
REVISIONS		<i>Q4150</i>		<i>501C</i>

Adv. B.

Vol. 100

62-197

AMERICAN BRIDGE COMPANY
INDEX TO MARKS

MARKS—SIDE FIGURE FOLLOWED BY TOP FIGURE
SHEET NUMBER IS GIVEN IN SPACE AT INTERSECTION

GENERAL MARK	NAME OF MEMBER	SHEET LETTER
B	BEAMS	
0	101 101 101 103 103 103 103 105	
1	105 105 106 106 106 107 107 108 107	
2	108 109 109 109 110	
3		
4		
5		
6		
7		
8		
9		

GENERAL MARK	NAME OF MEMBER	SHEET LETTER
F	BEAM	
0	102 104	
1		
2		
3		
4		
5		
6		
7		
8		
9		

GENERAL MARK	NAME OF MEMBER	SHEET LETTER
D	DIAPHRAGMS	
0	112 112 112 112 112 112 112 112 112	
1	112 112 112 112 115 115 115 112	
2		
3		
4		
5		
6		
7		
8		
9		

GENERAL MARK	NAME OF MEMBER	SHEET LETTER
FB	FASCIA BEAM	
0	113 113 113 113 113	
1	114 114 114 114	
2		
3		
4		
5		
6		
7		
8		
9		

GENERAL MARK	NAME OF MEMBER	SHEET LETTER
ED	EXPANSION DAM	
0	111 111 111 111 111 111	
1		
2		
3		
4		
5		
6		
7		
8		
9		

GENERAL MARK	NAME OF MEMBER	SHEET LETTER
M	SIDEWALK BRACKETS	
0	115 115 114 114 114 114 115 115 115	
1	115 F101 F101 F101 F101 F101 116 116	
2	116 116 116 116 116 116 116	
3		
4		
5		
6		
7		
8		
9		

GENERAL MARK	NAME OF MEMBER	SHEET LETTER
M	PLATES	
0		
1		
2		
3		
4		
5		
6		
7		
8		
9		

GENERAL MARK	NAME OF MEMBER	SHEET LETTER
M	PLATES	
0		
1		
2		
3		
4		
5		
6		
7		
8		
9		

GENERAL MARK	NAME OF MEMBER	SHEET LETTER
M	PLATES	
0		
1		
2		
3		
4		
5		
6		
7		
8		
9		

GENERAL MARK	NAME OF MEMBER	SHEET LETTER
M	PLATES	
0		
1		
2		
3		
4		
5		
6		
7		
8		
9		

GENERAL MARK	NAME OF MEMBER	SHEET LETTER
M	PLATES	
0		
1		
2		
3		
4		
5		
6		
7		
8		
9		

GENERAL MARK	NAME OF MEMBER	SHEET LETTER
M	PLATES	
0		
1		
2		
3		
4		
5		
6		
7		
8		
9		

GENERAL MARK	NAME OF MEMBER	SHEET LETTER
M	PLATES	
0		
1		
2		
3		
4		
5		
6		
7		
8		
9		

GENERAL MARK	NAME OF MEMBER	SHEET LETTER
M	PLATES	
0		
1		
2		
3		
4		
5		
6		
7		
8		
9		

GENERAL MARK	NAME OF MEMBER	SHEET LETTER
M	PLATES	
0		
1		
2		
3		
4		
5		
6		
7		
8		
9		

GENERAL MARK	NAME OF MEMBER	SHEET LETTER
M	PLATES	
0		
1		
2		
3		
4		
5		
6		
7		
8		
9		

GENERAL MARK	NAME OF MEMBER	SHEET LETTER
M	PLATES	
0		
1		
2		
3		
4		
5		
6		
7		
8		
9		

GENERAL MARK	NAME OF MEMBER	SHEET LETTER
M	PLATES	
0		
1		
2		
3		
4		
5		
6		
7		
8		
9		

GENERAL MARK	NAME OF MEMBER	SHEET LETTER
M	PLATES	
0		
1		
2		
3		
4		
5		
6		
7		
8		
9		

GENERAL MARK	NAME OF MEMBER	SHEET LETTER
M	PLATES	
0		
1		
2		
3		
4		
5		
6		
7		
8		
9		

GENERAL MARK	NAME OF MEMBER	SHEET LETTER
M	PLATES	
0		
1		
2		
3		
4		
5		
6		
7		
8		
9		

GENERAL MARK	NAME OF MEMBER	SHEET LETTER
M	PLATES	
0		
1		
2		
3		
4		
5		
6		
7		
8		
9		

GENERAL MARK	NAME OF MEMBER	SHEET LETTER
M	PLATES	
0		
1		
2		
3		
4		
5		
6		
7		
8		
9		

GENERAL MARK	NAME OF MEMBER	SHEET LETTER
M	PLATES	
0		
1		
2		
3		
4		
5		
6		
7		
8		
9		

GENERAL MARK	NAME OF MEMBER	SHEET LETTER
M	PLATES	
0		
1		
2		
3		
4		
5		
6		
7		
8		
9		

GENERAL MARK	NAME OF MEMBER	SHEET LETTER
M	PLATES	
0		
1		
2		
3		
4		
5		
6		
7		
8		
9		

GENERAL MARK	NAME OF MEMBER	SHEET LETTER
M	PLATES	
0		
1		
2		
3		
4		
5		
6		
7		
8		
9		

GENERAL MARK	NAME OF MEMBER	SHEET LETTER
M	PLATES	
0		
1		
2		
3		
4		
5		
6		
7		
8		
9		

GENERAL MARK	NAME OF MEMBER	SHEET LETTER
M	PLATES	
0		
1		
2		
3		
4		
5		
6		
7		
8		
9		

GENERAL MARK	NAME OF MEMBER	SHEET LETTER
M	PLATES	
0		
1		
2		
3		
4		
5		
6		
7		
8		
9		

GENERAL MARK	NAME OF MEMBER	SHEET LETTER
M	PLATES	
0		
1		
2		
3		
4		
5		
6		
7		
8		
9		

GENERAL MARK	NAME OF MEMBER	SHEET LETTER
M	PLATES	
0		
1		
2		
3		
4		
5		
6		
7		
8		
9		

GENERAL MARK	NAME OF MEMBER	SHEET LETTER
M	PLATES	
0		
1		
2		
3		
4		
5		
6		
7		
8		
9		

GENERAL MARK	NAME OF MEMBER	SHEET LETTER
M	PLATES	
0		
1		
2		
3		
4		
5		
6		
7		
8		
9		

GENERAL MARK	NAME OF MEMBER	SHEET LETTER
M	PLATES	
0		
1		
2		
3		
4		
5		
6		
7		
8		
9		

GENERAL MARK	NAME OF MEMBER	SHEET LETTER
M	PLATES	
0		
1		
2		
3		
4		
5		
6		
7		
8		
9		

GENERAL MARK	NAME OF MEMBER	SHEET LETTER
M	PLATES	
0		
1		
2		
3		
4		
5		
6		
7		
8		
9		

GENERAL MARK	NAME OF MEMBER	SHEET LETTER
M	PLATES	

