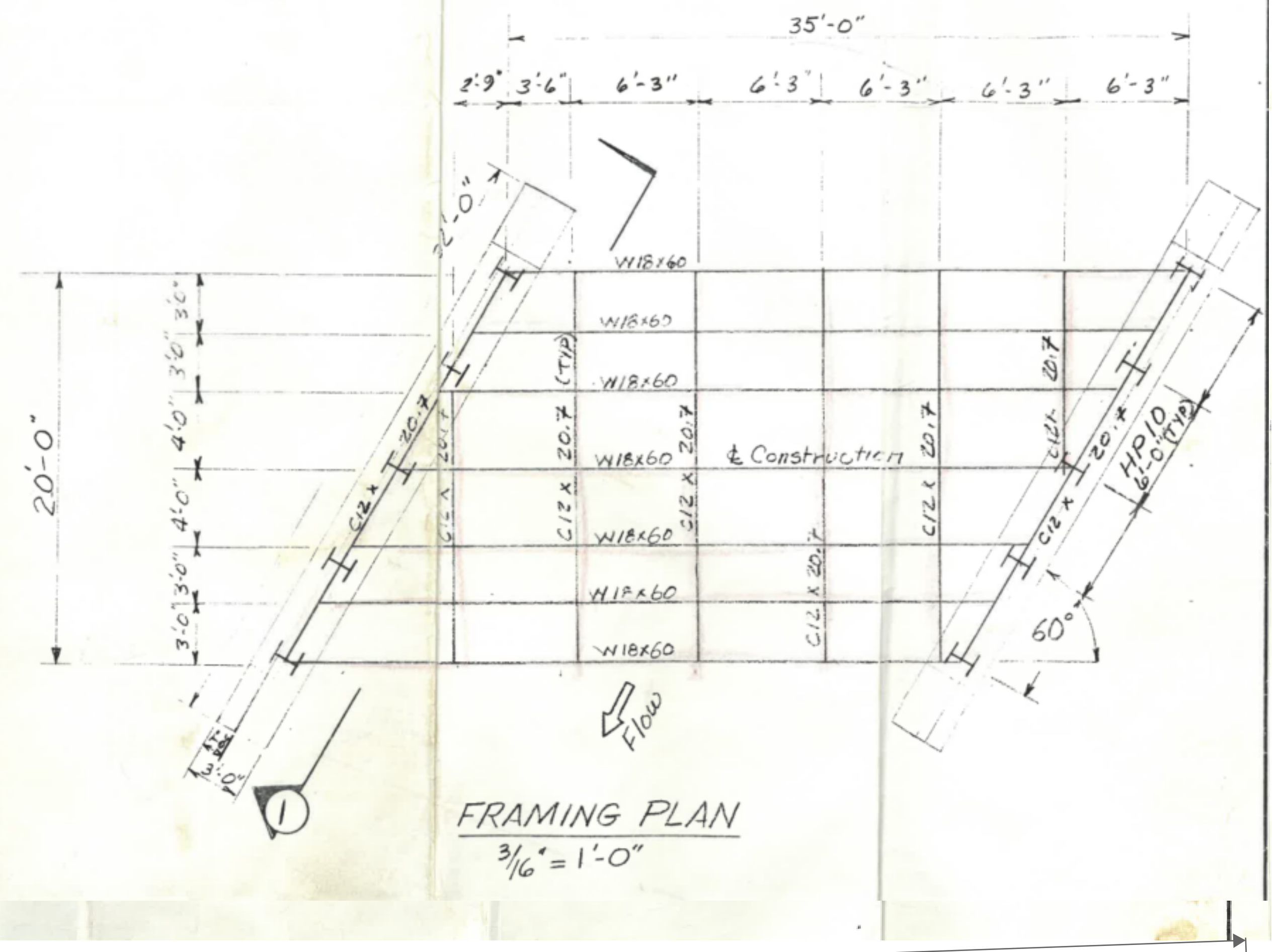
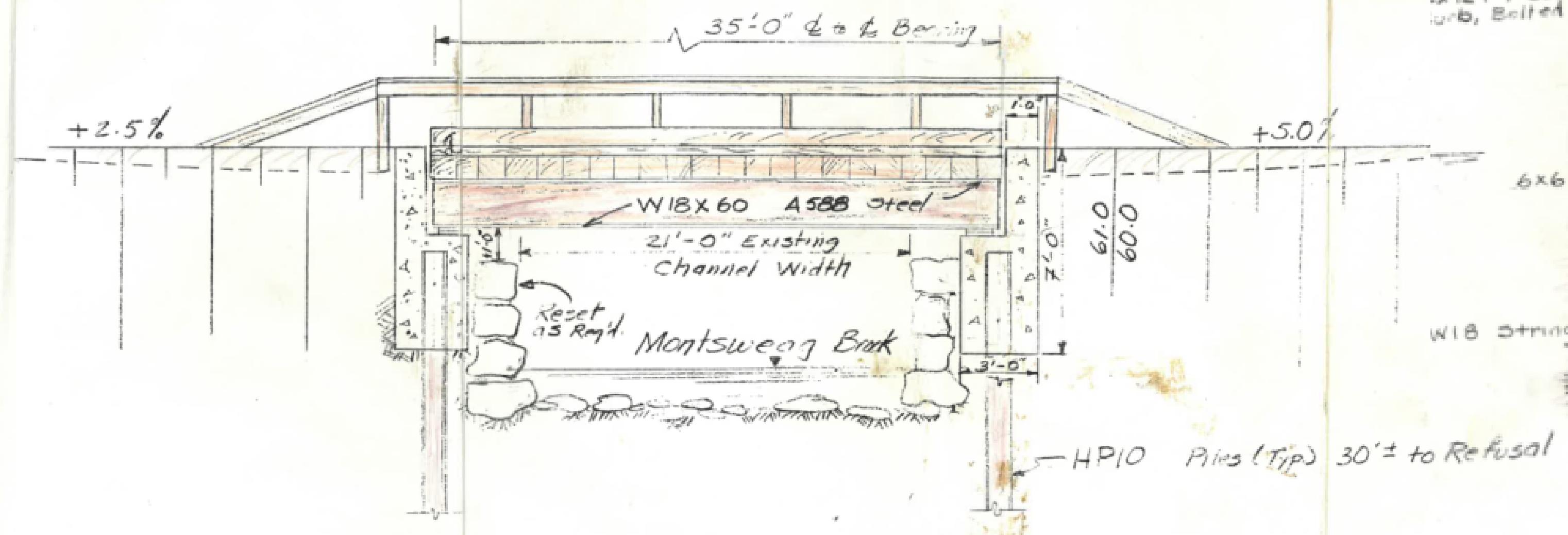


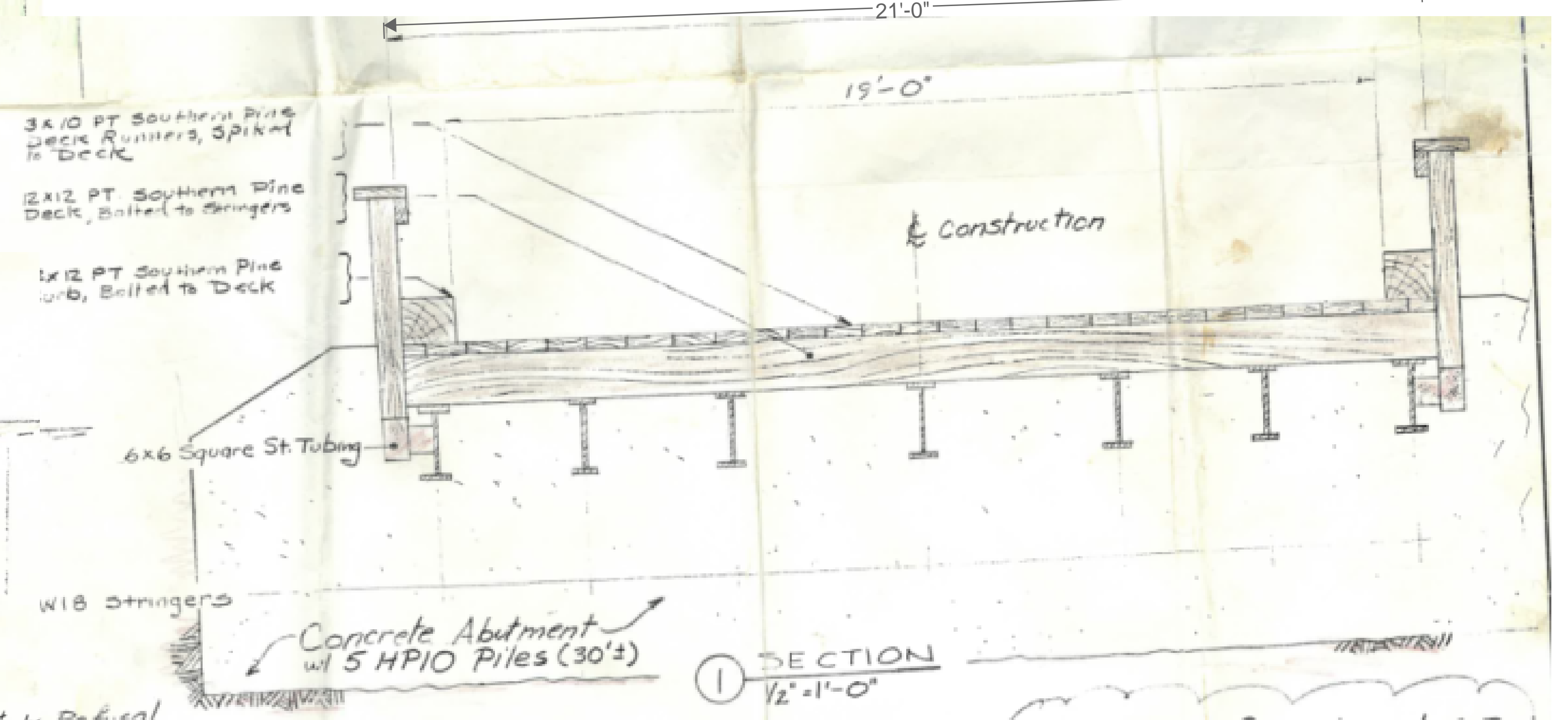
PLAN VIEW  
NTS



FRAMING PLAN  
3/16" = 1'-0"



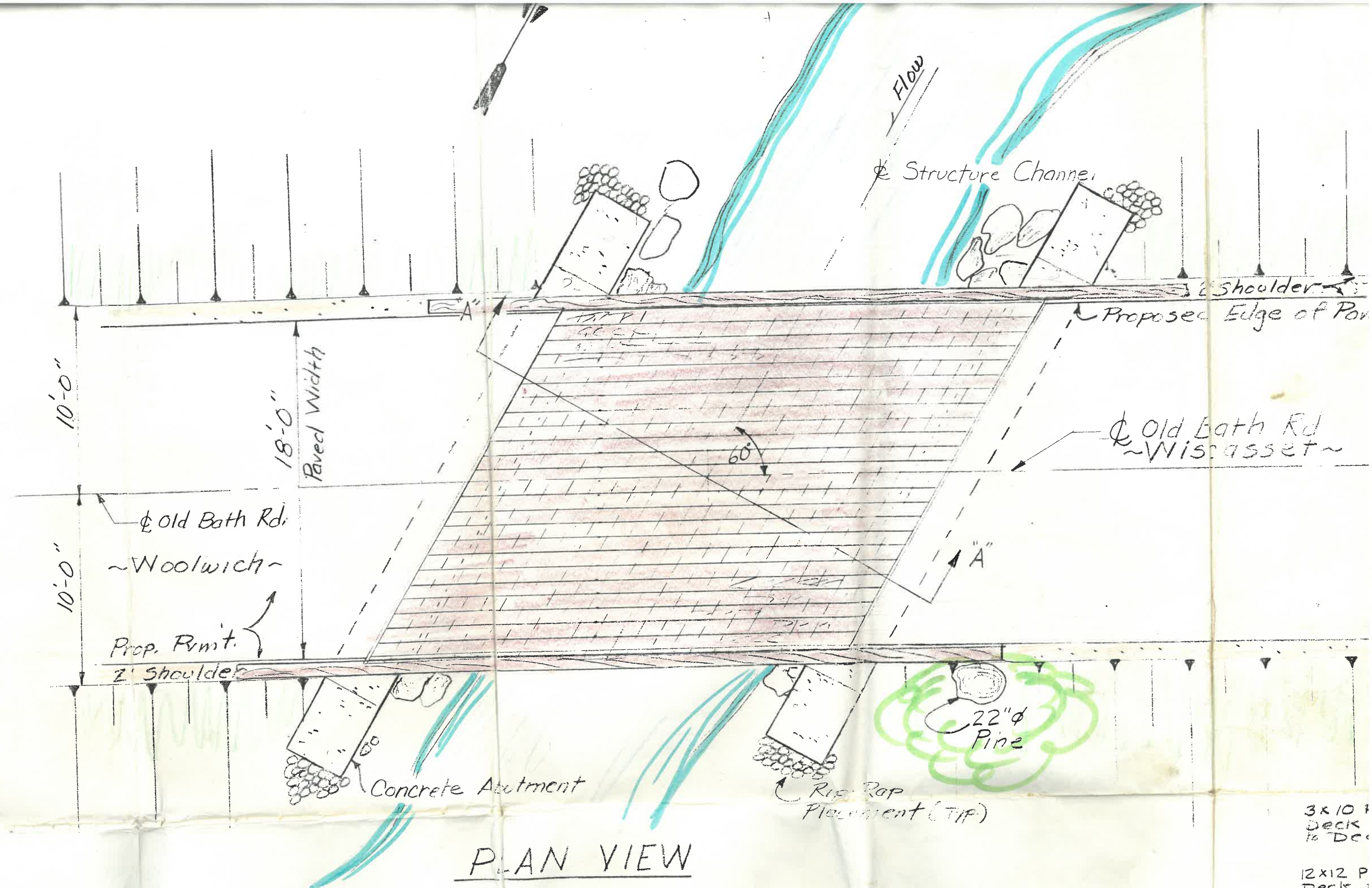
SECTION A-A  
NTS



SECTION  
1 1/2" = 1'-0"

Not For Construction

OLD STAGE ROAD		APPROVED BY:	DRAWN BY: TE
SCALE: As Noted	DATE: 8 June 70	REVISED	
PRELIMINARY DESIGN		DRAWING NUMBER	
WISCASSET, ME		OSR-C2	



PLAN VIEW  
NTS

3x10 Deck  
to Deck  
12x12 P  
Deck,



3x10 PT Southern Pine  
Deck Runners, Spiked  
to Deck

12x12 PT. Southern Pine  
Deck, Bolted to Stringers

12x12 PT Southern Pine  
Curb, Bolted to Deck

6x6 Square St. Tubing

W18 Stringers

Concrete Abutment  
w/ 5 HP10 Piles (30'±)

30'± to Refusal

19'-0"

Construction

SECTION  
1/2" = 1'-0"

Not For Construction

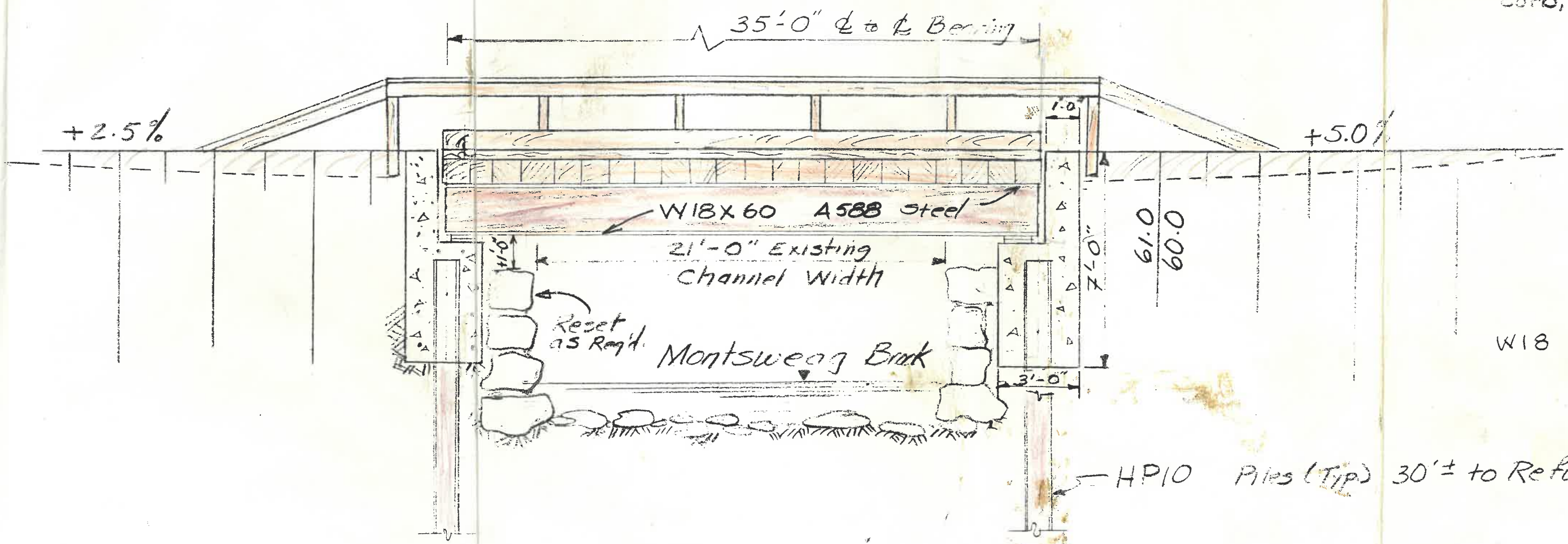
OLD STAGE ROAD	
SCALE: As Noted	APPROVED BY:
DATE: 8 June 90	DRAWN BY T.E.
PRELIMINARY DESIGN	
WISCONSIN, ME	DRAWING NUMBER OSR-C2

Concrete Abutment

Rip Rap Placement (Tip)

# PLAN VIEW

NTS



3x10 PT S  
Deck Run  
to Deck

12x12 PT S  
Deck, Bolt

12x12 PT S  
Corb, Bolt

6x

W18 Strin

HP10 Piles (Tip) 30'± to Refusal

# SECTION A-A

NTS

**ESTIMATE SHEET**

JOB NO./TITLE: Old Stage Road - Wood Stage Bridge - Steel Stringer  
 FACILITY: Estimate of Approx Design using  
 OPERATION: Contract Labor

885-0276  
 1<sup>st</sup> Rev  
 5<sup>th</sup> Rev  
 Steel Frame Stone McDowell

SHEET 1 of 5 PAGE 5  
 DATE 4/14/80 REV  
 EST 76 EXT      CKD     

CODE	ITEM	QUANTITY	UNIT	MANHOURS		LABOR		MATERIAL		SUB-CONTRACTS AND OTHER COSTS		TOTAL COST
				UNIT	TOTAL M.H.	UNIT	TOTAL \$	UNIT	TOTAL \$	UNIT	TOTAL \$	
1	Pier Soundings	LS										
2	Design Check	LS										
3	Clearing	0.6	Acres									
4	Grubbing	70	c/y									
5	Structural EXCAV	80	c/y									
6	Structural Fill	9	c/y									
7	1 1/2" MPD x 42	300	Lf									
8	Concrete Nightstands	20	c/y									
9	AB'S 1" P x 12"	90	Lb.									
10	Reinforcing Plates	14	EA									
11	Pavement EXCAV	230	Sy									
12	CIP'S ST (GRAVEL) (6.84)	350	Lb									
13	Batts 7/8" x 14 1/2" x 14 1/2"	105	Lb.									
14	Steel Diaphragms	3190	Lb									
15	Steel Stringers	7.5	Ton									
16	Wood Rail Supports	120	Lb									
17	Deck Timber 12x12 PT	10.1	MBS									
18	Runners 3x10 PT	2.2	MBS									
19	Wood Rail 3x10 1/4"	1.6	MBS									
20	Hardware - Deck/Rail											
21	J Bolts 490ea.	735	Lb.									
22	Rail Bolts 100ea	150	Lb.									
23	Spikes - Deck/End											
24	150 ea											
25	70 ea											
26	Preservative/Solux	17.5	Lb									
27	Leam	10	Gal.									
28	Seed/Mulch	80	c/y									
29	RIP-RAP	3.25	Sy									
30	STEEL FAB/PLATE	1.125	c/y									
31		LS	-									
32												
PAGE TOTAL												
CARRY FORWARD												

27 28 29 30 31 32

Old Stage Road  
 Wood Bridge - Steel Stringer  
 Estimate of Prelim Design using  
 Contract Labor

CODE	ITEM	QUANTITY	UNIT	MANHOURS		LABOR		MATERIAL		SUB-CONTRACTS AND OTHER COSTS		TOTAL COST
				UNIT	TOTAL M.H.	UNIT	TOTAL \$	UNIT	TOTAL \$	UNIT	TOTAL \$	
	BROUGHT FORWARD											
1	Gravel Base	185	cy				29570		35650		22615	88835
2	Common Board	40	ty								2775	2775
3	Rebar										902	902
4	2" Binder	60	ton								1560	1560
5	1 1/2" Surface	45	ton								1260	1260
6												
7												
8												
9												
10												
11												
12	Demolition - Remove Erist Bridge										5000	5000
13												
14												
15												
16												
17	Equipment - Crane Rental - Crane do setting steel										7000	7000
18												
19												
20												
21												
22												
23												
24												
25												
26												
27												
28												
29												
30												
31	PAGE TOTAL						29570		35650		17995	17995
32	CARRY FORWARD						29570		35650		40610	160800

