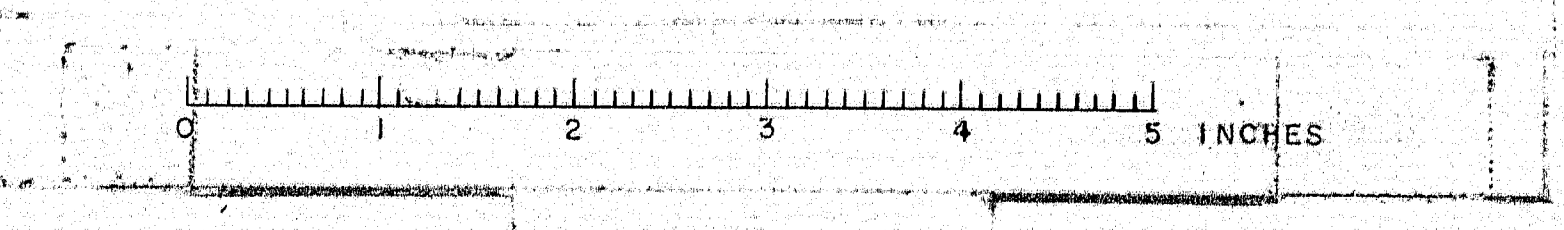


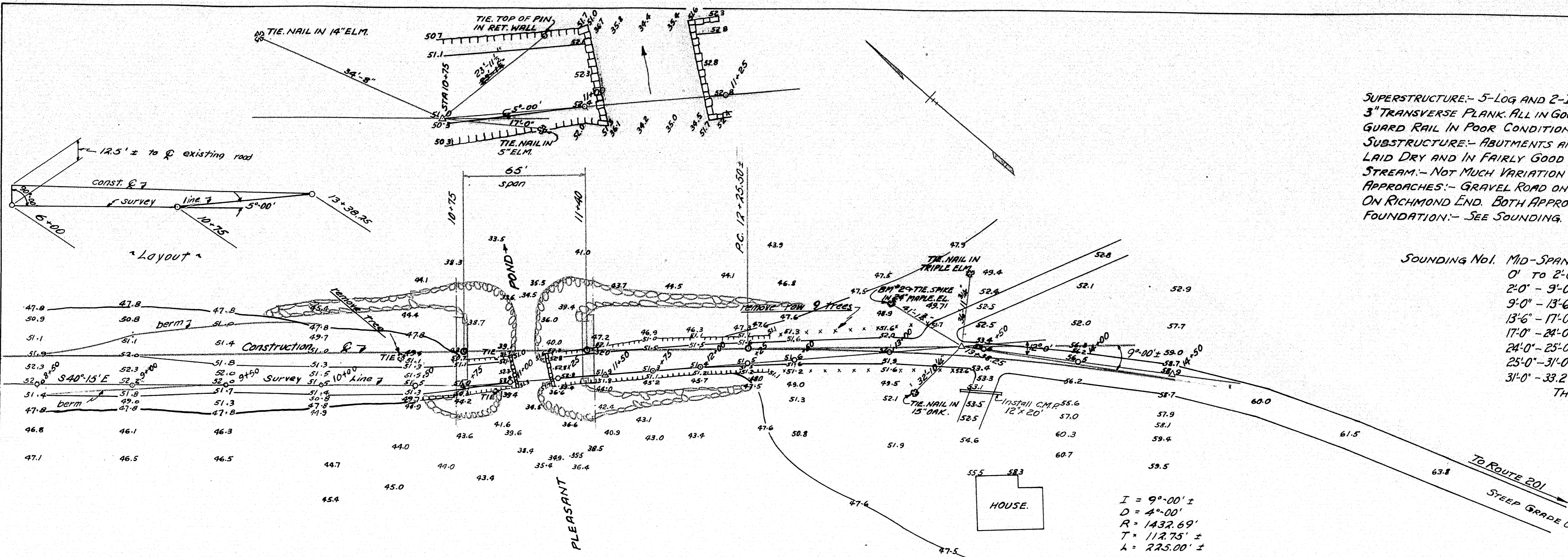
Revised 3-21-55 Between Sta. 6+00 and 10+50

SURVEY:- WELCH	TOWN.
PLOTTED:- FERGUSON	BRIDGE. 3925

STATE HIGHWAY COMMISSION.
 BRIDGE DIVISION.
 THOROUGHFARE BRIDGE.
 OVER
 PLEASANT POND.
 BETWEEN THE TOWNS OF
 LITCHFIELD & RICHMOND.
 KENNEBEC - SAGadahoc COUNTIES.
 SURVEY PLAN.

SHEET No 1 of 7 AUGUSTA, ME. AUGUST 1945.

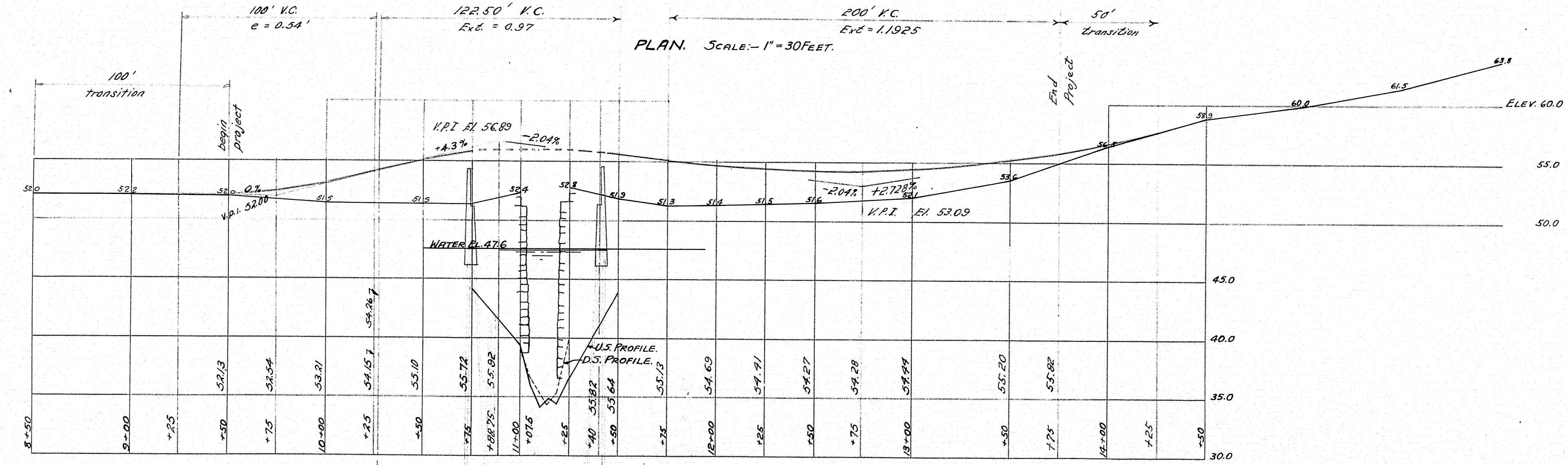




SUPERSTRUCTURE:- 5-LOG AND 2-I BEAM STRINGERS SUPPORTING 1-LAYER OF 3" TRANSVERSE PLANK. ALL IN GOOD CONDITION. NO WHEEL GUARD. WIRE MESH GUARD RAIL IN POOR CONDITION.
 SUBSTRUCTURE:- ABUTMENTS AND RET. WALLS OF MEDIUM SIZED FIELD STONES, LAID DRY AND IN FAIRLY GOOD CONDITION.
 STREAM:- NOT MUCH VARIATION IN ELEVATION AND VERY LITTLE CURRENT.
 APPROACHES:- GRAVEL ROAD ON LITCHFIELD END, SURFACE TREATED GRAVEL ON RICHMOND END. BOTH APPROACHES VERY NARROW.
 FOUNDATION:- SEE SOUNDING.

SOUNDING NO. 1. MID-SPAN D.S. SIDE. STREAM BED ELEV. 35.0
 0' to 2'-0" BY HAND.
 2'-0" - 9'-0" 6" BLOW.
 9'-0" - 13'-6" 3"
 13'-6" - 17'-0" 5/8"
 17'-0" - 24'-0" 1/2"
 24'-0" - 25'-0" 3/8"
 25'-0" - 31'-0" 1/4"
 31'-0" - 33'-2" 1/8"
 THROUGH SAND AND CLAY.

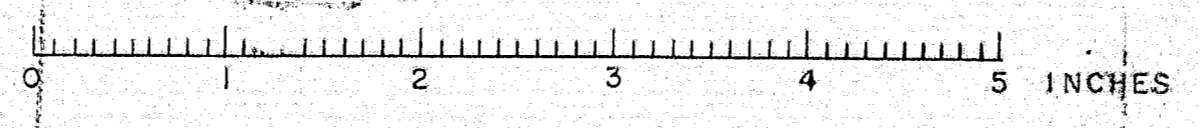
$I = 9^{\circ}00' \pm$
 $D = 4^{\circ}00'$
 $R = 1432.69'$
 $T = 112.75' \pm$
 $L = 225.00' \pm$

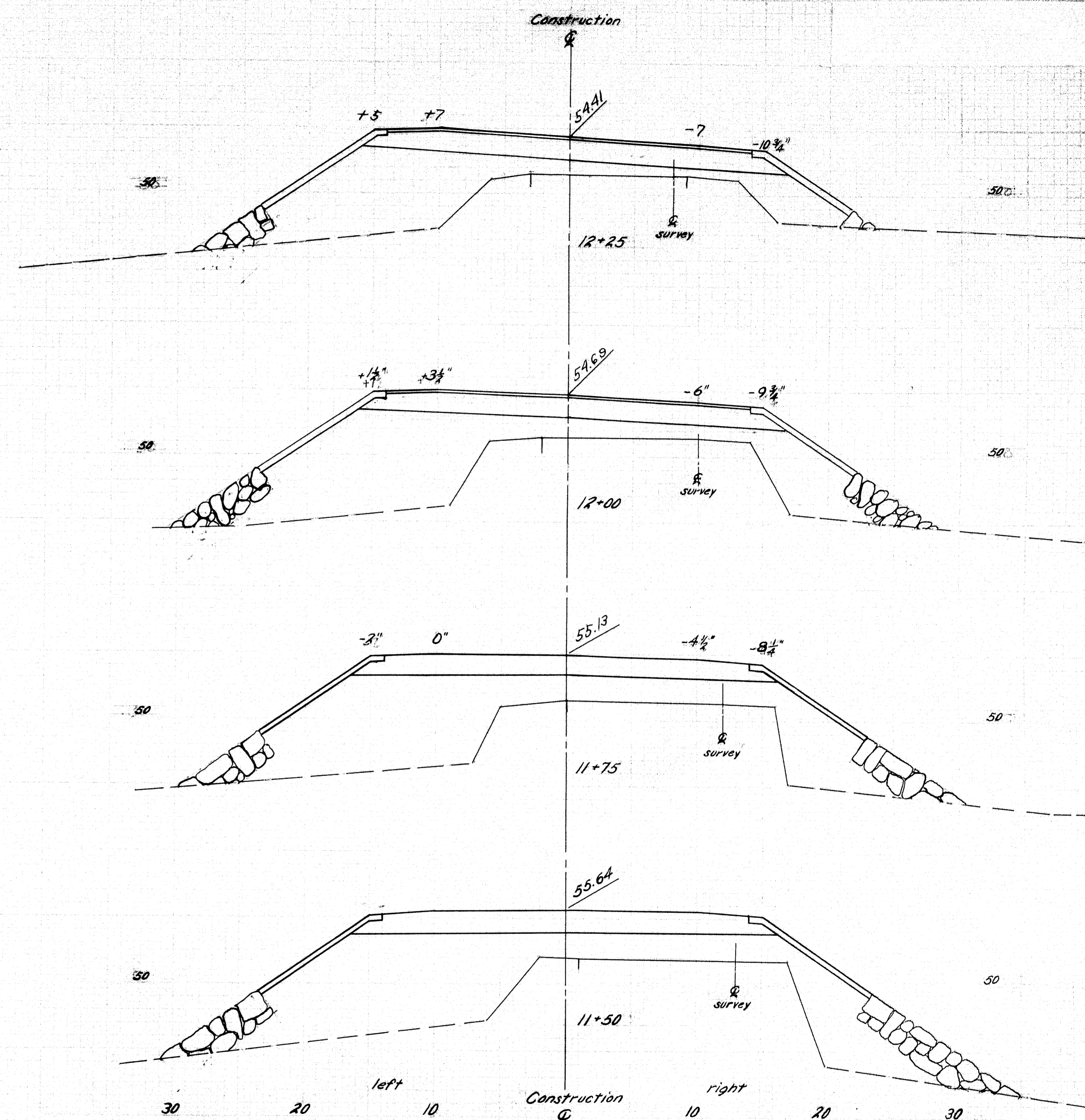
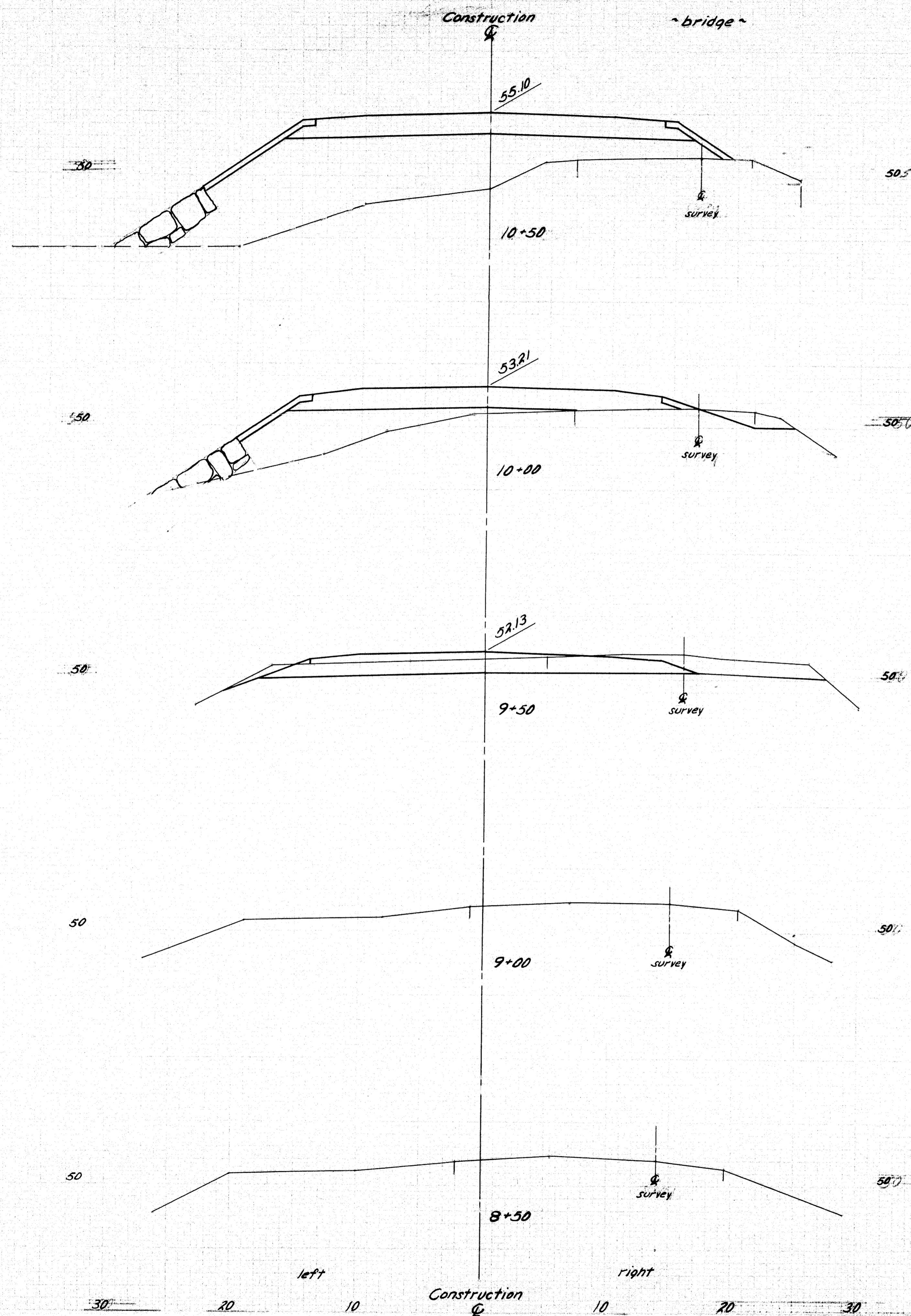


PROFILE ALONG SURVEY LINE.
 HORIZ. 1" = 30 FEET.
 VERT. 1" = 5 FEET.

Revised 3-21-55 Between Sta 6+00 and 10+50
 SURVEY:- WELCH, TOWN.
 PLOTTED:- FERGUSON, BRIDGE. 3925
 STATE HIGHWAY COMMISSION.
 BRIDGE DIVISION.
 THOROUGHFARE BRIDGE.
 OVER
 PLEASANT POND.
 BETWEEN THE TOWNS OF
 LITCHFIELD & RICHMOND.
 KENNEBEC-SAGadahoc COUNTIES.
 SURVEY PLAN. 170

SHEET No 2 of 7 AUGUSTA, ME. AUGUST 1945.

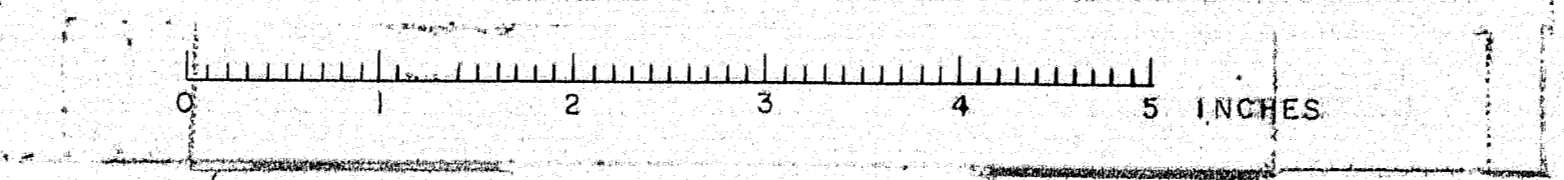


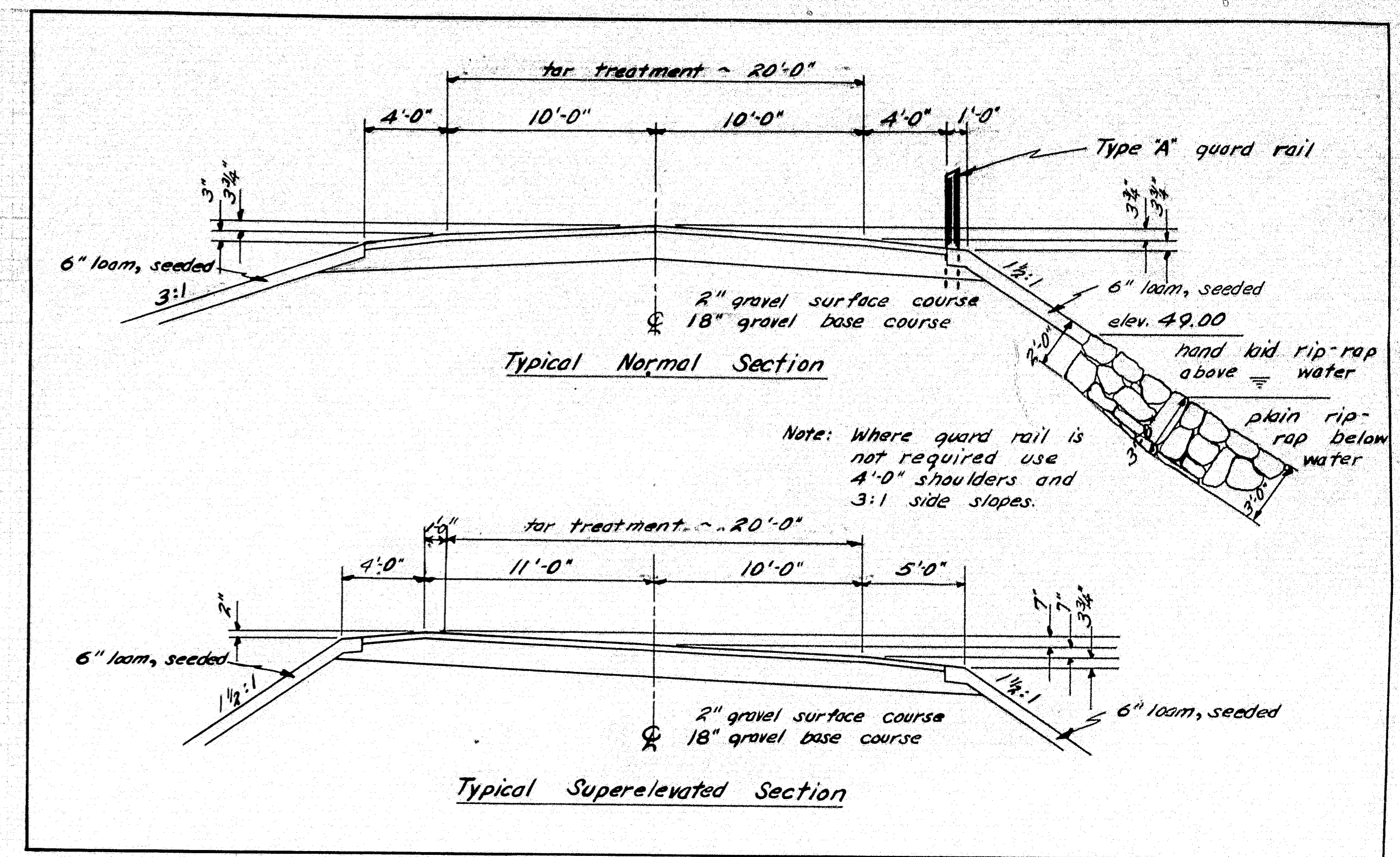
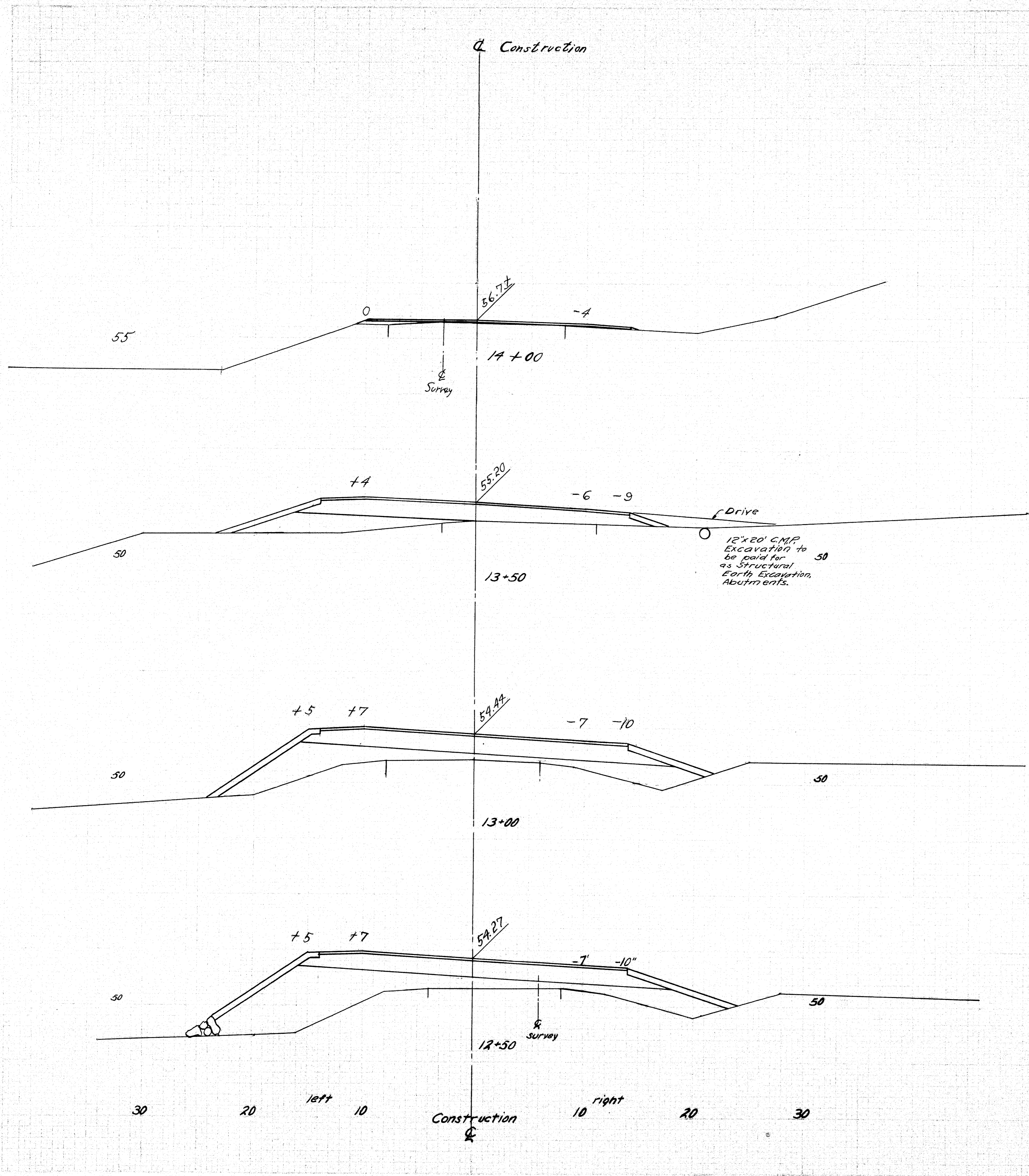


Note: Do not excavate for gravel base where existing material is suitable.

DESIGN - MOLLICONE	BRIDGE - 3925
CHECK - <i>MMR</i>	STATE HIGHWAY COMMISSION
BRIDGE DIVISION	
THOROUGHFARE BRIDGE	
OVER	
PLEASANT POND	
BETWEEN THE TOWNS OF	
LITCHFIELD & RICHMOND	
KENNEBEC - SAGadahoc COUNTIES	
CROSS SECTIONS	
SHEET 3 OF 7 AUGUSTA, MAINE JULY 1955.	

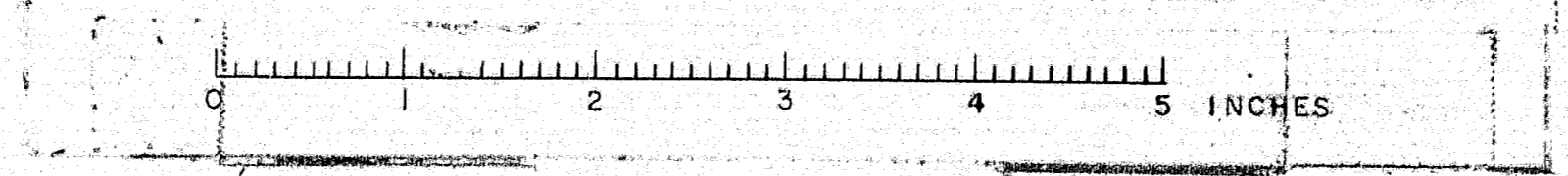
64-171

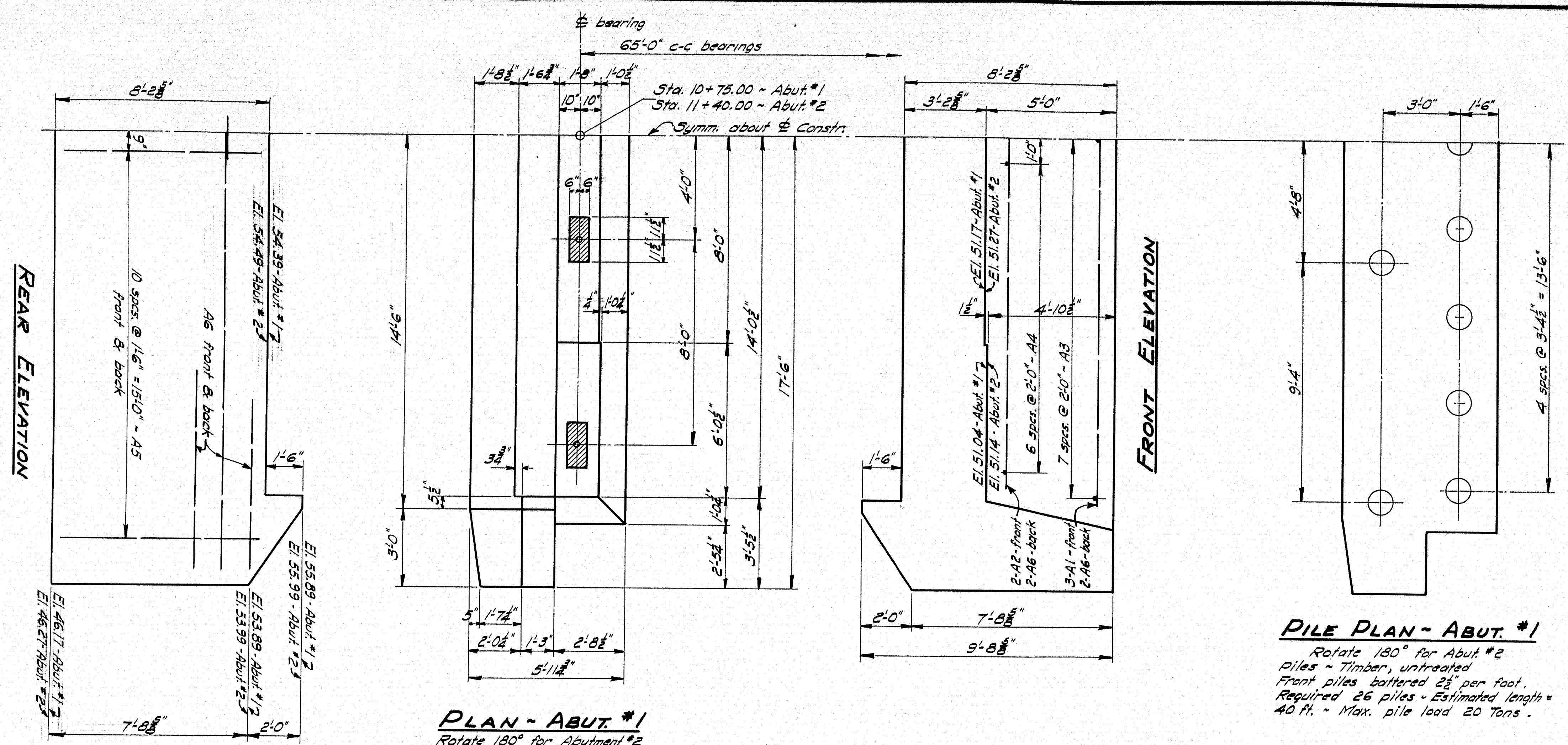




DESIGN - MOLLICONE	BRIDGE - 3925
CHECK - MJC	
STATE HIGHWAY COMMISSION BRIDGE DIVISION	
THOROUGHFARE BRIDGE	
OVER	
PLEASANT POND	
BETWEEN THE TOWNS OF	
LITCHFIELD & RICHMOND	
KENNEBEC-SAGadahoc COUNTIES	
CROSS SECTIONS: 172	
SHEET 4 OF 7	AUGUSTA, MAINE JULY 1955.

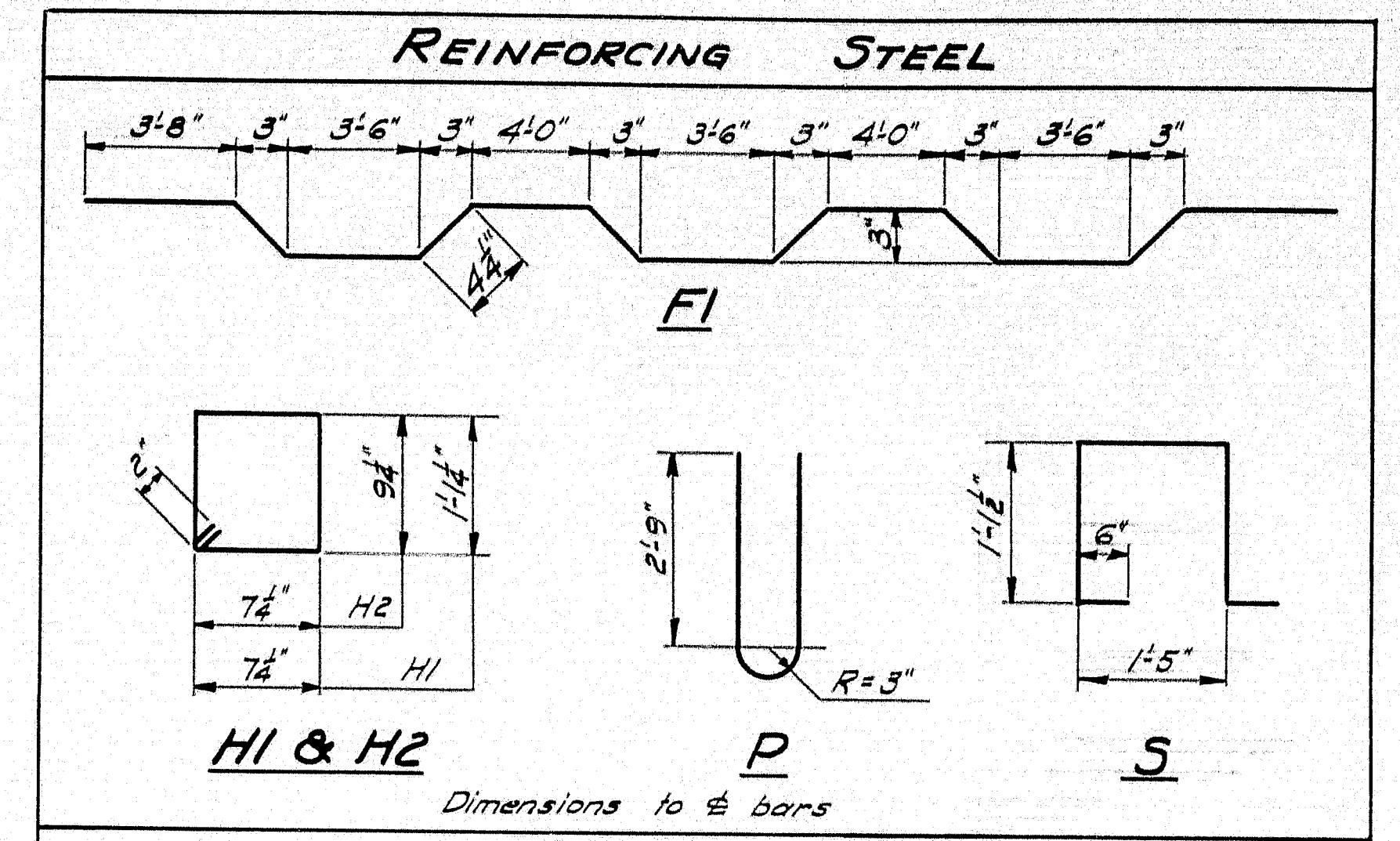
64-172





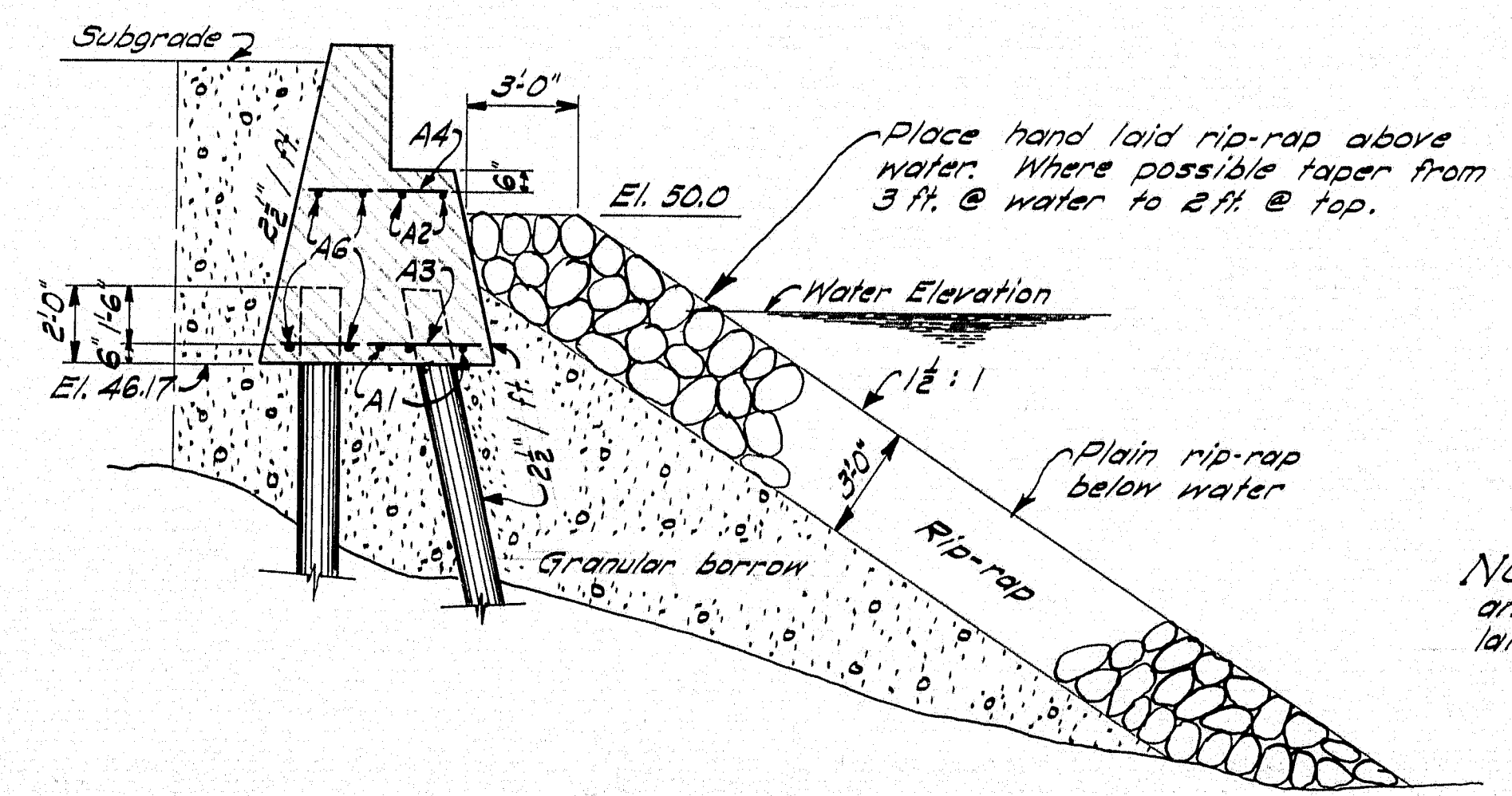
PILE PLAN - ABUT. #1
 Rotate 180° for Abut. #2
 Piles - Timber, untreated
 Front piles battered 2 1/2" per foot.
 Required 26 piles - Estimated length = 40 ft. - Max. pile load 20 Tons.

NOTE:
 Dress shaded bearing areas to exact elevation and size shown.
 Place A2 & A4 to clear anchor bolts.
 Excavated material placed below El. 48.0 shall conform to specifications for Granular Borrow.

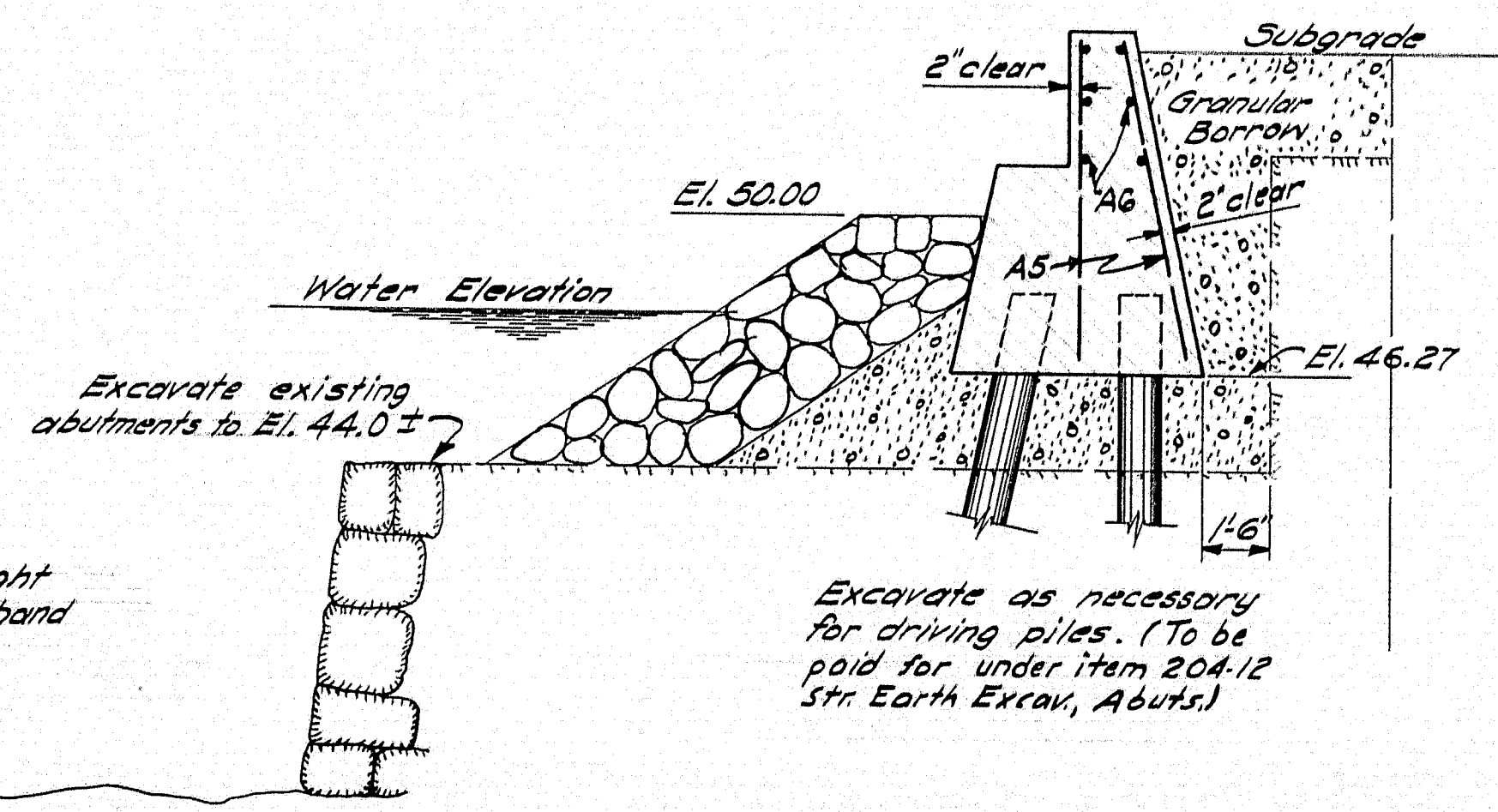


BENT BARS									
MARK	SIZE	No.	LENGTH	LOCATION	MARK	SIZE	No.	LENGTH	LOCATION
P	#6	32	6'-3"	All rail posts	H1	#3	12	3'-9"	End posts
F1	#5	83	28'-0"	Slab	H2	#3	36	3'-1"	Int. posts
S	#4	138	4'-8"	Curbs					

STRAIGHT BARS									
MARK	SIZE	No.	LENGTH	LOCATION	MARK	SIZE	No.	LENGTH	LOCATION
A1	#6	6	29'-0"	Abutments	A3	#4	30	5'-5"	Abutments
A2	#6	4	27'-0"	"	A4	#4	28	3'-8"	"
A6	#6	40	17'-0"	" (splice)	A5	#4	88	7'-6"	"
D	#5	126	1'-5"	Lower rail bar	F3	#4	132	23'-7"	Slab & Curb (splice)
F2	#5	170	27'-4"	Slab	R1	#4	28	8'-0"	Top rail bar
R3	#5	14	8'-3"	Lower rail bar	R2	#4	28	8'-4"	" " "



ABUT. #1 - SECTION
 At Construction E



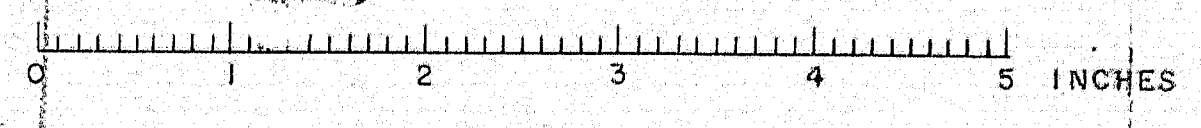
ABUT. #2 - SECTION
 10 ft. U.S. from Construction E

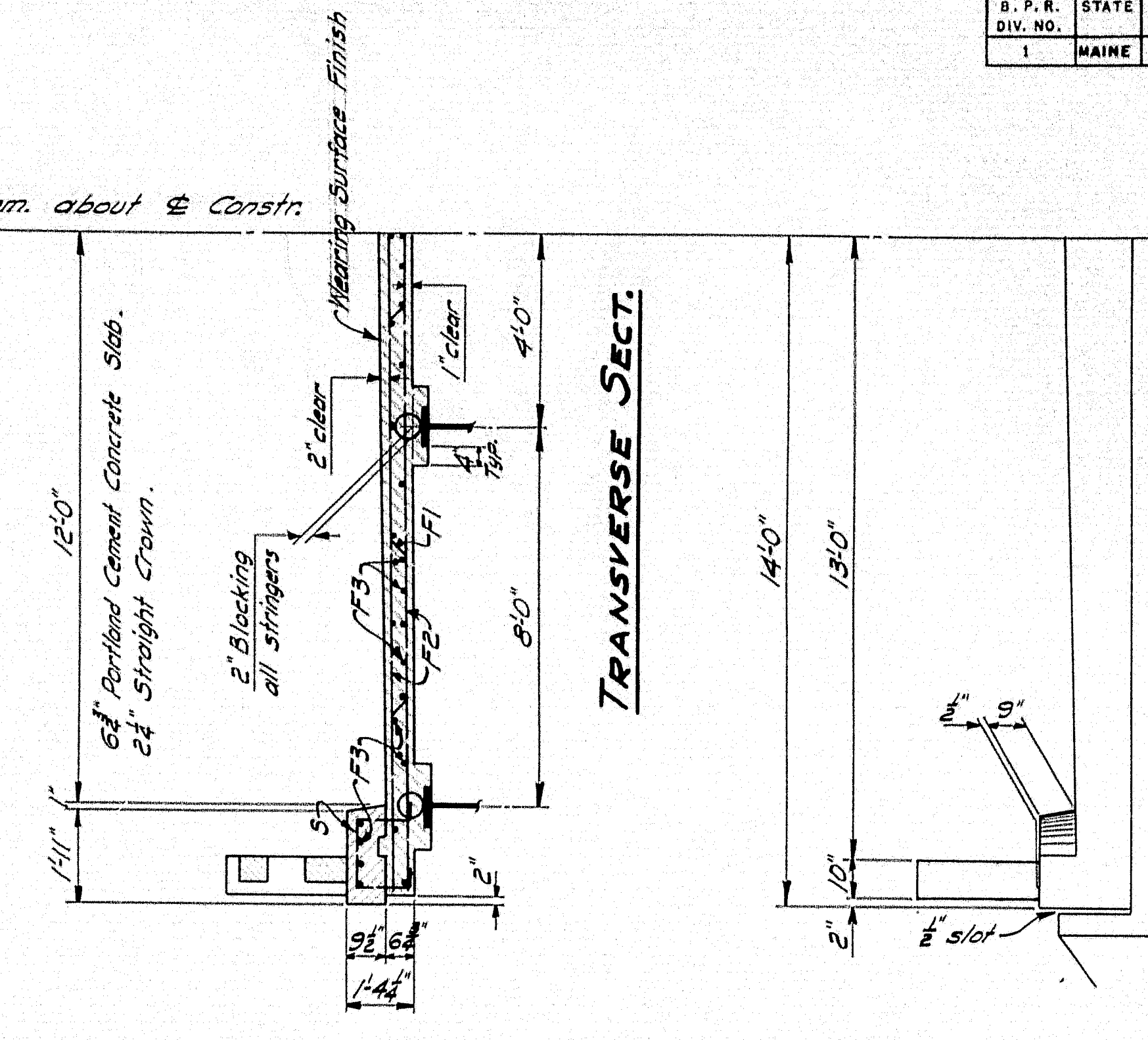
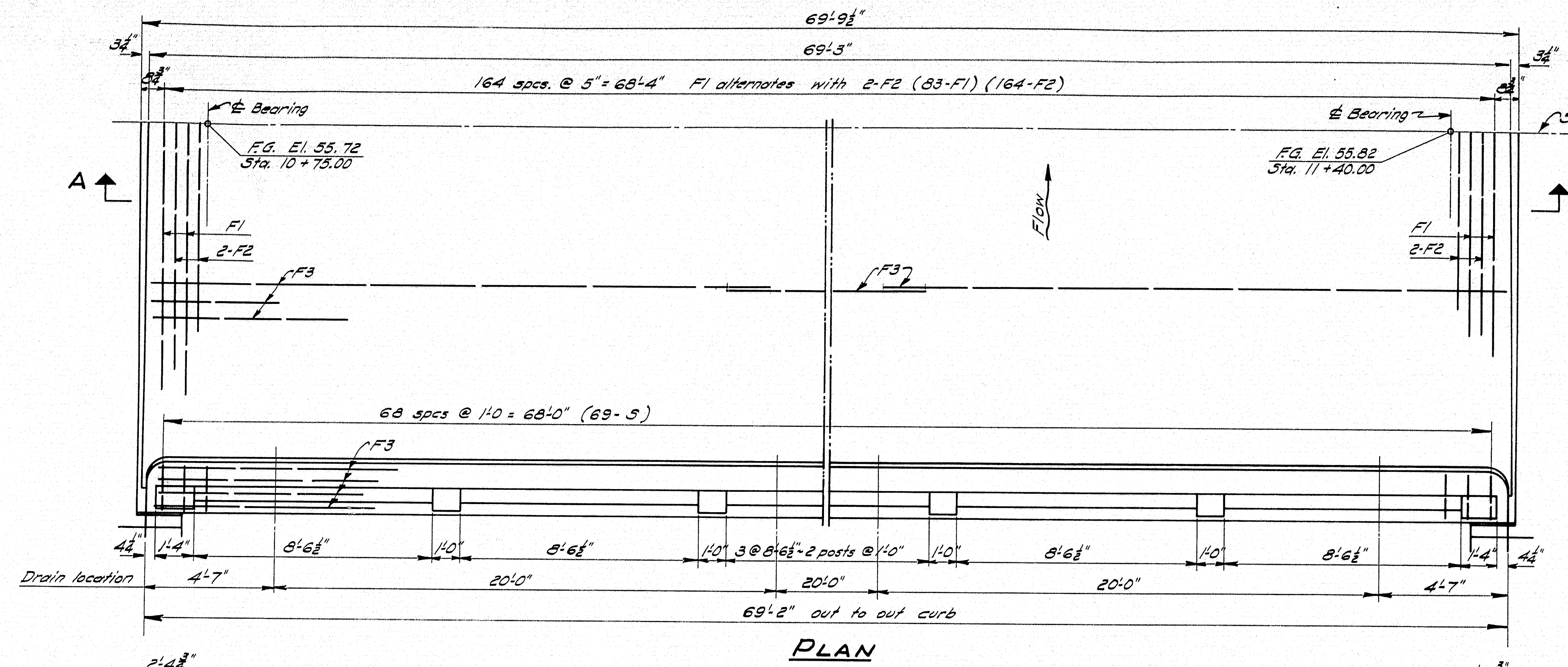
NOTE: Payment for any necessary unwatering of the forms, to place abutment concrete, to be included in the contract unit price for Item No. 701-33-Portland Cement Concrete, Abutments and Retaining Walls.
 Cover the 1/2" slots between the curb and parapets with two layers of heavy roofing 10" wide. Coat the surface of concrete and the contact surface of each layer as applied with a suitable grade of roofing cement. Recess area to be covered 1/2".

NOTE: At ends of wings, at right angles to roadway drop top of hand laid rip-rap to El. 49.00

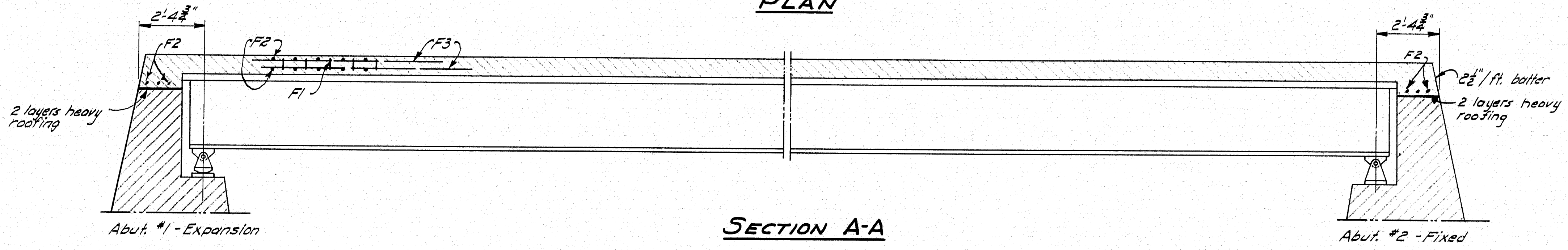
Excavate as necessary for driving piles. (To be paid for under item 204.12 Str. Earth Excav, Abutts.)

DESIGN - FLYNT TRACE - CLARK CHECK - MCKE	BRIDGE NO. 3925 SURVEY PLOT -
STATE HIGHWAY COMMISSION BRIDGE DIVISION	
THOROUGHFARE BRIDGE	
OVER	
PLEASANT POND	
BETWEEN THE TOWNS OF	
LITCHFIELD & RICHMOND	
KENNEBEC-SAGadahoc COUNTIES	
SUBSTRUCTURE	
SHEET 5 OF 7	AUGUSTA, MAINE AUG. 1955

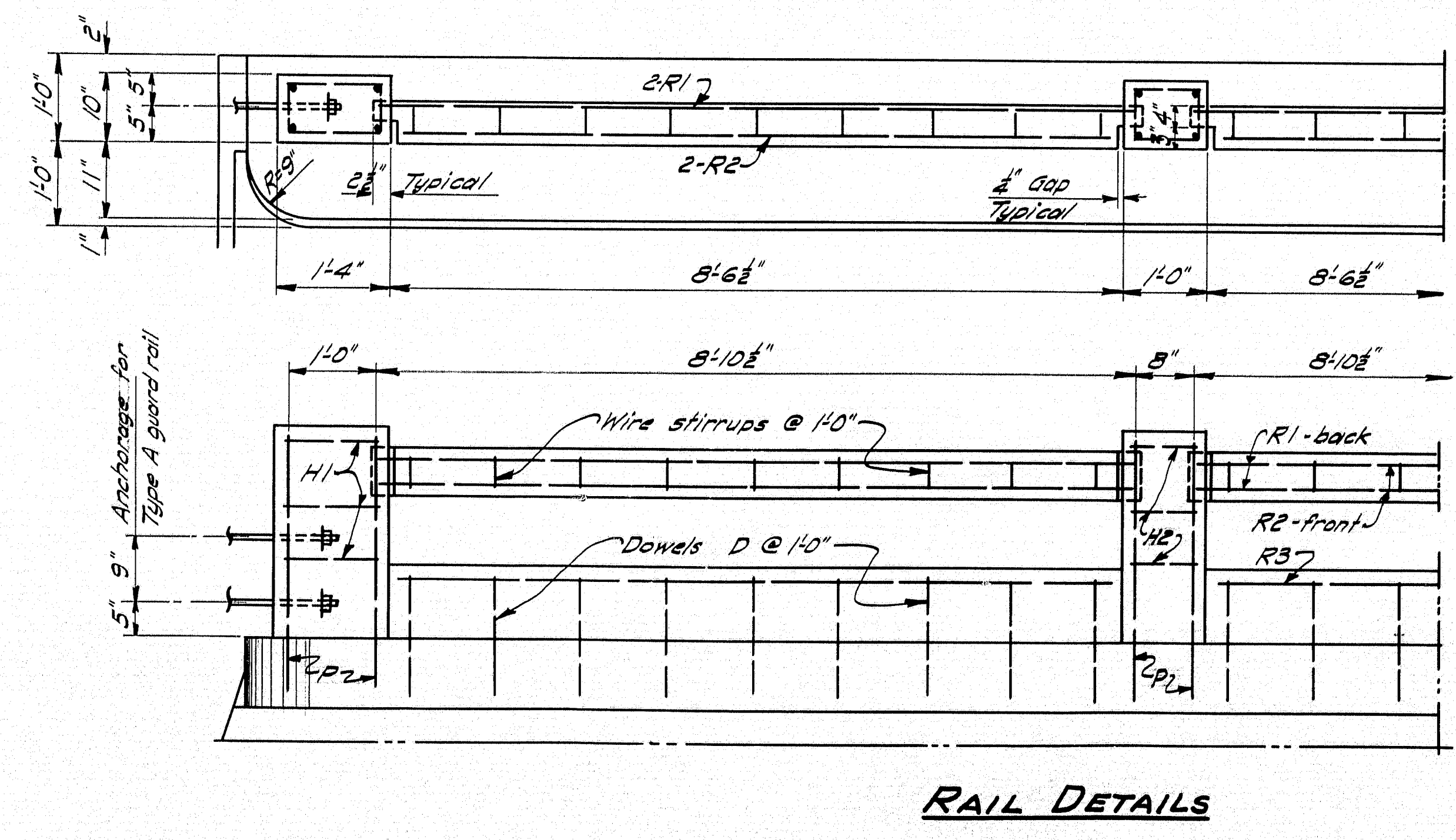
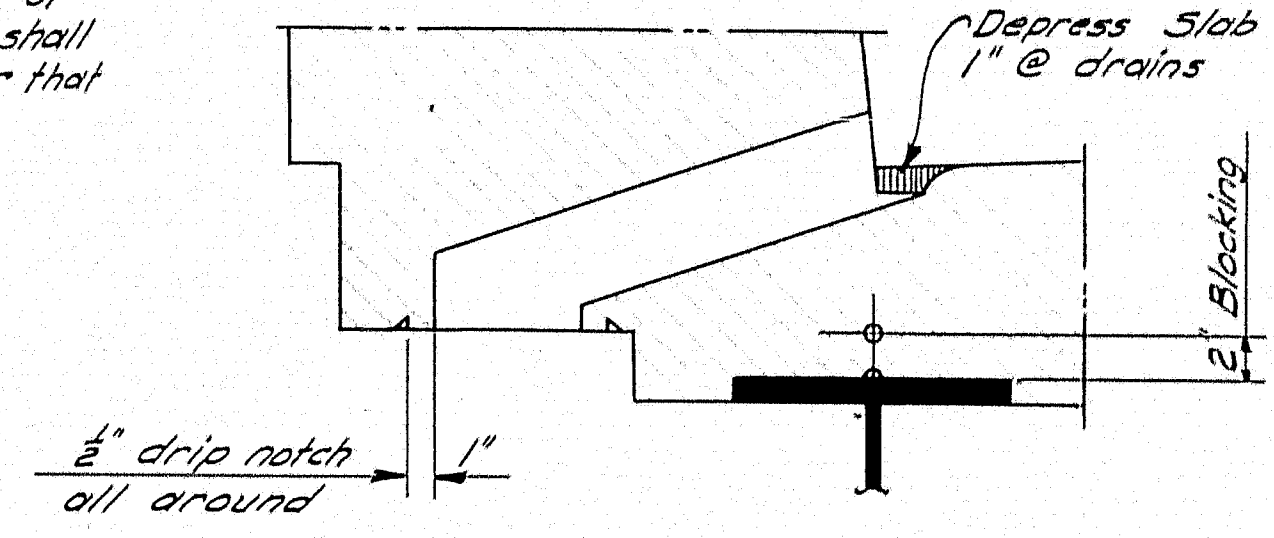




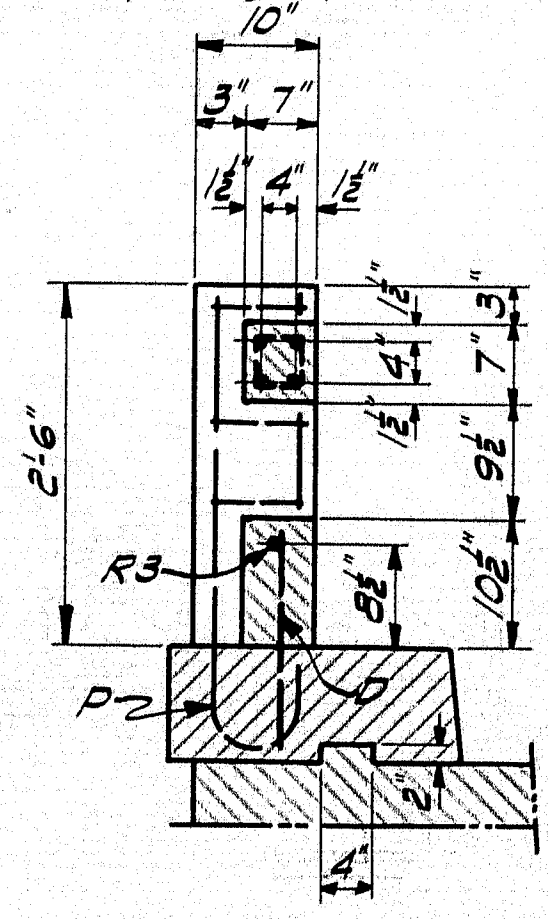
END ELEVATION
NOTE: See sh #5 for covering of slabs.



NOTE: The blocking shall be constant for the full length of the span. Curbs and rails shall be constructed to the camber that remains in the beams.



NOTE: 5 bars to be in position before slab is placed.
P bars & dowels, D, to be in position before curb is placed.
Top rail bars to be precast and set in position so that tongue end project 2 1/2\"/>



DESIGN
Specifications - A.A.S.H.O. May 1953
Loading - H15-44
B = 18,000 lbs
f_c = 1200 psi
n = 10

CONCRETE CLASSIFICATION
Superstructure - Class A
Substructure - Class B
Rail - Class Y

DESIGN - FLYNT TRACE - CLARK CHECK - WALKER	BRIDGE NO. 3925 SURVEY PLOT -
STATE HIGHWAY COMMISSION BRIDGE DIVISION	
THOROUGHFARE BRIDGE	
OVER PLEASANT POND	
BETWEEN THE TOWNS OF LITCHFIELD & RICHMOND	
KENNEBEC - SAGADAHOC COUNTIES	
SUPERSTRUCTURE	
SHEET 6 OF 7	AUGUSTA, MAINE AUG. 1955

