

STATE OF MAINE
DEPARTMENT OF TRANSPORTATION
PLANS
IRON BRIDGE
OVER
SEBASTICOOK RIVER

IN THE TOWN OF
PALMYRA
SOMERSET COUNTY
PROJECT NUMBER BR-025-1860(01)
PROJECT LENGTH 0.237 MILES

Palmyra

INDEX OF SHEETS

TITLE SHEET	1
ESTIMATE OF QUANTITIES	2
GENERAL PLAN	3-5
PROFILE	6-7
FOUNDATION SURVEY & BORING DETAILS	8-9
TYPICAL SECTIONS	10
CROSS SECTIONS	11-17
ABUTMENT NO.1	18
ABUTMENT NO.2	19
PIER	20
FRAMING PLAN	21
SUPERSTRUCTURE	22
SUPERSTRUCTURE DETAILS	23
REINFORCING STEEL	24
BRIDGE STANDARD DETAILS	25-29
HIGHWAY STANDARDS	30-41
RIGHT OF WAY MAP	42-44

BRIDGE STANDARD DETAILS

BD 102-93	BEARING PEDESTALS, ETC.
BD 112-93	DIAPHRAGMS & CROSSFRAMES
BD 461-95	32" F-SHAPE CONC. BARRIER
BD 501-93	SUBSTRUCTURE DETAILS
BD 521-93	SUPERSTRUCTURE DETAILS

HIGHWAY STANDARD DETAILS

HD-2	OCT 95	CATCH BASINS, UNDERDRAIN, ETC.
HD-3	OCT 95	CULVERT INLETS & OUTLETS, ETC.
HD-4	OCT 95	CURBING, MUCK EXCAVATION, ETC.
HD-5	OCT 95	DRIVES & ENTRANCES
HD-7	MAY 96	EROSION CONTROL, ETC.
HD-10	MAY 96	MAINTENANCE OF TRAFFIC
HD-11	MAY 96	MAINTENANCE OF TRAFFIC
HD-12	MAY 96	MAINTENANCE OF TRAFFIC
HD-13	OCT 93	PAVEMENT MARKINGS
HD-15	OCT 93	GEOTEXTILES
HD-16	MAY 96	EROSION CONTROL
HD-17	MAY 96	M.E.L.T.

SPECIFICATIONS

DESIGN: AASHTO Standard Specifications for Highway Bridges, 1992 with Interims 1993, 1994, 1995.
CONTRACT: State of Maine, Department of Transportation Standard Specifications for Highways and Bridges, Revisions of April, 1995.

DESIGN LOADING

LIVE LOAD: HS25 STRESS CYCLES: 500,000

MATERIALS

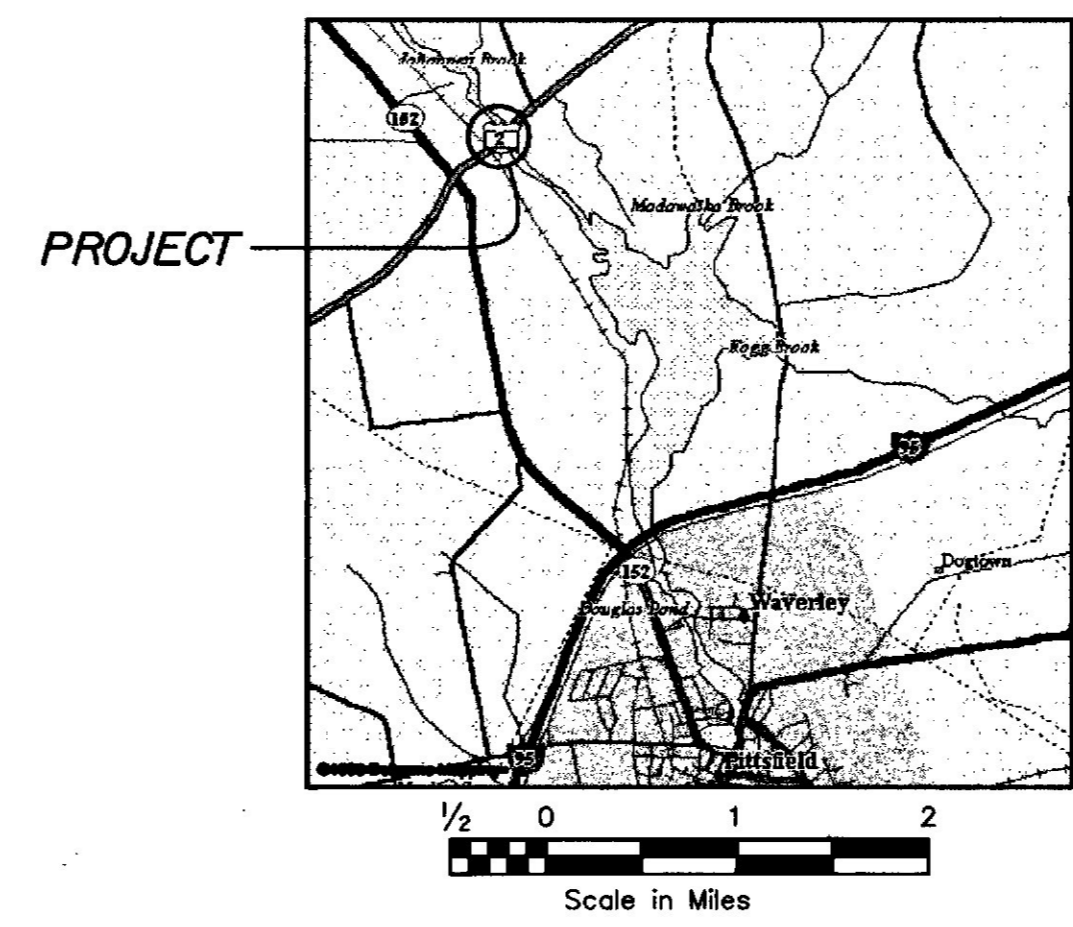
CONCRETE: (Unless Otherwise Noted): CLASS A
REINFORCING STEEL: ASTM A615, GRADE 60
STRUCTURAL STEEL: AASHTO M270, GRADE 50W
High Strength Bolts ASTM A325 Type 3
H-BEAM PILES: AASHTO M270, GRADE 50
PIPE PILES: ASTM A252, GRADE 3

BASIC DESIGN STRESSES

CONCRETE: (Unless otherwise specified) f'c=4,000 psi
REINFORCING STEEL: Fy=60,000 psi
STRUCTURAL STEEL: Fy=50,000 psi
H-BEAM PILES: Fy=50,000 psi
PIPE PILES: Fy=45,000 psi

UTILITIES

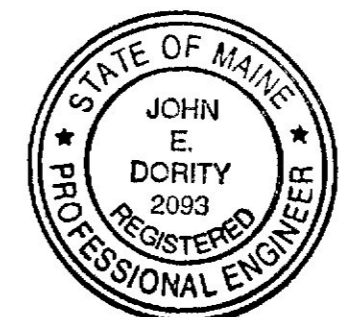
CMP. CO.
HARTLAND TELEPHONE
STATE CABLE T.V.



LOCATION MAP
Map Date: Palmyra, ME 04057, Project, Maine.

All work contemplated under this contract to be governed by and in conformity with the STANDARD SPECIFICATIONS (revision of April, 1995) and supplementals thereto, except as modified on the plans and in the special provisions.

Plans of the existing bridge and a hydrologic report of the bridge site are available for the Contractor's reference at the Bridge Design Office in Augusta. The plans are reproductions of original drawings as prepared for the construction of the bridge and it is very unlikely that the plans will show any construction field changes or any alterations which may have been made to the bridge during its life span. The hydrologic report is based on the interpretation by the Department of Information obtained for the subject site and no assurance is given that the information or the conclusions of the report will be representative of actual conditions at the time of construction.



APPROVED: STATE OF MAINE
DEPARTMENT OF TRANSPORTATION
DATE: 11/8/96
COMMISSIONER
John E. Darity
CHIEF ENGINEER 11/8/96



CASWELL ENGINEERING, P.A.
Structural Consultants
58 Main Street
Brunswick, Maine 04011
(207) 725-6221

TRAFFIC DATA

Current (1994) AADT	4830
Future (2014) AADT	7730
DHV - % of AADT	11
Design Hour Volume	850
% Heavy Trucks (AADT)	13
% Heavy Trucks (DHV)	10
Directional Distribution (DHV)	51
18 Kip Equivalent P2.0	607
18 Kip Equivalent P2.5	574

HYDROLOGIC DATA

Drainage Area	+282J	sq. mi.
Design Discharge (Q50)	+8,500	cf/s
Check Discharge (Q100)	+10,000	cf/s
Headwater Elevation (Q50)	+222.0	
Headwater Elevation (Q100)	+224J	
Discharge Velocity (Q50)	+3.4	fps
Discharge Velocity (Q100)	+3.5	fps
Q1	+2,700	cf/s

UNITED STATES
DEPARTMENT OF TRANSPORTATION
FEDERAL HIGHWAY ADMINISTRATION
REGION 1

APPROVED: _____ DATE: _____
DIVISION ADMINISTRATOR DATE

66-29

X

ESTIMATED QUANTITIES

ITEM NO.	DESCRIPTION	QUANTITY	UNIT
201.23	Removing Single Tree Top Only	2	EA.
201.24	Removing Stump	2	EA.
202.19	Removing Existing Bridge	1	LS
203.20	Common Excavation	5,350	CY
203.231	Disposal Of Riverbed Excavation	30	CY
203.24	Common Borrow	105	CY
203.25	Granular Borrow	275	CY
206.082	Structural Earth Excav-Major Structures	50	CY
304.10	Aggregate Subbase Course-Gravel	5,100	CY
403.07	Hot Bituminous Pavement, GradIng B	1,510	T
403.10	Hot Bituminous Pavement, GradIng D	550	T
403.101	Hot Bit. Pvmf Grd D (Sidewalks, Drives, Islands, And Incd.)	11	T
403.121	Hot Bituminous Pavement, GradIng E (Shimming)	20	T
409.15	Bituminous Tack Coat (Applied)	100	G
501.231	Dynamic Loading Test	2	EA
501.253	Pile Protective Coating	1	LS
501.50	Steel H-Beam Piles 89 Lbs/Ft, Delivered	925	LF
501.501	Steel H-Beam Piles 89 Lbs/Ft, In Place	925	LF
501.70	Steel Pipe Piles, Delivered	535	LF
501.701	Steel Pipe Piles, In Place	535	LF
501.90	Pile Tips	17	EA
501.91	Pile Splices	3	EA
501.92	Pile Driving Equipment Mobilization	1	LS
502.21	Struc. Conc. Abuts & Retaining Walls	40	CY
502.23	Struc. Conc. Piers	41	CY
502.26	Struc Conc Rdwy & Sw Slab On Steel Bridges	1	LS
502.31	Structural Concrete Approach Slabs	1	LS
503.12	Reinforcing Steel, Fab & Delivered	82,100	LB
503.13	Reinforcing Steel, Placing	82,100	LB
504.70	Structural Steel Fab & Delivered	1	LS
504.71	Structural Steel Erection	1	LS
505.08	Shear Connectors	1	LS
508.13	Membrane Waterproofing	1	LS
510.10	Spec Det 22' Rdwy, Veh & Ped Traf Not Sep	1	LS
512.081	French Drains	1	LS
514.06	Curing Box For Concrete Cylinders	1	EA.
515.21	Protective Coating For Concrete Surfaces	1	LS
520.201	Self Levelling Joint with Nosing	1	LS
526.301	Temporary Conc. Barrier Type I	1	LS
526.32	Permanent Conc. Barrier Type III	404	LF
603.19	24 Inch Culvert Pipe Option I	120	LF
605.09	6 Inch Underdrain Type B	350	LF
605.10	6 Inch Underdrain Outlet	40	LF
606.1721	Bridge Transition - Type "I"	4	EA
606.265	Term. End-Single Rail-Galvanized Steel	2	EA.
606.35	Guardrail Del. Post	7	EA.
606.55	Guardrail Type 3-Single Rail	988	LF
606.59	Guardrail Type 3-15 Foot Radius And Less	63	LF
606.76	Modified Eccentric Loader Terminal	2	EA.
609.31	Curb Type 3	312	LF
610.08	Plain Riprap	490	CY
610.18	Stone Ditch Protection	33	CY
612.06	Bituminous Sealing-Black	35	SY

ESTIMATED QUANTITIES

ITEM NO.	DESCRIPTION	QUANTITY	UNIT
613.319	Temporary Erosion Control Blanket	1,900	SY
615.07	Loam	360	CY
616.08	Sodding	22	SY
618.14	Seeding Method Number 2	26	UN
618.141	Seeding Method Number 3	32	UN
618.15	Temporary Seeding	85	LB
618.19	Refertilization	175	LB
618.20	Annual Rye Grass Seed	8	LB
618.25	Applied Water	1	MG
619.12	Mulch	115	UN
620.58	Erosion Control Geotextile	100	SY
621.025	Evergreen Trees (3'-4') Group A	14	EA
621.038	Evergreen Trees (5'-6') Group B	3	EA
621.273	Large Deciduous Trees (2"-2 1/2") Group A	4	EA
621.552	Deciduous Shrubs (3'-4') Group A	2	EA
627.71	4 Inch White Pvt. Mark. Line	2,800	LF
627.73	4 Inch Yellow Pvt. Mark. Line	1,400	LF
627.77	Removing Pavement Markings	125	SF
627.78	Temp 4" Painted Pave Mark. Line, White Or Yellow	1,500	LF
629.05	Hand Labor, Straight Time	10	MH
631.12	All Purpose Excavator (Inc. Op.)	10	HR
631.172	Truck-Large (Inc. Op.)	10	HR
637.07	Sprinkling	48	MG
637.08	Calclum Chloride	5	T
639.18	Field Office Type A	1	EA.
639.22	Testing Facilities Bituminous Mixes	1	LS
639.23	Testing Facilities Conc.	1	LS
652.31	Type I Barricade	10	EA.
652.311	Type II Barricade	10	EA.
652.33	Drum	20	EA.
652.34	Cone	50	EA.
652.35	Construction Signs	600	SF
652.361	Maintenance Of Traffic Control Devices	1	LS
652.38	Flaggers	250	MH
656.50	Baled Hay, In Place	15	EA.
656.51	Sandbag, In Place	15	EA.
656.55	Dumped Stone	6	CY
656.631	15' Temporary Silt Fence	2,000	LF
656.632	30' Temporary Silt Fence	720	LF
656.64	Boom Supported Floating Silt Fence	300	LF
657.24	Seeding Pits	39	UN
659.10	Mobilization	1	LS
660.21	On the Job Training	1,000	MH
639.21	Testing Facilities - Soils	1	LS
652.312	Type III	6	EA

ESTIMATE OF LUMP SUM QUANTITIES

ITEM NO.	DESCRIPTION	QUANTITY	UNIT
502.26	Struc Conc Rdwy & Sw Slab on Steel Bridges	311	CY
502.31	Structural Concrete Approach Slab	30	CY
504.70	Structural Steel Fab & Delivered	261,000	LB
504.71	Structural Steel Erection	261,000	LB
505.08	Shear Connectors	2,550	EA.
508.13	Membrane Waterproofing	900	SY
512.08	French Drains	115	LF
515.21	Protective Coating For Concrete Surfaces	350	SY

- The utilities involved in this project are: CMP Co., Hartland Telephone, State Cable T.V.
- All utility facilities shall be adjusted by the respective utilities unless noted.
- During construction, traffic will be maintained on a temporary bridge. Two-way traffic shall be maintained in a 22 foot min. traveled way at all times.
- Place a 1'-6" wide strip of sod on the side slopes along the top of the riprap.
- All embankment material placed in water shall be granular borrow meeting the requirements of Subsection 703.19 Material for Underwater Backfill, except as otherwise shown.
- The clearing limits as shown on the plans are approximate. The actual clearing limits, for payment, shall be established in the field by the Engineer. Payment for clearing will be incidental to contract items.
- The grubbing depth has been estimated as 6" in field areas and 12" in wooded areas.
- All ditch elevations shown on the cross sections are for the finished ditch flow line.
- If foundation material is required under culverts, it shall meet the requirements for Granular Borrow-Underwater Backfill and will be paid for as Granular Borrow.
- Do not excavate for Aggregate Subbase Course where existing material is suitable as determined by the Engineer. Payment for shaping and compacting of the existing subbase and layers of new subbase 6" or less thick, in areas where the Engineer directs the Contractor not to excavate to the subgrade line shown on the plans, will be made in accordance with Subsection 104.03 Extra Work.
- Paved entrances shall be constructed with 2" hot bituminous pavement and 12" aggregate subbase course-gravel.
- Unpaved entrances shall be constructed with 14" aggregate subbase course-gravel.
- All joints between existing and proposed hot bituminous pavement shall be butted, unless otherwise directed by the Engineer. Payment will be incidental to item 403.
- A 3' Paved Apron as shown on plans shall be placed all gravel entrances unless otherwise directed by the Engineer.
- Actual location of sod shall be determined in the field by the Engineer.
- Sodded gutters shall be constructed, after paving and shoulder work is completed, where it is apparent that runoff will cause continual erosion.
- Three guardrail delineator posts shall be installed at each guard rail run: two leading end, one trailing end.
- A guardrail delineator post shall be installed at Type "B" Underdrain Outlet.
- Curb type 3 to be installed with mold 2 and sealed with bituminous sealing, black where directed.
- Mulch shall be applied in all seeded areas unless otherwise directed by the Engineer.
- All slopes shall be seeded as follows:

Seeding Method *2:	Seeding Method *3:
103*50 to 106*50 LT - Foreslopes	103*50 to 106*50 LT - Backslopes
103*50 to 105*00 RT - Foreslopes	106*50 to Bridge LT - All Slopes
114*00 to 117*50 LT - All Slopes	105*00 to Bridge RT - All Slopes
113*25 to 117*50 RT - Foreslopes	Bridge to 114*00 LT - All Slopes
	Bridge to 113*25 RT - All Slopes
	113*25 to 117*50 RT - Backslopes
- The existing abutments and piles shall be removed within the proposed granular borrow limits and 1'-0" of the proposed pile locations as directed by the Engineer. The existing bridge superstructure shall be removed in its entirety. All material shall become property of the Contractor except 22BB89 and 22BB62 floor stringers. The floor stringers shall be delivered to the nearest MDOT maintenance yard. Payment will be considered incidental to item 209.19 Removing Existing Bridge.
- The existing bituminous pavement within 1'-0" of the proposed aggregate subbase course-gravel shall be broken up or removed as directed by the Engineer. Payment will be considered incidental to related contract items.
- Payment for disposal of riverbed excavation from pile pile pre-auguring will be made under item 203.231 Disposal of Riverbed Excavation.

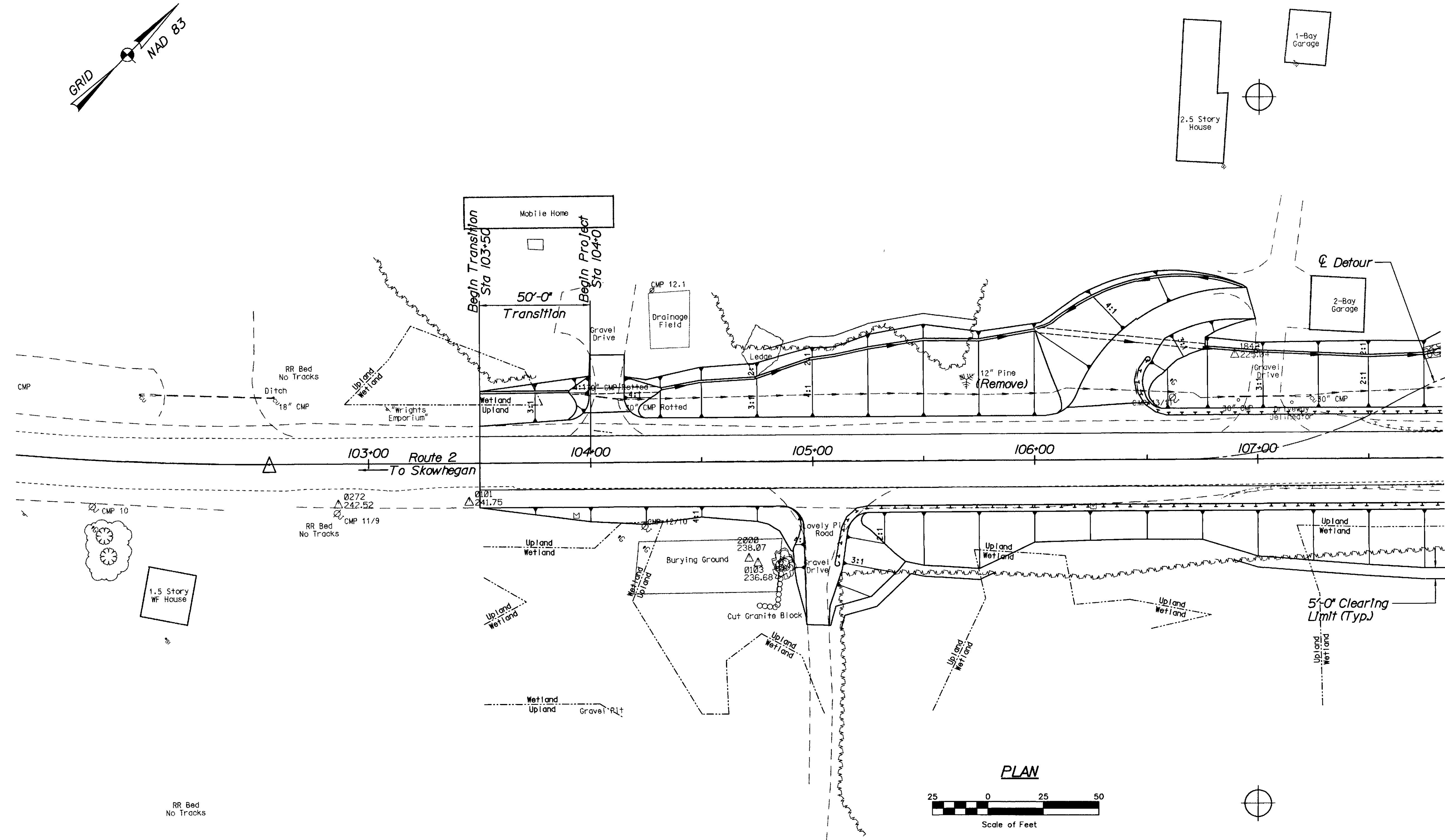
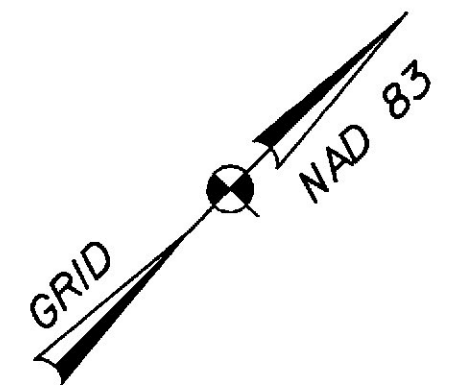
PROJECT DESIGN ENGINEER: EBC
 CHECKED: JMB
 REVISIONS:
 FIELD CHANGES:

DATE: 11-96
 BY: JCC
 DATE: 11-96
 BY: JMB

PLANS

STATE OF MAINE
 DEPARTMENT OF TRANSPORTATION

IRON BRIDGE
 OVER
SEBASTICOOK RIVER
 IN THE TOWN OF
PALMYRA
 SOMERSET COUNTY
ESTIMATED QUANTITIES
 AUGUSTA, MAINE



N 44-40'-23.11" E

PROJECT DESIGN ENGINEER	EBC	DATE	11-96
DESIGN-DETAILED	JCC	DATE	11-96
CHECKED	JMB	DATE	11-96
REVISIONS			
FIELD CHANGES			

ITEM 201.23
REMOVING SINGLE TREE
TOP ONLY
 Sta 105+69.5 36.4' LT 12" Pine

ITEM 201.24
REMOVING STUMP
 Sta 105+69.5 36.4' LT 12" Pine

ITEM 621.038
EVERGREEN TREES (5'-6') GROUP B

~Picea Pungens (Colorado Spruce)	Sta 105+50 LT 45'-0"
~Picea Pungens (Colorado Spruce)	Sta 105+62 LT 35'-0"
~Picea Pungens (Colorado Spruce)	Sta 105+75 LT 45'-0"

STATION	WIDTH	TYPE	NOTES
104+06 LT	16'	GRAVEL	Skewed Ahead 2'
105+05 RT	16'	PAVED	Skewed Back 2'
106+20 LT	14'	GRAVEL	70' R Curve

ITEM 603.19
24 INCH CULVERT PIPE OPTION 1
 Sta 103+90.2 32.0' LT to Sta 104+31.9 33' LT
 Sta 106+2.3 58.8' LT to Sta 106+76.3 50.4' LT

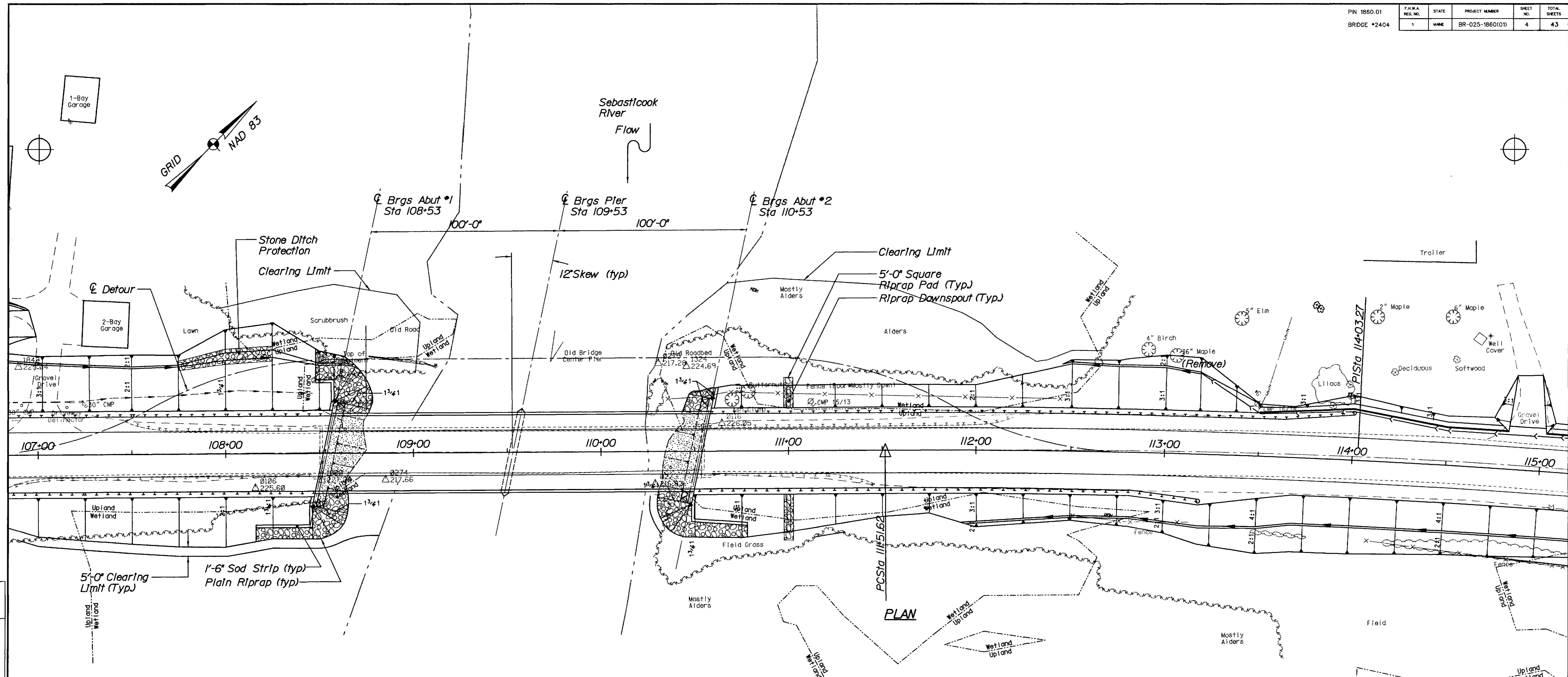
ITEM 656.631
15 INCH TEMPORARY SILT FENCE
 Sta 103+50 to 108+50 LT 500 LF
 Sta 103+50 to 106+50 RT 300 LF

STATE OF MAINE
 DEPARTMENT OF TRANSPORTATION

IRON BRIDGE
 OVER
SEBASTICOOK RIVER
 IN THE TOWN OF
PALMYRA
 SOMERSET COUNTY
GENERAL PLAN

BM Datum: NGVD29

AUGUSTA, MAINE



PROJECT DESIGN ENGINEER	EBC	DATE	11-96
CHECKED	JCC	DATE	11-96
REVISIONS	JAB	DATE	11-96
FIELD CHANGES		DATE	

- ITEM 621.025**
EVERGREEN TREES (3'-4') GROUP A
 4~*Picea glauca* (White Spruce) . . . Sta 108+10 - 108+40 35'-40' LT
 3~*Picea glauca* (White Spruce) . . . Sta 110+85 - 111+10 35'-40' LT
 4~*Pinus strobus* (White Pine) . . . Sta 108+00 - 108+40 60'-65' LT
 3~*Pinus strobus* (White Pine) . . . Sta 110+65 - 110+80 50'-55' LT
- ITEM 621.273**
LARGE DECIDUOUS TREES (2' - 2.5') GROUP A
 2~*Acer rubrum* (Red Maple) Sta 107+70 - 108+00 40' LT
 1~*Acer rubrum* (Red Maple) Sta 110+90 75' LT
 1~*Acer rubrum* (Red Maple) Sta 111+30 40' LT
- ITEM 201.23**
REMOVING SINGLE TREE TOP ONLY
 Sta 113+05.3 52.2' LT 36" Maple
- ITEM 201.24**
REMOVING STUMP
 Sta 113+05.3 52.2' LT 36" Maple

- CONSTRUCT ENTRANCE**
- | STATION | WIDTH | TYPE | NOTES |
|-----------|-------|--------|----------------|
| 114+94 LT | 16' | GRAVEL | SKEWED BACK 2' |
- ITEM 621.552**
DECIDUOUS SHRUBS (3'-4') GROUP A
 2~*Syringa vulgaris* (Alba) Sta 113+80 80.0' LT
- ITEM 609.31**
CURB TYPE 3
 Sta 113+50 23' LT to Sta 114+82 20' LT 133.8 LF
- ITEM 605.09**
6 INCH UNDERDRAIN TYPE B
 Sta 113+50 22.9' LT to Sta 117+00 20.5' LT 350 LF
- ITEM 605.10**
6 INCH UNDERDRAIN OUTLET
 Sta 113+18.1 42.2' LT to Sta 113+50 22.9' LT 40 LF

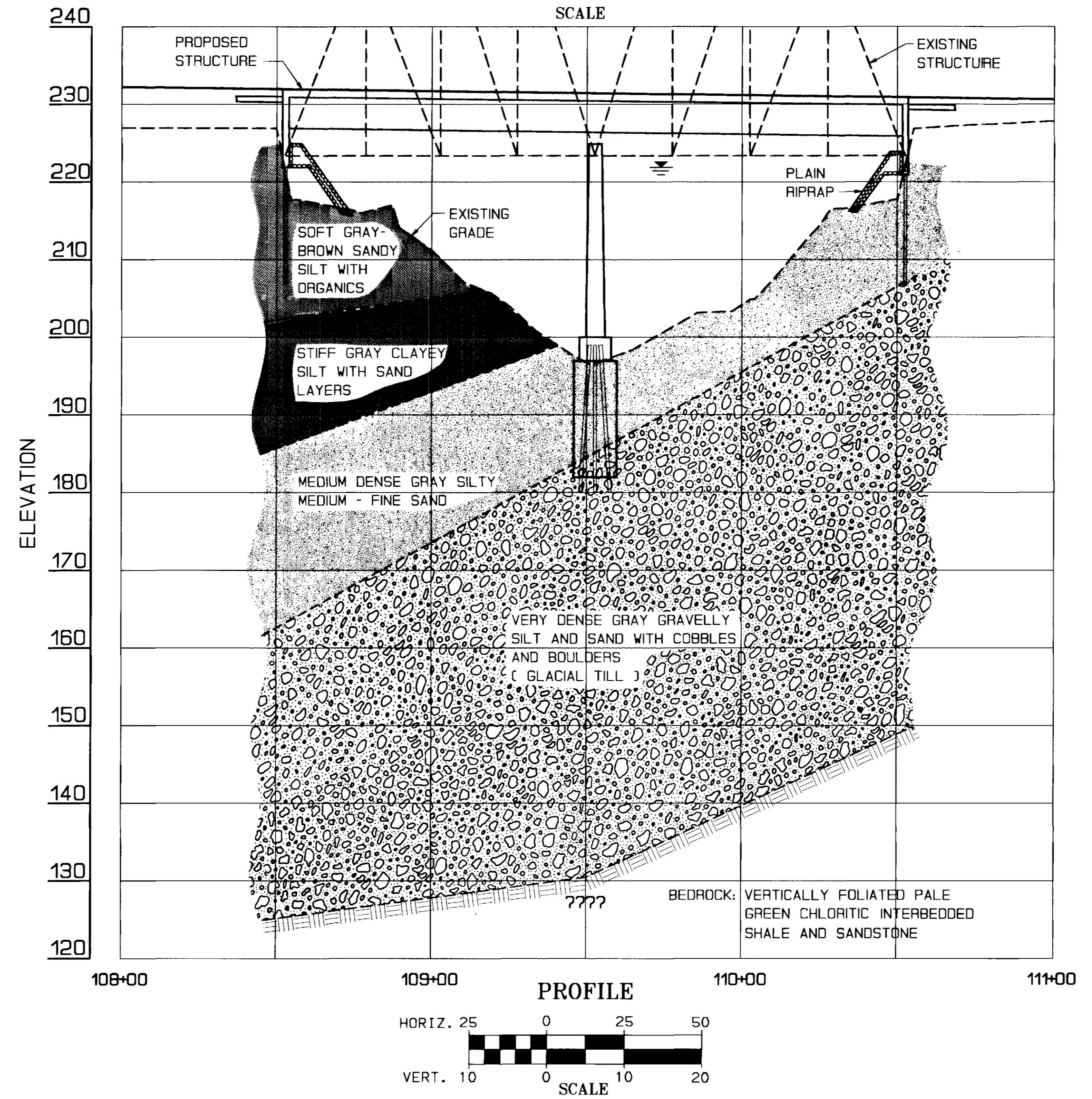
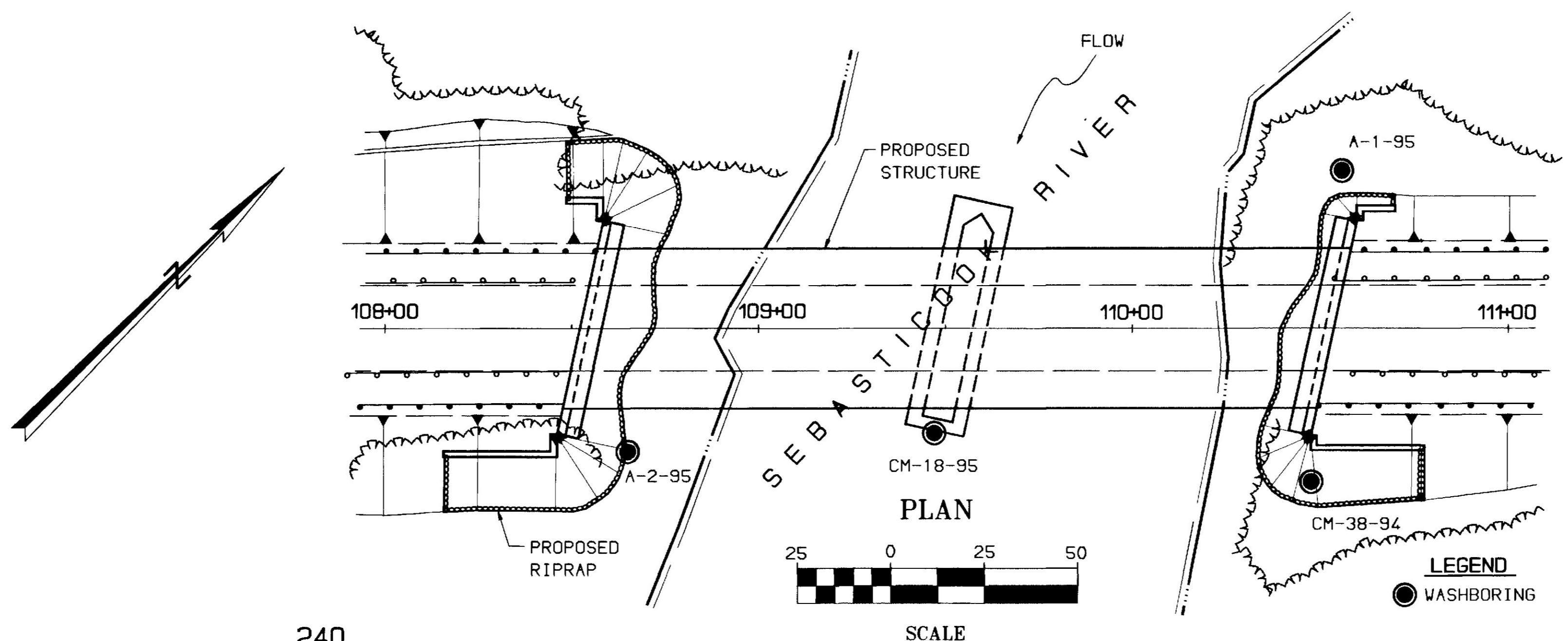
- ITEM 656.632**
30 INCH TEMPORARY SILT FENCE
 Sta 108+50 to River LT 70 LF
 Sta 106+50 to River RT 230 LF
 River to Sta 112+00 RT 190 LF
 River to Sta 112+50 LT 230 LF
- ITEM 656.631**
15 INCH TEMPORARY SILT FENCE
 Sta 112+50 to 117+50 LT 500 LF
 Sta 112+00 to 117+50 RT 550 LF

CURVE DATA
 PI Sta 114+03.27
 $\Delta = 6^\circ - 17' - 5.31''$
 $D = 1' - 15' - 00''$
 $T = 251.64'$
 $L = 502.79'$
 $R = 4583.66'$
 $E = 6.90'$

STATE OF MAINE
 DEPARTMENT OF TRANSPORTATION

IRON BRIDGE
 OVER
SEBASTICOOK RIVER
 IN THE TOWN OF
PALMYRA
 SOMERSET COUNTY
GENERAL PLAN

AUGUSTA, MAINE



PROJECT DESIGN ENGINEER	DESIGN-DETAILED	BY	DATE
	CHECKED		
	REVISIONS		
	FIELD CHANGES		

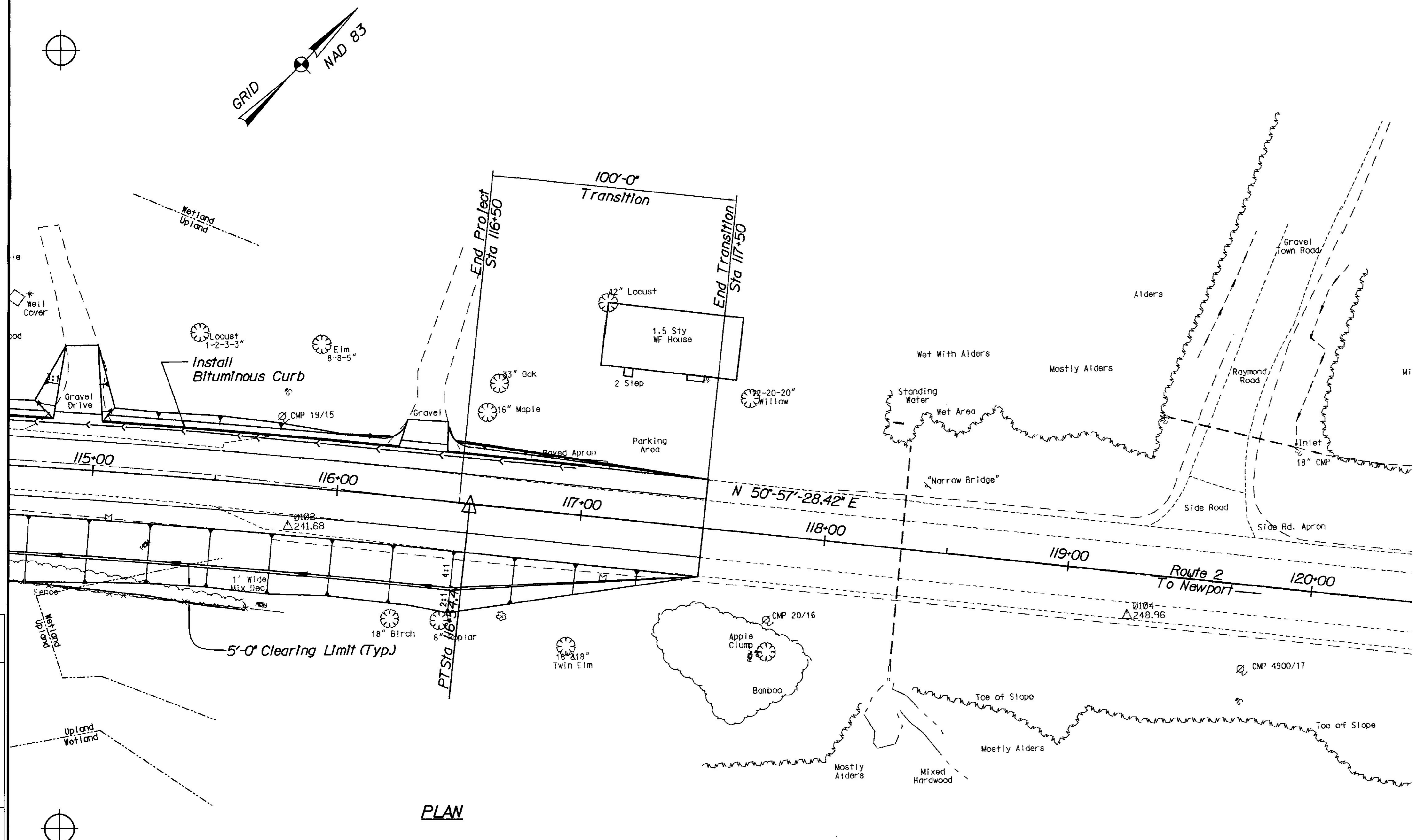
PLANS

30 JUN 93 01:01:00

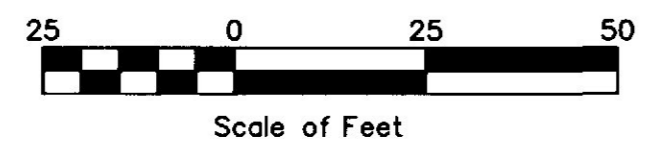
STATE OF MAINE
DEPARTMENT OF TRANSPORTATION

IRON BRIDGE
over the
SEBASTICOOK RIVER
in the town of
PALMYRA
SOMERSET COUNTY
FOUNDATION SURVEY

SHEET OF AUGUSTA, ME.



PLAN

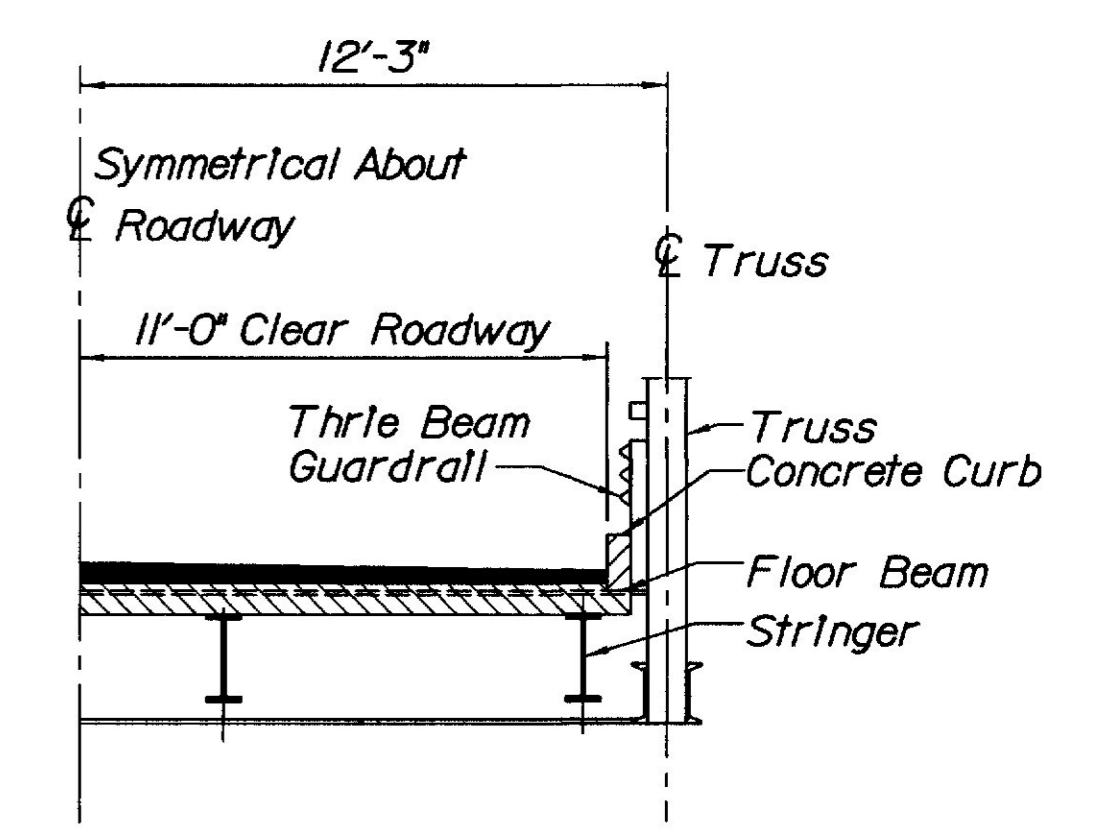


PROJECT DESIGN ENGINEER	EBC
DESIGN-DETAILED	JCC
CHECKED	JMB
REVISIONS	
FIELD CHANGES	

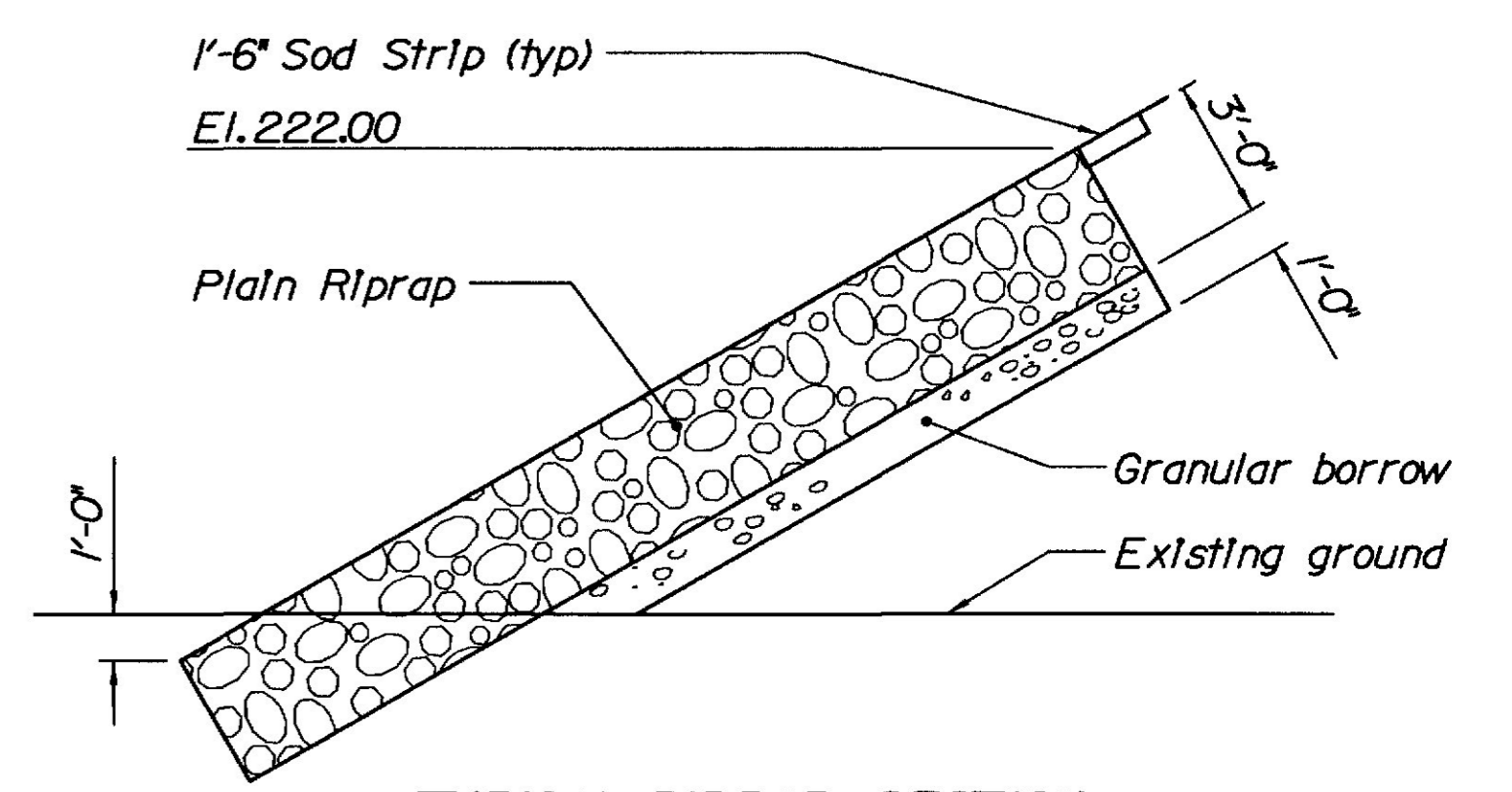
PLANS

ITEM 609.31
CURB TYPE 3
Sta 115+02.5 20' LT to Sta 116+23 20' LT 121.4'
Sta 116+43.2 to Sta 117+00 20' LT 56.8'

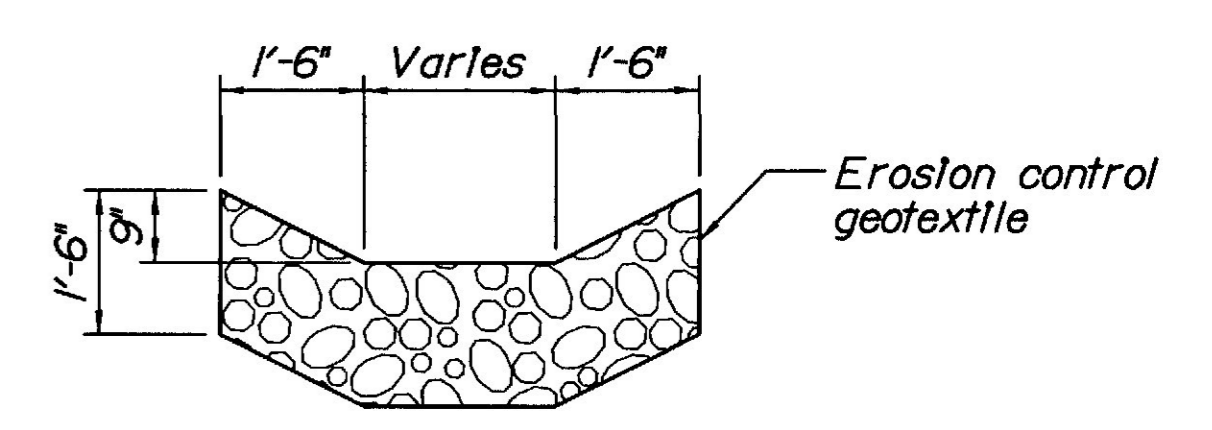
STATION	WIDTH	TYPE	NOTES
116+33 LT	20'	GRAVEL	CONSTRUCT ENTRANCE SKEWED AHEAD 3'



EXISTING BRIDGE SECTION



TYPICAL RIPRAP SECTION
All Bedding Material placed in the embankment slope under the riprap and within 12 inches of the back side of riprap areas shall meet the requirements of Subsection 703.19, Material for Underwater Backfill.



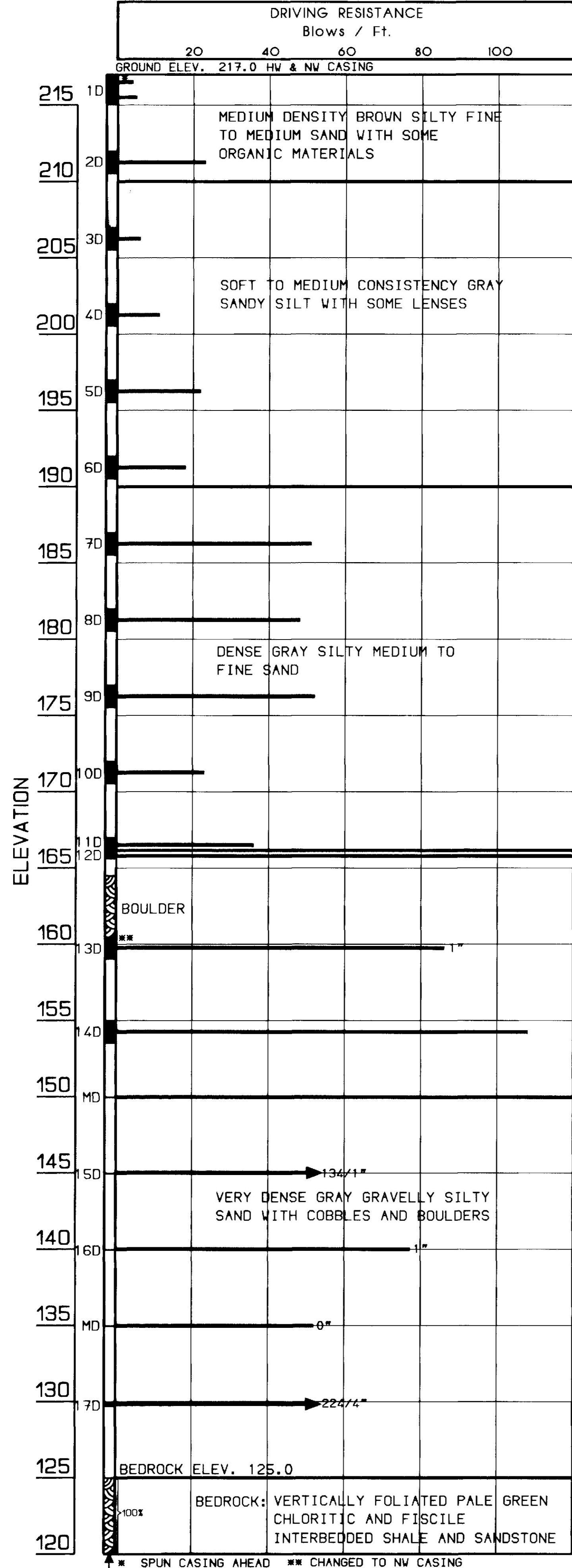
STONE DITCH PROTECTION & RIPRAP DOWNSPOUT

STATE OF MAINE
DEPARTMENT OF TRANSPORTATION

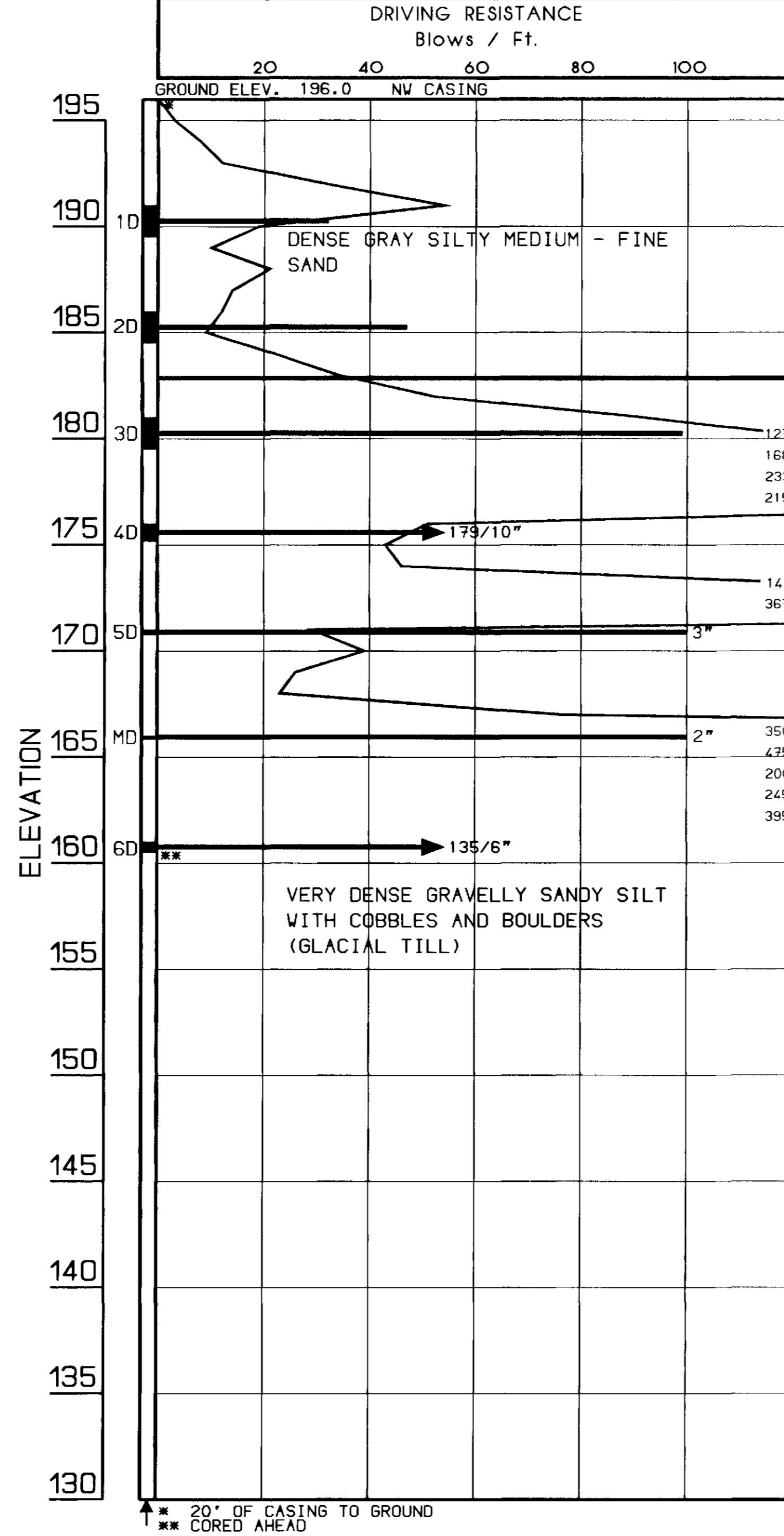
IRON BRIDGE
OVER
SEBASTICOOK RIVER
IN THE TOWN OF
PALMYRA
SOMERSET COUNTY
GENERAL PLAN

AUGUSTA, MAINE

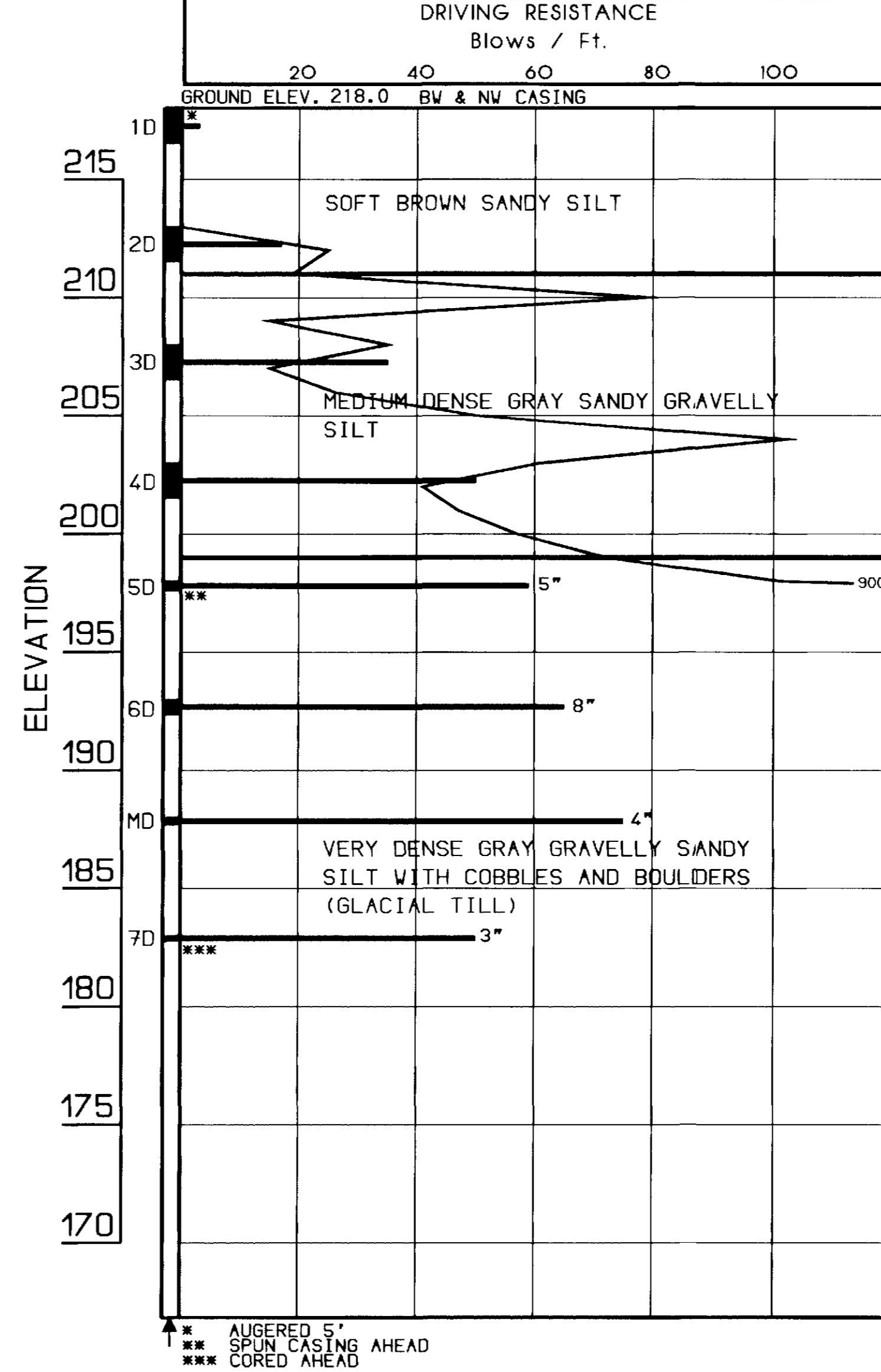
BORING A-2-95 STATION 108+65, 33' RT.



BORING STATION CM-18-95 109+47, 28' RT.



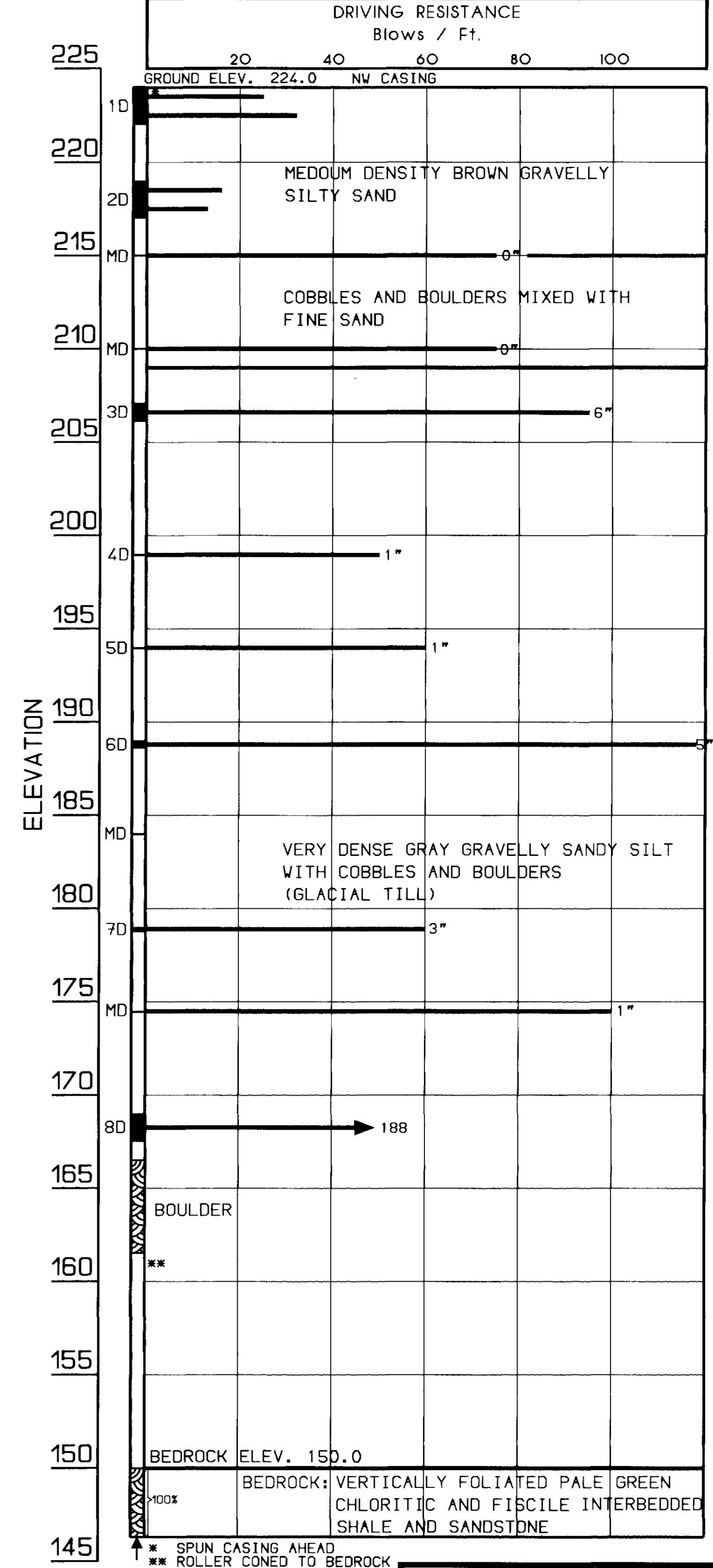
BORING STATION CM-38-94 110+48, 41' RT.



BORING NOTES

- ☉ All samples and vane are made ahead of casing
- ☉ Water Elevation
- ☉ Number of blows required to drive extra heavy casing one foot with 400 ft. lbs. of energy per blow
- ☉ Location of sample or sample attempt
- ☉ Number and type of dry sample
- ID Split spoon sampler
- IC 2" O.D. 16 ga. seamless tubing
- IU 3 1/2" O.D. 16 ga. seamless tubing
- IW Wash sample and number
- MD Unsuccessful sample attempt and type of sampler
- ☉ Number of blows required to drive spoon or tubing one foot with 350 ft. lbs. of energy per blow
- H Sampling spoon or seamless tubing driven by static weight of drill rods and hammer
- P Piston sampler
- ☉ Field vane test
- ☉ Bottom of boring (may not be bottom of soil strata)
- ☉ Refusal of drill rods or casing (may not be ledge)
- ☉ Locations cored by diamond bit and percent recovery of rock

BORING STATION A-1-95 110+56, 42' LT.



STATE OF MAINE
DEPARTMENT OF TRANSPORTATION

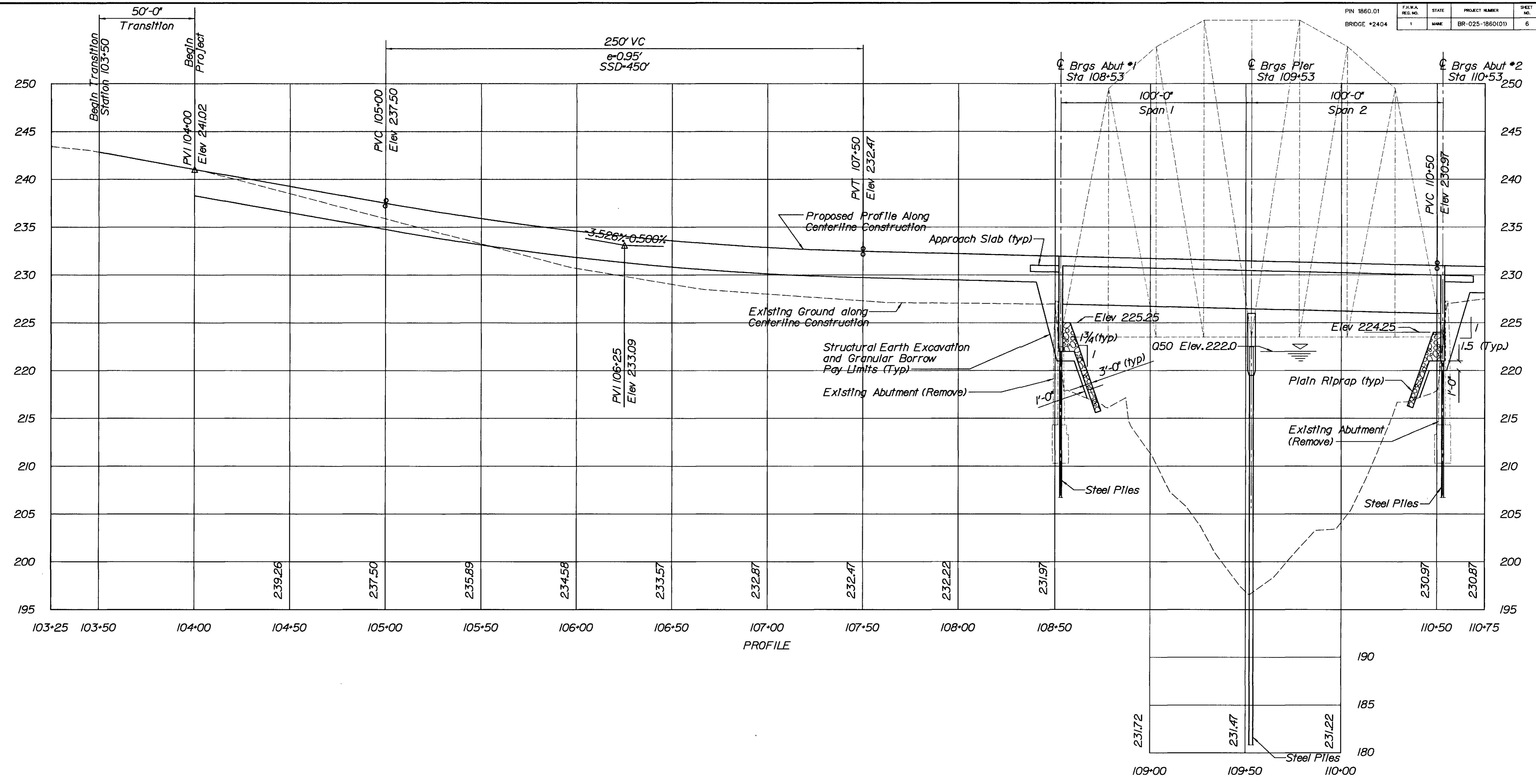
IRON BRIDGE
over the
SEBASTICOOK RIVER
in the town of
PALMYRA
SOMERSET COUNTY
BORING DETAILS

SHEET OF AUGUSTA, ME.

PROJECT DESIGN ENGINEER	DATE
DESIGN-DETAILED	
CHECKED	
REVISIONS	
FIELD CHANGES	

PLANS

30 JUN 93-01:01:00

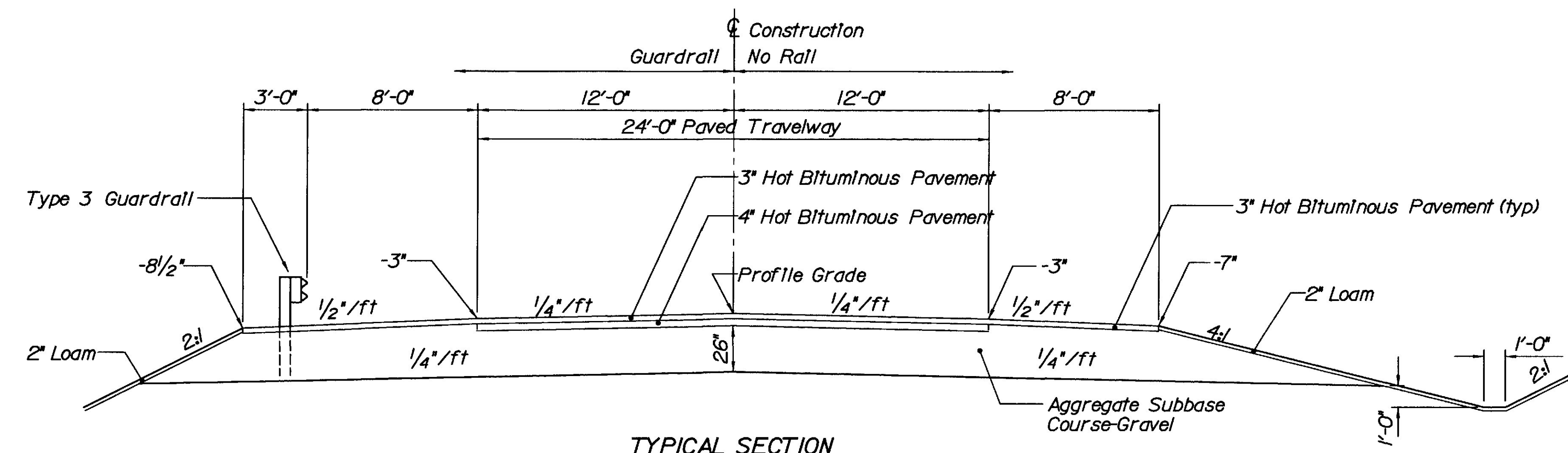


PROJECT DESIGN ENGINEER	EBC	DATE	11-96
DESIGN-DETAILED	JCC	BY	JCC
CHECKED	JMB	DATE	11-96
REVISIONS			
FIELD CHANGES			

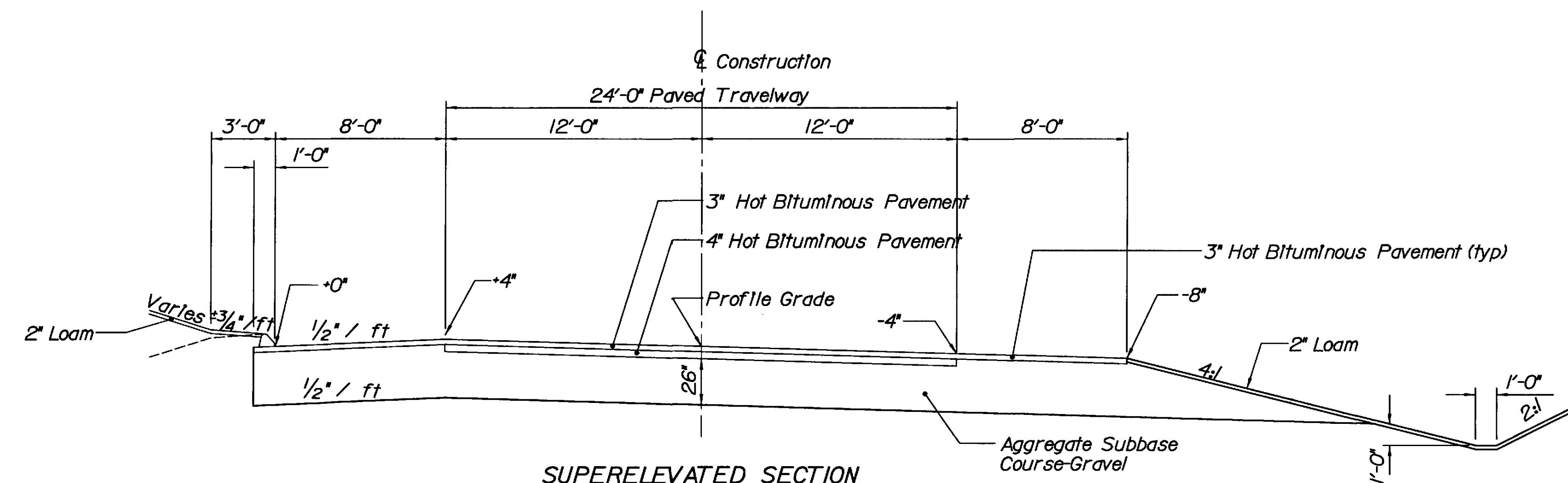
PLANS

STATE OF MAINE
 DEPARTMENT OF TRANSPORTATION

IRON BRIDGE
 OVER
 SEBASTICOOK RIVER
 IN THE TOWN OF
 PALMYRA
 SOMERSET COUNTY
PROFILE
 AUGUSTA, MAINE



TYPICAL SECTION



SUPERELEVATED SECTION

NOTES:

1. The pavement, base and subbase depths as shown on the plans are intended to be nominal.
2. When superelevation exceeds the slope of the low side shoulder, the low side shoulder shall have the same slope as the travelway.
3. Crowns for both normal and superelevation sections for all courses of subbase and pavement shall be straight.

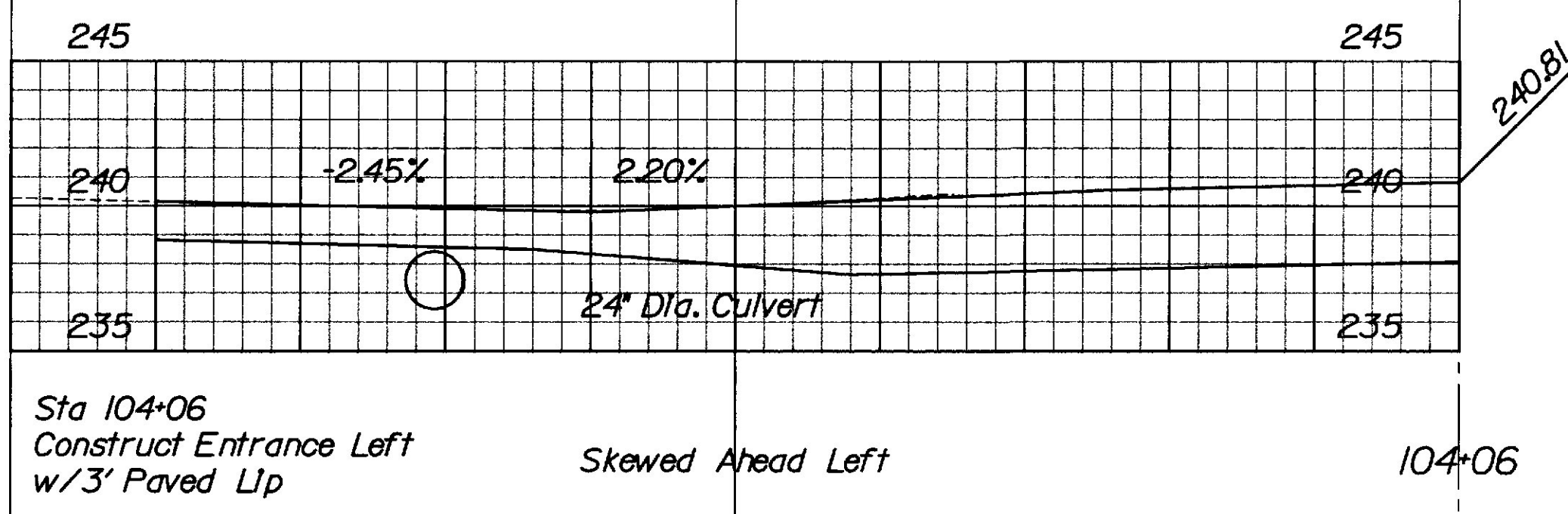
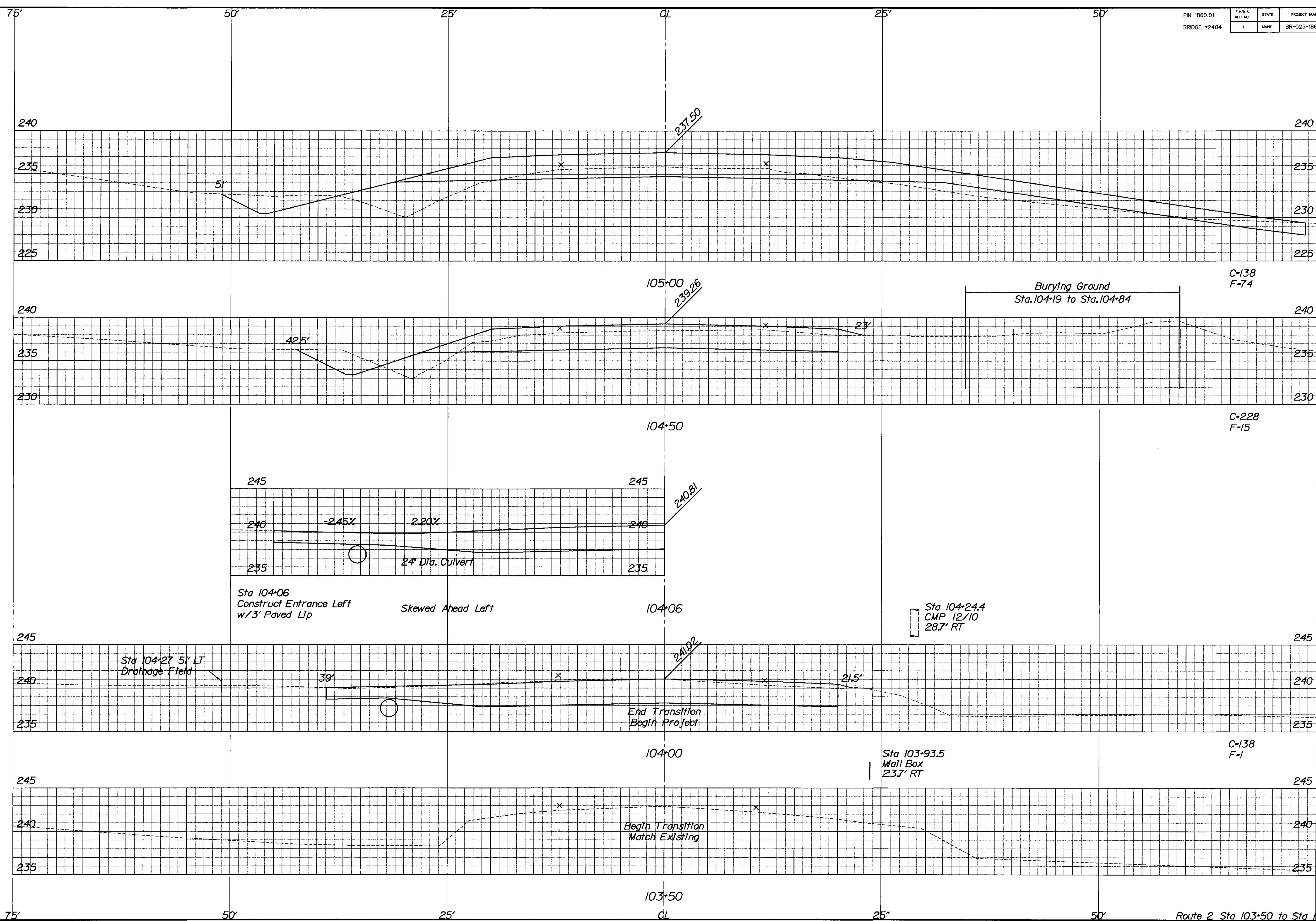
PROJECT DESIGN ENGINEER	ERC	DATE
DESIGN-DETAILED	JCC	11-98
CHECKED	JAB	11-98
REVISIONS		
FIELD CHANGES		

PLANS

STATE OF MAINE
DEPARTMENT OF TRANSPORTATION

IRON BRIDGE
OVER
SEBASTICOOK RIVER
IN THE TOWN OF
PALMYRA
SOMERSET COUNTY
TYPICAL SECTIONS

AUGUSTA, MAINE



Sta 104+06
Construct Entrance Left
w/3' Paved Lip

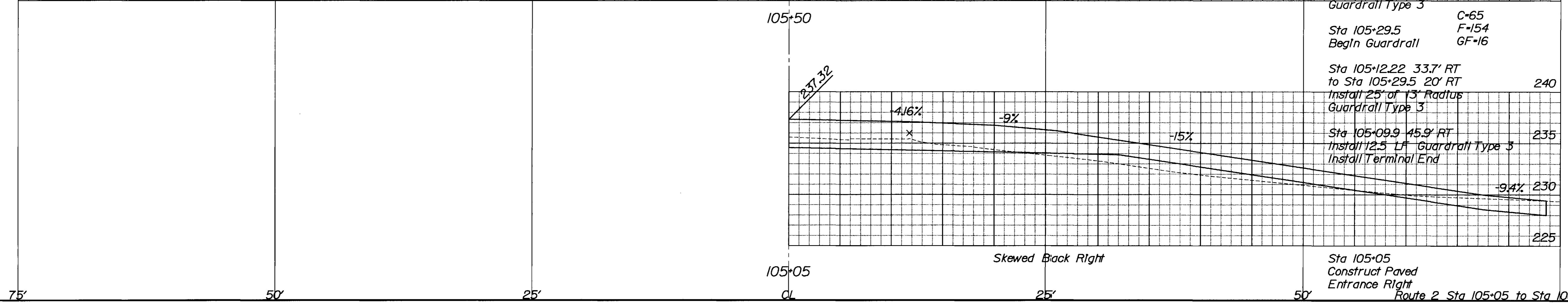
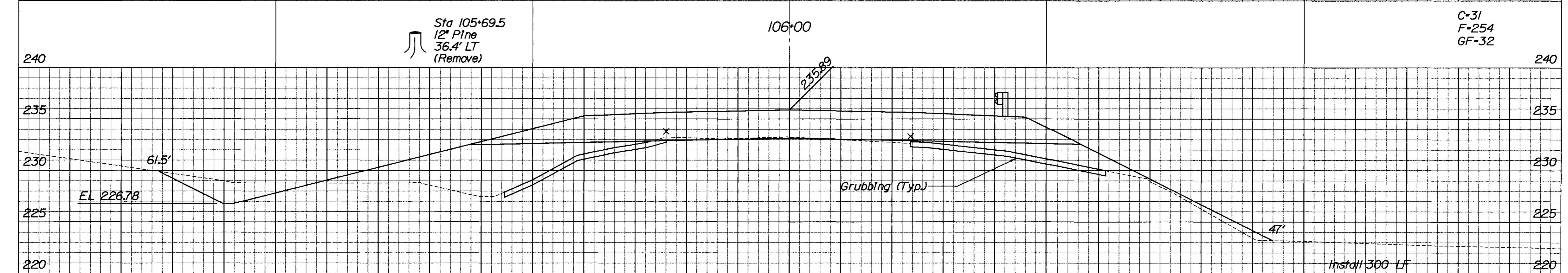
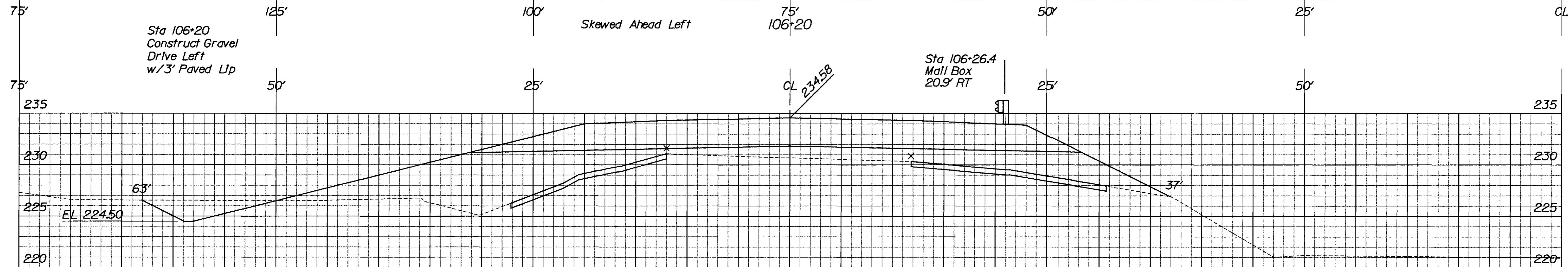
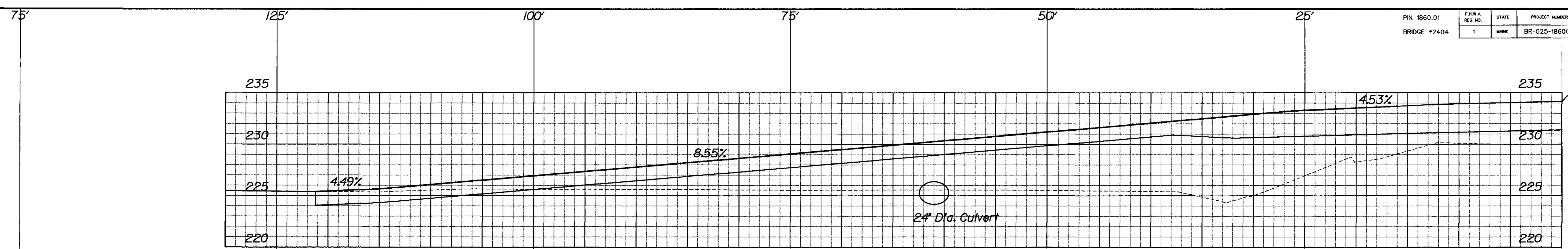
Skewed Ahead Left

Sta 104+24.4
CMP 12/10
28.7' RT

PROJECT DESIGN ENGINEER	DATE
DESIGN DETAILED	11-98
CHECKED	11-98
REVISIONS	
FIELD CHANGES	

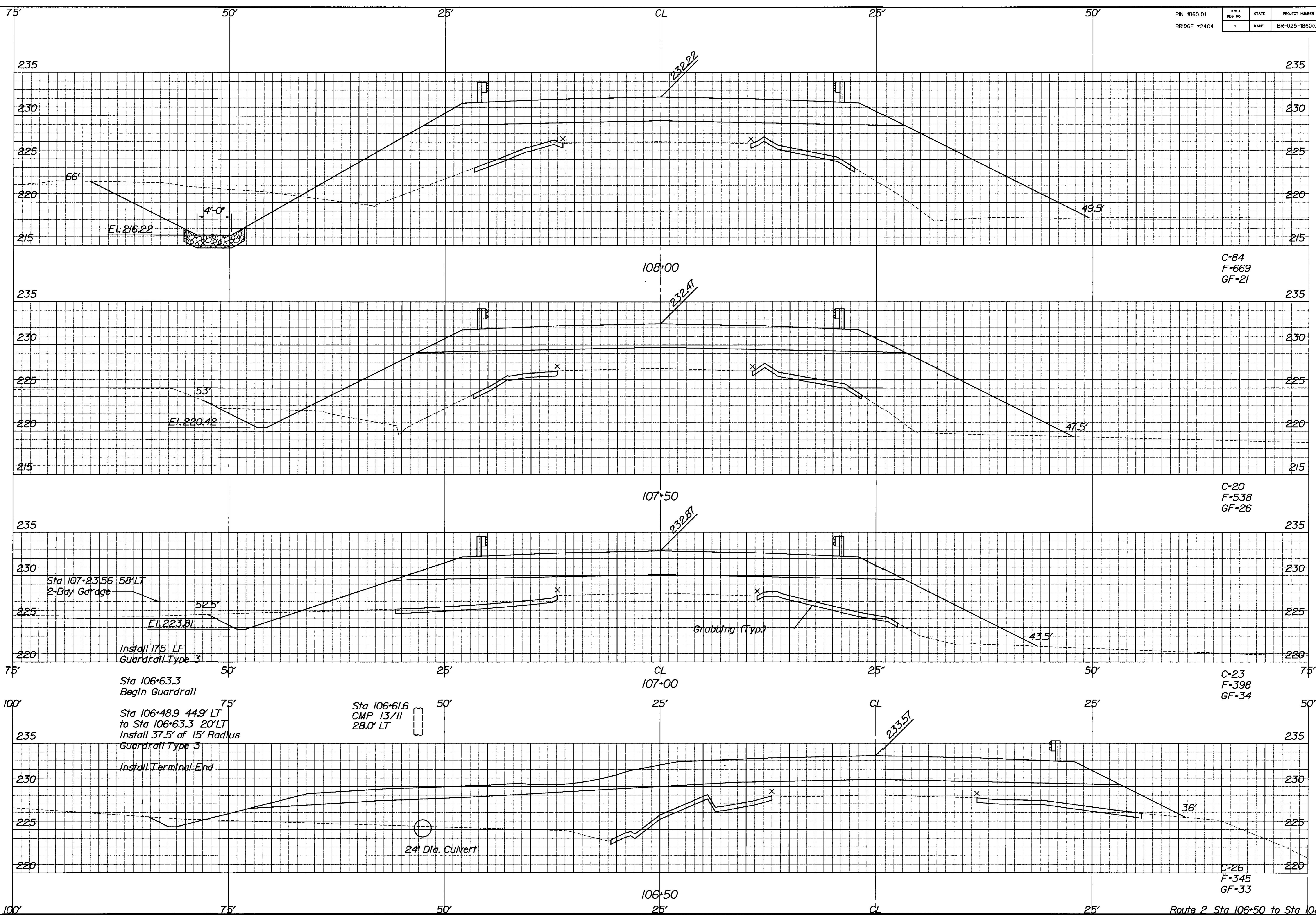
PLANS

BY JCC
ERC JAB



PROJECT DESIGN ENGINEER	EBC	DATE	11-96
CHECKED	JCC	DATE	11-96
REVISIONS	JAB	DATE	11-96
FIELD CHANGES		DATE	

PLANS



C-84
F-669
GF-21

C-20
F-538
GF-26

C-23
F-398
GF-34

C-26
F-345
GF-33

Sta 107+23.56 58' LT
2-Bay Garage

El. 223.81

Install 175 LF
Guardrail Type 3

Sta 106+63.3
Begin Guardrail

Sta 106+48.9 44.9' LT
to Sta 106+63.3 20' LT
Install 37.5' of 15' Radius
Guardrail Type 3

Install Terminal End

Sta 106+61.6
CMP 13/11
28.0' LT

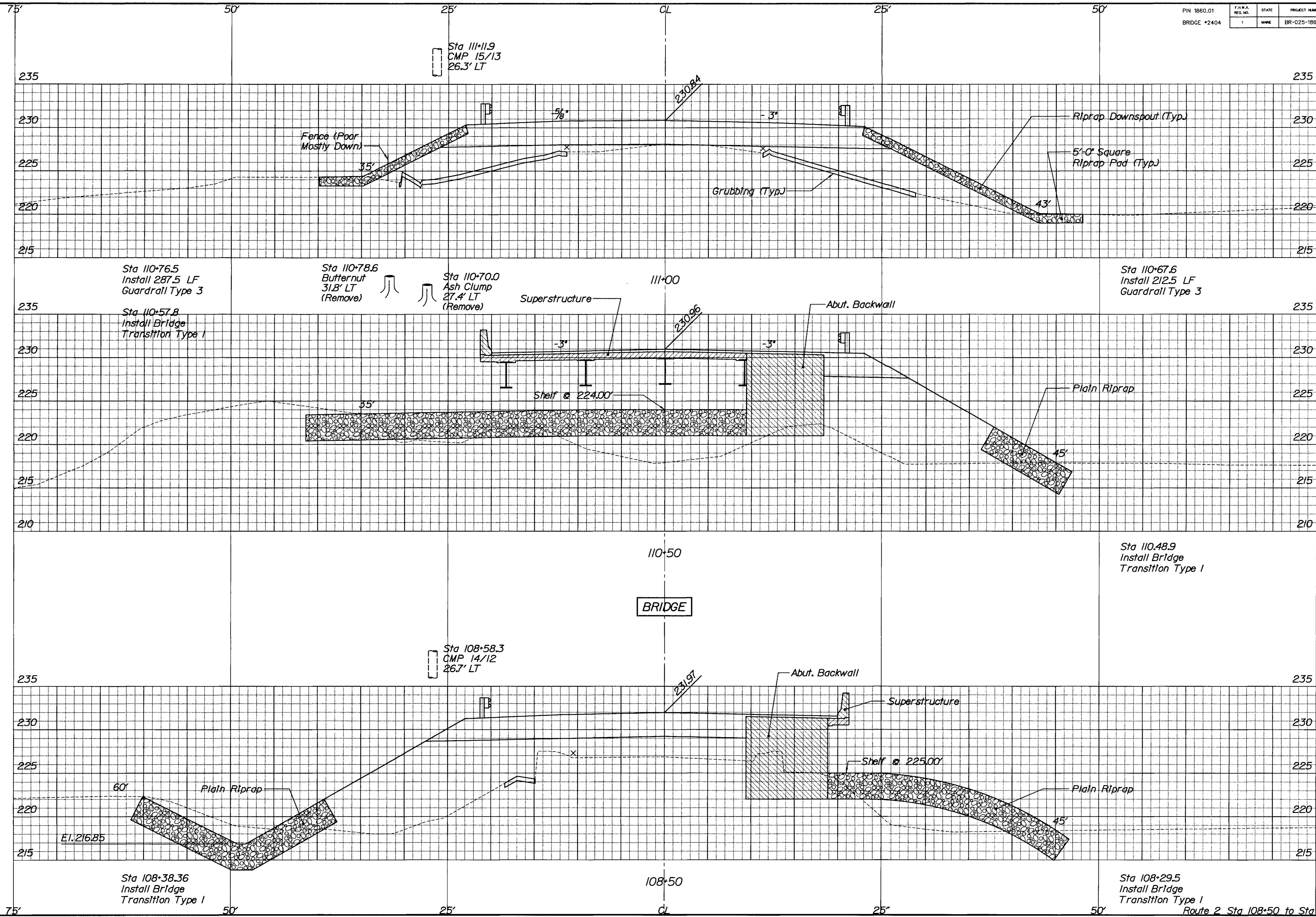
24" Dia. Culvert

Grubbing (Typ.)

Route 2 Sta 106+50 to Sta 108+00

PROJECT DESIGN ENGINEER	EBC	DATE	11-98
DESIGN DETAILED	JCC	BY	JCC
CHECKED	JMB	DATE	11-98
REVISIONS			
FIELD CHANGES			

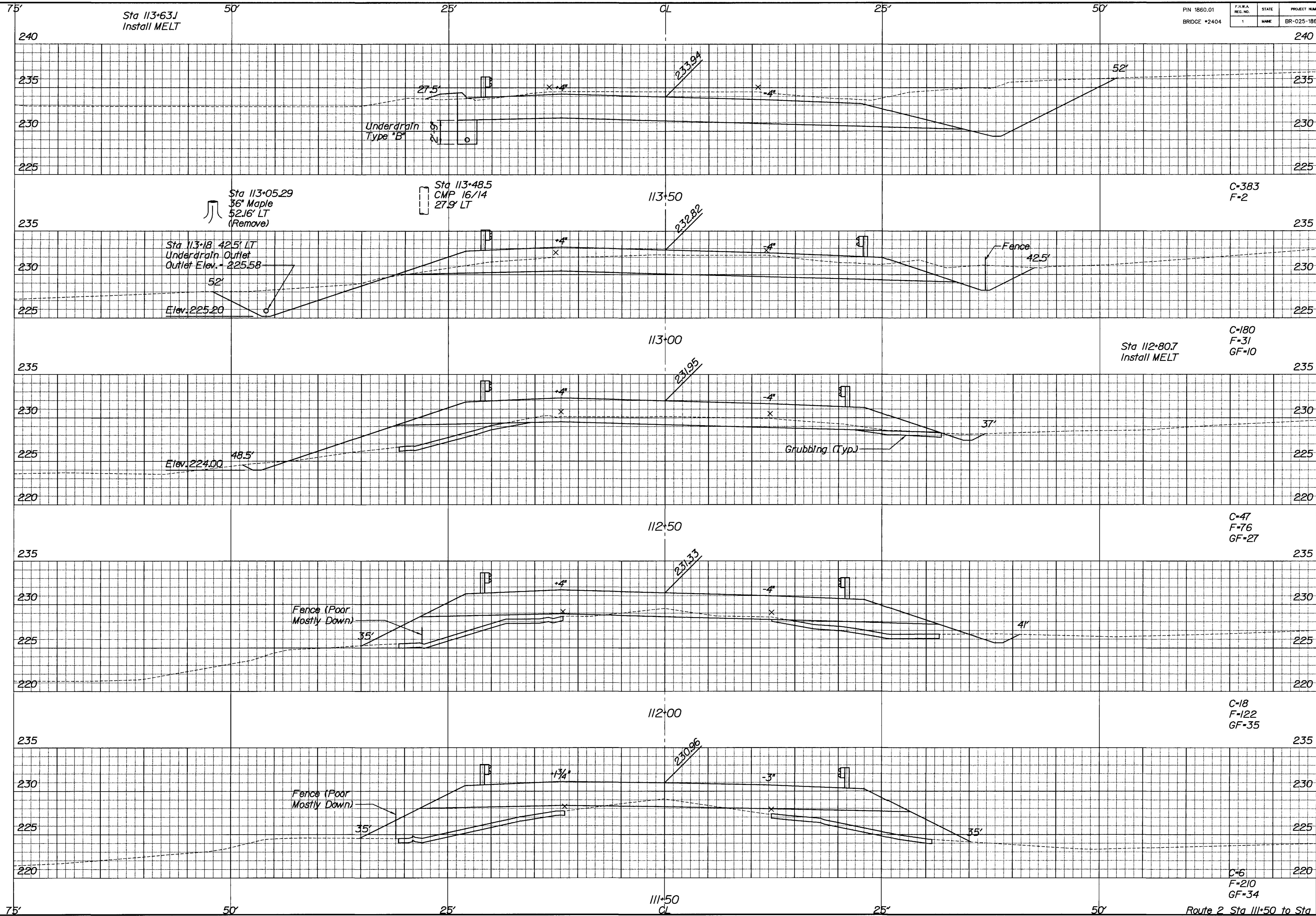
PLANS



PROJECT DESIGN ENGINEER	EBC	DATE	11-98
DESIGN-DETAILED	JCC	BY	JCC
CHECKED	JMB	DATE	11-98
REVISIONS			
FIELD CHANGES			

PLANS

Route 2 Sta 108+50 to Sta 111+00



PROJECT DESIGN ENGINEER	EBC	DATE	11-96
DESIGN-DETAILED	JCC	BY	JCC
CHECKED	JMB	ERC	JMB
REVISIONS			
FIELD CHANGES			

PLANS