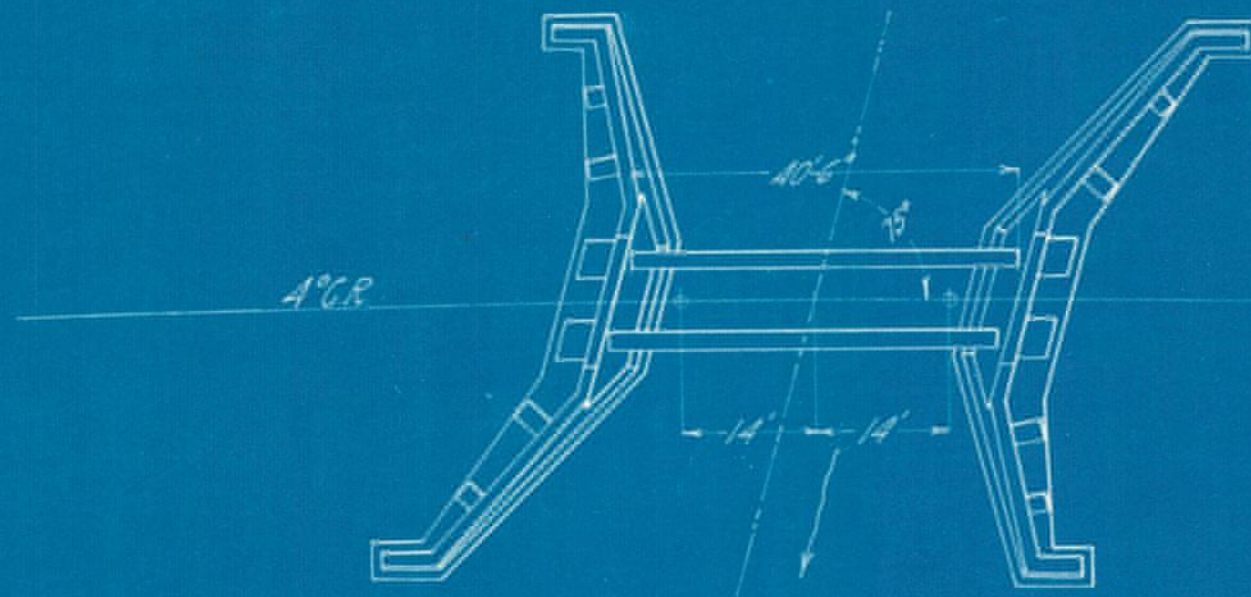


West Inlet Squa Fan Lake
Deck Plate Girder Skew 75°

Base of Rail --- Grade - 0.811%

Grade. - 0.811%
Alignment - 4°CR

#7800



Scale - 20"=1"

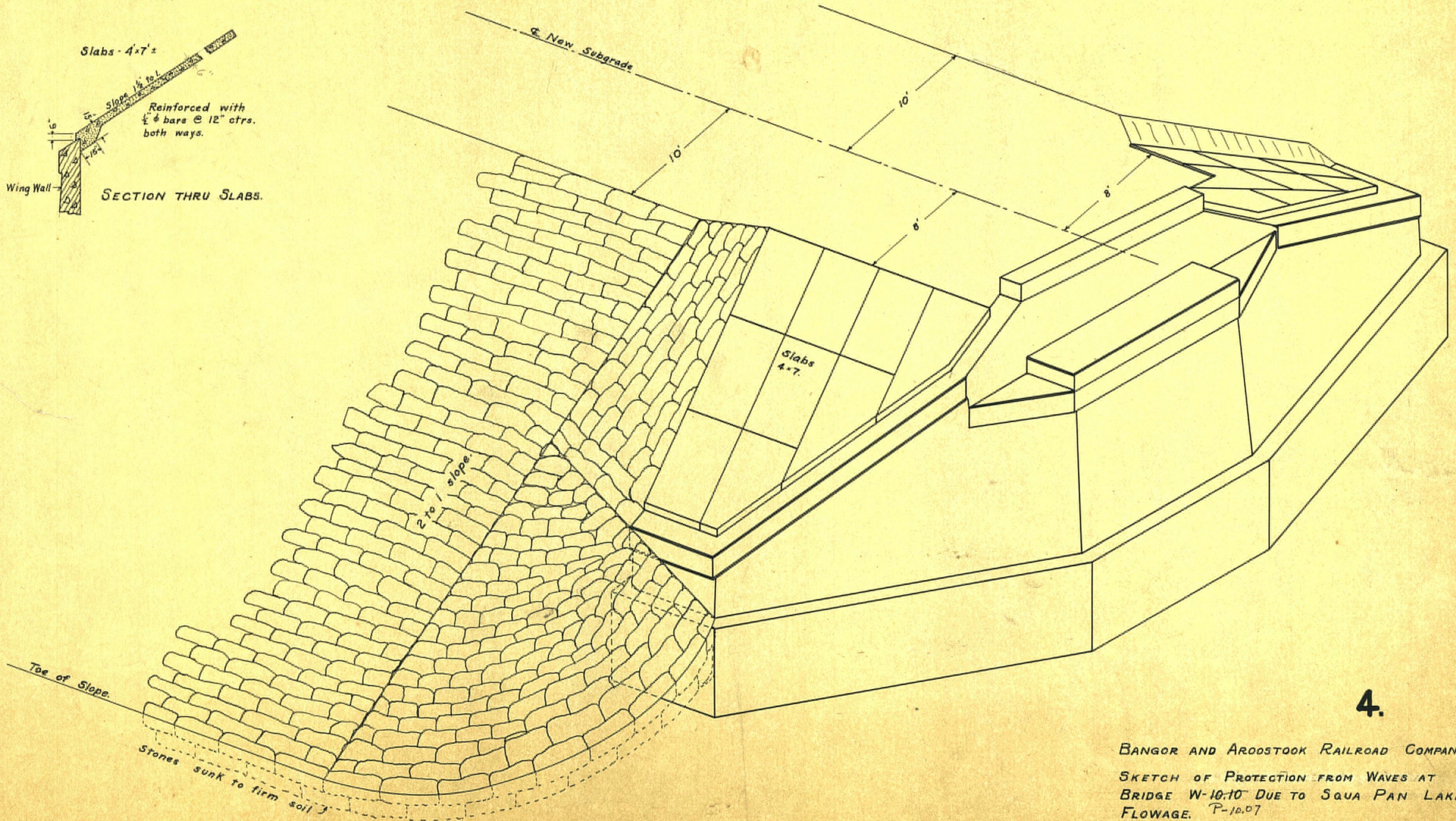
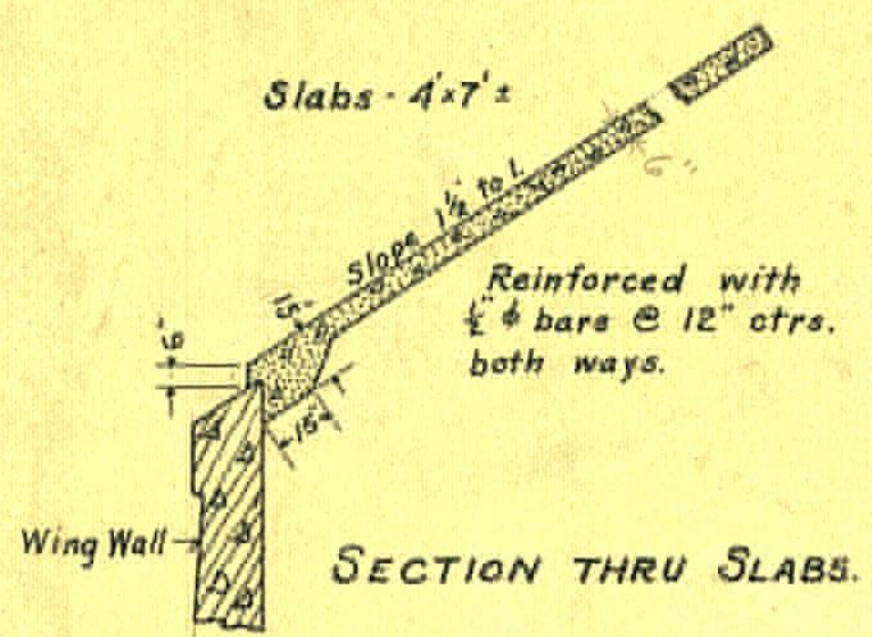
Built 1909	Built by Penna Steel Co	Ties - 8" x 12" x 13" -	Substr. - Gen Contractor. C.P. Trust
Loading - 2-142 tons Consolidation Locs followed by 4000# per ft	Erected by	General rails.	Sub-Contractor
Specifications N.M.S.R.R. 1905.	Weight 27,458*	Total Feet BM.	Total Cu. Yds.
	Cost	Cost.	Cost.

677.48* per lin. ft.

1976

112-200-10

V122-5



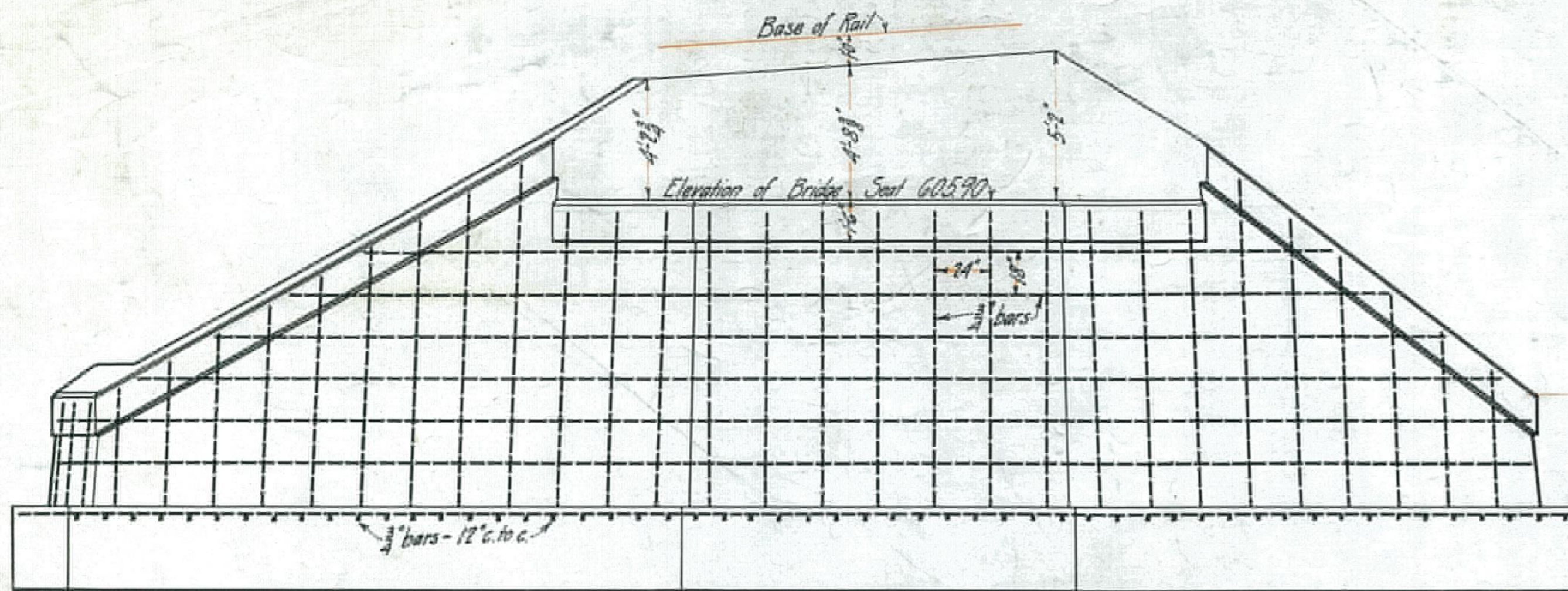
4.

BANGOR AND AROOSTOOK RAILROAD COMPANY.
 SKETCH OF PROTECTION FROM WAVES AT
 BRIDGE W-10.10 DUE TO SQUA PAN LAKE
 FLOWAGE. P-10.07

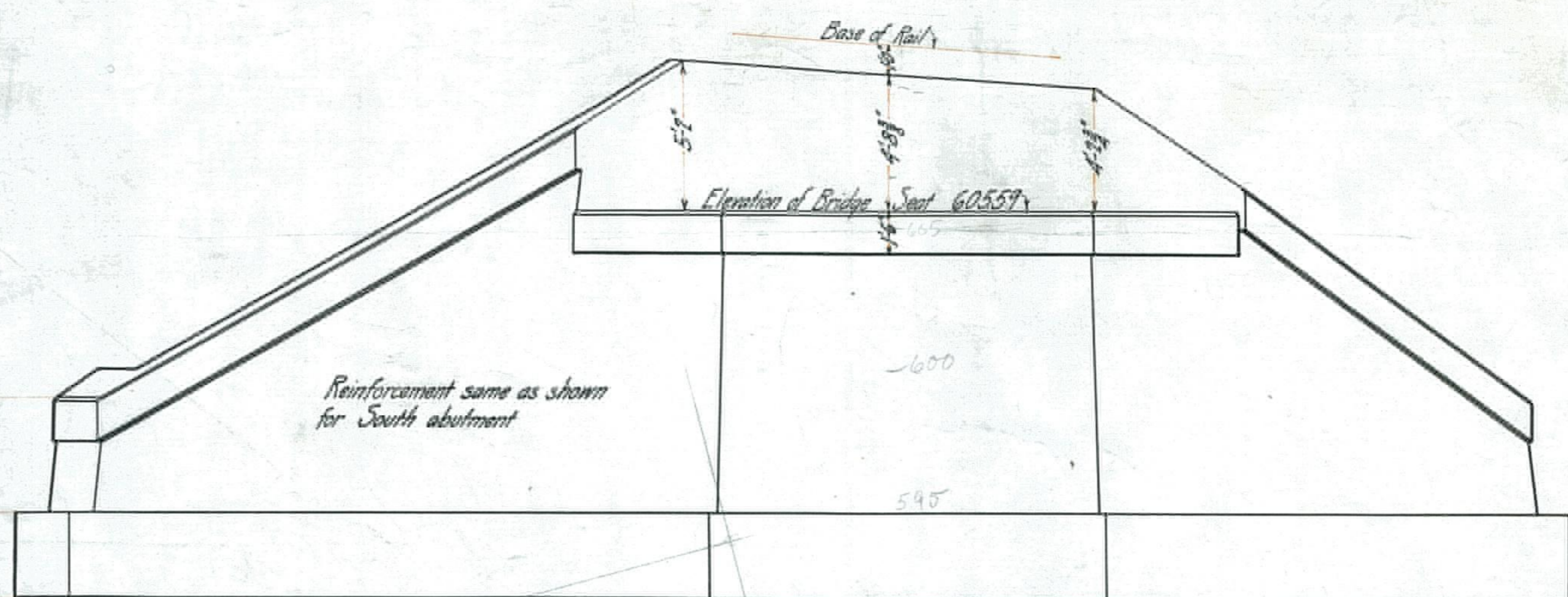
Houlton, Me.

April 18, 1927.

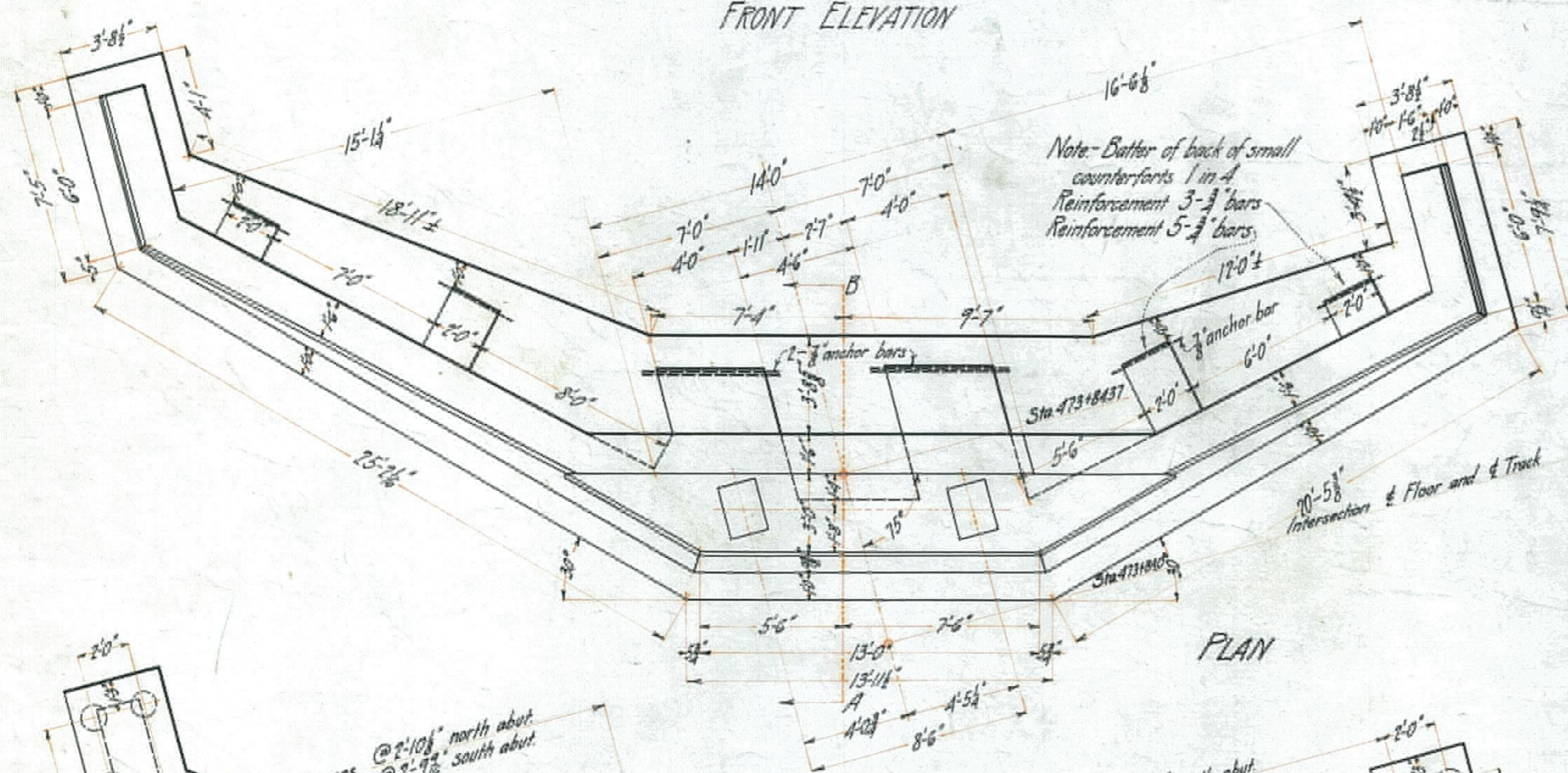
No Scale.



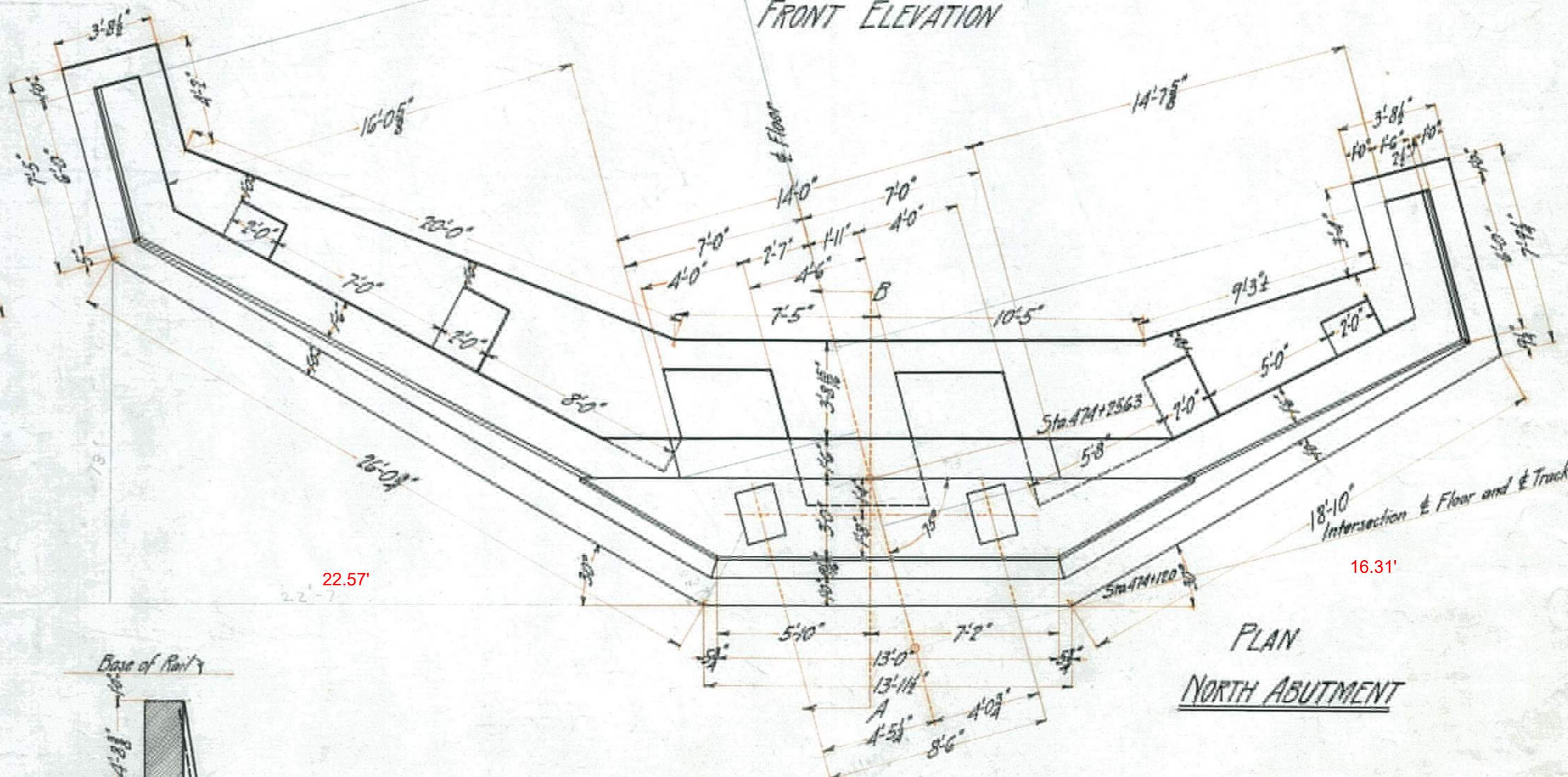
FRONT ELEVATION



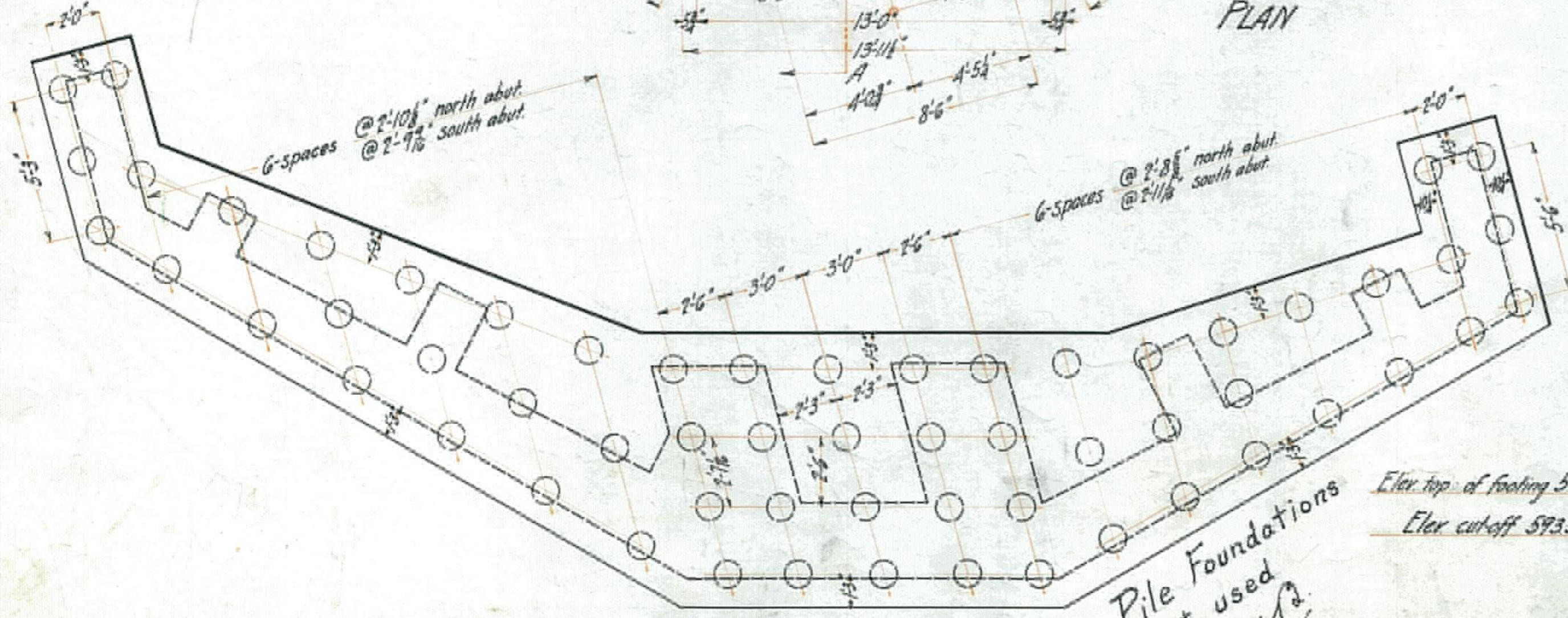
FRONT ELEVATION



PLAN

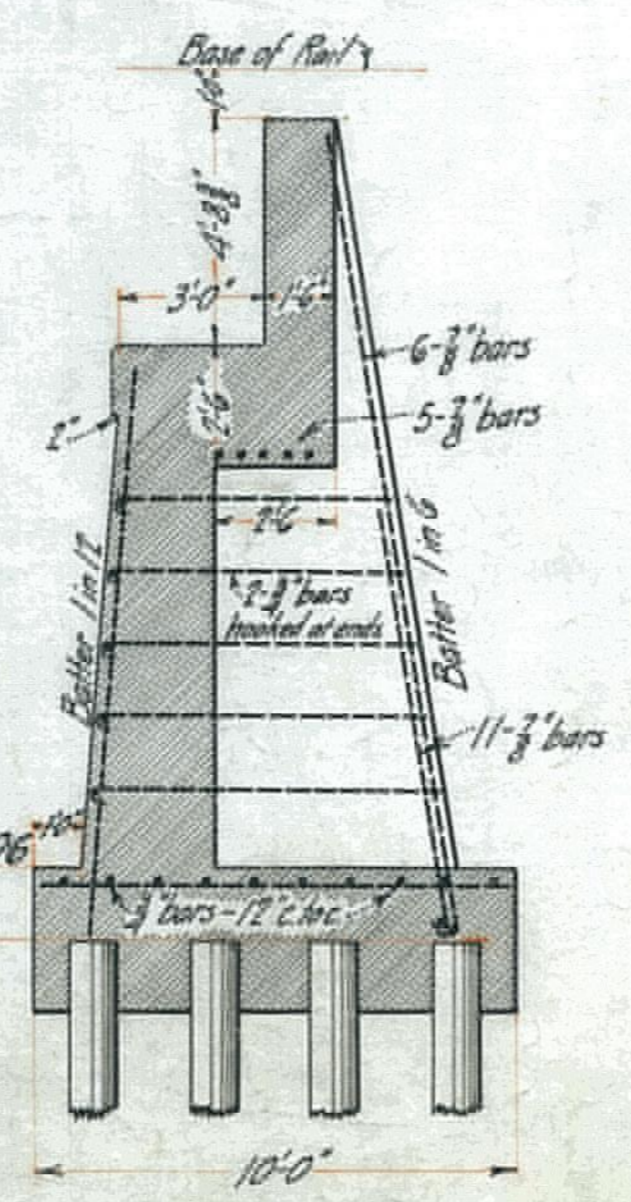


PLAN NORTH ABUTMENT

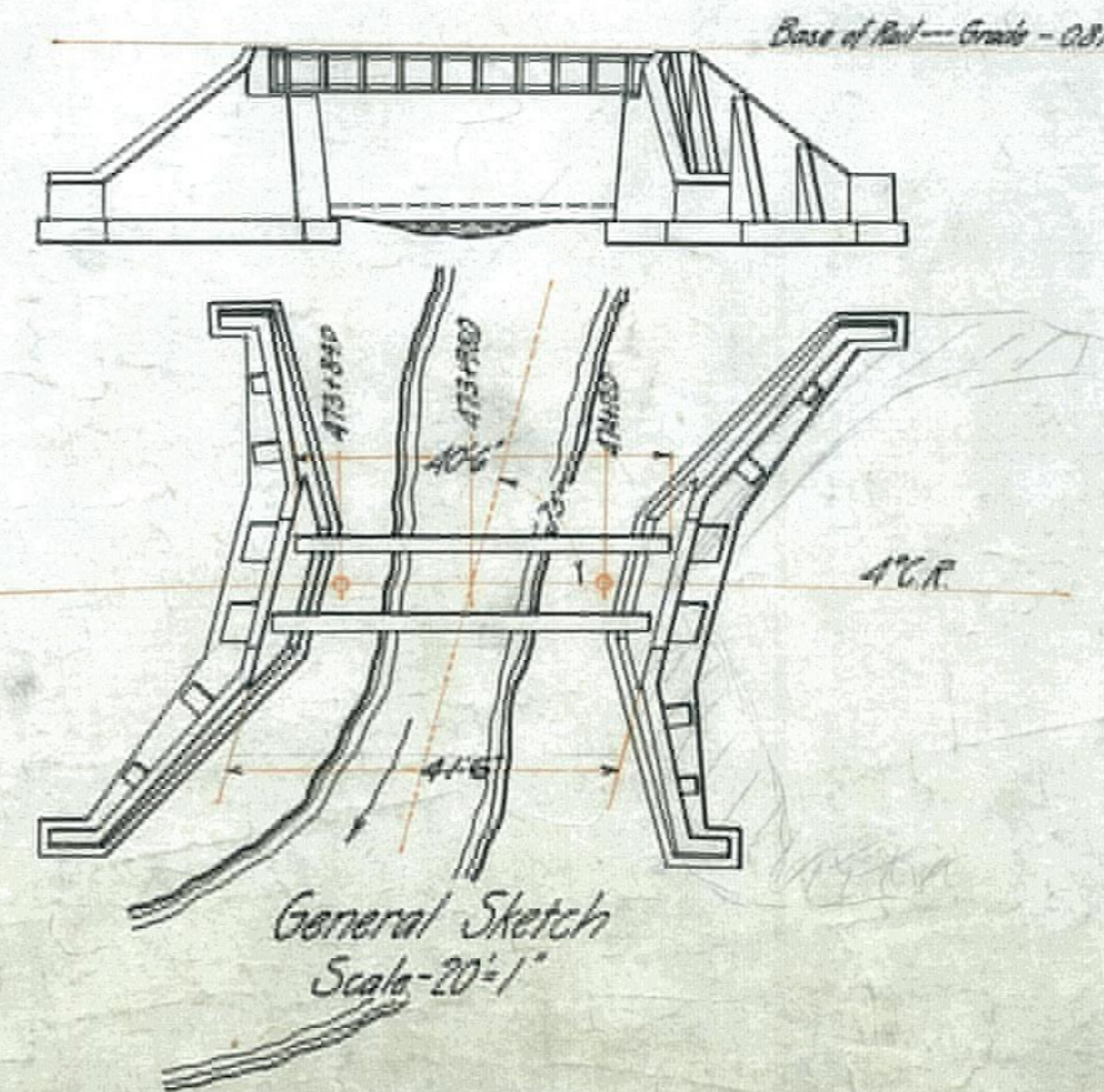


PLAN OF FOOTING
Showing Approximate Location of Piles
SOUTH ABUTMENT

Pile Foundations
not used
M.L.



SECTION ON AB

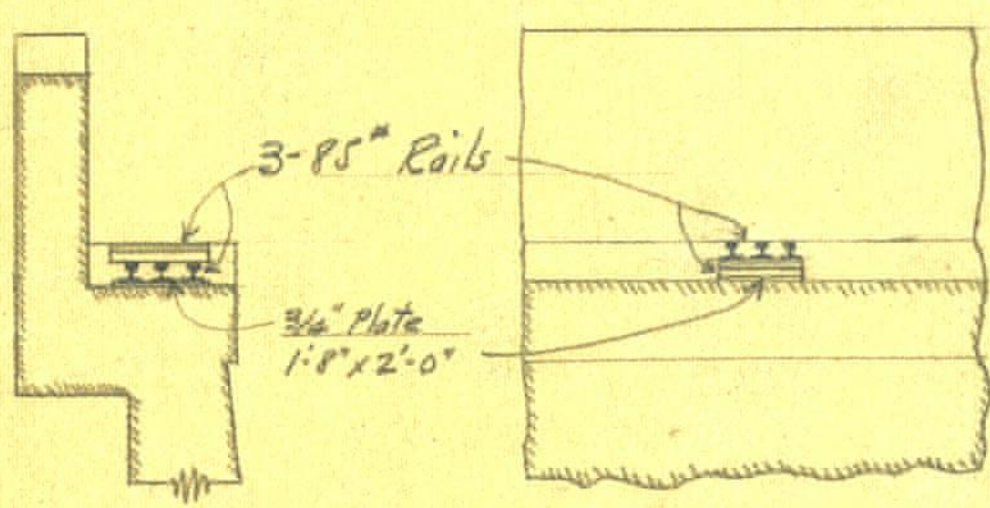


General Sketch
Scale - 20'-1"

BANGOR AND ARDOSTOCK R.R.
PLAN OF MASONRY
FOR WEST INLET TO SQUA PAN LAKE.

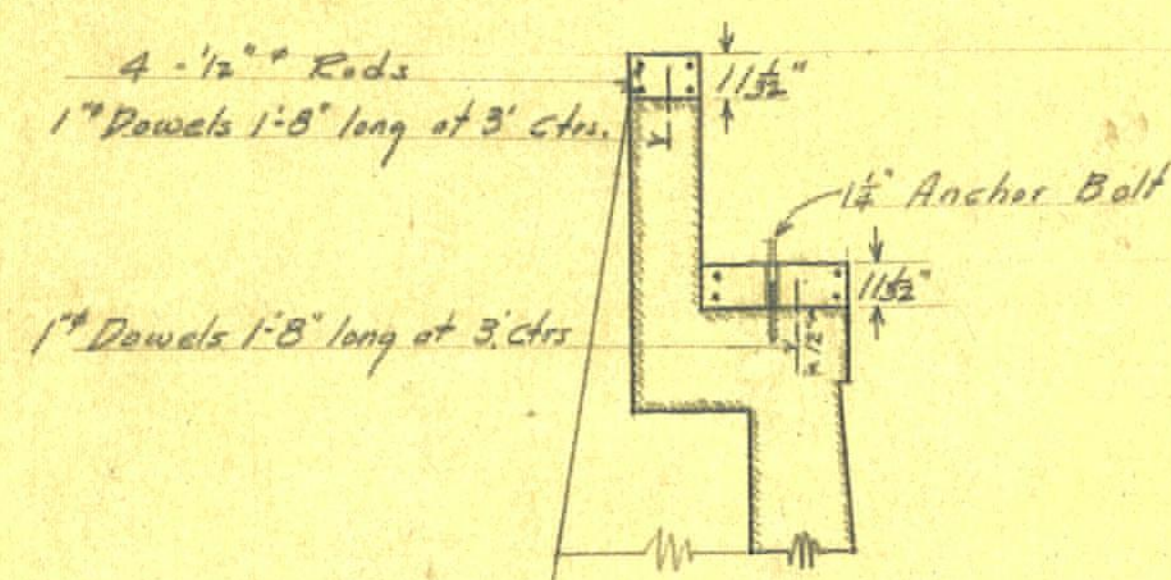
Scale - 1/4" = 1'
Houlton Me. Dec. 16, 1909.
Revised Feb. 18, 1910.

P-10.07

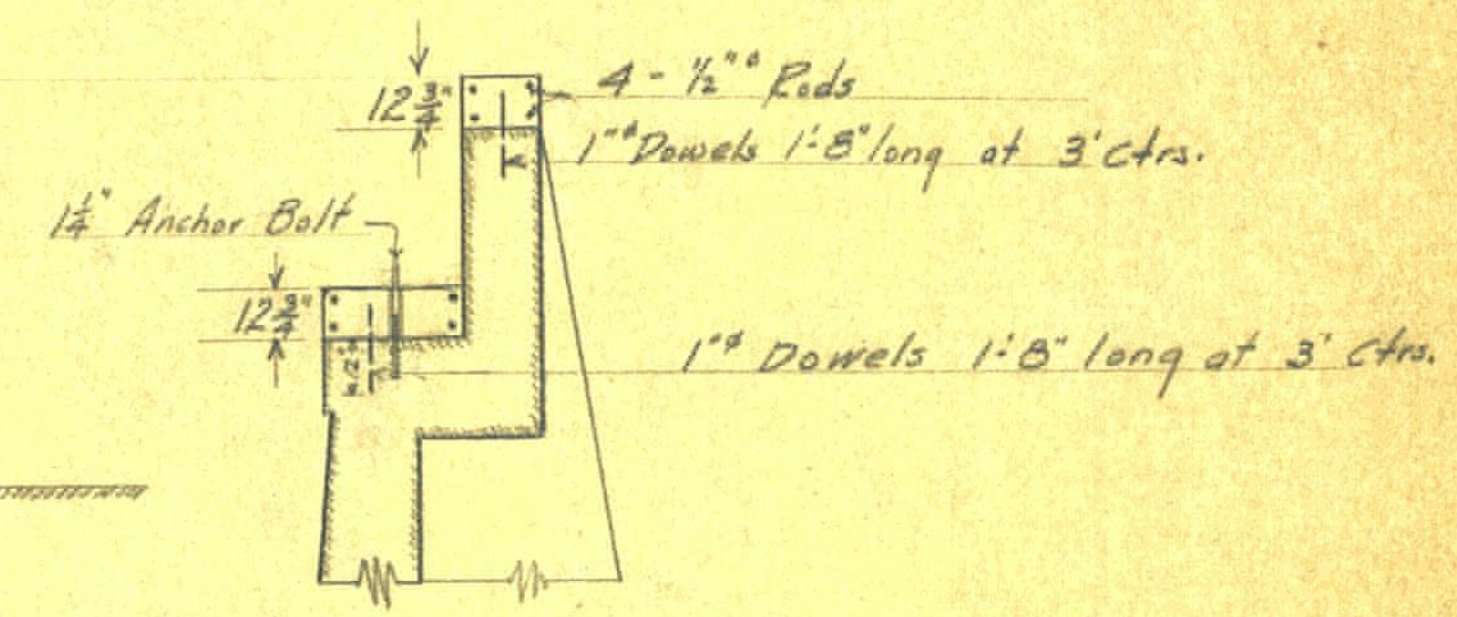


END ELEVATION. FRONT ELEVATION.

SOUTH ABUTMENT.



SOUTH ABUTMENT.



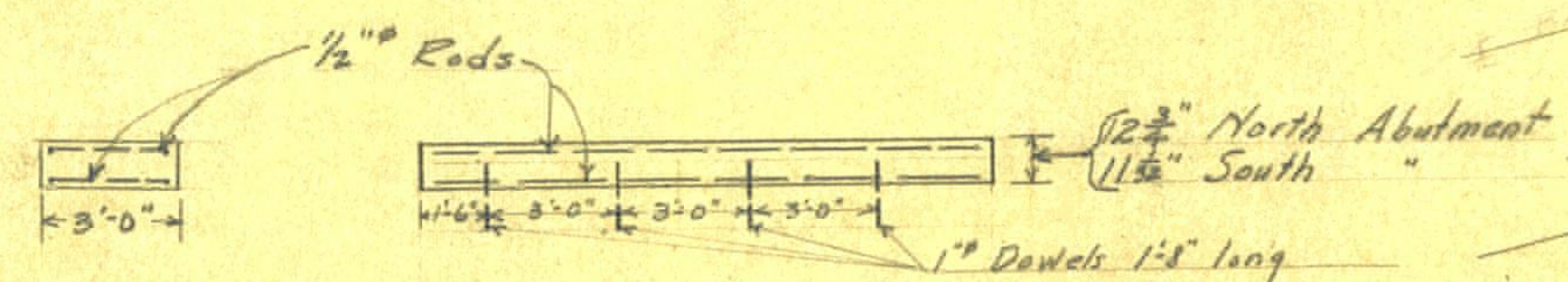
NORTH ABUTMENT.

NOTE: PRESENT MASONRY SHOWN

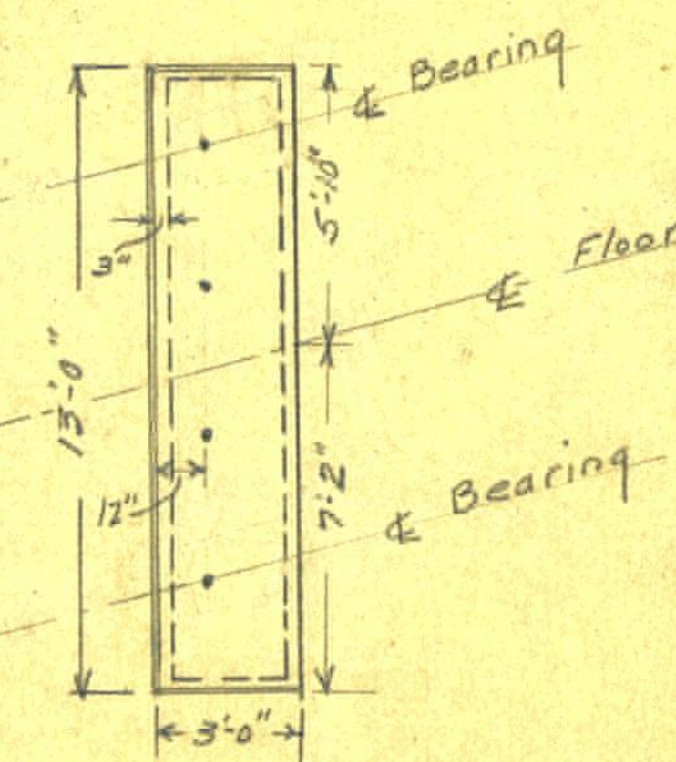
SECTIONAL ELEVATION OF ABUTMENTS SHOWING NEW MASONRY REQUIRED ON PRESENT ABUTMENTS.

DETAILS SHOWING METHOD OF RAISING BRIDGE.

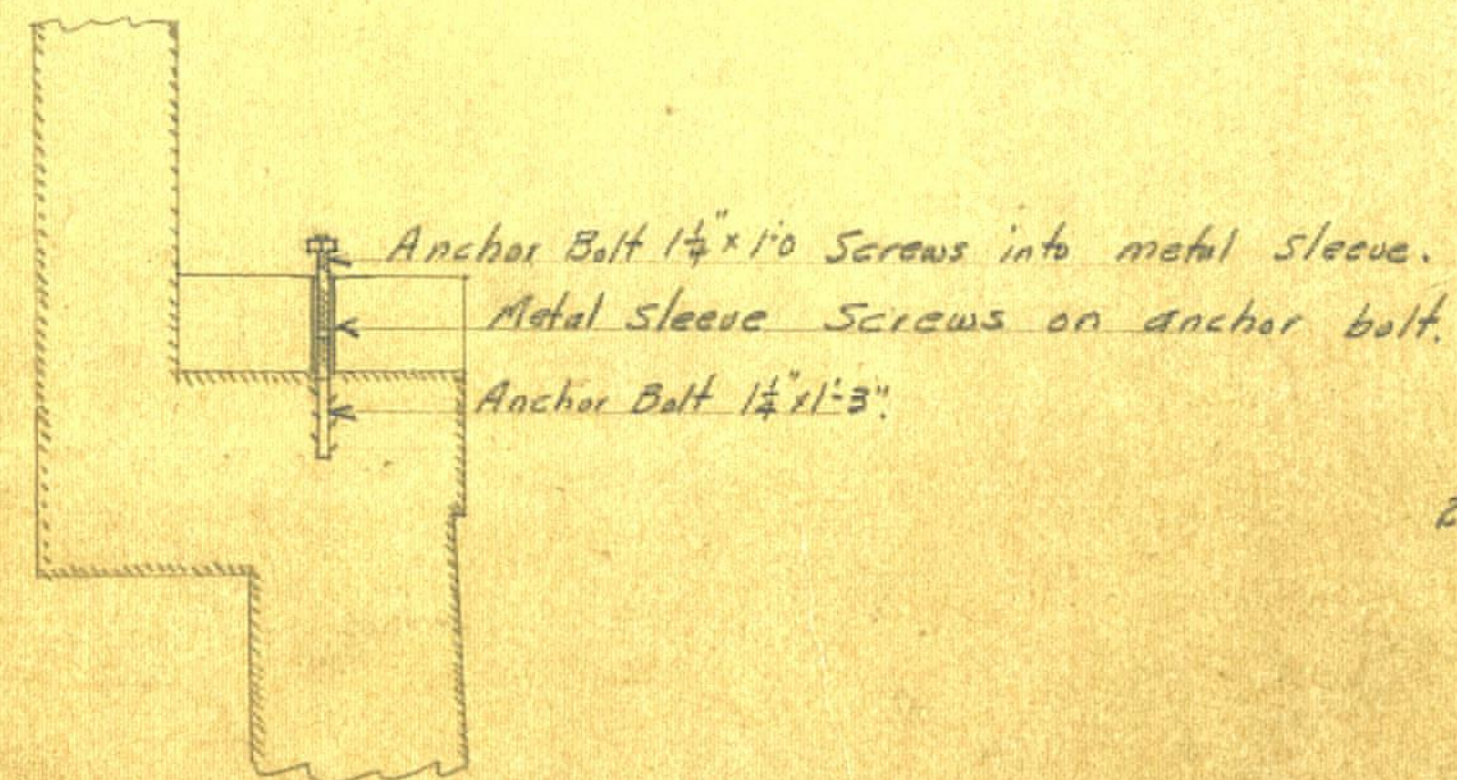
NOTE:
AT NORTH ABUTMENT FIVE (5) 1/2" PLATES 1'-8" x 2'-0" WILL BE USED UNDER RAILS.
PLATES UNDER RAILS AT BOTH ABUTMENTS SHOULD BE SET IN A BED OF CEMENT MORTAR IN ORDER THAT AN EVEN BEARING MAY BE OBTAINED OVER THE ENTIRE SURFACE OF PLATES.



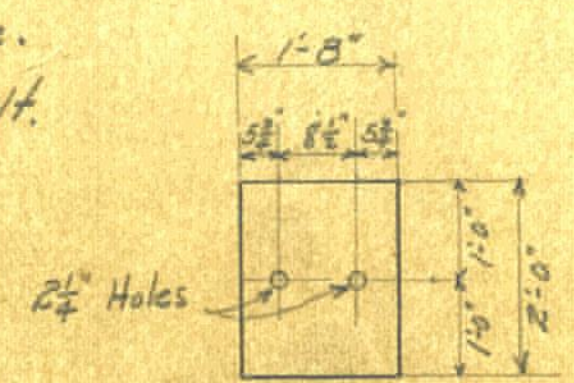
END ELEVATION. SIDE ELEVATION.



PLAN.



DETAILS SHOWING METHOD OF ANCHOR BOLT EXTENSION.



DETAIL OF PLATES USED UNDER RAILS.

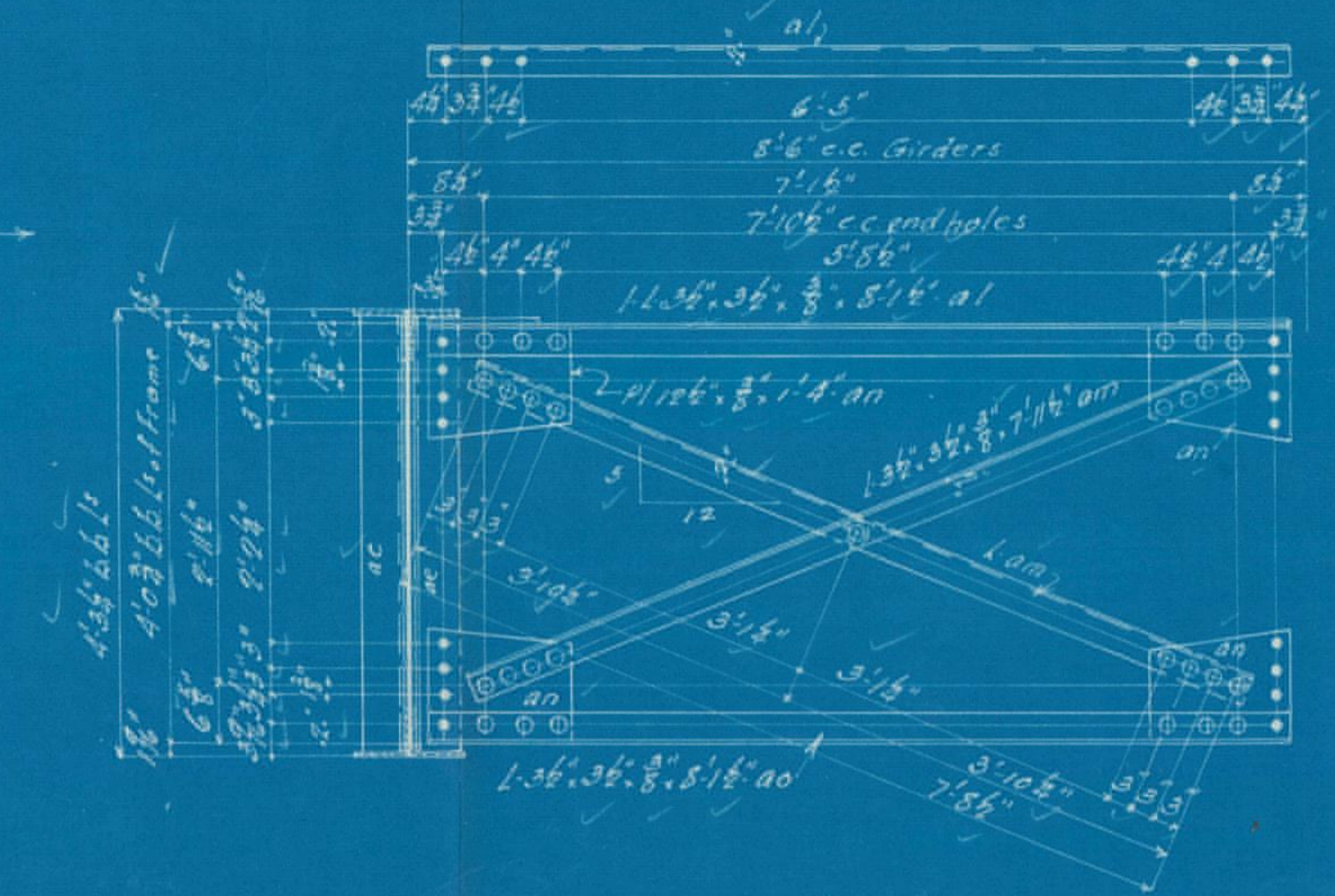
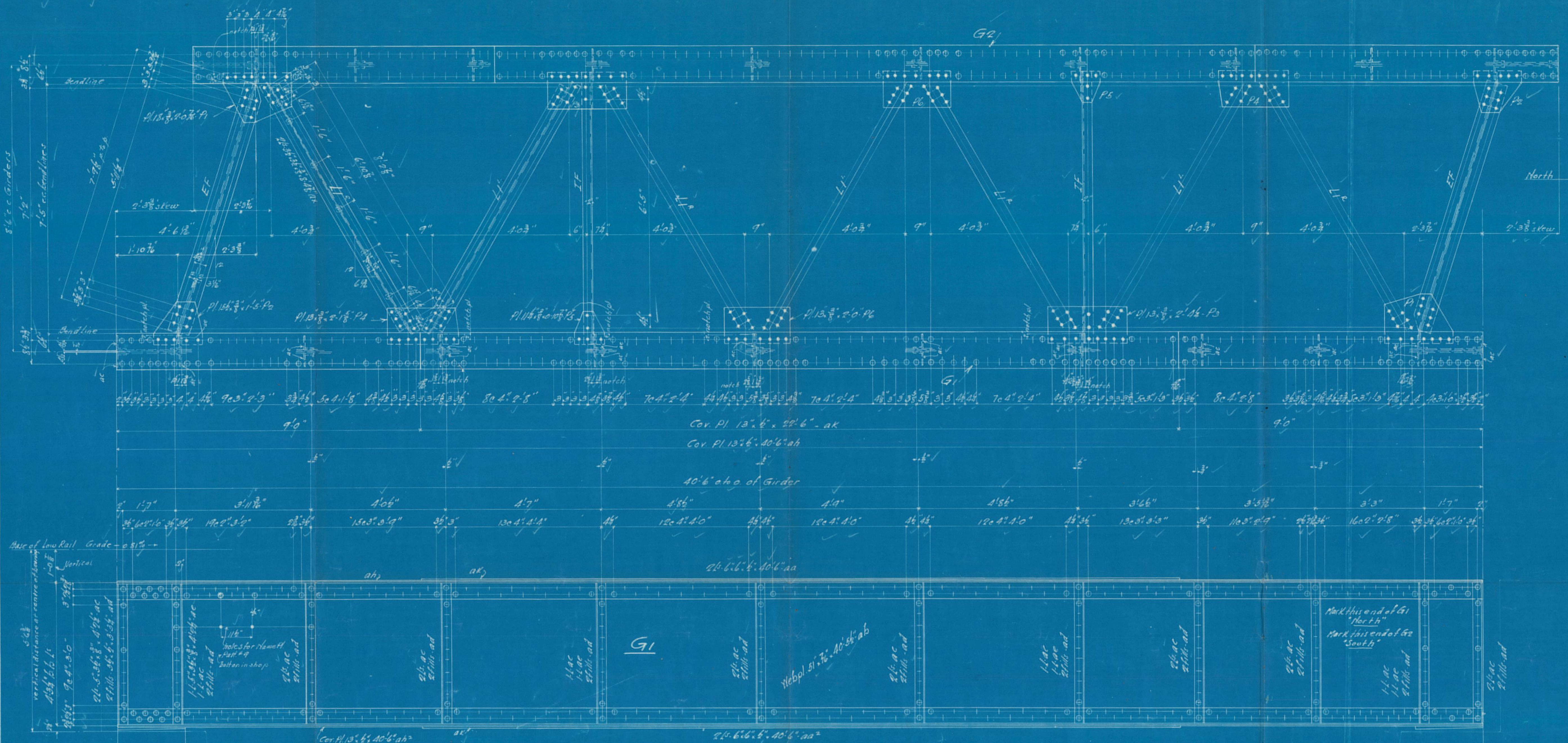
DETAILS OF MASONRY IN NEW BRIDGE SEATS.

NOTE:
ALL PLATES ARE SIMILAR.
NO PLATES REQUIRED.
2 PLATES 3/4" THICK.
10 PLATES 1/2" THICK.

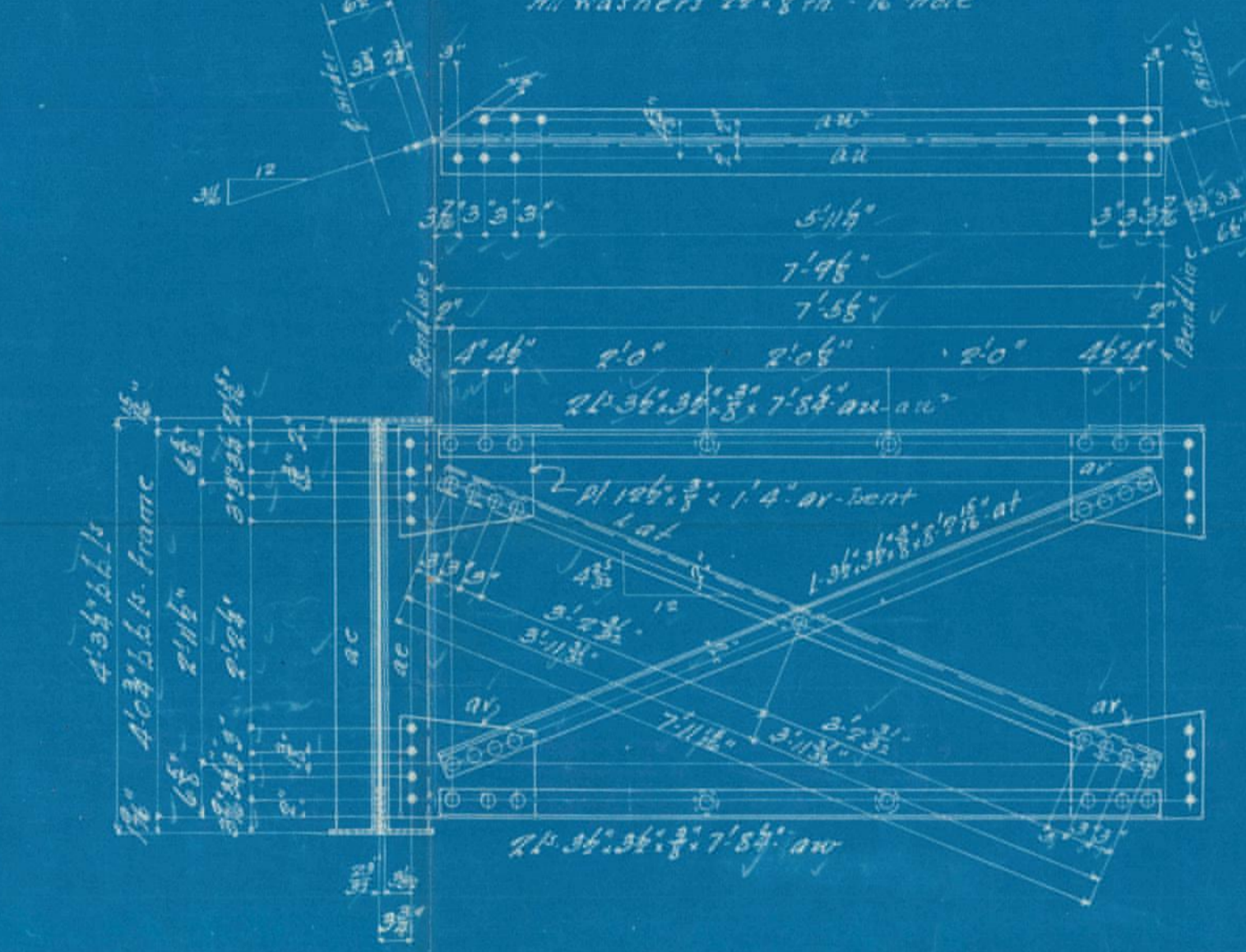
3.

BANGOR & AROOSTOOK RAILROAD CO.
PLAN OF NEW MASONRY REQUIRED
P-10.07 AT
BRIDGE No. 11410 WEST INLET SQUA PAN LAKE,
SQUA PAN LAKE FLOWAGE.
Scales
1/2" = 1'
HOULTON, ME. APRIL 22 1927

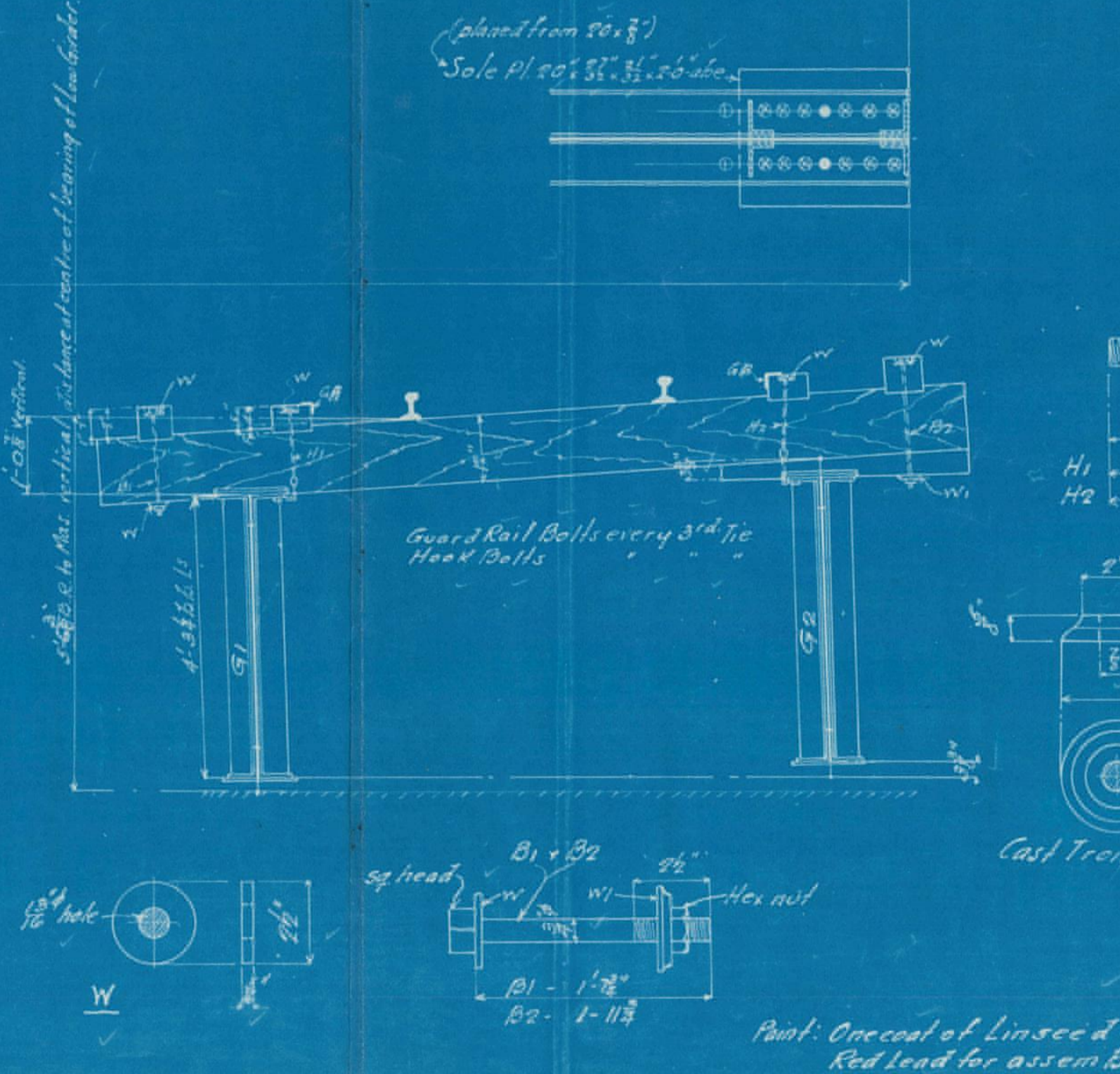
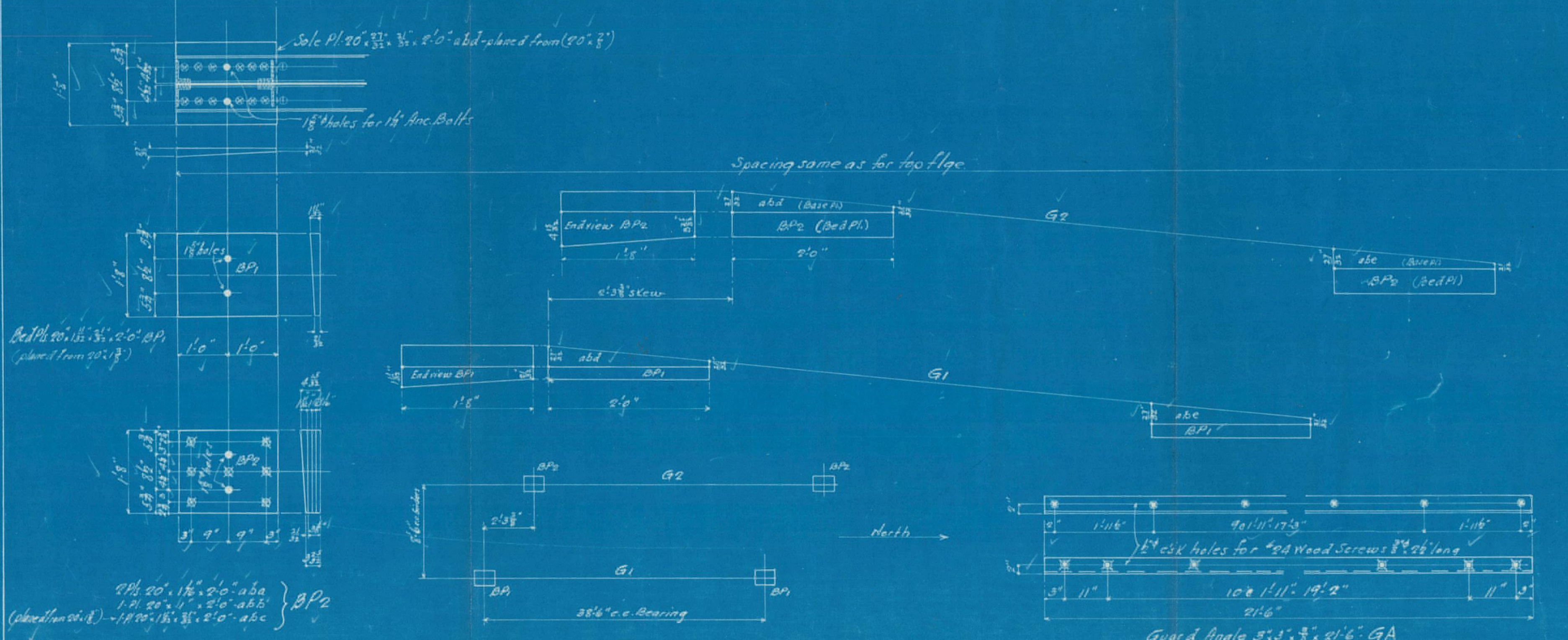
Rivets 8 diam.
Open holes 1/8" except where noted



Int Frame IF



End Frame EF



Note: This drawing to be used as an erection diagram.

- Required List**
- 2 Girders - G1, G2
 - 2 Int Frames - IF
 - 2 End Frames - EF
 - 7 Laterals - 4L1, 3L1
 - 2 Lat. Pls. - P1
 - 2 " " - P2
 - 2 " " - P3
 - 2 " " - P4
 - 2 " " - P5
 - 2 " " - P6
 - 2 Bed Pls. - BP1
 - 2 " " - BP2
 - 12 Hook Bolts - H1
 - 12 " " - H2
 - 24 Washers - W1
 - 12 Guard Bolts - GB
 - 12 " " - GB
 - 48 Washers - W
 - 4 Guard L. GA
 - 120 Wood Screws
- List of Drawings**
- 3 Girders Bracing etc
 - SR1 - Field Rivets & Anc Bolts

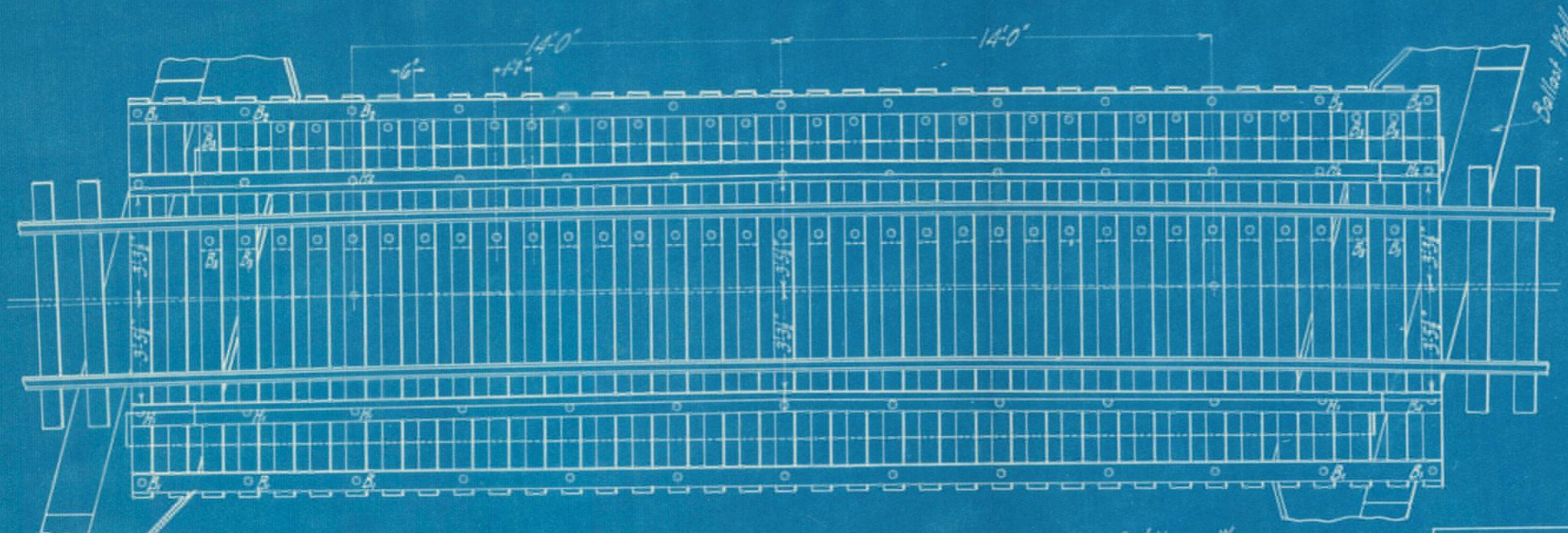
APPROVED
[Signature]
 NOV 24 1908

NOV 13 1908

Bridge at Sta 474
 Between
 Squapan & Mapleton
 Proostock Construction Co
 for
 BANGOR & PROOSTOCK R.R.
 Built By
 The PENNSYLVANIA STEEL CO
 Bridge & Construction Dept.
 Steelton, Pa.

3655
 Scale 1/4" = 1'-0"
 Date by P. H. W.
 Checked by J. H. W.
 In Charge: P. H. W.
 Bill Sheets: 10-31
 Revised 11/8-08

Paint One coat of Linseed Oil
 Red lead for assembling.
 Parts inaccessible after erection two coats of Approved Graphite Paint.

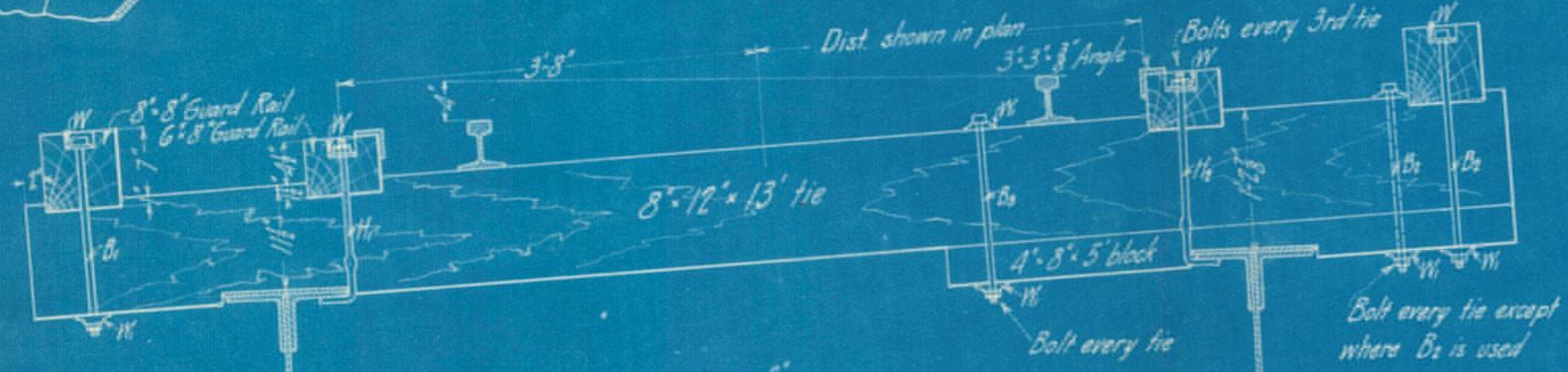


BILL OF BOLTS AND WASHERS
to be furnished by P.S.Co

12 Guard bolts	B ₁
12 Guard bolts	B ₂
12 Hook bolts	H ₁
12 Hook bolts	H ₂
48 Washers	W
24 Washers	W ₁

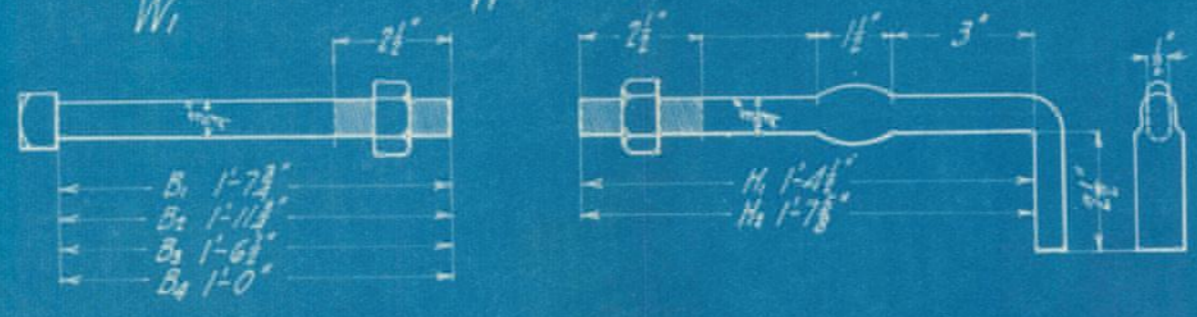
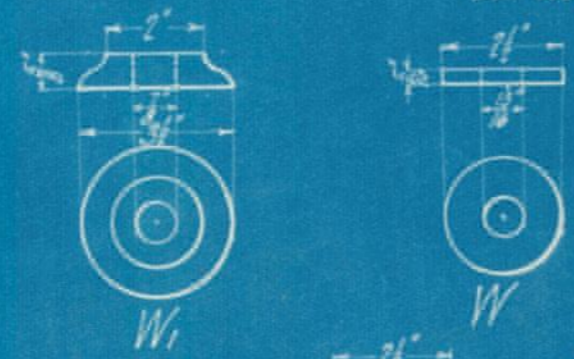
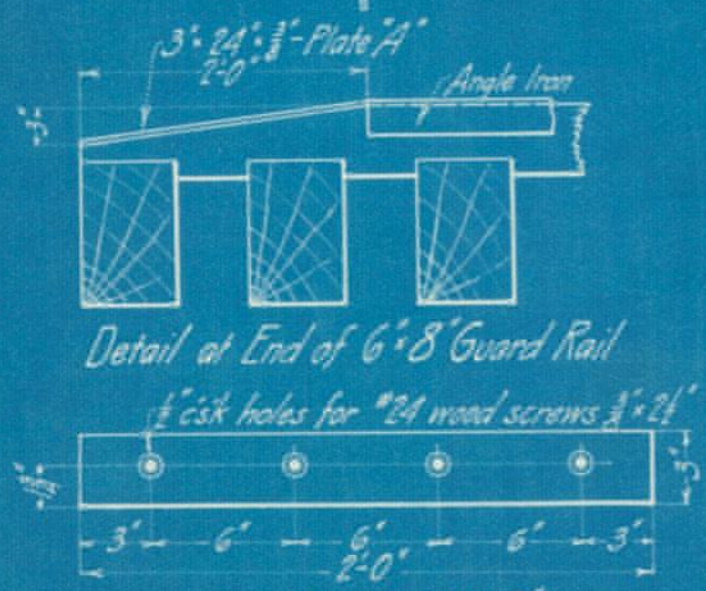
to be furnished by R.R.Co

2 Guard bolts	B ₁
2 Guard bolts	B ₂
57 Bolts	B ₃
6 Washers	W
116 Washers	W
4 Plates	A
16 Screws. #24 - 3/8" x 2 1/2"	



BILL OF TIMBER

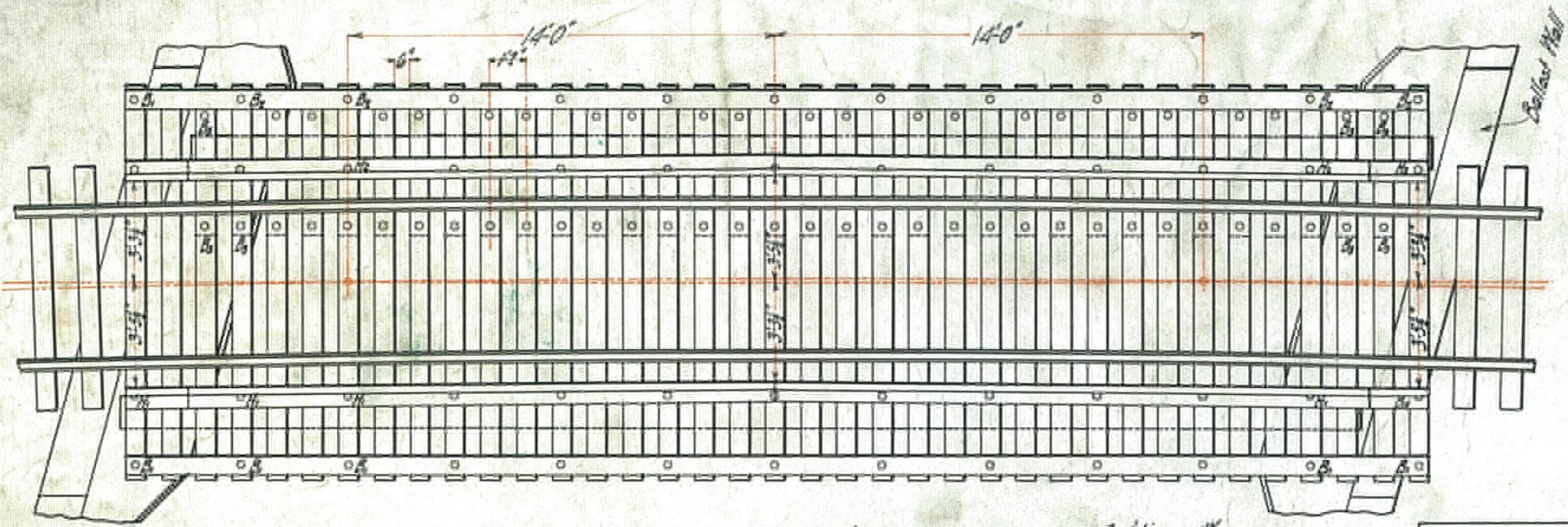
		F.B.M.
37 Ties	8'-12" x 13'	3848
35 Blocks	4'-8" x 5'	467
Guard rails	8'-8" 100 lin. ft.	533
Guard rails	6'-8" 100 lin. ft.	400
		<u>5248</u>



BANGOR AND AROOSTOOK R.R.
BRIDGE FLOOR DETAILS
FOR WEST INLET TO SQUA PAN LAKE.

Scale - 1/4" = 1'

Houlton Me. Jan. 3, 1910.

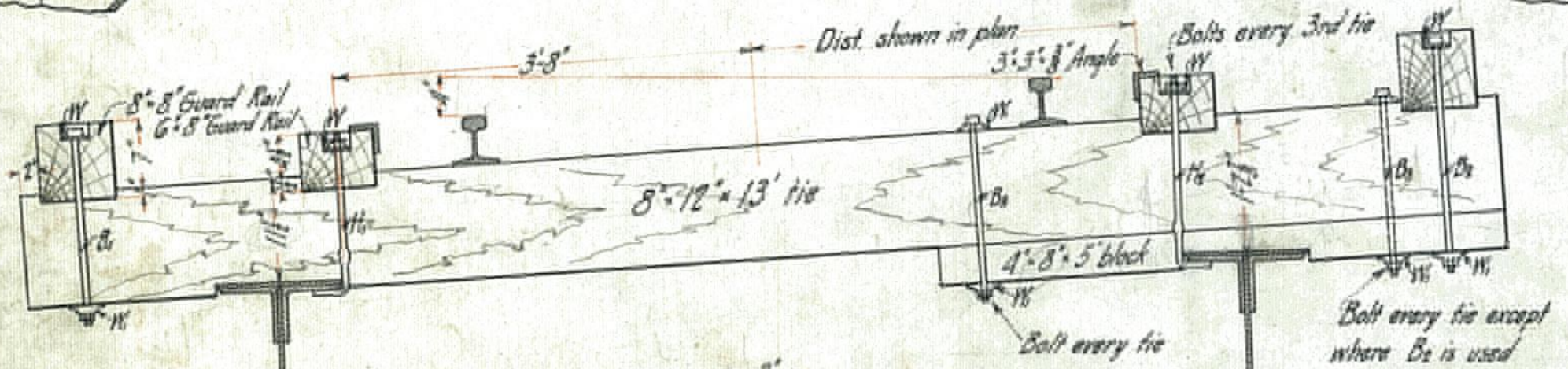


BILL OF BOLTS AND WASHERS
to be furnished by P.S.Co

12 Guard bolts	B ₁
12 Guard bolts	B ₂
12 Hook bolts	H ₁
12 Hook bolts	H ₂
48 Washers	W
24 Washers	W ₁

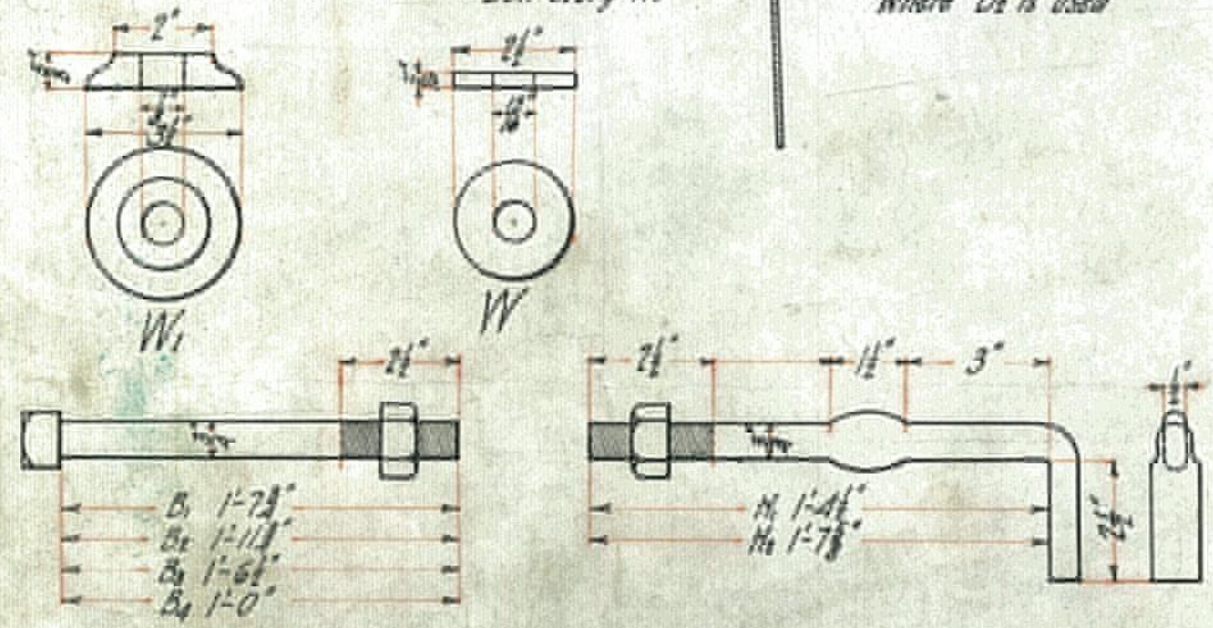
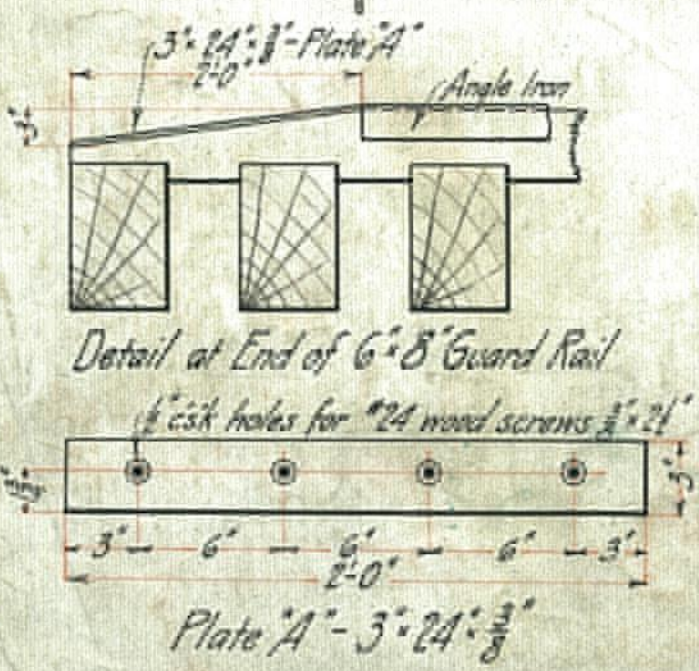
to be furnished by R.R.Co

2 Guard bolts	B ₁
2 Guard bolts	B ₂
57 Bolts	B ₃
6 Washers	W
116 Washers	W ₁
4 Plates	A
16 Screws. #24 - 3/8" x 2 1/2"	



BILL OF TIMBER

		FBM
37 Ties	8'-12'-13'	3848
35 Blocks	4'-8'-5'	467
Guard rails	8'-8" 100 lin. ft.	533
Guard rails	6'-8" 100 lin. ft.	400
		<u>5248</u>



BANGOR AND ARDOSTOOK R.R.
BRIDGE FLOOR DETAILS
FOR WEST INLET TO SQUA PAN LAKE.

Scale - 1/4" = 1'

Houlton Me. Jan 3, 1910.

BILL OF BOLTS AND FIELD RIVETS.

For Bratsto. 474-bet. Squapan + Mapleton - Arcostook Con. Co. Ranger + Arcostook R. R.

Contract No. 3655 Material _____

Bill made by G.H. 11-9 1909

Sheet No. SR1 of 1 Inspection _____

Material Checked by _____ 190

Finished bill checked by G.H. 11/10 1909

Form 1317 6-25-09 4000

NOV 10 1909

Ship- ping Mark	Number Required	DESCRIPTION	Diam.	Grip	Length under head	Length threaded at end	Shape of head	Requisition	NUTS			Requisition	Total Weight	PIECES CONNECTED OR REMARKS	
									Number Pieces	Kind	Tapped				
1	<i>Summary of Rivets + 15% (abt)</i>														
2	360	Rivets	$\frac{7}{8}$		$2\frac{3}{8}$		B.H.	✓							
3	20	"	"		$2\frac{3}{4}$		"	✓							
4	40	"	"		3		"	✓							
5	50	"	"		$3\frac{5}{8}$		"	✓							
6	10	"	"		4		"	✓							
7															
8															
9															
10															
11	8	Anchor Bolts	$1\frac{1}{4}$		1-3		AB								
12															
13															
14															
15															
16															
17															
18															
19															
20															
21															
22															
23															
24															
25															
26															
27															
28															
29															
30															
31															
32															
33															
34															
35															
36															
37															
38															
39															
40															
41															
42															
43															
44															
45															
46															
47															
48															
49															
50															
51															
52															



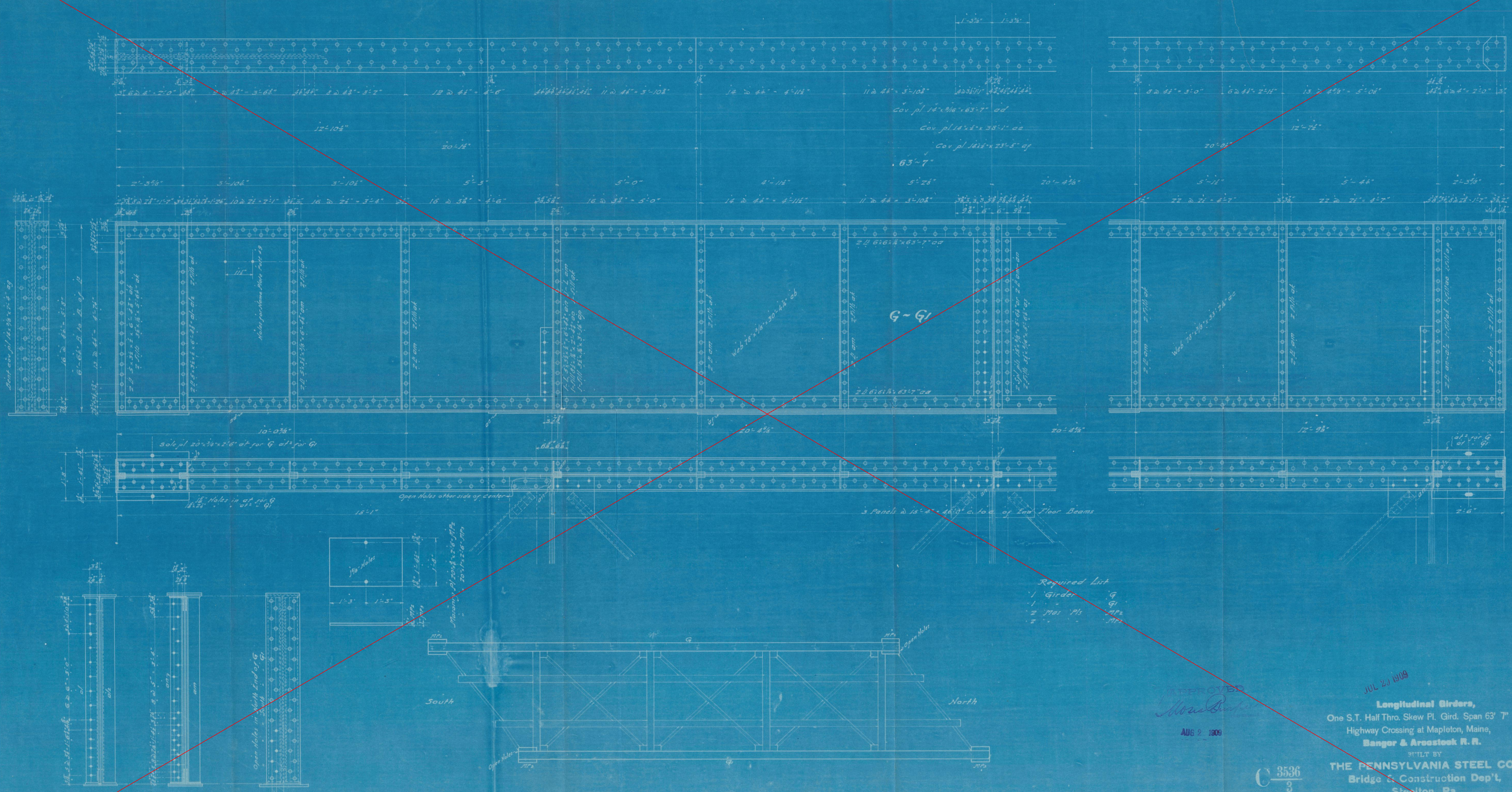
NOV 15 1909

APPROVED
Max B...
 CHIEF ENGINEER

APPROVED
Max B...
 CHIEF ENGINEER

1994

Rivets 7/8 in diam.
 Open Holes 15/16 in diam.
 Holes for Floor Beam Connections to be reamed to 1" or 1 1/8" Temp't.



Required List
 1 Girder G
 1 G G
 2 Max. Hs MP
 2 MP MP

APPROVED
W. B. Baker
 AUG 2 1909

JUL 23 1909
Longitudinal Girders,
 One S.T. Half Thro. Skew Pl. Gird. Span 63' 7"
 Highway Crossing at Mapleton, Maine,
Bangor & Aracostock R. R.
 BUILT BY
THE PENNSYLVANIA STEEL CO.,
 Bridge & Construction Dep't,
 Steelton, Pa.

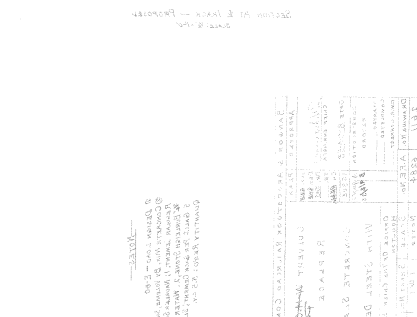
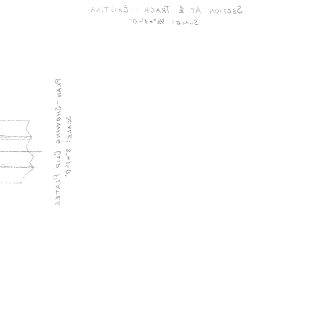
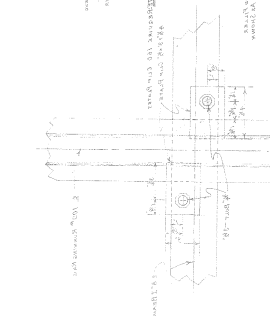
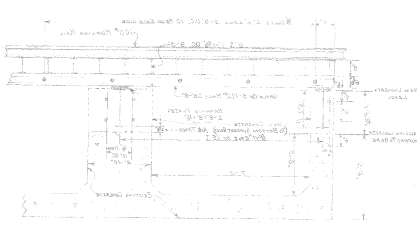
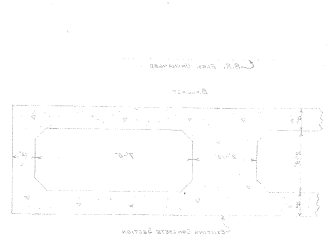
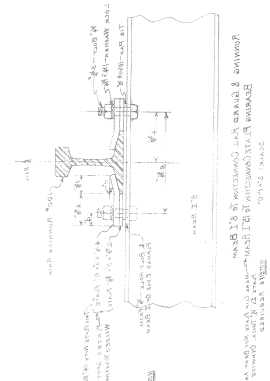
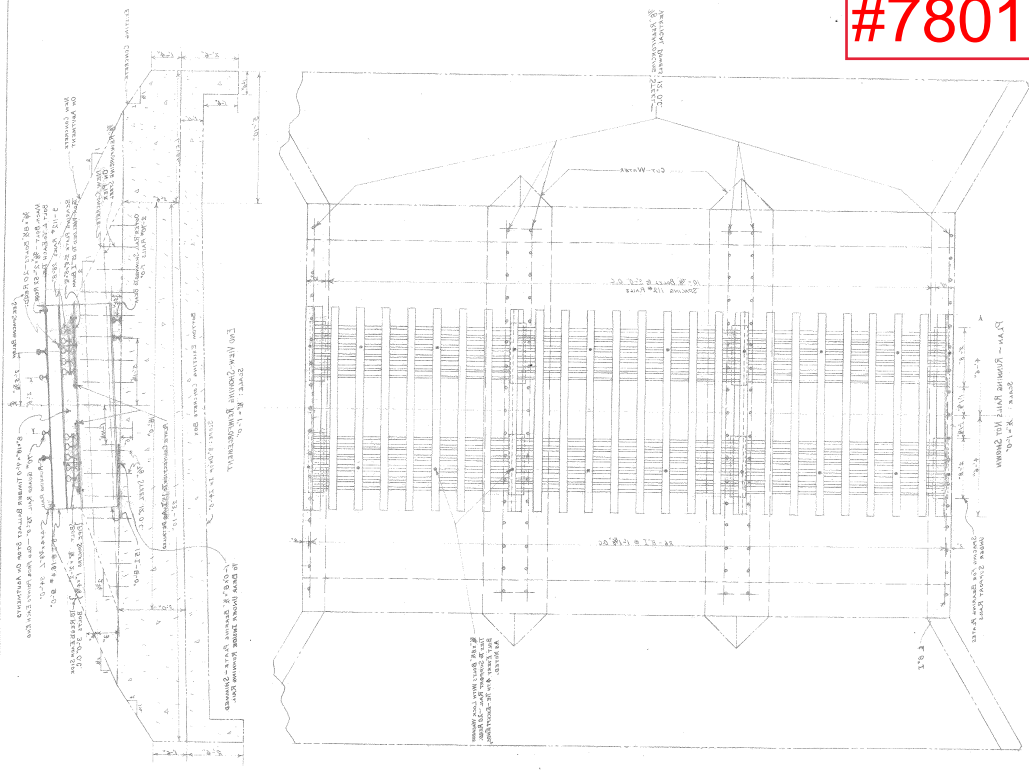
C 3536
 3

Scale 1/2" = 1 ft.
 Made by E.M.C.
 Traced by E.M.C.
 Checked by L.G.V. 7-27-09
 In Charge J.M. Bepko
 Bill Sheets 20
 July 26 1909

Paint: One coat of Linseed Oil,
 Red Lead for assembling,
 Parts inaccessible after erection two coats of Approved Graphite Paint.

2007

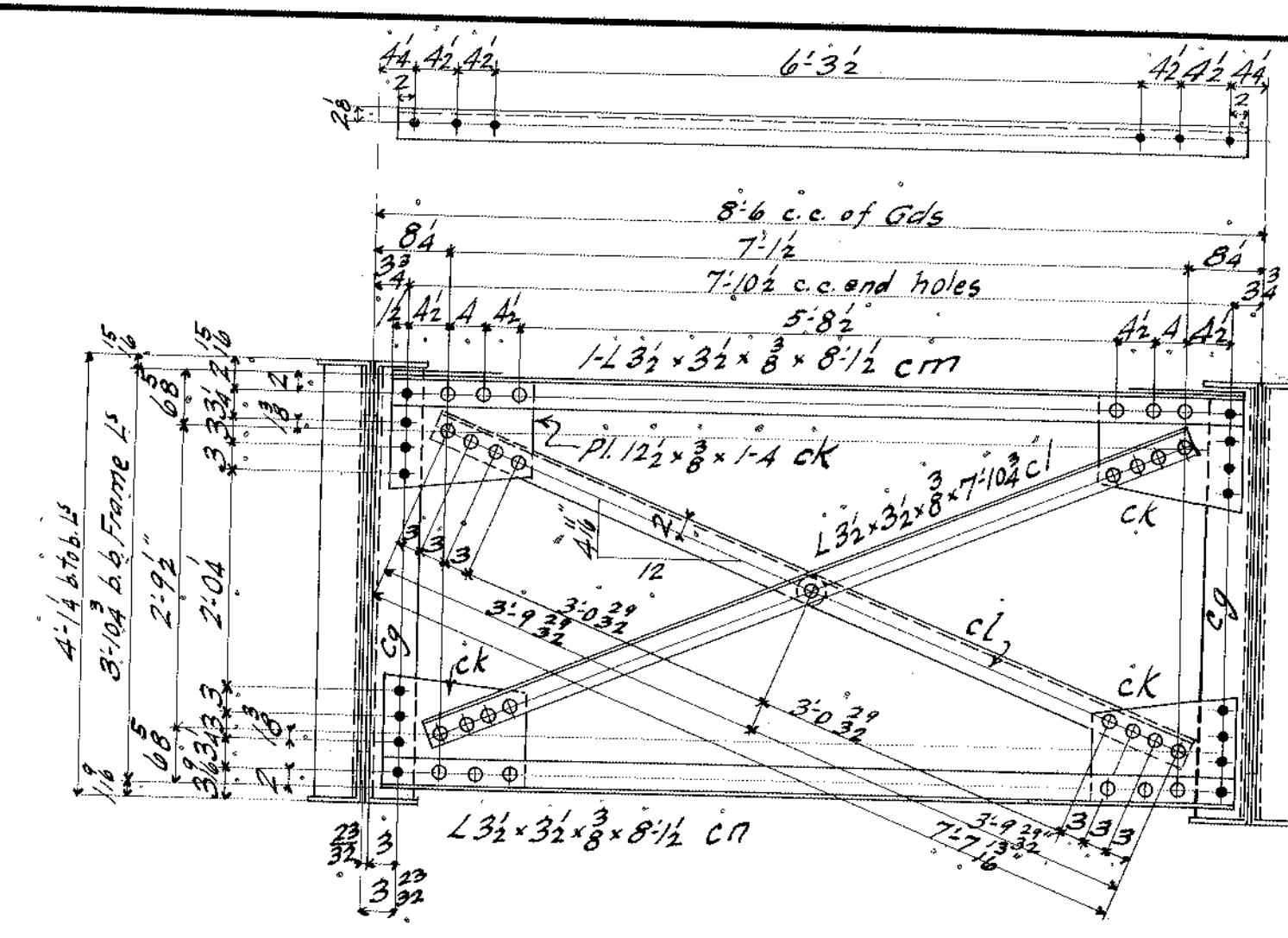
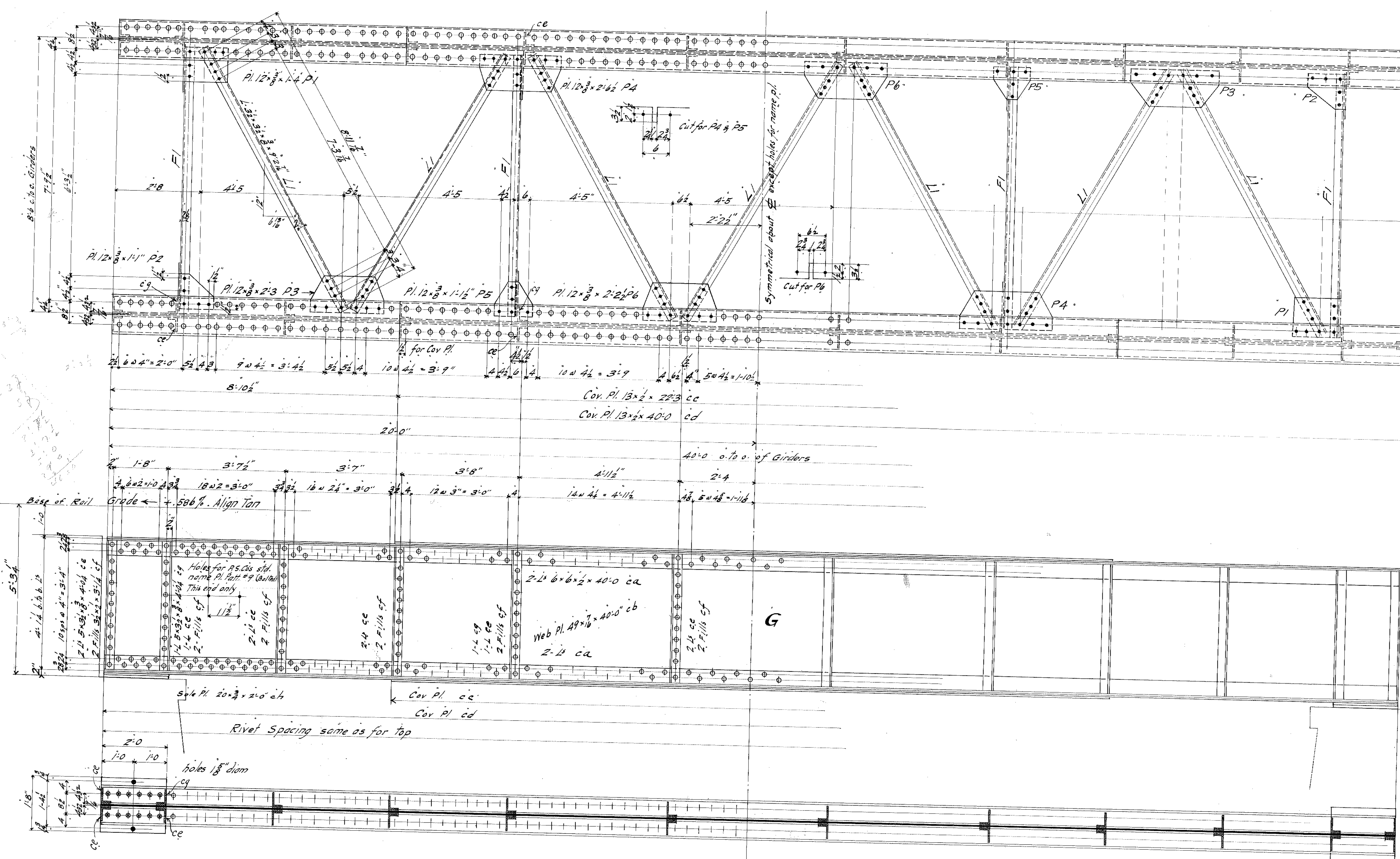
#7801



1. Dimensione in cm.
 2. Dimensione in mm.
 3. Dimensione in m.
 4. Dimensione in m.
 5. Dimensione in m.
 6. Dimensione in m.
 7. Dimensione in m.
 8. Dimensione in m.
 9. Dimensione in m.
 10. Dimensione in m.

NO.	DESCRIZIONE	UNITA'	QUANTITA'	VALORE
1
2
3
4
5
6
7
8
9
10

Rivets 7/8" diam. Open Holes 1 1/2" diam.



Frame F1

#7804

REQUIRED

2 Girders	G
4 Frames	F1
2 Plates	P1
2 "	P2
2 "	P3
2 "	P4
2 "	P5
2 "	P6
7 Laterals	L1
4 Mas Pls	MP

This drawing is to be used as an Erection Diagram for this Span

P. 21.26 2404

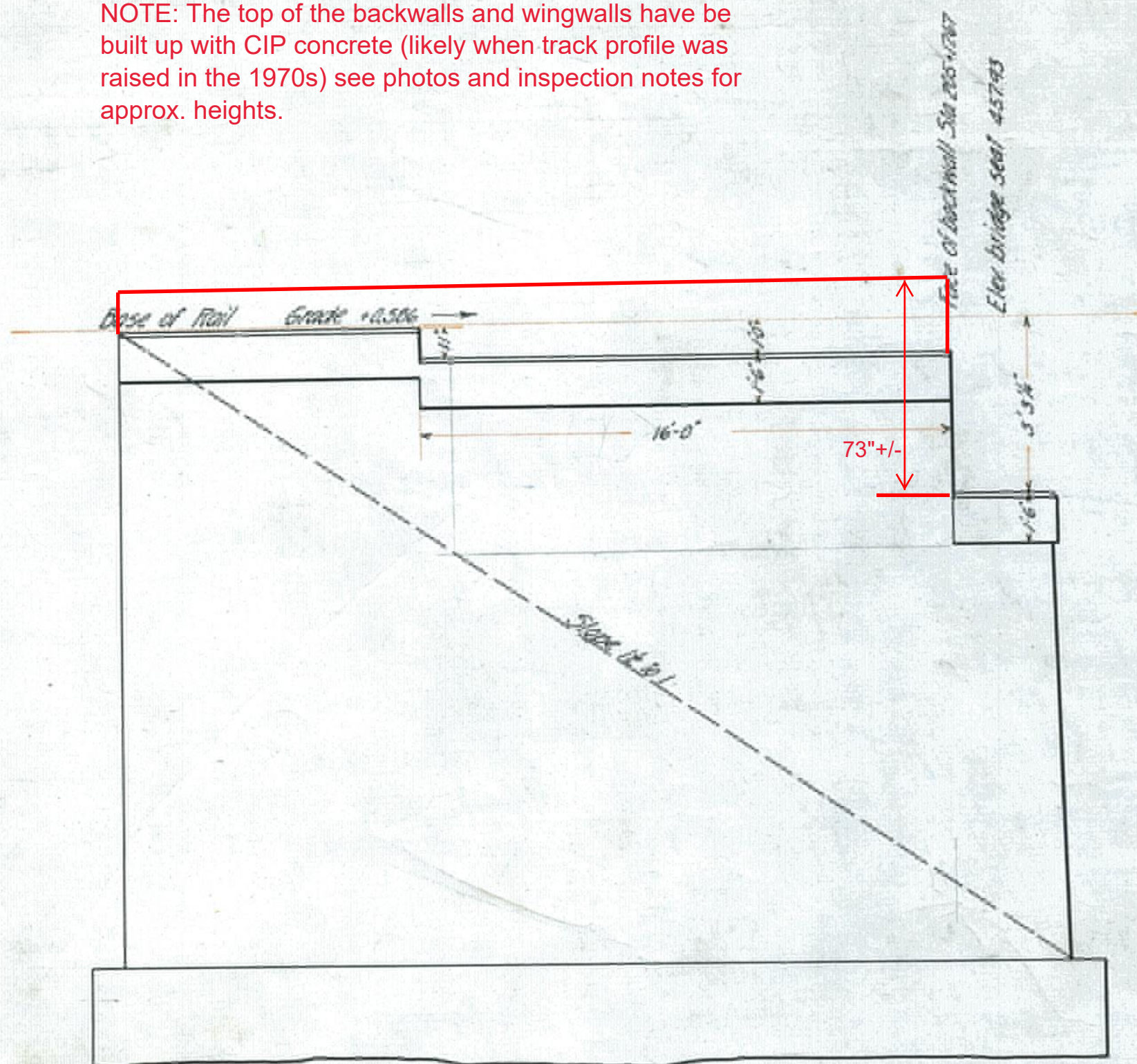
Bridge of Sta. No. 205.
1 - 40' - 0" S.T. Deck Pl. Gdr. Span,
Bangor & Arcostock R. R.
BUILT BY
THE PENNSYLVANIA STEEL CO.
Bridge & Construction Dep't,
Steelton, Pa.

C 3555
5

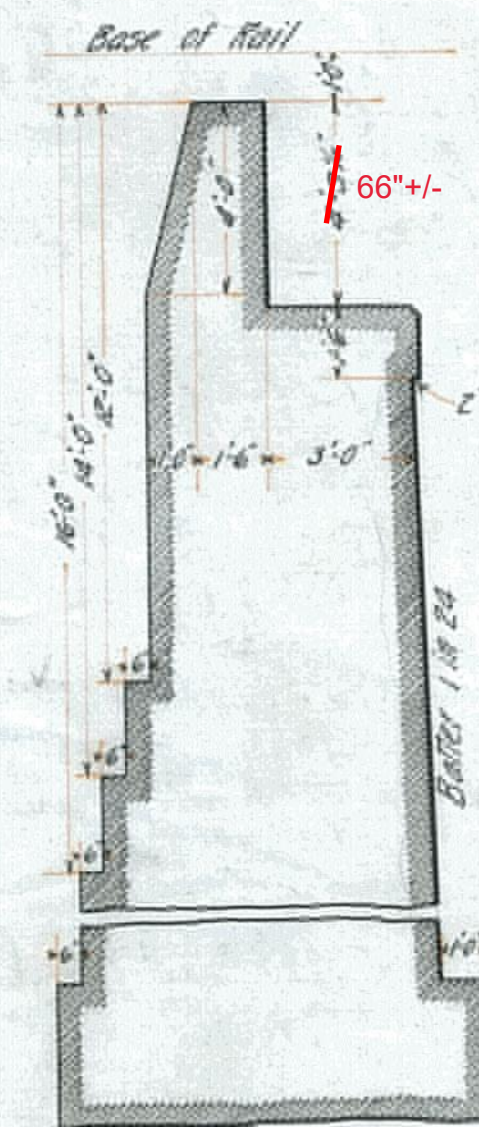
Paint: - One coat of Linseed Oil
Red Lead for assembling
Yards inaccessible after erection two coats of approved Graphite Paint.

Scale: 3/8" = 1 ft.
Made by J.M.D.
Traced by L.G.S.
Checked by L.G.V. 8-6-09
In Charge
Bill Sheets 50, 51
Aug. 6 1909

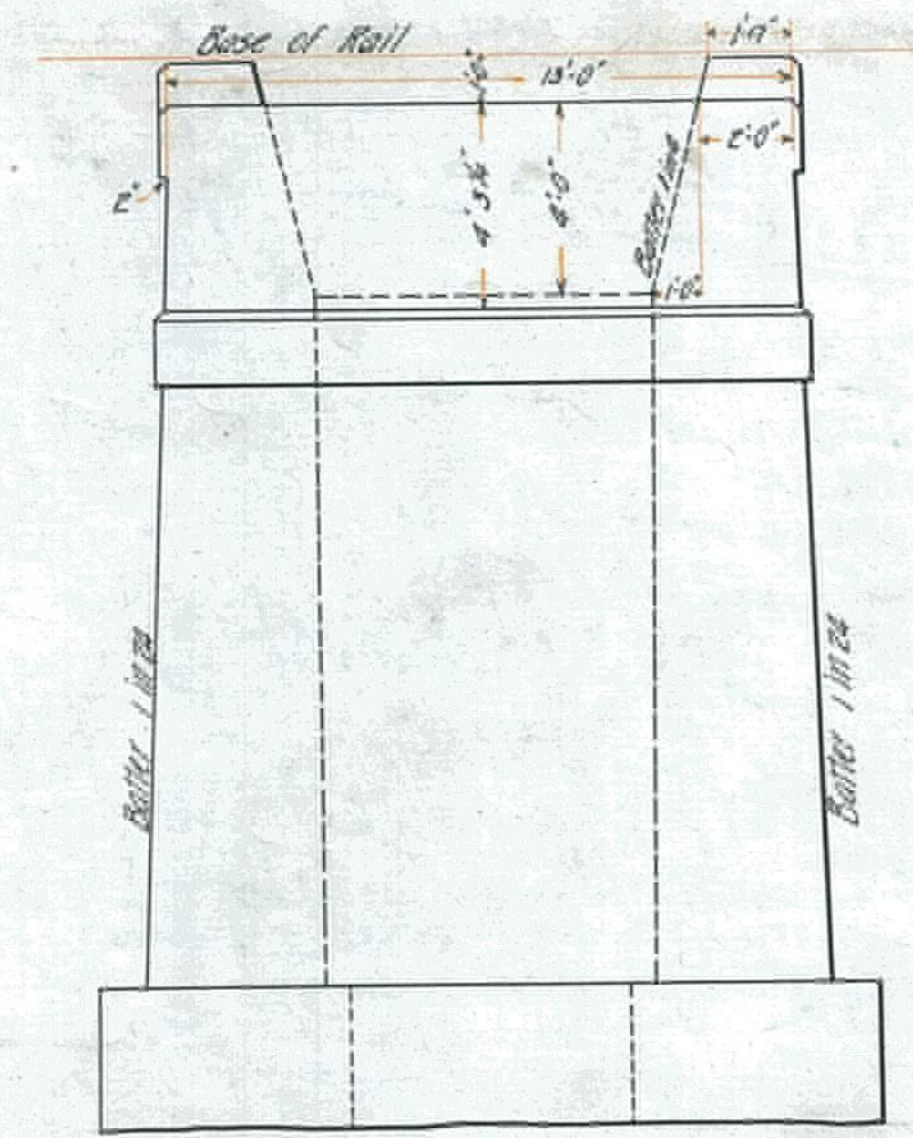
NOTE: The top of the backwalls and wingwalls have been built up with CIP concrete (likely when track profile was raised in the 1970s) see photos and inspection notes for approx. heights.



ELEVATION



SECTION ON AB



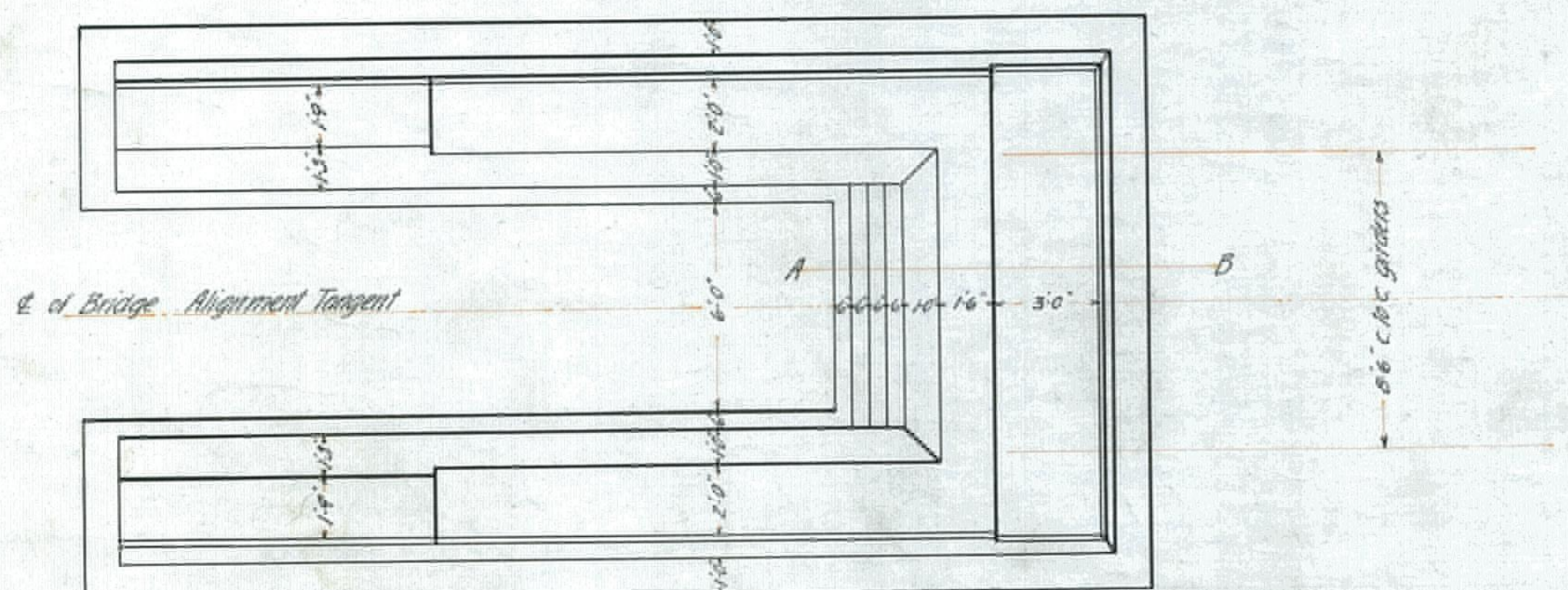
FRONT ELEVATION

Note:-

Elevation and Depth of foundation to be determined by Resident Engineer.

East abutment will be similar to west except as follows:

Face of backwall Sta 205+58.34.
Elev. bridge seat 458.15.



PLAN

D-4,09
R-21.26
BANGOR AND AROOSTOOK R.R.
WEST ABUTMENT FOR BRIDGE
OVER NORTH BRANCH OF PRESQUE ISLE STREAM
MAPLETON EXTENSION

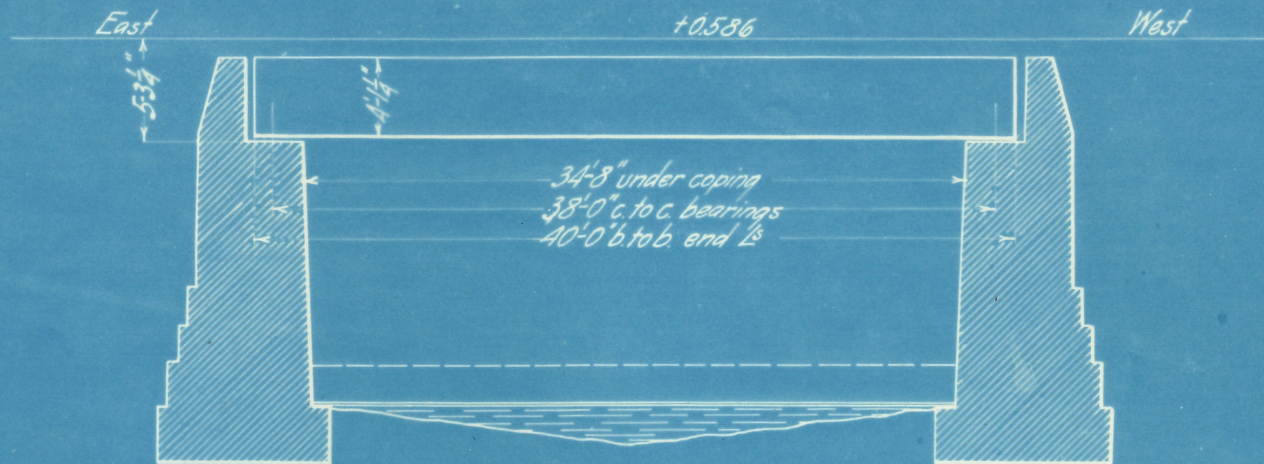
Houlton Me.

Scale 1/2" = 1'

Aug. 5, 1909.

North Branch Presque Isle Stream - 1st Crossing
Deck Plate Girder.

Grade. - +0.586%
Alignment. - Tangent.



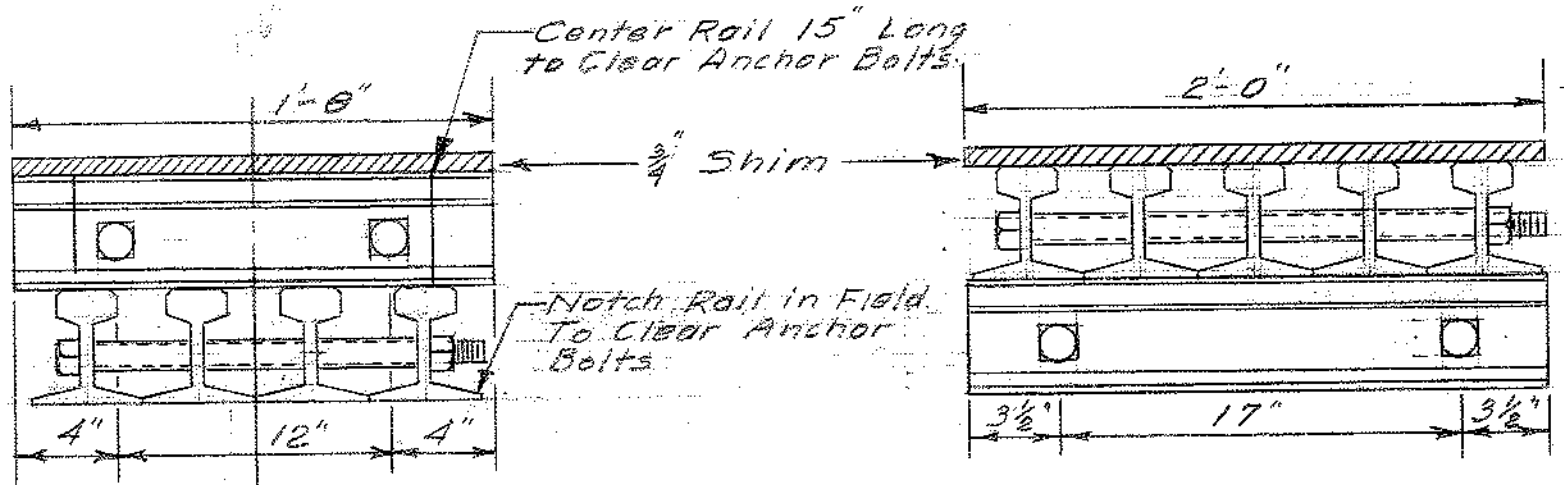
Plain Concrete "U" Abutments.

Scale. 10' = 1"

Built 1909	Built by Penna. Steel Co.	Ties - 8" x 12" x 13' - 57	Substr. Gen. Contractor. G.P. Treat.
Loading. - 2-142 ton Consolidation Loc's. followed by 4000# per ft	Erected by	Guard rails. - 6" x 8" & 8" x 8" - 160	Sub-Contractor.
Specifications. N.M.S.P.R. 1905.	Weight. 24,890*	Total Feet B.M. 7421	Total Cu. Yds.
	Cost.	Cost.	Cost.

V-110-6

V-110

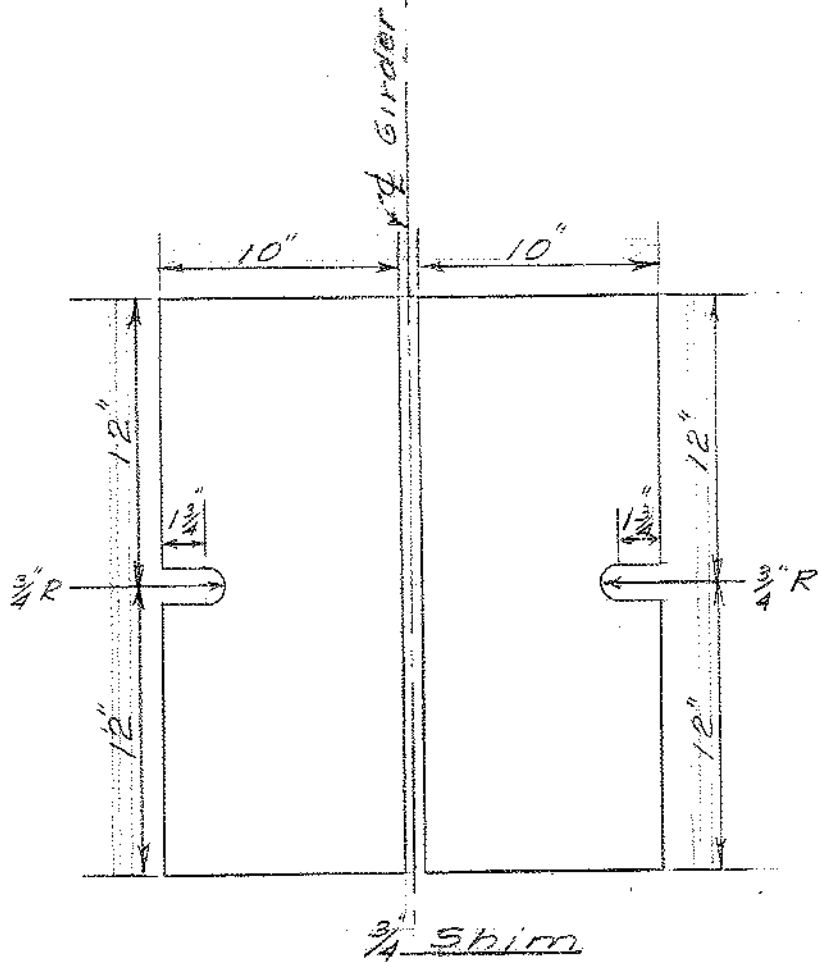


Notes:

1. Rails to be welded together.
2. Grillage to be imbedded in concrete after installation.
3. Four Grillages Required
4. 3/4" Shims to be Field Welded

Material For Four Grillages.

- 70# Rail 24" Long - 16
- 70# Rail 20" Long - 16
- 70# Rail 15" Long - 4
- 3/8" x 17" Bolts - 8
- 3/8" x 21" Bolts - 8
- 3/4" x 10" x 24" Shims - 8
- Pipe Sleeves Approx 3 1/2" long - 56
- 1 1/4" x 12" Bolts Threaded one end 3" - 8



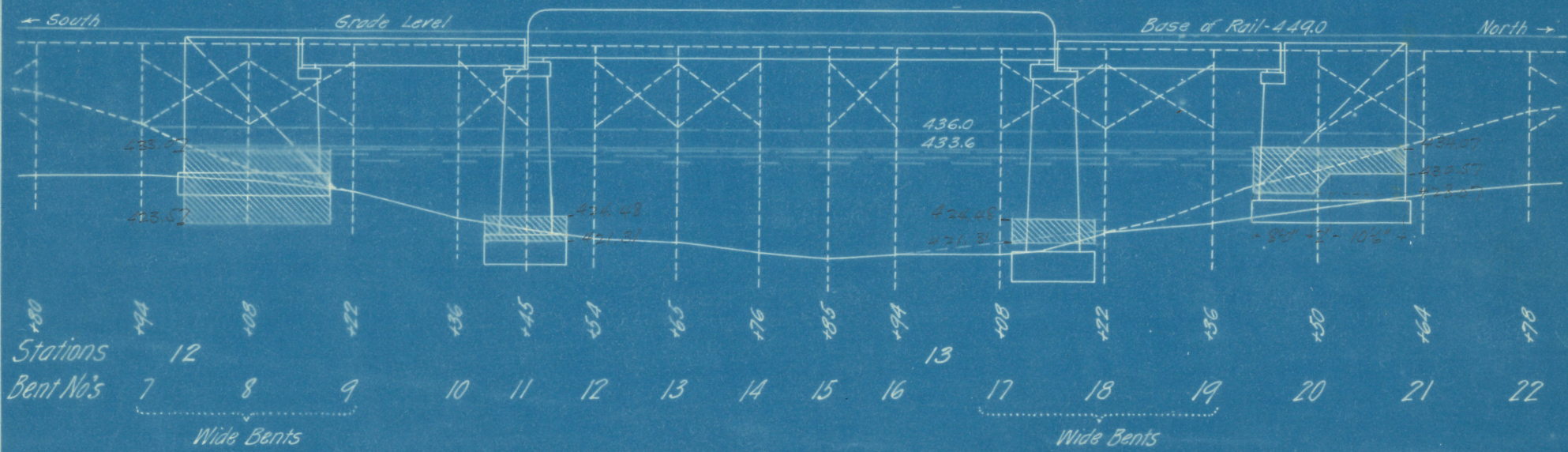
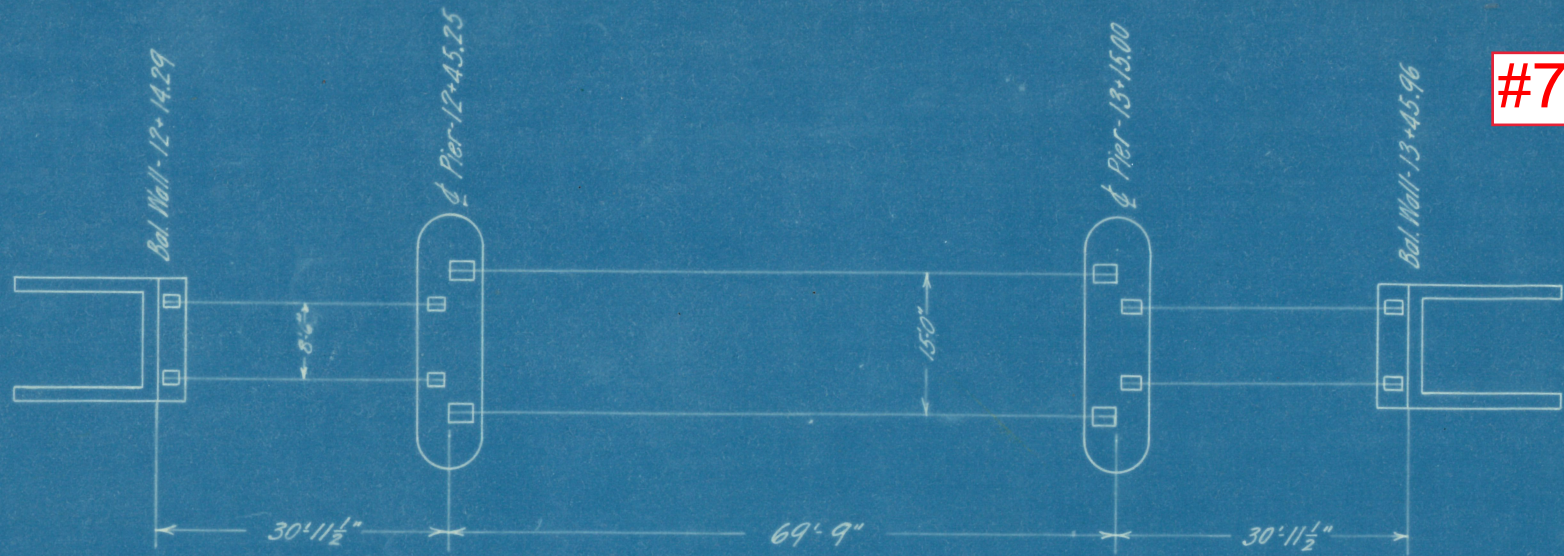
P-21.26

Bridge D-4.04

Grillage For 10 1/4" Raise

Scale 1 1/2" = 1'-0" 1-29-70

#7805



Figures for elevations
of Footings from R.L.H.

"Figures for elevations
of footings from R.L.H.
Mar 24, 1910"

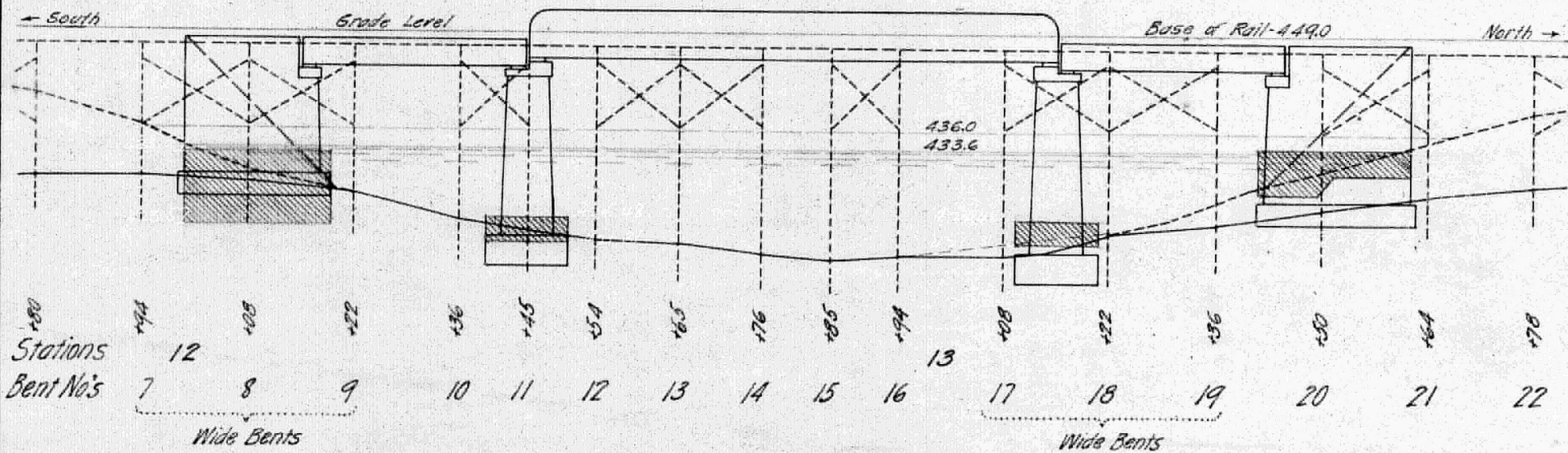
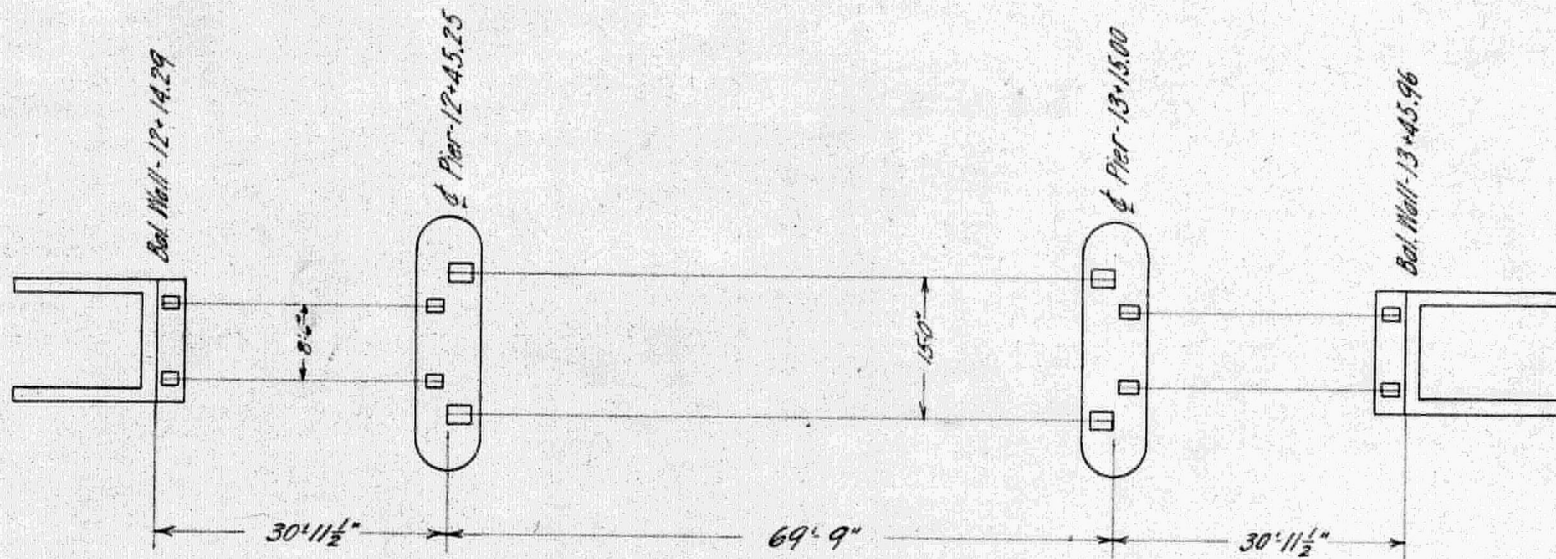
Bangor and Aroostook R.R.
Sketch of Bridge Over Presque Isle Stream
Scale 20'=1"

Houlton, Dec. 29, 1909.

2062
694

4-6

V-109 601-A

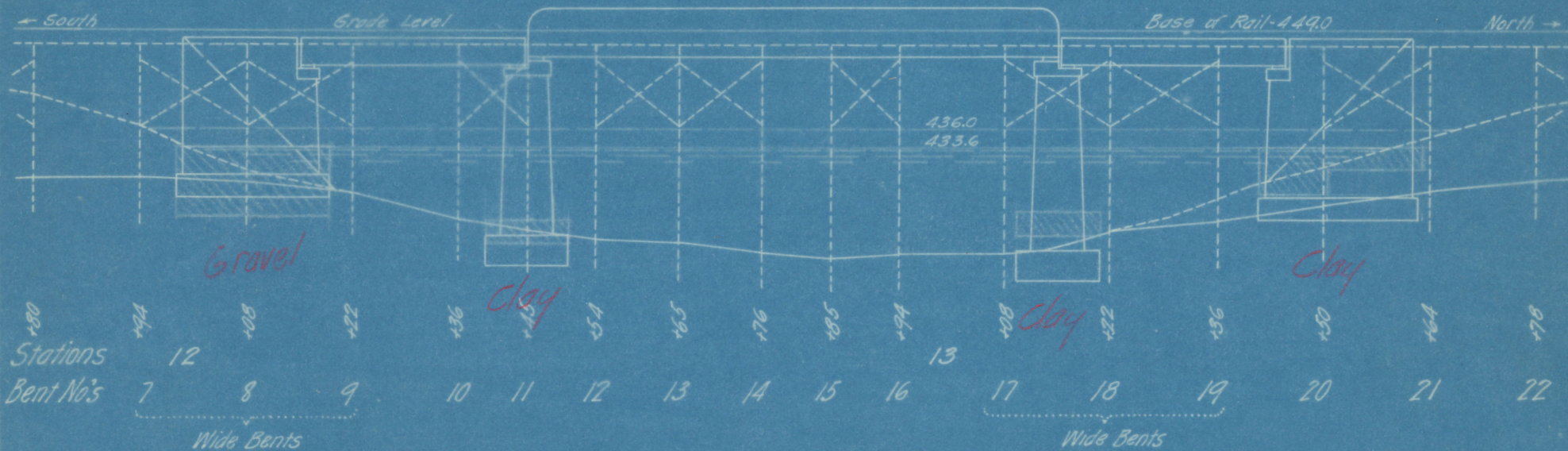
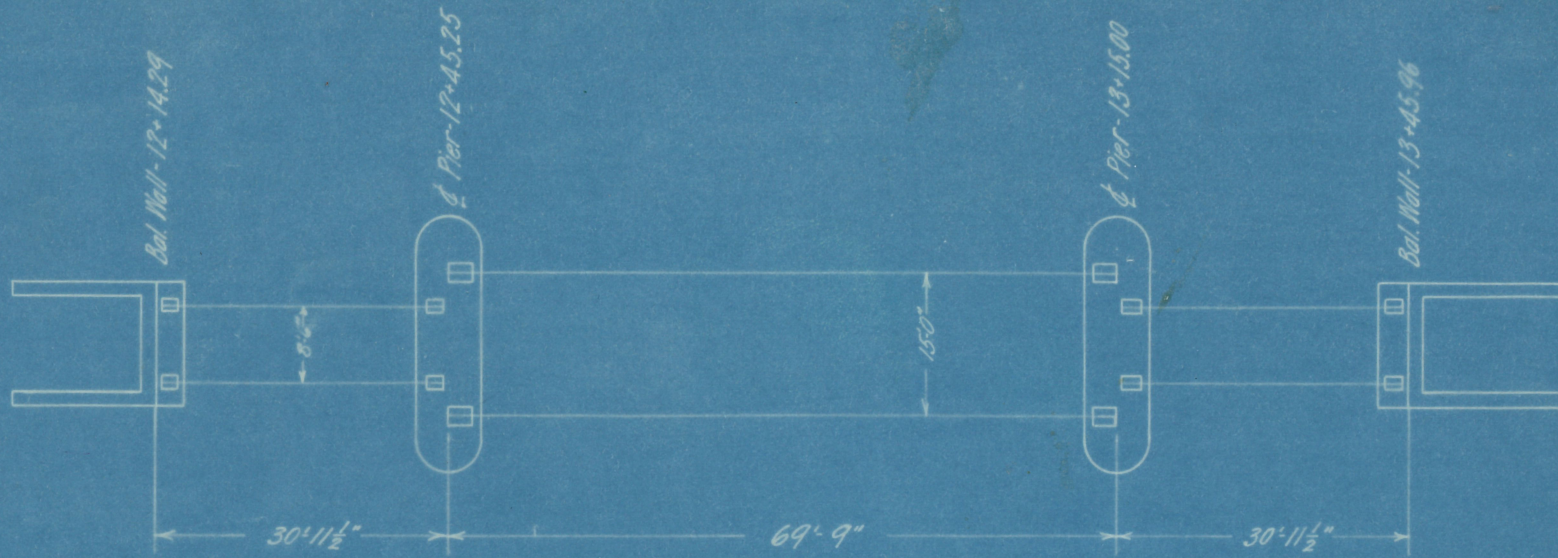


Bangor and Aroostook R.R.
 Sketch of Bridge Over Presque Isle Stream
 Scale 20' = 1"

Houlton, Dec. 29, 1909.

2062
 694

4-6



Shaded areas are footings as reported by S. Gray.

Bangor and Aroostook R.R.
 Sketch of Bridge Over Presque Isle Stream
 Scale 20'=1"

Houlton, Dec. 29, 1909.

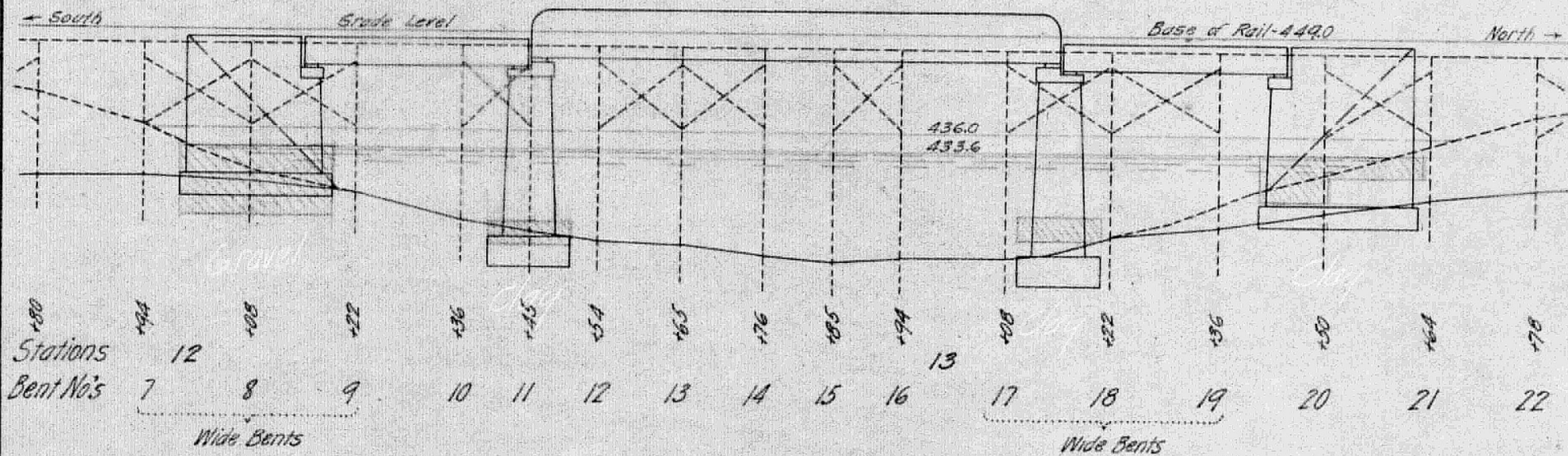
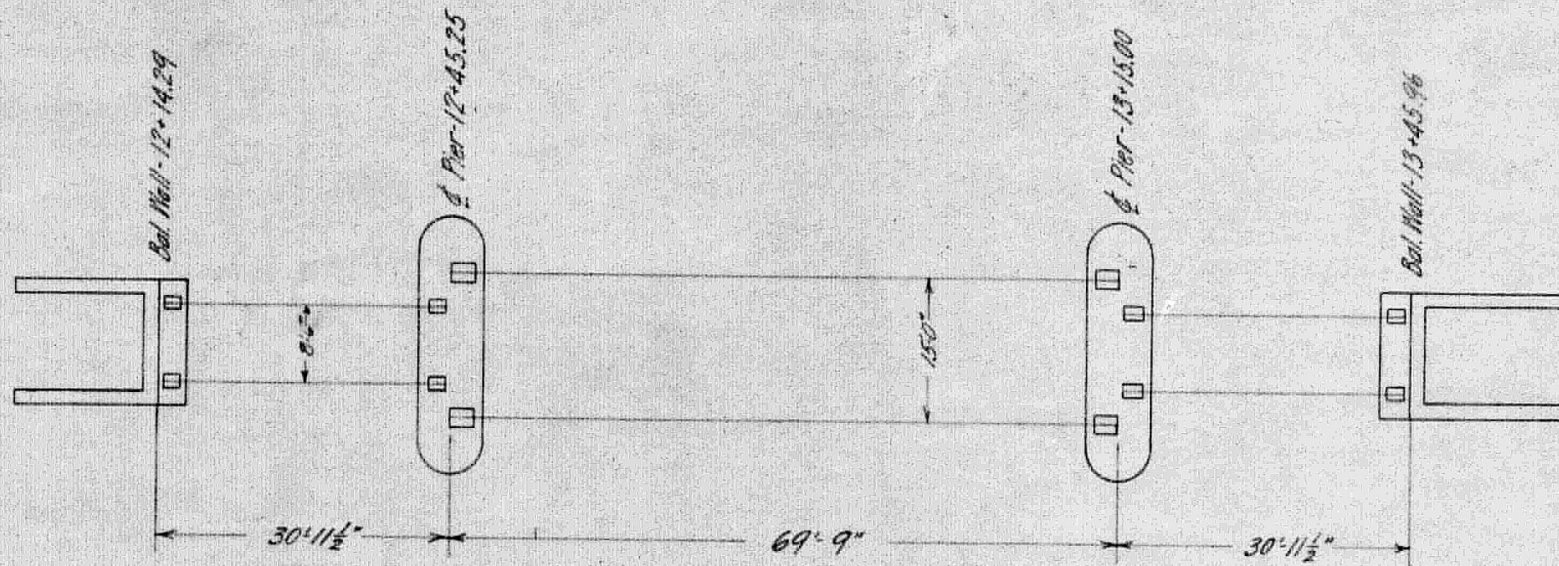
2061
694

"Shaded areas are footings as reported by S. Gray"

4-6

V-109 A 128

10



Shaded areas are footings as reported by S. Gray

Bangor and Aroostook R.R.
 Sketch of Bridge Over Presque Isle Stream
 Scale 20'=1"

Houlton, Dec. 29, 1909.

2061
 694

A-6

601-102