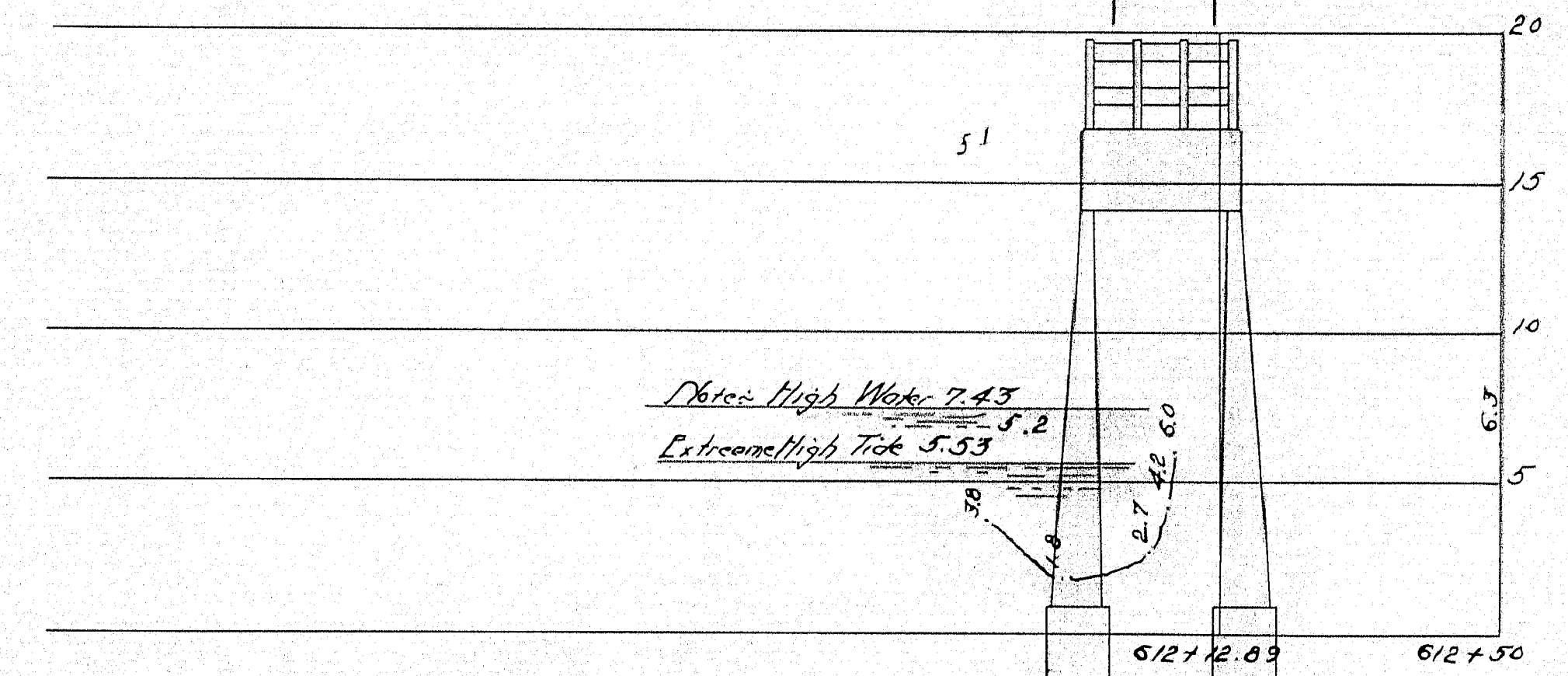
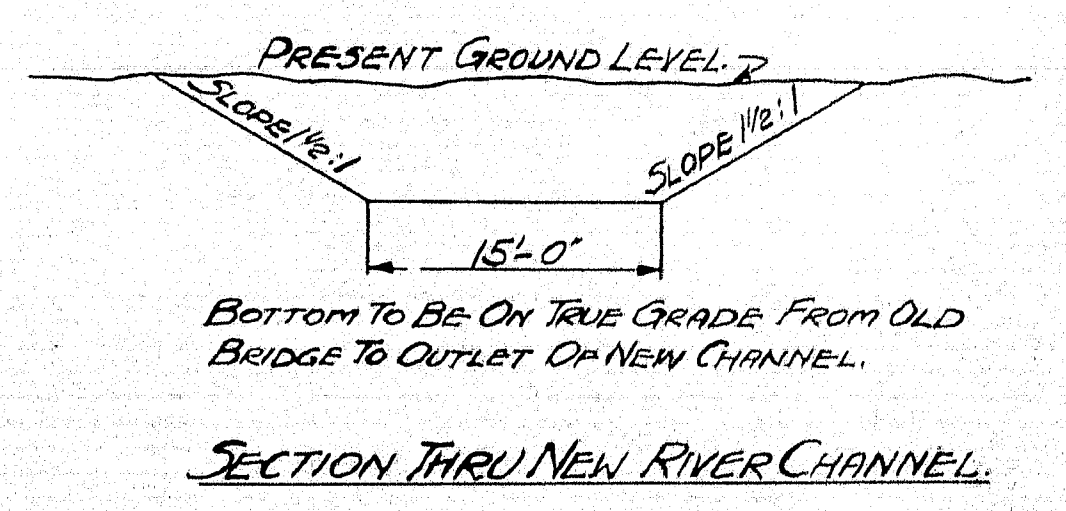


~ PLAN ~  
SCALE 1"=20' DRAINAGE AREA 6.59 MI.



~ PROFILE ~  
HORIZ. 1"=20'  
SCALES VERT. 1"=5'

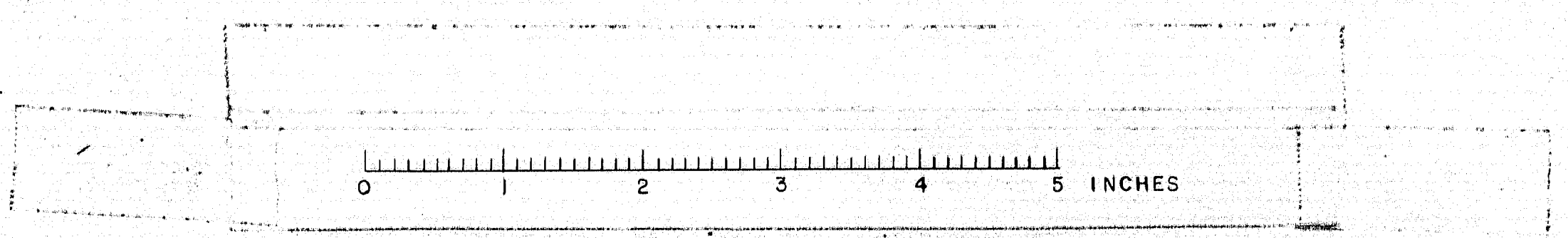
Foundation: - Practically no penetration at new bridge location  
Stream bed: - Rocks and gravel.  
High Water Elev.: - 7.43 (Approx.)  
Extreme High Tide: - 5.53 (Approx.)  
Abut #1: - Part concrete, part masonry.  
Abut #2: - Stone masonry.  
Superstructure: - Concrete slab.  
This slab has a diagonal crack on the bottom extending from middle of #1 Abut. to a point near the upstream end of #2 Abut.  
Seepage is working thru this crack. It was caused by the washing away of #1 Abut. by high water from a cloudburst May, 17, 1916.



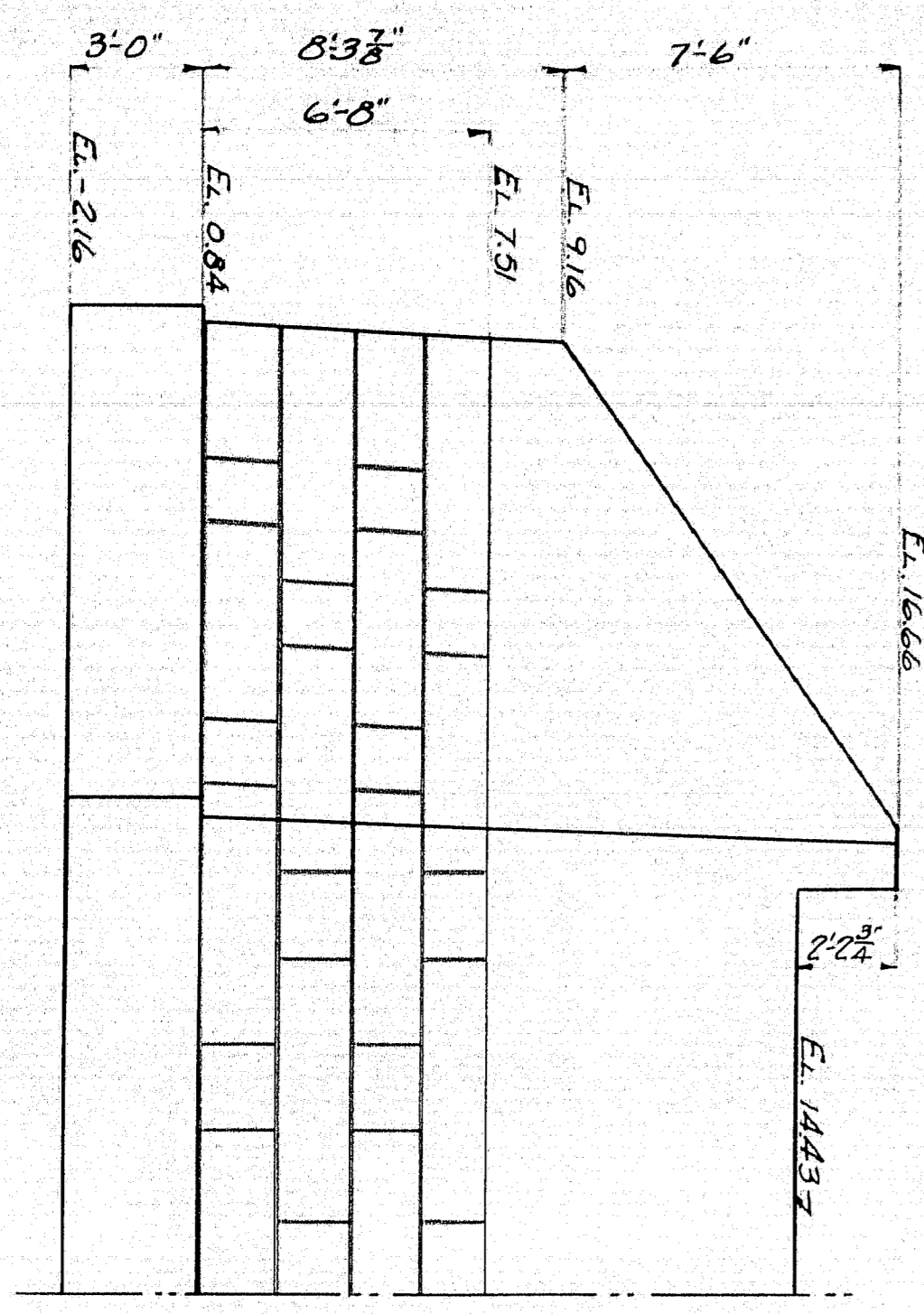
SECTION THRU NEW RIVER CHANNEL.

MAINE HIGHWAY COMMISSION  
BRIDGE DIVISION  
BUFFAM BRIDGE  
OVER  
WEBHANET RIVER  
IN THE TOWN OF  
WELLS, YORK COUNTY  
SURVEY PLAN  
SHEET 1 OF 3 AUGUST 14, 1920

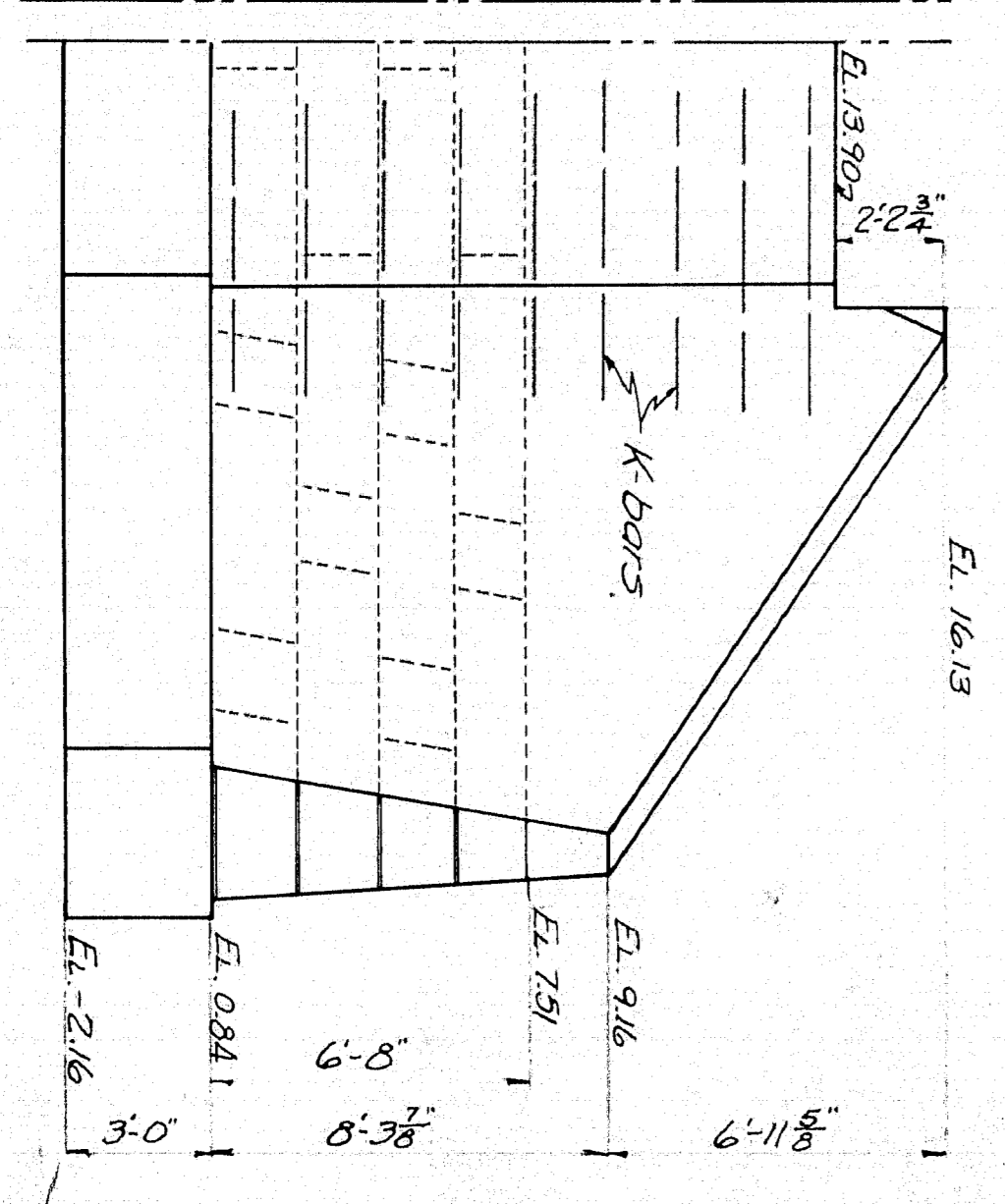
Surveyed by Leighton  
Plan by St. Paul



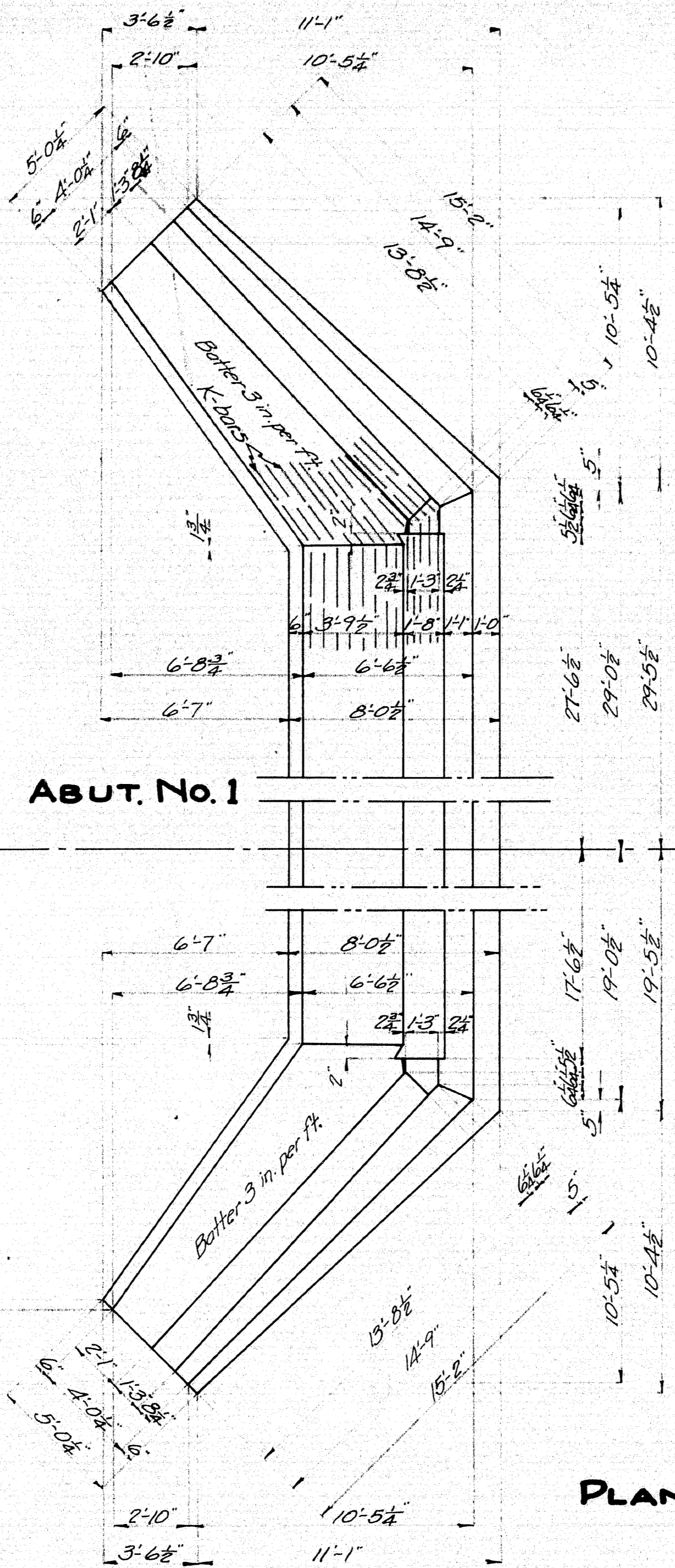
FRONT ELEV. ABUT. No. 2.



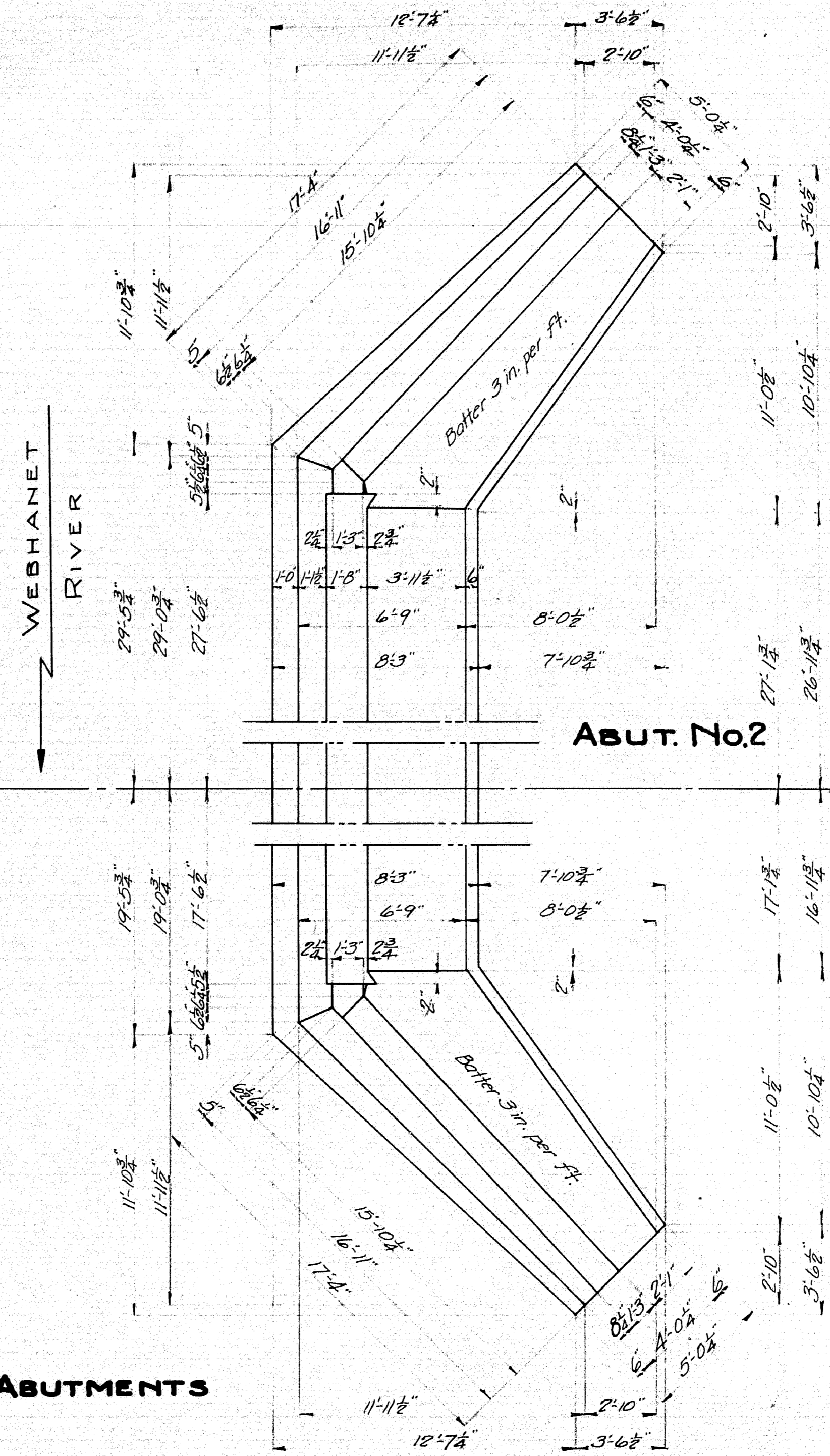
REAR ELEV. ABUT. No. 1.



ABUT. No. 1

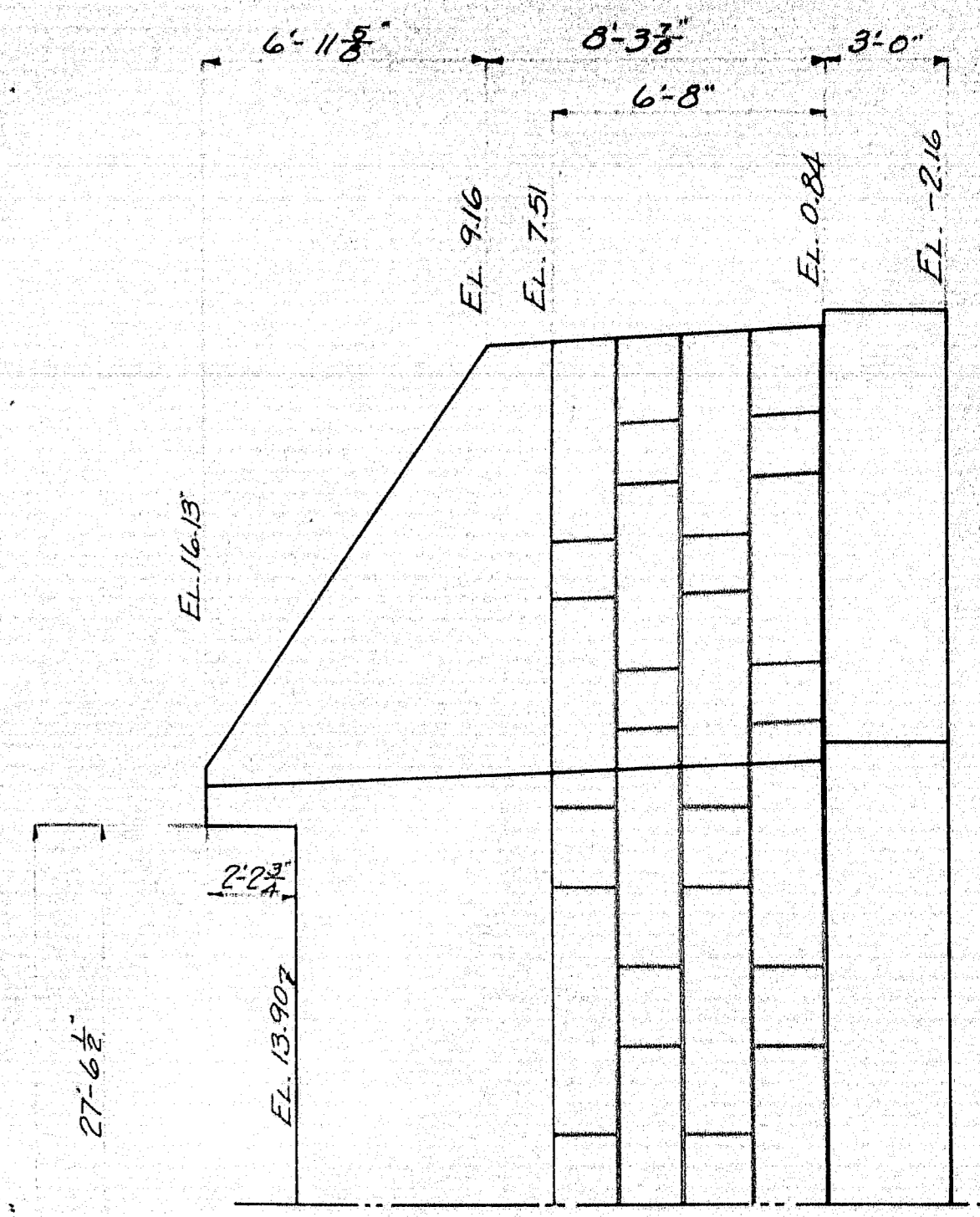


ABUT. No. 2

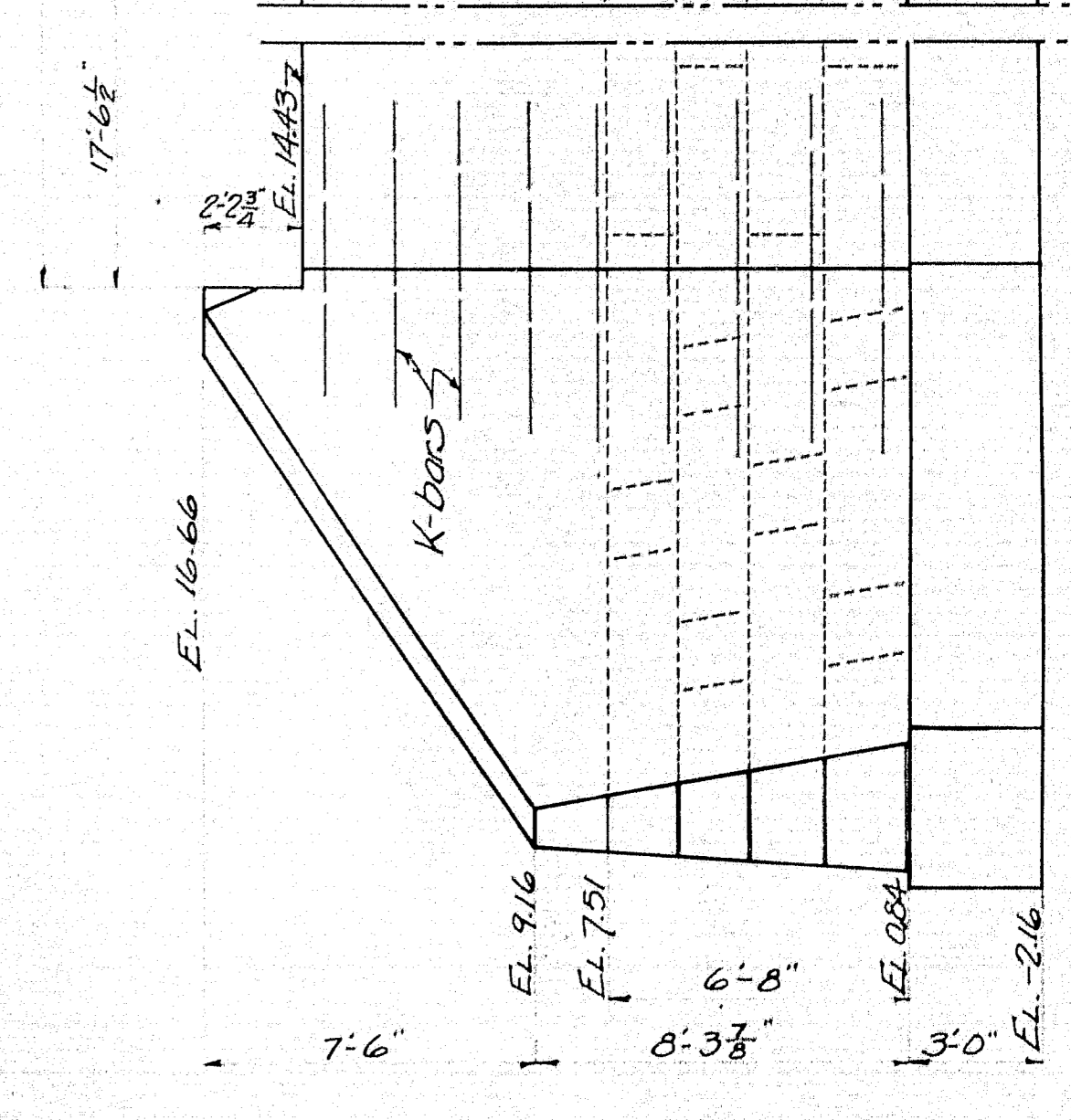


PLAN - ABUTMENTS

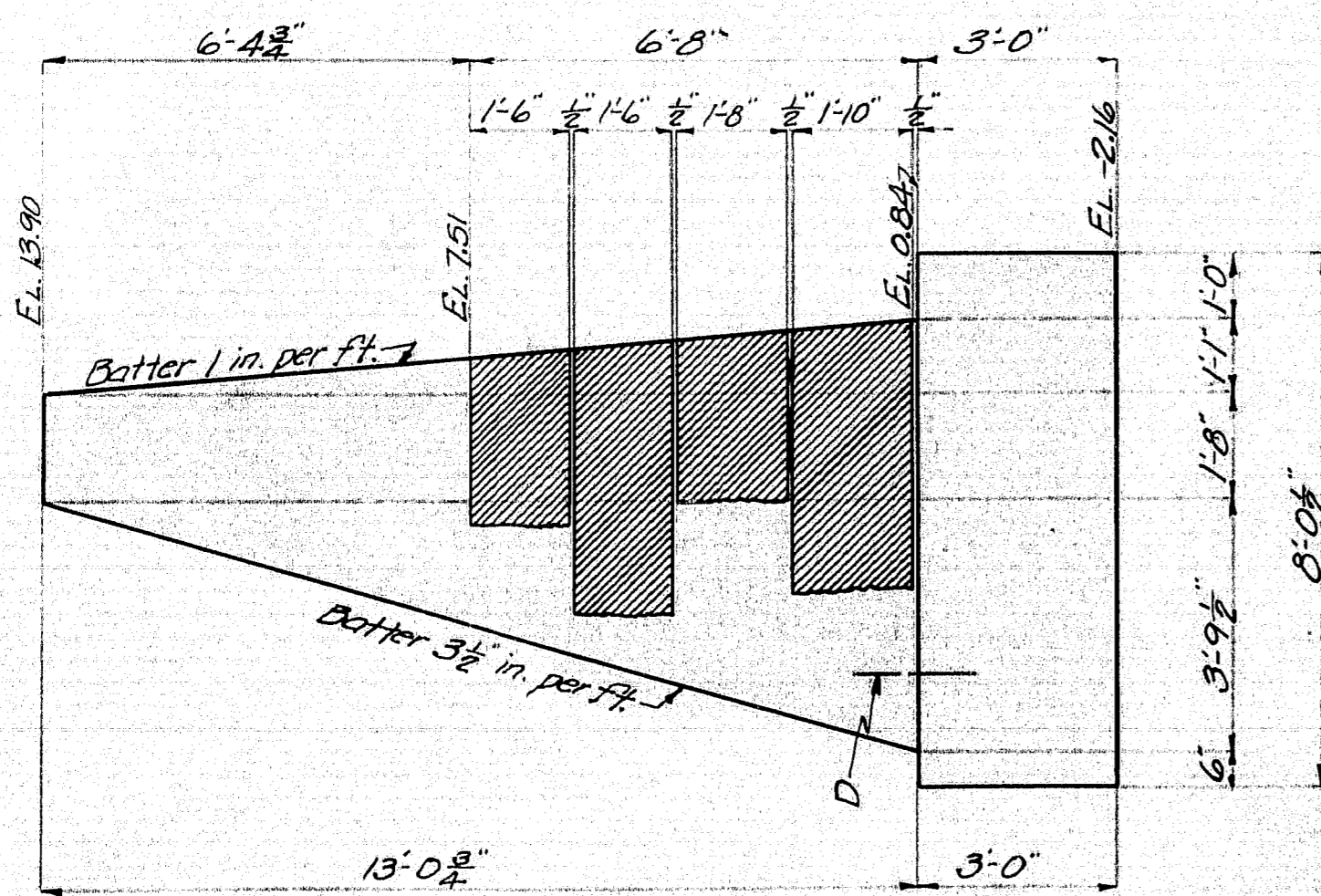
FRONT ELEV. ABUT. No. 1



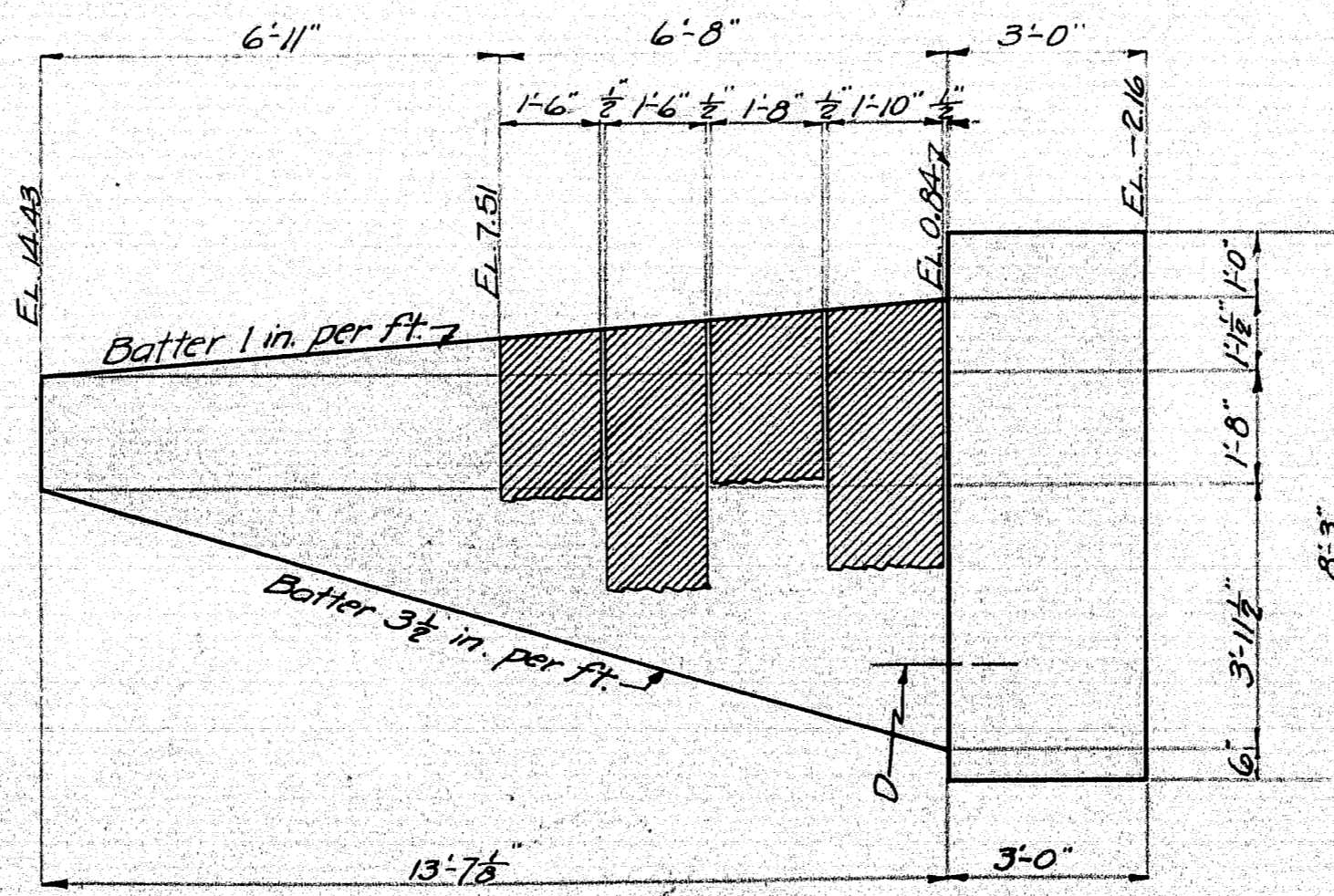
REAR ELEV. ABUT. No. 2.



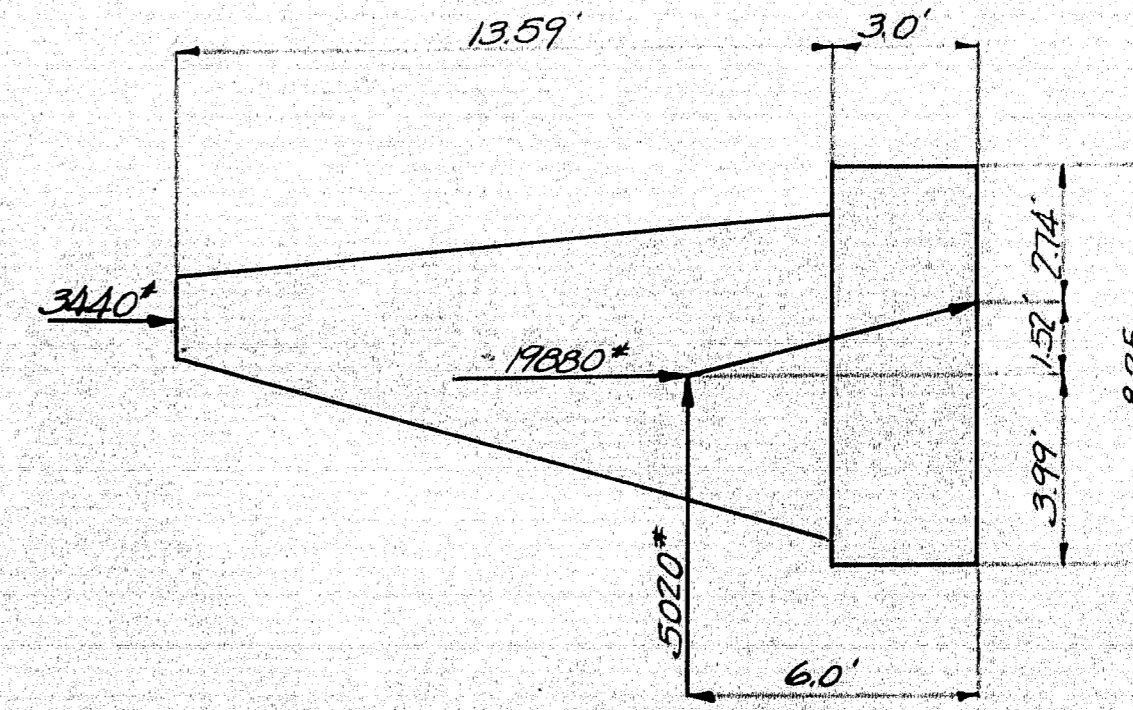
SECTION - ABUT. No. 1



SECTION - ABUT. No. 2

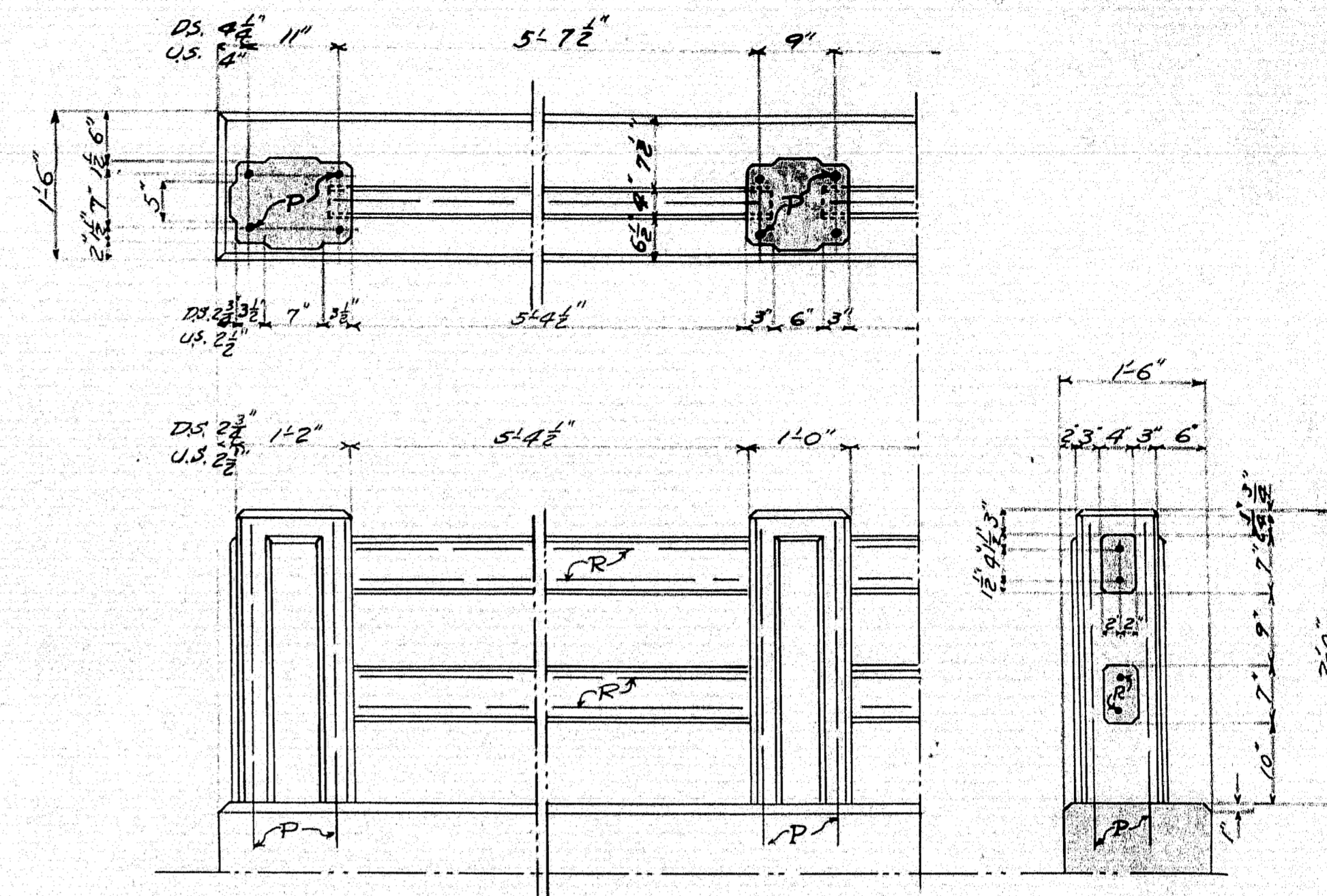
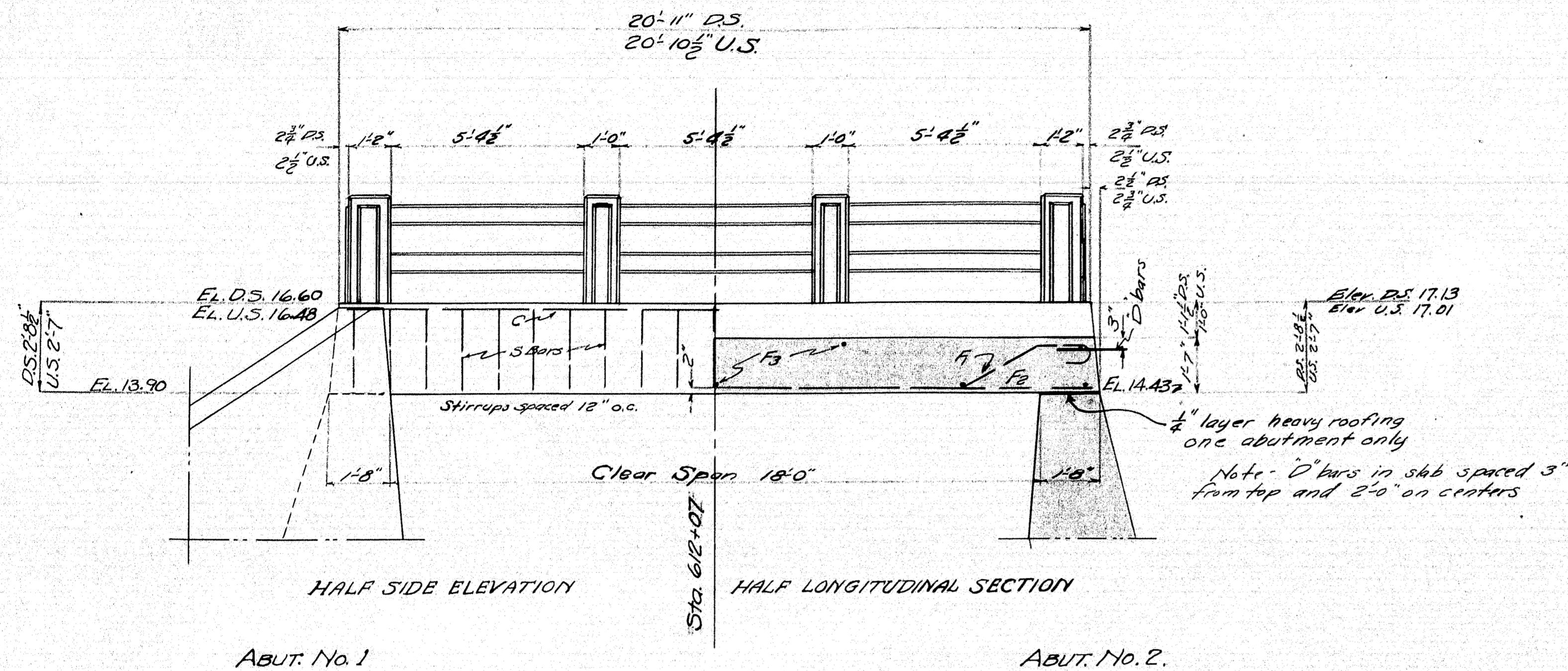


ABUT. ANALYSIS



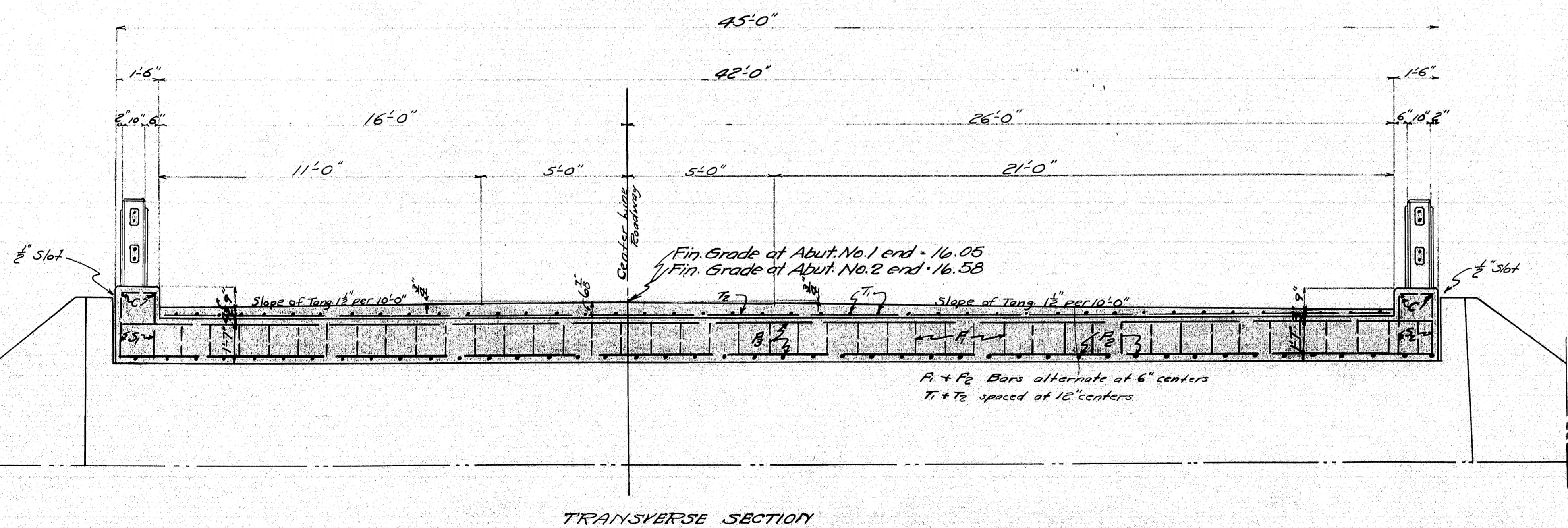
NOTE - Bars "K" at junction of wings and abutment breast walls, to be spaced 6" from back form and 1'-6" vertically, also 6" below bridge seat at 4" centers, to be bent in field to fit form. Bars "D" in footings to be spaced 1'-6" from back footing and 1'-0" centers.

MAINE HIGHWAY COMMISSION  
BRIDGE DIVISION  
**BUFFAM BRIDGE**  
OVER  
**WEBHANET RIVER**  
IN THE TOWN OF  
**WELLS, YORK CO.**  
SUBSTRUCTURE  
SHEET 2 OF 3, AUGUSTA ME. JAN. 26, 1931.



Note- Cover the  $\frac{1}{2}$ " slot between superstructure and wing walls on the back side with two layers of heavy roofing felt. Coat concrete and back side of each layer of felt as applied with hot tar or asphalt. Felt is to be 10" wide and the area to be covered by the felt is to be recessed  $\frac{1}{4}$ " by nailing thin strips to the form before the concrete is placed.

RAIL DETAILS  
Curb and rails to be cast together. Steel for posts to be set in curb. Precast rail bars in lengths of 5'-9". Place rail bars in position with ends projecting into post forms 2". Wrap end 6" with two thicknesses of light roofing felt. Fold in ends and when post forms are removed cut away all felt exposed. Panels on posts to be  $\frac{1}{2}$ " thick. Chamfer all exposed edges of concrete  $\frac{1}{4}$ " unless otherwise indicated.



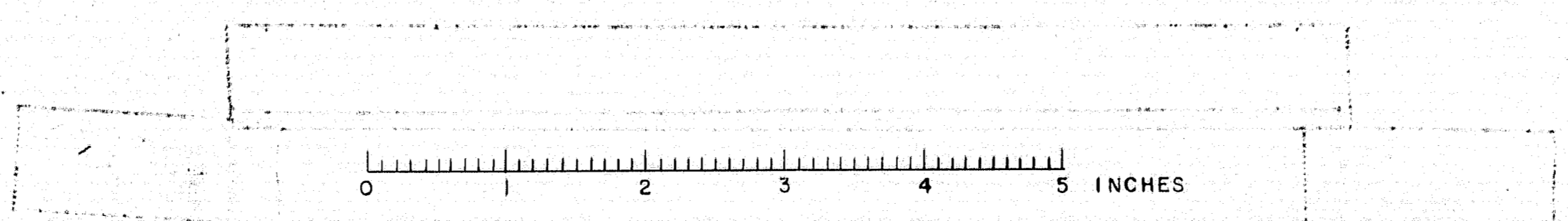
STEEL SCHEDULE				
Mark	Size	No. Reqd	Length	Location
F1	1 $\frac{1}{2}$ "	45	23'-4 $\frac{1}{2}$ "	Slab
F2	1 $\frac{1}{8}$ "	45	20'-11"	"
F3	$\frac{1}{2}$ "	11	44'-8"	"
C	$\frac{1}{2}$ "	4	20'-7 $\frac{1}{2}$ "	Curbs
S1	$\frac{1}{2}$ "	21	5'-11"	D.S. Curb
S2	$\frac{1}{2}$ "	21	5'-8"	U.S. "
P	$\frac{3}{8}$ "	32	4'-0"	Posts
R	$\frac{3}{8}$ "	24	5'-8 $\frac{1}{2}$ "	Rails
K	$\frac{3}{8}$ "	52	8'-0"	Abut breast walls (wings)
T1	$\frac{3}{8}$ "	42	20'-9"	Wearing surface
T2	$\frac{3}{8}$ "	21	41'-8"	"
D	$\frac{3}{8}$ "	180	1'-6"	Slab + footing

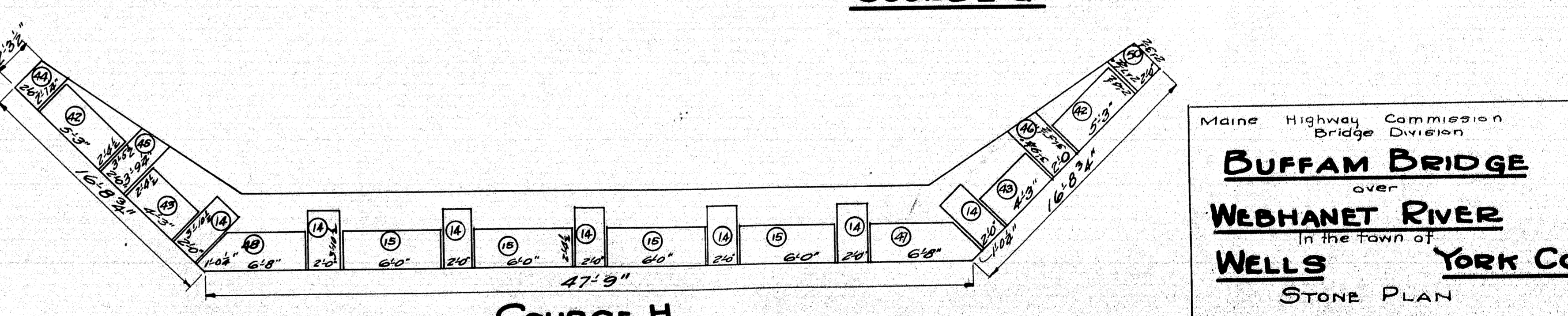
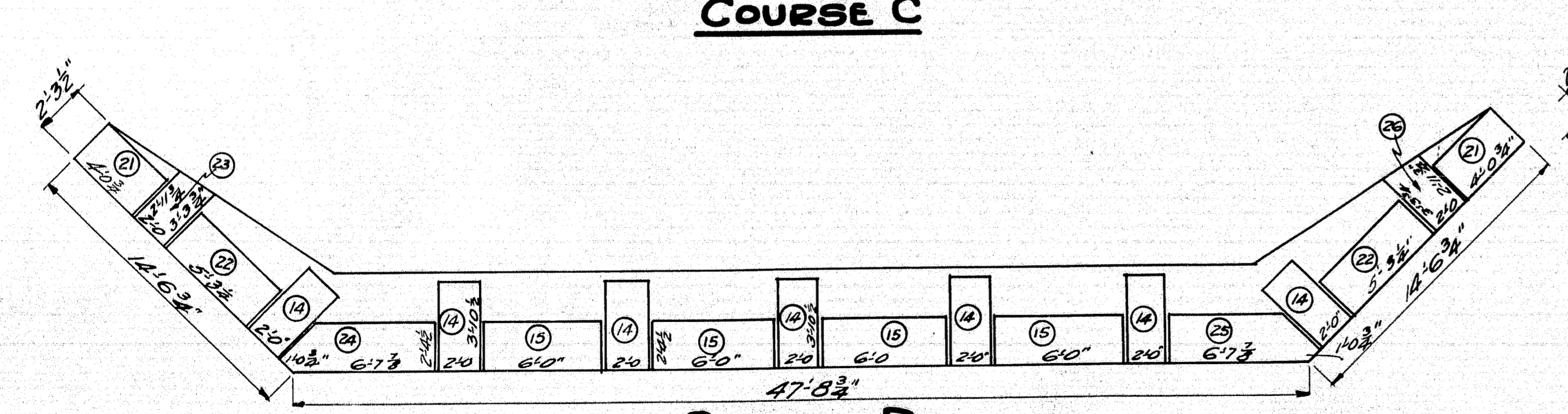
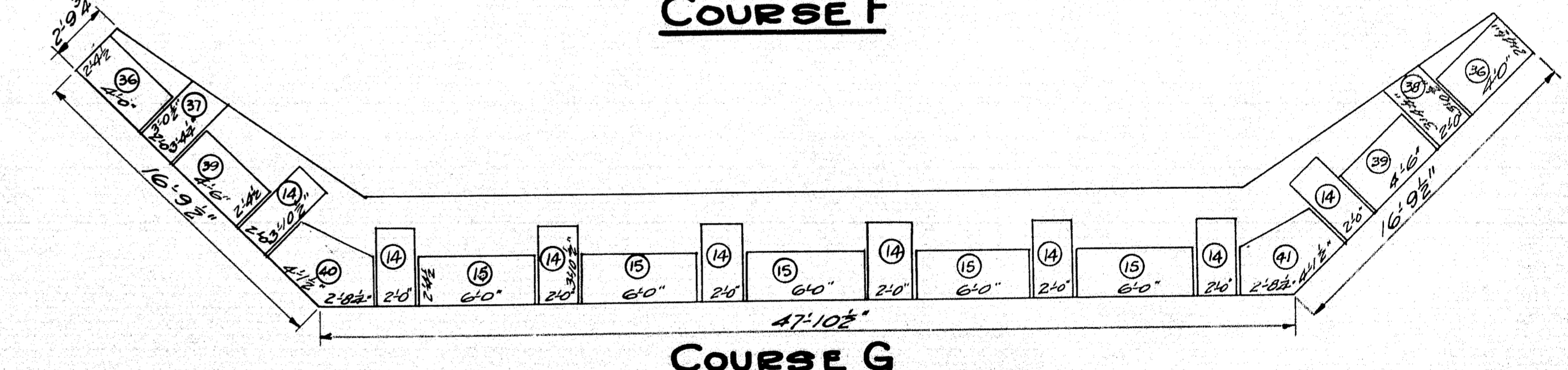
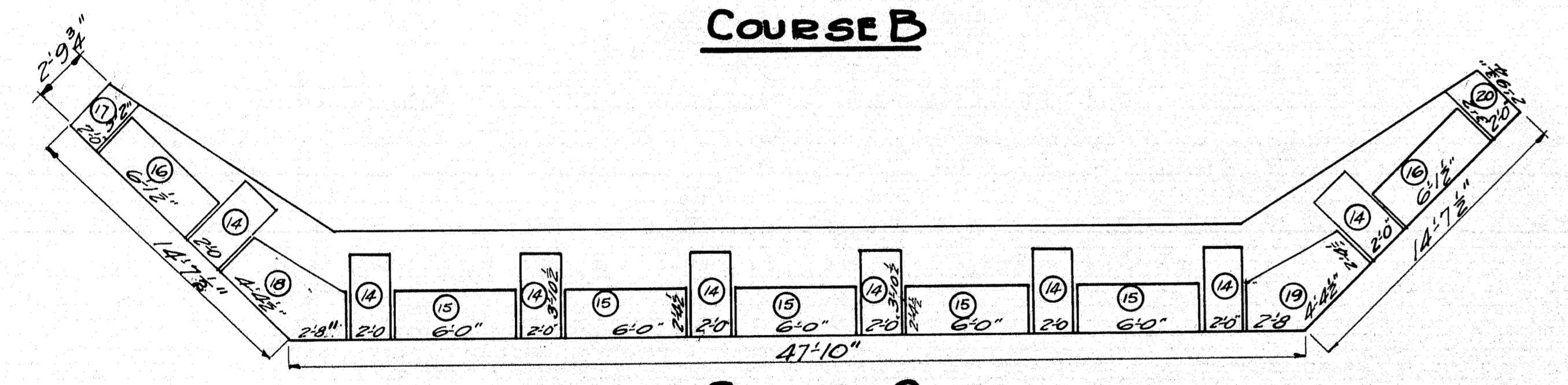
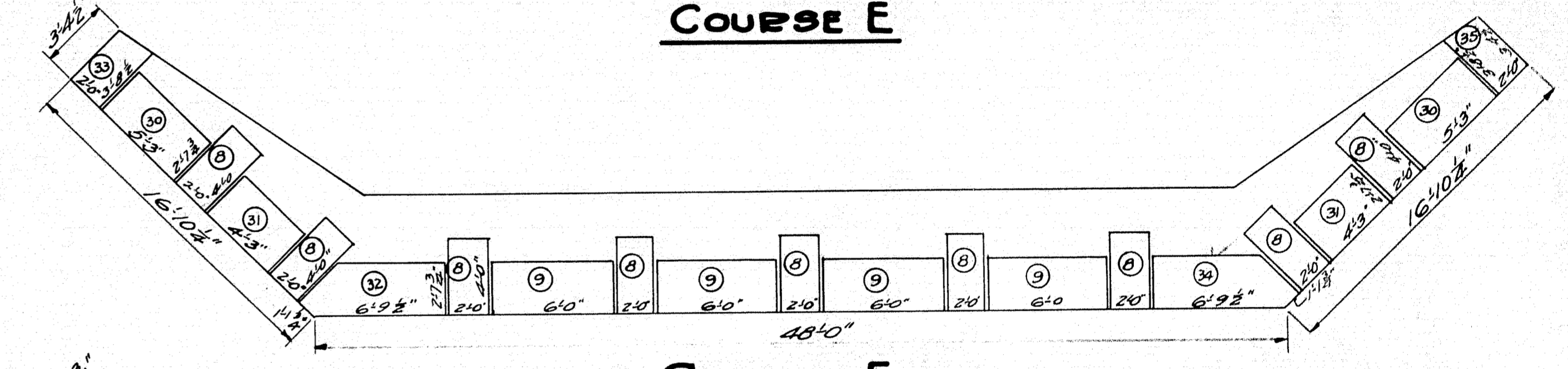
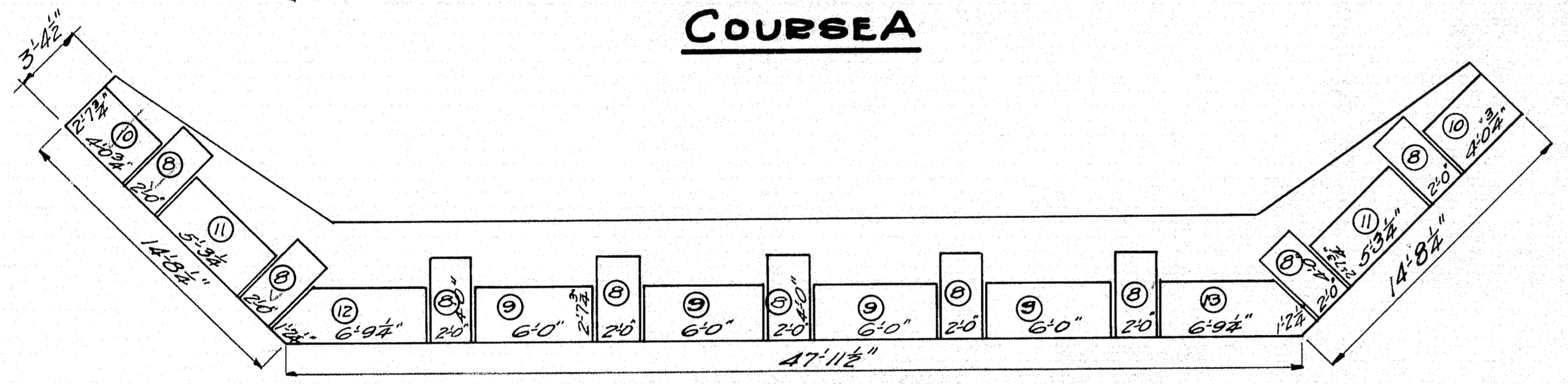
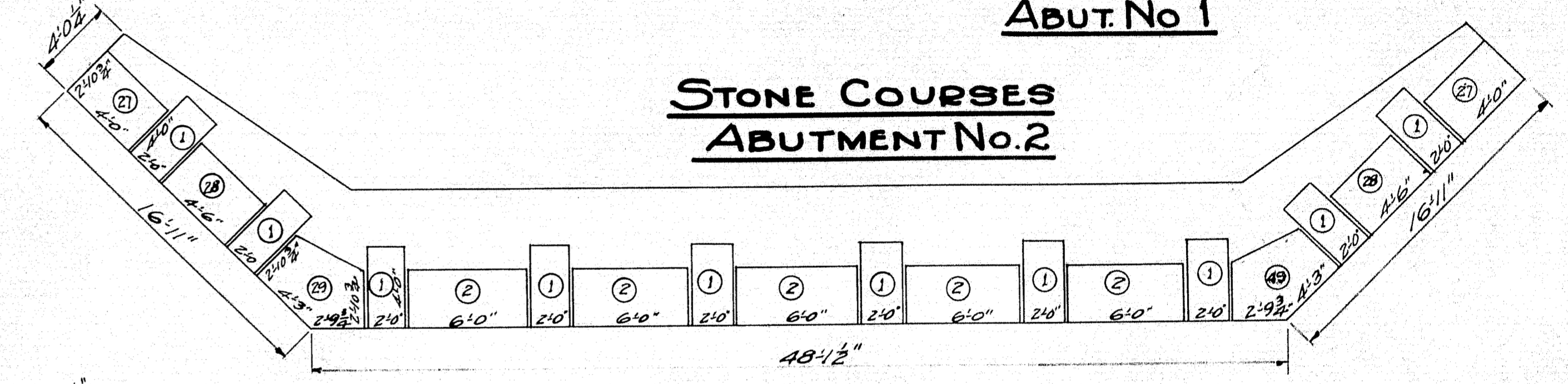
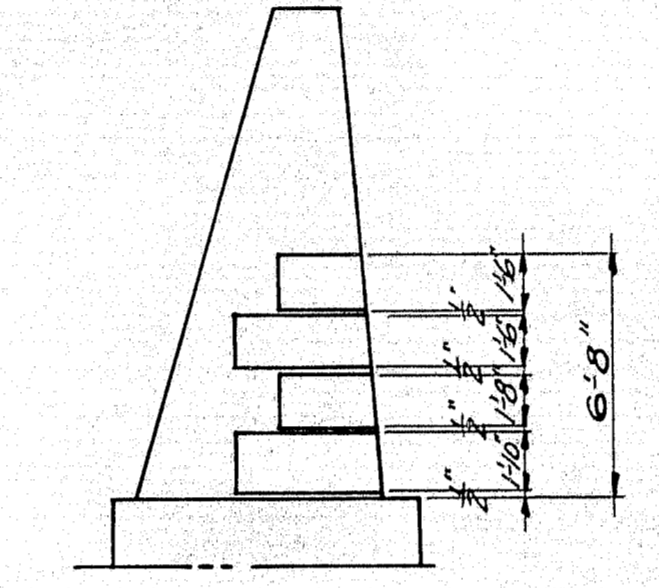
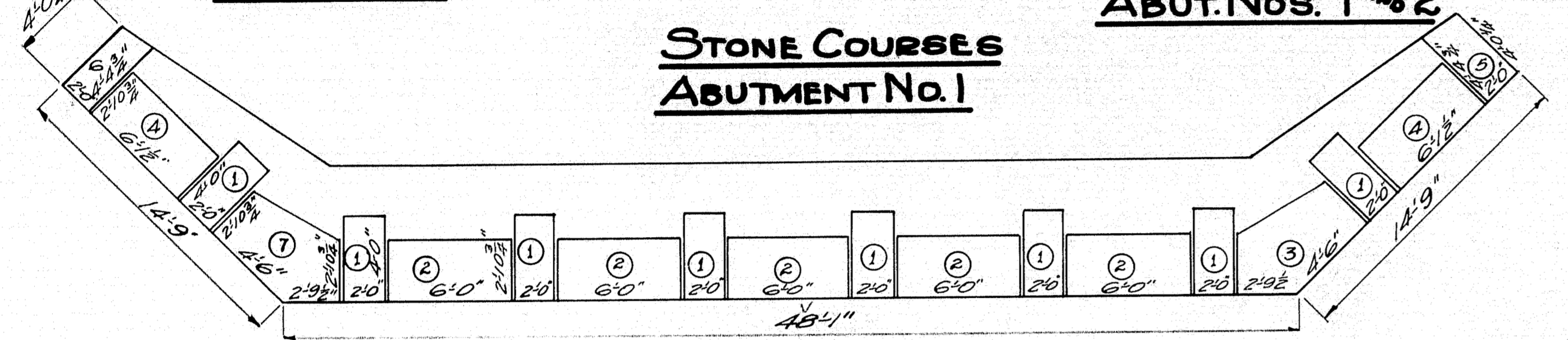
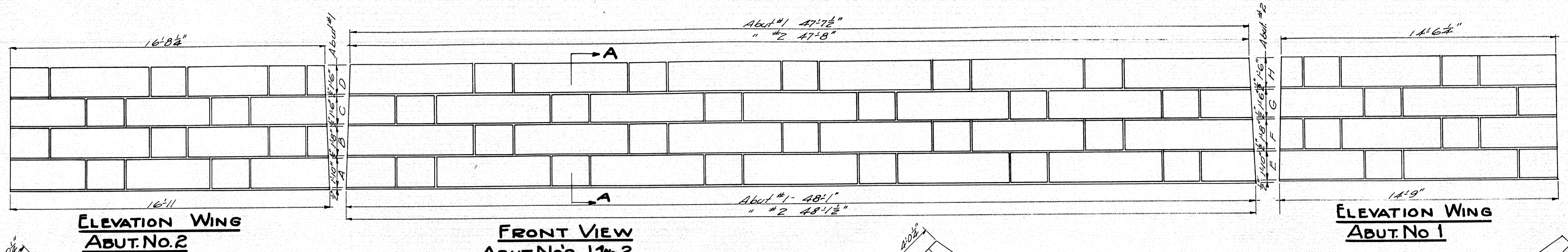
All steel to be plain round bars of structural grade.  
All dimensions are to centers of bars.

MAINE HIGHWAY COMMISSION  
BRIDGE DIVISION  
BUFFAM BRIDGE  
OVER  
WEBHANET RIVER  
IN THE TOWN OF  
WELLS, YORK COUNTY  
SUPERSTRUCTURE  
Sheet 3 of 3 Augusta, Me. Dec. 30, 1930

Design by G.A.B.  
V.H.H.S.

11-79



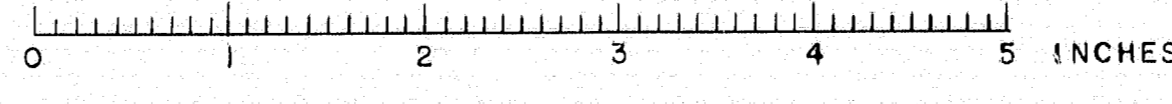


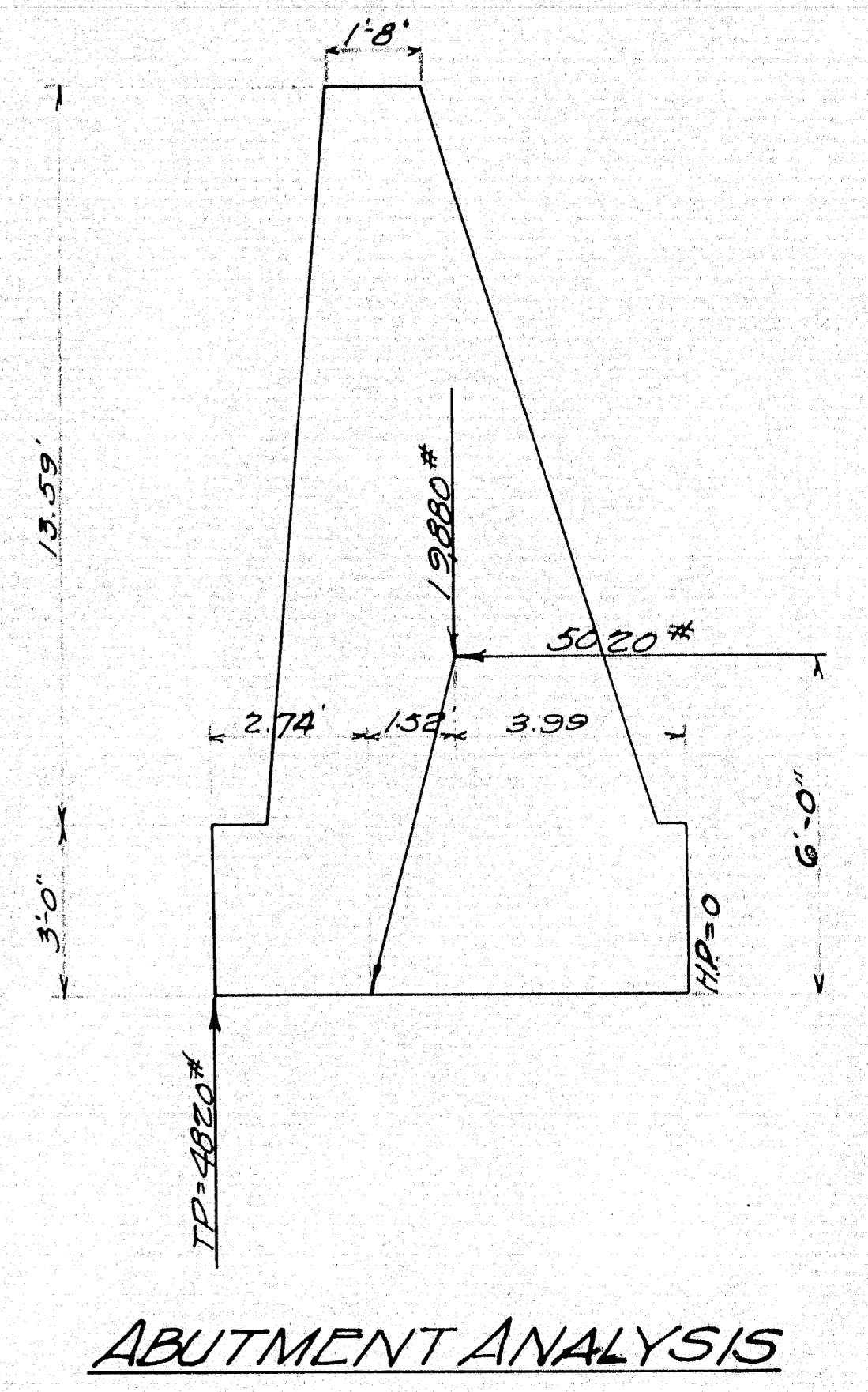
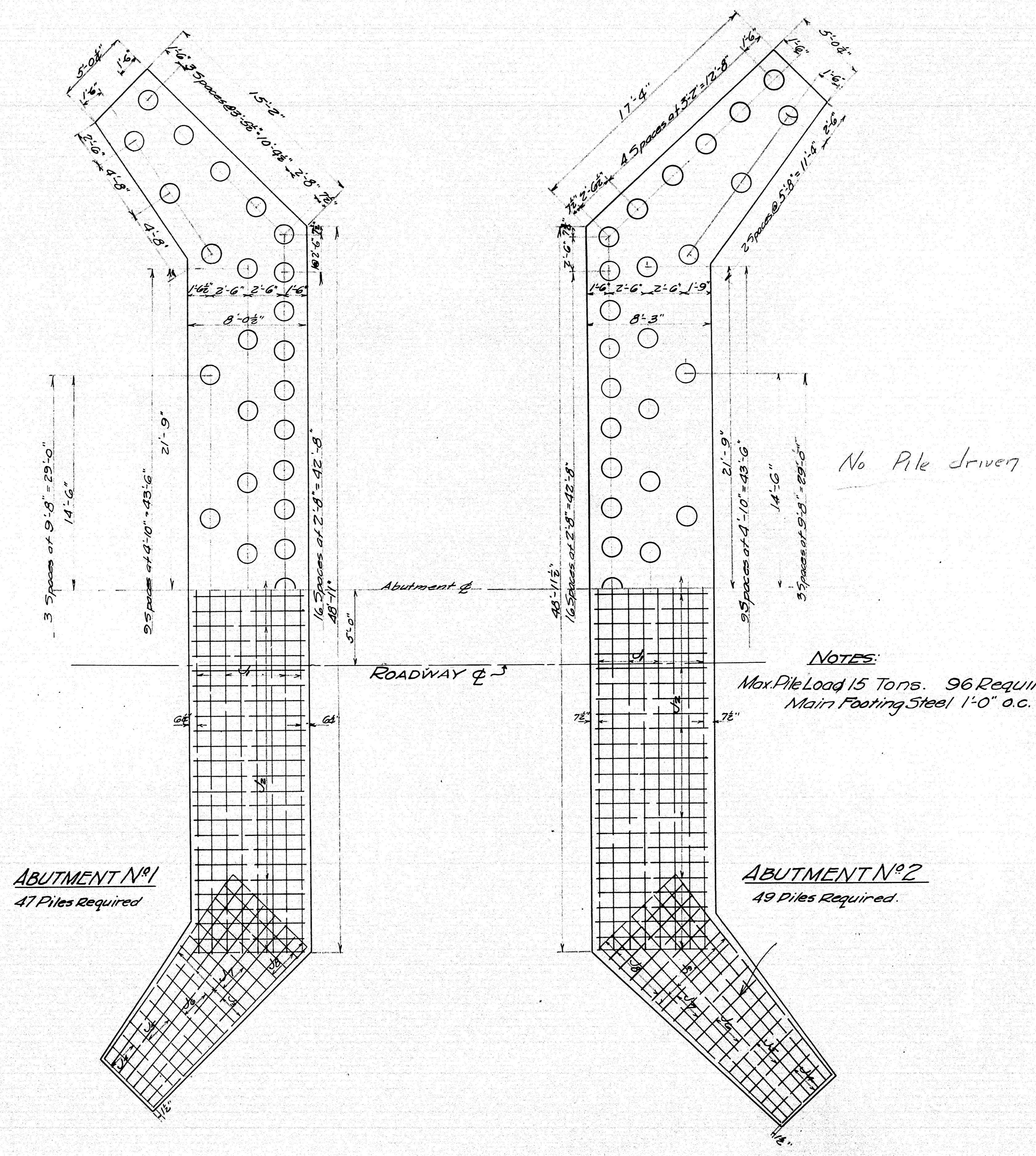
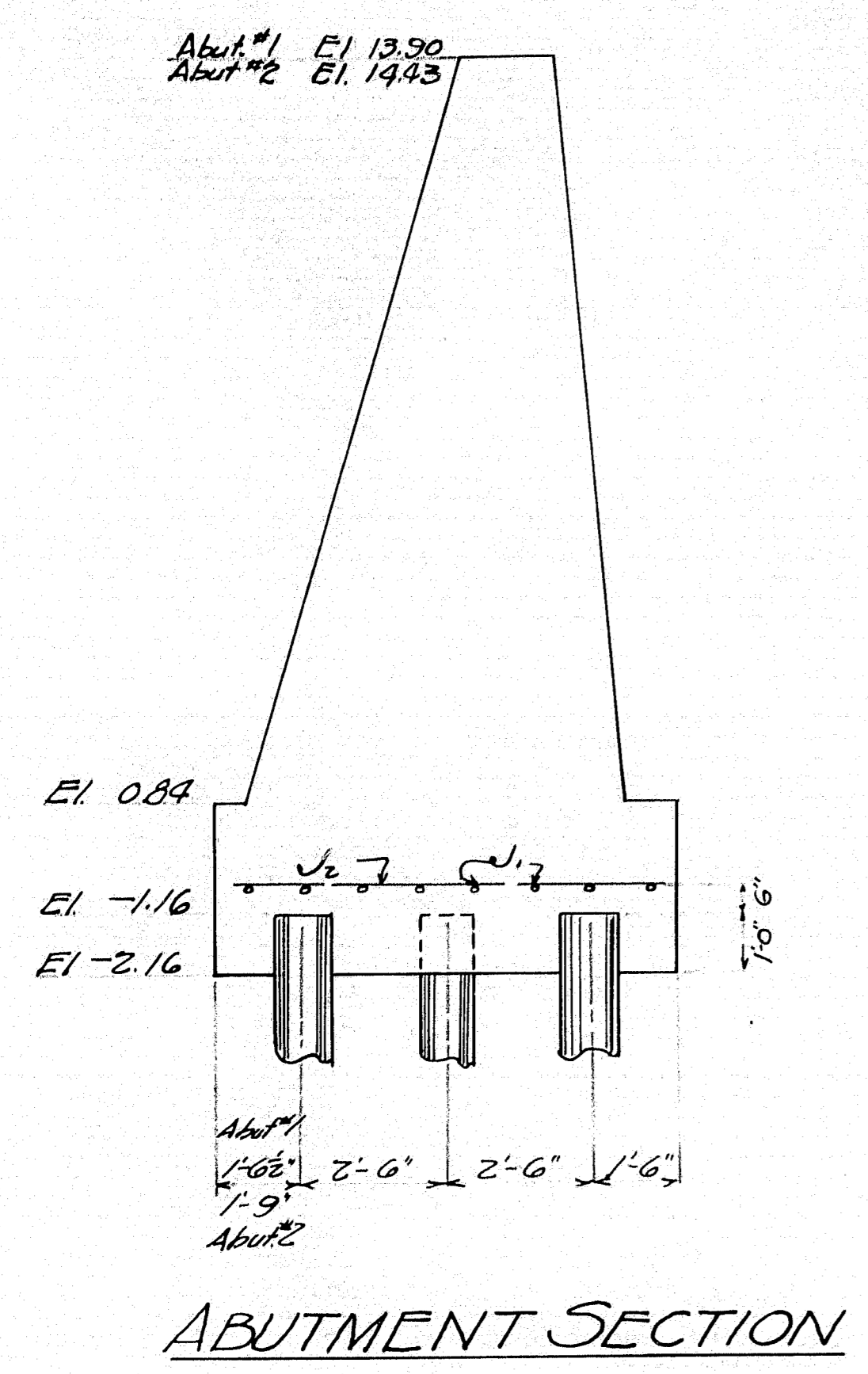
*Note: All dimensions on stone shown are given at the bottom of course. All stones to be battered 1" per ft. on the face, 5" batter per foot on face, plumb on end and 3" batter per foot on back in case the stone runs from face to back of wing.*

Plan Mills  
V. Clark

Maine Highway Commission  
Bridge Division  
**BUFFAM BRIDGE**  
over  
**WEBHANET RIVER**  
In the Town of  
**WELLS York Co**  
STONE PLAN  
Sheet Augusta Me. Feb. 25, 1931

11-80





NOTES:  
 Max. Pile Load 15 Tons. 96 Required  
 Main Footing Steel 1'-0" o.c.

STEEL SCHEDULE				
Mark	Size	No. Req'd	Length	Location
J <sub>1</sub>	3/4" φ	16	48'-11"	Footing
J <sub>2</sub>	"	100	7'-9"	"
J <sub>3</sub>	"	16	14'-9"	"
J <sub>4</sub>	"	12	4'-9"	"
J <sub>5</sub>	"	12	5'-4"	"
J <sub>6</sub>	"	12	5'-11"	"
J <sub>7</sub>	"	12	6'-7"	"
J <sub>8</sub>	"	20	7'-2"	"
J <sub>9</sub>	"	16	17'-0"	"

MAINE HIGHWAY COMMISSION  
 BRIDGE DIVISION  
**BUFFAM BRIDGE**  
 OVER  
**WEBHANET RIVER**  
 IN THE TOWN OF  
**WELLS, YORK CO.**  
 PILE DETAILS  
 SHEET 4 OF 4 AUGUSTA, MAINE, JAN. 2 1931.

Lincoln  
 Hamilton

