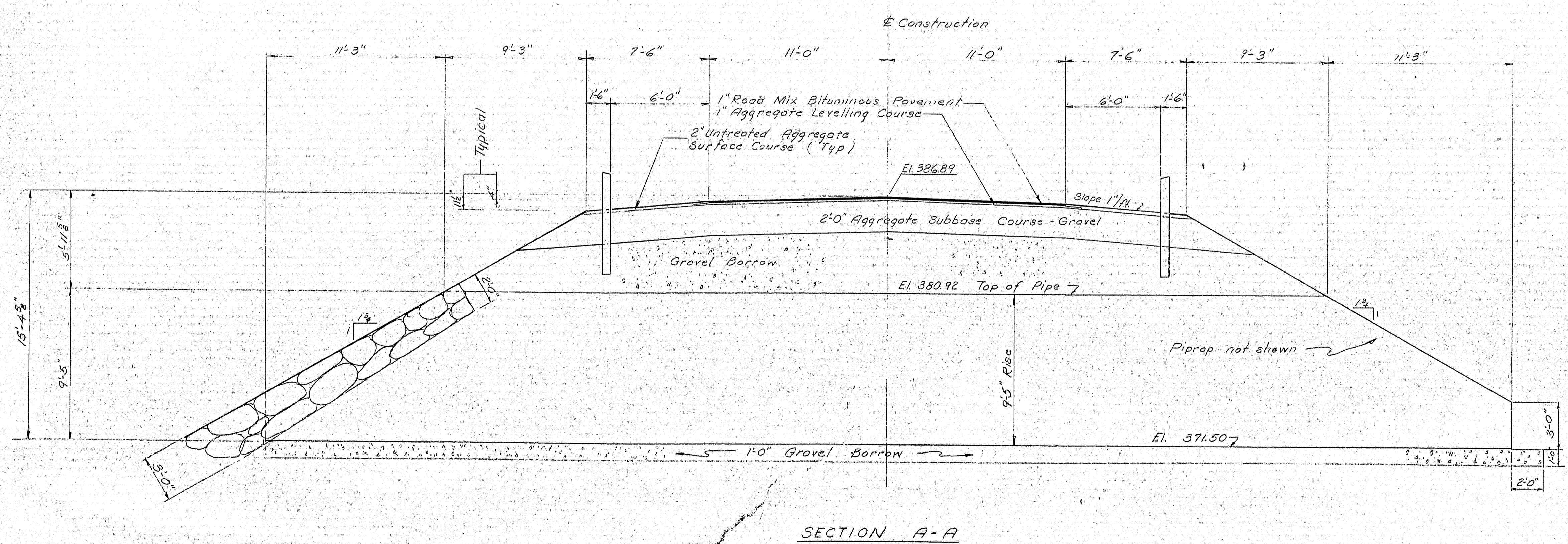
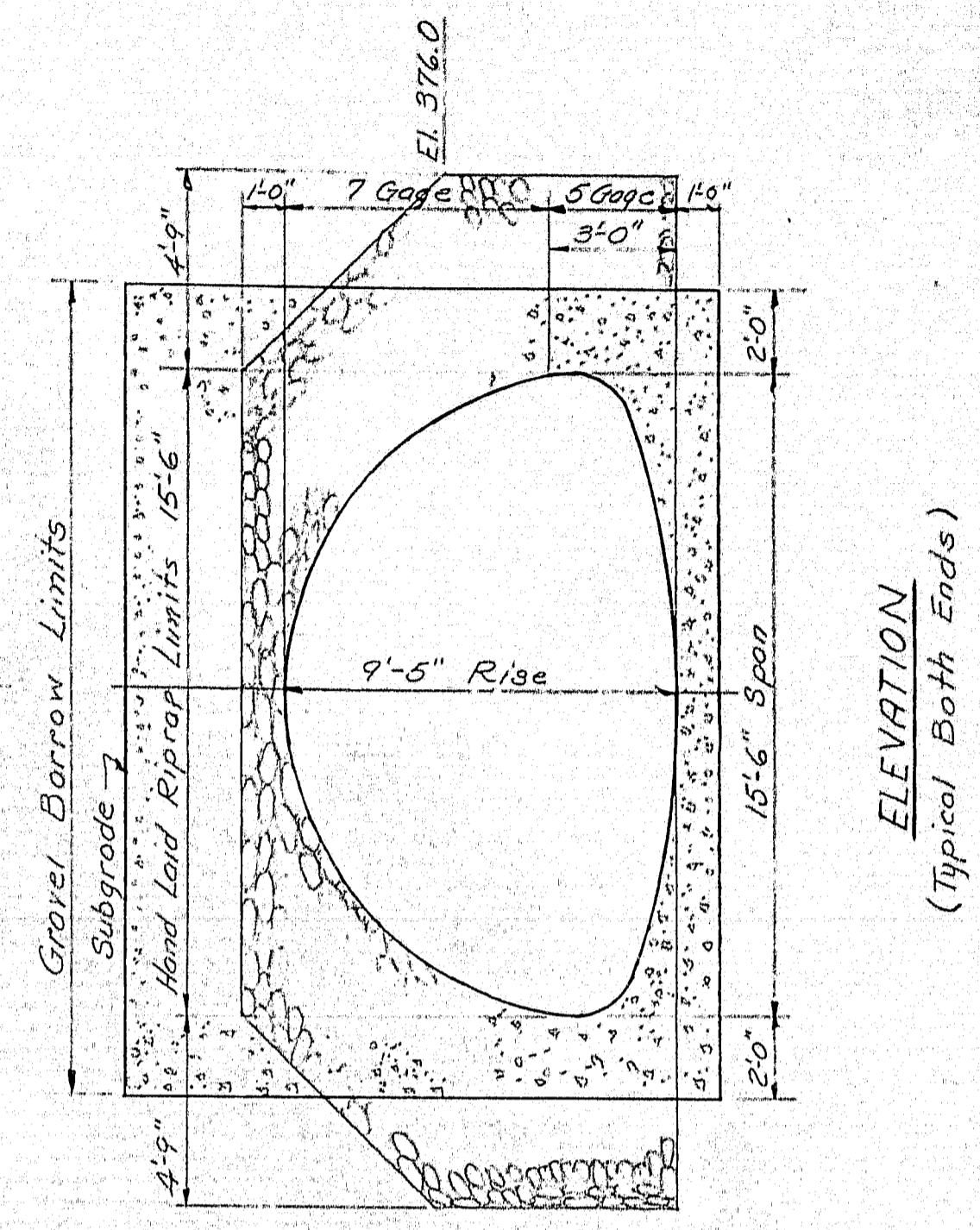
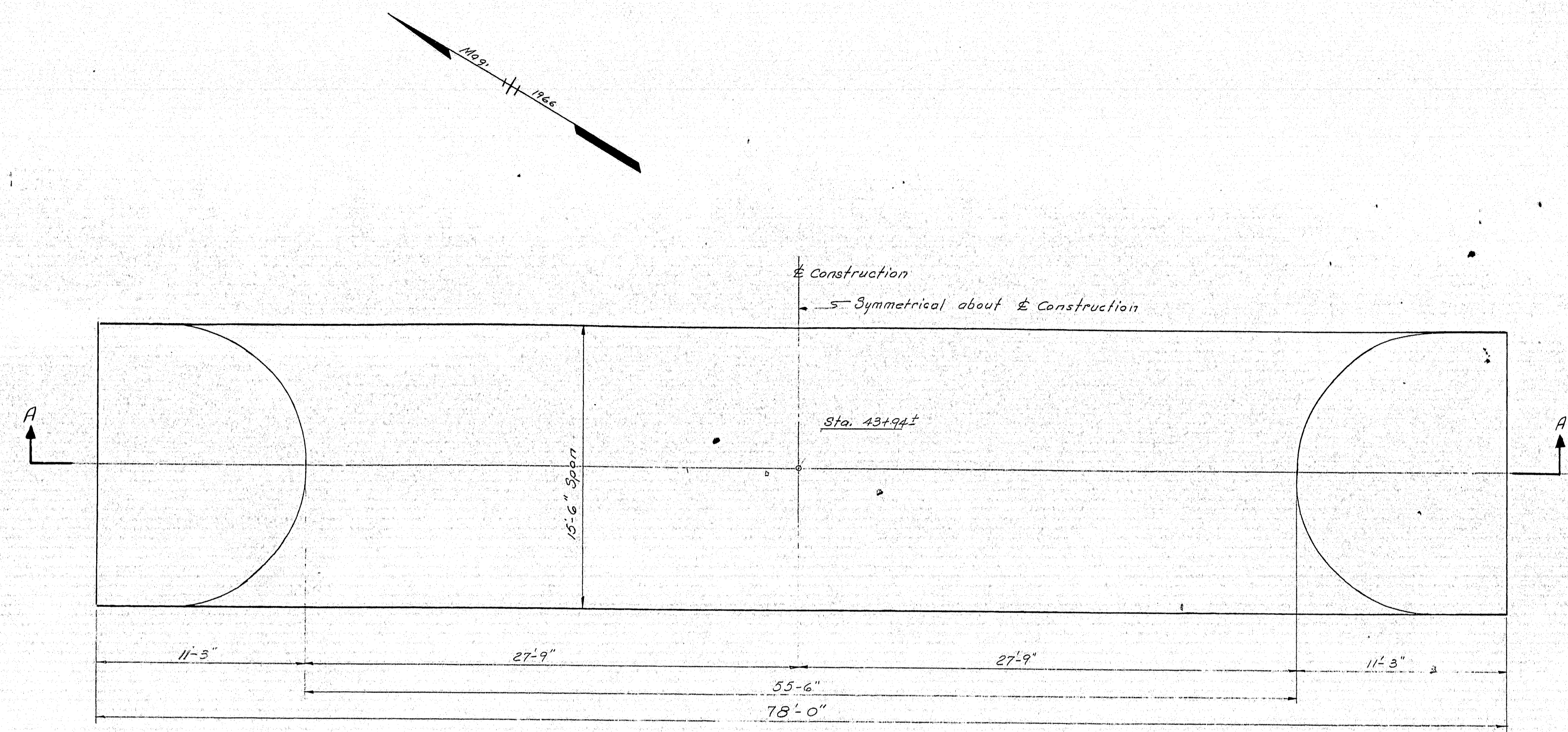


B. P. R. REG. NO.	STATE	PROJECT NUMBER	SHEET NO.	TOTAL SHEETS
1	MAINE	SH 780		



**LIVE LOADING**  
H20 - 44

**DESIGN SPECIFICATIONS**  
A.A.S.H.O. - Standard specification for Highway Bridges, 1965

**CONTRACT SPECIFICATIONS**  
State of Maine, State Highway Commission, Standard Specifications, Highways and Bridges, Revision of June 1965.

**REQUIRED**  
One Structural Plate Pipe Arch, Span 15'-6", Rise 9'-5". Gage as noted.

DESIGN TRACE - J. DeWitt G. G. T.	BRIDGE NO. SURVEY - PLOT -
CHECK - J. R. Donahy	
STATE HIGHWAY COMMISSION BRIDGE DIVISION	
<b>SALMON STREAM BRIDGE</b>	
IN THE TOWN OF <b>PERHAM</b>	
<b>AROOSTOOK COUNTY</b>	
STRUCTURE	
SHEET / OF / AUGUSTA, MAINE July 1967	

M2692

