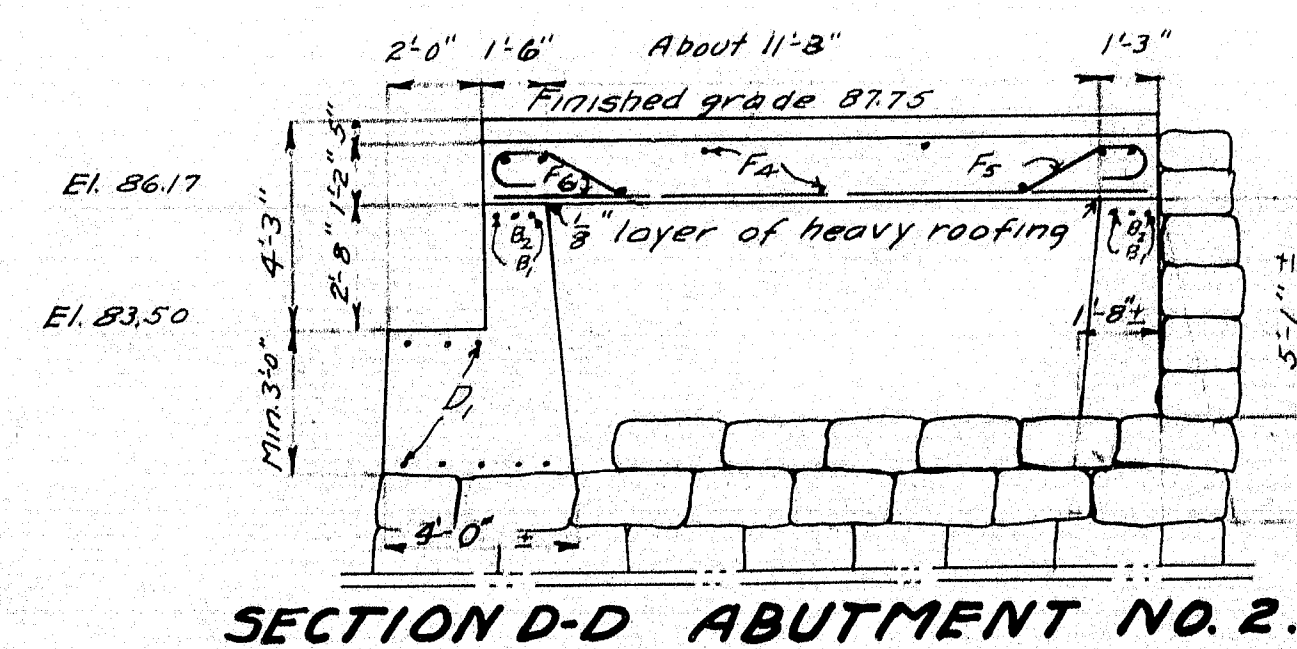
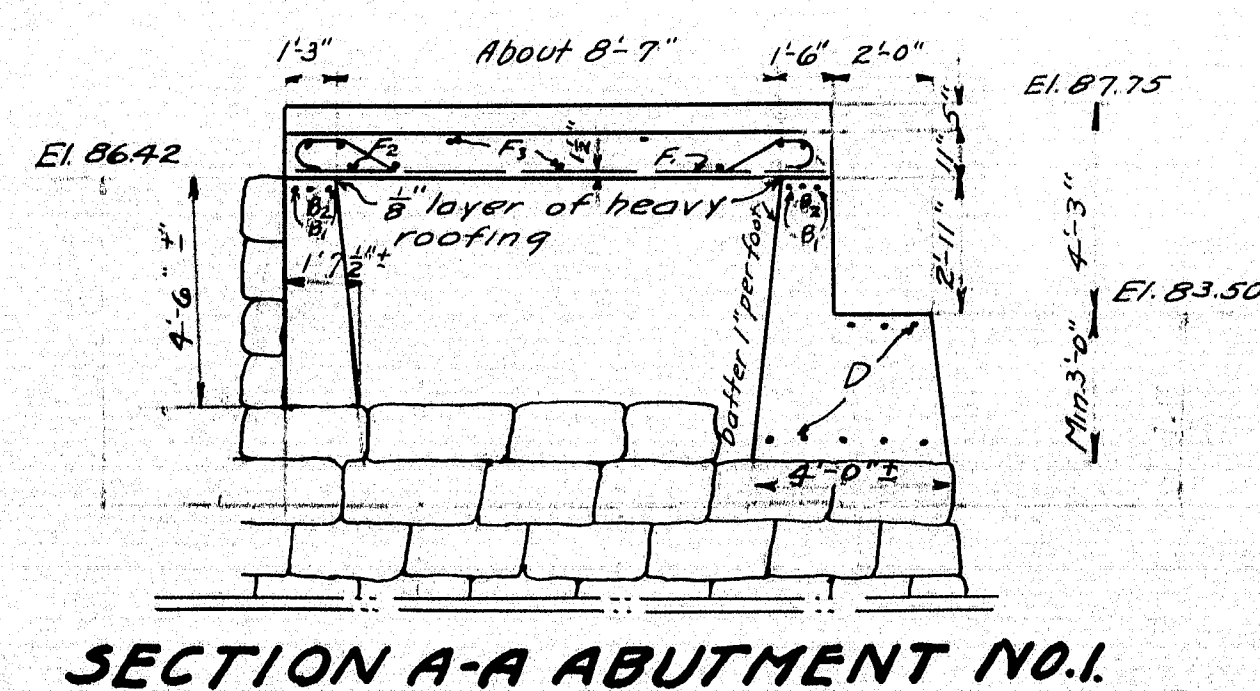
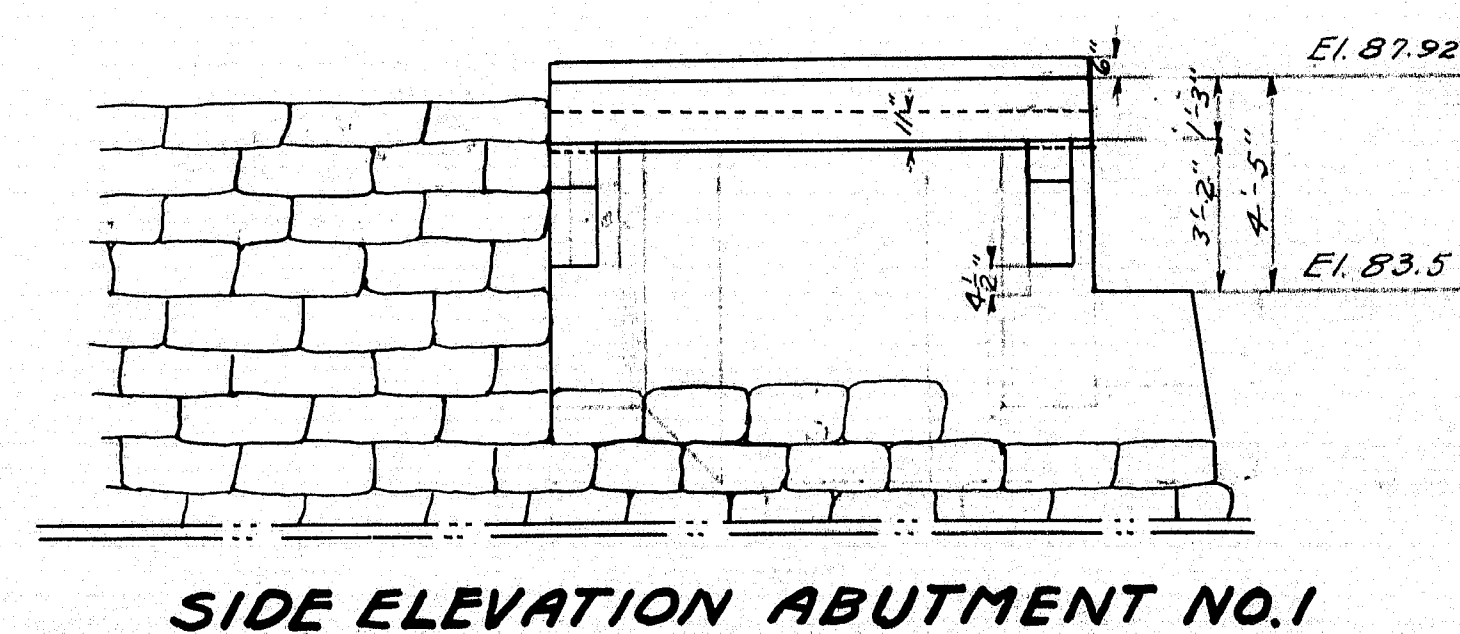
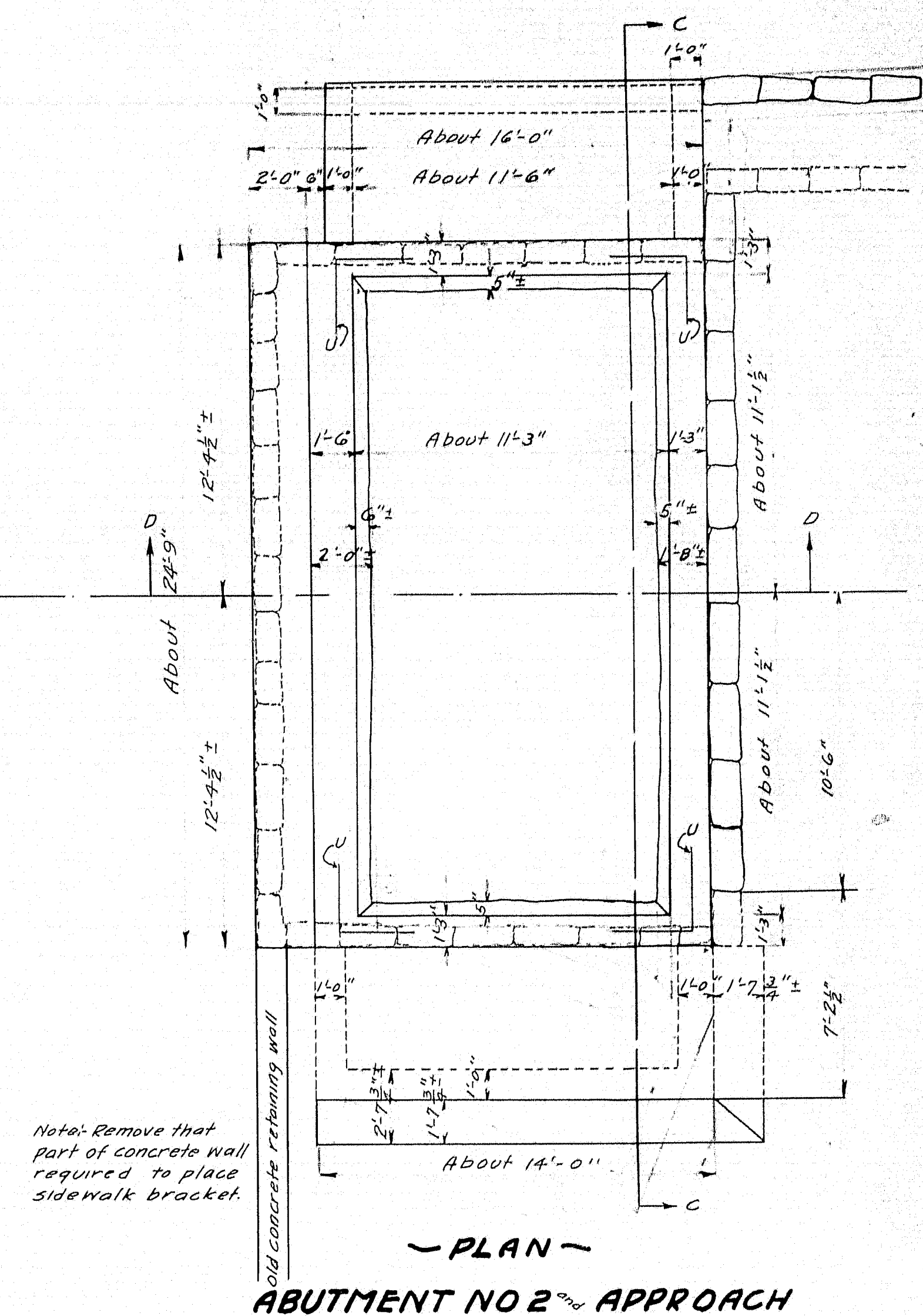
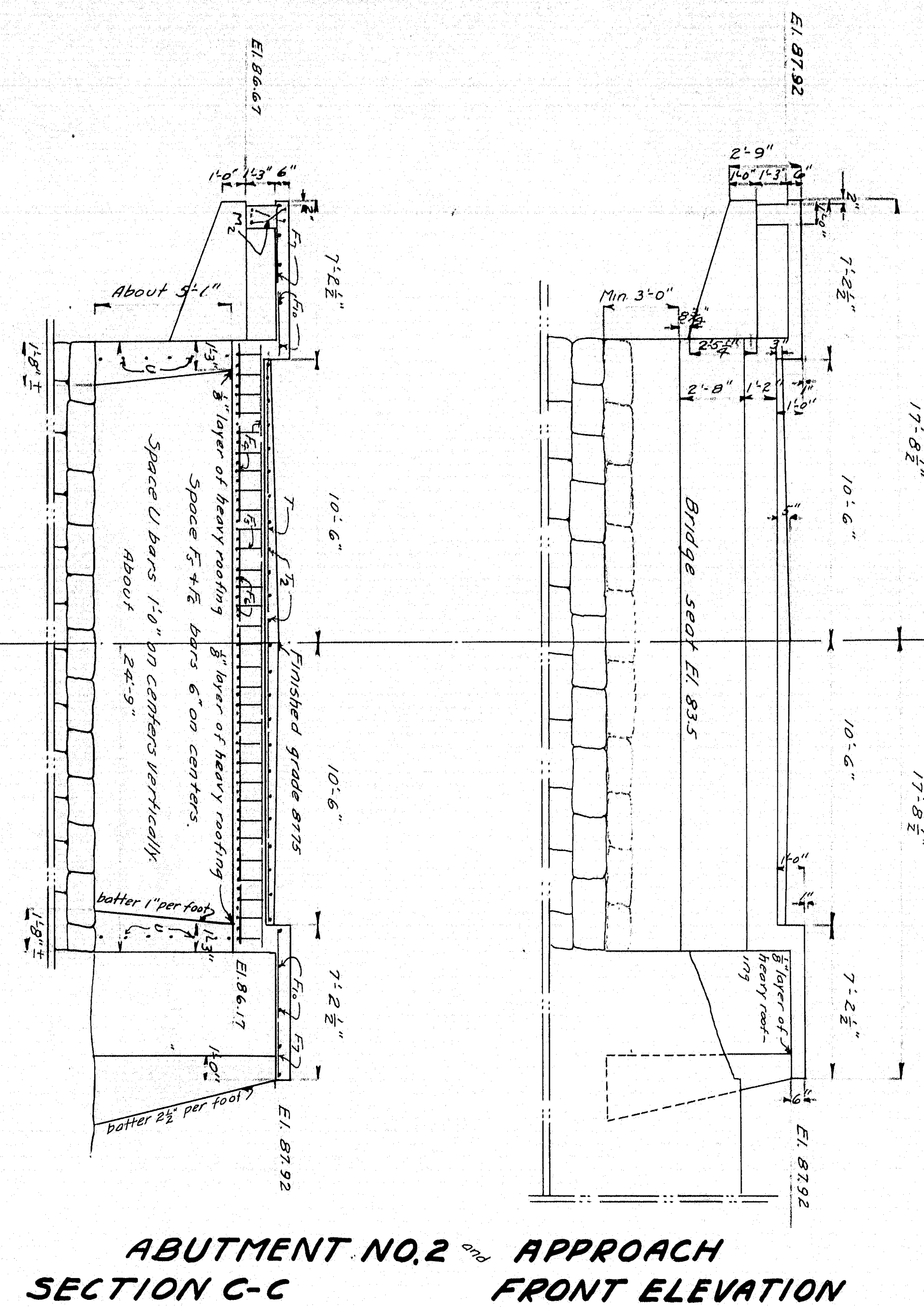
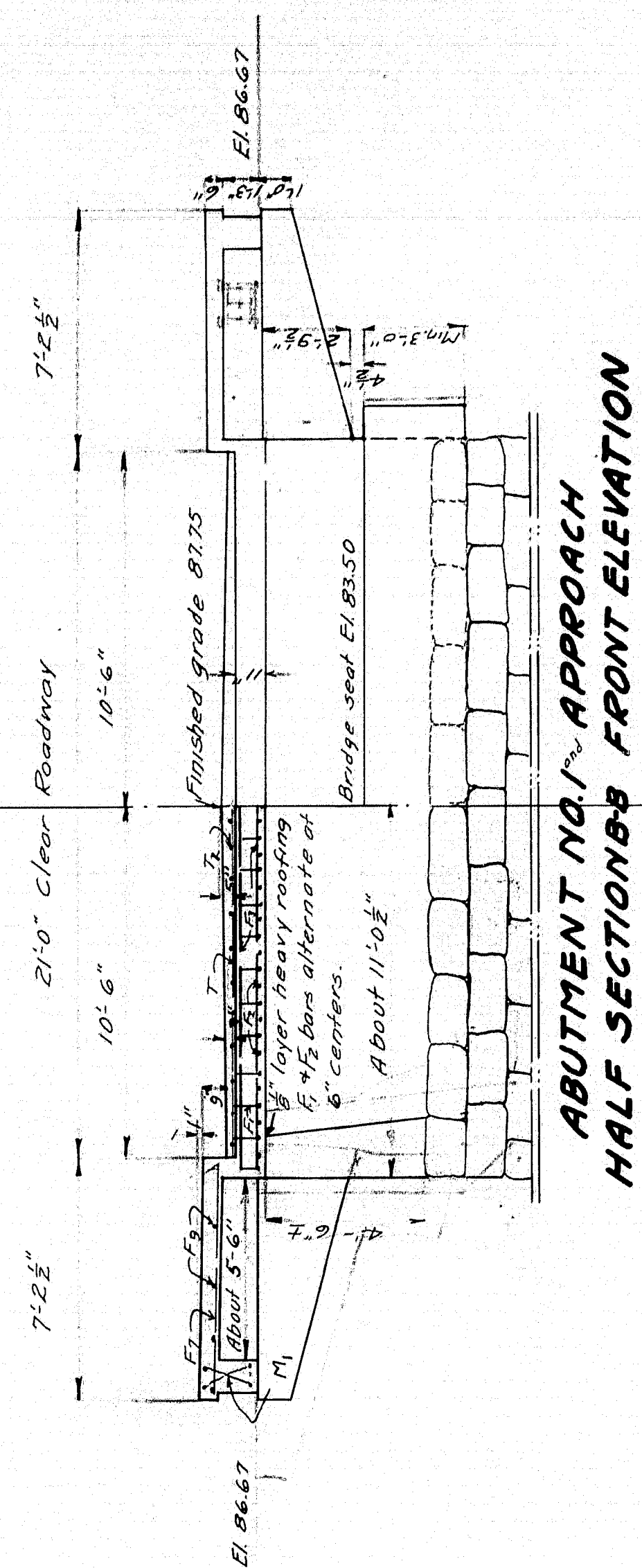
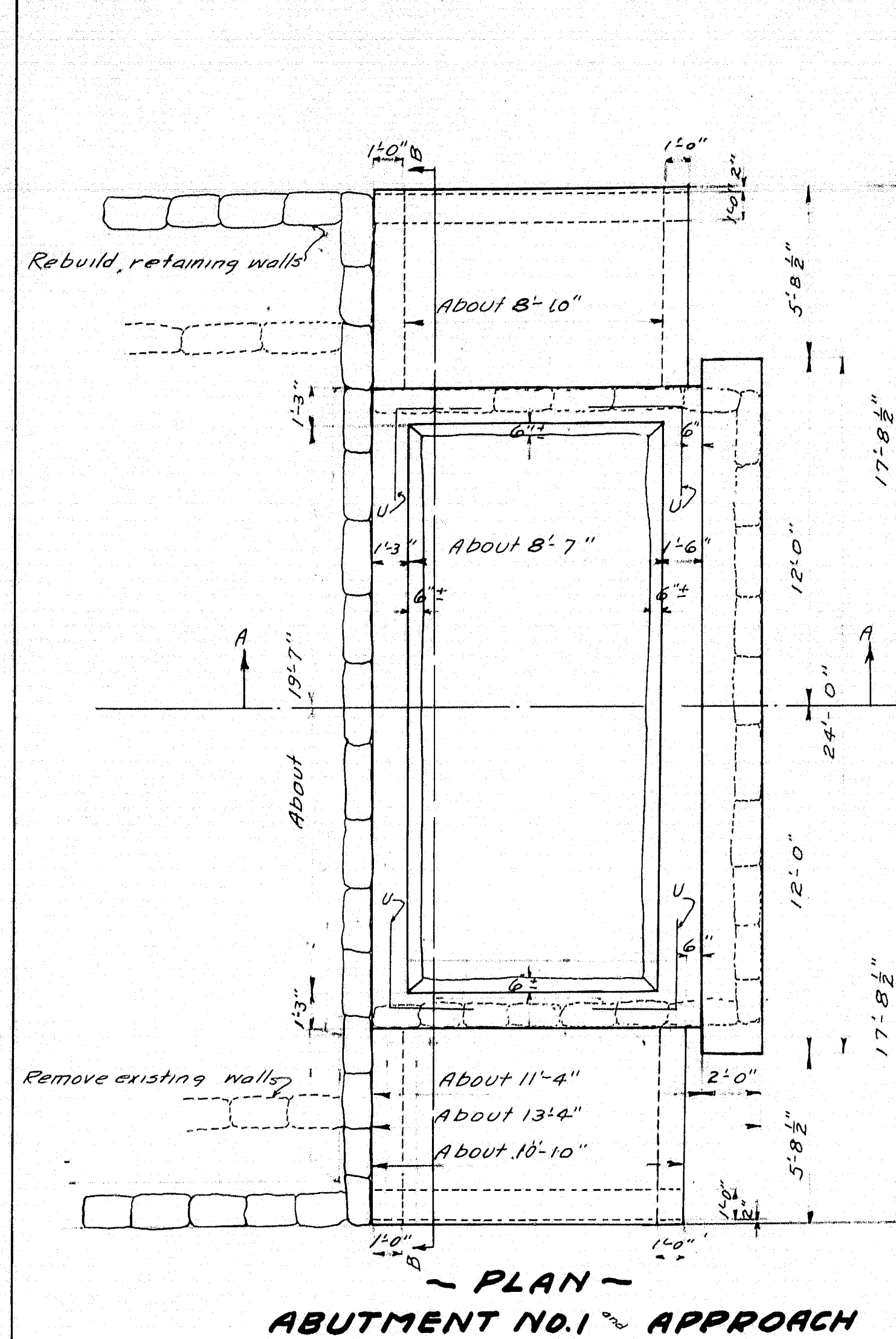
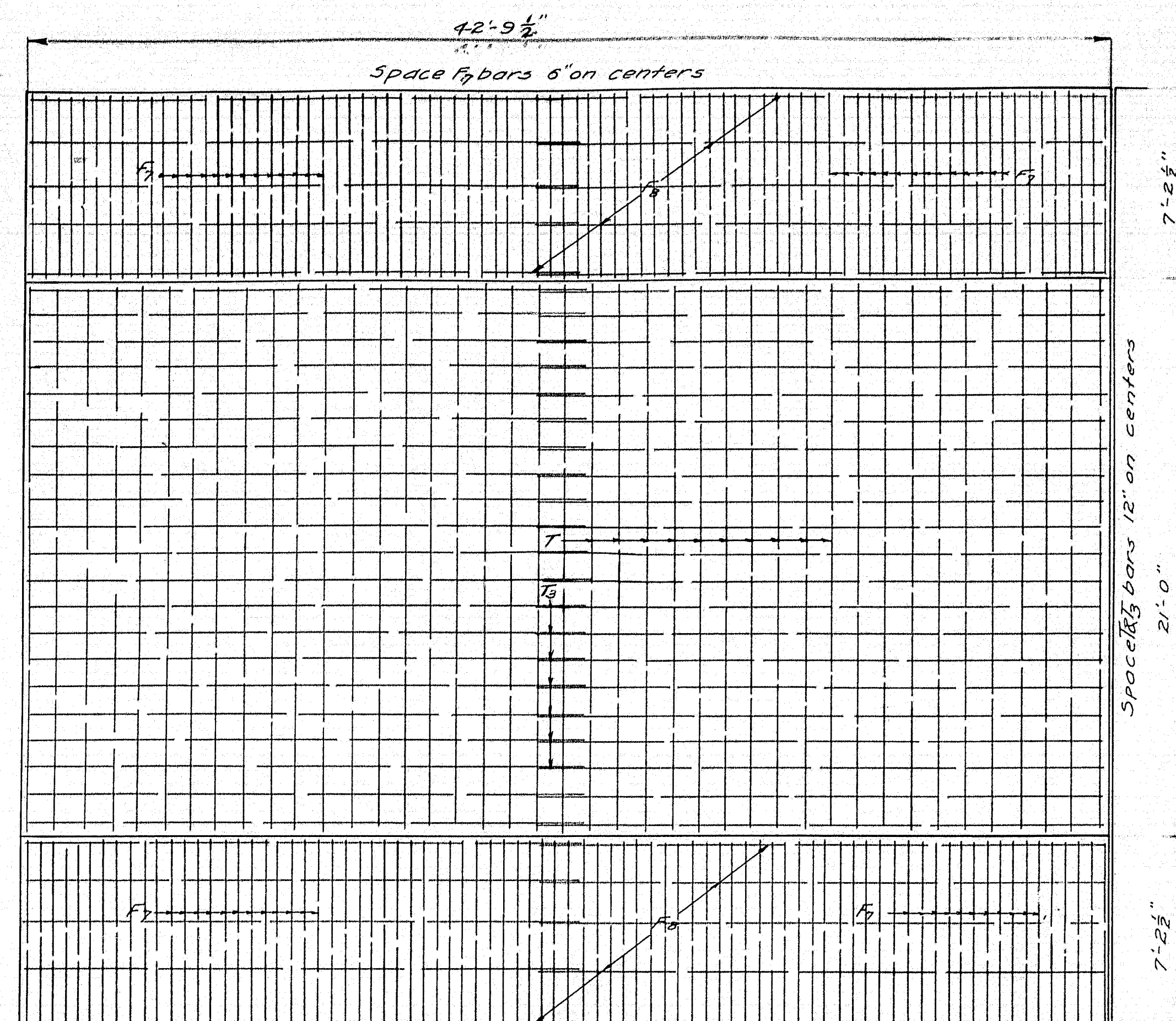


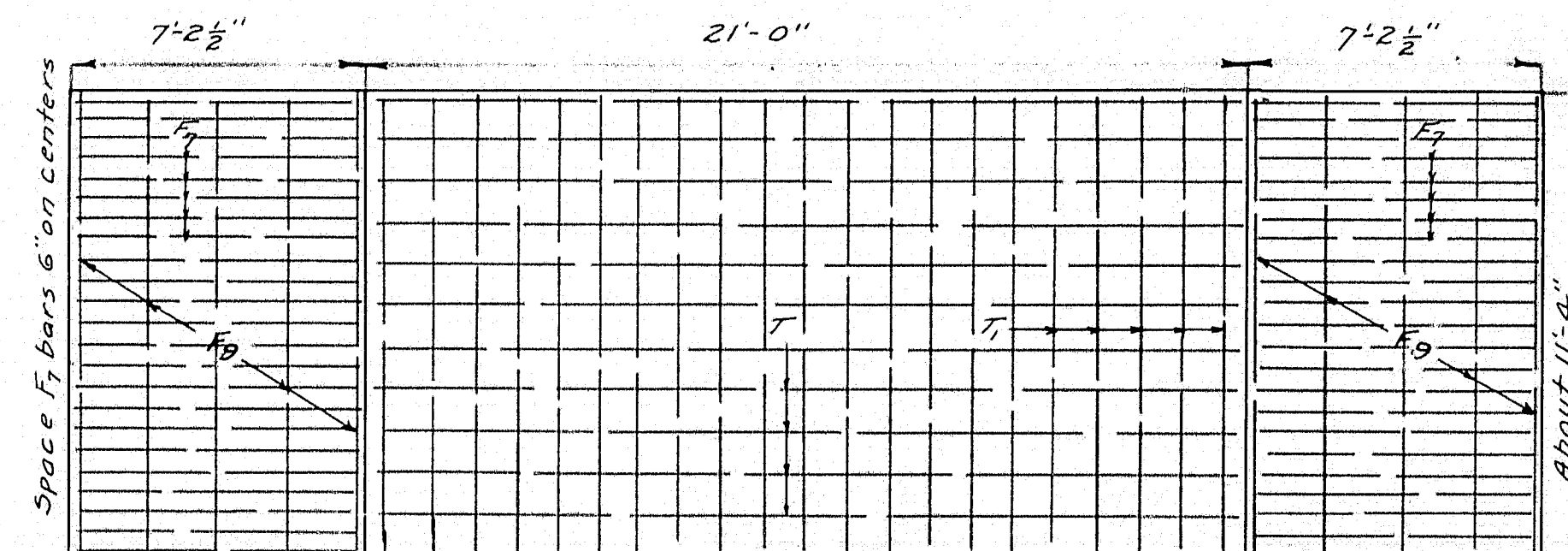
MAINE HIGHWAY COMM.
BRIDGE DIVISION
DOVER BRIDGE
OVER
- PISCATAQUIS RIVER -
IN THE TOWN OF
DOVER-FOXCROFT PISCATAQUIS CO.
SURVEY PLAN
SHEET 1 of 7 AUGUSTA, ME. JAN. 29, 1929



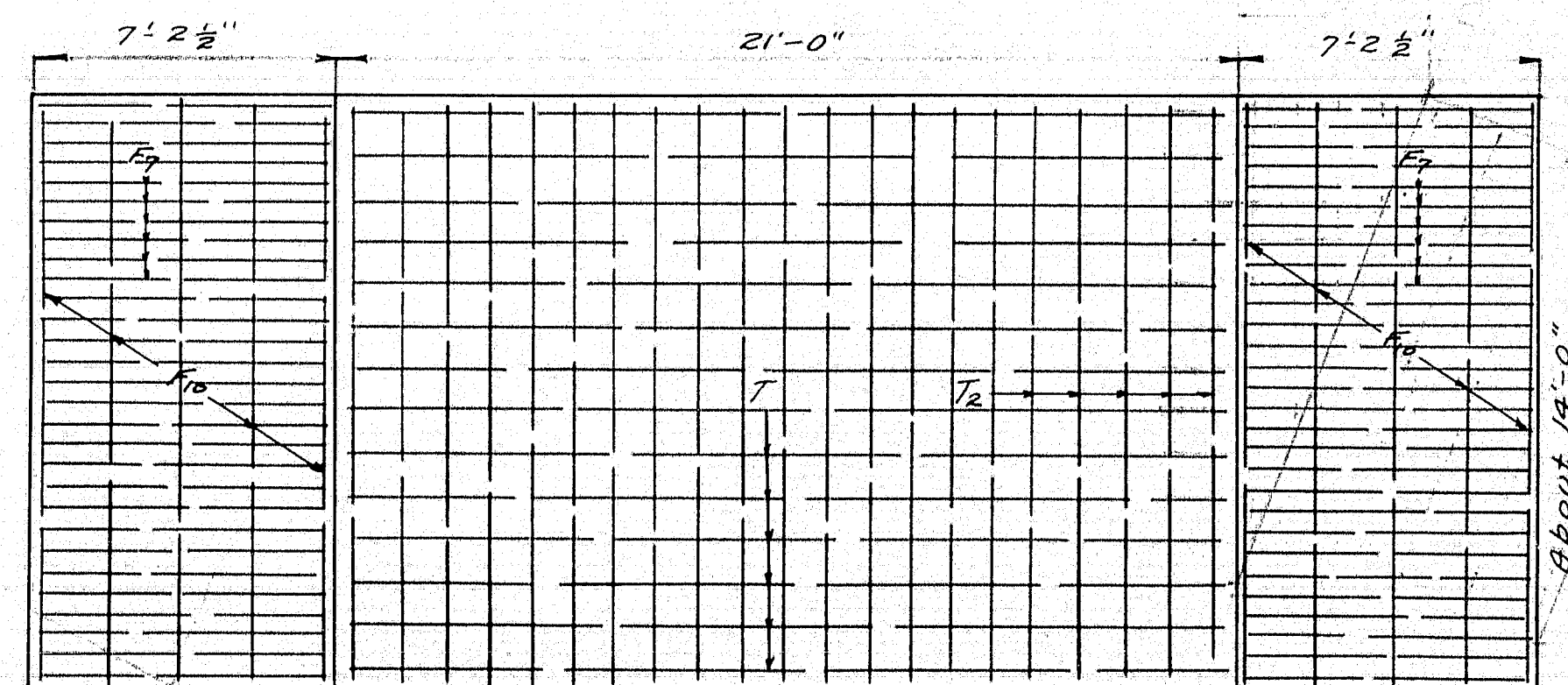
STATE HIGHWAY COMMISSION
BRIDGE DIVISION
DOVER BRIDGE
OVER
PISCATAQUIS RIVER
IN THE TOWN OF
DOVER - FOXCROFT
PISCATAQUIS COUNTY
ABUTMENTS AND APPROACHES.
SHEET 2 OF 7 AUGUSTA ME. FEB. 1930.



**STEEL LAYOUT
MAIN SPANS ~ SIDEWALK ~ CONCRETE SURFACE**



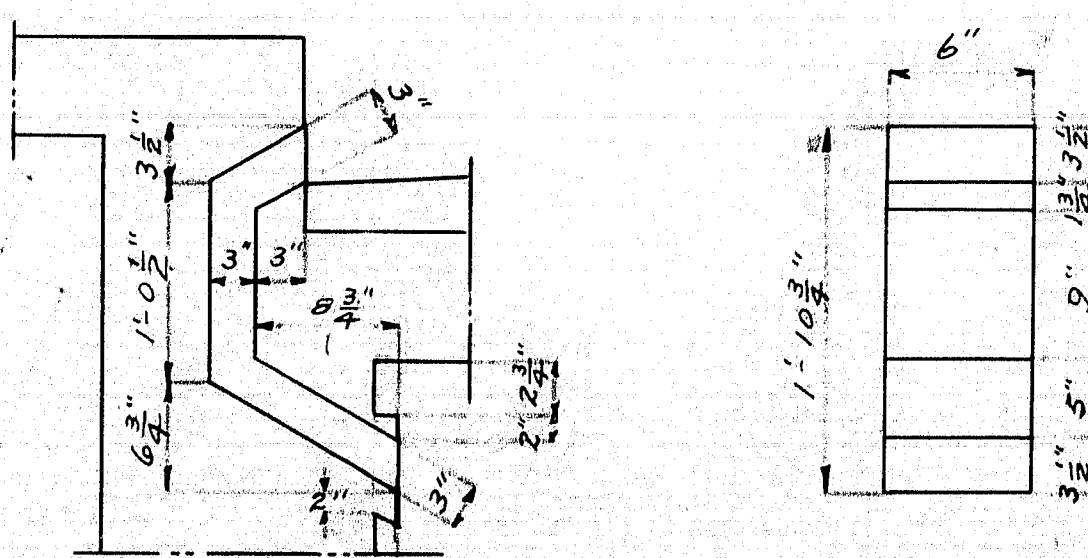
APPROACH SPAN NO.1 ~ SIDEWALK ~ CONCRETE SURFACE



APPROACH SPAN NO.2 ~ SIDEWALK ~ CONCRETE SURFACE

B. bars.

Mark	Size	No. Req'd	Total Length	Location
B	1" ϕ	108	14'-3 1/2"	Brackets.



**METAL DRAIN FORM
12 Required**

~ STEEL SCHEDULE ~

Mark	Size	No. Required	Total Length	Location
F ₁	3" ϕ	23	13' 0 1/4"	Slab, approach span No. 1
F ₂	3" ϕ	26	15' 9 3/4"	" " " " No. 2

Mark	Size	No. Required	A	B	C	D	Total Length	Location
G ₂	1" ϕ	24	35'-3 1/2"	3'-4"	2'-11 1/2"	4'-5 1/2"	46'-9 1/2"	Interior girder
G ₃	1" ϕ	24	28'-7 1/2"	3'-1"	2'-8 1/2"	4'-1 1/2"	39'-4 1/2"	" "
G ₄	1" ϕ	24	22'-5 1/2"	3'-1"	2'-8 1/2"	4'-1 1/2"	33'-2 1/2"	" "
G ₆	1 1/2" ϕ	24	35'-3 1/2"	3'-4"	2'-11 1/2"	4'-5 1/2"	46'-9 1/2"	Exterior "
G ₇	1 1/2" ϕ	24	28'-7 1/2"	3'-1"	2'-8 1/2"	4'-1 1/2"	39'-4 1/2"	" "
G ₈	1 1/2" ϕ	24	22'-5 1/2"	3'-1"	2'-8 1/2"	4'-1 1/2"	33'-2 1/2"	" "

F₁₁ - 3/8" ϕ , 240 Required, 25'-10 1/2" long. Located in slab.

Mark	Size	No. Req'd	A	Length	Location
S ₁	5/8" ϕ	54	10 1/2"	3'-6 1/2"	Sidewalk Brackets
S ₂	5/8" ϕ	54	1'-0 1/2"	3'-10 1/2"	" "
S ₃	5/8" ϕ	54	1'-1 1/2"	4'-1"	" "
S ₄	5/8" ϕ	54	1'-3"	4'-4"	" "
S ₅	5/8" ϕ	54	1'-4 1/2"	4'-7 1/2"	" "
S ₆	5/8" ϕ	54	1'-6 1/2"	4'-10 1/2"	" "
S ₇	5/8" ϕ	54	1'-7 1/2"	5'-1 1/2"	" "
S ₈	5/8" ϕ	54	1'-10 1/2"	5'-6 1/2"	" "
S ₉	5/8" ϕ	54	2'-0 1/2"	5'-11 1/2"	" "
S ₁₀	5/8" ϕ	54	2'-3"	6'-4"	" "

Mark	Size	No. Required	Total Length	Location
S ₁	5/8" ϕ	624	12'-8"	Exterior girders
S ₂	5/8" ϕ	624	9'-3 1/2"	Interior "
S ₃	5/8" ϕ	338	5'-4 1/2"	Facid "
U	3/4" ϕ	26	6'-0"	Approach span walls

STRAIGHT BARS.

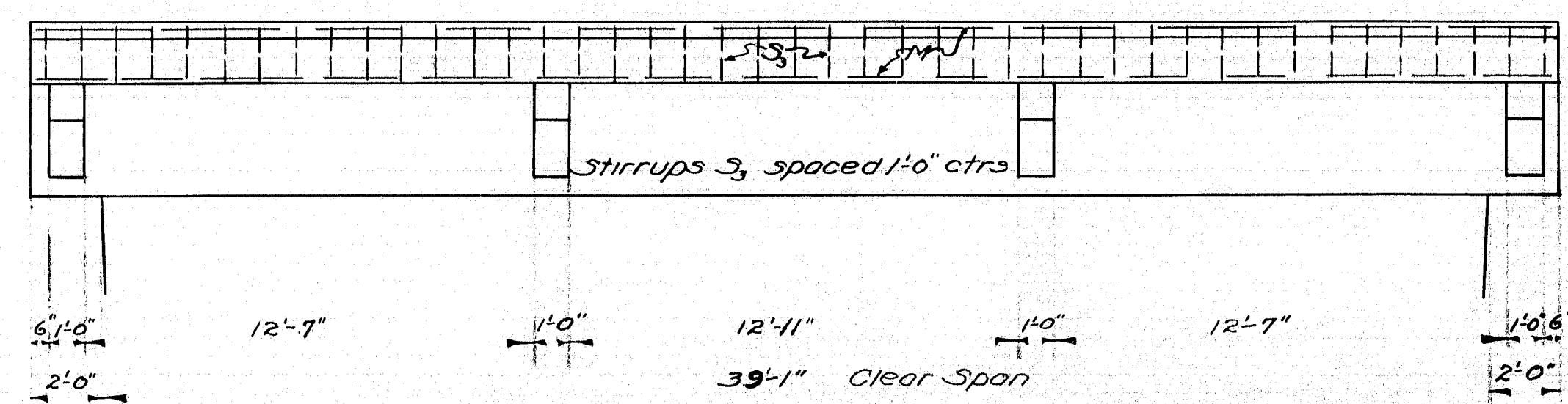
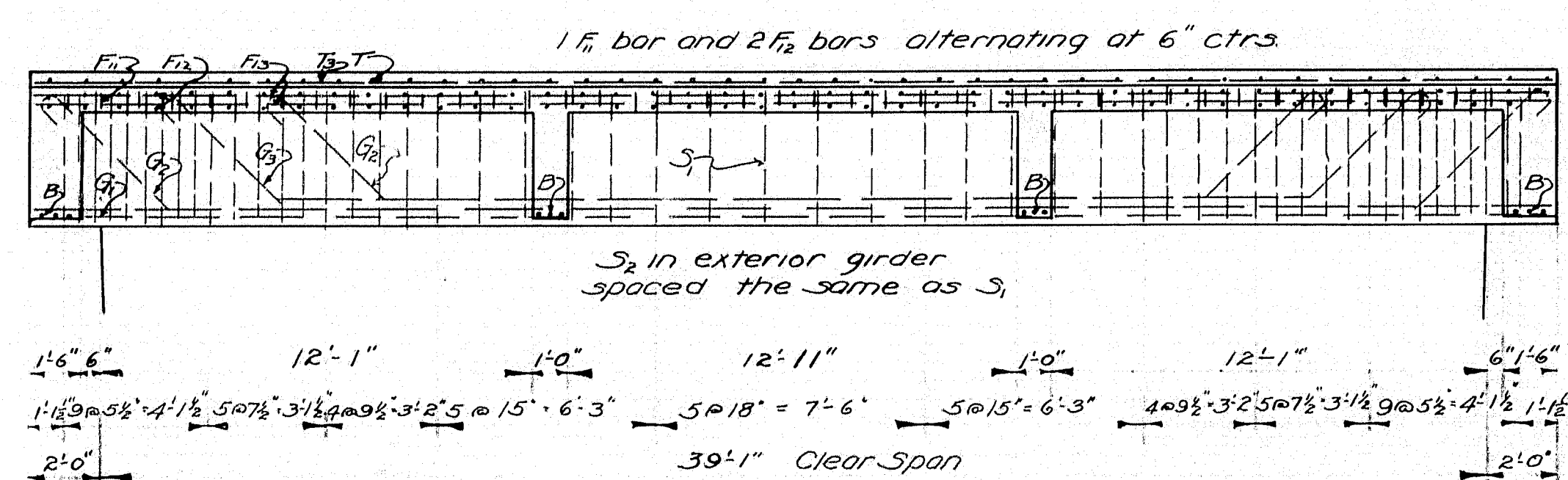
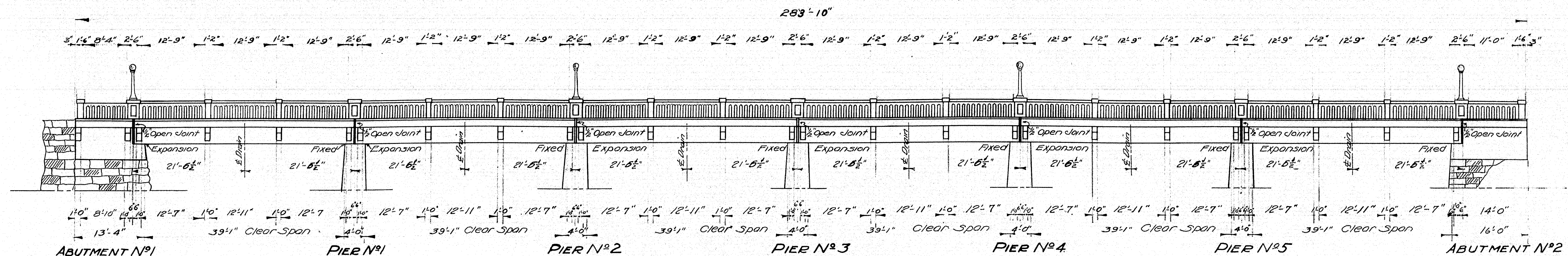
Mark	Size	No. Req'd	Total Length	Location
F ₂	3" ϕ	22	10'-10"	Slab, approach span No. 1
F ₃	3" ϕ	9	21'-9"	" " " " " "
F ₄	3" ϕ	9	24'-4"	" " " " " "
F ₅	3" ϕ	30	13'-6"	" " " " " "
F ₆	3" ϕ	1132	7'-0"	Sidewalk
F ₇	3" ϕ	168	21'-3 1/2"	" " " " " "
F ₈	3" ϕ	10	11'-0"	" " " " " "
F ₉	3" ϕ	10	13'-9"	" " " " " "
F ₁₀	3" ϕ	480	22'-8"	Slabs, main spans
F ₁₁	3" ϕ	18	42'-5 1/2"	" " " " " "
T	3" ϕ	283	20'-10"	Wearing surface
T ₁	3" ϕ	21	11'-0"	" " " " " "
T ₂	3" ϕ	21	13'-9"	" " " " " "
D	3" ϕ	8	23'-7"	Bridge seat cap. Abut No. 1
D ₁	3" ϕ	8	24'-4"	" " " " " "
M	3" ϕ	48	42'-8"	Face girder, main spans
M ₁	3" ϕ	8	10'-4"	" " " " " "
M ₂	3" ϕ	4	13'-2"	" " " " " "
M ₃	3" ϕ	252	21'-11"	Wearing surface, main spans
B	1" ϕ	72	22'-9"	Cross beams
B ₂	1" ϕ	54	9'-5"	" (center " ")
B ₃	1" ϕ	108	7'-2"	" " " " " "
G ₁	1 1/2" ϕ	72	42'-5 1/2"	Interior girders
G ₅	1 1/2" ϕ	72	42'-5 1/2"	Exterior "
A	3" ϕ	516	11'-8"	Band steel, exterior girder
P	3" ϕ	168	4'-6"	Roll posts
P ₁	3" ϕ	36	3'-6"	2'-6" posts only
R	3" ϕ	546	4'-3"	Roll, approach span No. 1
R ₁	3" ϕ	6	8'-8"	Roll, main spans
R ₂	3" ϕ	108	13'-0"	Roll, approach span No. 2
C	3" ϕ	6	11'-4"	Light Post, davels
C	3" ϕ	36	15'-0"	" " " " " "

Mark	Size	No. Req'd	Total Length	Location
P ₂	3" ϕ	56	5'-0 1/2"	2'-6" Posts only

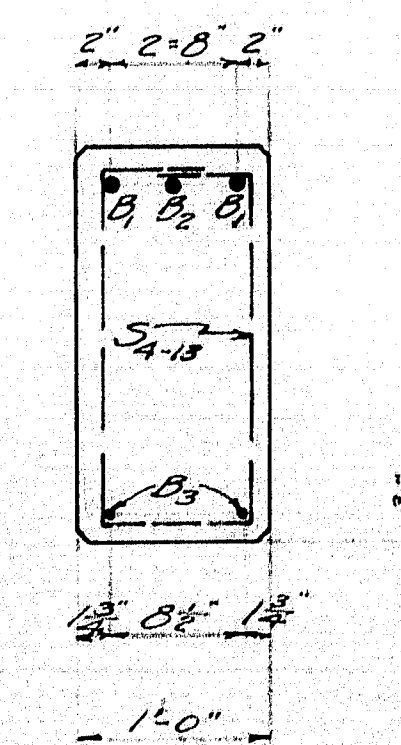
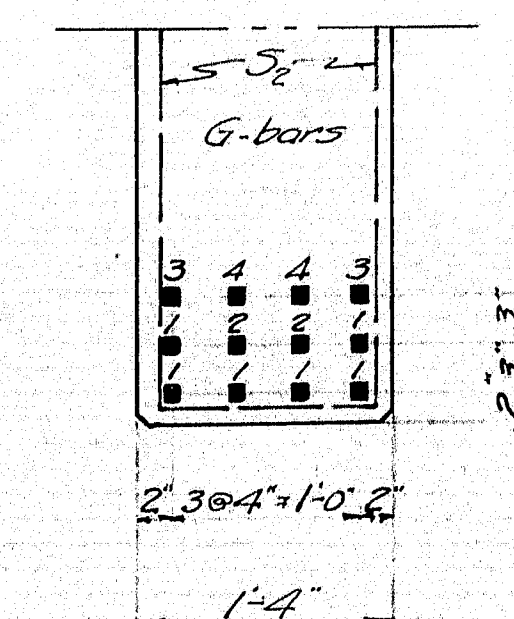
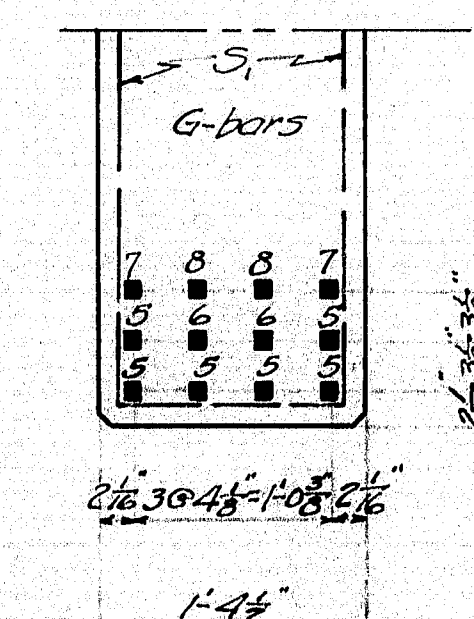
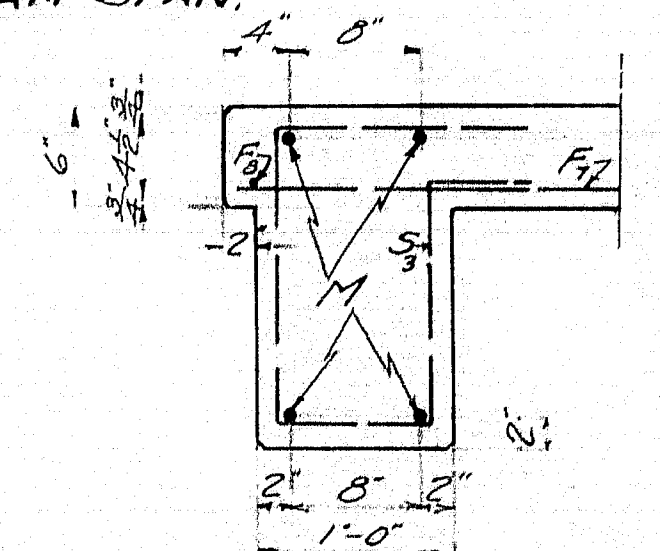
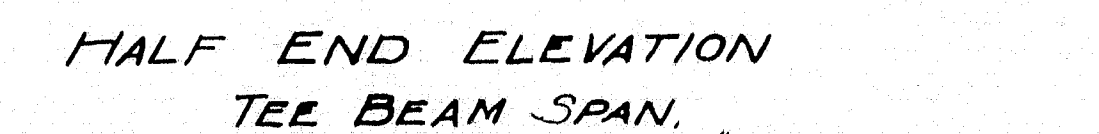
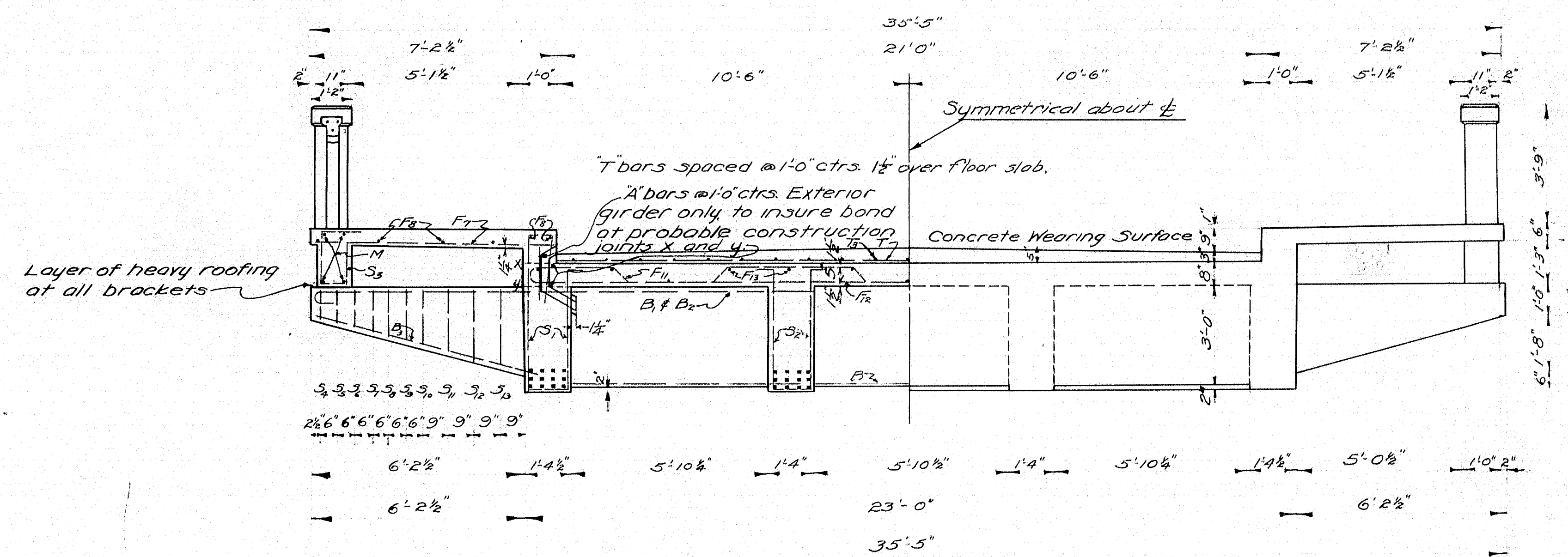
Mark	Size	No. Req'd	Total Length	Location
P ₃	3" ϕ	14	5'-6 1/2"	2'-6" Posts only

STATE HIGHWAY COMMISSION
BRIDGE DIVISION
DOVER BRIDGE
OVER
PISCATAQUIS RIVER
IN THE TOWN OF
DOVER-FOXCROFT
PISCATAQUIS COUNTY
REINFORCING STEEL
SHEET 4 OF 7 AUGUSTA ME. MAR. 1930

H.H.S. & G.W.S.
B.E.L.

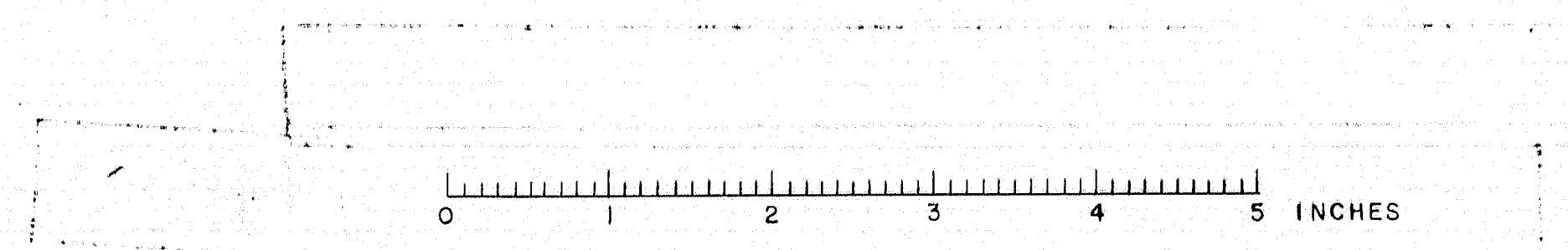


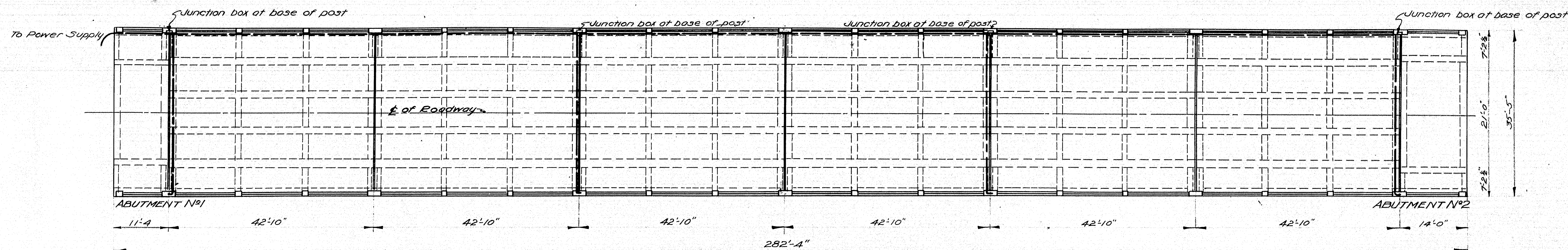
Revised as built, old figures erased
and correct dimensions put on in Black
Jan. 8, 1931
by B.E.L.



MAINE HIGHWAY COMMISSION
BRIDGE DIVISION
DOVER BRIDGE
OVER
PISCATAQUIS RIVER
IN THE TOWN OF
DOVER-FOXROFT- PISCATAQUIS CO
BRIDGE DETAILS
SHEET 5 OF 7 AUGUSTA, ME. MARCH 4, 30.

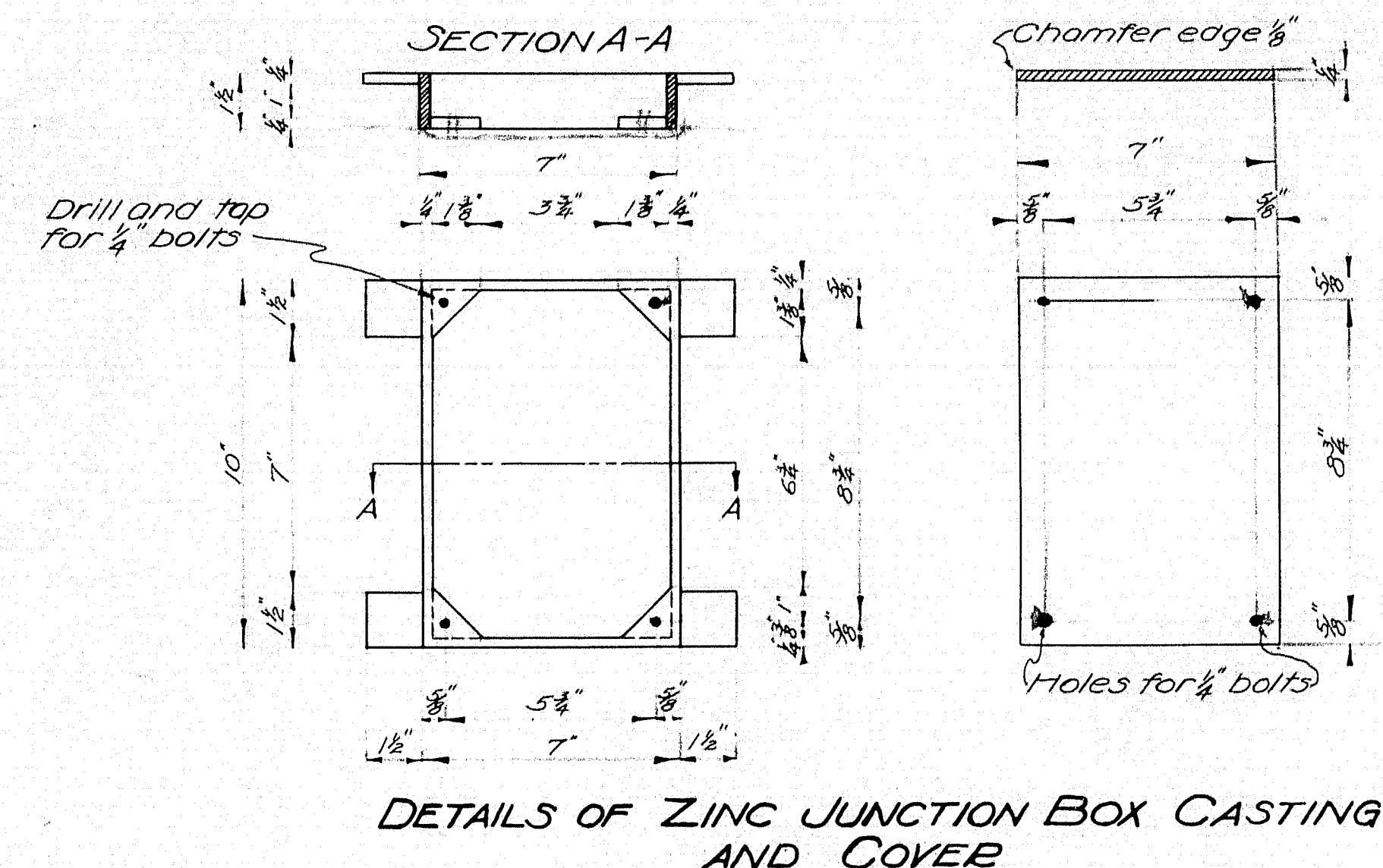
DESIGNED BY G.W.S. & H.H.S.
TRACED BY H.H.F.
CHECKED BY B.E.L.





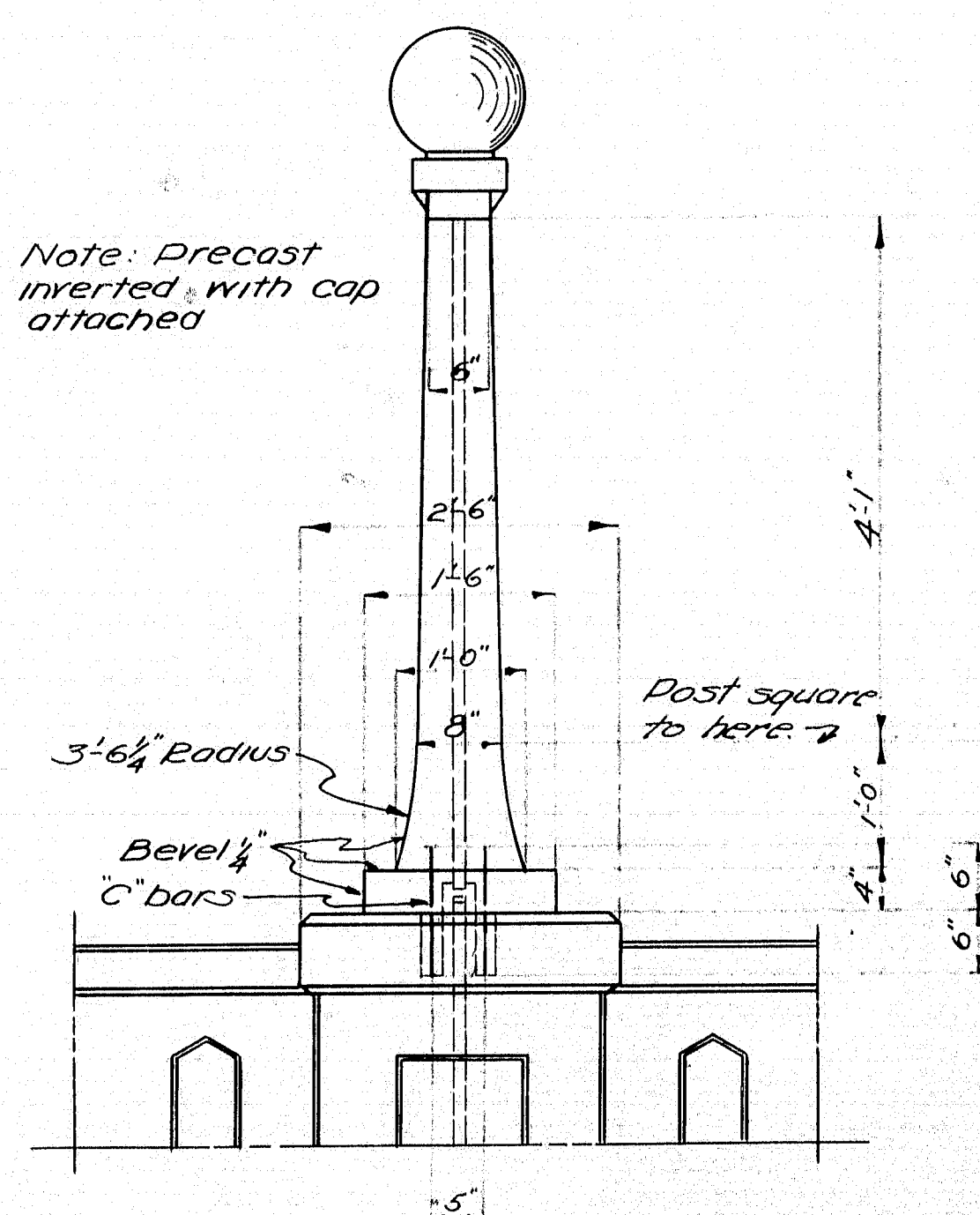
PLAN SHOWING CONDUITS

NOTE: Bends in conduit pipe shall be made as follows: Fill pipe with sand and compact the sand by tapping one end of pipe on the ground. Heat the pipe in a forge and bend while hot. The sand must be thoroughly dry before being placed in pipe. All burrs on ends of pipe shall be removed by reaming or filing. All conduit pipe to be 1 1/2".

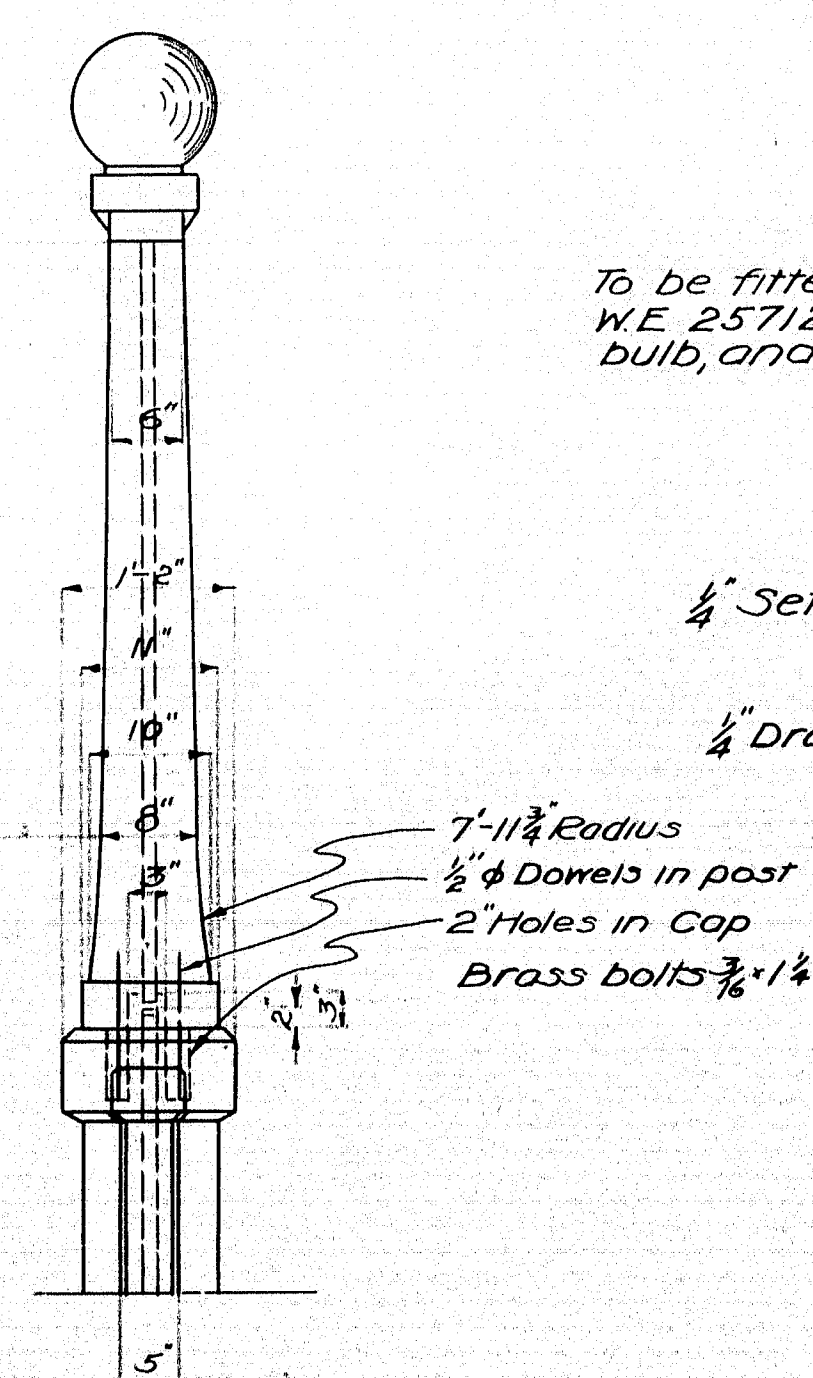


DETAILS OF ZINC JUNCTION BOX CASTING AND COVER

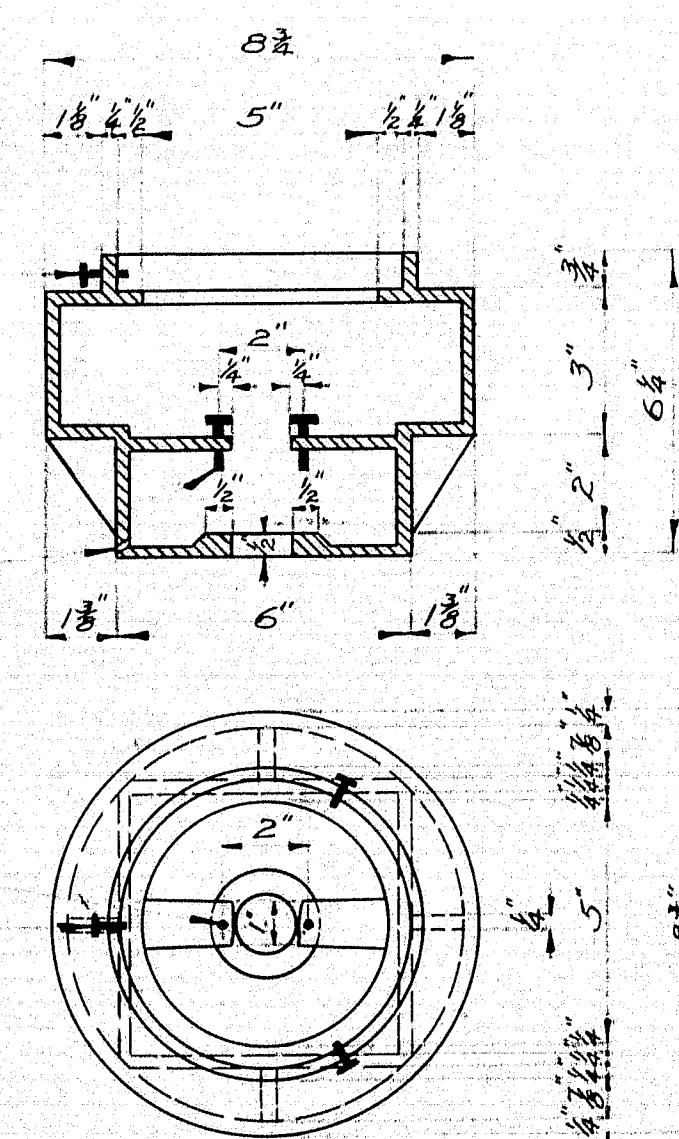
- REQUIRED
 4 Junction box castings (zinc)
 4 Covers (zinc)
 16 Brass bolts 1/4" x 1/2"



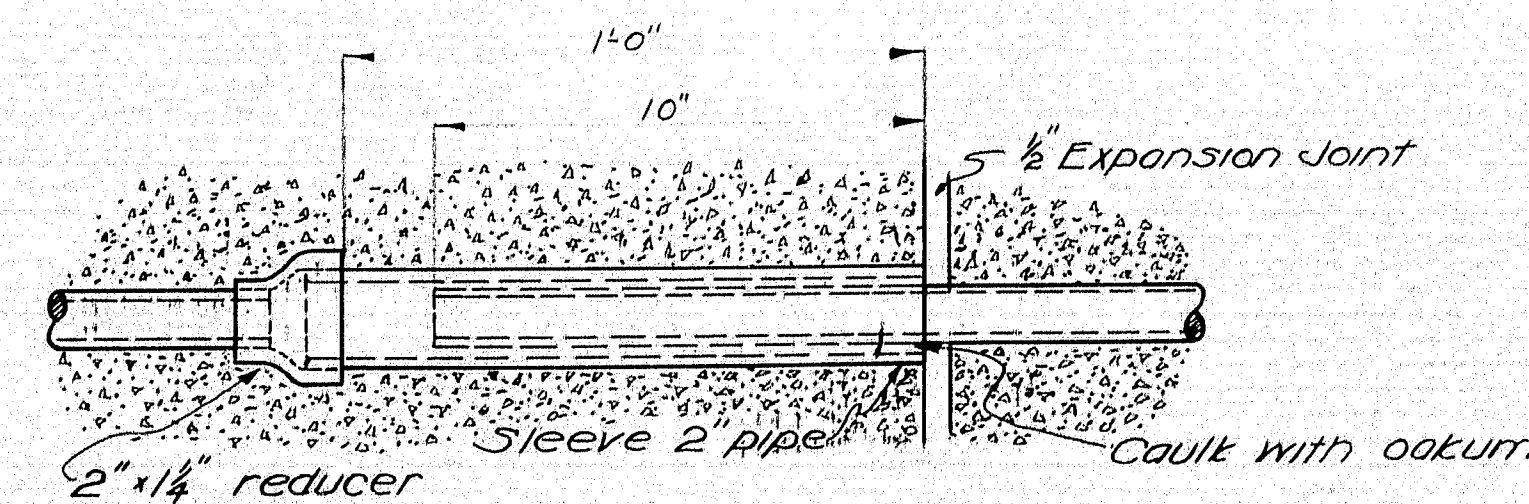
DETAIL OF LIGHT POST
 8 Required



BRONZE LIGHT POST
 8 Required



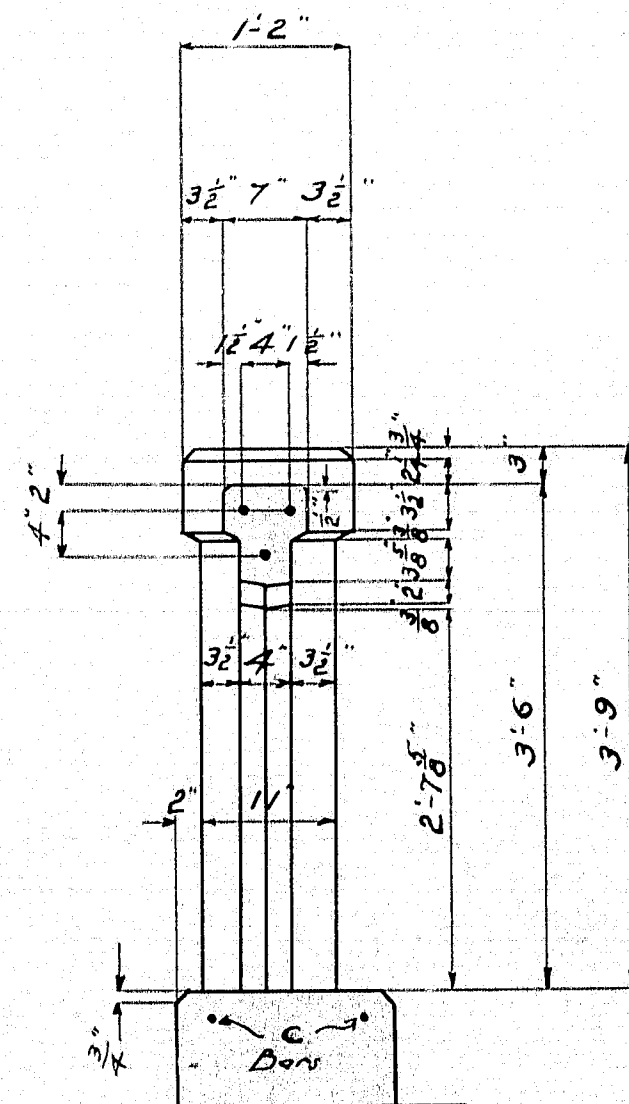
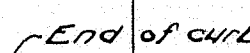
Top for 1 1/2" pipe



DETAIL OF CONDUIT AT EXPANSION JOINT

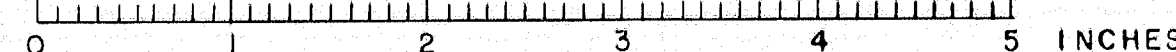
NOTE: Junction box and lamp post castings will be supplied by the Commission

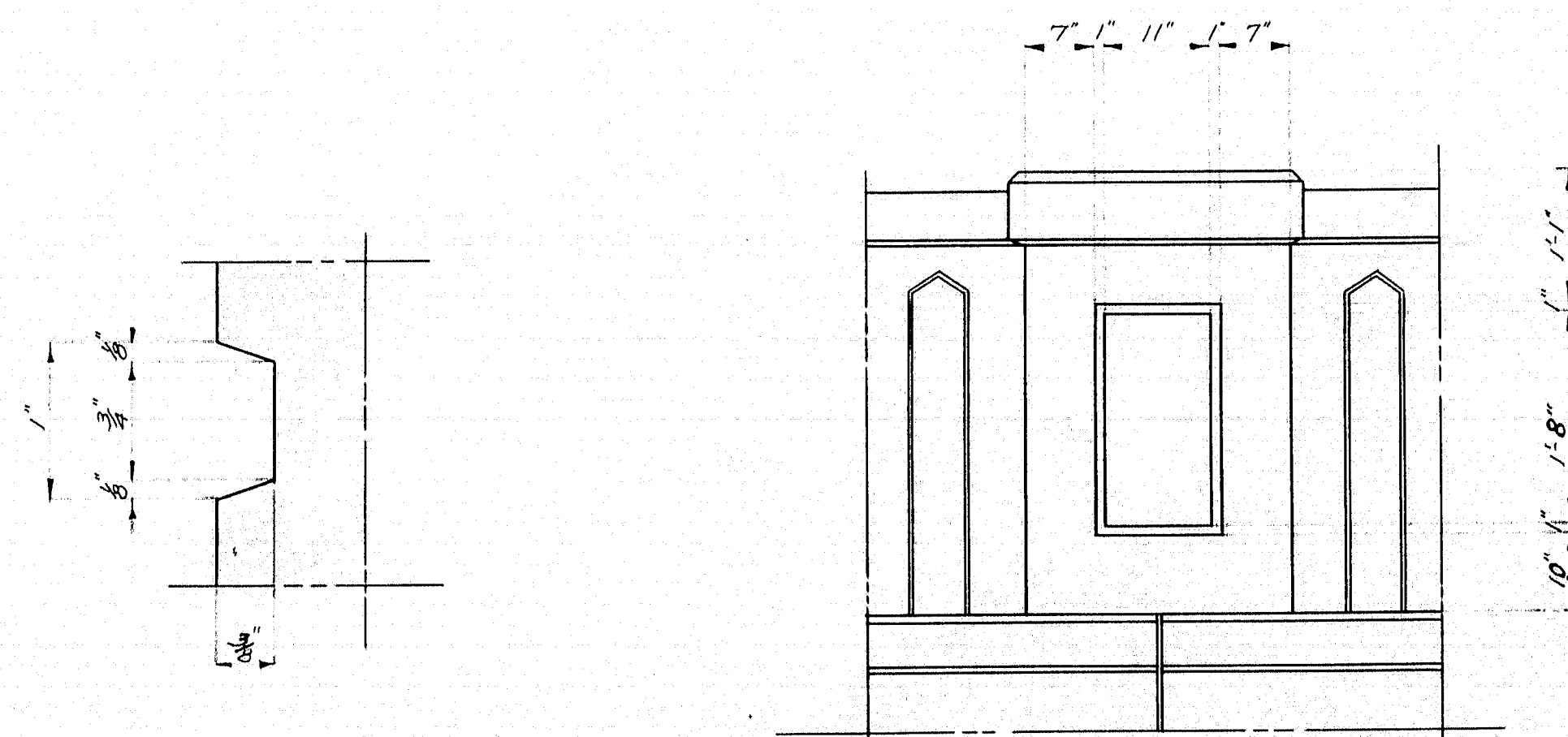
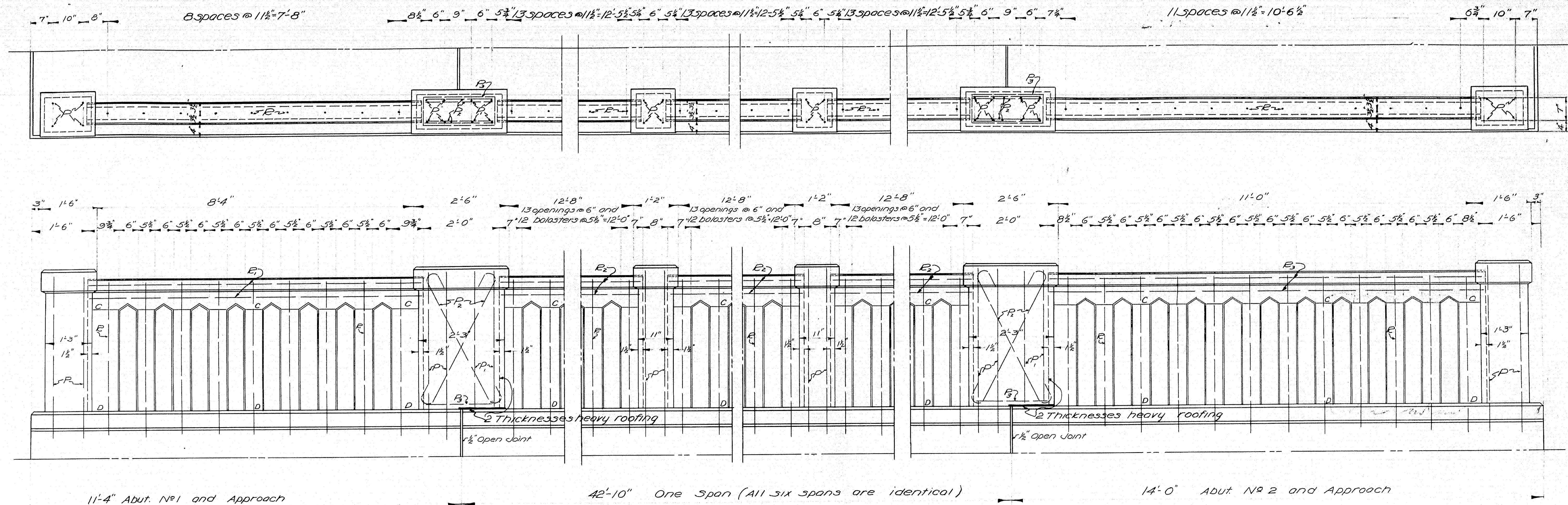
MAINE HIGHWAY COMMISSION
 BRIDGE DIVISION
 DOVER OVER BRIDGE
 PISCATAQUIS RIVER
 IN THE TOWN OF
 DOVER-FOX-CROFT PISCATAQUIS-CO.
 LIGHTING DETAILS
 SHEET 6 OF 7 AUGUSTA ME MARCH 6, 30



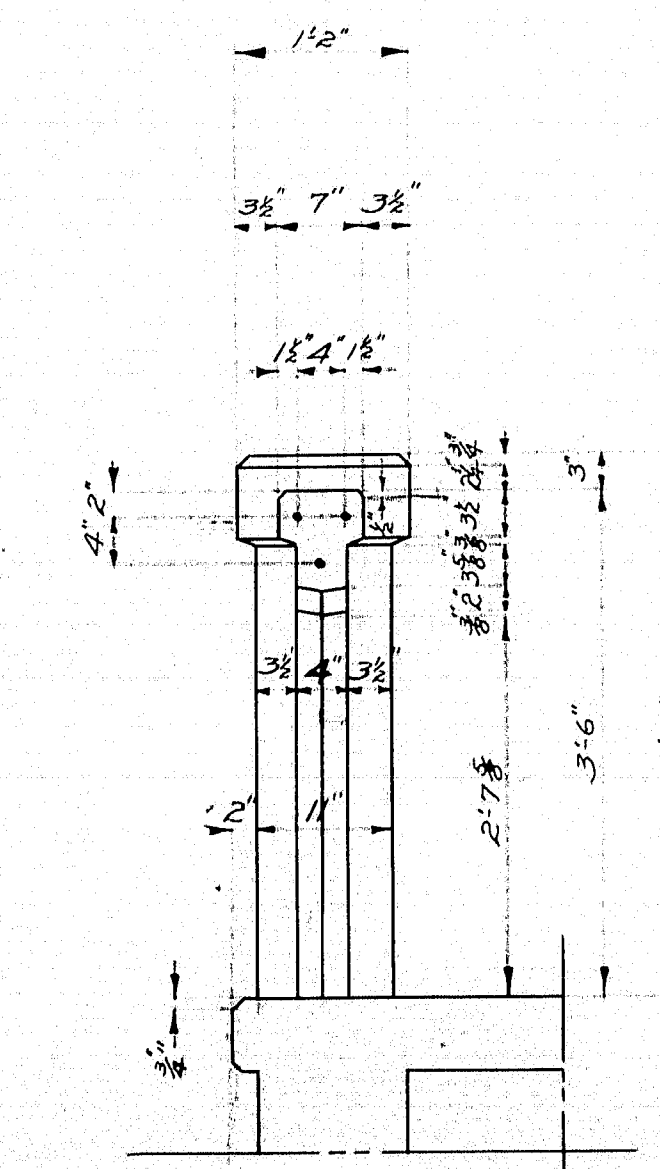
END VIEW~ALL POSTS

MAINE HIGHWAY COMMISSION
BRIDGE DIVISION
DOVER BRIDGE
OVER
PISCATAQUIS RIVER
IN THE TOWNSHIP OF
DOVER ~ FOXCROFT
PISCATAQUIS COUNTY
APPROACH RAIL DETAILS
SHEET 7a of AUGUSTA ME JUNE 6, 1930





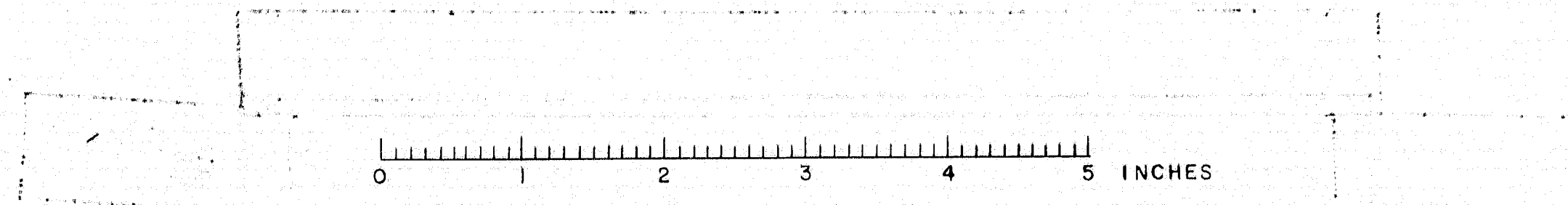
DETAIL OF PANEL
Located on each 2'-6" Post



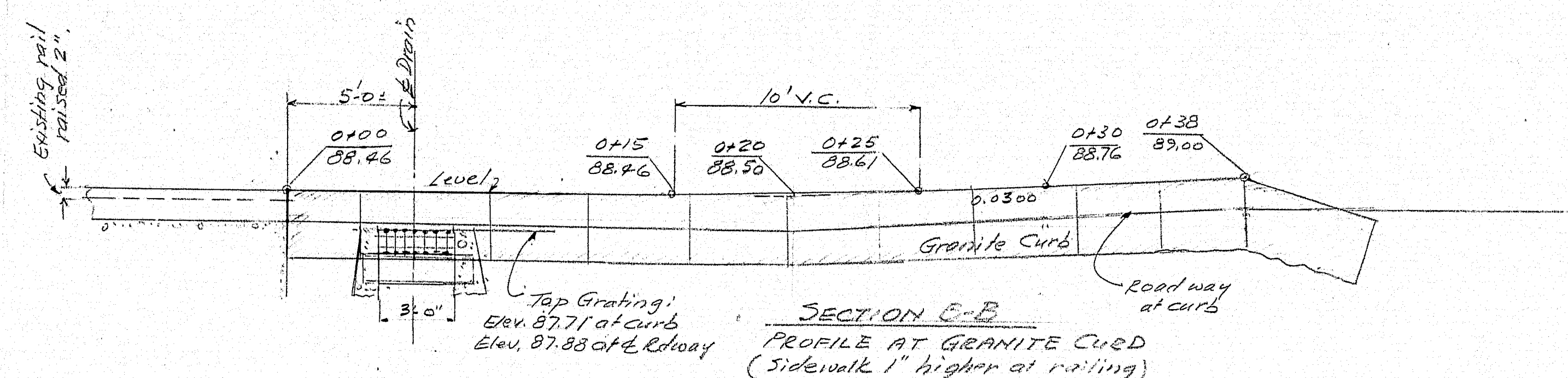
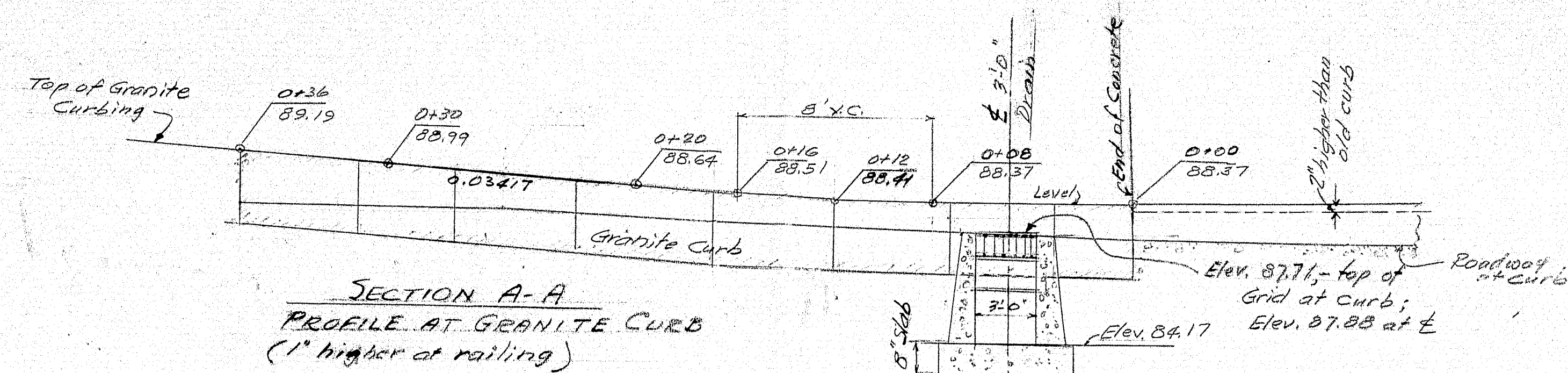
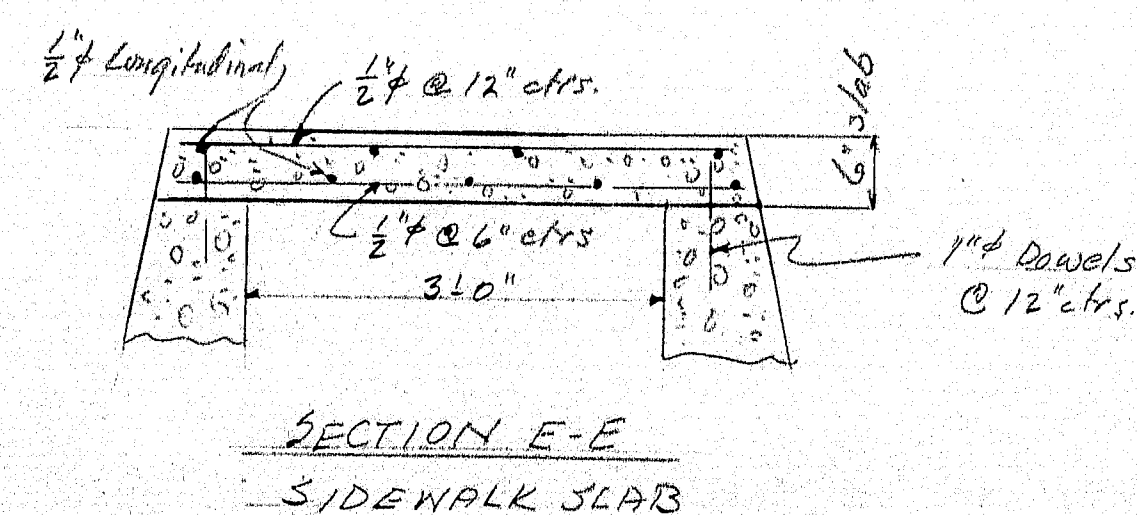
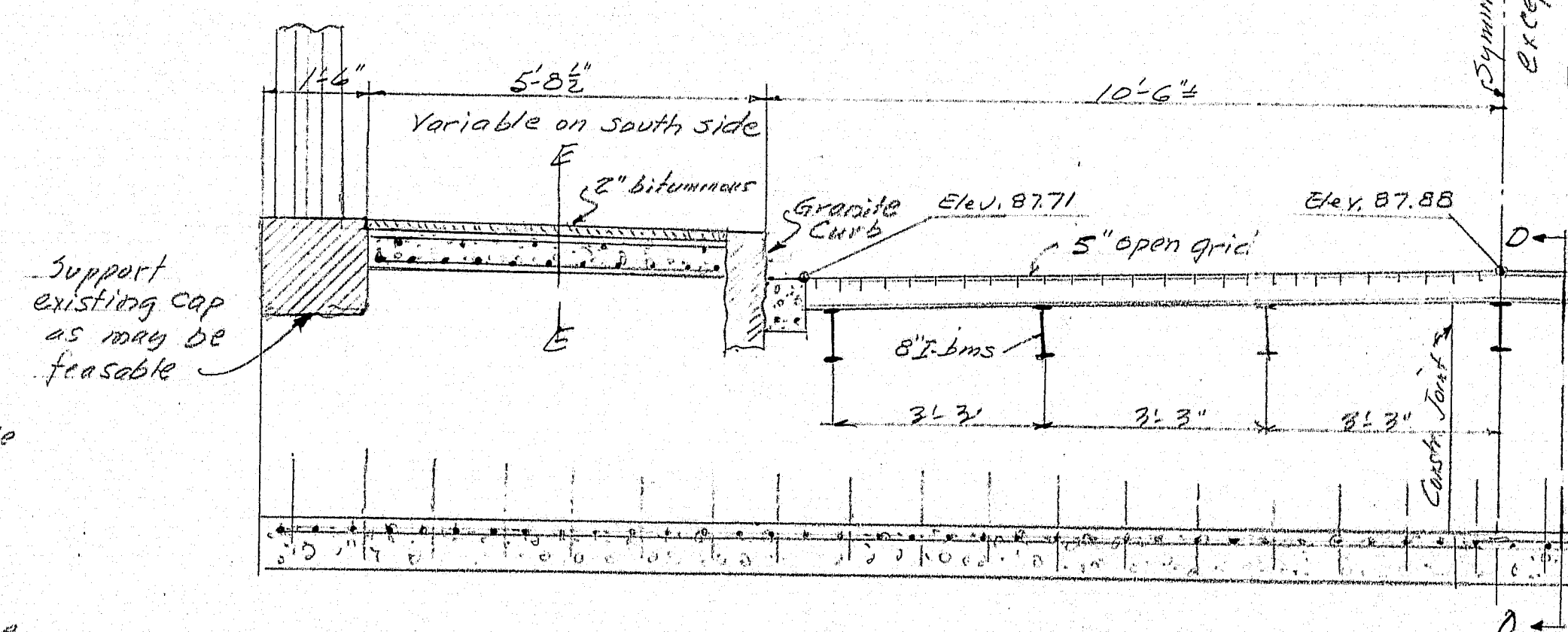
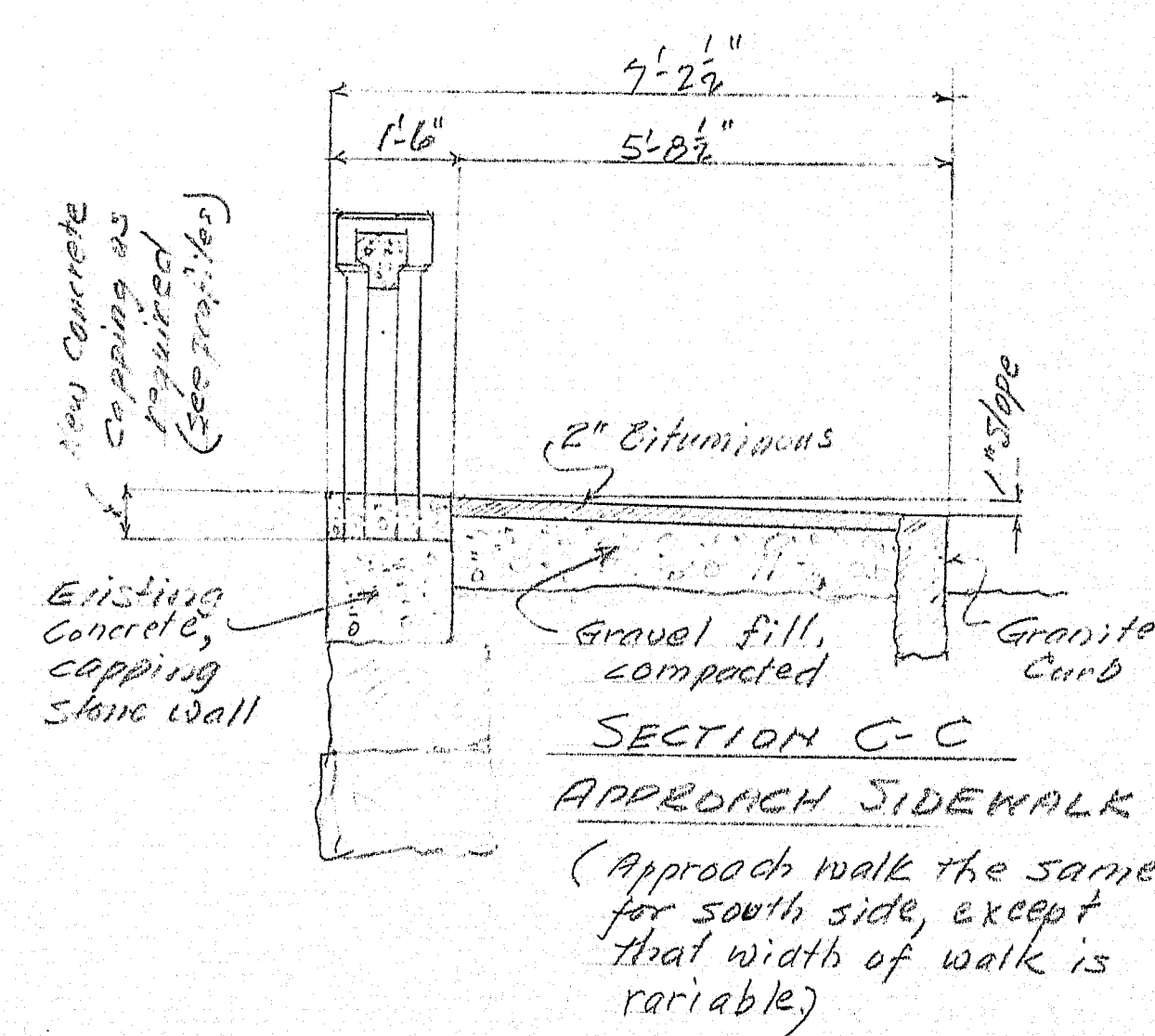
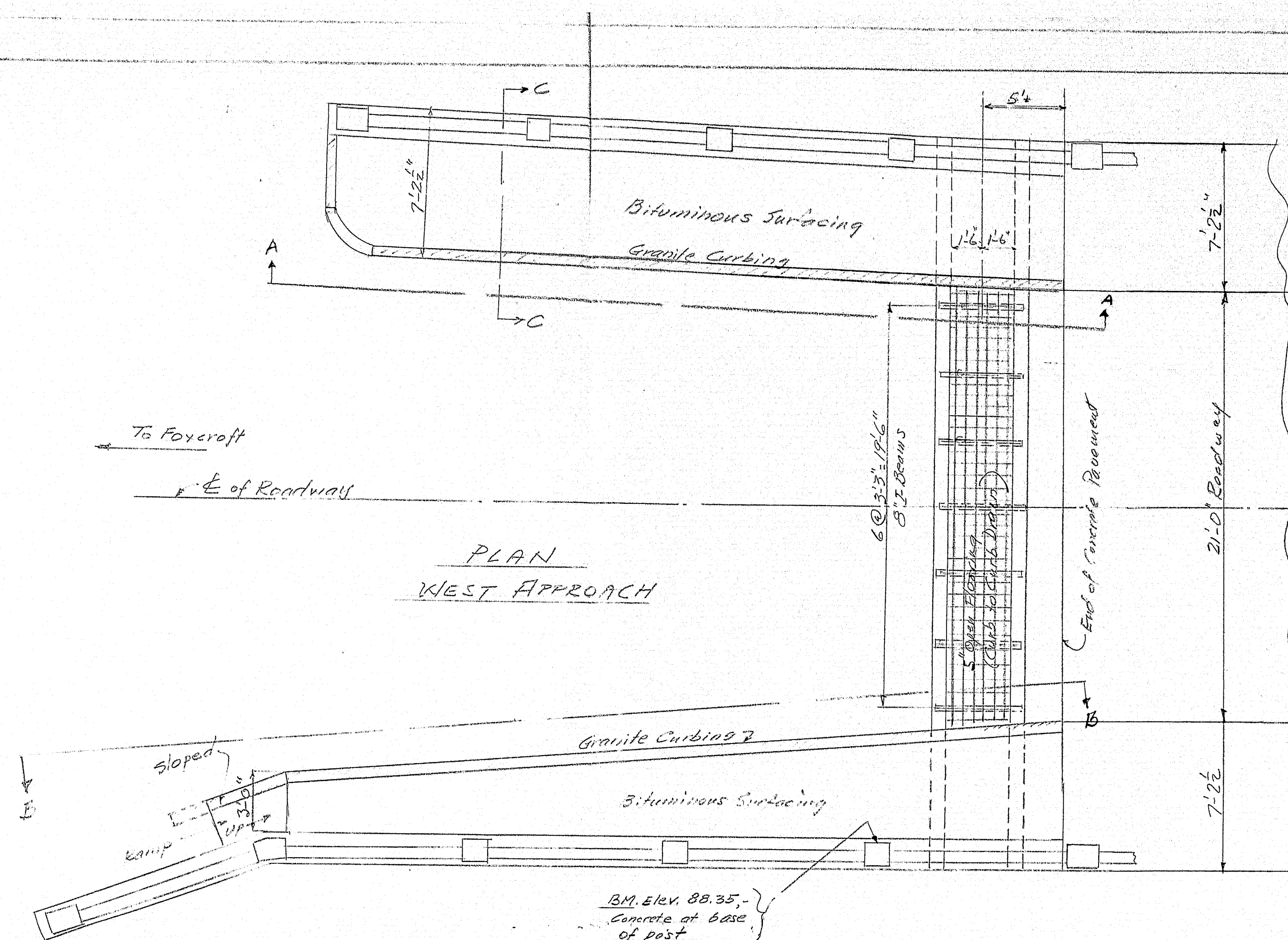
END VIEW-ALL POSTS

Sidewalk to be cast with fascia girder. Place vertical rods for posts and rail in fascia girder. Break the back at points C and D top and bottom of each vertical section between openings and at ends by placing there one layer of heavy roofing cut to fit form and slipped down over the reinforcement at the proper time. After rail forms are removed wrap end 6" of each rail with roofing felt. Fold in ends and build post forms so that rails project into posts 1/2". When forms are removed cut away felt left exposed. All exposed edges of concrete to be chamfered 1/2" unless otherwise indicated. Place two thicknesses of heavy roofing under half of each post setting over 1/2" open joint and use two thicknesses of heavy roofing in wrapping end 6" of rail at this point.

MAINE HIGHWAY COMMISSION
BRIDGE DIVISION
DOVER BRIDGE
OVER
PISCATAQUIS RIVER
IN THE TOWN OF
DOVER-FOXCROFT-PISCATAQUIS CO.
RAIL DETAILS
SHEET 7 OF 7 AUGUSTA, ME MARCH 10, 30



DESIGNED BY G.M. & M.H.S.
CHECKED BY H.H.F.
CHECKED BY B.E.L.

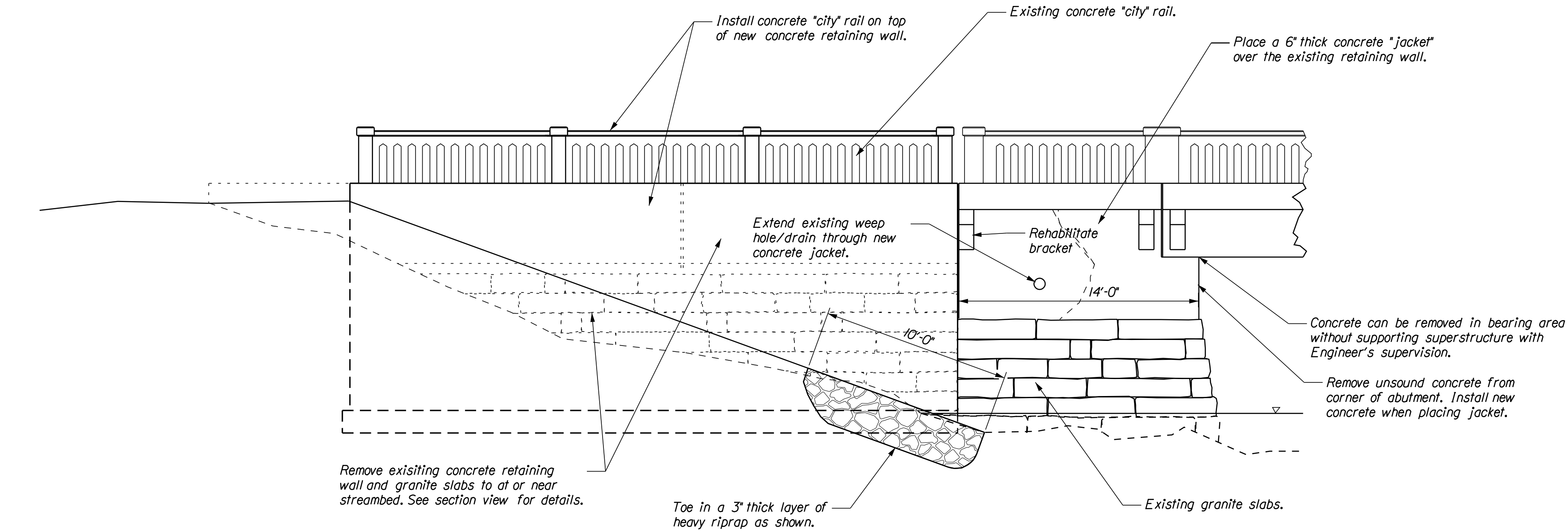


Date:5/19/2022

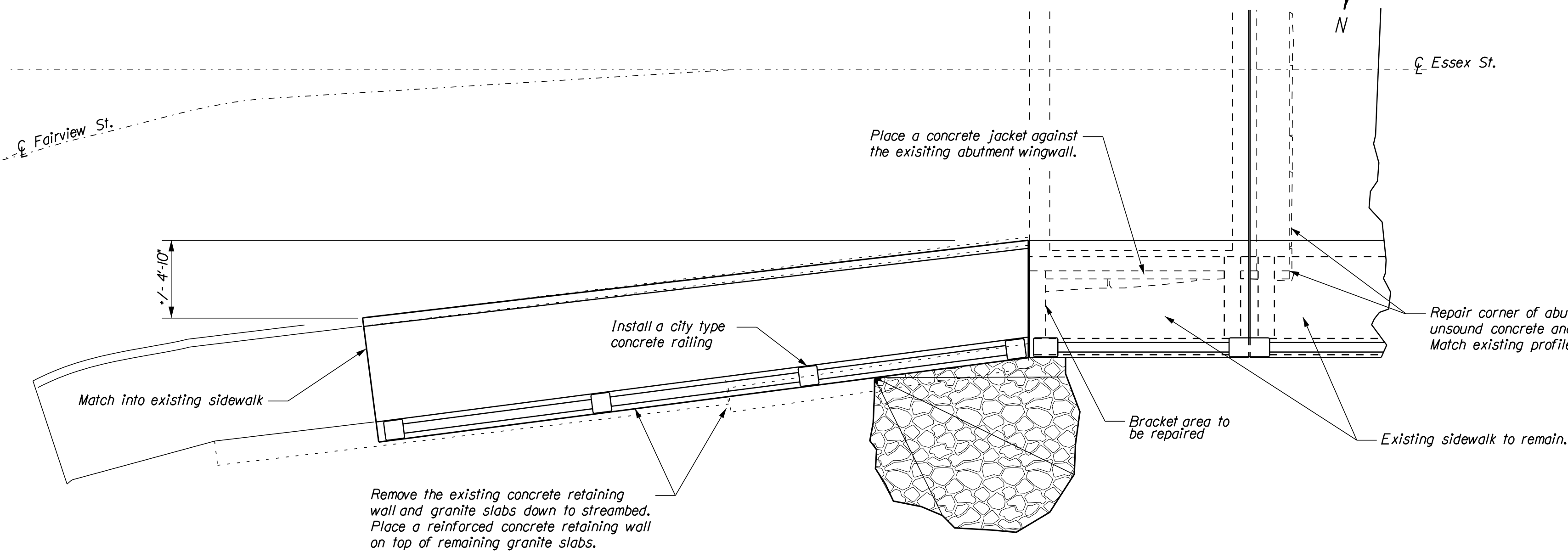
Username: Judy.Harden

PROJECT DESIGN ENGINEER	BY	DATE
DESIGN-DETAILED	LSBanner	5/2006
CHECKED		
REVISIONS		
FIELD CHANGES		

PLANS



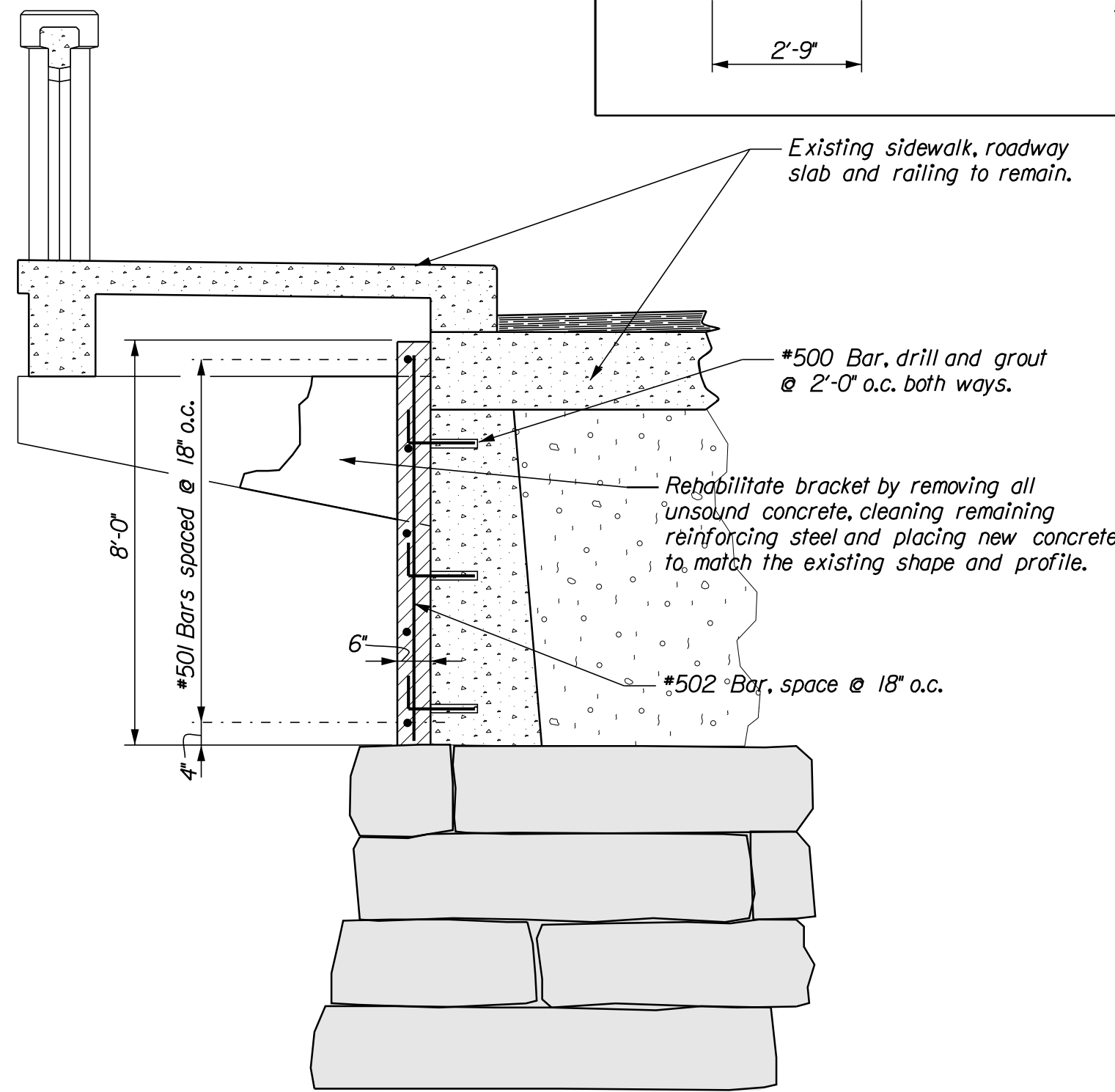
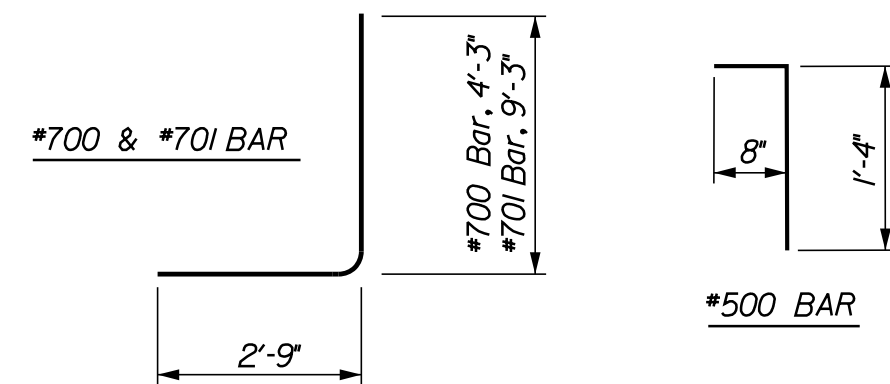
ELEVATION VIEW OF NORTHEAST CORNER OF BRIDGE



PLAN VIEW OF NORTHEAST CORNER OF BRIDGE

REINFORCING STEEL SCHEDULE

MARK	SIZE	NO.	LENGTH	LOCATION
*500	#5	24	2'-0"	Wingwall dowel
*501	#5	5	13'-8"	Wingwall horizontal
*502	#5	11	7'-10"	Wingwall vertical
*503	#5	16	4'-6"	Rail endpost
*504	#5	40	4'-3"	Railing post
*505	#5	6	20'-0"	Railing horizontal
*506	#5	82	7'-0"	Footing
*507	#5	22	20'-0"	Horiz. retaining wall
*508	#5	28	15'-10"	Vertical retaining wall
*600	#6	42	15'-10"	Vert. retaining wall dowel
*601	#6	22	20'-0"	Footing
*700	#7	82	7'-0"	Vert. retaining wall dowel
*701	#7	82	12'-0"	Vert. retaining wall dowel
*800	#8	30	20'-0"	Horiz. retaining wall dowel



TYPICAL SECTION THROUGH SIDEWALK ON BRIDGE

(Looking Easterly)

LEGEND

	Section view of new concrete
	Section view of existing concrete
	Section view of existing granite

GENERAL NOTES

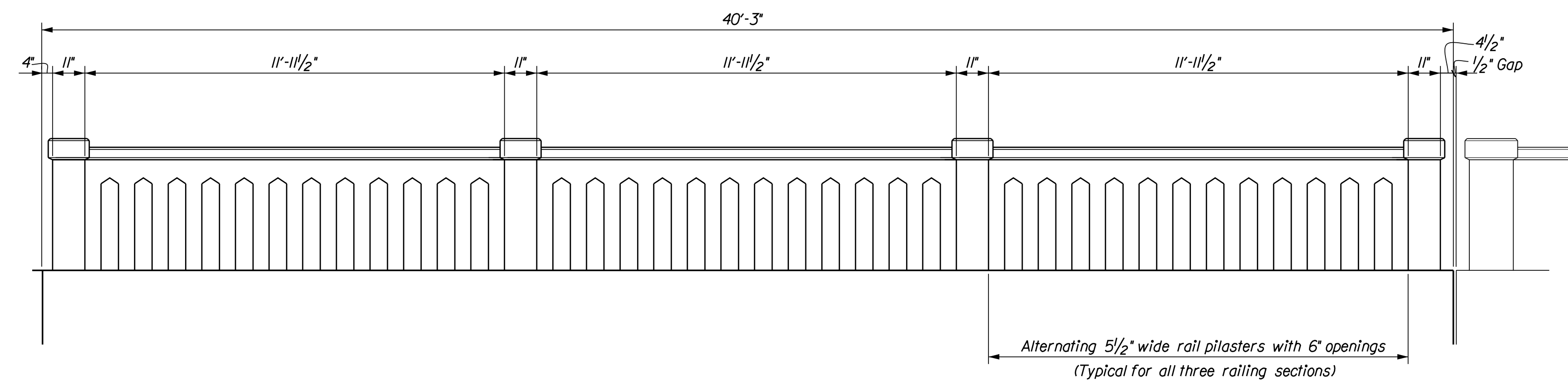
- 1...Chamfer all exposed edges of concrete $\frac{3}{4}"$
- 2...All reinforcing steel shall have a minimum of 2" of clearance except wall footing which shall have 3" of clearance.
- 3...Reinforcing steel splice lengths are as follows:
*5 bar 1'-9", *6 bar 2'-3", *7 bar 3'-0", *8 bar 4'-0".

STATE OF MAINE
DEPARTMENT OF TRANSPORTATION

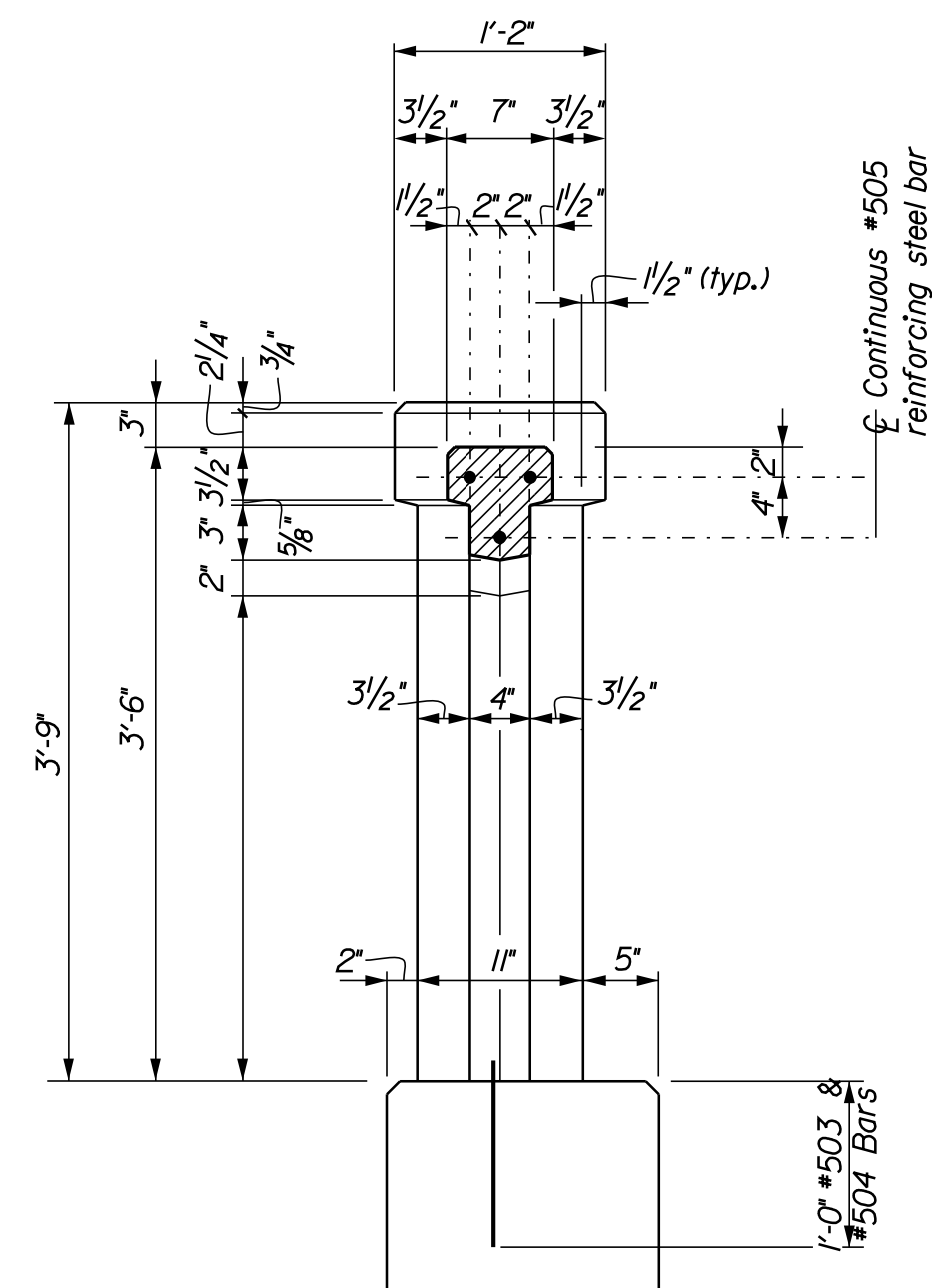
DOVER BRIDGE
OVER
PISCATAQUIS RIVER
IN
DOVER-FOXCROFT
PISCATAQUIS COUNTY

EAST ABUTMENT REHAB

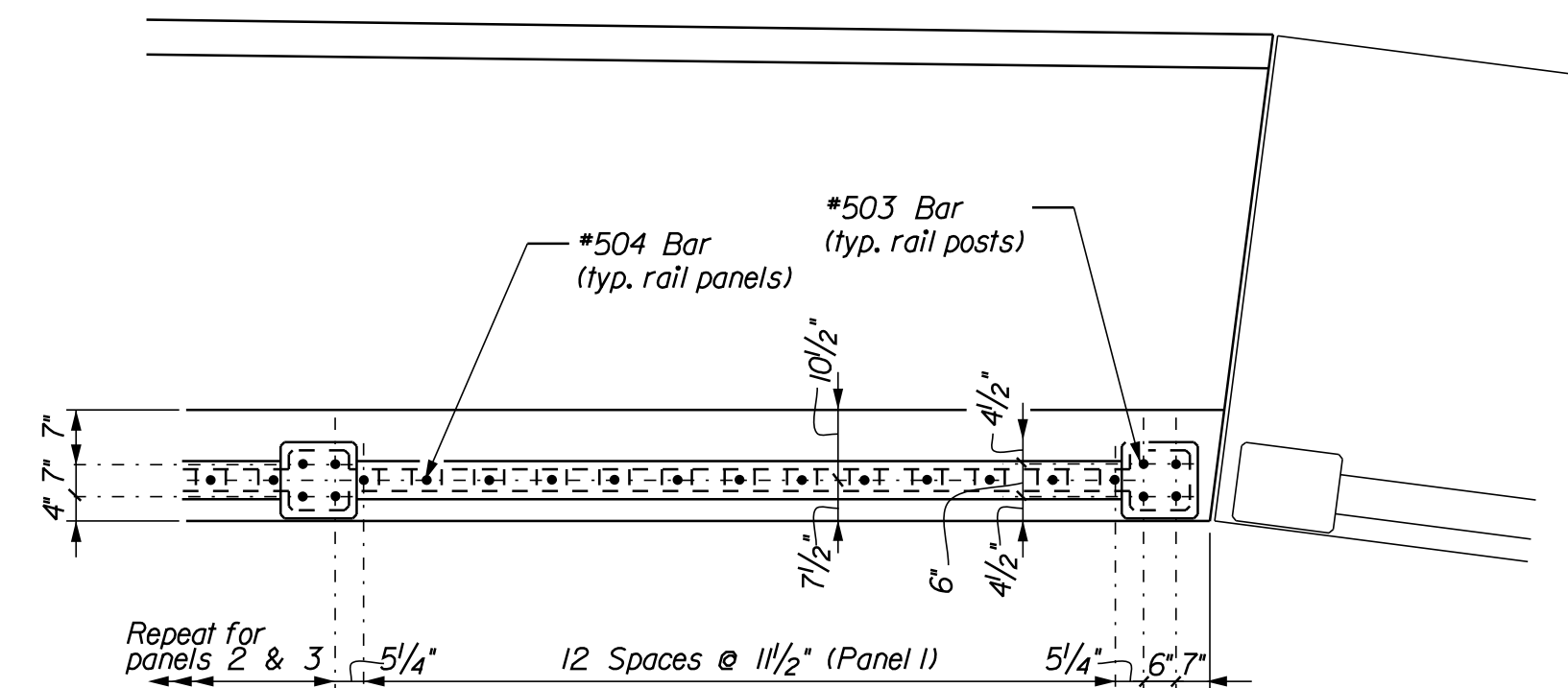
F,H,W.A. REG. NO.	STATE	PROJECT NUMBER	SHEET NO.	TOTAL SHEETS
1	MAINE	Bridge #5118	2	2



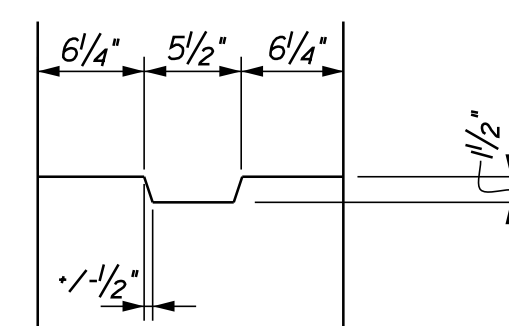
ELEVATION VIEW



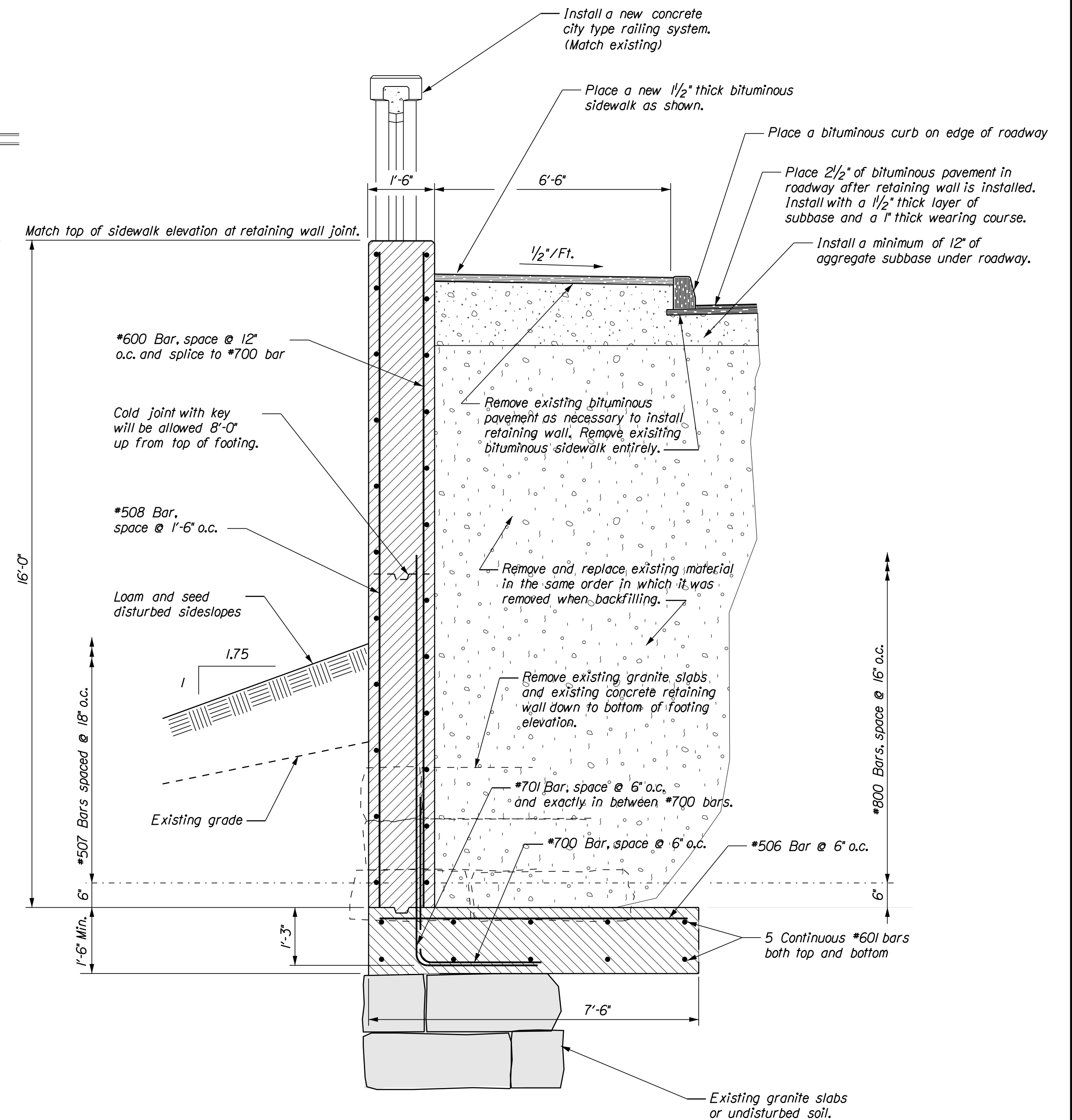
TYPICAL SECTION



PLAN VIEW



SHEAR KEY DETAIL
(Footing shear key is similar)



TYPICAL SECTION THROUGH RETAINING WALL

NOTE: Augusta office to be notified after excavation is complete but before footing has been placed so a complete soils analysis can be performed.

PROJECT DESIGN ENGINEER	BY	DATE
DESIGN-DETAILED	LSBanner	5/2/2006
CHECKED		
REVISIONS		
FIELD CHANGES		

Date: 5/19/2022

Username: Judy.Harden

STATE OF MAINE
DEPARTMENT OF TRANSPORTATION

DOVER BRIDGE
OVER
PISCATAQUIS RIVER
IN
DOVER-FOXCROFT
PISCATAQUIS COUNTY

EAST ABUTMENT REHAB.