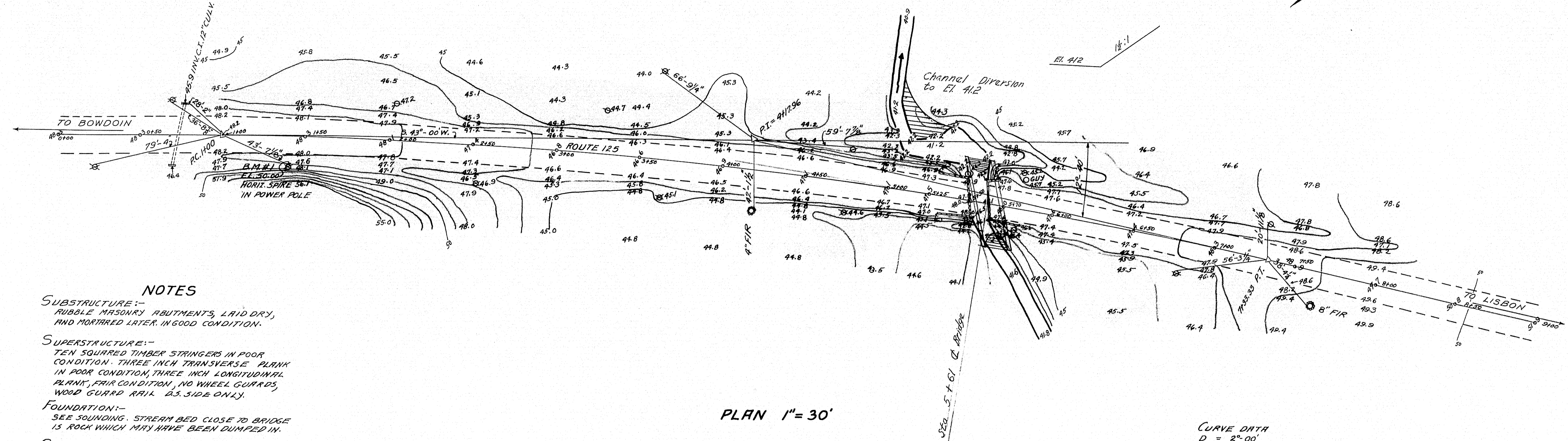
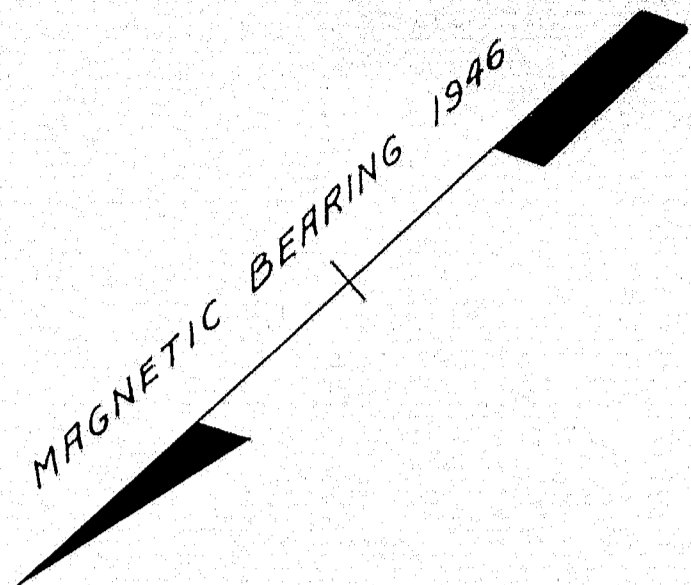


SOUNDING 0
 D.S. CORNER ABUT. NO. 1
 GROUND ELEV. 42.2
 0.0 TO 1.5' BY HAND
 1.5' TO 3.5' 1/2" BLOW
 3.5' TO 8.5' 1" BLOW
 8.5' TO 12.0' 3/4" BLOW
 12.0' TO 14.0' 3/8" BLOW
 THRU HARD PACKED MEDIUM
 FINE SAND



NOTES

SUBSTRUCTURE:-
 RUBBLE MASONRY ABUTMENTS, LAID DRY,
 AND MORTARED LATER, IN GOOD CONDITION.

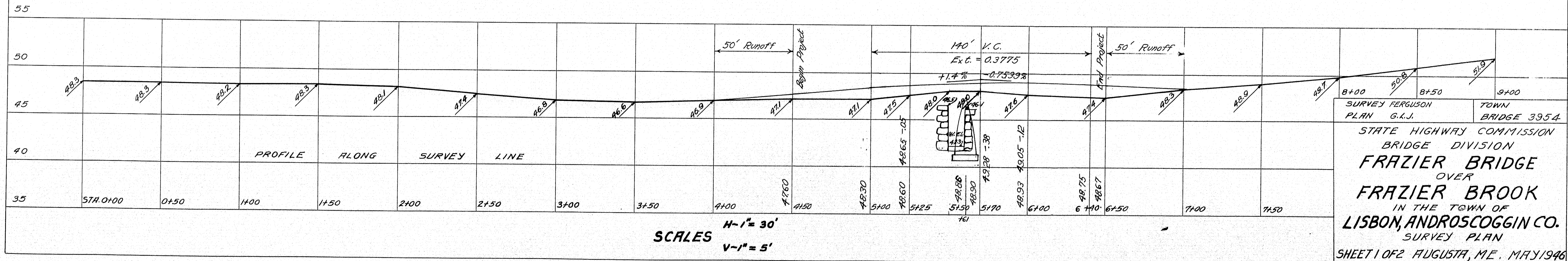
SUPERSTRUCTURE:-
 TEN SQUARED TIMBER STRINGERS IN POOR
 CONDITION. THREE INCH TRANSVERSE PLANK
 IN POOR CONDITION, THREE INCH LONGITUDINAL
 PLANK, FAIR CONDITION, NO WHEEL GUARDS,
 WOOD GURD RAIL, D.S. SIDE ONLY.

FOUNDATION:-
 SEE SOUNDING. STREAM BED CLOSE TO BRIDGE
 IS ROCK WHICH MAY HAVE BEEN DUMPED IN.

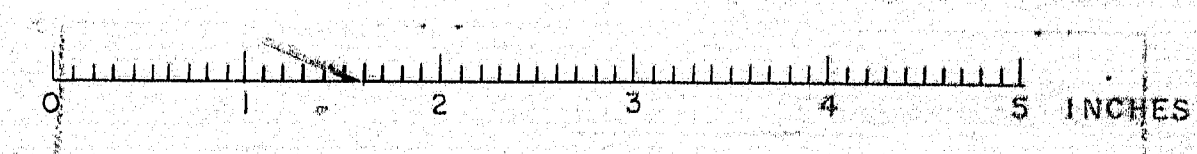
STREAM:-
 PRACTICALLY NO CURRENT. HIGH WATER
 ABOUT 1-6" ABOVE PRESENT STAGE.
 1936 HIGH WATER REPORTED TO BE LEVEL
 WITH ROAD.

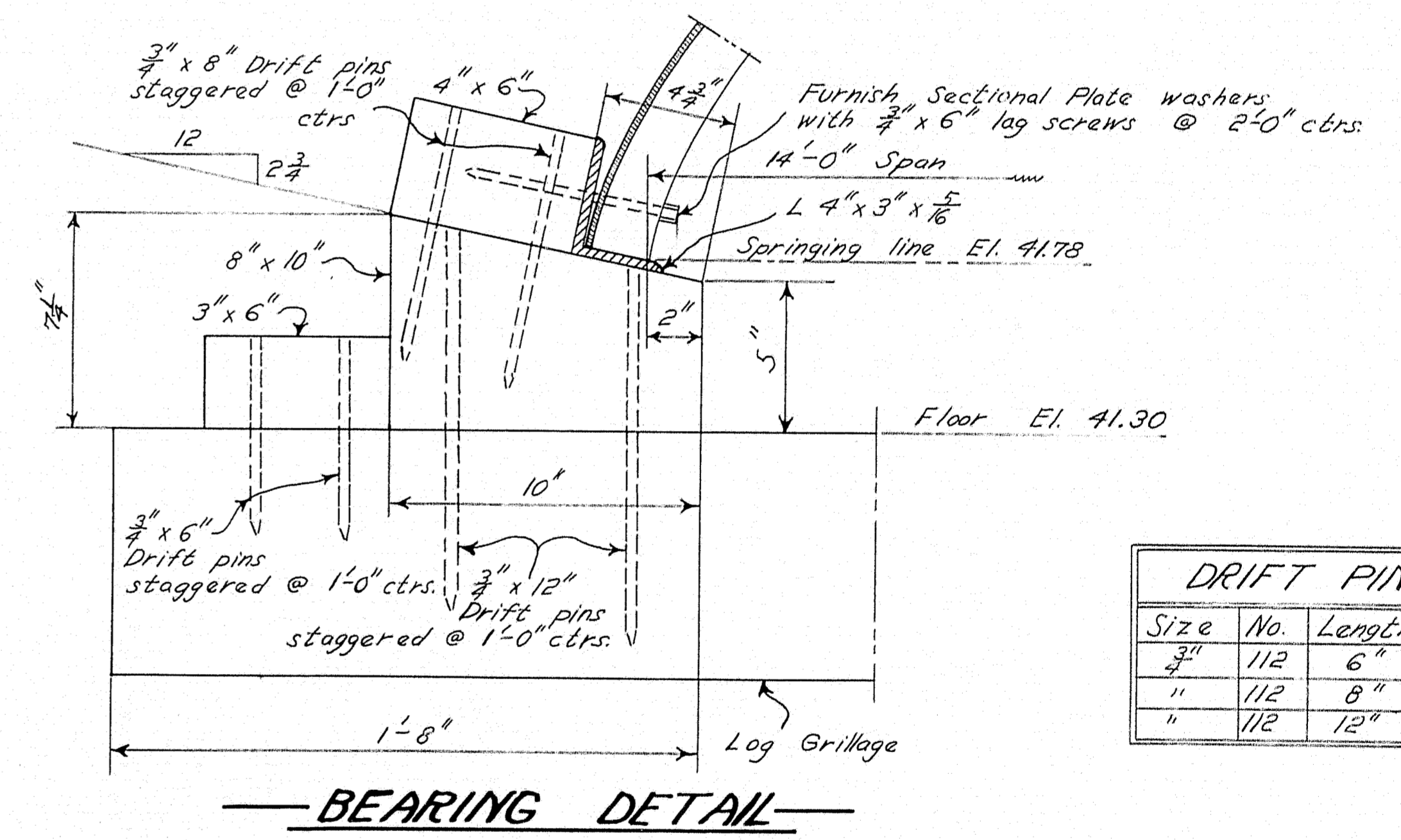
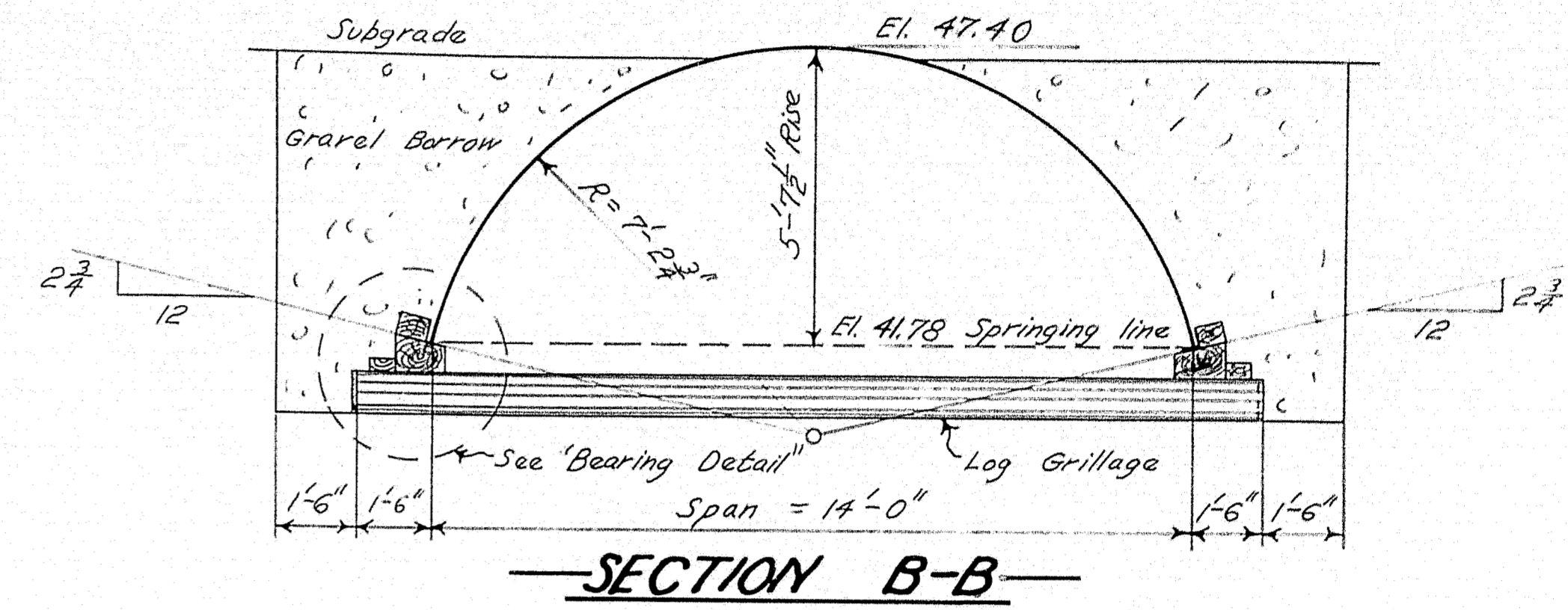
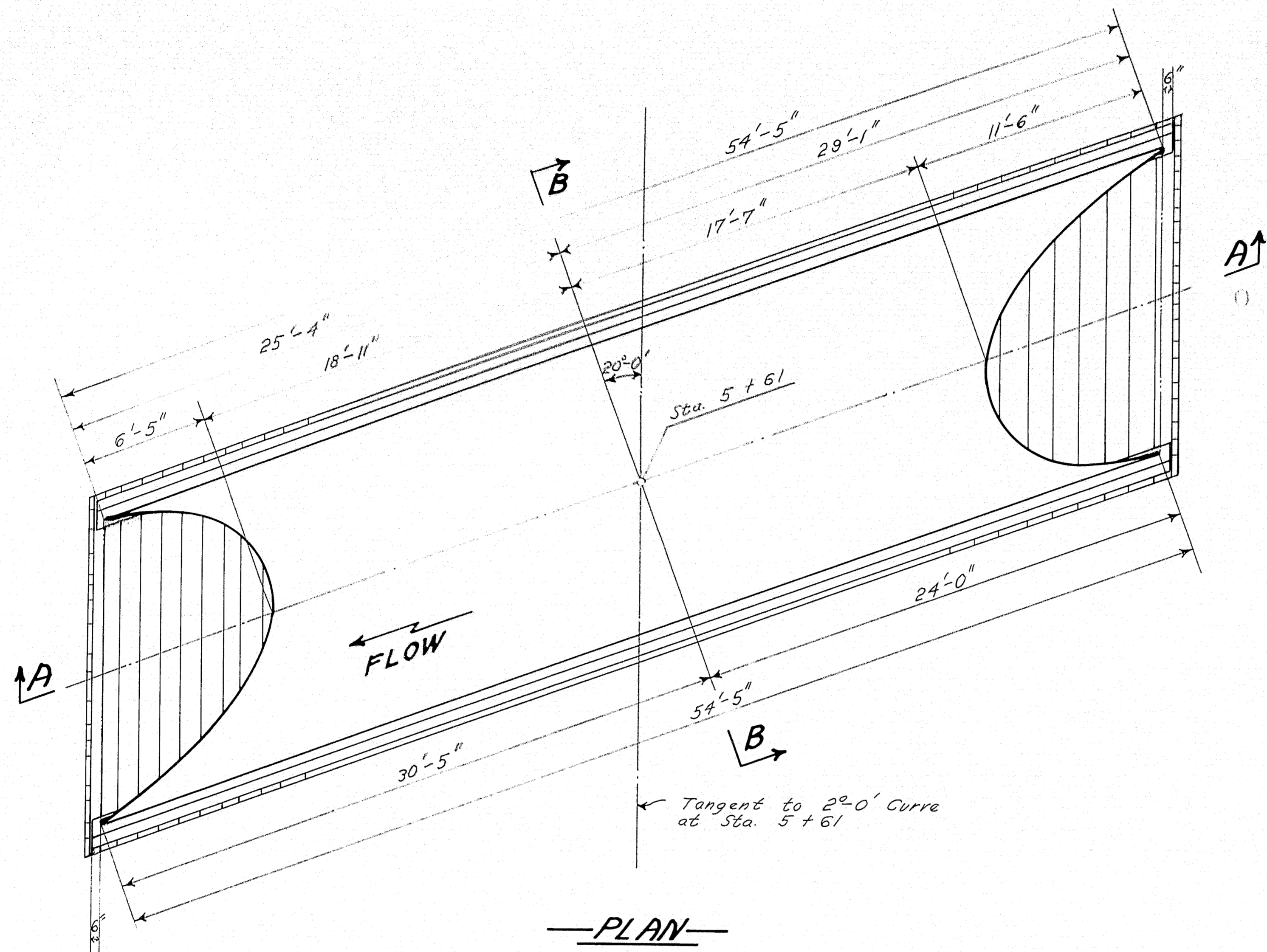
APPROACHES:-
 SURFACE TREATED GRAVEL IN GOOD CONDITION.

CURVE DATA
 D = 2°-00'
 Δ = 12°-40'R
 T = 317.96
 L = 633.33
 P.C. = 1+00
 P.I. = 4+17.96
 P.T. = 7+33.33

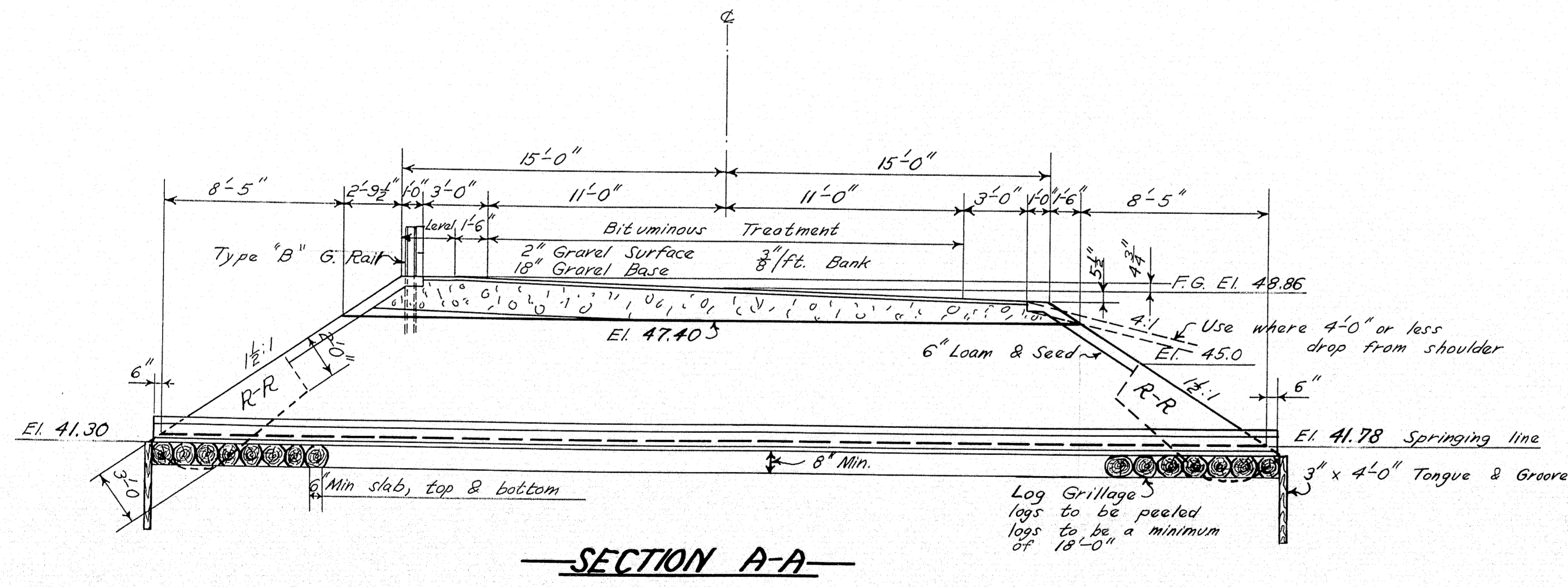


SCALES
 H-1" = 30'
 V-1" = 5'





| DRIFT PINS | | |
|------------|-----|--------|
| Size | No. | Length |
| 3/4" | 112 | 6" |
| " | 112 | 8" |
| " | 112 | 12" |

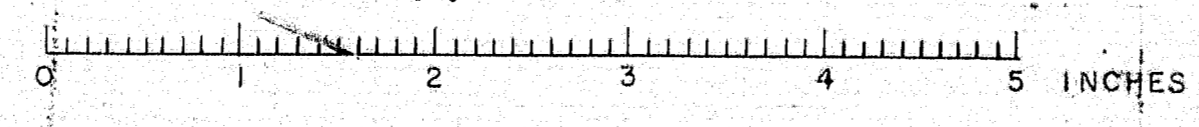


MATERIAL REQUIRED

One sectional plate arch as shown, galvanized with bolts. The minimum section modulus per inch of horizontal projection to be .031 and a minimum thickness of #7 gage. There shall be a minimum of four (4) 7/8" bolts per foot of longitudinal seam. Lag screws and angles as shown to be hot dipped galvanized after fabrication and furnished with the arch. Span & rise may be varied slightly if approved by the Engineer.

Specifications: A. A. S. H. O. Standard Specifications for Highway Bridges. Loading H-20-44

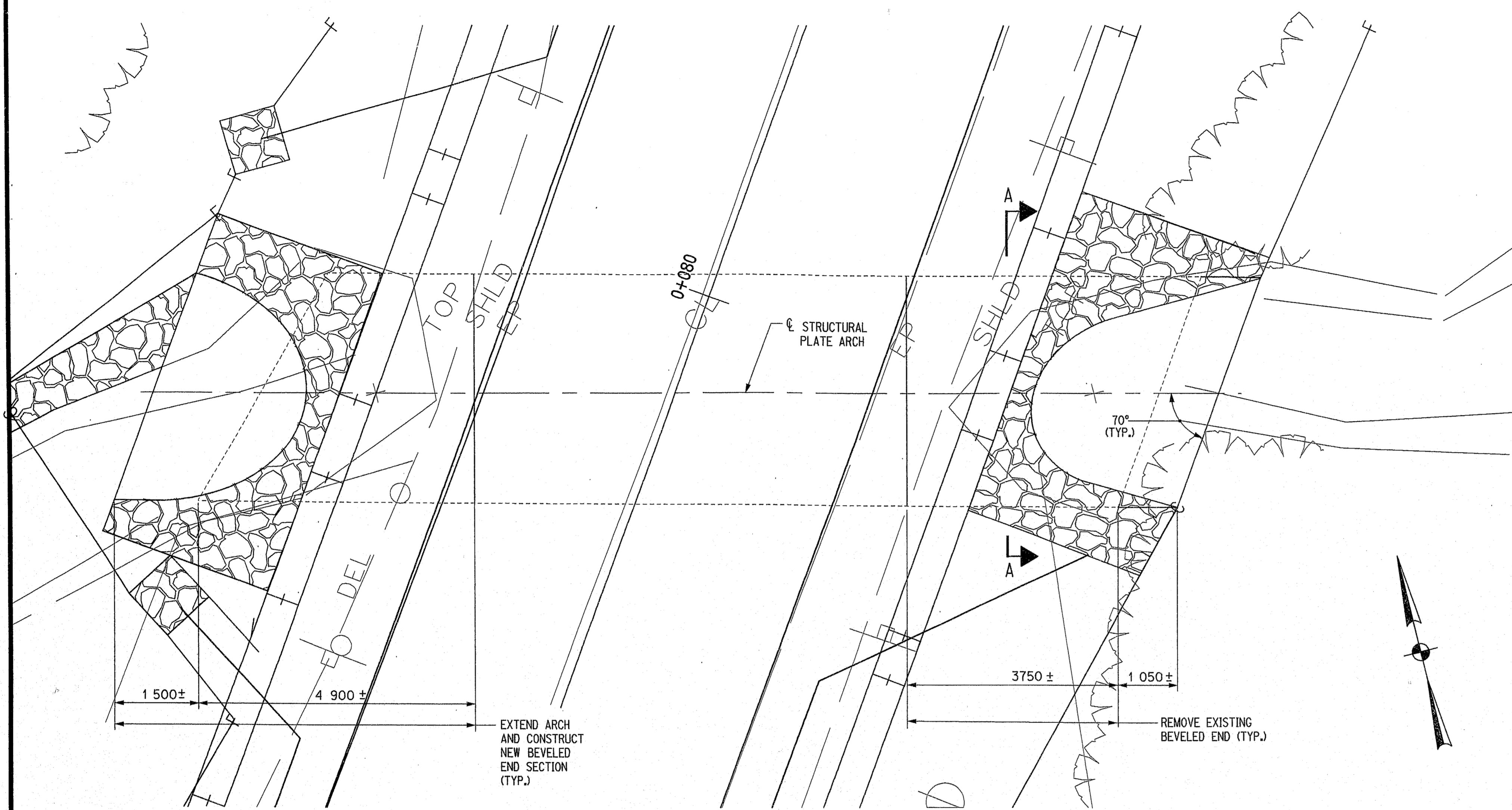
| | |
|---|---------------|
| DESIGN & TRACE - FLYNT | BRIDGE - 3954 |
| CHECK - Blake | |
| STATE HIGHWAY COMMISSION BRIDGE DIVISION | |
| FRAZIER BRIDGE | |
| OVER | |
| FRAZIER BROOK | |
| IN THE TOWN OF | |
| LISBON, ANDROSCOGGIN CO. | |
| PLATE ARCH | |



METRIC

1. All dimensions are in millimeters unless otherwise noted.
2. All elevations and stations are in meters.

| | | | | |
|-------------------|-------|----------------|-----------|--------------|
| F.H.W.A. REG. NO. | STATE | PROJECT NUMBER | SHEET NO. | TOTAL SHEETS |
| 1 | MAINE | STP-8816(10)X | 22 | 26 |



GENERAL PLAN
SCALE: 1:50

STRUCTURAL PLATE NOTES

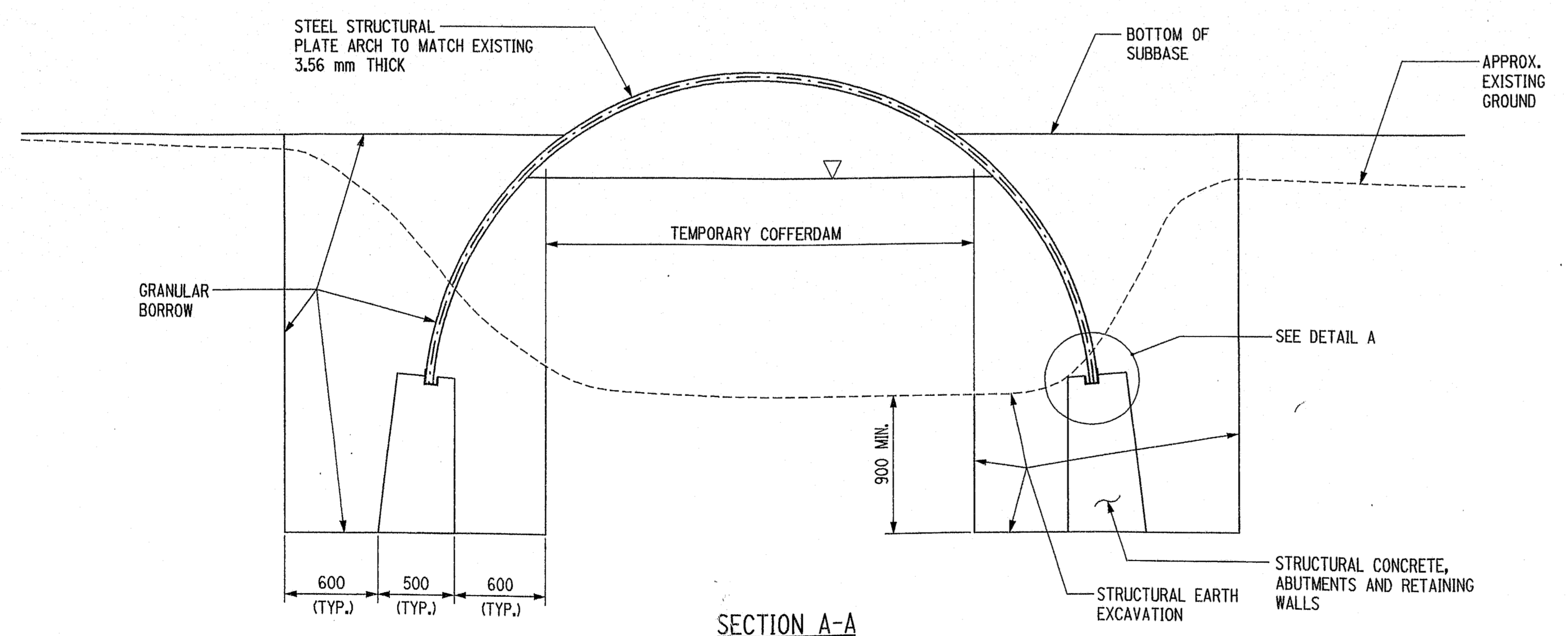
1. *STRUCTURAL PLATE ARCH REQUIRED, SIZED TO MATCH EXISTING.* TOP PLATES SHALL BE 3.56 MM.
2. ENDS SHALL BE CUT ON A 1:1.75 BEVEL NORMAL TO THE END SKEW SHOWN ON THE DETAILS.
3. GRANULAR BORROW SHALL MEET THE REQUIREMENTS OF *SUBSECTION 703.19, MATERIAL FOR UNDERWATER BACKFILL.*
4. RIPRAP ADJACENT TO THE PIPE SHALL BE CAREFULLY PLACED SO AS NOT TO DAMAGE THE PIPE AND SO THAT THE FINISHED *SLOPE WILL MATCH THE ENDS OF THE PIPE. ANY EXTRA LABOR, MATERIAL OR EQUIPMENT USED WILL BE CONSIDERED INCIDENTAL *TO ITEM 610.08, PLAIN RIPRAP.*
5. PLACE A 600 MM WIDE TEMPORARY EROSION CONTROL BLANKET ALONG THE TOP OF THE RIPRAP AND OVER THE ARCH. TYPICAL AT BOTH ENDS OF ARCH.
6. REMOVAL OF THE EXISTING BEVELED ENDS AND CUTTING OLD & NEW PIPE WILL BE CONSIDERED INCIDENTAL TO ITEM 509.12
7. INSTALLING & REMOVING TEMPORARY COFFERDAMS WILL BE CONSIDERED INCIDENTAL TO ITEM 206.061

ESTIMATED QUANTITIES

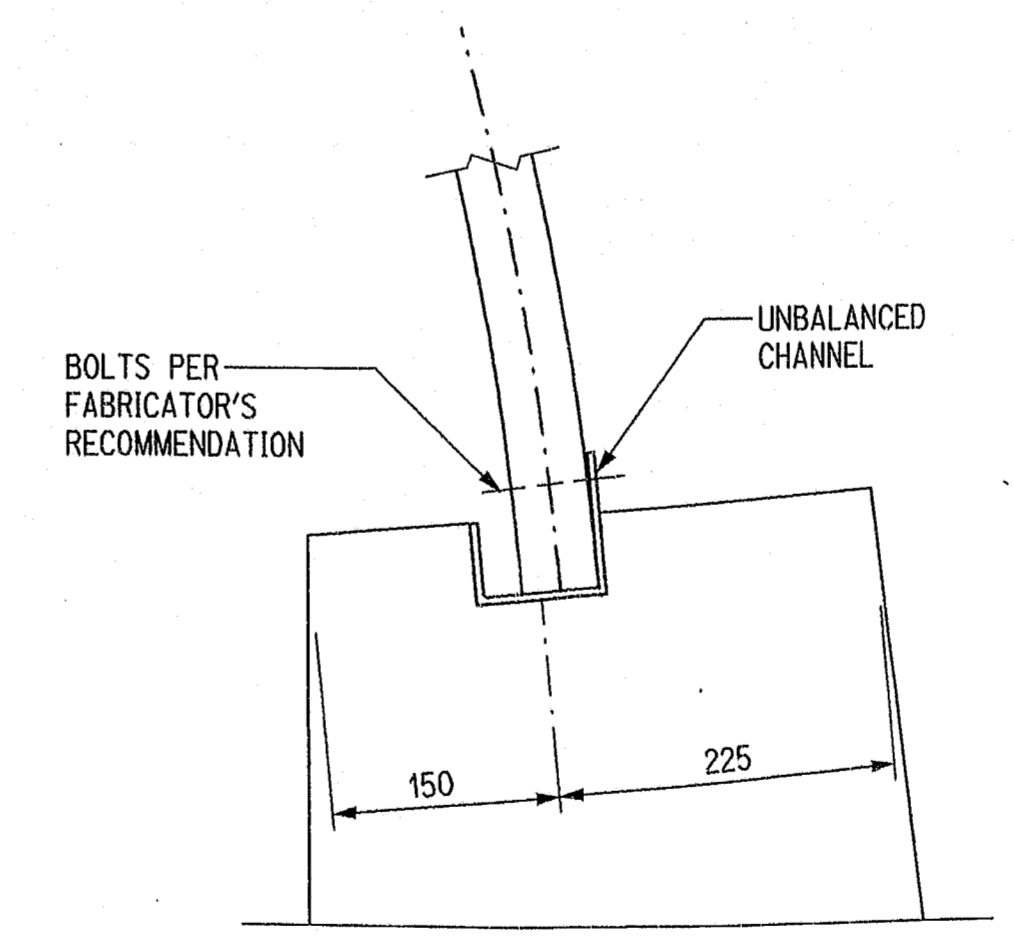
| ITEM NO. | DISCRIPTION | QUANTITY | UNIT |
|----------|--|----------|----------------|
| 203.25 | GRANULAR BORROW | 55 | m ³ |
| 206.061 | STRUCTURAL EARTH EXCAVATION | | |
| | DRAINAGE AND MINOR STRUCTURES | 40 | m ³ |
| 502.21 | STRUCTURAL CONCRETE, ABUTMENTS AND RETAINING WALLS | 10 | m ³ |
| 509.12 | STEEL STRUCTURAL PLATE ARCH | 1 | LS |

| | |
|-----------------|-------|
| DATE | 07/02 |
| BY | DPD |
| DESIGN-DETAILED | JSS |
| CHECKED | JMA |
| PERSONS | |
| FIELD CHANGES | |

PLANS



SECTION A-A
SCALE: 1:25



DETAIL A
SCALE: 1:5

STATE OF MAINE
DEPARTMENT OF TRANSPORTATION

**PLATE ARCH
PLAN & DETAILS**

LISBON
ROUTE 125

SCALE
(In meters)
AUGUSTA, MAINE

135-13

SHEET 1 OF 1

LISBON 125