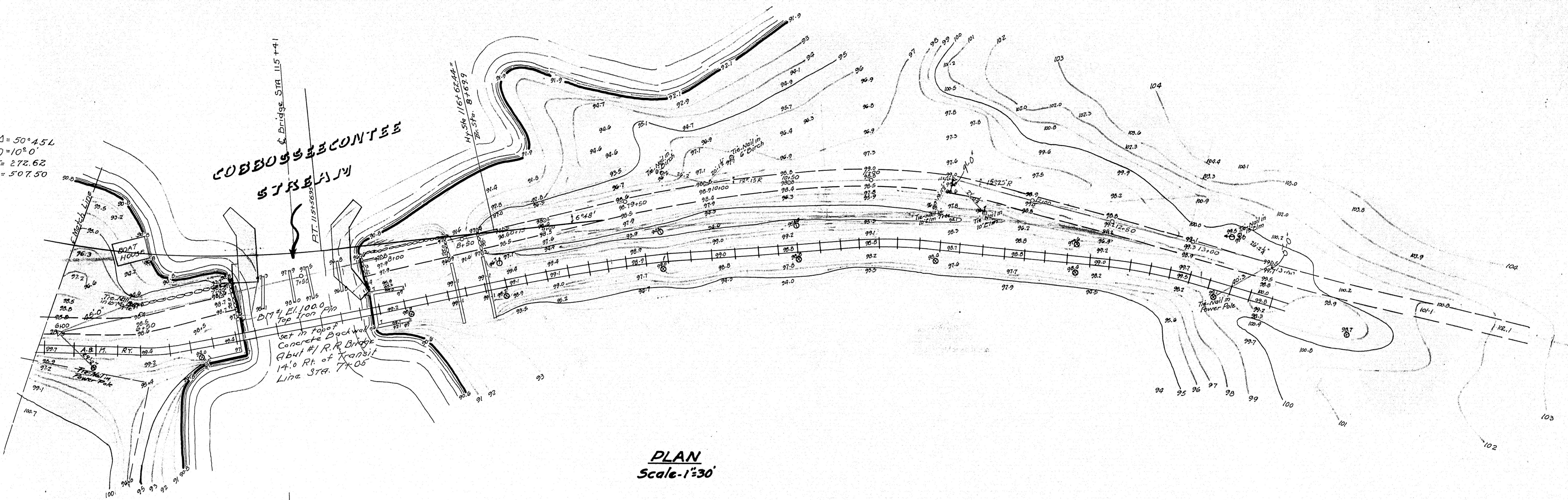
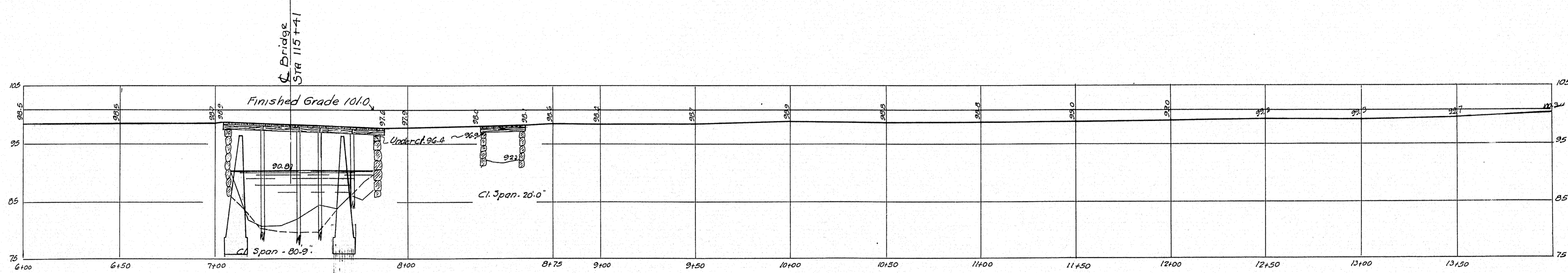


$\Delta = 50^\circ 45.4$
 $D = 10^\circ 0'$
 $T = 272.62$
 $L = 507.50$



PLAN
 Scale - 1"=30'



PROFILE
 Scales - H. 1"=30', V. 1"=10'

Note - Stone Fill to El. 95.0
 12" Gravel surface on Approaches.
 Warp Approach sections to meet
 Highway requirements

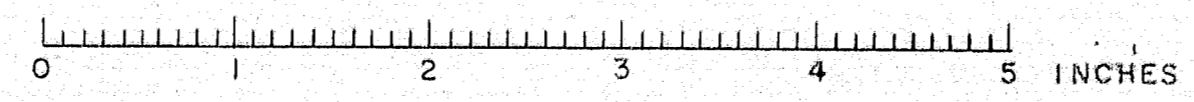
MAIN BRIDGE
 Substructure - Abutment No. 1 of field stone in poor condition. Abutment No. 2 of roughly split stone, fair. Four timber bents, poor. Partly decayed. Timber bridge seats, poor.
 Superstructure - Six timber stringers to each span. Poor. 4" Planking, poor.
 Clear Span - Highway Bridge 80.9'.
 Railway Bridge 81.5'.

OVERFLOW SPAN
 Substructure - Abut. #1 has caved in. Abut. #2 is bulging. Both abutments of roughly split stone. Timber bridge seats, poor.
 Superstructure - Six log stringers, in fair condition. 3" planking, poor.
 Clear Span - Highway Bridge - 20.0'.
 Railway Bridge - 19.3'.

GENERAL
 High Water Elev. - About 94.5. (Local Information)
 Stream Bed: Probably rock and gravel covered with four or five feet of silt. (Air soundings - could not be made). Maximum penetration 5.0 feet.

MAINE HIGHWAY COMMISSION
 BRIDGE DIVISION
BABCOCK BRIDGE
 OVER
COBOSSEECONTEE STREAM
 BETWEEN THE TOWNS OF
WEST GARDINER & LITCHFIELD
MENNEBEC CO., MAINE
 SURVEY PLAN PART 'B'
 SHEET 1 OF 3 AUGUST 7, 1929. Jan. 16, 1929.

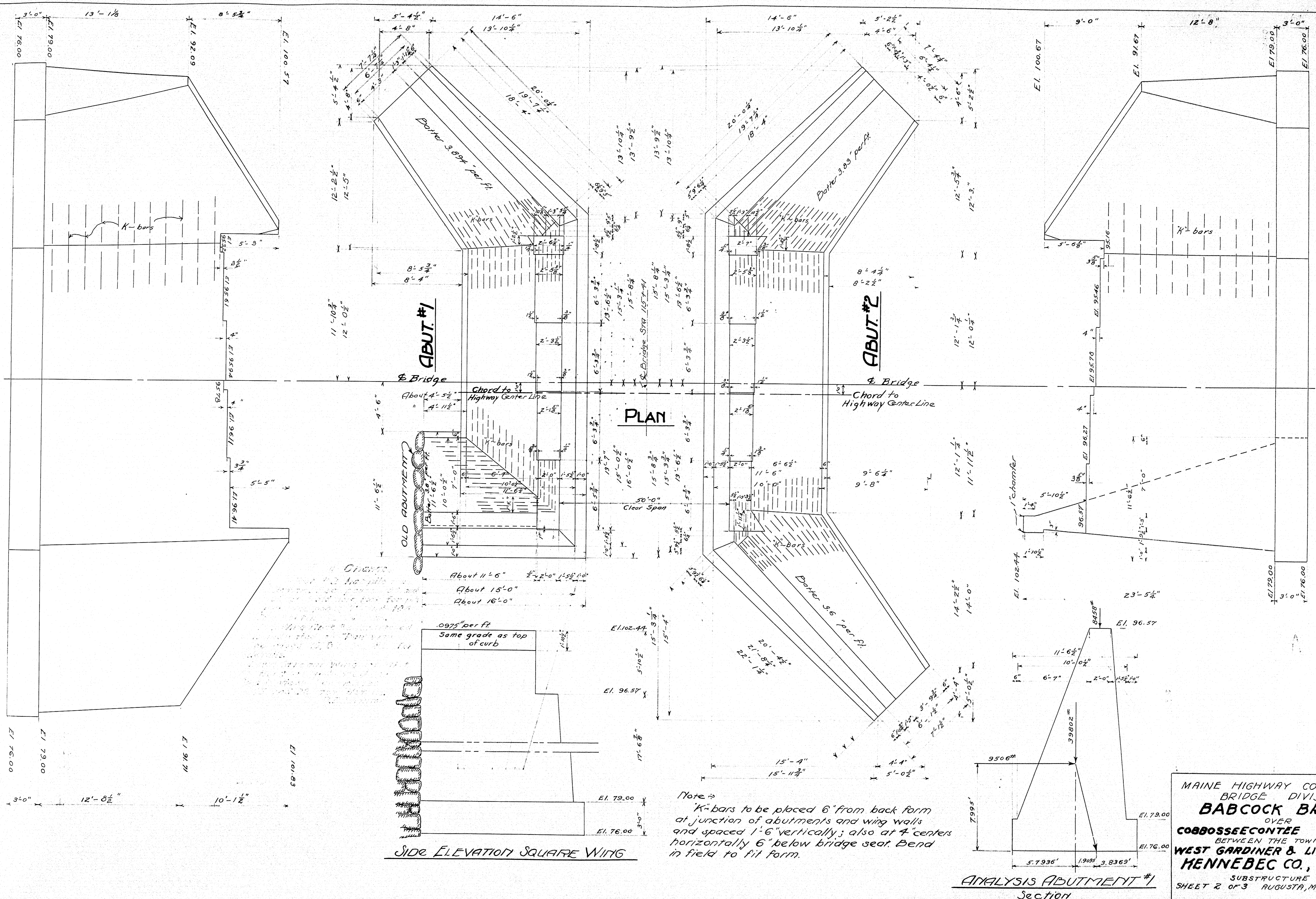
Survey by Thomas
 Plot by Fairer.



PART REAR ELEVATION #1 ABUT.

HALF FRONT ELEVATION #2 ABUT.

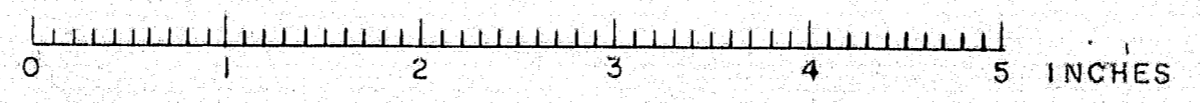
PART FRONT ELEVATION #1 ABUT. HALF REAR ELEVATION #2 ABUT.

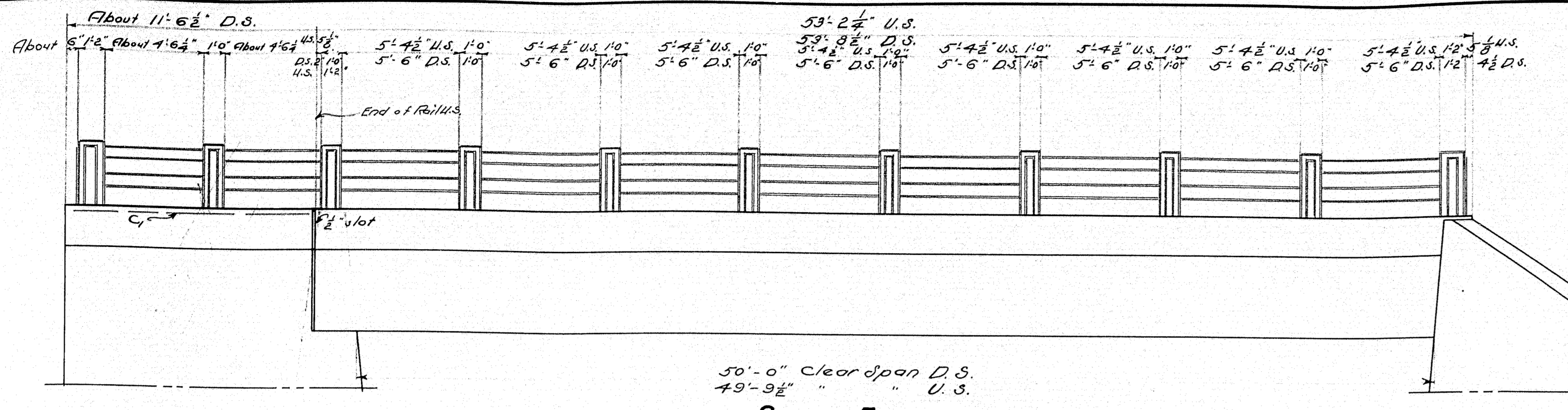


Note: K-bars to be placed 6" from back form at junction of abutments and wing walls and spaced 1'-6" vertically; also at 4' centers horizontally 6" below bridge seat. Bend in field to fit form.

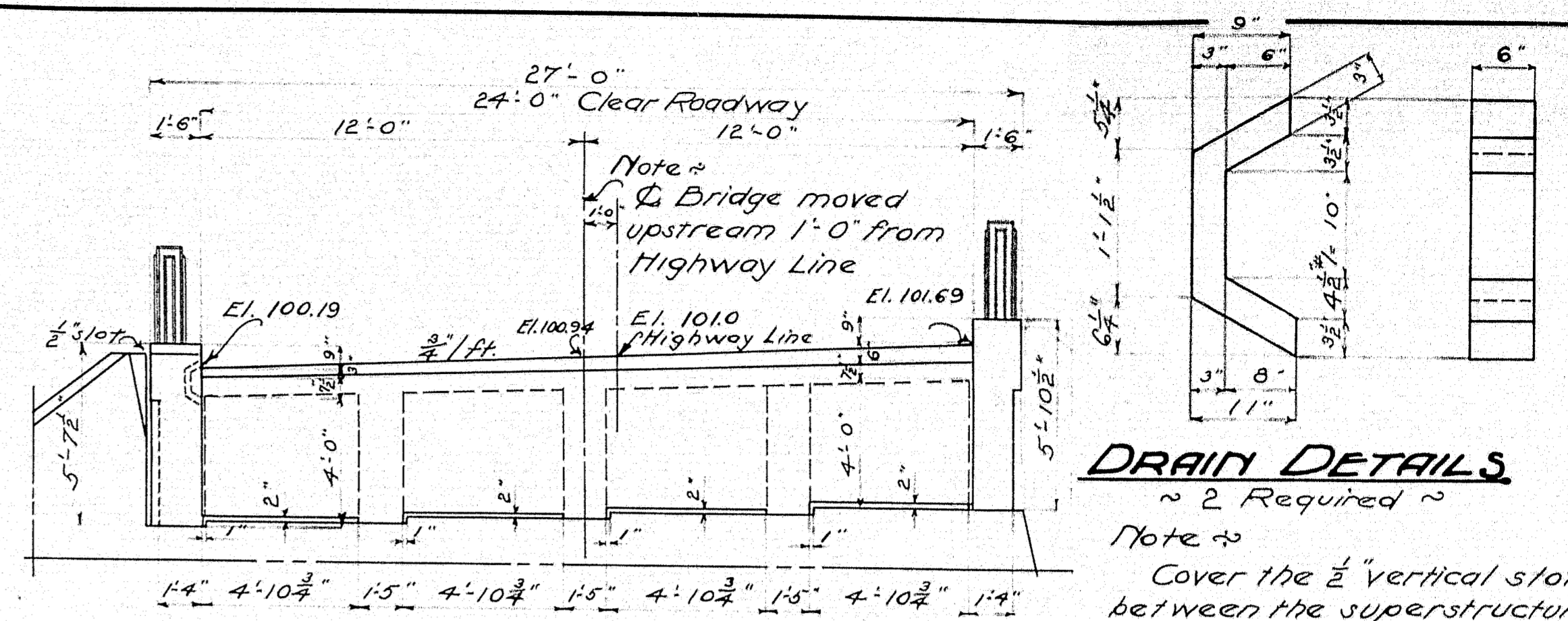
MAINE HIGHWAY COMMISSION
 BRIDGE DIVISION
BABCOCK BRIDGE
 OVER
COBBOSEECONTEE STREAM
 BETWEEN THE TOWNS OF
WEST GARDINER & LITCHFIELD
MENNEBEC CO., MAINE
 SUBSTRUCTURE
 SHEET 2 OF 3 AUGUSTA, ME. May 5, 1931.

Designed by - Hamilton
 Traced by - Corbin
 Checked by - Bradford





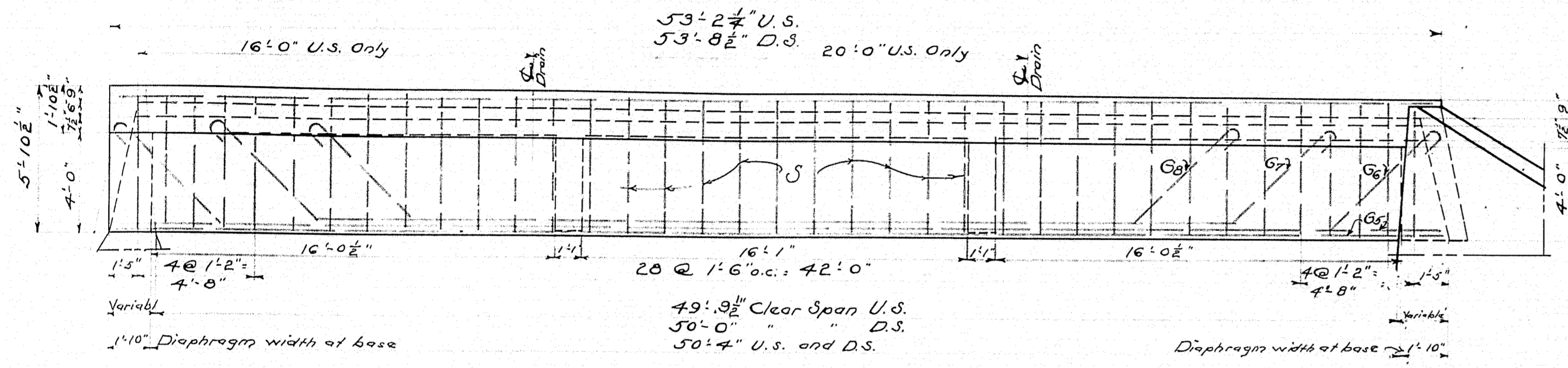
SIDE ELEVATION



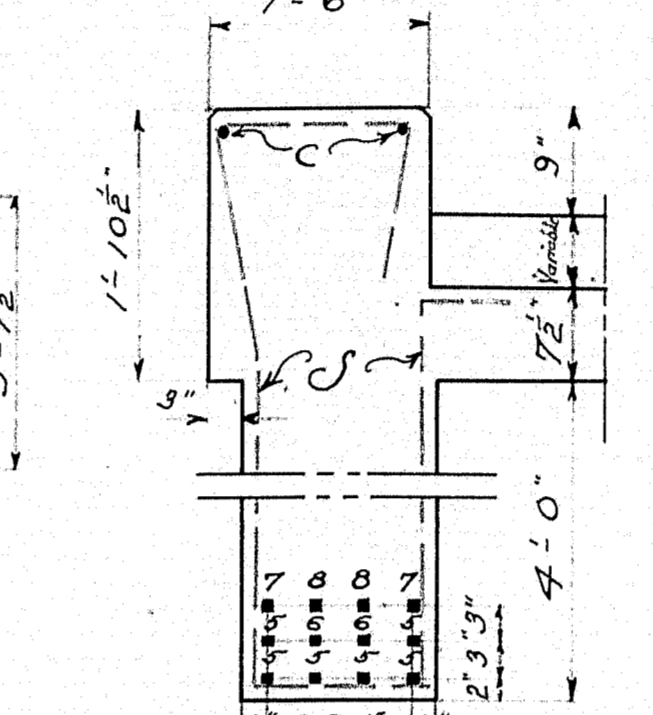
END ELEVATION OF SUPERSTRUCTURE #1 ABUT.

RAIL DETAILS

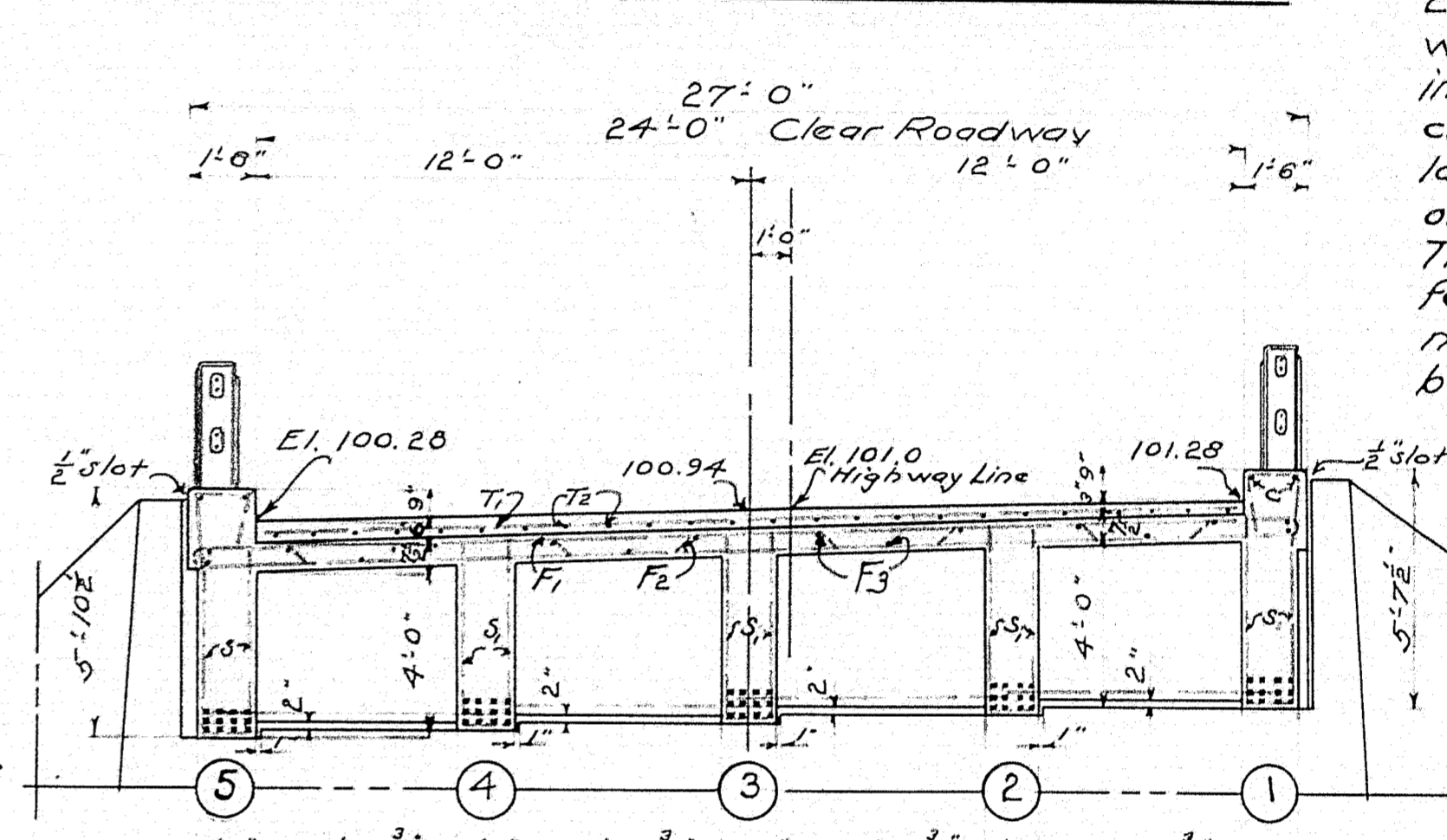
Note: ~ 2 Required ~
 Note: Cover the 1/2" vertical slots between the superstructure and the wing walls, and the 2" opening on the back side with two layers of heavy roofing felt. Coat surface of concrete and back side of each layer as applied with hot tar or asphalt. Felt to be 10' wide. The area to be covered by the felt is to be recessed 1/2" by nailing thin strips to the forms before the concrete is placed.



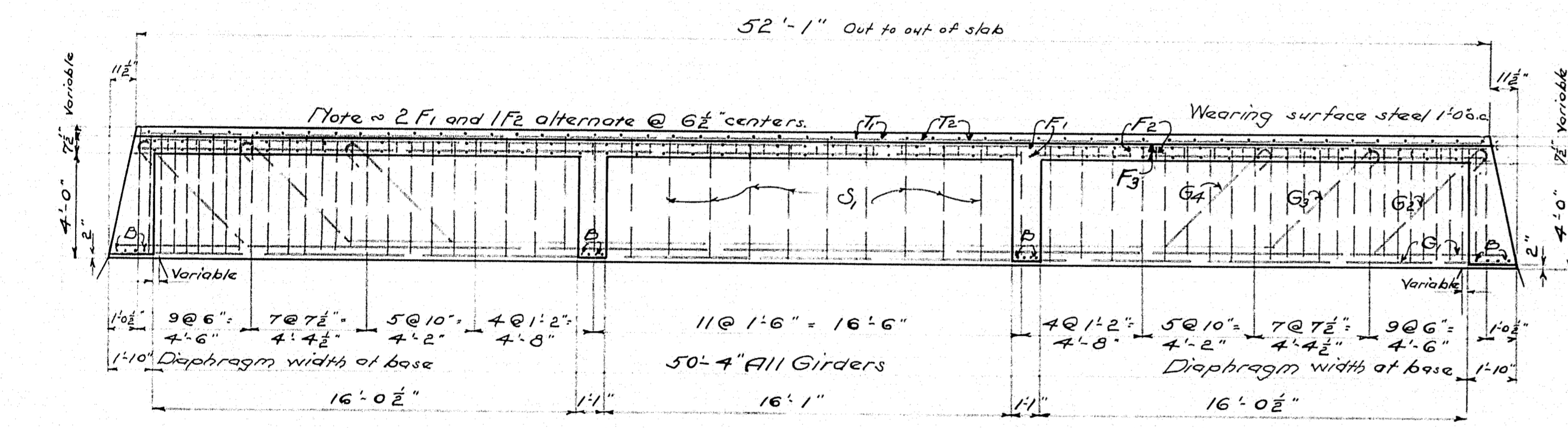
EXTERIOR GIRDERS



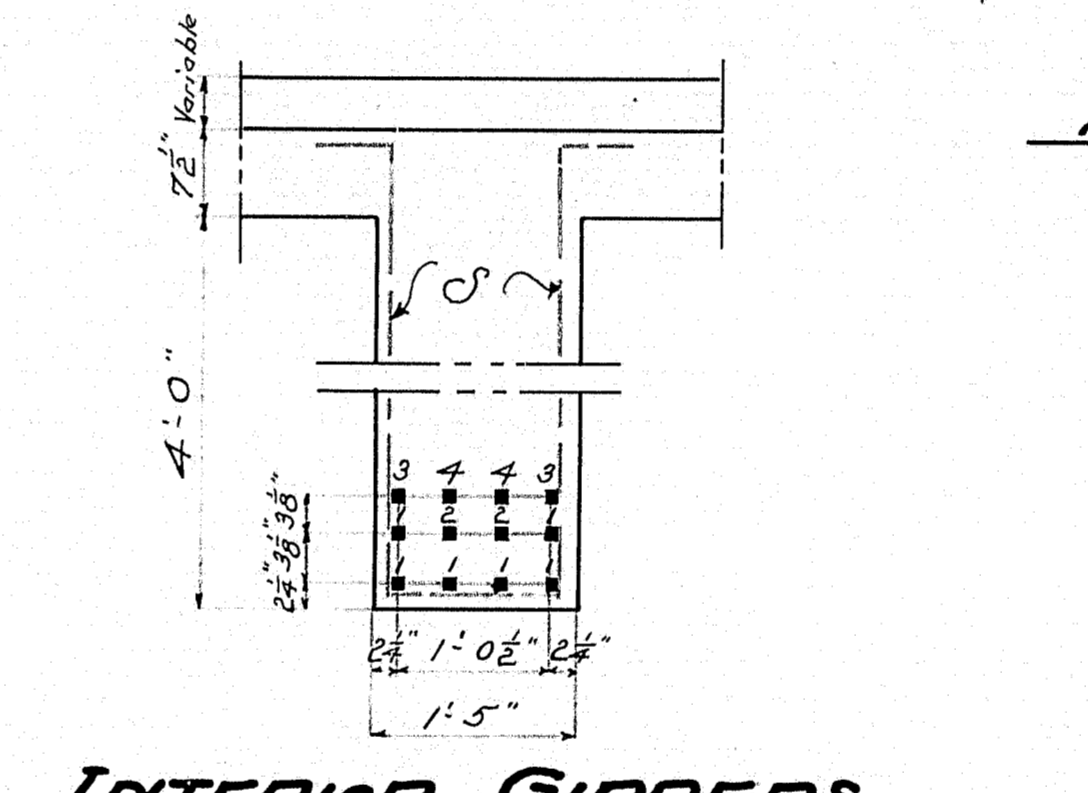
EXTERIOR GIRDERS



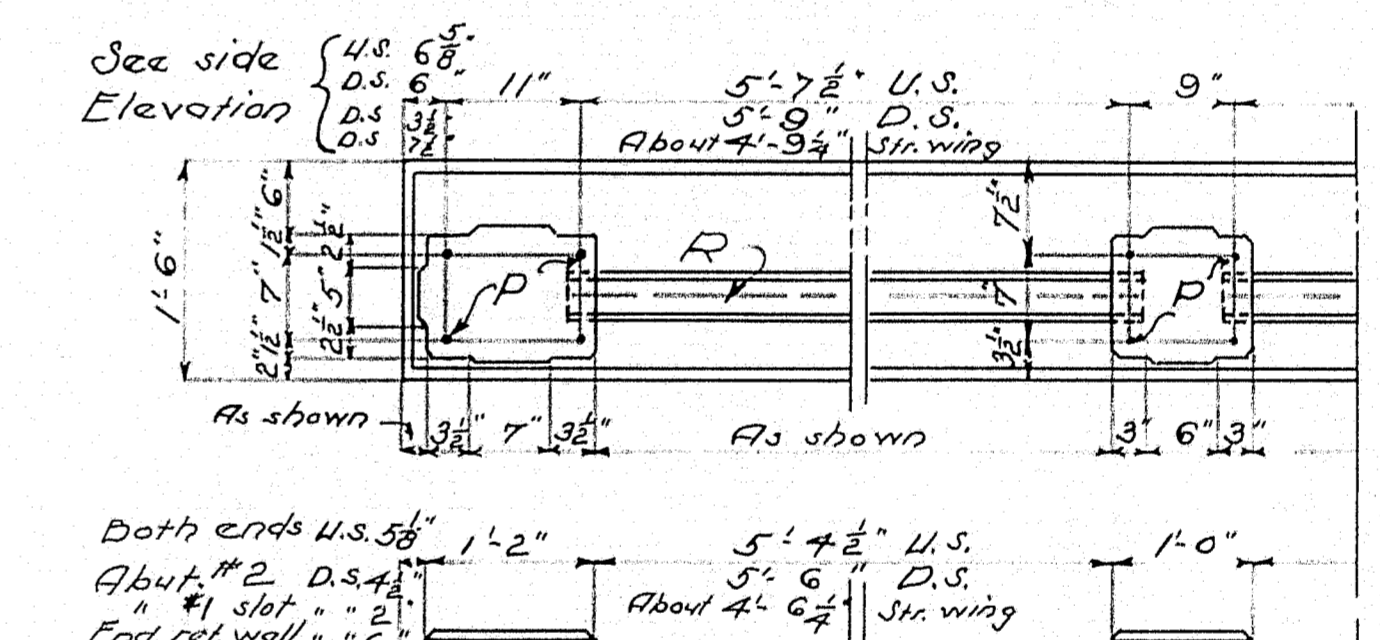
TRANSVERSE SECTION SUPERSTRUCTURE AT FACE BRIDGE SEAT #2 ABUT.



LONGITUDINAL SECTION ~ INTERIOR GIRDERS



INTERIOR GIRDERS

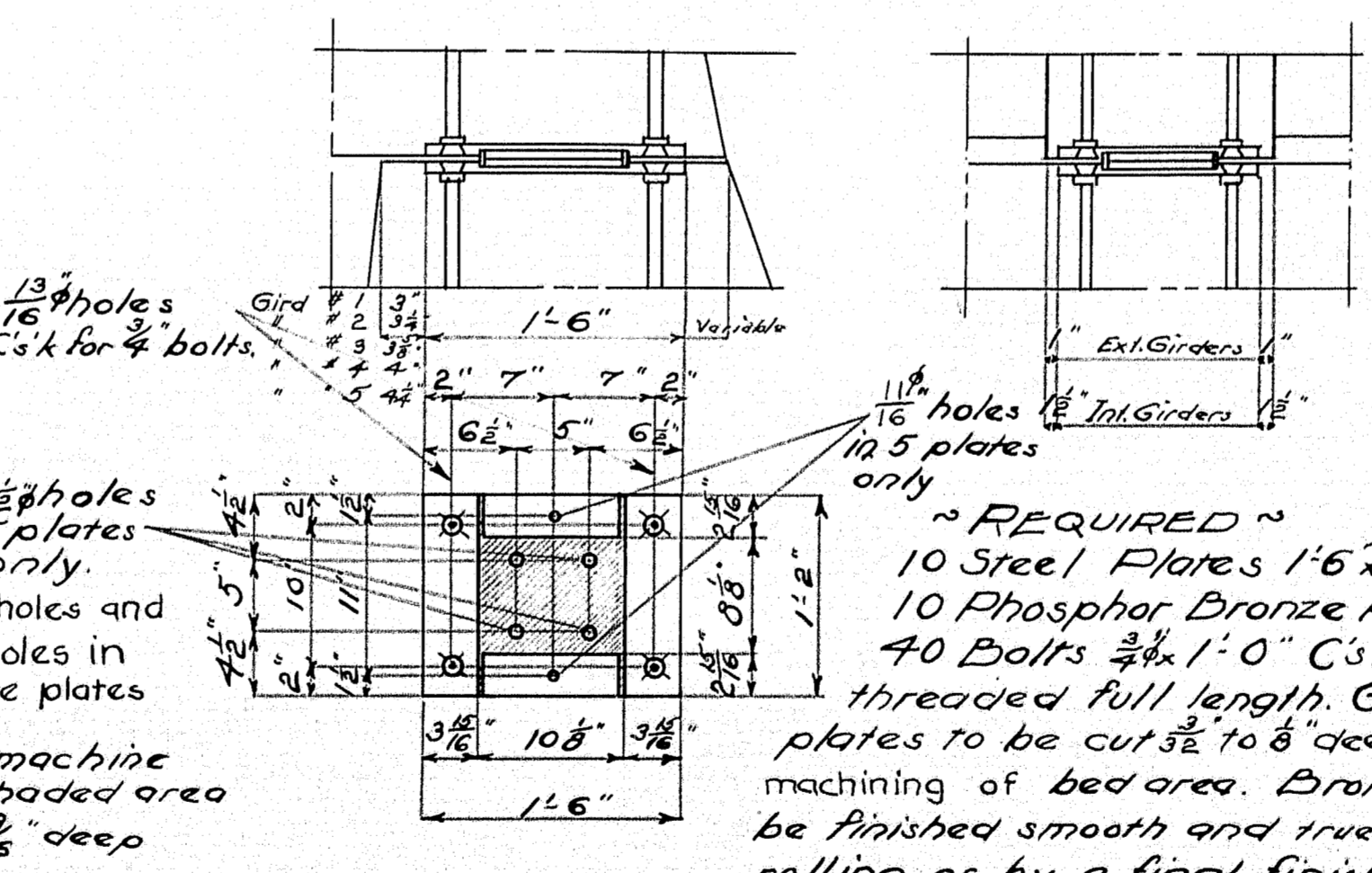


RAIL BAR SCHEDULE			
Bar	Length	No. Req'd	Steel Mark
U.S.	5'-9 1/2"	16	R1
D.S.	5'-11"	16	R2
Rail Well	1'-1/2"	4	R2

Note: Exact length of bars on retaining wall to be determined in field.

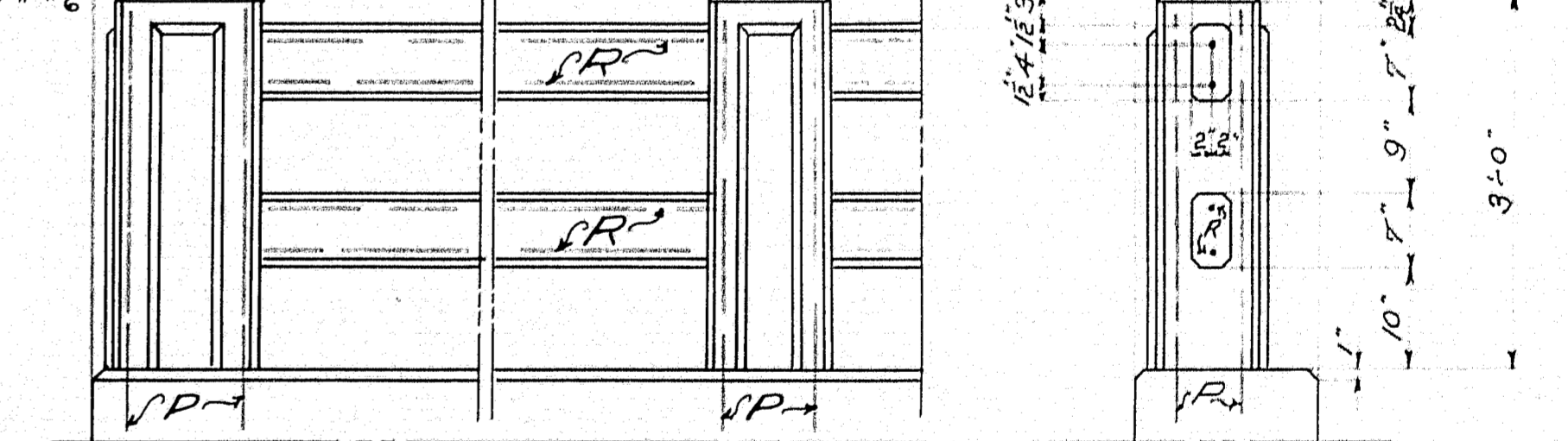
BENT BARS		STRAIGHT BARS			
MARK	SIZE	NO. REQ'D	LENGTH	LOCATION	
F1	3/8"	36	26'-9"	Slab	
F2	3/8"	18	51'-10"	Int. Girder	
G1	1/2"	12	53'-8"	Ext. Girder	
G2	1/2"	12	53'-8"	Diaphragms	
C	1"	64	7'-5"	Curb	
C1	1"	4	53'-0"	Str. Wing Curb	
P	3/8"	80	4'-0"	Posts	
R1	3/8"	32	5'-10"	Rails D.S.	
R2	3/8"	32	5'-8"	U.S.	
T1	3/8"	53	23'-10"	Str. Wing	
T2	3/8"	24	51'-11"	Wearing Surface	
K	3/8"	66	8'-0"	Abuts.	

Note: All steel to be plain bars of structural grade. All dimensions to center line of bars.



BEARING PLATE DETAILS

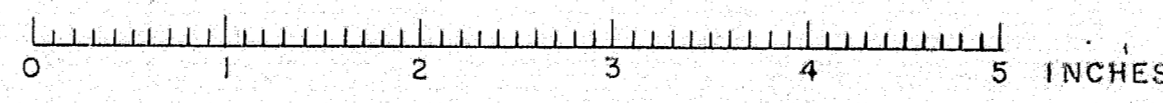
Notes: Expansion Plates will be furnished by Commission. F.O.D. nearest R.R. Station.

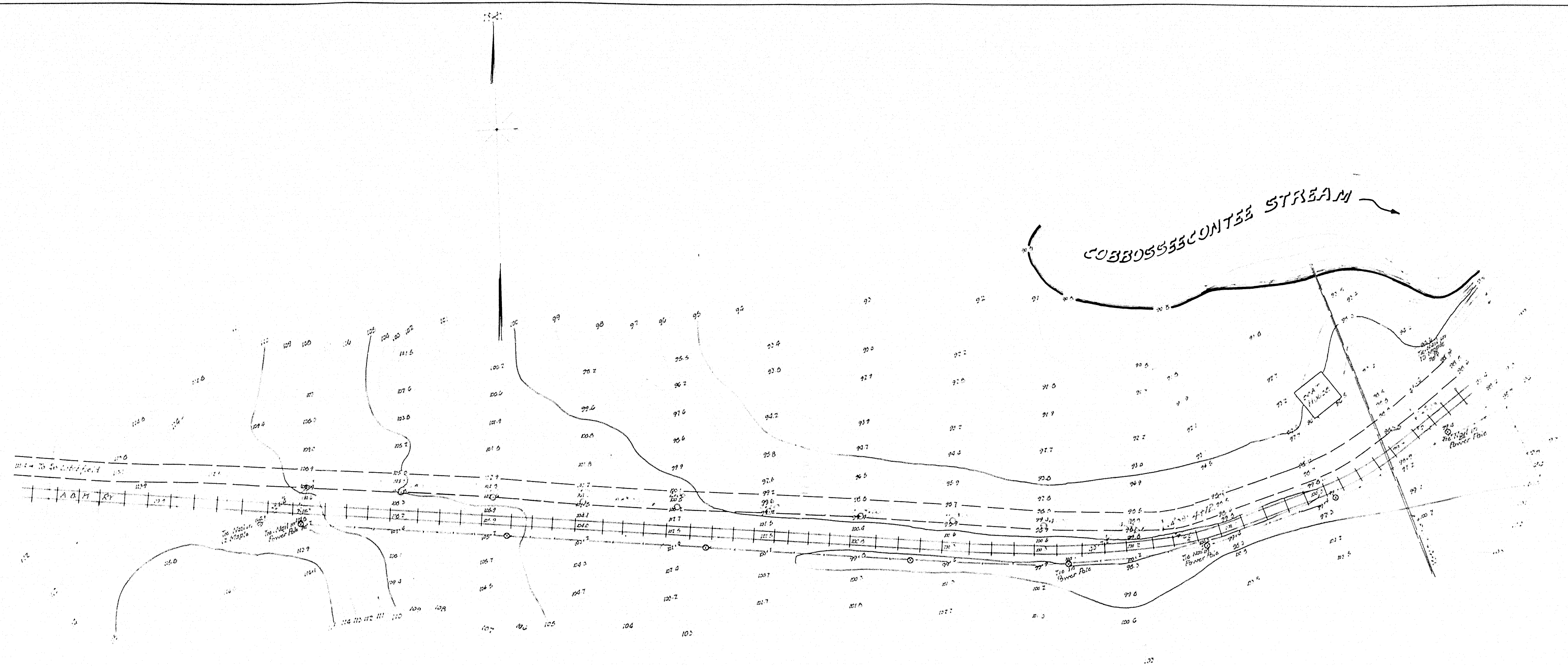


RAIL DETAILS

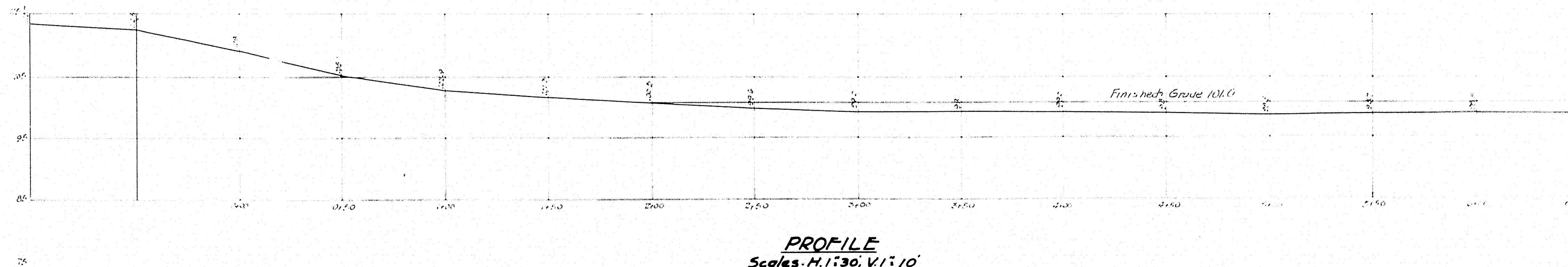
Curb and slab to be cast together. Steel for posts to be set in curbs. Precast rail bars in lengths of 5'-9 1/2", 5'-11", 7'-11 1/4". Place rail bars in position with ends projecting into post forms 2 1/2". Wrap end G with two thicknesses of light roofing felt. Felt in ends and when post forms are removed cut away all felt exposed. Panels on posts to be 3/4" thick. Chamfer all exposed edges of concrete 1/2" unless otherwise indicated.

MAINE HIGHWAY COMMISSION
 BRIDGE DIVISION
BABCOCK BRIDGE
 OVER
COBBOSECONTEE STREAM
 BETWEEN THE TOWNS OF
WEST GARDNER & LITCHFIELD
KENNEBEC CO., MAINE
 SUPERSTRUCTURE
 SHEET 3 of 3 AUGUST 17, 1931.





PLAN
Scale - 1" = 30'

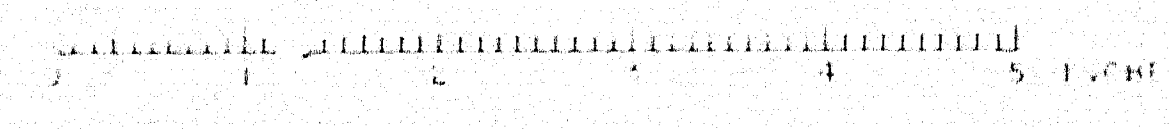


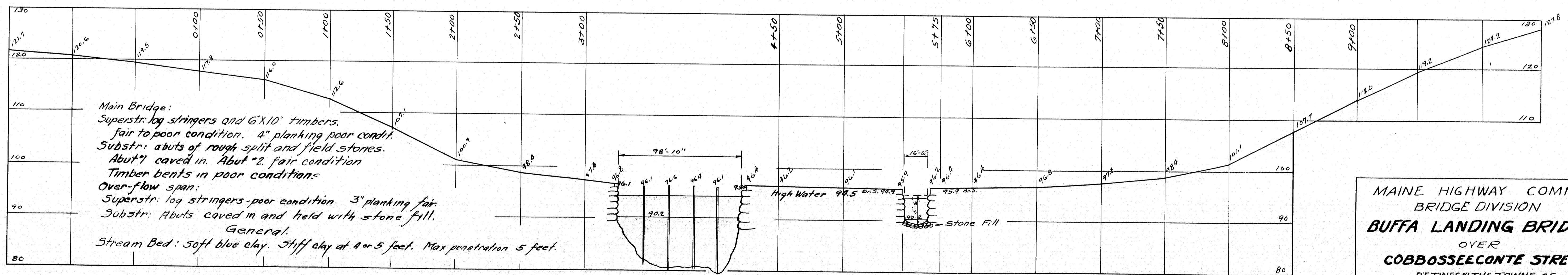
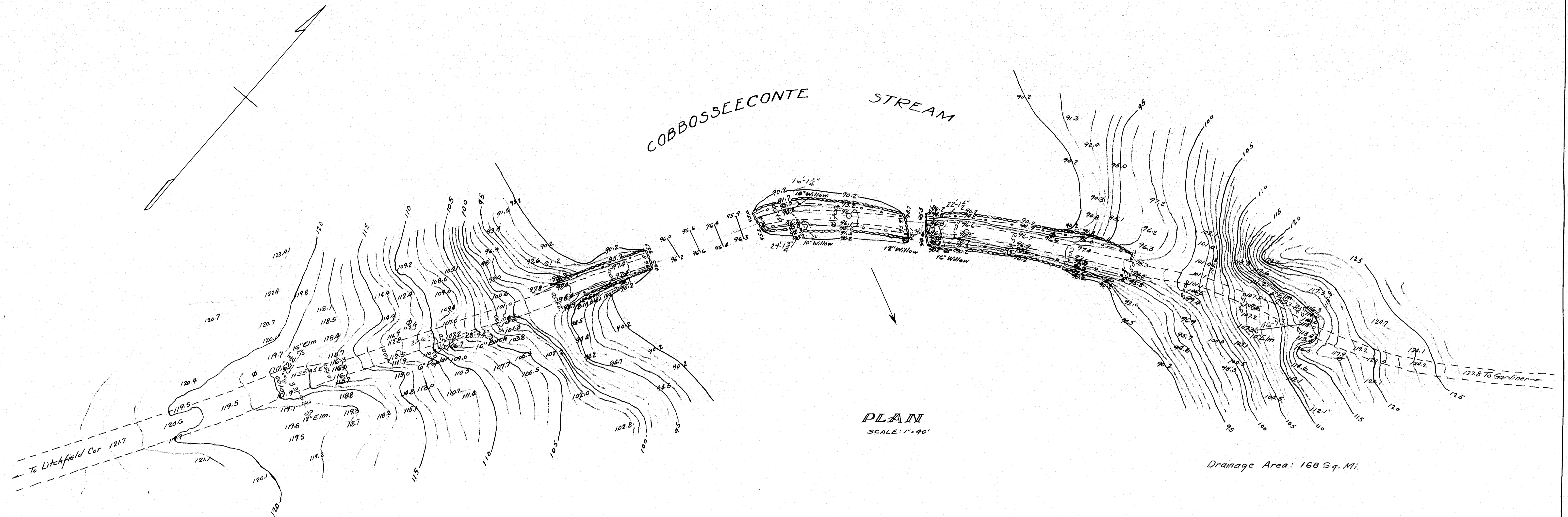
PROFILE
Scale - H. 1" = 30', V. 1" = 10'

MAINE HIGHWAY COMMISSION
 PUBLIC DIVISION
BABCOCK BRIDGE
 OVER
 COBBOUSECONTÉE STREAM
 BETWEEN THE TOWNS OF
 WEST GARDINER & LITCHFIELD
 KENNEBEC CO., MAINE
 SURVEY PLAN - PART 'A'
 SHEET 1 OF 2 AUGUSTA, ME. Jan. 15, 1929.

Survey by Thomas
 Plot by Parra

25-191



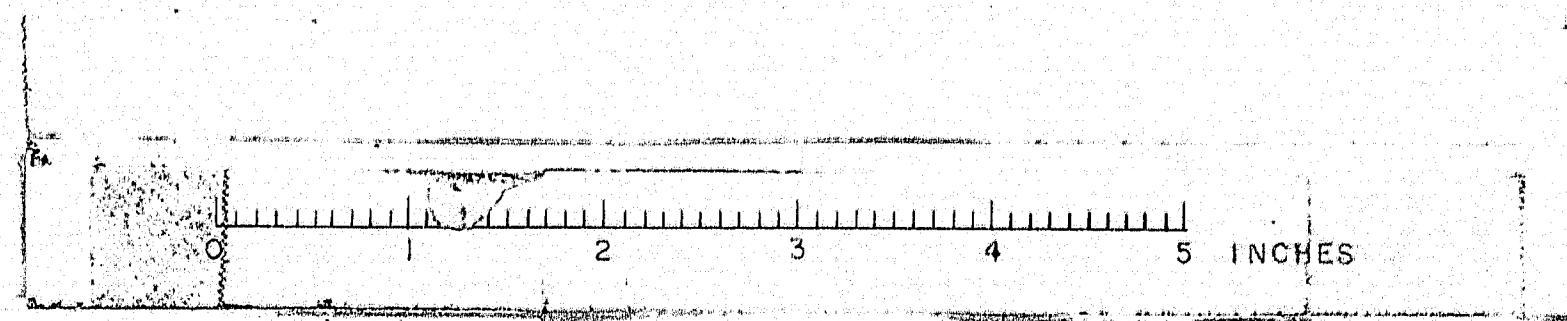


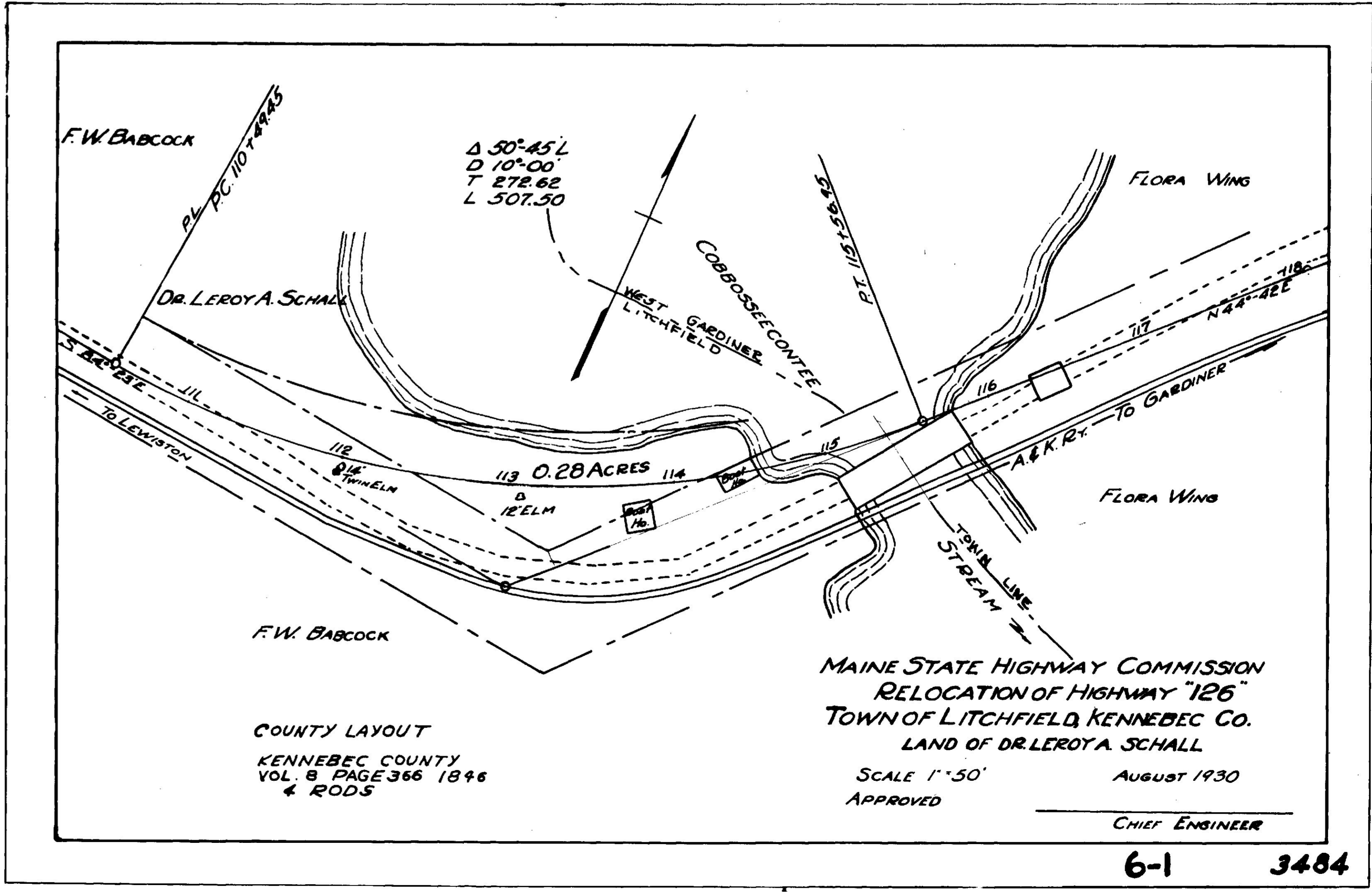
Main Bridge:
 Superstr: log stringers and 6"X10" timbers.
 fair to poor condition. 4" planking poor condit.
 Substr: abuts of rough split and field stones.
 Abut #1 caved in. Abut #2 fair condition
 Timber bents in poor condition.
Over-flow span:
 Superstr: log stringers poor condition. 3" planking fair.
 Substr: Abuts caved in and held with stone fill.
General:
 Stream Bed: soft blue clay. Stiff clay at 4 or 5 feet. Max penetration 5 feet.

MAINE HIGHWAY COMM
 BRIDGE DIVISION
BUFA LANDING BRIDGE
 OVER
COBBOSEECONTE STREAM
 - BETWEEN THE TOWNS OF -
 WEST GARDINER & LITCHFIELD - KENNEBEC CO.
 SURVEY PLAN
 SHEET 1 of AUGUSTA, ME. FEB. 1, 1929

110-75 DEAD

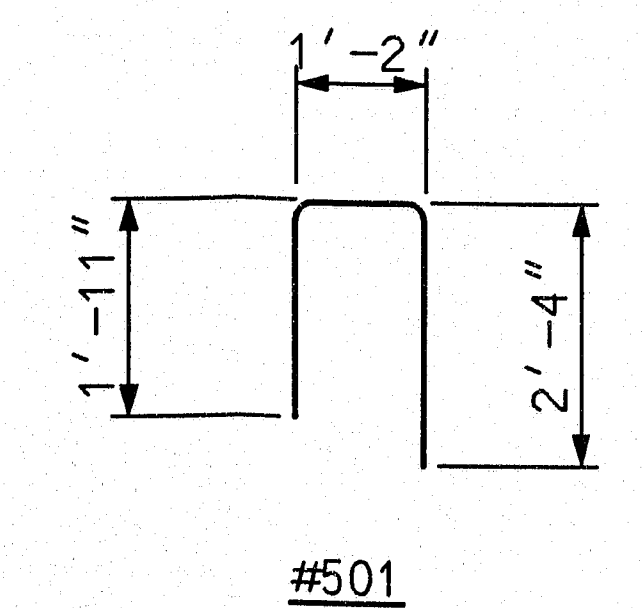
Survey by Thomas
Plotted by F.M.T.



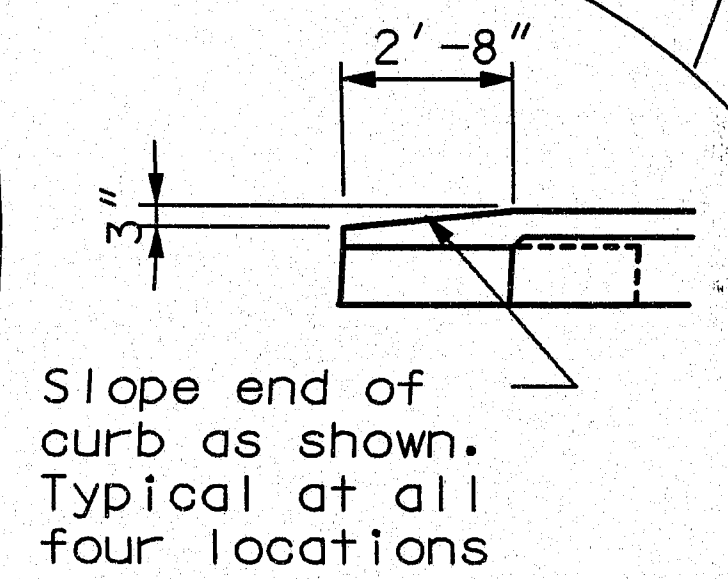
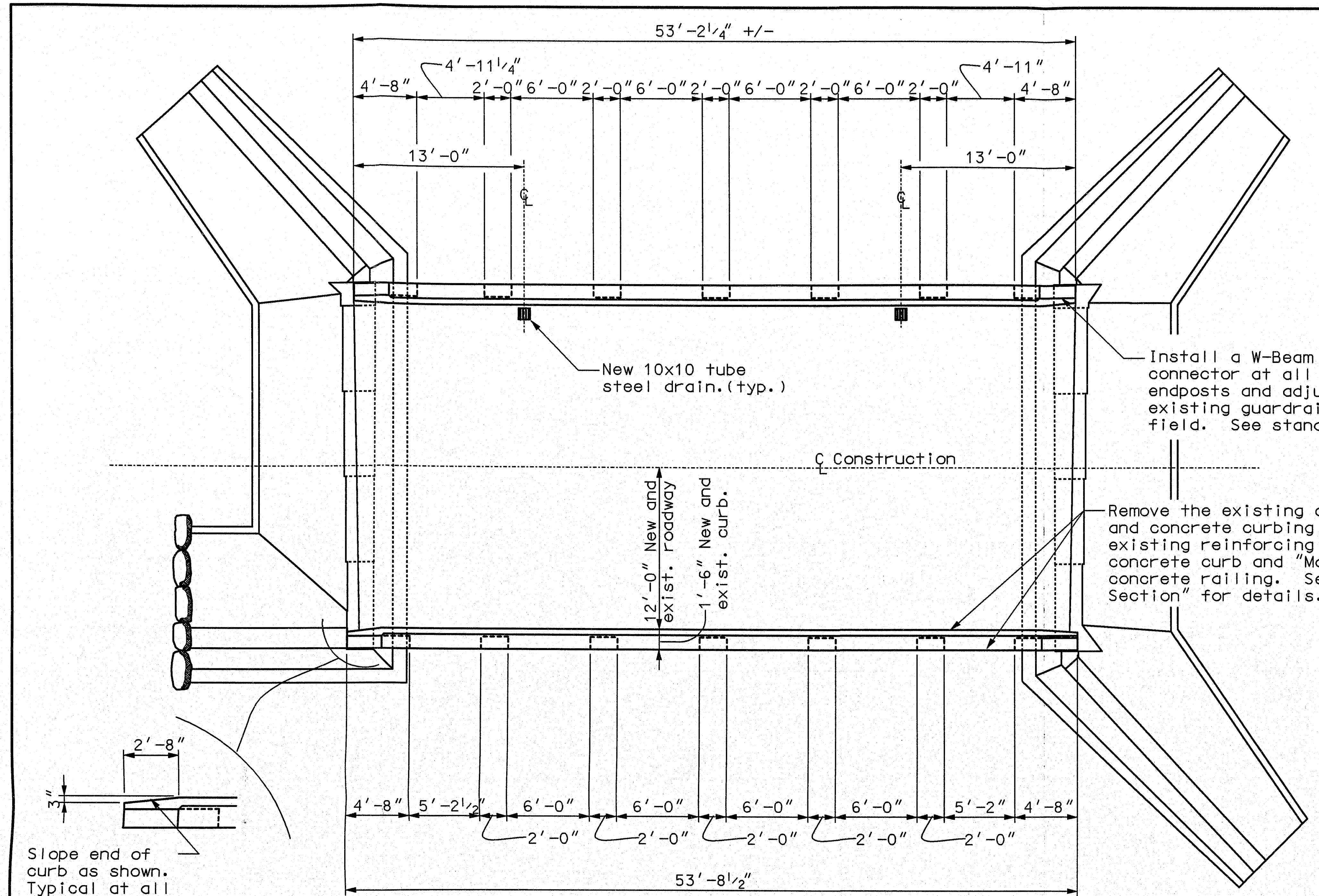


F.W.A. REG. NO.	STATE	PROJECT NUMBER	SHEET NO.	TOTAL SHEETS
1	MAINE	#2029	1	2

REINFORCING STEEL SCHEDULE				
MARK	SIZE	NO.	LENGTH	LOCATION
#500	#5	10	30'-0"	Wingwall dowels
#501	#5	112	5'-5"	Wingwall reinforcing

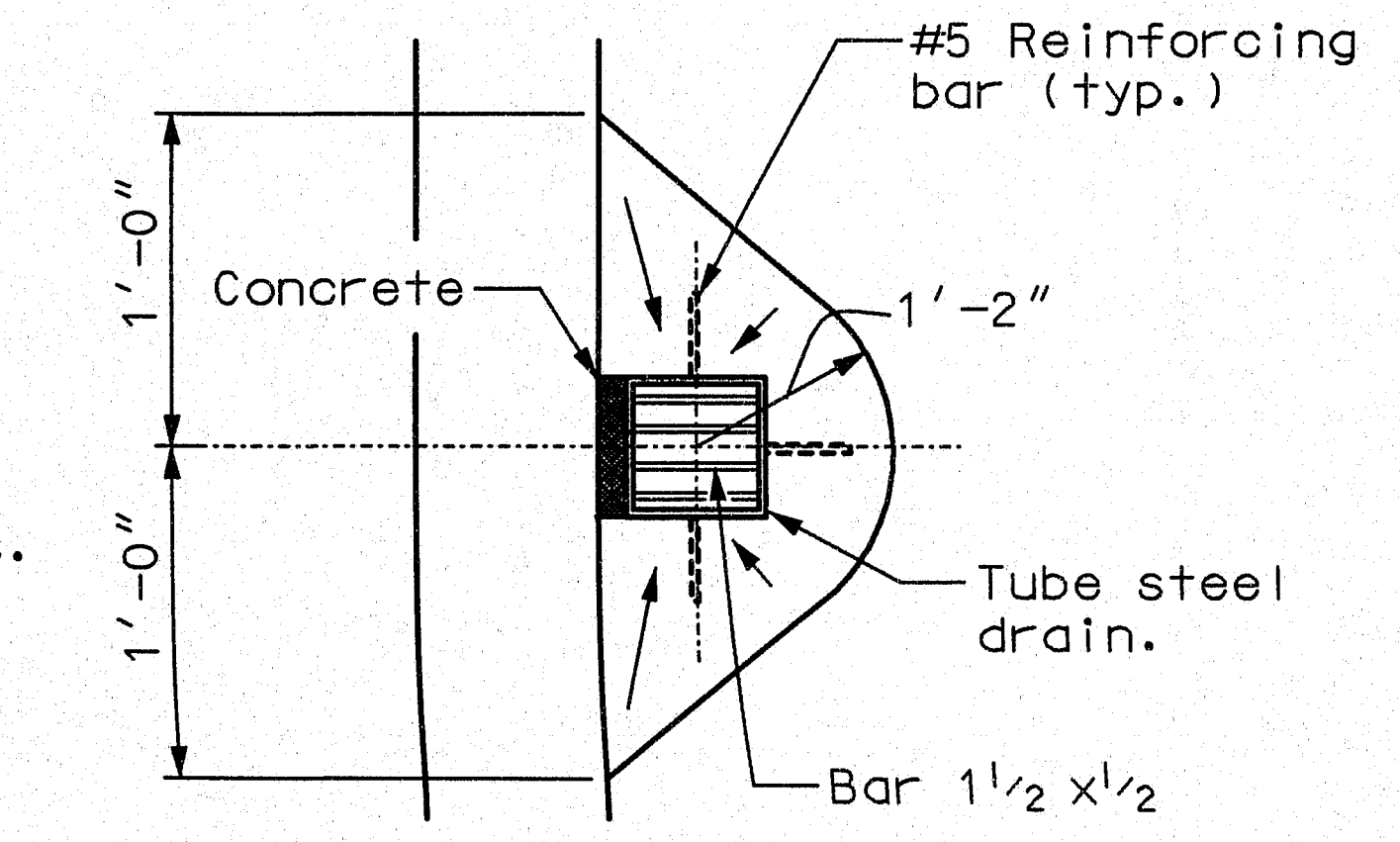


All reinforcing steel to be ASTM A615 grade 60



PLAN VIEW

NOTE: Slope wearing surface 1/2" in the direction of the arrows.



PLAN VIEW DRAIN DETAIL

GENERAL NOTES

- 1...Chamfer all exposed edges of concrete 3/4".
- 2...All reinforcing steel to have a minimum of 2" of cover.

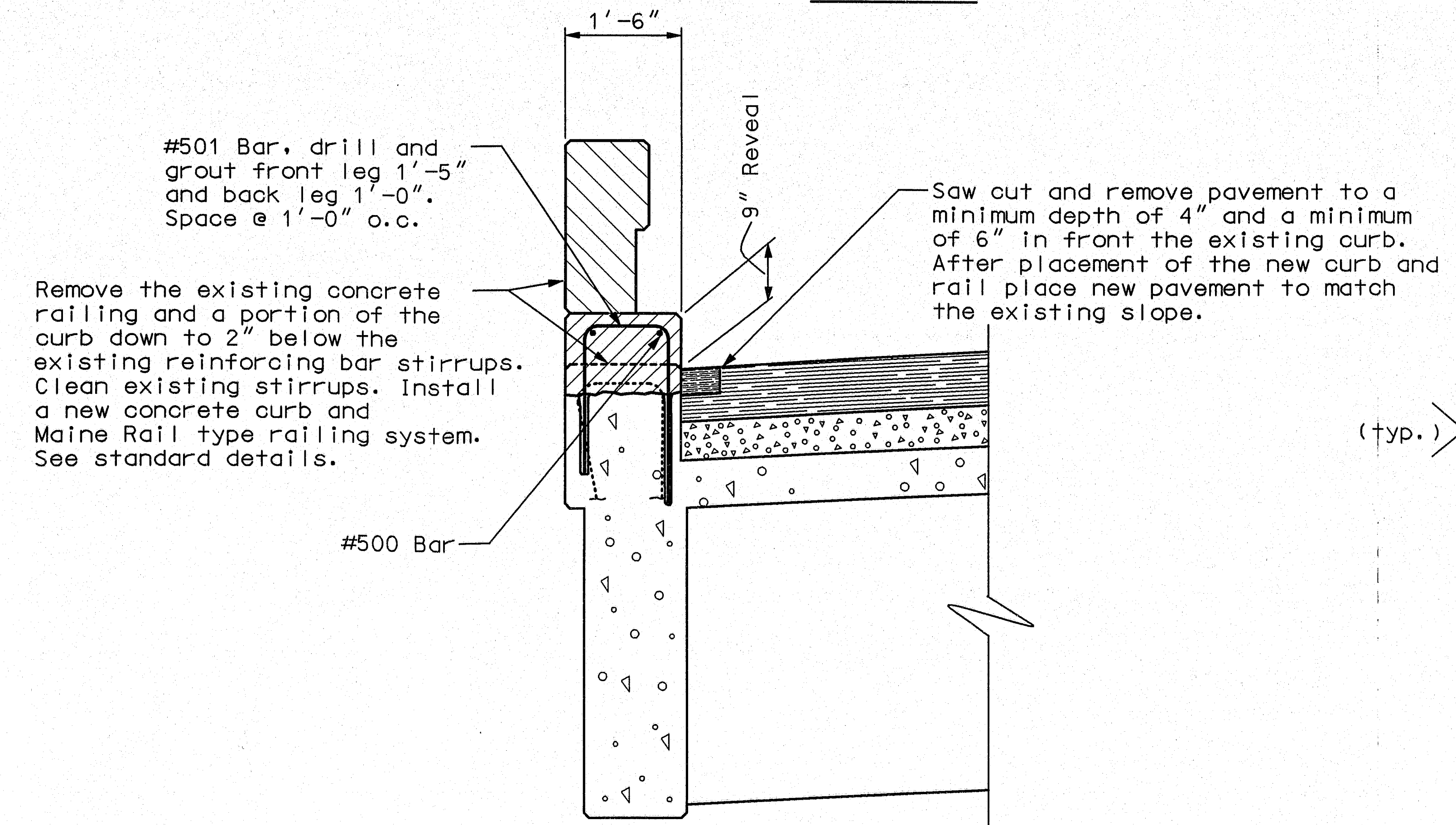
LEGEND

- Existing Concrete (section view)
- Existing Concrete Wearing Surface (section view)
- Existing Pavement (section view)
- New Pavement (section view)
- New Concrete (section view)

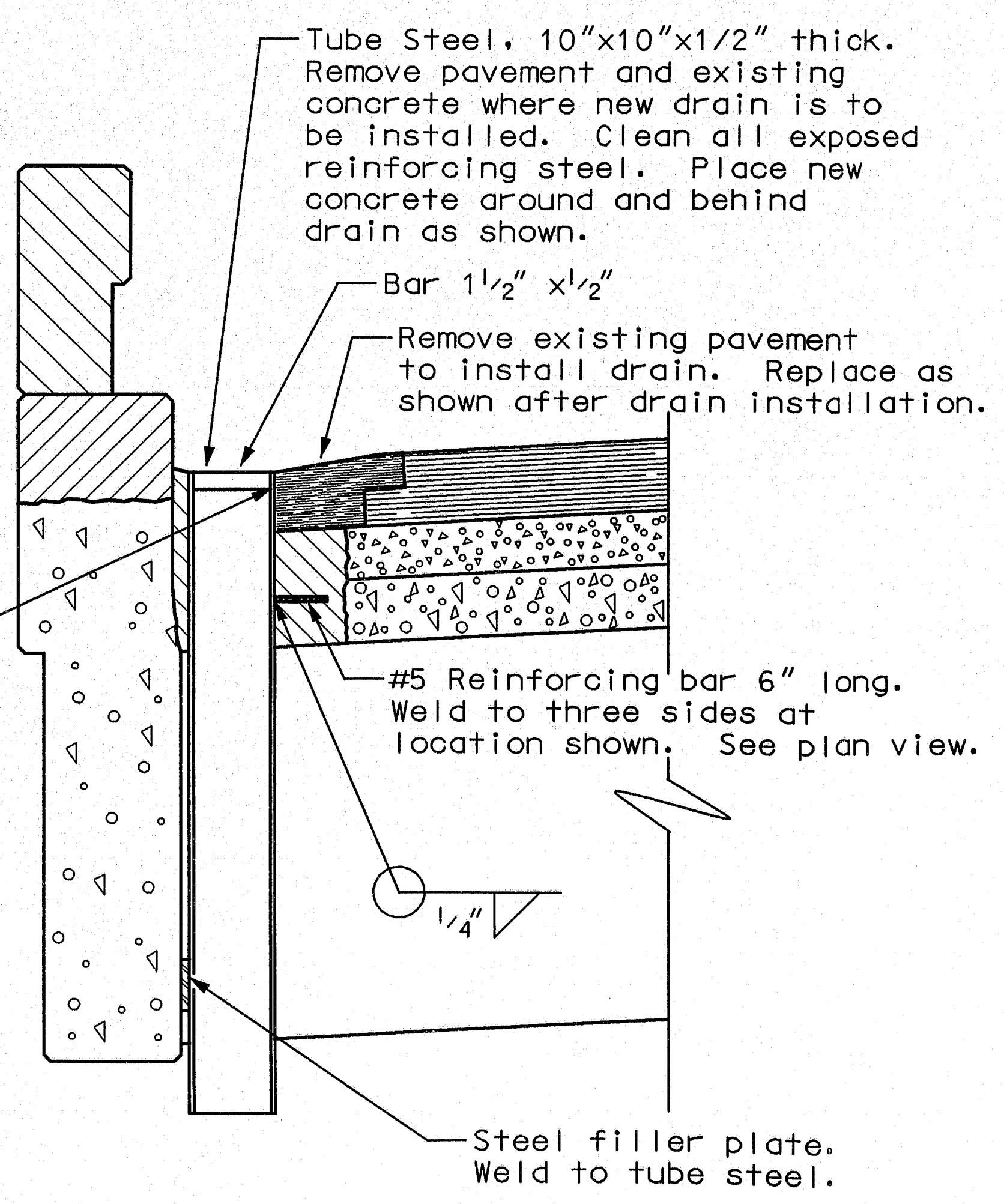
128-69

STATE OF MAINE
DEPARTMENT OF TRANSPORTATION
BABCOCK BRIDGE
OVER
COBBOSEECONTEE STREAM
BETWEEN
WEST GARDINER & LITCHFIELD
KENNEBEC COUNTY
CURB REHABILITATION

PROJECT DESIGN ENGINEER	DATE
BY: L.S. Benner	11/00
DESIGN-DRAWN/FILED	
CHECKED	
REVISIONS	
FIELD CHANGES	
PLANS	



TYPICAL SECTION VIEW OF CURB
(Upstream shown. Downstream is similar)



SECTION VIEW DRAIN DETAIL