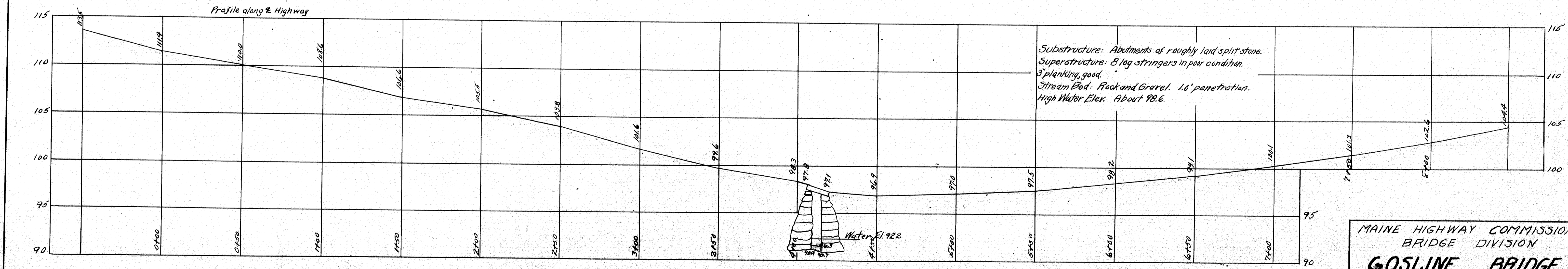


PLAN
SCALE 1"=30'

DRAINAGE AREA 3 sq. mi.

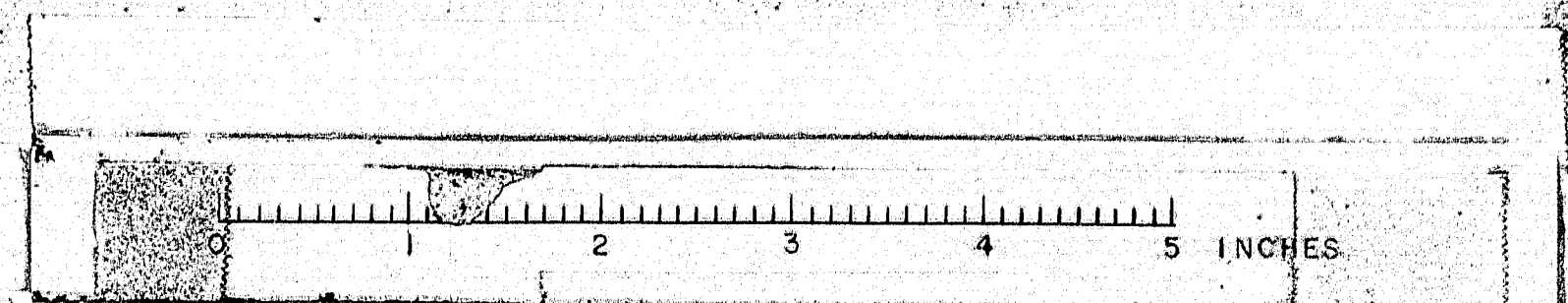


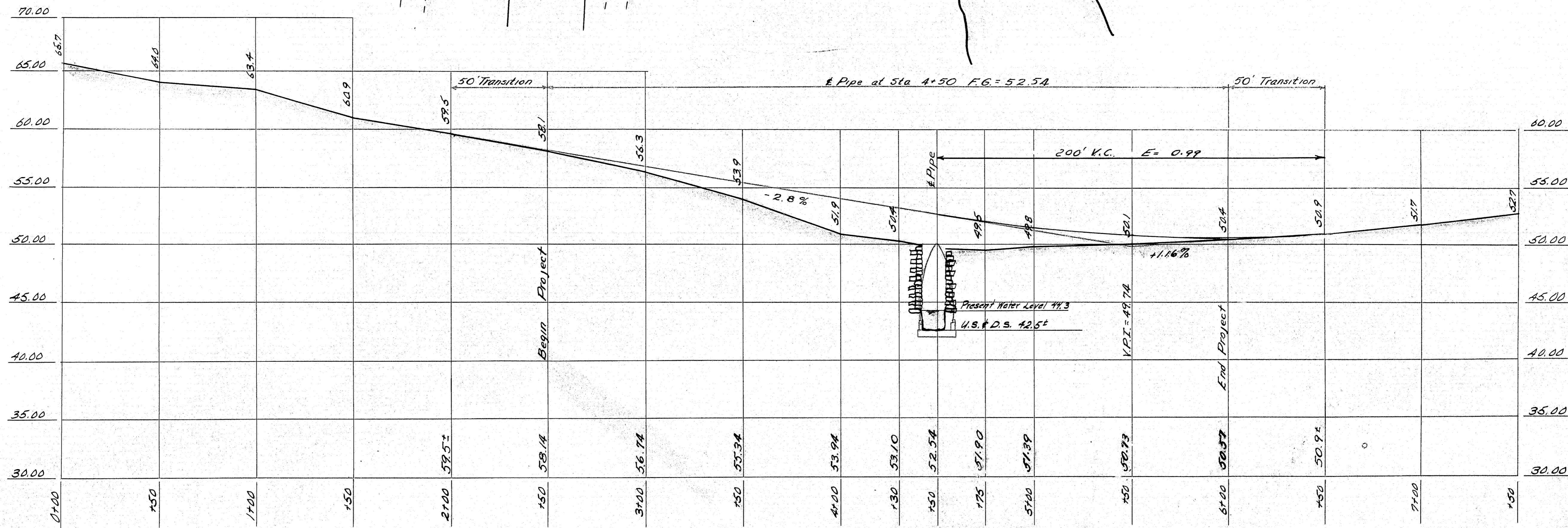
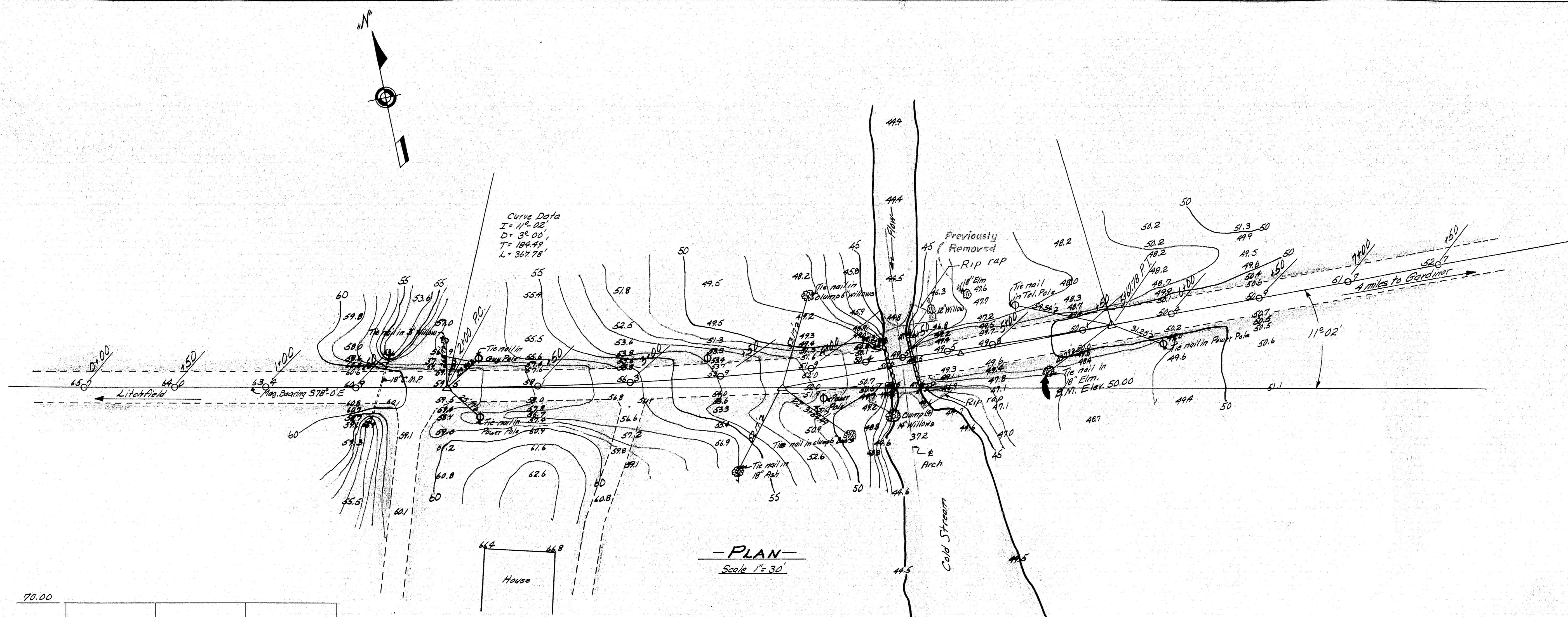
PROFILE
SCALE H-1"=30' V-1"=5'

MAINE HIGHWAY COMMISSION
BRIDGE DIVISION
GOSLINE BRIDGE
OVER
COLD STREAM
IN THE TOWN OF
WEST GARDINER, KENNEBEC CO.
SURVEY PLAN
SHEET 1 OF AUGUSTA, ME. JAN. 23, 1929

Survey by Thomas 12/11/28
Plotted by EFB 1/23/29

110-61





GENERAL NOTES

Existing Superstructure:-
 3" Longitudinal plank on 3" Transverse plank, on 10" x 8" x 10" oak stringers. All rotten.

Existing Substructure:-
 Rough split granite, roughly laid dry. Probably on log grillage.

Stream:-
 Extreme high water over road @ Elev. 50.0. Deep hole below bridge & wider.

Foundation:-
 Sounding #1 - 10' D.S. & brook 4' of water. Rod penetrated through soft blue clay 16.0 below water, to firmer material. (soft).

Approaches:-
 Surface treated gravel, fair condition.

Public Utilities:-
 Central Pa. Power Co. & New England Telephone Co.

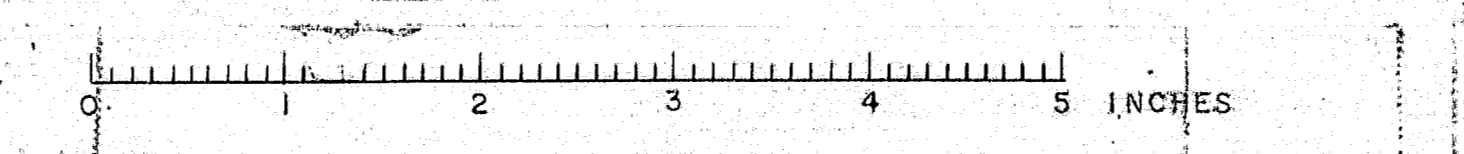
Field Revisions in Green - H.R.D. - 2/12/54

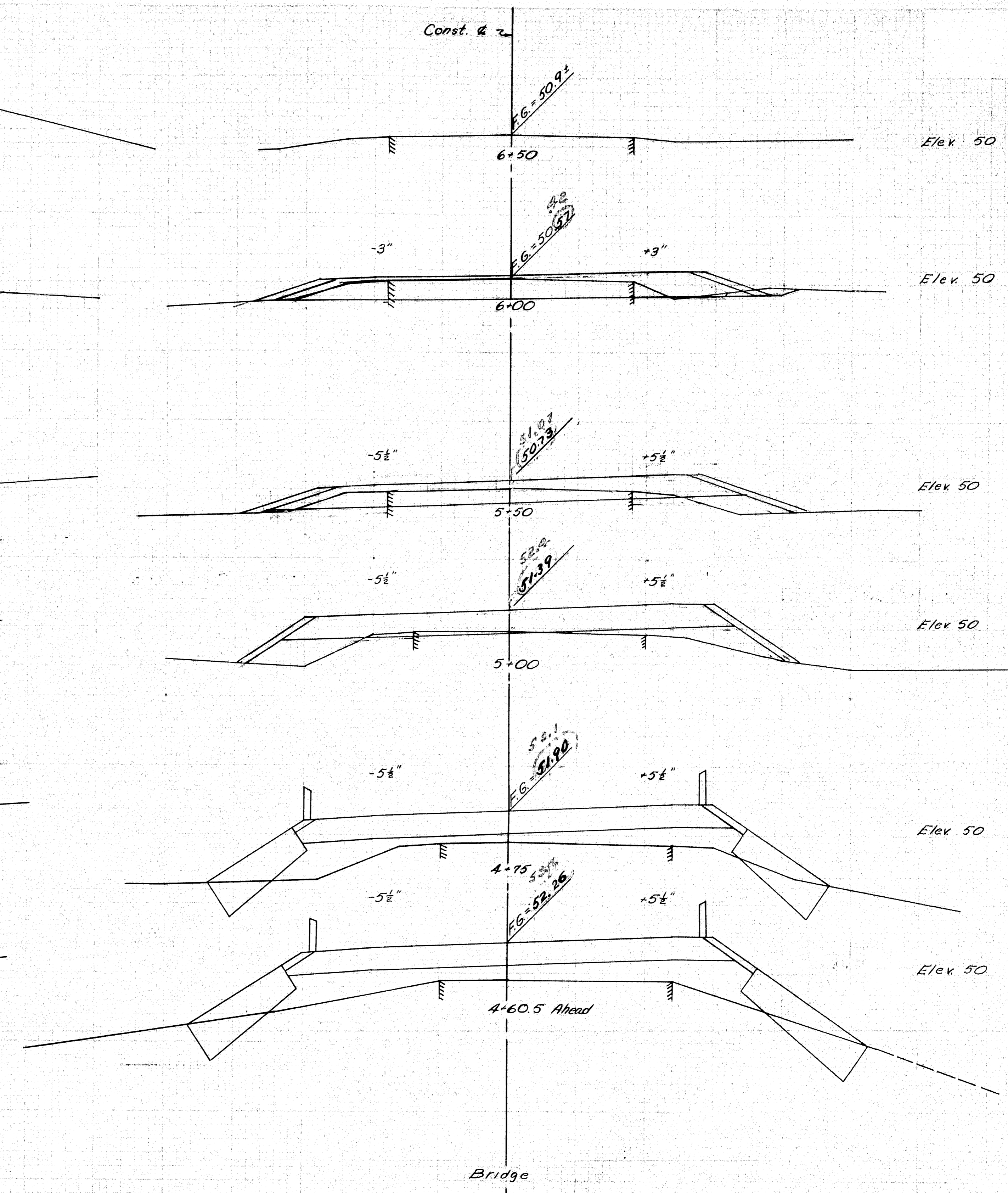
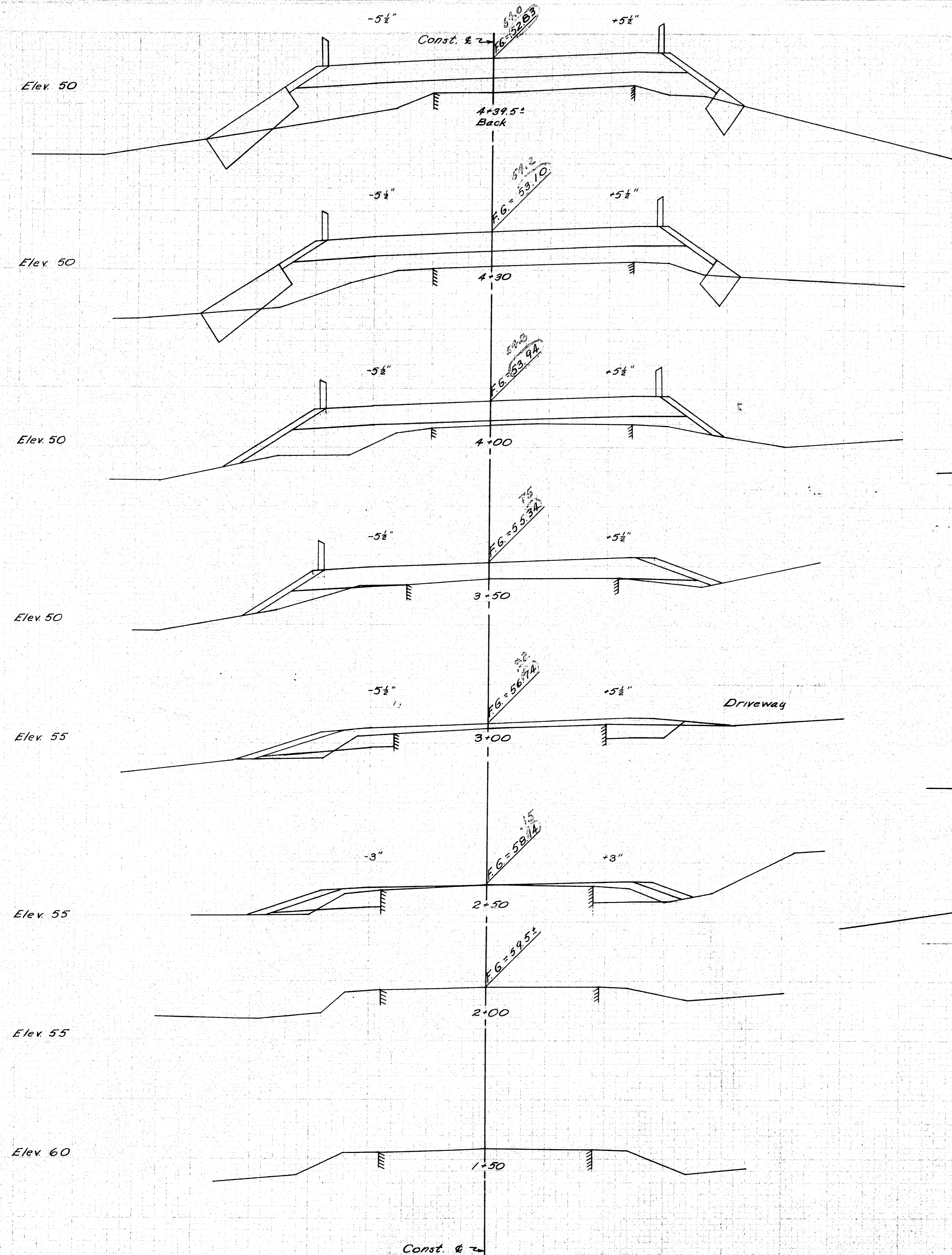
SURVEY - BLAKE	BRIDGE - 2321
PLOT - MORRISON	
TRACE - BACHELDER	

STATE HIGHWAY COMMISSION
 BRIDGE DIVISION

GOSLINE BRIDGE
 OVER
COLD STREAM
 IN THE TOWN OF
KENNEBEC COUNTY
 SURVEY

SHEET 1 OF 3 AUGUSTA, MAINE FEB. 1954

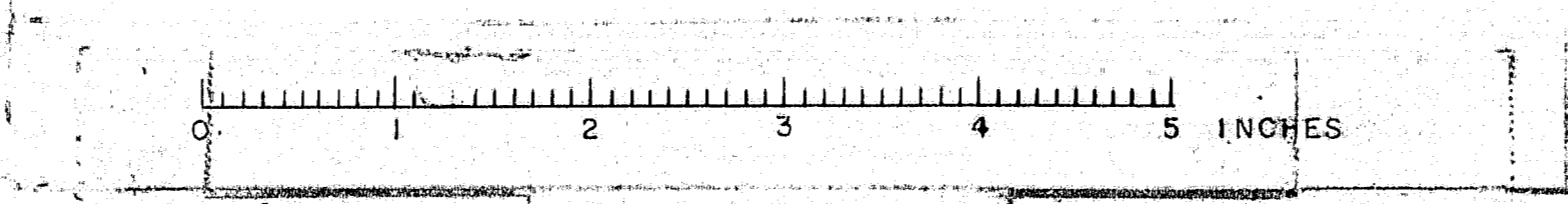




Do not excavate for Gravel Base where existing material is suitable.

Field Notes to Comm. 1172-9/19/59

PLOT - KETNER	BRIDGE - 2321
CHECK - N.W.T.	
STATE HIGHWAY COMMISSION BRIDGE DIVISION	
GOSLINE BRIDGE OVER	
COLD STREAM IN THE TOWN OF	
WEST GARDINER KENNEBEC COUNTY	
CROSS SECTIONS	
SHEET 2 OF 3	AUGUSTA, MAINE FEB. 1955
69-199	



REQUIRED
 One Structural Plate Arch of #5 gage material with the dimensions as shown. 17'-0" span and 7'-2" rise. The 5x3 1/2 angles and lag screws are to be furnished with the arch. Angles to be hot dip galvanized after fabrication. Lag screws to be hot dip galvanized. There shall be a minimum of 4-3/4" bolts per foot of longitudinal seam. The rise and span may be varied slightly with the approval of the Engineer.

DRIFT PINS			
No.	Size	Length	Position
5B	3/4" #	1'-0"	T3-4 to T1-2
1A0	3/4" #	1'-2"	T1-2 to logs

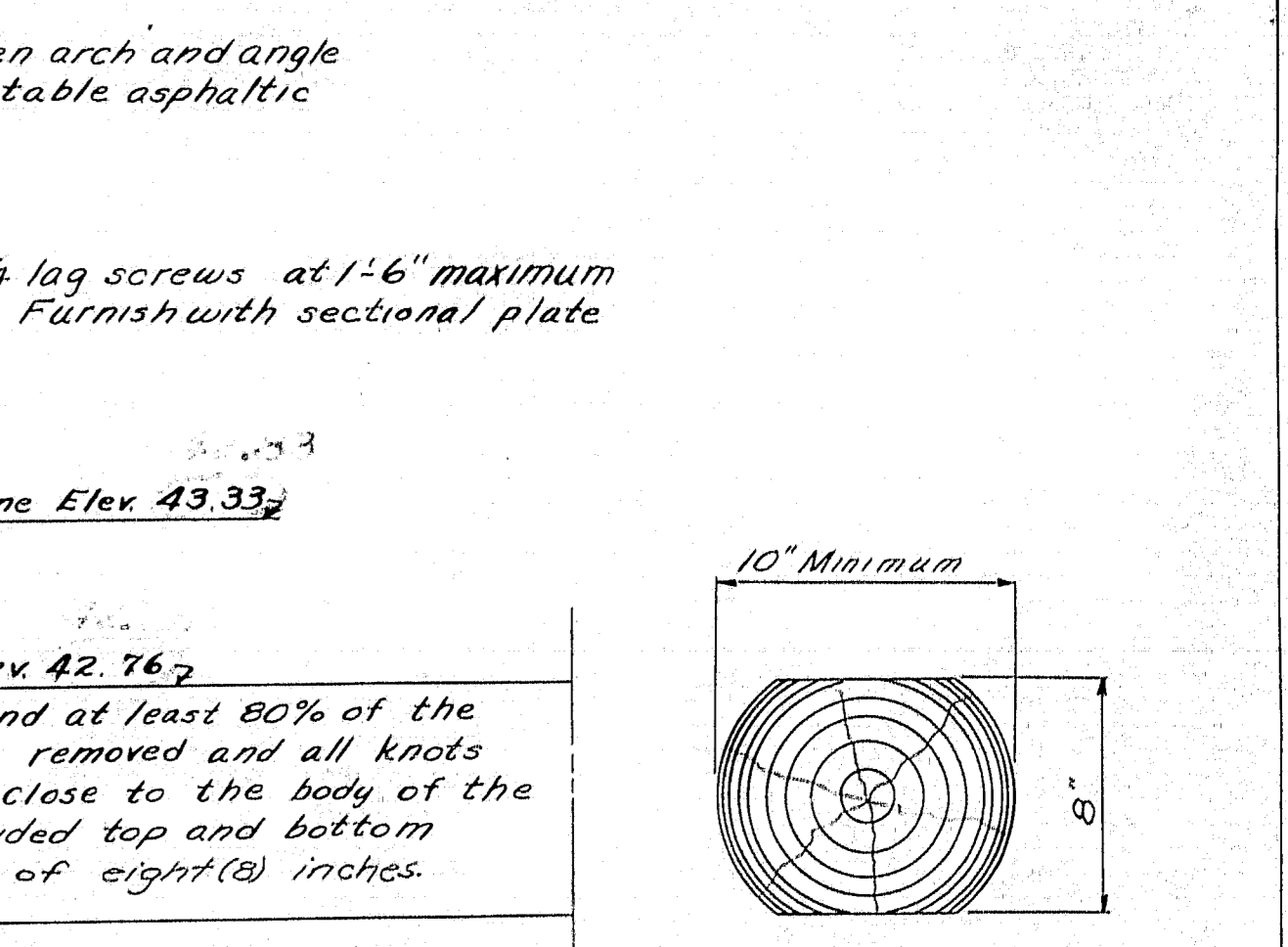
Drift pins to have points drawn to 1/4" #

TIMBER SCHEDULE				
Mark	Size	No.	Length	Remarks
T1	8x10	8	12'-0"	Make 2 complete units 58'-0" long.
T2	8x10	2	10'-0"	Make 2 complete units 58'-0" long.
T3	6x6	8	12'-0"	Make 2 complete units 58'-0" long.
T4	6x6	2	10'-0"	Make 2 complete units 58'-0" long.
T5	3' Plank 57061	5'-0"		Tongue & Groove

LOGS FOR FLOORING			
No.	Size	Length	Remarks
702	See detail	19'-0"	10" dia. minimum

All squared timber except the 3' plank-T5 shall be pressure treated.

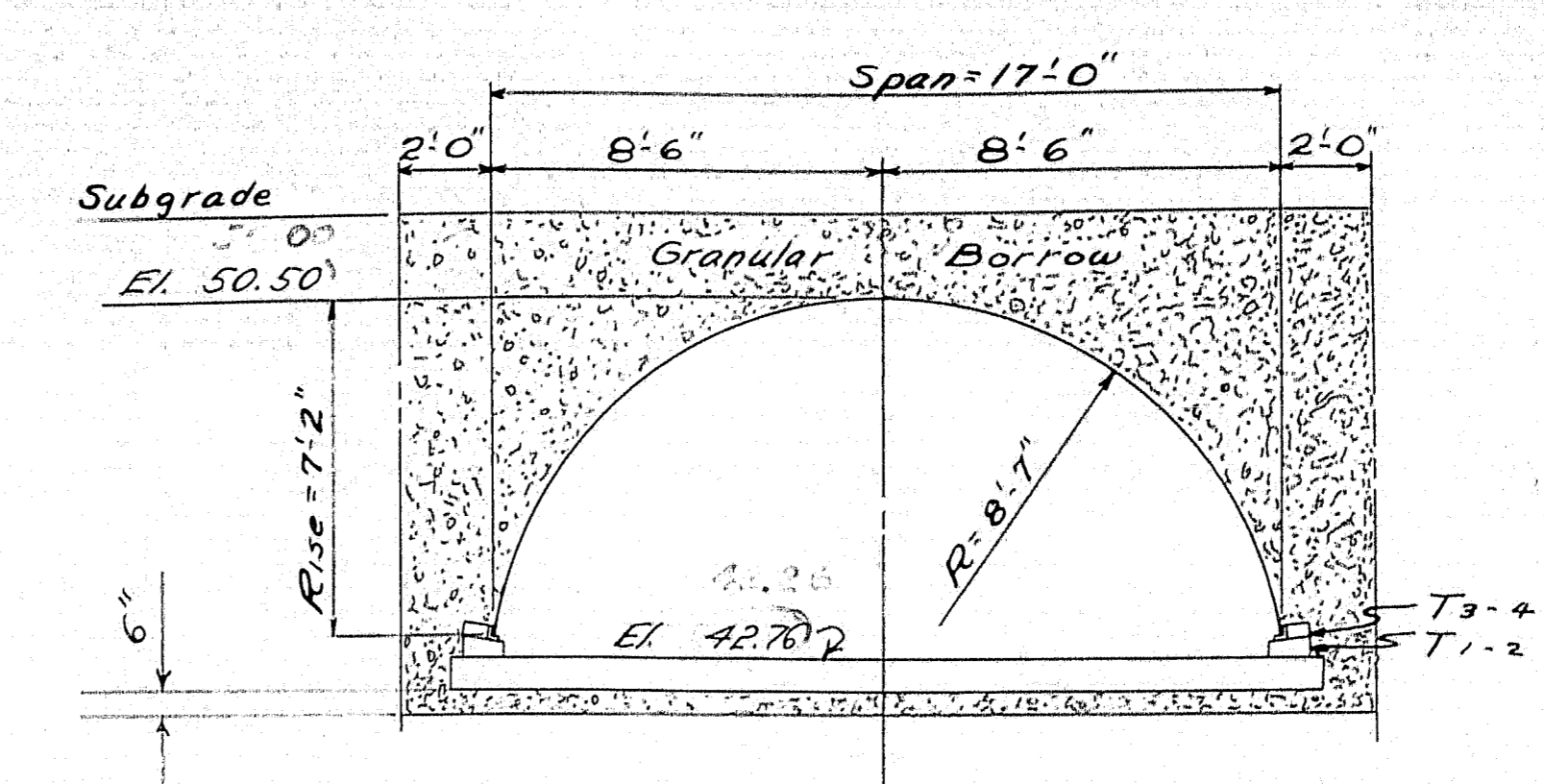
Logs shall be laid as close together as practicable with butts and tips alternating in general. No splices will be permitted in grillage logs. Timber T1,2,3,4 shall be pressure treated. T1,2 shall be cut to dimensions before treatment. Locate 6"x3/4" lag screws in valleys.



FOOTING SECTION

Field Revisions in Green - WAD-9/15/50

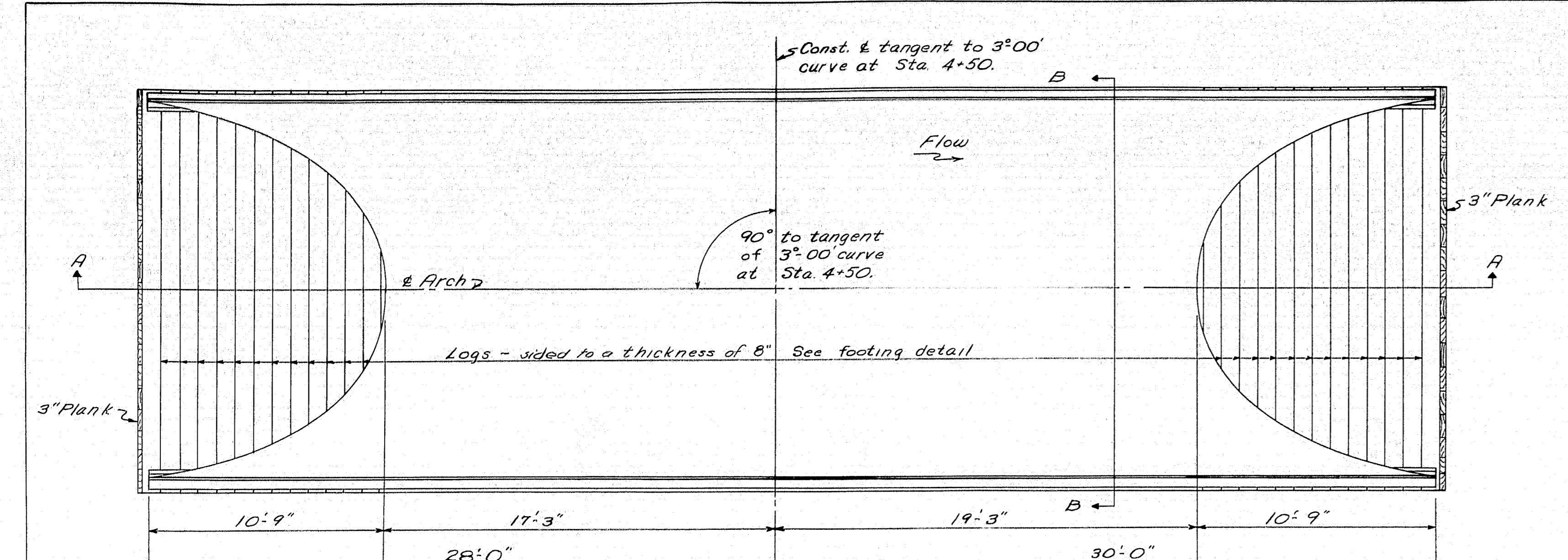
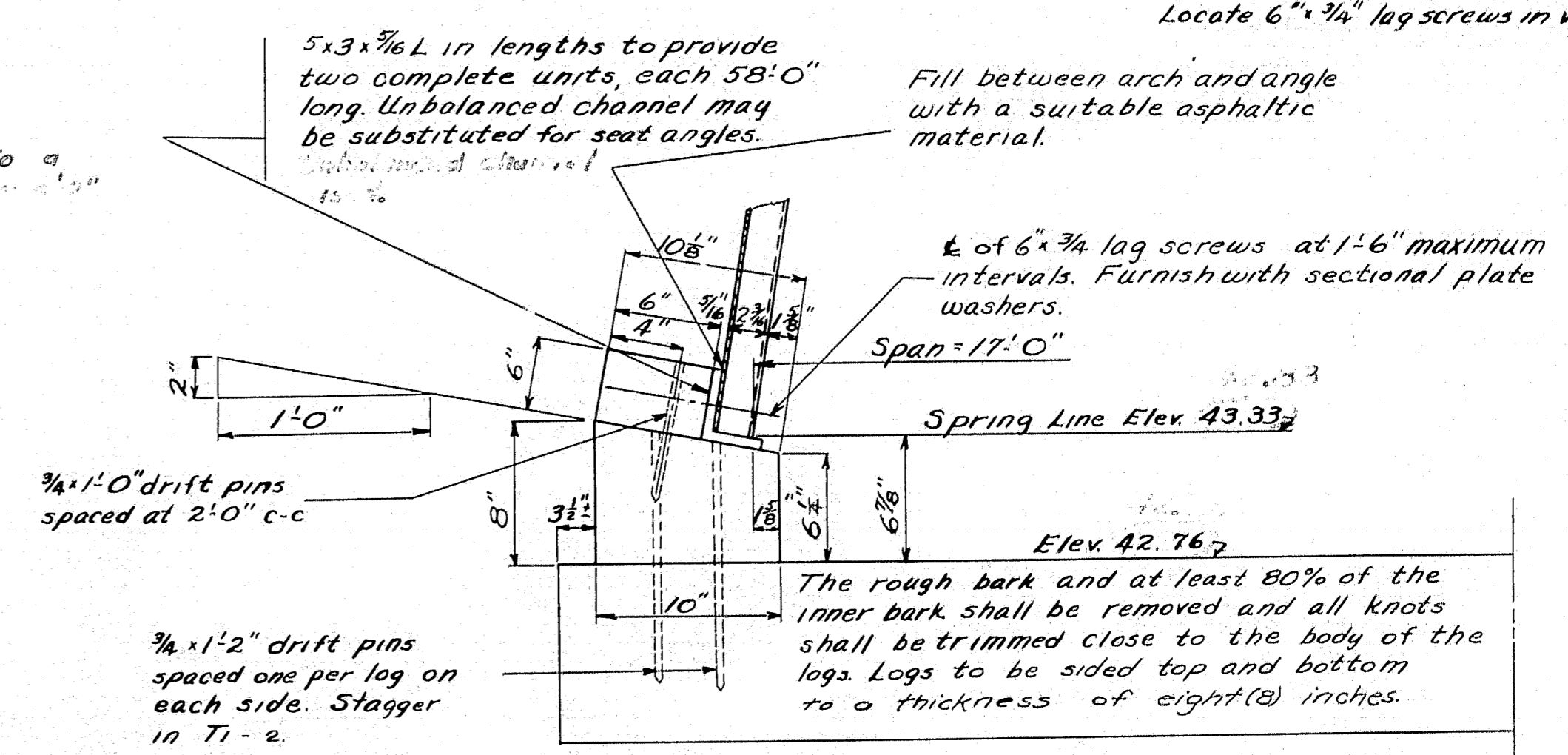
DESIGN- KETNER	BRIDGE - 2321
CHECK- N.W.T.	
STATE HIGHWAY COMMISSION BRIDGE DIVISION	
GOSLINE BRIDGE	
OVER	
COLD STREAM	
IN THE TOWN OF	
WEST GARDINER	
KENNEBEC COUNTY	
ARCH	
SHEET 3 OF 3	AUGUSTA, MAINE FEB. 1955



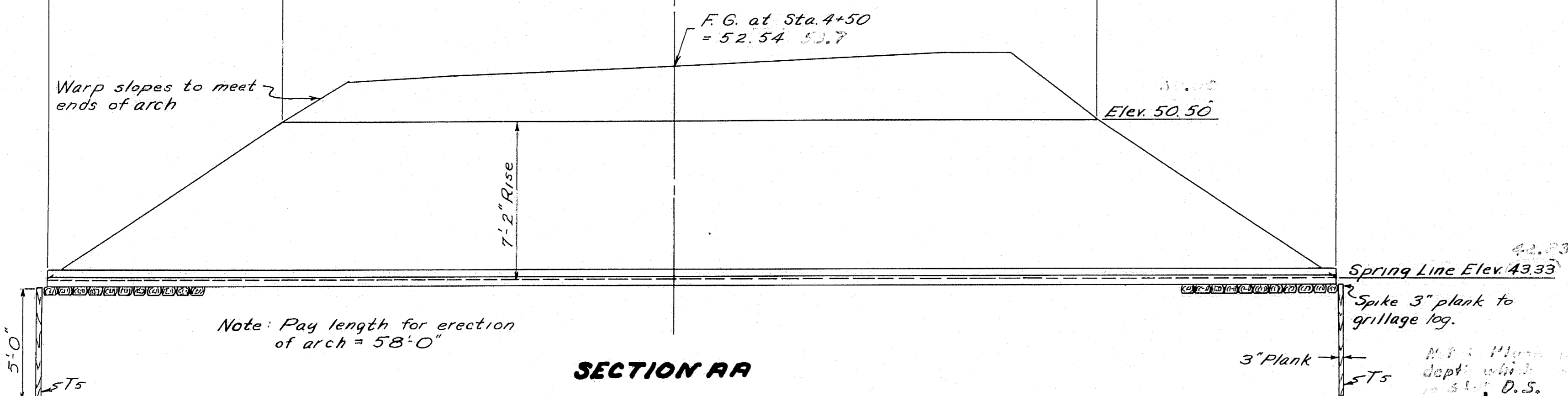
SECTION BB

The excavation necessary for placing the granular borrow and construction of structural plate arch will be paid under Item 204-10, Structural Earth Excavation, Drainage.

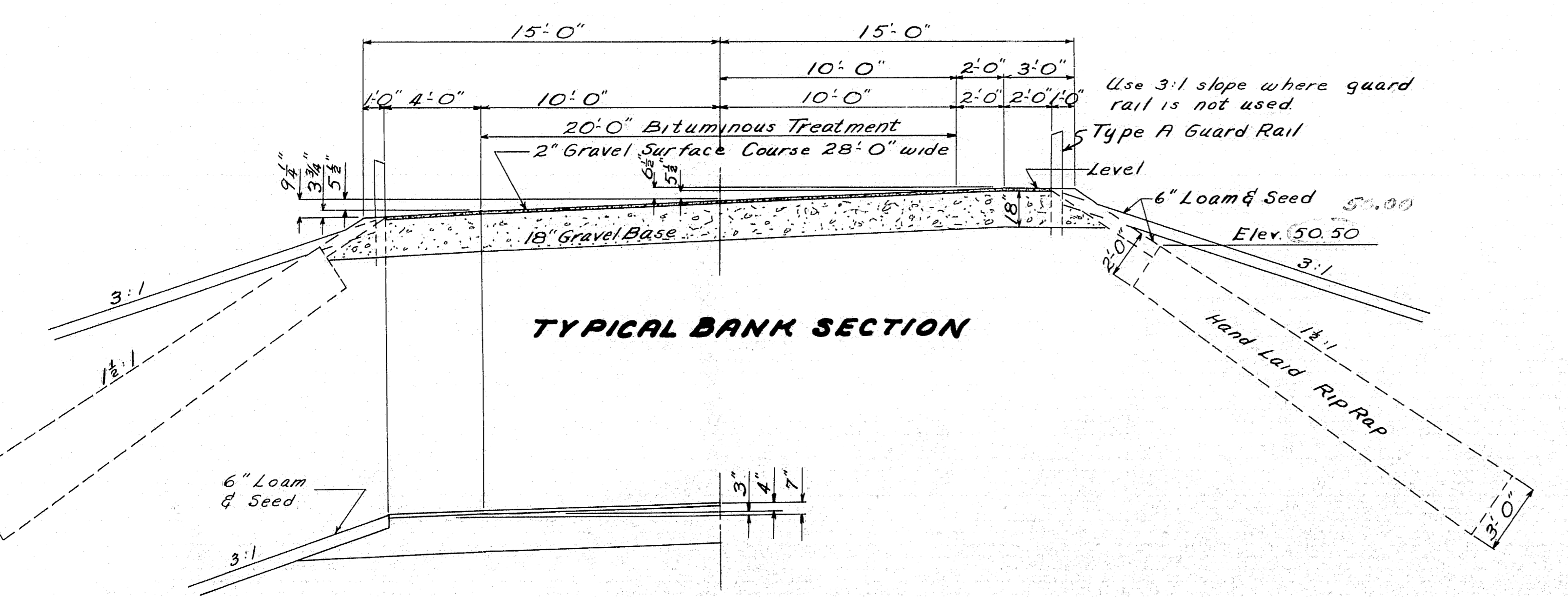
LOADING: H20-44



ARCH PLAN



SECTION AA



TYPICAL BANK SECTION



NORMAL SECTION

