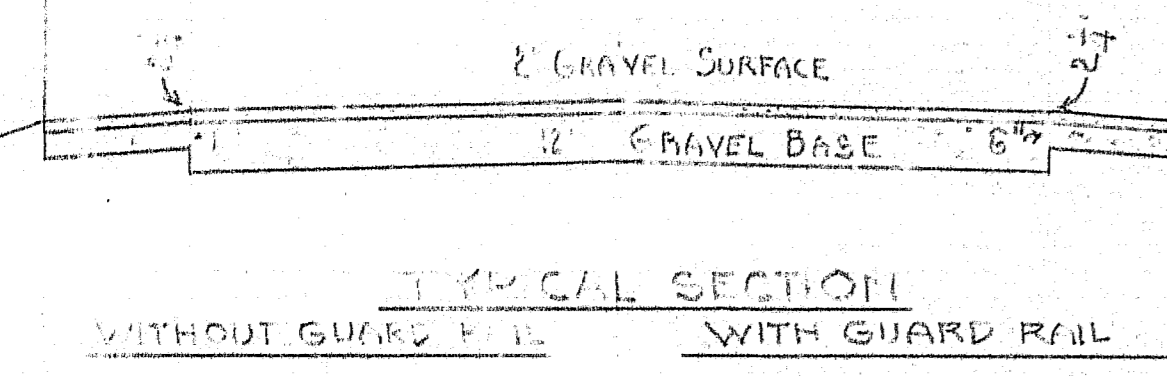


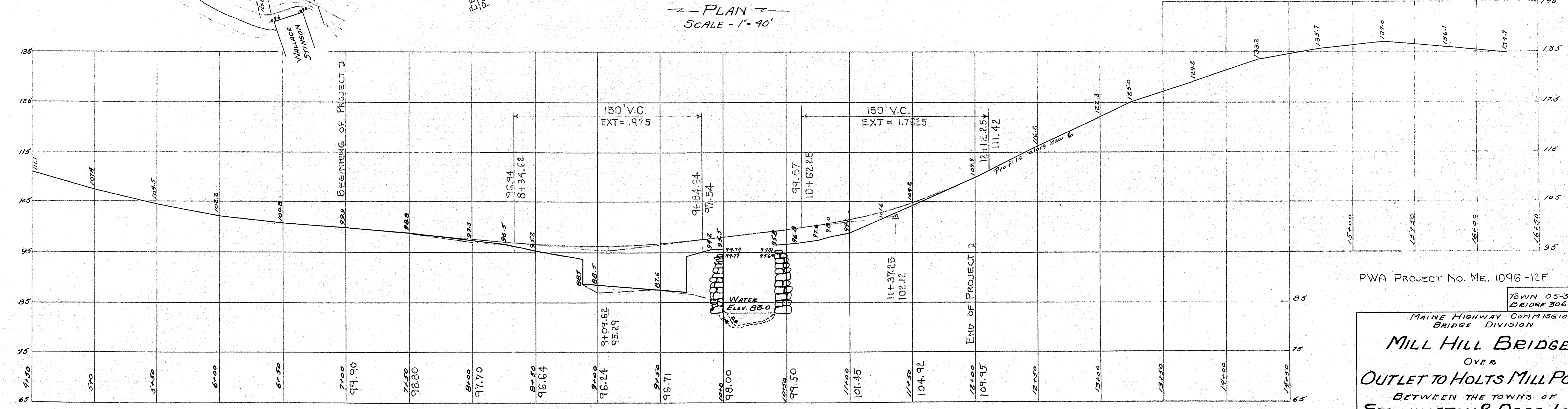
TRAFFIC - Temporary bridge better located upstream.
 EXISTING SUPERSTRUCTURE - 3-panel pony steel pin-connected (Warren type) truss span built by Canton Bridge Co. in 1901, with 3' transverse and 2' longitudinal plank in fair condition.
 EXISTING SUBSTRUCTURE - Abutments of roughly split granite fairly laid in mortar and in fair condition. Mortar in tide range eaten away. Retaining walls of causeway of boulders and roughly split granite fairly laid dry and in poor condition.
 WATER COURSE - Salt tidal inlet. Ordinary high tide at Elev. 88.5. Monthly high tide at Elev. 90.2. Extreme high tide reported as 2' over low part of road on causeway at Elev. 94'. During emptying and filling of pond water drops 2' going thru bridge at about 8 miles per hour.
 FOUNDATION - Stream bed large rocks, probably overlying ledge. No penetrations.



NOTE - SEE CROSS SECTIONS FOR SUPERELEVATIONS

$\Delta = 83^{\circ}24' R$
 $T = 32^{\circ}00'$
 $RT = 161.62$
 $R = 181.40$

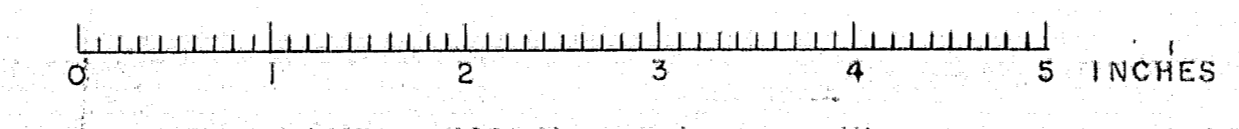
PLAN
 SCALE - 1" = 40'

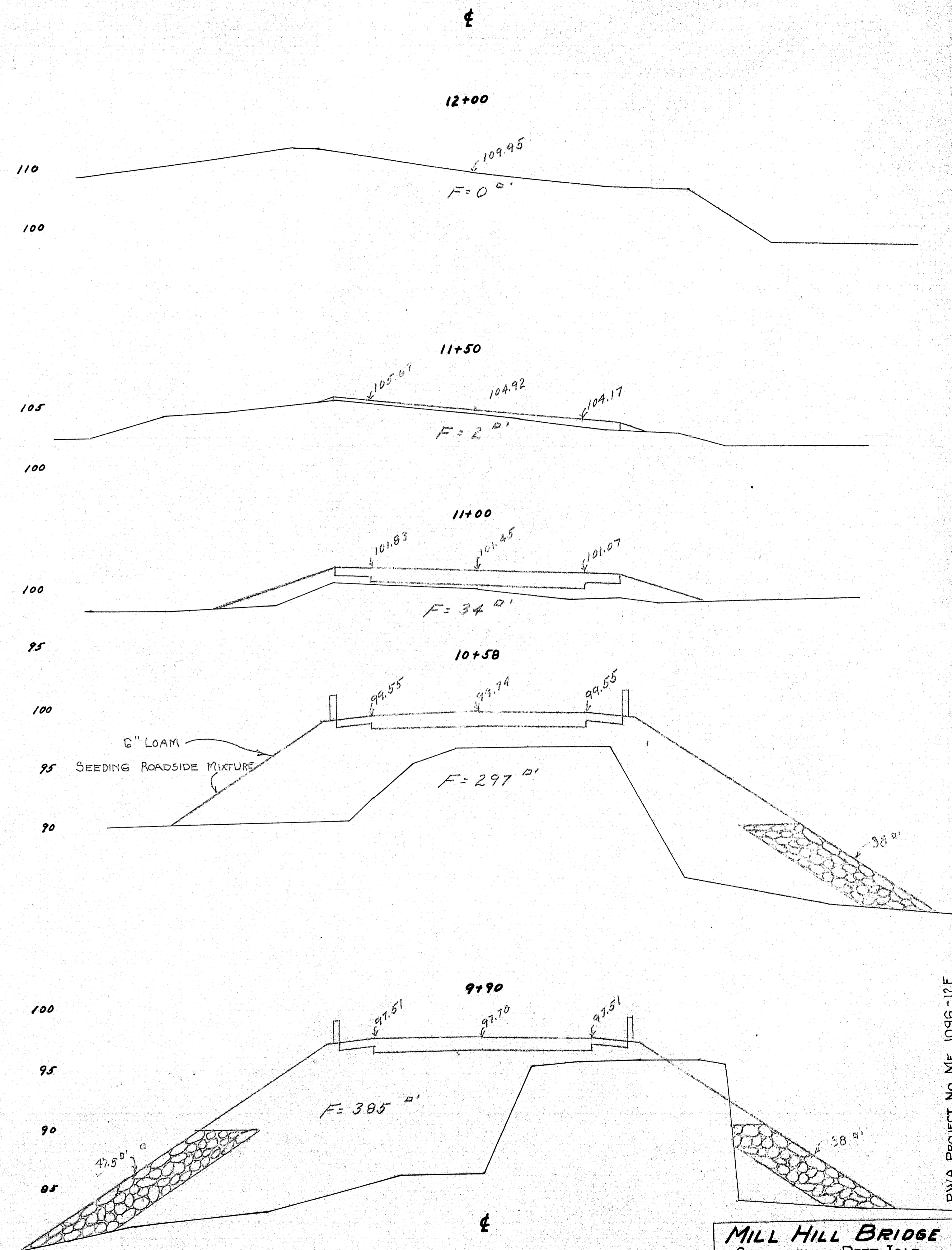
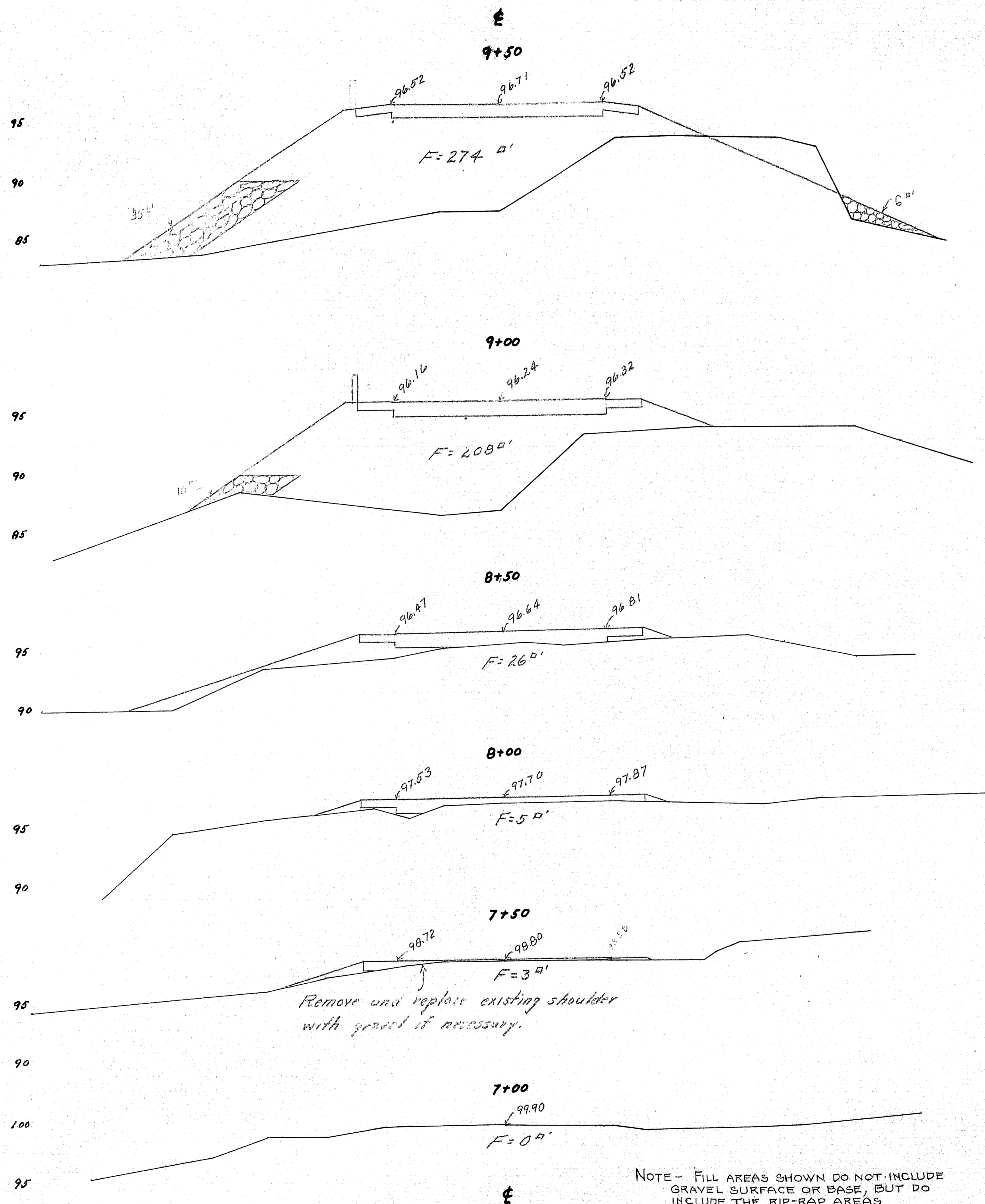


PROFILE
 Hor. 1" = 40' Vert. 1" = 10'

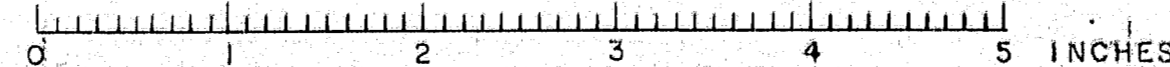
PWA PROJECT No. ME. 1096-12F
 TOWN 05-35
 BRIDGE 3065
 MAINE HIGHWAY COMMISSION
 BRIDGE DIVISION
MILL HILL BRIDGE
 OVER
OUTLET TO HOLTS MILL POND
 BETWEEN THE TOWNS OF
STONINGTON & DEER ISLE
HANCOCK CO.
 SURVEY PLAN
 Sheet 1 of 4 August, Me. Dec. 12, 1932

SURVEY: BECKMAN
 R. & T. HERSEY





NOTE - FILL AREAS SHOWN DO NOT INCLUDE GRAVEL SURFACE OR BASE, BUT DO INCLUDE THE RIP-RAP AREAS

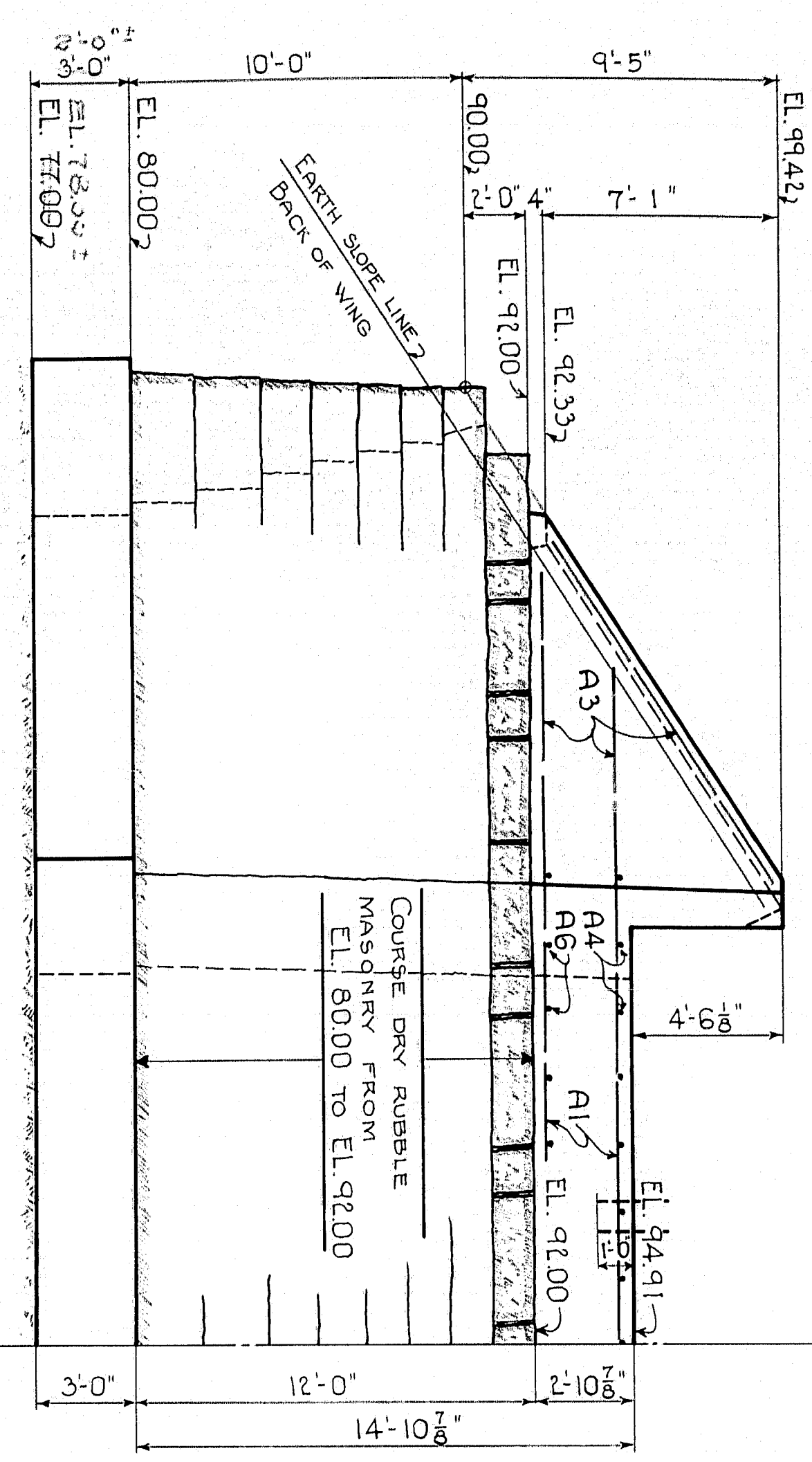


MILL HILL BRIDGE
 STONINGTON - DEER ISLE
 Sheet 2 of 4

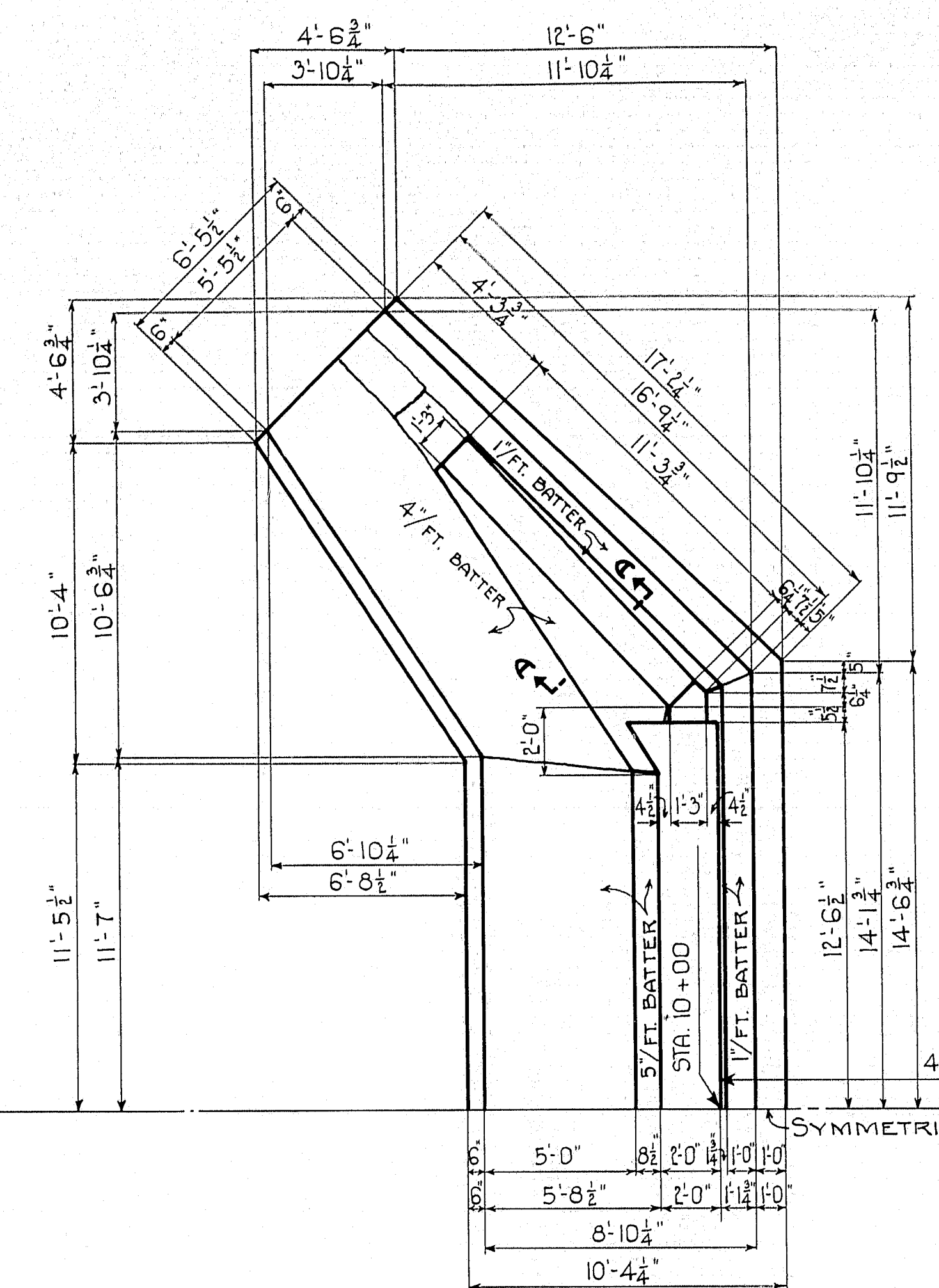
31-146

PWA PROJECT No. ME. 1096-12F

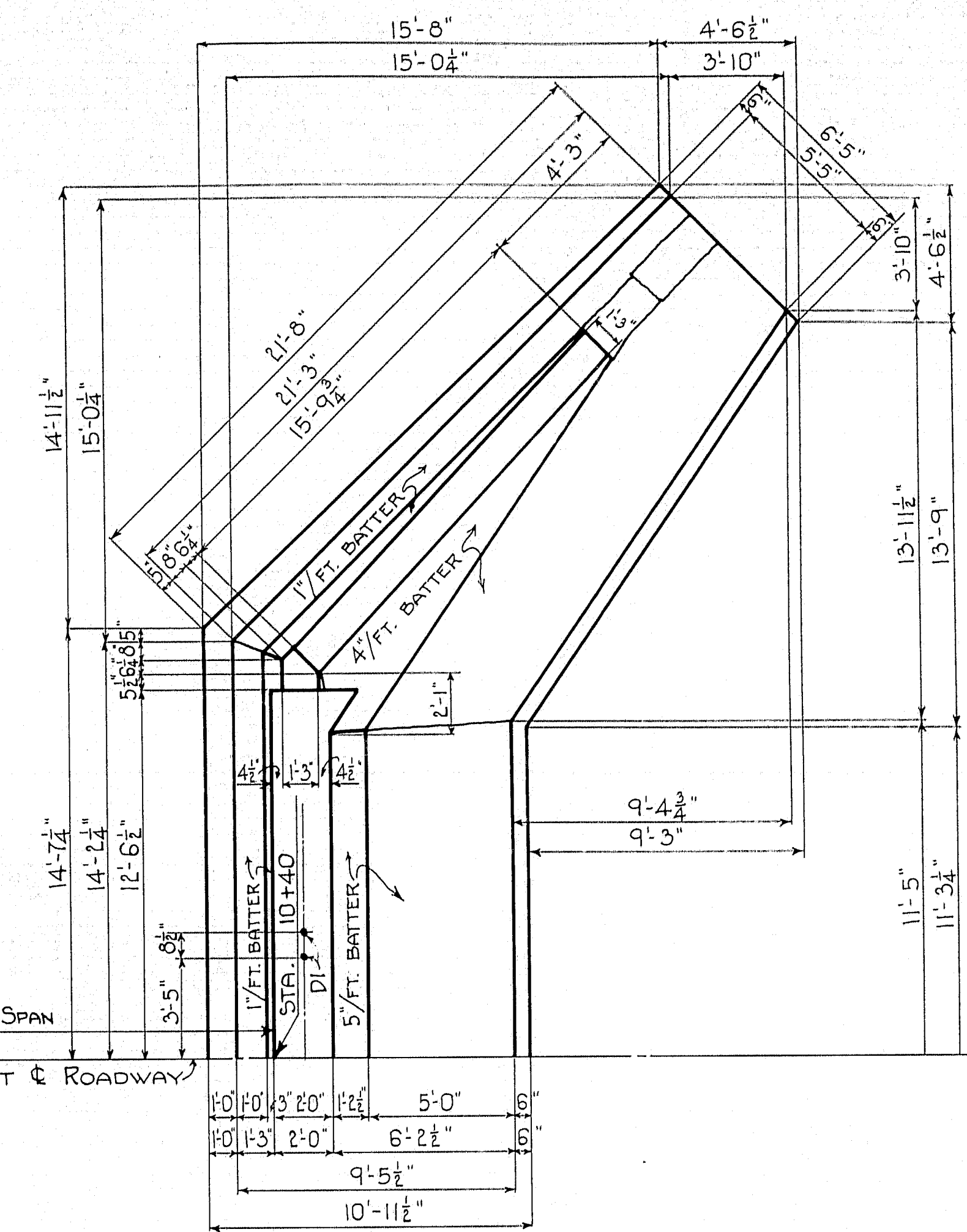
HALF FRONT ELEVATION ABUTMENT NO. 2.



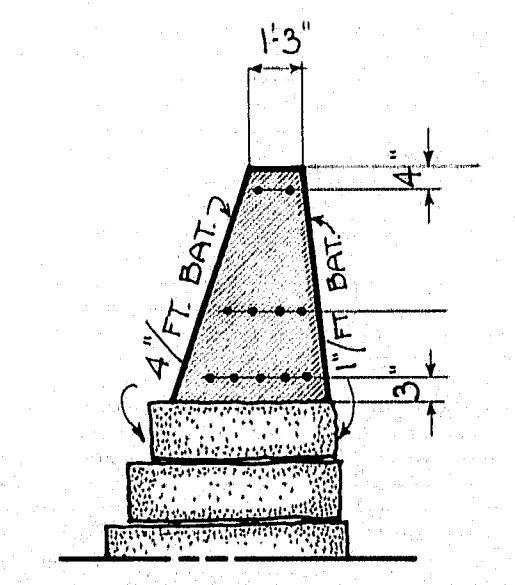
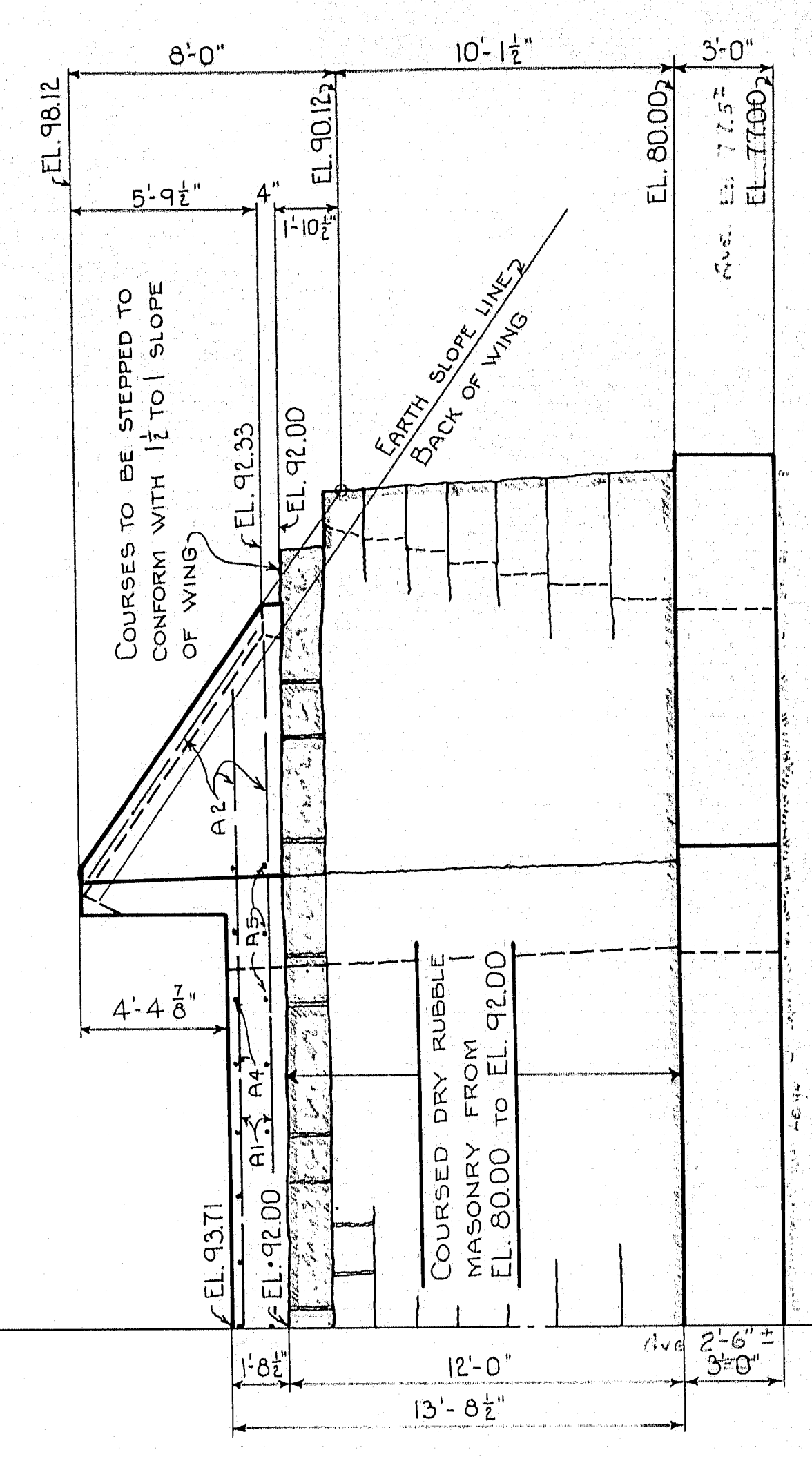
HALF PLAN ABUT. NO. 1.



HALF PLAN ABUT. NO. 2.



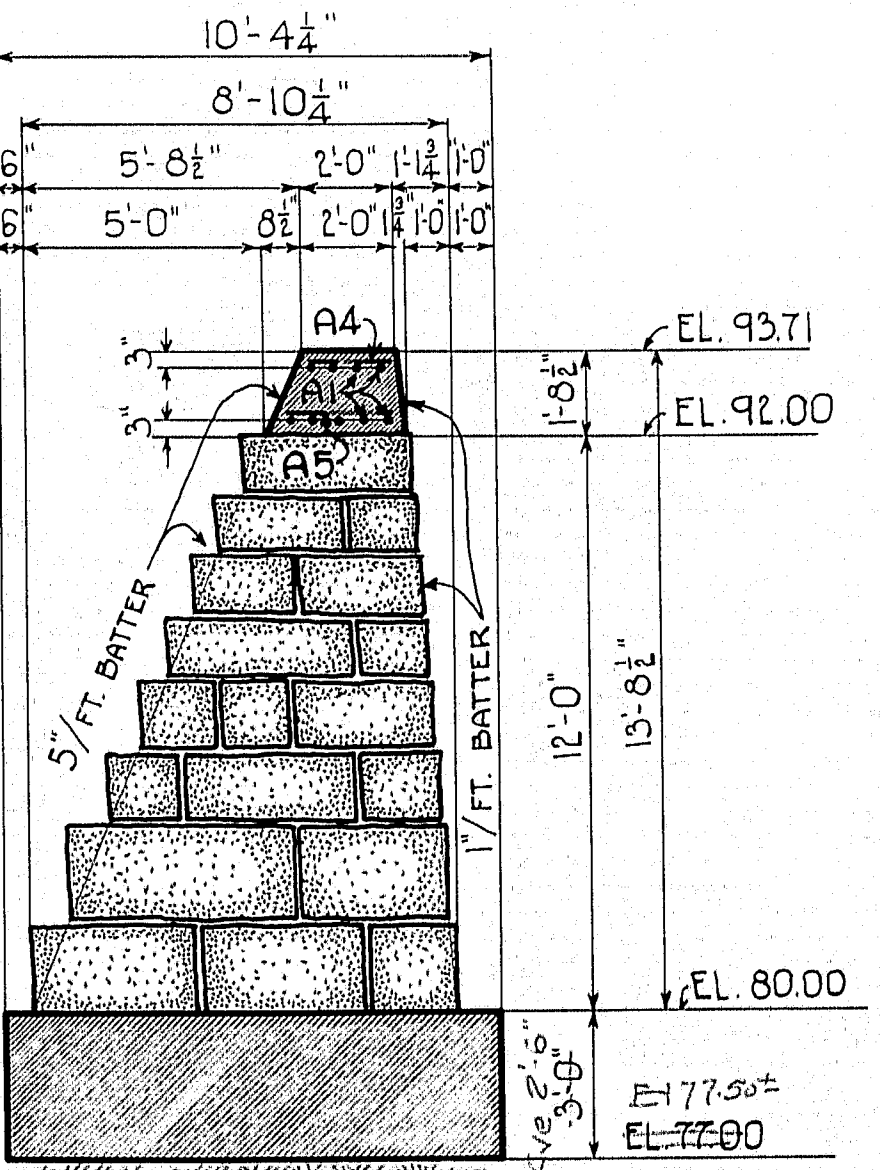
HALF FRONT ELEVATION ABUTMENT NO. 1.



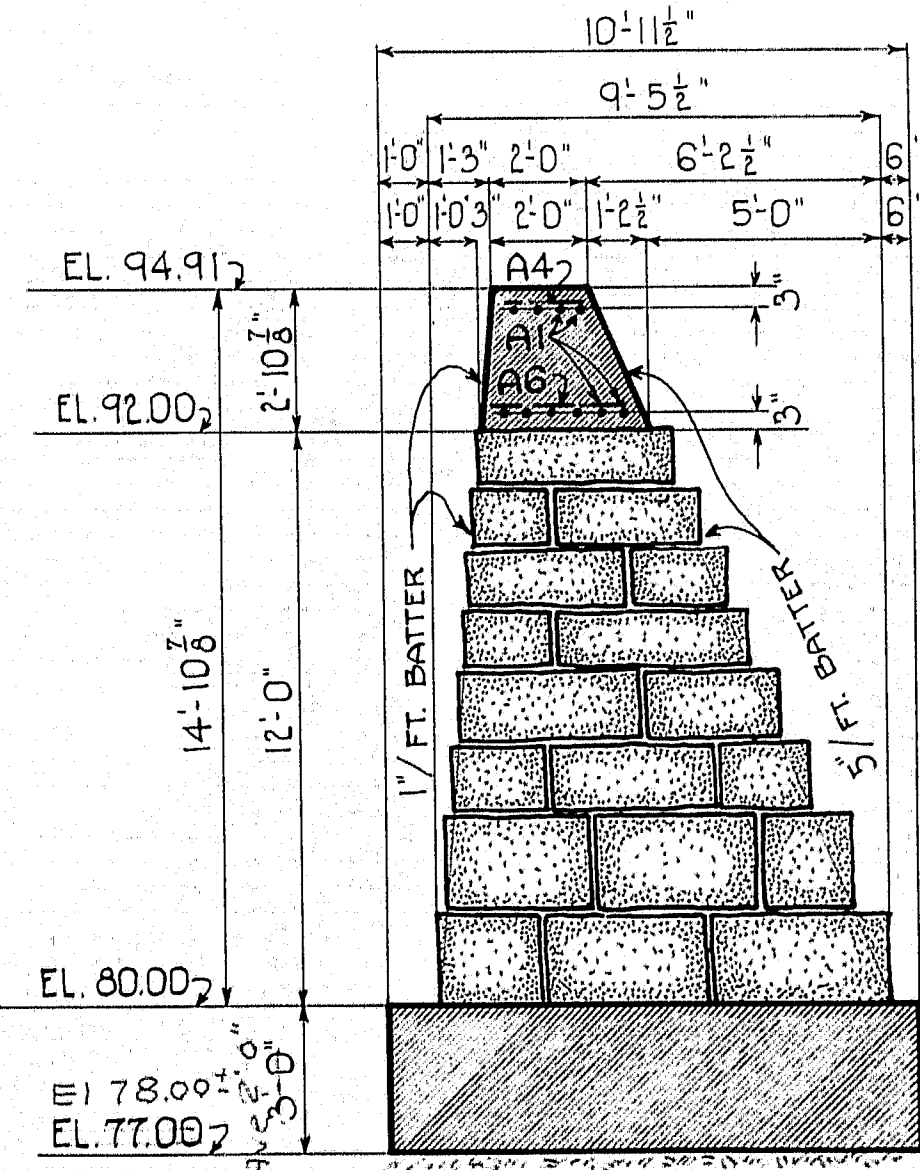
SECTION A-A

SECTION THRU WINGS ON NO. 2. ABUTMENT IS SIMILAR.

NOTE - A2 AND A3 TO BE LAPPED TO A1 AND ARE TO BE BENT IN FIELD TO FIT.



SECTION NO. 1. ABUT.



SECTION NO. 2. ABUT.

NOTE - A1 @ 6' o.c.
A4 - A5 - A6 @ 2'-0" o.c.

PWA PROJECT No. ME. 1096-12 F
 Design traced - *Yonellin*
 CHECKED - G. Bragdon
 TOWN 05-35
 BRIDGE 3063
 STATE HIGHWAY COMMISSION
 BRIDGE DIVISION
MILL HILL BRIDGE
 OVER
OUTLET TO HOLTS MILL POND
 BETWEEN THE TOWNS OF
STONINGTON AND DEER ISLE
 HANCOCK CO.
 SUBSTRUCTURE
 SHEET 3 OF 4 AUGUSTA, ME. JULY 1938.

