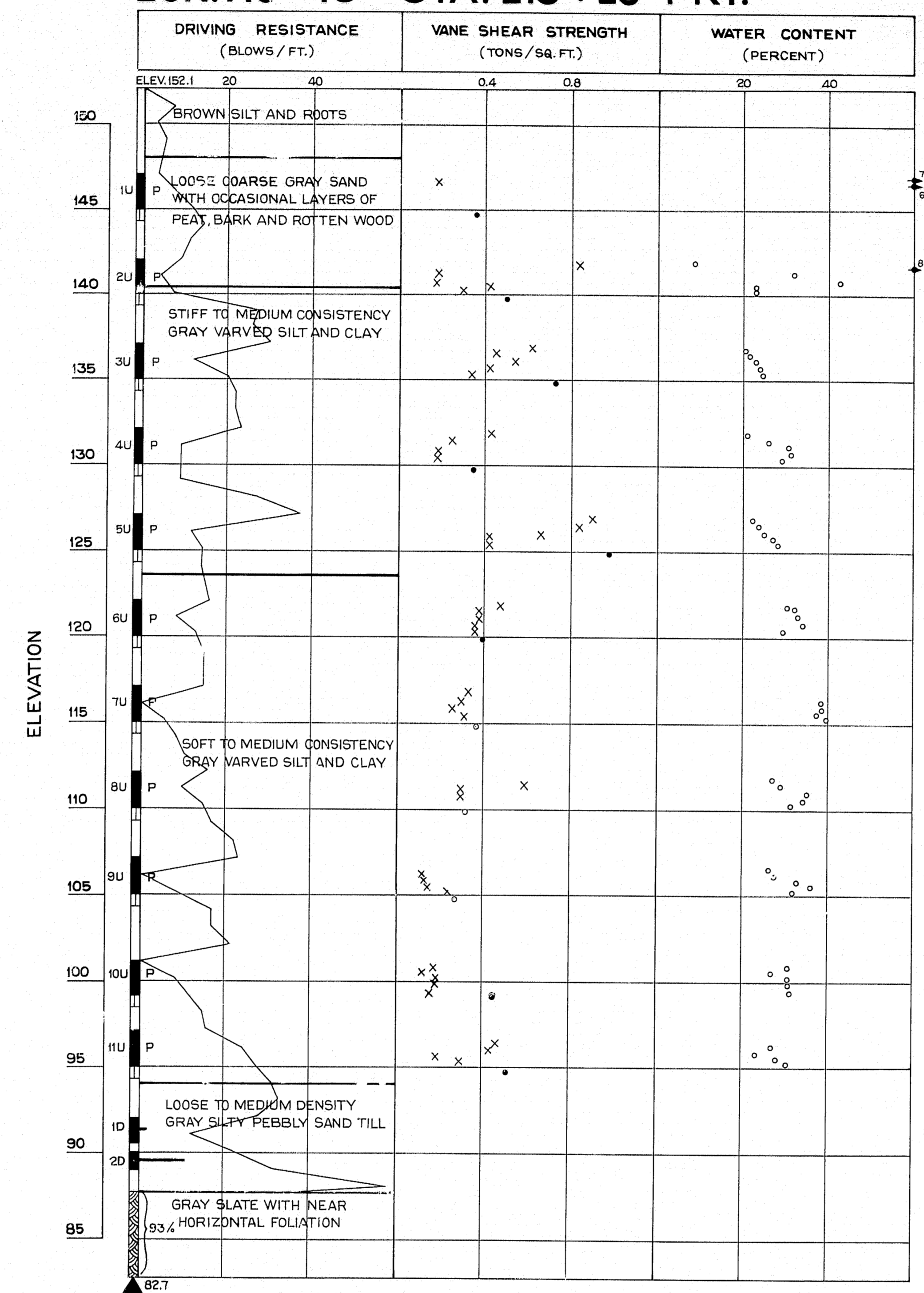


BOR. AC - 73 STA. 219+20 1' RT.

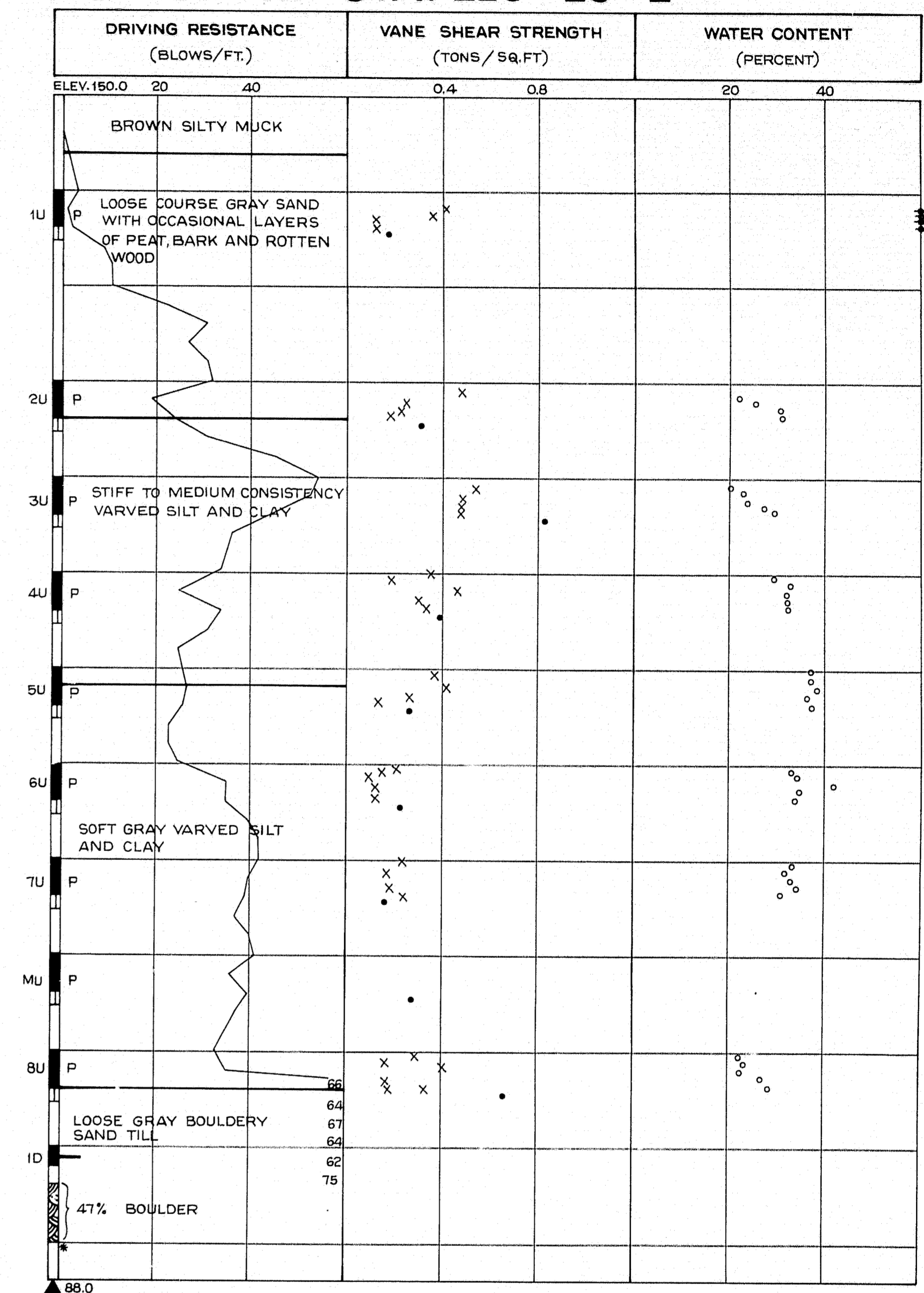


BORING NOTES
 NUMBER OF BLOWS REQUIRED TO DRIVE EXTRA HEAVY CASING ONE FOOT WITH 400 FT. LBS. OF ENERGY PER BLOW
 LOCATION OF SAMPLE OR SAMPLE ATTEMPT
 5 1/4" SAMPLER #1250
 3 1/2" O.D. 16 GA. SEAMLESS TUBING
 NUMBER OF BLOWS REQUIRED TO DRIVE SPOON OR TUBING ONE FOOT WITH 350 FT. LBS. OF ENERGY PER BLOW
 PISTON SAMPLER
 FIELD VANE TEST
 BOTTOM OF BORING (MAY NOT BE BOTTOM OF SOIL STRATA)
 LOCATIONS CORED BY DIAMOND BIT AND PER CENT RECOVERY OF ROCK

SHEAR NOTES
 • FIELD VANE SHEAR STRENGTHS
 X LABORATORY VANE SHEAR STRENGTHS
 + SHEAR STRENGTHS IN EXCESS OF CAPACITY OF EQUIPMENT

WATER CONTENT NOTES
 O NATURAL WATER CONTENTS, GIVEN AS PER CENT OF DRY WEIGHT

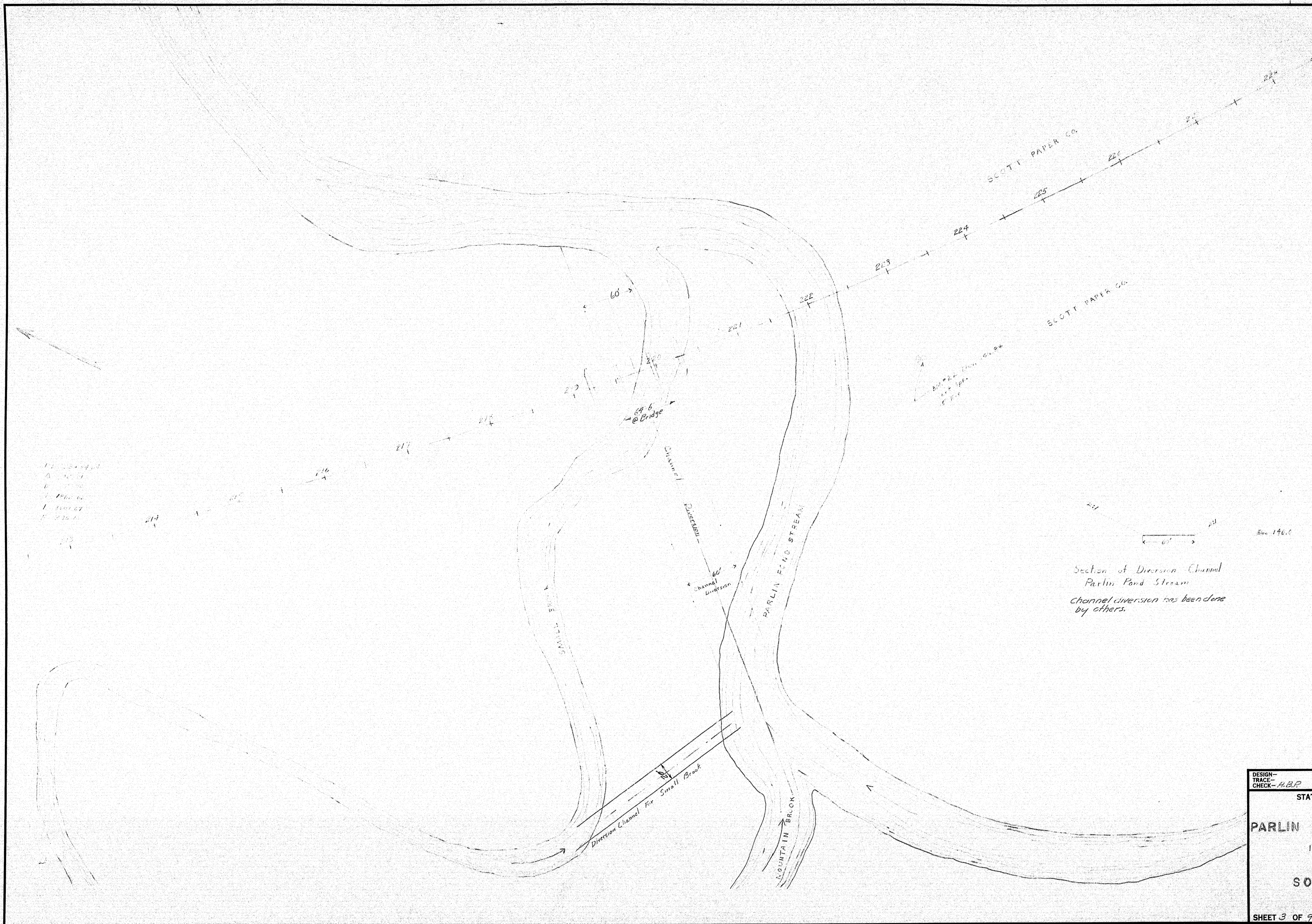
BOR. CT-72 STA. 220+20 1/2



NOTE: BOTH CASINGS FOR THE ABOVE BORINGS ARE 4"

DESIGN— TRACE— CHECK—	BRIDGE NO. SURVEY— PLOT—
STATE HIGHWAY COMMISSION BRIDGE DIVISION	
PARLIN STREAM BRIDGE NO. 2 IN THE TOWNSHIP OF LONG POND SOMERSET COUNTY FOUNDATION SURVEY	
SHEET 2 OF 9 AUGUSTA, MAINE	

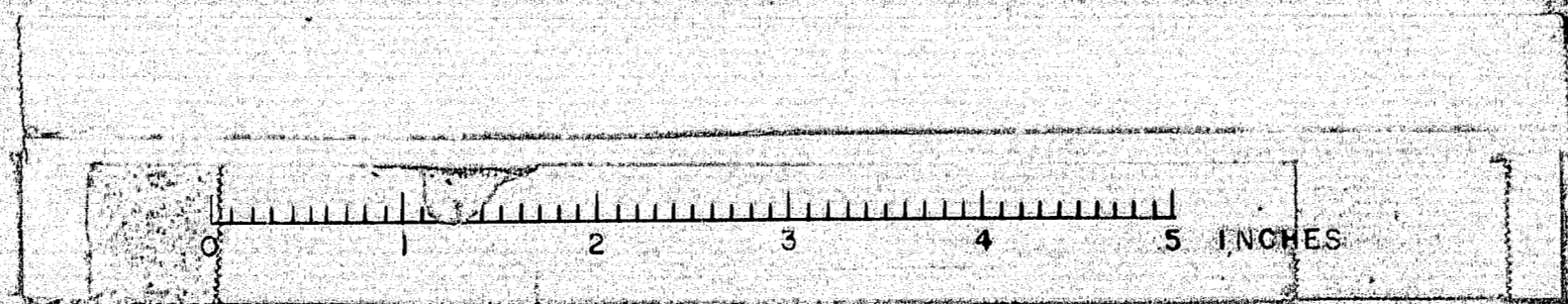
B. P. R. REG. NO.	STATE	PROJECT NUMBER	SHEET NO.	TOTAL SHEETS
1	MAINE			



Section of Diversion Channel
Parlin Pond Stream
Channel diversion has been done
by others.

DESIGN- TRACE- CHECK- PLOT-	BRIDGE NO. SURVEY- PLOT-
STATE HIGHWAY COMMISSION BRIDGE DIVISION	
PARLIN STREAM BRIDGE NO. 2	
IN THE TOWNSHIP OF LONG POND SOMERSET COUNTY	
SURVEY	
SHEET 3 OF 9 AUGUSTA, MAINE	

91-59

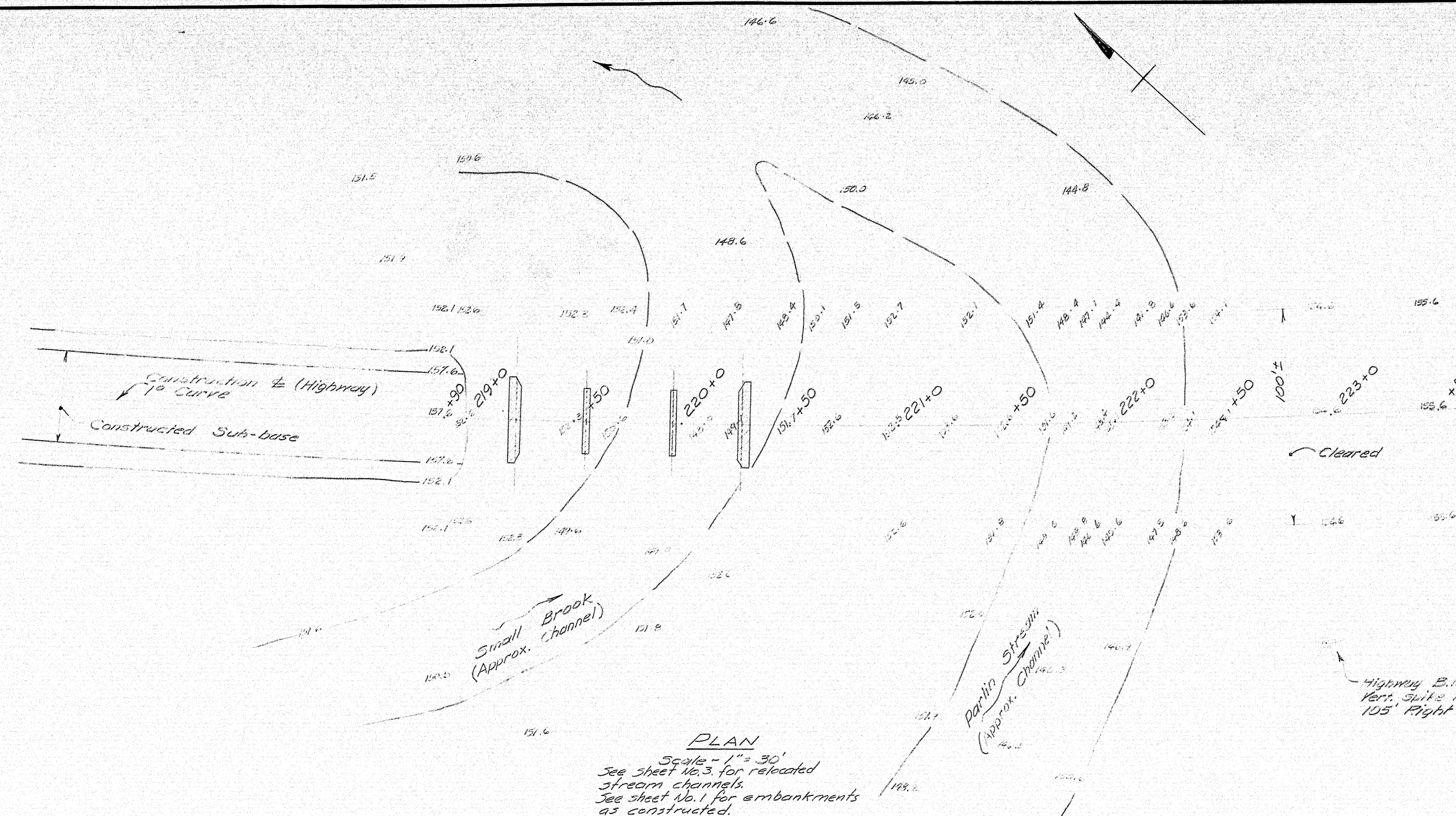


D. P. R. REG. NO.	STATE	PROJECT NUMBER	SHEET NO.	TOTAL SHEETS
1	MAINE			

NOTES

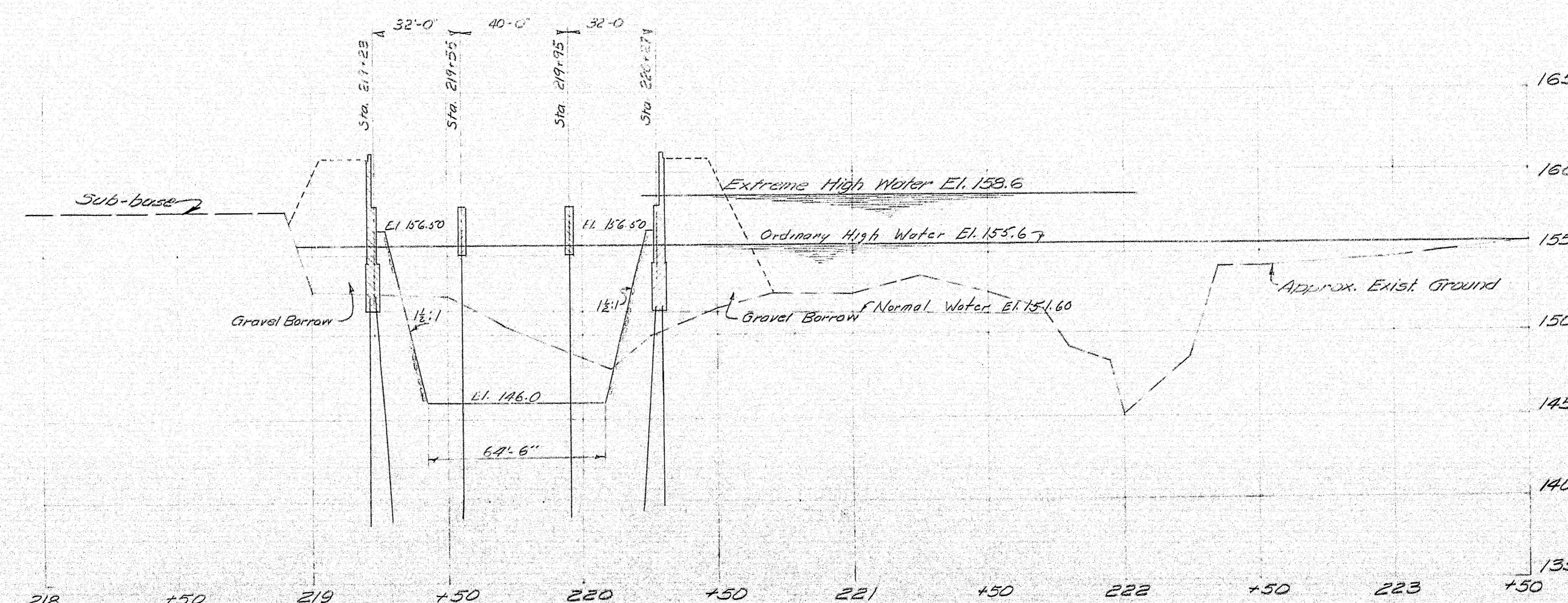
STREAM - High Water overflows from Sta. 215 ± to Sta. 223+50 ±. Present stage is back water from Long Lake at El. 155.57. Extreme High Water same conditions and at El. 158.6. Moderate current at all stages.

RAILROAD BRIDGE - About 1000' Downstream 10' x 18'. At present time underclearance is 3.5' above water.



PLAN

Scale - 1" = 30'
See sheet No. 3 for relocated stream channels.
See sheet No. 1 for embankments as constructed.



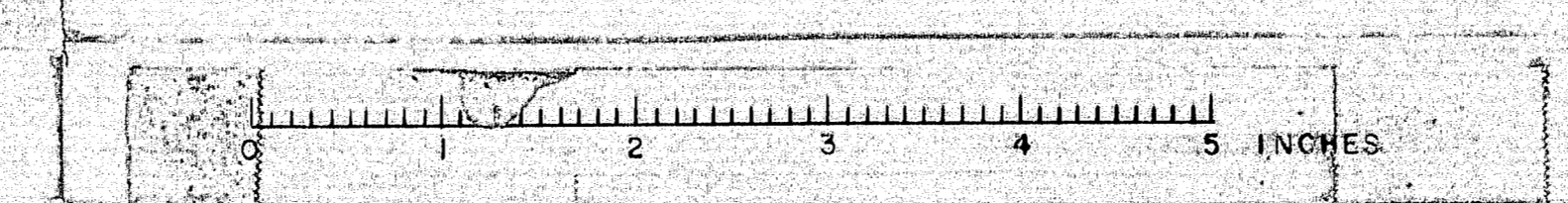
PROFILE ALONG CONSTRUCTION LINE

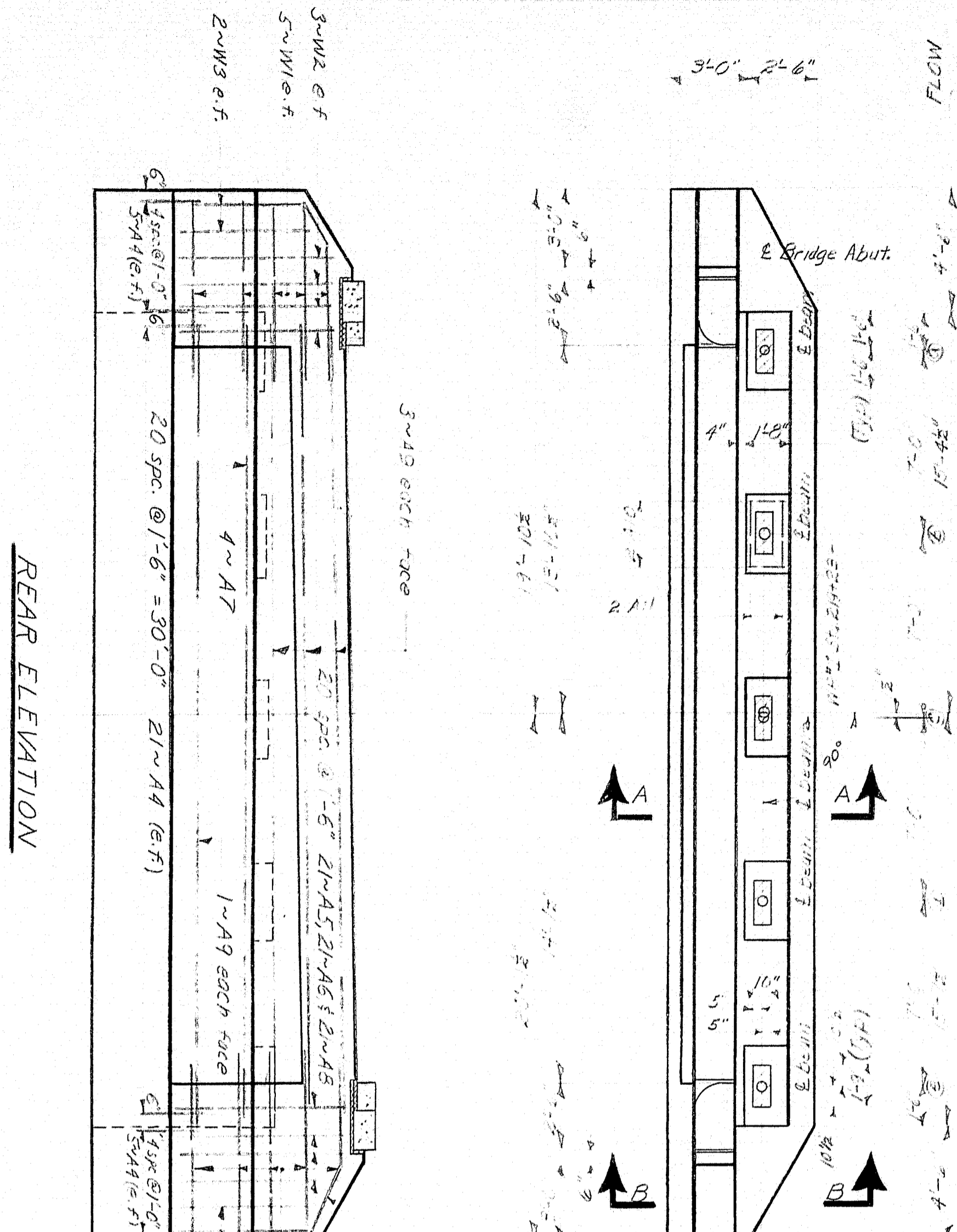
Scales - Hor. 1" = 30', Vert. 1" = 5'

NOTE: See Sh. #1 for detailed Limits of Work.

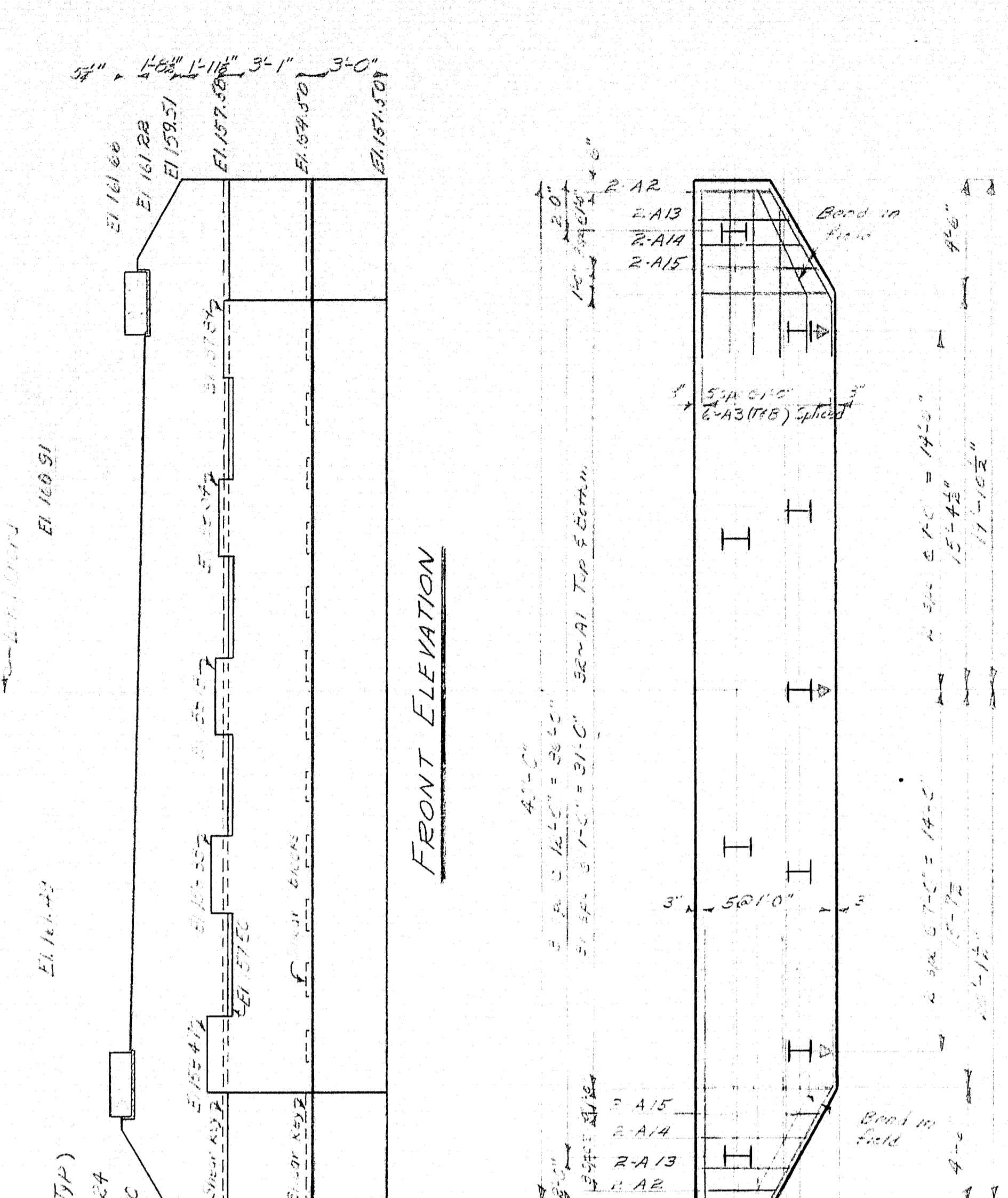
DESIGN - TRACE - CHECK - A.B.P.	BRIDGE NO. SURVEY - PLOT -
STATE HIGHWAY COMMISSION BRIDGE DIVISION	
PARLIN STREAM BRIDGE NO. 2	
IN THE TOWNSHIP OF LONG POND SOMERSET COUNTY	
SURVEY	
SHEET 4 OF 7	AUGUSTA, MAINE MAY 1963

91-60

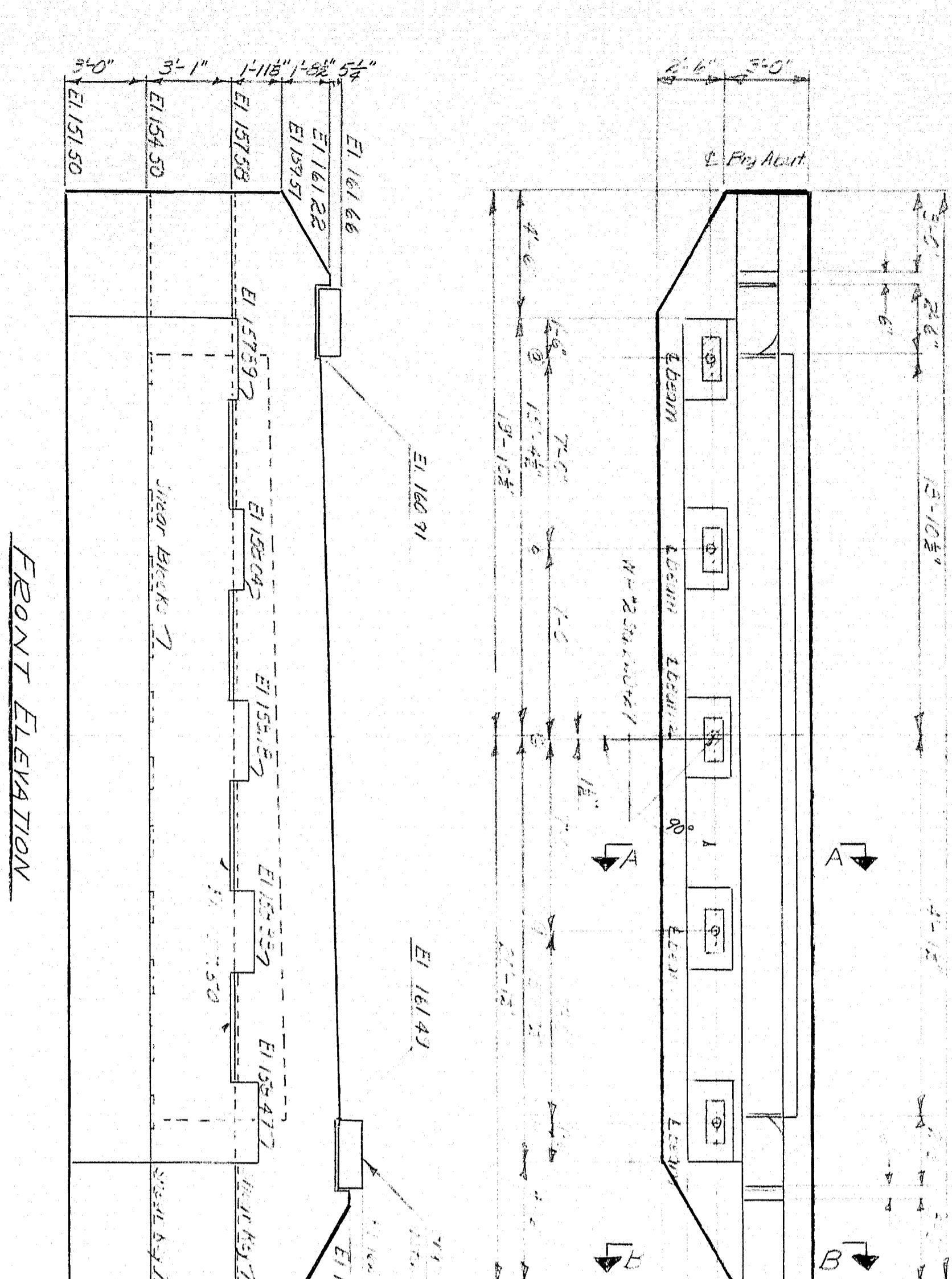




PLAN ABUT. No. 1

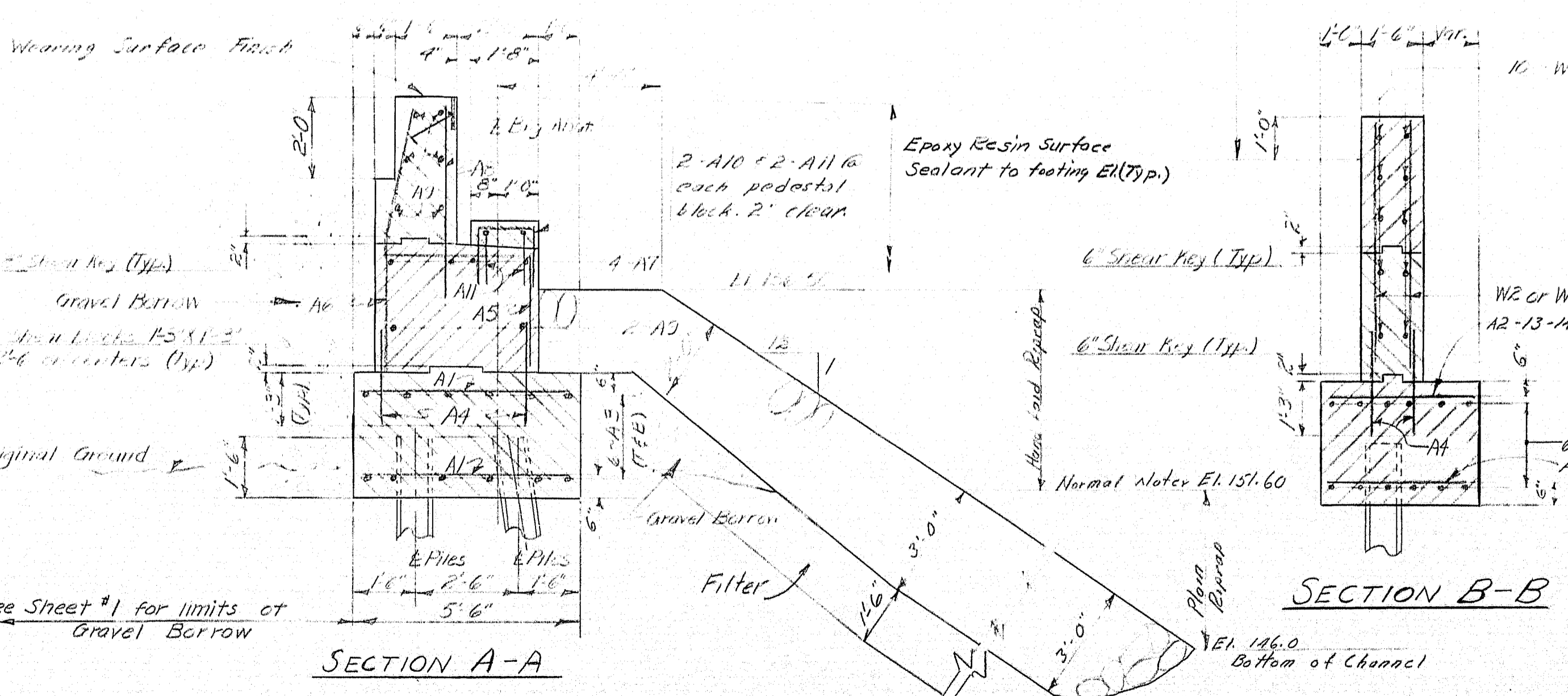


PILE PLAN

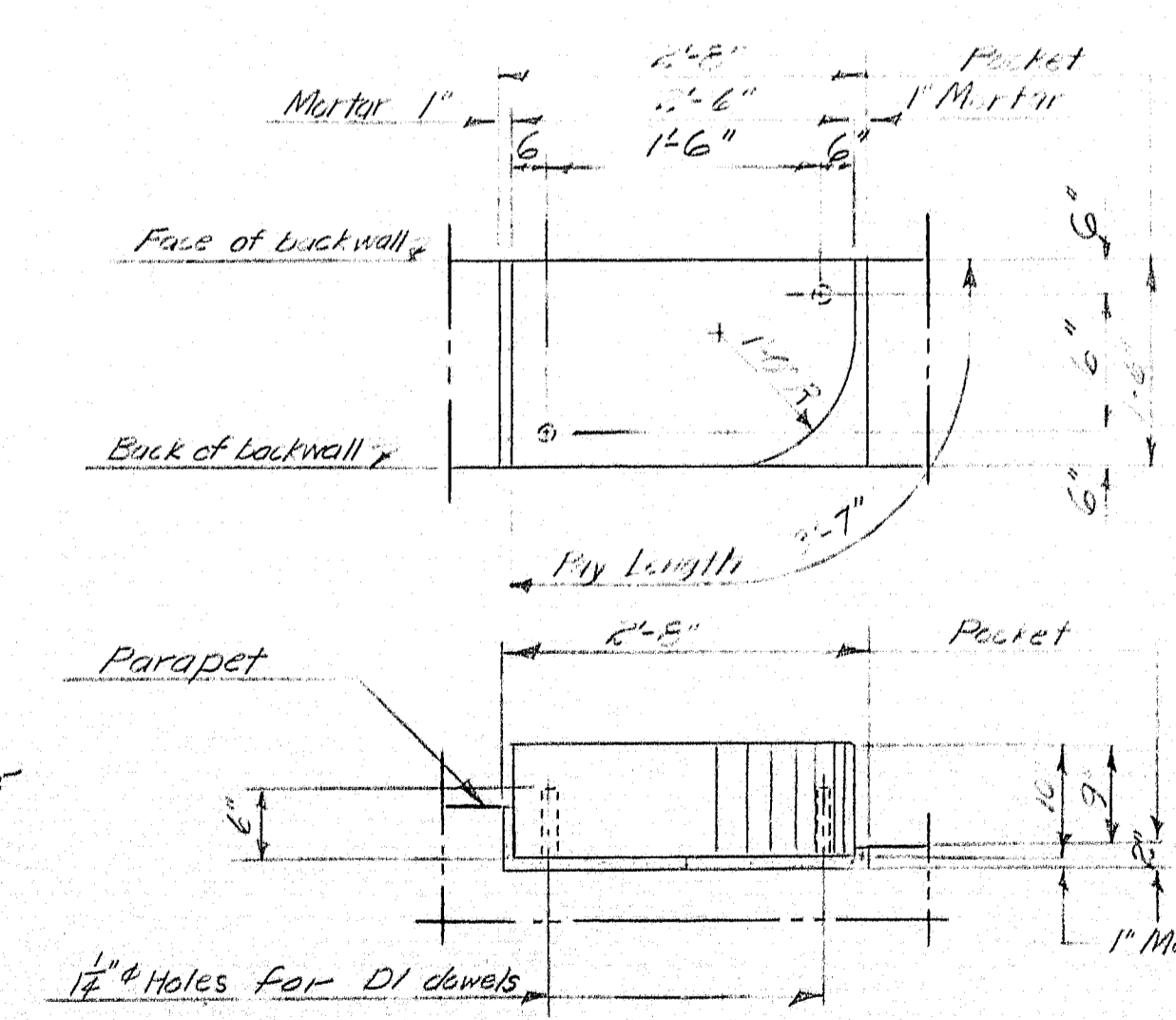


PLAN ABUT. No. 2

NOTE: Reinforce same as for Abut. No. 1



SECTION B-B



ABUTMENT NOTES

All reinforcement to be 3" clear. Notes notes.
 Piles to be 10 HP 42"
 Abutment "1" 9 piles. Estimated length 70'-0"
 Abutment "2" 9 piles. Estimated length 70'-0"
 Pile shown thus \perp to be battered 3"
 the direction indicated by the arrow.
 Maximum pile load equals 37 tons.
 Piles to be driven to ledge or practical refusal to develop end bearing.
 Payment for underpinning abutment foundations shall be considered incidental to contract items.

NOTE: Grout DI dowels into 1/2" holes in stone prior to setting stone on backwall. Drill 1/2" holes in backwall to suit DI dowels. Payment for drilling for and grouting DI dowels to be included in price for Item 705-14, Reinforcing Steel, Placing.

DESIGN - H. L. D.	BRIDGE NO.
TRACE - D. E. G. H. M.	SURVEY
CHECK - H. L. D.	PLOT

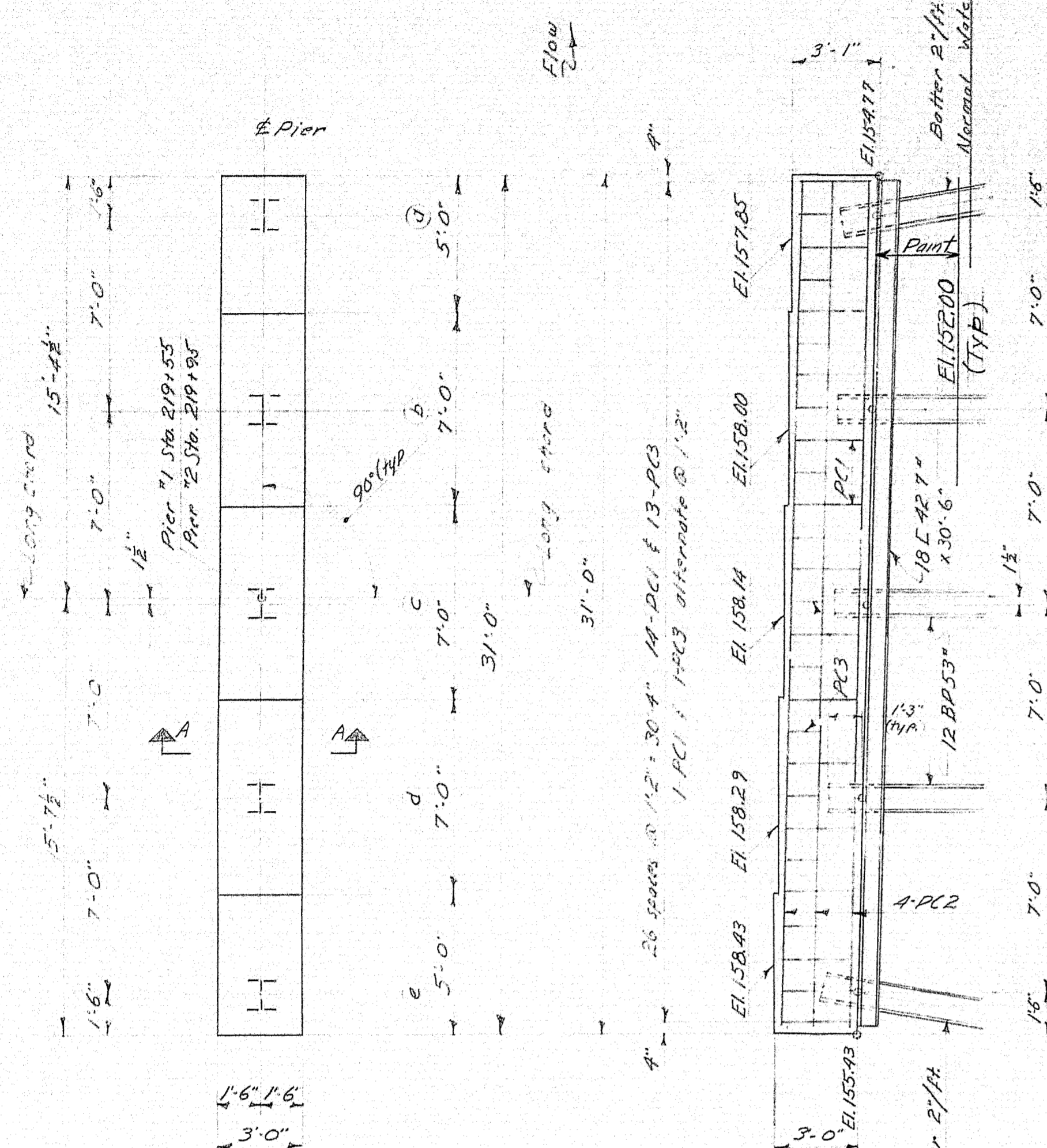
STATE HIGHWAY COMMISSION
BRIDGE DIVISION

PARLIN STREAM BRIDGE NO. 2

IN THE TOWNSHIP OF
LONG POND
SOMERSET COUNTY

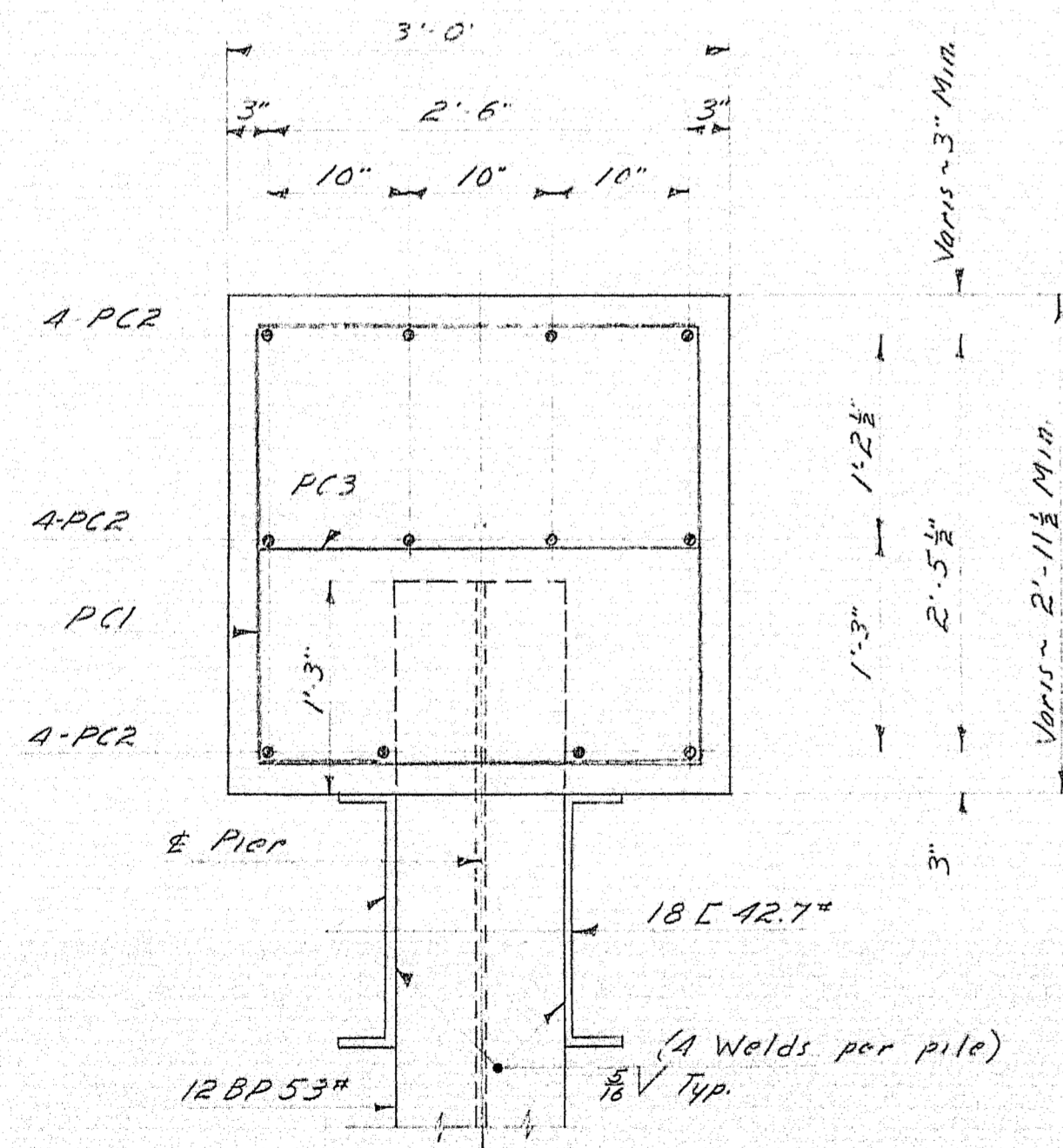
ABUTMENTS

SHEET 5 OF 9 AUGUSTA, MAINE JULY 1963



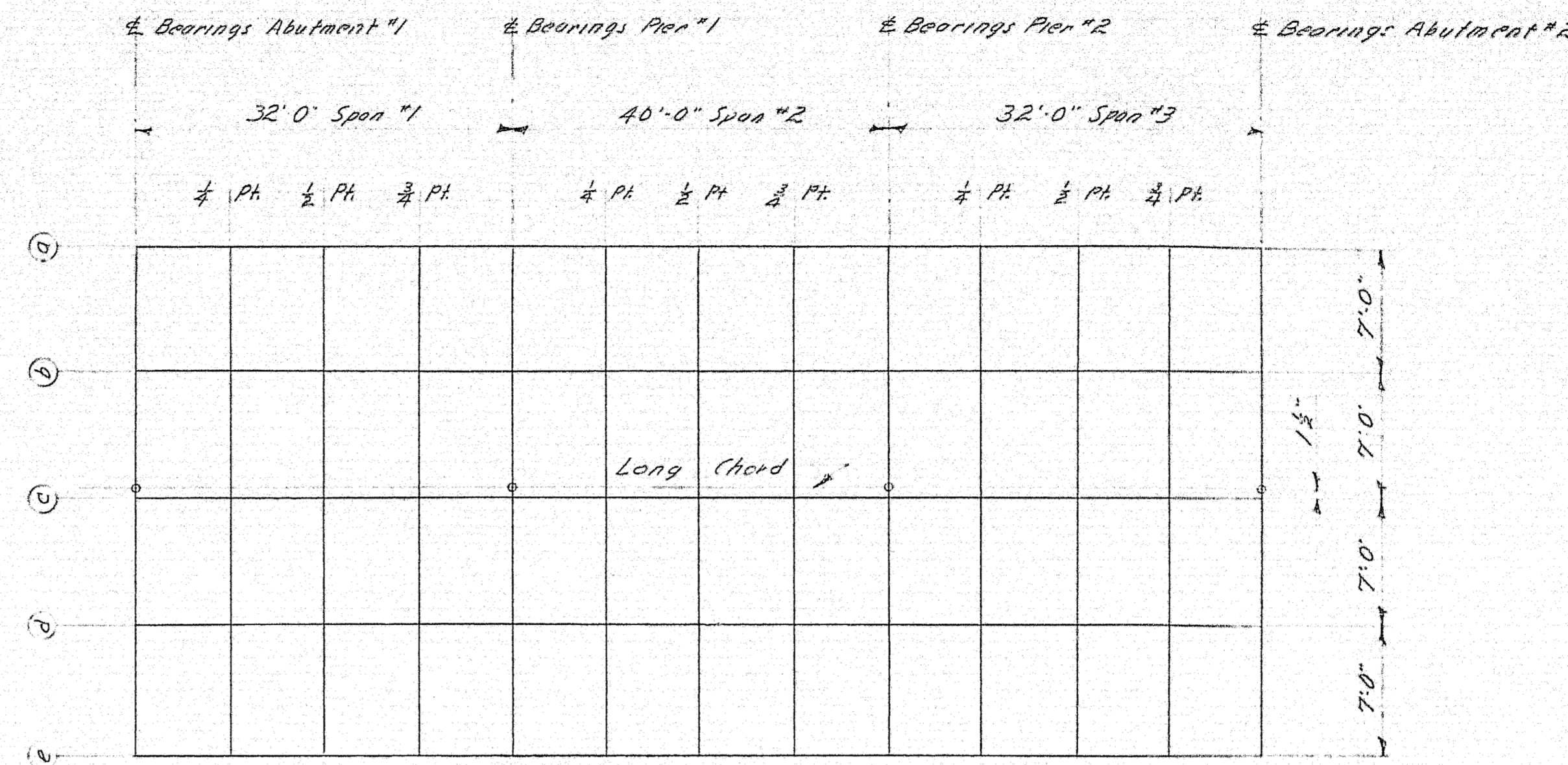
PLAN PIER NO. 1

NOTE: Pier No. 2 the same



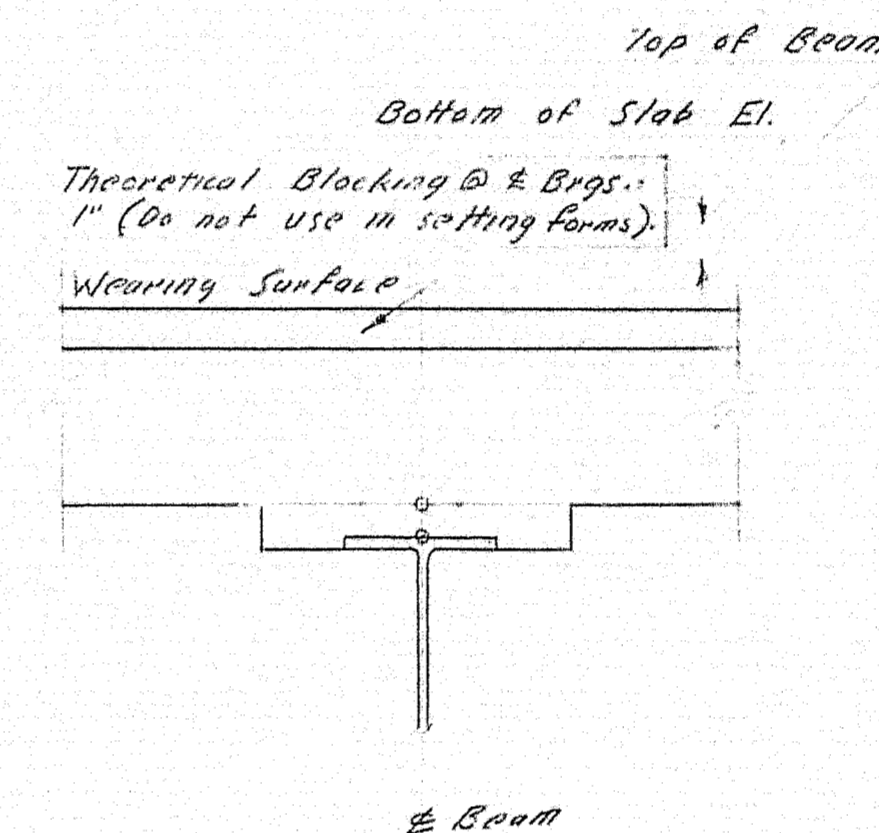
SECTION A-A

FRONT ELEVATION



BLOCKING DIAGRAM

BOTTOM OF SLAB ELEVATIONS						
	POINT	LINE "A"	LINE "B"	LINE "C"	LINE "D"	LINE "E"
SPAN-1	# Brg. Abut.	160.08	160.23	160.37	160.51	160.66
	# Point	160.09	160.24	160.38	160.52	160.67
	# Point	160.10	160.25	160.39	160.53	160.68
	# Point	160.09	160.24	160.38	160.52	160.67
SPAN-2	# Brg. P. 1	160.08	160.23	160.37	160.51	160.66
	# Point	160.09	160.24	160.38	160.52	160.67
	# Point	160.10	160.25	160.39	160.53	160.68
	# Point	160.09	160.24	160.38	160.52	160.67
SPAN-3	# Brg. P. 2	160.08	160.23	160.37	160.51	160.66
	# Point	160.09	160.24	160.38	160.52	160.67
	# Point	160.10	160.25	160.39	160.53	160.68
	# Point	160.09	160.24	160.38	160.52	160.67
	# Brg. Abut.	160.08	160.23	160.37	160.51	160.66



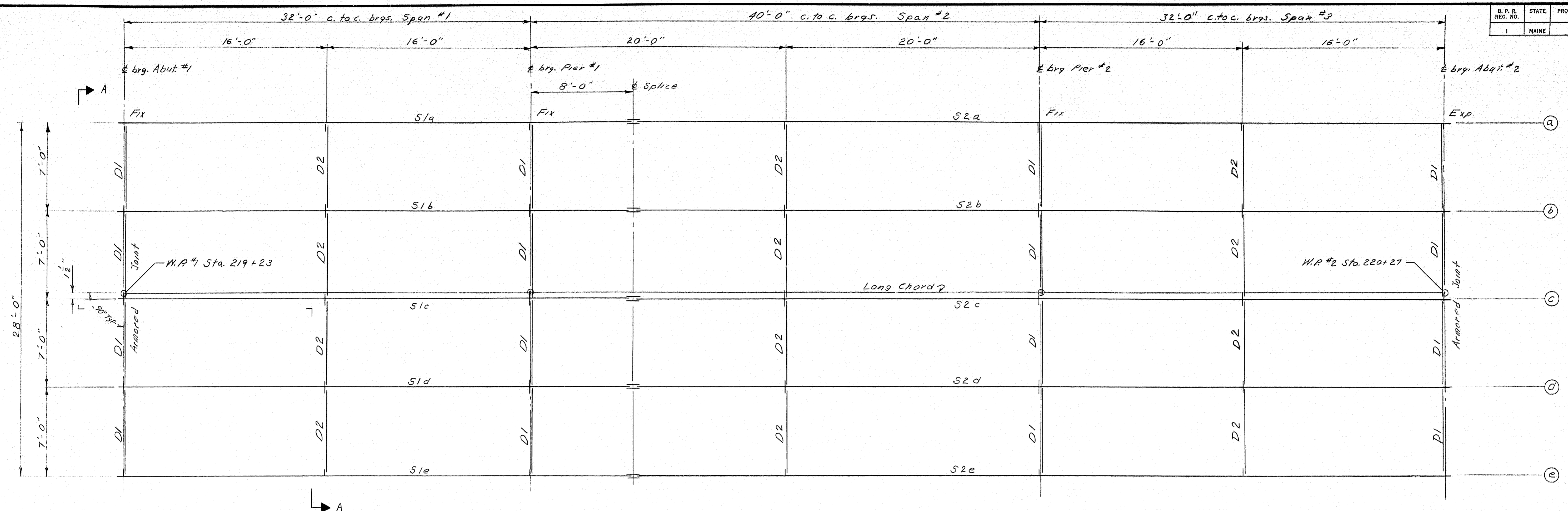
BLOCKING DETAIL

PILING NOTES:

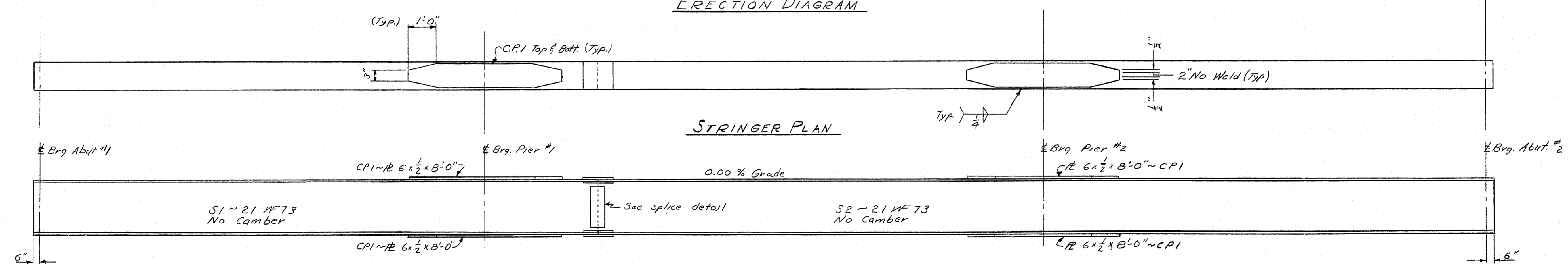
- Pier No. 1 5 Piles required Estimated Length 75'-0"
- Pier No. 2 5 Piles required Estimated Length 75'-0"
- All piles to be 12 BP 53"
- Before piles are driven they shall be treated with Epoxy Paint for a distance of 2'-0" from the top end
- Maximum Pile Load = 47 tons
- Piles to be driven to bottom or refusal
- All reinforcing steel to be 2" clear
- Chamfer all exposed edges of concrete 1/4"
- If pier piles are placed for the contractors convenience in accordance with article 708.4 of supplemental specifications of 1960 the piles shall be located at least 8'-0" below area to be treated with epoxy paint
- See special provision for specification on epoxy Item 801-12
- Payment for 18 E 42.7" shall be included in the structural steel Items 702-103 & 702-104
- Surfaces within 2 inches of any weld location shall be free from any paint epoxy resin or any other material that would prevent proper welding. Field painting is not a requirement of this contract
- After the 18 E 42.7" are welded to the piles and the concrete pier caps are placed the entire area between elevation 152.00 and the bottom of the concrete pier caps as shown on the plans shall receive one coat of red lead paint
- Payment for this field painting shall be considered incidental to Items 702-103 and 702-104 structural steel

BLOCKING NOTE:

In order that the wearing surface may conform to the profile and cross sections shown on these plans, the accompanying table of "Bottom of Slab Elevations" is given. These elevations which are computed to compensate for dead load deflections must be set before slab forms are to be started.

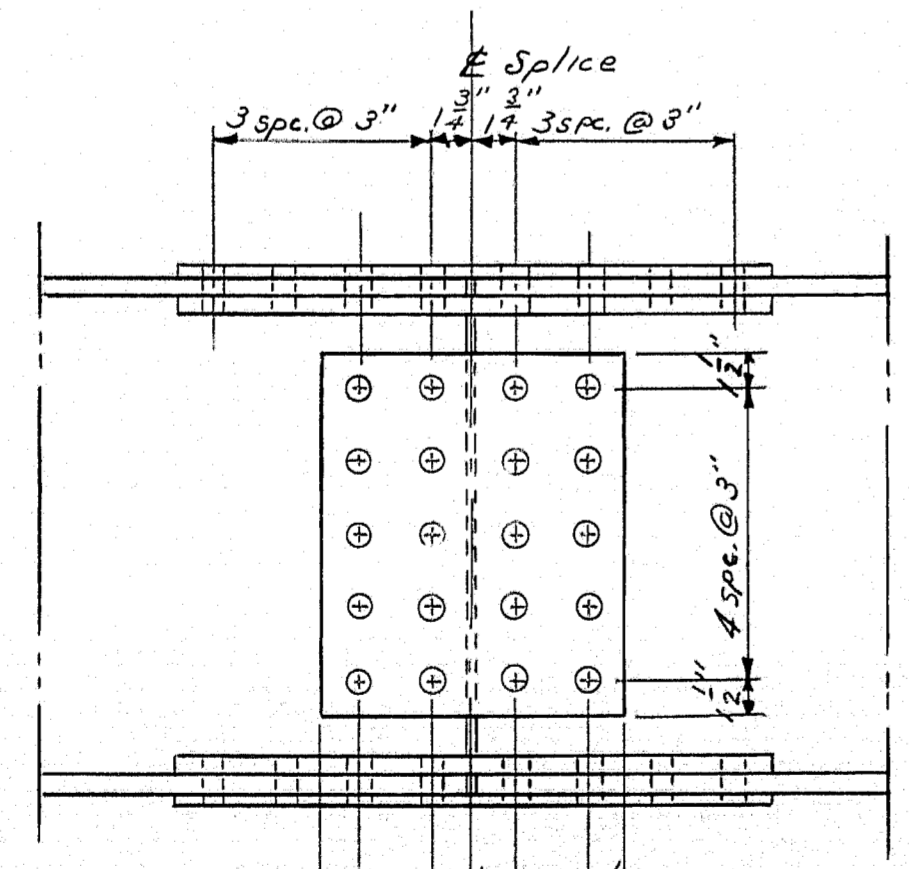


ERECTOR DIAGRAM

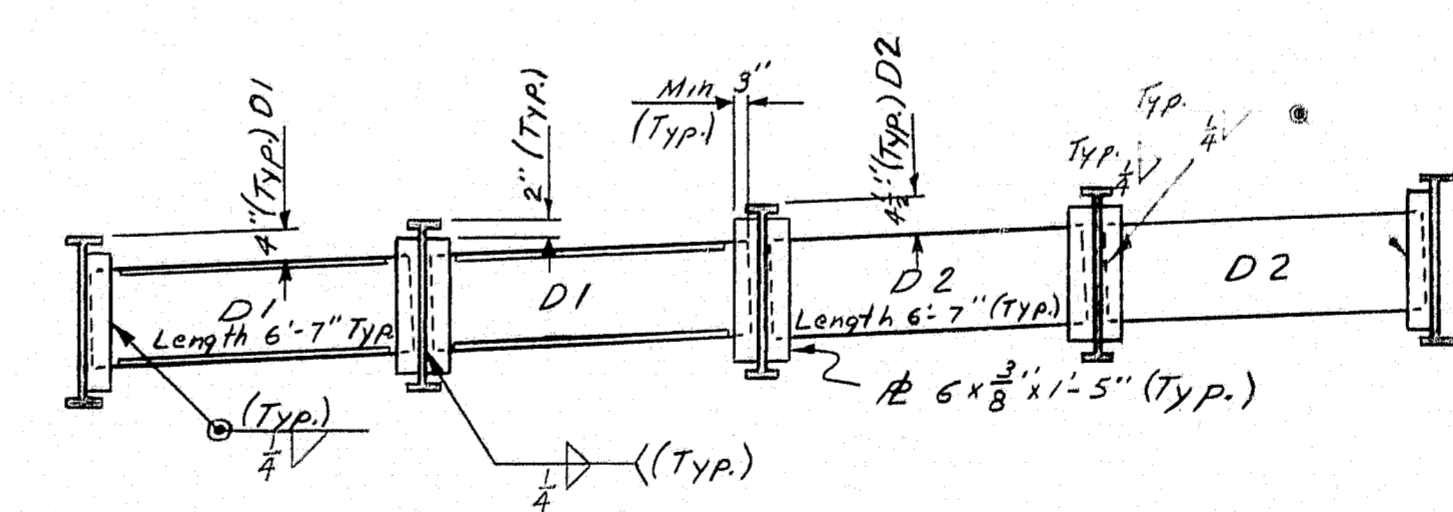
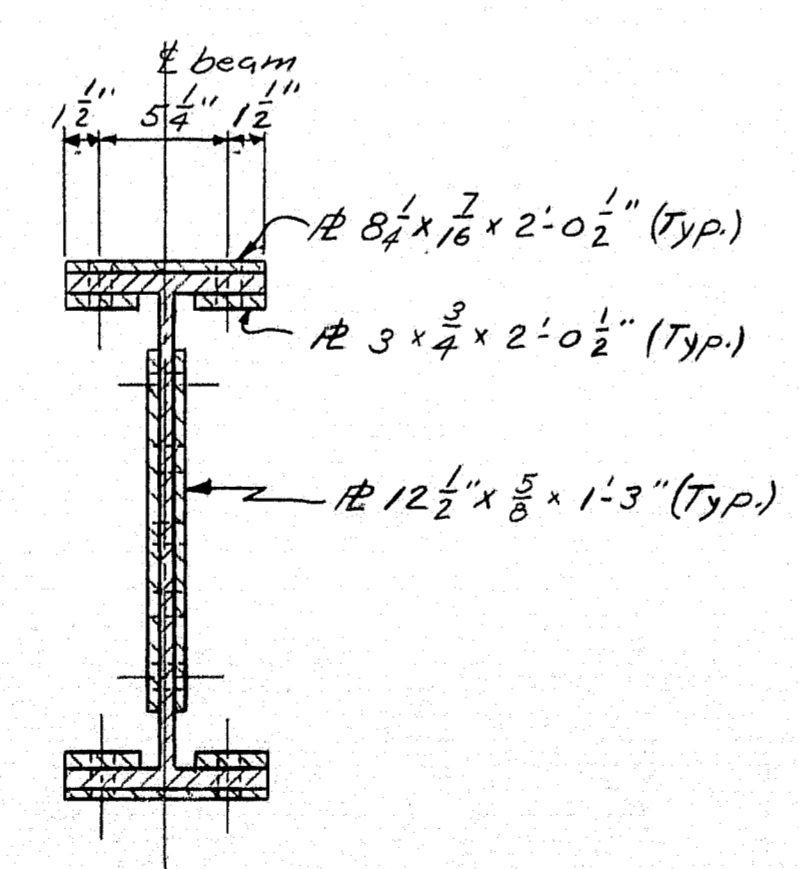


STRINGER PLAN

ELEVATION

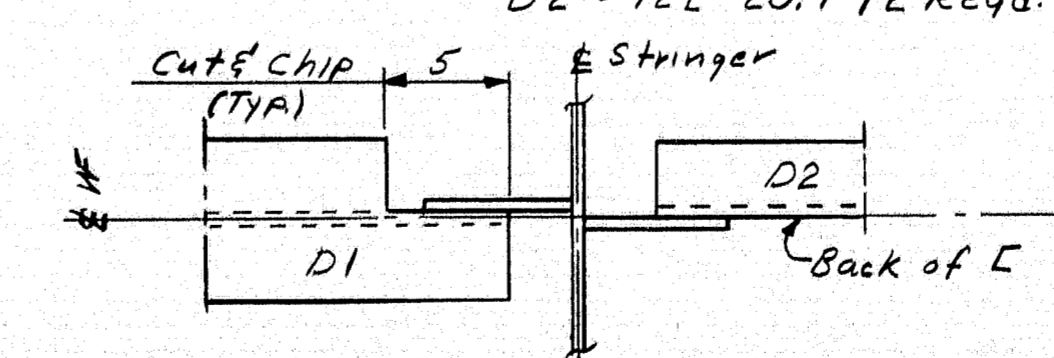


NOTE: All connections use 3/4" High Strength bolts.
All holes to be 1/16" for bolts.
5 Splices Required.



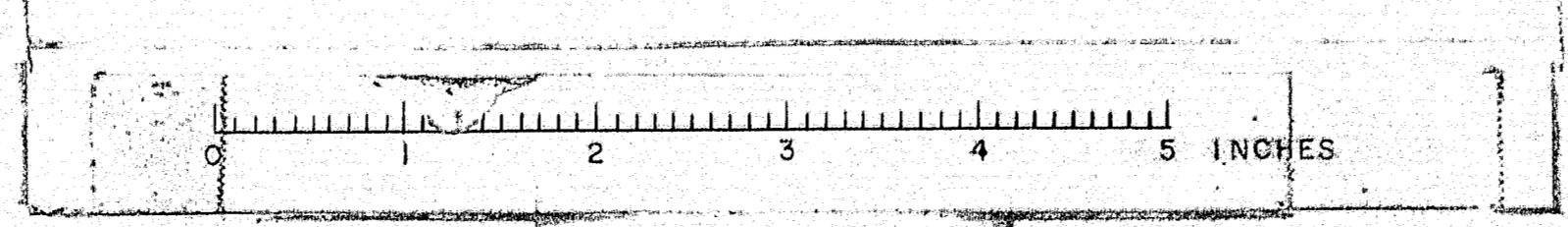
SECTION A-A

NOTE: Diaphragms D1 ~ 12 W 27 16 Req'd.
D2 ~ 12 C 20.7 12 Req'd.

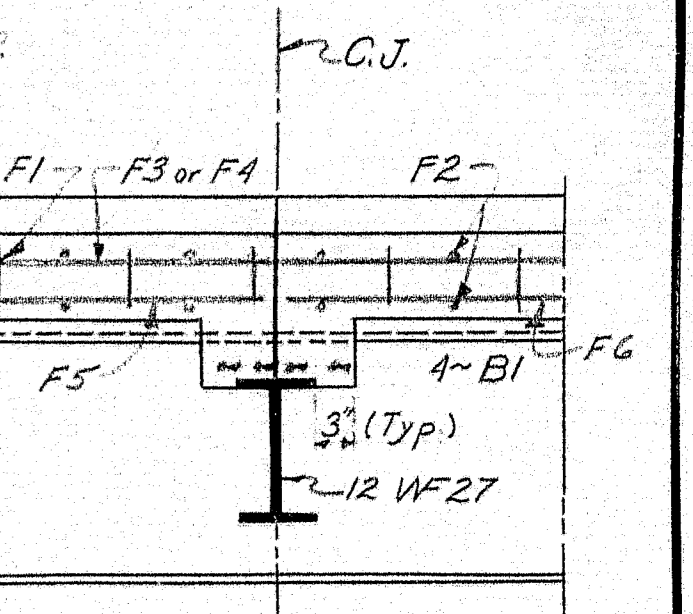


1. All dimensions are in feet and inches.
2. All dimensions are to center of gravity.
3. For structural steel, use AISC specifications.
4. All dimensions are to center of gravity.
5. See sheet 4 for structural steel classification.
6. See sheet 6 for payment of 18 E 42.7"
7. Total estimated weight of structural steel is 58000 lbs. including drains.

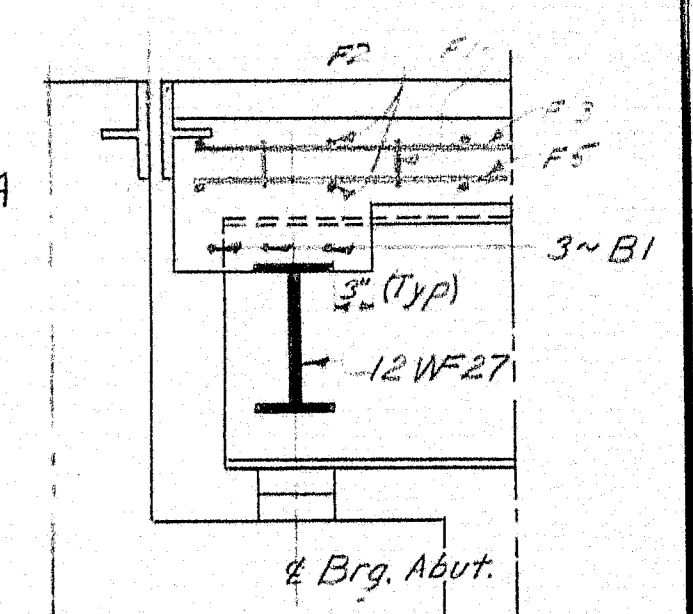
DESIGN - H. L. D. TRACE - N. E. BLODEAU CHECK - [Signature]	BRIDGE NO. SURVEY - PLOT -
STATE HIGHWAY COMMISSION BRIDGE DIVISION	
PARLIN STREAM BRIDGE NO. 2	
IN THE TOWNSHIP OF LONG POND SOMERSET COUNTY	
STRUCTURAL STEEL	
SHEET 7 OF 9 AUGUSTA, MAINE MAY 1963	



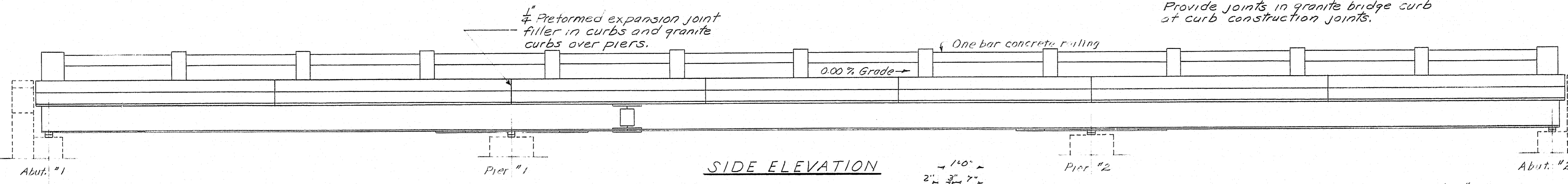
C.J.



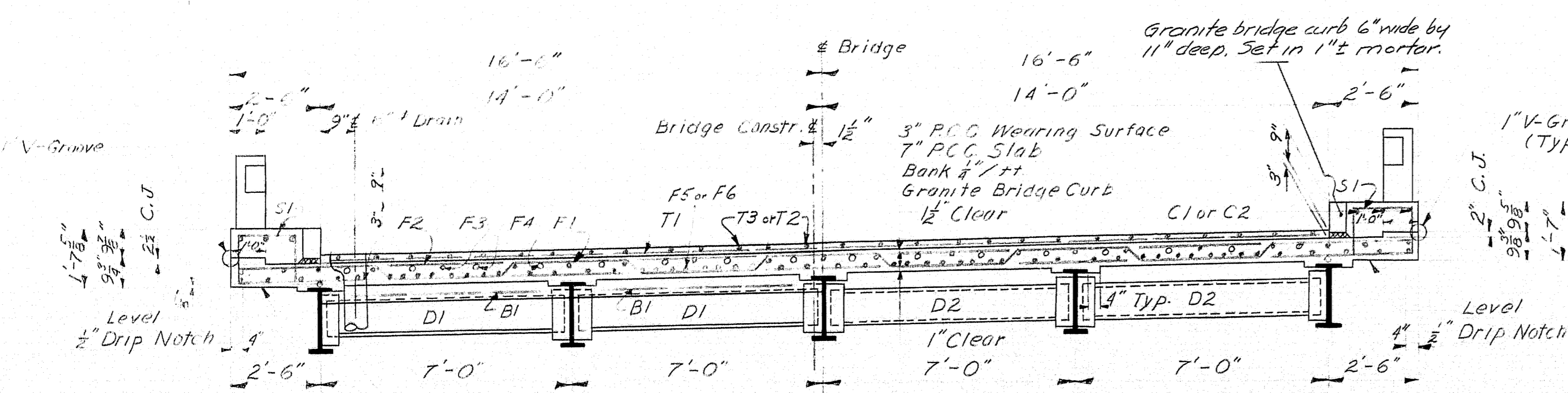
1" Abut. #1
1" Abut. #2 @ 45°

SECTION A-A

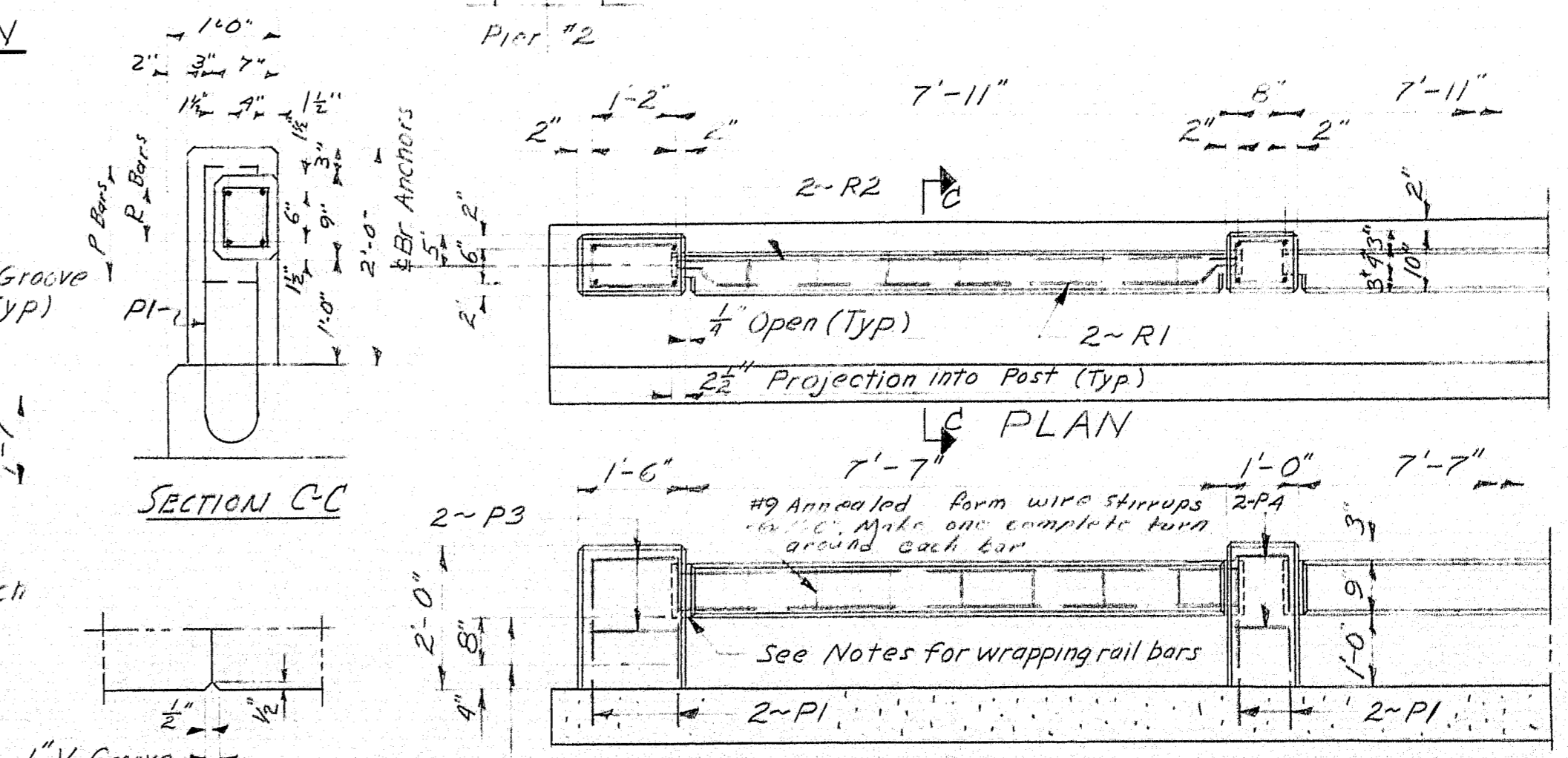
PLAN



SIDE ELEVATION

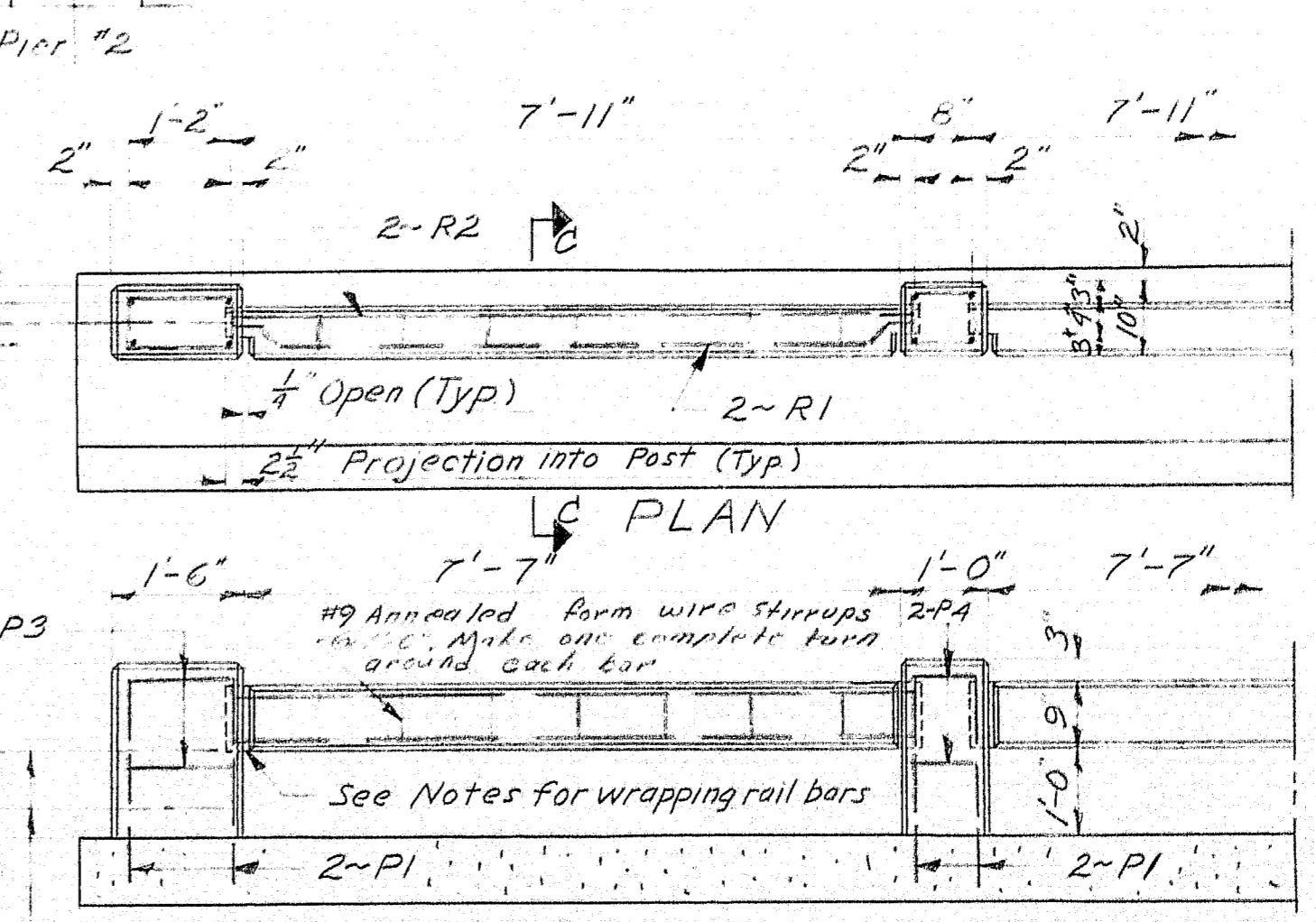


TYPICAL TRANSVERSE SECTION



SECTION C-C

V-GROVE DETAIL



ELEVATION
RAIL DETAILS

Concrete Placing Sequence ~
Span #2 to be placed first.
Spans 1's to be placed starting
at abut ends and working to piers.
Chamber all exposed edges
of concrete $\frac{1}{2}$ ".
Punch construction joints in
new curbs with a suit-
able grade of asphalt paint.
Concrete rail bars to be precast.
The ends of all rail bars are to
be milled with a layer of
heavy roofing, then cover with
concrete and the forms placed
at required position to be ready
for final pour.
For drain detail see
Standard Details BD-104-62
6" Drains Reg.
For armored joint detail
see Standard Detail BD-104-62
2-Units type A & 2-Units type B
Required.
Sealing and planing of bridge
Anchor for type A Guard Railings
see details to item 701-46.

DESIGN- <i>A.L.D.</i>	BRIDGE NO.
TRACE- <i>D.E.G.</i>	SURVEY-
CHECK- <i>A.B.B.</i>	PLAN-

STATE HIGHWAY COMMISSION
BRIDGE DIVISION

PARLIN STREAM BRIDGE NO.2

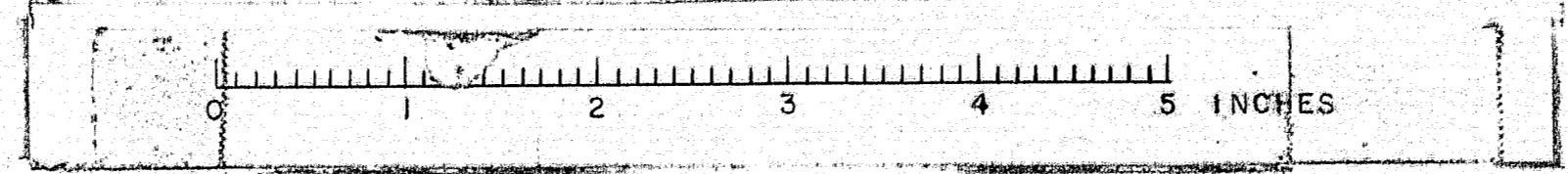
IN THE TOWNSHIP OF

LONG POND

SOMERSET COUNTY

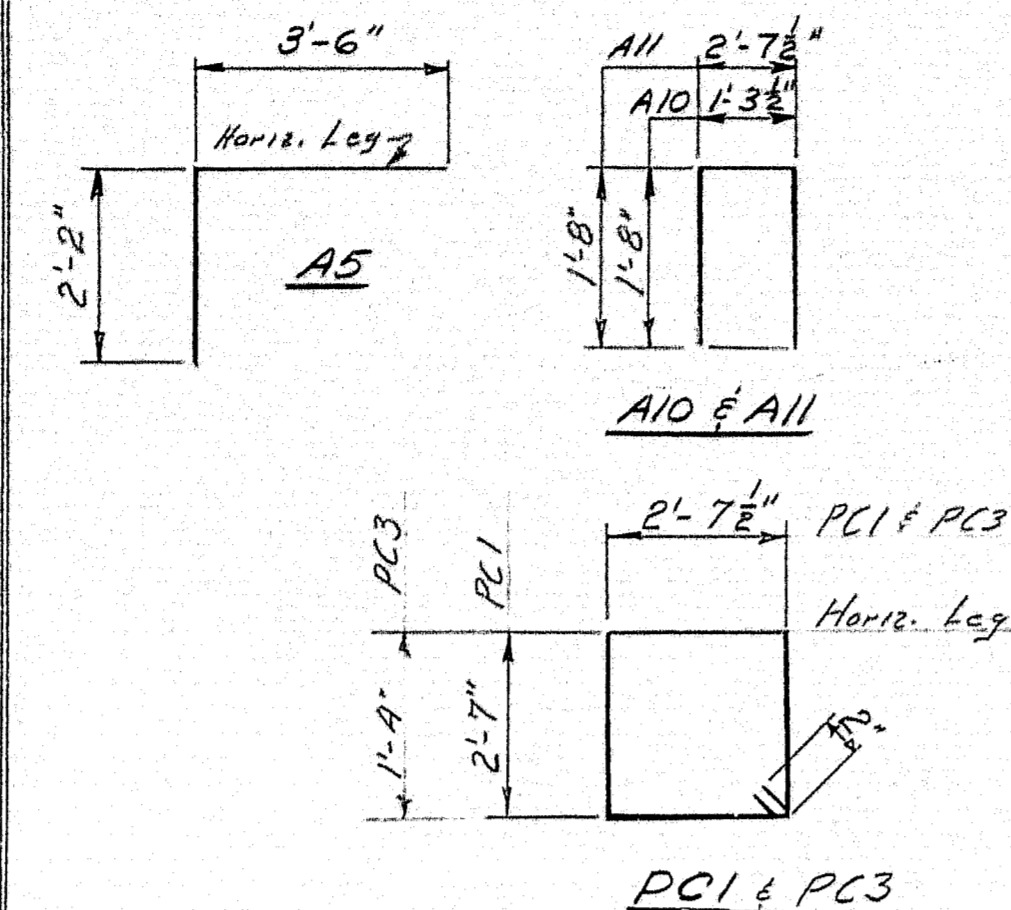
SUPER STRUCTURE

SHEET 3 of 9 AUGUSTA, MAINE JULY 1963



B. P. R. REG. NO.	STATE	PROJECT NUMBER	SHEET NO.	TOTAL SHEETS
1	MAINE			

PIERS & ABUTMENTS



Note: All dimensions to \bar{E} of bars

BENT

Mark	Size	Number	Length	Location
PCI	"4	28	10'-9"	Pier cap both piers
A10	"1	20	4'-9"	Abut. bearing pedestals
A11	"4	20	6'-0"	" " "
A5	"5	42	5'-8"	" bridge seats
PC3	"4	26	8'-3"	Pier Cap (Both Piers)

STRAIGHT

A9	#4	16	30'-6"	Backwall # br seats horizontal
A6	#5	42	6'-2"	Br. wall vertical
A7		8	30'-6"	Br. seats horizontal
A8		42	4'-11"	Backwall vertical
W1		40	5'-9"	Wings horizontal
W2		24	6'-2"	" vertical
W3	#5	16	5'-0"	" "
A1	#6	128	5'-0"	Abut. footings
A2	#6	8	2'-9"	" "
A3	#6	48	20'-6"	" " Spliced
A4	#5	124	3'-0"	" "
D1	#6	8	1'-0"	Granite curb to abut.

C. B. CO., NO. 44-302 20216

DESIGN- <i>H.L.D.</i>	BRIDGE NO.
TRACE-	SURVEY-
CHECK- <i>A.C.P.</i>	PLOT-

STATE HIGHWAY COMMISSION
BRIDGE DIVISION

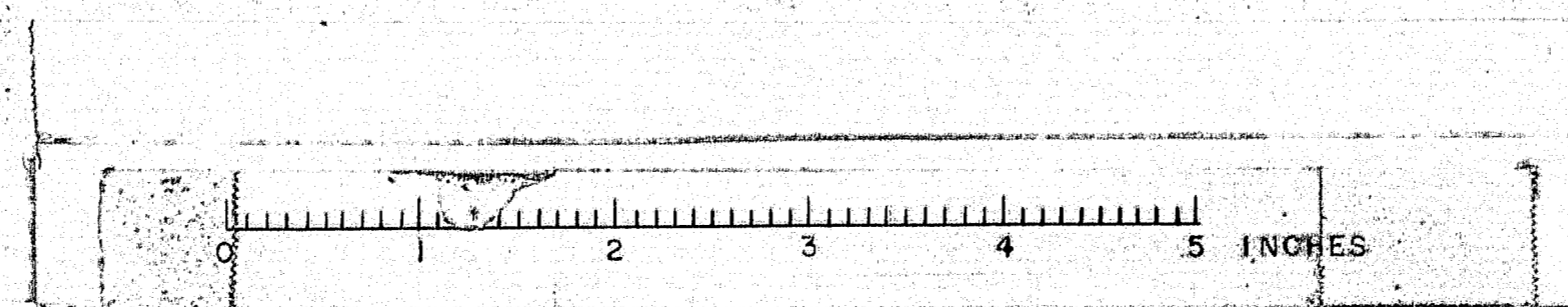
PARLIN STREAM BRIDGE NO. 2

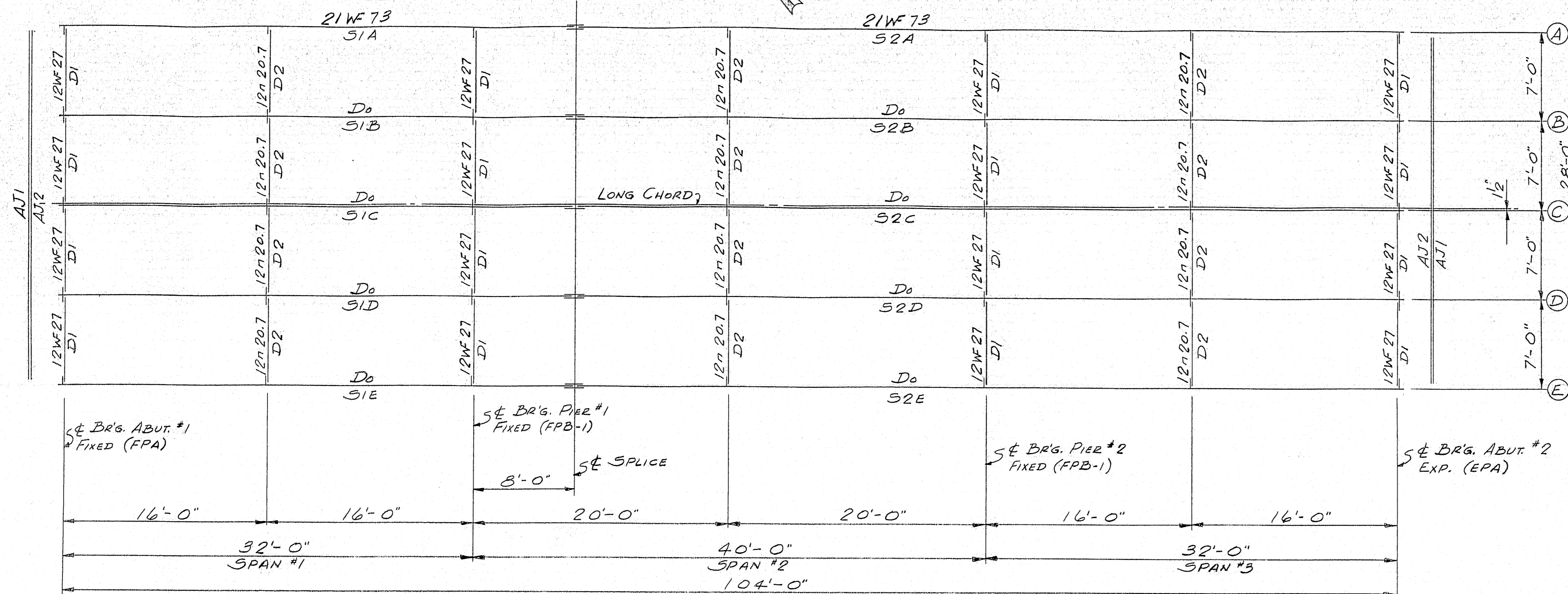
IN THE TOWNSHIP OF
LONG POND
SOMERSET COUNTY

REINFORCING STEEL

SHEET 9 OF 9, AUGUSTA, MAINE JULY 1963

91-65





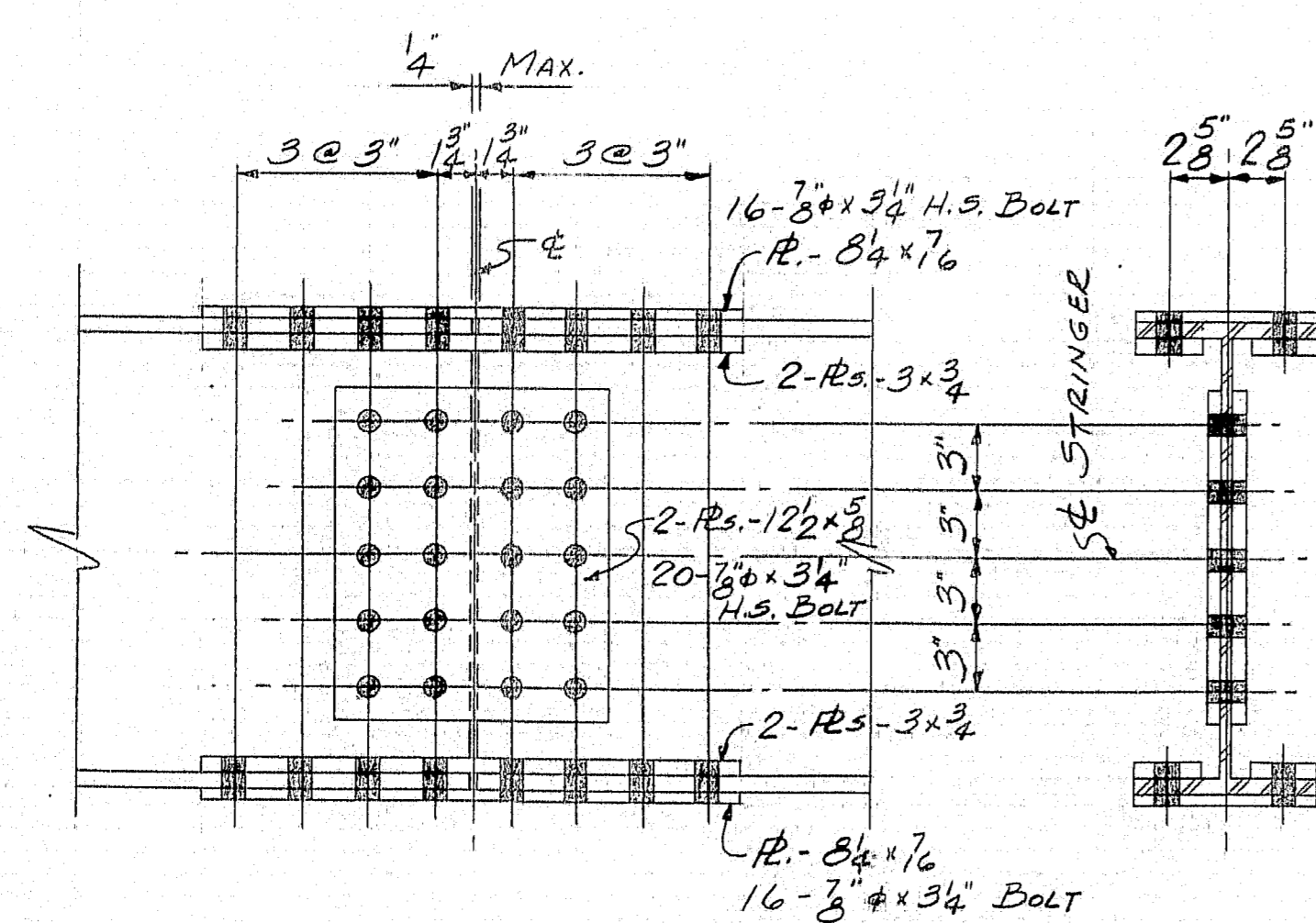
NOTES

STEEL FOR STRINGERS, COVER PLATES, SPLICE PLATES & BEARINGS SHALL BE ASTM A36. ALL OTHER STEEL TO BE ASTM A36 OR A7.

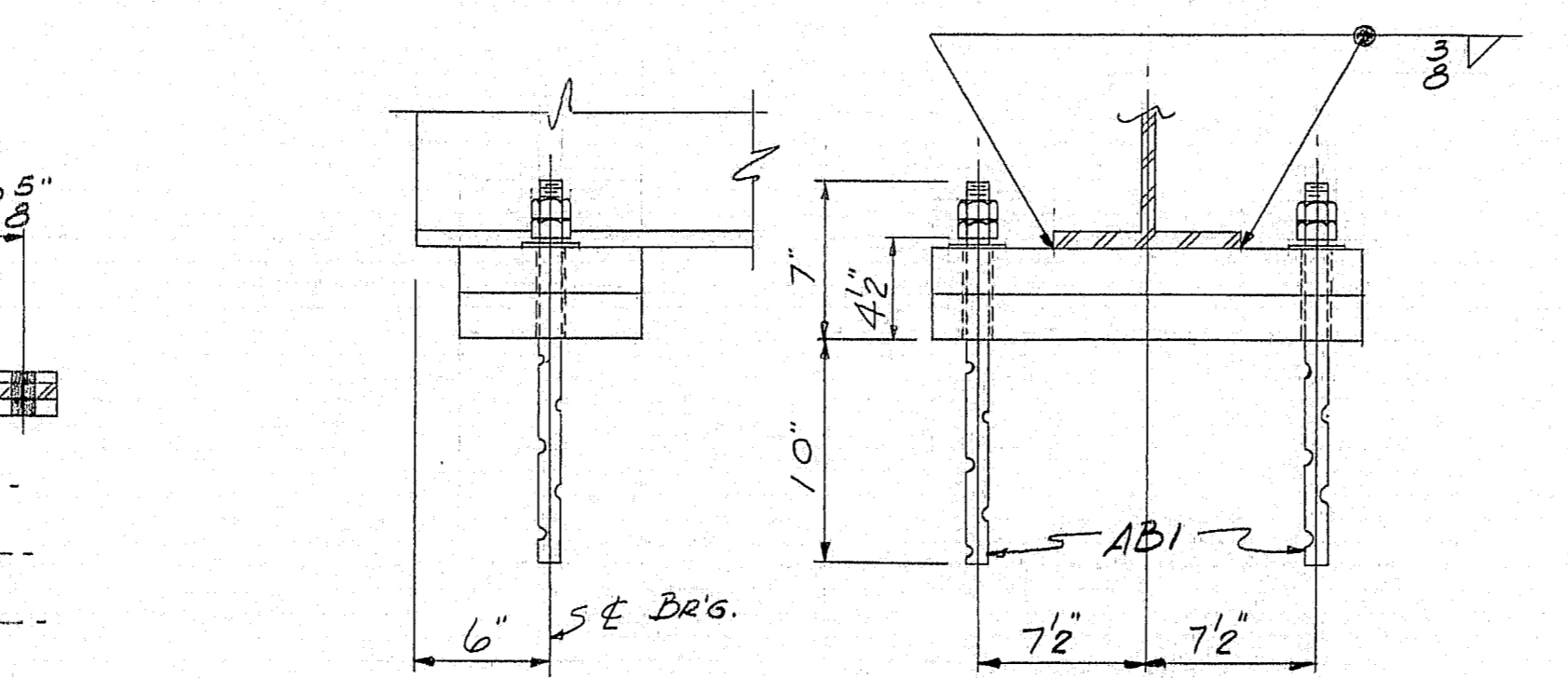
BOLTS FOR SPLICES SHALL BE ASTM A325, 3/4" HEX HEAVY STRUCT. BOLTS W/HEAVY SEMI-FINISHED HEX NUTS & ONE HARDENED ROUND WASHER.

HOLES IN STRINGERS ARE FOR H.S. BOLTS. THEY ARE TO BE FREE FROM BURRS. THERE SHALL BE NO PAINT WITHIN 3" OF SUCH OPEN HOLES. SUB PUNCH OR DRILL 1/8" & REAM ASSEMBLED (NO TEMPLATES) PARTS TO 1/8" & OR DRILL FROM SOLID FOR FIELD CONNECTION. MATCHMARK ALL CONNECTING PARTS BEFORE DISASSEMBLING. SUPPLY ENGINEER WITH A DIAGRAM OF MATCHMARKS.

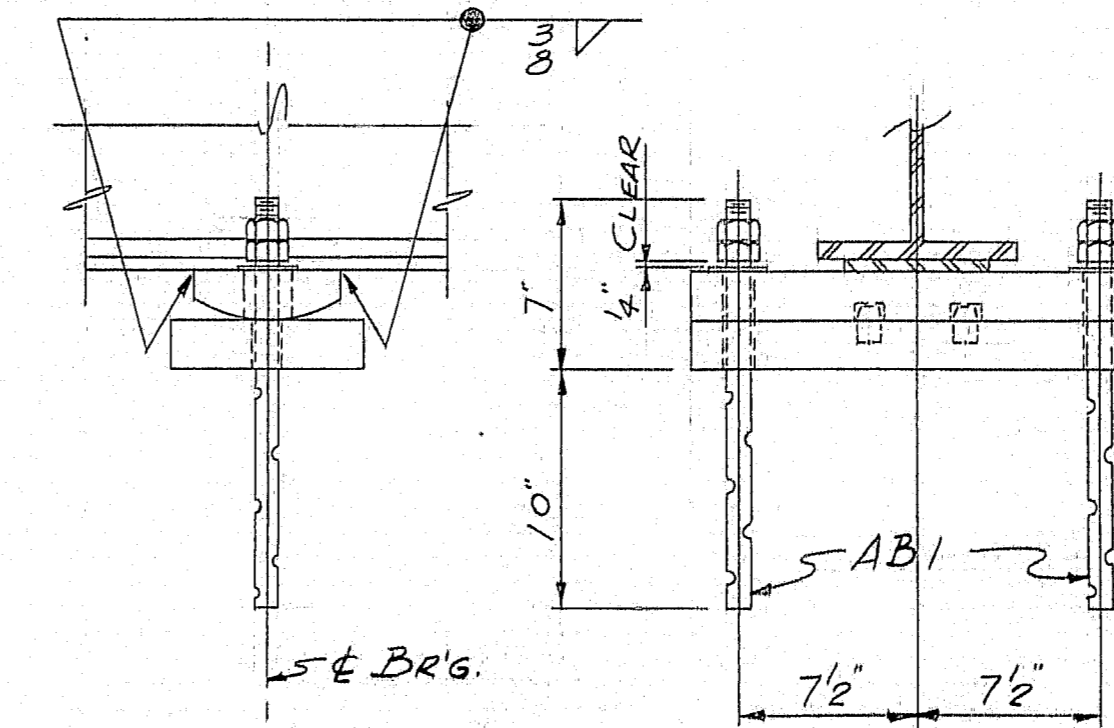
STRINGERS TO BE SET TO 0.00% GRADE BEFORE DRILLING & REAMING SPLICES.



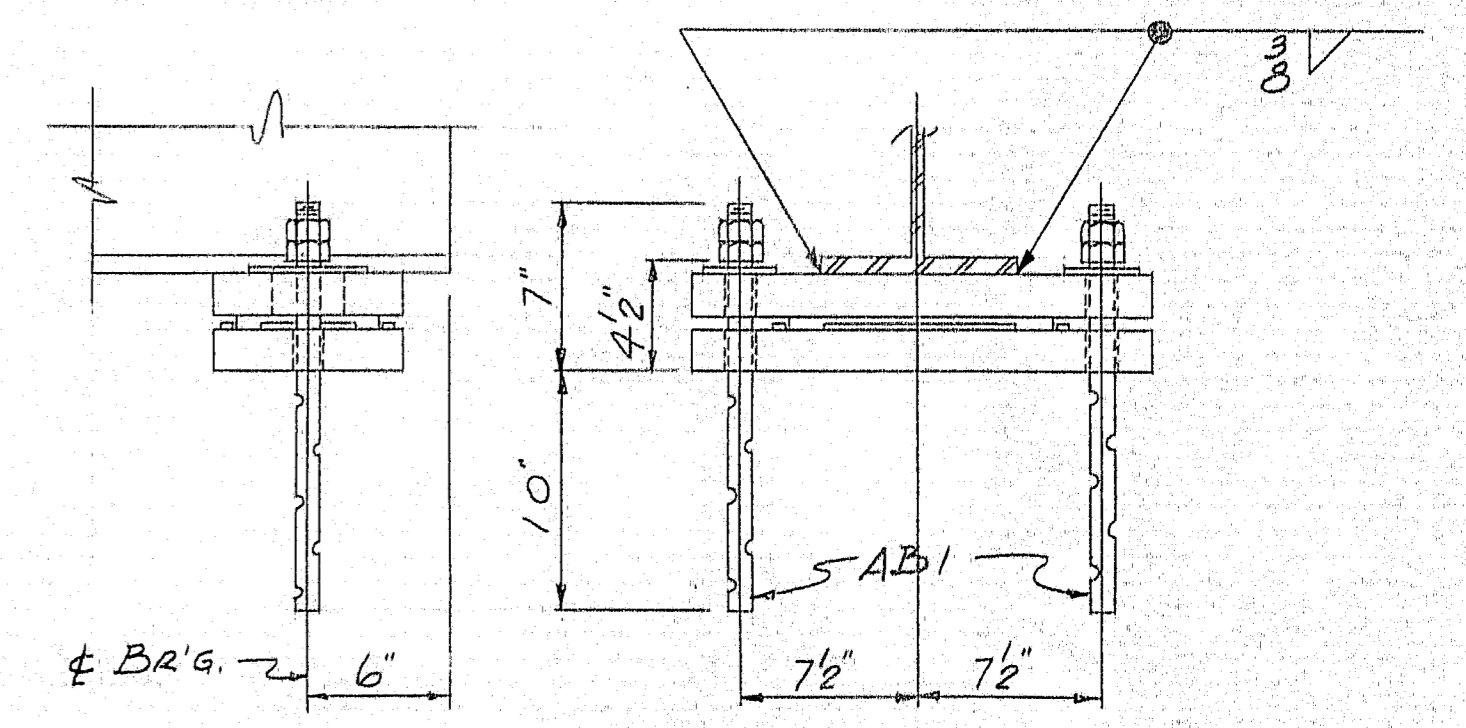
SPLICE DETAIL



FIXED BR'G. (FPA)



FIXED BR'G. (FPB)



EXP. BR'G. (EPA)

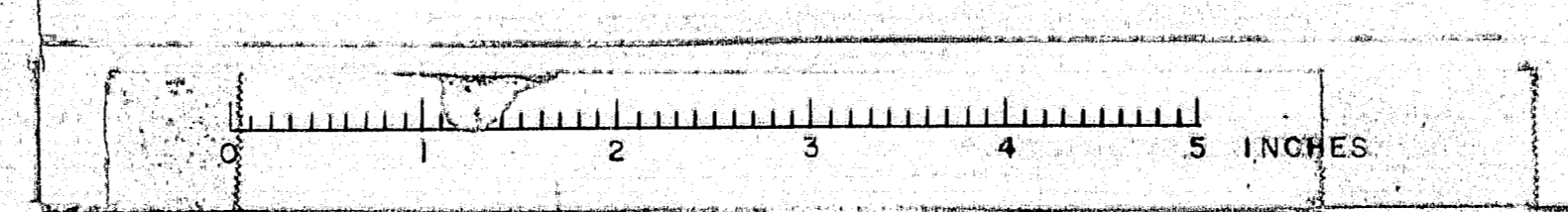
SHOP CONNECTIONS: WELD (E70 ELECTRODE)
FIELD CONNECTIONS: 3/8" H.S. BOLT & WELD
HOLES: 1/8" &
PAINT: STATE OF MAINE SPEC'S.

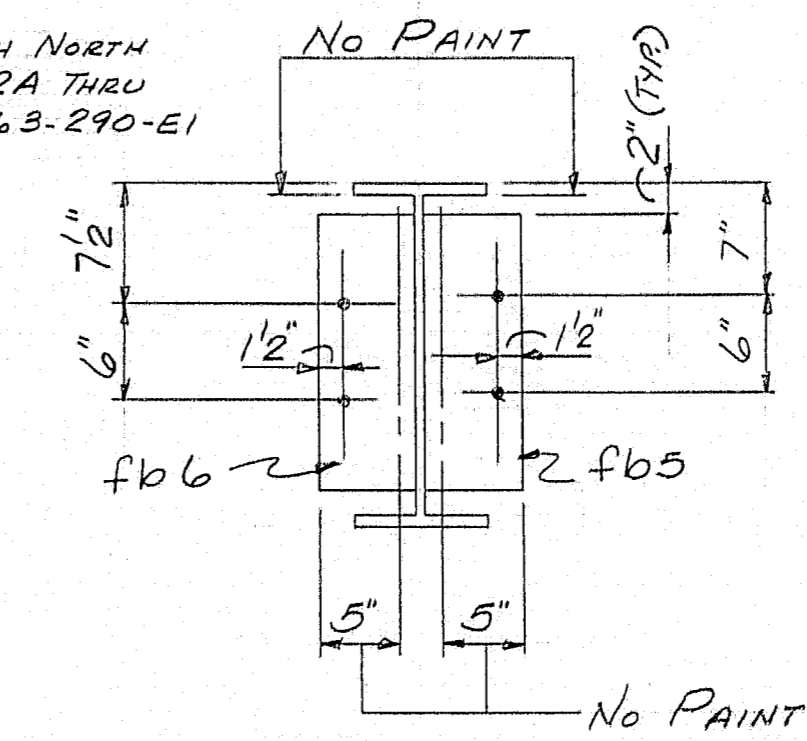
APPD. AS NOTED 3-2-64

FRAMING PLAN & DETAILS

PRINT ISSUE		Bancroft & Martin Rolling Mills Company	
		Brewer, Maine	
		PARLIN STREAM BRIDGE #2	
		LONG POND - SOMERSET COUNTY	
		CUSTOMER CIANCHETTE BROTHERS	
		DESIGNER STATE HIGHWAY COMM.	
		ORDER VERBAL	
		DWG. B63-290-E1	

95-116





SHOP CONNECTIONS: WELD (E70 ELECTRODE)
FIELD CONNECTIONS: WELD & 3" H.S. BOLT
HOLES: 1 1/2" ϕ
PAINT: STATE OF MAINE SPEC'S.

STRINGERS

PRINT ISSUE		<i>Bancroft & Martin Inc.</i> <i>Brewer, Maine</i>	
3	CUST	3-4-64	PARLIN STREAM BRIDGE #2 LONG POND - SOMERSET COUNTY
5	SHOP	3-4-64	
2	F.A.	2-27-64	
DRAWN	2-24-64 R.A.M.		CUSTOMER <u>GIANCHETTE BROTHERS</u> DESIGNER <u>STATE HIGHWAY COMM.</u>
REVISION			
REVISION			
REVISION			ORDER <u>VERBAL</u> DWG. <u>B63-290-54</u>

95-118

