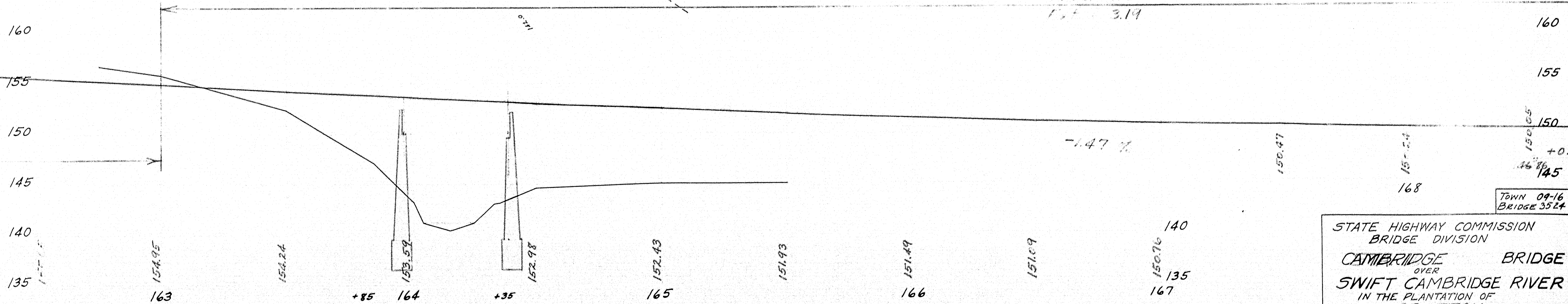


NOTES  
 STREAM - Extreme high water of 1936 Elev. 1408, low Elev. 1408.  
 FOUNDATION - Coarse gravel and small boulders. Soundings at edge of water penetrated 7' and 8' slowly thru sand + gravel.

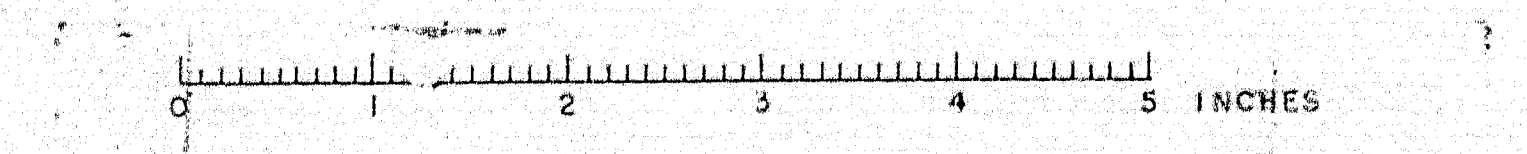


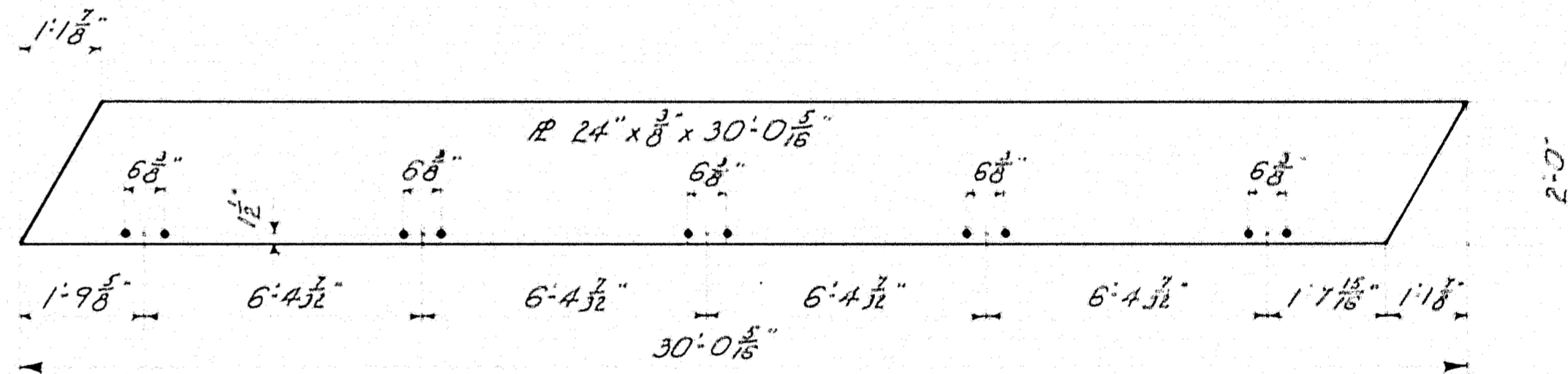
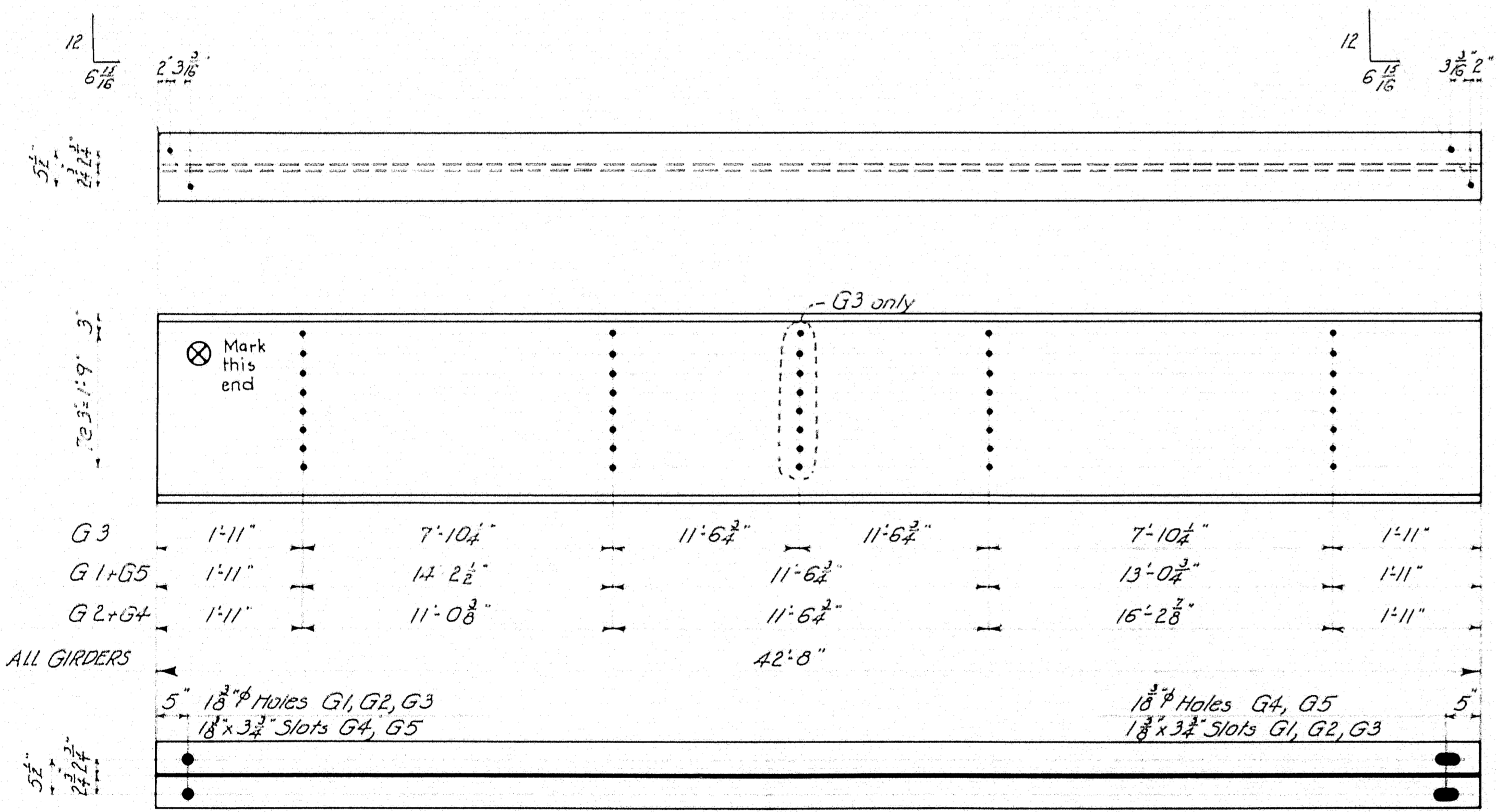
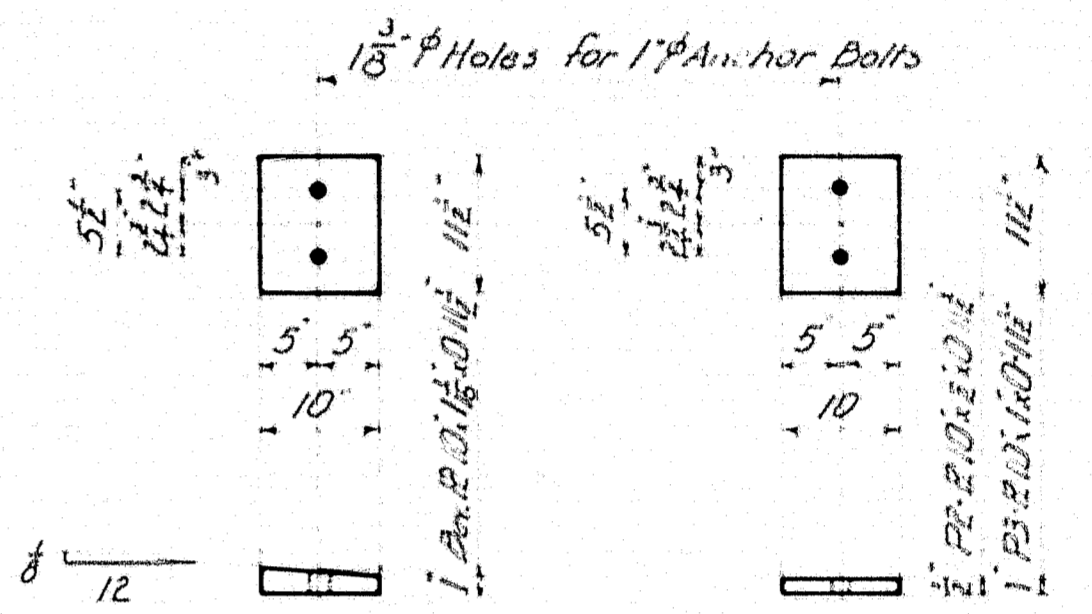
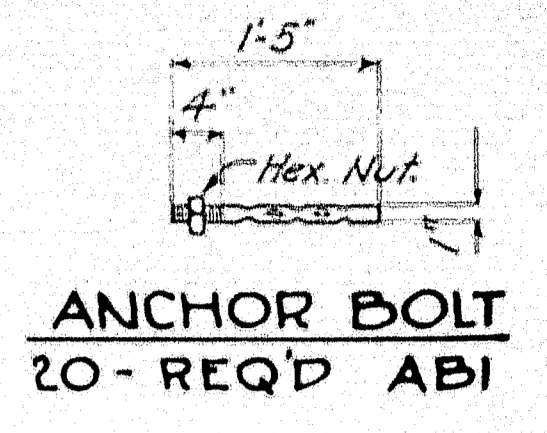
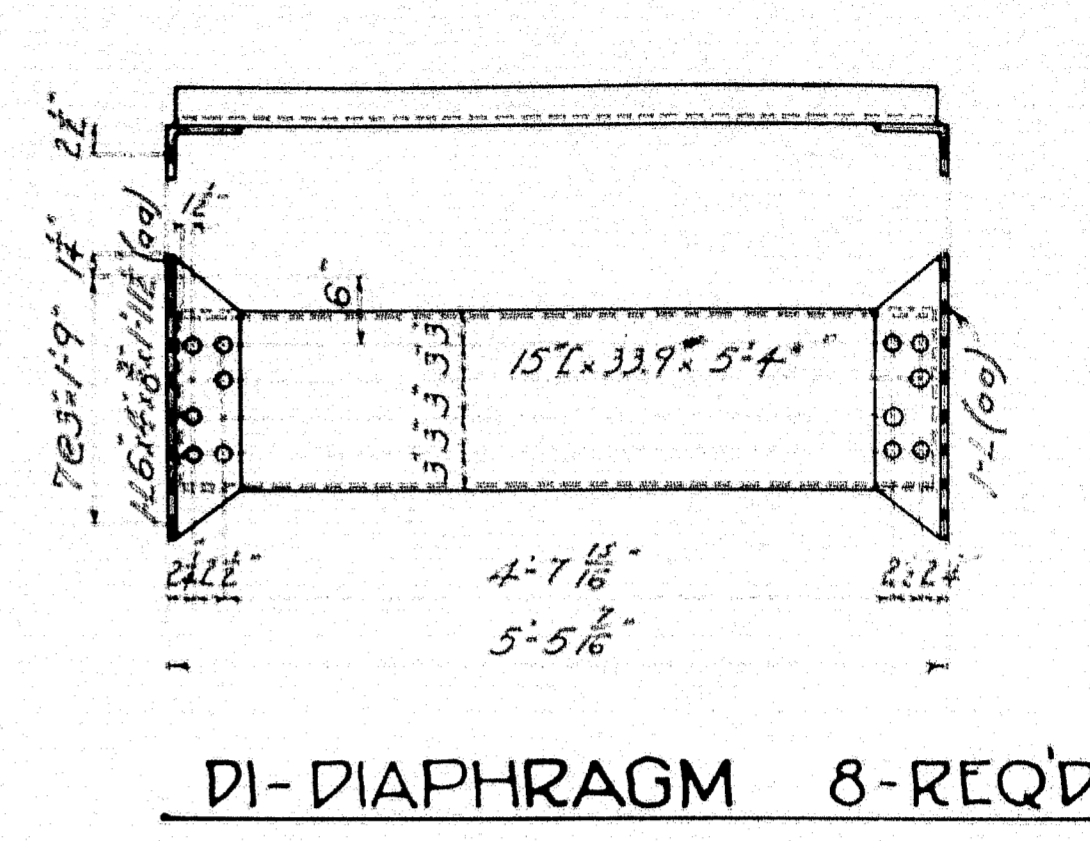
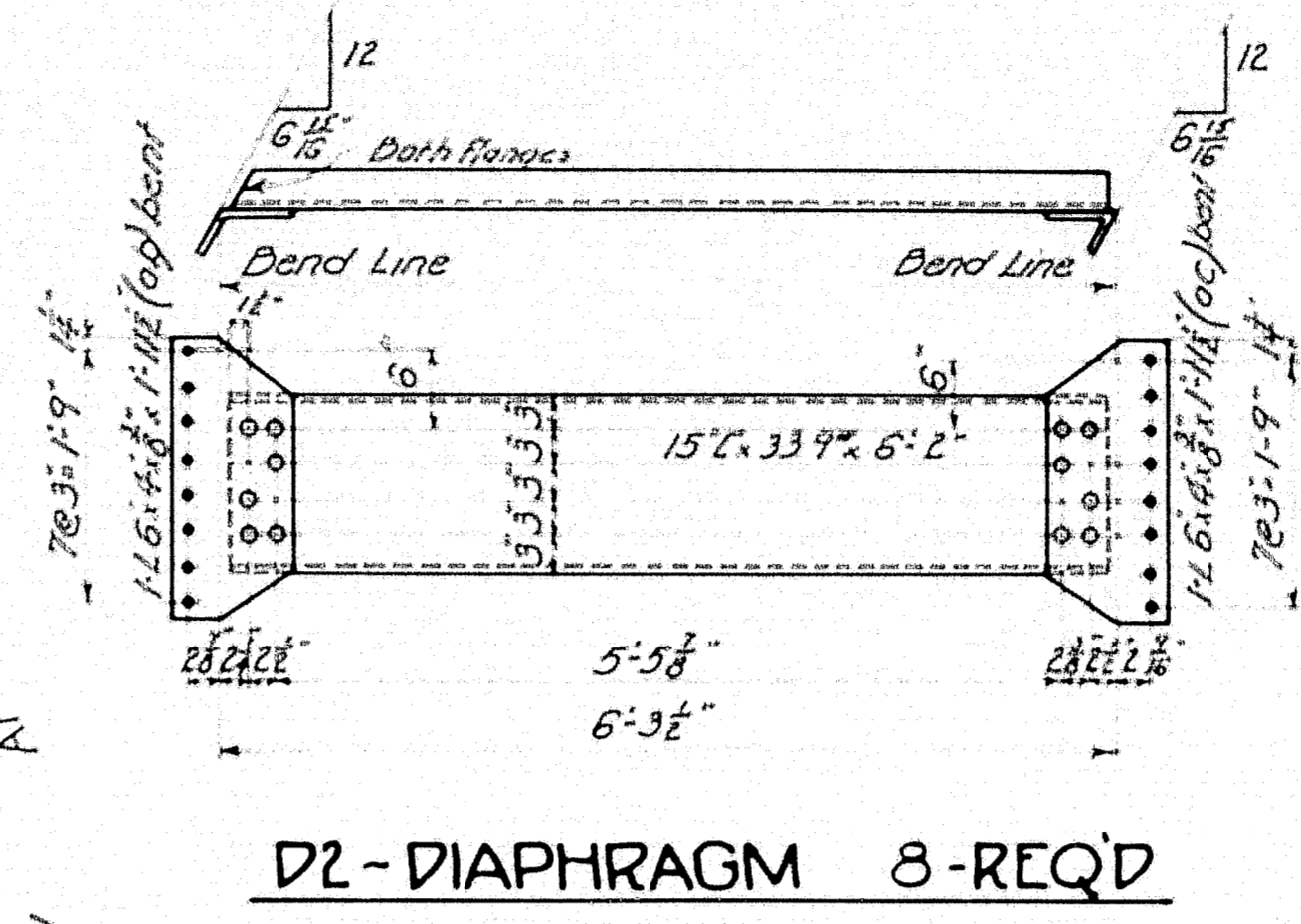
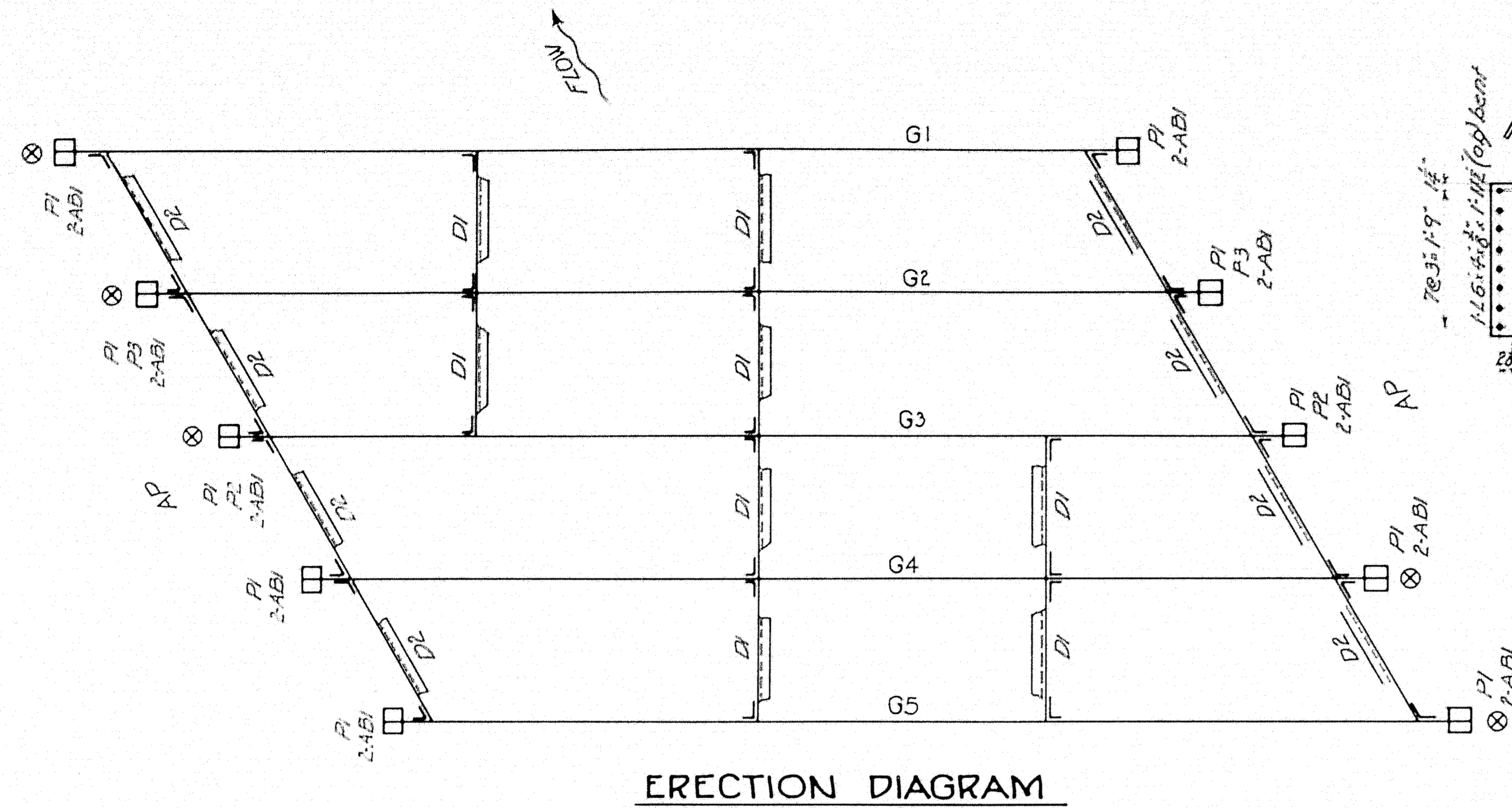
SCALES  
 HORIZ. 1 INCH = 20 FEET  
 VERT. 1 INCH = 5 FEET

STATE HIGHWAY COMMISSION  
 BRIDGE DIVISION  
 CAMBRIDGE BRIDGE  
 OVER  
 SWIFT CAMBRIDGE RIVER  
 IN THE PLANTATION OF  
 GRAFTON  
 OXFORD COUNTY  
 SURVEY PLAN  
 SHEET 1 of 5 AUGUSTA, ME. JUNE 1937

27-90

Surveyed By Blake June 4 1937  
 Plotted & Traced By Beckman





BOLT LIST				
Kind	Size	No	Length	Location
Mach	3/4" φ	90	2 1/4"	Diaphragms
"	3/4" φ	88	2"	"
"	1/4" φ	20	2"	Apron R to top flge

**~NOTES~**

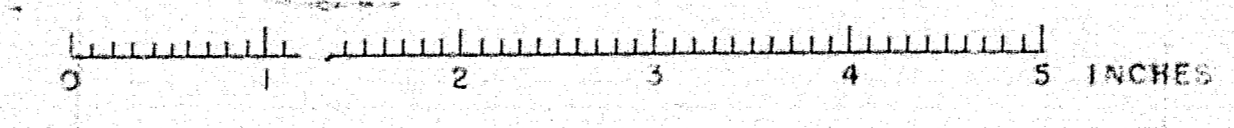
All rivets 3/8" φ unless otherwise noted  
 All holes 3/8" φ unless otherwise noted.  
 Field connections 1/2" φ bolts unless otherwise noted U.S. Sta or Am Br Hex Head + Nuts  
 LOADING - H-15  
 SINGLE LL + Impact  
 F<sub>s</sub> = 18,000 #/in<sup>2</sup>

- G1 - 27" CB x 91" x 42'-8" 1-REQ'D
- G2 - 30" CB x 108" x 42'-8" 1- "
- G3 - 30" CB x 108" x 42'-8" 1- "
- G4 - 30" CB x 108" x 42'-8" 1- "
- G5 - 27" CB x 91" x 42'-8" 1- "

DESIGN - Hamlin  
 TRACED - "  
 CHECKED - C.L.P.

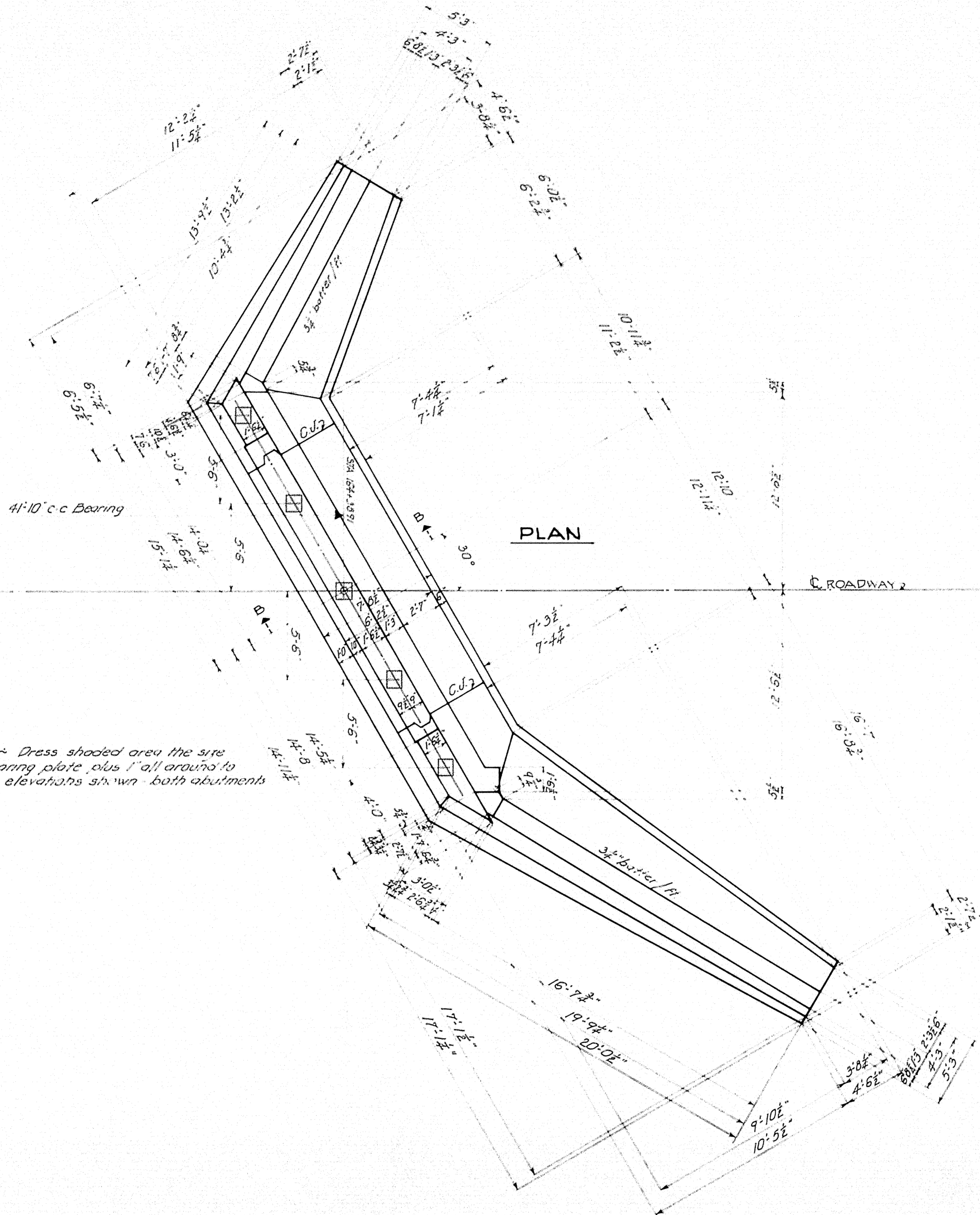
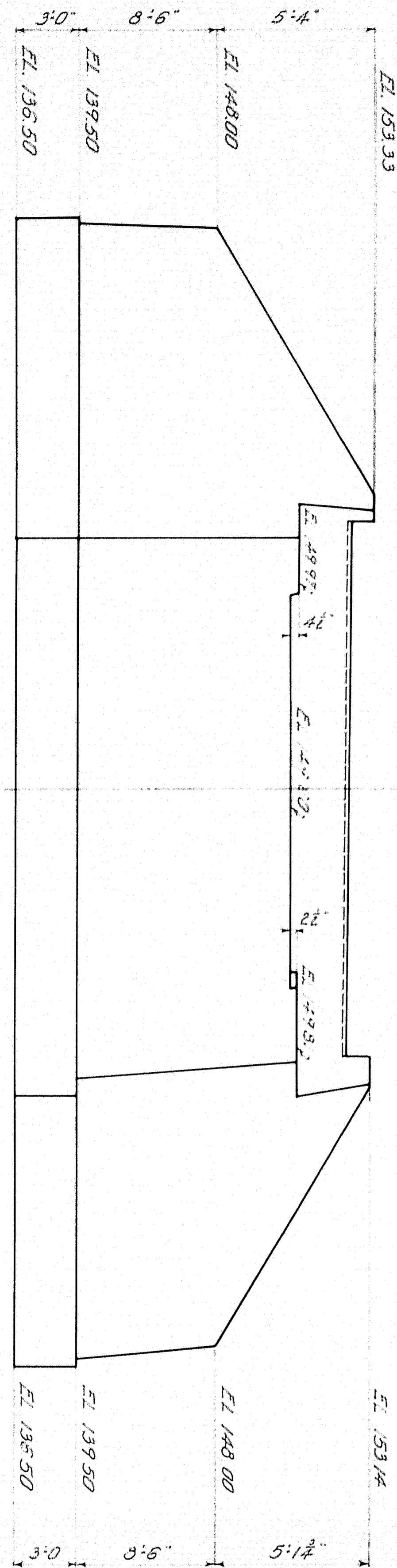
TOWN 04-18  
 BRIDGE 3524

STATE HIGHWAY COMMISSION  
 BRIDGE DIVISION  
**CAMBRIDGE BRIDGE**  
 OVER  
**SWIFT CAMBRIDGE RIVER**  
 IN THE PLANTATION OF  
**GRAFTON - OXFORD CO.**  
 STEEL DETAILS  
 Sheet 2 of 5 Augusta, Maine. June 1937.



**27-91**

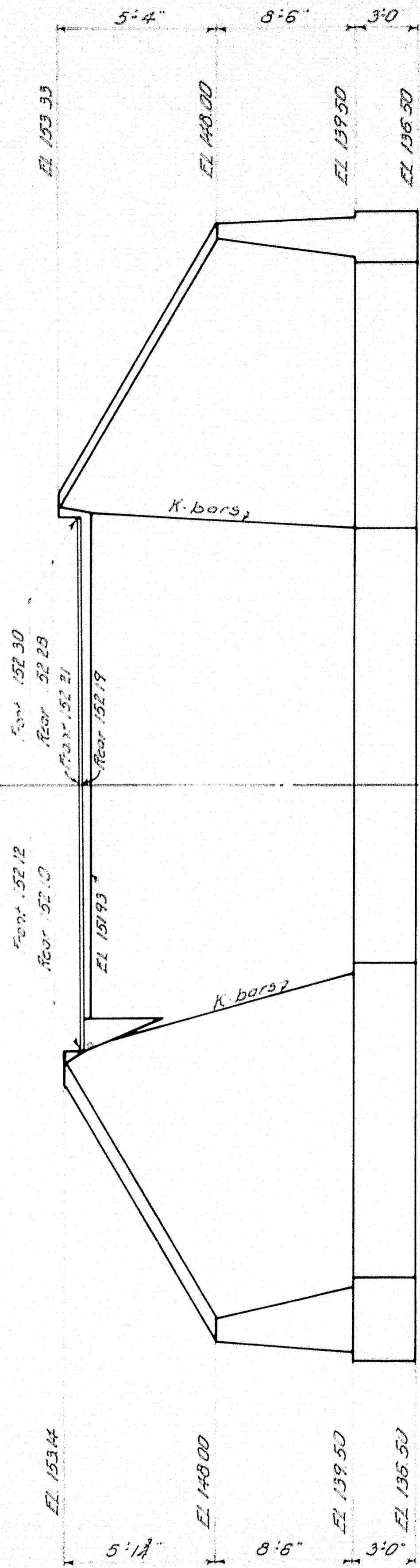
FRONT ELEVATION



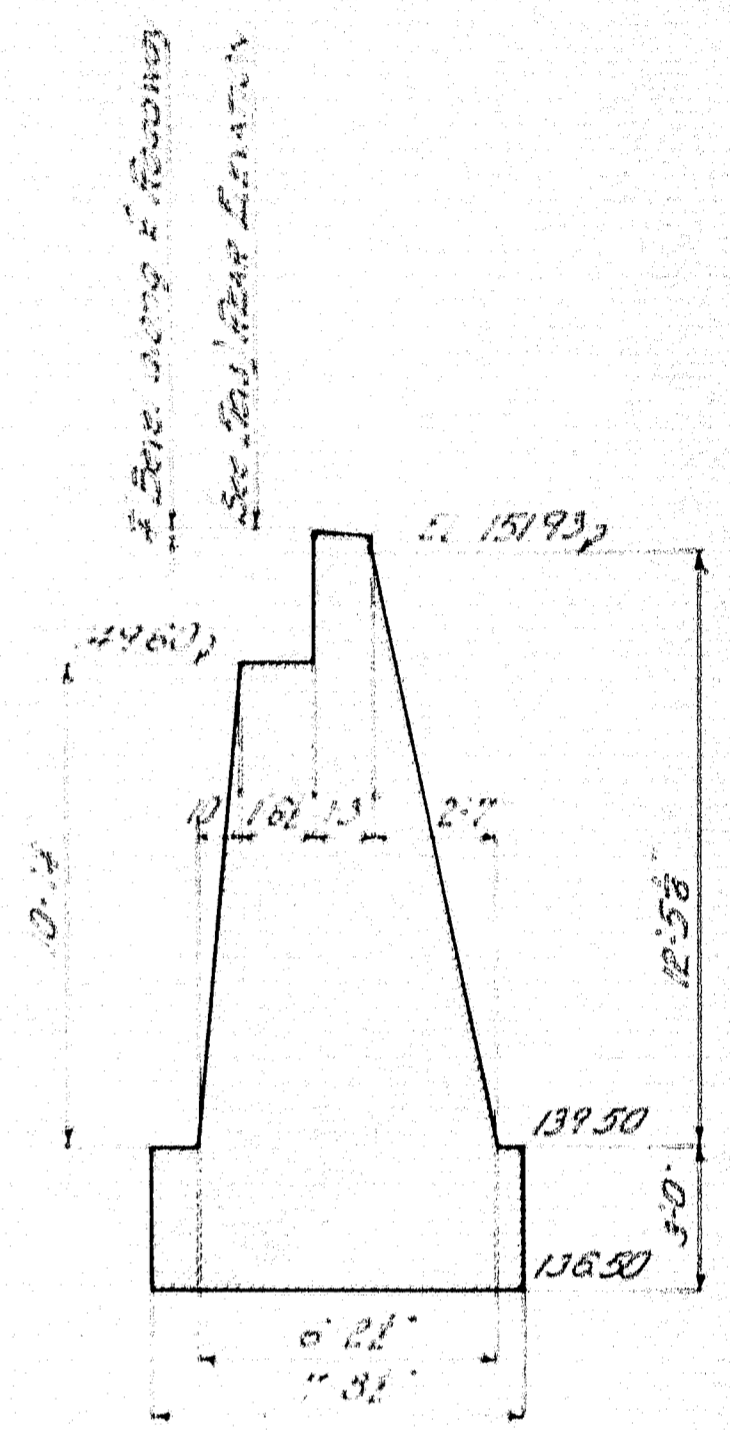
PLAN

NOTE - Dress shaded area the size of bearing plate, plus 1" all around to exact elevations shown both abutments

REAR ELEVATION



SECTION B-B

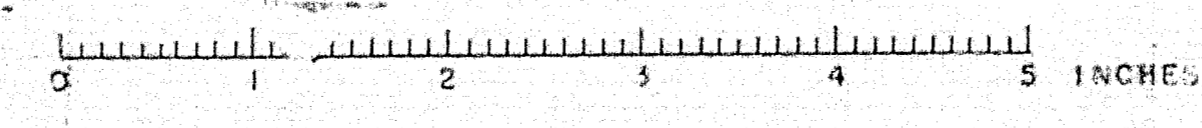


DESIGN - Hamilton  
 DRAWN -  
 CHECKED - C.L.P.

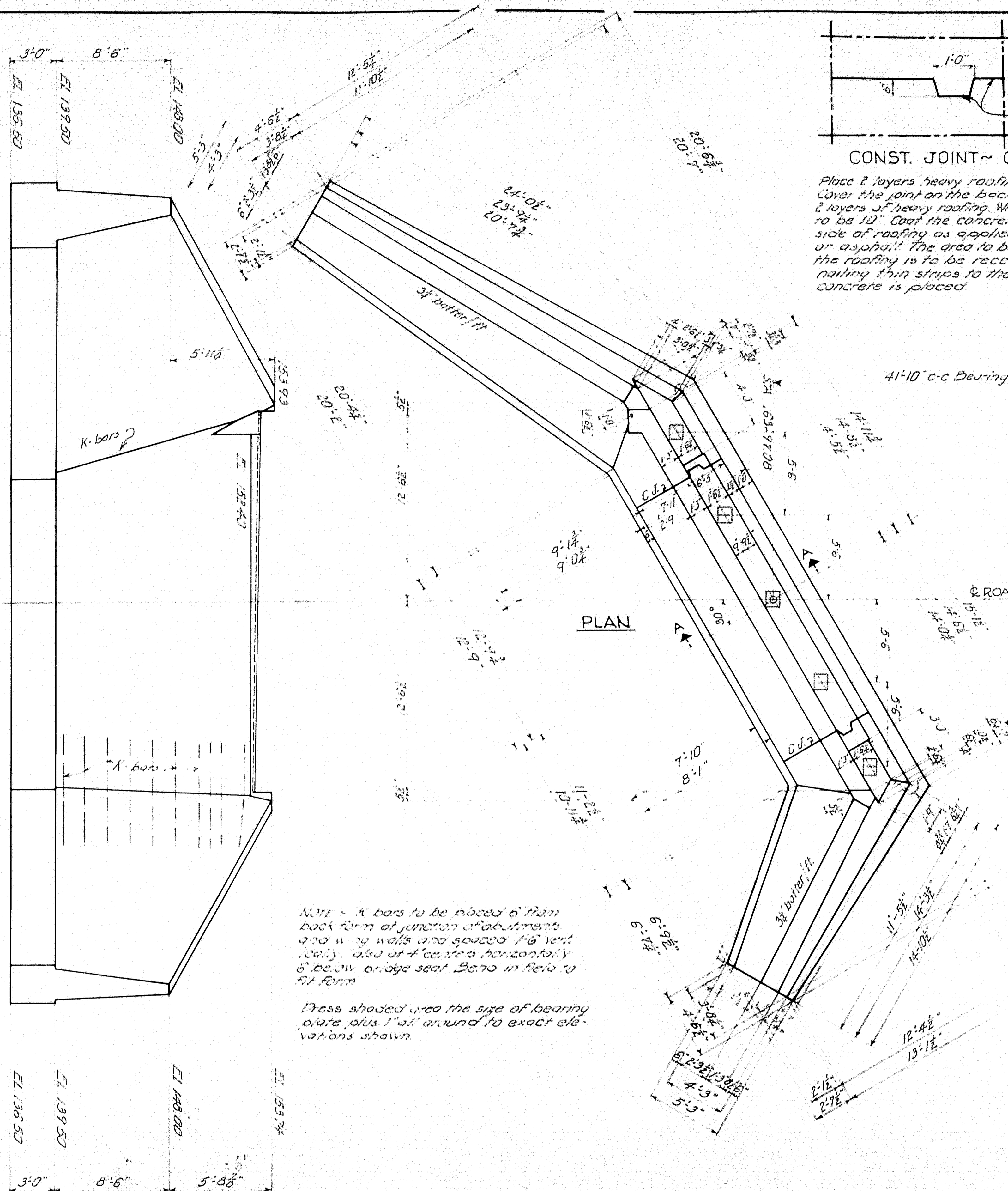
TOWN 09-16  
 BRIDGE 3524

STATE HIGHWAY COMMISSION  
 BRIDGE DIVISION  
**CAMBRIDGE BRIDGE**  
 OVER  
**SWIFT CAMBRIDGE RIVER**  
 IN THE PLANTATION OF  
**GRAFTON - OXFORD CO.**  
 ABUTMENT NO. 2.  
 Sheet 3 of 5 Augusta, Maine June, 1937

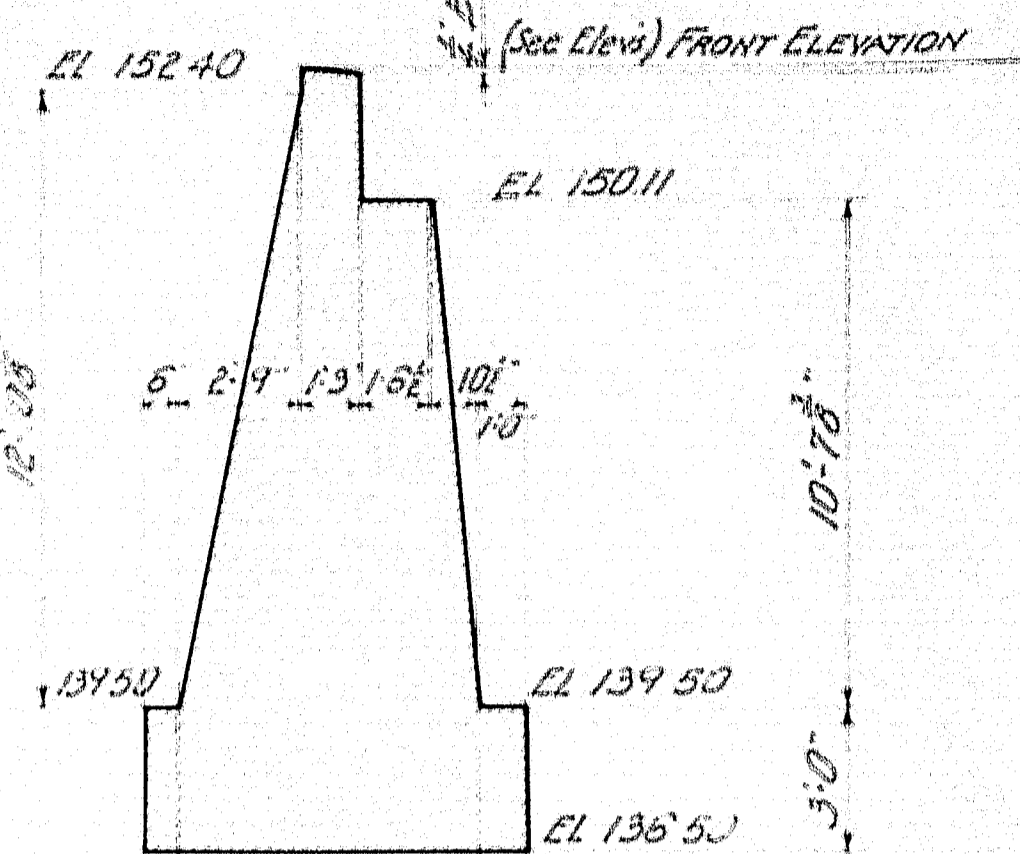
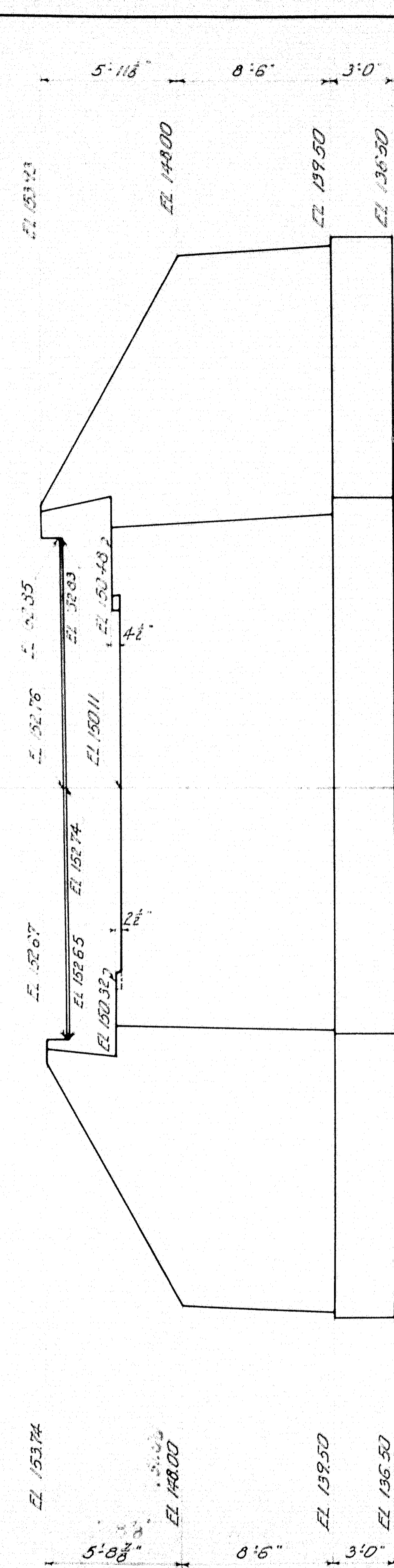
27-92



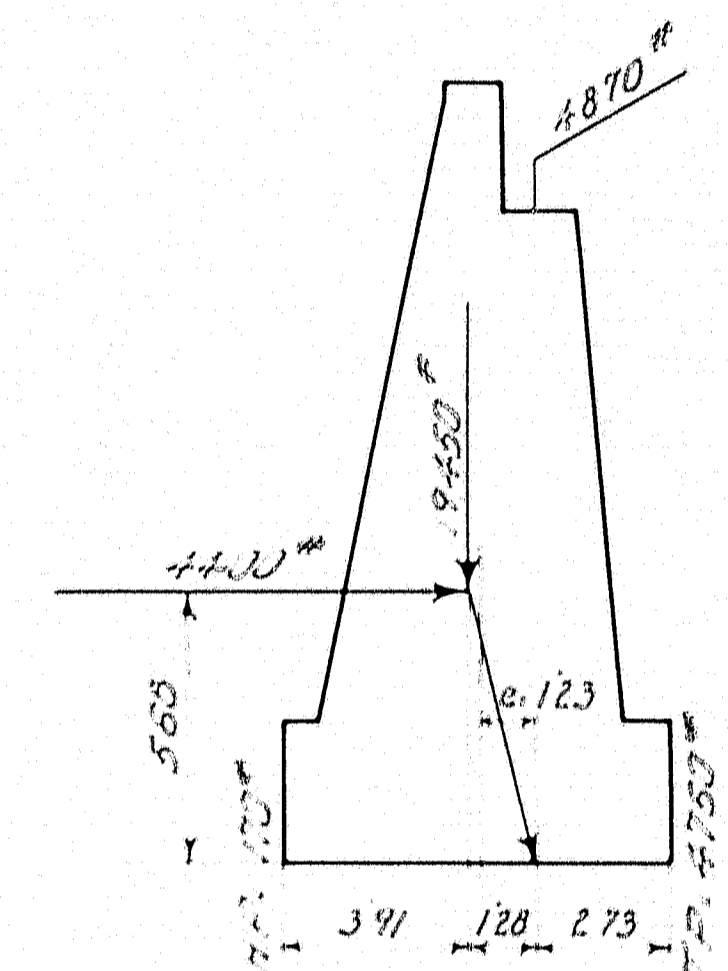
REAR ELEVATION



FRONT ELEVATION



SECTION A-A

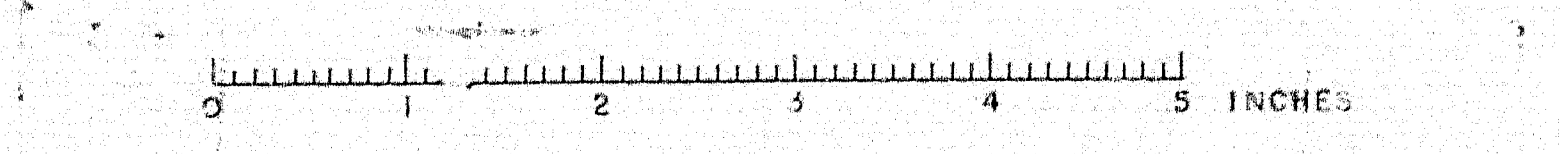


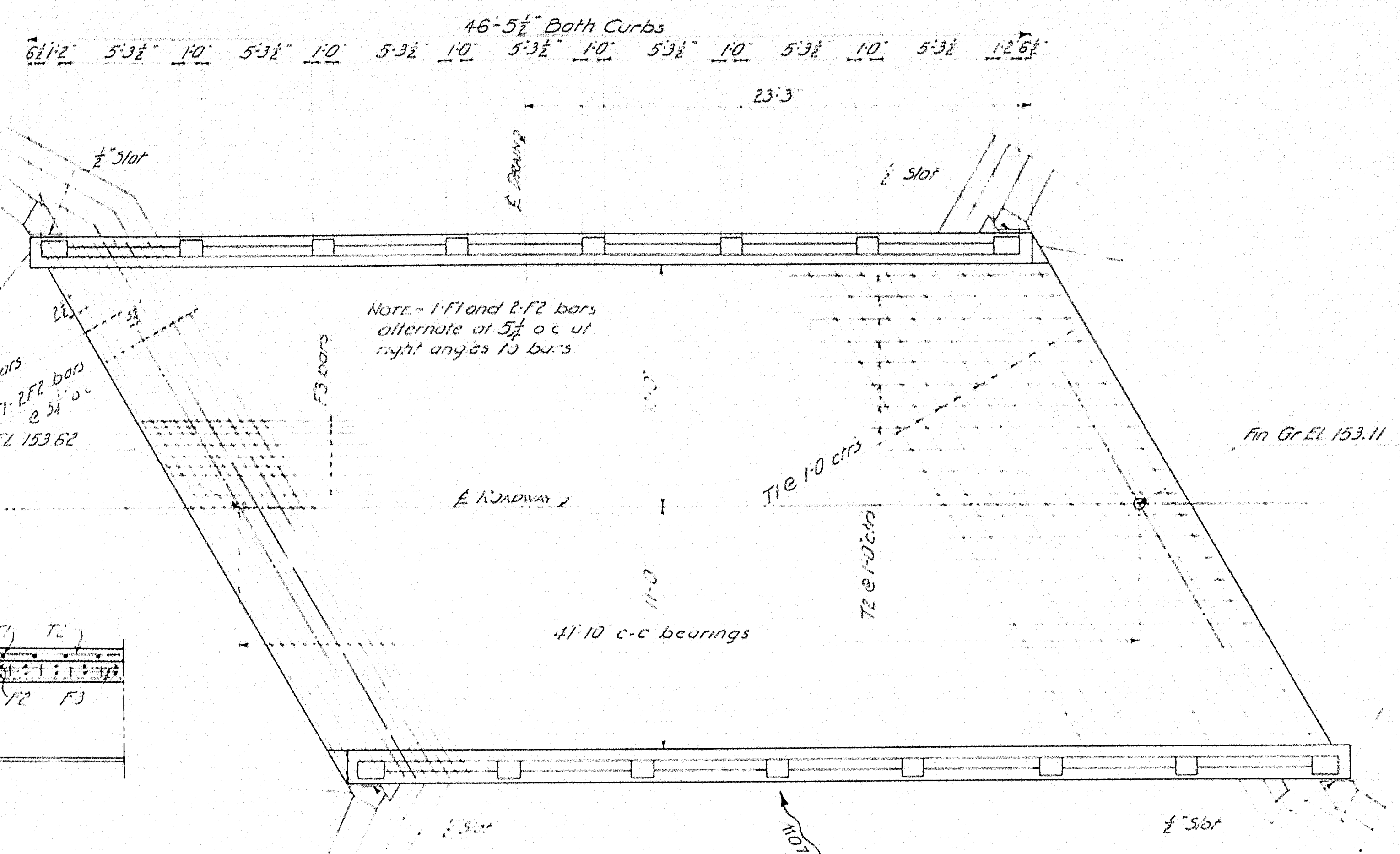
ABUTMENT ANALYSIS

DESIGN - Hamelin  
TRACED - "  
CHECKED - C.L.P.

TOWN	09-16
BRIDGE	3524

STATE HIGHWAY COMMISSION  
BRIDGE DIVISION  
**CAMBRIDGE BRIDGE**  
OVER  
**SWIFT CAMBRIDGE RIVER**  
IN THE PLANTATION OF  
**GRAFTON-OXFORD CO.**  
ABUTMENT NO. 1  
Sheet 4 of 5 Augusta, Maine June, 1937.





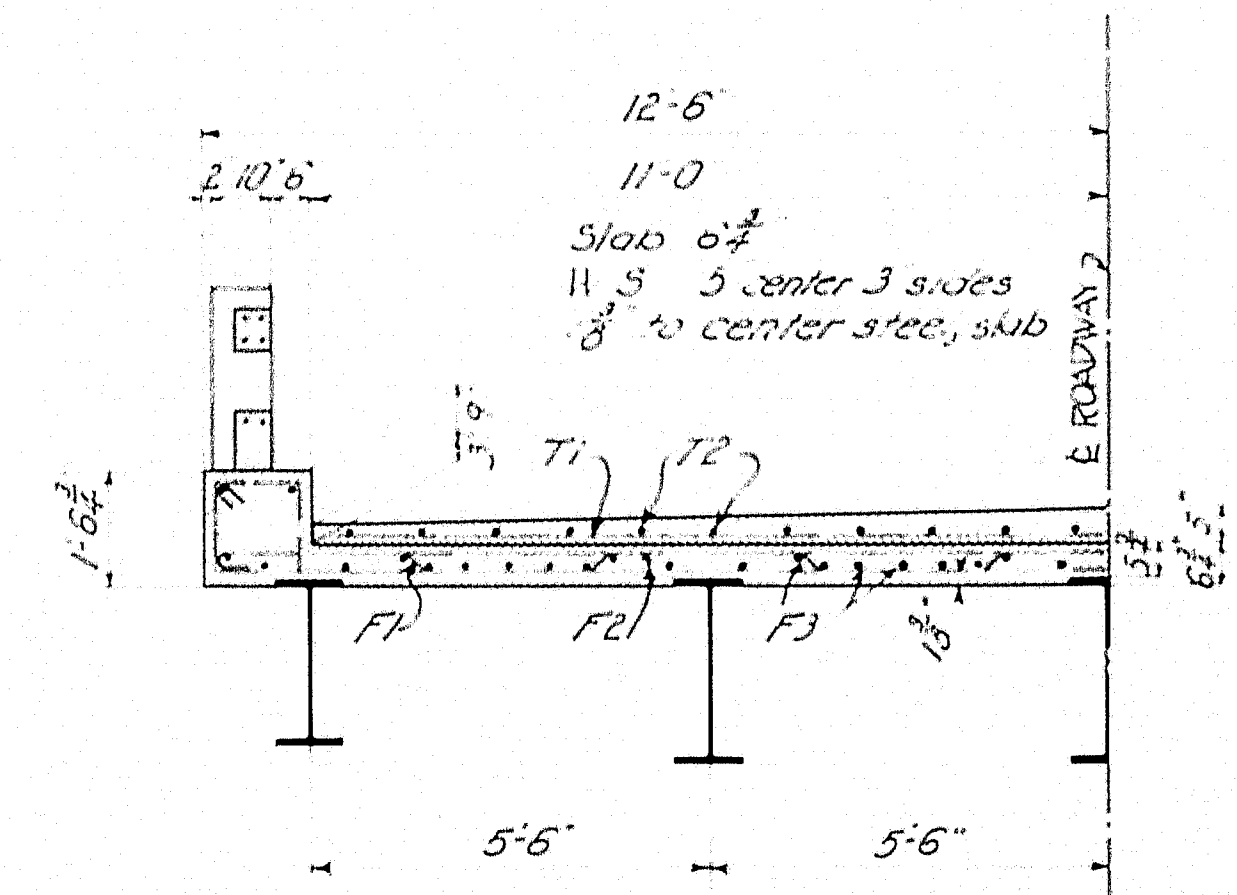
SECTION AT BACKWALL

PLAN

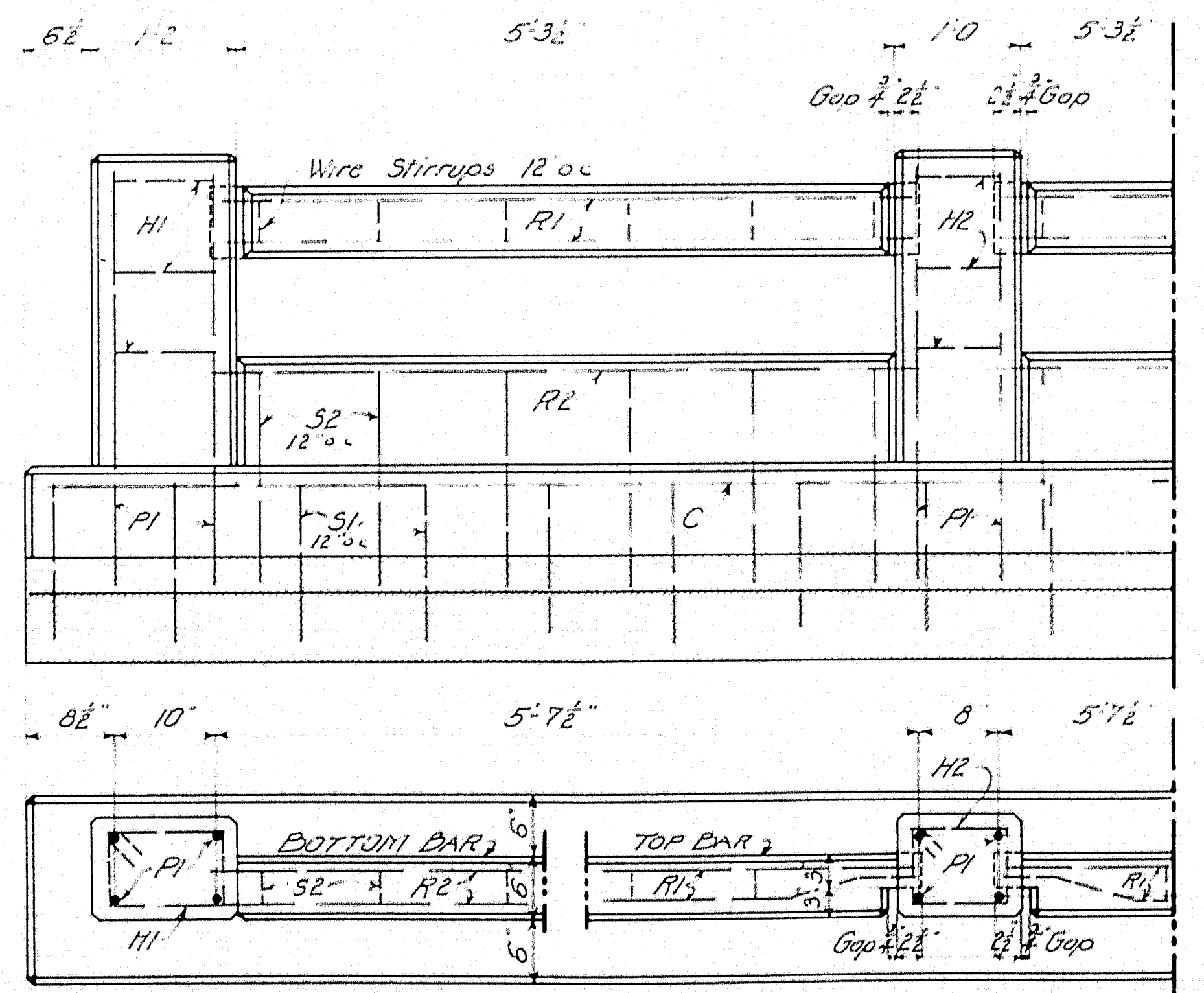
STEEL SCHEDULE									
BENT BARS					STRAIGHT BARS				
Mark	Size	No	Length	Location	Mark	Size	No	Length	Location
F3	3/8"	40	46'-0"	Slab	H1	1/2"	94	5'-3 1/2"	Curbs
F4	3/8"	20	28'-5"	"	H2	1/2"	36	3'-4"	Int. posts
C	1/2"	4	46'-0"	Curb	S1	1/2"	34	5'-3 1/2"	Bottom rail
T1	3/8"	40	25'-0"	Wearing surface	S2	1/2"	36	3'-4"	Int. posts
T2	3/8"	22	46'-0"	"	P1	1/2"	56	5'-7"	Top rail - Bend in field
R1	1/2"	56	5'-7"	Top rail - Bend in field	P2	1/2"	28	5'-9 1/2"	Bot rail
R2	1/2"	28	5'-9 1/2"	Bot rail	K	3/4"	52	3'-0"	Abutments
F1	3/8"	40	46'-0"	Slab					
F2	3/8"	20	28'-5"	Slab					
F3	3/8"	40	46'-0"	Slab					
F4	3/8"	20	28'-5"	Slab					
T1	3/8"	40	25'-0"	Wearing surface					
T2	3/8"	22	46'-0"	"					
R1	1/2"	56	5'-7"	Top rail - Bend in field					
R2	1/2"	28	5'-9 1/2"	Bot rail					
K	3/4"	52	3'-0"	Abutments					

ALL STEEL TO BE PLACED AT FINISHED GRADE  
ALL DIMENSIONS TO CENTER LINE OF BARS

Notes:  
1. Curbs shall be cast with the slab and shall be finished to the same grade as the slab.  
2. The curbs shall be finished to the same grade as the slab.  
3. The curbs shall be finished to the same grade as the slab.  
4. The curbs shall be finished to the same grade as the slab.



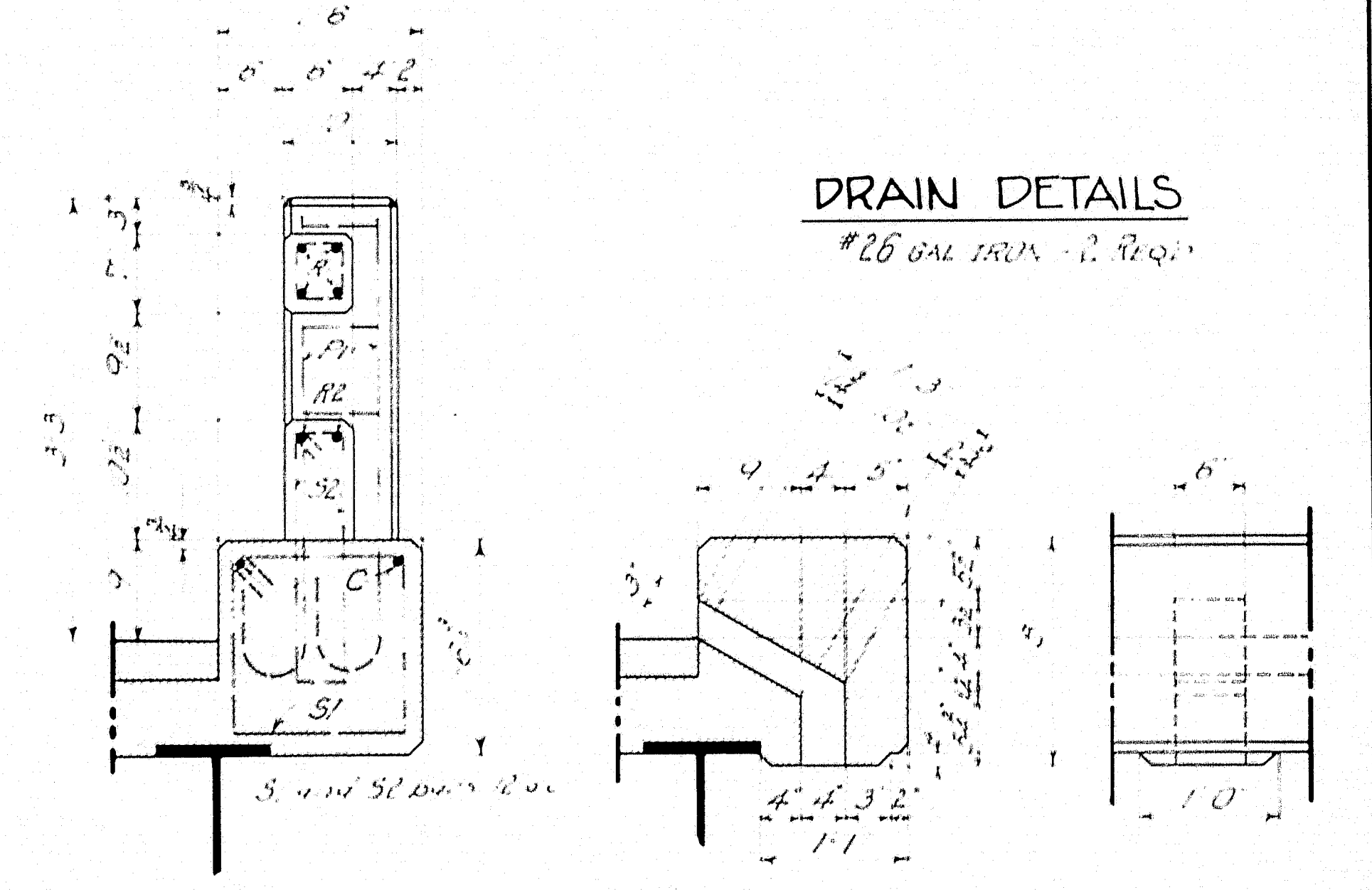
HALF TRANSVERSE SECTION



RAIL DETAILS

Note: Wire stirrups for rail bars shall be constructed in the field from a single strand of #9 uncoated wire. In forming the stirrups, make a complete turn around each reinforcing bar.

Curb to be cast with slab. Steel for posts and lower bar to be placed before curb is placed. The lower bar is to be cast in place. The longitudinal steel in the lower bar to project 3" into post forms. The top bar to be precast and set in position so the ends project into post forms 2 1/2". Wrap the tongue end with two layers of heavy roofing. Build post forms and cast posts. All exposed edges of concrete to be chamfered unless otherwise noted.



DRAIN DETAILS

DESIGN  
H-15 LOADING  
f<sub>s</sub> = 16000 lb./sq. in.  
f<sub>c</sub> = 900 lb./sq. in.  
n = 10

Drawn - Vaniller  
Checked - " " " " " " " "  
JUN 16 09-16  
BRIDGE 3524

STATE HIGHWAY COMMISSION  
BRIDGE DIVISION  
CAMBRIDGE BRIDGE  
OVER  
SWIFT CAMBRIDGE RIVER  
IN THE PLANTATION OF  
GRAFTON-OXFORD CO.  
SUPERSTRUCTURE  
Sheet 5 of 5 Augusta, Maine June 1937.

