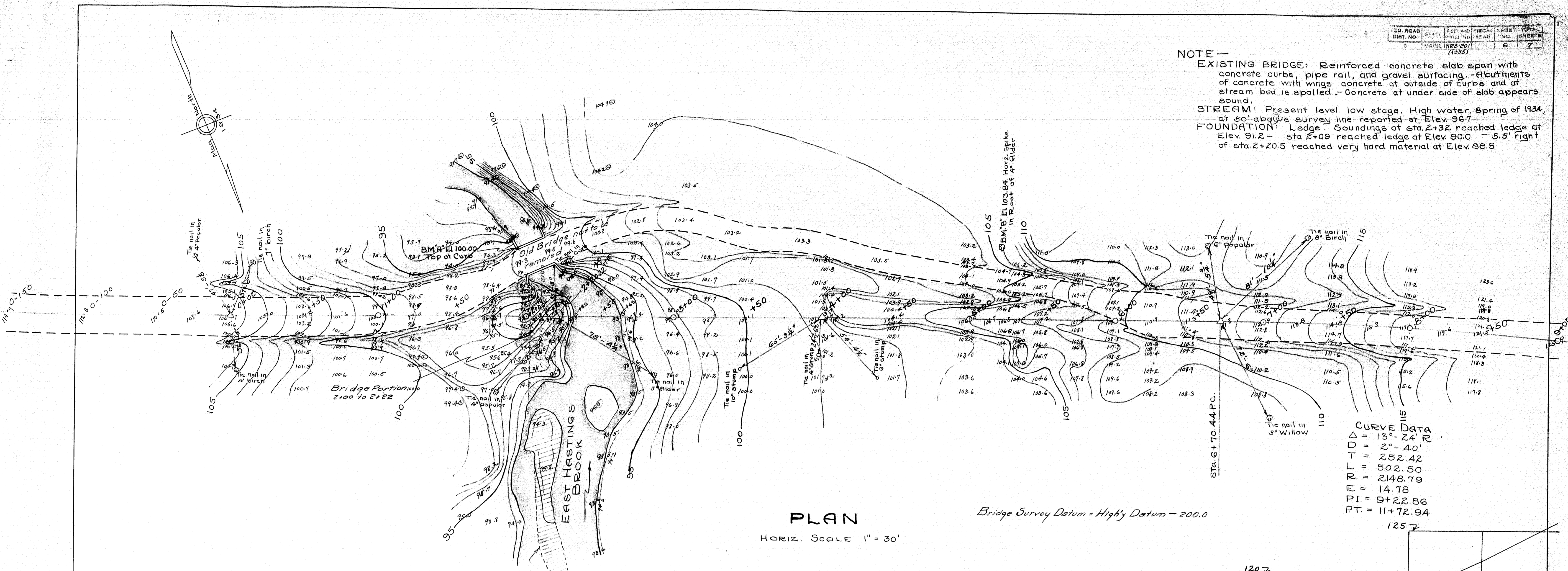


ED. ROAD DIST. NO.	STATE	FED. AID	FISCAL YEAR	SHEET NO.	TOTAL SHEETS
6	MAINE	NR3261	(1935)	6	7

NOTE -  
 EXISTING BRIDGE: Reinforced concrete slab span with concrete curbs, pipe rail, and gravel surfacing. -Abutments of concrete with wings concrete at outside of curbs and at stream bed is spalled. -Concrete at under side of slab appears sound.  
 STREAM: Present level low stage. High water, Spring of 1934, at 50' above survey line reported at Elev. 96.7  
 FOUNDATION: Ledge. Soundings at sta. 2+32 reached ledge at Elev. 91.2 - sta 2+09 reached ledge at Elev. 90.0 - 5.5' right of sta. 2+20.5 reached very hard material at Elev. 88.5

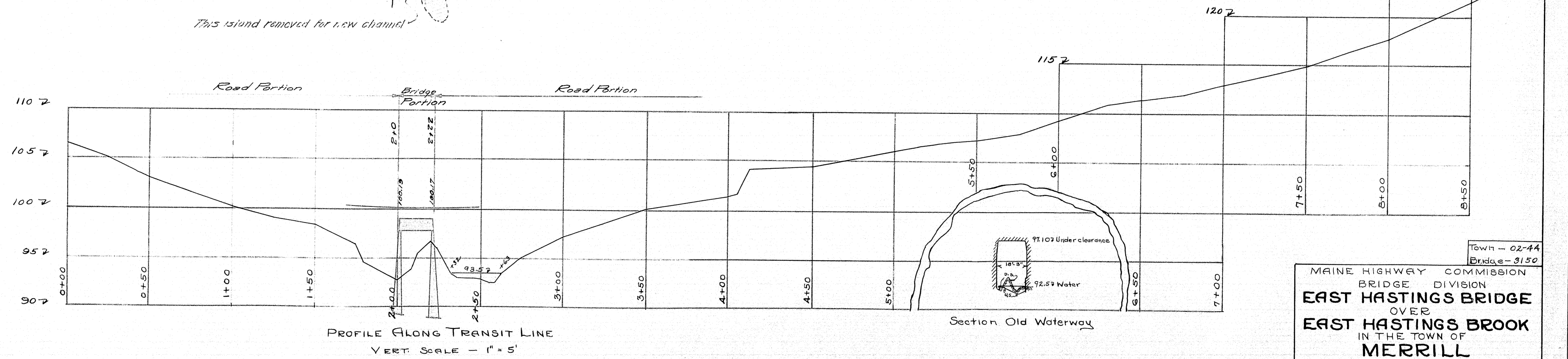


**PLAN**

HORIZ. SCALE 1" = 30'

Bridge Survey Datum = Highy Datum - 200.0

CURVE DATA  
 $\Delta = 13^\circ - 24' R$   
 $D = 2^\circ - 40'$   
 $T = 252.42$   
 $L = 502.50$   
 $R = 2148.79$   
 $E = 14.78$   
 $PI. = 9+22.86$   
 $PT. = 11+72.94$



PROFILE ALONG TRANSIT LINE  
 VERT. SCALE - 1" = 5'

Town - 02-44  
 Bridge - 3150  
 MAINE HIGHWAY COMMISSION  
 BRIDGE DIVISION  
**EAST HASTINGS BRIDGE**  
 OVER  
**EAST HASTINGS BROOK**  
 IN THE TOWN OF  
**MERRILL**  
**AROOSTOOK COUNTY**  
 SURVEY PLAN  
 Sheet 7 of 8 Augusta, Me. Sept. 4, 1934

Surveyed by W. B. Weston  
 Plotted by J. C. East

