

GENERAL NOTES

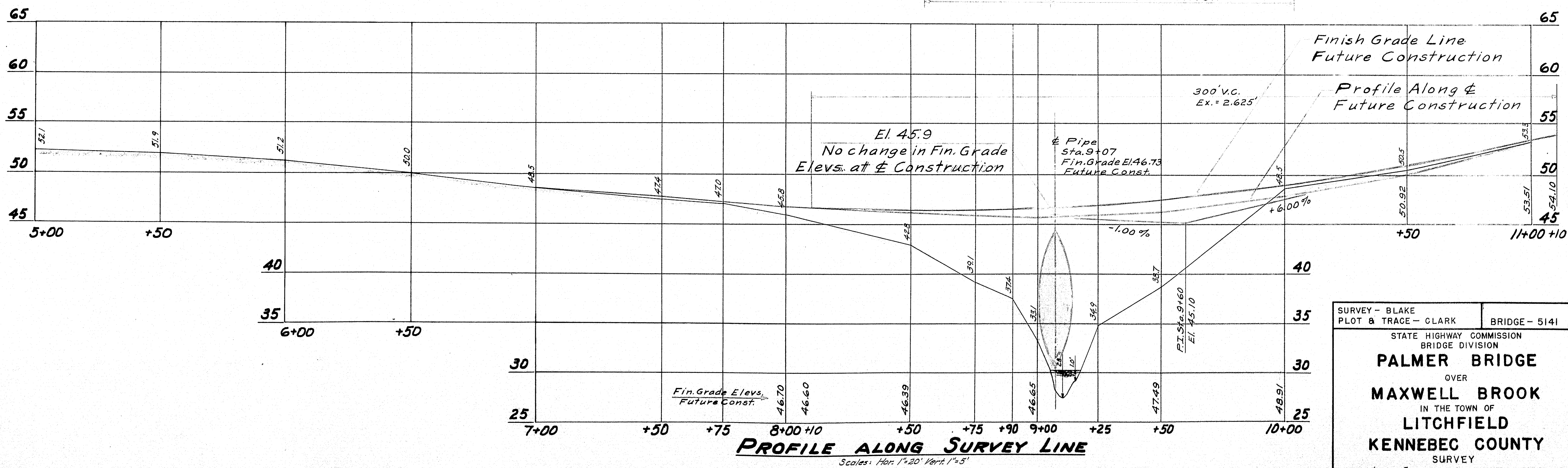
- Superstructure - 4" transverse plank on 8-12" round log Stringers. Fair condition
- Substructure - Abutments of large, roughly laid, dry field stone. U.S. corner about 1/4", and D.S. corner about 1/2" protected with stone fill. Fair condition. Abutments built on ledge.
- Stream - Swift at all stages. Stream bed is ledge D.S. of present bridge site. Extreme high water Elev. 41.0.
- Approaches - Surface treated gravel. Good condition.

Curve Data
 P.I. Sta. 6+72.00±
 I = 6° 06' 56" R
 D = 3° 00'
 T = 102.04'
 L = 203.85'
 R = 1910.08'
 Ex. = 2.72'

PLAN

Scales: Hor. 1" = 20' Vert. 1" = 5'

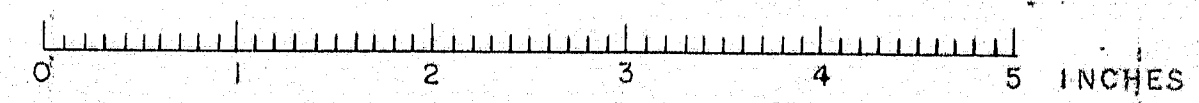
Note - See Sheet #3 for Rip-rap details

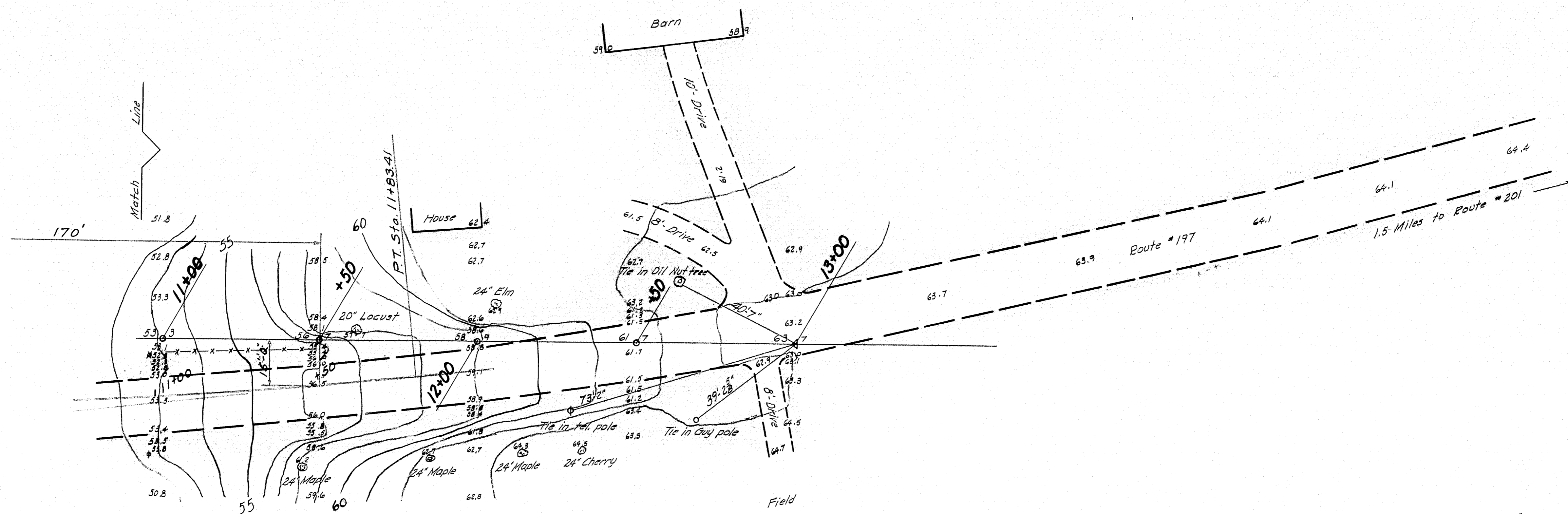


PROFILE ALONG SURVEY LINE

Scales: Hor. 1" = 20' Vert. 1" = 5'

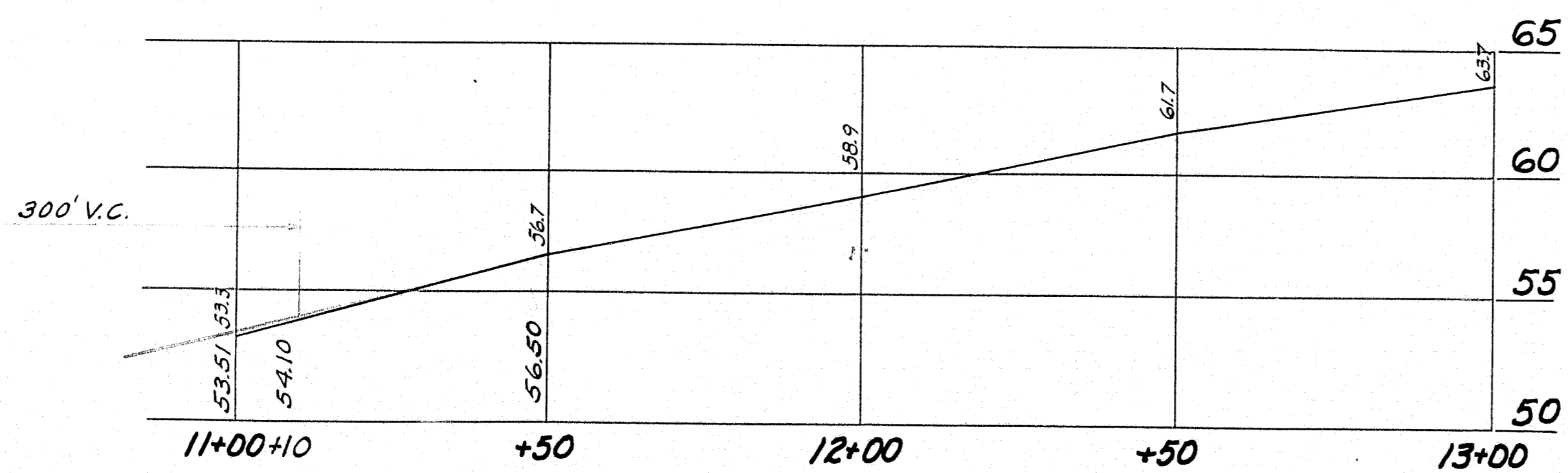
SURVEY - BLAKE	BRIDGE - 5141
PLOT & TRACE - CLARK	
STATE HIGHWAY COMMISSION BRIDGE DIVISION	
PALMER BRIDGE	
OVER	
MAXWELL BROOK	
IN THE TOWN OF	
LITCHFIELD	
KENNEBEC COUNTY	
SURVEY	
SHEET 1 OF 3 AUGUSTA, MAINE JUNE 1947	





PLAN

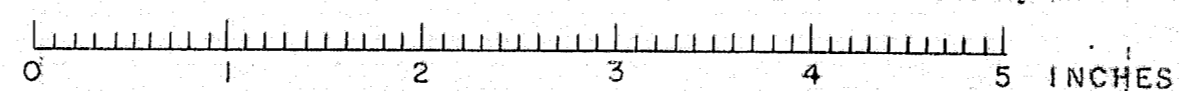
Scales: Hor. 1"=20' Vert. 1"=5'

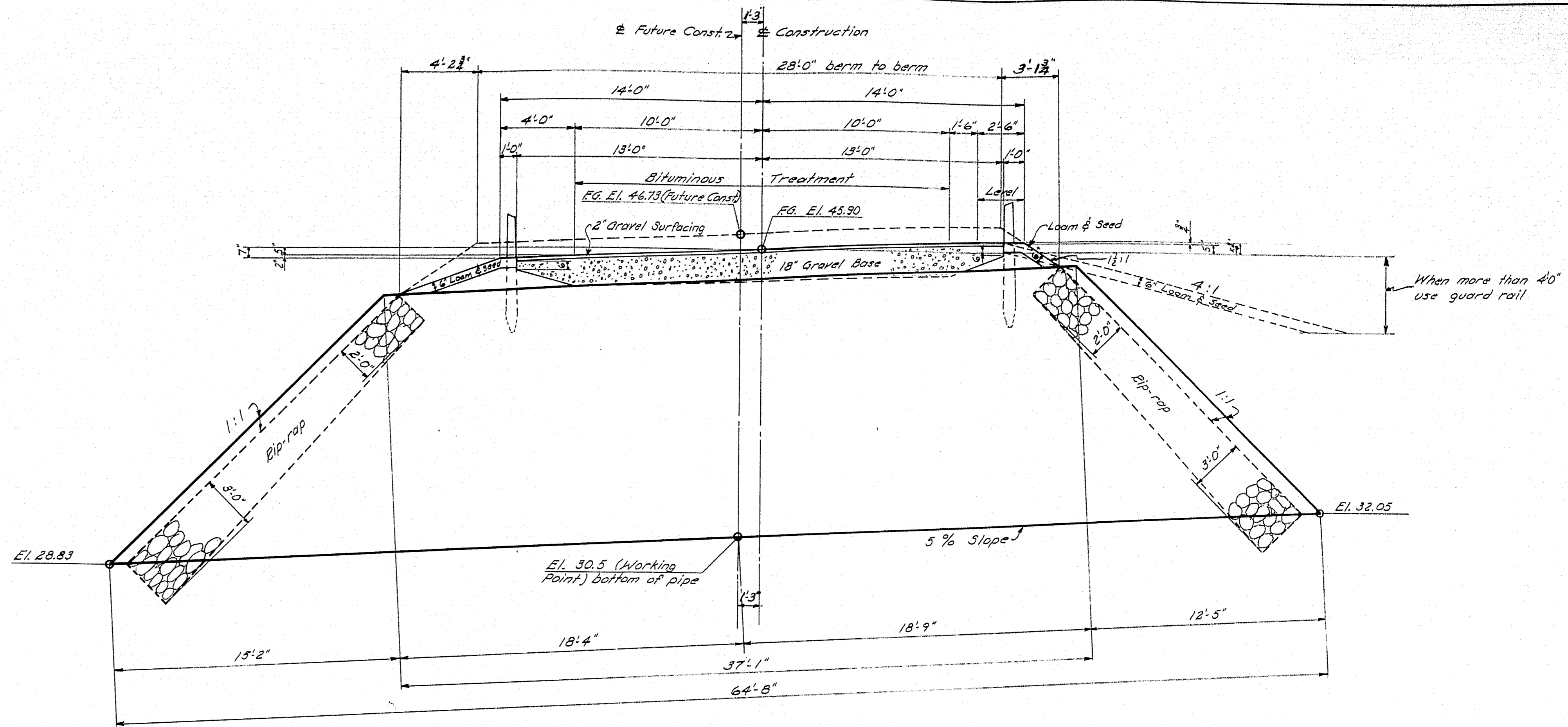
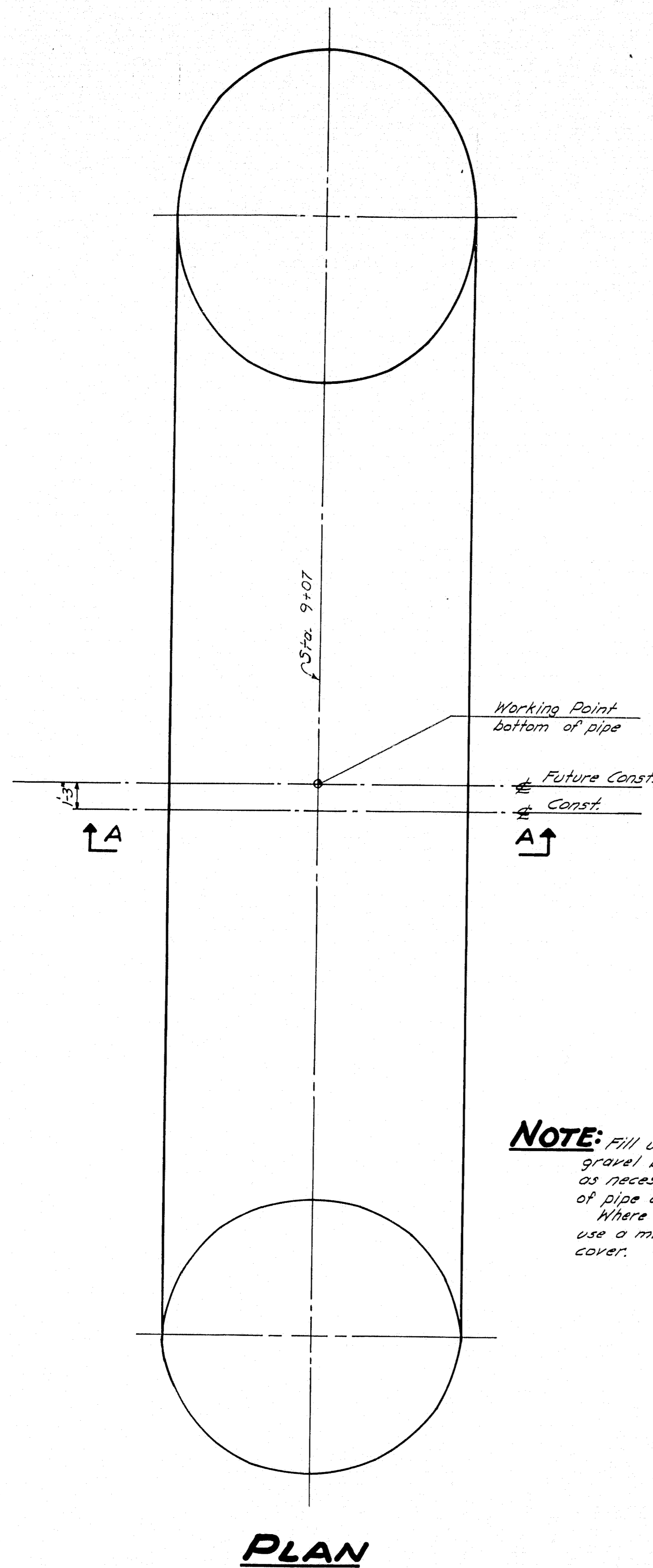


PROFILE ALONG SURVEY LINE

Scales: Hor. 1"=20' Vert. 1"=5'

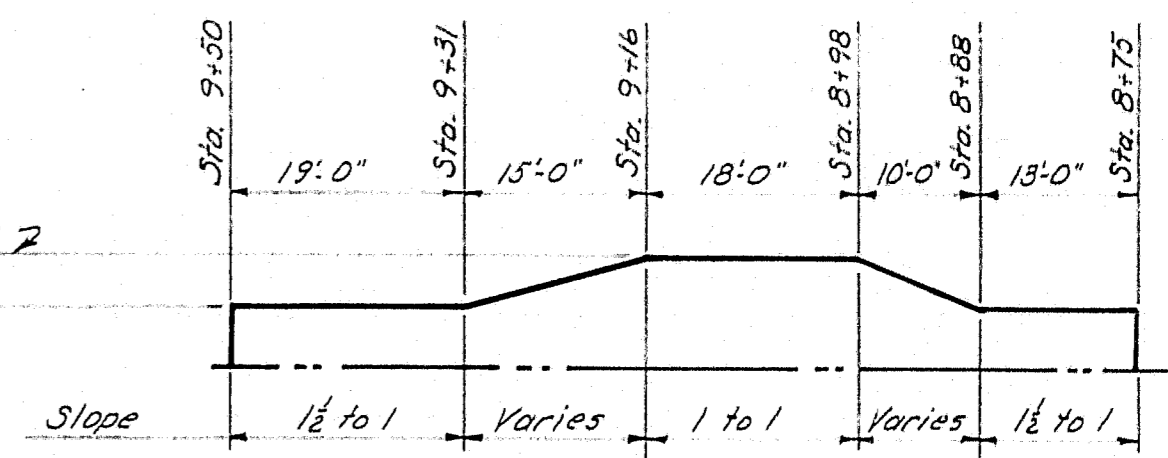
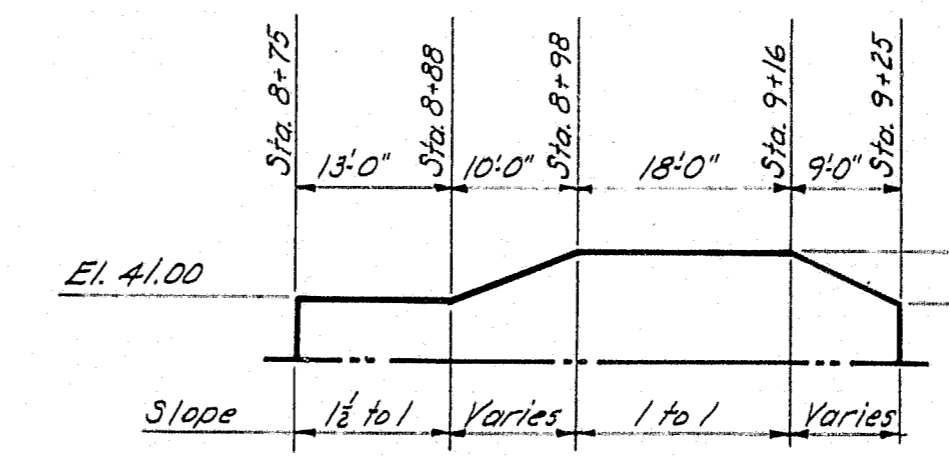
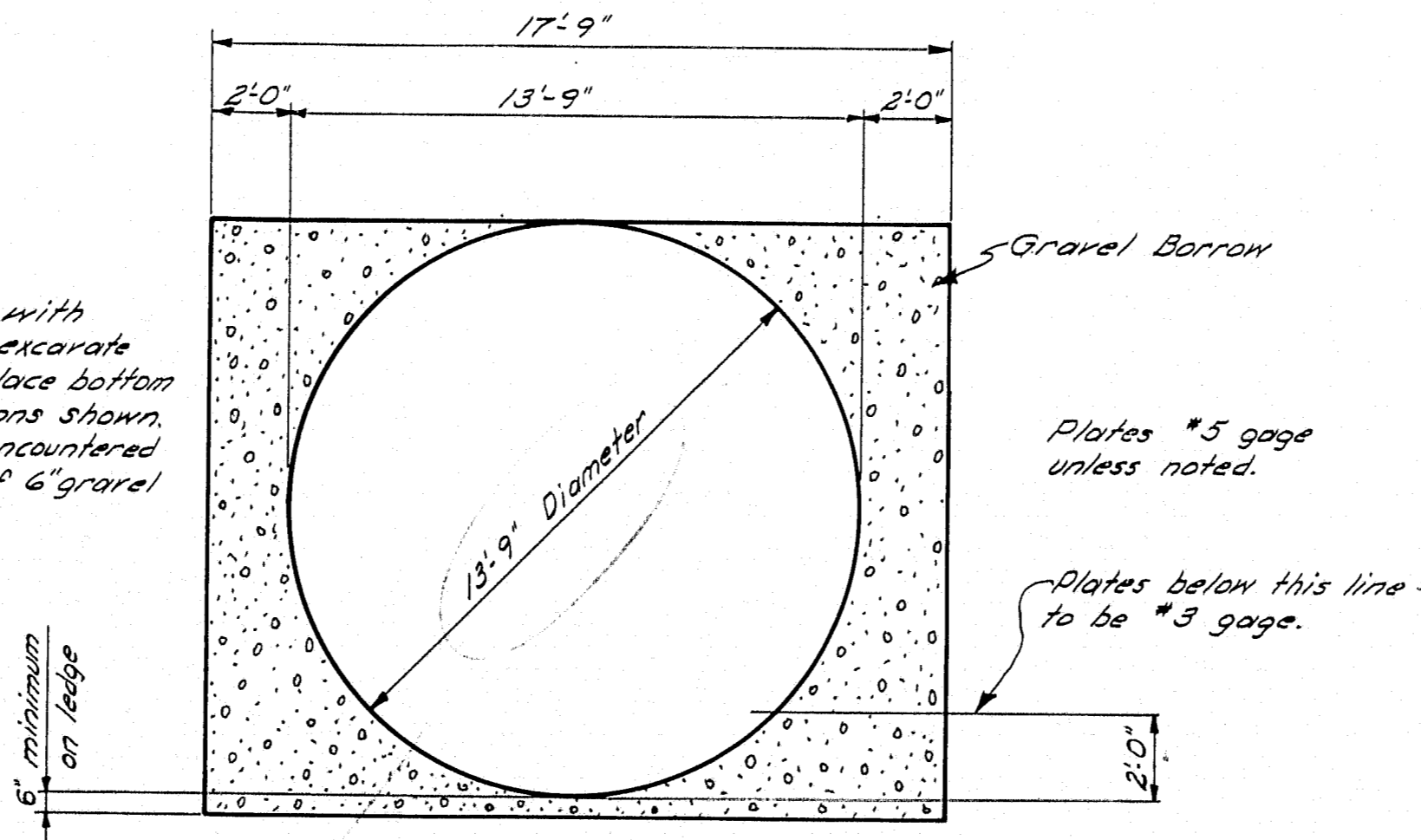
SURVEY - BLAKE	BRIDGE - 5141
PLOT & TRACE - CLARK	
STATE HIGHWAY COMMISSION BRIDGE DIVISION	
PALMER BRIDGE	
OVER	
MAXWELL BROOK	
IN THE TOWN OF	
LITCHFIELD	
KENNEBEC COUNTY	
SURVEY	
SHEET 2 OF 3 AUGUSTA, MAINE JUNE 1947	





**TRANSVERSE SECTION
&
TYPICAL APPROACH SECTION**

NOTE: Fill under pipe with gravel borrow, or excavate as necessary to place bottom of pipe at elevations shown. Where ledge is encountered use a minimum of 6" gravel cover.



MATERIAL REQ'D.

One (1) 165" Diameter Sectional Plate Pipe, of #3 @ #5 gage to dimensions shown, galvanized with bolts. The gages shown assume corrugations of 1 1/2 inches, at a pitch of 6 inches. If a greater depth of corrugation is used, such change shall not reduce the amount of metal. There shall be a minimum of four (4) bolts per foot of longitudinal seam.
Specifications - A.A.S.H.O. Standard Specifications for Steel Highway Bridges.

14'-0" dia. provided (see letter file)

DESIGN - WHITE	BRIDGE - 5141
TRACE - CLARK	
CHECK - <i>Ed</i>	
STATE HIGHWAY COMMISSION BRIDGE DIVISION	
PALMER BRIDGE	
OVER	
MAXWELL BROOK	
IN THE TOWN OF	
LITCHFIELD	
KENNEBEC COUNTY	
SECTIONAL PLATE PIPE DETAILS	
SHEET 3 OF 3 AUGUSTA, MAINE JULY 1947	

