

NOTES

Existing Superstructure:

Covered wooden pony truss with floor beams at about 3' centers in fair but weak condition. 3" transverse plank and 2" longitudinal plank in poor condition. Downstream lower chord anchored to face abutments.

Existing Substructure:

Abutments of split granite roughly laid dry in courses in poor condition.

Stream:

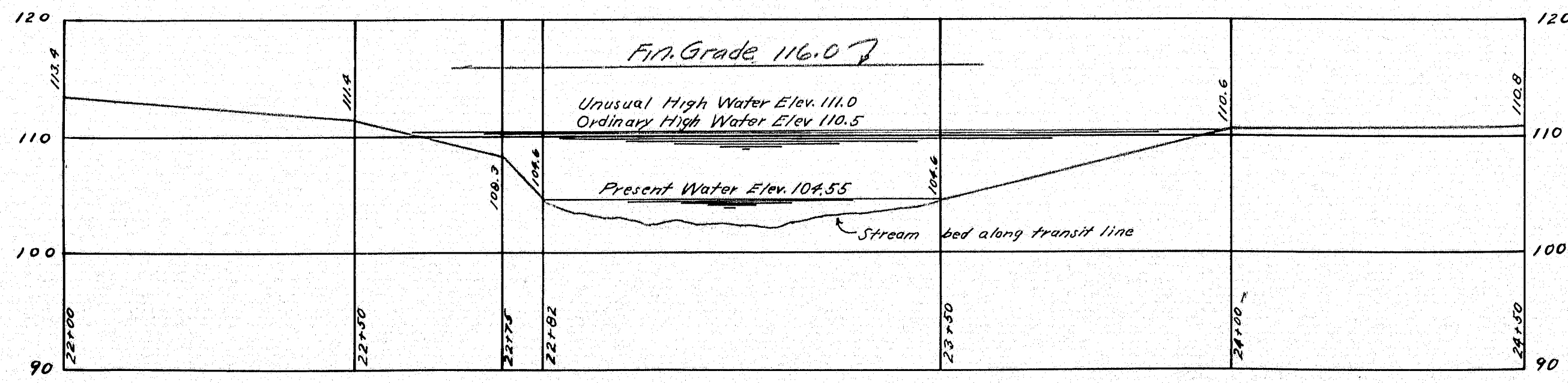
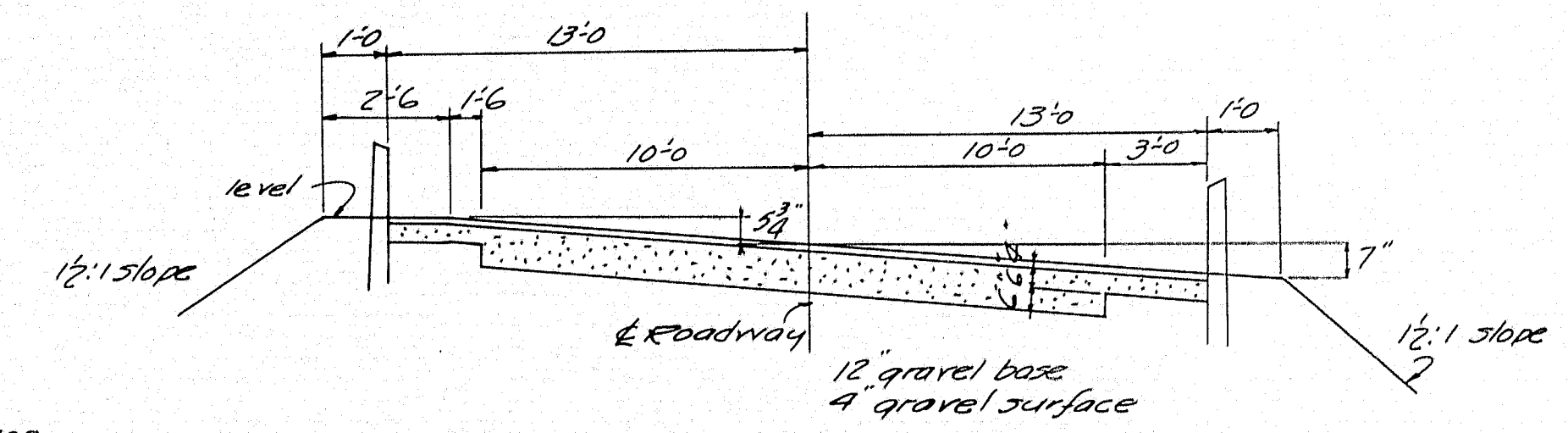
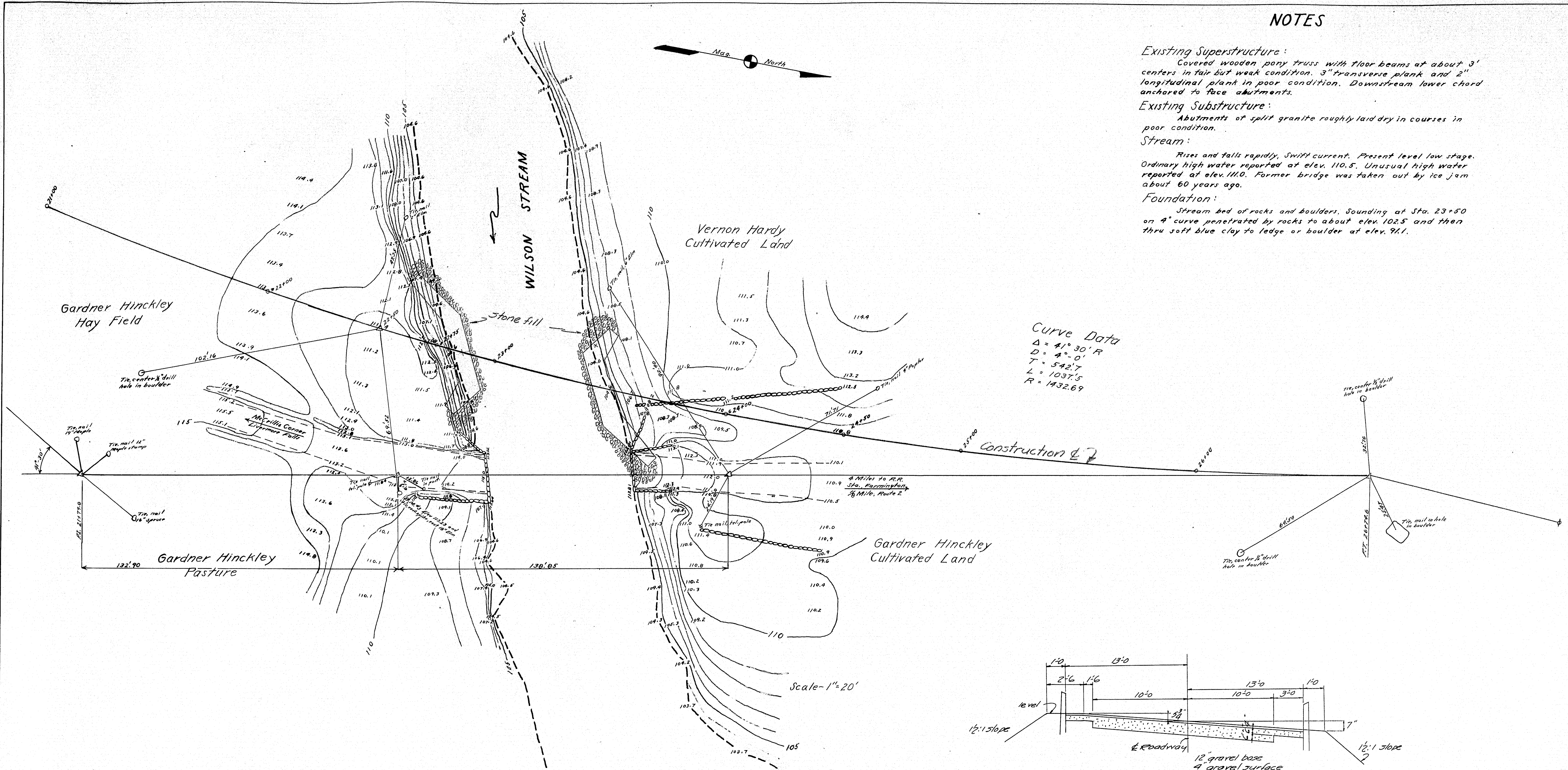
Rises and falls rapidly. Swift current. Present level low stage. Ordinary high water reported at elev. 110.5. Unusual high water reported at elev. 111.0. Former bridge was taken out by ice jam about 60 years ago.

Foundation:

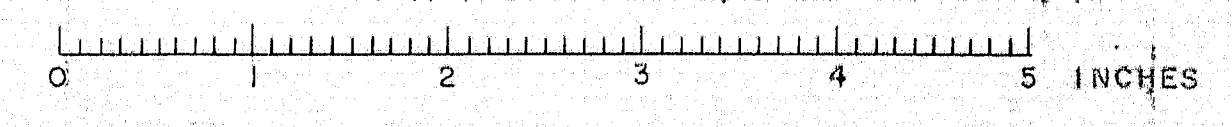
Stream bed of rocks and boulders. Sounding at Sta. 23+50 on 9' curve penetrated by rocks to about elev. 102.5 and then thru soft blue clay to ledge or boulder at elev. 91.

Curve Data

$\Delta = 41^{\circ} 30' R$
 $D = 9^{\circ} - 0'$
 $T = 542.7$
 $L = 1037.5$
 $R = 1432.69$



Scales
 Hor. - 1" = 20'
 Vert. - 1" = 10'

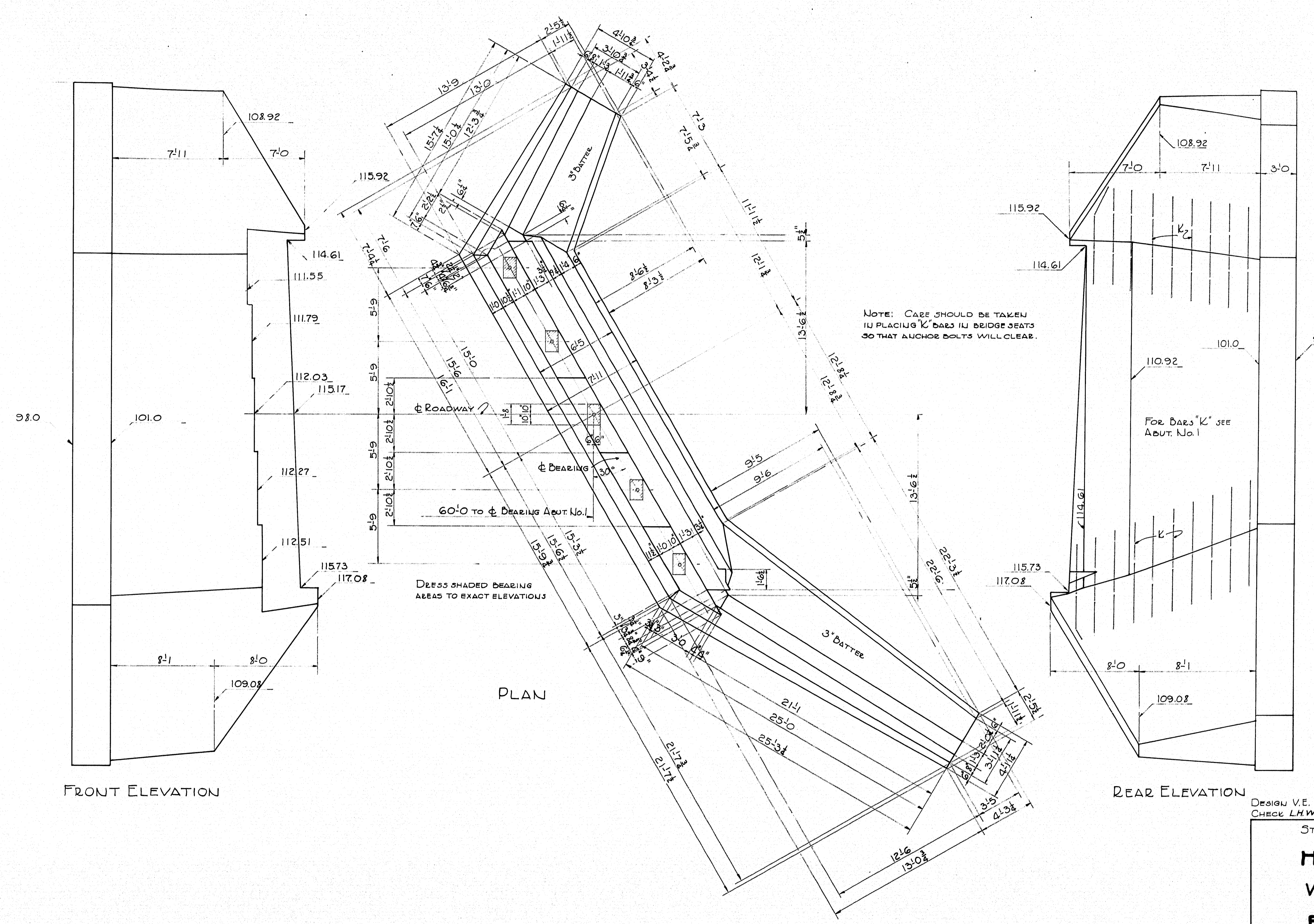


TOWN 04-08
 BRIDGE 32B6

State Highway Commission
 Bridge Division
HAMLIN BRIDGE
 Over
WILSON STREAM
 in the town of
FARMINGTON-FRANKLIN CO.
 Survey Plan

Sheet 1 of 5 Augusta, Maine Oct. 8, 1935

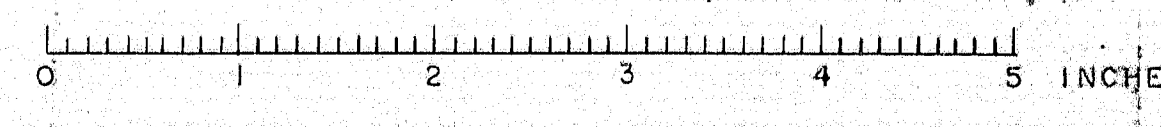
Survey by Beckman
 1/2 Traced by Victory



FRONT ELEVATION

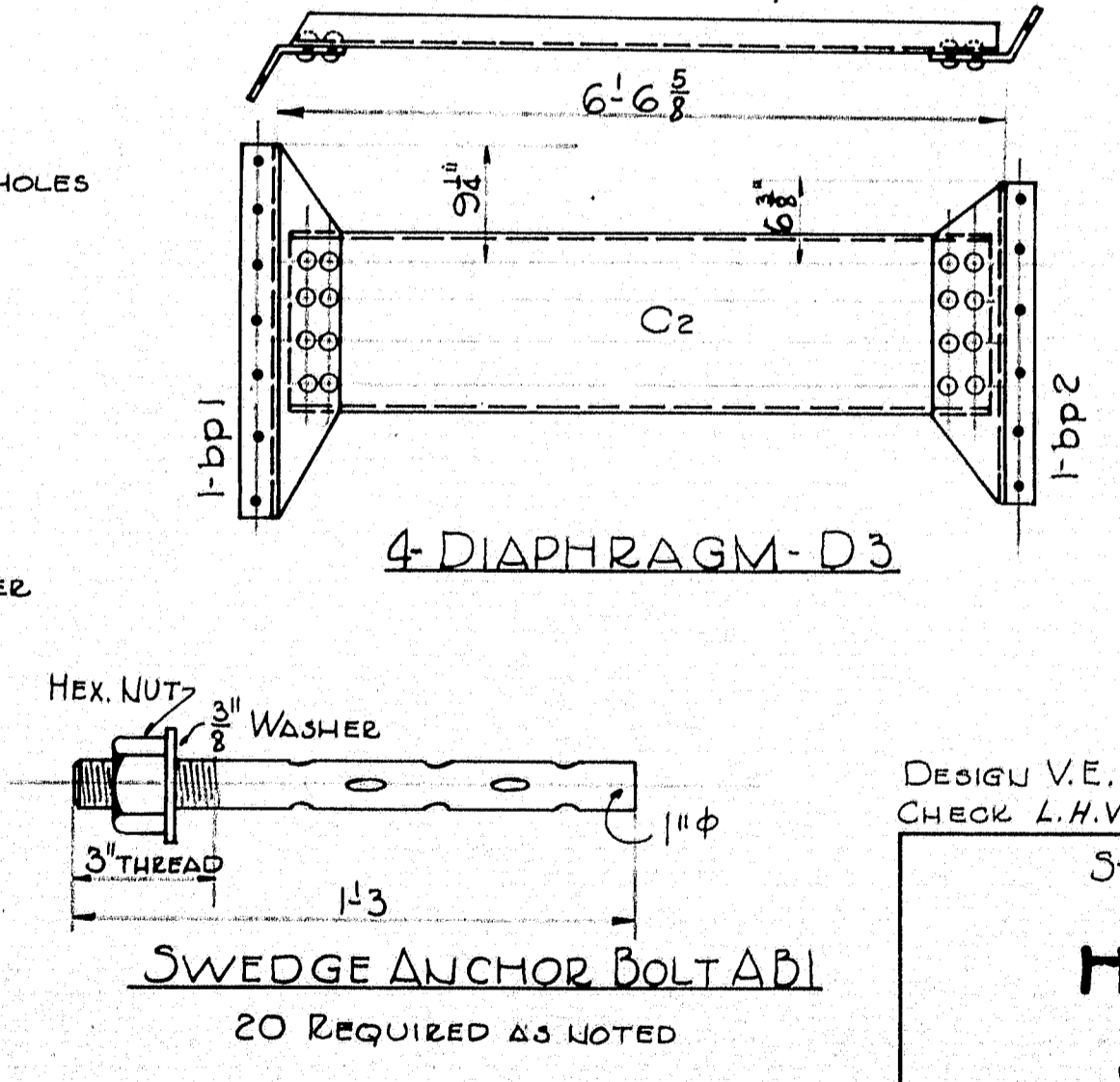
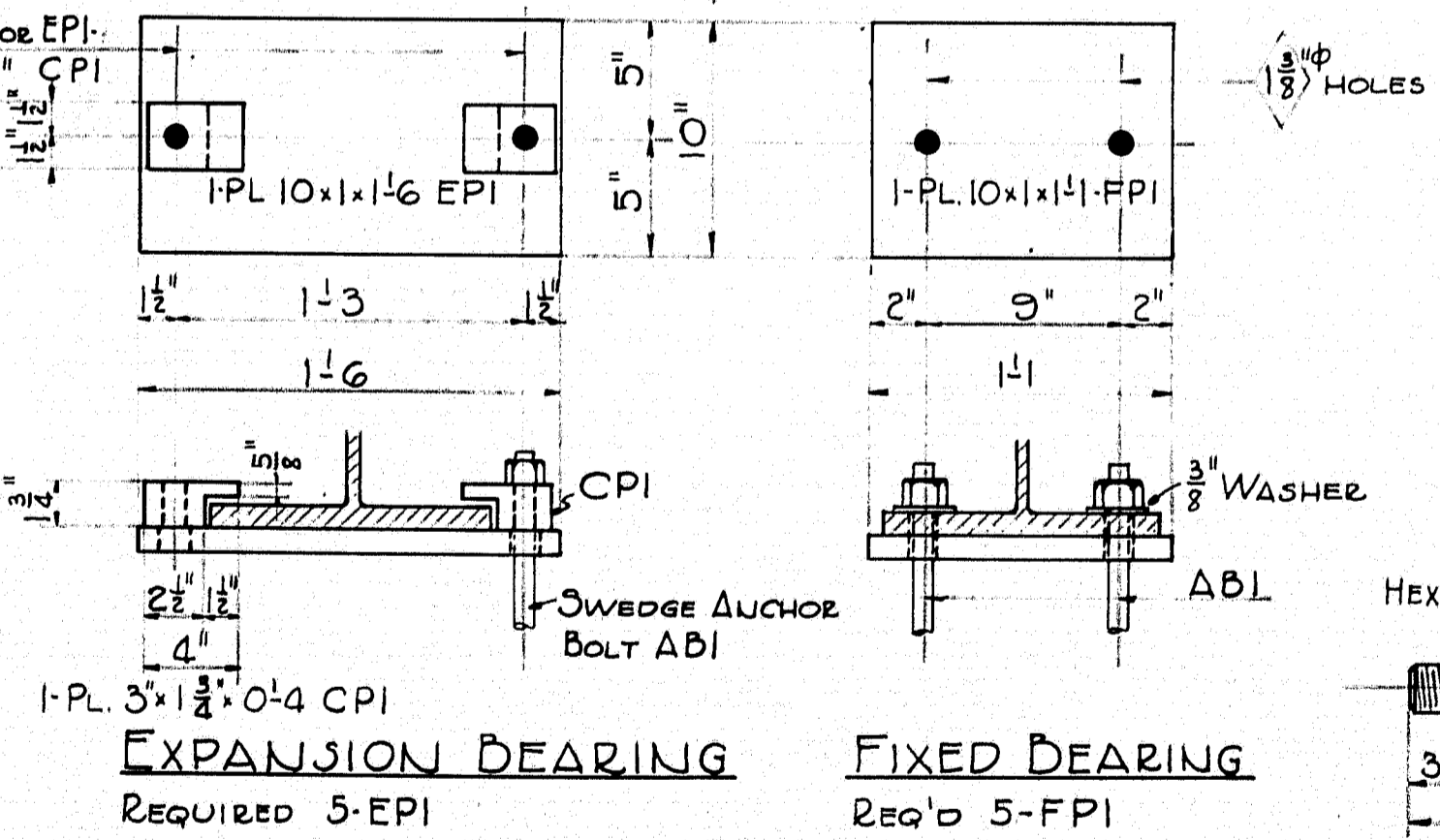
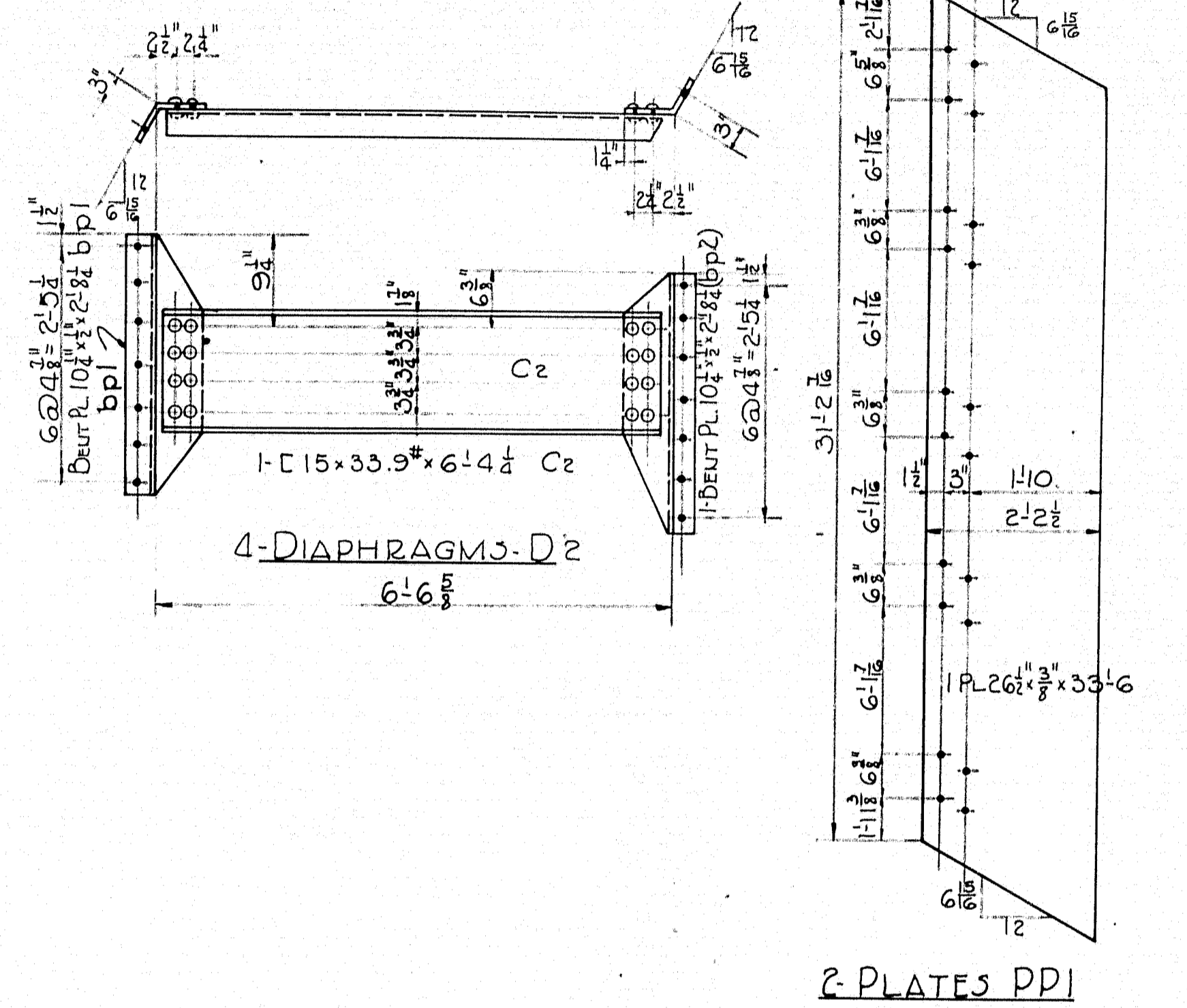
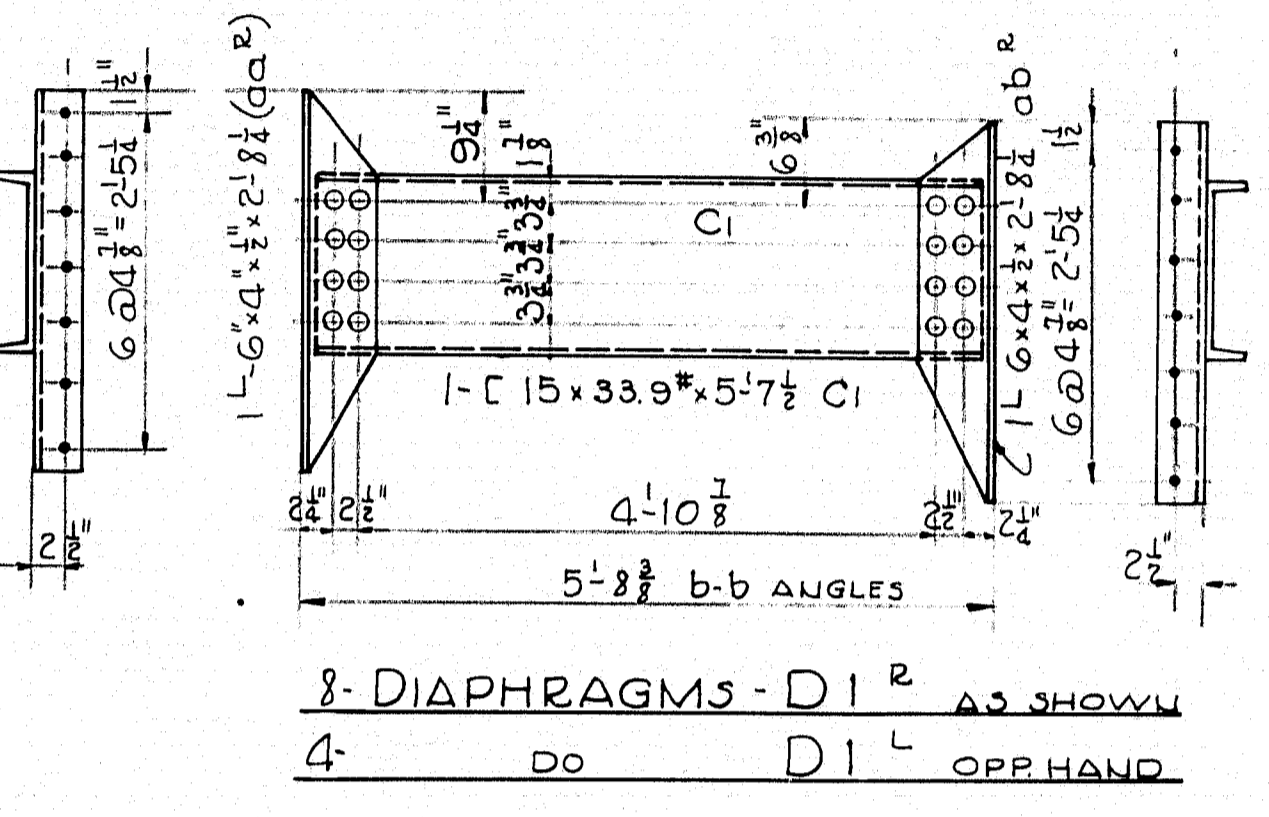
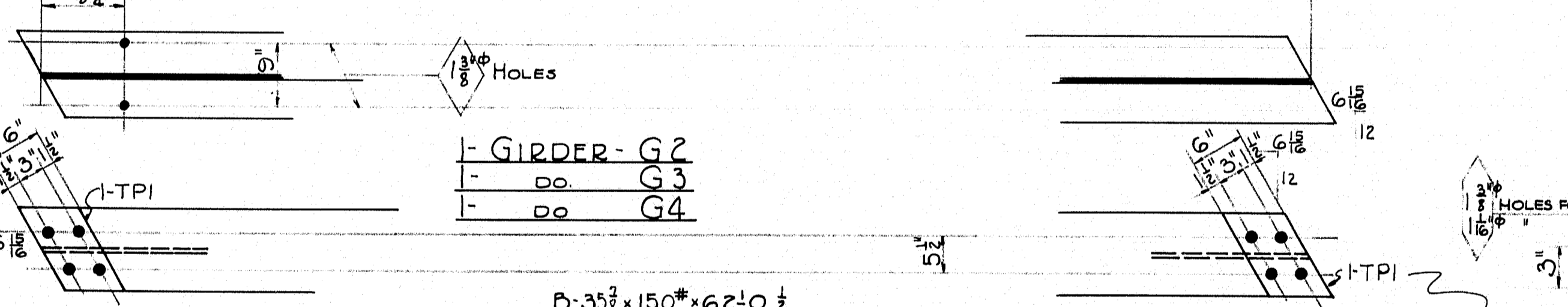
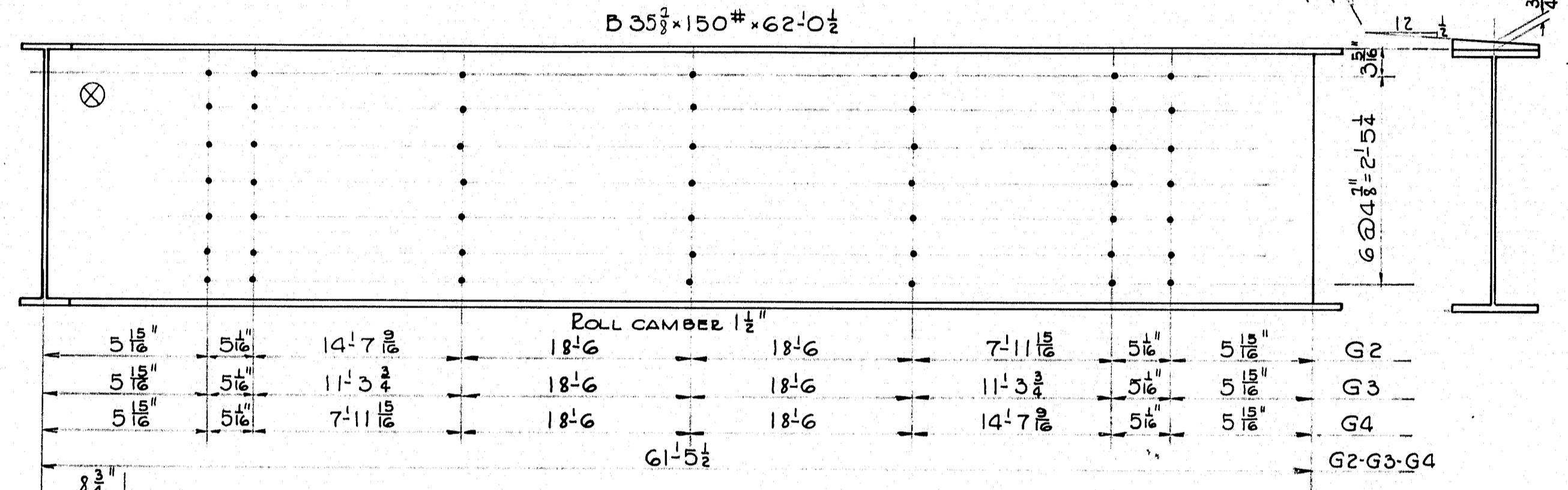
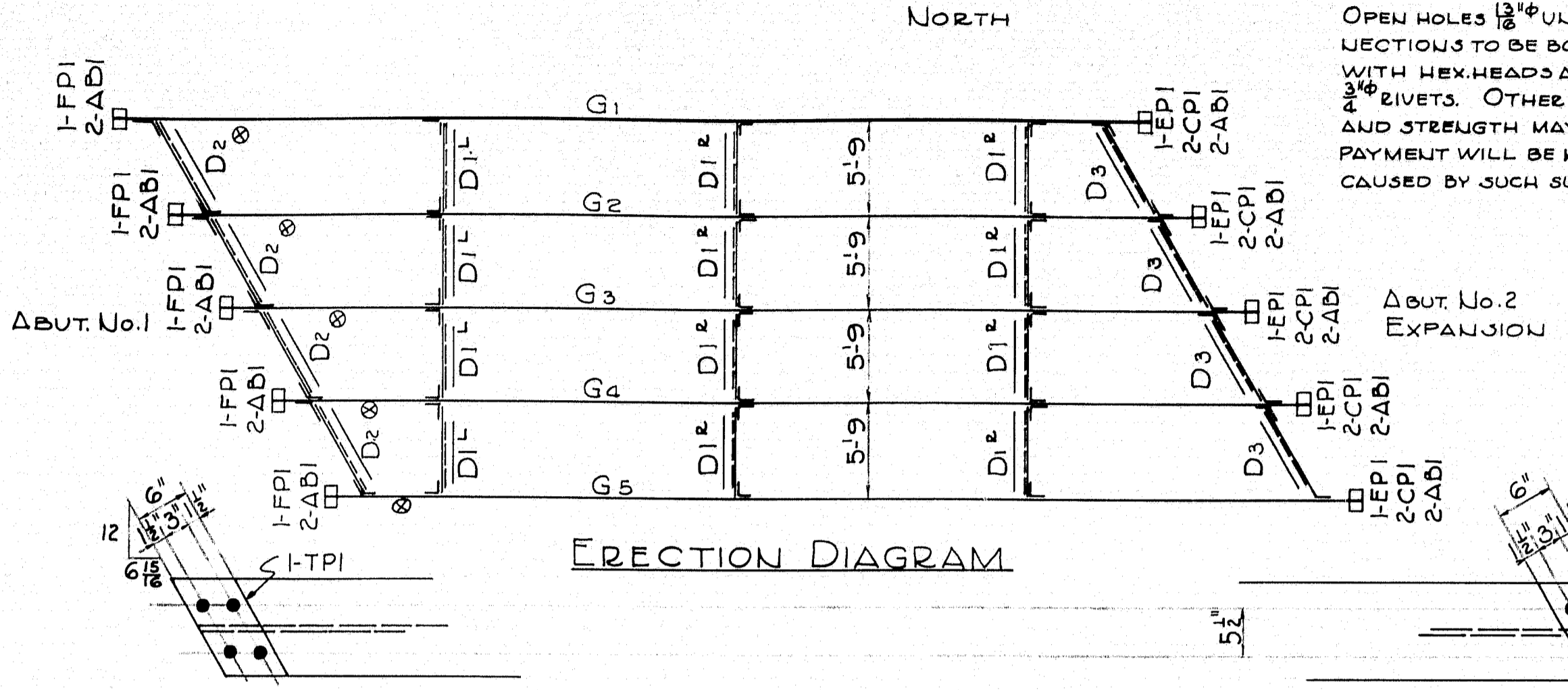
PLAN

REAR ELEVATION



DESIGN V.E. TRACE I.R.
 CHECK L.H.V.
 TOWN 04-08
 BRIDGE 3286
 STATE HIGHWAY COMMISSION
 BRIDGE DIVISION
HAMLIN BRIDGE
 OVER
WILSON STREAM
 IN THE TOWN OF
FARMINGTON
 FRANKLIN COUNTY
 ABUTMENT NO. 2
 SHEET 3 OF 5 SHEETS AUGUSTA ME. MAY 1938

ALL DETAILS TO BE MADE IN ACCORDANCE WITH MAINE STATE HIGHWAY COMMISSION SPECIFICATIONS FOR STEEL HIGHWAY BRIDGES 1937. LOADING H-15. OPEN HOLES 1/8" UNLESS NOTED. ALL FIELD CONNECTIONS TO BE BOLTED. BOLTS TO BE U.S.S. WITH HEX HEADS AND NUTS. SHOP CONNECTIONS 3/4" RIVETS. OTHER SECTIONS OF EQUAL DEPTH AND STRENGTH MAY BE SUBSTITUTED, BUT NO PAYMENT WILL BE MADE FOR ADDITIONAL WEIGHT CAUSED BY SUCH SUBSTITUTIONS.



BOLT LIST

No.	SIZE	LENGTH
154	3/4"	0'-2"
63	3/8"	0'-2 1/2"
40	3/4"	0'-3"

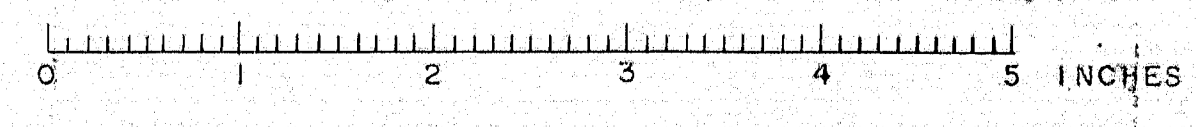
DESIGN V.E. TRACE I.R.
CHECK L.H.W.

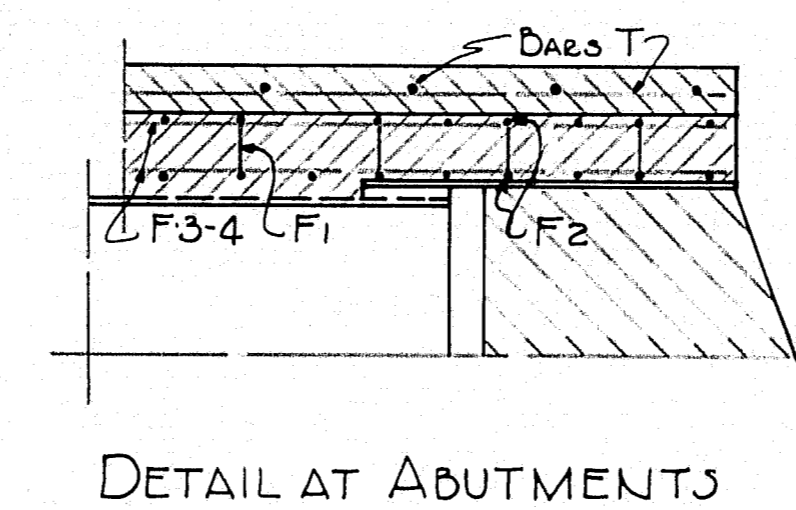
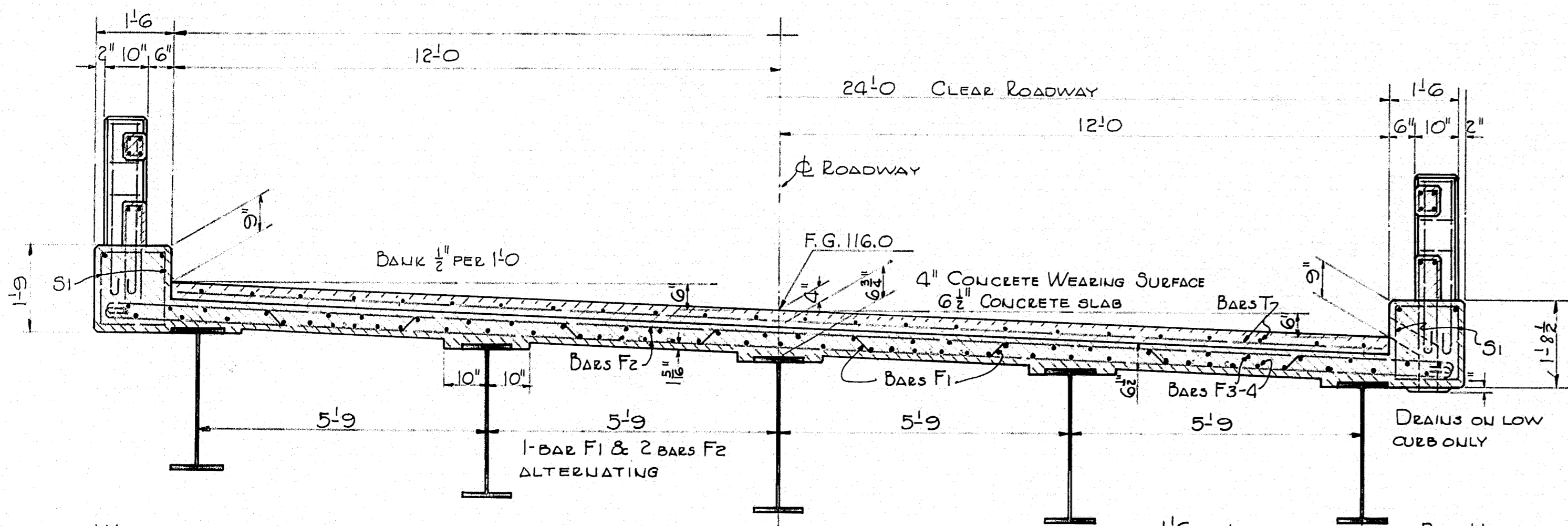
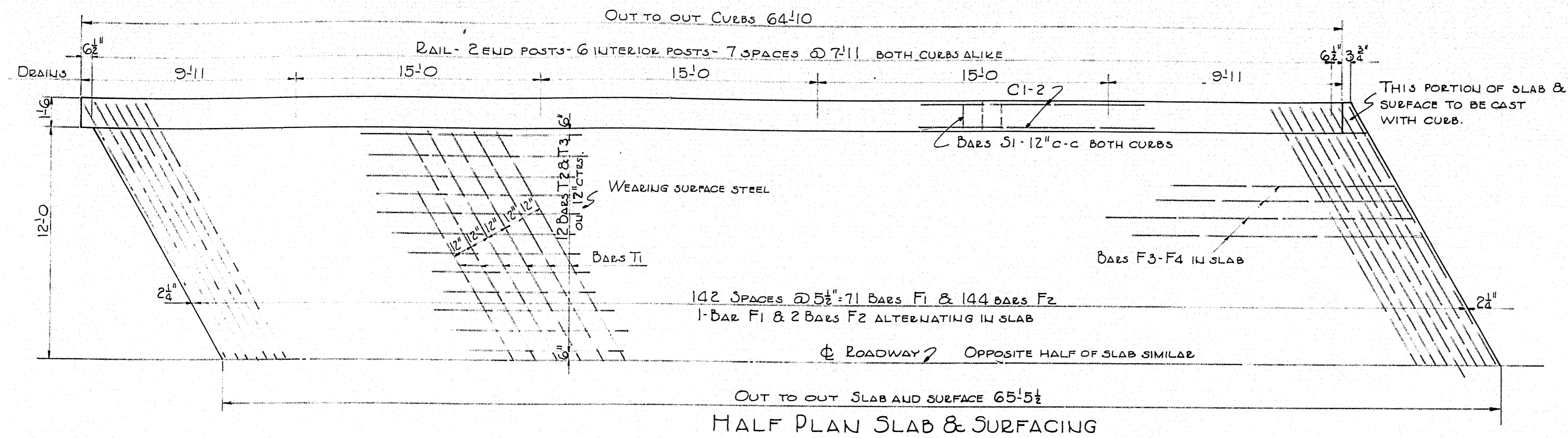
TOWN 04-08
BRIDGE 3286

STATE HIGHWAY COMMISSION
BRIDGE DIVISION

HAMLIN BRIDGE
OVER
WILSON STREAM
IN THE TOWN OF
FARMINGTON
FRANKLIN COUNTY
STEEL DETAILS

SHEET 4 OF 5 SHEETS AUGUSTA ME. MAY 1938



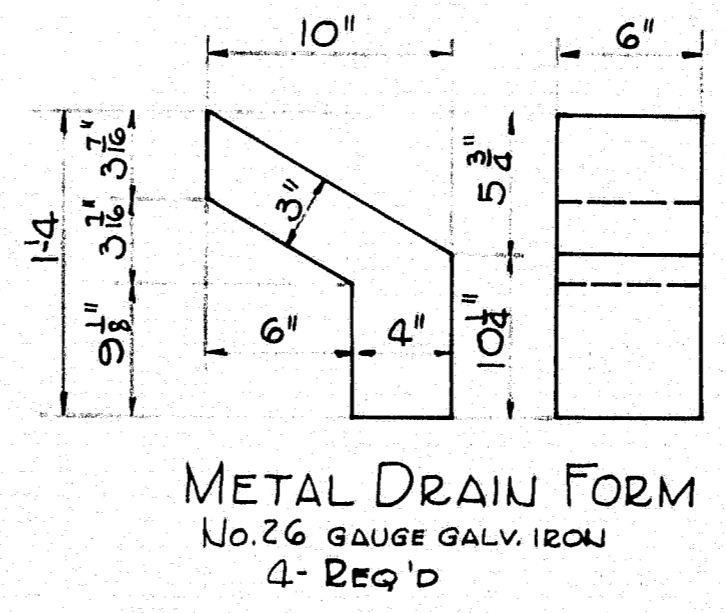


REINFORCING STEEL

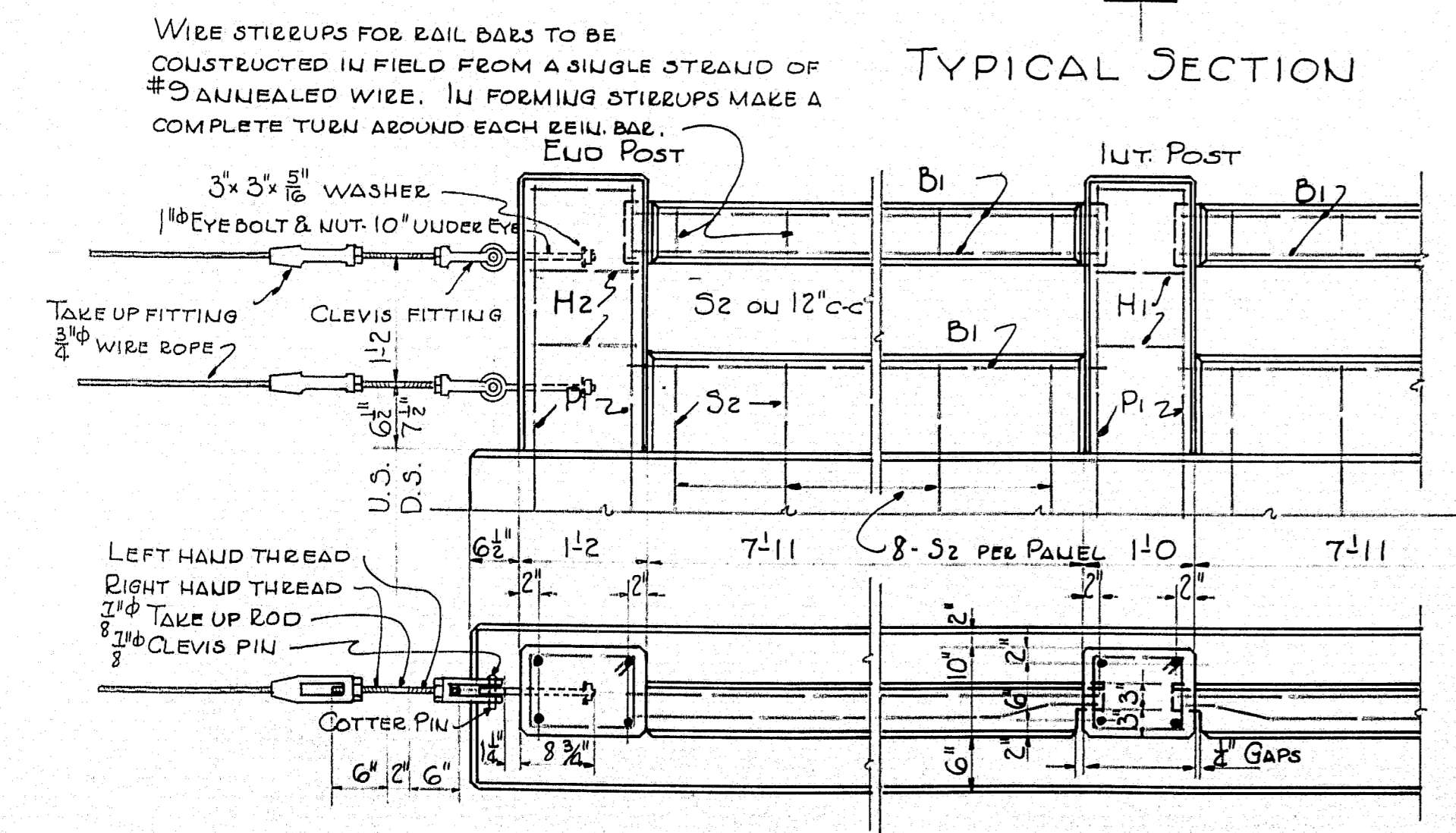
MARK	SIZE	NO.	LENGTH	REMARKS	MARK	SIZE	NO.	LENGTH	REMARKS
C1	1/2"	8	22'-0"	CURB (SPICE)	F3	5/8"	134	23'-8"	SLAB (SPICE)
C2	1/2"	4	24'-6"	"	F4	5/8"	67	22'-6"	"
T1	3/4"	57	27'-4"	SURFACE	T1	3/4"	58	8'-0"	ABUT. & WING WALLS
T2	3/4"	48	23'-0"	" (SPICE)	T2	3/4"	84	8'-3"	RAIL BARS
T3	3/4"	24	22'-2"	"					

ALL STEEL TO BE PLAIN ROUND BARS, STRUCTURAL GRADE.
DIMENSIONS ARE CENTER LINE OF BARS.

RAIL NOTES
CURB TO BE CAST WITH SLAB. STEEL FOR POSTS AND LOWER BAR TO BE PLACED BEFORE CURB IS PLACED. CAST LOWER BAR IN PLACE, WITH LONGITUDINAL STEEL PROJECTING INTO POSTS. PRECAST TOP BAR AND SET IN POSITION WITH ENDS PROJECTING INTO POST FORMS 2". WEAR THE TONGUE ENDS WITH TWO LAYERS OF HEAVY ROOFING. BUILD POST FORMS AND CAST POSTS. CHAMFER EXPOSED EDGES OF CONCRETE 1/4" UNLESS OTHERWISE INDICATED.



SLOT NOTE:
COVER THE 1/2" SLOTS BETWEEN THE SUPERSTRUCTURE AND SUBSTRUCTURE ON THE BACKSIDE WITH TWO LAYERS OF HEAVY ROOFING 10" WIDE. COAT CONCRETE AND BACKSIDE OF EACH LAYER AS APPLIED WITH HOT TAR OR ASPHALT. THE AREA TO BE COVERED BY THE ROOFING IS TO BE RECESSED 1/4" BY NAILING THIN STRIPS TO THE FORMS BEFORE CONCRETE IS PLACED.



BRIDGE ANCHORAGES
REQUIRED 4-ANCHORAGES - GALVANIZED
EACH ANCHORAGE TO CONSIST OF:
2- EYE BOLTS - 2 NUTS AND 2 WASHERS
2- CLEVIS PINS AND 2 COTTER PINS.
2- CLEVIS FITTINGS
2- TAKE UP BARS
2- TAKE UP FITTINGS
PORTION OF WIRE ROPE FOR 2 CABLES BETWEEN LAST WOODEN POST ON APPROACH AND FITTINGS.

DESIGN V.E. TRACE I.R.
CHECK L.H.W.

TOWN 04-03
BRIDGE 3286

STATE HIGHWAY COMMISSION
BRIDGE DIVISION

HAMLIN BRIDGE
OVER
WILSON STREAM
IN THE TOWN OF
FARMINGTON
FRANKLIN COUNTY
SUPERSTRUCTURE DETAILS

SHEET 5 OF 5 SHEETS AUGUSTA ME. MAY 1938

