

STATE OF MAINE STATE HIGHWAY COMMISSION

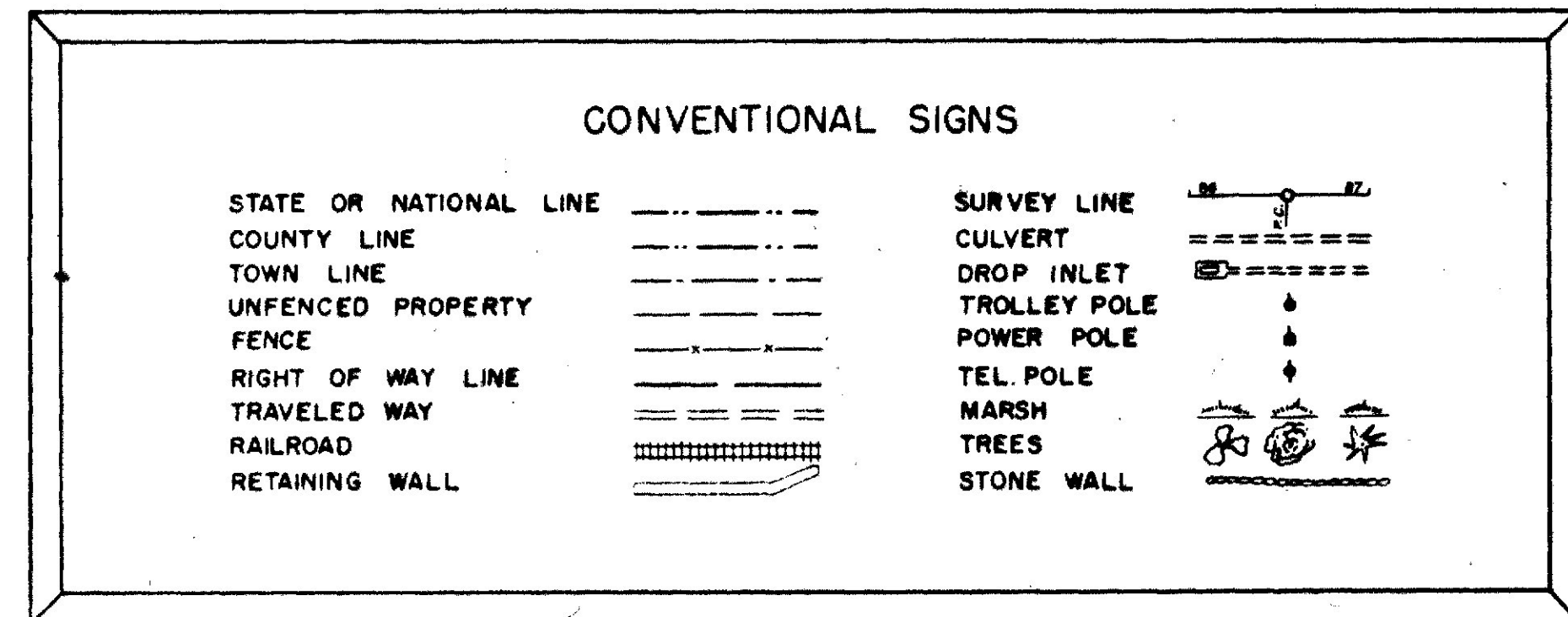
PLANS

FORT KENT AROOSTOOK COUNTY MAINE STATE PROJECT NO. 338(502)

TOTAL LENGTH 0.265 MILES

SCALES
 PLAN 1 IN. = 25 FT.
 PROFILE 1 IN. = 25 FT.
 CROSS SECTIONS 1 IN. = 5 FT.

MICROFILM REEL 138

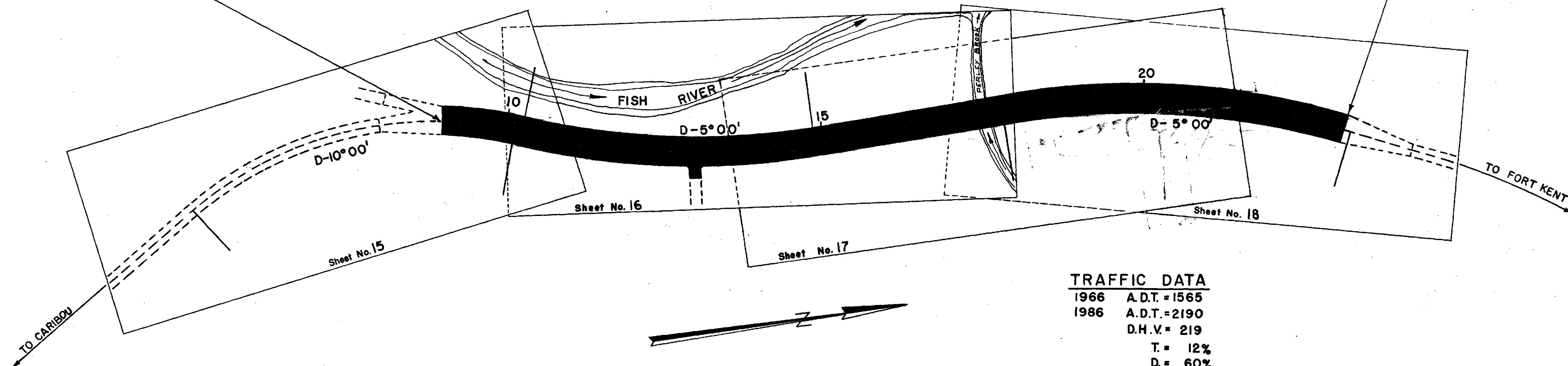


INDEX OF SHEETS		
SHEET NO. 1	TITLE PAGE	STA. 9+0 to 23+0
SHEET NO. 2	TYPICAL SECTIONS	
SHEET NO. 3	QUANTITIES	
SHEET NO. 4-11	STANDARD DETAILS	
SHEET NO. 15-18	PLAN AND PROFILE	STA. 9+0 to 23+0
SHEET NO. 19-31	CROSS-SECTIONS	STA. 9+0 to 23+0
SHEET NO. 12-14	BRIDGES (REVISED)	STA. 17+47
SHEET NO.	SPECIAL DETAILS	

Sheets 12-14 to B. McInt

STATION 9+00 BEGIN PROJECT 338(502)

STATION 23+00 END PROJECT 338(502)



TRAFFIC DATA

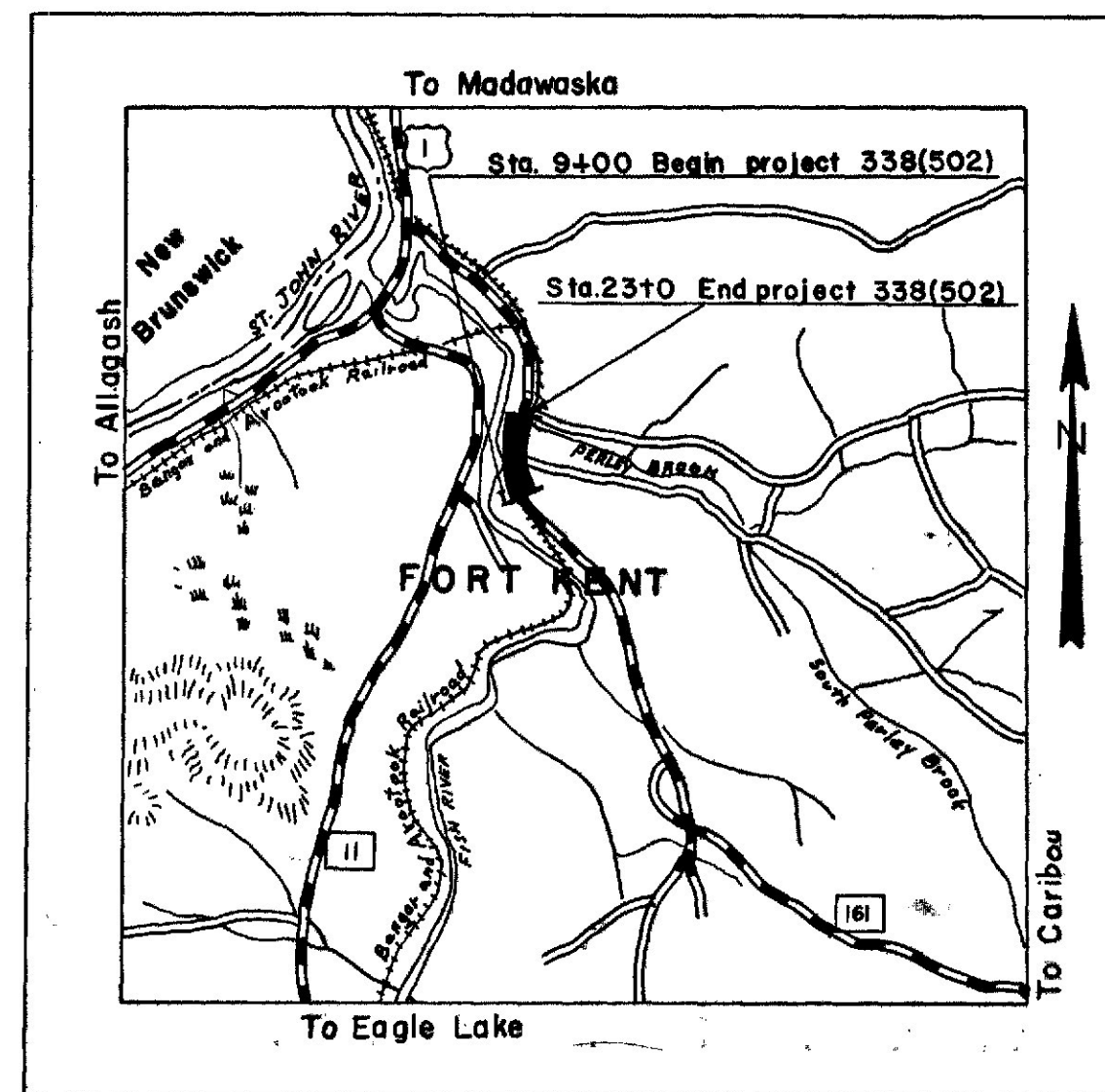
1966 A.D.T. = 1565
 1986 A.D.T. = 2190
 D.H.V. = 219
 T = 12%
 D = 60%
 V = As Posted
 18 K = 87

NOTE:

All work contemplated under this contract to be governed by and in conformity with the Standard Specifications (Revision of June 1965) and Supplements thereto, except as modified on the plans and in the Special Provisions.

LAYOUT PLAN

Scale 1 inch = 100 feet



A PORTION OF AROOSTOOK COUNTY
Scale 1 in. = 1 mile

APPROVED:

MAINE STATE HIGHWAY COMMISSION

DATE

David J. Stinson CHAIRMAN

Sept 22, 1965

Carl M. Stetson

Sept 22, 1965

Richard A. Lechard

Sept 22, 1965

Barbara M. Goss CHIEF ENGINEER

Sept 22, 1965

DEPARTMENT OF COMMERCE
BUREAU OF PUBLIC ROADS
REGION 1

APPROVED:

DIVISION ENGINEER DATE

STANDARD SECTION STATE PROJ. NO. 338(502) BIT. CONC. SURF. CRS. HOT BIT. PAVEMENT

Superelevation shall be as specified in A.A.S.H.O. Policy of Geometric Design of Rural Highways. (e) The max. superelevation shall not exceed 0.08 per ft. width of pavement. All curves shall have full superelevation at the first 50' sta. occurring a min. distance of 50' after the P.C. and a min. distance of 50' before the P.T. with a transition of 200' unless otherwise specified. When superelevation exceeds 3/4" per ft., inside shoulder shall have same slope as pavement.

Curves of 600' or more shall be widened. The extra width expressed in feet is given by the formula $D/10+2$. Widening and superelevation may be limited by local conditions.

The pavement and base depths as shown on the plans is intended to be nominal. Base depths may be changed to meet local conditions.

Where a 2:1 backslope is not practicable, use 1 1/2:1 Slope in cuts. Construct berm ditch where needed.

Seeding Method No.1 and sodded areas shall require a maximum depth of four (4) inches of loam, unless otherwise specified.

All embankment slopes, ditches and backslopes on this project, shall be seeded by Method No.2 with a max. depth of two(2) inches of loam, except where sodding or seeding Method No.1 is noted on the plans.

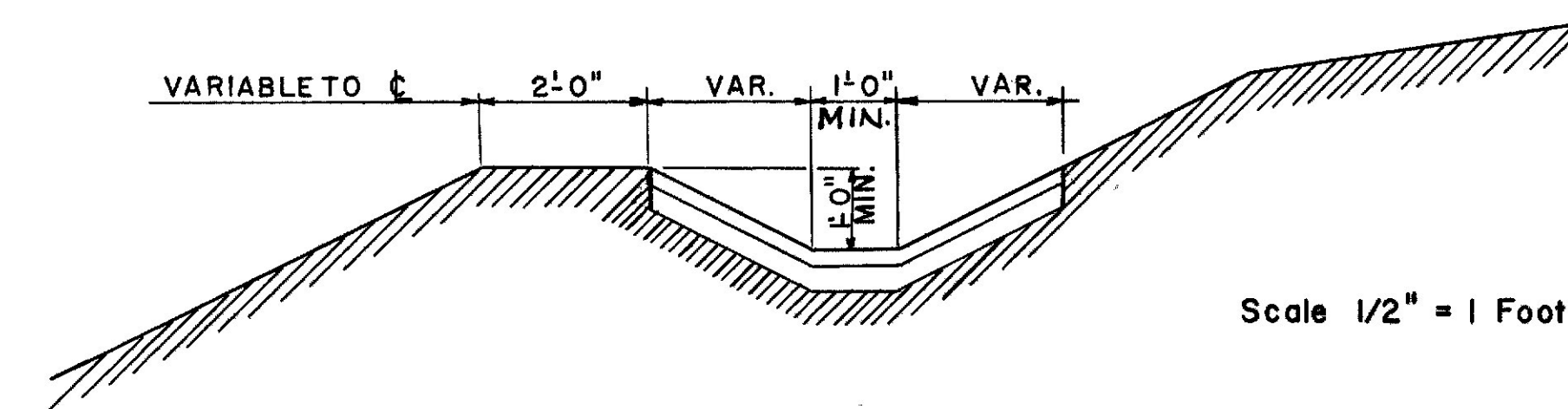
HOT BITUMINOUS MIX DATA

DESCRIPTION	GRAD-ATION	ITEM NO.	ASPHALT RANGE	THICK-NESS	NO. LAYERS	NOTES
Wearing	C-1	403.081	6.4-7.5	1	1	1, 2
Primary	C	403.08	5.5-6.8	3	2	1, 2
Sidewalk	C-1	608.09	6.4-7.5	2	2	1, 2
Islands	C-1	403.081	6.4-7.5	2	2	1, 2
Downspouts	C-1	403.081	6.4-7.5	-	-	1, 2
Level Mix	E	413.12	6.8-9.0	-	-	1, 2

1. All bituminous mixes shall use 85-100 grade Asphalt Cement as a binding agent.

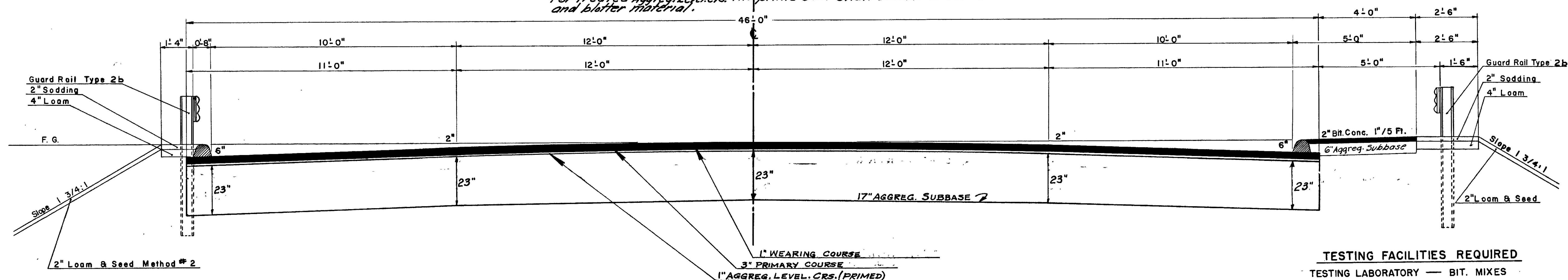
2. Asphalt contents listed are to serve as a guide. They are not specification limits.

For Treated Aggreg. Level Crs. The prime coat shall consist of RT-5 and blutter material.



BERM DITCH & SODDED GUTTER

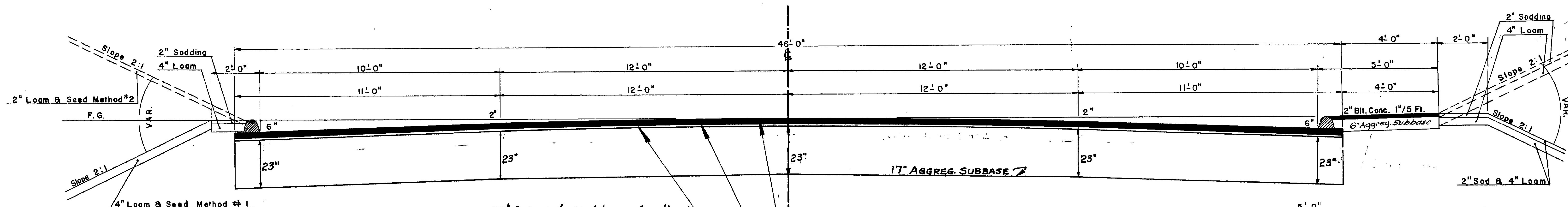
Scale 1/2" = 1 Foot



URBAN WITH GUARD RAIL

TESTING FACILITIES REQUIRED

TESTING LABORATORY — BIT. MIXES
TESTING LABORATORY — BIT. LIQUIDS
TESTING LABORATORY — SOILS

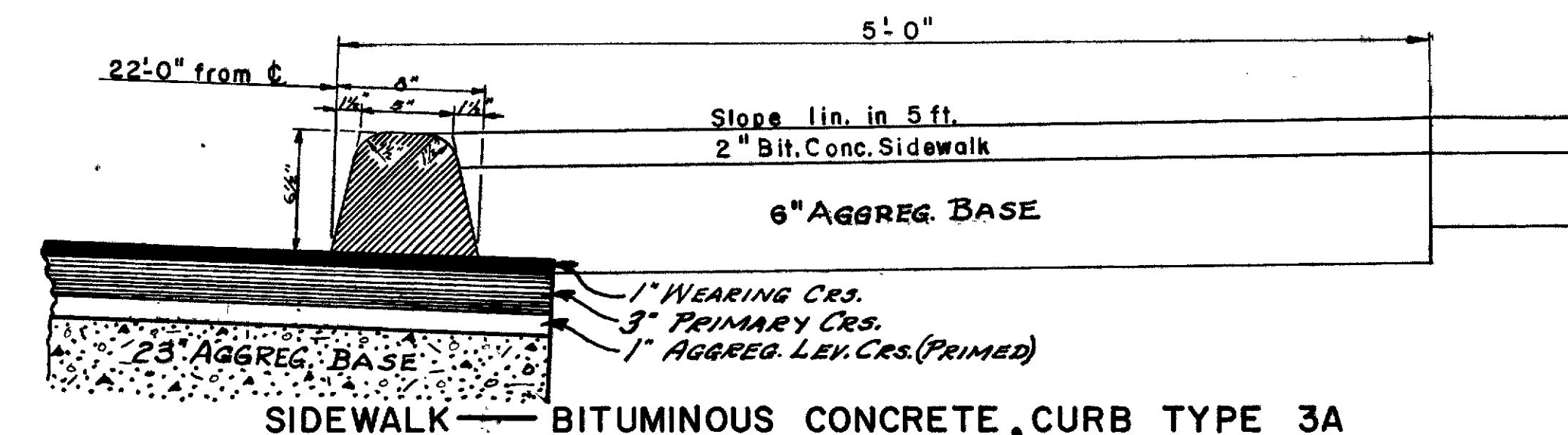


NORMAL URBAN

23' Aggregate Subbase Applies to Sta. 9+0 to Sta. 23+0

QUANTITIES PER 100 L.F.

1" Wearing Crs.	46' Wide	28.11 TONS
3" Primary Crs.	46' "	84.33 "
2" Bit. Conc. Surf. Crs. (Sidewalk)	45' "	7.75 "
1" Aggreg. Level Crs. (Primed)	46' "	14.20 C.Y.
6" Agg. Subbase Crs. (Sidewalk)	45' "	8.33 C.Y.
23' Agg. Subbase "	46' "	329.00 "



SIDEWALK — BITUMINOUS CONCRETE, CURB TYPE 3A

Scale 1/2" = 1 Foot

ESTIMATED QUANTITIES

STATION	A.C.C.M.P. LEFT EXTENSION		R.C.P.		A.C.C.M.P. RIGHT EXTENSION		B.C.C.M.P.		C.M.P.		CATCH BASINS				DROP INLETS		MAN- HOLES		UNDERDRAINS				REMARKS	
	SIZE	LENGTH	SIZE	LENGTH	SIZE	LENGTH	SIZE	LENGTH	SIZE	LENGTH	A	B	C	D	E	A	B	A	B	TYPE		TYPE C		
																				A	B	SIZE		LENGTH
Sta 8+95 Lt. to 9+0 Rt.							18"	56'															Between Catch Basins	
Sta 9+0 Rt.							12"	10'															Stub with spec. inlet grate	
Sta 12+0 Lt.							18"	34'															Outlet	
Sta 12+0							18"	38'															Between Catch Basins	
Sta 13+76 Lt. to 13+86 Rt.							12"	40'															Between Catch Basins - Skew Angle	
Sta 16+22 Rt.							15"	58'															Outlet	
Sta 18+82 Lt.							18"	68'															Outlet - Skew back Lt.	
Sta 18+82 Lt. to 18+90 Rt.							18"	38'															Between Catch Basins	
Sta 23+0							12"	38'															Between Catch Basins	
Underdrain																								
Sta 8+92 to 8+98 Rt.																					15"	6'	Stub	
Sta 9+02 to 11+98 Rt.																					18"	296'		
Sta 12+05 to 13+84 Rt.																					12"	184'		
Sta 13+88 to 16+22 Rt.																					15"	235'		
Sta 18+92 to 22+98 Rt.																					15"	406'		
Catch Basins																								
Sta 8+95 39 Lt.																								
Sta 9+0 Rt.																								
Sta 12+0 Rt.																								
Sta 12+0 Lt.																								
Sta 13+76 Lt.																								
Sta 13+86 Rt.																								
Sta 16+22 Rt.																								
Sta 18+82 Lt.																								
Sta 18+90 Rt.																								
Sta 23+0 Lt.																								
Sta 23+0 Rt.																								
Metal Sluice																								
Sta 16+0 Lt.																							18" x 34' Metal Sluice & Extra Baffle	
Bridge																								
Sta 17+47																							Twin 15 1/2" Structural Plate Pipes - See Sheets 12, 13, 14 For Detail	
										</														

ITEM NO	DESCRIPTION	QUANTITY	UNIT
201.13	Removing Single Trees - 9" to 24" Tops only	3	Each
201.19	Removing Stumps 9" to 24"	3	Each
202.083	Removal of Building No. 3	Nec.	L.S.
202.10	Removal of Existing Superstructure (Property of Contractor)	Nec.	L.S.
203.20	Common Excavation	8,000	Cu.Yd.
203.24	Common Borrow	3,000	Cu.Yd.
203.25	Granular Borrow	1,400	Cu.Yd.
206.06	Str. Earth Excav. Drainage & Minor Strs.	1,000	Cu.Yd.
206.07	Str. Rock Excav. Drainage & Minor Strs.	75	Cu.Yd.
304.10	Aggregate Subbase Course - Gravel	6,500	Cu.Yd.
403.08	Hot Bit. Pavement (Grading C-1)	1,400	Tons
403.081	Hot Bit. Pavement (Grading C-1)	480	Tons
408.11	Bit. Material for Prime Coat	4,500	Gals.
408.12	Blotter Material	70	Cu.Yds
411.09	Untreated Aggregate Sur face Course	250	Cu.Yd.
509.11	156 Each Structural Plate Pipes (Includes Pipes No. 1 & No. 2 as shown in the plans)	Nec.	L.S.
603.152	12-inch Bit Coated Corr. Metal Pipe	100	L.F.
603.161	15-inch Corrugated Metal Pipe	40	L.F.
603.162	15-inch Bit. Coated Corr. Metal Pipe	60	L.F.
603.172	18-inch Bit. Coated Corr. Metal Pipe	220	L.F.
603.76	12-Inch Inlet Gate Unit	1	Each
604.09	Catch Basins Type B-1	10	Each
604.11	Catch Basins Type C-1	1	Each
605.11	12-inch Underdrain Type C	200	L.F.
605.12	15-inch Underdrain Type C	600	L.F.
605.13	18-inch Underdrain Type C	300	L.F.
606.13	Guard Rail Type 2b	480	L.F.
606.25	Anchorage for Cable Guard Rails	6	Each
608.09	Bituminous Sidewalk	80	Tons
609.32	Curb Type 3a	2,450	L.F.
610.09	Hand Laid Riprap	65	Cu. Yd.
612.06	Bituminous Hand Sealing - Black	270	Sq. Yd.
612.07	Bituminous Hand Sealing - Green	115	Sq. Yd.
614.09	Metal Sluice - 18 Inch	34	L.F.
614.14	Metal Sluice Entrance Baffle - 18 Inch	1	Each
615.07	Loam	400	Cu. Yd.
616.08	Sodding	650	Sq. Yd.
618.13	Seeding - Method Number 1	15	Unit
618.14	Seeding - Method Number 2	20	Unit
619.08	Hay Mulch	2	Tons
623.06	Right-of-Way Monuments	17	Each
624.06	Project Markers	2	Each
625.05	Hand Labor, Straight Time	20	M.Hr.
630.06	Traffic Officers, Straight Time	100	M.Hr.
631.09	Aerator (inc. operator & hauler)	30	Hour
631.10	Air Compressor (inc. operator)	30	Hour
631.11	Air Tool (inc. operator)	30	Hour
631.12	All Purpose Excavator (inc. operator)	30	Hour
631.13	Bulldozer (inc. operator)	30	Hour
631.14	Grader (inc. operator)	30	Hour
631.17	Truck (including operator)	30	Hour
632.03	Warning Lights	3	Group
636.06	Reflectization of Bituminous Concrete	110	Sq. Yd.
637.07	Sprinkling	20	M.G.
637.08	Calcium Chloride	5	Tons
639.09	Field Office, Type B	1	Each
639.11	Testing Facilities	Nec.	L.S.

Apparent Utilities
Maine Public Service Co.
Fort Kent Telephone Co.
Fort Kent Water Co.

EARTH EXCAVATION FOR ESTIMATE	
EARTH EXCAVATION (FROM CROSS SECTIONS)	7501
EARTH FROM DRIVES, SCARIFYING, ETC.	190
GRUBBING IN FILL SECTIONS	146
STRUCTURAL EARTH EXCAVATION	652

TOTAL EARTH EXCAVATION	8489
<u>FILL FOR BORROW CALCULATION</u>	
FILL(FROM CROSS SECTIONS)	9443
GRUBBING (FILL AREAS)	146
TOTAL FILL	9589

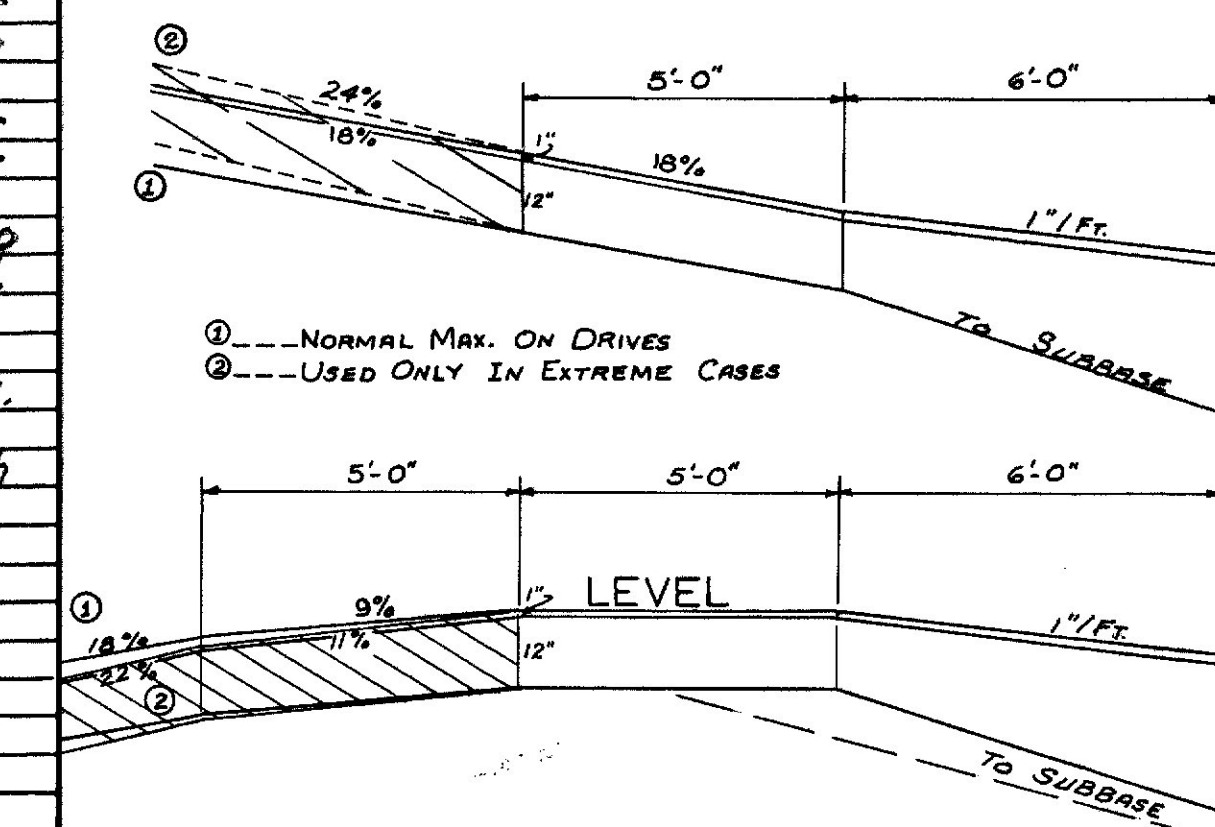
AVAILABLE EARTH EXCAVATION FOR COMMON BORROW CALCULATIONS

TOTAL EARTH EXCAVATION	8 489
DEDUCTIONS	
GRUBBING IN FILL AREAS	<u>146</u>
TOTAL AVAILABLE EARTH EXCAVATION	<u>8 343</u>

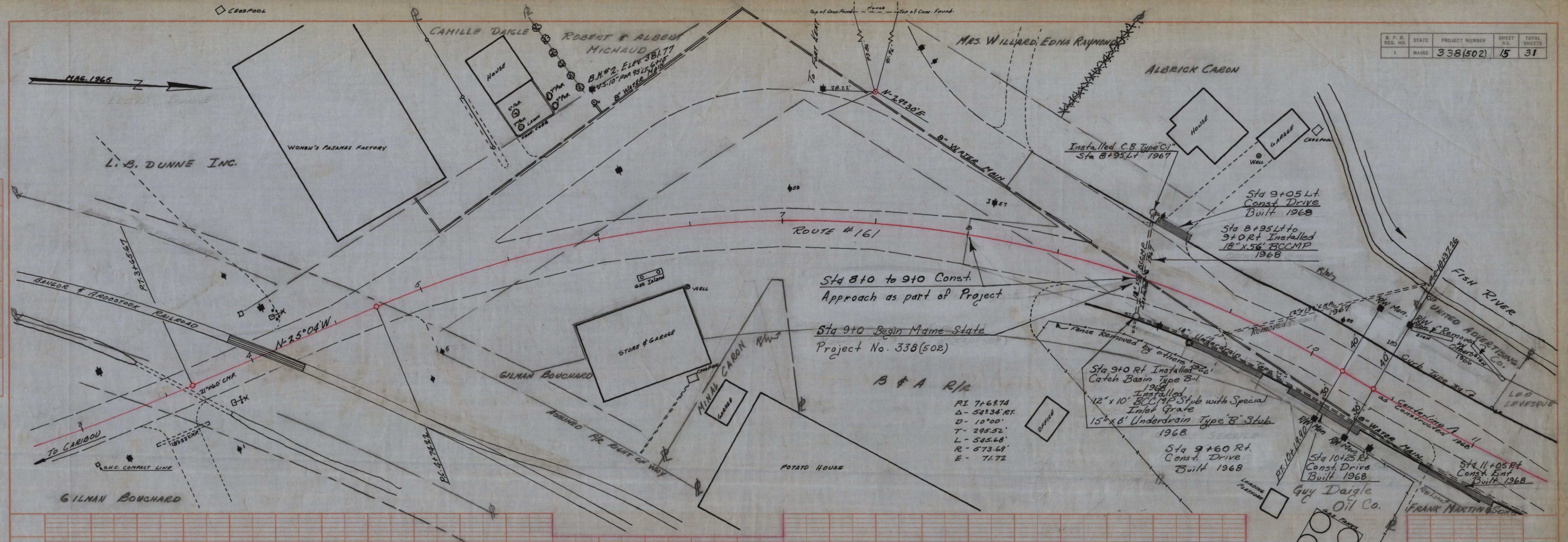
TOTAL FILL		<u>9 589</u>
TOTAL AVAILABLE EARTH	<u>8343</u> x 0.85 (Var.) =	<u>7092</u>
TOTAL AVAILABLE EARTH		<u>7092</u>
TOTAL FILL MINUS TOTAL AVAILABLE EARTH =		<u>2497</u>
COMMON BORROW = 2497 x 1.15 =		<u>2872</u>

Diagram illustrating a driveway and sidewalk area. The driveway is labeled "DRIVE" and is associated with "ITEM NO. 403.082". The sidewalk is labeled "SIDEWALK" and is associated with "ITEM NO. 608.09".

12" AGGREGATE SUBBASE — GRAVEL
1" UNTREATED AGGREGATE SURFACE CRS.

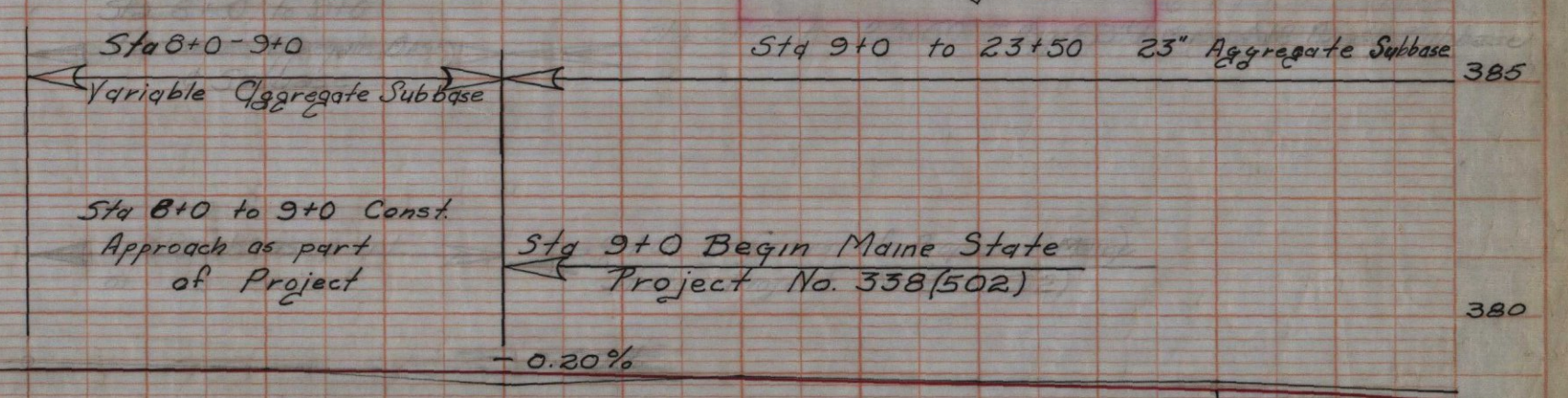


B. P. R. REG. NO.	STATE	PROJECT NUMBER	SHEET NO.	TOTAL SHEETS
1	MAINE	338(502)	15	31



Right of Way Monuments
 P.T. Sta 10+19.90 40' Lt. & 30' Rt.
 P.C. Sta 10+37.26 40' Lt. & 30' Rt.

Curb Type 39
 Sta 8+54-22+82 Lt.
 Sta 8+72-23+04 Rt.



- 1) All residential & commercial entrances being reconstructed and having a grade of 10% or greater shall receive bituminous treatment or be paved, unless otherwise shown or directed.
- 2) Entrance construction materials unless otherwise shown or directed. 1" Aggregate Surface Course; 12" Agg. Subbase.
- 3) Loam & Sod inlets & outlets of all entrance and roadway Culverts unless otherwise directed by the Engineer.
- 4) All drives & entrances shall be 20' wide unless otherwise shown or directed.

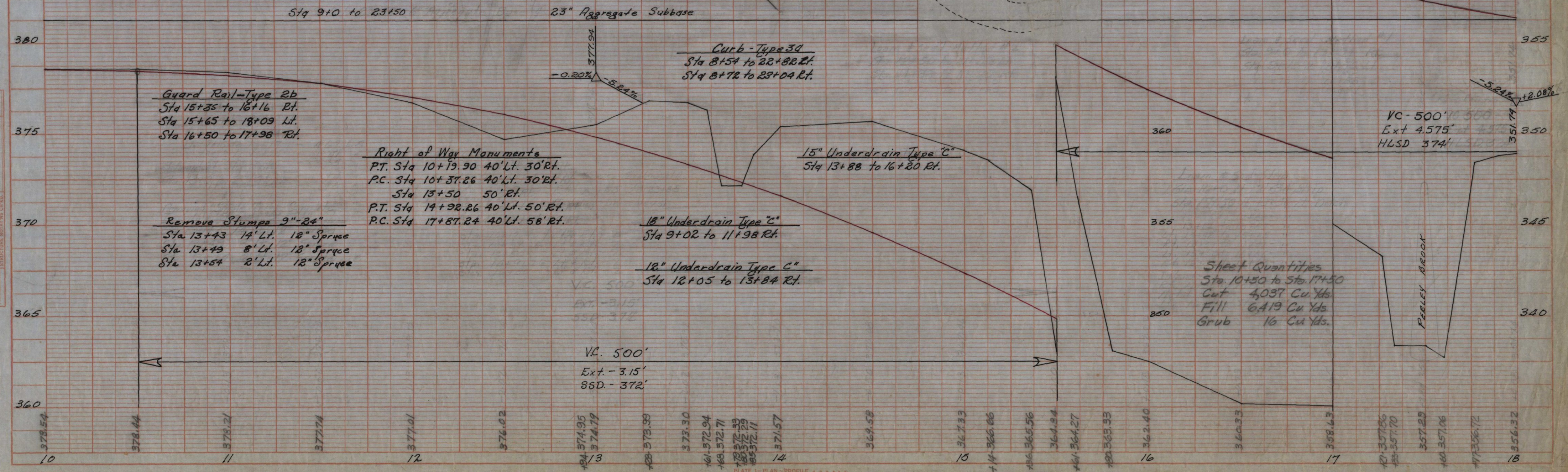
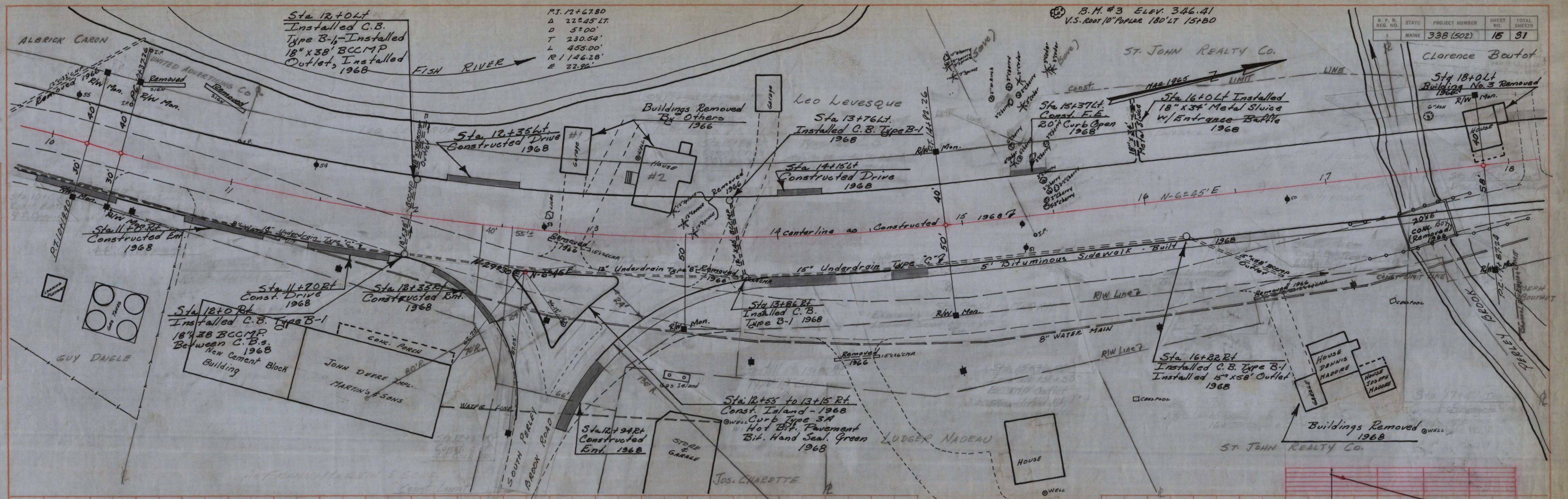
18" Underdrain Type "C" Installed 1967
 Station 9+02 Rt. - 11+98 Rt. 296 L.F.

15" Underdrain Type "C"
 Station 8+92 Rt. - 8+98 Rt. 6' Stub

Sheet Quantities
 Sta 8+0 to Sta 10+50
 Cut 6,101 Cu. Yds.
 Fill 11 Cu. Yds.

DATE 1/15/68
BY L. G. Gagnier
SUPERVISOR
NOTED BOOK GRADES CHECKED
B. M. #3 NOTED
STRUCTURE QUANTITIES CHECKED

DATE 1/15/68
BY L. G. Gagnier
SUPERVISOR
NOTED BOOK GRADES CHECKED
B. M. #3 NOTED
STRUCTURE QUANTITIES CHECKED



ROUTE #161 MARKET ST FORT KENT STA. 10+0 TO 18+0

51

PLAN	DATE
NO.	
SURVEYED BY	
NOTED BY	
CHECKED BY	
DATE	

PROFILE	DATE
NO.	
SURVEYED BY	
NOTED BY	
CHECKED BY	
DATE	

