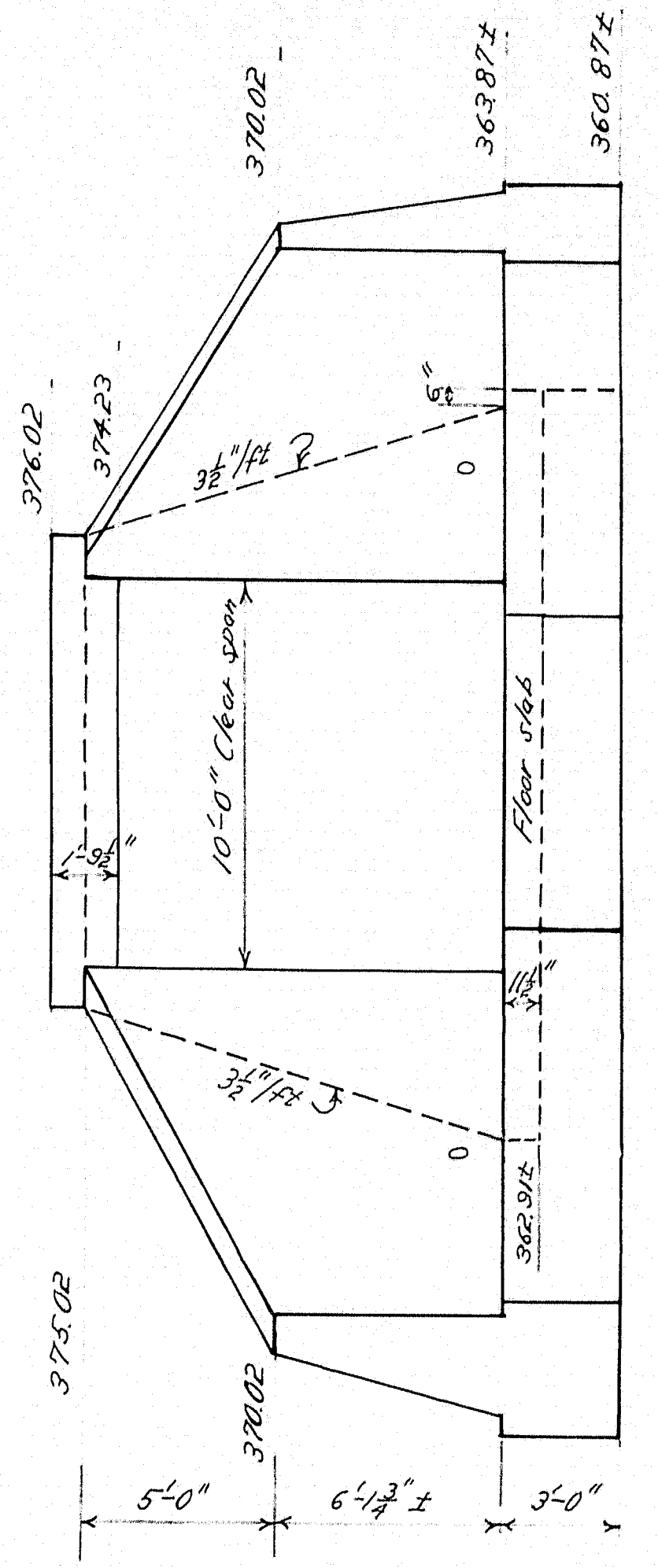
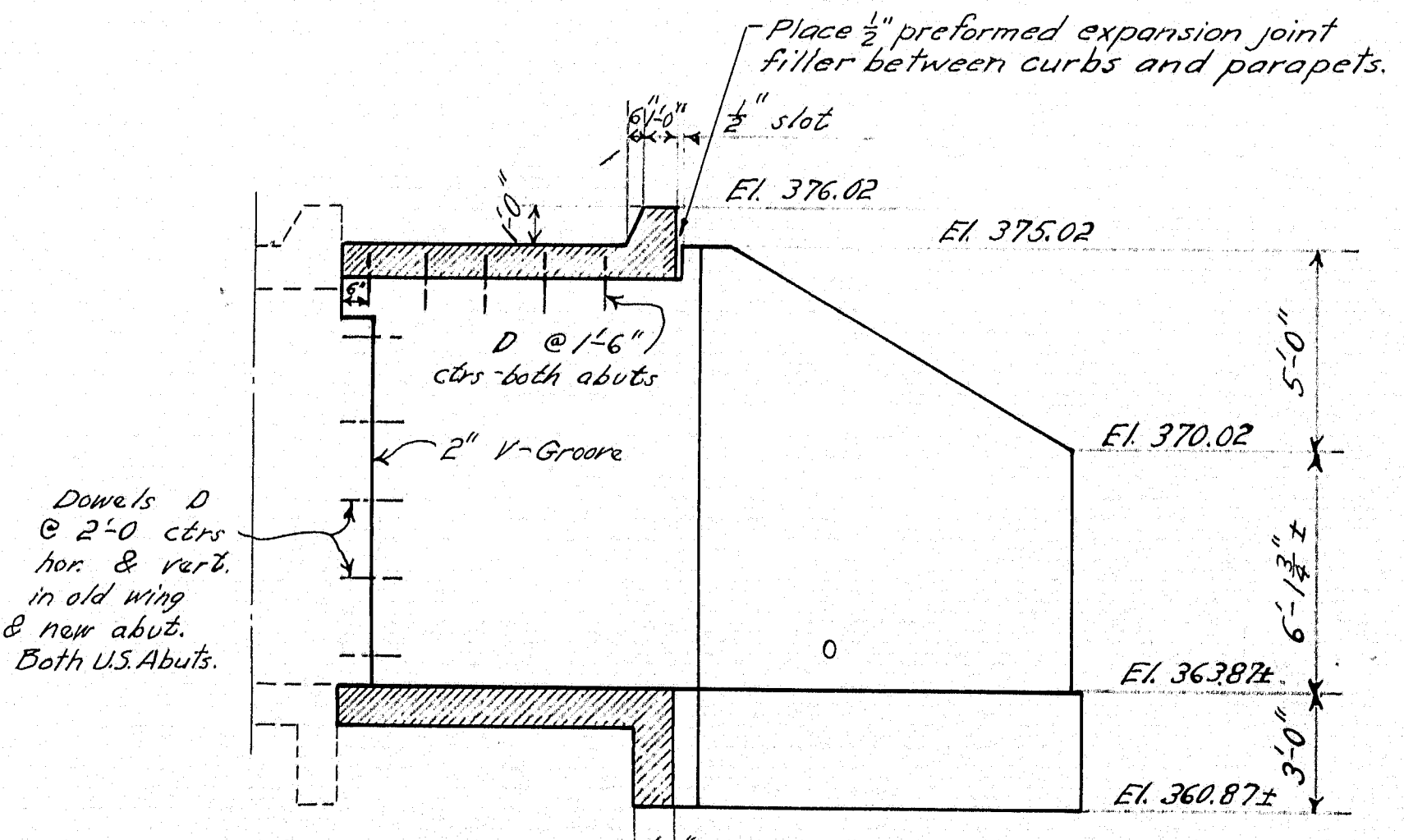


PLAN - U.S. ABUTS.

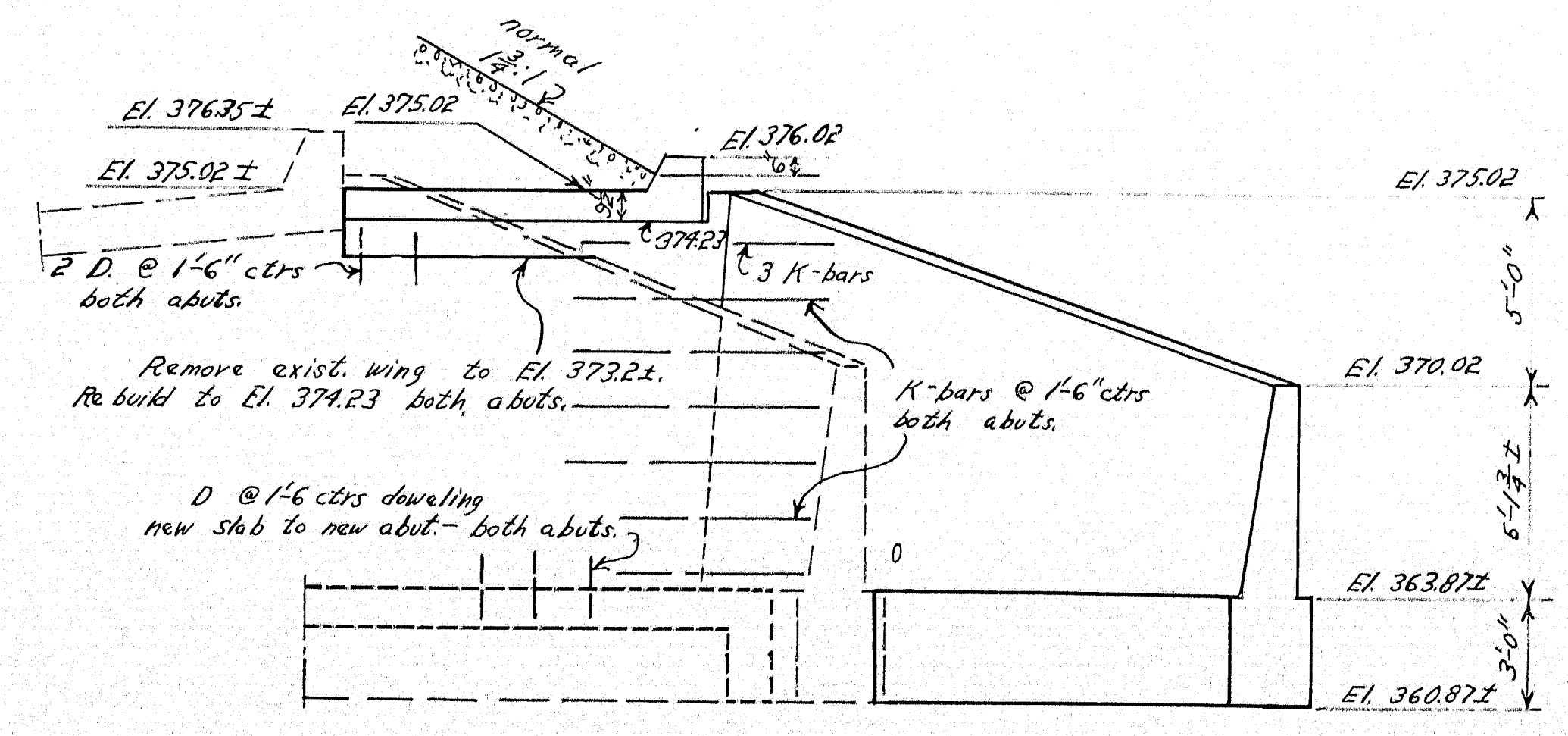


— END ELEVATION —



SECTION A-A

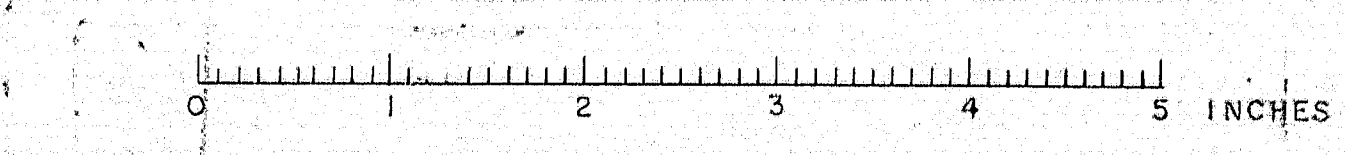
NOTE
Place K-bars at the junction of wings & breastwall @ 1/4" vertically and 6" from back form; also 6" below bridge seat @ 4" ctrs. horizontally. See Section G-G on Sheet 2 for detail of Stone Drains behind upstream wings.

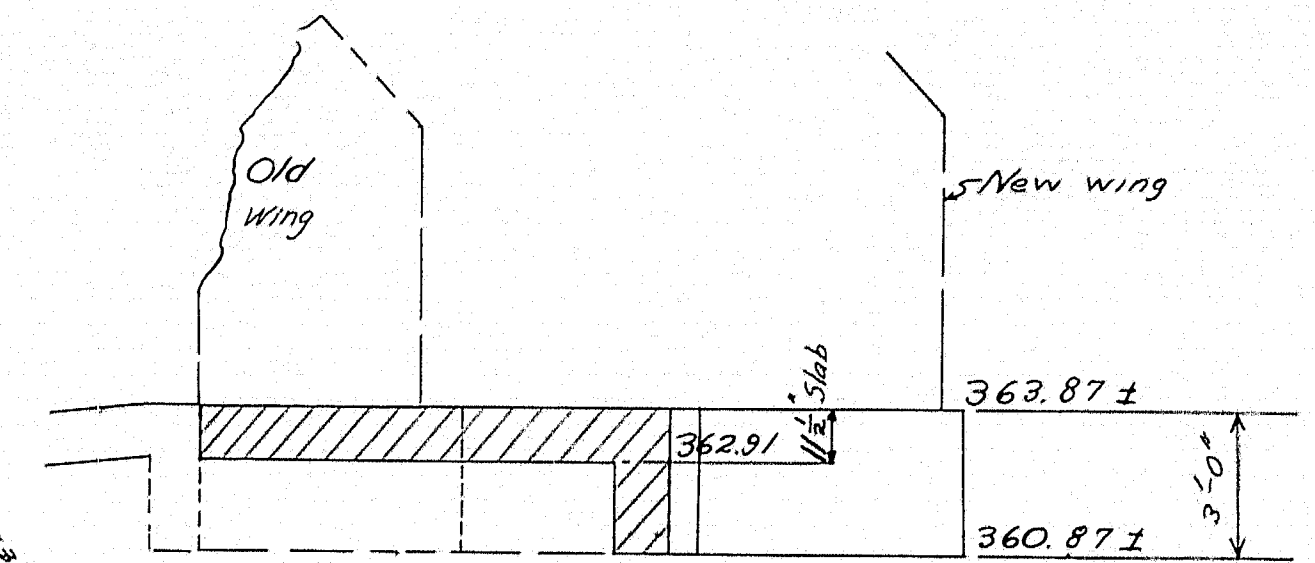


— REAR ELEVATION ABUT #1 —

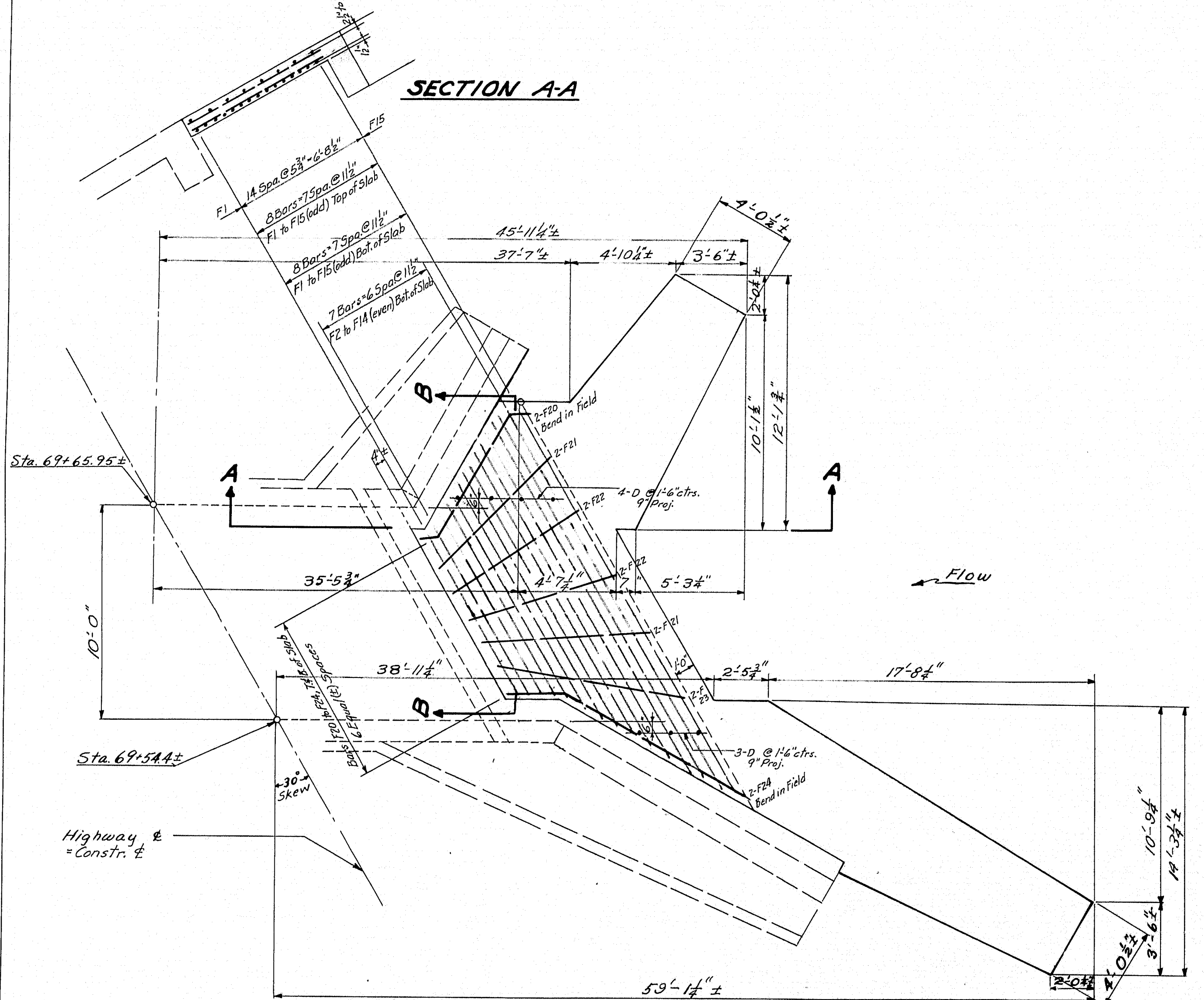
DESIGN — BUNKER	BRIDGE — 2303
TRACE — FLYNT	
CHECK — [Signature]	
STATE HIGHWAY COMMISSION BRIDGE DIVISION	
GAGNON BROOK BRIDGE	
IN THE TOWN OF FRENCHVILLE	
AROOSTOOK COUNTY	
PLAN U.S. ABUTS.	
SHEET 1 OF 4	AUGUSTA, MAINE MAY, 1954

61-92

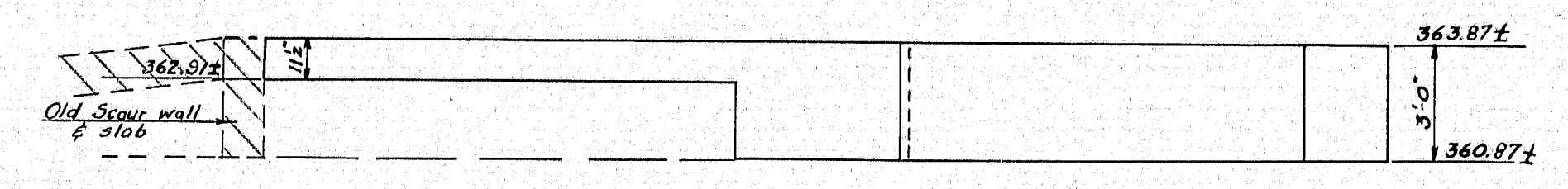




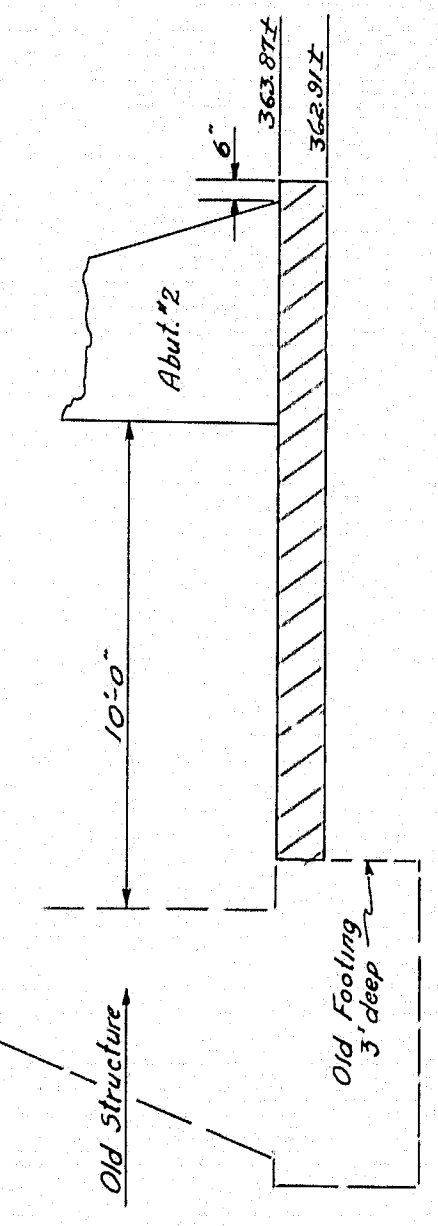
SECTION A-A



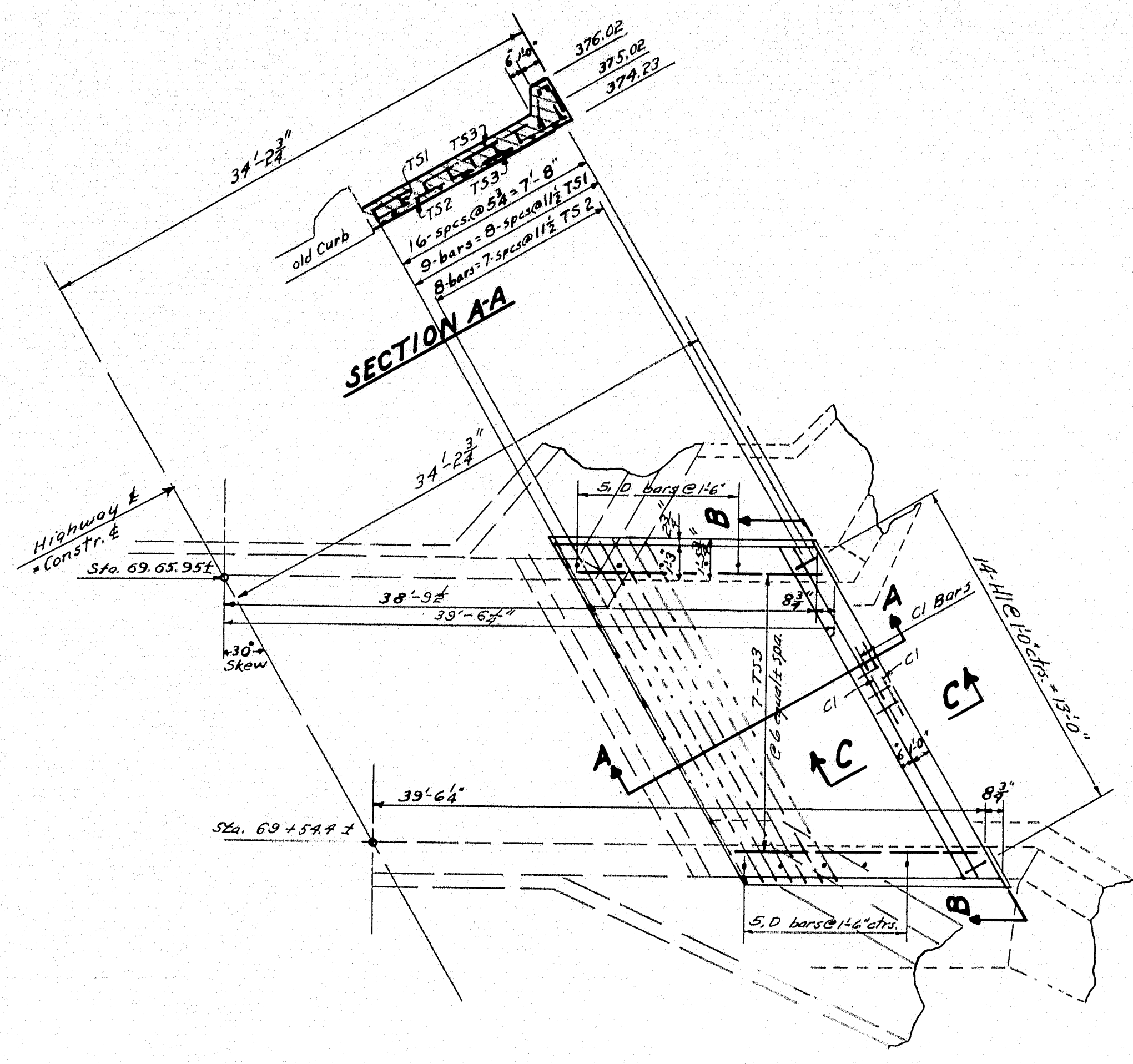
**Plan of Footings & Slab
Upstream Half**



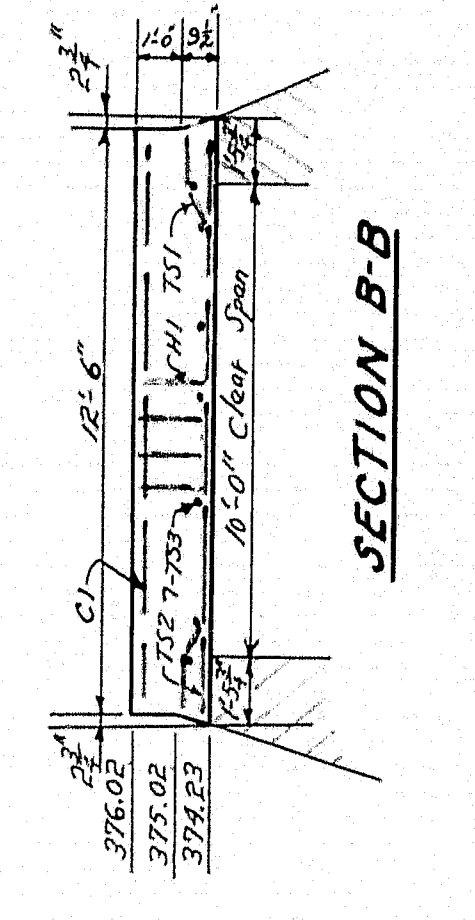
REAR VIEW OF FOOTINGS & SLAB



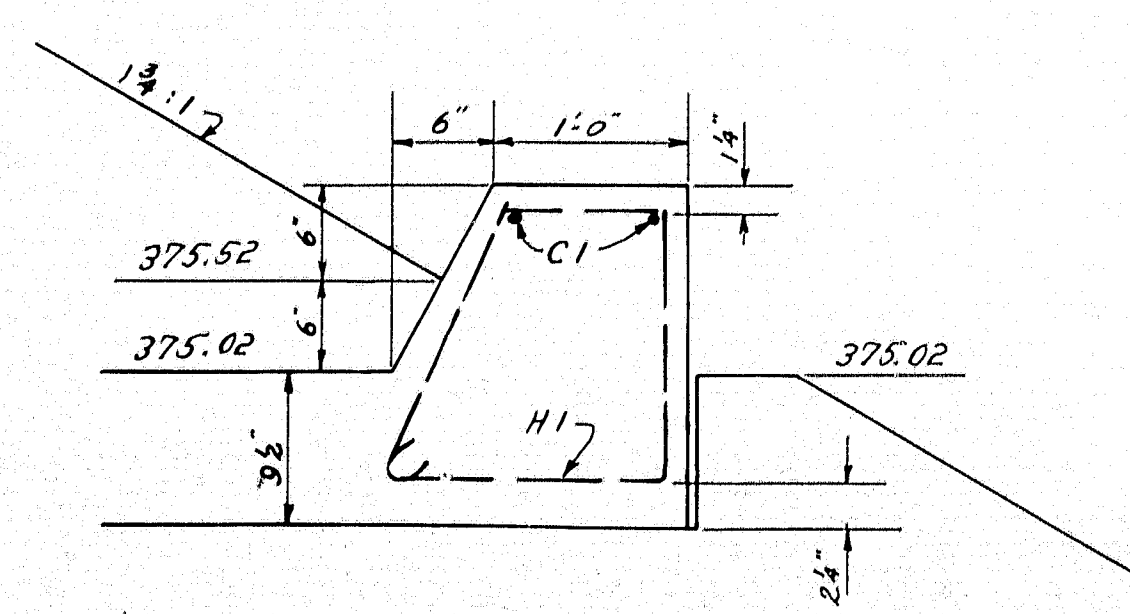
SECTION B-B



**PLAN VIEW TOP SLAB
UPSTREAM HALF**



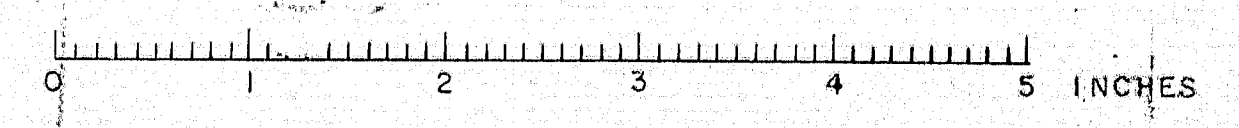
SECTION B-B

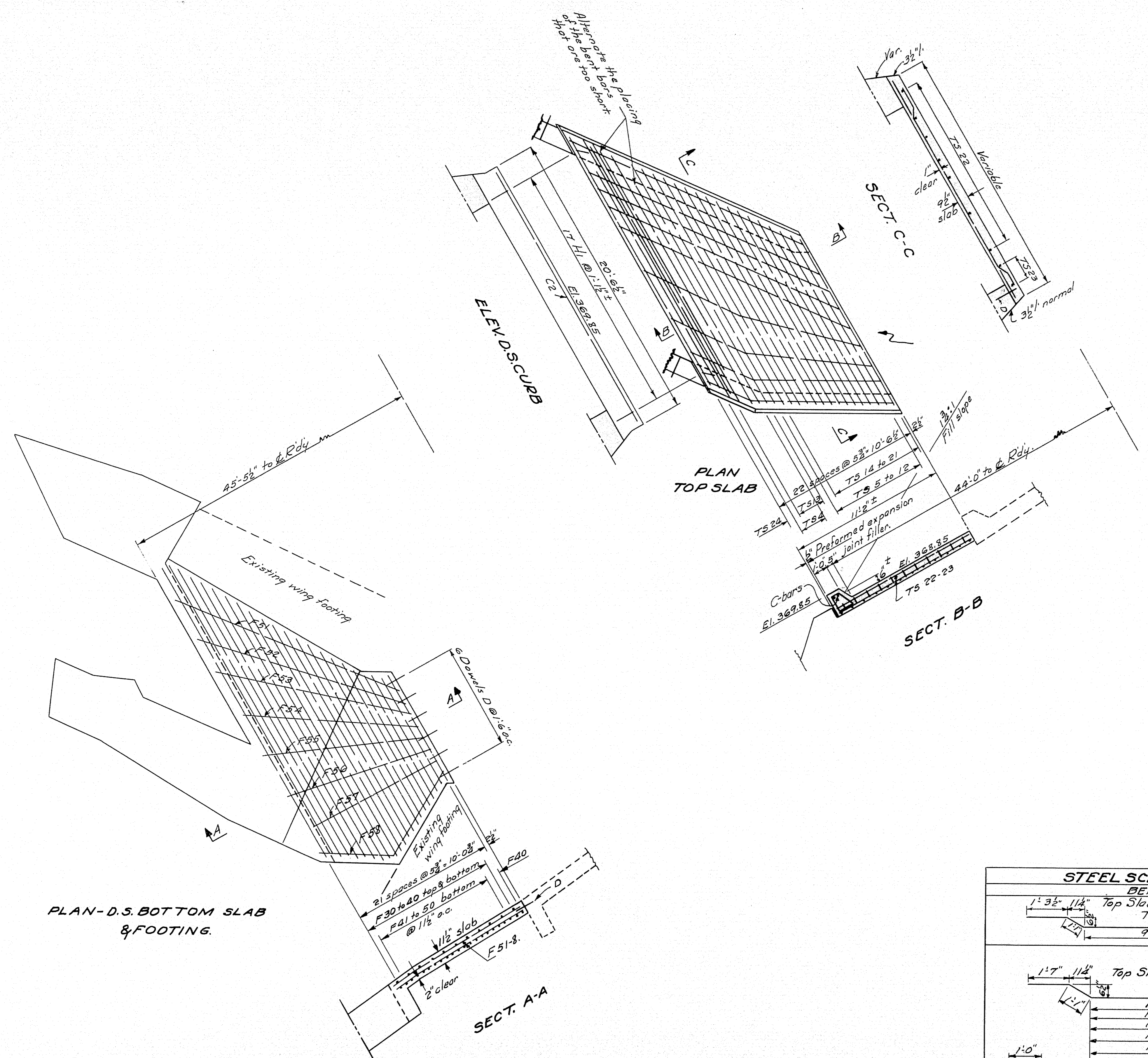


**CURB DETAIL
AT SECT. C-C**

DESIGN - BUNKER	BRIDGE - 2303
TRACE - FORTIER	STATE HIGHWAY COMMISSION
CHECK - [Signature]	BRIDGE DIVISION
GAGNON BROOK BRIDGE	
IN THE TOWN OF	
FRENCHVILLE	
AROSTOOK COUNTY	
U.S. FOOTINGS & SLABS	
SHEET 3 OF 4 AUGUSTA, MAINE APRIL 1954	

61-94





REINFORCING STEEL (ORIGINAL)

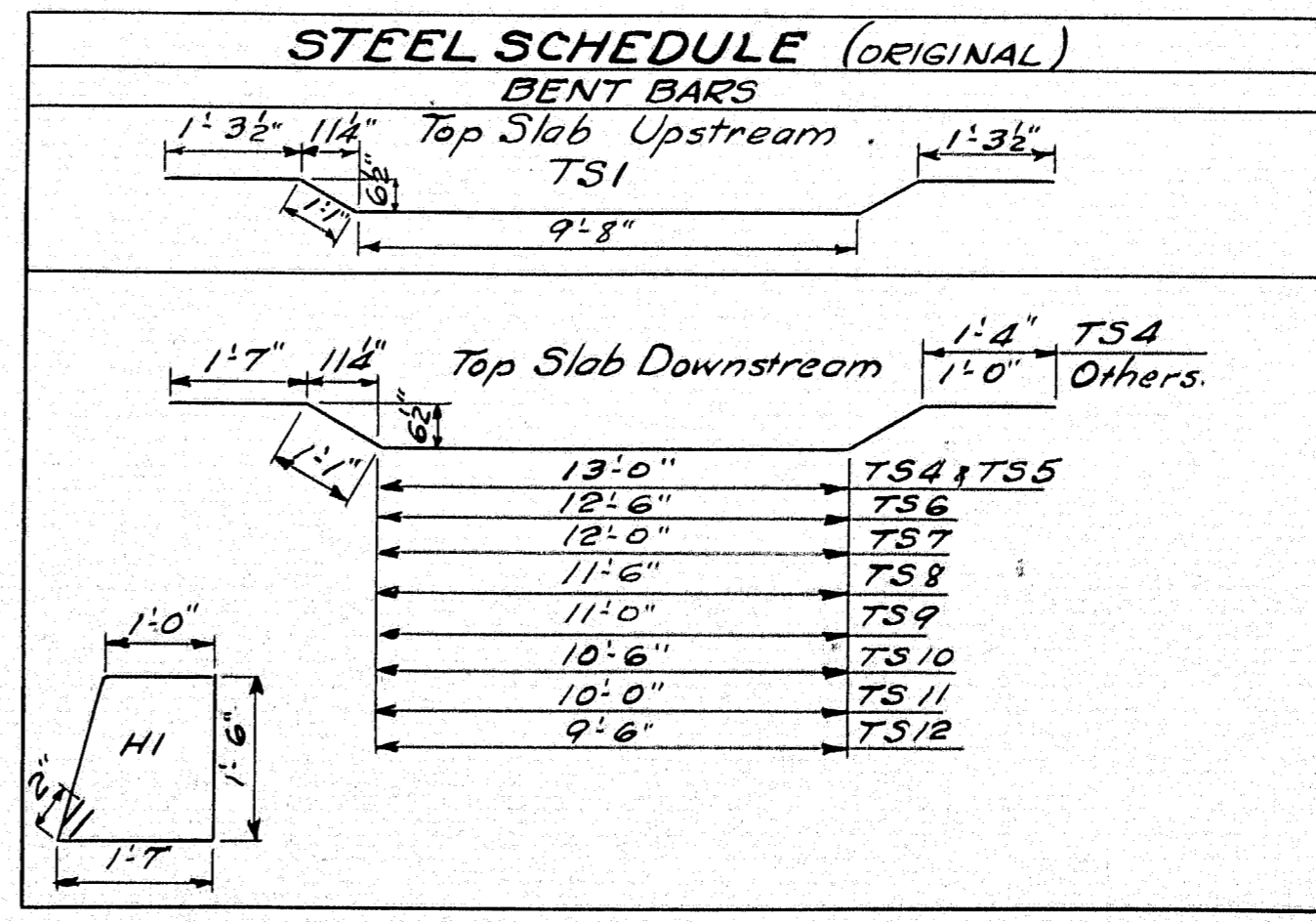
STRAIGHT BARS									
MARK	SIZE	NO.	LENGTH	LOCATION	MARK	SIZE	NO.	LENGTH	LOCATION
F1	#7	2	8'-0"	Bottom Slab U.S.	F37	#7	2	14'-0"	Bottom slab, D.S.
F2	"	1	8'-6"	"	F38	"	2	11'-9"	"
F3	"	2	9'-0"	"	F39	"	2	9'-9"	"
F4	"	1	9'-6"	"	F40	"	3	9'-6"	"
F5	"	2	10'-3"	"	F41	"	1	22'-0"	"
F6	"	1	11'-4"	"	F42	"	1	23'-3"	"
F7	"	2	12'-5"	"	F43	"	1	22'-0"	"
F8	"	1	13'-6"	"	F44	"	1	21'-0"	"
F9	"	2	14'-7"	"	F45	"	1	19'-6"	"
F10	"	1	15'-7"	"	F46	"	1	17'-3"	"
F11	"	2	16'-8"	"	F47	"	1	15'-0"	"
F12	"	1	17'-9"	"	F48	"	1	13'-0"	"
F13	"	2	18'-10"	"	F49	"	1	10'-9"	"
F14	"	1	19'-11"	"	F50	"	1	9'-3"	"
F15	"	2	21'-0"	"	F51	#5	2	17'-0"	"
F20	#5	2	8'-6"	"	F52	"	2	15'-6"	"
F21	"	4	8'-0"	"	F53	"	2	14'-0"	"
F22	"	4	7'-6"	"	F54	"	2	12'-3"	"
F23	"	2	9'-6"	"	F55	"	2	11'-3"	"
F24	"	2	13'-0"	"	F56	"	2	10'-3"	"
F30	#7	2	21'-6"	Bottom Sl. D.S.	F57	"	2	9'-6"	"
F31	"	2	23'-0"	"	F58	"	2	12'-0"	"
F32	"	2	22'-9"	"	D #6	90	1'-6"	Dowels	
F33	"	2	21'-6"	"	K #6	36	8'-0"	Breastwall-wings	
F34	"	2	20'-6"	"	C1 #4	2	14'-0"	Curb U.S.	
F35	"	2	18'-6"	"	C2 #4	2	18'-0"	" D.S.	
F36	"	2	16'-3"	"	TS2	#7	8	14'-1"	Top slab, U.S.
TS13	"	3	17'-9"	Top slab D.S.	TS3	#5	7	9'-0"	"
TS14	"	1	17'-5"	"	B1 #6	7	6'-0"	Breastwall, D.S.	
TS15	"	1	16'-11"	"	B2 #4	4	9'-4"	"	
TS16	"	1	16'-5"	"					
TS17	"	1	15'-11"	"					
TS18	"	1	15'-5"	"					
TS19	"	1	14'-11"	"					
TS20	"	1	14'-5"	"					
TS21	"	1	13'-11"	"					

BENT BARS									
MARK	SIZE	NO.	LENGTH	LOCATION	MARK	SIZE	NO.	LENGTH	LOCATION
TS1	#7	9	14'-5"	Top slab, U.S.	TS11	#7	1	14'-9"	Top slab, D.S.
TS4	"	3	12'-1"	Top slab, D.S.	TS12	#7	1	14'-3"	"
TS5	"	1	17'-9"	"	H1	#4	31	5'-11"	Curbs, DS-D.S.
TS6	"	1	17'-3"	"					
TS7	"	1	16'-9"	"					
TS8	"	1	16'-3"	"					
TS9	"	1	15'-9"	"					
TS10	"	1	15'-3"	"					

ADDITIONAL REINF. STEEL

STRAIGHT BARS					
Mark	Size	No.	Length	Location	
B2	#4	4	9'-4"	Ah 2 D.S. Jacket	
B3	#5	5	18'-0"	"	
C3	#4	2	3'-0"	Splice for C2-D.S. Curb	
TS22	#5	7	17'-6"	D.S. Top slab - dist. bars *	
TS23	#5	2	13'-6"	"	
TS24	#7	1	20'-3"	"	
TS25	#7	4	3'-0"	Splice for TS 13-14	
TS26	#7	4	2'-0"	" TS 15-18	

D B1 in original schedule not needed, cut in field to make additional dowels.
 * TS 22 were shown on original plans but not shown in schedule.
 Tack weld splice bars



DESIGN - BUNKER, ALLEN
 TRACE - ALLEN
 CHECK - Blake

BRIDGE 23 03

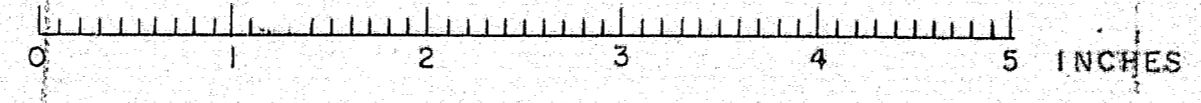
STATE HIGHWAY COMMISSION
 BRIDGE DIVISION

GAGNON BROOK BRIDGE
 IN THE TOWN OF
FRENCHVILLE
 AROOSTOOK COUNTY
 D.S. FOOTINGS & SLABS

Revised 8/54

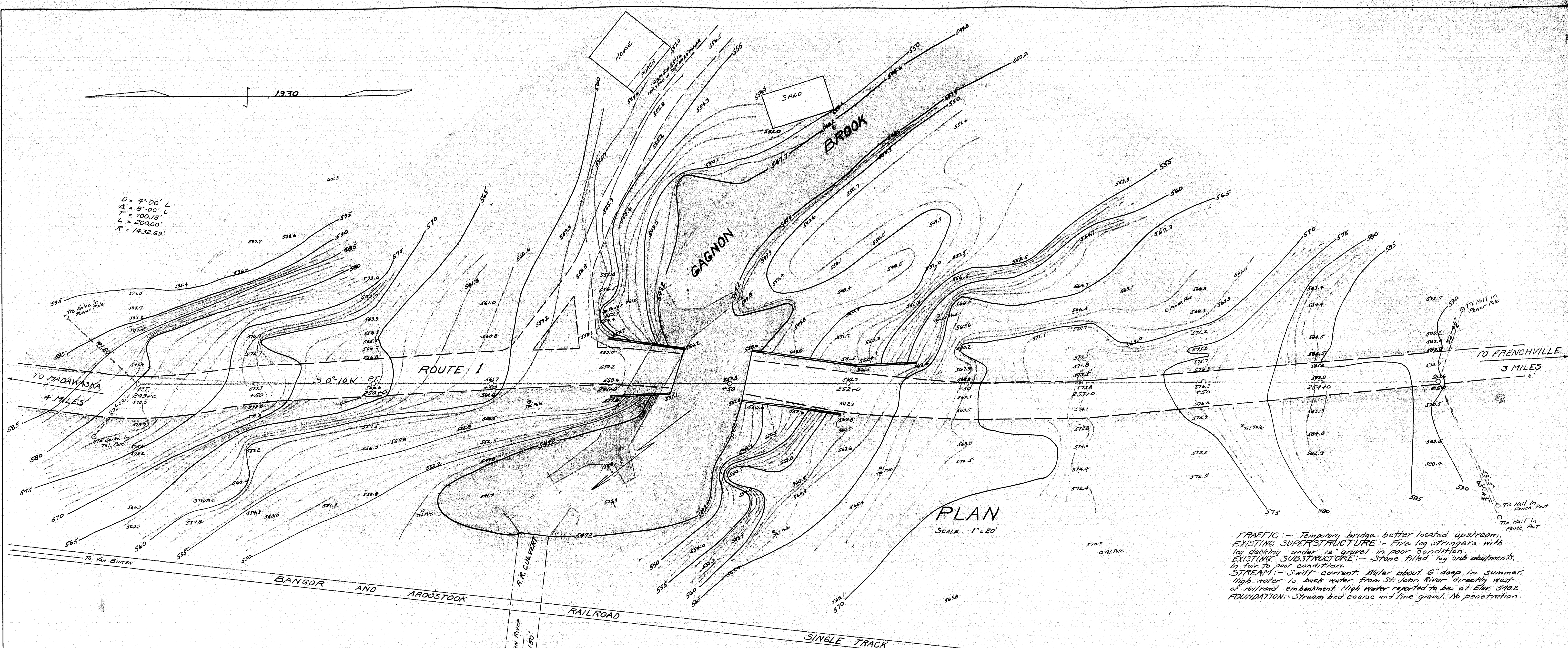
SHEET 4 OF 4 AUGUSTA MAINE AUG. 1954

61-95



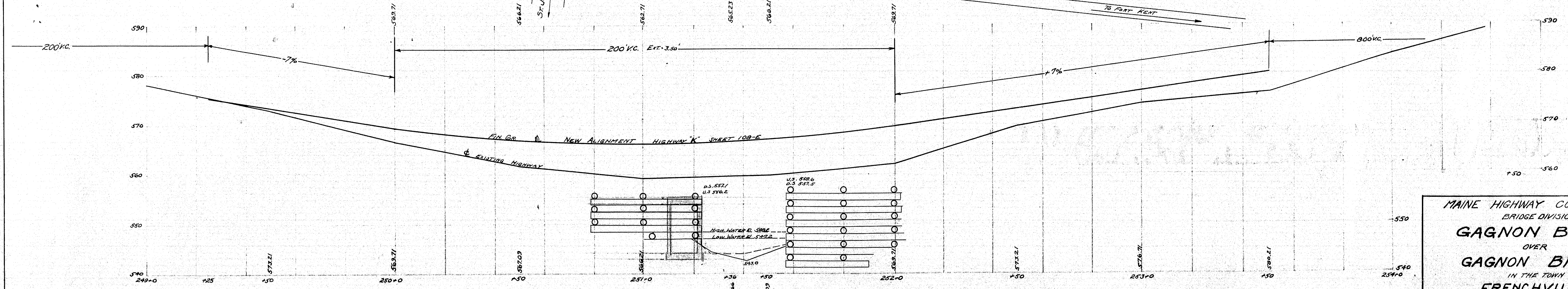
1930

$D = 4.00' L$
 $d = 9.00' L$
 $T = 100.00'$
 $L = 200.00'$
 $R = 1432.63'$



PLAN
SCALE 1"=20'

TRAFFIC: - Temporary bridge better located upstream.
 EXISTING SUPERSTRUCTURE: - Five log stringers with log blocking under 2" girders in poor condition.
 EXISTING SUBSTRUCTURE: - Stone filled log crib abutments in fair to poor condition.
 STREAM: - Swift current water about 6" deep in summer. High water is back water from St. John River directly west of railroad embankment. High water reported to be at Elev. 570.2
 FOUNDATION: - Stream bed coarse and fine gravel. No penetration.

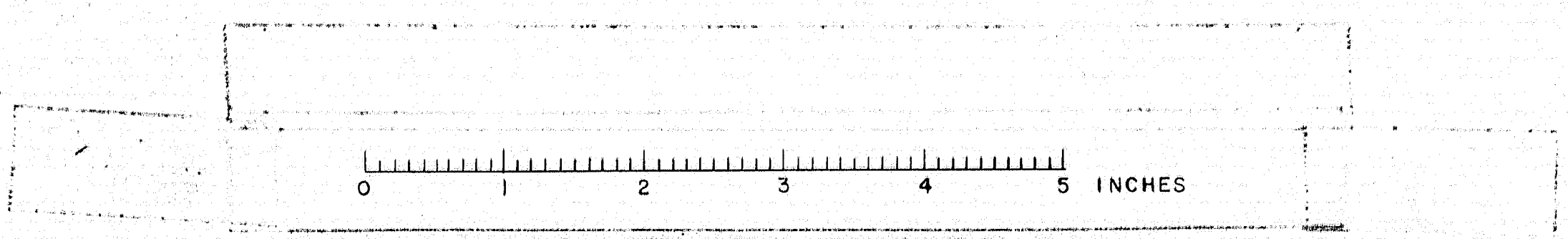


PROFILE
HOR. 1"=20'
VERT. 1"=10'

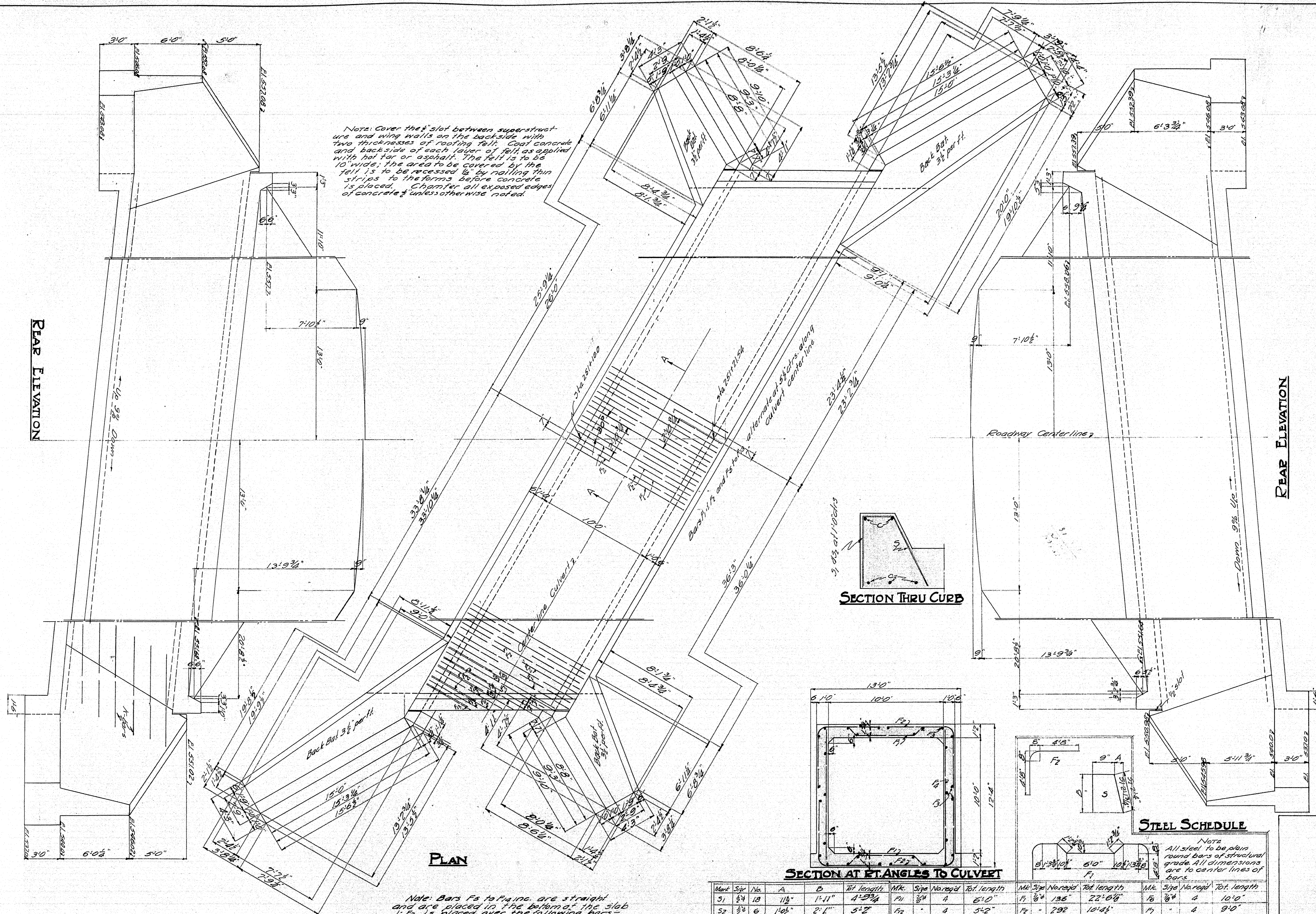
MAINE HIGHWAY COMMISSION
 BRIDGE DIVISION
GAGNON BRIDGE
 OVER
GAGNON BROOK
 IN THE TOWN OF
FRENCHVILLE
 AROOSTOOK COUNTY
 SURVEY PLAN
 SHEET 1 of 2 AUGUSTA, ME. JUNE 10, 1930

SURVEYED BY DECEMBER 1930
 PLOTTED BY ROBINSON 6/8/30
 CHECKED BY ROBINSON 6/9/30

11-196



REAR ELEVATION



REAR ELEVATION

SECTION AA

PLAN

Note: Bars F₅ to F₁₀ inc. are straight and are placed in the bottom of the slab. F₁ is placed over the following bars: F₂, F₃, F₄, F₆, F₇, F₈, F₉ in the top slab, and in the bottom slab the F₂s are placed under the same bars.

5/16 DS. and half US. curb
5/8 half US. curb

SECTION AT RT. ANGLES TO CULVERT

Mark	Size	No.	A	B	Fit length
S1	3/4"	10	11 1/2"	14 1/2"	4'-9 3/4"
S2	3/8"	6	1 1/2"	2'-1"	5'-2"
B	3/8"	8			15'-0"

Mark	Size	No.	Fit length
F1	3/4"	4	6'-0"
F2	"	4	5'-2"
F3	"	4	4'-4"
C	1/2"	10	13'-7 1/2"
X	3/8"	28	8'-0"

Mark	Size	No.	Fit length
F4	3/4"	4	22'-6 1/2"
F5	"	4	10'-4 1/2"
F6	"	4	37'-6"
F7	"	4	11'-4"
F8	"	4	18'-9"

Mark	Size	No.	Fit length
F9	3/4"	4	10'-0"
F10	"	4	8'-3"
F11	"	4	7'-6"
F12	"	4	6'-9"

STEEL SCHEDULE

Note: All steel to be plain round bars of structural grade. All dimensions are to center lines of bars.

Maine Highway Commission
Bridge Division

GAGNON BRIDGE
Over
GAGNON BROOK
In the town of
FRENCHVILLE
ARCOSTOON CO
BRIDGE DETAILS

Sheet 2 of 2 Aug 1, 1930

11-197

0 1 2 3 4 5 INCHES