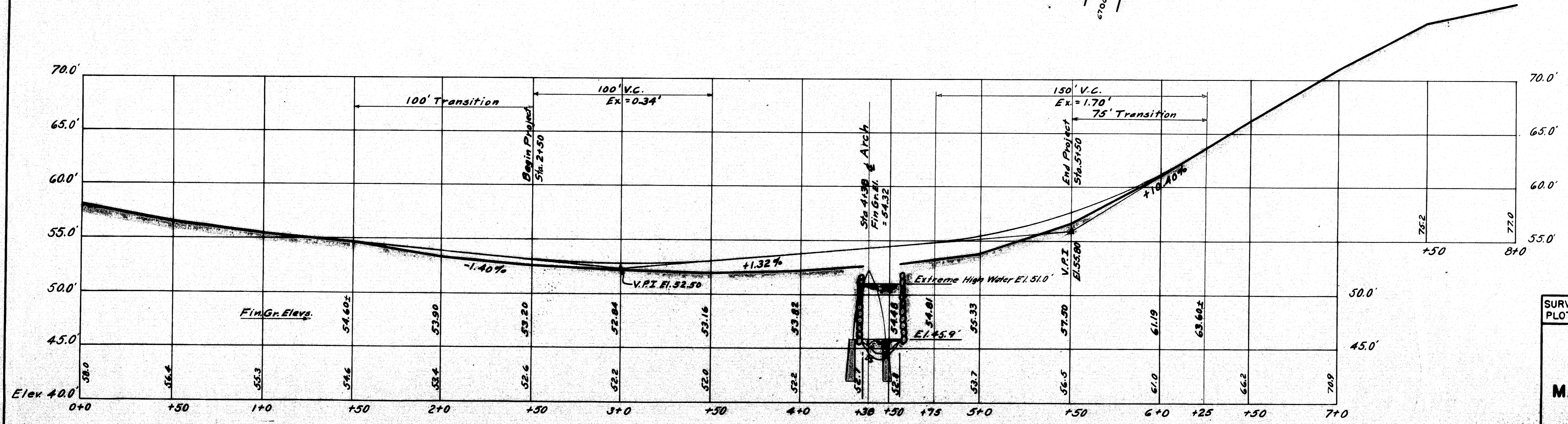


PLAN
Scale: 1" = 30'

Note:
 Existing Superstructure.
 3" transverse plank on 8"x10" sized oak stringers.
 Existing Substructure.
 Abutment #1. Small flat and round stones laid dry.
 Abutment #2. Small flat stones, recently relaid roughly, to 4' on 1' batter.
 Stream.
 Extreme high water Elev. 51.0'
 Foundation.
 Soundings #1. U.S. corner Abut. #2. 3.5' to refusal.
 #2. D.S. corner Abut. #2. 8.0' to refusal.
 #3. U.S. corner Abut. #1. 5.0' to refusal.
 #4. D.S. corner Abut. #1. 3.5' to refusal.
 All soundings through sandy material and clay to refusal. Probably ledge.
 Approaches.
 Narrow surface treated gravel.

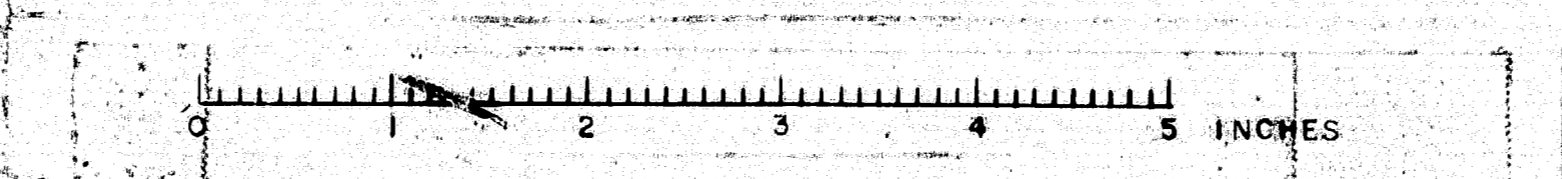


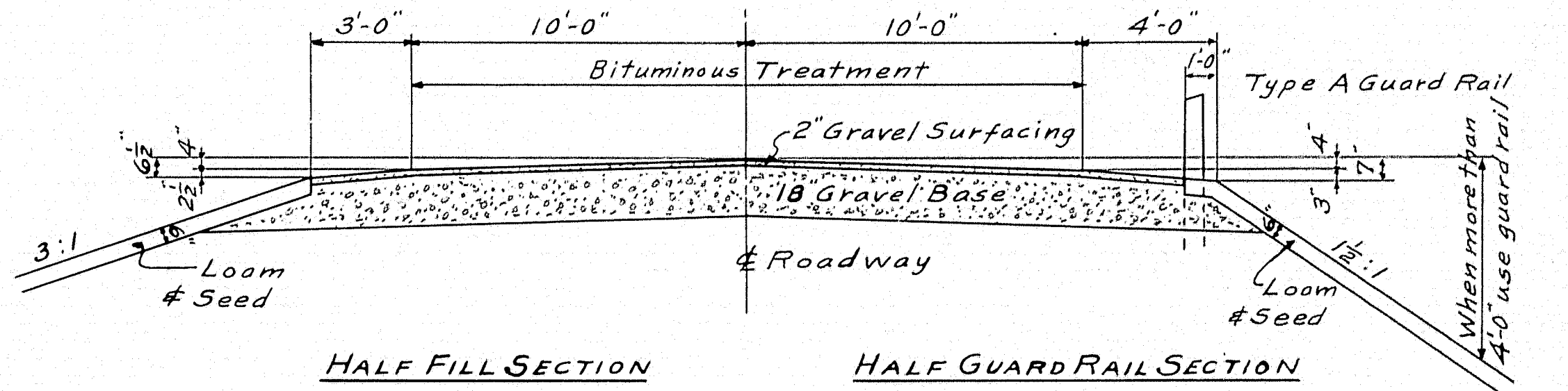
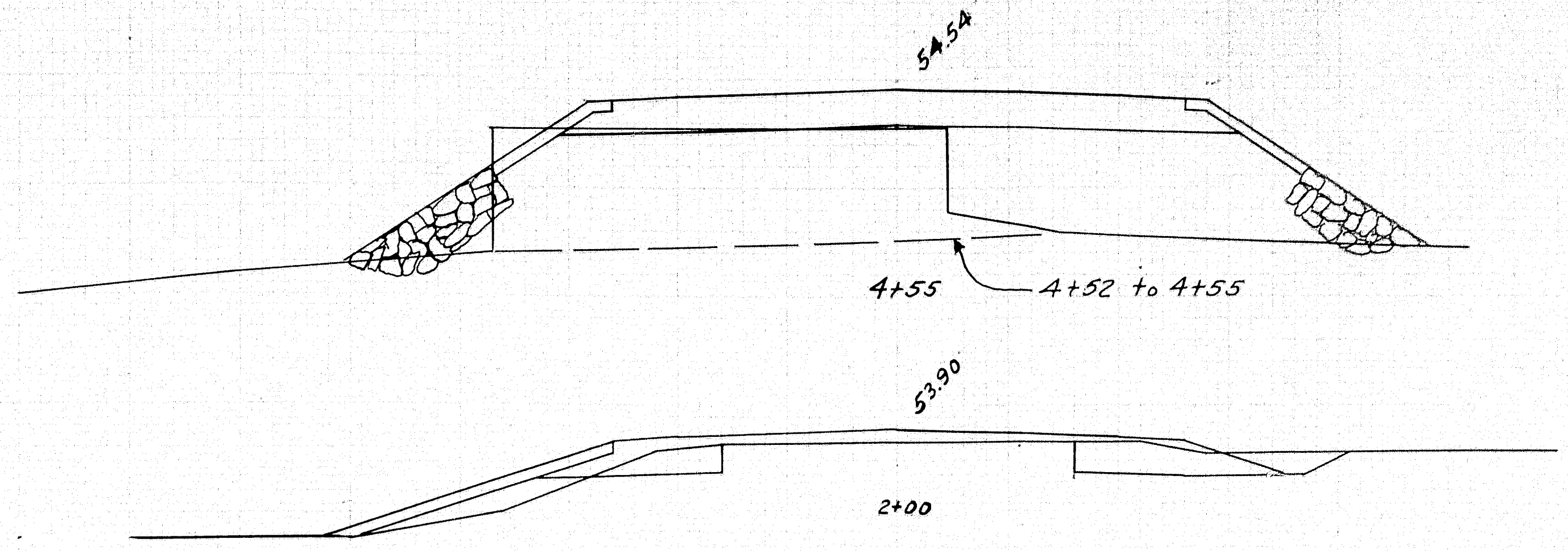
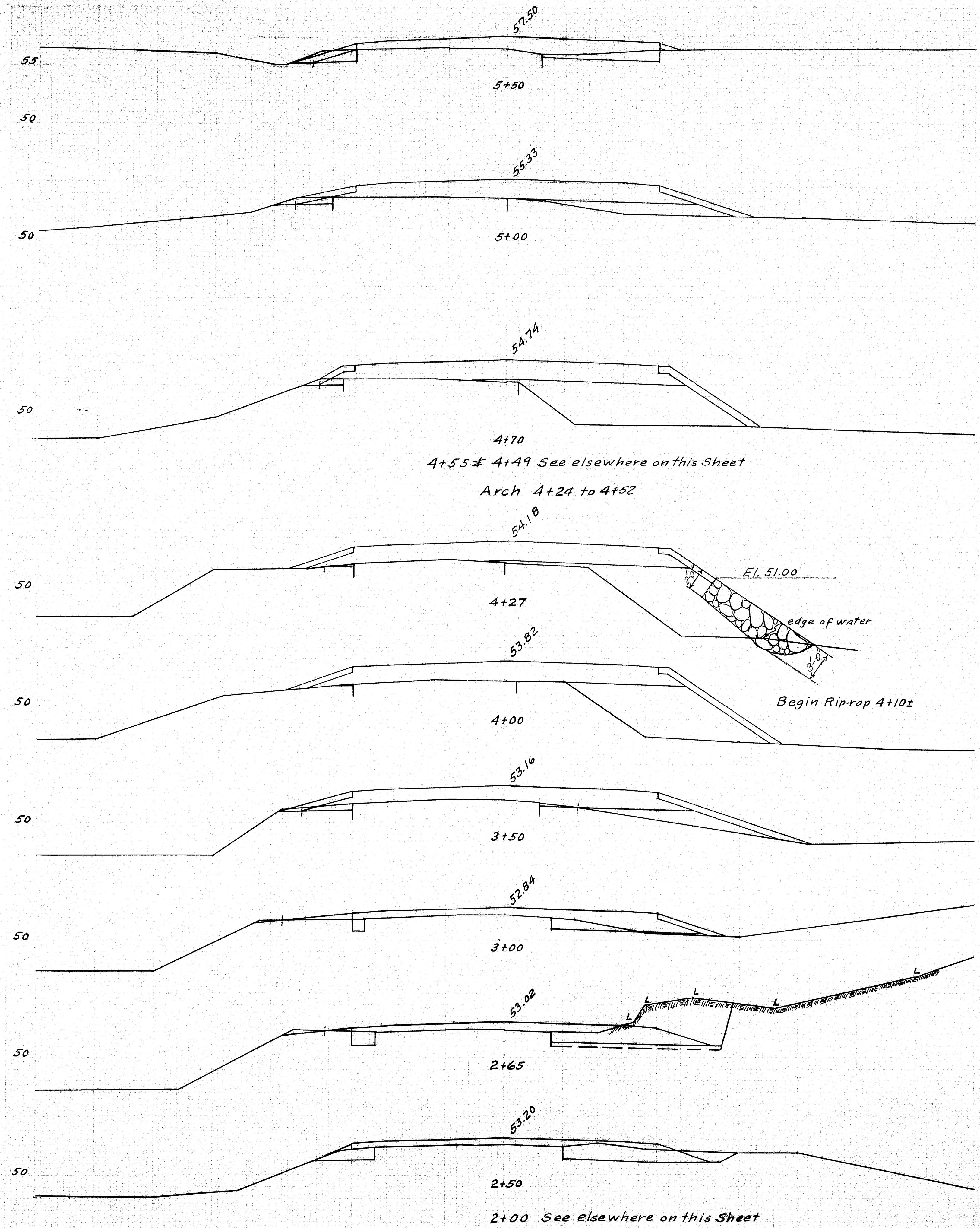
PROFILE
Scale: Horz: 1" = 30' Vert: 1" = 5'

SURVEY - BLAKE
 PLOT & TRACED - MCDUGAL
 BRIDGE - 5574
 STATE HIGHWAY COMMISSION
 BRIDGE DIVISION
BICKFORD BRIDGE
 OVER
MAPLE MEADOW STREAM
 IN THE TOWN OF
SEARSMONT
WALDO COUNTY
 SURVEY

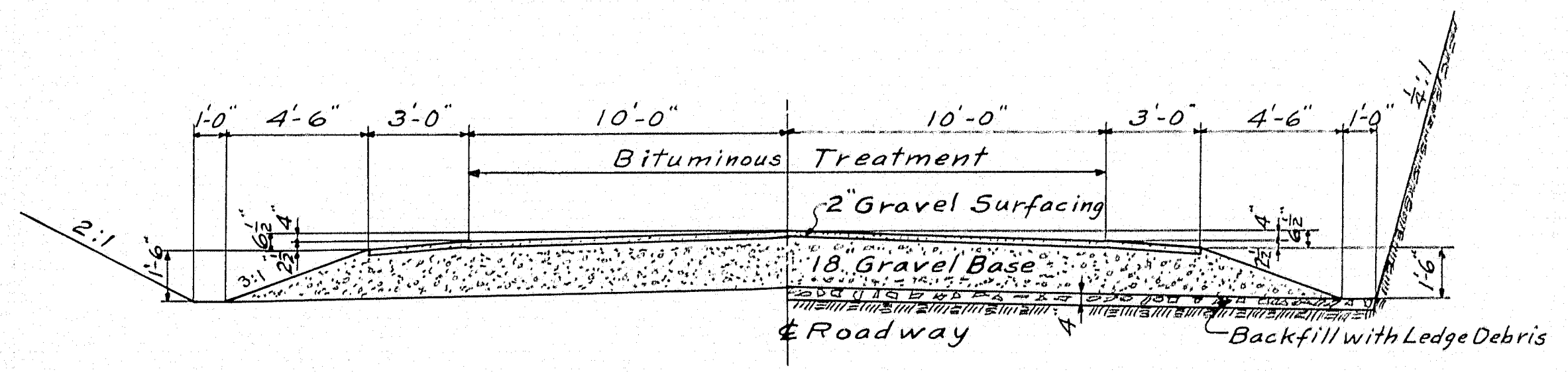
SHEET 7 OF 3 AUGUSTA, MAINE JAN. 1957

55-101





TYPICAL ROADWAY SECTION

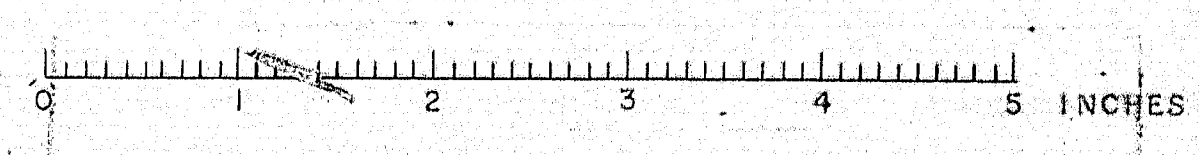


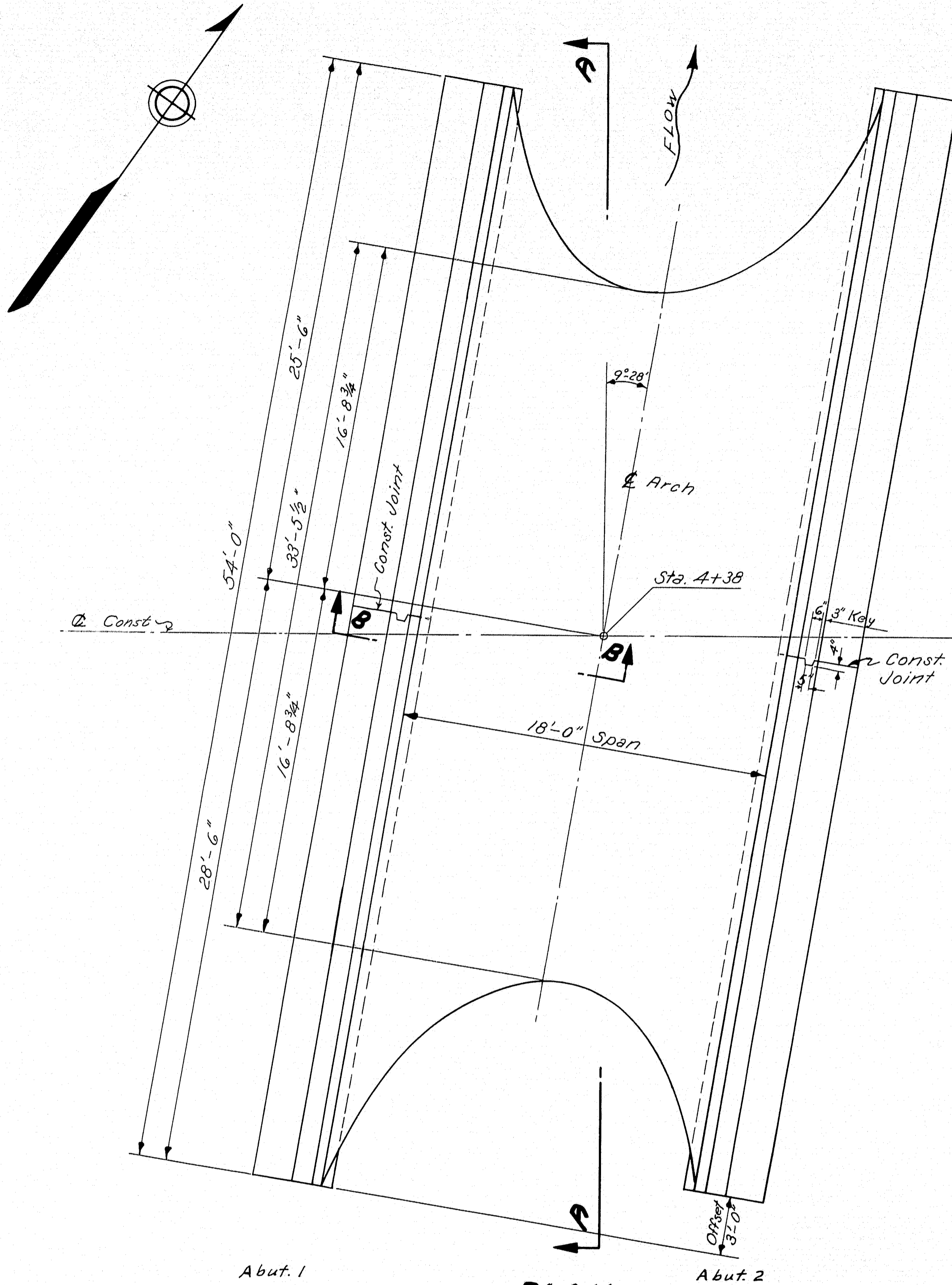
TYPICAL ROADWAY SECTION

Note- Do not excavate for gravel base where existing material is suitable.

PLOT - WHITE	BRIDGE - 5547
TRACE - FLYNT	
CHECK - <i>[Signature]</i>	
STATE HIGHWAY COMMISSION BRIDGE DIVISION	
BICKFORD BRIDGE OVER MAPLE MEADOW STREAM IN THE TOWN OF SEARSMONT WALDO COUNTY CROSS SECTIONS	
SHEET 2 OF 3	AUGUSTA, MAINE MAY, 1953

55-102





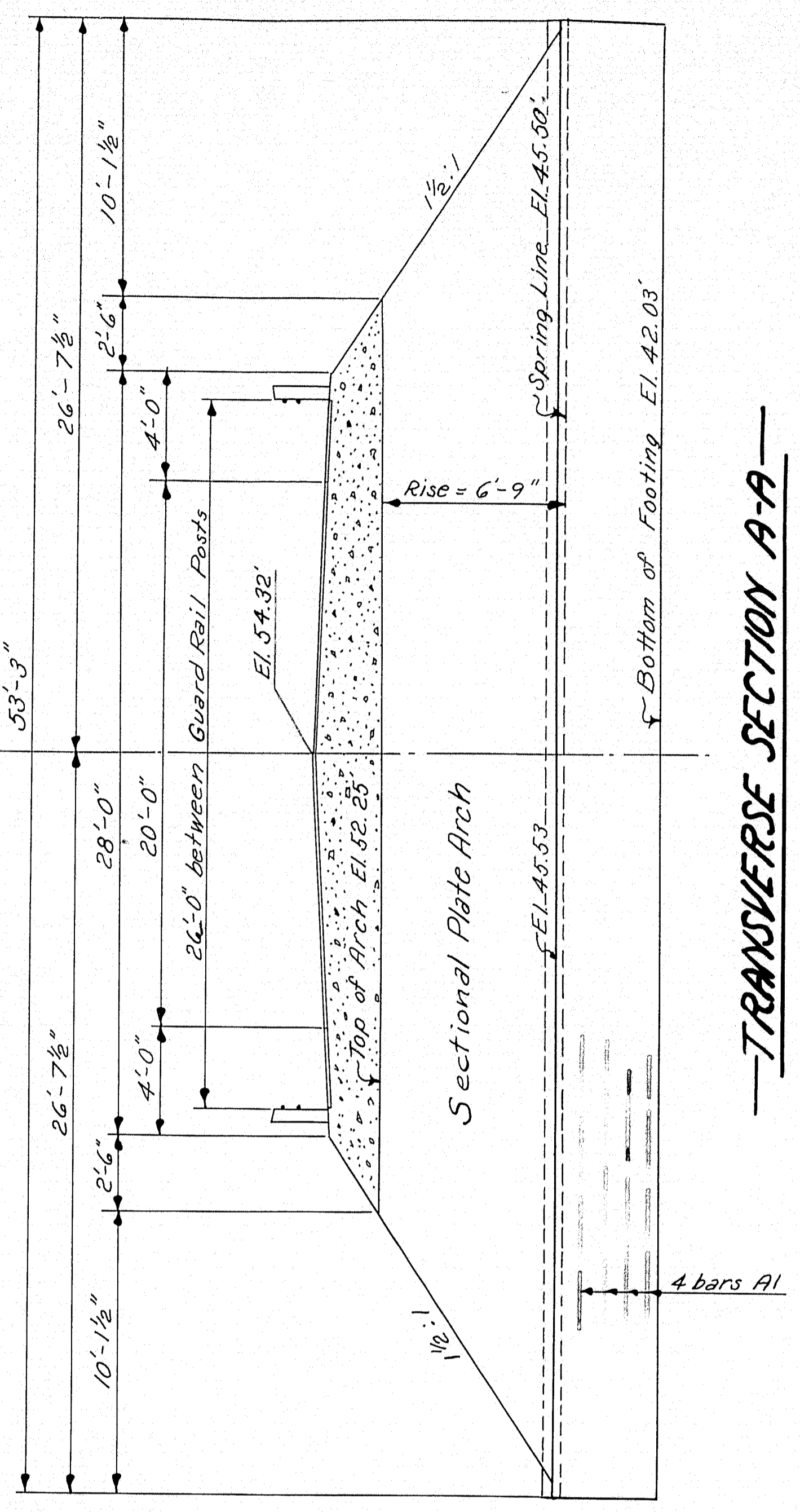
PLAN

Construction Joint at center of each Abutment.
Turn Abutment 1 thru 180° for dimensions of Abutment 2

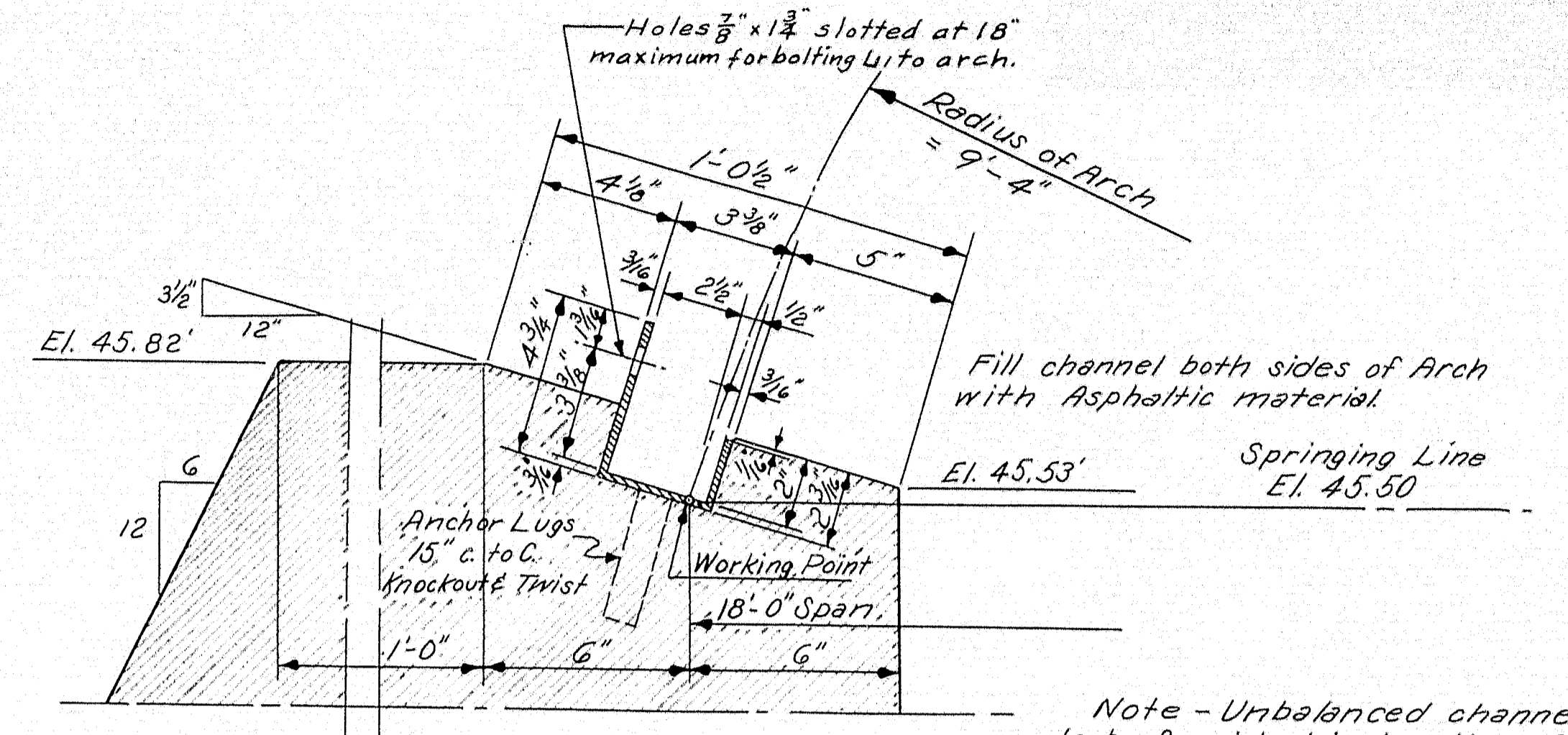
MATERIAL REQUIRED

One Sectional plate Arch, with a minimum plate thickness of No. 7 gage, including bolts and unbalanced channels. (Span and rise of arch may be varied slightly if approved by the Engineer. If such change is made, the Engineer shall be given the information for any dimensional changes involved.)
32-bars reinforcing steel 3/8" x 26'-6" - A1

Payment for furnishing and erection of the sectional plate arch will be made at the contract unit price per linear foot. The length to be paid for shall be the average of the springing line lengths.



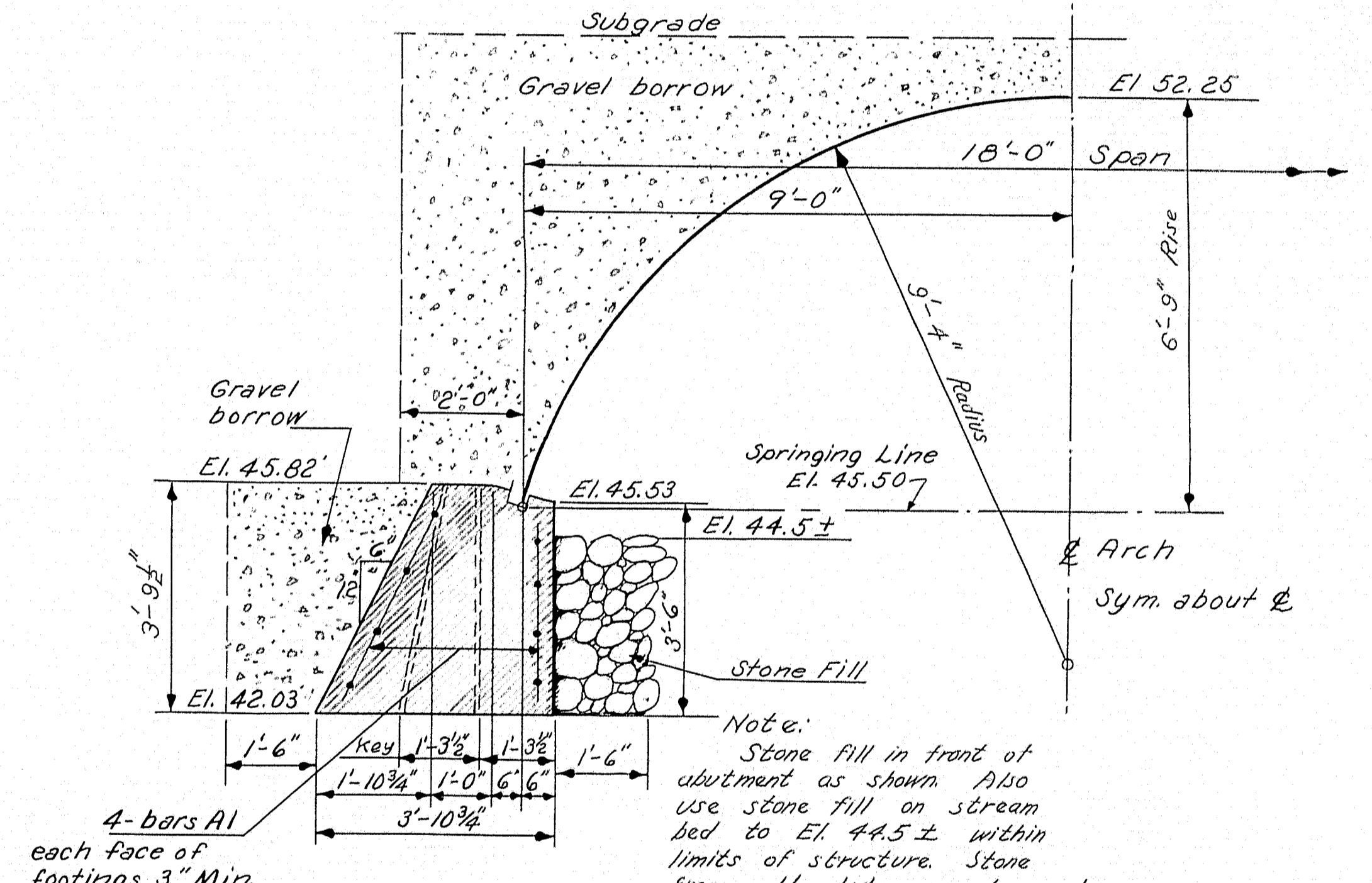
TRANSVERSE SECTION A-A



DETAIL AT UNBALANCED CHANNEL

Note - Unbalanced channel to be furnished in lengths of 6 and 8 feet to make up 54' for each abutment.

Other types of anchor lugs than those shown may be furnished if satisfactory to the Engineer.
All channels to be hot dip galvanized after fabrication.



SECTION B-B

4-bars A1 each face of footings. 3" Min. cover. Support on form ties.

Note: Stone fill in front of abutment as shown. Also use stone fill on stream bed to El. 44.5 ± within limits of structure. Stone from old abuts. may be used.

CONCRETE CLASSIFICATIONS
Footings Class B

Specifications: A.A.S.H.O. Standard Specifications for Highway Bridges - 1953 Loading 1415-44

DESIGN - WHITE	BRIDGE - 5574
TRACE - MCDUGAL	
CHECK - C.B. BROWN	
STATE HIGHWAY COMMISSION BRIDGE DIVISION	
BICKFORD BRIDGE OVER MAPLE MEADOW STREAM IN THE TOWN OF SEARSMONT WALDO COUNTY SECTIONAL PLATE ARCH	
SHEET 3 OF 3 AUGUSTA, MAINE MAY 1953	

