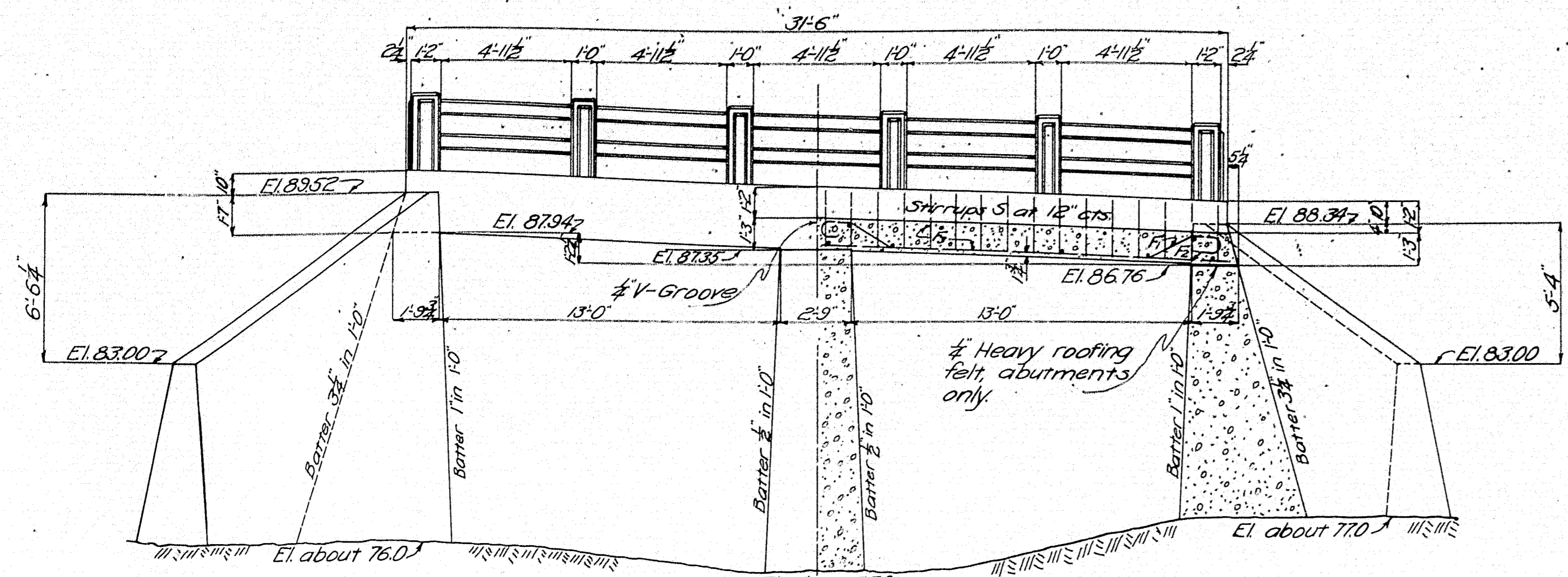


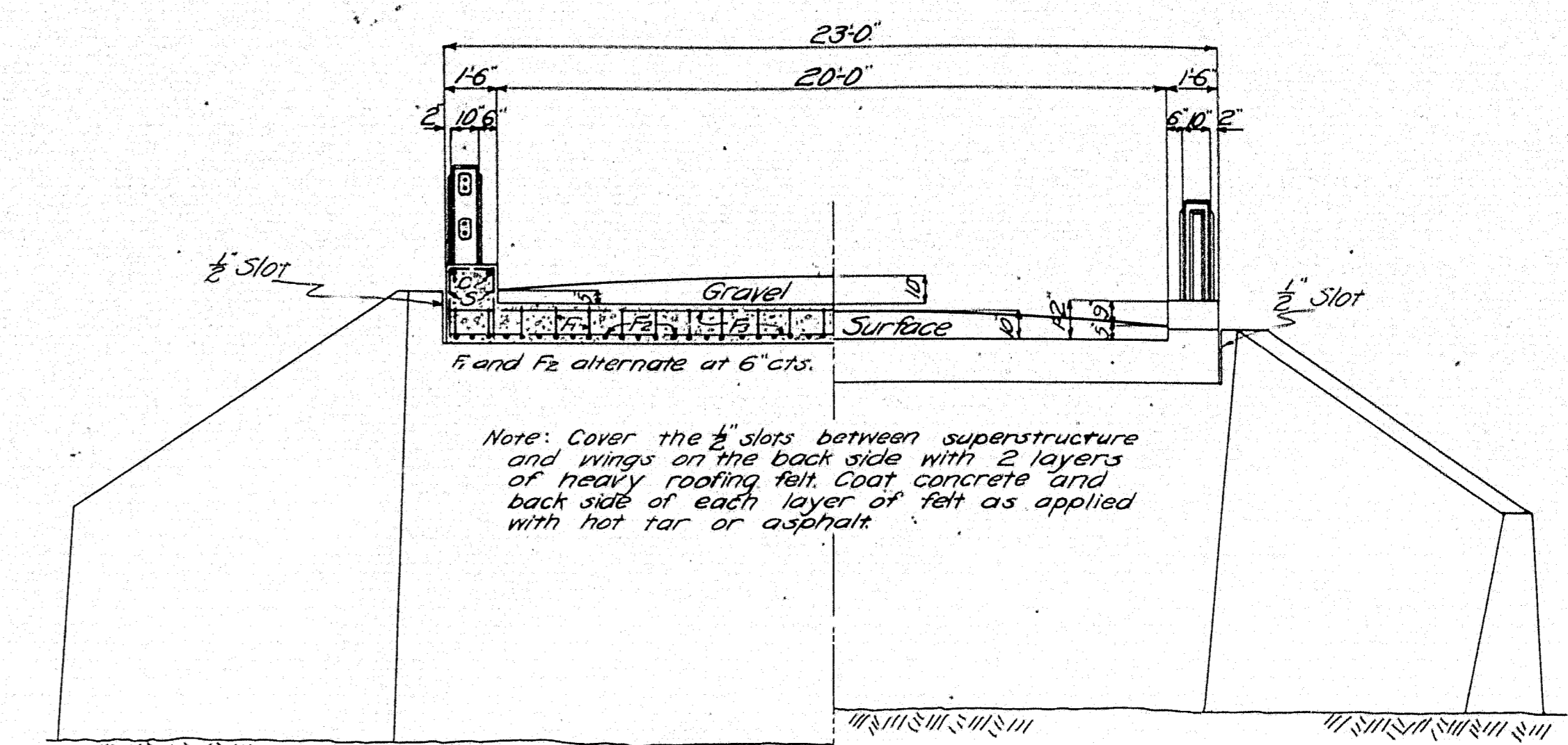
PROFILE  
 Scale H-1"=30'  
 V-1"=5'  
 Drainage Area 15 sq. mi.

MAINE HIGHWAY COMMISSION  
 BRIDGE DIVISION  
 SAWYER BRIDGE  
 OVER  
 FALLS BROOK  
 IN THE TOWN OF  
 INDUSTRY, FRANKLIN CO.  
 SHEET 1 OF FEB. 4, 1925

Surveyed by H.L.D.  
 Plotted by L.J.B.  
 Traced by L.J.B.



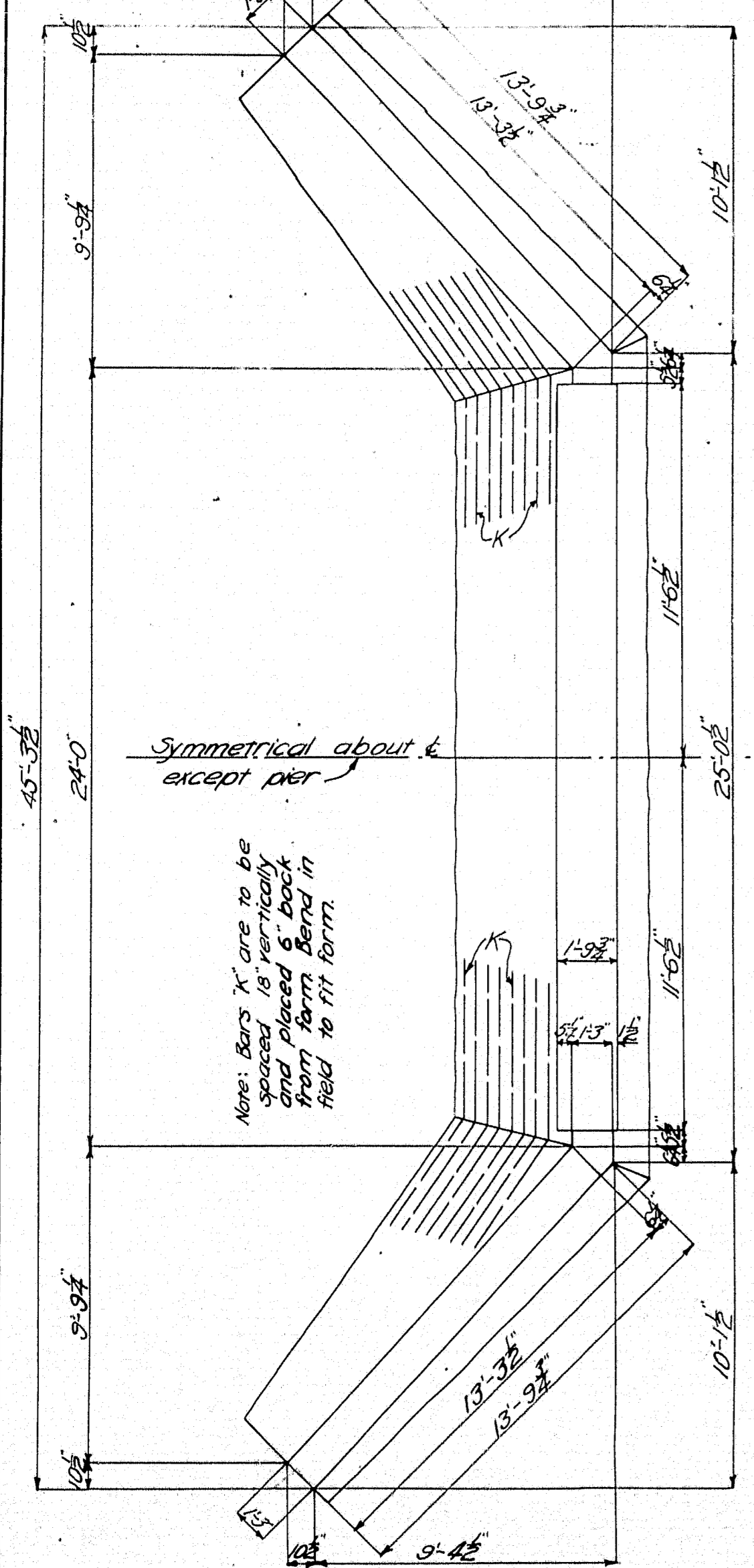
HALF DOWNSTREAM ELEVATION HALF LONGITUDINAL SECTION



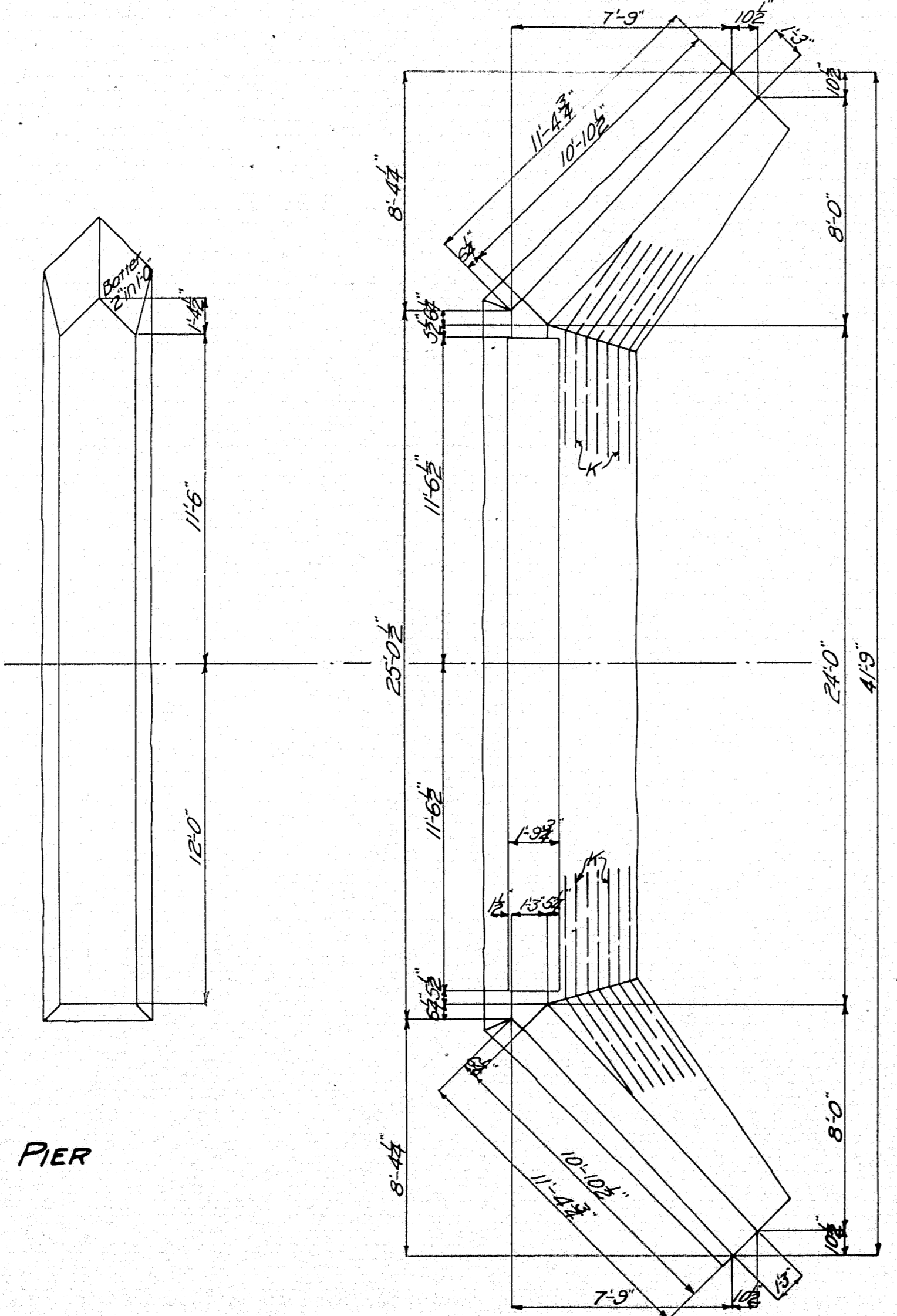
HALF TRANSVERSE SECTION HALF REAR VIEW

Note: Bridge is on a 3.74% grade. Bridge seats are level. Posts are vertical with horizontal tops.

Note: Cover the 2" slabs between superstructure and wings on the back side with 2 layers of heavy roofing felt. Coat concrete and back side of each layer of felt as applied with hot tar or asphalt.

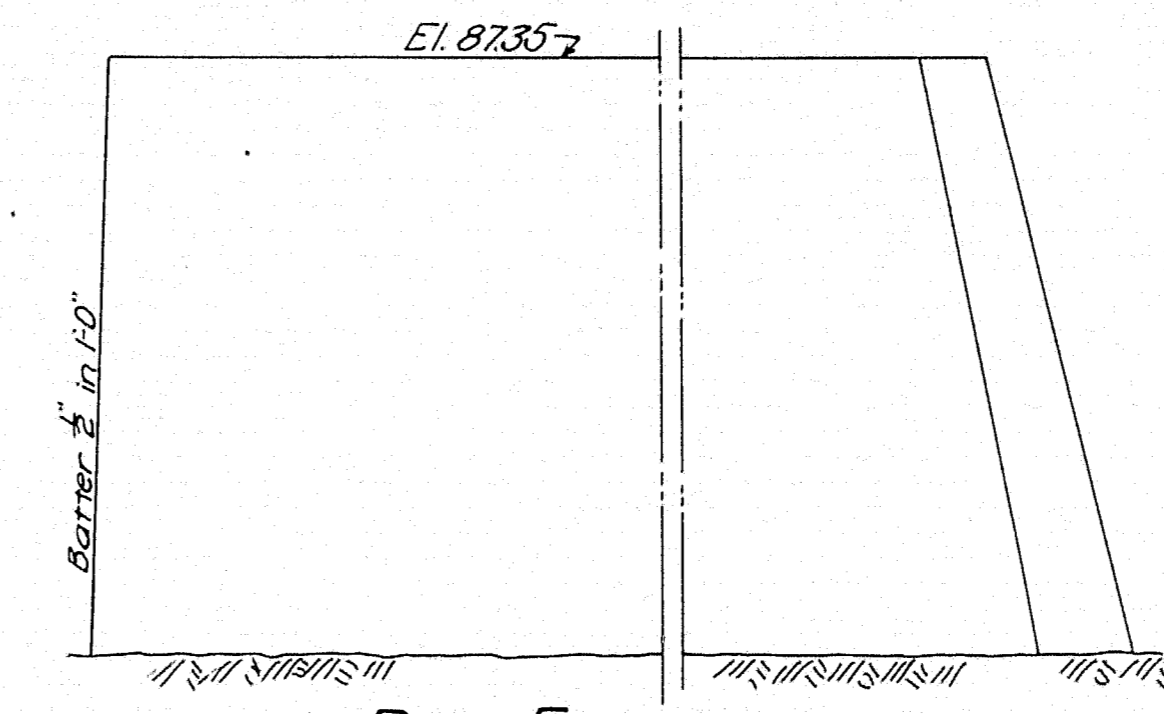


S. ABUTMENT No. 1

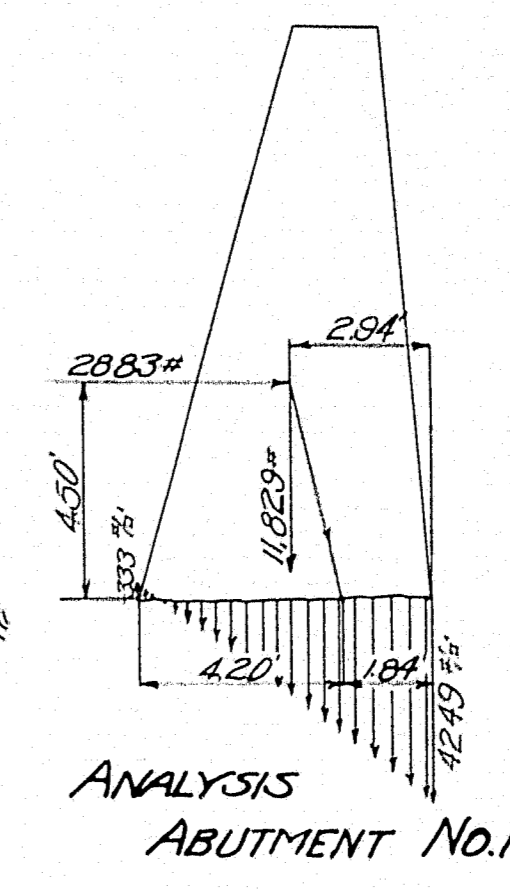


N. ABUTMENT No. 2

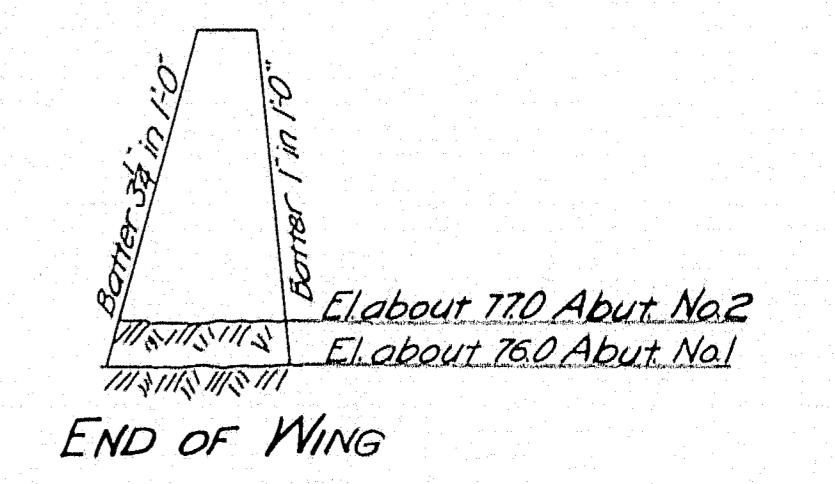
SUBSTRUCTURE PLAN



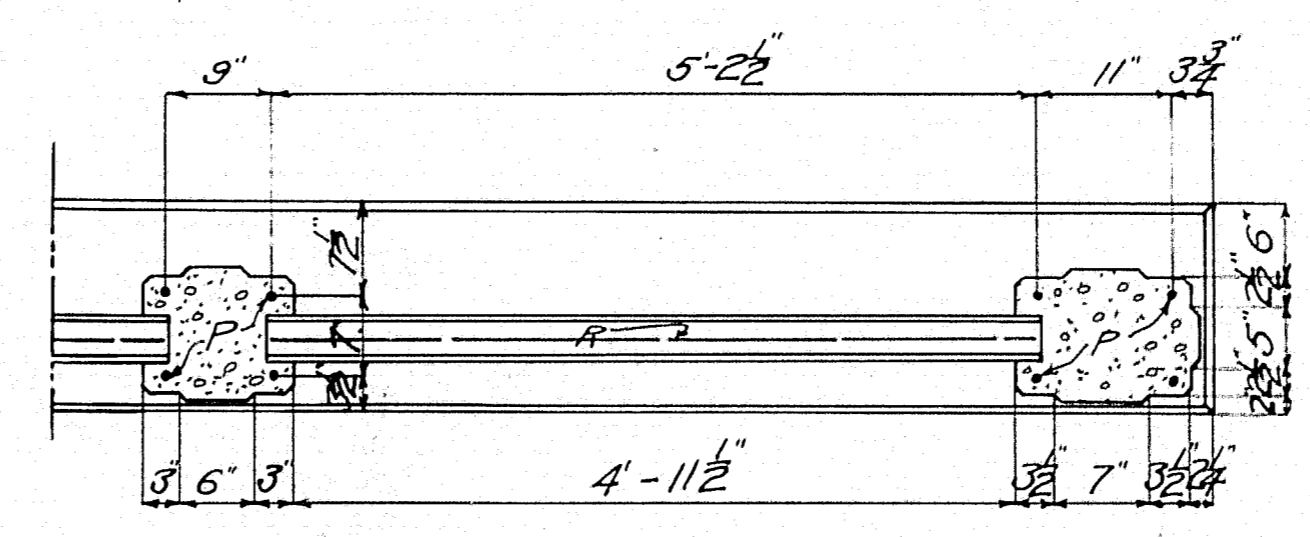
PIER ELEVATION



ANALYSIS ABUTMENT No. 1



END OF WING



RAIL DETAILS

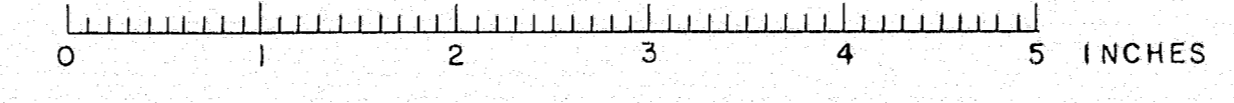
Curb and slab to be cast together. Steel for posts to be set in curb. Precast rail bars in lengths of 5'-12". Place rail bars in position with ends projecting into post forms 2". Wrap the end 6" of each bar with 2 layers of heavy roofing felt. Fold in and weld when post forms are removed, cut away all roofing felt left exposed. Posts on posts to be 3/4" thick. Chamfer all exposed edges of concrete 1/4" unless otherwise indicated.

**STEEL SCHEDULE**

Mark	Size	No. Req'd	Length	Location	Remarks
F	7/8"	46	18'-0 3/4"	Slabs	Bent
F2	7/8"	46	15'-9 3/4"	"	Straight
F3	1/2"	22	22'-9"	"	"
C	1/2"	8	15'-6"	Curbs	"
P	3/8"	48	4'-0"	Posts	"
R	3/8"	40	5'-3 1/2"	Rails	"
S	1/2"	64	5'-7"	Curbs	Bent
K	1/2"	30	8'-0"	Abut-Wings	Bent in field

All steel dimensions are given on center line of bar. All steel to be plain finish, structural grade.

MAINE HIGHWAY COMMISSION  
BRIDGE DIVISION  
**SAWYER BRIDGE**  
OVER  
**FALLS BROOK**  
IN THE TOWN OF  
**INDUSTRY, FRANKLIN CO.**  
PLAN  
REVISED SHEET 2 OF 2 AUGUSTA, ME., NOV. 27, 1925



Drawn by C.L.P.  
Checked by M.W.