

- NOTE -

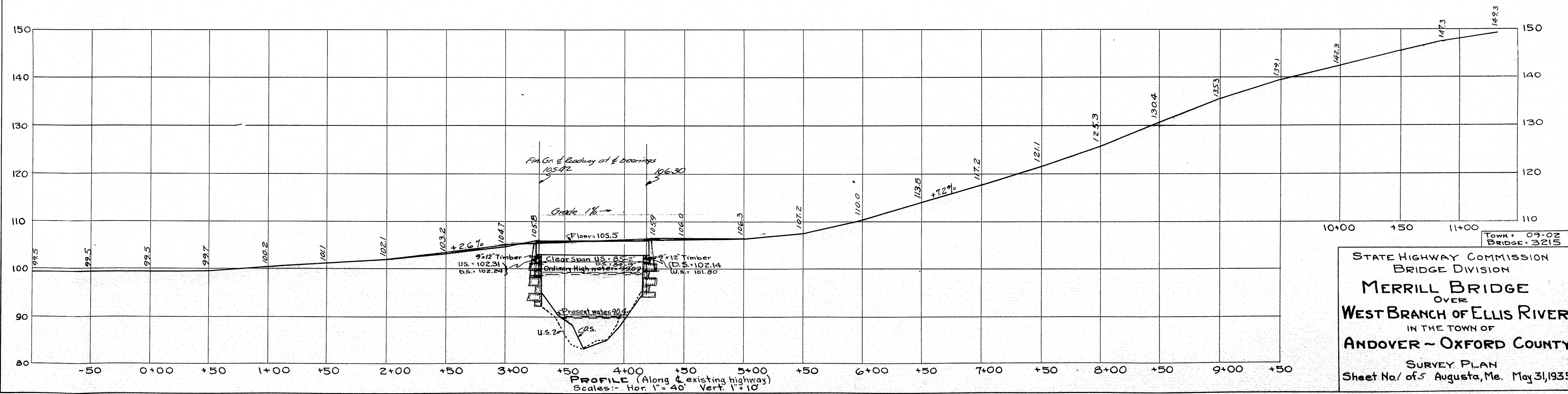
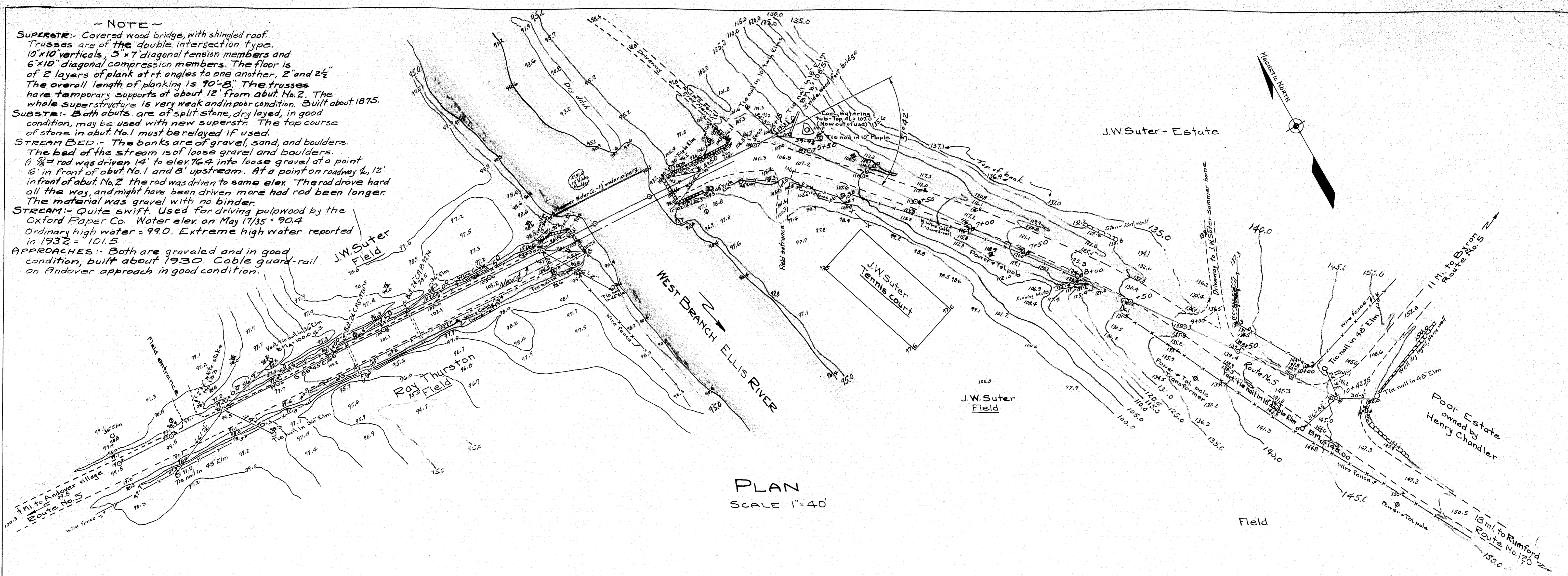
SUPERSTR: Covered wood bridge, with shingled roof. Trusses are of the double intersection type. 10"x10" verticals, 5"x7" diagonal tension members and 6"x10" diagonal compression members. The floor is of 2 layers of plank at rt. angles to one another, 2" and 2 1/2". The overall length of planking is 70'-3". The trusses have temporary supports at about 12' from abut. No. 2. The whole superstructure is very weak and in poor condition. Built about 1875.

SUBSTR: Both abuts. are of split stone, dry laid, in good condition, may be used with new superstr. The top course of stone in abut. No. 1 must be relaid if used.

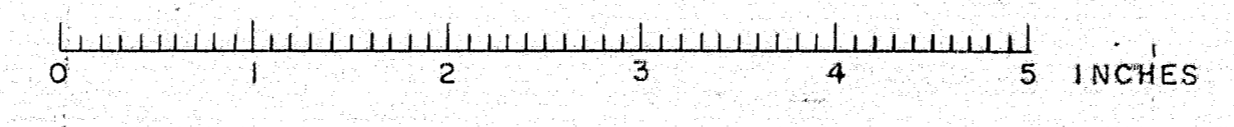
STREAM BED: The banks are of gravel, sand, and boulders. The bed of the stream is of loose gravel and boulders. A 3/8" rod was driven 14' to elev. 76.9 into loose gravel at a point 6' in front of abut. No. 1 and 8' upstream. At a point on roadway 4 1/2' in front of abut. No. 2 the rod was driven to same elev. The rod drove hard all the way, and might have been driven more had rod been longer. The material was gravel with no binder.

STEAM: Quite swift. Used for driving pulpwood by the Oxford Paper Co. Water elev. on May 17/35 = 90.4. Ordinary high water = 99.0. Extreme high water reported in 1932 = 101.5.

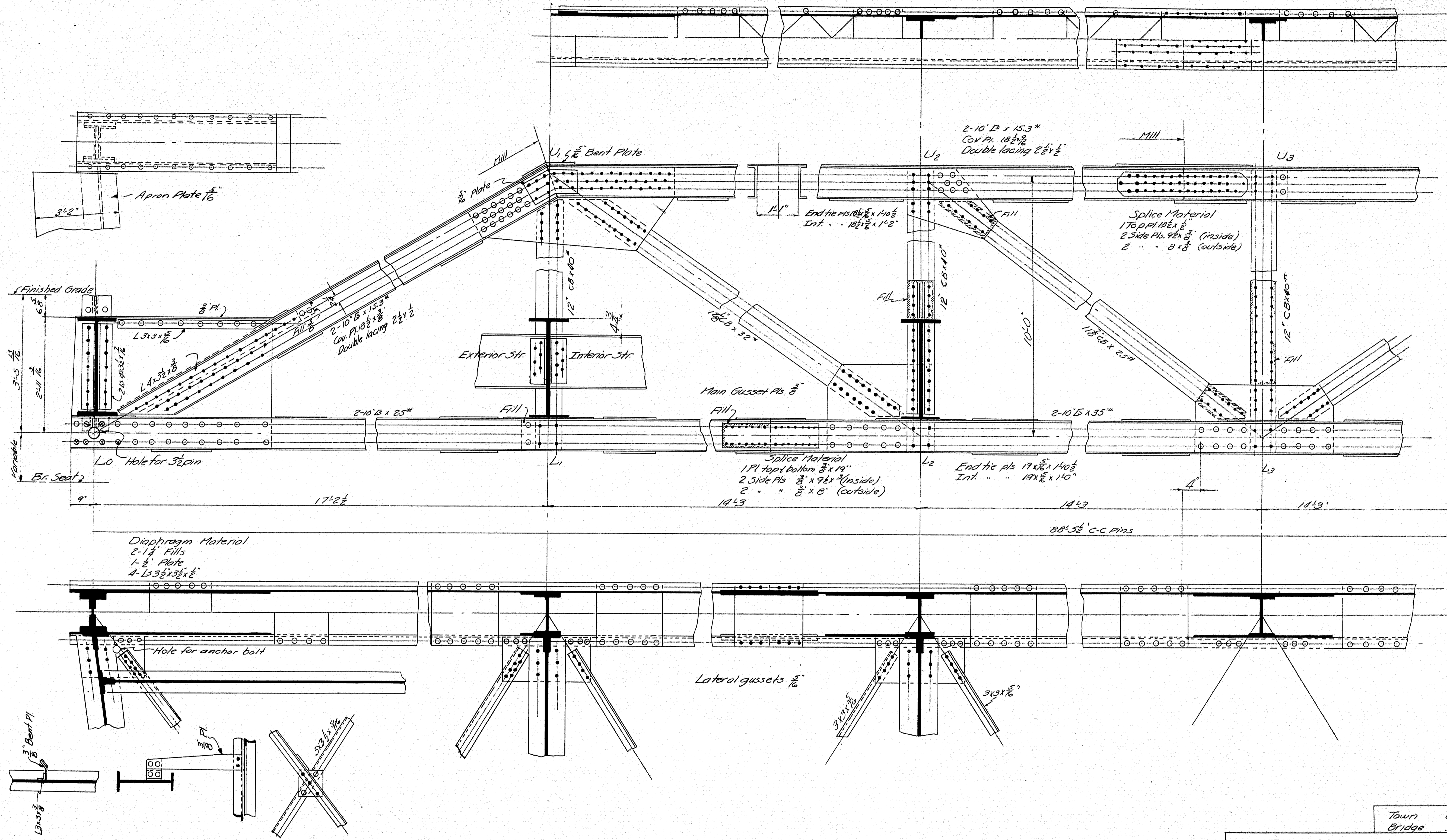
APPROACHES: Both are graveled and in good condition, built about 1930. Cable guard-rail on Andover approach in good condition.



Surveyed by F. Woods May 16-17/35
Plotted & Traced by F. Woods

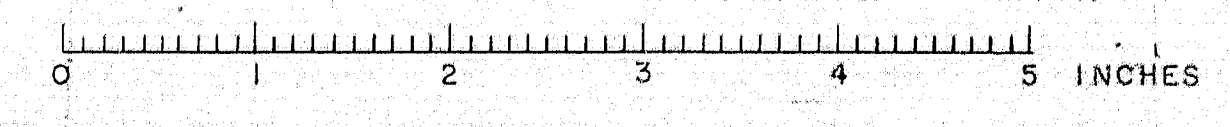


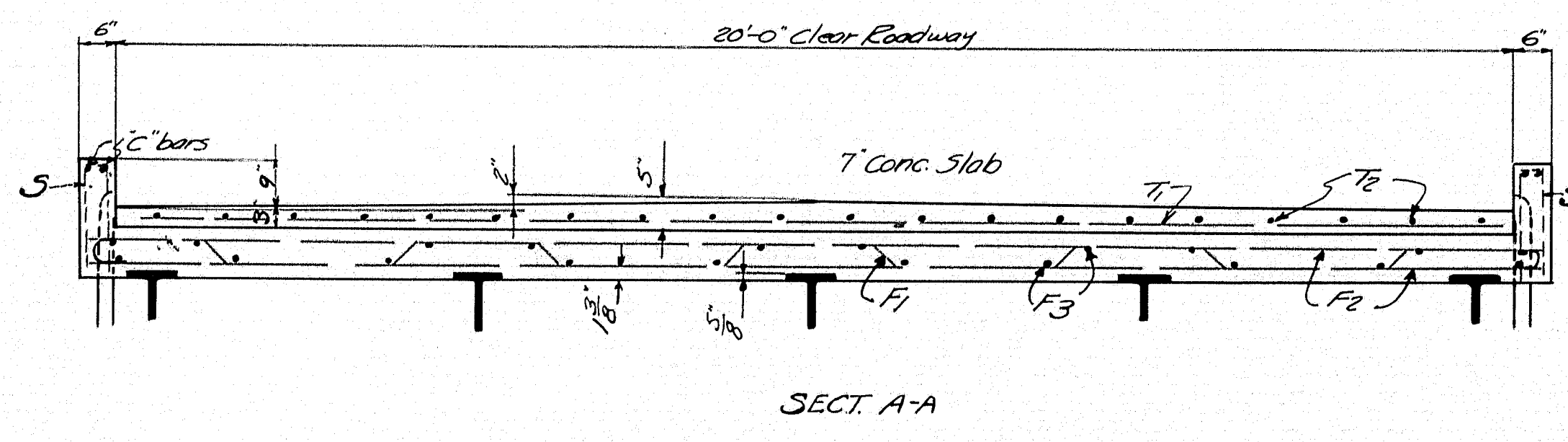
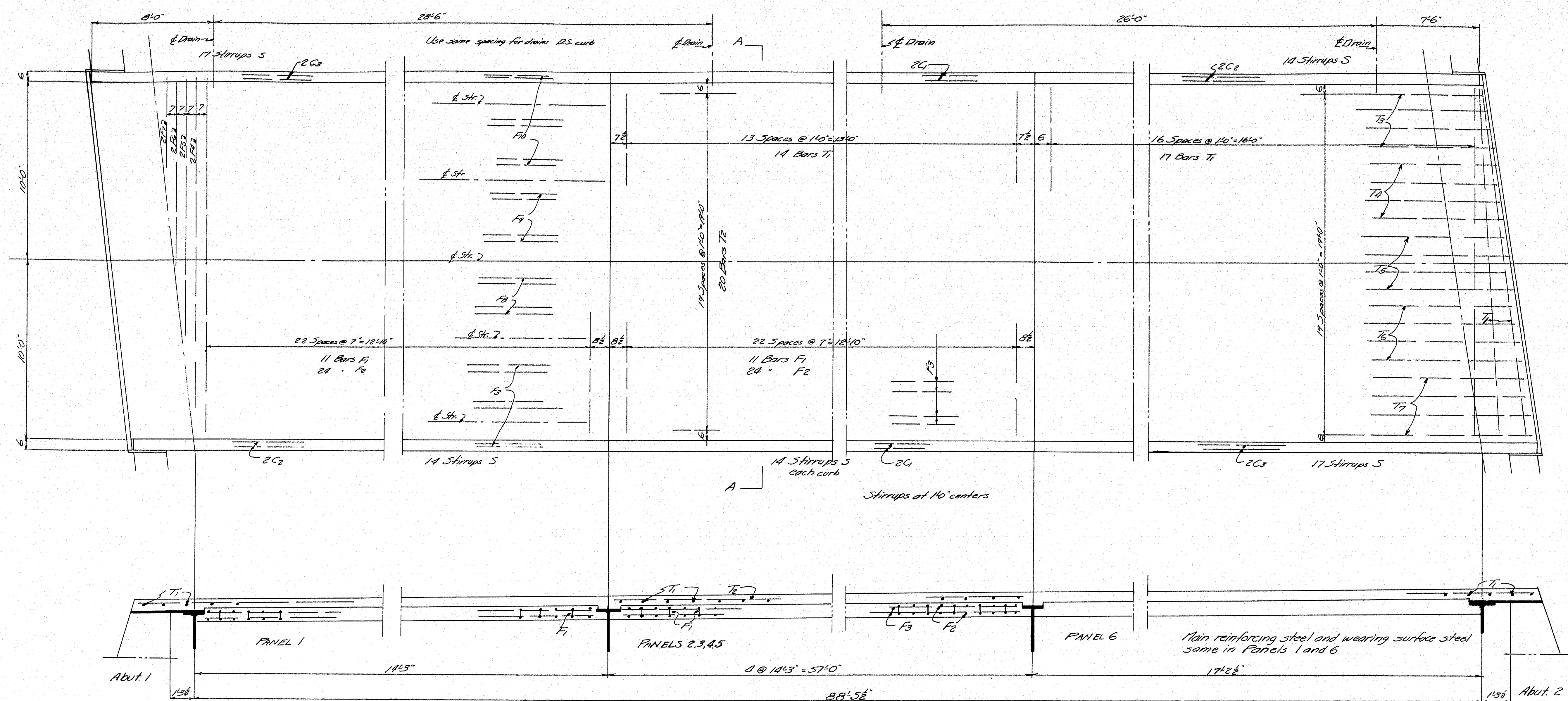
Plan by: E.B.
 Check by: E.



Rivets 3/4", except 5/8" in flange of rail B
 Detailed in accordance with "State Highway
 Commission" Specifications for Steel Highway Bridges.
 Other sections of equal strength may be substituted
 but no allowance for extra weight will be made
 for additional weight caused by such substitutions.
 All field connections of main members to be
 sub-punched and reamed.

Town 09-02
 Bridge 3215
 STATE HIGHWAY COMMISSION
 BRIDGE DIVISION
MERRILL BRIDGE
 over
WEST BRANCH OF ELLIS RIVER
 in the town of
ANDOVER, OXFORD COUNTY
 STEEL DETAILS
 Sheet 4 of 5 Augusta, Me. July 1935





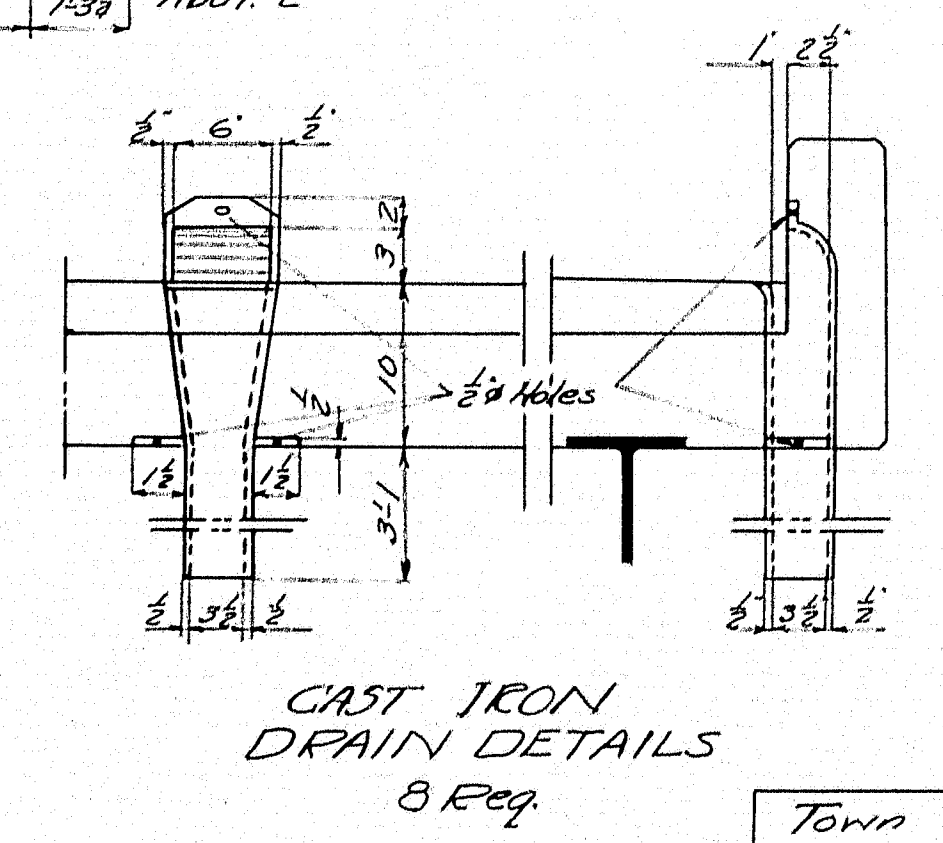
STEEL SCHEDULE
BENT

Labels 2'0" at 2'0" at 2'0" at 2'0" at 2'0" at 2'0" at 1'0"

F1 8/8 x 23'7 1/2" 66 Req. Slab

S1 5/8" x 21' 1/2" 174 Req

STRAIGHT									
Mark	Size	No	Length	Location	Mark	Size	No	Length	Location
F2	8/8	111	20'-9"	Slab	T1	7/8"	94	19'-9"	W. Surf.
F3	8/8	92	13'-4"	"	T2	"	80	14'-0"	"
F4	8/8	4	18'-3"	"	T3	"	8	16'-9"	"
F5	"	4	13'-10"	"	T4	"	8	17'-3 1/2"	"
F6	"	4	9'-5"	"	T5	"	8	17'-10"	"
F7	"	4	5'-0"	"	T6	"	8	18'-4 1/2"	"
F8	8/8	8	14'-0"	"	T7	"	8	18'-11"	"
F9	"	8	14'-7 1/2"	"	J1	5/8"	20	26'-0"	Abut. Caps
F10	"	12	15'-3"	"	J2	"	104	8'-9"	"
C1	"	16	14'-0"	Curb					
C2	"	4	16'-6"	"					
C3	"	4	19'-6"	"					



STATE HIGHWAY COMMISSION
BRIDGE DIVISION
MERRILL BRIDGE
over
WEST BRANCH OF ELLIS RIVER
in the town of
ANDOVER OXFORD COUNTY
FLOOR PLAN AND STEEL SCHEDULE
Sheet 5 of 5 August 16 July 1935.

Plan by: EB
Check by: VE

