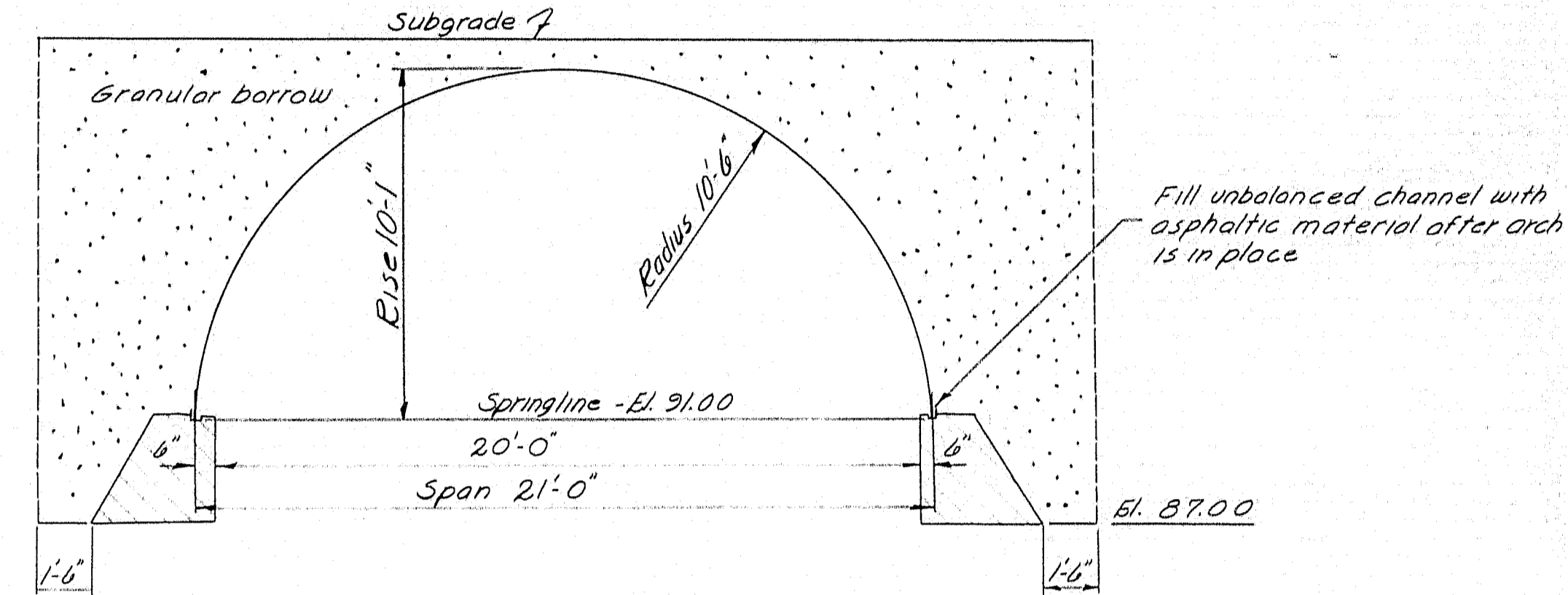
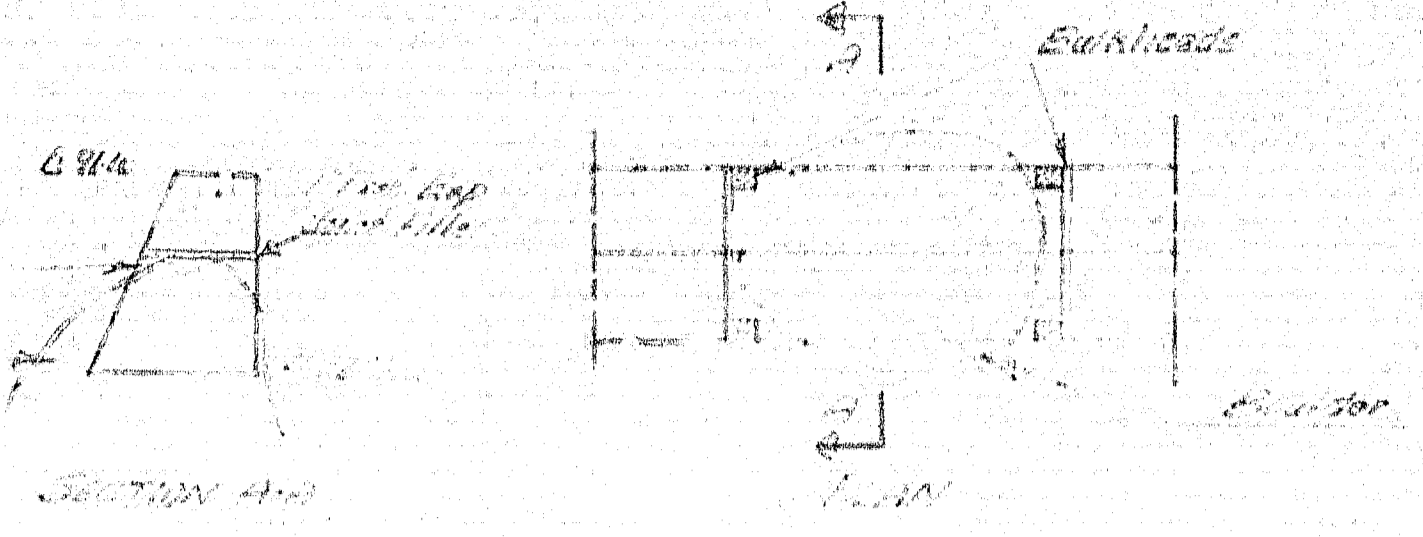
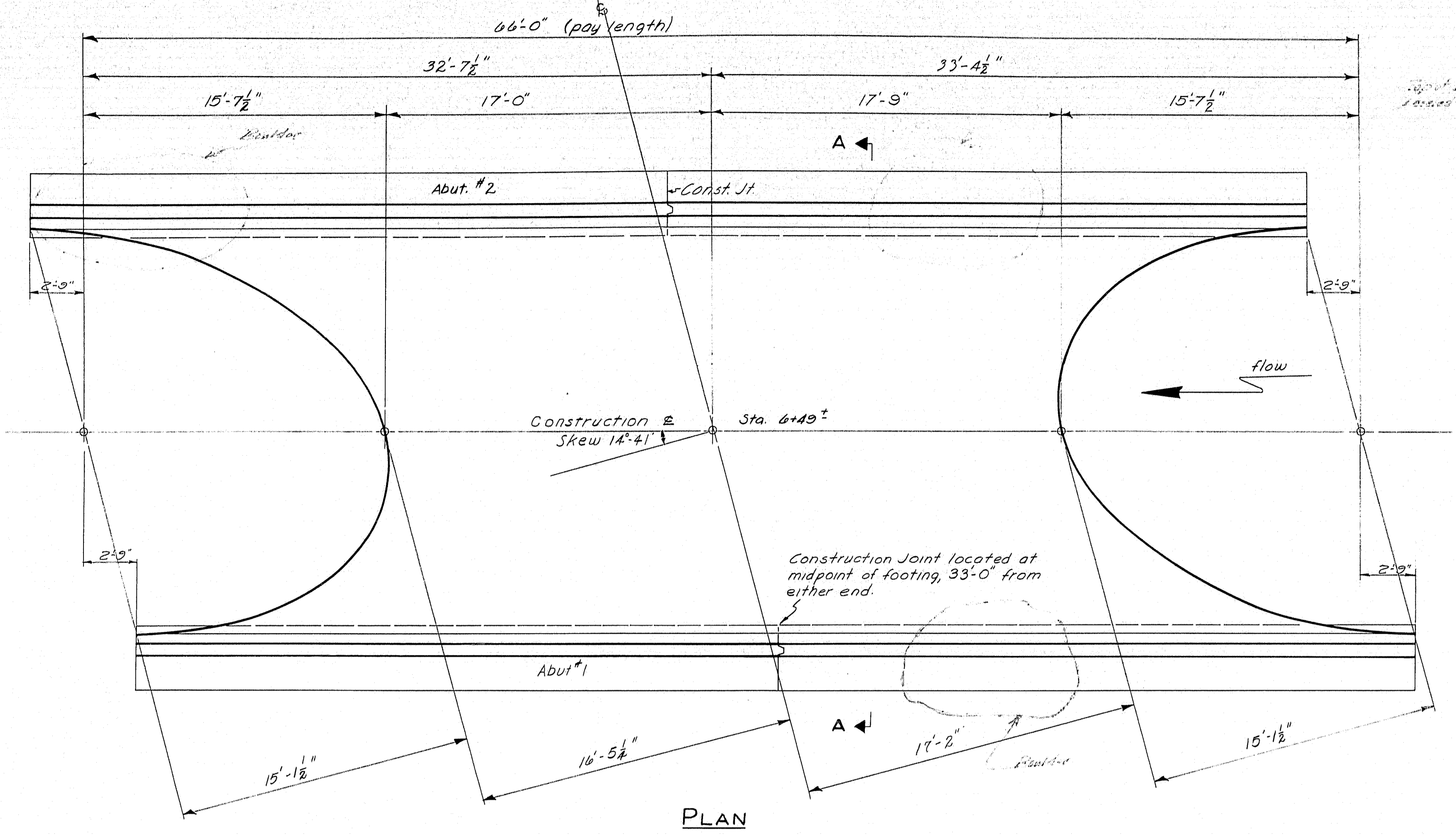
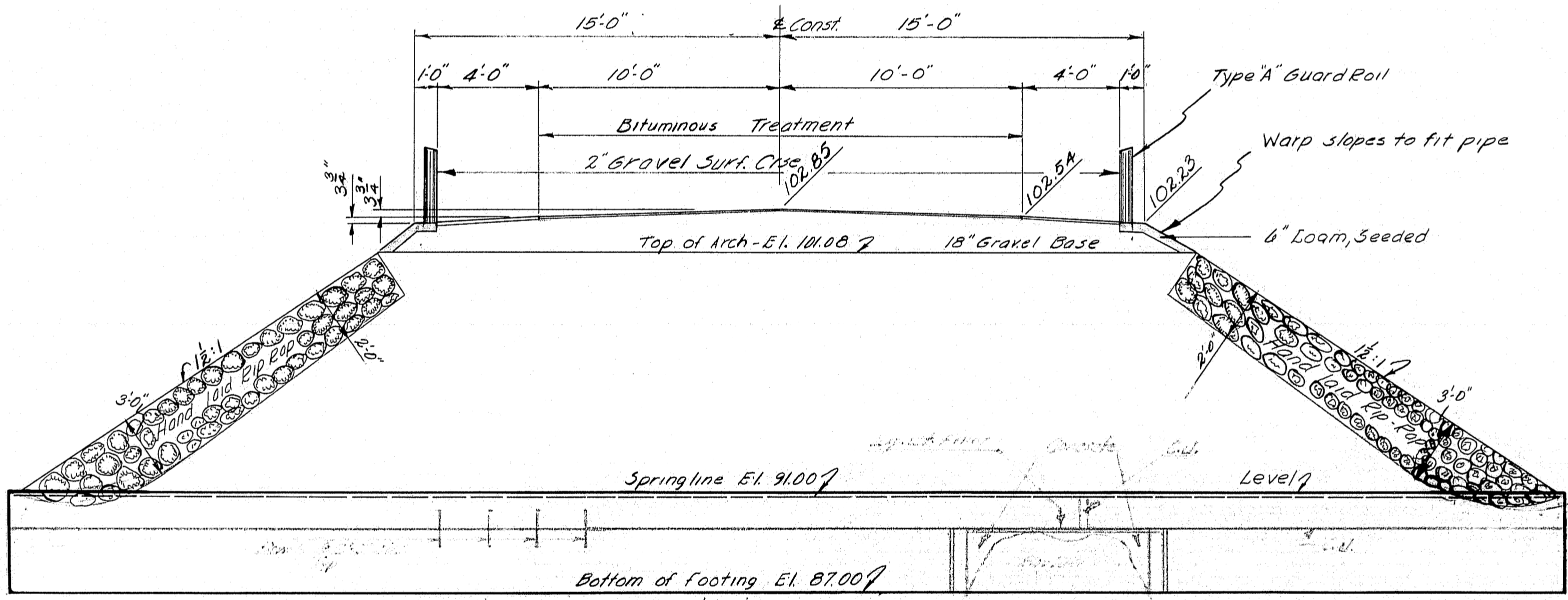




B. P. R. DIV. NO.	STATE	PROJECT NUMBER	SHEET NO.	TOTAL SHEETS
1	MAINE			

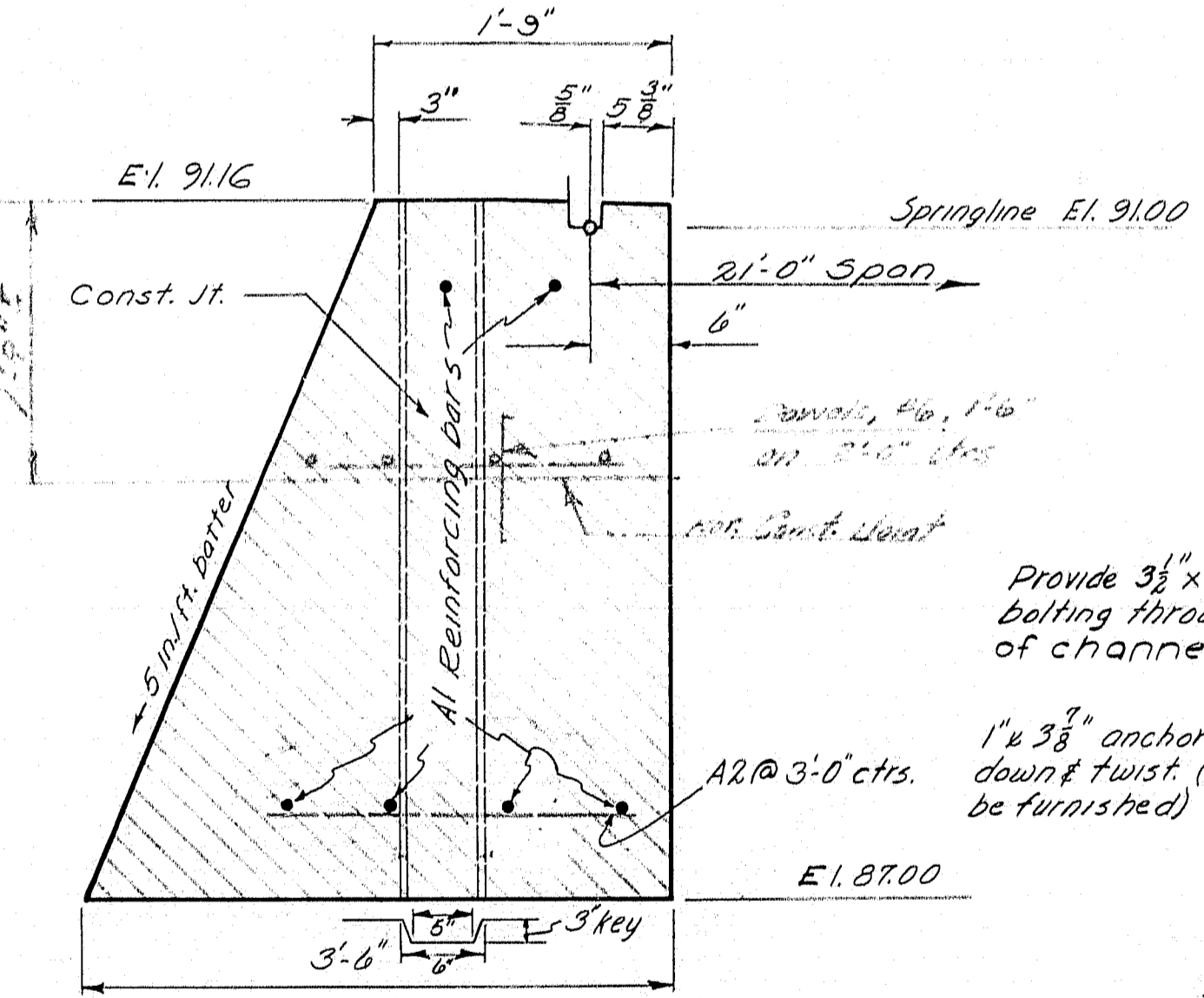


SECTION A-A

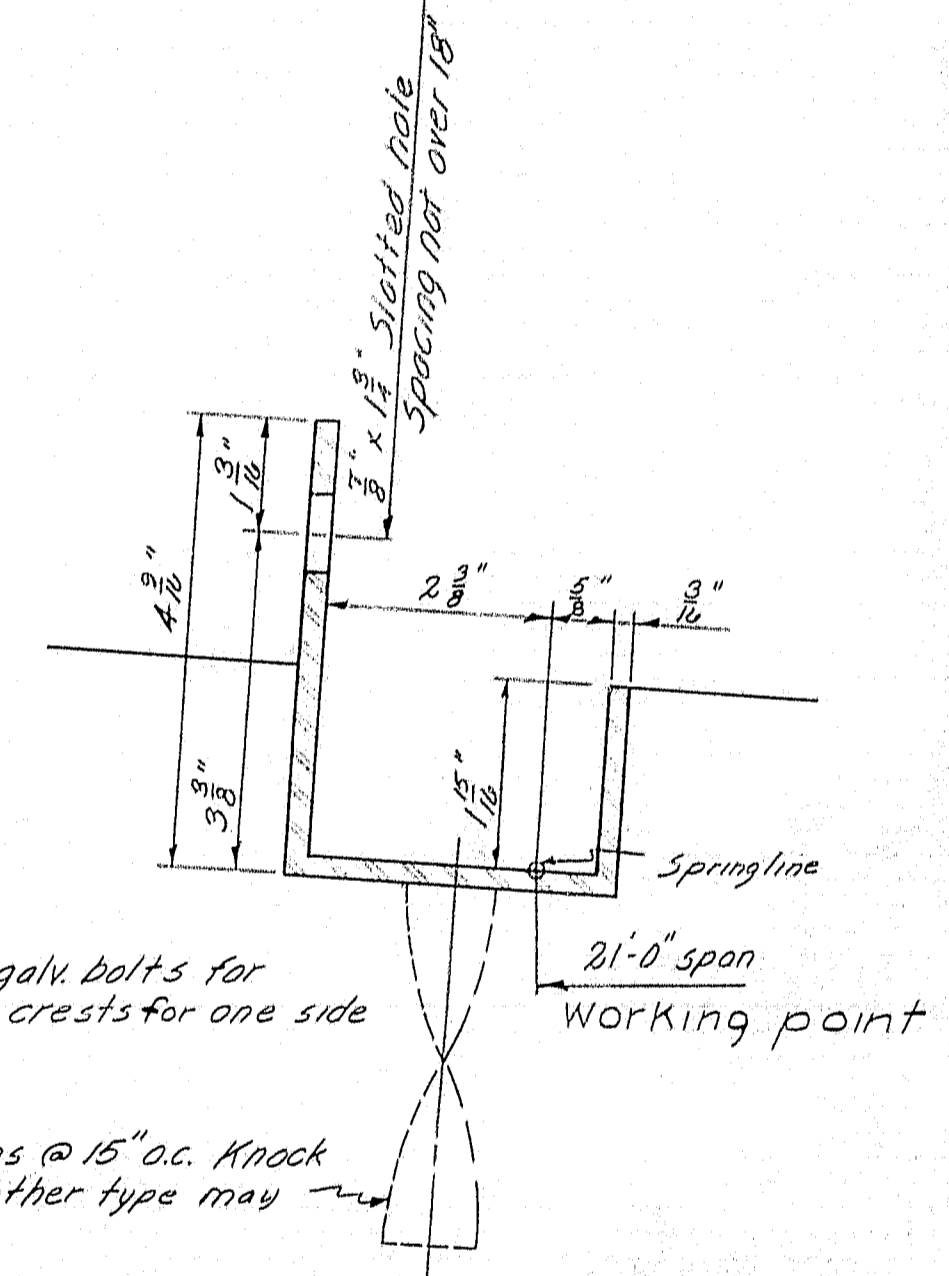


NORMAL SECTION @ STA. 6+49

See Sheet #3 for Typical Section.



FOOTING SECTION



UNBALANCED CHANNEL

Unbalanced channel shall be hot dip galvanized after fabrication.

NOTES:  
 Material - One structural plate arch, span 21'-0", rise 10'-1" (span & rise may be varied slightly if approved by Engineer), with a minimum plate thickness of gage #3 to dimensions shown, complete with bolts and unbalanced channel. Channel shall be furnished in proper lengths to make one unit of 66'-0" for each abutment.  
 Rein. steel: A1, 2A bars #6, length 32'-6"; A2, 4A bars #4, length 2'-4".  
 Specs. - State of Maine, S.H.C. standard specifications, Revision of Jan 1950  
 Concrete - Class B  
 Design - H15-4A

Field changes in Green, Oct 1957

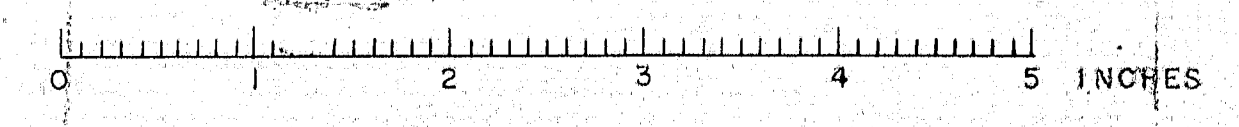
DESIGN - COFFIN  
 TRACE - COFFIN  
 CHECK - HIGGINS

BRIDGE NO. 2135  
 SURVEY -  
 E.L.O.T.

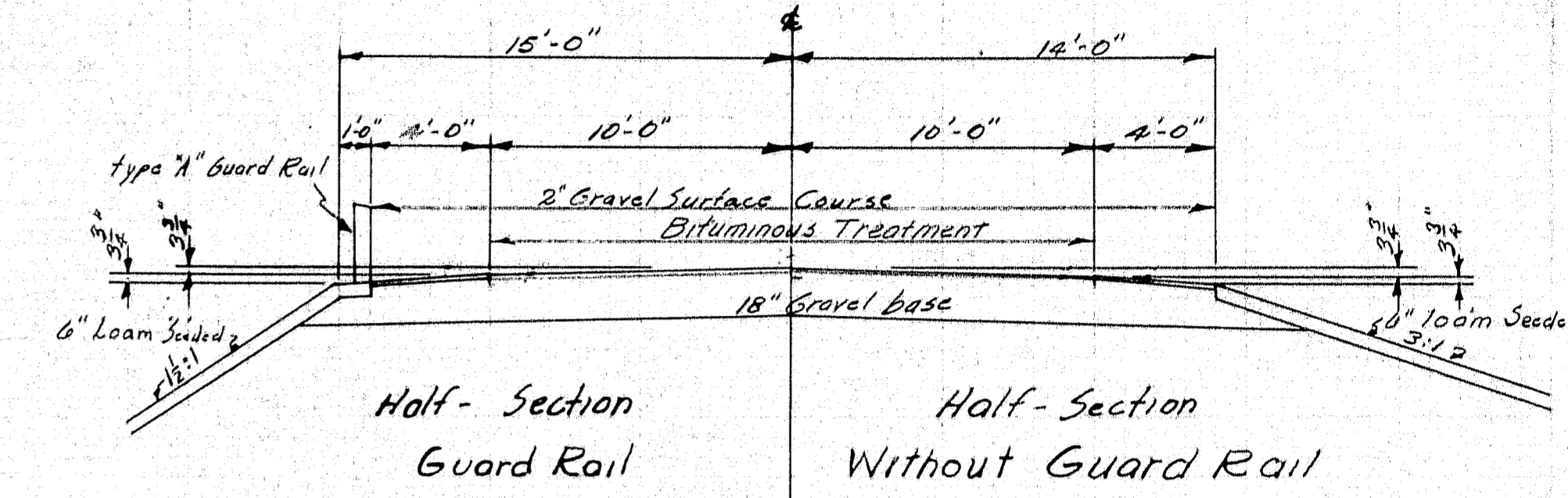
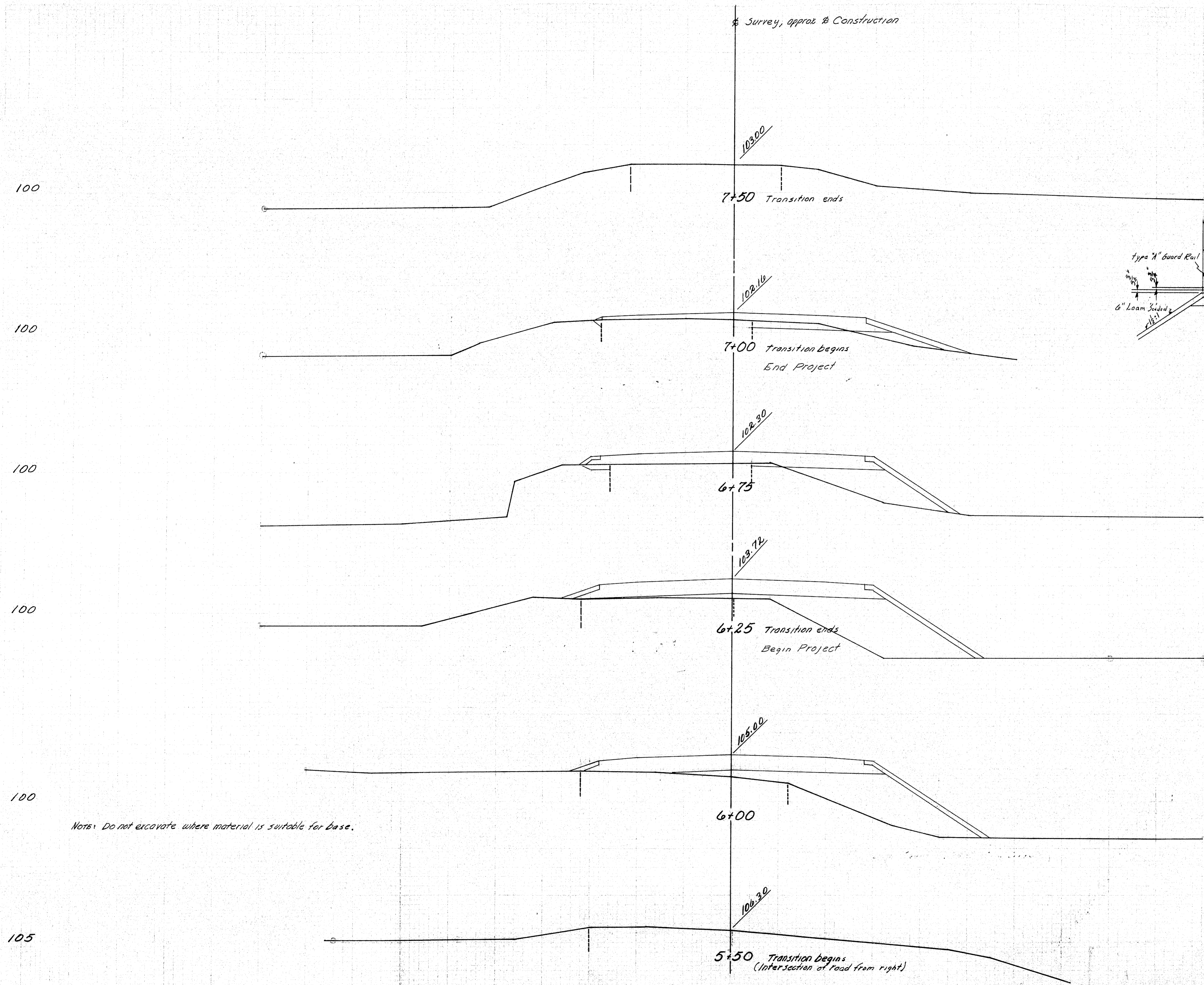
STATE HIGHWAY COMMISSION  
 BRIDGE DIVISION

**CORSON CORNER BRIDGE**  
 OVER  
**CORSON STREAM**  
 BETWEEN THE TOWNS OF  
**HARTLAND AND ATHENS**  
**SOMERSET COUNTY**  
 ARCH DETAILS

SHEET 2 OF 3 AUGUSTA, MAINE MAY 1957



D. P. R. DIV. NO.	STATE	PROJ. NO.	SHEET NO.	TOTAL SHEETS
1	MAINE			



Typical Sections

Notes: Do not excavate where material is suitable for base.

DES-COFFIN CHK- H.O.H.	BRIDGE- 2135
STATE HIGHWAY COMMISSION BRIDGE DIVISION	
CORSON CORNER BRIDGE OVER CORSON STREAM BETWEEN THE TOWNS OF HARTLAND AND ATHENS SOMERSET COUNTY	
X-SECTIONS	
SHEET 3 OF 3 AUGUSTA, MAINE MAY 1956	

