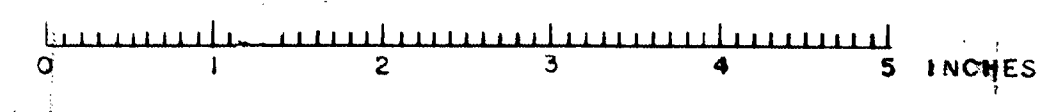
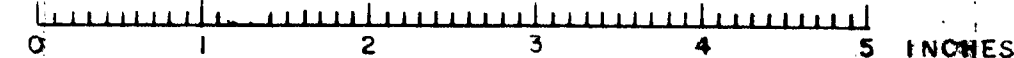


SURVEY BLAKE PLOT & TRACE WELCH	BRIDGE - 3312
STATE HIGHWAY COMMISSION BRIDGE DIVISION	
VARNEY BRIDGE	
OVER	
GREAT WORKS RIVER	
IN THE TOWN OF	
SOUTH BERWICK	
YORK COUNTY	
SURVEY	
SHEET 1 OF 5	AUGUSTA, MAINE OCT. 1953

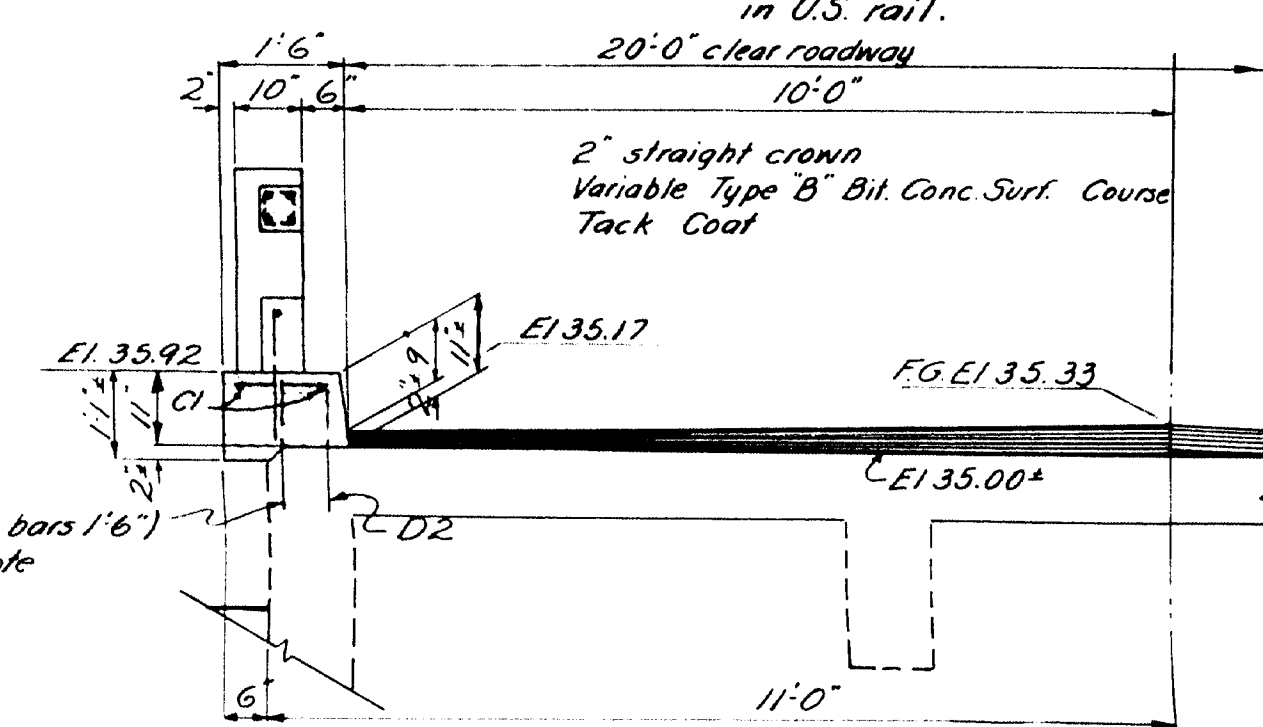
59-96





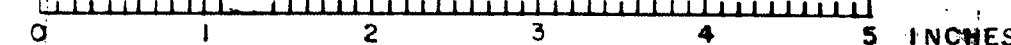
59-92

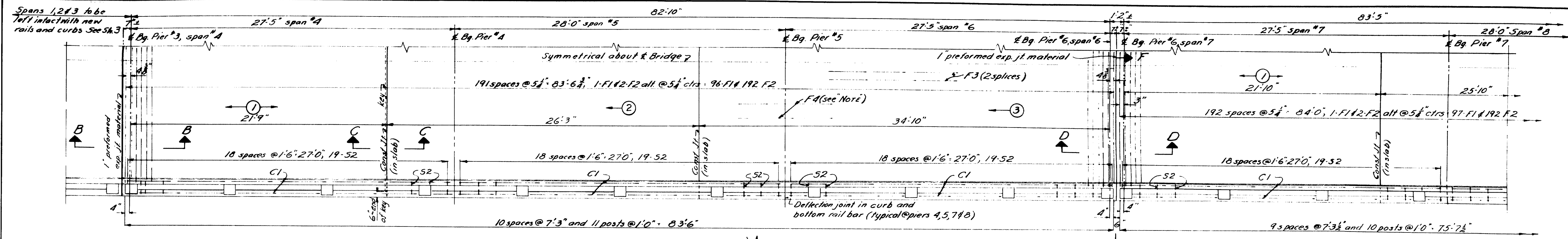




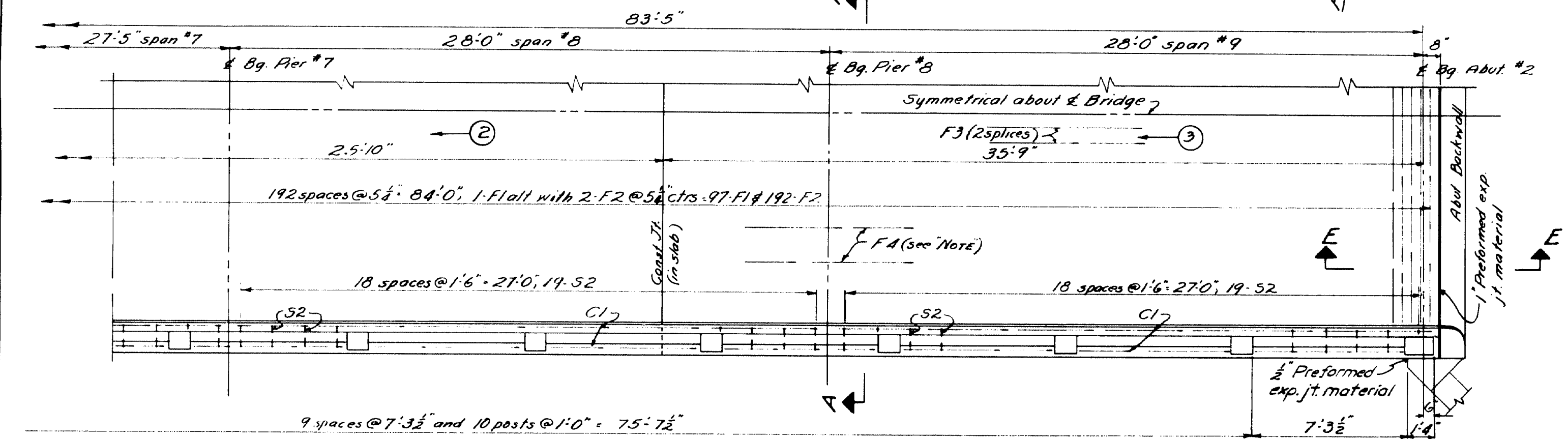
SECTION A-A (FINAL)

DESIGN— RISSSEL TRACE— SAVAGE CHECK— <i>Smith</i>	BRIDGE— 3312
STATE HIGHWAY COMMISSION BRIDGE DIVISION	
VARNEY BRIDGE	
OVER	
GREAT WORKS RIVER	
IN THE TOWN OF	
SOUTH BERWICK	
YORK COUNTY	
SUPERSTR. SPANS 1-3, PIER CAPS, RAIL, REINF STEEL	
SHEET 3 OF 5 AUGUSTA MAINE MAY 1954	

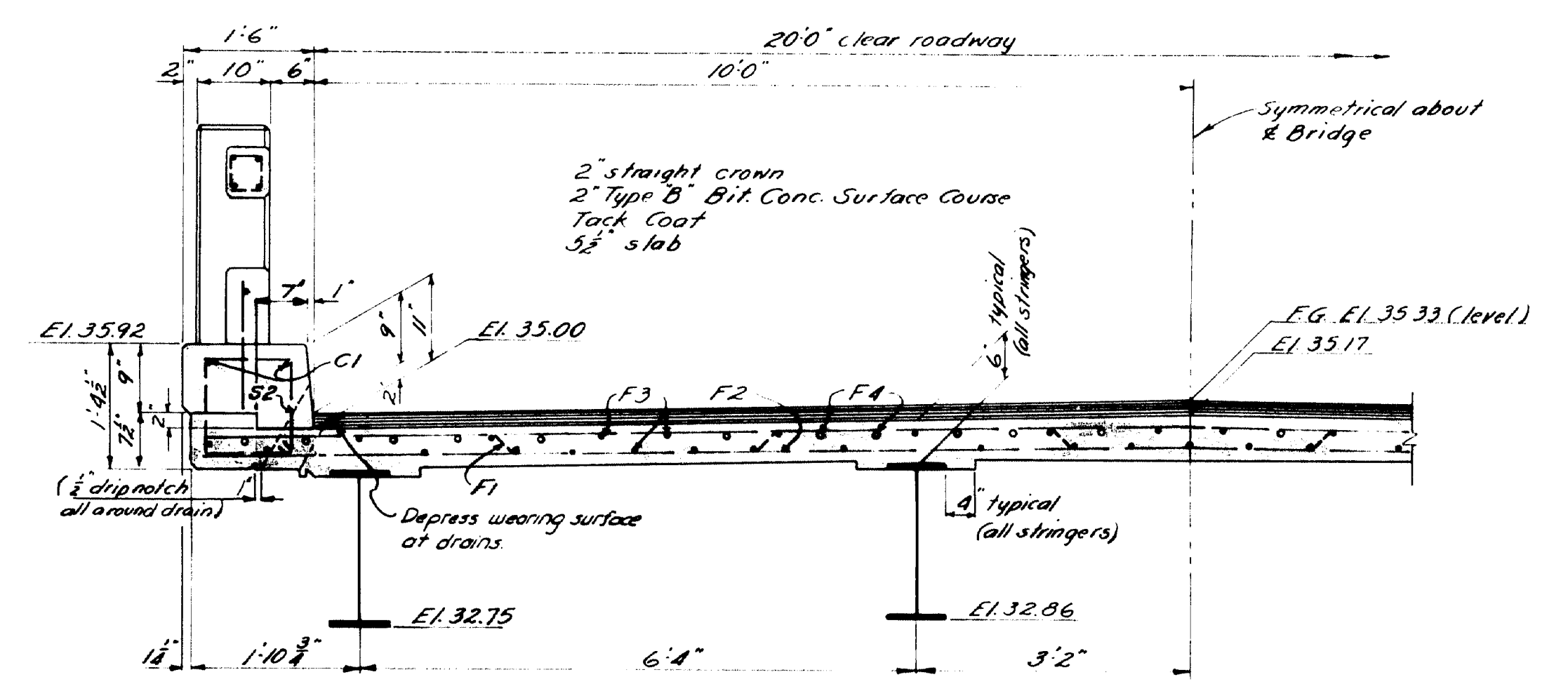




PART PLAN

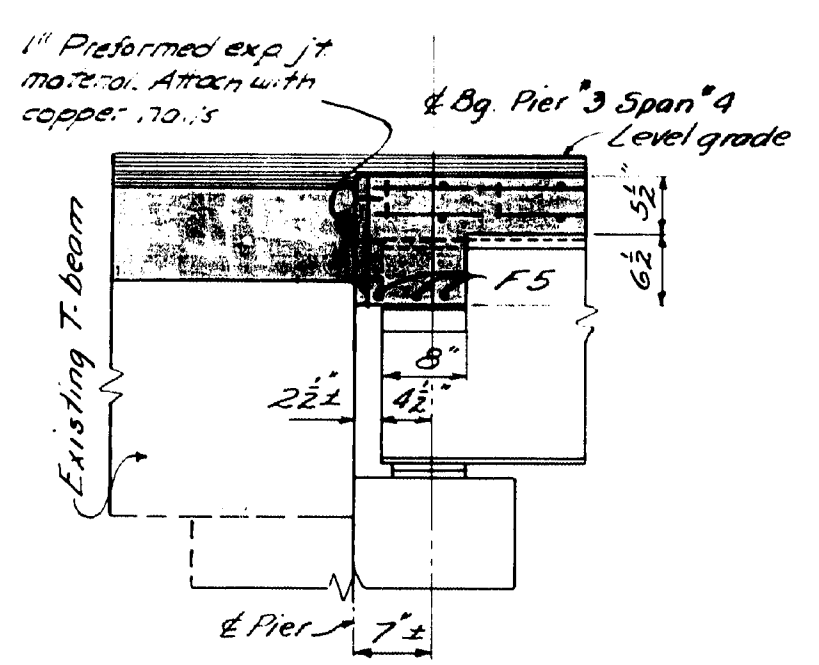


PART PLAN (CONTD)

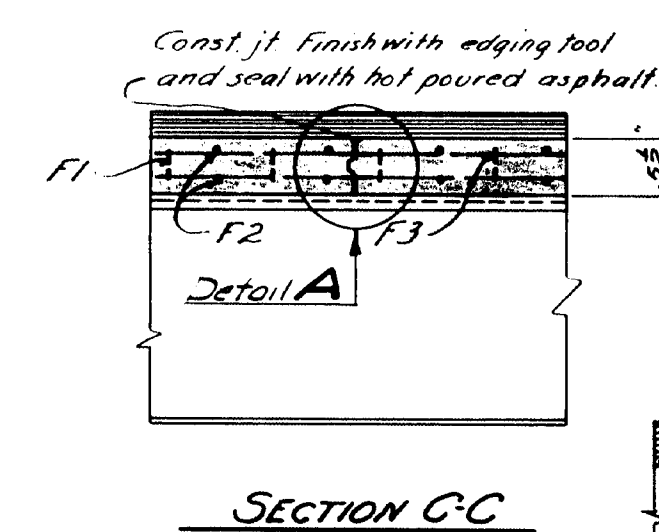


SECTION A-A

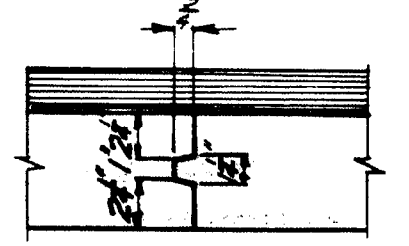
NOTE: Bars F4 to be placed over Piers 4, 5, 7 & 8 and are to extend equally into spans adjoining at those piers.  
 Bars C1 do not extend through deflection joints in curbs at piers 4, 5, 7 & 8.  
 Curbs are carried over construction joints in slab.  
 Encircled numbers in Part Plan indicate order and direction of placing concrete in slab. If the contractor wishes to revise this order he may do so only with the prior consent of the Engineer and using new distances calculated by the Engineer.  
 Place drain @ middle of each span in both curbs.  
 Bars F3 to be carried thru construction joints.



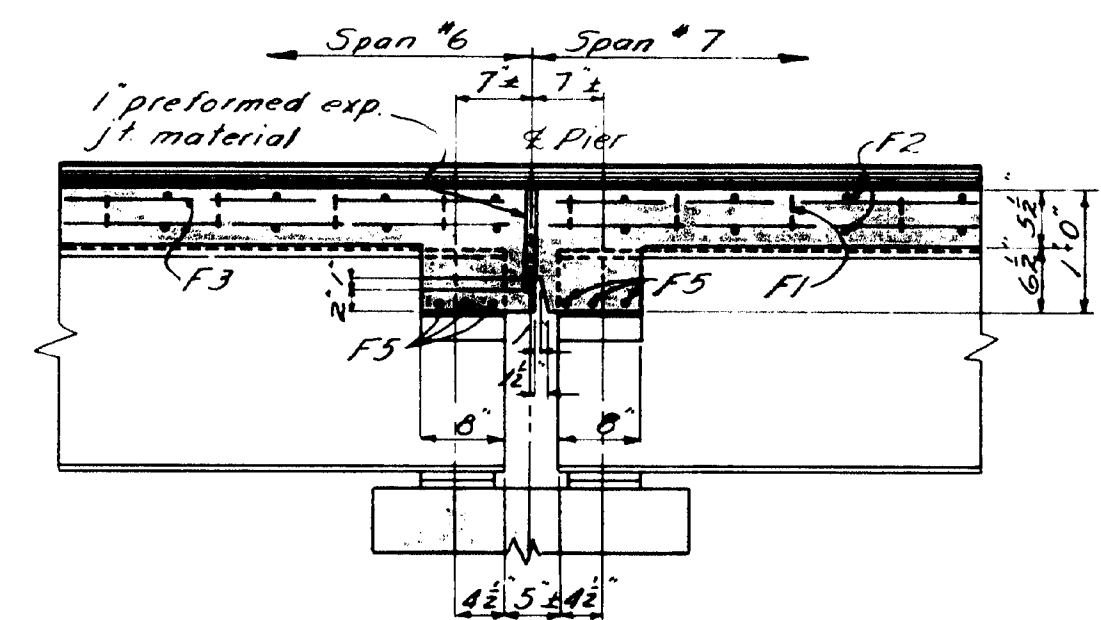
SECTION B-B



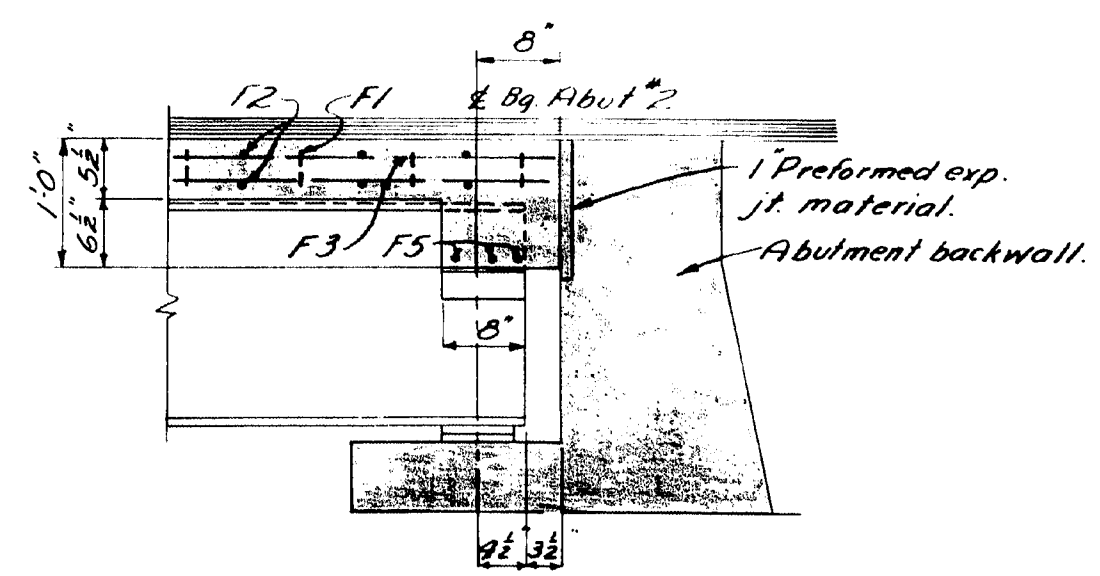
SECTION C-C



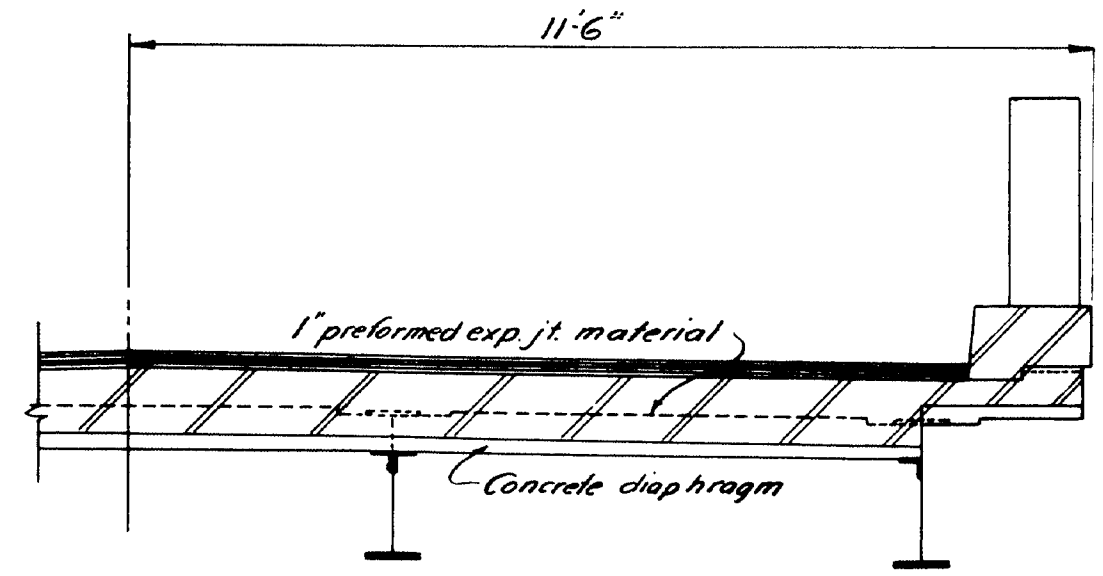
DETAIL A  
 key to be placed at all const. jts. in slab. Stop key 6" in from face of slab.



SECTION D-D



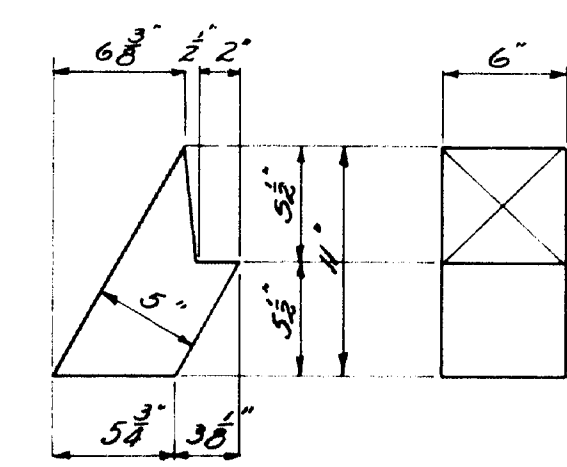
SECTION E-E



SECTION F-F

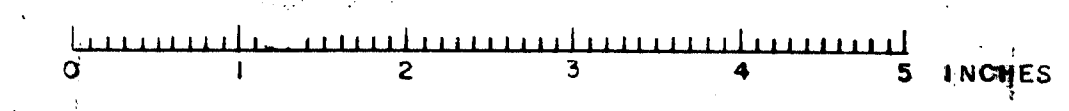
DESIGN  
 Loading: H15-44  
 15,000 psi  
 16,000 psi  
 n = 10  
 Specifications: AASHTO Standard Specifications for Highway Bridges 1953.

CONCRETE CLASSIFICATION  
 Slabs, curbs & pier caps ----- Class A  
 Cap & DS wing, Abut. #2 ----- Class B  
 Rail posts and coors ----- Class Y

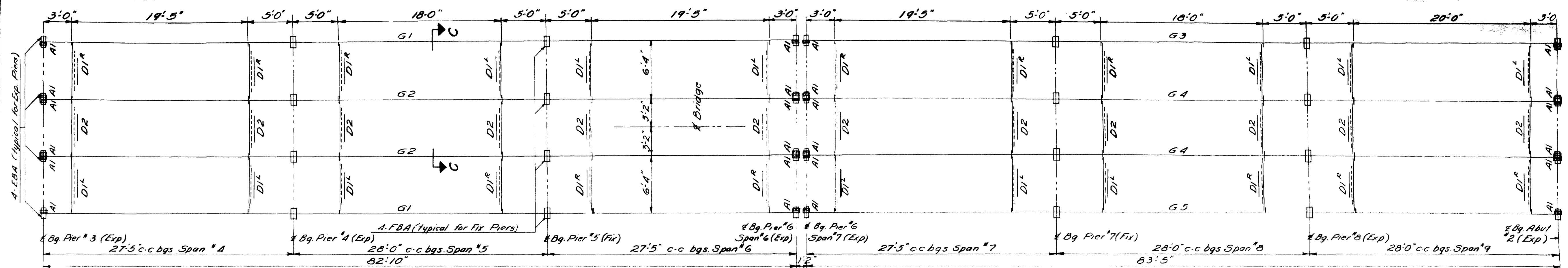


DRAIN FORMS FOR SPANS 4-9 incl.  
 Construct of 24 gage galv. iron; 12 reqd. for placing see NOTE.

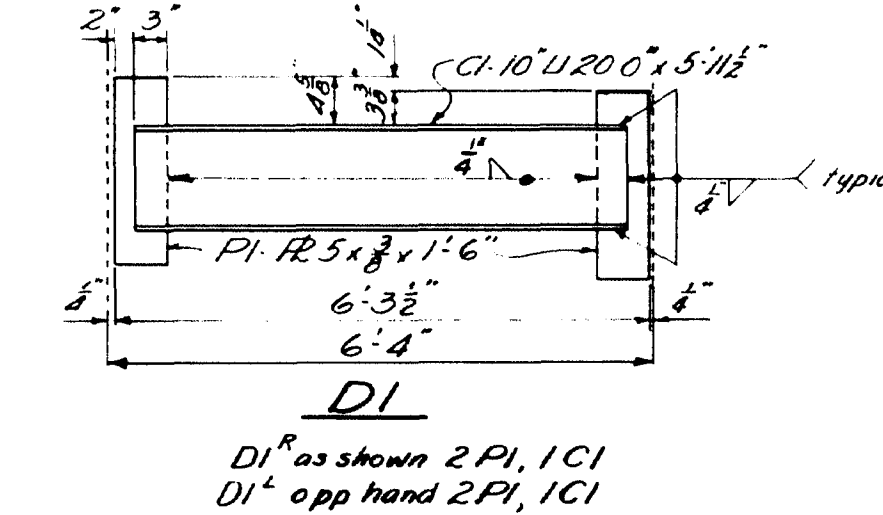
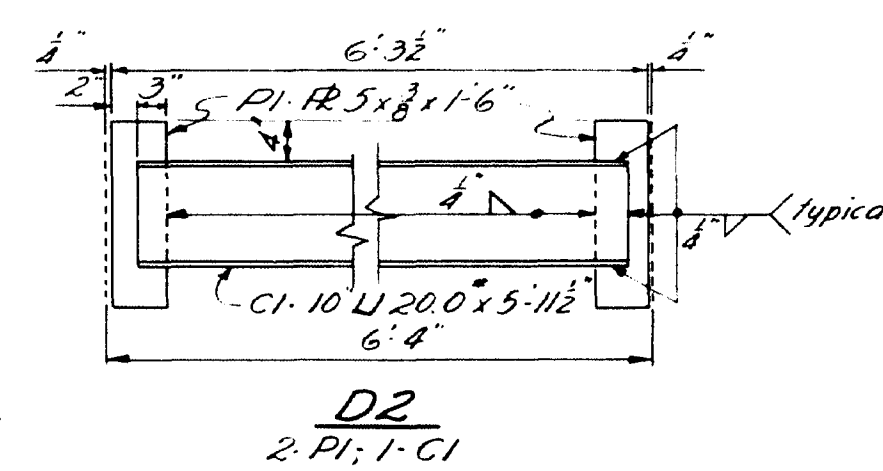
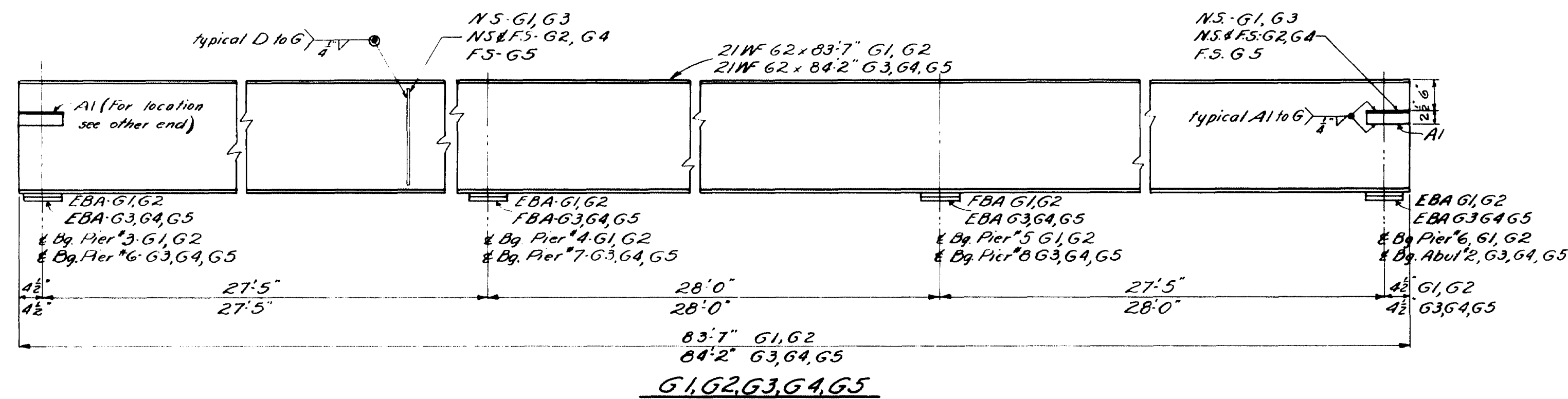
DESIGN-RISSEL TRACE-SAVAGE CHECK- <i>[Signature]</i>	BRIDGE- 3312
STATE HIGHWAY COMMISSION BRIDGE DIVISION	
VARNEY BRIDGE OVER GREAT WORKS RIVER IN THE TOWN OF SOUTH BERWICK YORK COUNTY SUPERSTR. SPANS 4 TO 9 INCL. SHEET 4 OF 5 AUGUSTA, MAINE, MAY 1954.	





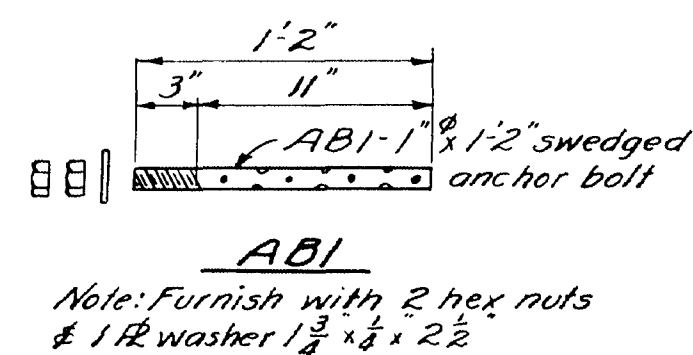
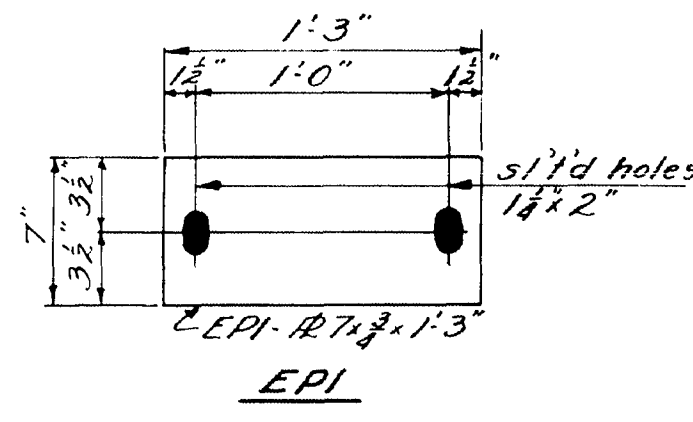
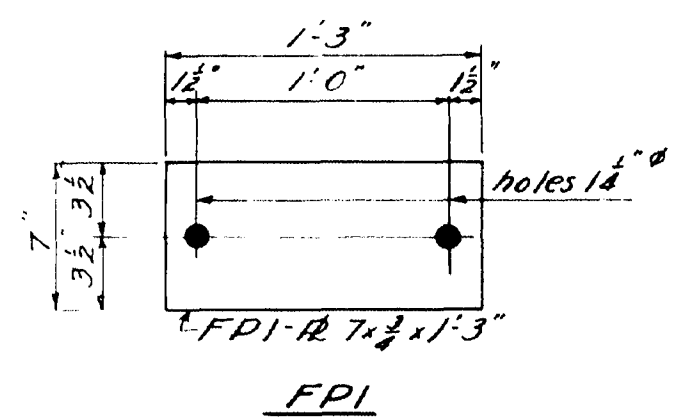


ERECTION DIAGRAM

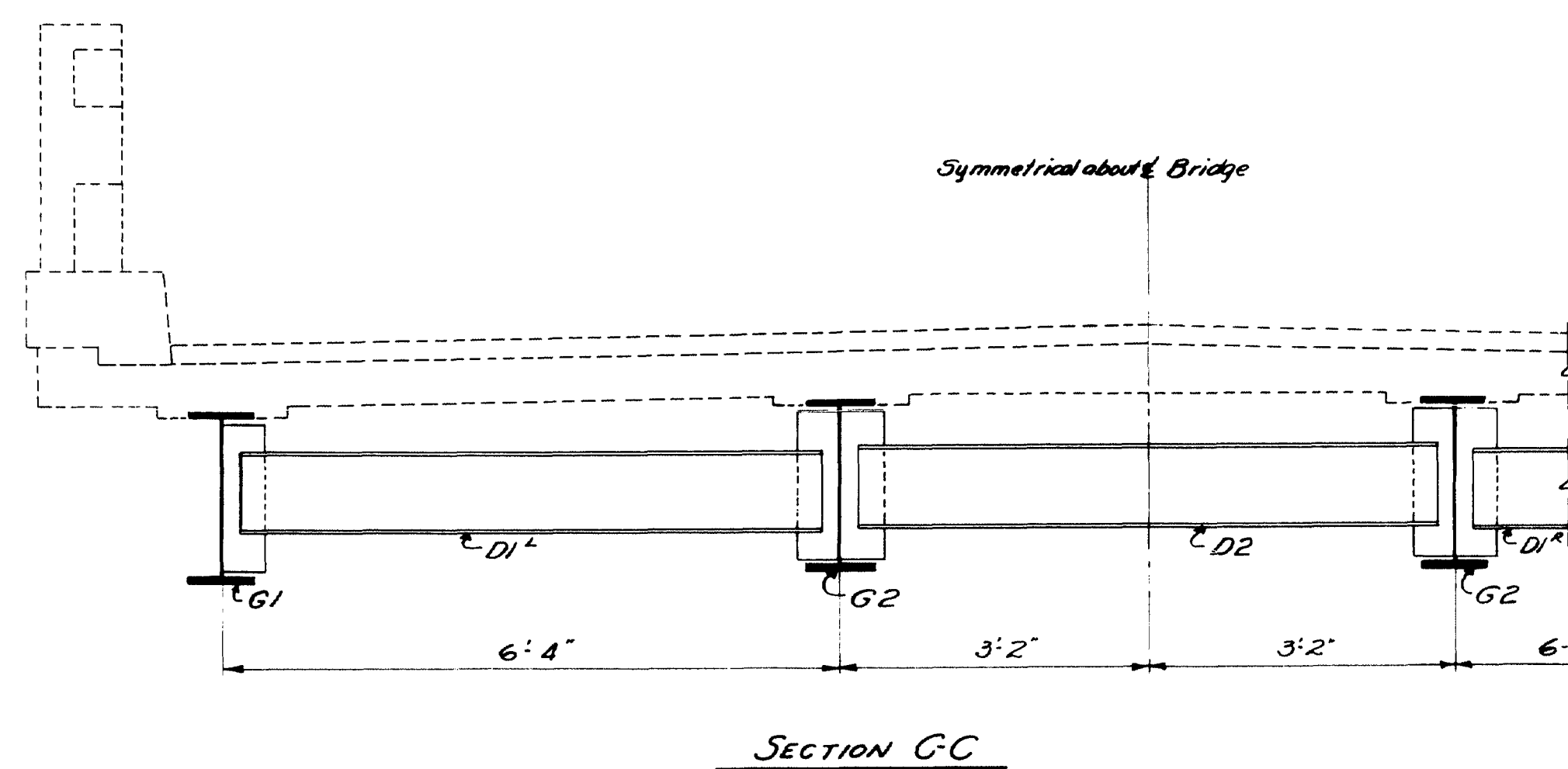
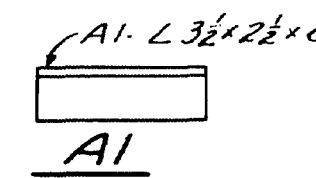
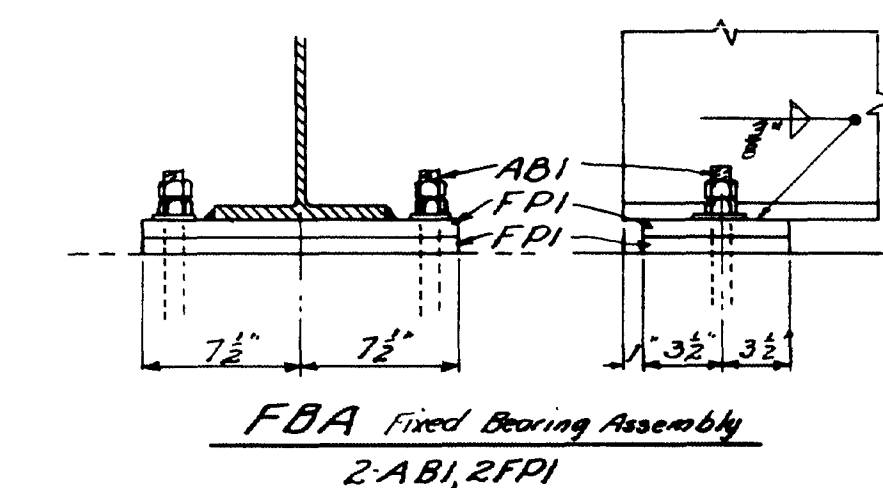
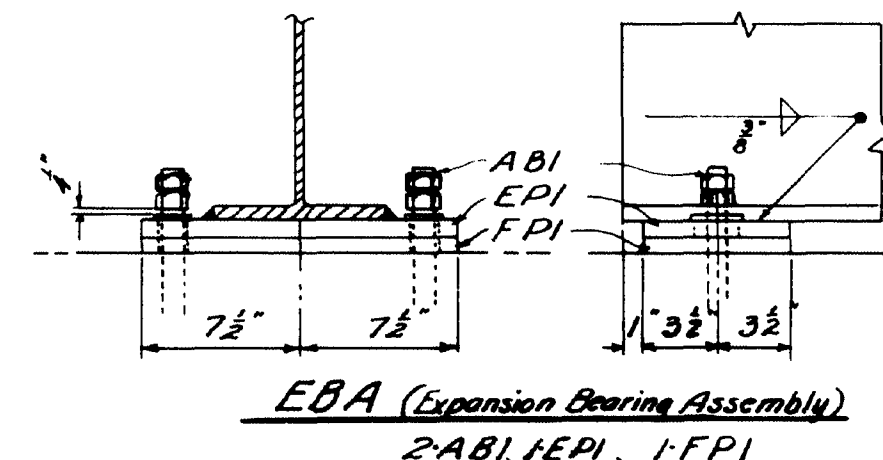


Mark	Description	Length	Number	Shop Work Rep'd
G1	21WF62	83'7"	2	None
G2	21WF62	83'7"	2	None
G3	21WF62	84'2"	1	None
G4	21WF62	84'2"	2	None
G5	21WF62	84'2"	1	None
PI	R5.3/8 (Part D1 & D2)	1'6"	72	None
CI	10U20.0 (Part D1 & D2)	5'11 1/2"	36	None
FPI	R7.3/4 (Part EBA & FBA)	1'3"	40	As shown
EPI	R7.3/4 (Part EBA)	1'3"	24	As shown
ABI	1" Anchorball (Part ABI & FBA)	1'2"	64	As shown
AI	L3 1/2 x 2 1/2 x 3/8	0'8"	24	None

Loading H15-44  
Specifications: State Highway Commission  
Standard Specifications, Revision of May 1953.



Note: Furnish with 2 hex nuts  
& 1 R washer 1 3/4 x 1/2 x 2 1/2



SECTION CC

DESIGN - RISSEL  
TRACE - SAVAGE  
CHECK - *[Signature]*

BRIDGE - 3312

STATE HIGHWAY COMMISSION  
BRIDGE DIVISION

**VARNEY BRIDGE**  
OVER  
**GREAT WORKS RIVER**  
IN THE TOWN OF  
**SOUTH BERWICK**  
**YORK COUNTY**

STRUCTURAL STEEL DETAILS  
SHEET 5 OF 5 AUGUSTA, MAINE MAY 1954

59-100

