



STATE OF MAINE
 DEPARTMENT OF TRANSPORTATION
 16 STATE HOUSE STATION
 AUGUSTA, MAINE 04333-0016

Janet T. Mills
 GOVERNOR

Bruce A. Van Note
 COMMISSIONER

August 1, 2025
 Subject: Woodland Fish Passage
 WIN: PH20250514WFP
 Location: **Baileyville**
Amendment No. 13

Dear Sir/Ms.:

REMOVE, select sheets of “Exhibit B Design Plans” and dated May 13, 2025, and **REPLACE** with the attached revised sheets of “Exhibit B Design Plans” dated August 1, 2025. Revised sheets are listed in the Drawing Updates table below, and updates are clouded for visibility.

Revisions to S-231 are associated with the response to Question 197 of Amendment No. 12.

Corrections to M-115 are not directly related to RFI responses that have been provided but were identified during evaluation of the questions.

Drawing Updates		
Drawing No.	Title	Exhibit
S-231	Fish Lift Tower Framing Sections & Details	B-3
M-115	Fish Lift Hopper Details	B-4

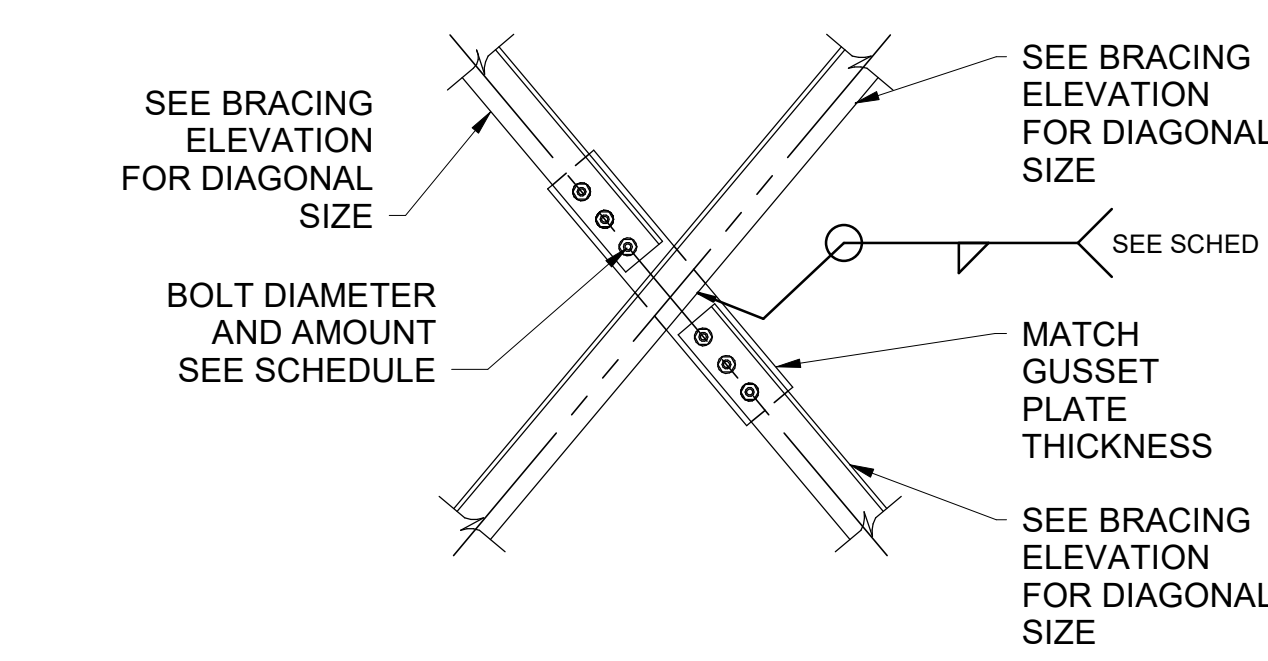
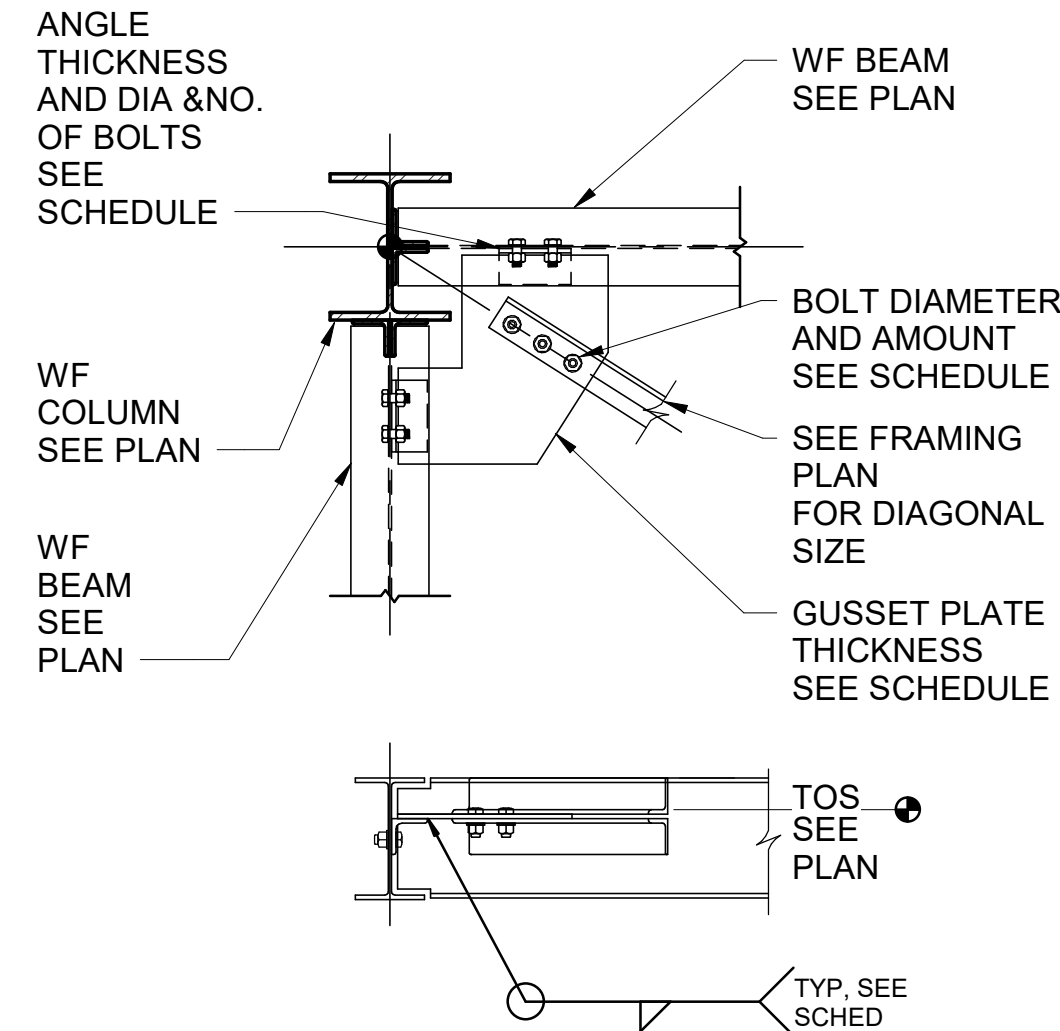
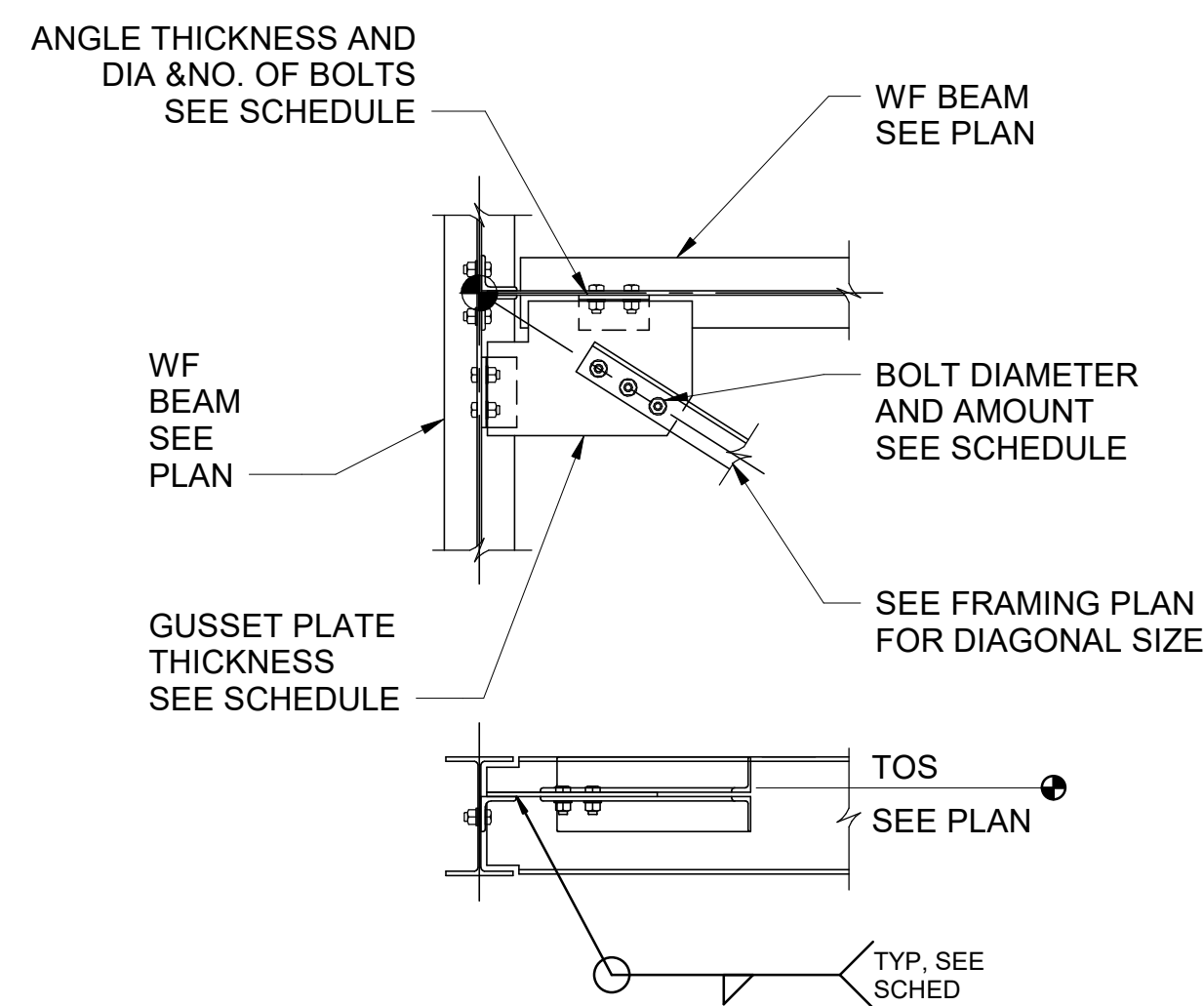
The following has been added or revised:

The Remove and Replace dates noted in the first paragraph of Amendment 12 were incorrectly reported and shall be revised to May 13, 2025, and July 31, 2025, respectively.

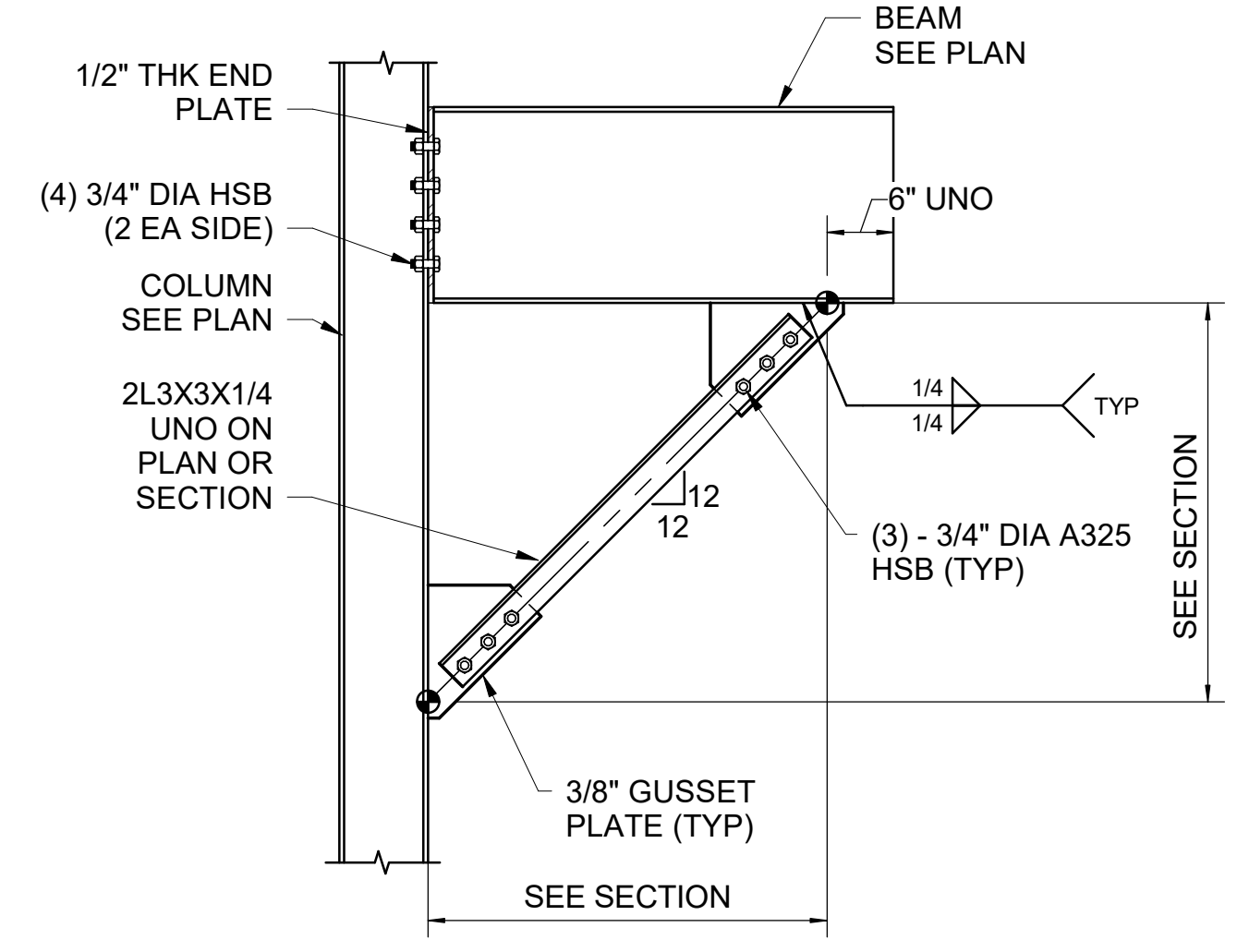
Consider these changes and information prior to submitting your bid on **August 6, 2025**.

Sincerely,

George M. A. Macdougall P.E.
 Contracts & Specifications Engineer



CONNECTION SCHEDULE					
BRACE SIZE	BOLT DIA	ROWS OF BOLTS	BOLTS PER ROW	GUSSET THICKNESS	WELD SIZE
2L4X3X1/4	3/4"	1	3	MATCH T&B CONN	1/4"
2L6X4X3/8	3/4"	2	2	MATCH T&B CONN	1/4"



TYP KNEE BRACE DETAIL
SCALE: 3/4" = 1'-0"

BRACE TO GUSSET & GUSSET TO ANGLES CONNECTION SCHEDULE					
BRACE SIZE	BOLT DIA	ROWS OF BOLTS	BOLTS PER ROW	GUSSET THICKNESS	WELD SIZE
L4X4X1/4	3/4"	1	3	3/8"	1/4"
2L4X3X1/4	3/4"	1	3	3/8"	1/4"
2L6X4X3/8	3/4"	2	2	3/8"	1/4"

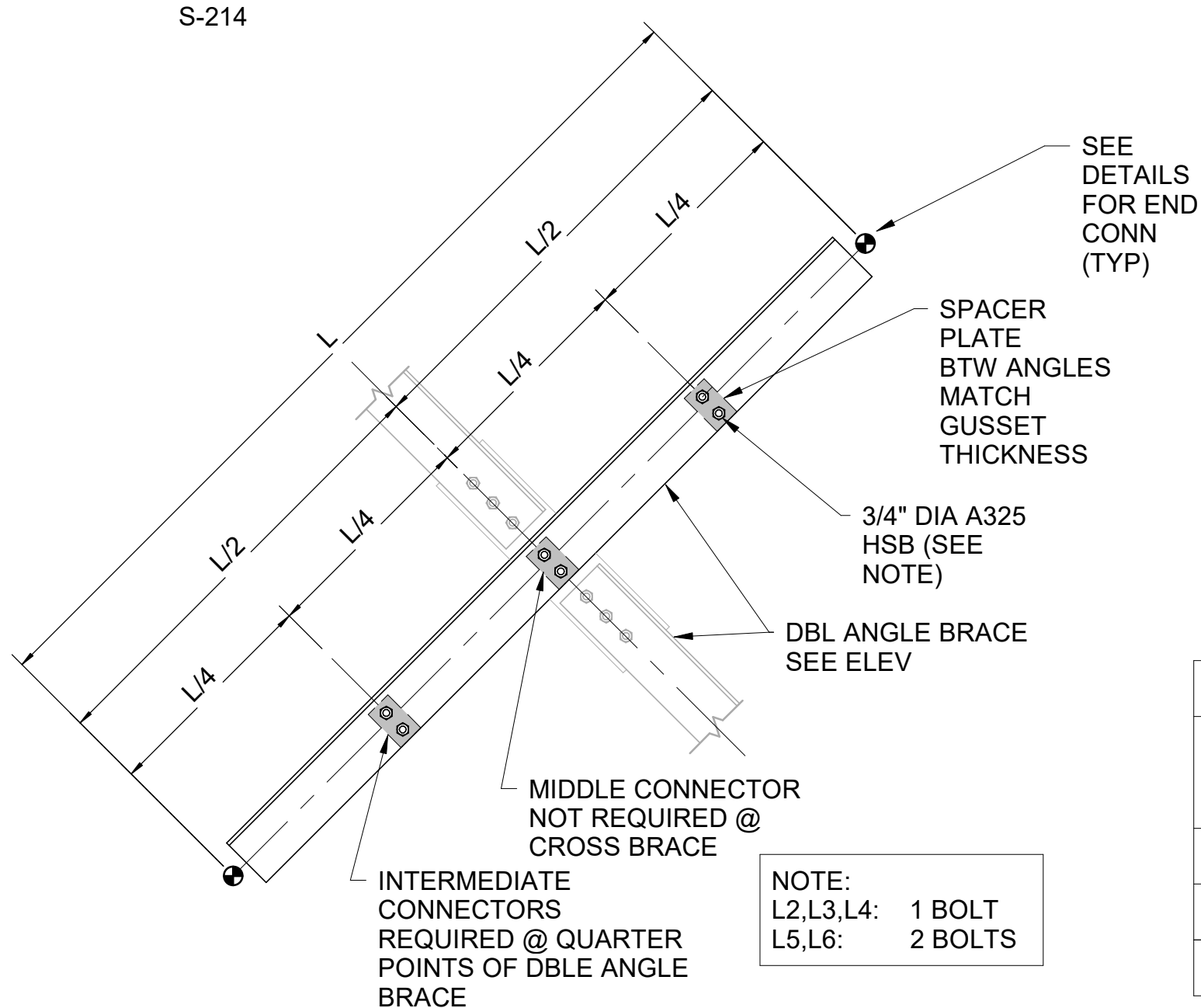
BRACE TO GUSSET & GUSSET TO ANGLES CONNECTION SCHEDULE					
BRACE SIZE	BOLT DIA	ROWS OF BOLTS	BOLTS PER ROW	GUSSET THICKNESS	WELD SIZE
L4X4X1/4	3/4"	1	3	3/8"	1/4"
2L4X3X1/4	3/4"	1	3	3/8"	1/4"
2L6X4X3/8	3/4"	2	2	3/8"	1/4"

ANGLES TO BEAM CONNECTION SCHEDULE			
BRACE SIZE	BOLT DIA	NO. OF BOLTS	ANGLE THICKNESS
L4X4X1/4	3/4"	2	5/16"
2L4X3X1/4	3/4"	2	5/16"
2L6X4X3/8	3/4"	2	5/16"

ANGLES TO BEAM CONNECTION SCHEDULE			
BRACE SIZE	BOLT DIA	NO. OF BOLTS	ANGLE THICKNESS
L4X4X1/4	3/4"	2	5/16"
2L4X3X1/4	3/4"	2	5/16"
2L6X4X3/8	3/4"	2	5/16"

1 HORIZ BRACE CONN DETAIL
SCALE: 3/4" = 1'-0"

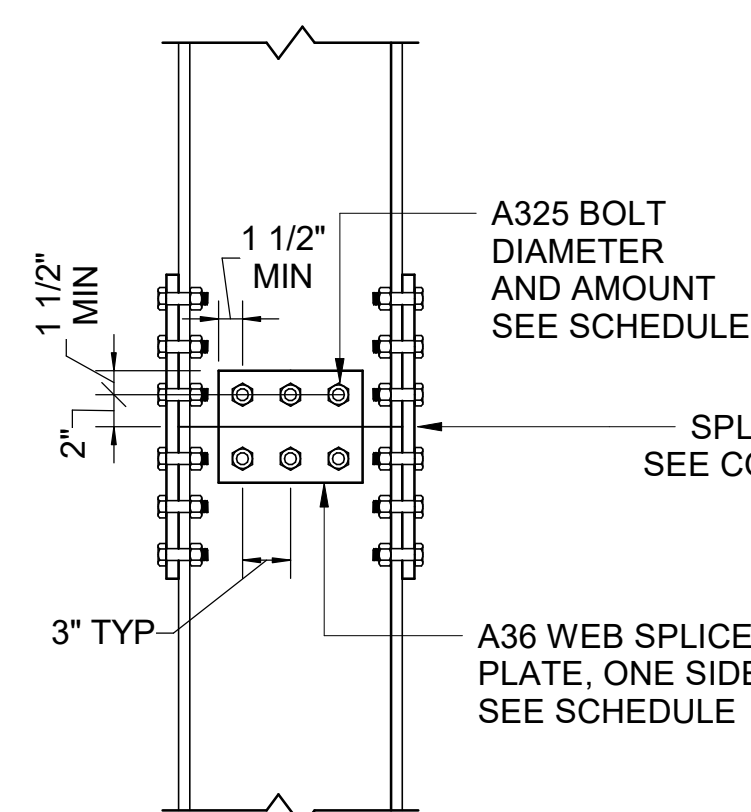
S-212
S-213
S-214



TYP DBLE ANGLE BRACE INT CONNECTOR DETAIL
SCALE: 3/4" = 1'-0"

2 HORIZ BRACE CONN DETAIL
SCALE: 3/4" = 1'-0"

S-212
S-213
S-214



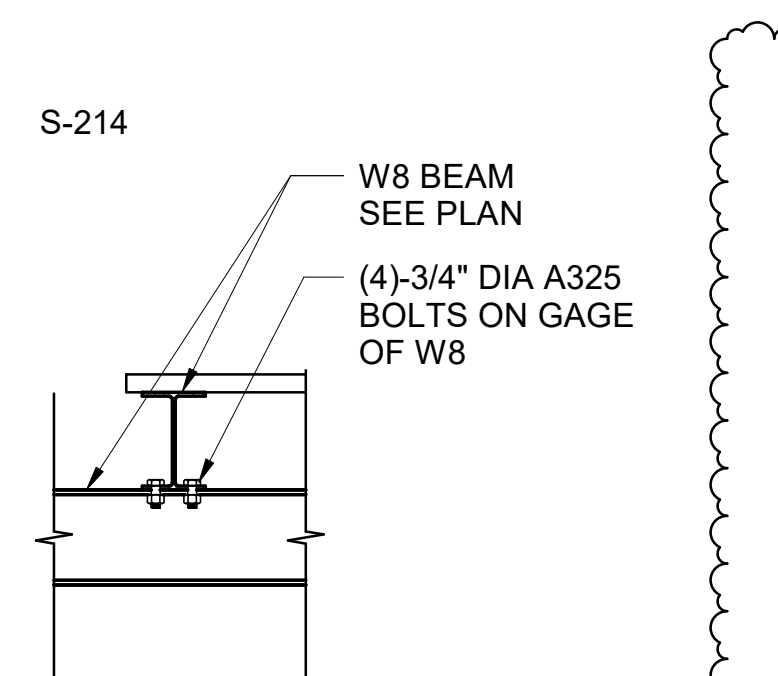
COLUMN SPLICE DETAIL
SCALE: 1" = 1'-0"

WEB PLATE CONNECTION SCHEDULE				
COLUMN SIZE	WEB PLATE THICKNESS	BOLT DIA	ROWS OF BOLTS PER SIDE	BOLTS PER ROW
W12X58	3/8"	3/4"	1	3
W14X90	1/2"	3/4"	1	3
W21X101	1/2"	3/4"	1	6

FLANGE PLATE CONNECTION SCHEDULE					
COLUMN SIZE	FLG PLATE THICKNESS	FLG PLATE WIDTH	BOLT DIA	ROWS OF BOLTS PER SIDE	BOLTS PER ROW
W12X58	5/8"	10"	3/4"	3	2
W14X90	3/4"	12"	3/4"	3	2
W21X101	7/8"	10"	3/4"	4	2

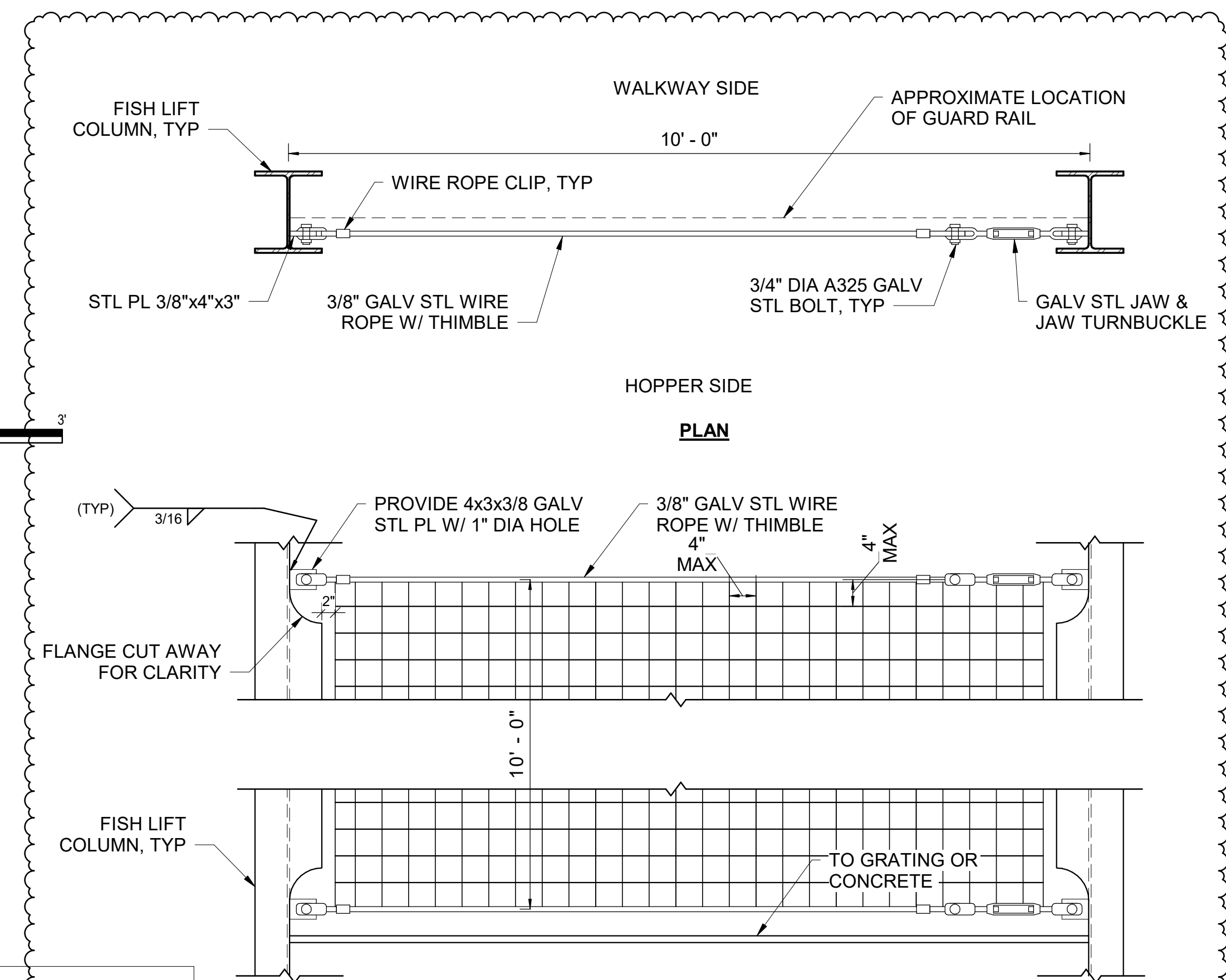
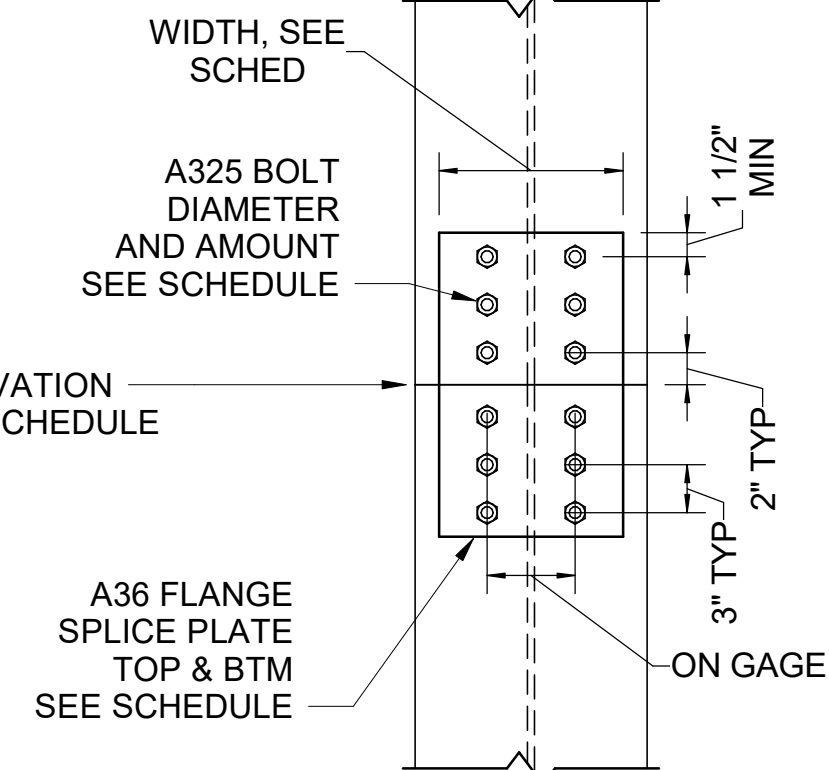
3 HORIZ DOUBLE ANGLE BRACE DETAIL
SCALE: 3/4" = 1'-0"

S-213



8 SECTION
SCALE: 3/4" = 1'-0"

S-211



WIRE MESH DETAIL
SCALE: 3/4" = 1'-0"

- PROVIDE WIRE MESH WITH MAX 4" SPACING BETWEEN GRIDS:
- B&C, C&D, D&E ALONG GRIDS 2 & 3 ABOVE TOP OF CONCRETE EL 110.0'
 - D&E ALONG GRID 2 ABOVE TOP OF GRATING EL 122.0'
 - B&C, C&D, D&E ALONG GRID 3 ABOVE TOP OF GRATING EL 122.0'
 - D&E ALONG GRID 2 ABOVE TOP OF GRATING EL 146.0'
 - C&D, D&E ALONG GRID 3 ABOVE TOP OF GRATING EL 146.0'
 - B&C ALONG GRID 3 ABOVE TOP OF GRATING EL 149.0'



ISSUED FOR BID
NOT FOR CONSTRUCTION
MAY 2, 2025

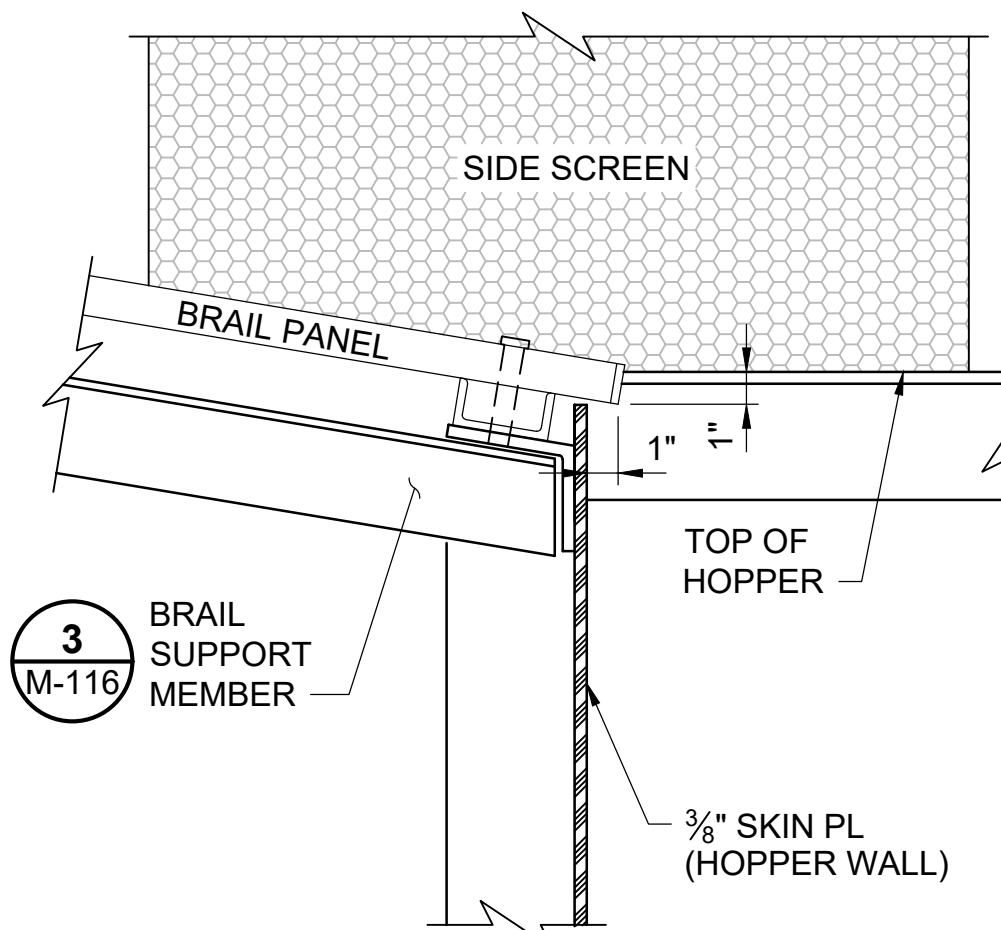
REVISION	DESCRIPTION OF ISSUE / REVISION	REVISED BY
5/2/2025	ISSUED FOR BID	M.GRAESER

VERIFY SCALE
BAR IS ONE INCH ON ORIGINAL DRAWING
IF NOT ONE INCH ON THIS SHEET, ADJUST SCALES ACCORDINGLY

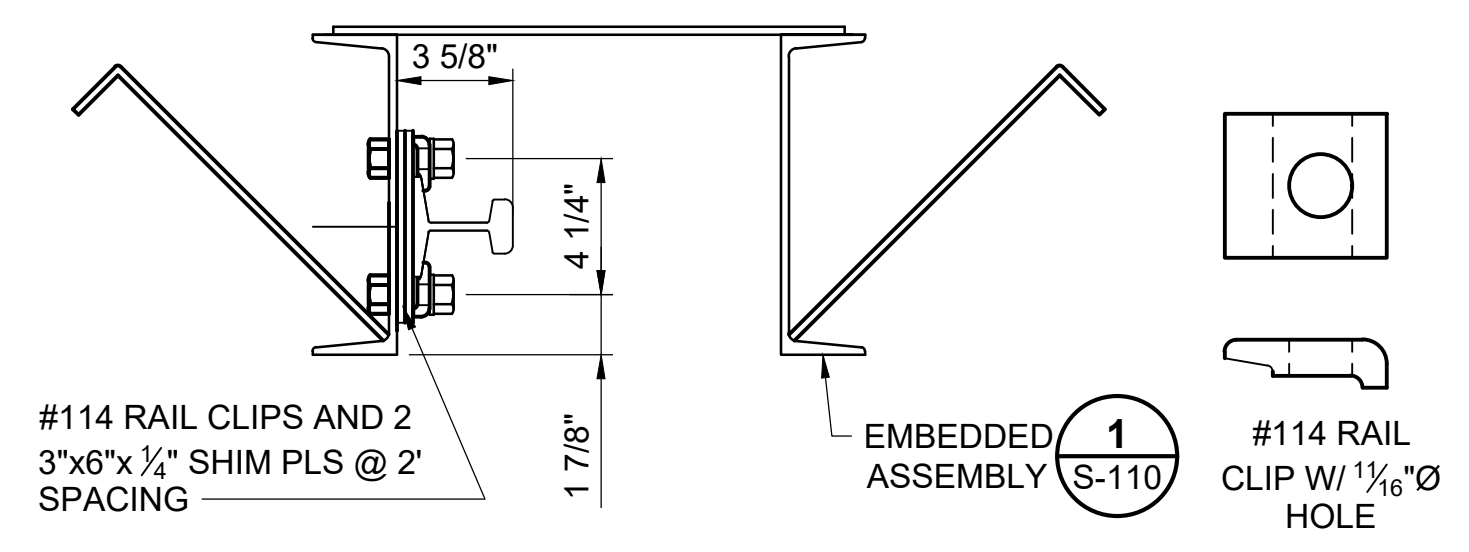
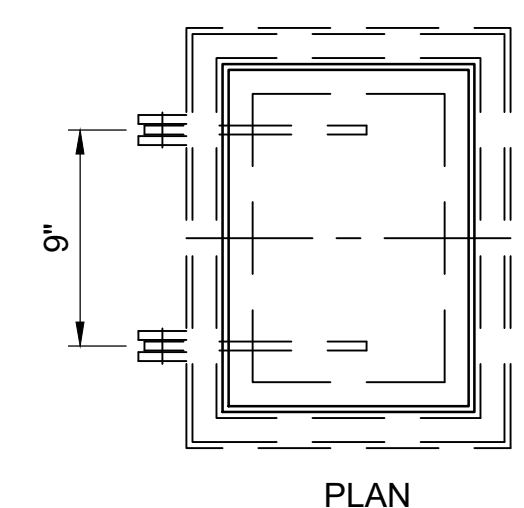
WOODLAND FISH LIFT PASSAGE-DESIGN
MAINE DEPARTMENT OF MARINE RESOURCES

FISH LIFT TOWER
FRAMING SECTIONS & DETAILS

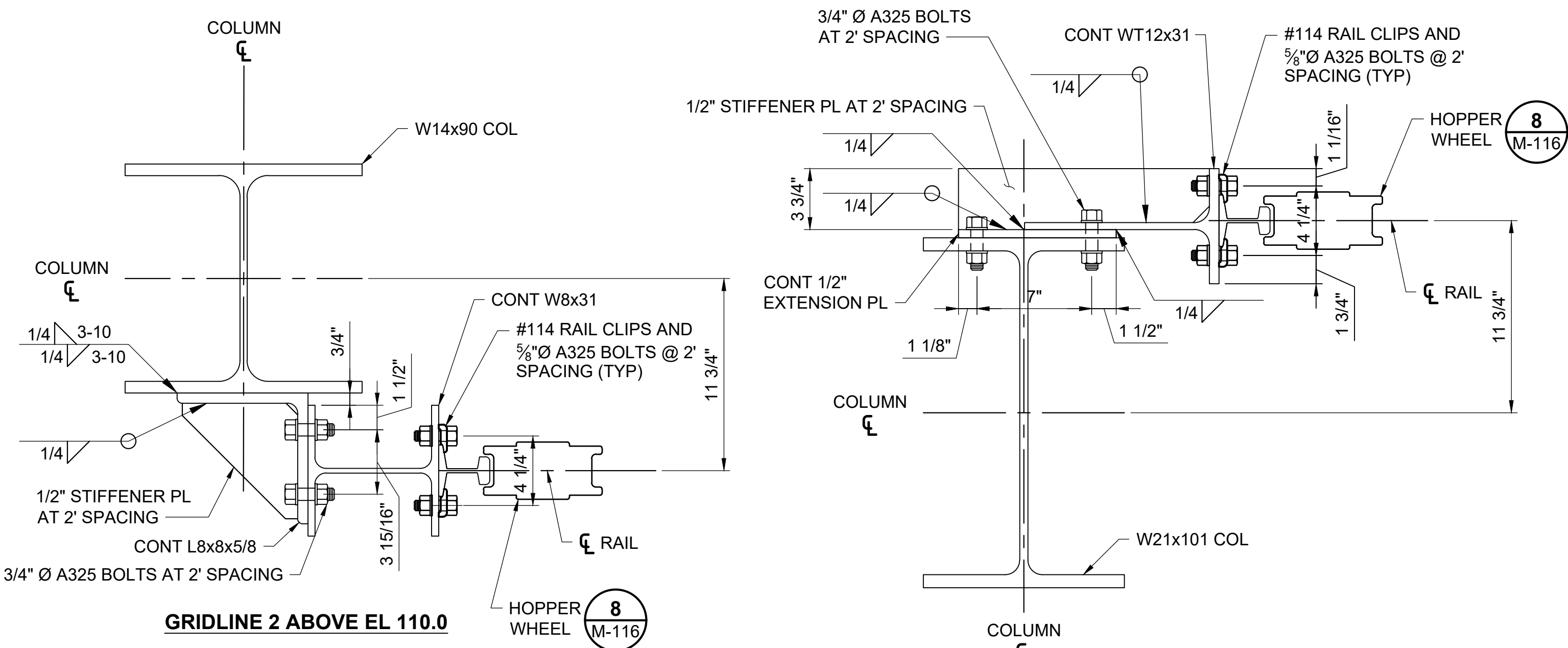
PROJECT:	16667
DRAWN BY:	D.SALDARRIAGA
DESIGNER:	C.MODESTO
APPROVED BY:	M. GRAESER
SHEET:	143 OF 240
DRAWING:	S-231



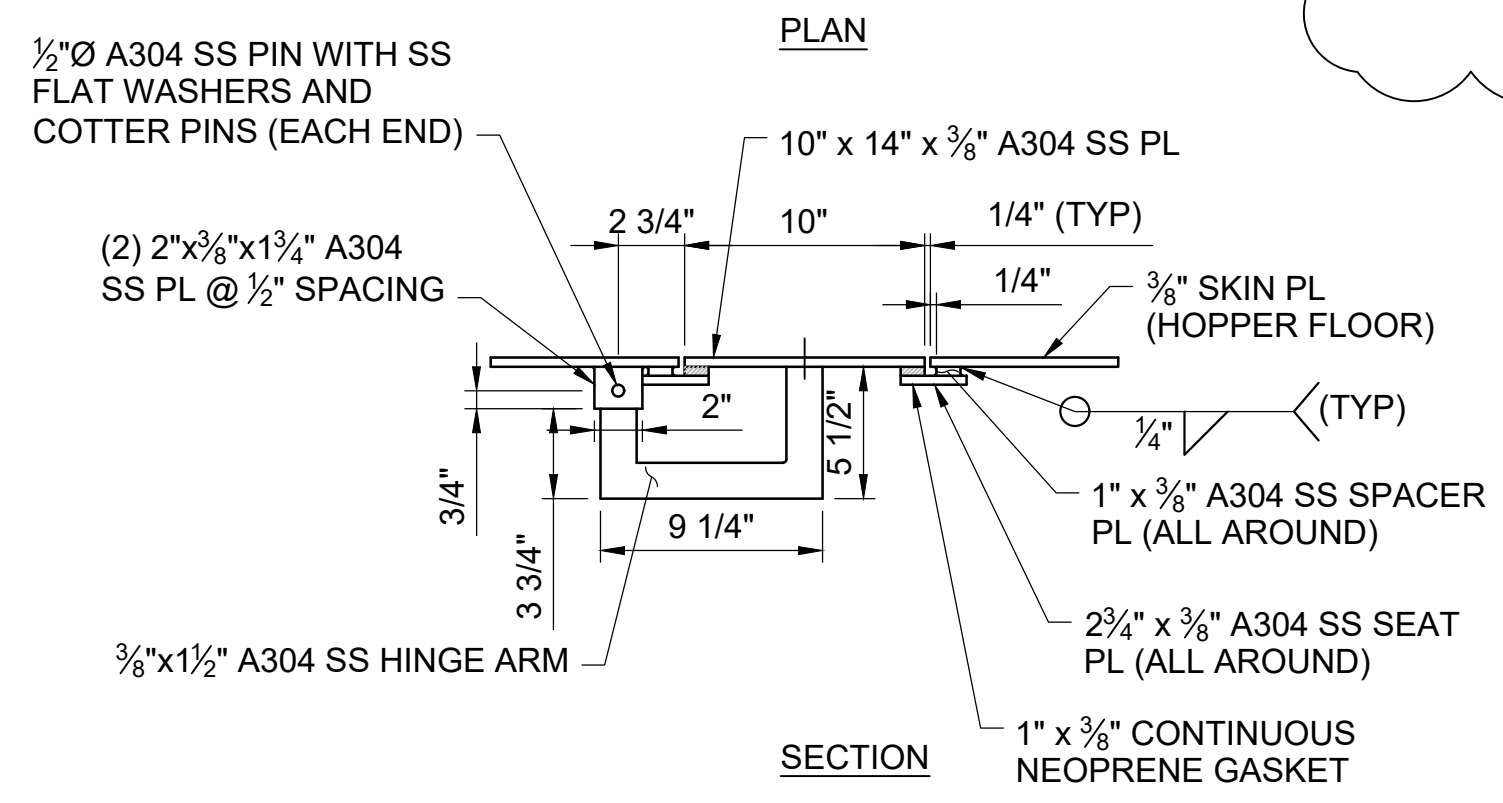
1 BRAIL TO HOPPER DETAIL
M-110 SCALE: 2" = 1'-0"



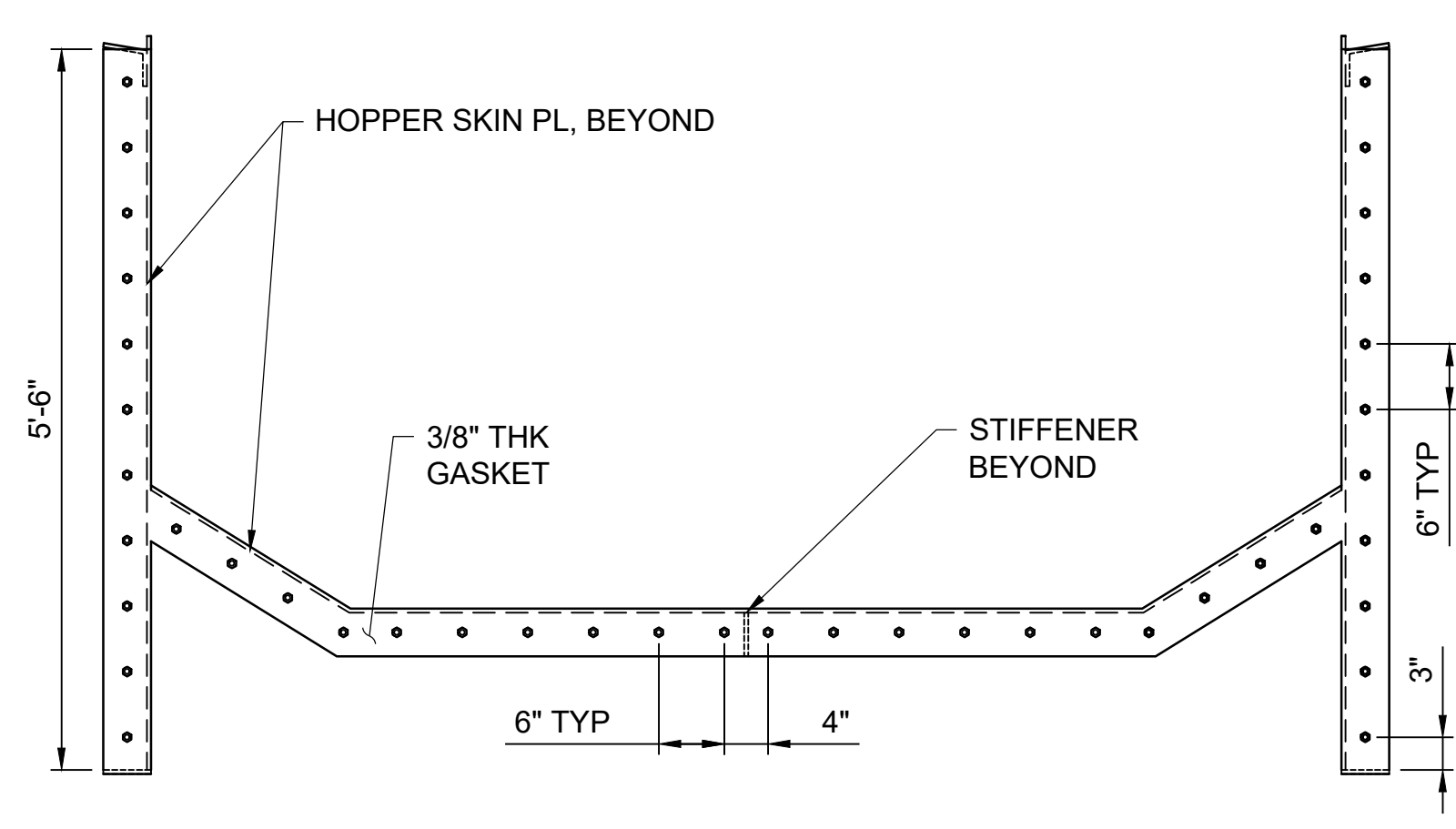
BELOW EL 110.0



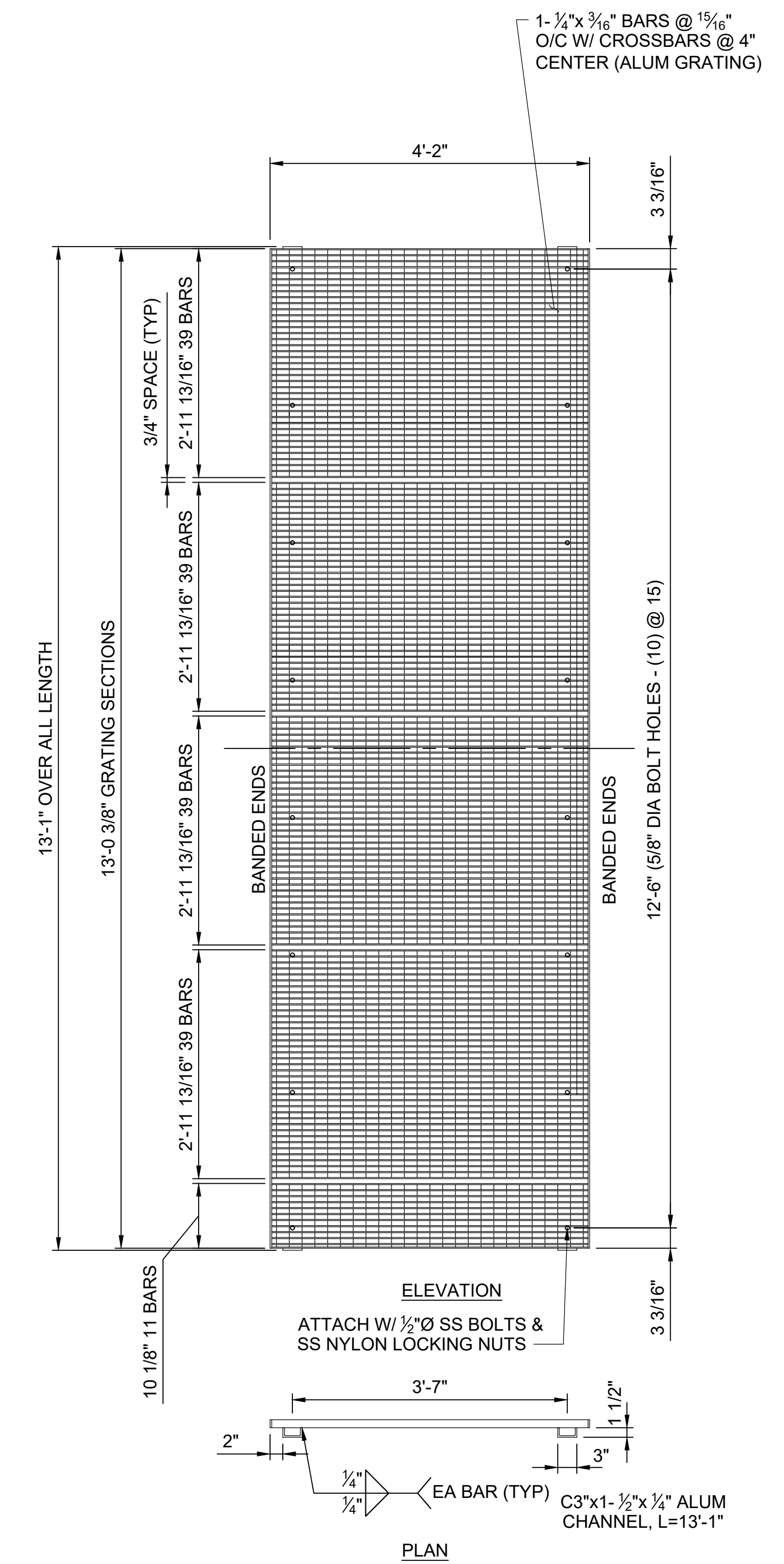
2 ASCE 30 LB RAIL CONNECTION DETAILS
M-110 SCALE: 2" = 1'-0"



3 FLOOR FILL PORT
M-111 SCALE: 1 1/2" = 1'-0"



5 GASKET DETAIL
M-110 SCALE: 3/4" = 1'-0"



4 BRAIL DETAIL (2 PANELS REQUIRED)
M-110 SCALE: 3/4" = 1'-0"



ISSUED FOR BID
NOT FOR CONSTRUCTION
MAY 2, 2025

REVISION	DESCRIPTION OF ISSUE / REVISION	REVISED BY
5/2/2025	ISSUED FOR BID	M. GRAESER

VERIFY SCALE
BAR IS ONE INCH ON ORIGINAL DRAWING
IF NOT ONE INCH ON THIS SHEET, ADJUST SCALES ACCORDINGLY

WOODLAND FISH LIFT PASSAGE DESIGN
MAINE DEPARTMENT OF MARINE RESOURCES

FISH LIFT HOPPER DETAILS

PROJECT:	16667
DRAWN BY:	C. HAGLER
DESIGNER:	A. MENGERT
APPROVED BY:	M. GRAESER
SHEET:	215 OF 240
DRAWING:	M-115