



JANET T. MILLS
GOVERNOR

STATE OF MAINE
DEPARTMENT OF MARINE RESOURCES
21 STATE HOUSE STATION
AUGUSTA, MAINE
04333-0021

CARL J. WILSON
COMMISSIONER

September 23, 2025
Subject: Woodland Fish Passage
WIN: PH20250514WFP2
Location: **Baileyville**
Amendment No. 3

Dear Sir/Ms.:

The following has been revised or added:

“Woodland Fish Passage Bidders Conference Agenda” with the agenda topics, summarized minutes, and questions and answers covered during the optional virtual bidders’ conference on September 17, 2025, is attached with this Amendment No. 3. The agenda also encloses the Verdantas project overview PowerPoint presentation slides and rendezvous location map for the upcoming Site Walk on September 30, 2025.

Please consider these changes and the provided information before submitting your bid on **October 8, 2025**.

Sincerely,

Sean Ledwin

Sean Ledwin
Director, Bureau of Sea Run Fisheries and Habitat
Maine Department of Marine Resources

Bidders' Conference

Date	September 17, 2025		Time	9:00-11:00 AM Eastern
Location	Online Only		Format(s)	Microsoft Teams
Project	Woodland Fish Passage System	Project No.	PH20250514WFP2	
Purpose	Review of the revised project and RFP for construction bidders			
Site Link	PH20250514WFP2, Baileyville - Region 4 Maine Department of Transportation			
Enclosed	1) Verdantas PowerPoint Presentation Slides 2) Site Walk Location Map			
Attendees	Sean Ledwin (DMR)		Abigail Armbruster (Cianbro)	
	Casey Clark (DMR)		Brenda Nichols (Cianbro)	
	John McAuliffe (WPLLC)		Bryce Waddell (Cianbro)	
	Steve Strout (WPLLC)		Garrett Fish (Cianbro)	
	Greg Allen (Verdantas)		Joe Orlando (Cianbro)	
	Mark Graeser (Verdantas)		Linc Denison (Cianbro)	
	Chelsea Herrera (Verdantas)		Matt Hebert (Cianbro)	
	Cliff Thornberry (American Steel Fabricators)		Michael Romano (Cianbro)	
	Tom Rumpf (Atlantic Bridge & Engineering)		Art Cavanagh (Reed & Reed)	
	John Scheithe (Ballard Marine Construction)		Dustin Littlefield (Reed & Reed)	
	Garrick Frost (Bancroft Contracting)		John Ware (Sullivan & Merritt Constructors)	
	Eric Fogg (CEM Maine)		Lucas Vanadestine (Sullivan & Merritt Constructors)	

Agenda Outline

Topic	Presenter(s)
Stakeholder Overview & Introductions	Sean Ledwin, Chelsea Herrera
Revised Project Overview	Sean Ledwin, Greg Allen, Chelsea Herrera
RFP Overview and Bid Process	Chelsea Herrera
Award and Contract Processes	Chelsea Herrera, Sean Ledwin
Site Walk Review	Chelsea Herrera

Stakeholder Overview & Introductions

Core Team

- ▶ Maine Department of Marine Resources (DMR) – Contract Administrator, “Department”
 - Sean Ledwin – Project Manager
- ▶ Maine Department of Transportation (DOT) – RFP/Bidding Administrator
- ▶ Woodland Pulp LLC (WPLLC) – Property Owner
- ▶ Verdantas – Engineer, Prime Consultant with the following subconsultants:
 - Electrical Consultants, Inc. (ECI) – Electrical & controls engineering design
 - Kleinschmidt Associates (KA) – Intake rack & rake engineering design
 - Providence Infrastructure Consultants (PIC) – Piping engineering design
 - On Point Construction Services (On Point) – Construction management

Revised Project Overview

DMR Project Introduction

- ▶ Project purpose, DMR’s role with contract and project management, federal funding sources
 - This Project is part of a public-private partnership to restore fish in the St. Croix River and one of three main projects going on in the watershed:
 1. Milltown Dam was removed over the last two years and is complete
 2. This Project for fish passage improvements at Woodland
 3. A planned project at Grand Falls also owned by Woodland Pulp LLC (to be issued for bid in the future)
 - ▶ The overall goal is to restore six anadromous fish to the river system, which is recognized nationally as one of the highest priority efforts with highest potential for River Herring (Alewife and Blueback Herring). A large response is expected from those species.
 - DMR has secured the funding for construction and will execute and manage the contract; Sean Ledwin is the Project Manager
 - Federally funded project with a lot of different federal sources, the largest of which is from NOAA. Funding has also been collected from USFWS, National Fish & Wildlife Foundation, and via a Congressionally Directed funding request from Senator Collins. Many awards are publicly available information, but bidders are advised caution in trying to guess the overall Project budget based on award amounts found publicly as not all funding awarded can be applied to construction and is applied for science, staffing, construction support, or indirect costs for the State of Maine.
 - ▶ Given the funding sources, there are unique aspects to this project. Differences need to be captured in the bids. Please submit RFIs for questions.
 - Project is exempt from BABA requirements
 - Maine has a State tax refund provision applicable to this project

Verdantas PowerPoint Presentation

- ▶ Refer to Enclosure 1 for presentation slides with key notes

Site and Working Considerations

- ▶ Construction occurs within the footprint of an active hydroelectric station, paper mill, and dam with spillway features
- ▶ Bidders shall refer to language included in Division 100 regarding coordination requirements; adherence to safety procedures on Woodland Pulp LLC’s property; and the safe and reliable operation of the dam, hydroelectric station, and mill equipment
- ▶ Bidders are also advised to heed City of Baileyville sensitivity and constraints regarding heavy construction traffic

Project Revisions & Redesign Approach

- ▶ Section 1 – Basis of Award
 - Fish Ladder removed from the construction scope
 - ▶ Refer to “Not in Contract” designations on the design drawings
 - ▶ New pricing item for Construction Access
 - ▶ New pricing item for Redesign Consultation & Constructability Reviews
 - Impacted structures, such as AWS Pipe 2 and Downstream Bypass Pipe 1, will be redesigned in consultation with the Contractor
- ▶ Section 2 – Bid Supplement
 - Intake work designed by Kleinschmidt (Exhibit B-6) and associated Verdantas downstream bypass features
 - Awarded at DMR’s option only
- ▶ Section 3 – Alternate Access
 - The incremental increase in cost above each Bidder’s intended means of access to construct the prefabricated bridge and access road as designed
 - Awarded at DMR’s option only

RFP Overview and Bid Process

Timeline & Key Contract Dates

Description	Date	Reference Document
Bids Due:	October 8, 2025	Notice to Contractors
Notice of Intent to Award:	Within 30 days of bids due	Exhibit A – 103.4
In-Water Work Period:	Unrestricted	Exhibit A – 101.2
Fish Passage Operational (Tied to Suppl. LDs):	Subject to change	Exhibit A – 107.8
Final Completion (Tied to LDs):	December 31, 2027	Contract Bid Book

Supplemental Liquidated Damages

The date beyond which Supplemental Liquidated Damages apply per Section 107.8 of Exhibit A – Division 100 General Conditions remains unchanged (May 1, 2028) from the prior bid opportunity and requires revision. Functional testing occurring ahead of Spring 2028 migration season is desirable, so revisions to the Contract termination and Supplemental Liquidated Damages dates are being considered and would be issued by Amendment.

RFP Contents

- ▶ Notice to Contractors
- ▶ Bid Book
- ▶ Price Component Schedule (refer to Amendment 1)
- ▶ Exhibits to the Contract:
 - A – Division 100 General Conditions
 - Refer to the revision bar identifying changes under Section 103.1.3
 - B – Design Plans
 - All exhibits have been revised for not-in-contract separation of the fish ladder and other impacted components
 - Changes have been incorporated per responses to prior RFIs
 - Exhibit B-6, KA’s design, also revises the raker manufacturer and includes select changes
 - C – Design Specifications (refer to Amendment 1)
 - D – Design Reference Documents
 - D-2 is new and was used as part of the basis for electrical & controls design
 - Bidders shall generally adhere to Woodland standard practices, but refer to the Design Plans & Specifications for controlling requirements and submit RFIs if conflicts exist
 - D-3 contains revised estimated quantities that are direct design takeoffs
 - D-4 brings relevant RFI responses from the prior bid opportunity; note added clarification in red text for Question 116
 - D-5 describes available drawings, photos, LiDAR data - files are too large for DOT web posting
 - E – Permits
 - F – Woodland Safety Procedures
 - G – Woodland General Requirements
 - H – Federal Award Conditions

Bid Amendments

- ▶ Amendment 1
 - Corrected piping mix-up in the Payment Spec 01 20 00 and Price Component Schedule
 - Please refer to the reissued Specifications and Price Component Schedule

Bidding Process

- ▶ Use of DOT’s Bidding Process
 - Website advertisement, prequalification, questions, RFIs, amendments, and bid submission through DOT processes
 - Paper Bids Only
- ▶ Deviations:
 - E-Mail Courtesy Copy of Bid to DMR
 - Division 100 – General Conditions (Exhibit A)
 - ▶ No use of Special Provisions, revisions made directly within applicable sections
 - Technical Specifications
 - ▶ Refer to Exhibit C for Design Specifications applicable to Verdantas and PIC combined design plans, Exhibits B-1 through B-4
 - ▶ Refer to notes on the drawings for specifications applicable to ECI and Kleinschmidt designs, Exhibits B-5 and B-6 respectively – there are no separate specification documents for these designs
 - ▶ DOT Divisions 200+ are not used except as explicitly referenced in the specifications
 - Prequalification
 - ▶ Additional project experience required; submit through or in addition to DOT prequalification process to both e-mail addresses in the Notice to Contractors
 - ▶ Bidders prequalified in the prior bid opportunity are not required to resubmit

Award and Contract Processes

Bidder Negotiations

- ▶ Maine DMR may exercise its right to negotiate per Section 103.1.3 prior to award

Award

- ▶ Notice of Intent to Award sent by DMR within 30 days of bids due

Contract Offer & Execution

- ▶ The Contract is offered by and executed with the State of Maine through the DMR
- ▶ The apparent successful bidder should assume a period of negotiation and contract approvals that may not align with DOT standard timeframes

Site Walk Details

Date	September 30, 2025	Time	1:00 – 3:00 PM Eastern
Location	144 Main St., Baileyville, ME	RSVP By	12:00 PM on September 23, 2025

Pre-Arrival Requirements

- ▶ Each attendee must complete WPLLC **Contractor Safety Orientation** available at: <https://woodlandpulp.com/contractor-safety/>
 - This training requires creation of a Sine account – new accounts must be activated by WPLLC security at the main gate upon arrival anytime from 12:00-12:45pm
 - Contractor PSM Safety Overview is **not required**
 - Completion of the Contractor Safety Orientation is valid for one year
- ▶ **No photography is permitted** by bidders during the site walk
 - Verdantas and DMR will be issued camera passes to take photos on bidders’ behalf, review with WPLLC for approval, and post to a secure shared location for bidder access

Rendezvous Details

- ▶ Arrive no later than 12:45 PM at the WPLLC administrative building
 - 144 Main Street, Baileyville, ME 04694
 - Park in the flat lot SE of office building
 - Refer to Enclosure 2, Site Walk Map
 - Front door will be staffed to permit attendee entrance
 - Meet in Sprague Conference Room
- ▶ All attendees will be required to sign in and out electronically (see pre-arrival requirements)

Minimum PPE

- ▶ Hard hat
- ▶ Steel or safety toe footwear
- ▶ High visibility vest/clothing
- ▶ Safety glasses

Arrival Coordination

- ▶ Contact John McAuliffe or Steve Strout of WPLLC for day-of coordination:
 - John McAuliffe (c): 207-512-6088
 - Steve Strout (c): 207-214-4628

Tentative Agenda

- ▶ Roll Call & Safety Brief in Sprague Conference Room
- ▶ WPLLC escorted site walk
- ▶ Return to Sprague Conference Room, debrief with Q&A
- ▶ Attendee sign-out and site departure

Q&A for Revised Project PH20250514WFP2

Question: The entire set of drawings and specifications were reissued. Are there major technical changes from last time other than removing the fish ladder?

Response: Mostly cleanup changes were made to address responses to previous RFIs. Those questions have been filtered out of the RFI log provided as Exhibit D-4. Also note the replacement of the Keunz raker with a Muhr machine and select structural updates in Exhibit B-6. Refer to clouding for those updates.

Question: If Bidders intend to use the bridge for construction access, should those costs be entered on the new Section 1 Construction Access line of the Price Component Schedule with costs in Section 3 set to \$0?

Response: Yes, that is correct.

Q&A for Former Project PH20250514WFP

Question: What are the overhead restrictions on the path to the right to the new access road? (East access path)

Response: There is a set of cables off the corner of the building near the “construction access to island” callout that will restrict crane passage (refer to presentation slide 4 or plan sheet G-121). This will be evident during the site walk and is the only height restriction along this path.

Question: Is there a location upstream on mill property for launching barge sections?

Response: Yes. There are a couple of launch spots coming out of the chipyard and also a boat ramp just past the landfill entrance a couple miles up the road.

Question: Are there wage determinations for this project, such as Davis Bacon, given federal funding?

Response: No, there are no Davis-Bacon requirements due to funding sources and authorities. No state prevailing wage requirements either per the State of Maine Department of Labor. This is unique compared to many DOT projects. However, general labor and wage requirements still apply.

Regarding Buy America Build America (BABA) provisions that bidders should review carefully, there are two waivers for this project: one related to a grant received from the Passamaquoddy Tribe, and one broad exemption for manufactured products.

Question: WPLLC, please discuss gate requirements and working hours.

Response: The mill is a 24/7 operation. The Contractor will have access but must establish its own gate and provide security staffing for personnel tracking and site control.

Question: What is the basis of award—low bid?

Response: Yes, low bid.

Enclosure 1 - Verdantas Revised Project Presentation

verdantas

Woodland Fish Passage Project

Virtual Bidders' Conference

September 17, 2025





Flashboard Spillway

Gated Spillway

Hydro Station

Existing Denil Fishway

Substation

Woodland Dam and Powerhouse

Powerhouse flow 3200 cfs nominal capacity

River flow (fishway design operational conditions)

Design low 895 cfs (95% exceedance, June & July)

Normal 2350 cfs (50% exceedance, May & June)

Design high 7620 cfs (5% exceedance, May & June)

Target Fish Passage

Attraction flow 160 cfs (5% of powerhouse)

Primary Target Species

American Shad 165,000

Alewives 26,000,000

Blueback Herring 1,600,000

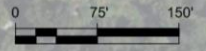
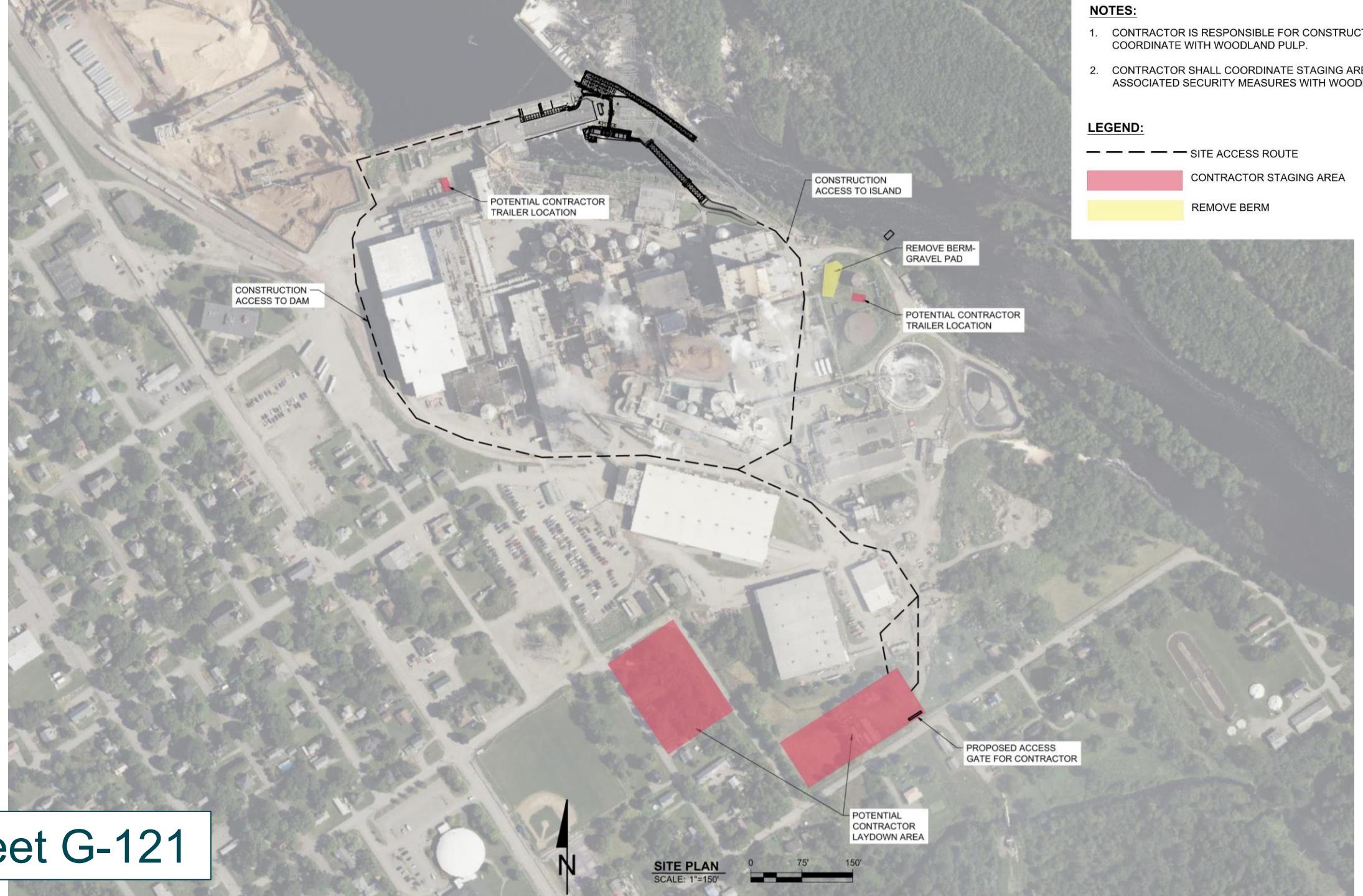


NOTES:

1. CONTRACTOR IS RESPONSIBLE FOR CONSTRUCTION SITE SECURITY. COORDINATE WITH WOODLAND PULP.
2. CONTRACTOR SHALL COORDINATE STAGING AREAS, INCLUDING ASSOCIATED SECURITY MEASURES WITH WOODLAND PULP.

LEGEND:

- SITE ACCESS ROUTE
- [Red Box] CONTRACTOR STAGING AREA
- [Yellow Box] REMOVE BERM



Replace trash rack w/
3/4 inch clears spaced

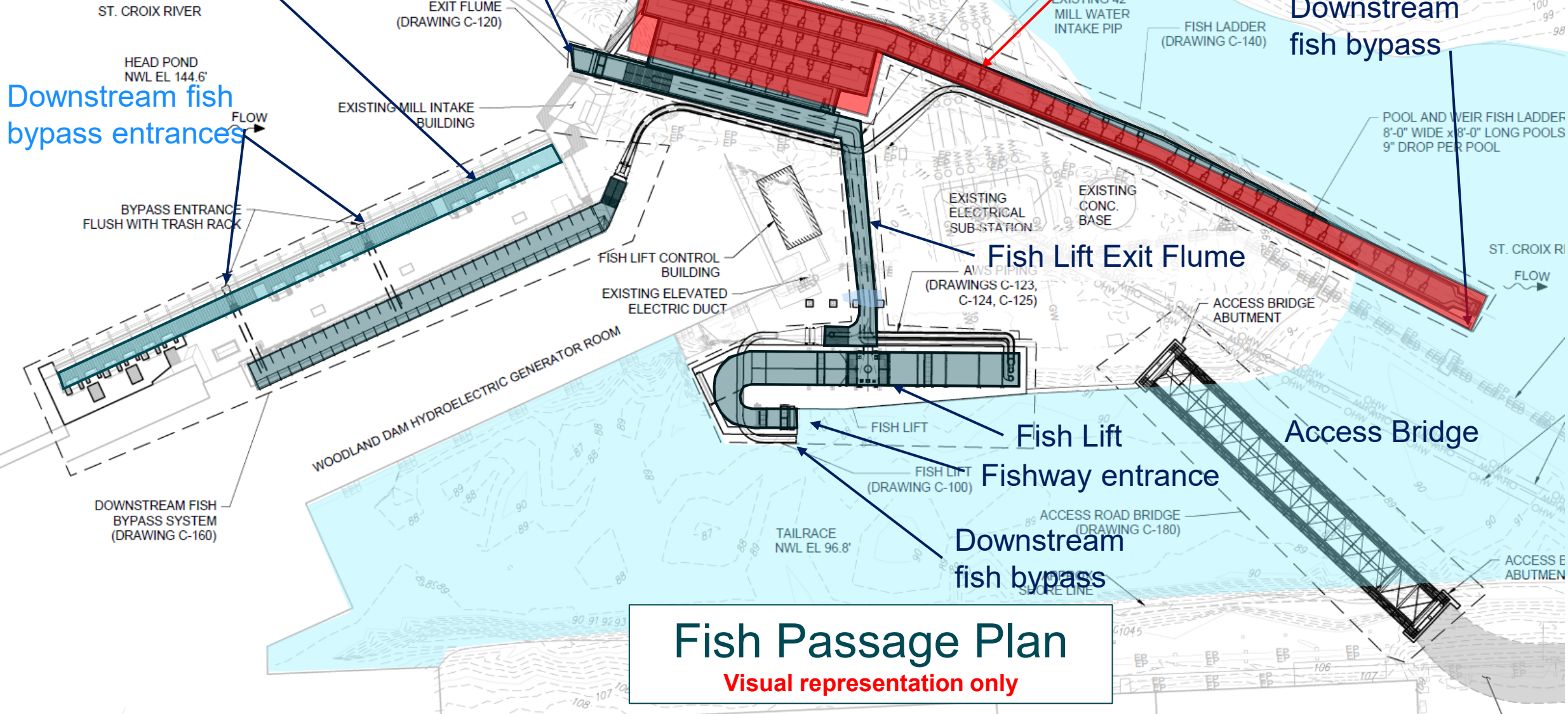
Downstream
bypass entrance/
fish lift exit
channel

Pool & Weir Fish
Ladder removed from
project

Downstream fish
bypass entrances

Downstream
fish bypass

POOL AND WEIR FISH LADDER
8'-0" WIDE x 8'-0" LONG POOLS
9" DROP PER POOL



ST. CROIX RIVER

HEAD POND
NWL EL 144.6'

EXIT FLUME
(DRAWING C-120)

ELEVATED
FISH LIFT EXIT
FLUME, 8' WIDE

EXISTING 42"
MILL WATER
INTAKE PIP

FISH LADDER
(DRAWING C-140)

EXISTING MILL INTAKE
BUILDING

BYPASS ENTRANCE
FLUSH WITH TRASH RACK

FISH LIFT CONTROL
BUILDING

EXISTING ELEVATED
ELECTRIC DUCT

EXISTING
ELECTRICAL
SUB-STATION

EXISTING
CONC.
BASE

Fish Lift Exit Flume

AVS PIPING
(DRAWINGS C-123,
C-124, C-125)

ACCESS BRIDGE
ABUTMENT

WOODLAND DAM HYDROELECTRIC GENERATOR ROOM

FISH LIFT

Fish Lift

Fishway entrance

Access Bridge

DOWNSTREAM FISH
BYPASS SYSTEM
(DRAWING C-160)

FISH LIFT
(DRAWING C-100)

Downstream
fish bypass

TAILRACE
NWL EL 96.8'

ACCESS ROAD BRIDGE
(DRAWING C-180)

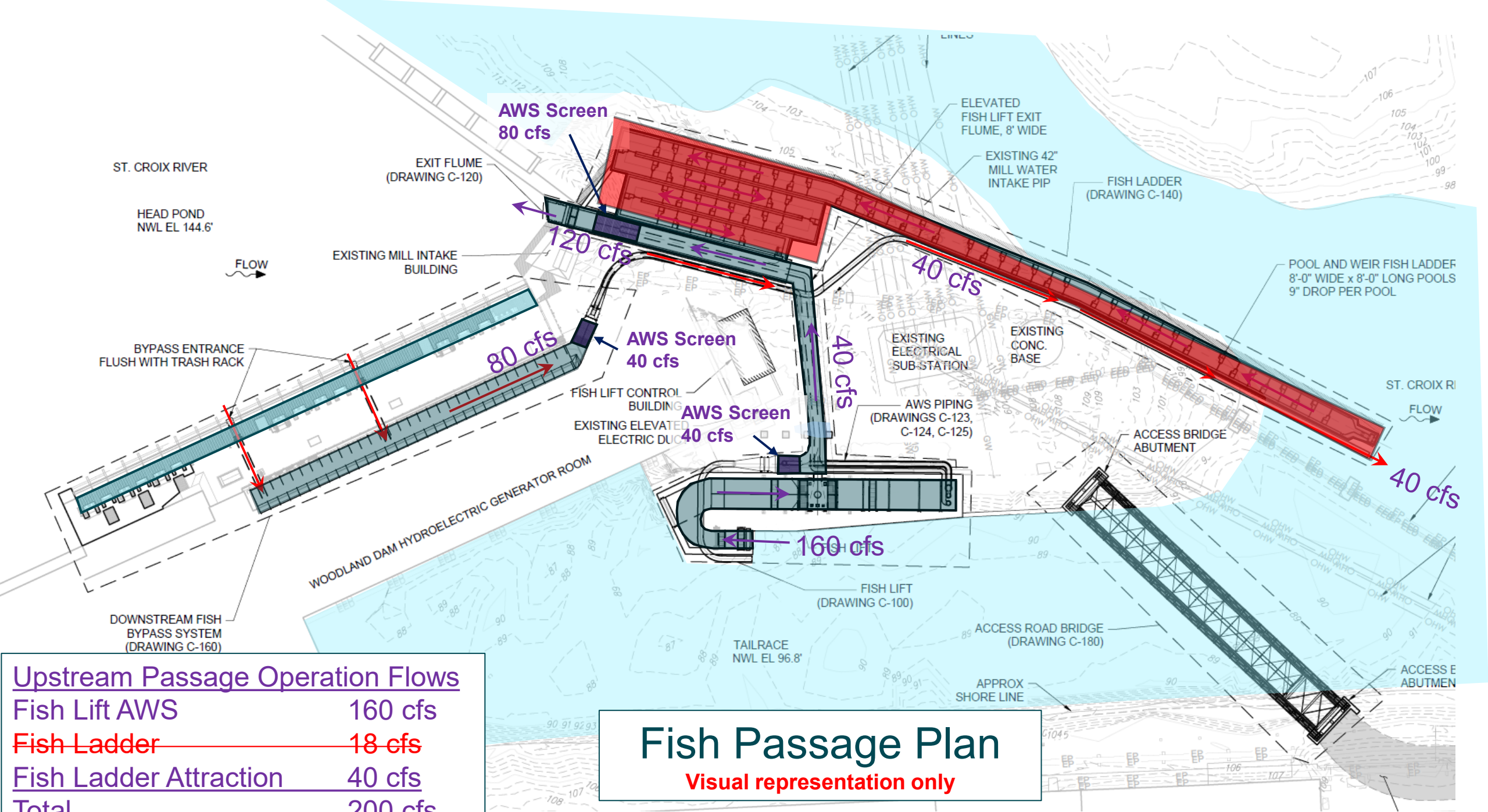
Fish Passage Plan

Visual representation only

ST. CROIX RI

FLOW

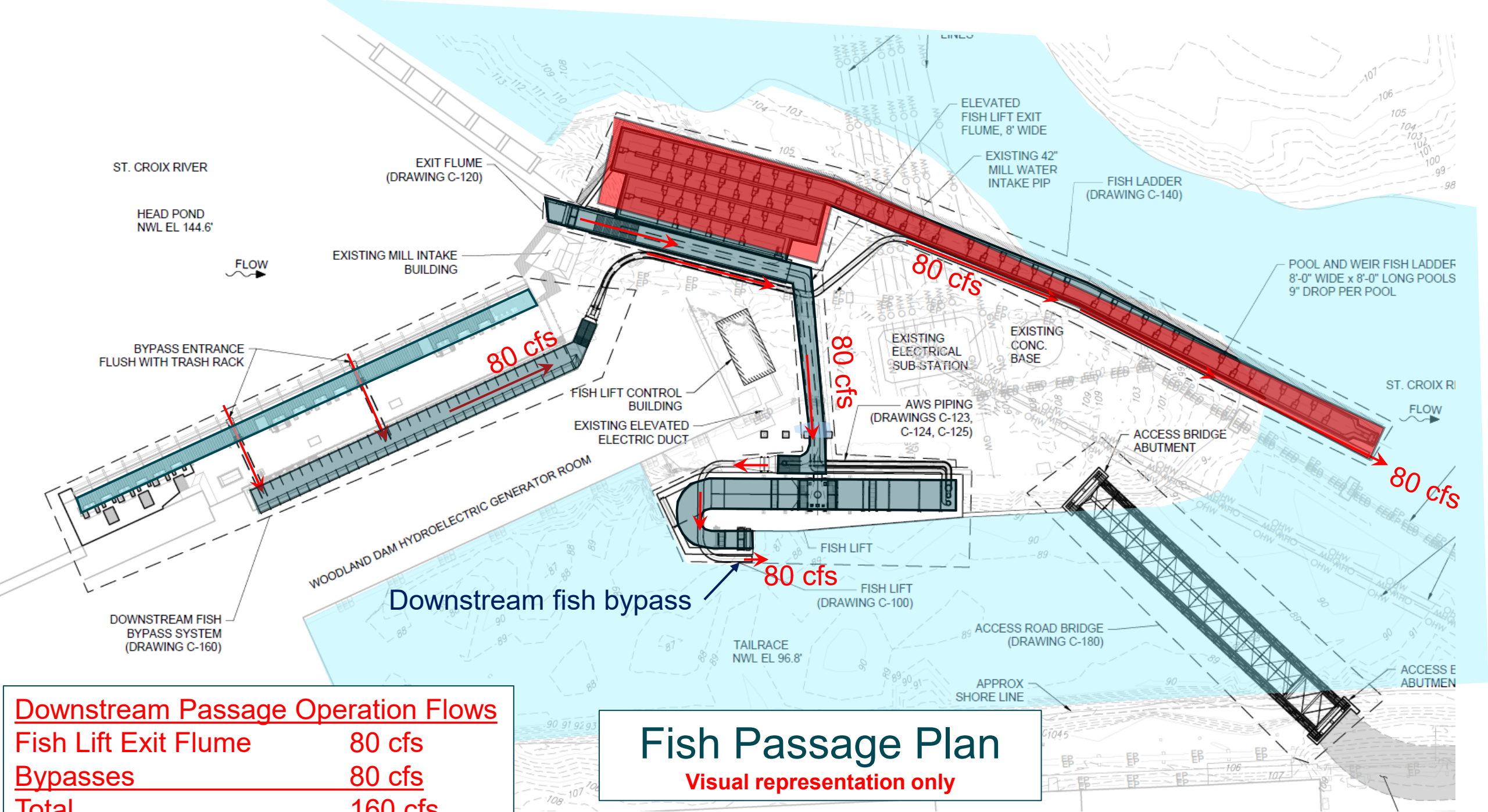
ACCESS E
ABUTMEN



Upstream Passage Operation Flows

Fish Lift AWS	160 cfs
Fish Ladder	18 cfs
Fish Ladder Attraction	40 cfs
Total	200 cfs

Fish Passage Plan
 Visual representation only



Downstream Passage Operation Flows

Fish Lift Exit Flume	80 cfs
Bypasses	80 cfs
Total	160 cfs

Fish Passage Plan
 Visual representation only

verdantas

Thank You

Enclosure 2 – Site Walk Location Map

