

ADDENDUM #2

PROJECT: Town of Boothbay Harbor, Footbridge Rehabilitation Project
DATE: December 2, 2022
ISSUED BY: Alyssa G. Pulver, P.E.
Carmen B. Bombeke, P.E.
MaineDOT WIN: 023807.00

This addendum addresses discussion points brought forth at the pre-bid meeting November 21, 2022. This addendum is hereby made a part of the contract documents.

QUESTION 1 – What is the project budget?

RESPONSE 1 – A preliminary budget of \$1,300,000 - \$1,500,000 was developed previously.

QUESTION 2 – Can the public parking lot at the west end of the footbridge (north side of bridge) be used as a staging area during construction?

RESPONSE 2 – Yes. The Town will coordinate with the contractor regarding the amount of staging area in the parking lot that is required and on snow removal.

QUESTION 3 – Can the construction completion deadline be extended?

RESPONSE 3 – No. The reason for lack of flexibility on the construction completion deadline is related to project funding requirements.

QUESTION 4 – When is the project anticipated to be awarded?

RESPONSE 4 – Bids are due December 13, 2022. The intent is to review the bids and perform any due diligence related to bids received in a timely manner prior to the next Town of Boothbay Harbor Select Board meeting. Unfortunately, due to member availability during the holidays, that meeting (typically held the fourth Monday of the month) has been rescheduled to January 9, 2023. The Town anticipates awarding the contract January 10, 2023. We understand schedule, particularly timely ordering of materials, is critical to achieving the construction completion deadline. Contractors are welcome to make note of the need to have the project awarded by a certain date in order to achieve the project schedule on their bid form.

QUESTION 5 – How are the existing gangway and existing float servicing the public pier (Section 2) to be disposed of?

RESPONSE 5 – The Town wishes to recover the existing gangway and existing float currently servicing the public pier (Section 2). The contractor shall remove the existing gangway and float (in whole sections; no demolition) and deliver them to the public parking area at the west end of the footbridge (north side of bridge). The Town will coordinate with the contractor to pick-up the gangway and float and relocate them to another site.

QUESTION 6 – Will the town accept demolition debris at the local transfer station at reduced or no charge?

RESPONSE 6 – Yes. Boothbay Regional Refuse Disposal District will accept all demolition debris for project at no charge. They request that demolition containers have no more than 12 timber piles in any one container due to weight.

QUESTION 7 – How are the double cap beams attached together?

RESPONSE 7 – Some cap beam framing connections were inadvertently omitted in the Bid Documents. Refer to attached Sheet SK-1 “Addendum #2: Footbridge Framing Connections” for typical joist to cap beam, upper cap beam to lower cap beam and lower cap beam to pile connections. Timber spikes and drift

pins shall be included as incidental to Pay Item 528.52. Steel straps for lower cap beam to pile connections shall be included in Pay Item 504.510 Miscellaneous Fabrication. See also Clarification 2 below.

QUESTION 8 – What is the scope of CMP’s work with regard to electrical removal?

RESPONSE 8 – To be determined. The electrical engineer has contacted CMP and is awaiting confirmation/clarification. Further information will be provided in a subsequent addendum as soon as it is available.

QUESTION 9 – Will there be electrical service at the west end of the footbridge after CMP electrical removal?

RESPONSE 9 – To be determined. The electrical engineer has contacted CMP and is awaiting confirmation/clarification. Further information will be provided in a subsequent addendum as soon as it is available.

QUESTION 10 – Will temporary electrical service be available/provided at the east end of the footbridge?

RESPONSE 10 – To be determined. The electrical engineer has contacted CMP and is awaiting confirmation/clarification. Further information will be provided in a subsequent addendum as soon as it is available.

QUESTION 11 – What is the final elevation of the footbridge?

RESPONSE 11 – The Bent Schedule on Sheet S1.0 identifies the approximate top of deck elevation (MLW) at each pile bent. This is based on the existing deck elevation, minus thicknesses of elements to be removed (e.g., existing decking joists, cap beams), plus thicknesses of new elements (e.g., new decking, joists, cap beams). In general, the footbridge elevations at each end are maintained as-is to blend into the existing site conditions at the east and west ends. The new joists and cap beams in the three (3) western and two (2) eastern bays create ADA-compliant ramps until a consistent elevation increase of 1’-1 ½” is achieved. Between the ramped ends, the footbridge deck elevation will typically increase 1’-1 ½”. This elevation increase requires no change in the top of pile elevation. New cap beams will bear on top of the existing piles at the existing top of pile elevation. The elevation increase is achieved by a combination of doubling the cap beams and using deeper cap beams and joists.

QUESTION 12 – Is the Bridge House to footbridge elevation a critical determinant in the footbridge elevations?

RESPONSE 12 – No. The footbridge will be elevated according to the method described above. The Bridge House owner will construct new stairs and/or ramps to accommodate the new height differential.

QUESTION 13 – Is it required to maintain pedestrian access to the Bridge House during construction?

RESPONSE 13 – No.

QUESTION 14 – What are the access opportunities and/or restrictions at the east end of the footbridge (Squirrel Island parking area)?

RESPONSE 14 – The Town has communicated with Squirrel Island representatives. A Squirrel Island representative will be available as needed to coordinate with the contractor. Squirrel Island representatives support the project and will coordinate as needed regarding underground utilities along the south edge of the east end of their parking lot and along the property boundary where railings will be improved/replaced. The Squirrel Island parking lot may be used as a lay down/staging area during construction.

QUESTION 15 – Where do you want ice and water shield installed?

RESPONSE 15 – Ice and water shield shall be installed on the tops of all piles prior to cap beam installation.

QUESTION 16 – Will Section 1 and Section 2 be awarded separately if the low bidder for each section is not the same contractor?

RESPONSE 16 – Yes.

QUESTION 17 – What level of PT treatment is required for wood?

RESPONSE 17 – See Sheet S0.0 for wood treatment requirements.

QUESTION 18 – Are steel pile brackets required at all locations and how are they installed below the mudline?

RESPONSE 18 – Per Sheet S4.0, detail 8/S5.0 is typical at piles on ledge exposed at low tide only. We hope the contractor will remove relatively thin layers of sediment to install pile brackets where practical, but the intent is not to require temporary dewatering or deep digging in order to install pile brackets. We estimate 21 pairs of steel pile brackets will be required. This quantity shall be used for Bidder pricing. See also Clarification 2 below.

QUESTION 19 – Will the Bridge House be without power during construction?

RESPONSE 19 – Yes. Priority should be given to reconnect utilities to the Bridge House as soon as practical, however it is understood that the Bridge House may be without utilities and access for some or all of construction.

QUESTION 20 – Will the Bridge House temporarily support the roof, prior to start of construction.

RESPONSE 20 – Yes, that is the intent. Bidders shall assume the bridge house roof will be temporarily supported prior to the start of construction when generating their bid.

QUESTION 21 – How much penetration is required for float piles? What if bedrock is hit prior to the required depth?

RESPONSE 21 – 20' of embedment is required for float piles. If bedrock is encountered before 20' that will be dealt with during construction.

QUESTION 22 – Is the cost of float piles included in the “Float Pile” line item or “Timber Piles, Delivered and Installed” line item?

RESPONSE 22 – Float Piles.

QUESTION 23 – On the eastern end of the bridge, where the post bases are proposed to be reused, are interim posts necessary to hold up the cable rail?

RESPONSE 23 – This point is well taken. Since the existing post bases are spaced greater than 4' on-center, yes, intermediate posts are necessary to support the cable rail and prevent gaps between cables from exceeding the 4" maximum spacing. Intermediate posts shall be HSS2x2x1/8 stainless steel to match the intermediate posts specified on the footbridge. At the north rail at the eastern end, the 4x6 blocking below the intermediate posts shall be anchored to the existing concrete walkway. At the south rail at the eastern end, blocking below the intermediate posts shall sit on compacted gravel pads.

QUESTION 24 – Can you provide bidders with S4.0 marked up showing each timber size to eliminate possible conflicts with the schedule found elsewhere?

RESPONSE 24 – No. The sections on Sheet S4.0 do not include specification of individual member sizes because member sizes, such as cap beams, vary at different locations along the bridge. Refer to the Bent Schedule, Framing Plans, Sections and Details.

QUESTION 25 – We recommend stainless 16D nails for decking and stainless fastenings for the handrail.

RESPONSE 25 – We accept this recommendation and hereby revise the specifications accordingly. Special Provision section 528.12 Materials, subsection Fasteners, which applies to wood decking fasteners will be updated as follows: Fasteners: Spiral shanked nails, ~~hot dipped galvanized~~ stainless steel, size and type to suit condition or as indicated on the Drawings. Special Provision section 507.081 Materials, subsection Wood Fasteners, which applies to wood bridge railing fasteners will be updated as follows: Wood fasteners: Nails or screws, ~~hot dipped galvanized or double barrier coated~~ stainless steel, size and type to suit condition or as indicated on the Drawings.

QUESTION 26 – Allowing the contractor to use 2x8 decking instead of 2x6 decking will save in labor costs. Can 2x8 decking be used?

RESPONSE 26 – Yes. Bidders shall include a note with their Bid if 2x8 decking is used in their price so that the final construction documents can be updated to match if needed.

CLARIFICATION 1

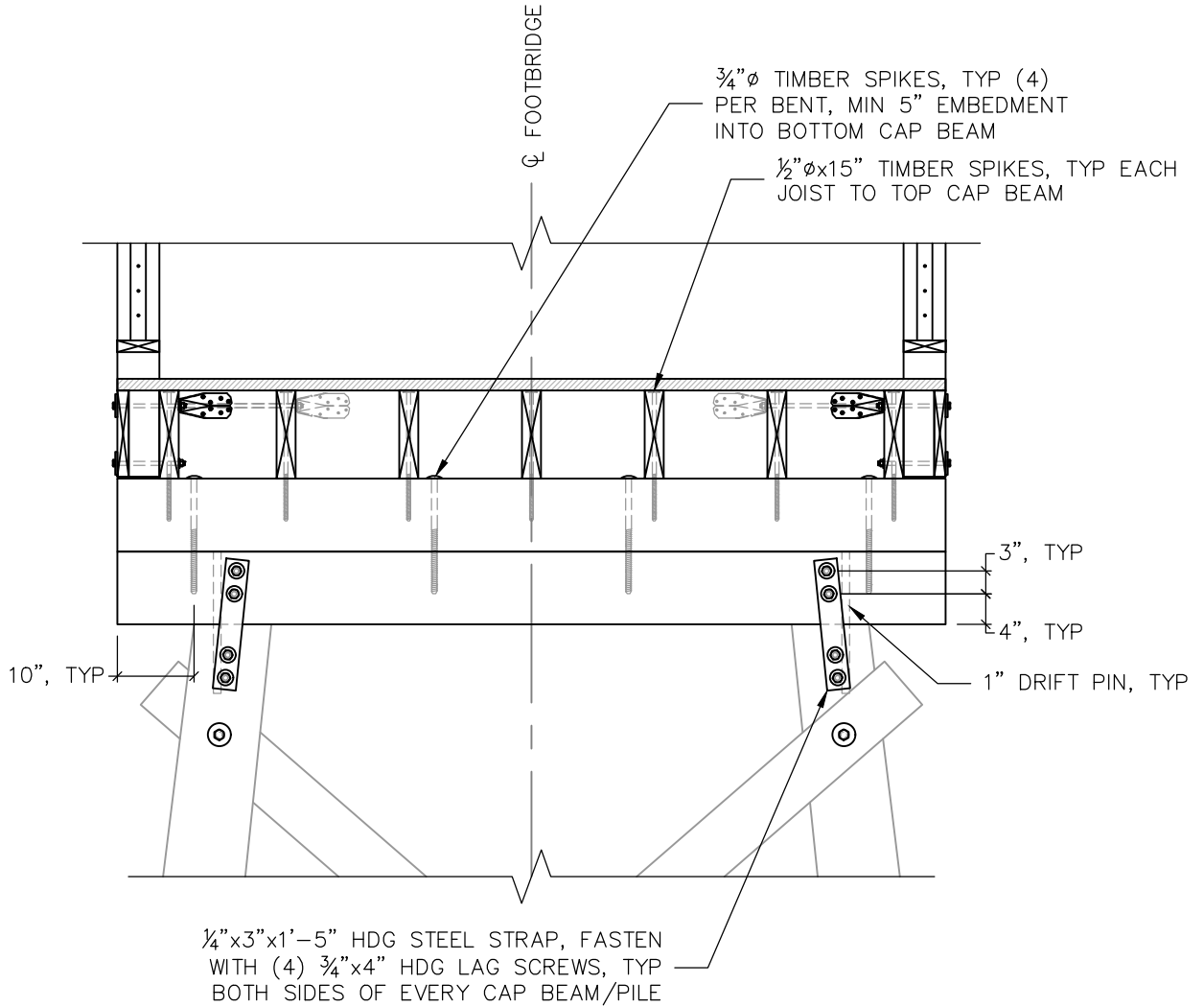
Gartley & Dorsky will submit the municipal Building Permit application. The Building Permit will be secured prior to contract award. Bidders do not need to include acquisition of a municipal Building Permit in their bid.

CLARIFICATION 2

532 Metal Fabrications is no longer in MeDOT's system. Special Provision 532 Metal Fabrications shall be removed in its entirety and replaced with attached Special Provision 504.510 Structural Steel (Misc. Fabrication). Note that Special Provision 504.510 Structural Steel (Misc. Fabrication) requires payment as a Lump Sum. The attached Schedule of Items has been updated to reflect this change. Special Provision 504.510 Structural Steel (Misc. Fabrication) lump sum amount shall include 21 pairs of steel pile brackets, steel straps for lower cap beam to pile connections, and associated incidentals.

ATTACHMENTS

SK-1 Addendum #2: Footbridge Framing Connections
Special Provision 504.510 Structural Steel (Misc. Fabrication)
Revised Schedule of Items



ADDENDUM #2: FOOTBRIDGE FRAMING CONNECTIONS

SCALE: 1/2" = 1'-0"

NOTES:

1. SEE DETAIL 2 ON S4.0 FOR ADDITIONAL INFORMATION ABOUT THE FRAMING SHOWN HERE
2. AT VIEWING PLATFORM CAP BEAMS, 3/4" TIMBER SPIKES CONNECTING THE UPPER AND LOWER CAP BEAMS TOGETHER SHALL BE SPACED AT 2'-6" ON CENTER MAX
3. ALL SPECIFIED TIMBER SPIKES SHALL BE PORTLAND BOLT & MANUFACTURING COMPANY TIMBER SPIKES OR EQUIVALENT
4. CONTRACTOR SHALL DETERMINE THE TIMBER SPIKE LENGTH WHERE IT HAS NOT BEEN SPECIFICALLY SPECIFIED

Gartley & Dorsky
ENGINEERING & SURVEYING

59 Union Street, Unit 1, P.O. Box 1031 Camden, ME 04843-1031
Ph (207) 236-4365 Fax (207) 236-3055 Toll Free 1-888-282-4365
165 Main Street Suite 2F P.O. Box 1072 Damariscotta, Maine 04543
Ph. (207) 790-5005

TOWN OF BOOTHBAY HARBOR FOOTBRIDGE RENOVATION
BOOTHBAY HARBOR, MAINE

DECEMBER 2, 2022

PROJ. NO. 2020-033

SK-1

SPECIAL PROVISIONS
SECTION 504
STRUCTURAL STEEL
(Misc. Fabrications)

504.02 Materials:

Replace the entire section with the following:

All materials shall conform to the following:

Steel:

1. Steel Plates, Shapes and Bars: ASTM A36 unless otherwise noted.
2. Steel Plates; Bent or Cold Formed: ASTM A283, Grade C.
3. Steel Tubing; Hot-formed, welded or seamless: ASTM A501.
4. Cold-Finished Steel Bars: ASTM A108, grade as selected by fabricator.
5. Steel Pipe: ASTM A53 Type E or S; Grade B; Hot dip galvanized Schedule 40 or 80 as indicated.

Stainless Steel: Plate, Shapes - ASTM A316.

Fasteners: Select fasteners for type, grade and class required. Provide hot dip galvanized fasteners at all locations unless noted otherwise. All fasteners shall conform to the following:

1. Anchor Bolts: ASTM A307, heavy hex-headed type, unless otherwise noted, hot dip galvanized.
2. High Strength Bolts, Nuts and Washers: ASTM A325-N unless otherwise noted, hot dip galvanized.
3. Unfinished Threaded Fasteners: ASTM A307, Grade A, hot dip galvanized.
4. Lock Washers: Helical spring type carbon steel, galvanized to ASTM A153.
5. Screws: Stainless Steel; Minimum size #14 x 2-1/2" unless otherwise noted.

504.12 Protective Coatings

Replace paragraph 2 sentence 3 with the following:

Galvanize fasteners in accordance with ASTM A153 Class C.

504.28 Welded Fabrication

Add the following to the end of the section:

1. Verify dimensions on site prior to shop fabrication.
2. Fabricate items with joints tightly fitted and secured.
3. Fit and shop assemble in largest practical sections for delivery to site.
4. Provide continuous welds.
5. Grind exposed welds flush and smooth with adjacent finished surface. Ease exposed edges to small uniform radius.
6. Exposed Mechanical Fastenings: Flush countersunk screws or bolts; unobtrusively

- located; consistent with design of structure, except where specifically noted otherwise.
7. Make exposed joints butt tight, flush, and hairline.
 8. Supply components required for anchorage of metal fabrications. Fabricate anchorage and related components of same material and finish as metal fabrication, except where specifically noted otherwise.

504.65 Method of Measurement

Replace the entire section with the following:

Misc. Fabrications for steel pile brackets and steel straps for lower cap beam to pile connections will be measured as one lump sum, furnished, coated and installed. Materials, equipment, labor, hardware, fasteners, epoxy, and necessary installation shall be incidental to the item.

504.66 Basis of Payment:

Add the following pay item to the bottom of the section:

504.510	Misc. Fabrication	Lump Sum
---------	-------------------	----------

**TOWN OF BOOTHBAY HARBOR
 FOOTBRIDGE REHABILITATION PROJECT
 SCHEDULE OF ITEMS - BASE BID
 MDOT WIN: 023807.00**

OCTOBER 2022
 REVISED DECEMBER 2022

BID ITEM	ITEM DESCRIPTION	UNITS	APPROXIMATE QUANTITY AND UNITS	UNIT PRICE	BID ITEM TOTAL
Section 1 - Base Bid					
202.19	Remove Existing Bridge and Public Pier	LS	1		
502.219	Structural Concrete, Abutments and Retaining Walls	LS	1		
504.510	Misc. Fabrication	LS	1		
507.08	Bridge Railing	LF	1560		
528.52	Structural Timber Boardwalk	SF	6765		
528.60	Structural Timber Decking	SF	6765		
530.70	Timber Piles, Delivered and Installed	LF	860		
638.04	Bridge Walkway Lighting	LF	1560		
641.12	Backrest Bench	EA	8		
641.13	Flat Bench	EA	8		
655.202	Bridge House Service	LF	340		
801.132	2" Force Main	LF	270		
825.430	1" CTS Service	LF	270		
TOTAL BID COST - SECTION 1					\$0.00

Note: Quantities are approximate. Payment will be based on amount installed.

PREPARED BY:



**TOWN OF BOOTHBAY HARBOR
 FOOTBRIDGE REHABILITATION PROJECT
 SCHEDULE OF ITEMS - BASE BID
 MDOT WIN: 023807.00**

OCTOBER 2022
 REVISED DECEMBER 2022

BID ITEM	ITEM DESCRIPTION	UNITS	APPROXIMATE QUANTITY AND UNITS	UNIT PRICE	BID ITEM TOTAL
Section 2 - Base Bid					
530.70	Float Pile	LF	165		
531.9601	Aluminum Gangway - 40 feet long	EA	1		
	Float (12'x30')	EA	3		
TOTAL BID COST - SECTION 2					\$0.00

Note: Quantities are approximate. Payment will be based on amount installed.

PREPARED BY:



59B Union Street P.O. Box 1031 Camden, ME 04843-1031
 Ph (207) 236-4365 Fax (207) 236-3055 Toll Free 1-888-282-4365