



Janet T. Mills
GOVERNOR

STATE OF MAINE
DEPARTMENT OF TRANSPORTATION
16 STATE HOUSE STATION
AUGUSTA, MAINE 04333-0016

Dale F. Doughty
COMMISSIONER

March 26, 2026
Subject: Northern Maine: Railroad
Timber
Switch and Cross Ties
WIN: 029488.00c
Location: **Brownville-Millinocket**
Amendment No. 1

Dear Sir/Ms.:

The following questions have been received:

Question: Does the end user prefer gondola or centerbeam railcar for delivery? Please specify if there is a preference, or if both can be utilized.

Response: Both can be utilized

Question: Will the NBM system be moving these ties as company material (freight free) once the ties reach their line at the Brownville Junction or Mattawamkeag Interchange?

Response: NBM will be moving these freight free once it reaches their line.

Question: For the 7"x9" ties - are these ties to be all 7"x9" Grade 5, or will a grade 4/5 mix be accepted?

Response: A maximum of 20% may be Grade 4. The rest shall be Grade 5 ties.

Question: Are there drawings available for the turnouts?

Response: See attached

Question: Bid package has ME DOT - Bid Guaranty-Bid Bond Form with "SAMPLE" Watermark. Our broker has requested a copy of the bid bond language Without the watermark. Please provide.

Response: See attached

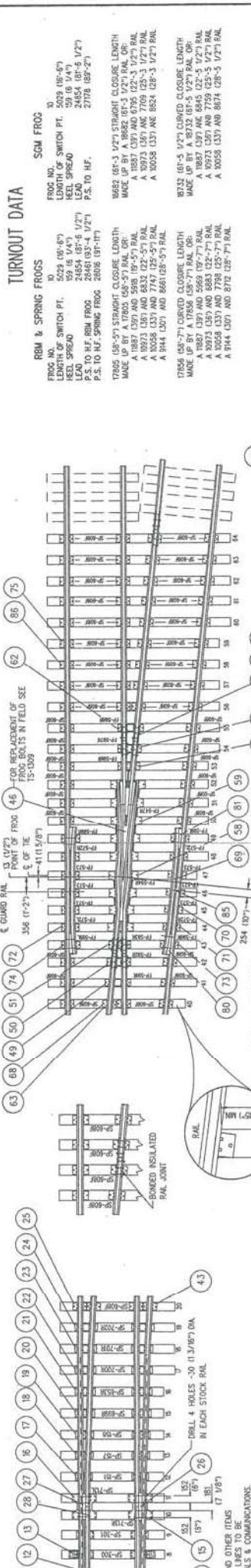
Consider these changes and information prior to submitting your bid on **April 1, 2026.**

Sincerely,



George M. A. Macdougall P.E.
Contracts & Specifications Engineer

ESS STATED OTHERWISE ARE A ROUNDED SOFT CONVERSION OF BRITISH UNITS SHOWN IN BRACKETS.



TURNOUT DATA

RBM & SPRING FROGS		SGM FROG	
FROG NO.	5029 (06'-8")	FROG NO.	5029 (06'-8")
LENGTH OF SWITCH PT.	59 (6 1/4')	LENGTH OF SWITCH PT.	59 (6 1/4')
HEEL SPREAD	24481 (83'-4 1/2")	HEEL SPREAD	24481 (83'-4 1/2")
P.S. TO R.F. RBM FROG	24481 (83'-4 1/2")	P.S. TO R.F. SGM FROG	24481 (83'-4 1/2")
P.S. TO H.F. RBM FROG	3016 (99'-11")	P.S. TO H.F. SGM FROG	3016 (99'-11")

FROGS 15'-0" TO 15'-6" CURVED CLOSURE LENGTH MADE UP BY A 17'-0" RAIL		FROGS 18'-0" TO 18'-6" CURVED CLOSURE LENGTH MADE UP BY A 17'-0" RAIL	
A 1887 (59') AND 598 (19'-5 1/2") RAIL	A 1887 (59') AND 598 (19'-5 1/2") RAIL	A 1887 (59') AND 598 (19'-5 1/2") RAIL	A 1887 (59') AND 598 (19'-5 1/2") RAIL
A 1973 (59') AND 683 (22'-5 1/2") RAIL	A 1973 (59') AND 683 (22'-5 1/2") RAIL	A 1973 (59') AND 683 (22'-5 1/2") RAIL	A 1973 (59') AND 683 (22'-5 1/2") RAIL
A 2058 (59') AND 777 (25'-9 1/2") RAIL	A 2058 (59') AND 777 (25'-9 1/2") RAIL	A 2058 (59') AND 777 (25'-9 1/2") RAIL	A 2058 (59') AND 777 (25'-9 1/2") RAIL
A 394 (59') AND 869 (28'-9 1/2") RAIL	A 394 (59') AND 869 (28'-9 1/2") RAIL	A 394 (59') AND 869 (28'-9 1/2") RAIL	A 394 (59') AND 869 (28'-9 1/2") RAIL

FROGS 18'-0" TO 18'-6" CURVED CLOSURE LENGTH MADE UP BY A 17'-0" RAIL		FROGS 21'-0" TO 21'-6" CURVED CLOSURE LENGTH MADE UP BY A 17'-0" RAIL	
A 1887 (59') AND 598 (19'-5 1/2") RAIL	A 1887 (59') AND 598 (19'-5 1/2") RAIL	A 1887 (59') AND 598 (19'-5 1/2") RAIL	A 1887 (59') AND 598 (19'-5 1/2") RAIL
A 1973 (59') AND 683 (22'-5 1/2") RAIL	A 1973 (59') AND 683 (22'-5 1/2") RAIL	A 1973 (59') AND 683 (22'-5 1/2") RAIL	A 1973 (59') AND 683 (22'-5 1/2") RAIL
A 2058 (59') AND 777 (25'-9 1/2") RAIL	A 2058 (59') AND 777 (25'-9 1/2") RAIL	A 2058 (59') AND 777 (25'-9 1/2") RAIL	A 2058 (59') AND 777 (25'-9 1/2") RAIL
A 394 (59') AND 869 (28'-9 1/2") RAIL	A 394 (59') AND 869 (28'-9 1/2") RAIL	A 394 (59') AND 869 (28'-9 1/2") RAIL	A 394 (59') AND 869 (28'-9 1/2") RAIL

- ### NOTES:
- TURNOUT TO BE INSTALLED AND MAINTAINED IN ACCORDANCE WITH THE LATEST ISSUE OF THE STANDARD PRACTICE CIRCULARS.
 - WHEN REFERING TO TURNOUTS, DRAWING NUMBER MUST BE STATED AS "A" TO "X" TO INDICATE.
 - RIGHT HAND TURNOUT - POWER OPERATED SWITCH - MACHINE ON RIGHT - RBM FROG 01-61-10
 - LEFT HAND TURNOUT - POWER OPERATED SWITCH - MACHINE ON LEFT - RBM FROG 01-61-10
 - RIGHT HAND TURNOUT - POWER OPERATED SWITCH - MACHINE ON LEFT - SGM FROG 01-61-10
 - LEFT HAND TURNOUT - POWER OPERATED SWITCH - MACHINE ON RIGHT - SGM FROG 01-61-10
 - RIGHT HAND TURNOUT - POWER OPERATED SWITCH - MACHINE ON LEFT - RBM FROG 01-61-10
 - LEFT HAND TURNOUT - POWER OPERATED SWITCH - MACHINE ON RIGHT - RBM FROG 01-61-10
 - RIGHT HAND TURNOUT - POWER OPERATED SWITCH - MACHINE ON LEFT - SGM FROG 01-61-10
 - LEFT HAND TURNOUT - POWER OPERATED SWITCH - MACHINE ON RIGHT - SGM FROG 01-61-10
 - RIGHT HAND TURNOUT - POWER OPERATED SWITCH - MACHINE ON LEFT - RBM FROG 01-61-10
 - LEFT HAND TURNOUT - POWER OPERATED SWITCH - MACHINE ON RIGHT - RBM FROG 01-61-10
 - RIGHT HAND TURNOUT - POWER OPERATED SWITCH - MACHINE ON LEFT - SGM FROG 01-61-10
 - LEFT HAND TURNOUT - POWER OPERATED SWITCH - MACHINE ON RIGHT - SGM FROG 01-61-10
 - RIGHT HAND TURNOUT - POWER OPERATED SWITCH - MACHINE ON LEFT - RBM FROG 01-61-10
 - LEFT HAND TURNOUT - POWER OPERATED SWITCH - MACHINE ON RIGHT - RBM FROG 01-61-10
 - RIGHT HAND TURNOUT - POWER OPERATED SWITCH - MACHINE ON LEFT - SGM FROG 01-61-10
 - LEFT HAND TURNOUT - POWER OPERATED SWITCH - MACHINE ON RIGHT - SGM FROG 01-61-10

TE ARRANGEMENT & SPACING FOR SGM FROGS & THE LENGTH REFERENCES ABOVE BELONG TO THE SETS REVERSED.

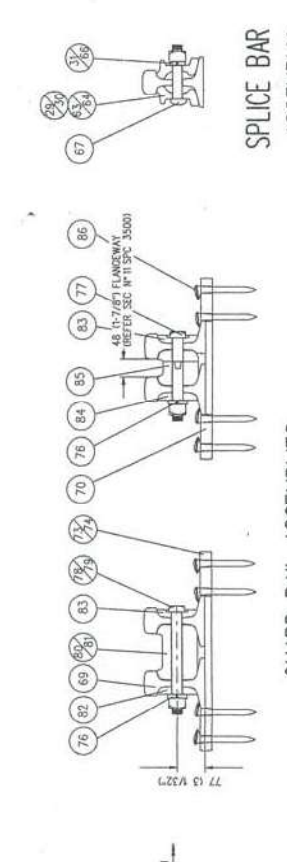
No.	Date	Revision
1	JAN 95	TE ARRANGEMENT & SPACING FOR SGM FROGS & THE LENGTH REFERENCES ABOVE BELONG TO THE SETS REVERSED. LMO

Drawn	MC	Checked	GS	Approved
Standard	Norme			

NO. 10 TURNOUT - 15 LB. RAIL
 18'-6" SAMSON POINT SWITCH
 UNIFORM REEF DESIGN
 WOOD TIES

FOR OTHER ITEMS REFER TO THE LATEST ISSUE OF THE STANDARD PRACTICE CIRCULARS.

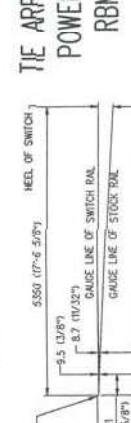
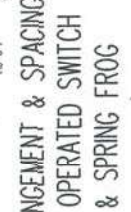
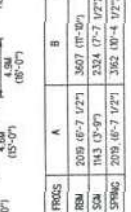
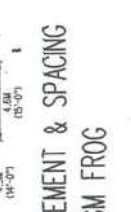
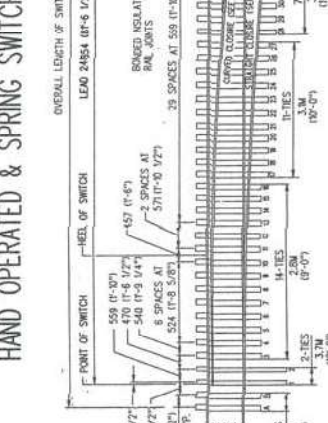
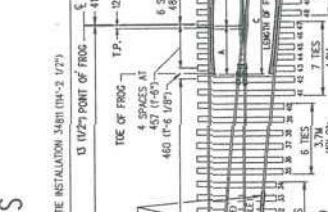
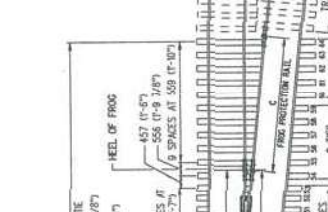
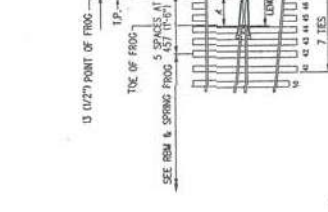
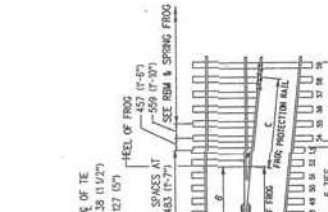
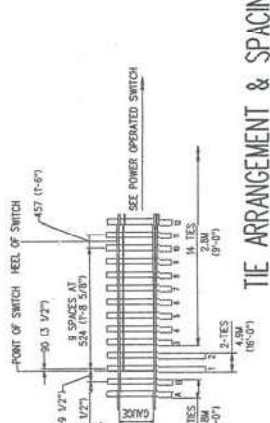
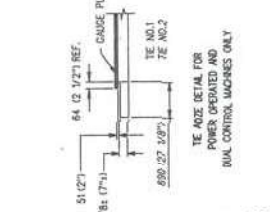
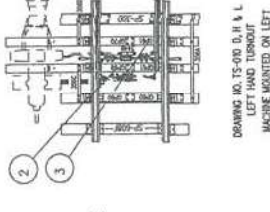
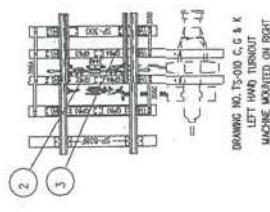
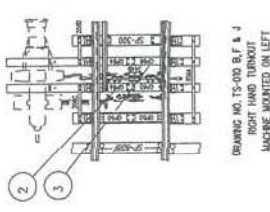
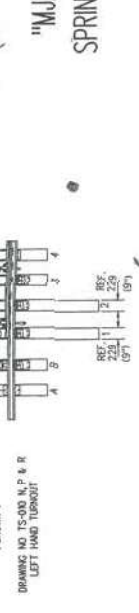
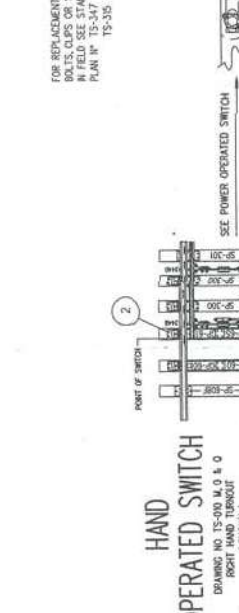
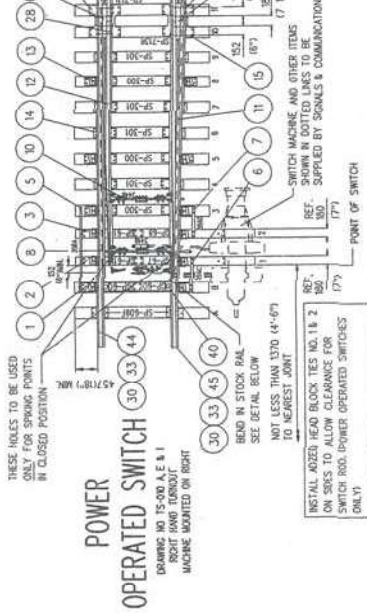
FOR ADDITIONAL INFORMATION E-MAIL "TRACKS10"



Office of Chief Engineer
 Bureau de l'ingénieur en Chef

Date: FEB. 94
 Plan Number: TS - 010 A/X
 Dessin numéro: TS - 010 A/X

ALL METRIC MEASUREMENTS IN MILLIMETERS UNLESS STATED OTHERWISE



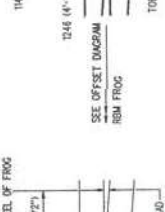
TIE ARRANGEMENT & SPACING

SGM FROG



TIE ARRANGEMENT & SPACING

POWER OPERATED SWITCH RBM & SPRING FROG



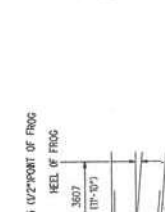
TIE ARRANGEMENT & SPACING

POWER OPERATED SWITCH RBM & SPRING FROG



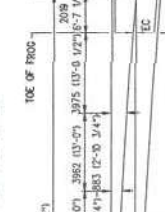
TIE ARRANGEMENT & SPACING

POWER OPERATED SWITCH RBM & SPRING FROG



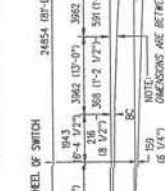
TIE ARRANGEMENT & SPACING

POWER OPERATED SWITCH RBM & SPRING FROG



TIE ARRANGEMENT & SPACING

POWER OPERATED SWITCH RBM & SPRING FROG



STOCK RAIL BENDING DETAIL



STOCK RAIL BENDING DETAIL



STOCK RAIL BENDING DETAIL



OFFSET DIAGRAM

SGM FROG



OFFSET DIAGRAM

POWER OPERATED SWITCH RBM & SPRING FROG



OFFSET DIAGRAM

POWER OPERATED SWITCH RBM & SPRING FROG



OFFSET DIAGRAM

POWER OPERATED SWITCH RBM & SPRING FROG



OFFSET DIAGRAM

POWER OPERATED SWITCH RBM & SPRING FROG



OFFSET DIAGRAM

POWER OPERATED SWITCH RBM & SPRING FROG



DISPONIBLE EN FRANCAIS

BOND # _____

CONTRACT PERFORMANCE BOND
(Surety Company Form)

KNOW ALL MEN BY THESE PRESENTS: That _____
_____ **in the State of** _____, as principal,
and.....
a corporation duly organized under the laws of the State of and having a
usual place of business
as Surety, are held and firmly bound unto the Treasurer of the State of Maine in the sum
of _____ **and 00/100 Dollars (\$** _____ **)**,
to be paid said Treasurer of the State of Maine or his successors in office, for which
payment well and truly to be made, Principal and Surety bind themselves, their heirs,
executors and administrators, successors and assigns, jointly and severally by these
presents.

The condition of this obligation is such that if the Principal designated as Contractor in
the Contract to construct Project Number _____ in the Municipality of
_____ promptly and faithfully performs the Contract, then this
obligation shall be null and void; otherwise it shall remain in full force and effect.

The Surety hereby waives notice of any alteration or extension of time made by the State
of Maine.

Signed and sealed this day of, 20.....

WITNESSES:

SIGNATURES:

CONTRACTOR:

Signature.....

.....

Print Name Legibly

Print Name Legibly

SURETY:

Signature

.....

Print Name Legibly

Print Name Legibly

SURETY ADDRESS:

NAME OF LOCAL AGENCY:

.....
.....
.....

ADDRESS
.....
.....

TELEPHONE.....

.....

BOND # _____

CONTRACT PAYMENT BOND
(Surety Company Form)

KNOW ALL MEN BY THESE PRESENTS: That _____
_____ **in the State of** _____, as principal,
and.....
a corporation duly organized under the laws of the State of and having a
usual place of business in
as Surety, are held and firmly bound unto the Treasurer of the State of Maine for the use
and benefit of claimants as herein below defined, in the sum of
_____ **and 00/100 Dollars (\$** _____ **)**
for the payment whereof Principal and Surety bind themselves, their heirs, executors and
administrators, successors and assigns, jointly and severally by these presents.

The condition of this obligation is such that if the Principal designated as Contractor in
the Contract to construct Project Number _____ in the Municipality of
_____ promptly satisfies all claims and demands incurred for all
labor and material, used or required by him in connection with the work contemplated by
said Contract, and fully reimburses the obligee for all outlay and expense which the
obligee may incur in making good any default of said Principal, then this obligation shall
be null and void; otherwise it shall remain in full force and effect.

A claimant is defined as one having a direct contract with the Principal or with a
Subcontractor of the Principal for labor, material or both, used or reasonably required for
use in the performance of the contract.

Signed and sealed this day of, 20

WITNESS:

SIGNATURES:

CONTRACTOR:

Signature.....

.....

Print Name Legibly

Print Name Legibly

SURETY:

Signature.....

.....

Print Name Legibly

Print Name Legibly

SURETY ADDRESS:

NAME OF LOCAL AGENCY:

.....

ADDRESS

.....

.....

TELEPHONE

.....