



Janet T. Mills
GOVERNOR

STATE OF MAINE
DEPARTMENT OF TRANSPORTATION
16 STATE HOUSE STATION
AUGUSTA, MAINE 04333-0016

Dale F. Doughty
ACTING COMMISSIONER

January 12, 2026
Subject: Merrill's Corner Bridge
Replacement
WIN: 027530.00
Location: **Brownfield**
Amendment No. 3

Dear Sir/Ms.:

In the final plans:

REMOVE Sheet Number 22 of 26, SUPERSTRUCTURE dated 12/3/2025 (1 page) and **REPLACE** with the attached Sheet Number 22 of 26, SUPERSTRUCTURE dated 1/9/2026 (1 page).

The following questions have been received:

Question: In reference to Sheet 22, Note 6 is the reinforcing steel incidental or does pay in the unit price items?

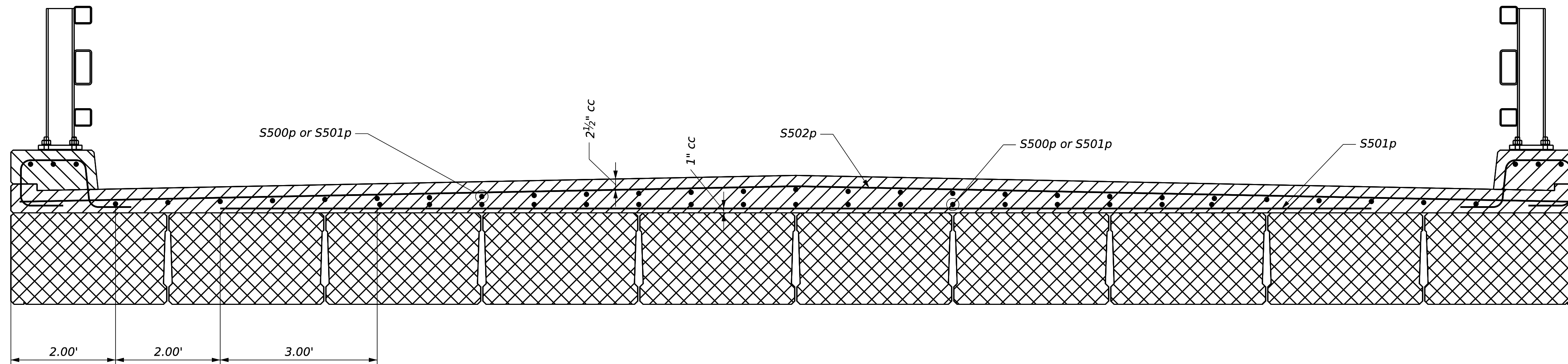
Response: Payment for reinforcing steel fabricated, delivered, and placed in the cast-in-place portion of the structural concrete slab will be paid for by the related 503 and 530 Pay Items. See Sheet 24 of the Plans for the reinforcing steel schedule for the structural concrete slab.

Consider these changes and information prior to submitting your bid on **January 14, 2026**.

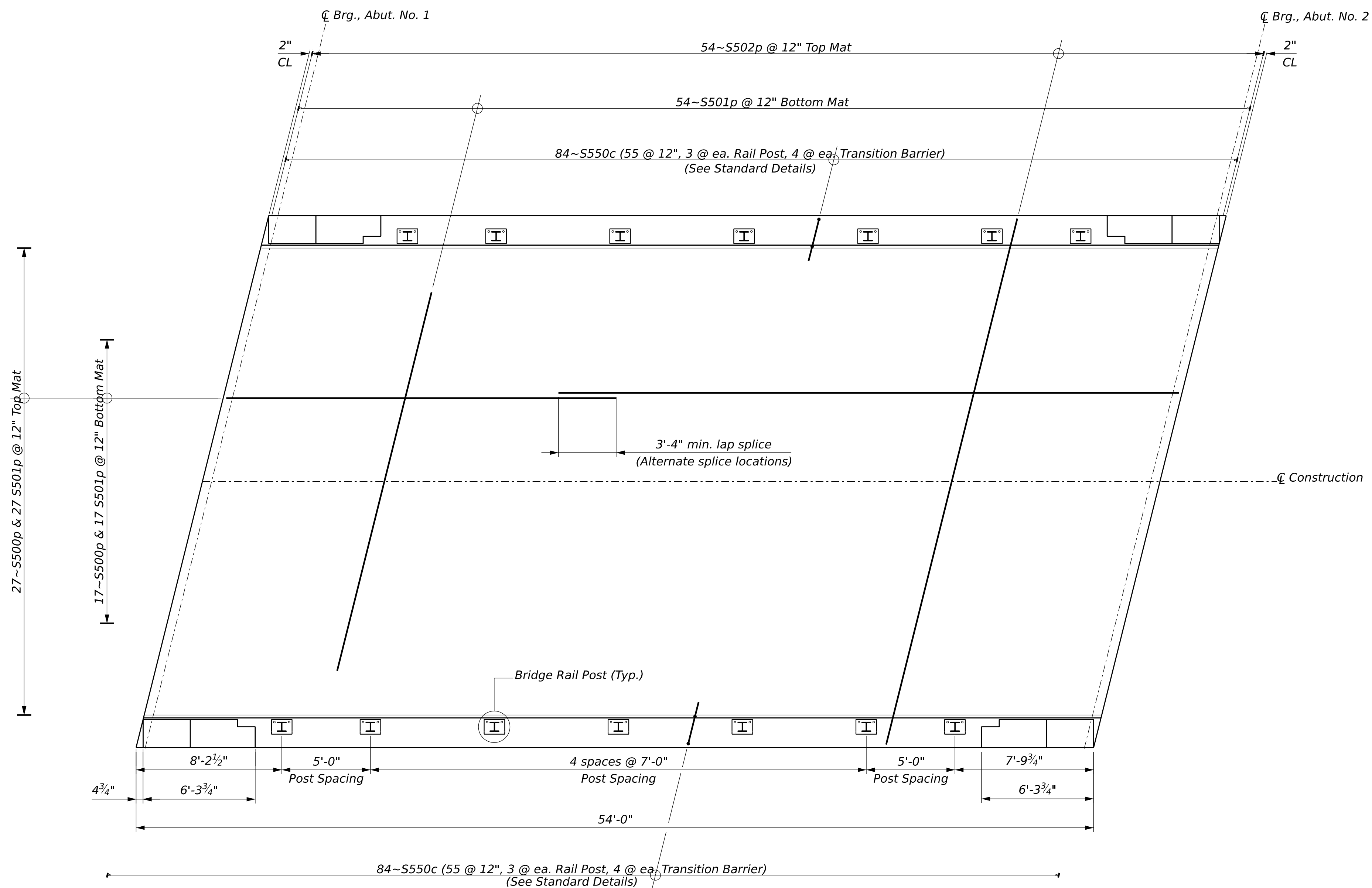
Sincerely,

A handwritten signature in blue ink that reads 'George Macdougall'.

George M. A. Macdougall P.E.
Contracts & Specifications Engineer



Superstructure Transverse Reinforcing Section



Superstructure Plan

SUPERSTRUCTURE NOTES

1. The deck thickness shall be adjusted in accordance with Special Provision Section 535, Precast, Prestressed Concrete Superstructure, Camber.
2. Reinforcing steel shall have a minimum concrete cover of 2 inches unless otherwise noted.
3. Form a one inch V-groove on the fascias at the horizontal joint between the curb and slab.
4. The Saw Cut Grooving shall be in the longitudinal direction.
5. The superstructure slab concrete shall be placed continuously and shall be kept plastic until the entire placement has been made.
6. Precast Concrete Deck Panels are not allowed on this project.
7. Provide 4 additional stirrups in the curbs at each Transition Barrier location.
8. The Contractor shall install Transition Barrier vertical closed stirrups, as shown in Standard Details Section 526, prior to the placement of the curb or sidewalk concrete.
9. Transition Barrier reinforcing steel shall be low-carbon chromium.

Username: Erin Brewer Date: 1/9/2026

STATE OF MAINE
DEPARTMENT OF TRANSPORTATION
Federal Project No. 02753000
WIN 027530.00

PROJ. MANAGER	DATE	BY	DATE	SIGNATURE	P.E. NUMBER	DATE
DESIGN-DETAILED	12/2025	JULIE BRASK	12/2025			
CHECKED-REVIEWED	12/2025	EDB	12/2025			
DESIGN-DETAILED		GAG				
CHECKED-REVIEWED		MWP				
DESIGN-DETAILED						
REVISIONS 1						
REVISIONS 2						
REVISIONS 3						
REVISIONS 4						
FIELD CHANGES						

MERRILLS CORNER BRIDGE NO. 0714
CROSSING SHEPARD'S RIVER
BROWNFIELD
SUPERSTRUCTURE

SHEET NUMBER
22
OF 26