



STATE OF MAINE  
DEPARTMENT OF TRANSPORTATION  
16 STATE HOUSE STATION  
AUGUSTA, MAINE 04333-0016

Janet T. Mills  
GOVERNOR

Bruce A. Van Note  
COMMISSIONER

September 7, 2022  
Subject: Lighting at I395 Exit  
State WIN:025103.00  
Location: **Brewer**  
Amendment No. 1

Dear Sir/Ms.:

The following questions have been received:

Question: Is it possible to get a copy of the details of the poles RTS with spoke arms? (26pcs) 35 FT.  
RTS HDG POLE W/BRI055HG SPOKE ARM - AASHTO LRFDLTS COMPLIANT

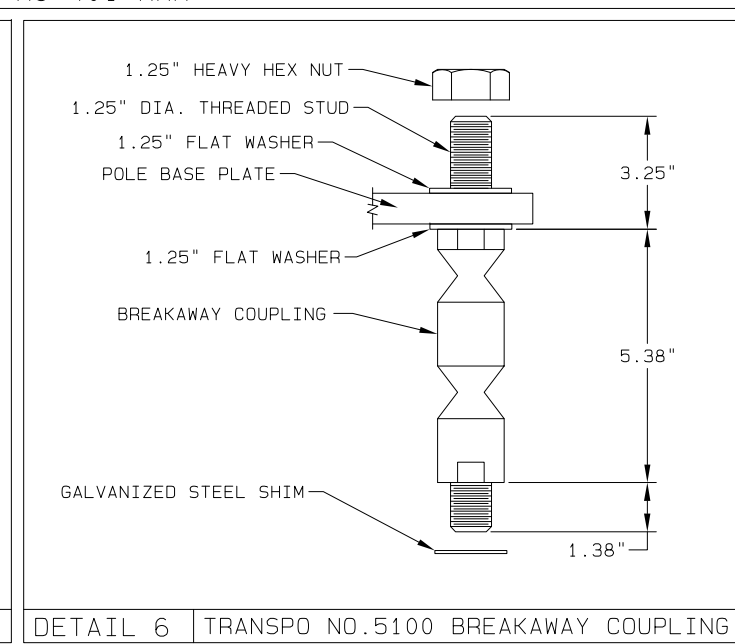
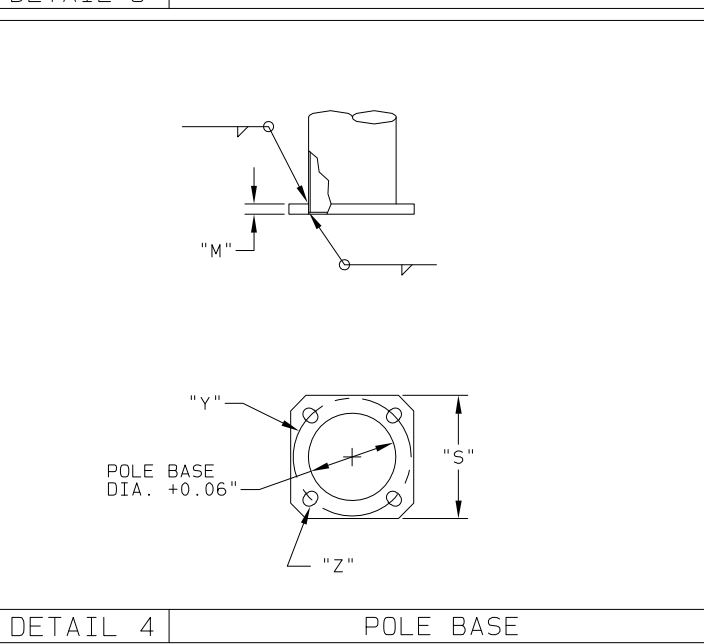
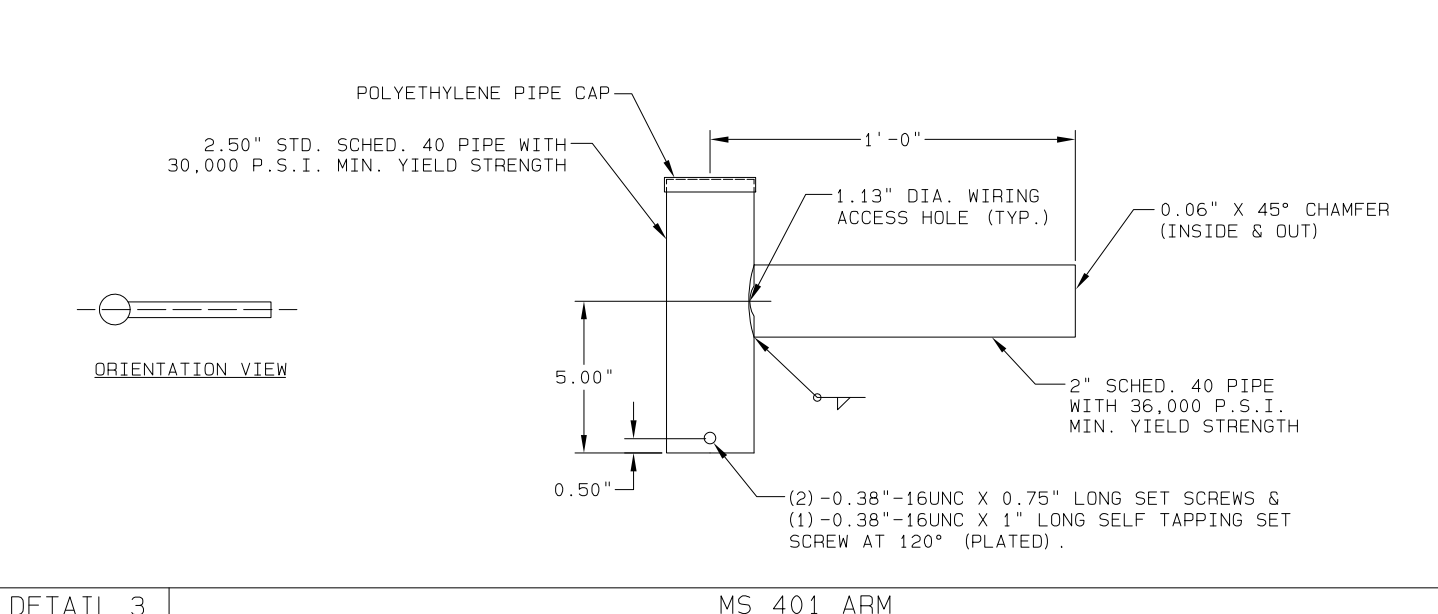
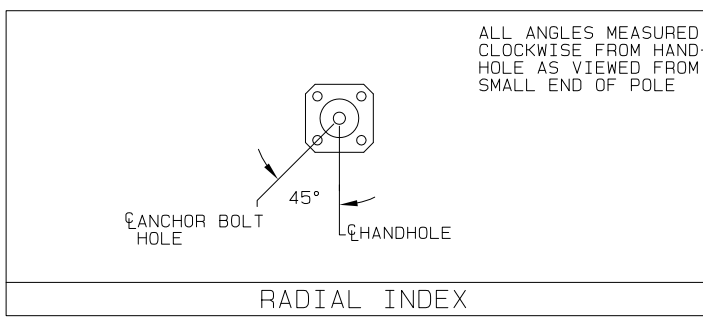
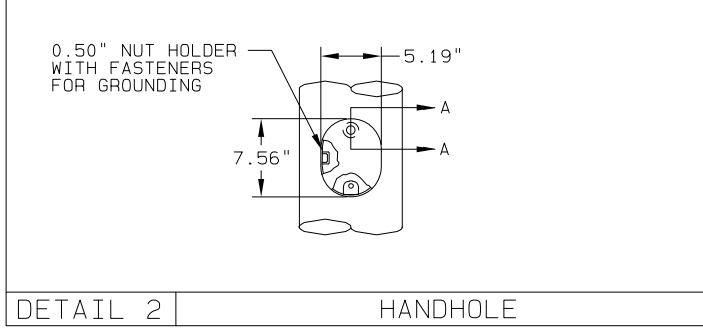
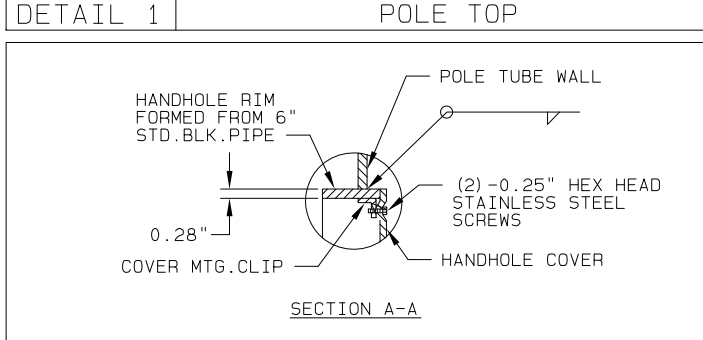
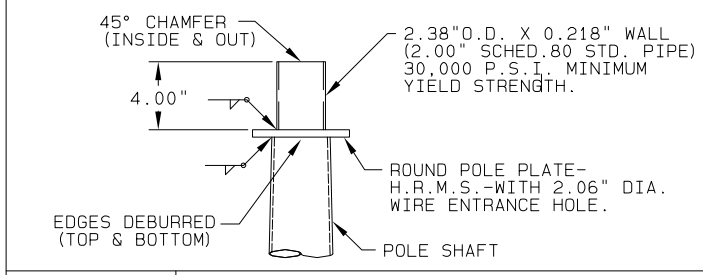
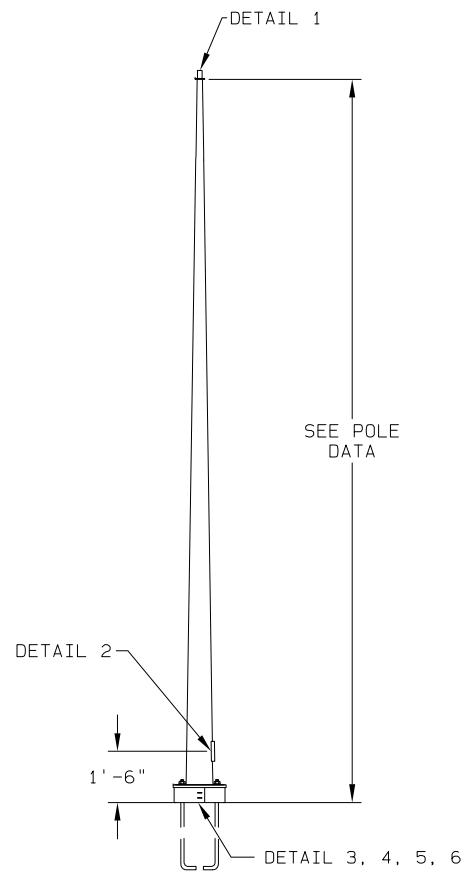
Response: Sample details from one vendor of both the pole and the arm are attached.

Consider these changes and information prior to submitting your bid on September 21, 2022.

Sincerely,

A handwritten signature in blue ink that reads "George Macdougall".

George M. A. Macdougall P.E.  
Contracts & Specifications Engineer



MATERIAL DATA					
COMPONENT	ASTM DESIGNATION	MIN. YIELD (KSI)	COMPONENT	ASTM DESIGNATION	MIN. YIELD (KSI)
TAPERED TUBES	A595 GR. A OR A572	55			
BASE PLATE	A36	36			
ANCHOR BOLTS	F1554 GR.55	55			
GALVANIZE-STRUCTURE	F537				
HARDWARE - COATING	HOT DIP ZINC				

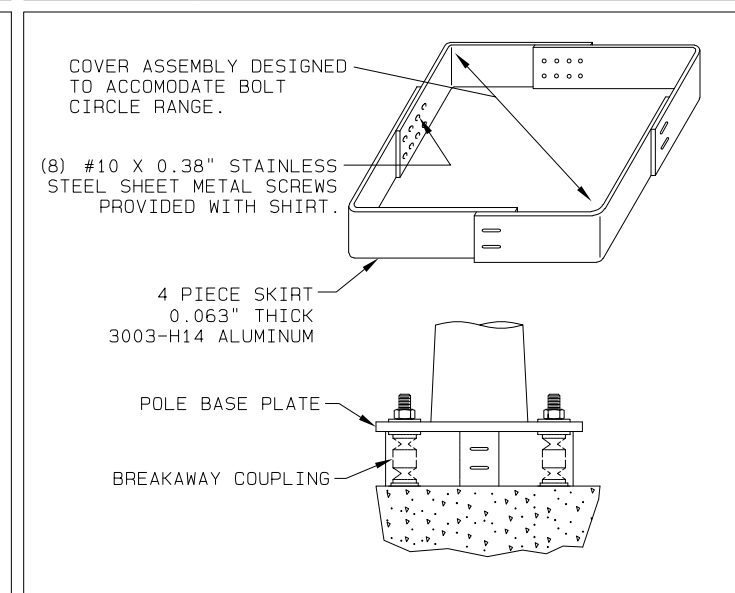
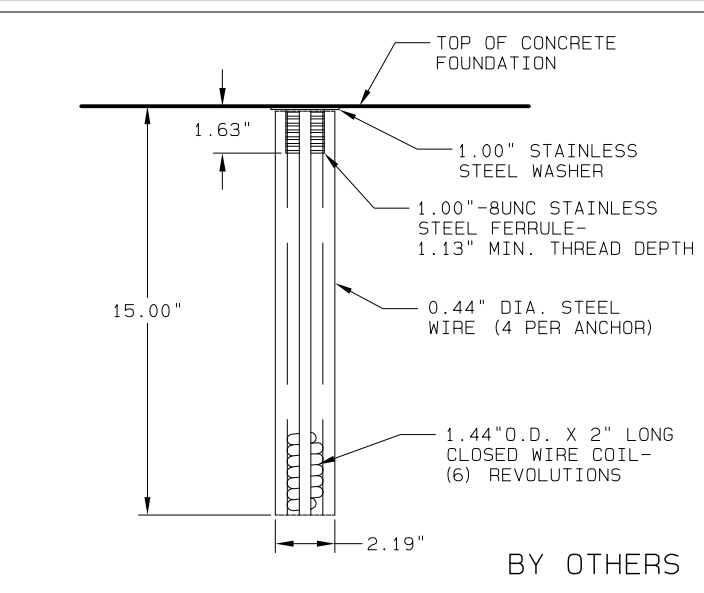
POLE DATA									
ITEM	QTY.	POLE TUBE				POLE BASE			
		BASE DIA. (IN)	TOP DIA. (IN)	LENGTH (FT)	GAUGE OR THK. (IN)	SQUARE "S" (IN)	BOLT CIRCLE "Y" (IN)	THK. "M" (IN)	HOLE/SLOT "Z" (IN)
1	1	8.00	3.10	35.00	7	11.50	11.00	1.25	1.50

THE LIGHTING STRUCTURES SHOWN ON THIS DRAWING HAVE BEEN DESIGNED IN ACCORDANCE WITH THE LOADING AND THE NOMINAL STRENGTH REQUIREMENTS OF THE 2015 AASHTO "LRFD SPECIFICATIONS FOR STRUCTURAL SUPPORTS FOR HIGHWAY SIGNS, LUMINAIRES AND TRAFFIC SIGNALS, FIRST EDITION", SLTS-1. THE WIND LOADS WERE CALCULATED FROM AN ULTIMATE WIND VELOCITY OF 120 MPH WITH A MEAN RECURRENCE INTERVAL OF 700 YEARS.

**AASHTO 2015 SPECIFICATIONS**

ALTHOUGH RARE, VIBRATIONS SEVERE ENOUGH TO CAUSE DAMAGE CAN OCCASIONALLY OCCUR IN STRUCTURES OF ALL TYPES. BECAUSE THEY ARE INFLUENCED BY MANY INTERACTING VARIABLES, VIBRATIONS ARE GENERALLY UNPREDICTABLE. THE USER'S MAINTENANCE PROGRAM SHOULD INCLUDE OBSERVATION FOR EXCESSIVE VIBRATION AND EXAMINATION FOR ANY STRUCTURAL DAMAGE OR BOLT LOOSENING. THE VALMONT WARRANTY SPECIFICALLY EXCLUDES FATIGUE FAILURE OR SIMILAR PHENOMENA RESULTING FROM INDUCED VIBRATION, HARMONIC OSCILLATION OR RESONANCE ASSOCIATED WITH MOVEMENT OF AIR CURRENTS AROUND THE PRODUCT.

**VIBRATION DISCLAIMER**



**Catalog #'s:**  
 Pole: RTS35 B04 SARM HG TRANSPD CPL MAINE DOT RFD330437  
 Anchor Bolts: ABSET MAINE DOT RFD330437

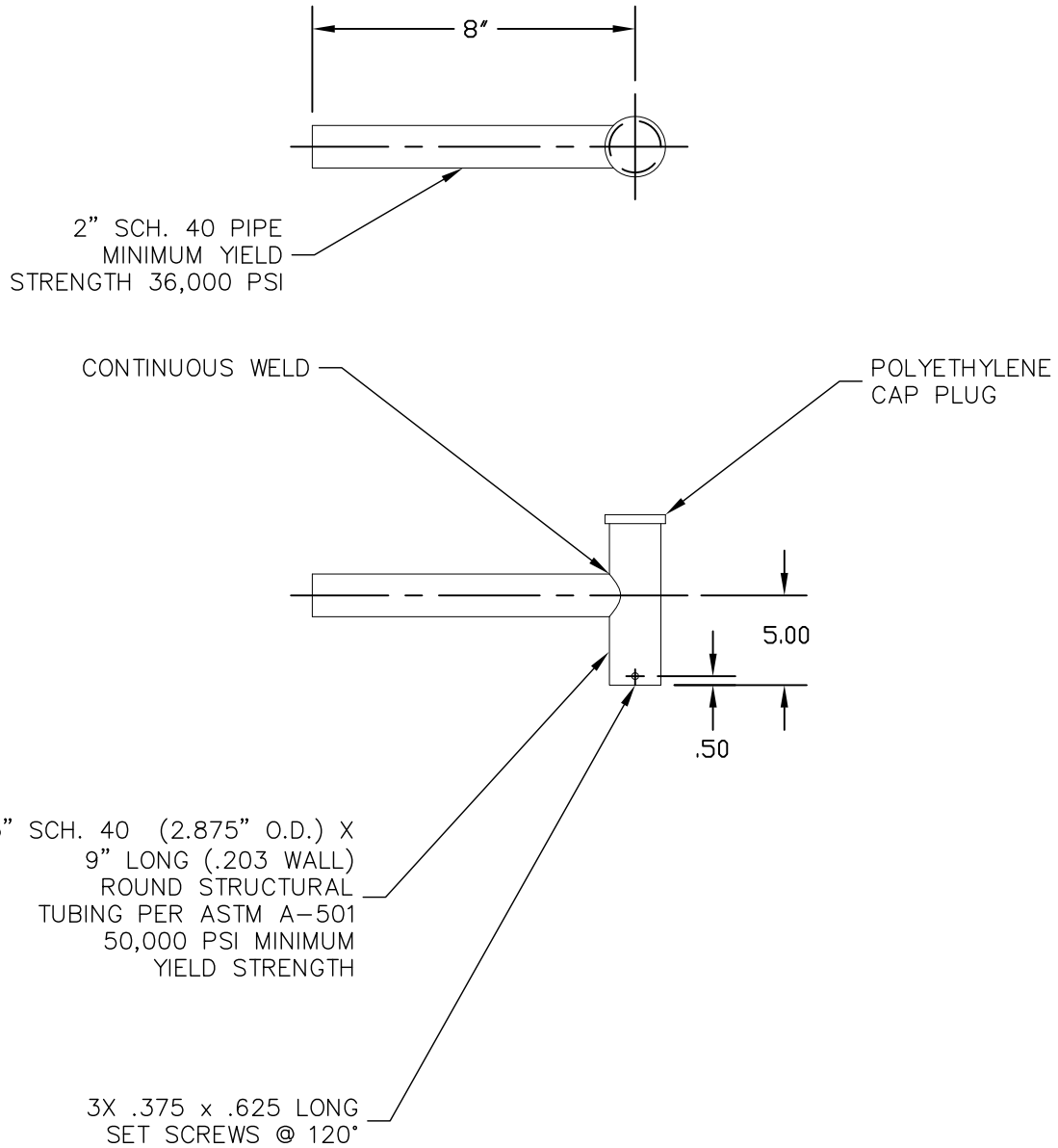
**Customer Signature & Date:**

**NOTES FOR CUSTOMER:**  
 1. APPROVED, SIGNED DRAWING SHALL ACCOMPANY PO.



SOLD TO: MAINE - DOT			JOB MAINE - DOT			ORDER NUMBER: ME548329P1		
SHIP TO: BREWER, MAINE			RFD330437			PAGE NUMBER: 1 OF 1		
P.O. #: 2421-22-10633-0 (DR2421 / RFD330437)			AGENT: MARK FOWLER			DRAWING NUMBER TSG013406		
AGENT: MARK FOWLER			TITLE LIGHTING STRUCTURES			REV -		
REV	DRAWN BY-DATE	CHECK BY-DATE	DESCRIPTION					

# BR-1055-



FINISH: PART NUMBER SUFFIX INDICATES FINISH  
I.E. BR-1055-XX

- BK : BLACK PAINT
- BZ : BRONZE PAINT
- GN : GREEN PAINT
- WH : WHITE PAINT
- HG : GALVANIZE TO ASTM A123
- PP : PRIME PAINT WITH RUST INHIBITIVE PRIMER