



STATE OF MAINE  
DEPARTMENT OF TRANSPORTATION  
16 STATE HOUSE STATION  
AUGUSTA, MAINE 04333-0016

Janet T. Mills  
GOVERNOR

Bruce A. Van Note  
COMMISSIONER

June 10, 2022  
Subject: Large Culvert Replacement  
State WIN: 023529.00  
Location: **Berwick**  
**Amendment No. 1**

Dear Sir/Ms.:

Please make the following changes to the Bid Documents:

In the Plan Set:

**ADD** the attached Shop Drawings for fabrication of pre-cast concrete box culvert, 10 pages.

The following question has been received:

**Question:** Please provide size, dimensions and weights for the state supplied box culvert sections.

**Response:** See attached shop drawings.

Consider these changes and information prior to submitting your bid on **June 15, 2022**.

Sincerely,

A handwritten signature in blue ink that reads "George Macdougall".

George M. A. Macdougall P.E.  
Contracts & Specifications Engineer

PROJECT NAME: LARGE CULVERT REHABILITATION  
 CULVERT #189339  
PROJECT LOCATION: ROUTE 9 BERWICK, ME  
AGENCY/MUNICIPALITY: MEDOT  
PROJECT JOB NO: WIN 23529.00P  
PREPARED FOR: STATE OF MAINE  
ENGINEER: MEDOT  
ENGINEER PROJ. NO: N/A  
JOB SPECIFICATIONS: SPECIAL PROVISION SECTION 534  
 PRECAST STRUCTURAL CONCRETE  
DRAWINGS: PLANS OF BERWICK ROUTE 9  
 SHEETS 1 & 2  
OTHER INFORMATION: N/A  
PREPARED BY: CONCRETE SYSTEMS INC.  
CSI JOB NO: C24839

| DRAWING INDEX |  |              |            |
|---------------|--|--------------|------------|
| SHEET NO.     | DESCRIPTION                              | REVISION NO. | REV. DATE  |
| 1             | TITLE SHEET                              | 1            | 04/22/2022 |
| 2             | BOX CULVERT LAYOUT PLAN & SIDE ELEVATION | 1            | 04/22/2022 |
| 3             | CULVERT END ELEVATION & TYPICAL DETAILS  | 1            | 04/22/2022 |
| 4             | INDIVIDUAL PIECE SHOP DRAWING A1         | 1            | 04/22/2022 |
| 5             | INDIVIDUAL PIECE SHOP DRAWING A2         | 0            | 04/01/2022 |
| 6             | INDIVIDUAL PIECE SHOP DRAWING A3         | 1            | 04/22/2022 |
| 7             | INDIVIDUAL PIECE SHOP DRAWING A4         | 1            | 04/22/2022 |
| 8             | INDIVIDUAL PIECE SHOP DRAWING A5         | 0            | 04/01/2022 |
| 9             | INDIVIDUAL PIECE SHOP DRAWING A6         | 1            | 04/22/2022 |
| 10            | INDIVIDUAL PIECE SHOP DRAWING TW1        | 0            | 04/01/2022 |

Contractor is to verify that all information shown on drawings has been thoroughly checked, complies with the contract documents and is adequate to meet the field conditions. Some dimensions and details may differ slightly from contract drawings to accommodate the manufacturing or design process. Approval of this drawing indicates that any deviation from the contract documents has been reviewed and found to be acceptable. Production will not commence until receipt of signed, approved shop drawings.

This drawing contains information proprietary to CONCRETE SYSTEMS, INC. This drawing is disclosed with the understanding that it will be retained in confidence and its use limited solely to the purpose for which it is disclosed. It is understood that no reproduction of this drawing is authorized without permission from CONCRETE SYSTEMS, INC. and that it will be returned to CONCRETE SYSTEMS, INC. upon request.



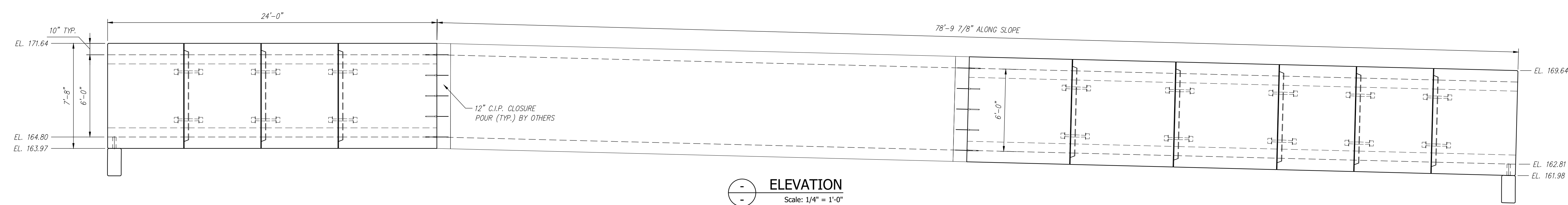
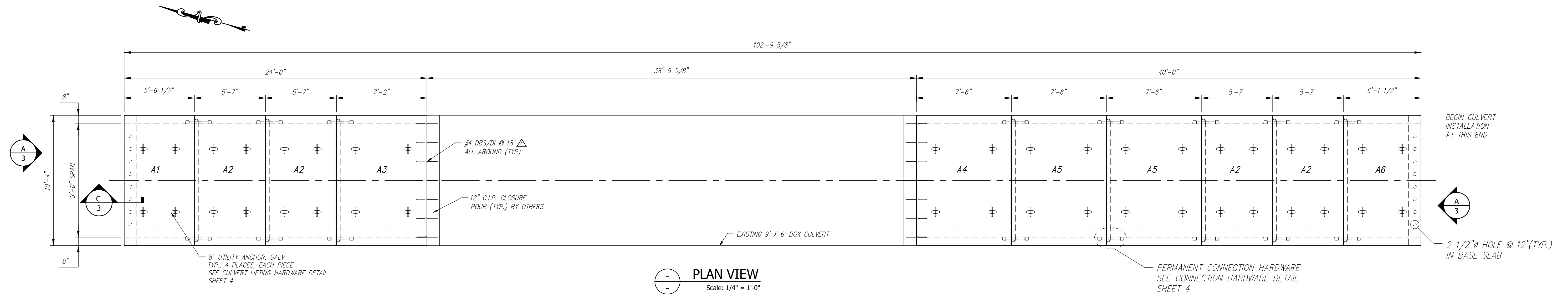
**CONCRETE SYSTEMS, INC.**  
 9 Commercial Street, Hudson, New Hampshire 03051  
 (800) 342-3374 (603) 889-4163  
 FAX (603) 889-0039 [www.csigroup.com](http://www.csigroup.com)

Stamp for structural design of precast only

STATE PROJECT NO. 23529.00P

- CULVERT GENERAL NOTES:**
- REFERENCE STANDARDS:  
AASHTO "LRFD BRIDGE DESIGN SPECIFICATIONS"  
ASTM C1577
  - DESIGN PARAMETERS:  
LIVE LOAD: HI-93 MAINE MODIFIED  
CONSTRUCTION LOADING WITH 18" MIN. FILL COVER.  
EARTH COVER: 2'-6"±  
CONCRETE: DESIGN STRENGTH F<sub>C</sub> = 5000 PSI  
UNIT WEIGHT = 150 PCF  
3 GAL/CY CORROSION INHIBITOR  
REINFORCING: ASTM A615 (REBAR), GRADE 60, BLACK  
SOIL: UNIT WEIGHT = 125 PCF  
MINIMUM LATERAL = 30 PCF  
MAXIMUM LATERAL = 60 PCF  
COVER TO REINFORCING: 2" OUTSIDE  
1 1/2" INSIDE
  - DIMENSIONS INCLUDE A 1/2" JOINT CREEP. OVERALL CULVERT LENGTH WILL VARY SLIGHTLY DEPENDING ON INSTALLATION.
  - MEMBRANE WATERPROOFING TO SUPPLIED AND APPLIED ON TOP AND 12" DOWN OF EXTERIOR SIDES OF STRUCTURE BY OTHERS.
  - DBS ARE DOWEL BAR SPLICERS AND DI ARE DOWEL INS. BOTH ARE SUPPLIED BY CSI.

| PIECE SCHEDULE (MX-FA5000SCC13) |     |        |      |            |
|---------------------------------|-----|--------|------|------------|
| MARK                            | QTY | LENGTH | YDS  | WEIGHT     |
| A1                              | 1   | 5.54'  | 5.22 | 10.58 TONS |
| A2                              | 4   | 5.17'  | 5.00 | 10.12 TONS |
| A3                              | 1   | 7.17'  | 6.80 | 13.77 TONS |
| A4                              | 1   | 7.50'  | 7.39 | 14.96 TONS |
| A5                              | 2   | 7.50'  | 7.25 | 14.69 TONS |
| A6                              | 1   | 6.13'  | 5.79 | 11.73 TONS |
| TW1                             | 2   | 10.33' | 0.77 | 7.55 TONS  |



Contractor is to verify that all information shown on drawings has been thoroughly checked, complies with the contract documents and is adequate to meet the field conditions. Some dimensions and details may differ slightly from contract drawings to accommodate the manufacturing or design process. Approval of this drawing indicates that any deviation from the contract documents has been reviewed and found to be acceptable. Production will not commence until receipt of signed, approved shop drawings.

This drawing contains information proprietary to CONCRETE SYSTEMS, INC. This drawing is disclosed with the understanding that it will be retained in confidence and its use limited solely to the purpose for which it is disclosed. It is understood that no reproduction of this drawing is authorized without permission from CONCRETE SYSTEMS, INC. and that it will be returned to CONCRETE SYSTEMS, INC. upon request.

| Rev. | Date       | DESCRIPTION       | By  |
|------|------------|-------------------|-----|
| 10   |            |                   |     |
| 9    |            |                   |     |
| 8    |            |                   |     |
| 7    |            |                   |     |
| 6    |            |                   |     |
| 5    |            |                   |     |
| 4    |            |                   |     |
| 3    |            |                   |     |
| 2    |            |                   |     |
| 1    | 04/22/2022 | SEE REV TRIANGLES | YAA |

This drawing is based upon information provided from the following documents and/or sources:

Engineer: MEDOT  
Project No: N/A  
Drawings: PLANS OF BERWICK ROUTE 9 SHEETS 1 & 2  
Specifications: SPECIAL PROVISION SECTION 534 PRECAST STRUCTURAL CONCRETE  
Other Sources: N/A

**Concrete Systems Inc.**  
9 Commercial St., Hudson, NH 03051  
Phone 603-889-4163  
Fax 603-889-2417

STATE AGENCY  
MEDOT

Drawn By: YAA Date: 02/18/2022  
Reviewed By: CMV Date: 03/16/2022  
Approved By: \_\_\_\_\_ Date: \_\_\_\_\_

STATE PROJECT NO. 23529.00P

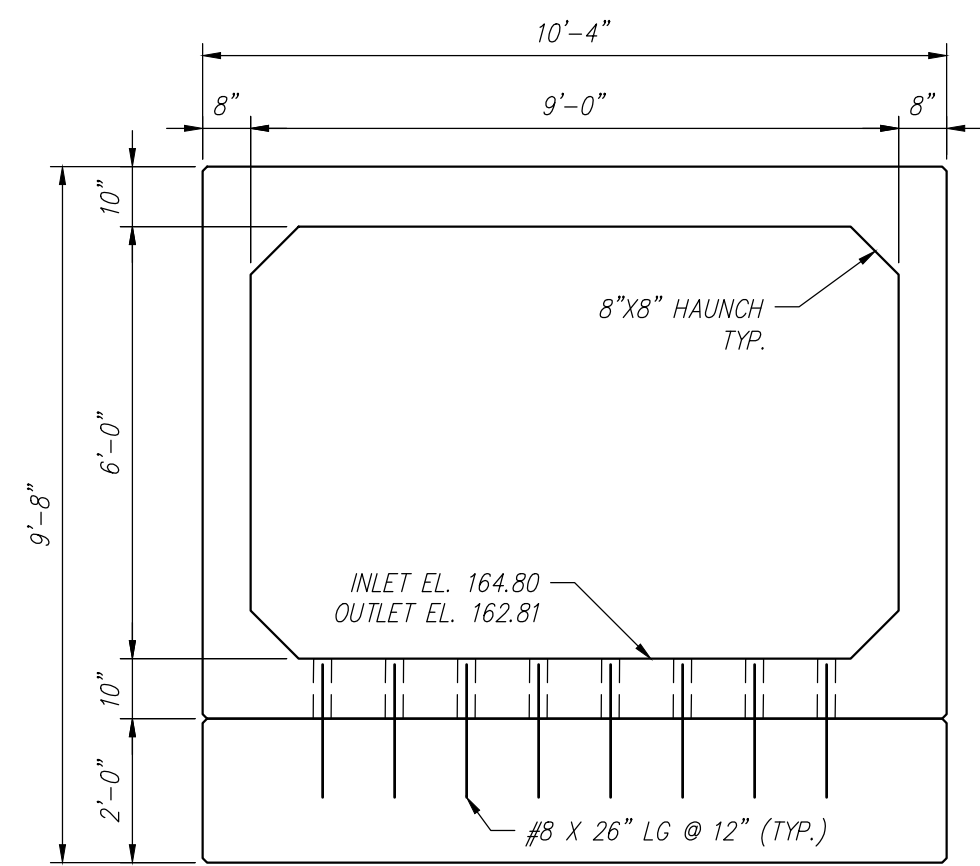
STATE OF MAINE  
LARGE CULVERT REHABILITATION  
ROUTE 9 BERWICK, ME

CULVERT LAYOUT PLAN & SIDE ELEVATION

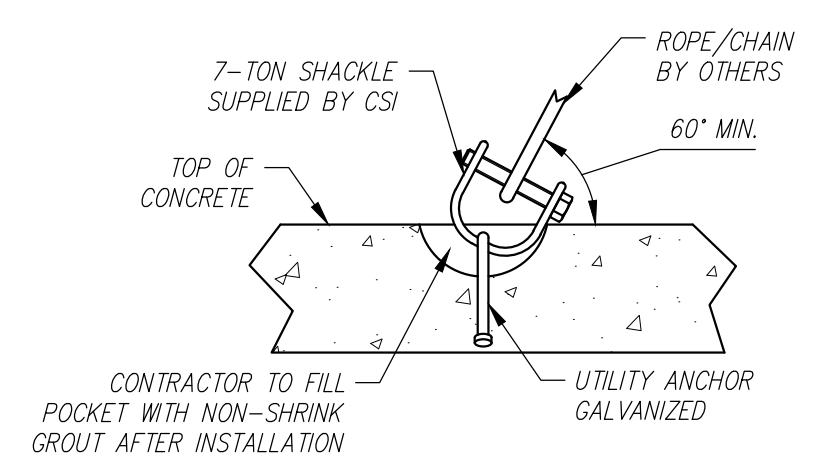
Drawing No. C24839-LO1

Quantity: - Project No: WIN 23529.00P SHEET 2 OF 10

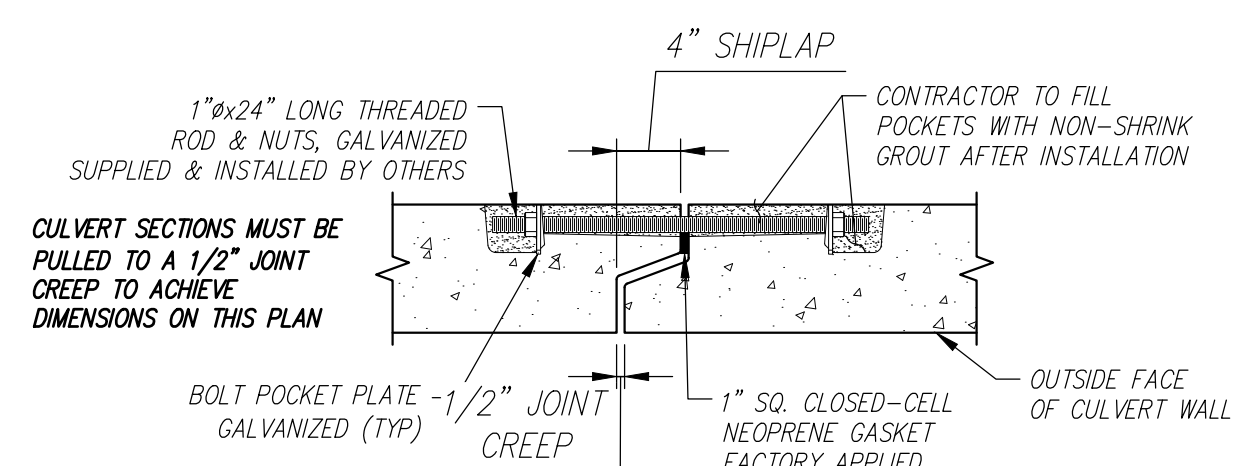
REV 1



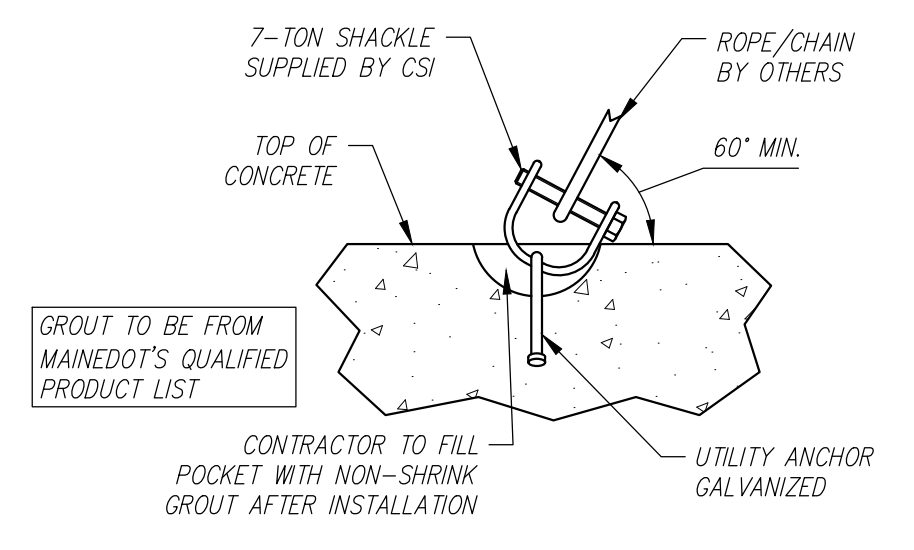
**A**  
**2** TYPICAL END ELEVATIONS  
SCALE: 3/8" = 1'-0"



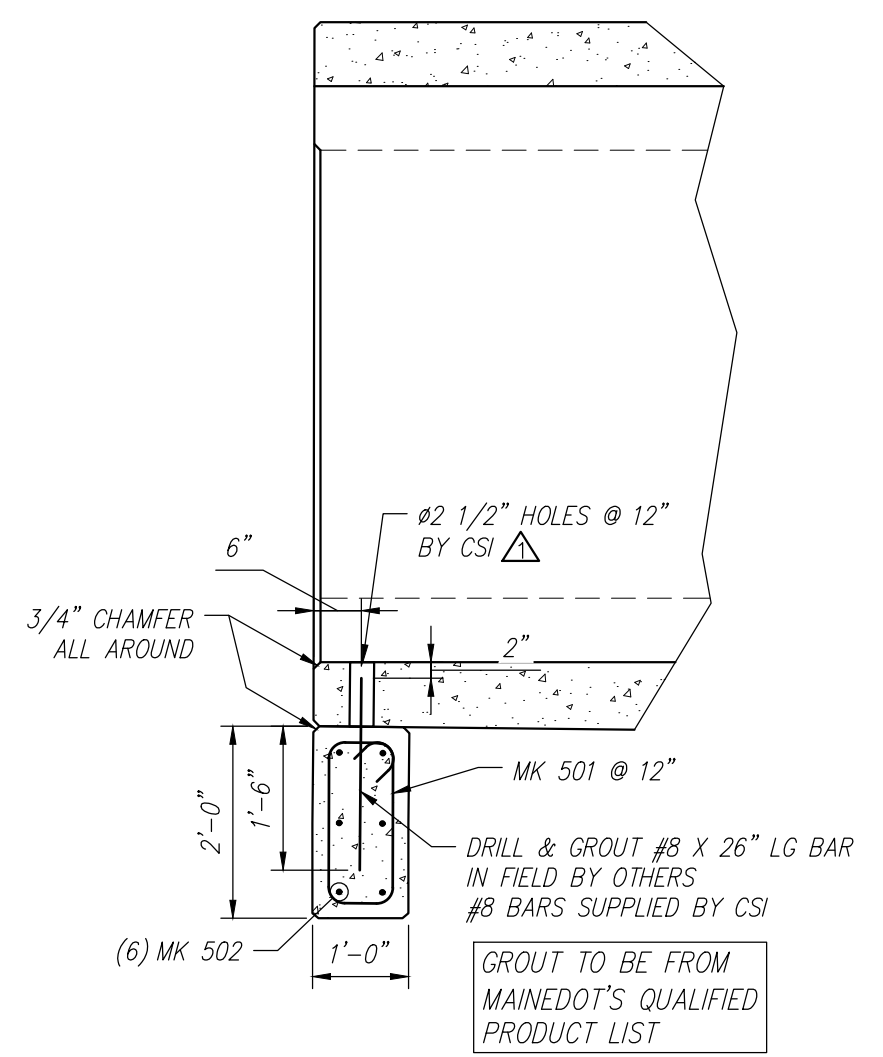
**-**  
**-** CULVERT LIFTING HARDWARE DETAIL  
SCALE: N.T.S.



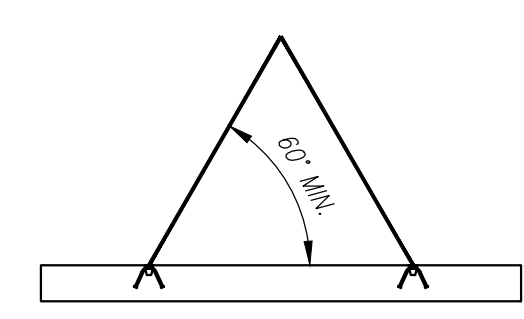
**-**  
**-** CULVERT JOINT DETAIL  
SCALE: N.T.S.



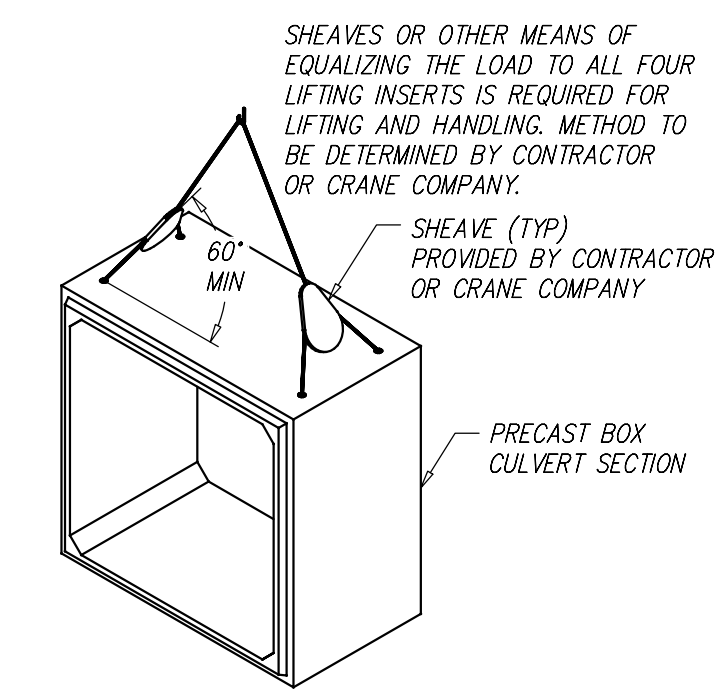
**-**  
**-** TOE WALL LIFTING HARDWARE DETAIL  
SCALE: N.T.S.



**C**  
**2** END SECTION  
SCALE: 1/2" = 1'-0"



**-**  
**-** TOE WALL LIFTING DETAIL  
SCALE: N.T.S.



**-**  
**-** CULVERT SHEAVE DETAIL  
SCALE: N.T.S.

Contractor is to verify that all information shown on drawings has been thoroughly checked, complies with the contract documents and is adequate to meet the field conditions. Some dimensions and details may differ slightly from contract drawings to accommodate the manufacturing or design process. Approval of this drawing indicates that any deviation from the contract documents has been reviewed and found to be acceptable. Production will not commence until receipt of signed, approved shop drawings.

This drawing contains information proprietary to CONCRETE SYSTEMS, INC. This drawing is disclosed with the understanding that it will be retained in confidence and its use limited solely to the purpose for which it is disclosed. It is understood that no reproduction of this drawing is authorized without permission from CONCRETE SYSTEMS, INC. and that it will be returned to CONCRETE SYSTEMS, INC. upon request.

| 10        |            |                  |     |
|-----------|------------|------------------|-----|
| 9         |            |                  |     |
| 8         |            |                  |     |
| 7         |            |                  |     |
| 6         |            |                  |     |
| 5         |            |                  |     |
| 4         |            |                  |     |
| 3         |            |                  |     |
| 2         |            |                  |     |
| 1         | 04/22/2022 | SEE REV TRIANGLE | YAA |
| Rev.      | Date       | DESCRIPTION      | By  |
| REVISIONS |            |                  |     |

This drawing is based upon information provided from the following documents and/or sources:

Engineer: MEDOT  
Project No: N/A  
Drawings: PLANS OF BERWICK ROUTE 9 SHEETS 1 & 2  
Specifications: SPECIAL PROVISION SECTION 534 PRECAST STRUCTURAL CONCRETE  
Other Sources: N/A

**CSI**  
Concrete Systems Inc.  
9 Commercial St., Hudson, NH 03051  
Phone 603-889-4163  
Fax 603-889-2417

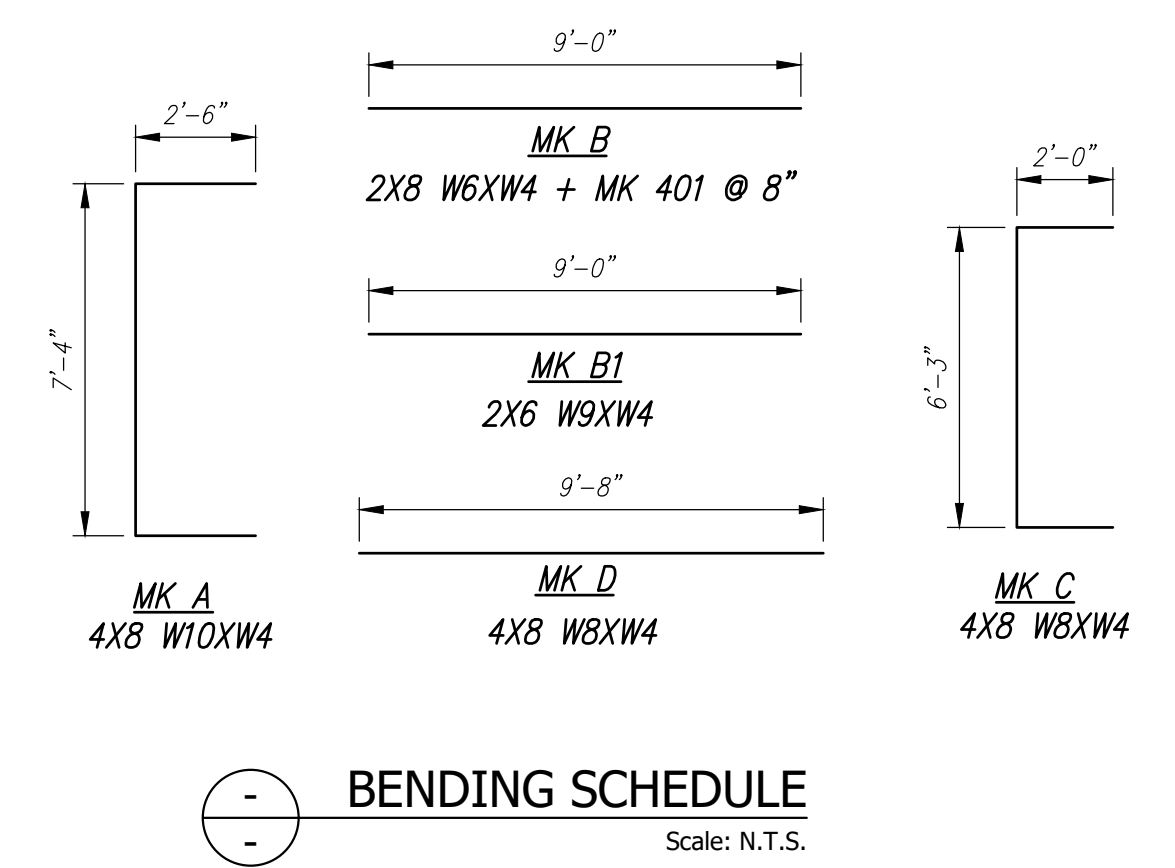
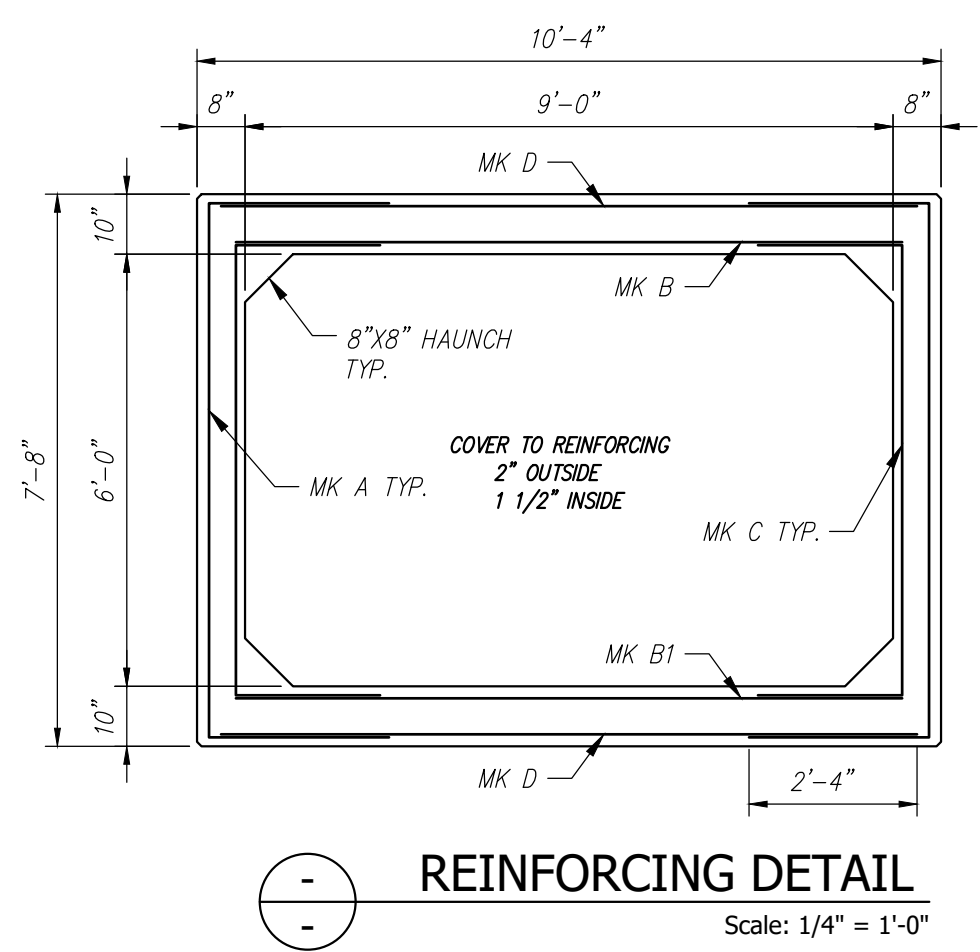
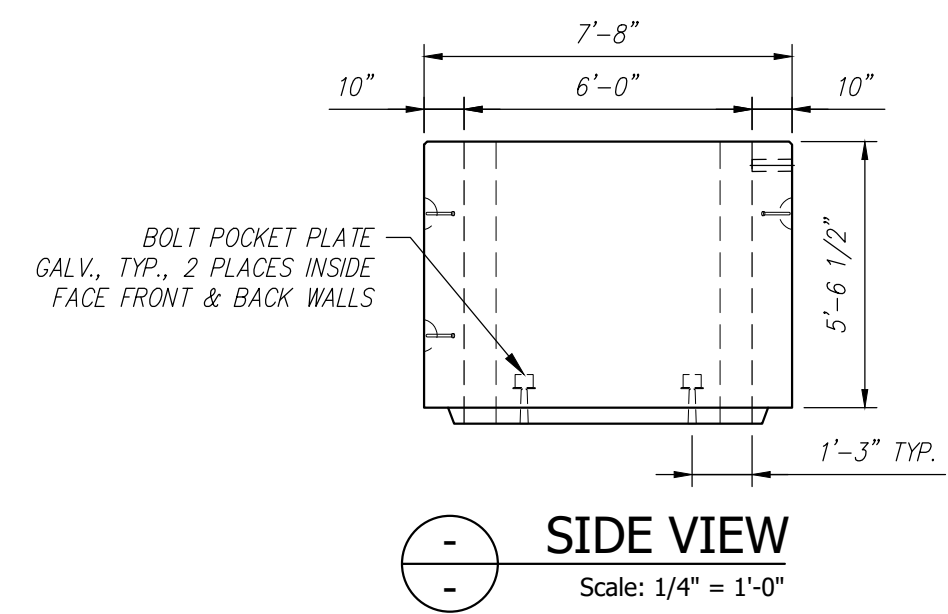
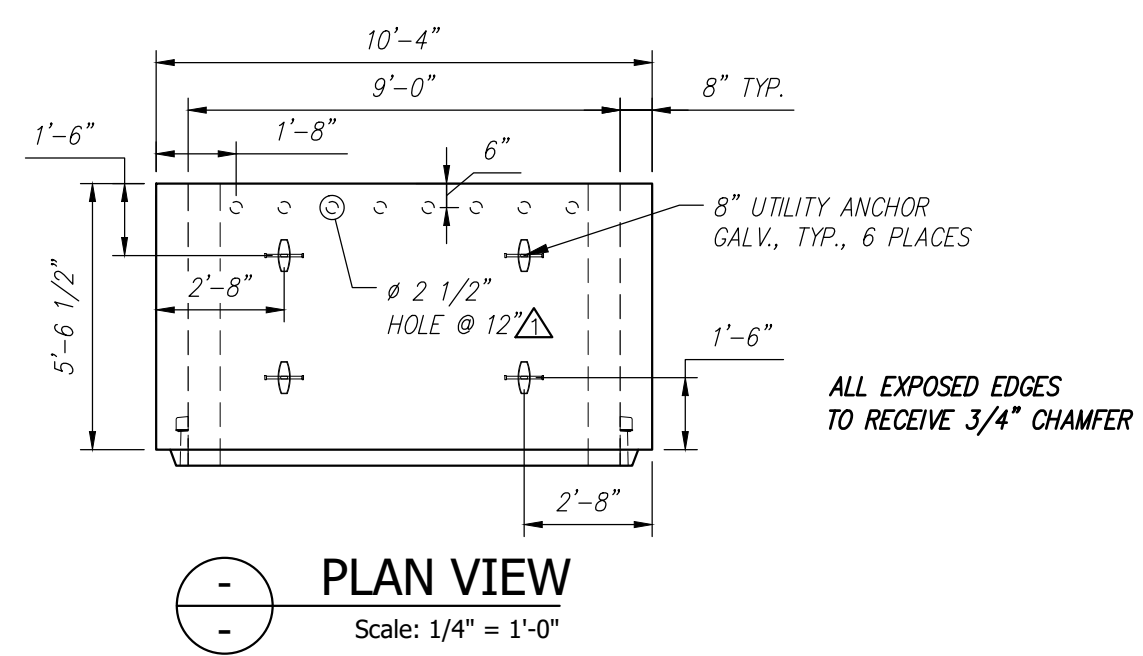
| STATE AGENCY |            |
|--------------|------------|
| MEDOT        |            |
| Drawn By     | Date       |
| YAA          | 02/18/2022 |
| Reviewed By  | Date       |
| CMV          | 03/16/2022 |
| Approved By  | Date       |
|              |            |

| STATE PROJECT NO. 23529.00P   |   |         |       |
|---|---|---------|-------|
| STATE OF MAINE<br>LARGE CULVERT REHABILITATION<br>ROUTE 9 BERWICK, ME |   |         |       |
| D   | Drawing No.                             | REV     | 1     |
|   | CULVERT END ELEVATION & TYPICAL DETAILS |         |       |
|   | C24839--DET1                            |         |       |
| Quantity: --  | Project No: WIN 23529.00P               | SHEET 3 | OF 10 |

| Culvert Rebar Schedule |     |        |
|------------------------|-----|--------|
| MK                     | QTY | LENGTH |
| 401 #4                 | 8   | 9'-0"  |

| A1 - BILL OF MATERIALS / EMBEDS |  |      |    |                    |
|---------------------------------|--|------|----|--------------------|
| CSI ID#                         | DESCRIPTION                              | QTY  | UM | COMMENTS           |
| DTJ                             | 2.5" PVC                                 | 6.67 | FT |                    |
| EM-00115                        | 8" UTILITY ANCHOR - GALVANIZED           | 6    | EA | ALP #LUA86G OR EQ. |
| EM-00125                        | BOLT POCKET PLATES (GALVANIZED)          | 4    | EA |                    |
| RM-00013                        | REBAR #4 BLACK - GR 60                   | 48   | LB |                    |
| RM-00098                        | WIRE MESH ALL SIZES                      | 756  | LB | TOTAL WEIGHT       |
| MX-FA5000SCC13                  | MIX DESIGN - FLY ASH 5000 SELF COMPACTIN | 5.22 | CY |                    |

SHIP LOOSE  
(8) #8 X 26" LG



|  |      |             |                   |     |
|--|------|-------------|-------------------|-----|
| <p>Contractor is to verify that all information shown on drawings has been thoroughly checked, complies with the contract documents and is adequate to meet the field conditions. Some dimensions and details may differ slightly from contract drawings to accommodate the manufacturing or design process. Approval of this drawing indicates that any deviation from the contract documents has been reviewed and found to be acceptable. Production will not commence until receipt of signed, approved shop drawings.</p> <p>This drawing contains information proprietary to CONCRETE SYSTEMS, INC. This drawing is disclosed with the understanding that it will be retained in confidence and its use limited solely to the purpose for which it is disclosed. It is understood that no reproduction of this drawing is authorized without permission from CONCRETE SYSTEMS, INC. and that it will be returned to CONCRETE SYSTEMS, INC. upon request.</p> | 10   |             |                   |     |
|  | 9    |             |                   |     |
|  | 8    |             |                   |     |
|  | 7    |             |                   |     |
|  | 6    |             |                   |     |
|  | 5    |             |                   |     |
|  | 4    |             |                   |     |
|  | 3    |             |                   |     |
|  | 2    |             |                   |     |
|  | 1    | 04/22/2022  | SEE REV TRIANGLES | YAA |
| Rev.   | Date | DESCRIPTION | By                |     |
| REVISIONS  |      |             |                   |     |

This drawing is based upon information provided from the following documents and/or sources:

Engineer: MEDOT  
Project No: N/A  
Drawings: PLANS OF BERWICK ROUTE 9 SHEETS 1 & 2  
Specifications: SPECIAL PROVISION SECTION 534 PRECAST STRUCTURAL CONCRETE  
Other Sources: N/A

**CSI**  
Concrete Systems Inc.  
9 Commercial St., Hudson, NH 03051  
Phone 603-889-4163  
Fax 603-889-2417

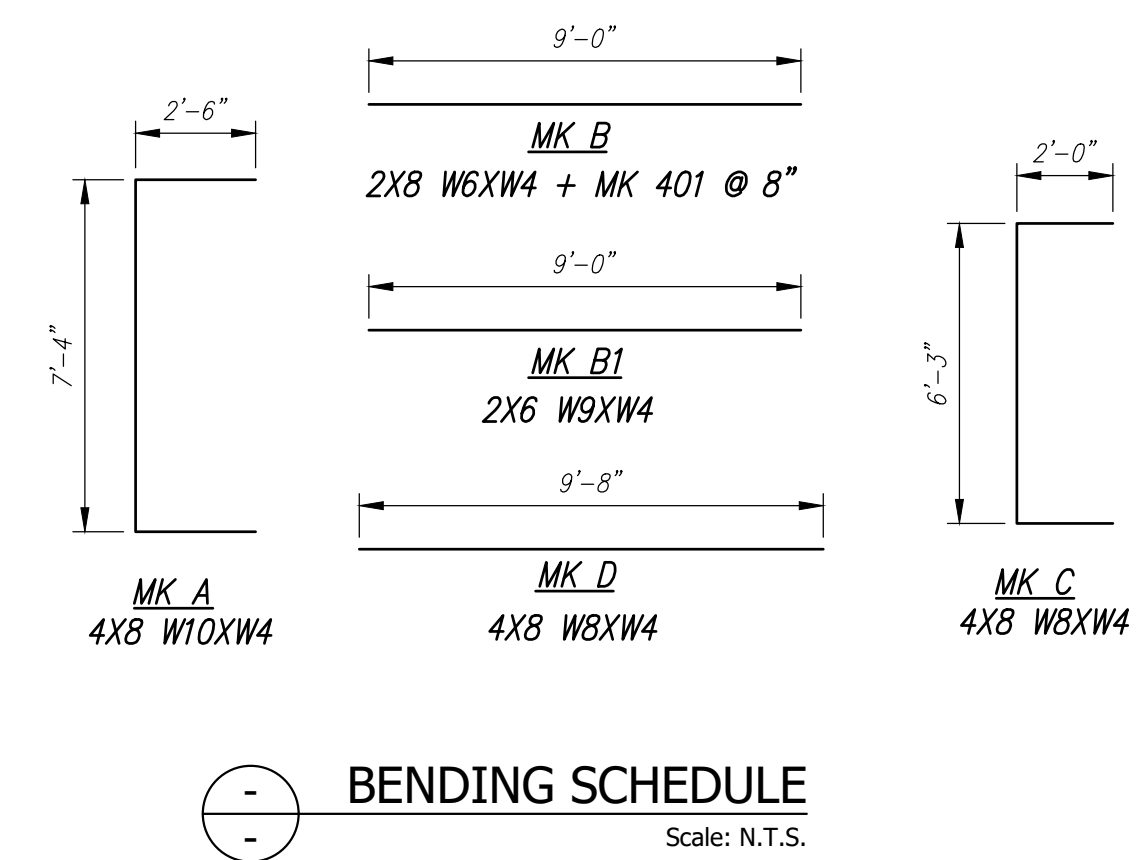
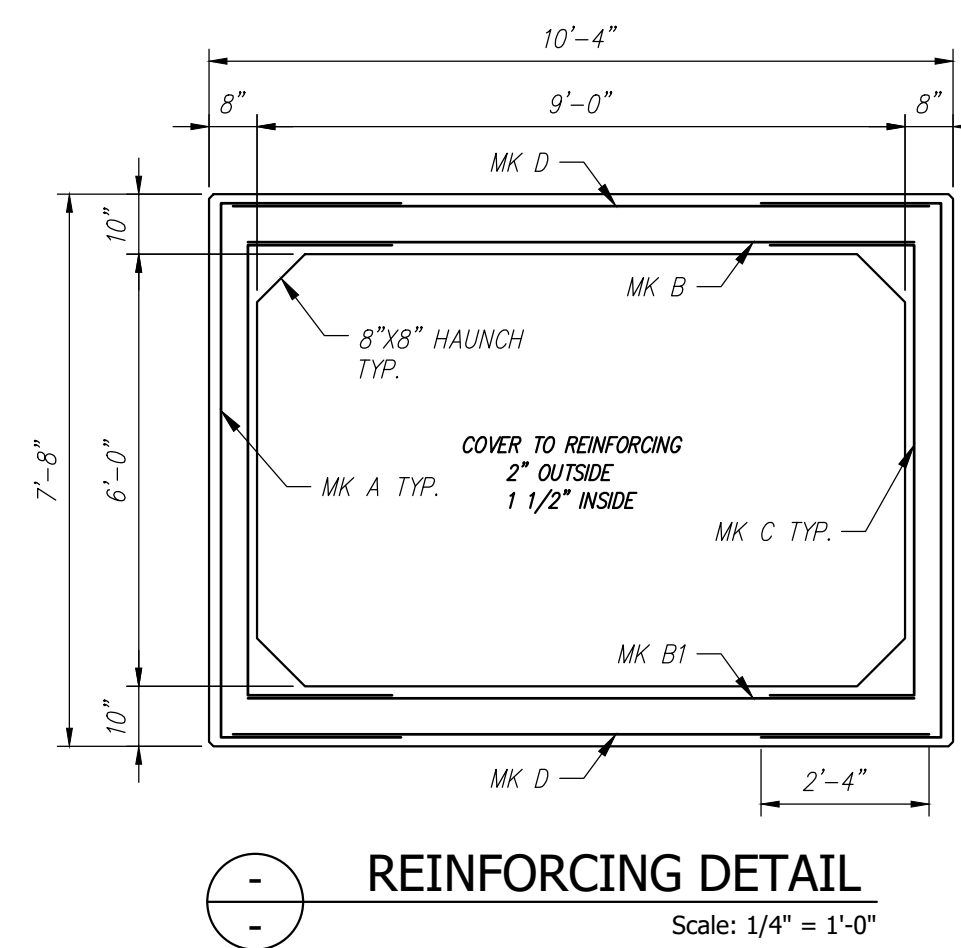
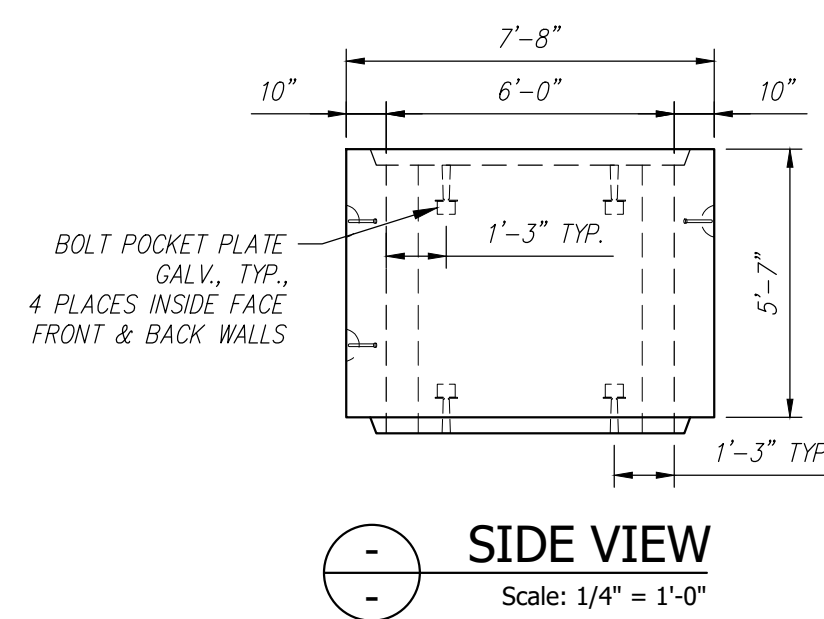
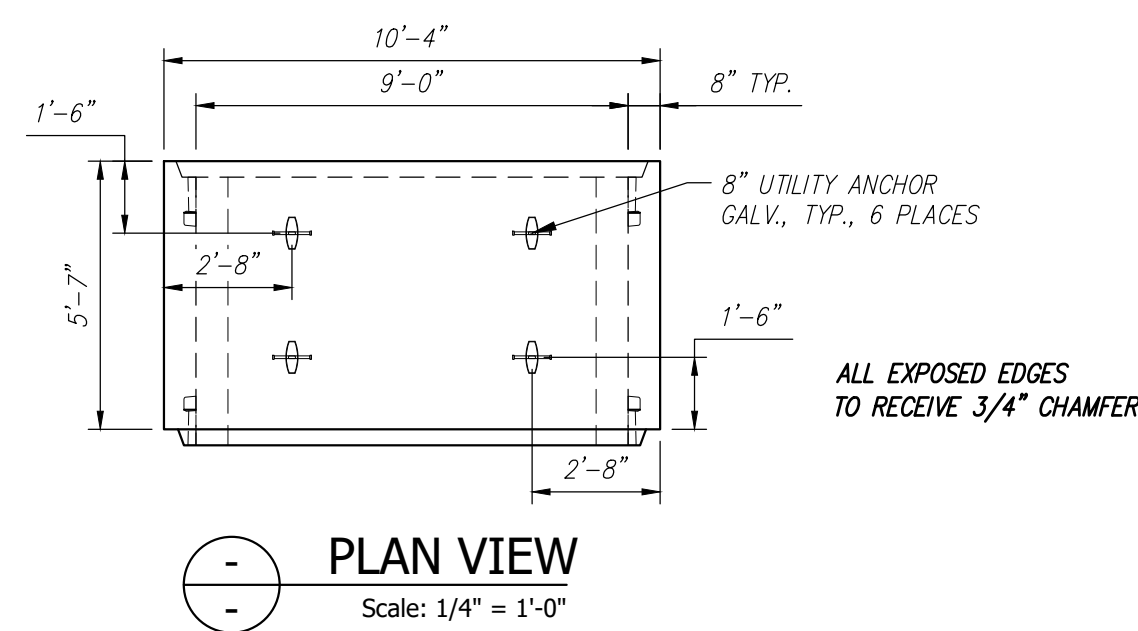
|              |            |
|--------------|------------|
| STATE AGENCY |            |
| MEDOT        |            |
| Drawn By     | Date       |
| YAA          | 03/17/2022 |
| Reviewed By  | Date       |
| CMV          | 04/01/2022 |
| Approved By  | Date       |

|   |                                  |
|---|----------------------------------|
| STATE PROJECT NO. 23529.00P   |                                  |
| STATE OF MAINE<br>LARGE CULVERT REHABILITATION<br>ROUTE 9 BERWICK, ME |                                  |
| D   | INDIVIDUAL PIECE SHOP DRAWING A1 |
| Drawing No.   | C24839-A1                        |
| Quantity: 1   | Project No: WIN 23529.00P        |
| SHEET 4 OF 10   |                                  |

REV 1

| Culvert Rebar Schedule |     |        |
|------------------------|-----|--------|
| MK                     | QTY | LENGTH |
| 401 #4                 | 8   | 9' 0"  |

| A2 - BILL OF MATERIALS / EMBEDS |  |      |    |                    |
|---------------------------------|--|------|----|--------------------|
| CSI ID#                         | DESCRIPTION                              | QTY  | UM | COMMENTS           |
| EM-00115                        | 8" UTILITY ANCHOR - GALVANIZED           | 6    | EA | ALP #LUA86G OR EQ. |
| EM-00125                        | BOLT POCKET PLATES (GALVANIZED)          | 8    | EA |                    |
| RM-00013                        | REBAR #4 BLACK- GR 60                    | 48   | LB |                    |
| JS-00002                        | 1"X1"CLOSED NEOP GASKET                  | 32   | FT | AROUND BELL        |
| RM-00098                        | WIRE MESH ALL SIZES                      | 756  | LB | TOTAL WEIGHT       |
| MK-FA5000SCCJ3                  | MIX DESIGN - FLY ASH 5000 SELF COMPACTIN | 5.00 | CY |                    |



Contractor is to verify that all information shown on drawings has been thoroughly checked, complies with the contract documents and is adequate to meet the field conditions. Some dimensions and details may differ slightly from contract drawings to accommodate the manufacturing or design process. Approval of this drawing indicates that any deviation from the contract documents has been reviewed and found to be acceptable. Production will not commence until receipt of signed, approved shop drawings.

This drawing contains information proprietary to CONCRETE SYSTEMS, INC. This drawing is disclosed with the understanding that it will be retained in confidence and its use limited solely to the purpose for which it is disclosed. It is understood that no reproduction of this drawing is authorized without permission from CONCRETE SYSTEMS, INC. and that it will be returned to CONCRETE SYSTEMS, INC. upon request.

| Rev.      | Date | DESCRIPTION | By |
|-----------|------|-------------|----|
| 10        |      |             |    |
| 9         |      |             |    |
| 8         |      |             |    |
| 7         |      |             |    |
| 6         |      |             |    |
| 5         |      |             |    |
| 4         |      |             |    |
| 3         |      |             |    |
| 2         |      |             |    |
| 1         |      |             |    |
| Rev.      | Date | DESCRIPTION | By |
| REVISIONS |      |             |    |

This drawing is based upon information provided from the following documents and/or sources:

Engineer: MEDOT  
 Project No: N/A  
 Drawings: PLANS OF BERWICK ROUTE 9 SHEETS 1 & 2  
 Specifications: SPECIAL PROVISION SECTION 534 PRECAST STRUCTURAL CONCRETE  
 Other Sources: N/A

**CSI**  
 Concrete Systems Inc.  
 9 Commercial St., Hudson, NH, 03051  
 Phone 603-889-4163  
 Fax 603-889-2417

STATE AGENCY  
 MEDOT

Drawn By: YAA Date: 03/17/2022  
 Reviewed By: CMV Date: 04/01/2022  
 Approved By: \_\_\_\_\_ Date: \_\_\_\_\_

STATE PROJECT NO. 23529.00P

STATE OF MAINE  
 LARGE CULVERT REHABILITATION  
 ROUTE 9 BERWICK, ME

INDIVIDUAL PIECE SHOP DRAWING A2  
 C24839-A2

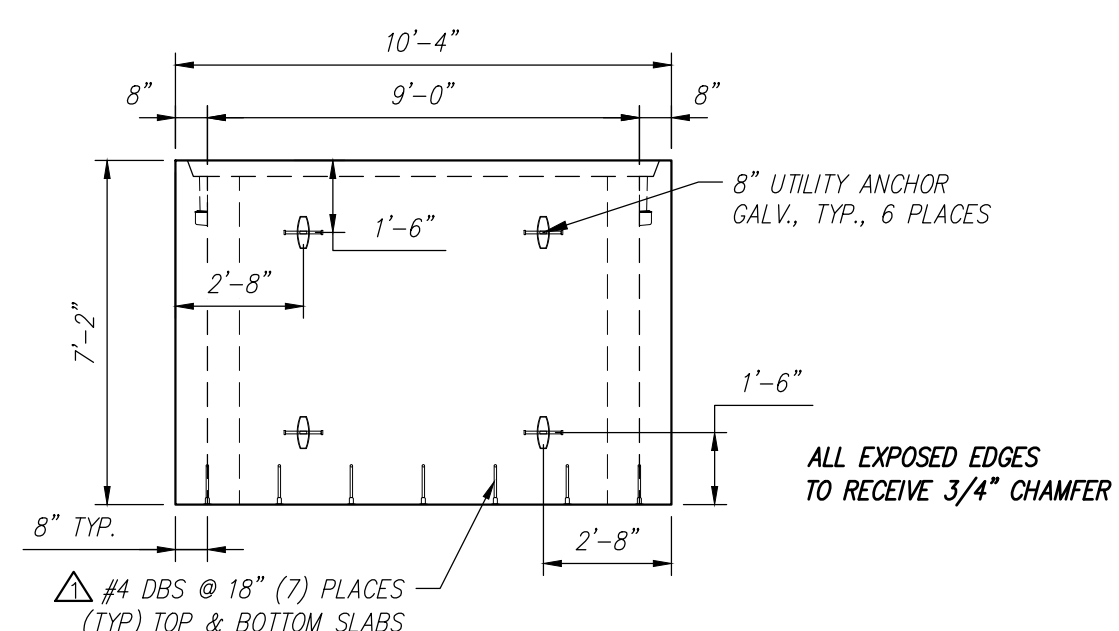
Quantity: 4 Project No: WIN 23529.00P SHEET 5 OF 10

REV 0

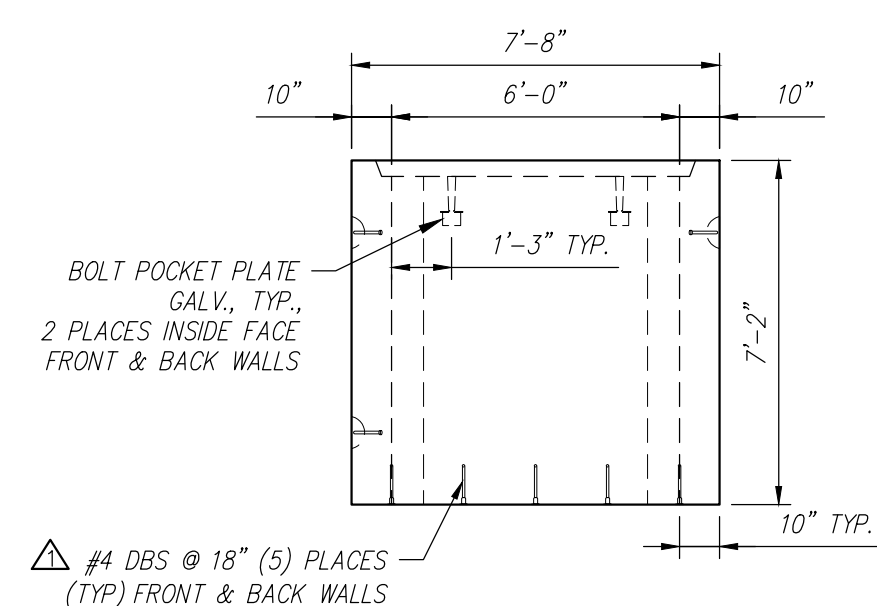
| Culvert Rebar Schedule |     |        |
|------------------------|-----|--------|
| MK                     | QTY | LENGTH |
| 401 #4                 | 11  | 9'-0"  |

| A3 - BILL OF MATERIALS / EMBEDS |  |      |                       |
|---------------------------------|--|------|-----------------------|
| CSI ID#                         | DESCRIPTION                              | QTY  | UM/COMMENTS           |
| EM-00115                        | 8" UTILITY ANCHOR - GALVANIZED           | 6    | EA ALP #LU486G OR EQ. |
| EM-00010                        | DBSAE #4 X 18" BLACK                     | 44   | EA DOWEL BAR SPLICER  |
| EM-00125                        | BOLT POCKET PLATES (GALVANIZED)          | 4    | EA                    |
| RM-00013                        | REBAR #4 BLACK- GR 60                    | 66   | LB                    |
| JS-00002                        | 1"X1" CLOSED NEOP GASKET                 | 32   | FT AROUND BELL        |
| RM-00098                        | WIRE MESH ALL SIZES                      | 756  | LB TOTAL WEIGHT       |
| MX-FA5000SCC13                  | MIX DESIGN - FLY ASH 5000 SELF COMPACTIN | 6.80 | CY                    |

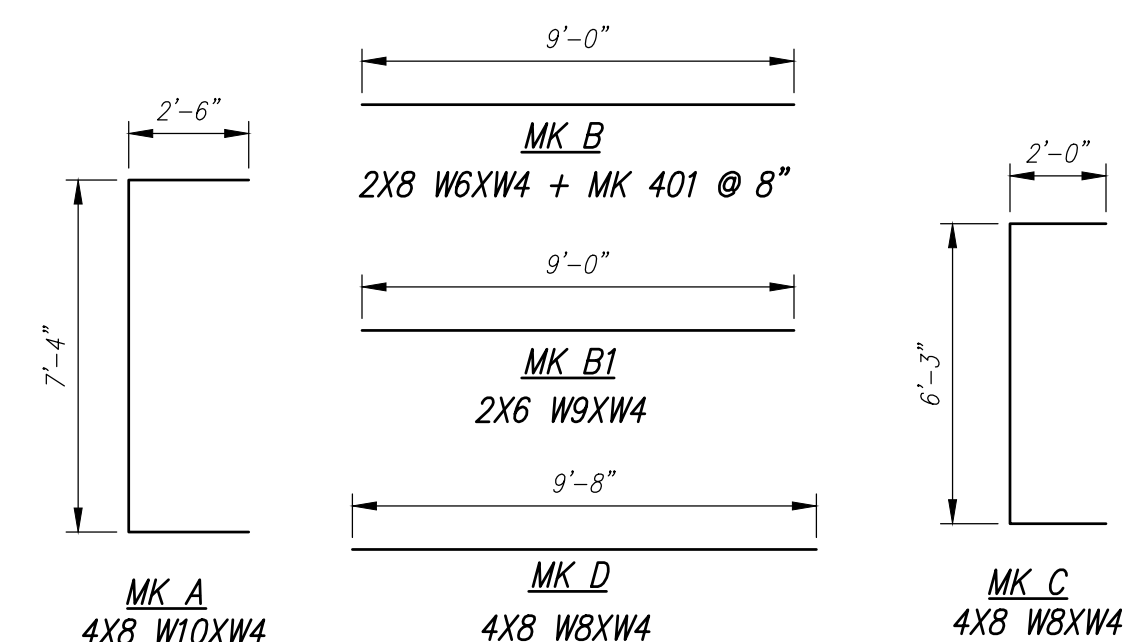
SHIP LOOSE  
(44) EM-00018 #D1 X 18" PLAIN



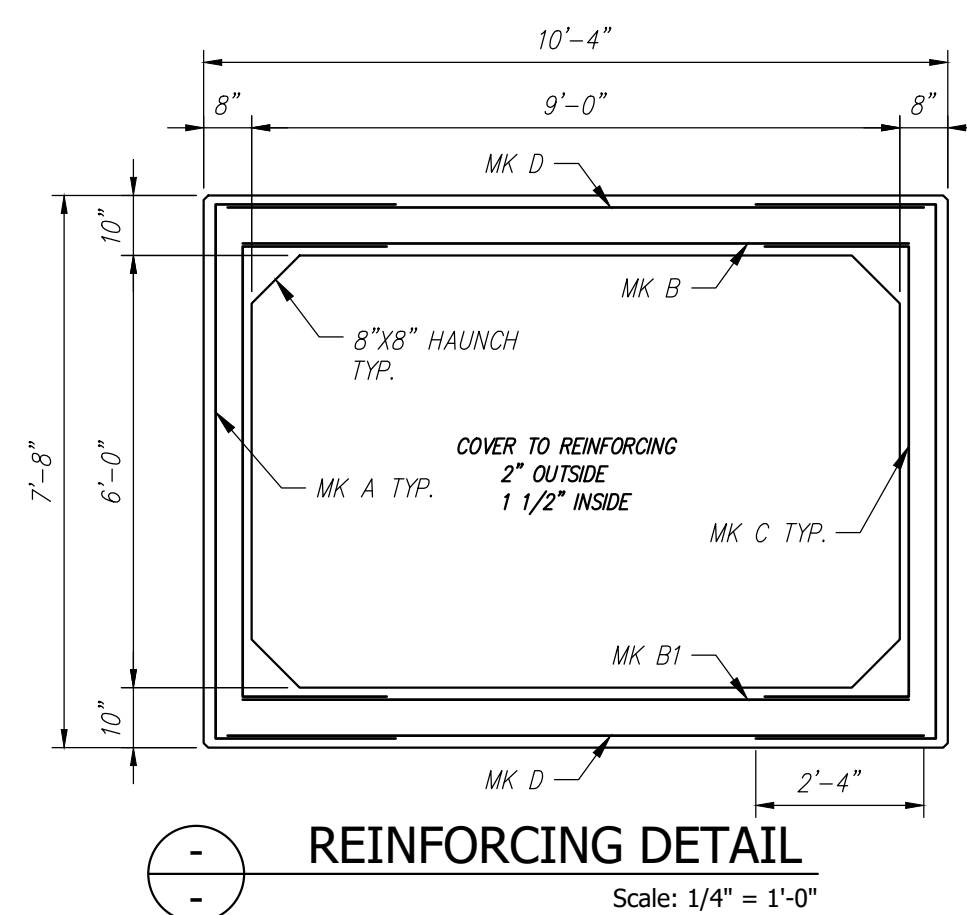
PLAN VIEW  
Scale: 1/4" = 1'-0"



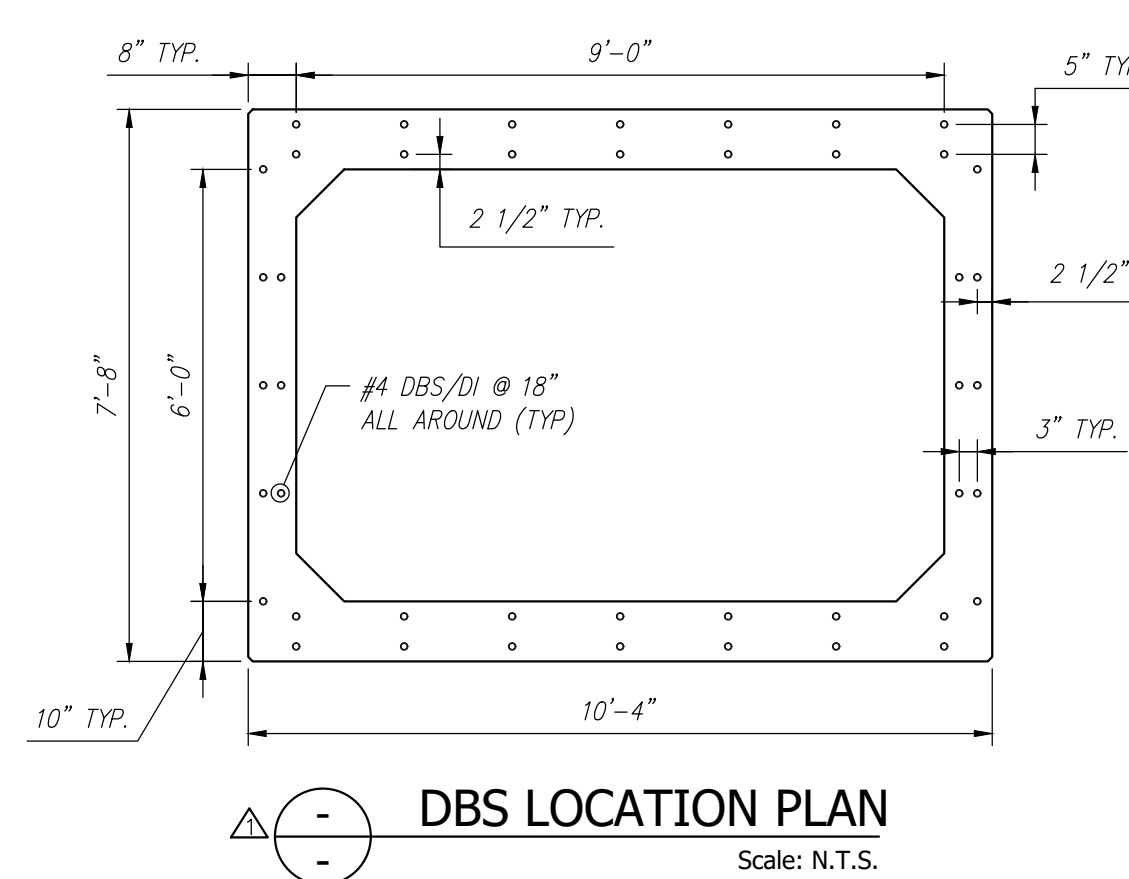
SIDE VIEW  
Scale: 1/4" = 1'-0"



BENDING SCHEDULE  
Scale: N.T.S.



REINFORCING DETAIL  
Scale: 1/4" = 1'-0"



DBS LOCATION PLAN  
Scale: N.T.S.

Contractor is to verify that all information shown on drawings has been thoroughly checked, complies with the contract documents and is adequate to meet the field conditions. Some dimensions and details may differ slightly from contract drawings to accommodate the manufacturing or design process. Approval of this drawing indicates that any deviation from the contract documents has been reviewed and found to be acceptable. Production will not commence until receipt of signed, approved shop drawings.

This drawing contains information proprietary to CONCRETE SYSTEMS, INC. This drawing is disclosed with the understanding that it will be retained in confidence and its use limited solely to the purpose for which it is disclosed. It is understood that no reproduction of this drawing is authorized without permission from CONCRETE SYSTEMS, INC. and that it will be returned to CONCRETE SYSTEMS, INC. upon request.

| Rev. | Date       | DESCRIPTION            | By  |
|------|------------|------------------------|-----|
| 10   |            |                        |     |
| 9    |            |                        |     |
| 8    |            |                        |     |
| 7    |            |                        |     |
| 6    |            |                        |     |
| 5    |            |                        |     |
| 4    |            |                        |     |
| 3    |            |                        |     |
| 2    |            |                        |     |
| 1    | 04/22/2022 | ADD DBS's & REVISE BOM | YAA |

This drawing is based upon information provided from the following documents and/or sources:  
 Engineer: MEDOT  
 Project No: N/A  
 Drawings: PLANS OF BERWICK ROUTE 9  
 SHEETS 1 & 2  
 Specifications: SPECIAL PROVISION SECTION 534  
 PRECAST STRUCTURAL CONCRETE  
 Other Sources: N/A

**CSI**  
 Concrete Systems Inc.  
 9 Commercial St., Hudson, NH, 03051  
 Phone 603-889-4163  
 Fax 603-889-2417

| STATE AGENCY |            |
|--------------|------------|
| MEDOT        |            |
| Drawn By     | YAA        |
| Date         | 03/17/2022 |
| Reviewed By  | CMV        |
| Date         | 04/01/2022 |
| Approved By  |            |

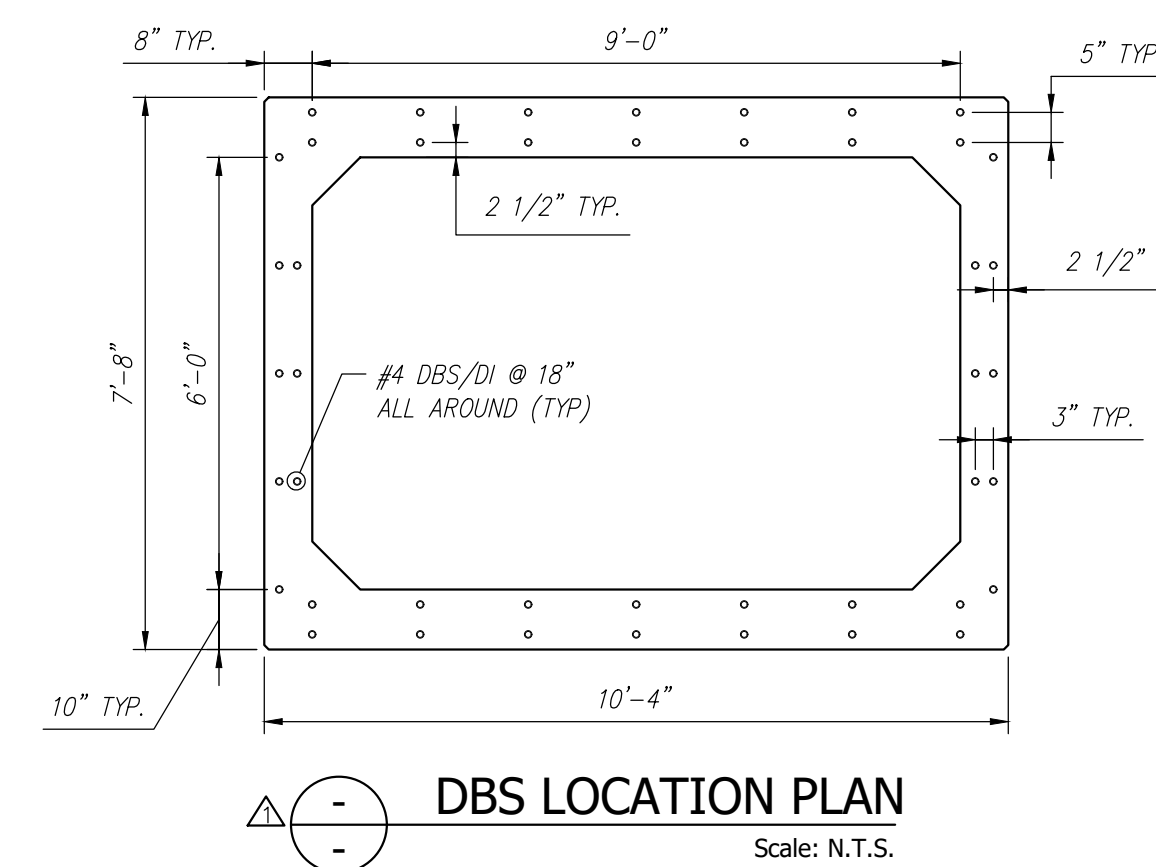
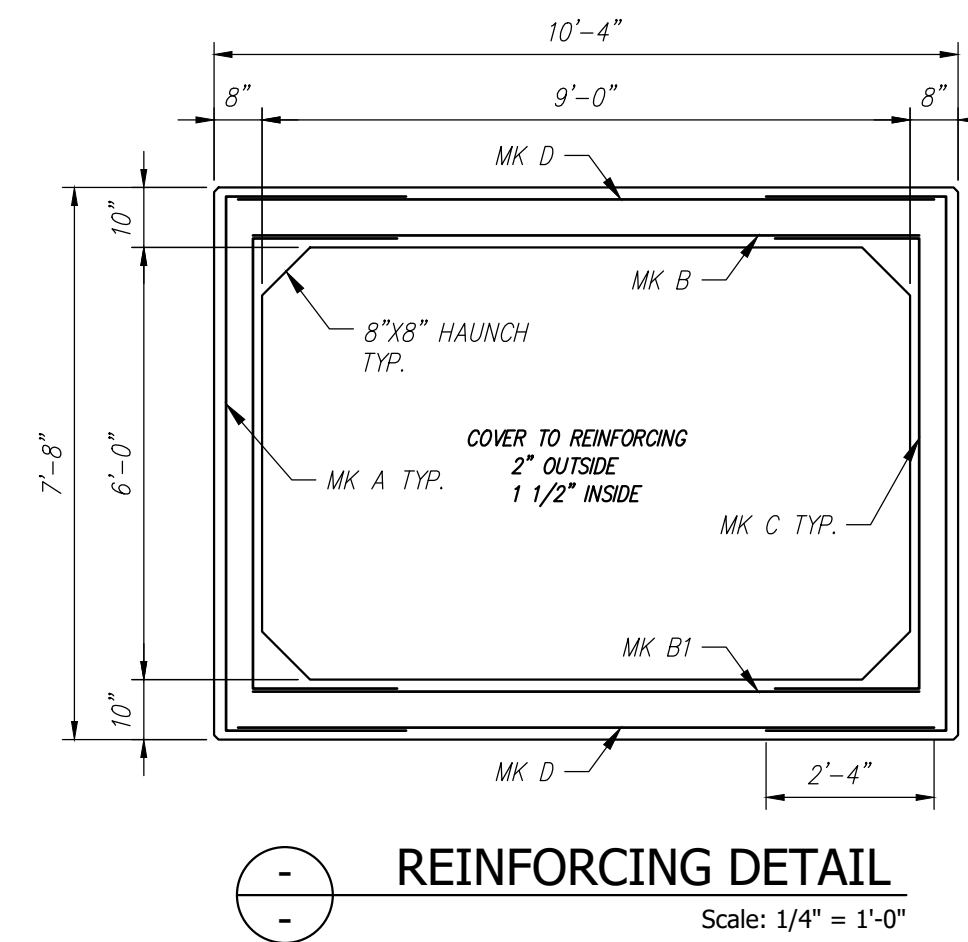
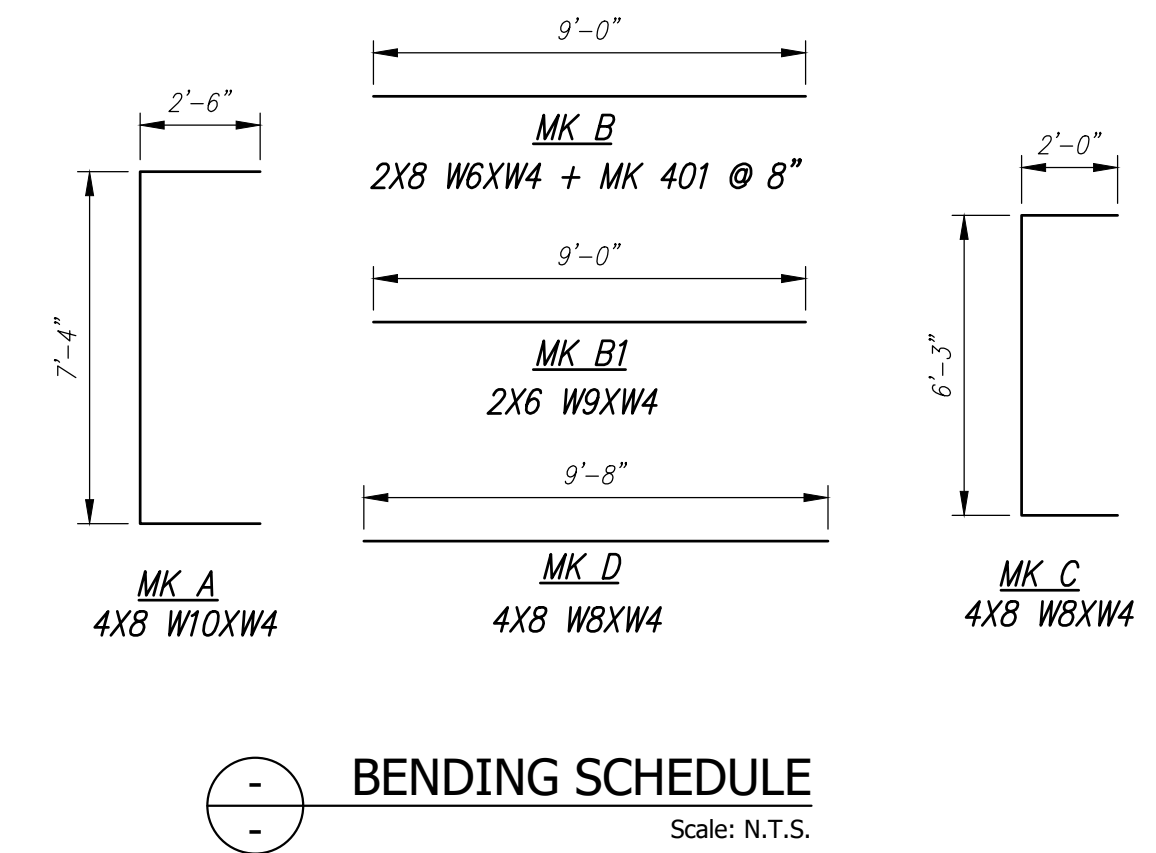
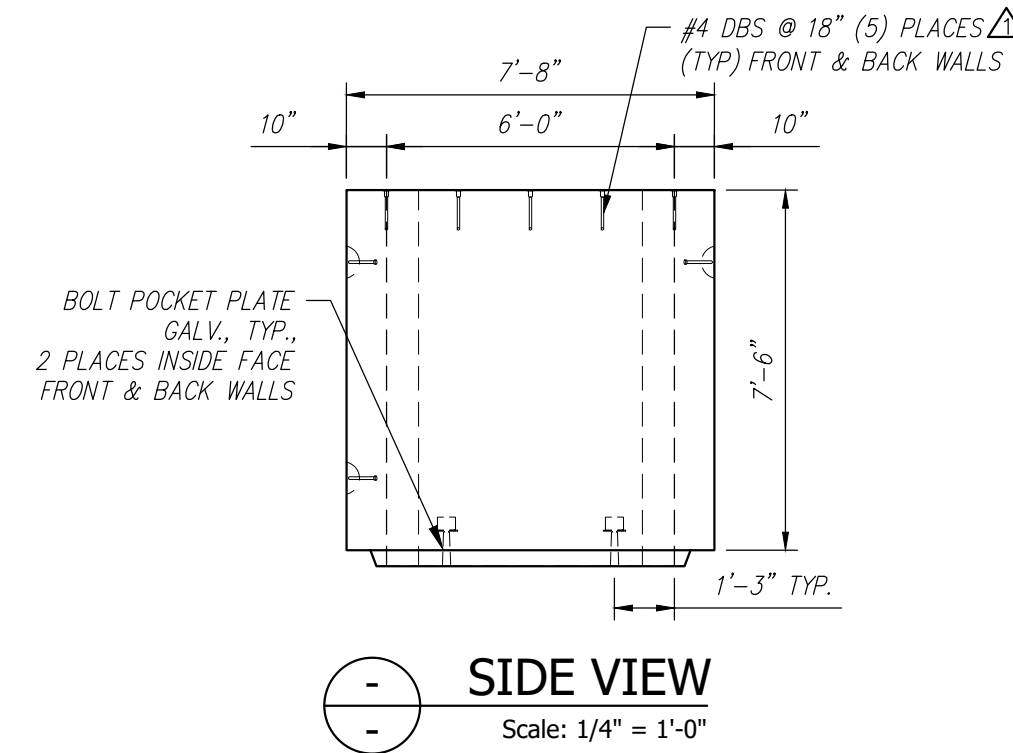
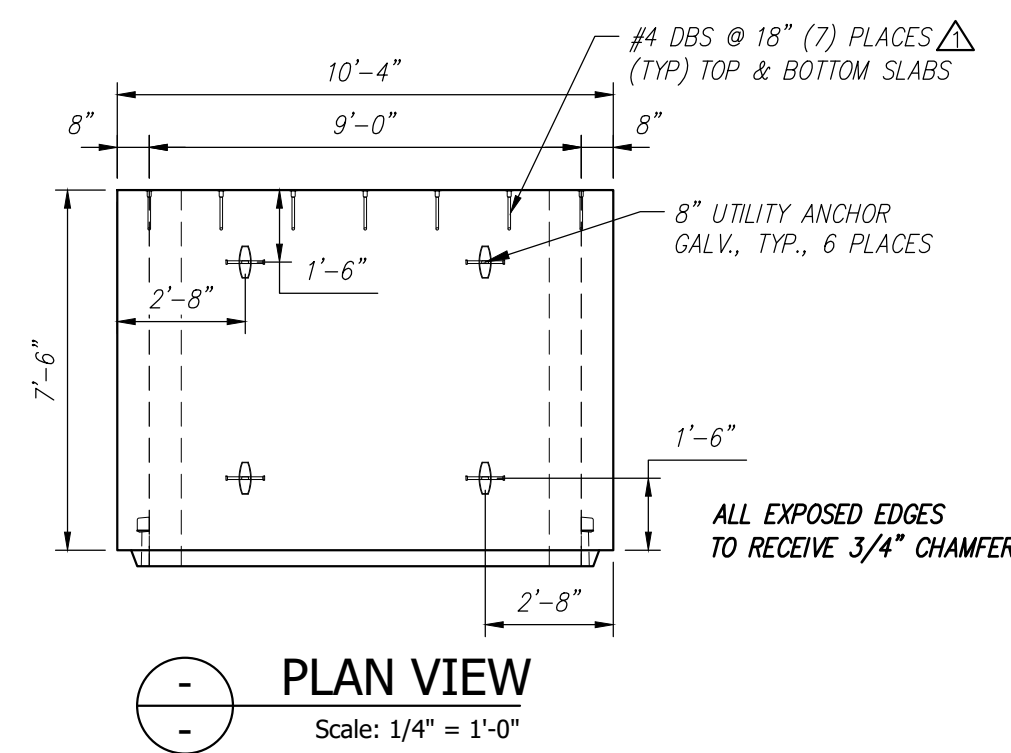
| STATE PROJECT NO. 23529.00P   |                                  |
|---|----------------------------------|
| STATE OF MAINE<br>LARGE CULVERT REHABILITATION<br>ROUTE 9 BERWICK, ME |                                  |
| D   | INDIVIDUAL PIECE SHOP DRAWING A3 |
| Drawing No.   | C24839-A3                        |
| Quantity: 1   | Project No: WIN 23529.00P        |
| SHEET 6 OF 10   |                                  |

REV 1

| Culvert Rebar Schedule |     |        |
|------------------------|-----|--------|
| MK                     | QTY | LENGTH |
| 401 #4                 | 11  | 9'-0"  |

| A4 - BILL OF MATERIALS / EMBEDS |  |      |    |                    |
|---------------------------------|--|------|----|--------------------|
| CSI ID#                         | DESCRIPTION                              | QTY  | UM | COMMENTS           |
| EM-00115                        | 8" UTILITY ANCHOR - GALVANIZED           | 6    | EA | ALP #LUA86G OR EQ. |
| EM-00010                        | DBSAE #4 X 18" BLACK                     | 44   | EA | DOWEL BAR SPLICER  |
| EM-00125                        | BOLT POCKET PLATES (GALVANIZED)          | 4    | EA |                    |
| RM-00013                        | REBAR #4 BLACK- GR 60                    | 66   | LB |                    |
| JS-00002                        | 1"X1" CLOSED NEOP GASKET                 | 32   | FT | AROUND BELL        |
| RM-00098                        | WIRE MESH ALL SIZES                      | 756  | LB | TOTAL WEIGHT       |
| MX-FA5000SCC13                  | MIX DESIGN - FLY ASH 5000 SELF COMPACTIN | 7.39 | CY |                    |

△ SHIP LOOSE  
(44) EM-00018 #D1 X 18" PLAIN



Contractor is to verify that all information shown on drawings has been thoroughly checked, complies with the contract documents and is adequate to meet the field conditions. Some dimensions and details may differ slightly from contract drawings to accommodate the manufacturing or design process. Approval of this drawing indicates that any deviation from the contract documents has been reviewed and found to be acceptable. Production will not commence until receipt of signed, approved shop drawings.

This drawing contains information proprietary to CONCRETE SYSTEMS, INC. This drawing is disclosed with the understanding that it will be retained in confidence and its use limited solely to the purpose for which it is disclosed. It is understood that no reproduction of this drawing is authorized without permission from CONCRETE SYSTEMS, INC. and that it will be returned to CONCRETE SYSTEMS, INC. upon request.

| Rev. | Date       | DESCRIPTION            | By  |
|------|------------|------------------------|-----|
| 10   |            |                        |     |
| 9    |            |                        |     |
| 8    |            |                        |     |
| 7    |            |                        |     |
| 6    |            |                        |     |
| 5    |            |                        |     |
| 4    |            |                        |     |
| 3    |            |                        |     |
| 2    |            |                        |     |
| 1    | 04/22/2022 | ADD DBS's & REVISE BOM | YAA |

This drawing is based upon information provided from the following documents and/or sources:  
 Engineer: MEDOT  
 Project No: N/A  
 Drawings: PLANS OF BERWICK ROUTE 9 SHEETS 1 & 2  
 Specifications: SPECIAL PROVISION SECTION 534 PRECAST STRUCTURAL CONCRETE  
 Other Sources: N/A

**CSI**  
Concrete Systems Inc.  
9 Commercial St., Hudson, NH 03051  
Phone 603-889-4163  
Fax 603-889-2417

STATE AGENCY  
MEDOT

Drawn By: YAA Date: 03/17/2022  
 Reviewed By: CMV Date: 04/01/2022  
 Approved By: Date:

STATE PROJECT NO. 23529.00P

STATE OF MAINE  
LARGE CULVERT REHABILITATION  
ROUTE 9 BERWICK, ME

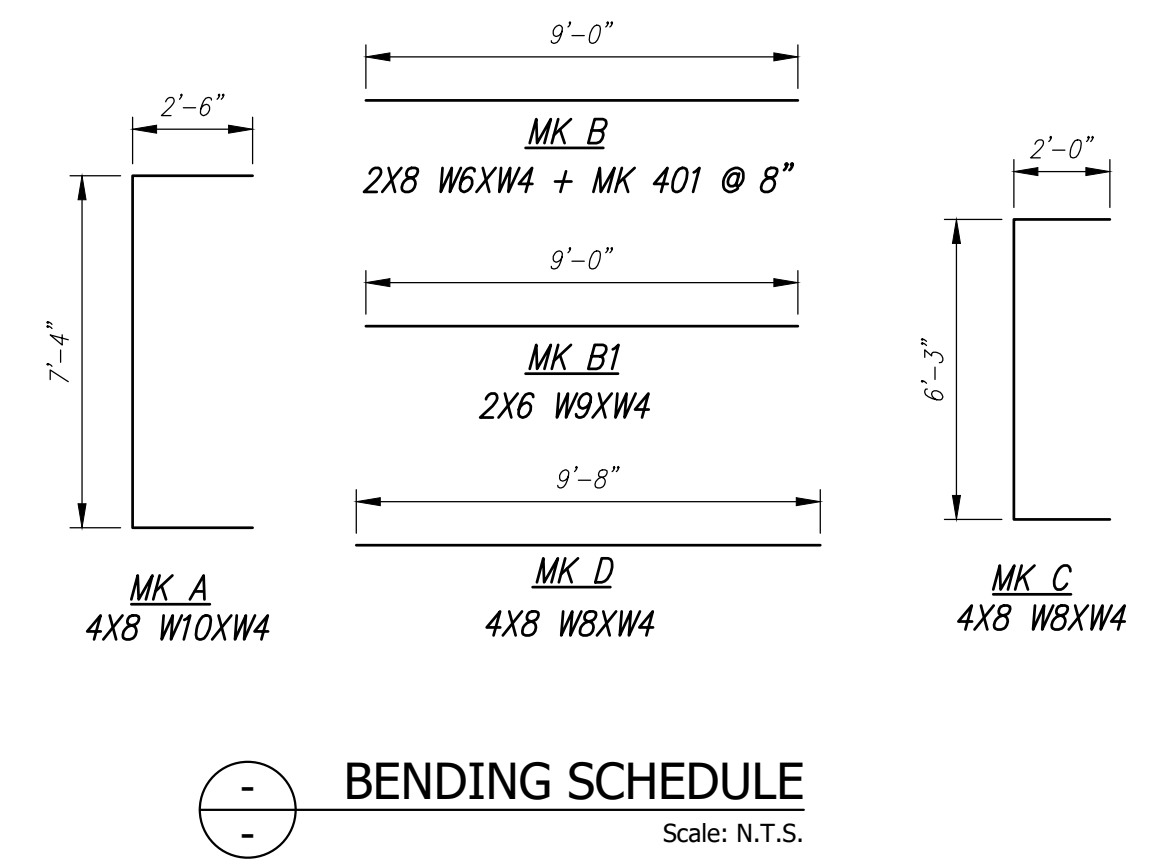
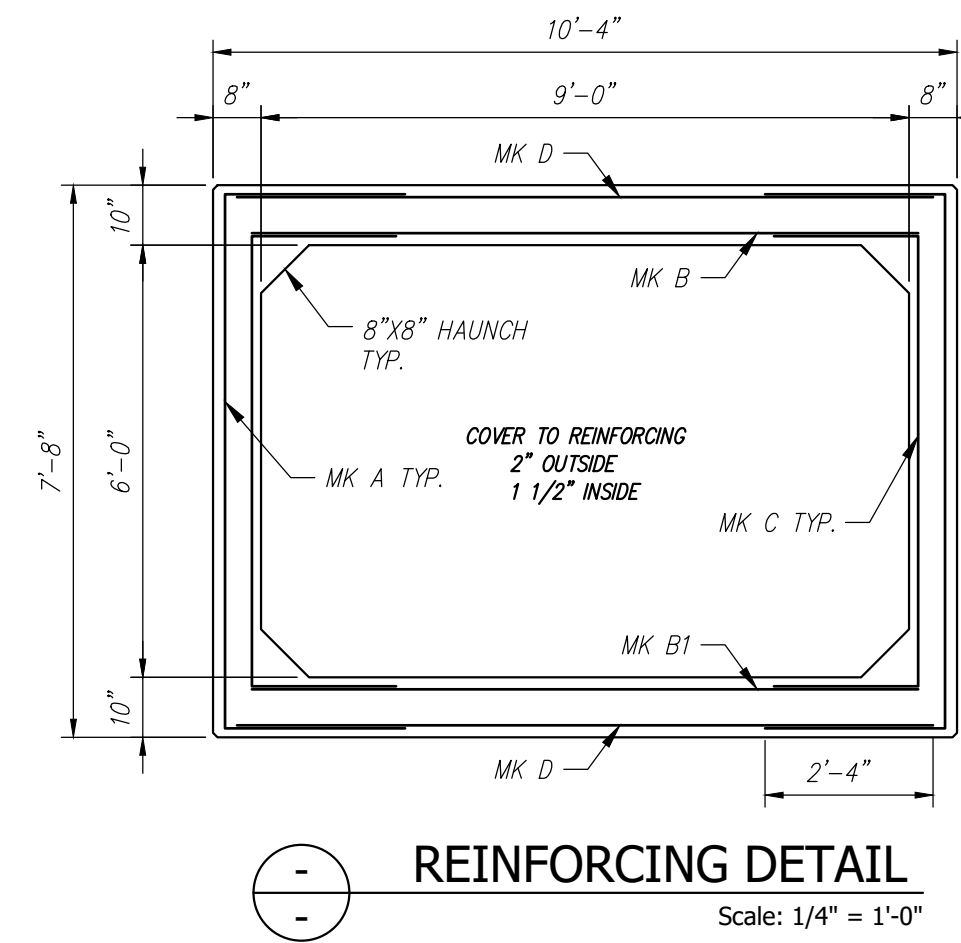
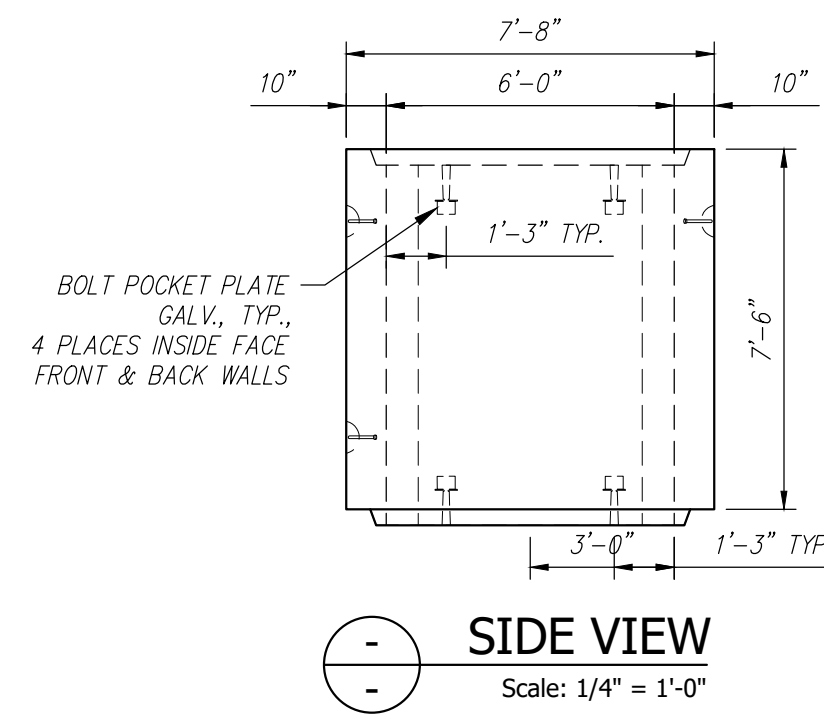
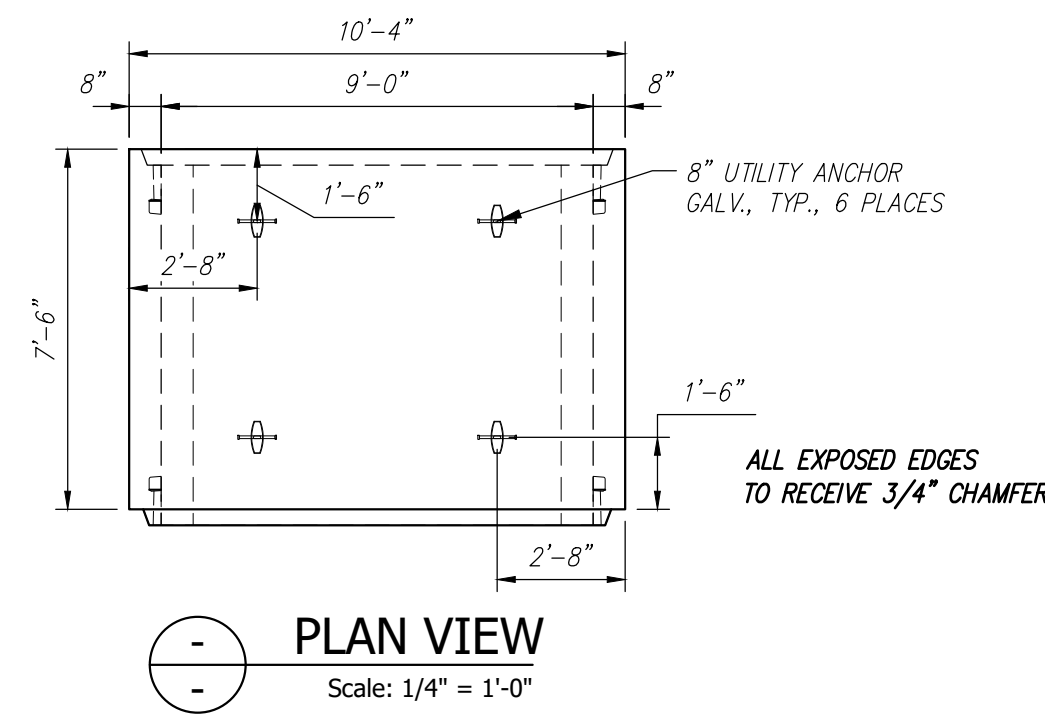
INDIVIDUAL PIECE SHOP DRAWING A4  
C24839-A4

Quantity: 1 Project No: WIN 23529.00P SHEET 7 OF 10

REV 1

| Culvert Rebar Schedule |     |        |
|------------------------|-----|--------|
| MK                     | QTY | LENGTH |
| 401 #4                 | 11  | 9'-0"  |

| A5 - BILL OF MATERIALS / EMBEDS |  |      |                       |
|---------------------------------|--|------|-----------------------|
| CSI ID#                         | DESCRIPTION                              | QTY  | UM COMMENTS           |
| EM-00115                        | 8" UTILITY ANCHOR - GALVANIZED           | 6    | EA ALP #LUA86G OR EQ. |
| EM-00125                        | BOLT POCKET PLATES (GALVANIZED)          | 8    | EA                    |
| RMA-00013                       | REBAR #4 BLACK - GR 60                   | 66   | LB                    |
| JS-00002                        | 1"X1" CLOSED NEOP GASKET                 | 32   | FT AROUND BELL        |
| RM-00098                        | WIRE MESH ALL SIZES                      | 756  | LB TOTAL WEIGHT       |
| MX-FA5000SCG13                  | MIX DESIGN - FLY ASH 5000 SELF COMPACTIN | 7.25 | CY                    |



Contractor is to verify that all information shown on drawings has been thoroughly checked, complies with the contract documents and is adequate to meet the field conditions. Some dimensions and details may differ slightly from contract drawings to accommodate the manufacturing or design process. Approval of this drawing indicates that any deviation from the contract documents has been reviewed and found to be acceptable. Production will not commence until receipt of signed, approved shop drawings.

This drawing contains information proprietary to CONCRETE SYSTEMS, INC. This drawing is disclosed with the understanding that it will be retained in confidence and its use limited solely to the purpose for which it is disclosed. It is understood that no reproduction of this drawing is authorized without permission from CONCRETE SYSTEMS, INC. and that it will be returned to CONCRETE SYSTEMS, INC. upon request.

| 10        |      |             |    |
|-----------|------|-------------|----|
| 9         |      |             |    |
| 8         |      |             |    |
| 7         |      |             |    |
| 6         |      |             |    |
| 5         |      |             |    |
| 4         |      |             |    |
| 3         |      |             |    |
| 2         |      |             |    |
| 1         |      |             |    |
| Rev.      | Date | DESCRIPTION | By |
| REVISIONS |      |             |    |

This drawing is based upon information provided from the following documents and/or sources:

Engineer: MEDOT  
 Project No: N/A  
 Drawings: PLANS OF BERWICK ROUTE 9  
 SHEETS 1 & 2  
 Specifications: SPECIAL PROVISION SECTION 534  
 PRECAST STRUCTURAL CONCRETE  
 Other Sources: N/A

**CSI**  
 Concrete Systems Inc.  
 9 Commercial St., Hudson, NH 03051  
 Phone 603-889-4163  
 Fax 603-889-2417

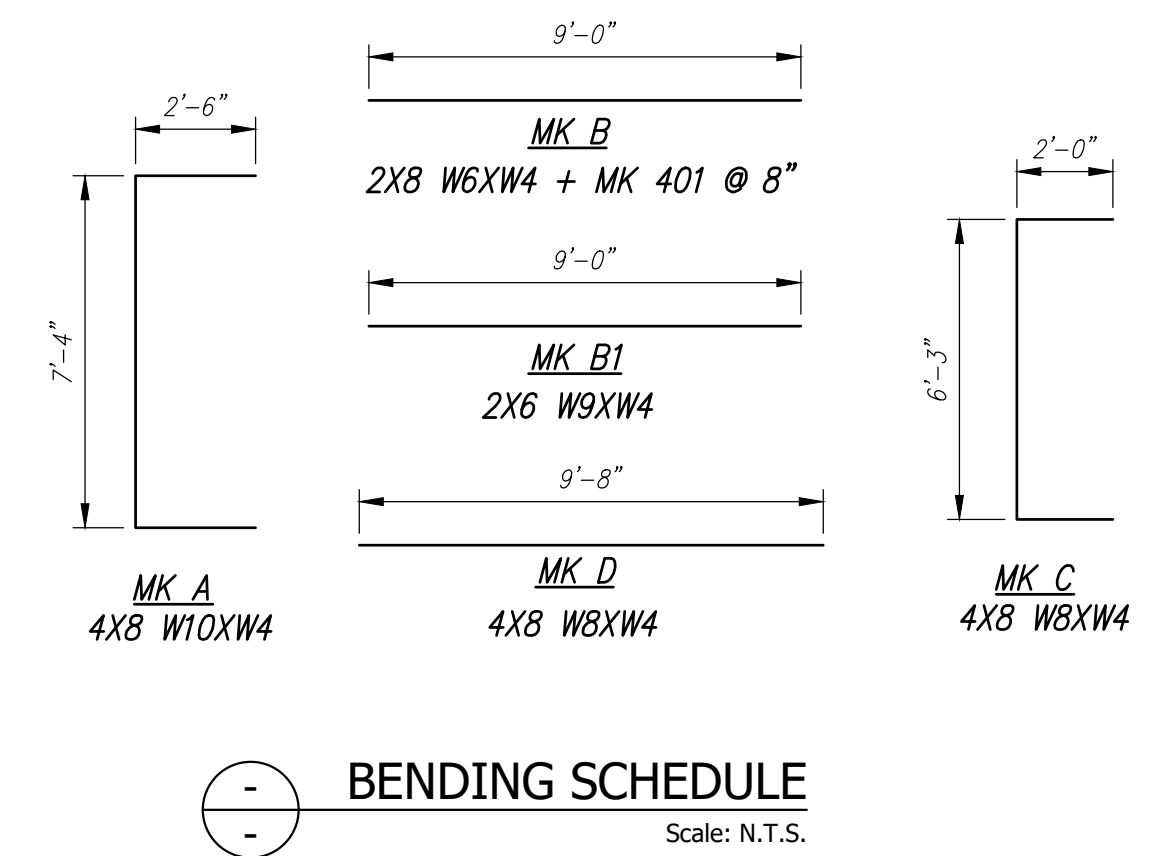
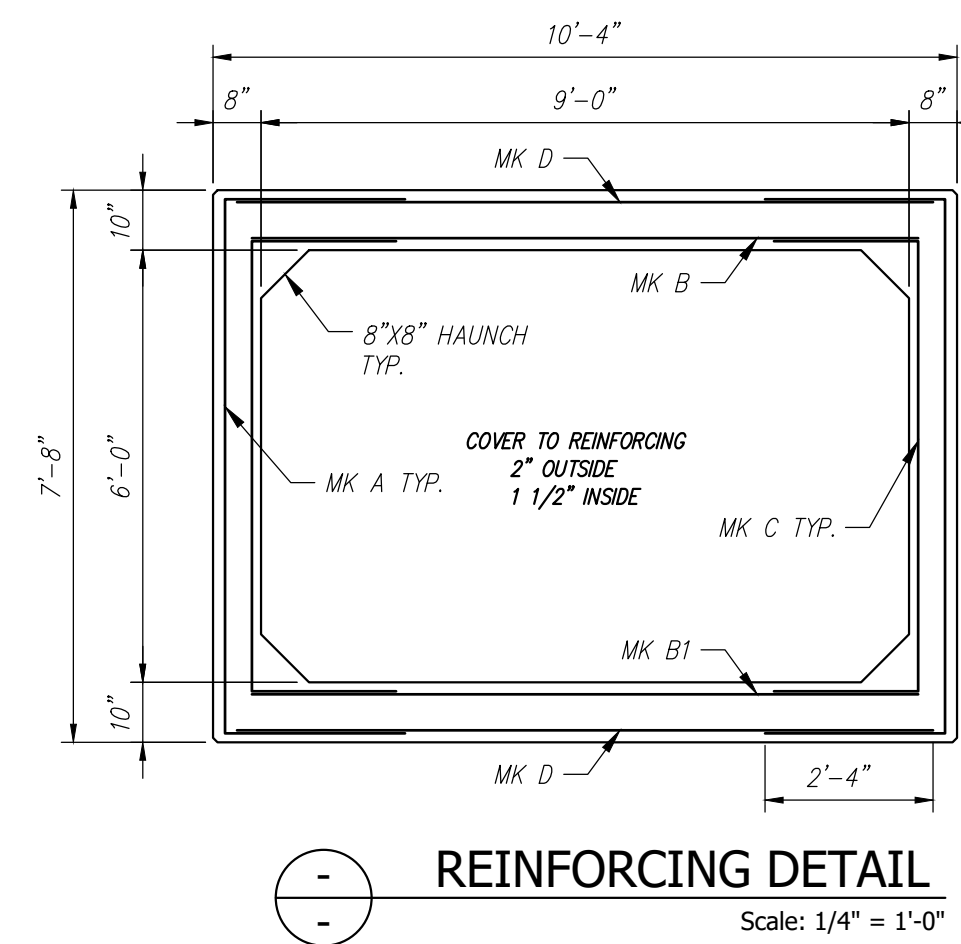
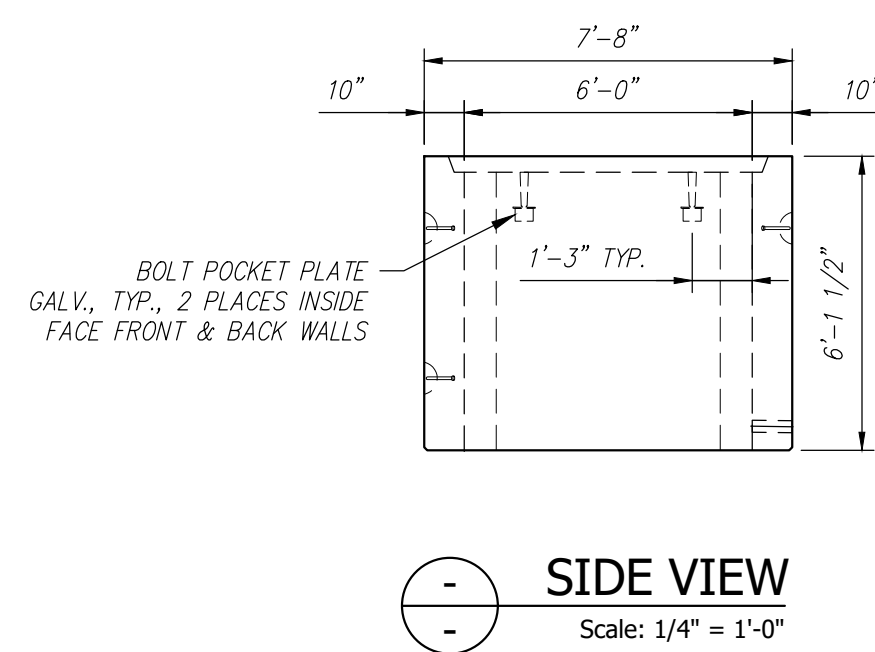
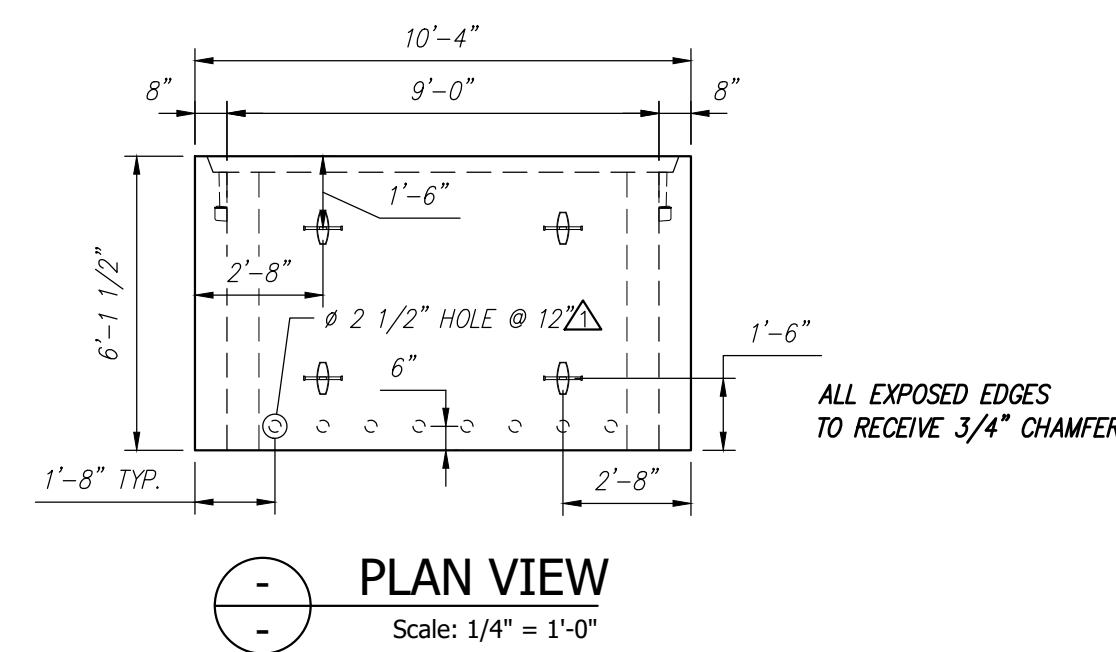
| STATE AGENCY |            |
|--------------|------------|
| MEDOT        |            |
| Drawn By     | YAA        |
| Date         | 03/17/2022 |
| Reviewed By  | CMV        |
| Date         | 04/01/2022 |
| Approved By  |            |

| STATE PROJECT NO. 23529.00P   |                                  |               |       |
|---|----------------------------------|---------------|-------|
| STATE OF MAINE<br>LARGE CULVERT REHABILITATION<br>ROUTE 9 BERWICK, ME |                                  |               |       |
| D   | Drawing No. C24839-A5            |               | REV 0 |
|   | INDIVIDUAL PIECE SHOP DRAWING A5 |               |       |
| Quantity: 2   | Project No: WIN 23529.00P        | SHEET 8 OF 10 |       |

| Culvert Rebar Schedule |     |        |
|------------------------|-----|--------|
| MK                     | QTY | LENGTH |
| 401 #4                 | 9   | 9'-0"  |

| A6 - BILL OF MATERIALS / EMBEDS |  |      |    |                    |
|---------------------------------|--|------|----|--------------------|
| CSI ID#                         | DESCRIPTION                              | QTY  | UM | COMMENTS           |
| DTJ                             | 2.5" PVC                                 | 6.67 | FT |                    |
| EM-00115                        | 8" UTILITY ANCHOR - GALVANIZED           | 6    | EA | ALP #LUA86G OR EQ. |
| EM-00125                        | BOLT POCKET PLATES (GALVANIZED)          | 4    | EA |                    |
| RM-00013                        | REBAR #4 BLACK- GR 60                    | 54   | LB |                    |
| JS-00002                        | 1"X1" CLOSED NEOP GASKET                 | 32   | FT | AROUND BELL        |
| RM-00098                        | WIRE MESH ALL SIZES                      | 766  | LB | TOTAL WEIGHT       |
| MX-FA5000SCC13                  | MIX DESIGN - FLY ASH 5000 SELF COMPACTIN | 5.79 | CY |                    |

SHIP LOOSE  
(8) #8 X 26" LG



Contractor is to verify that all information shown on drawings has been thoroughly checked, complies with the contract documents and is adequate to meet the field conditions. Some dimensions and details may differ slightly from contract drawings to accommodate the manufacturing or design process. Approval of this drawing indicates that any deviation from the contract documents has been reviewed and found to be acceptable. Production will not commence until receipt of signed, approved shop drawings.

This drawing contains information proprietary to CONCRETE SYSTEMS, INC. This drawing is disclosed with the understanding that it will be retained in confidence and its use limited solely to the purpose for which it is disclosed. It is understood that no reproduction of this drawing is authorized without permission from CONCRETE SYSTEMS, INC. and that it will be returned to CONCRETE SYSTEMS, INC. upon request.

| Rev. | Date       | DESCRIPTION       | By  |
|------|------------|-------------------|-----|
| 10   |            |                   |     |
| 9    |            |                   |     |
| 8    |            |                   |     |
| 7    |            |                   |     |
| 6    |            |                   |     |
| 5    |            |                   |     |
| 4    |            |                   |     |
| 3    |            |                   |     |
| 2    |            |                   |     |
| 1    | 04/22/2022 | SEE REV TRIANGLES | YAA |

This drawing is based upon information provided from the following documents and/or sources:

Engineer: MEDOT  
Project No: N/A  
Drawings: PLANS OF BERWICK ROUTE 9 SHEETS 1 & 2  
Specifications: SPECIAL PROVISION SECTION 534 PRECAST STRUCTURAL CONCRETE  
Other Sources: N/A

**Concrete Systems Inc.**  
9 Commercial St., Hudson, NH, 03051  
Phone 603-889-4163  
Fax 603-889-2417

STATE AGENCY  
MEDOT

Drawn By: YAA Date: 03/17/2022  
Reviewed By: CMV Date: 04/02/2022  
Approved By: \_\_\_\_\_ Date: \_\_\_\_\_

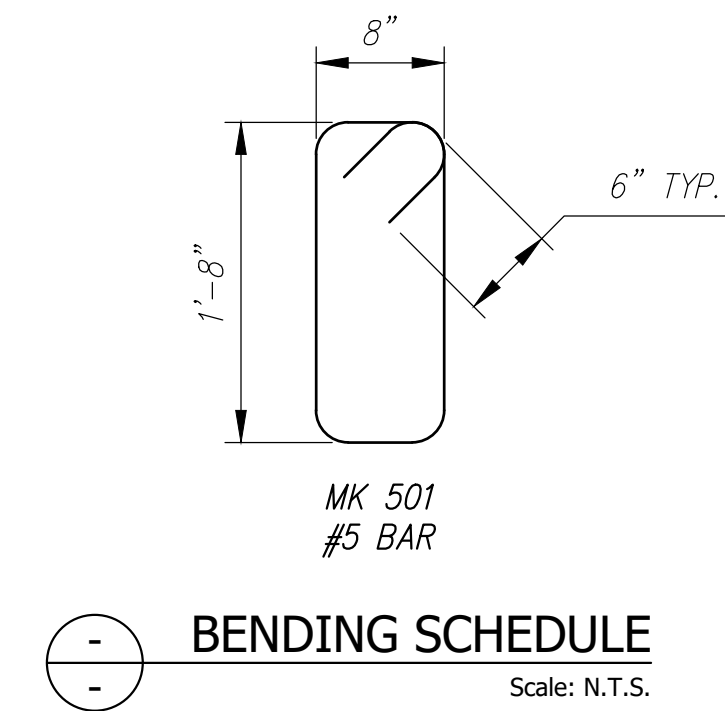
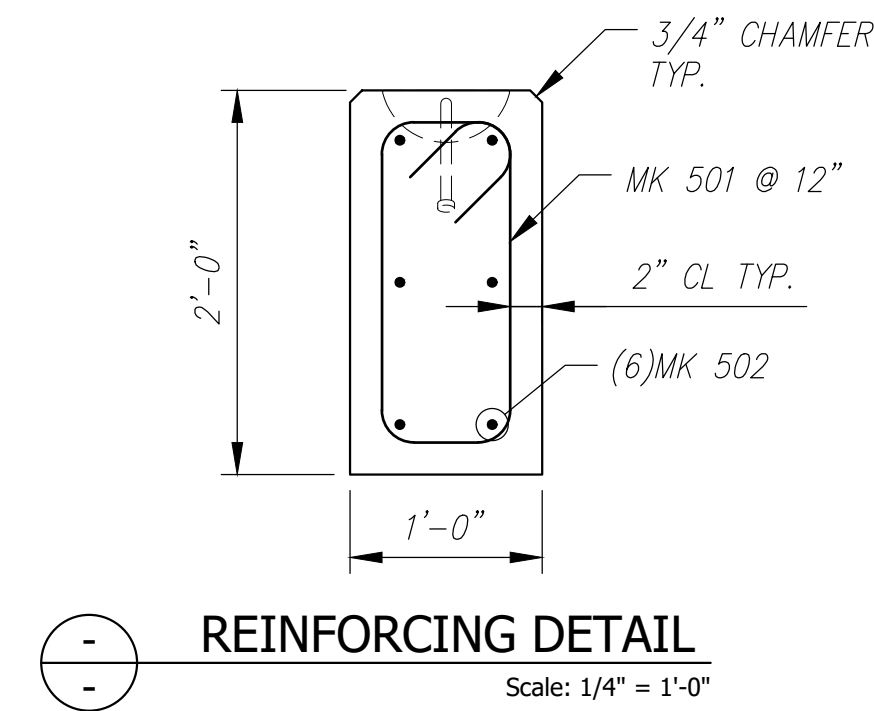
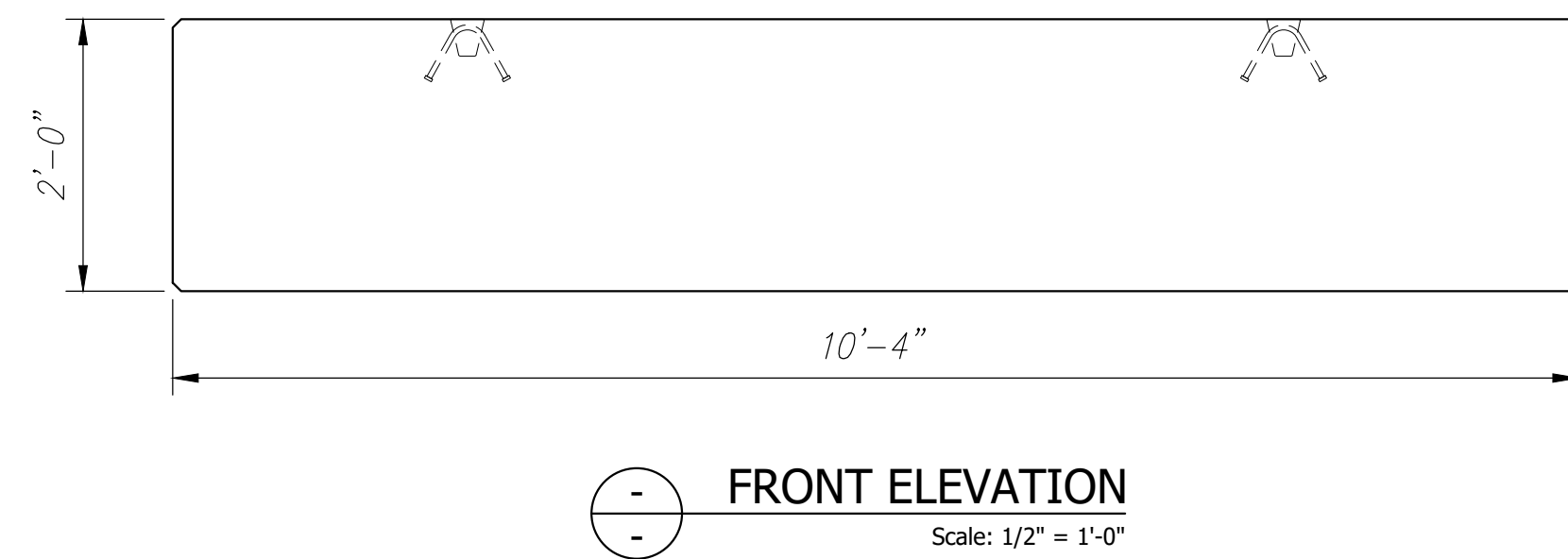
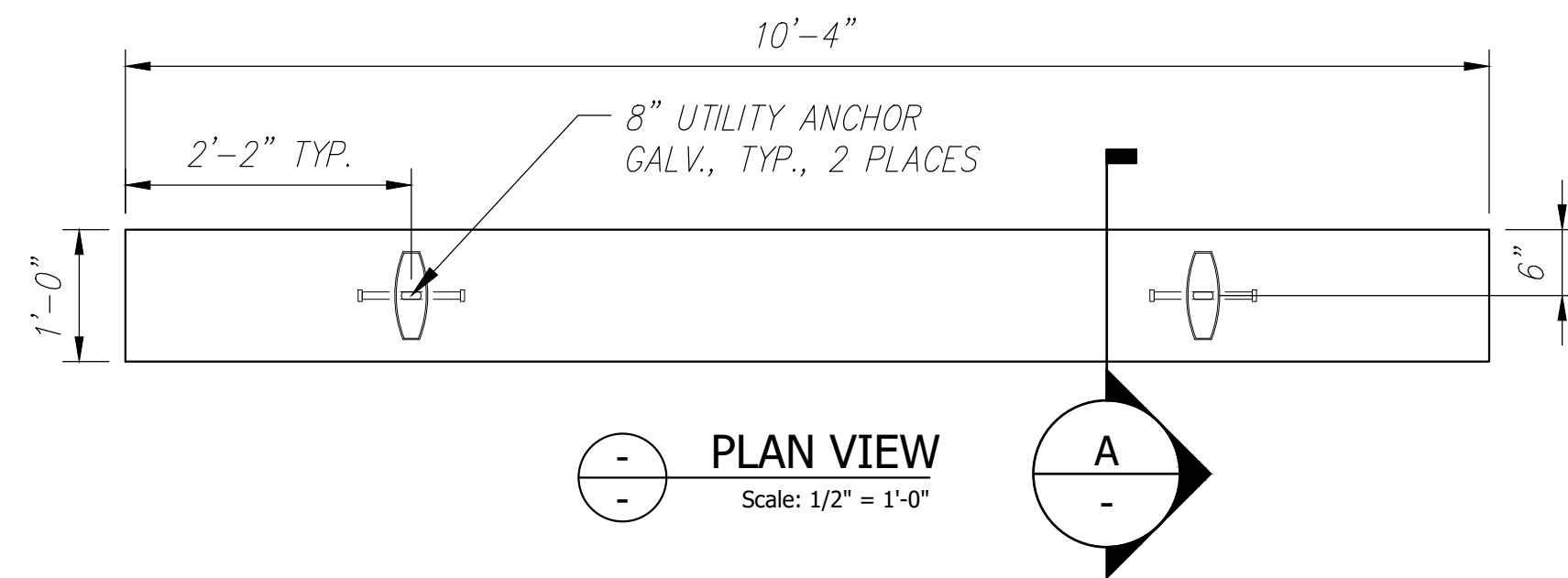
STATE PROJECT NO. 23529.00P

STATE OF MAINE  
LARGE CULVERT REHABILITATION  
ROUTE 9 BERWICK, ME

INDIVIDUAL PIECE SHOP DRAWING A6  
C24839-A6

Quantity: 1 Project No: WIN 23529.00P SHEET 9 OF 10

REV 1



| TW1 Rebar Schedule |     |          |
|--------------------|-----|----------|
| MK                 | QTY | LENGTH   |
| 501 #5             | 11  | 5' - 8"  |
| 502 #5             | 6   | 10' - 0" |

| TW1 - BILL OF MATERIALS / EMBEDS |  |      |                       |
|----------------------------------|--|------|-----------------------|
| CSI ID#                          | DESCRIPTION                              | QTY  | UM COMMENTS           |
| EM-00115                         | 8" UTILITY ANCHOR - GALVANIZED           | 2    | EA ALP #LUA86G OR EQ. |
| RM-00015                         | REBAR #5 BLACK-GR 60 40'                 | 128  | LB                    |
| MX-FA5000SCCI3                   | MIX DESIGN - FLY ASH 5000 SELF COMPACTIN | 0.77 | CY                    |

Contractor is to verify that all information shown on drawings has been thoroughly checked, complies with the contract documents and is adequate to meet the field conditions. Some dimensions and details may differ slightly from contract drawings to accommodate the manufacturing or design process. Approval of this drawing indicates that any deviation from the contract documents has been reviewed and found to be acceptable. Production will not commence until receipt of signed, approved shop drawings.

This drawing contains information proprietary to CONCRETE SYSTEMS, INC. This drawing is disclosed with the understanding that it will be retained in confidence and its use limited solely to the purpose for which it is disclosed. It is understood that no reproduction of this drawing is authorized without permission from CONCRETE SYSTEMS, INC. and that it will be returned to CONCRETE SYSTEMS, INC. upon request.

| 10        |      |             |    |
|-----------|------|-------------|----|
| 9         |      |             |    |
| 8         |      |             |    |
| 7         |      |             |    |
| 6         |      |             |    |
| 5         |      |             |    |
| 4         |      |             |    |
| 3         |      |             |    |
| 2         |      |             |    |
| 1         |      |             |    |
| Rev.      | Date | DESCRIPTION | By |
| REVISIONS |      |             |    |

This drawing is based upon information provided from the following documents and/or sources:

Engineer: MEDOT  
 Project No: N/A  
 Drawings: PLANS OF BERWICK ROUTE 9 SHEETS 1 & 2  
 Specifications: SPECIAL PROVISION SECTION 534 PRECAST STRUCTURAL CONCRETE  
 Other Sources: N/A

**CSI**  
 Concrete Systems Inc.  
 9 Commercial St., Hudson, NH, 03051  
 Phone 603-889-4163  
 Fax 603-889-2417

STATE AGENCY  
 MEDOT

Drawn By: YAA Date: 03/17/2022  
 Reviewed By: CMV Date: 04/01/2022  
 Approved By: Date:

STATE PROJECT NO. 23529.00P

STATE OF MAINE  
 LARGE CULVERT REHABILITATION  
 ROUTE 9 BERWICK, ME

INDIVIDUAL PIECE SHOP DRAWING TW1  
 Drawing No. C24839-TW1

Quantity: 2 Project No: WIN 23529.00P SHEET 10 OF 10