



STATE OF MAINE  
DEPARTMENT OF TRANSPORTATION  
16 STATE HOUSE STATION  
AUGUSTA, MAINE 04333-0016

Janet T. Mills  
GOVERNOR

Bruce A. Van Note  
COMMISSIONER

May 26, 2020  
Subject: Sidewalk & Safety Improvements  
State WIN: 022222.00  
Location: **Winthrop**  
**Amendment No. 1**

Dear Sir/Ms.:

Please make the following changes to the Bid Documents:

In the Plan Set:

**REMOVE SHEET NUMBER 5 OF 40, PLANS, and REPLACE with the attached SHEET NUMBER 5A OF 40, PLANS.**

**REMOVE SHEET NUMBER 6 OF 40, PLANS, and REPLACE with the attached SHEET NUMBER 6A OF 40, PLANS.**

The following questions have been received:

**Question:** Please supply a detail for Item 609.214.

**Response:** See Standard Detail 609(10), March 2020 Edition.

**Question:** Would the Department please consider moving the bid date to 6/10/2020?

**Response:** No.

**Question:** Please clarify scope of work for driveway entrance across from Metcalf Rd?

**Response:** Full reconstruction with 3" HMA and 11" ASCG.

**Question:** How is the pavement removal being paid for?

**Response:** Item 203.20 Common Excavation.

**Question:** I see on the plans where it calls out a butt joint 1.5" by 1' wide on the plans but I do not see a butt joint item. How will this work be paid for? Are butt joints going to be required everywhere the new pavement meets the existing or is a saw cut joint acceptable?

**Response:** The note is from an earlier version of the design and is not applicable. Saw cut joints are intended. See attached plan sheets 5A and 6A of 40.

Consider these changes and information prior to submitting your bid on **June 3, 2020**.

Sincerely,

A handwritten signature in black ink, appearing to read "George M. A. Macdougall". The signature is written in a cursive, flowing style.

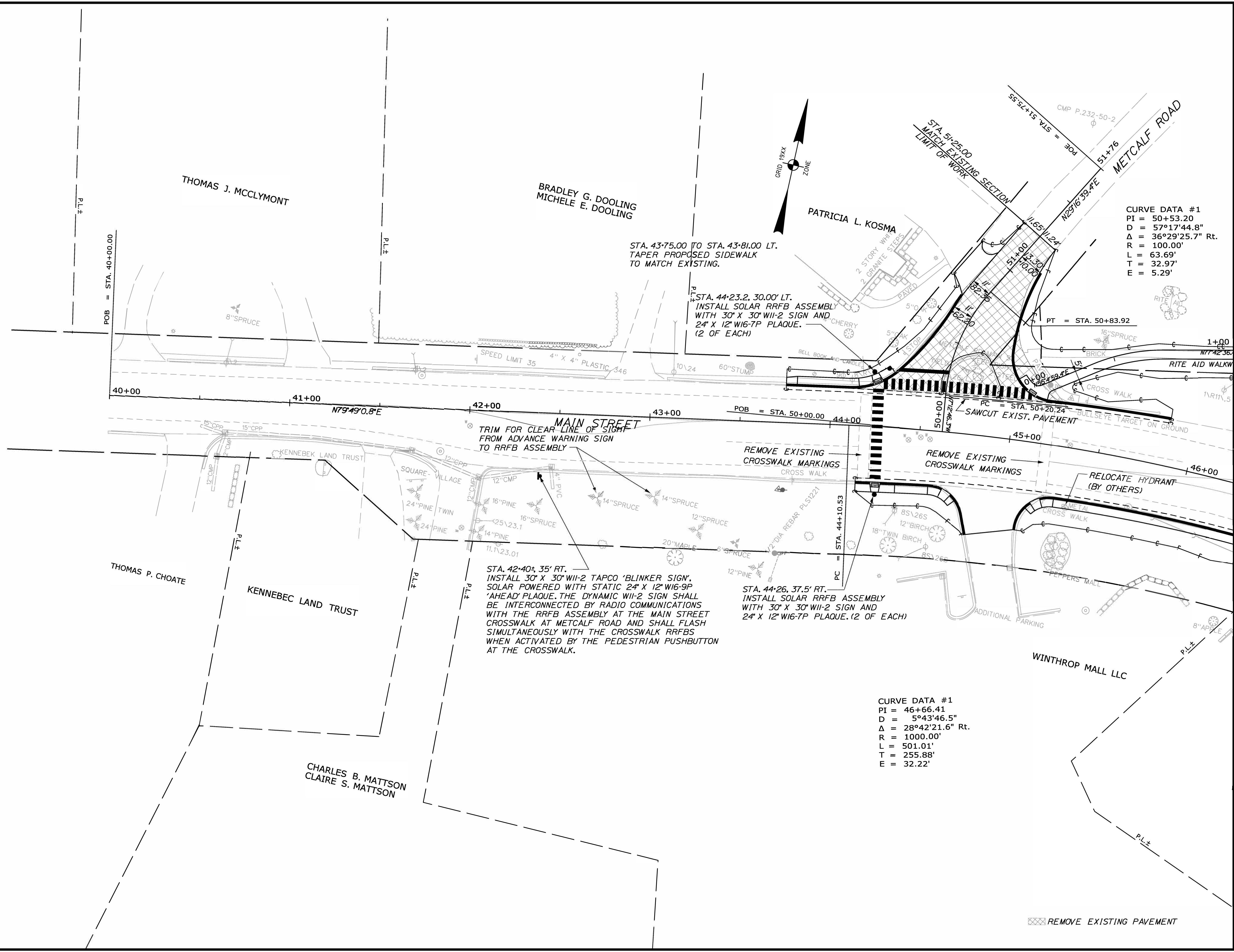
George M. A. Macdougall P.E.  
Contracts & Specifications Engineer

Date: 5/21/2020

Username: morin

Division: HIGHWAY

Filename: ... \005\_HDPlan2.dgn



STATE OF MAINE  
DEPARTMENT OF TRANSPORTATION

022222.00

WIN 22222.00

HIGHWAY PLANS

DATE	BY	REVISION
3-20	MSM	DESIGN-DETAILED
3-20	ALC	CHECKED-REVIEWED
		DESIGN-DETAILED
		DESIGN-DETAILED
		REVISIONS 1
		REVISIONS 2
		REVISIONS 3
		REVISIONS 4
		FIELD CHANGES

WINTHROP  
MAIN STREET  
PLANS

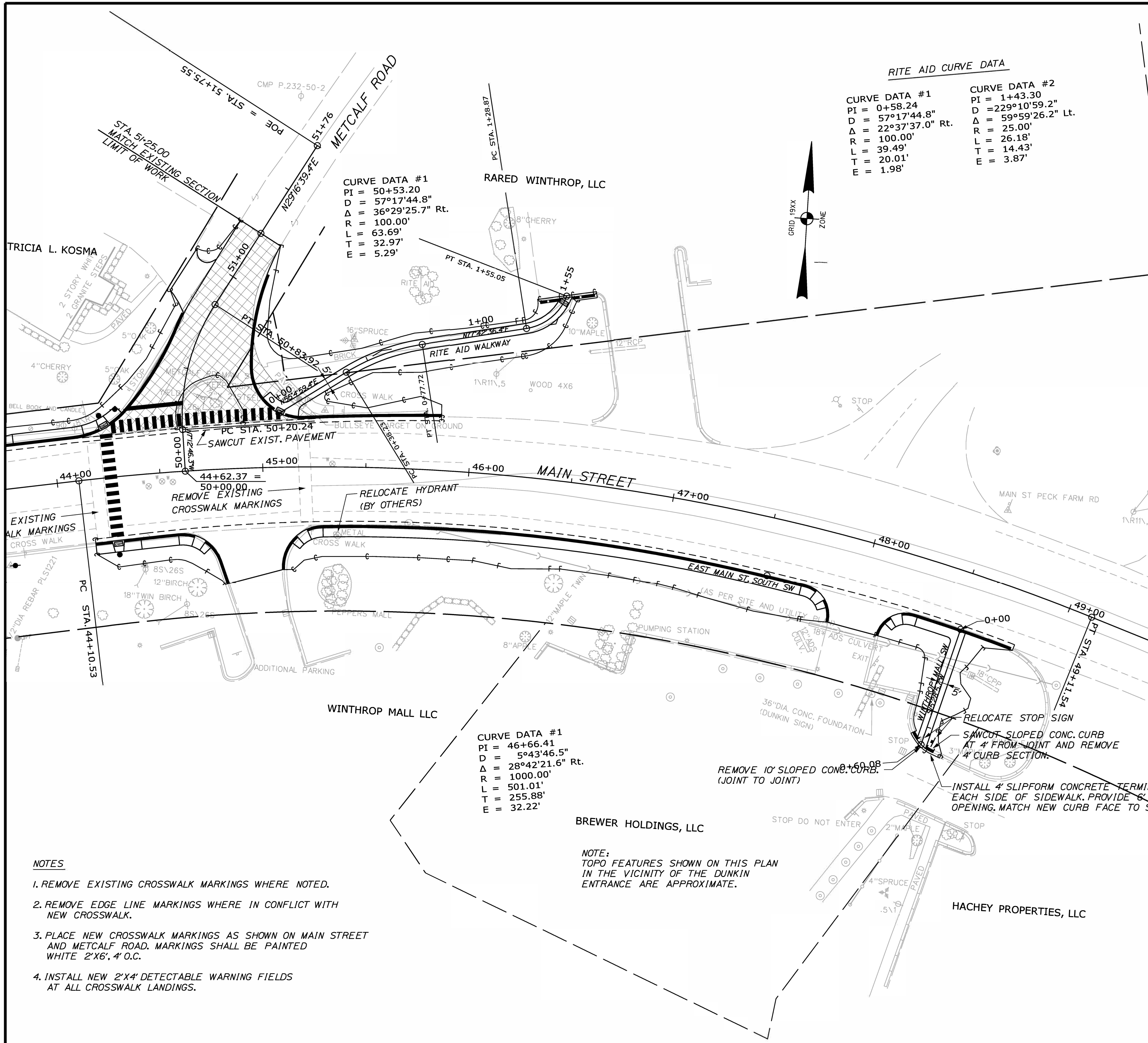
SHEET NUMBER  
**5A**  
OF 40

Date: 5/21/2020

Username: morin

Division: HIGHWAY

Filename: ... \006\_HDPlan3.dgn



**RITE AID CURVE DATA**

CURVE DATA #1		CURVE DATA #2	
PI = 0+58.24	D = 57°17'44.8"	PI = 1+43.30	D = 229°10'59.2"
Δ = 22°37'37.0" Rt.	R = 100.00'	Δ = 59°59'26.2"	R = 25.00'
L = 39.49'	T = 20.01'	L = 26.18'	T = 14.43'
E = 1.98'		E = 3.87'	

**CURVE DATA #1**

PI = 50+53.20	D = 57°17'44.8"
Δ = 36°29'25.7" Rt.	R = 100.00'
L = 63.69'	T = 32.97'
E = 5.29'	

**CURVE DATA #1**

PI = 46+66.41	D = 5°43'46.5"
Δ = 28°42'21.6" Rt.	R = 1000.00'
L = 501.01'	T = 255.88'
E = 32.22'	

**ITEM 609.31 CURB TYPE 3, MOLD 1**

LOCATION	LENGTH	REMARK
STA. 43+75.00, 20.67' LT TO STA. 44+10.34, 20.63' LT	35.34 LF	
STA. 44+10.34, 20.63' LT TO STA. 44+23.09, 22.91' LT	13.29 LF	40.00' R
STA. 44+28.43, 25.37' LT TO STA. 50+28.93, 27.03' LT	10.51 LF	40.00' R
STA. 50+28.93, 27.03' LT TO STA. 50+66.20, 11.00' LT	47.03 LF	150.00' R
STA. 50+66.20, 11.00' LT TO STA. 50+73.20, 11.00' LT	7.77 LF	111.00' R
STA. 50+60.48, 28.98' RT TO STA. 51+10.00, 13.30' RT	46.37 LF	120.00' R
STA. 50+60.48, 28.98' RT TO STA. 45+05.84, 27.71' LT	24.51 LF	25.00' R
STA. 45+11.03, 24.97' LT TO STA. 45+20.04, 23.48' LT	9.40 LF	25.00' R
STA. 45+20.04, 23.48' LT TO STA. 45+85.25, 26.11' LT	66.88 LF	1300.00' R
STA. 44+15.04, 30.99' RT TO STA. 44+23.58, 30.92' RT	8.00 LF	
STA. 44+29.77, 30.82' RT TO STA. 44+57.25, 30.11' RT	26.50 LF	
STA. 44+57.25, 30.11' RT TO STA. 44+65.17, 31.42' RT	8.00 LF	20.00' R
STA. 44+70.56, 34.34' RT TO STA. 44+77.67, 43.99' RT	12.00 LF	20.00' R
STA. 44+77.67, 43.99' RT TO STA. 44+81.24, 55.63' RT	12.12 LF	
STA. 45+08.63, 49.69' RT TO STA. 45+16.01, 33.33' RT	18.47 LF	20.00' R
STA. 45+21.25, 30.16' RT TO STA. 45+29.25, 28.48' RT	8.00 LF	20.00' R
STA. 45+29.25, 28.48' RT TO STA. 47+52.78, 28.08' RT	217.36 LF	850.00' R
STA. 47+52.78, 28.08' RT TO STA. 47+72.48, 28.17' RT	19.14 LF	
STA. 47+72.48, 28.17' RT TO STA. 47+78.72, 29.39' RT	6.23 LF	15.00' R
STA. 47+83.80, 32.76' RT TO STA. 47+88.24, 43.05' RT	11.42 LF	15.00' R
STA. 48+13.33, 42.78' RT TO STA. 48+17.63, 32.40' RT	11.45 LF	15.00' R
STA. 48+22.66, 28.96' RT TO STA. 48+28.97, 27.66' RT	6.32 LF	15.00' R
STA. 48+28.97, 27.66' RT TO STA. 48+80.02, 27.93' RT	49.64 LF	750.00' R

**ITEM 609.161 CONCRETE SLIPFORM CURB - VERTICAL**

LOCATION	LENGTH	REMARK
RITE AID WALKWAY		
STA. 1+43.36, 9.55' LT TO STA. 1+49.61, 5.67' LT	5.81 LF	
STA. 1+57.10, 6.26' RT TO STA. 1+58.98, 12.76' RT	7.00 LF	

**ITEM 609.214 CONCRETE SLIPFORM CURB 4' TERMINAL END**

LOCATION	QUANTITY	REMARK
RITE AID WALKWAY		
STA. 1+49.61, 5.67' LT TO STA. 1+52.55, 2.50' LT	1	
STA. 1+55.62, 2.65' RT TO STA. 1+57.10, 6.26' RT	1	
WINTHROP MALL SIDEWALK		
(STATIONING APPROXIMATE. MATCH EXISTING CURB JOINTS.)		
STA. 0+54.69, 5.75' RT TO STA. 0+57.34, 2.75' RT	1	
STA. 1+60.11, 2.75' LT TO STA. 0+60.80, 6.69' LT	1	

- NOTES**
- REMOVE EXISTING CROSSWALK MARKINGS WHERE NOTED.
  - REMOVE EDGE LINE MARKINGS WHERE IN CONFLICT WITH NEW CROSSWALK.
  - PLACE NEW CROSSWALK MARKINGS AS SHOWN ON MAIN STREET AND METCALF ROAD. MARKINGS SHALL BE PAINTED WHITE 2'X6', 4' O.C.
  - INSTALL NEW 2'X4' DETECTABLE WARNING FIELDS AT ALL CROSSWALK LANDINGS.

**NOTE:**  
 TOPO FEATURES SHOWN ON THIS PLAN IN THE VICINITY OF THE DUNKIN ENTRANCE ARE APPROXIMATE.

**STATE OF MAINE**  
**DEPARTMENT OF TRANSPORTATION**

**022222.00**

**WIN**  
**22222.00**

**HIGHWAY PLANS**

---

**WINTHROP**  
**MAIN STREET**

**PLANS**

---

SHEET NUMBER  
**6A**  
 OF 40

PROJ. MANAGER	DATE	BY	DATE
BRIAN KEIZER	3-20	MSM	3-20
DESIGN-DETAILED	MSM	CHECKED-REVIEWED	ALC
DESIGN-DETAILED	ALC	DESIGN-DETAILED	ALC
REVISIONS 1		REVISIONS 1	
REVISIONS 2		REVISIONS 2	
REVISIONS 3		REVISIONS 3	
REVISIONS 4		REVISIONS 4	
FIELD CHANGES		FIELD CHANGES	

PROJ. MANAGER	DATE	BY	DATE
BRIAN KEIZER	3-20	MSM	3-20
DESIGN-DETAILED	MSM	CHECKED-REVIEWED	ALC
DESIGN-DETAILED	ALC	DESIGN-DETAILED	ALC
REVISIONS 1		REVISIONS 1	
REVISIONS 2		REVISIONS 2	
REVISIONS 3		REVISIONS 3	
REVISIONS 4		REVISIONS 4	
FIELD CHANGES		FIELD CHANGES	