



STATE OF MAINE
DEPARTMENT OF TRANSPORTATION
16 STATE HOUSE STATION
AUGUSTA, MAINE 04333-0016

Paul R. LePage
GOVERNOR

David Bernhardt
COMMISSIONER

March 29, 2018
Subject: I-95 Ramp Improvements
State WINS: 020811.00 & 022694.00
Location: **Bangor**
Amendment No. 1

Dear Sir/Ms.:

Please make the following changes to the Bid Documents:

In the Bid Book:

REMOVE pages 60 – 61, SPECIAL PROVISION - SECTION 606 – GUARDRAIL, 2 pages, dated February 10, 2016, and **REPLACE** with the attached, revised SPECIAL PROVISION - SECTION 606 – GUARDRAIL, 2 pages, dated March 21, 2018.

In the Plan Set:

REMOVE Sheet Number 2 of 16 (WIN 020811.00), and **REPLACE** with the attached, revised Sheet Number 2 of 16 (WIN 020811.00).

Consider these changes and information prior to submitting your bid on **April 4, 2018**.

Sincerely,

for George M. A. Macdougall P.E.
Contracts & Specifications Engineer



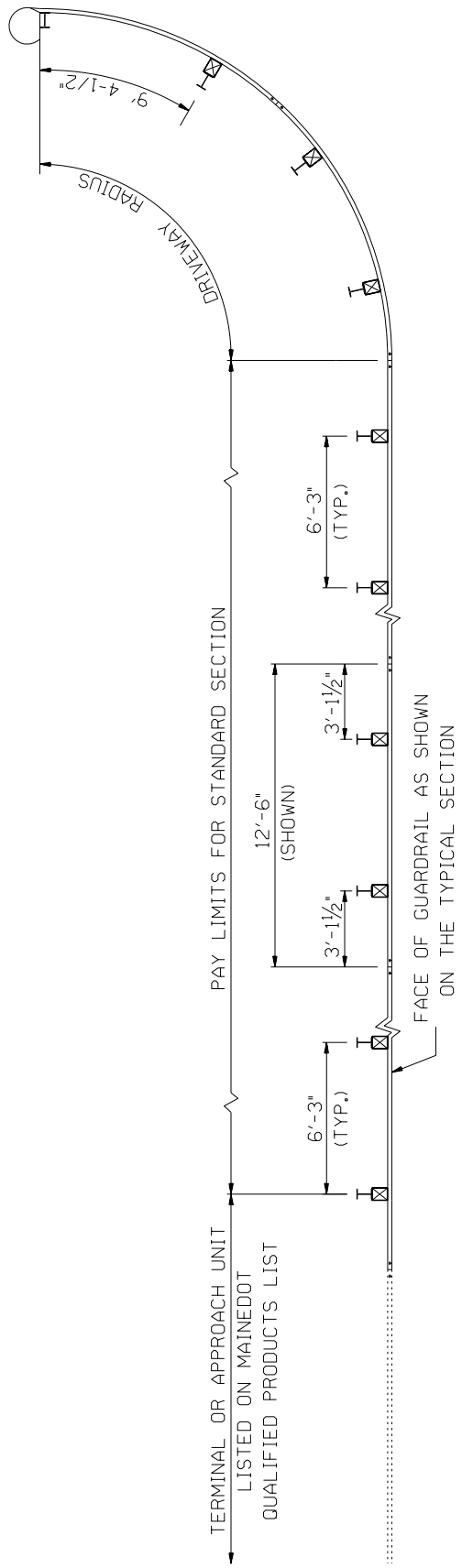
PRINTED ON RECYCLED PAPER

March 21, 2018

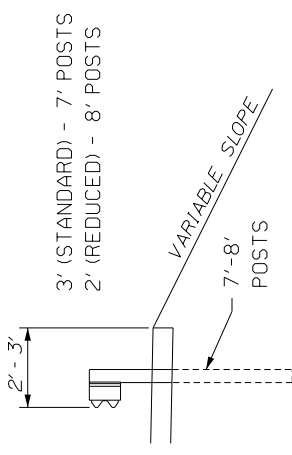
SPECIAL PROVISION
SECTION 606
GUARDRAIL

606.09 Basis of Payment: This section shall be amended with the addition of the following:

<u>Pay Item</u>	<u>Pay Unit</u>
606.1301 31" W-Beam Guardrail - Mid-Way Splice (Steel Post, 8" Offset Blocks, Single Faced)	Linear Foot
606.1302 31" W-Beam Guardrail - Mid-Way Splice (Steel Post, 8" Offset Blocks, Double Faced)	Linear Foot
606.1303 31" W-Beam Guardrail - Mid-Way Splice (Steel Post, 8" Offset Blocks, 15' Radius and Less)	Linear Foot
606.1304 31" W-Beam Guardrail - Mid-Way Splice (Steel Post, 8" Offset Blocks, Over 15' Radius)	Linear Foot
606.1305 31" W-Beam Guardrail - Mid-Way Splice Flared Terminal (31" Height)	Each
606.1306 31" W-Beam Guardrail - Mid-Way Splice Tangent Terminal (31" Height)	Each
606.1307 Bridge Transition (Asymmetrical) – Type 1	Each
606.1308 Buried-in-Slope Guardrail End, Mid-Way Splice	Each

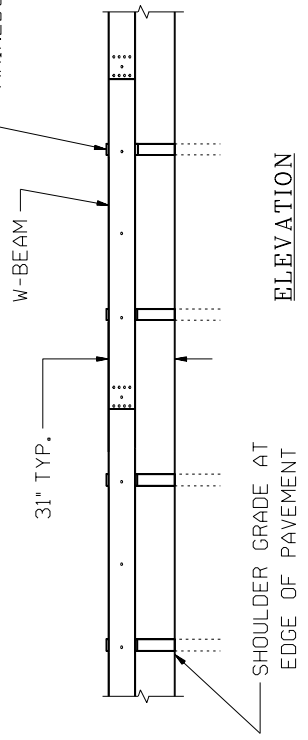


PLAN



CROSS SECTION

W 6x9.0 OR W 6x8.5 STEEL POST WITH 6" x 8" WOOD
 OFFSET BLOCK OR OTHER 8" BLOCK LISTED ON
 MAINEDOT QUALIFIED PRODUCTS LIST (TYP.)



ELEVATION

31" W-BEAM GUARDRAIL - MID-WAY SPLICE

