



Paul R. LePage  
GOVERNOR

STATE OF MAINE  
DEPARTMENT OF TRANSPORTATION  
16 STATE HOUSE STATION  
AUGUSTA, MAINE 04333-0016

December 9, 2011  
Subject: **Portland/Long Island**  
Federal Project No: STP-1745(510)S  
State PIN: 017455.10  
**Amendment No. 1**

David Bernhardt  
COMMISSIONER

Dear Sir/Ms:

Make the following changes to the Bid Documents:

In the Bid Book "SPECIAL PROVISION – TECHNICAL, SECTION 501, FOUNDATION PILES, (TIMBER PILES), subsection 501.105 Materials, page 48 (530-3), in the last paragraph of the page that begins "After driving, the heads of the piles ..."  
**DELETE** the following sentences "The tops of the piles shall be wrapped in fiberglass after cut-off. A minimum of three layers of fiberglass resin and two layers of fiberglass fabric, placed in alternating layers, shall be provided. The Contractor shall take care to follow proper procedures for fiberglass work regarding weather and temperature conditions at the time of placement." Make this change in pen and ink.

In the Plans, Sheet Number S1 (8 of 24), "DECK PLAN" **DELETE** in its entirety, the note that begins "4x10 Decking, lay with ..." and **REPLACE** with the following: "All deck planking should be placed with the heartwood down and fastened with 3 - 3/8" x 8" heavy duty flat head spikes at the ends and at each intersection with a stringer." Make this change with pen and ink.

The following questions have been received:

**Question:** Reference Special Provision – Technical, Section 501, Foundation Piles, (Timber Piles), Subsection 501.105 0 – Materials, last paragraph on page 48 (530-3). This paragraph talks about the tops wrapped in fiberglass after cut off. Is this for the fender piles or all piles?

**Response:** No fiberglass wrapping of any of the timber piles is required. Please see the above pen and ink change.

**Question:** Spikes for decking, page 54 (534-3), #6 says 3 spikes at each end and at intersection with stringers. Sheet S1 (8 of 24) Deck Plan note says 2 – 3/8" x 8" spikes each crossing. Which spec. do we use?



PRINTED ON RECYCLED PAPER

**Response:** All deck planking should be placed with the heartwood down and fastened with 3 - 3/8" x 8" heavy duty flat head spikes at the ends and at each intersection with a stringer. Please see the above pen and ink change.

**Question:** Reference Plan Sheet S5 (12 of 24), "FRAMING PLAN" top timber between (16) and (15). How does the end timber attach to the new Joists?

**Response:** Please see the attached sketch labeled "SKETCH - 1, ADDENDUM NO. 1".

**Question:** Sheet D2 (6 of 24), Great Diamond, shows 2 existing ladders. On site yesterday there was only one ladder on the Portland side. Sheet S5 (12 of 24) shows two ladders.

- \* Both New
- \* Leave existing (1)
- \* Build one new ladder leave existing

Please clarify ladder requirements Great Diamond. Is there just one ladder Little Diamond?

**Response:** Great Diamond Island - Existing Ladder on Portland side to remain.  
- Provide 1 new ladder on Long Island side.  
Little Diamond Island - one new ladder, existing ladder to remain.

**Question:** Reference Plan Sheet S4 (11 of 24) TYPICAL FENDER SYSTEM SECTION, Lower Wale/Chock at EL. 6.5, is there a bolt connecting the Pile to the Wale?

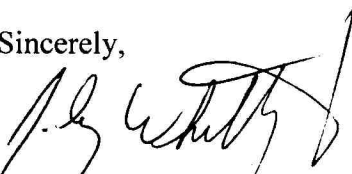
**Response:** Yes, the lower wale should be attached to the pile the same as the upper wale.

**Question:** May we use carriage bolts when it calls for button head bolts?

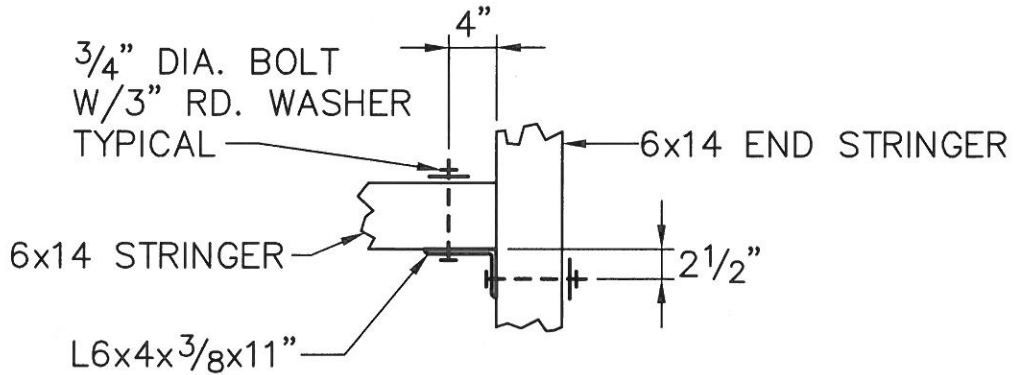
**Response:** Yes, Carriage Bolts may be used where button head bolts are called for.

Consider these changes and information prior to submitting your bid on December 21, 2011.

Sincerely,

  
for Scott Bickford  
Contracts & Specifications Engineer

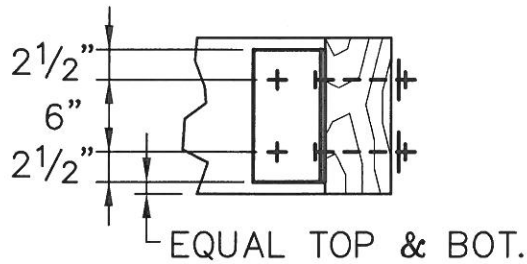
R:\TM-091A Casco Bay Con Phase\Bid Phase\RFIs\ADDENDUM 1.dwg 12/07/11 14:41 [21.54] By tripp\_r



PLAN

STRINGER END CONNECTION DETAIL

SCALE: 3/4" = 1'-0"



SECTION

SCALE: 3/4" = 1'-0"

NOTE: USE SAME CONNECTION AT ALL SIMILAR CONDITIONS

STATE OF MAINE  
DEPARTMENT OF TRANSPORTATION  
CASCO BAY TIMBER PIER REHABILITATION  
WIN NO. 17455.10

SKETCH - 1  
ADDENDUM NO. 1

REFERENCE SHEET NO. S5  
GREAT DIAMOND ISLAND  
PILE, FRAMING AND DECK PLANS  
DECEMBER 7, 2011