



Paul R. LePage  
GOVERNOR

STATE OF MAINE  
DEPARTMENT OF TRANSPORTATION  
16 STATE HOUSE STATION  
AUGUSTA, MAINE 04333-0016

August 3, 2012  
Subject: **Orono**  
Federal Project No: STP-1726(100)X  
State WIN: 017261.00  
**Amendment No. 1**

David Bernhardt  
COMMISSIONER

Dear Sir/Ms:

Make the following changes to the Bid Documents:

In the Plans, Plan Sheet 7 of 65 "GENERAL NOTES", Note #32 **DELETE** the sentence that begins "**THE CONTRACTOR IS RESPONSIBLE FOR TRANSFERING ...**"  
Make this change in pen and ink.

In the Plans, **REMOVE** the plan sheets listed below and **REPLACE** with the attached new plan sheets;

- Sheet Number 21 of 65
- Sheet Number 22 of 65
- Sheet Number 23 of 65
- Sheet Number 27 of 65
- Sheet Number 28 of 65
- Sheet Number 29 of 65
- Sheet Number 30 of 65

NOTE: Plan sheets will be FedExed/Mailed to those who purchased plans in the quantity and size purchased.

Consider this change and information prior to submitting your bid on August 15, 2012.

Sincerely,

  
George M. A. Macdougall P.E.  
for Contracts & Specifications Engineer



PRINTED ON RECYCLED PAPER

STATION	ALIGNMENT
10+00.00	MG01
100+00.00	MG02
200+00.00	MG03
300+00.00	MG04
400+00.00	MG05
500+00.00	MG06
600+00.00	MG07
700+00.00	MG08
800+00.00	MG09
900+00.00	MG10
1000+00.00	MG11
2000+00.00	MG12
3000+00.00	MG13
4000+00.00	MG14
5000+00.00	MG15
6000+00.00	MG16
7000+00.00	MG17

ALIGNMENT DATA FOR MG02	
STATION	X COORD Y COORD
100+00.00	1749945.27 507665.88
100+46.55	1749958.83 507710.41
1750040.94	507636.76
1750001.62	507728.71
100+100.00	
Δ 49°-55'-10" RT.	
60'-00'-00"	
87.13'	
46.55'	
10.30'	

ALIGNMENT DATA FOR MG03	
STATION	X COORD Y COORD
200+00.00	1749744.78 507425.28
200+69.83	1749783.81 507483.18
1750159.37	507145.80
1749837.22	507528.18
500.00'	
Δ 15°-54'-05" RT.	
11°-27'-33"	
138.76'	
69.83'	
4.85'	

ALIGNMENT DATA FOR MG04	
STATION	X COORD Y COORD
300+00.00	1749744.78 507425.28
300+46.56	1749770.80 507463.88
BEARING N 33°-59'-04" E	
46.56'	
300+100.00	
300+46.56	1749770.80 507463.88
300+96.69	1749798.83 507505.46
1750434.15	507016.71
1749831.82	507543.21
800.00'	
Δ 7°-10'-20" RT.	
7°-09'-43"	
100.14'	
50.14'	
1.57'	

ALIGNMENT DATA FOR MG05	
STATION	X COORD Y COORD
400+00.00	1749868.11 507615.51
400+71.65	1749907.62 507675.28
1749638.69	507767.14
401+40.18	1749912.93 507746.74
275.00'	
Δ 29°-12'-26" LT.	
20°-50'-05"	
140.18'	
71.65'	
9.18'	

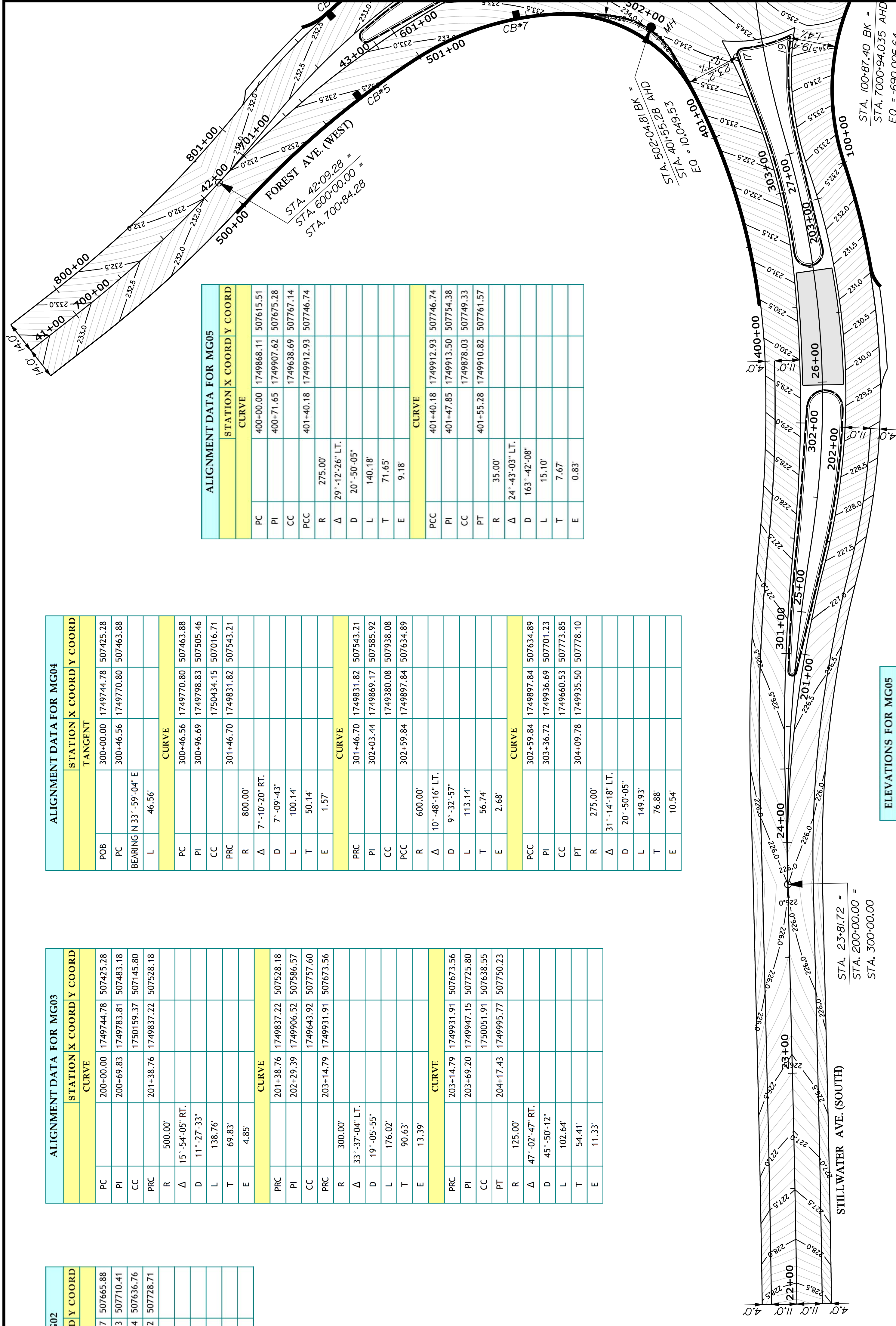
STATE OF MAINE  
DEPARTMENT OF TRANSPORTATION  
STP-1726(100)X  
WIN  
17261.00  
HIGHWAY PLANS

ELEVATIONS FOR MG03	
STATION	POINT ELEVATION
200+00.00	226.00
200+10.00	226.08
200+20.00	226.15
200+30.00	226.23
200+40.00	226.30
200+50.00	226.38
200+60.00	226.45
200+70.00	226.53
200+80.00	226.60
200+90.00	226.68
201+00.00	226.79
201+10.00	226.92
201+20.00	227.08
201+30.00	227.26
201+40.00	227.47
201+50.00	227.70
201+60.00	227.96
201+70.00	228.24
201+80.00	228.55

ELEVATIONS FOR MG04	
STATION	POINT ELEVATION
300+00.00	226.00
300+10.00	226.07
300+20.00	226.15
300+30.00	226.22
300+40.00	226.30
300+50.00	226.37
300+60.00	226.45
300+70.00	226.52
300+80.00	226.60
300+90.00	226.68
301+00.00	226.79
301+10.00	226.93
301+20.00	227.09
301+30.00	227.27
301+40.00	227.48
301+50.00	227.72
301+60.00	227.99
301+70.00	228.28
301+80.00	228.58

ELEVATIONS FOR MG05	
STATION	POINT ELEVATION
400+00.00	229.70
400+10.00	230.00
400+20.00	230.30
400+30.00	230.60
400+40.00	230.90
400+50.00	231.20
400+60.00	231.50
400+70.00	231.80
400+80.00	232.10
400+90.00	232.40
401+00.00	232.70
401+10.00	233.00
401+20.00	233.30
401+30.00	233.58
401+40.00	233.80
401+50.00	233.96
401+55.28	234.04

ELEVATIONS FOR MG02	
STATION	POINT ELEVATION
100+00.00	13
100+10.00	232.52
100+20.00	232.91
100+30.00	233.29
100+40.00	233.68
100+50.00	234.06
100+60.00	234.45
100+70.00	234.83
100+80.00	235.22
100+87.13	235.61
	235.88

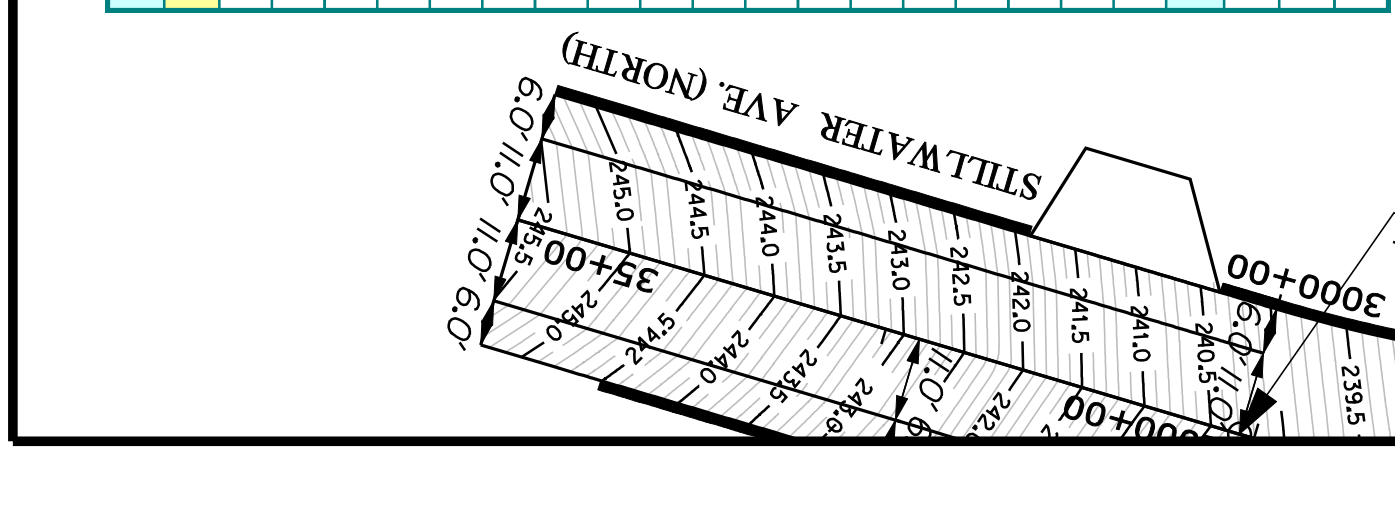


ORONO  
STILLWATER\FOREST AVE.  
GRADING PLANS

DATE	BY	DATE
JULY 2012	BT TRAN	JULY 2012
SIGNATURE		
P. MACDONALD		
P.B. NUMBER	BT TRAN	AUG 2012

SHEET NUMBER  
21  
OF 65





STATION	ALIGNMENT
10+00.00	MG01
100+00.00	MG02
200+00.00	MG03
300+00.00	MG04
400+00.00	MG05
500+00.00	MG06
600+00.00	MG07
700+00.00	MG08
800+00.00	MG09
900+00.00	MG10
1000+00.00	MG11
2000+00.00	MG12
3000+00.00	MG13
4000+00.00	MG14
5000+00.00	MG15
6000+00.00	MG16
7000+00.00	MG17

SEE GEOMETRY SHEET FOR	
CONTROL POINTS	
STATIONS 20+00.00, 30+00.00	
40+00.00 AND 50+00.00	

ALIGNMENT DATA FOR MG07		
STATION	X COORD	Y COORD
CURVE		
PC	600+00.00	1749720.32
PI	600+63.37	1749782.26
CC	1749804.73	507424.64
PCC	601+25.70	1749845.31
R	400.00'	
Δ	18°-00'-19"	RT.
D	14°-19'-26"	
L	125.70'	
T	63.37'	
E	4.99'	
CURVE		
PCC	601+25.70	1749845.31
PI	601+88.55	1749907.83
CC	1749832.63	507698.22
PT	602+42.17	1749940.01
R	125.00'	
Δ	52°-23'-07"	RT.
D	45°-50'-12"	
L	116.47'	
T	62.85'	
E	14.91'	

ALIGNMENT DATA FOR MG13		
STATION	X COORD	Y COORD
CURVE		
PC	3000+00.00	1750078.69
PI	3000+42.69	1750054.84
CC	1750244.58	50780.45
PCC	3000+84.12	1750047.53
R	200.00'	
Δ	24°-05'-56"	LT.
D	28°-38'-52"	
L	84.12'	
T	42.69'	
E	4.51'	
CURVE		
PCC	3000+84.12	1750047.53
PI	3000+88.00	1750046.86
CC	1750062.31	507812.12
PT	3000+91.72	1750048.14
R	15.00'	
Δ	29°-00'-28"	RT.
D	381°-58'-19"	
L	7.59'	
T	3.88'	
E	0.49'	

ALIGNMENT DATA FOR MG14		
STATION	X COORD	Y COORD
CURVE		
PC	4000+00.00	1750110.91
PI	4000+33.65	1750077.37
CC	1750119.01	507875.44
PCC	4000+64.92	1750052.30
R	100.00'	
Δ	37°-11'-50"	RT.
D	57°-17'-45"	
L	64.92'	
T	33.65'	
E	5.51'	
CURVE		
PCC	4000+64.92	1750052.30
PI	4000+68.80	1750049.41
CC	1750062.31	507812.12
PT	4000+72.52	1750048.14
R	15.00'	
Δ	29°-00'-28"	RT.
D	381°-58'-19"	
L	7.59'	
T	3.88'	
E	0.49'	

ALIGNMENT DATA FOR MG15		
STATION	X COORD	Y COORD
TANGENT		
POB	5000+00.00	1750253.55
PC	5001+61.86	1750092.22
BEARING	N 85°-21'-15"	W
L	161.86'	
CURVE		
PC	5001+61.86	1750092.22
PI	5002+10.42	1750043.82
CC	1750100.32	507862.92
PT	5002+52.28	1750016.98
R	100.00'	
Δ	51°-48'-25"	RT.
D	57°-17'-45"	
L	90.42'	
T	48.56'	
E	11.17'	

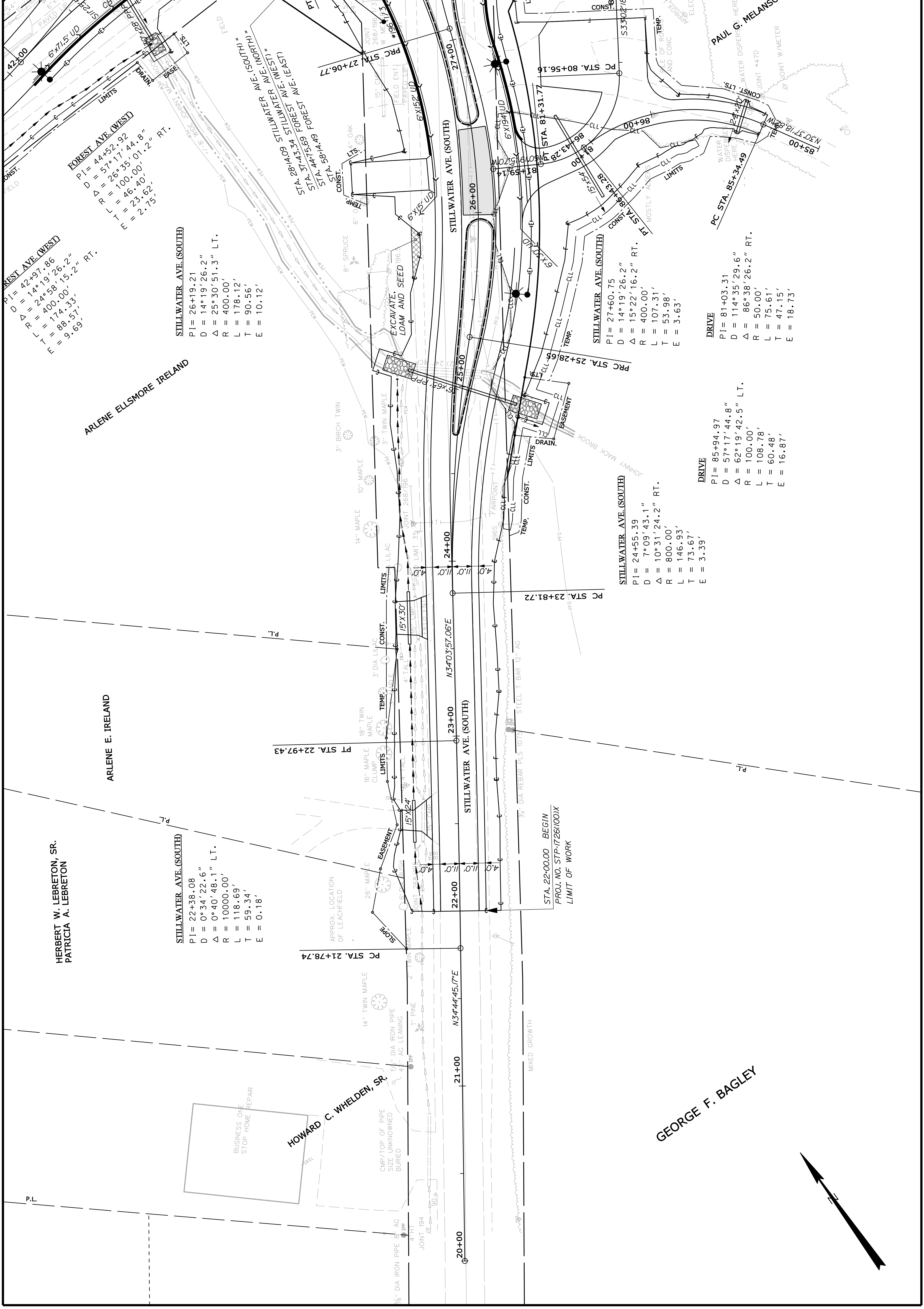
ALIGNMENT DATA FOR MG16		
STATION	X COORD	Y COORD
TANGENT		
POB	6000+00.00	1750253.55
PC	6001+82.56	1750071.29
BEARING	N 86°-42'-59"	W
L	182.56'	
CURVE		
PC	6001+82.56	1750071.29
PI	6002+24.25	1750029.67
CC	1750059.83	507560.92
PT	6002+64.75	1749990.56
R	200.00'	
Δ	23°-32'-48"	LT.
D	28°-38'-52"	
L	82.19'	
T	41.68'	
E	4.30'	
ALIGNMENT DATA FOR MG17		
CURVE		
PC	7000+00.00	1750093.58
PI	7000+47.76	1750045.89
CC	1750082.12	507545.62
PT	7000+93.77	1750002.12
R	200.00'	
Δ	26°-51'-51"	LT.
D	28°-38'-52"	
L	93.77'	
T	47.76'	
E	5.62'	

ALIGNMENT DATA FOR MG08		
STATION	X COORD	Y COORD
CURVE		
PC	700+00.00	1749636.82
PI	700+59.42	1749696.19
CC	1749614.80	508304.37
PRC	701+18.29	1749753.29
R	500.00'	
Δ	13°-33'-18"	LT.
D	11°-27'-33"	
L	118.29'	
T	59.42'	
E	3.52'	
CURVE		
PRC	701+18.29	1749753.29
PI	701+83.44	1749815.88
CC	1749836.38	507535.67
PT	702+46.59	1749880.33
R	300.00'	
Δ	24°-30'-13"	RT.
D	19°-05'-55"	
L	128.30'	
T	65.15'	
E	6.99'	
TANGENT		
PT	702+46.59	1749880.33
PC	702+77.33	1749910.73
BEARING	S 81°-34'-35"	E
L	30.74'	
CURVE		
PC	702+77.33	1749910.73
PI	703+13.70	1749946.72
CC	1749978.03	508222.60
PT	703+49.88	1749983.07
R	400.00'	
Δ	10°-23'-33"	LT.
D	14°-19'-26"	
L	72.55'	
T	36.38'	
E	1.65'	

ELEVATIONS FOR MG08			
STATION	POINT ELEVATION	STATION	POINT ELEVATION
700+90.00	231.98	702+10.00	233.49
701+00.00	232.11	702+20.00	233.65
701+10.00	232.23	702+30.00	233.83
701+18.29	232.34	702+40.00	234.03
701+20.00	232.36	702+46.59	234.18
701+30.00	232.48	702+50.00	234.26
701+40.00	232.61	702+60.00	234.50
701+50.00	232.73	702+70.00	234.74
701+60.00	232.86	702+77.33	234.92
701+70.00	232.98	702+80.00	234.98
701+80.00	233.11	702+90.00	235.22
701+90.00	233.24	703+00.00	235.47
702+00.00	233.36		
ELEVATIONS FOR MG13			
ELEVATIONS FOR MG14			
ELEVATIONS FOR MG15			
ELEVATIONS FOR MG16			
ELEVATIONS FOR MG17			

ELEVATIONS FOR MG16			
STATION	POINT ELEVATION	STATION	POINT ELEVATION
6000+00.00	235.02	6001+20.00	235.96
6001+00.00	234.97	6001+30.00	236.08
6000+20.00	234.97	6001+40.00	236.21
6000+30.00	235.00	6001+50.00	236.35
6000+40.00	235.07	6001+60.00	236.50
6000+50.00	235.17	6001+70.00	236.66
6000+60.00	235.28	6001+80.00	236.83
6000+70.00	235.40	6001+82.56	236.88
6000+80.00	235.51	6001+90.00	237.00
6000+90.00	235.62	6002+00.00	237.11
6001+00.00	235.74	6002+10.00	237.13
6001+10.00	235.85		
ELEVATIONS FOR MG15			
ELEVATIONS FOR MG16			
ELEVATIONS FOR MG17			

DATE	BY	DATE	BY
AUG 2012	J. FRENCH	JULY 2012	BT TRAN
P.E. NUMBER	SIGNATURE	P.E. NUMBER	SIGNATURE



**FOREST AVE. (WEST)**  
 PI = 42+97.86  
 D = 14°19'26.2"  
 Δ = 24°58'26.2"  
 L = 174.00'  
 T = 88.51'  
 E = 9.69'

**STILLWATER AVE. (SOUTH)**  
 PI = 26+19.21  
 D = 14°19'26.2"  
 Δ = 25°30'51.3" LT.  
 R = 400.00'  
 L = 178.12'  
 T = 90.56'  
 E = 10.12'

**STILLWATER AVE. (SOUTH)**  
 PI = 22+38.08  
 D = 0°34'22.6"  
 Δ = 0°40'48.1" LT.  
 R = 10000.00'  
 L = 118.69'  
 T = 59.34'  
 E = 0.18'

**STILLWATER AVE. (SOUTH)**  
 PI = 24+55.39  
 D = 7°09'43.1"  
 Δ = 10°31'24.2" RT.  
 R = 800.00'  
 L = 146.93'  
 T = 73.67'  
 E = 3.39'

**STILLWATER AVE. (SOUTH)**  
 PI = 27+60.75  
 D = 14°19'26.2"  
 Δ = 15°22'16.2" RT.  
 R = 400.00'  
 L = 107.31'  
 T = 53.98'  
 E = 3.63'

**DRIVE**  
 PI = 85+94.97  
 D = 57°17'44.8"  
 Δ = 62°19'42.5" LT.  
 R = 100.00'  
 L = 108.78'  
 T = 60.48'  
 E = 16.87'

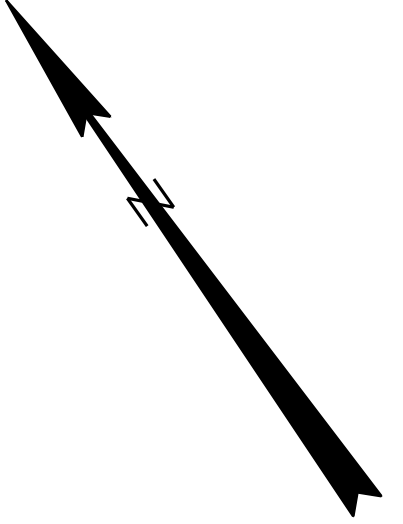
**DRIVE**  
 PI = 81+03.31  
 D = 114°35'29.6"  
 Δ = 86°38'26.2" RT.  
 R = 50.00'  
 L = 75.61'  
 T = 47.15'  
 E = 18.73'

**GEORGE F. BAGLEY**

**HOWARD C. WHELDEN, SR.**

**ARLENE E. IRELAND**

**HERBERT W. LEBRETON, SR.  
 PATRICIA A. LEBRETON**





DATE	BY	DATE	BY
AUG 2012	BT TRAN	JULY 2012	BT TRAN
P.E. NUMBER	SIGNATURE	DATE	BY

