



Paul R. LePage
GOVERNOR

STATE OF MAINE
DEPARTMENT OF TRANSPORTATION
16 STATE HOUSE STATION
AUGUSTA, MAINE 04333-0016

April 23, 2012

Subject: **Sherman, Crystal
& Island Falls**

Federal Project No: IM-1681(920)E

State PIN: 016819.20

Amendment No. 1

David Bernhardt
COMMISSIONER

Dear Sir/Ms:

Make the following change to the Bid Document:

In the Bid Book, "SPECIAL PROVISION, SECTION 105, General Scope of Work, (Environmental Requirements)". In section "II. In-water window applies to the following bodies at the following station #'s:" make the following **CHANGES** in pen and ink;

DELETE the following: **# 8 (Sta. 5202+76), # 9 (Sta. 5365+76) and #10 (Sta. 5636+36)**

ADD new #8 to read as follows' "**4497+50**"

The following questions have been received:

Question: Bid item 205.512 – Is it the State's intent to pay for the 350 widening with this item?

Response: When replacing a twisted guardrail end we will be paying under item 606.754 (EA). When doing a BCT guardrail end conversion where we will only be widening 4' +/- we will be paying under item 205.512 (SY).

Question: Is the intent of the guardrail item 606.24, Guardrail Type 3D, to be extended off 606.1721, Bridge Transitions Type 1?

Response: No, the guardrail replaces the twisted end sections and is 4 runs of 125' each.

Question: There is only 250 LF of guardrail shown on the guardrail schedule but 500 LF for bid item 606.24. Where is the other 250 LF of rail going?

Response: There is 500 feet total at the following locations: 5036+09- 5037+34 (LT), 5037+59 – 5038+34 (RT), 5090+22 – 5191+47 (LT), and 5090+34 – 5091+55 (RT).

Question: Will the Department allow the use of a Milling Machine for the removal of pavement from the bridge decks?



PRINTED ON RECYCLED PAPER

Response: Yes, but proper deck preparation and or any unnecessary damage to the deck is still the responsibility of the contractor as per standard item specifications, etc.

Question: Special Provision 507 (Furnish Aluminum Bridge Rail Components) states that all Type Z rail components shall be of the type and dimensions shown on MaineDOT Standard Details BD 114-77. Where can this standard detail be found?

Response: Please see attached plan sheet.

Question: Is it the intent to have both lanes of traffic open every night, or will the Contractor be allowed to leave lane closures in place overnight?

Response: Overnight lane closures are allowed except for the times mentioned in Special Provision 105 – Limitations of Operations #8, 9, & 10

Consider this change and information prior to submitting your bid on April 25, 2012

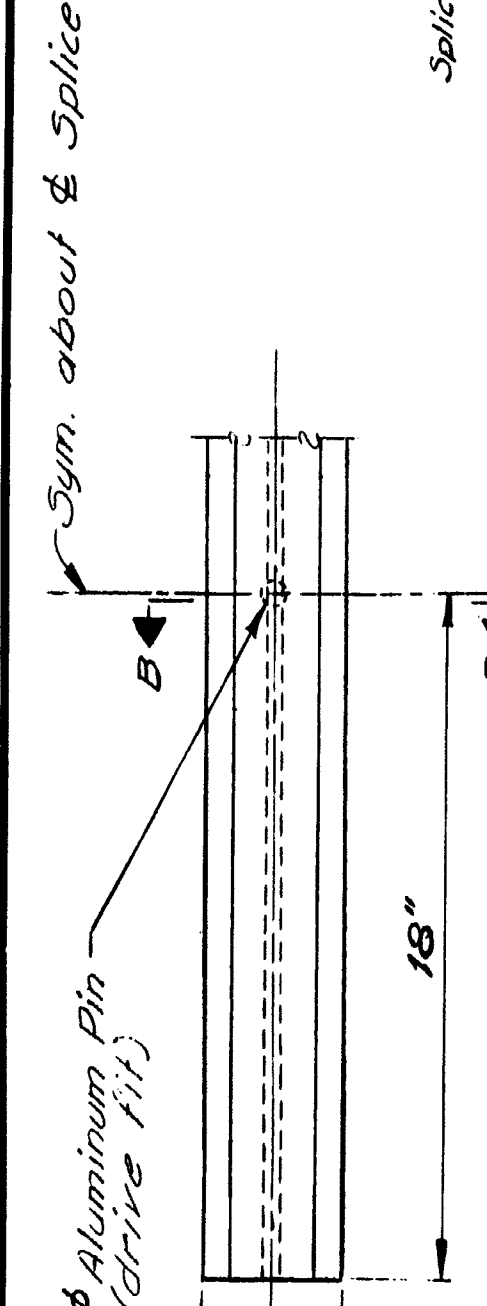
Sincerely,



George M. A. Macdougall P.E.
Contracts & Specifications Engineer

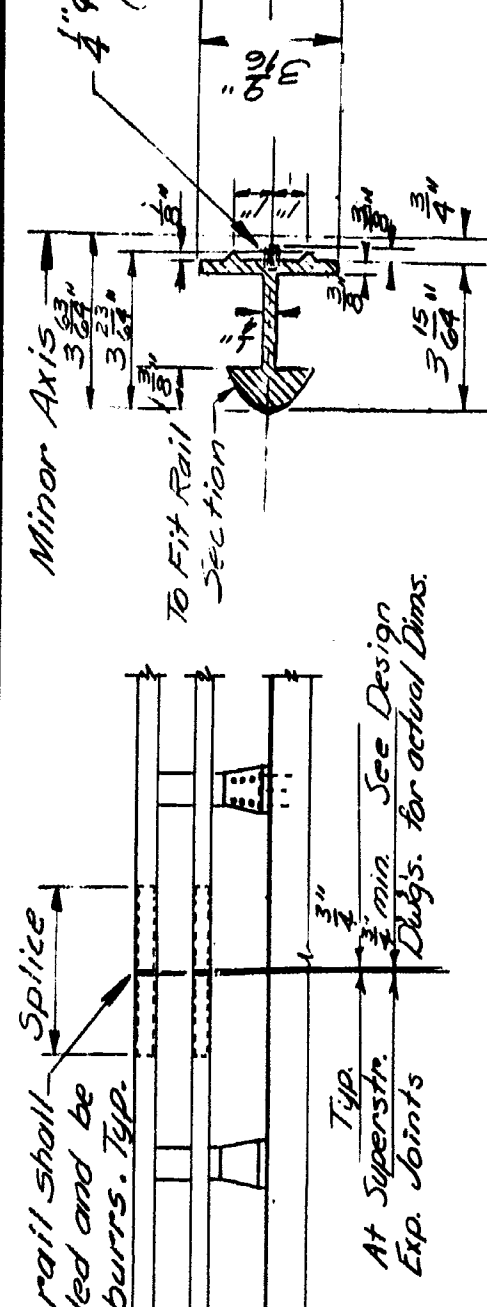
DATE	BY	PROJECT NUMBER	SHEET
1-1-77	KL	1-95-983	46
		1-95-984	51

DESIGN SPECIFICATIONS
 AASHTO Standard Specifications
 for Highway Bridges 1973, and
 Interims 1974, 75, 76, 77



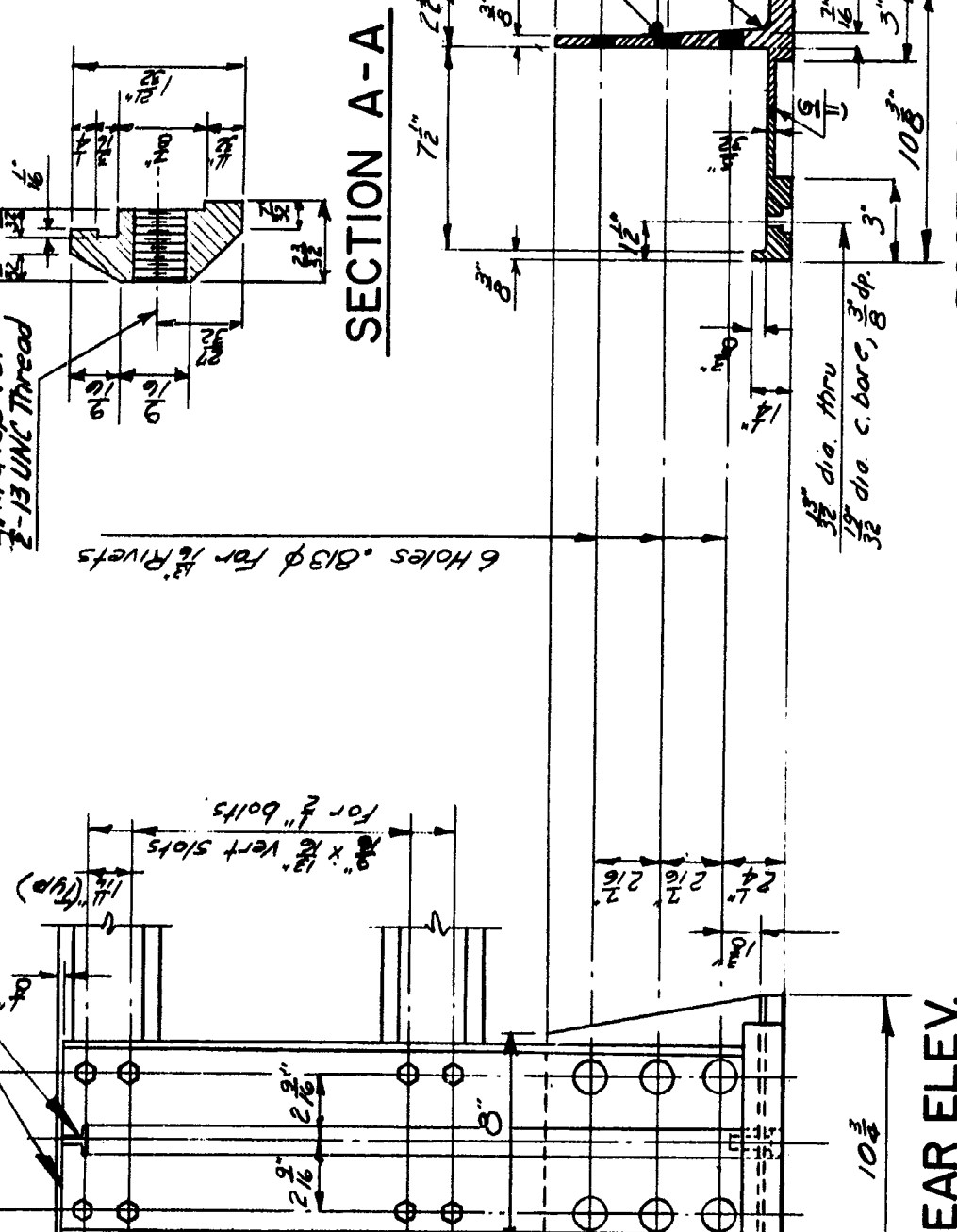
RAILING - ELEVATION

Lengths of rail shall be attached to a minimum of four (4) rail posts wherever possible, and in any case never less than two (2). Rail posts are to be set normal to grade unless otherwise shown on the Bridge Plans.

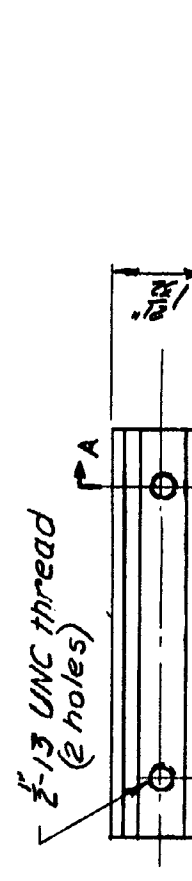


SECTION B-B

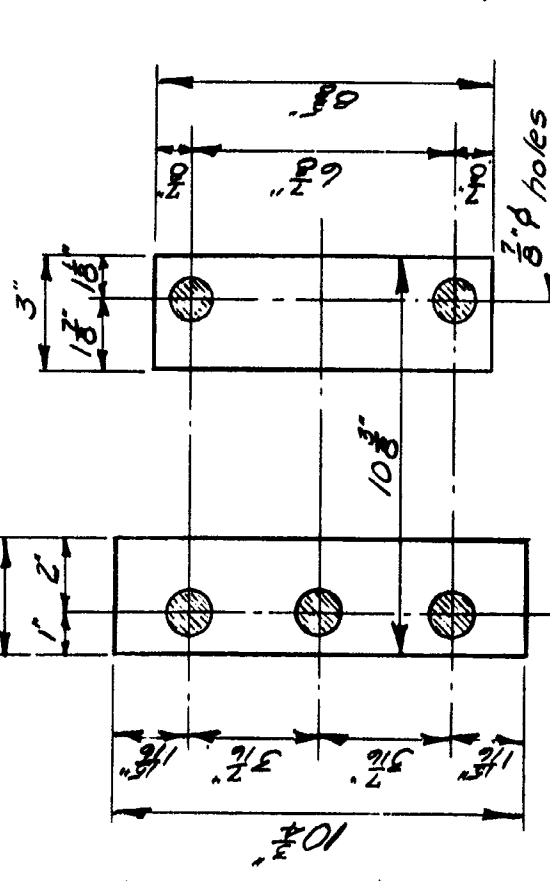
Alternate splice bars may be substituted if approved by the Engineer.



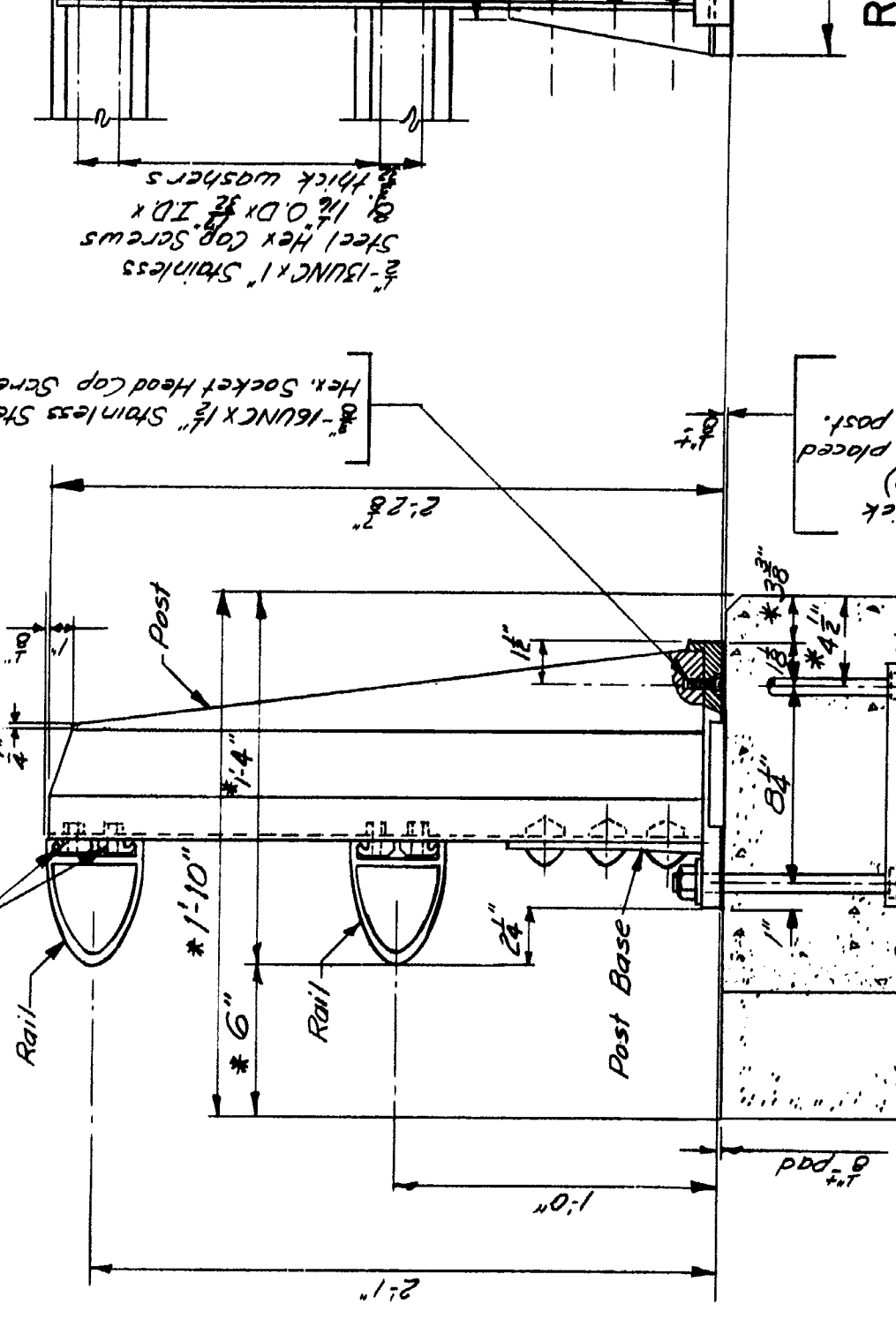
SECTION A-A



CLAMP BAR

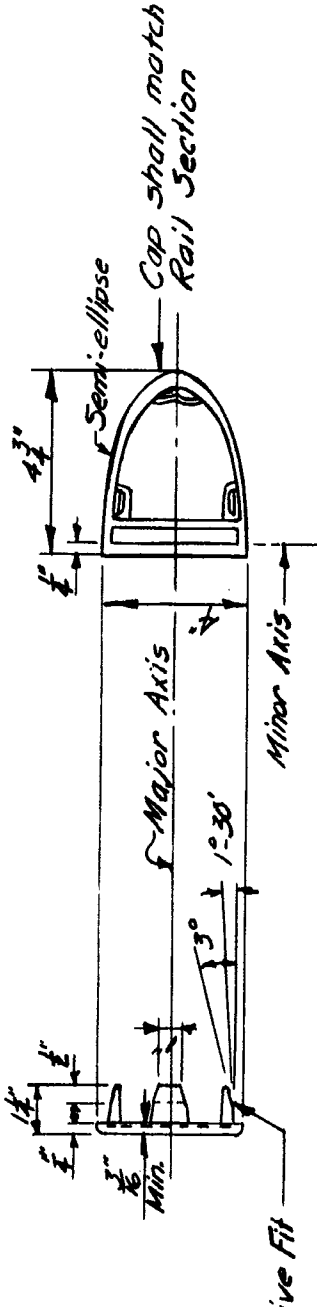


PREFORMED PADS

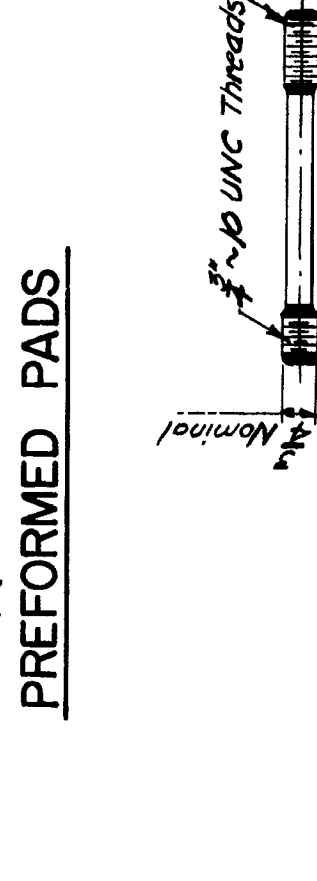


BRIDGE RAILING (Assembly)

* Preferable minimum dimensions. For actual dimensions see Bridge Plan.

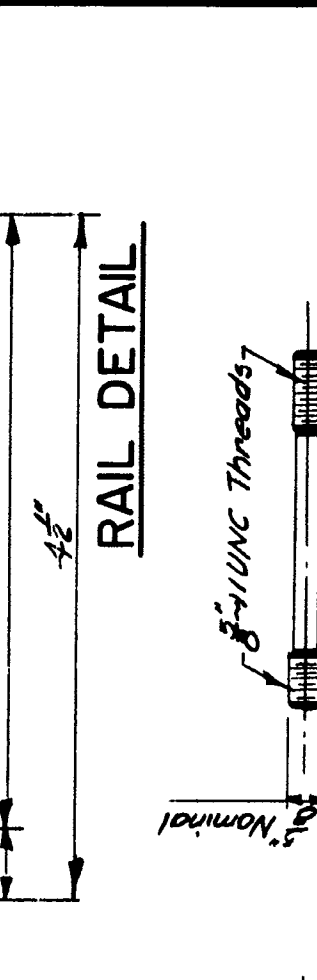


RAIL CAP

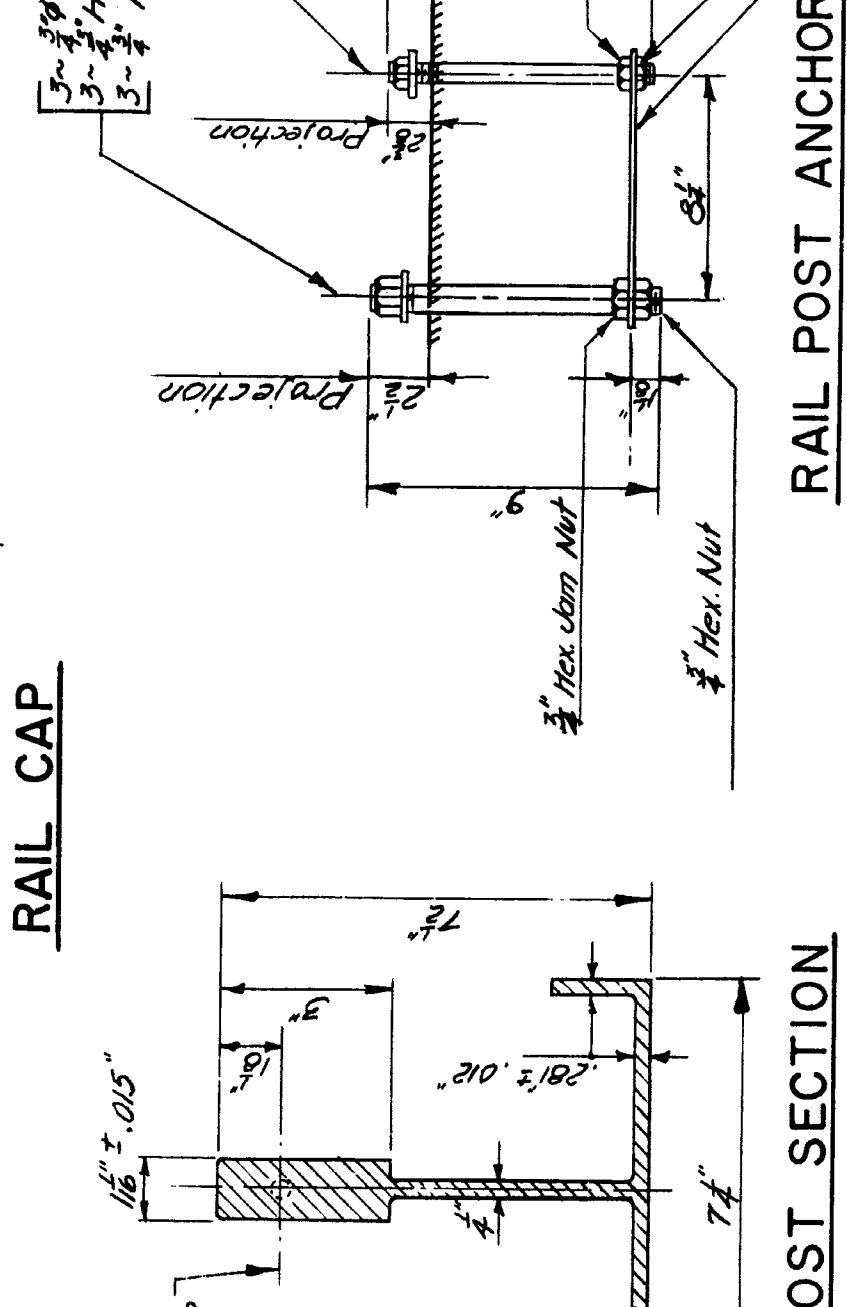


ANCHOR BOLTS

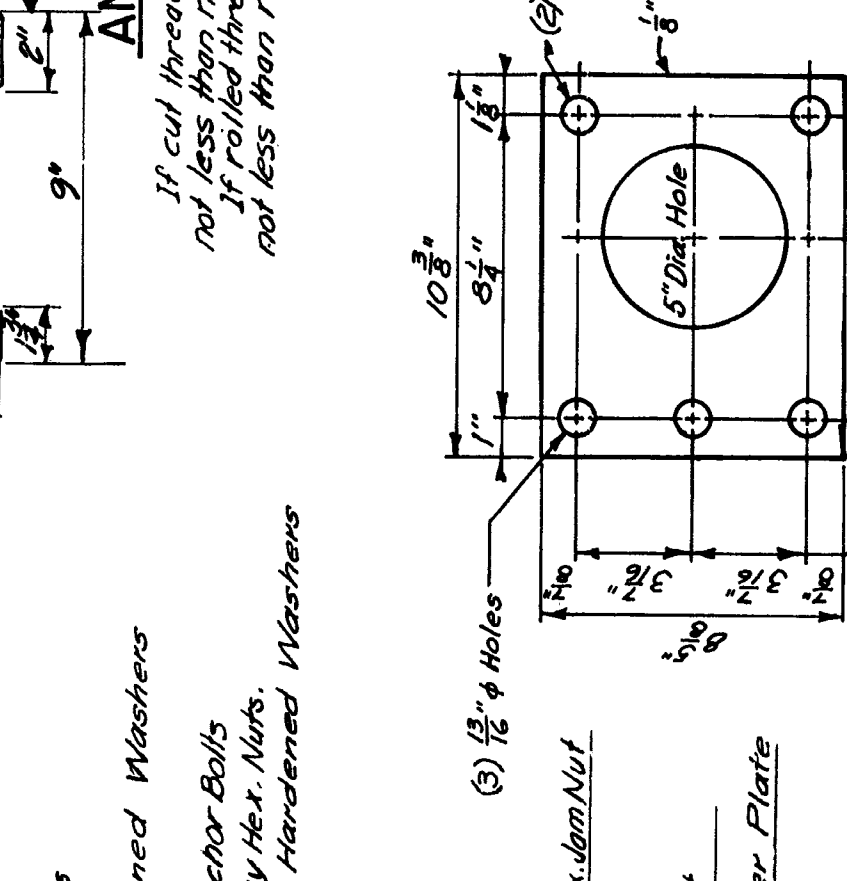
If cut threads are used, body diameter shall be not less than nominal diameter.
 If rolled threads are used, body diameter shall be not less than root diameter of the threads.



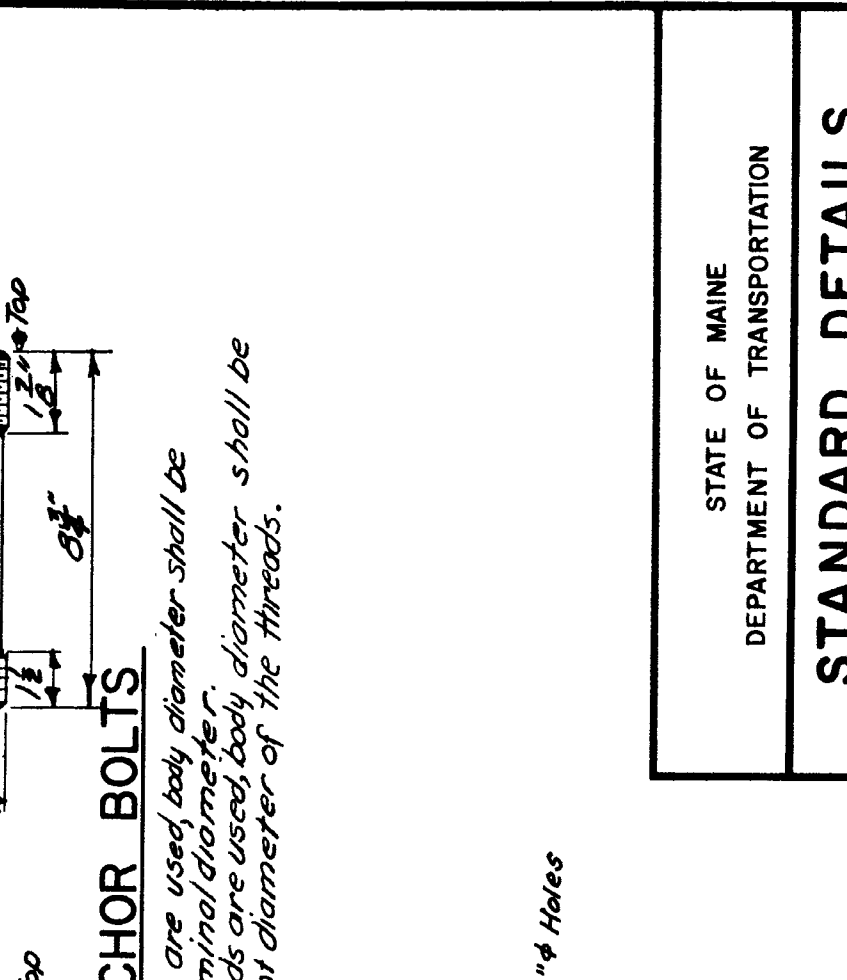
RAIL DETAIL



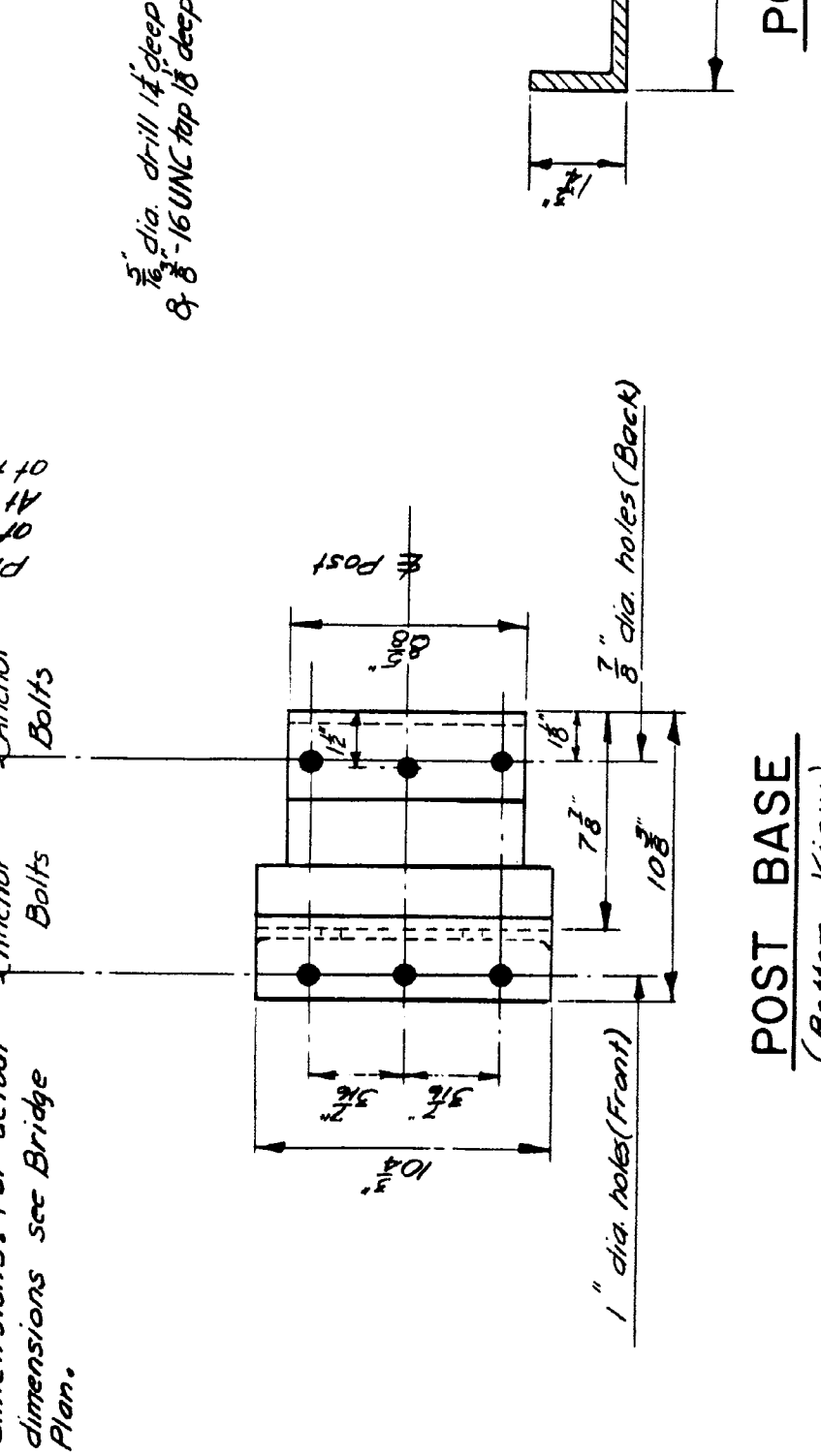
RAIL POST ANCHORAGE (Assembly)



STEEL SPACER PLATE (For Anchorage)



POST SECTION



POST BASE (Bottom View)

STATE OF MAINE
 DEPARTMENT OF TRANSPORTATION
STANDARD DETAILS
 (80 114-77)
ALUMINUM BRIDGE RAILING
 2 - BAR (SEMI-ELLIPSE)
 TYPE "A"

SHEET 46 OF 51 AUGUSTA, MAINE DEC. 1977

166-26

PLANS	DESIGN - DETAILED	KL	1-1-77
CHECKED	KL		
REVISIONS	KL		
FIELD CHANGES	KL		