



Paul R. LePage  
GOVERNOR

STATE OF MAINE  
DEPARTMENT OF TRANSPORTATION  
16 STATE HOUSE STATION  
AUGUSTA, MAINE 04333-0016

May 23, 2011

Subject: **Westbrook**

Federal Project No's: BH-1676(100)X &  
NH-1709(204)E

State PINs: 016761.00 & 017092.04

**Amendment No. 2**

David Bernhardt  
COMMISSIONER

Dear Sir/Ms:

Make the following changes to the Bid Documents:

In the Bid Book (pages 4 thru 10) **REMOVE** the "SCHEDULE OF ITEMS" 7 pages dated 110428 and **REPLACE** with the attached new "SCHEDULE OF ITEMS" 7 pages dated 110523.

In the Plans, Little Bridge over Mill Brook (PIN 016761.00), Sheet Number 2 of 14, ESTIMATED QUANTITIES, **CHANGE** the quantity for Item 635.14 from "1200 SF" to read "**1100 SF**". Make this change in pen and ink.

In the Plans, Little Bridge over Mill Brook (PIN 016761.00), **REMOVE** Sheet Number 12 of 14 and **REPLACE** with the attached new Sheet Number 12 of 14.

The following questions have been received:

**Question:** Would an option to use multiple boxes versus the large box on Little Bridge be considered by the Department?

**Response:** Please bid the project as per plans and specifications. The Standard Specifications allow for value engineering after award. At this time, the Department makes no determination on the merits of this value engineering concept.

**Question:** The bottom of the wingwalls are six (6') feet below the invert of the box at Little Bridge. With this in mind shouldn't the toe wall on the box be deeper?

**Response:** The Wingwall elevations have all been raised and the Precast Concrete Toe Walls have new dimensions. Please see the changes to Sheet 12, Box Culvert & Winwall Details. Detail 1 also shows a dimension clarification to the Precast Concrete Headwall. The quantity for item 635.14 Prefabricated Concrete Modular Gravity Wall has been changed in the new Schedule of Items.

**Question:** Are 2 type A office trailers necessary?

**Response:** Only one office trailer is needed. Please see the new Schedule of Items.



PRINTED ON RECYCLED PAPER

**Question:** Regarding the box culvert for the Little Bridge over Mill Brook, would a two piece design be acceptable? For instance a top slab with integral legs set on a base slab with integral stem walls.

**Response:** Yes, the box culvert for Little Bridge can be constructed in multiple pieces.

Consider this change and information prior to submitting your bid on May 25, 2011.

Sincerely,

A handwritten signature in black ink, appearing to read "Scott Bickford" followed by a stylized flourish that includes the letters "TOR".

Scott Bickford  
Contracts & Specifications Engineer

SCHEDULE OF ITEMS

REVISED:

CONTRACT ID: 016761.00

PROJECT(S): BH-1676(100)X

NH-1709(204)E

CONTRACTOR : \_\_\_\_\_

LINE NO	ITEM DESCRIPTION	APPROX. QUANTITY AND UNITS	UNIT PRICE		BID AMOUNT	
			DOLLARS	CTS	DOLLARS	CTS
SECTION 0001 PROJECT ITEMS						
0010	202.19 REMOVING EXISTING BRIDGE	LUMP	LUMP			
0020	203.20 COMMON EXCAVATION	3750.000 CY				
0030	203.2318 DISPOSAL OF SPECIAL WASTE	81.000 T				
0040	203.24 COMMON BORROW	810.000 CY				
0050	203.25 GRANULAR BORROW	3220.000 CY				
0060	203.33 SPECIAL FILL	230.000 CY				
0070	206.061 STRUCTURAL EARTH EXCAVATION - DRAINAGE AND MINOR STRUCTURES, BELOW GRADE	10.000 CY				
0080	206.082 STRUCTURAL EARTH EXCAVATION - MAJOR STRUCTURES	2650.000 CY				
0090	304.10 AGGREGATE SUBBASE COURSE - GRAVEL	3950.000 CY				

SCHEDULE OF ITEMS

REVISED:

CONTRACT ID: 016761.00

PROJECT(S): BH-1676(100)X

NH-1709(204)E

CONTRACTOR : \_\_\_\_\_

LINE NO	ITEM DESCRIPTION	APPROX. QUANTITY AND UNITS	UNIT PRICE		BID AMOUNT	
			DOLLARS	CTS	DOLLARS	CTS
0100	403.207 HOT MIX ASPHALT 19.0 MM HMA	290.000 T				
0110	403.208 HOT MIX ASPHALT 12.5 MM HMA SURFACE	620.000 T				
0120	403.213 HOT MIX ASPHALT 12.5 MM BASE	620.000 T				
0130	409.15 BITUMINOUS TACK COAT - APPLIED	186.000 G				
0140	508.13 MEMBRANE WATERPROOFING	LUMP	LUMP			
0150	511.07 COFFERDAM: DOWNSTREAM	LUMP	LUMP			
0160	511.07 COFFERDAM: UPSTREAM	LUMP	LUMP			
0170	526.301 TEMPORARY CONCRETE BARRIER TYPE I	LUMP	LUMP			
0180	527.34 WORK ZONE CRASH CUSHIONS	4.000 UN				
0190	534.71 PRECAST CONCRETE BOX CULVERT	LUMP	LUMP			
0200	603.199 24 INCH CULVERT PIPE OPTION III	96.000 LF				

SCHEDULE OF ITEMS

REVISED:

CONTRACT ID: 016761.00

PROJECT(S): BH-1676(100)X

NH-1709(204)E

CONTRACTOR : \_\_\_\_\_

LINE NO	ITEM DESCRIPTION	APPROX. QUANTITY AND UNITS	UNIT PRICE		BID AMOUNT	
			DOLLARS	CTS	DOLLARS	CTS
0210	606.23 GUARDRAIL TYPE 3C - SINGLE RAIL	1293.000 LF				
0220	606.231 GUARDRAIL TYPE 3C - 15 FOOT RADIUS AND LESS	50.000 LF				
0230	606.265 TERMINAL END - SINGLE RAIL - GALVANIZED STEEL	1.000 EA				
0240	606.353 REFLECTORIZED FLEXIBLE GUARDRAIL MARKER	12.000 EA				
0250	606.79 GUARDRAIL 350 FLARED TERMINAL	4.000 EA				
0260	609.31 CURB TYPE 3	483.000 LF				
0270	610.08 PLAIN RIPRAP	820.000 CY				
0280	610.16 HEAVY RIPRAP	1400.000 CY				
0290	610.18 STONE DITCH PROTECTION	200.000 CY				
0300	613.319 EROSION CONTROL BLANKET	240.000 SY				
0310	615.07 LOAM	167.000 CY				

SCHEDULE OF ITEMS

REVISED:

CONTRACT ID: 016761.00

PROJECT(S): BH-1676(100)X

NH-1709(204)E

CONTRACTOR : \_\_\_\_\_

LINE NO	ITEM DESCRIPTION	APPROX. QUANTITY AND UNITS	UNIT PRICE		BID AMOUNT	
			DOLLARS	CTS	DOLLARS	CTS
0320	618.1301 SEEDING METHOD NUMBER 1 - PLAN QUANTITY	1.000 UN				
0330	618.1401 SEEDING METHOD NUMBER 2 - PLAN QUANTITY	26.000 UN				
0340	619.1201 MULCH - PLAN QUANTITY	27.000 UN				
0350	619.1401 EROSION CONTROL MIX	324.000 CY				
0360	620.58 EROSION CONTROL GEOTEXTILE	2750.000 SY				
0370	627.18 12 " SOLID WHITE PAVEMENT MARKING	82.000 LF				
0380	627.733 4" WHITE OR YELLOW PAINTED PAVEMENT MARKING LINE	5308.000 LF				
0390	627.75 WHITE OR YELLOW PAVEMENT & CURB MARKING	340.000 SF				
0400	627.76 TEMPORARY PAVEMENT MARKING LINE, WHITE OR YELLOW	LUMP	LUMP			
0410	627.77 REMOVING PAVEMENT MARKINGS	340.000 SF				
0420	629.05 HAND LABOR, STRAIGHT TIME	80.000 HR				

SCHEDULE OF ITEMS

REVISED:

CONTRACT ID: 016761.00

PROJECT(S): BH-1676(100)X

NH-1709(204)E

CONTRACTOR : \_\_\_\_\_

LINE NO	ITEM DESCRIPTION	APPROX. QUANTITY AND UNITS	UNIT PRICE		BID AMOUNT	
			DOLLARS	CTS	DOLLARS	CTS
0430	631.12 ALL PURPOSE EXCAVATOR (INCLUDING OPERATOR)	40.000 HR				
0440	631.14 GRADER (INCLUDING OPERATOR)	40.000 HR				
0450	631.15 ROLLER, EARTH AND BASE COURSE (INCLUDING OPERATOR )	40.000 HR				
0460	631.172 TRUCK - LARGE (INCLUDING OPERATOR)	40.000 HR				
0470	635.14 PREFABRICATED CONCRETE MODULAR GRAVITY WALL	1100.000 SF				
0480	639.18 FIELD OFFICE TYPE A	1.000 EA				
0490	643.71 TRAFFIC SIGNAL MODIFICATION	LUMP	LUMP			
0500	643.86 TRAFFIC SIGNAL LOOP DETECTORS	1.000 EA				
0510	645.292 REGULATORY, WARNING, CONFIRMATION AND ROUTE MARKER ASSEMBLY SIGNS TYPE II	10.000 SF				
0520	652.31 TYPE I BARRICADE	35.000 EA				

SCHEDULE OF ITEMS

REVISED:

CONTRACT ID: 016761.00

PROJECT(S): BH-1676(100)X

NH-1709(204)E

CONTRACTOR : \_\_\_\_\_

LINE NO	ITEM DESCRIPTION	APPROX. QUANTITY AND UNITS	UNIT PRICE		BID AMOUNT	
			DOLLARS	CTS	DOLLARS	CTS
0530	652.312 TYPE III BARRICADE	35.000 EA				
0540	652.33 DRUM	90.000 EA				
0550	652.34 CONE	140.000 EA				
0560	652.35 CONSTRUCTION SIGNS	516.000 SF				
0570	652.361 MAINTENANCE OF TRAFFIC CONTROL DEVICES	LUMP	LUMP			
0580	652.38 FLAGGER	430.000 HR				
0590	652.41 PORTABLE CHANGEABLE MESSAGE SIGN	2.000 EA				
0600	656.75 TEMPORARY SOIL EROSION AND WATER POLLUTION CONTROL	LUMP	LUMP			
0610	659.10 MOBILIZATION	LUMP	LUMP			
0620	822.352 10 INCH CLASS 52 DUCTILE IRON PIPE	LUMP	LUMP			
0630	823.32 10 INCH GATE VALVE INSERTION	1.000 EA				

SCHEDULE OF ITEMS

REVISED:

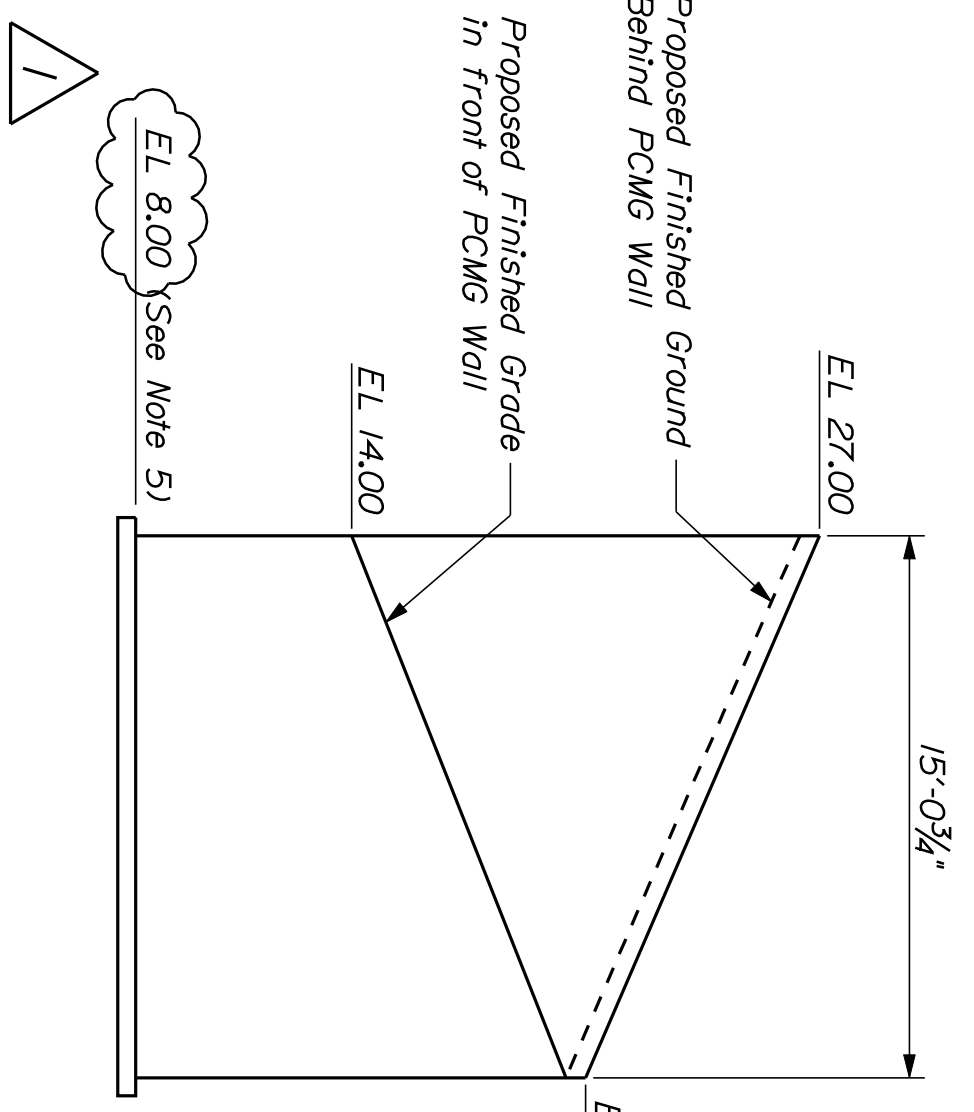
CONTRACT ID: 016761.00

PROJECT(S): BH-1676(100)X

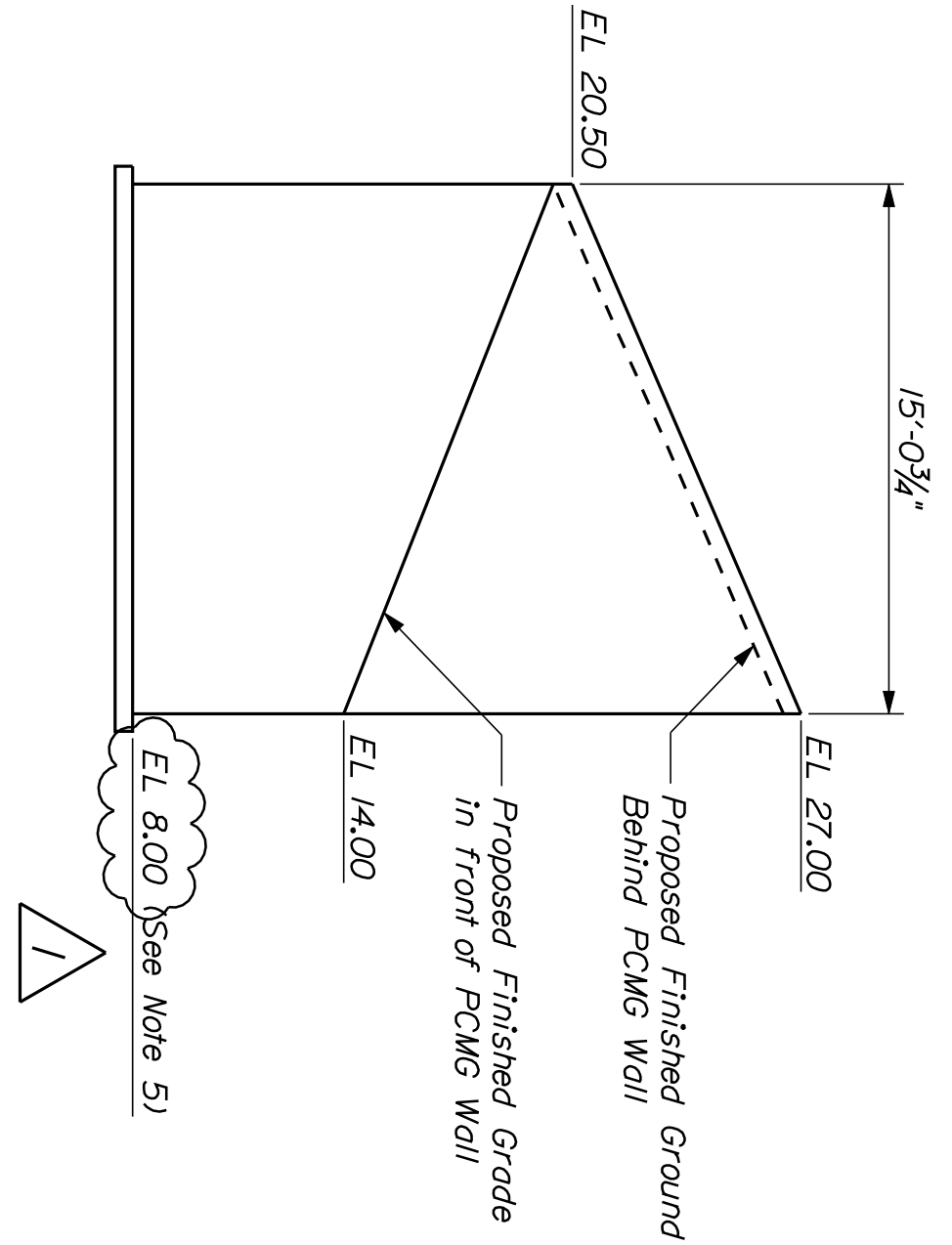
NH-1709(204)E

CONTRACTOR : \_\_\_\_\_

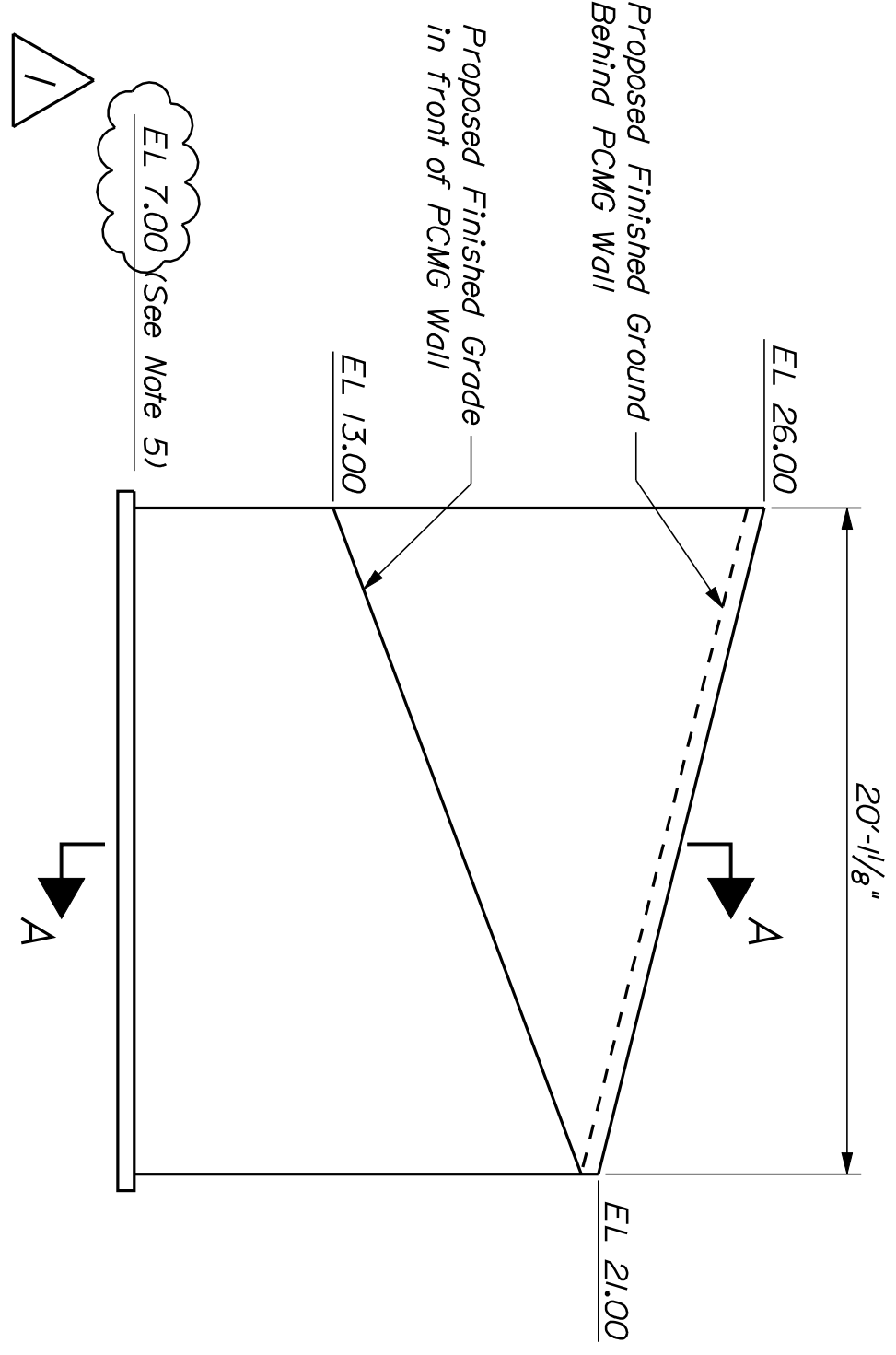
LINE NO	ITEM DESCRIPTION	APPROX. QUANTITY AND UNITS	UNIT PRICE		BID AMOUNT	
			DOLLARS	CTS	DOLLARS	CTS
0640	823.333 VALVE BOX, ADJUST TO GRADE	4.000 EA				
0650	824.305 FIRE HYDRANT SERVICE, ADJUST TO GRADE	LUMP	LUMP			
	SECTION 0001 TOTAL					
	TOTAL BID					



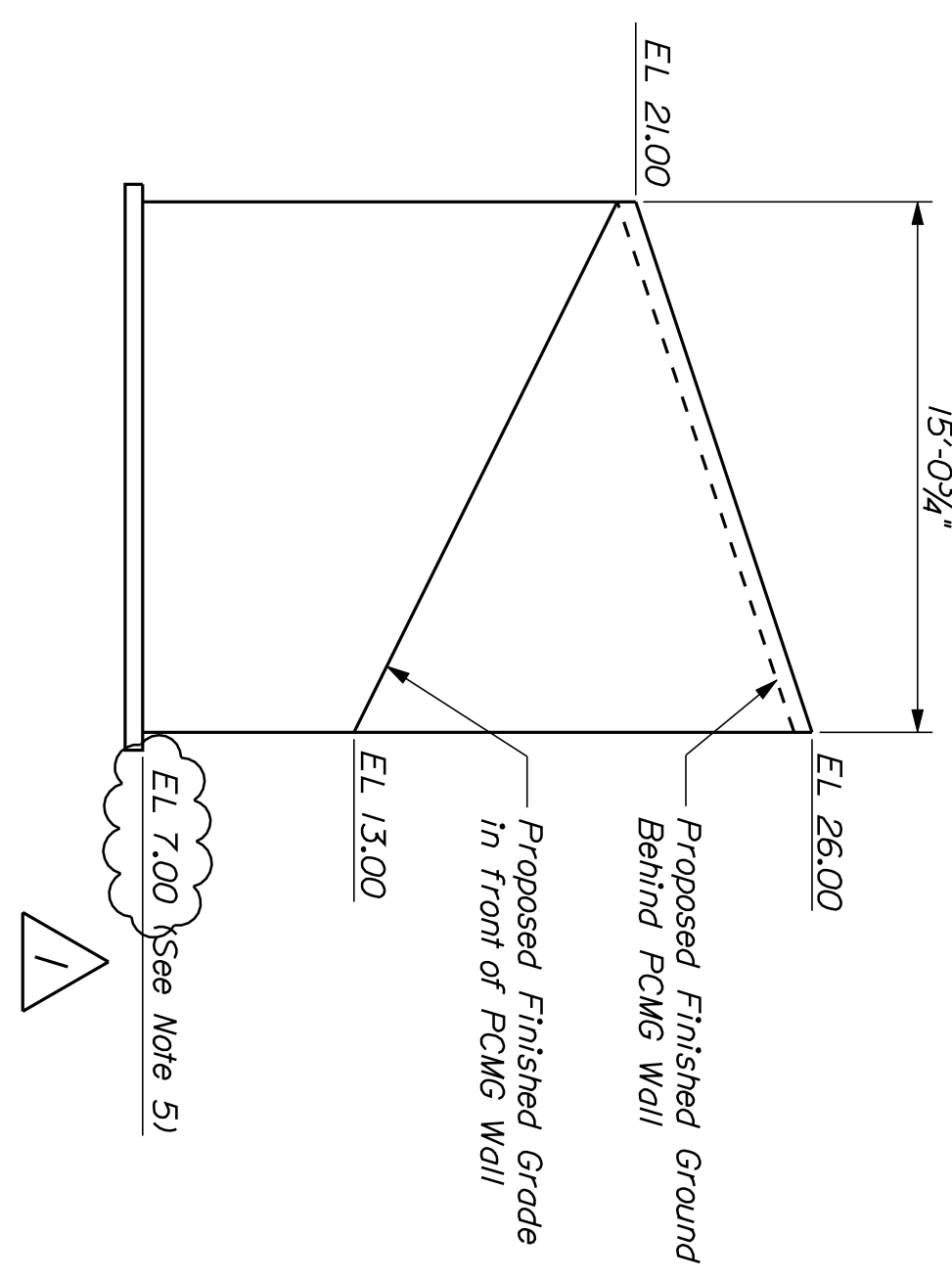
WINGWALL #1 ELEVATION



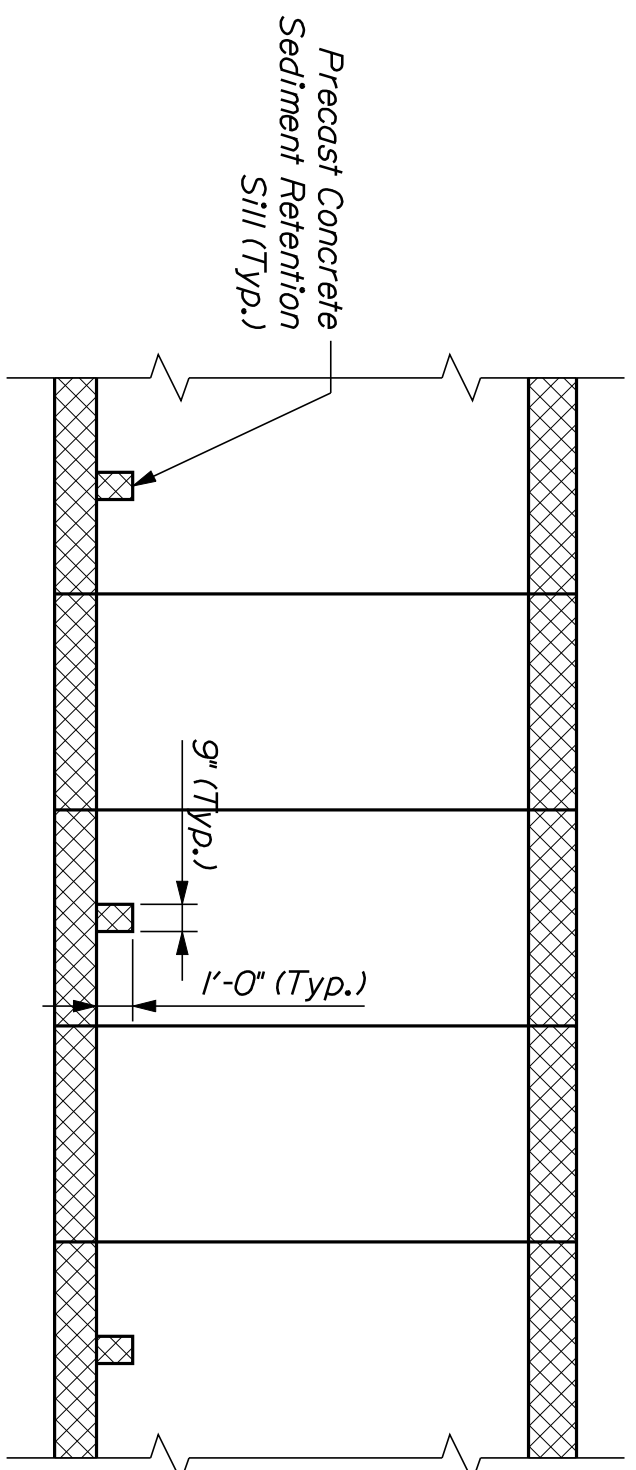
WINGWALL #2 ELEVATION



WINGWALL #3 ELEVATION

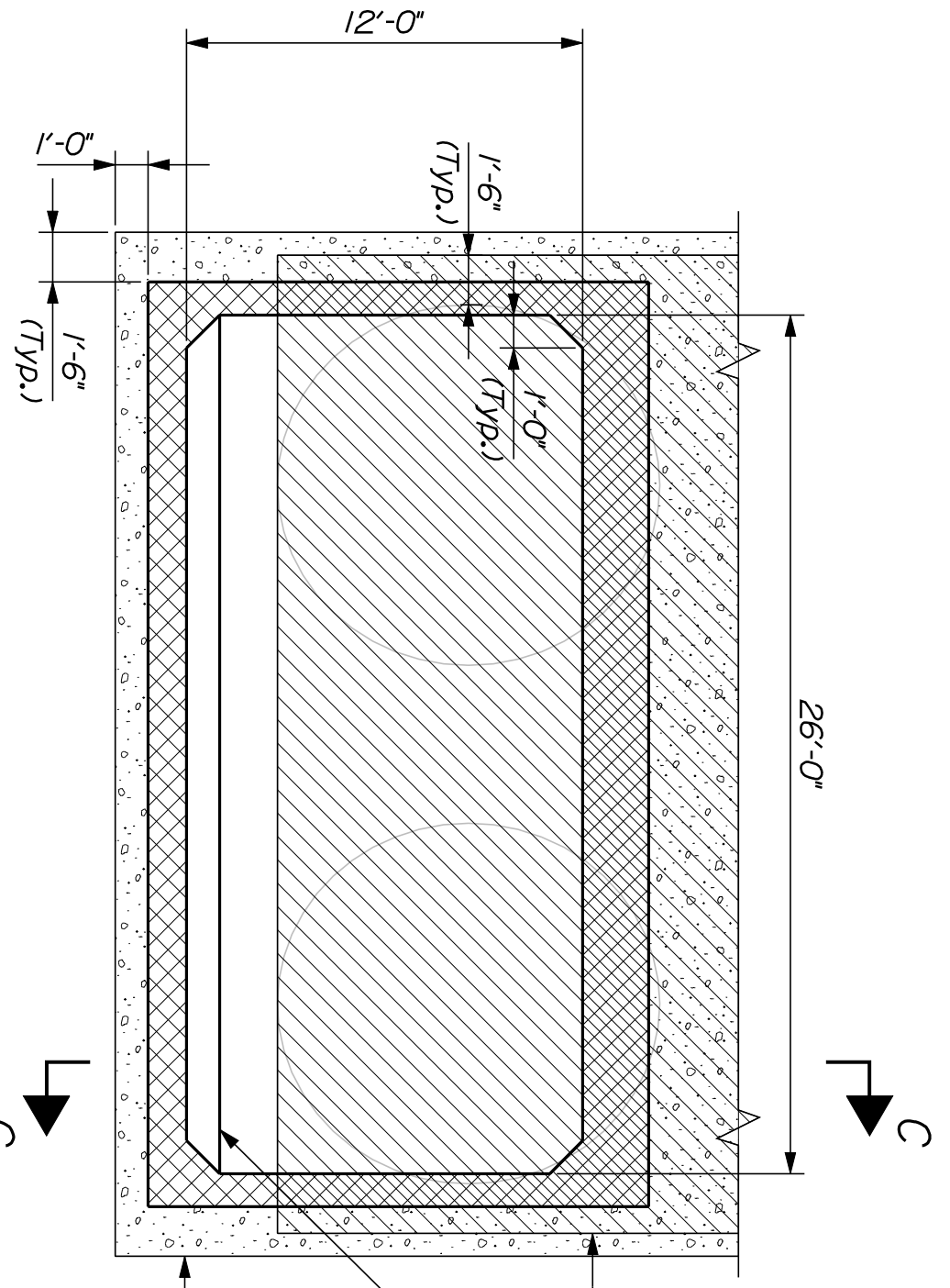


WINGWALL #4 ELEVATION



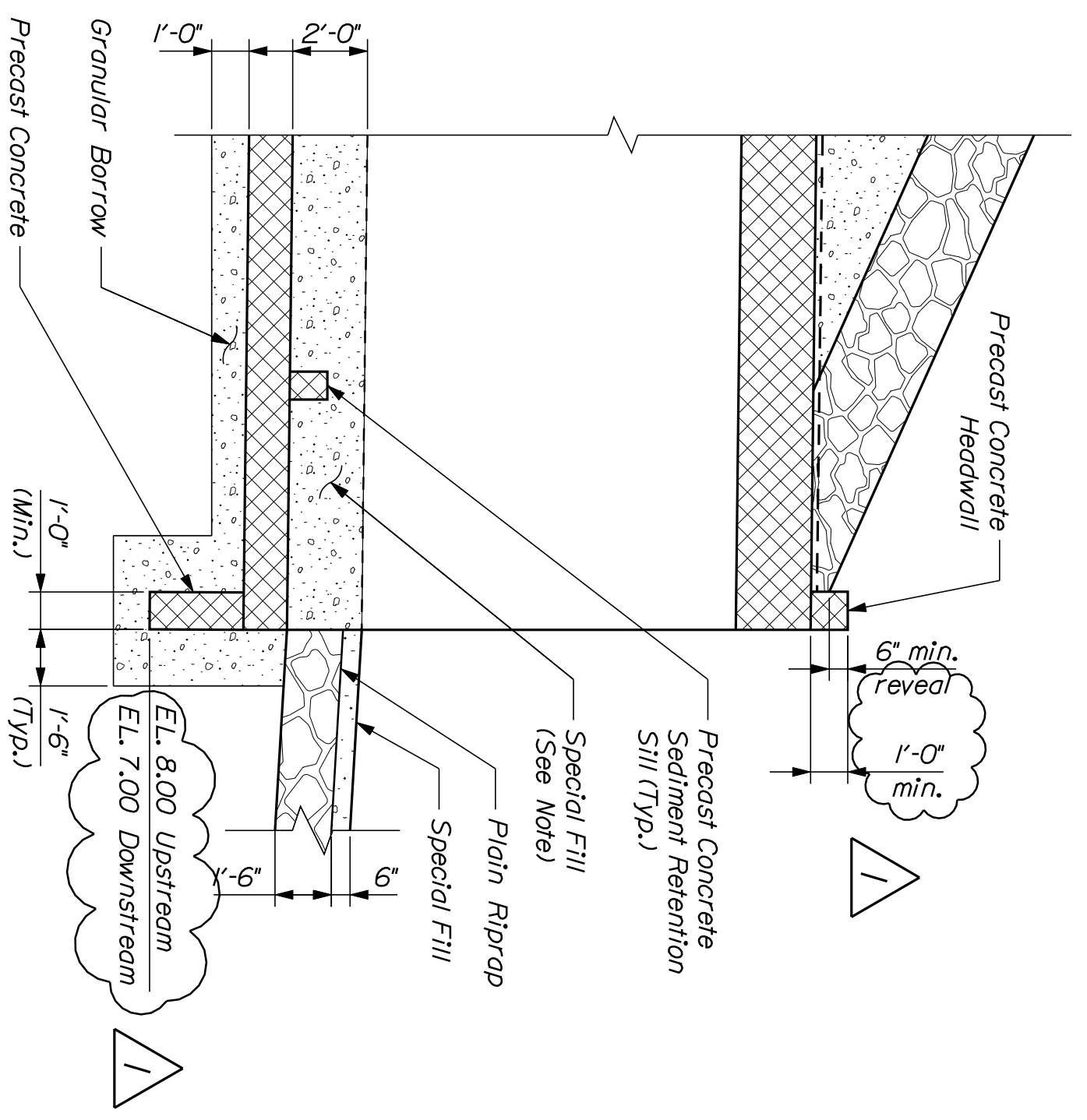
SECTION C-C

Notes:  
 1. Sediment Retention Stills shall be spaced at a maximum of 12 feet.  
 2. Payment for Toe Walls, Headwalls, and Sediment Retention Stills shall be incidental to Item 534.71, Precast Concrete Box Culvert.



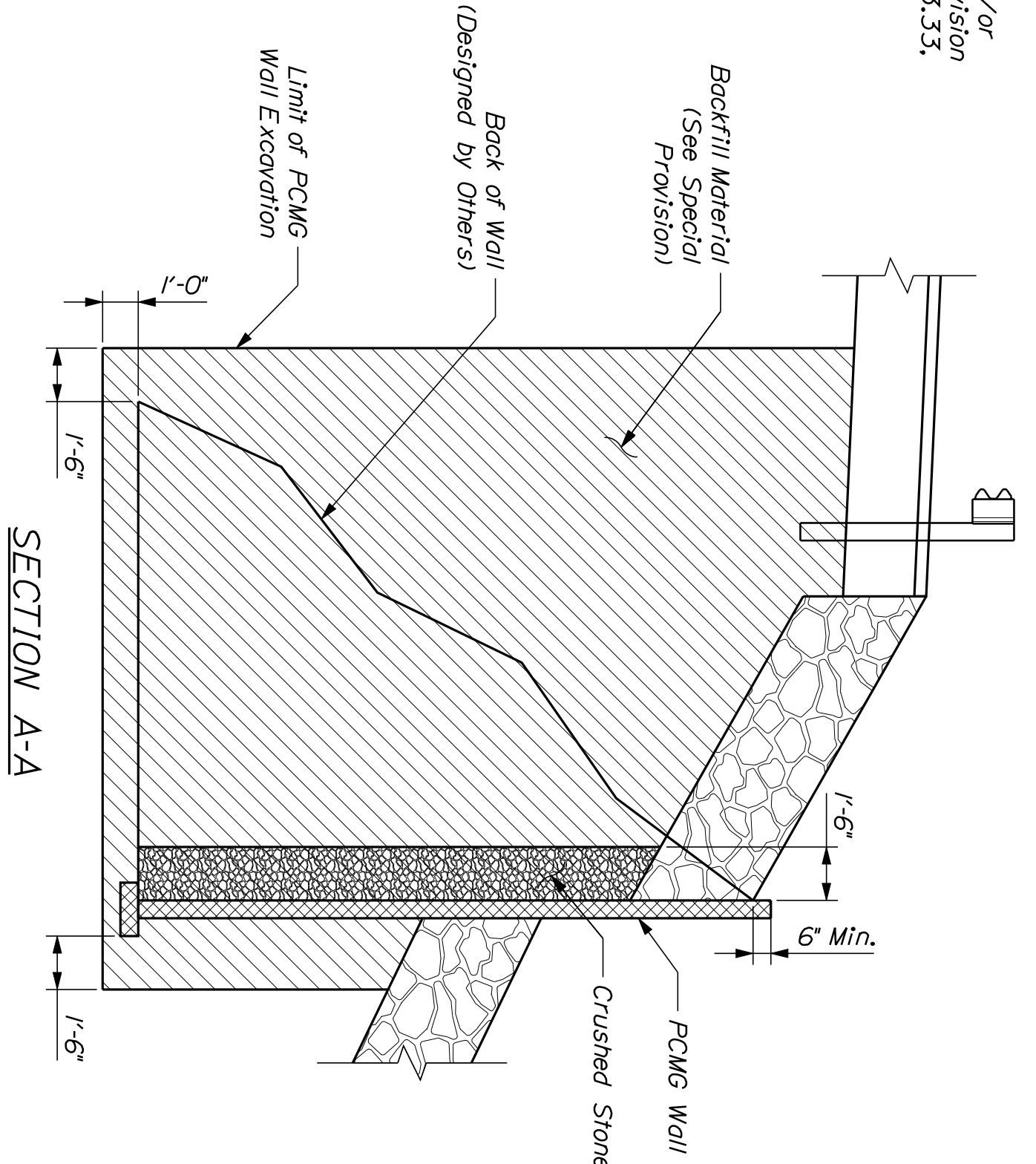
SECTION B-B

Limits of Removal of Existing Bridge  
 Precast Concrete Sediment Retention Still  
 Limits of Structural Earth Excavation and Granular Borrow



DETAIL 1

Note:  
 Box Culvert shall be filled with Excavated Dredge and/or Granular Underwater Borrow according to Special Provision 203, Special Fill. Payment shall correspond to Item 203.33, Special Fill.



SECTION A-A

Backfill Material (See Special Provision)  
 Back of Wall (Designed by Others)  
 Limit of PCMG Wall Excavation  
 PCMG Wall  
 Crushed Stone  
 6\"/>

PREFABRICATED CONCRETE MODULAR GRAVITY WALL NOTES

- The Contractor shall provide a Prefabricated Concrete Modular Gravity (PCMG) Wall in accordance with Special Provision Section 635. The PCMG Wall shall be designed and stamped by a Registered Professional Engineer and the design shall be submitted to the Resident for review. Plan details are shown for estimating purposes only.
- The precast units shall be one of the following, or equal:  
 \*T-Wall as manufactured by a licensed manufacturer of Neel Company  
 \*DoubleWall as manufactured by a licensed manufacturer of DoubleWall Corp., Plainville, Connecticut.
- For the strength limit state, the factored bearing pressure for PCMG Walls shall not exceed the factored bearing resistance of 3 ksf for wall system bases less than 10 feet wide and 4 ksf for bases 12 to 15 feet wide. The factored bearing pressure for the service limit state shall not exceed the factored bearing resistance of 3 ksf.
- Cofferdams for the PCMG Wall installation will be included with Poy Item No. 511.07, Cofferdam.
- Elevation at bottom of PCMG Wall may be lowered for constructability at no additional cost to the Department.

STATE OF MAINE  
 DEPARTMENT OF TRANSPORTATION  
**BH-1676(100)X**  
 PIN 16761.00  
 BRIDGE NO. 3987

PROJ. MANAGER	N. Benoit	BY		DATE	
DESIGN-DETAILED	K. Constanzer	K. Constanzer		11/28/11	SIGNATURE
CHECKED-REVIEWED	C. Weaver	M. Steele			P.E. NUMBER
DESIGN2-DETAILED2					DATE
DESIGN3-DETAILED3					
REVISIONS 1	REVISED FROST REQ'S			5/20/11	
REVISIONS 2					
REVISIONS 3					
REVISIONS 4					
FIELD CHANGES					

LITTLE BRIDGE  
 MILL BROOK  
 WESTBROOK CUMBERLAND COUNTY  
**BOX CULVERT & WINGWALL DETAILS**

**KLEINFELDER S E A**  
 Right-Track Right-Solutions  
 S E A CONSULTANTS INC.

SHEET NUMBER  
**12**  
 OF 14